

TRACT 37404 - Portion of Blocks 2, and 3, East Cameron Area, Revised, Cameron Parish, Louisiana

The beds and bottoms of all water bodies belonging to the State of Louisiana located in Blocks 2, and 3, East Cameron Area, Revised, together with any present lands formed by accretion to the shoreline or islands formed therein, located in Cameron Parish, Louisiana, owned by and not presently under mineral lease as of June 8, 2005, from the State of Louisiana, the geographical area of which is more fully described as follows: Beginning at the Northeast corner of State Lease No. 18121, said corner also being a point on the North line of Block 2, East Cameron Area, Revised, having Coordinates of X = 1,471,741.95 and Y = 374,758.05; thence East 8,258.05 feet along the North line of said Block 2 to its Northeast corner, said corner also being the most Westerly Northwest corner of Block 3, East Cameron Area, Revised, having Coordinates of X = 1,480,000.00 and Y = 374,758.05; thence East 1,200.00 feet along the North line of Block 3 to a point having Coordinates of X = 1,481,200.00 and Y = 374,758.05; thence South 11,534.40 feet to a point on the Three Mile Decree derived from the June 16, 1975 United States vs. Louisiana No. 9 Original, having Coordinates of X = 1,481,200.00 and Y = 363,223.65; thence along said Three Mile Decree the following courses: Northwesterly on a straight line to a point having Coordinates of X = 1,472,522 and Y = 367,321; and Northwesterly on a straight line to the most Southerly Southeast corner of State Lease No. 16475 having Coordinates of X = 1,466,313.77 and Y = 369,735.05; thence North 43 degrees 52 minutes 01 seconds East 1,579.01 feet along the Southeastern boundary of said State Lease No. 16475 to the Southwest corner of said State Lease No. 18121 having Coordinates of X = 1,467,408.01 and Y = 370,873.44; thence East 4,333.94 feet along the South line of said State Lease No. 18121 to its Southeast corner having Coordinates of X = 1,471,741.95 and Y = 370,873.44; thence North 3,884.61 feet along the East line of said State Lease No. 18121 to the point of beginning, containing **2,279.28 acres, LESS AND EXCEPT** that portion thereof, if any, lying seaward of the line three nautical miles from the coast line of Louisiana, as said three mile line has been decreed by the Supreme Court of the United States, as determined by a Special Master appointed therein, in litigation styled **United States v. State of Louisiana et al No. 9 Original**, in 1975, all as more particularly outlined on a plat in the Office of Mineral Resources, Department of Natural Resources. All bearings, distances and coordinates are based on the Louisiana Coordinate System of 1927, (South Zone).

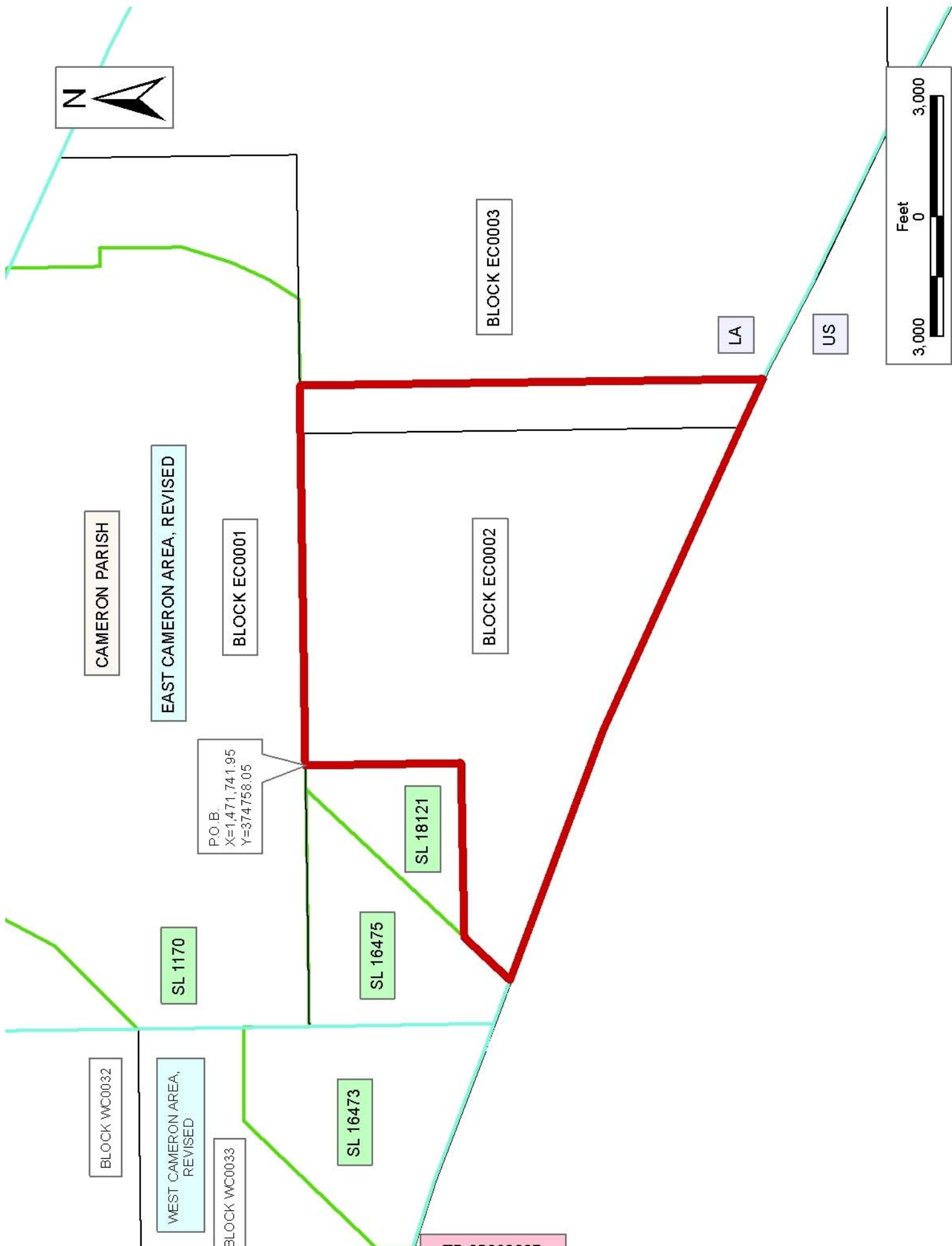
NOTE: The above description of the Tract nominated for lease has been provided and corrected, where required, exclusively by the nomination party. Any mineral lease selected from this Tract and awarded by the Louisiana State Mineral Board shall be without warranty of any kind, either express, implied, or statutory, including, but not limited to, the implied warranties of merchantability and fitness for a particular purpose. Should the mineral lease awarded by the Louisiana State Mineral Board be subsequently modified, cancelled or abrogated due to the existence of conflicting leases, operating agreements, private claims or

other future obligations or conditions which may affect all or any portion of the leased Tract, it shall not relieve the Lessee of the obligation to pay any bonus due thereon to the Louisiana State Mineral Board, nor shall the Louisiana State Mineral Board be obligated to refund any consideration paid by the Lessor prior to such modification, cancellation, or abrogation, including, but not limited to, bonuses, rentals and royalties.

NOTE: The State of Louisiana does hereby reserve, and this lease shall be subject to, the imprescriptible right of surface use in the nature of a servitude in favor of the Department of Natural Resources, including its Offices and Commissions, for the sole purpose of implementing, constructing, servicing and maintaining approved coastal zone management and/or restoration projects. Utilization of any and all rights derived under this lease by the mineral lessee, its agents, successors or assigns, shall not interfere with nor hinder the reasonable surface use by the Department of Natural Resources, its Offices or Commissions, as herein above reserved.

Applicant: Juanita C. Chatelain

Bidder	Cash Payment	Price/Acre	Rental	Oil	Gas	Other



TRACT 37405 - Portion of Blocks 4, and 9, East Cameron Area, Revised, Cameron Parish, Louisiana

The beds and bottoms of all water bodies belonging to the State of Louisiana located in Blocks 4, and 9, East Cameron Area, Revised, together with any present lands formed by accretion to the shoreline or islands formed therein, located in Cameron Parish, Louisiana, owned by and not presently under mineral lease as of June 8, 2005, from the State of Louisiana, the geographical area of which is more fully described as follows: Beginning at a point on the North line of Block 4, East Cameron Area, Revised, said point also being on the Coastline as per the Supreme Court Decree dated June 16, 1975, having Coordinates of X = 1,501,800.00 and Y = 372,990.19; thence along said Coastline the following courses: Southeasterly on a straight line to a point having Coordinates of X = 1,502,470 and Y = 372,625; and Southeasterly on a straight line to the Northeast corner of said Block 4, having Coordinates of X = 1,509,516.10 and Y = 368,912.93; thence South 8,912.93 feet along the Block 4 to its Southeast corner, said corner also being the Northeast corner of Block 9, having Coordinates of X = 1,509,516.10 and Y = 360,000.00; thence South 7,314.27 feet along the East line of said Block 9 to a point having Coordinates of X = 1,509,516.10 and Y = 352,685.73; thence West 3,195.10 feet to a point on the East line of State Lease No. 17434 having Coordinates of X = 1,506,321.00 and Y = 352,685.73; thence along the boundary of said State Lease No. 17434 the following courses: North 4,827.27 feet to its Northeast corner having Coordinates of X = 1,506,321.00 and Y = 357,513.00; and North 59 degrees 25 minutes 20 seconds West 4,888.85 feet along the Northern boundary of said State Lease 17434 to its most North Northwest corner also being the Southeast corner of State Lease No. 17327, said corner also being a point on the common boundary line of said Block 4 and said Block 9, having Coordinates of X = 1,502,112.00 and Y = 360,000.00; thence North 3,200.00 feet along the East line of said State Lease No. 17327 to its Northeast corner, said corner also being a point on the South line of State Lease No. 17742, having Coordinates of X = 1,502,112.00 and Y = 363,200.00; thence along the boundary of said State Lease No. 17742 the following courses: East 3,422.00 feet to its Southeast corner having Coordinates of X = 1,505,534.00 and Y = 363,200.00; North 4,000.00 feet to its Northeast corner having Coordinates of X = 1,505,534.00 and Y = 367,200.00; and West 3,734.00 feet to a point having Coordinates of X = 1,501,800.00 and Y = 367,200.00; thence North 5,790.19 feet to the Point of Beginning, containing **2,229.79 acres**, all as more particularly outlined on a plat on file in the Office of Mineral Resources, Department of Natural Resources. All bearings, distances and coordinates are based on Louisiana Coordinate System of 1927, (North or South Zone).

NOTE: The above description of the Tract nominated for lease has been provided and corrected, where required, exclusively by the nomination party. Any mineral lease selected from this Tract and awarded by the Louisiana State Mineral Board shall be without warranty of any kind, either express, implied, or statutory, including, but not limited to, the

implied warranties of merchantability and fitness for a particular purpose. Should the mineral lease awarded by the Louisiana State Mineral Board be subsequently modified, cancelled or abrogated due to the existence of conflicting leases, operating agreements, private claims or other future obligations or conditions which may affect all or any portion of the leased Tract, it shall not relieve the Lessee of the obligation to pay any bonus due thereon to the Louisiana State Mineral Board, nor shall the Louisiana State Mineral Board be obligated to refund any consideration paid by the Lessor prior to such modification, cancellation, or abrogation, including, but not limited to, bonuses, rentals and royalties.

NOTE: The State of Louisiana does hereby reserve, and this lease shall be subject to, the imprescriptible right of surface use in the nature of a servitude in favor of the Department of Natural Resources, including its Offices and Commissions, for the sole purpose of implementing, constructing, servicing and maintaining approved coastal zone management and/or restoration projects. Utilization of any and all rights derived under this lease by the mineral lessee, its agents, successors or assigns, shall not interfere with nor hinder the reasonable surface use by the Department of Natural Resources, its Offices or Commissions, as herein above reserved.

Applicant: Juanita C. Chatelain

Bidder	Cash Payment	Price/Acre	Rental	Oil	Gas	Other



CAMERON PARISH

P.O. B.
X=1,501,800.00
Y=372,990.19

BLOCK EC0003

BLOCK EC0004

SL 17742

SL 16980

SL 17327

SL 17120

BLOCK EC0009

SL 17433

SL 17434

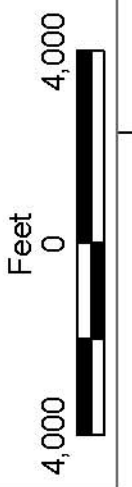
BLOCK EC0005

EAST CAMERON AREA, REVISED

BLOCK EC0008

LA

US



TRACT 37406 - Portion of Blocks 10, and 3, East Cameron Area, Revised, Cameron Parish, Louisiana

The beds and bottoms of all water bodies belonging to the State of Louisiana located in Blocks 10, and 3, East Cameron Area, Revised, together with any present lands formed by accretion to the shoreline or islands formed therein, located in Cameron Parish, Louisiana, owned by and not presently under mineral lease as of June 8, 2005, from the State of Louisiana, the geographical area of which is more fully described as follows: Beginning at a point on the East line of Block 3, East Cameron Area, Revised, having Coordinates of X = 1,493,033.33 and Y = 369,300.00; thence South 12,305.80 feet along the East line of said Block 3 or a projection thereof to a point on the Three Mile Decree derived from the June 16, 1975 United States vs. Louisiana No. 9 Original, having Coordinates of X = 1,493,033.33 and Y = 356,994.20; thence along said Three Mile Decree the following courses: Northwesterly on a straight line to a point having Coordinates of X = 1,488,240 and Y = 359,607, Northwesterly on a straight line to a point on the North line of said Block 10, said point also being on the South line of said Block 3, having Coordinates of X = 1,487,457.39 and Y = 360,000.00, Northwesterly on a straight line to a point having Coordinates of X = 1,483,855 and Y = 361,809, Northwesterly along an arc having a radius of 18,240.60 feet whose center is X = 1,492,040 and Y = 378,110 to a point having Coordinates of X = 1,483,320 and Y = 362,089, Northwesterly on a straight line to a point having Coordinates of X = 1,481,464 and Y = 363,099, and Northwesterly on a straight line to a point having Coordinates of X = 1,481,200.00 and Y = 363,223.65; thence North 6,076.35 feet to a point having Coordinates of X = 1,481,200.00 and Y = 369,300.00; thence East 11,833.33 feet to the point of beginning, containing approximately **2,488.53 acres, LESS AND EXCEPT** that portion thereof, if any, lying seaward of the line three nautical miles from the coast line of Louisiana, as said three mile line has been decreed by the Supreme Court of the United States, as determined by a Special Master appointed therein, in litigation styled **United States v. State of Louisiana et al No. 9 Original**, in 1975, all as more particularly outlined on a plat in the Office of Mineral Resources, Department of Natural Resources. All bearings, distances and coordinates are based on the Louisiana Coordinate System of 1927, (South Zone).

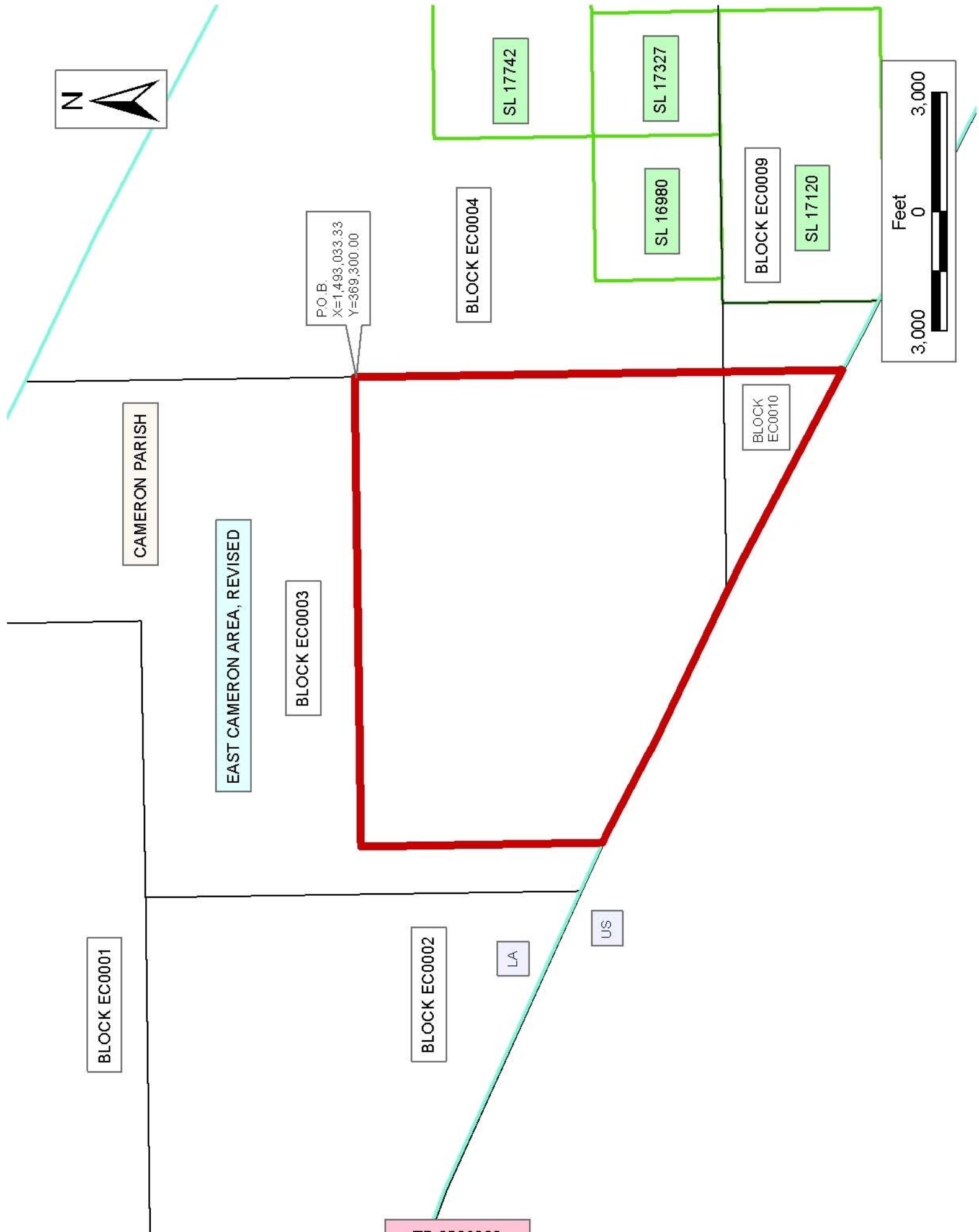
NOTE: The above description of the Tract nominated for lease has been provided and corrected, where required, exclusively by the nomination party. Any mineral lease selected from this Tract and awarded by the Louisiana State Mineral Board shall be without warranty of any kind, either express, implied, or statutory, including, but not limited to, the implied warranties of merchantability and fitness for a particular purpose. Should the mineral lease awarded by the Louisiana State Mineral Board be subsequently modified, cancelled or abrogated due to the existence of conflicting leases, operating agreements, private claims or other future obligations or conditions which may affect all or any portion of the leased Tract, it shall not relieve the Lessee of the obligation to

pay any bonus due thereon to the Louisiana State Mineral Board, nor shall the Louisiana State Mineral Board be obligated to refund any consideration paid by the Lessor prior to such modification, cancellation, or abrogation, including, but not limited to, bonuses, rentals and royalties.

NOTE: The State of Louisiana does hereby reserve, and this lease shall be subject to, the imprescriptible right of surface use in the nature of a servitude in favor of the Department of Natural Resources, including its Offices and Commissions, for the sole purpose of implementing, constructing, servicing and maintaining approved coastal zone management and/or restoration projects. Utilization of any and all rights derived under this lease by the mineral lessee, its agents, successors or assigns, shall not interfere with nor hinder the reasonable surface use by the Department of Natural Resources, its Offices or Commissions, as herein above reserved.

Applicant: Juanita C. Chatelain

Bidder	Cash Payment	Price/Acre	Rental	Oil	Gas	Other



P.O.B.
X=1493,033.33
Y=369,300.00

CAMERON PARISH

EAST CAMERON AREA, REVISED

BLOCK EC0001

BLOCK EC0003

BLOCK EC0004

BLOCK EC0002

BLOCK EC0010

BLOCK EC0009

LA

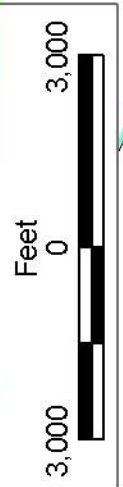
US

SL 17742

SL 17327

SL 16980

SL 17120



TRACT 37407 - Portion of Block 5, East Cameron Area, Revised, Cameron Parish, Louisiana

The beds and bottoms of all water bodies belonging to the State of Louisiana located in Block 5, East Cameron Area, Revised, together with any present lands formed by accretion to the shoreline or islands formed therein, located in Cameron Parish, Louisiana, owned by and not presently under mineral lease as of June 8, 2005, from the State of Louisiana, the geographical area of which is more fully described as follows: Beginning at the Northwest corner of Block 5, East Cameron Area, Revised, said corner also being a point on the Coastline as per the Supreme Court Decree dated June 16, 1975, having Coordinates of X = 1,509,516.10 and Y = 368,912.90; thence along said Coastline the following courses: Southeasterly on a straight line to a point having Coordinates of X = 1,513,280 and Y = 366,930, Southeasterly on a straight line having Coordinates of X = 1,524,274.14 and Y = 361,803.63; thence South 1,803.63 feet to a point on the South line of said Block 5, having Coordinates of X = 1,524,274.14 and Y = 360,000.00; thence West 14,758.05 feet along the South line of said Block 5 to its Southwest corner, said corner also being the Southeast corner of Block 4, having Coordinates of X = 1,509,516.10 and Y = 360,000.00; thence North 8,912.93 feet along the west line of said Block 5 to the Point of Beginning, containing **1,786.62 acres**, all as more particularly outlined on a plat on file in the Office of Mineral Resources, Department of Natural Resources. All bearings, distances and coordinates are based on Louisiana Coordinate System of 1927, (North or South Zone).

NOTE: The above description of the Tract nominated for lease has been provided and corrected, where required, exclusively by the nomination party. Any mineral lease selected from this Tract and awarded by the Louisiana State Mineral Board shall be without warranty of any kind, either express, implied, or statutory, including, but not limited to, the implied warranties of merchantability and fitness for a particular purpose. Should the mineral lease awarded by the Louisiana State Mineral Board be subsequently modified, cancelled or abrogated due to the existence of conflicting leases, operating agreements, private claims or other future obligations or conditions which may affect all or any portion of the leased Tract, it shall not relieve the Lessee of the obligation to pay any bonus due thereon to the Louisiana State Mineral Board, nor shall the Louisiana State Mineral Board be obligated to refund any consideration paid by the Lessor prior to such modification, cancellation, or abrogation, including, but not limited to, bonuses, rentals and royalties.

NOTE: The State of Louisiana does hereby reserve, and this lease shall be subject to, the imprescriptible right of surface use in the nature of a servitude in favor of the Department of Natural Resources, including its Offices and Commissions, for the sole purpose of implementing, constructing, servicing and maintaining approved coastal zone management and/or restoration projects. Utilization of any and all rights derived under this lease by the mineral lessee, its agents, successors or assigns,

shall not interfere with nor hinder the reasonable surface use by the Department of Natural Resources, its Offices or Commissions, as herein above reserved.

Applicant: Juanita C. Chatelain

Bidder	Cash Payment	Price/Acre	Rental	Oil	Gas	Other



CAMERON PARISH

P.O.B.
X=1,509,516.10
Y=368,912.90

BLOCK EC0004

SL 17742

BLOCK EC0005

BLOCK EC0009

SL 17433

BLOCK EC0008

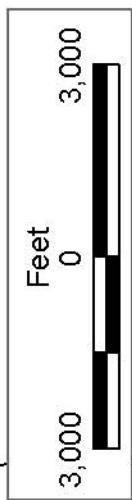
SL 17434

BLOCK EC0007

EAST CAMERON AREA, REVISED

LA

US



TRACT 37408 - Portion of Block 8, East Cameron Area, Revised, Cameron Parish, Louisiana

The beds and bottoms of all water bodies belonging to the State of Louisiana located in Block 8, East Cameron Area, Revised, together with any present lands formed by accretion to the shoreline or islands formed therein, located in Cameron Parish, Louisiana, owned by and not presently under mineral lease as of June 8, 2005, from the State of Louisiana, the geographical area of which is more fully described as follows: Beginning at a point on the East line of Block 8, East Cameron Area, Revised, having Coordinates of X = 1,524,274.14 and Y = 352,685.73; thence West 14,758.05 feet to a point on the West line of said Block 8 having Coordinates of X = 1,509,516.10 and Y = 352,685.73; thence North 7,314.27 feet along the West line of said Block 8 to its Northwest corner having Coordinates of X = 1,509,516.10 and Y = 360,000.00; thence East 14,758.05 feet along the North line of said Block 8 to its Northeast corner having Coordinates of X = 1,524,274.14 and Y = 360,000.00; thence South 7,314.27 feet along the East line of said Block 8 to the point of beginning, **LESS AND EXCEPT** that portion if any, of the Rockefeller Wildlife Management Area and Game Preserve that may lie within the above described tract, containing approximately **2,478.06 acres**, all as more particularly outlined on a plat on file in the Office of Mineral Resources, Department of Natural Resources. All bearings, distances and coordinates are based on Louisiana Coordinate System of 1927, (North or South Zone).

NOTE: The above description of the Tract nominated for lease has been provided and corrected, where required, exclusively by the nomination party. Any mineral lease selected from this Tract and awarded by the Louisiana State Mineral Board shall be without warranty of any kind, either express, implied, or statutory, including, but not limited to, the implied warranties of merchantability and fitness for a particular purpose. Should the mineral lease awarded by the Louisiana State Mineral Board be subsequently modified, cancelled or abrogated due to the existence of conflicting leases, operating agreements, private claims or other future obligations or conditions which may affect all or any portion of the leased Tract, it shall not relieve the Lessee of the obligation to pay any bonus due thereon to the Louisiana State Mineral Board, nor shall the Louisiana State Mineral Board be obligated to refund any consideration paid by the Lessor prior to such modification, cancellation, or abrogation, including, but not limited to, bonuses, rentals and royalties.

NOTE: The State of Louisiana does hereby reserve, and this lease shall be subject to, the imprescriptible right of surface use in the nature of a servitude in favor of the Department of Natural Resources, including its Offices and Commissions, for the sole purpose of implementing, constructing, servicing and maintaining approved coastal zone management and/or restoration projects. Utilization of any and all rights derived under this lease by the mineral lessee, its agents, successors or assigns, shall not interfere with nor hinder the reasonable surface use by the

Department of Natural Resources, its Offices or Commissions, as herein above reserved.

Applicant: Juanita C. Chatelain

Bidder	Cash Payment	Price/Acre	Rental	Oil	Gas	Other

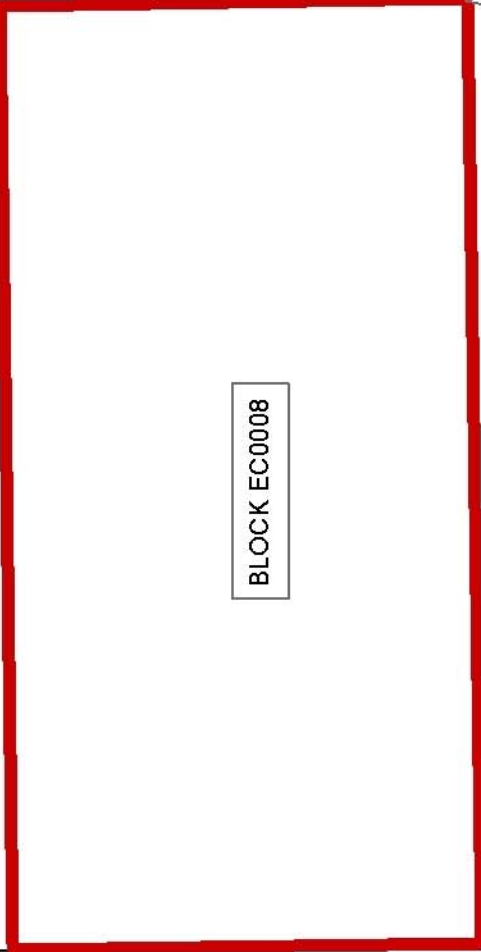
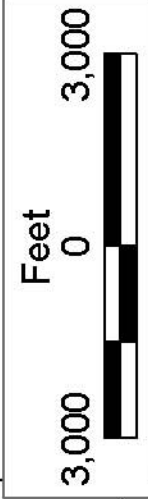


CAMERON PARISH

BLOCK EC0005

BLOCK EC0007

P.O.B.
X=1,524,274.14
Y=352,685.73



BLOCK EC0008

EAST CAMERON AREA, REVISED

BLOCK EC0004

BLOCK EC0009

LA

US

SL 17742

SL 17434

SL 17433

TRACT 37409 - Portion of Block 9, East Cameron Area, Revised, Cameron Parish, Louisiana

The beds and bottoms of all water bodies belonging to the State of Louisiana located in Block 9, East Cameron Area, Revised, together with any present lands formed by accretion to the shoreline or islands formed therein, located in Cameron Parish, Louisiana, owned by and not presently under mineral lease as of June 8, 2005, from the State of Louisiana, the geographical area of which is more fully described as follows: Beginning at the most Easterly Southeast corner of State Lease No. 17120, said corner also being a point on the West line of State Lease No. 17433, having Coordinates of X = 1,502,112.00 and Y = 355,922.00; thence South 3,725.48 feet along the West line of said State Lease No. 17433 to its Southwest corner, said corner also being a point on the Three Mile Decree derived from the June 16, 1975 United States vs. Louisiana No. 9 Original, having Coordinates of X = 1,502,112.00 and Y = 352,196.52; thence North 62 degrees 13 minutes 07 seconds West 4,356.12 feet along said Three Mile Decree to the most Southerly Southeast corner of said State Lease No. 17120 having Coordinates of X = 1,498,258.00 and Y = 354,226.91; thence along the boundary of said State Lease No. 17120 the following courses: North 1,695.09 feet to a point having Coordinates of X = 1,498,258.00 and Y = 355,922.00 and East 3,854.00 feet to the point of beginning, containing approximately **239.79 acres, LESS AND EXCEPT** that portion thereof, if any, lying seaward of the line three nautical miles from the coast line of Louisiana, as said three mile line has been decreed by the Supreme Court of the United States, as determined by a Special Master appointed therein, in litigation styled **United States v. State of Louisiana et al No. 9 Original**, in 1975, all as more particularly outlined on a plat in the Office of Mineral Resources, Department of Natural Resources. All bearings, distances and coordinates are based on the Louisiana Coordinate System of 1927, (South Zone).

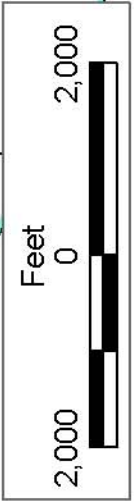
NOTE: The above description of the Tract nominated for lease has been provided and corrected, where required, exclusively by the nomination party. Any mineral lease selected from this Tract and awarded by the Louisiana State Mineral Board shall be without warranty of any kind, either express, implied, or statutory, including, but not limited to, the implied warranties of merchantability and fitness for a particular purpose. Should the mineral lease awarded by the Louisiana State Mineral Board be subsequently modified, cancelled or abrogated due to the existence of conflicting leases, operating agreements, private claims or other future obligations or conditions which may affect all or any portion of the leased Tract, it shall not relieve the Lessee of the obligation to pay any bonus due thereon to the Louisiana State Mineral Board, nor shall the Louisiana State Mineral Board be obligated to refund any consideration paid by the Lessor prior to such modification, cancellation, or abrogation, including, but not limited to, bonuses, rentals and royalties.

NOTE: The State of Louisiana does hereby reserve, and this lease shall be subject to, the imprescriptible right of surface use in the nature of a

servitude in favor of the Department of Natural Resources, including its Offices and Commissions, for the sole purpose of implementing, constructing, servicing and maintaining approved coastal zone management and/or restoration projects. Utilization of any and all rights derived under this lease by the mineral lessee, its agents, successors or assigns, shall not interfere with nor hinder the reasonable surface use by the Department of Natural Resources, its Offices or Commissions, as herein above reserved.

Applicant: Juanita C. Chatelain

Bidder	Cash Payment	Price/Acre	Rental	Oil	Gas	Other



CAMERON PARISH

BLOCK EC0004

EAST CAMERON AREA, REVISED

SL 17434

P.O.B.
X=1,502,112.00
Y=355,922.00

SL 17433

SL 17327

SL 17120

BLOCK EC0009

LA

US

SL 16980

BLOCK EC0010

TRACT 37410 - Portion of Blocks 8, and 9, East Cameron Area, Revised, Cameron Parish, Louisiana

The beds and bottoms of all water bodies belonging to the State of Louisiana located in Blocks 8, and 9, East Cameron Area, Revised, together with any present lands formed by accretion to the shoreline or islands formed therein, located in Cameron Parish, Louisiana, owned by and not presently under mineral lease as of June 8, 2005, from the State of Louisiana, the geographical area of which is more fully described as follows: Beginning at a point on the East line of Block 8, East Cameron Area, Revised, having Coordinates of X = 1,524,274.14 and Y = 352,685.73; thence South 7,443.78 feet along the East line of said Block 8 to its Southeast corner having Coordinates of X = 1,524,274.14 and Y = 345,241.95; thence West 7,659.75 feet along the South line of said Block 8 to a point on the Three Mile Decree derived from the June 16, 1975 United States vs. Louisiana No. 9 Original, having Coordinates of X = 1,516,614.39 and Y = 345,241.95; thence along said Three Mile Decree the following course: North 62 degree 29 minutes 04 seconds West 153.79 feet to a point having Coordinates of X = 1,516,478.00 and Y = 345,313.00, North 65 degrees 00 minutes 09 seconds West 7,681.46 feet to a point on boundary line of said Block 9, having Coordinates of X = 1,509,516.10 and Y = 348,559.04, thence North 65 degree 00 minutes 09 seconds West 3,525.33 feet to the Southeast corner of State Lease No. 17434 having Coordinates of X = 1,506,321.00 and Y = 350,048.77; thence North 2,636.96 feet along the East line of said State Lease No. 17434 to a point having Coordinates of X = 1,506,321.00 and Y = 352,685.73; thence East 3,195.10 feet to a point on the boundary line of said Block 9 having Coordinates of X = 1,509,516.10 and Y = 352,685.73; thence East 14,758.05 feet to the point of beginning, containing approximately **2,499.13 acres, LESS AND EXCEPT** that portion thereof, if any, lying seaward of the line three nautical miles from the coast line of Louisiana, as said three mile line has been decreed by the Supreme Court of the United States, as determined by a Special Master appointed therein, in litigation styled **United States v. State of Louisiana et al No. 9 Original**, in 1975, all as more particularly outlined on a plat in the Office of Mineral Resources, Department of Natural Resources. All bearings, distances and coordinates are based on the Louisiana Coordinate System of 1927, (South Zone).

NOTE: The above description of the Tract nominated for lease has been provided and corrected, where required, exclusively by the nomination party. Any mineral lease selected from this Tract and awarded by the Louisiana State Mineral Board shall be without warranty of any kind, either express, implied, or statutory, including, but not limited to, the implied warranties of merchantability and fitness for a particular purpose. Should the mineral lease awarded by the Louisiana State Mineral Board be subsequently modified, cancelled or abrogated due to the existence of conflicting leases, operating agreements, private claims or other future obligations or conditions which may affect all or any portion of the leased Tract, it shall not relieve the Lessee of the obligation to pay any bonus due thereon to the Louisiana State Mineral Board, nor shall

the Louisiana State Mineral Board be obligated to refund any consideration paid by the Lessor prior to such modification, cancellation, or abrogation, including, but not limited to, bonuses, rentals and royalties.

NOTE: The State of Louisiana does hereby reserve, and this lease shall be subject to, the imprescriptible right of surface use in the nature of a servitude in favor of the Department of Natural Resources, including its Offices and Commissions, for the sole purpose of implementing, constructing, servicing and maintaining approved coastal zone management and/or restoration projects. Utilization of any and all rights derived under this lease by the mineral lessee, its agents, successors or assigns, shall not interfere with nor hinder the reasonable surface use by the Department of Natural Resources, its Offices or Commissions, as herein above reserved.

Applicant: Juanita C. Chatelain

Bidder	Cash Payment	Price/Acre	Rental	Oil	Gas	Other

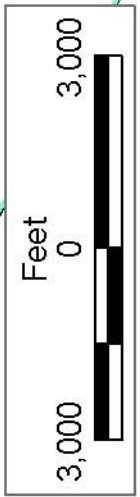


BLOCK EC0007

P.O.B.
X=1,524,274.14
Y=352,685.73

BLOCK EC0016

BLOCK EC0015



CAMERON PARISH

EAST CAMERON AREA, REVISED

BLOCK EC0008

LA

US

BLOCK EC0009

SL 17434

SL 17433

TRACT 37411 - Portion of Block 18, East Cameron Area, Revised, Cameron Parish, Louisiana

The beds and bottoms of all water bodies belonging to the State of Louisiana located in Block 18, East Cameron Area, Revised, together with any present lands formed by accretion to the shoreline or islands formed therein, located in Cameron Parish, Louisiana, owned by and not presently under mineral lease as of June 8, 2005, from the State of Louisiana, the geographical area of which is more fully described as follows: Beginning at a point on the South line of Block 18, East Cameron Area, Revised, having Coordinates of X = 1,560,505.41 and Y = 330,483.90; thence West 6,715.17 feet along the South line of said Block 18 to its Southwest corner, having Coordinates of X = 1,553,790.24 and Y = 330,483.90; thence North 16,689.49 feet along the West line of Block 18 to its Northwest corner, said point also being on the Coastline as per the Supreme Court Decree dated June 16, 1975, having Coordinates of X = 1,553,790.24 and Y = 347,173.39; thence along said Coastline the following courses: Southeasterly on a straight line to a point having Coordinates of X = 1,553,840 and Y = 347,150, Southeasterly on a straight line to a point having Coordinates of X = 1,555,105 and Y = 346,865, Southeasterly on a straight line to a point having Coordinates of X = 1,558,720 and Y = 345,375, and Southeasterly on a straight line to a point having Coordinates of X = 1,560,505.41 and Y = 344,842.98; thence South 14,359.08 feet to the point of beginning, containing **2,395.97 acres**, all as more particularly outlined on a plat on file in the Office of Mineral Resources, Department of Natural Resources. All bearings, distances and coordinates are based on Louisiana Coordinate System of 1927, (North or South Zone).

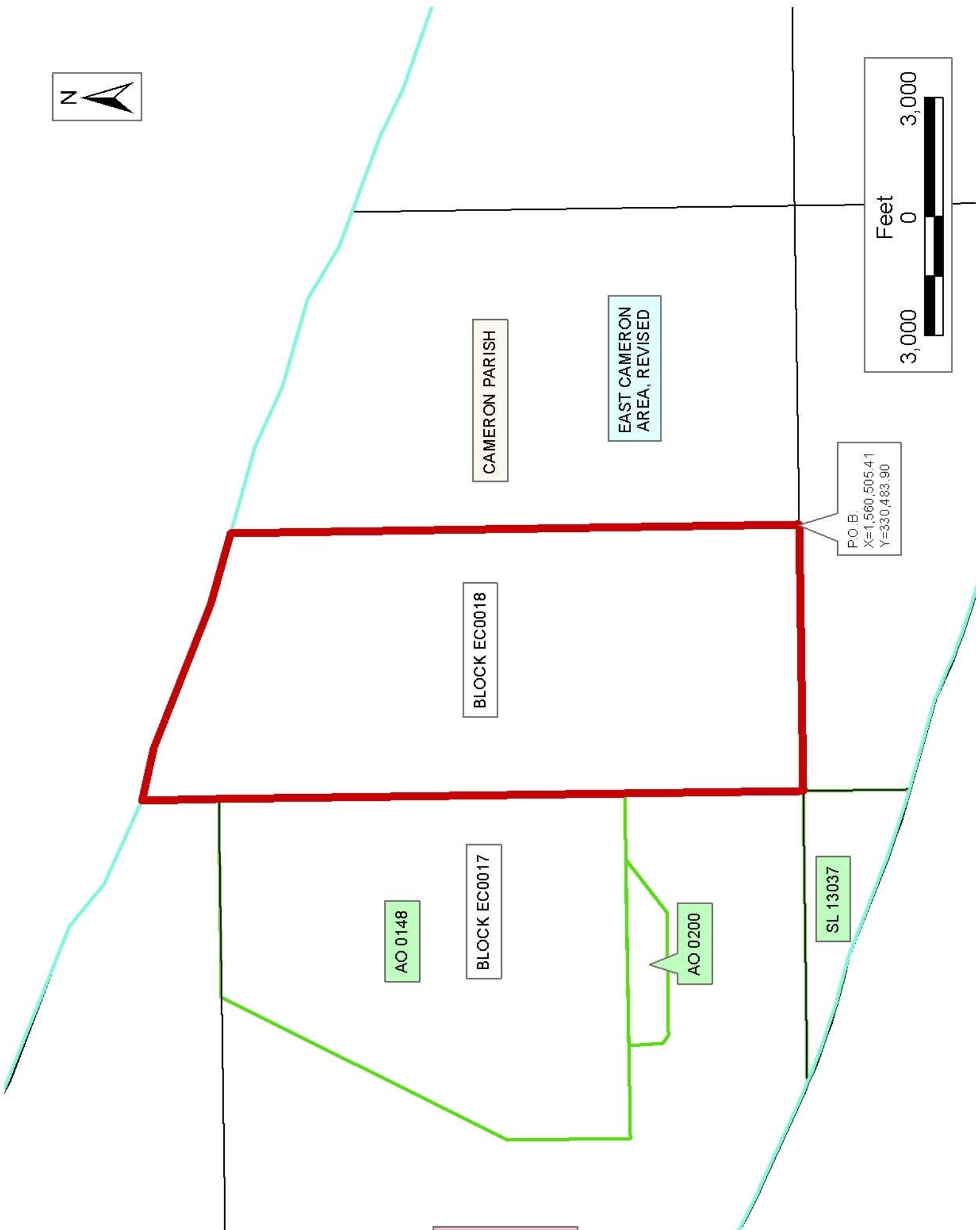
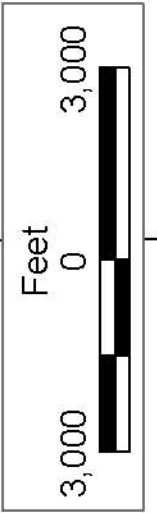
NOTE: The above description of the Tract nominated for lease has been provided and corrected, where required, exclusively by the nomination party. Any mineral lease selected from this Tract and awarded by the Louisiana State Mineral Board shall be without warranty of any kind, either express, implied, or statutory, including, but not limited to, the implied warranties of merchantability and fitness for a particular purpose. Should the mineral lease awarded by the Louisiana State Mineral Board be subsequently modified, cancelled or abrogated due to the existence of conflicting leases, operating agreements, private claims or other future obligations or conditions which may affect all or any portion of the leased Tract, it shall not relieve the Lessee of the obligation to pay any bonus due thereon to the Louisiana State Mineral Board, nor shall the Louisiana State Mineral Board be obligated to refund any consideration paid by the Lessor prior to such modification, cancellation, or abrogation, including, but not limited to, bonuses, rentals and royalties.

NOTE: The State of Louisiana does hereby reserve, and this lease shall be subject to, the imprescriptible right of surface use in the nature of a servitude in favor of the Department of Natural Resources, including its Offices and Commissions, for the sole purpose of implementing, constructing, servicing and maintaining approved coastal zone management

and/or restoration projects. Utilization of any and all rights derived under this lease by the mineral lessee, its agents, successors or assigns, shall not interfere with nor hinder the reasonable surface use by the Department of Natural Resources, its Offices or Commissions, as herein above reserved.

Applicant: Gulf Coast Oil Properties, Inc.

Bidder	Cash Payment	Price/Acre	Rental	Oil	Gas	Other



P.O.B.
X=1,560,505.41
Y=330,483.90

TRACT 37412 - Portion of Block 18, East Cameron Area, Revised, Cameron Parish, Louisiana

The beds and bottoms of all water bodies belonging to the State of Louisiana located in Block 18, East Cameron Area, Revised, together with any present lands formed by accretion to the shoreline or islands formed therein, located in Cameron Parish, Louisiana, owned by and not presently under mineral lease as of June 8, 2005, from the State of Louisiana, the geographical area of which is more fully described as follows: Beginning at a point on the South line of Block 18, East Cameron Area, Revised, having Coordinates of X = 1,560,505.41 and Y = 330,483.90; thence North 14,359.08 feet to a point on the North line of said Block 18, said point also being on the Coastline as per the Supreme Court Decree dated June 16, 1975, having Coordinates of X = 1,560,505.41 and Y = 344,842.98; thence along said Coastline the following courses: Southeasterly on a straight line to a point having Coordinates of X = 1,562,680 and Y = 344,195; Southeasterly on a straight line to a point having Coordinates of X = 1,564,160 and Y = 343,480; Southeasterly on a straight line to a point having Coordinates of X = 1,566,375 and Y = 342,810; Southeasterly on a straight line to a point having Coordinates of X = 1,566,890 and Y = 342,490; Southeasterly on a straight line to a point having Coordinates of X = 1,567,695 and Y = 341,990; and Southeasterly on a straight line to the Northeast corner of said Block 18 having Coordinates of X = 1,568,548.29 and Y = 341,657.57; thence South 11,173.67 feet along the East line of said Block 18 to its Southeast corner having Coordinates of X = 1,568,548.29 and Y = 330,483.90; thence West 8,042.87 feet along the South line of said Block 18 to the point of beginning, containing **2,381.39 acres**, all as more particularly outlined on a plat on file in the Office of Mineral Resources, Department of Natural Resources. All bearings, distances and coordinates are based on Louisiana Coordinate System of 1927, (North or South Zone).

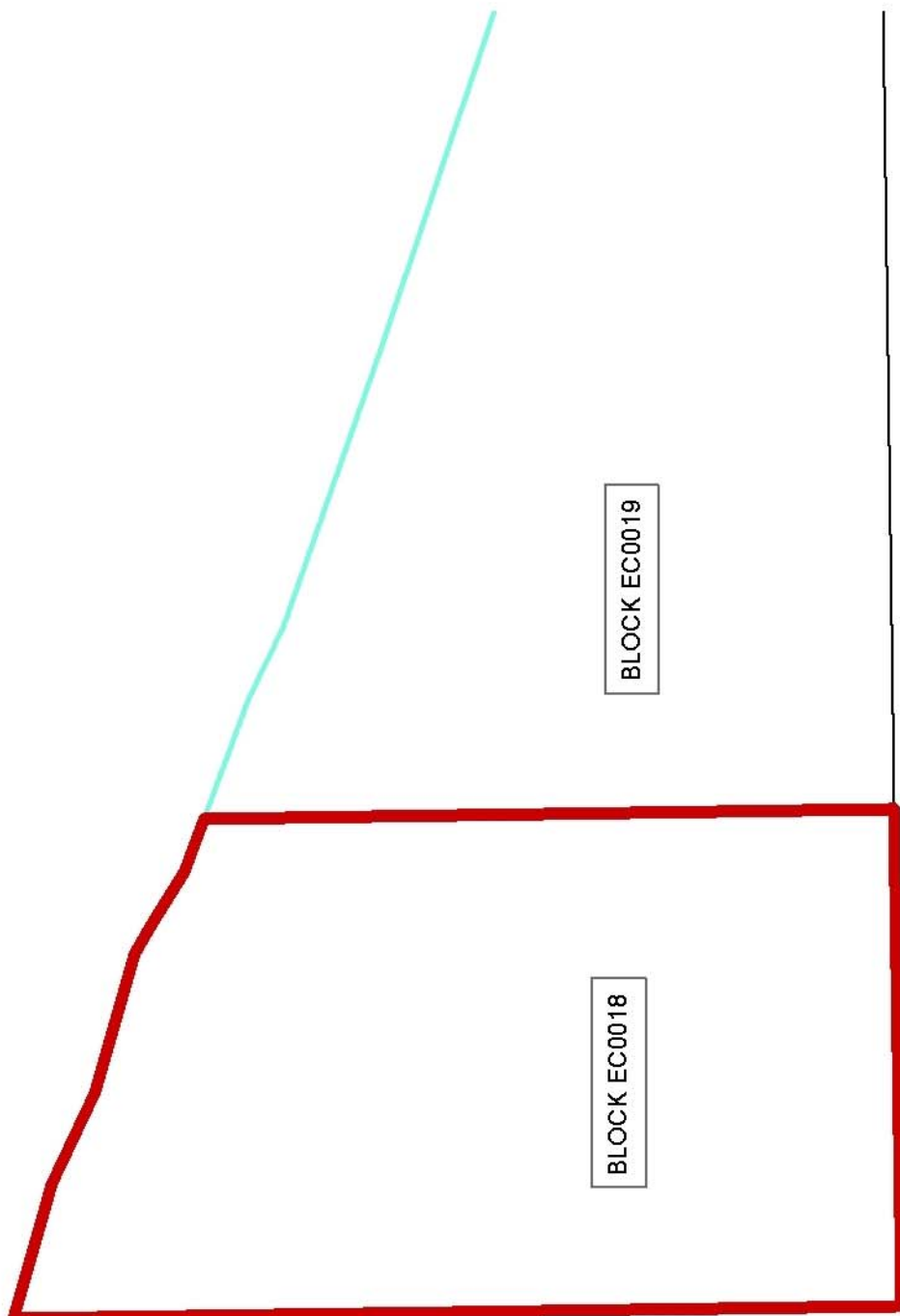
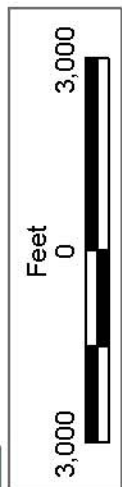
NOTE: The above description of the Tract nominated for lease has been provided and corrected, where required, exclusively by the nomination party. Any mineral lease selected from this Tract and awarded by the Louisiana State Mineral Board shall be without warranty of any kind, either express, implied, or statutory, including, but not limited to, the implied warranties of merchantability and fitness for a particular purpose. Should the mineral lease awarded by the Louisiana State Mineral Board be subsequently modified, cancelled or abrogated due to the existence of conflicting leases, operating agreements, private claims or other future obligations or conditions which may affect all or any portion of the leased Tract, it shall not relieve the Lessee of the obligation to pay any bonus due thereon to the Louisiana State Mineral Board, nor shall the Louisiana State Mineral Board be obligated to refund any consideration paid by the Lessor prior to such modification, cancellation, or abrogation, including, but not limited to, bonuses, rentals and royalties.

NOTE: The State of Louisiana does hereby reserve, and this lease shall be subject to, the imprescriptible right of surface use in the nature of a

servitude in favor of the Department of Natural Resources, including its Offices and Commissions, for the sole purpose of implementing, constructing, servicing and maintaining approved coastal zone management and/or restoration projects. Utilization of any and all rights derived under this lease by the mineral lessee, its agents, successors or assigns, shall not interfere with nor hinder the reasonable surface use by the Department of Natural Resources, its Offices or Commissions, as herein above reserved.

Applicant: Gulf Coast Oil Properties, Inc.

Bidder	Cash Payment	Price/Acre	Rental	Oil	Gas	Other



CAMERON PARISH

BLOCK EC0018

BLOCK EC0019

EAST CAMERON AREA, REVISED

P.O.B.
X=1,560,505.41
Y=330,483.90

AO 0148

AO 0200

SL 13037

TRACT 37413 - Portion of Block 19, East Cameron Area, Revised, Cameron Parish, Louisiana

The beds and bottoms of all water bodies belonging to the State of Louisiana located in Block 19, East Cameron Area, Revised, together with any present lands formed by accretion to the shoreline or islands formed therein, located in Cameron Parish, Louisiana, owned by and not presently under mineral lease as of June 8, 2005, from the State of Louisiana, the geographical area of which is more fully described as follows: Beginning at a point on the East line of Block 19, East Cameron Area, Revised, having Coordinates of X = 1,583,306.34 and Y = 332,800.00; thence West 14,758.05 feet to a point on the West line of said Block 19 having Coordinates of X = 1,568,548.29 and Y = 332,800.00; thence North 8,857.57 feet along the West line of said Block 19 to its Northwest corner, said corner also being a point on the Coastline as per the Supreme Court Decree dated June 16, 1975, having Coordinates of X = 1,568,548.29 and Y = 341,657.57; thence along said Coastline the following courses: Southeasterly on a straight line to a point having Coordinates of X = 1,570,480 and Y = 340,905; Southeasterly on a straight line to a point having Coordinates of X = 1,571,630 and Y = 340,335; Southeasterly on a straight line to a point having Coordinates of X = 1,576,170 and Y = 338,670; Southeasterly on a straight line to a point having Coordinates of X = 1,581,450 and Y = 336,800; and Southeasterly on a straight line to the Northeast corner of said Block 19 having Coordinates of X = 1,583,306.34 and Y = 336,249.72; thence South 3,449.72 feet along the East line of said Block 19 to the point of beginning, containing **2,038.04 acres**, all as more particularly outlined on a plat on file in the Office of Mineral Resources, Department of Natural Resources. All bearings, distances and coordinates are based on Louisiana Coordinate System of 1927, (North or South Zone).

NOTE: The above description of the Tract nominated for lease has been provided and corrected, where required, exclusively by the nomination party. Any mineral lease selected from this Tract and awarded by the Louisiana State Mineral Board shall be without warranty of any kind, either express, implied, or statutory, including, but not limited to, the implied warranties of merchantability and fitness for a particular purpose. Should the mineral lease awarded by the Louisiana State Mineral Board be subsequently modified, cancelled or abrogated due to the existence of conflicting leases, operating agreements, private claims or other future obligations or conditions which may affect all or any portion of the leased Tract, it shall not relieve the Lessee of the obligation to pay any bonus due thereon to the Louisiana State Mineral Board, nor shall the Louisiana State Mineral Board be obligated to refund any consideration paid by the Lessor prior to such modification, cancellation, or abrogation, including, but not limited to, bonuses, rentals and royalties.

NOTE: The State of Louisiana does hereby reserve, and this lease shall be subject to, the imprescriptible right of surface use in the nature of a servitude in favor of the Department of Natural Resources, including its

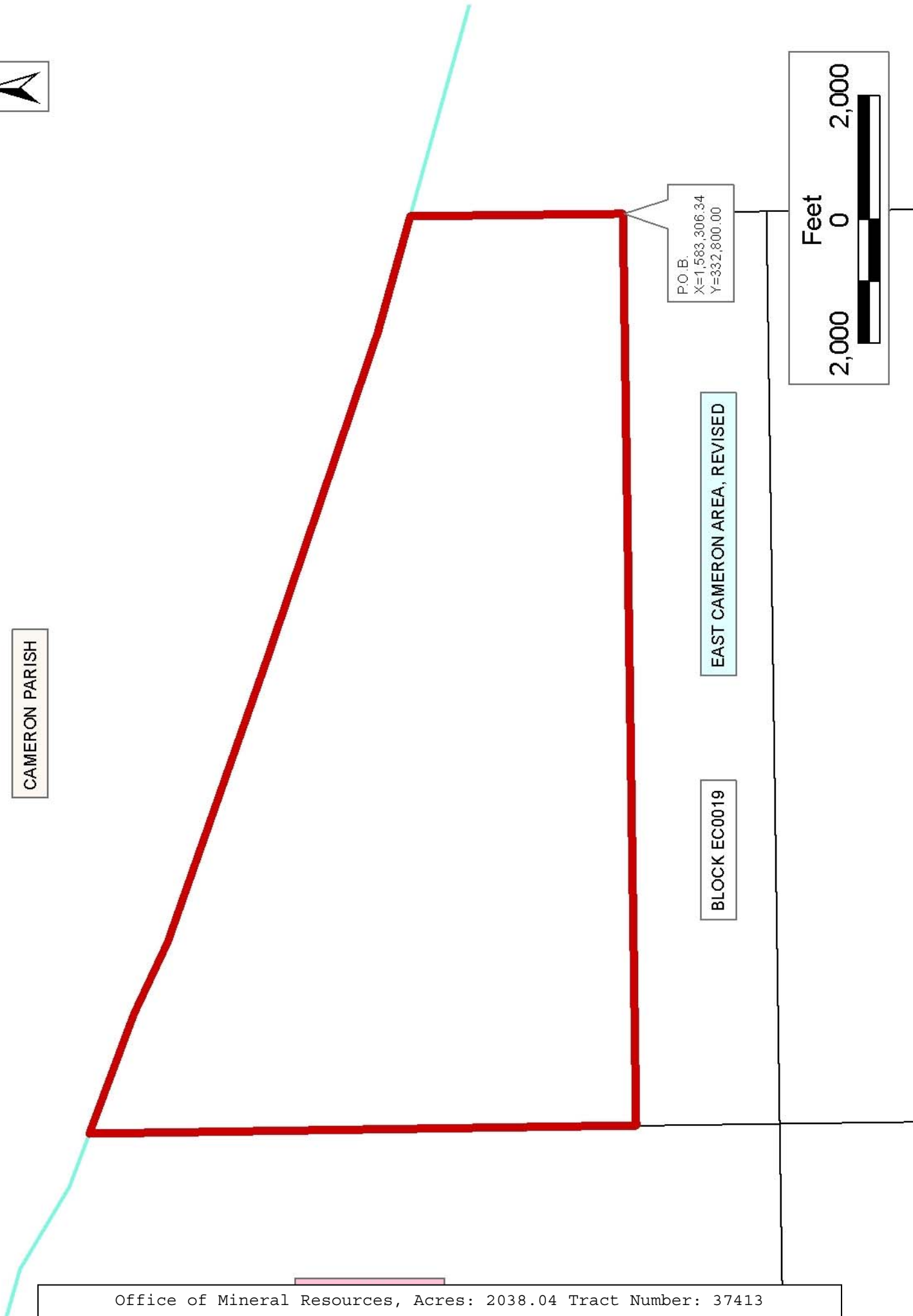
Offices and Commissions, for the sole purpose of implementing, constructing, servicing and maintaining approved coastal zone management and/or restoration projects. Utilization of any and all rights derived under this lease by the mineral lessee, its agents, successors or assigns, shall not interfere with nor hinder the reasonable surface use by the Department of Natural Resources, its Offices or Commissions, as herein above reserved.

Applicant: Gulf Coast Oil Properties, Inc.

Bidder	Cash Payment	Price/Acre	Rental	Oil	Gas	Other



CAMERON PARISH



P.O.B.
X=1,583,306.34
Y=332,800.00

EAST CAMERON AREA, REVISED

BLOCK EC0019

