

TRACT 37394 - Portion of Blocks 1, and 2, West Cameron Area, Revised, Cameron Parish, Louisiana

The beds and bottoms of all water bodies belonging to the State of Louisiana located in Blocks 1, and 2, West Cameron Area, Revised, together with any present lands formed by accretion to the shoreline or islands formed therein, located in Cameron Parish, Louisiana, owned by and not presently under mineral lease as of June 8, 2005, from the State of Louisiana, the geographical area of which is more fully described as follows: Beginning at a point on the South line of Block 1, West Cameron Area, Revised, having Coordinates of X = 1,425,600.00 and Y = 393,790.24; thence West 9,793.80 feet along the South lines of said Block 1 and Block 2, to a point having Coordinates of X = 1,415,806.20 and Y = 393,790.24; thence North 12,035.24 feet to a point on the North line of said Block 2 having Coordinates of X = 1,415,806.20 and Y = 405,825.48; said point also being on the Coastline as per the Supreme Court Decree dated June 16, 1975, thence along said Coastline the following courses: Southeasterly on a straight line to a point having Coordinates of X = 1,416,365 and Y = 405,700; Southerly on a straight line to a point having Coordinates of X = 1,424,630 and Y = 403,175; and Southerly on a straight line to a point having Coordinates of X = 1,425,600 and Y = 402,610; thence South 8,819.76 feet to the point of beginning, containing **2,376.47 acres**, all as more particularly outlined on a plat on file in the Office of Mineral Resources, Department of Natural Resources. All bearings, distances and coordinates are based on Louisiana Coordinate System of 1927, (North or South Zone).

NOTE: The above description of the Tract nominated for lease has been provided and corrected, where required, exclusively by the nomination party. Any mineral lease selected from this Tract and awarded by the Louisiana State Mineral Board shall be without warranty of any kind, either express, implied, or statutory, including, but not limited to, the implied warranties of merchantability and fitness for a particular purpose. Should the mineral lease awarded by the Louisiana State Mineral Board be subsequently modified, cancelled or abrogated due to the existence of conflicting leases, operating agreements, private claims or other future obligations or conditions which may affect all or any portion of the leased Tract, it shall not relieve the Lessee of the obligation to pay any bonus due thereon to the Louisiana State Mineral Board, nor shall the Louisiana State Mineral Board be obligated to refund any consideration paid by the Lessor prior to such modification, cancellation, or abrogation, including, but not limited to, bonuses, rentals and royalties.

NOTE: The State of Louisiana does hereby reserve, and this lease shall be subject to, the imprescriptible right of surface use in the nature of a servitude in favor of the Department of Natural Resources, including its Offices and Commissions, for the sole purpose of implementing, constructing, servicing and maintaining approved coastal zone management and/or restoration projects. Utilization of any and all rights derived under this lease by the mineral lessee, its agents, successors or assigns,

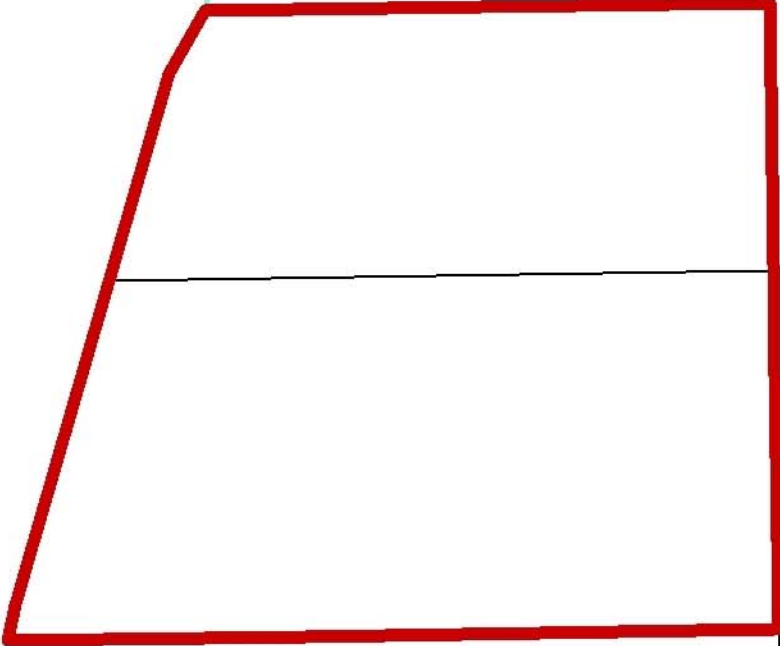
shall not interfere with nor hinder the reasonable surface use by the Department of Natural Resources, its Offices or Commissions, as herein above reserved.

Applicant: Mouton Land Services

Bidder	Cash Payment	Price/Acre	Rental	Oil	Gas	Other



CAMERON PARISH



P.O.B.
X=1,425,600.00
Y=393,790.24

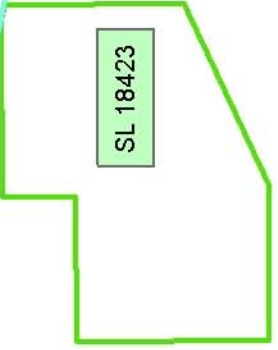
BLOCK WC0001

BLOCK WC0030

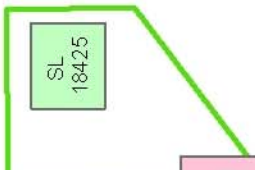
WEST CAMERON AREA, REVISED

BLOCK WC0002

BLOCK WC0029



SL 18423



SL 18425

LA

US



TRACT 37395 - Portion of Block 1, West Cameron Area, Revised, Cameron Parish, Louisiana

The beds and bottoms of all water bodies belonging to the State of Louisiana located in Block 1, West Cameron Area, Revised, together with any present lands formed by accretion to the shoreline or islands formed therein, located in Cameron Parish, Louisiana, owned by and not presently under mineral lease as of June 8, 2005, from the State of Louisiana, the geographical area of which is more fully described as follows: Beginning at a point on the South line of Block 1, West Cameron Area, Revised, having Coordinates of X = 1,425,600.00 and Y = 393,790.24; thence North 8,819.76 feet to a point on the North line of said Block 1, said point being on the Coastline as per the Supreme Court Decree dated June 16, 1975, having Coordinates of X = 1,425,600.00 and Y = 402,610.00; thence along said Coastline the following courses: Southeasterly on a straight line to a point having Coordinates of X = 1,429,035 and Y = 401,760; Southwesterly on a straight line to a point having Coordinates of X = 1,429,020 and Y = 401,485; Southeasterly on a straight line to a point having Coordinates of X = 1,431,465 and Y = 400,740; Northeasterly on a straight line to a point having Coordinates of X = 1,431,526 and Y = 400,742; Southeasterly in a straight line to a point having Coordinates of X = 1,436,899 and Y = 399,820; and Southeasterly on a straight line to the most Northerly Northwest corner of State Lease No. 12725, as amended, having Coordinates of X = 1,437,790.11 and Y = 399,495.50; thence along the boundary of said State Lease No. 12725, as amended, the following courses: South 11 degrees 18 minutes 56 seconds West 102.49 feet to a point having Coordinates of X = 1,437,770.00 and Y = 399,395.00; South 01 degrees 54 minutes 33 seconds East 300.17 feet to a point having Coordinates of X = 1,437,780.00 and Y = 399,095.00; South 14 degrees 02 minutes 11 seconds East 376.23 feet to a point having Coordinates of X = 1,437,871.25 and Y = 398,730.00; South 80 degrees 59 minutes 54 seconds East 383.47 feet to a point having Coordinates of X = 1,438,250.00 and Y = 398,670.00; South 71 degrees 50 minutes 50 seconds East 320.98 feet to a point having Coordinates of X = 1,438,555.00 and Y = 398,570.00; South 52 degrees 31 minutes 26 seconds East 378.02 feet to a point having Coordinates of X = 1,438,855.00 and Y = 398,340.00; South 42 degrees 16 minutes 25 seconds East 371.65 feet to a point having Coordinates of X = 1,439,105.00 and Y = 398,065.00; South 36 degrees 29 minutes 29 seconds East 454.01 feet to a point having Coordinates of X = 1,439,375.00 and Y = 397,700.00; South 69 degrees 01 minutes 35 seconds East 321.29 feet to a point having Coordinates of X = 1,439,675.00 and Y = 397,585.00; South 30 degrees 27 minutes 56 seconds East 98.62 feet to a point having Coordinates of X = 1,439,725.00 and Y = 397,500.00; South 71 degrees 12 minutes 54 seconds East 776.35 feet to a point having Coordinates of X = 1,440,460.00 and Y = 397,250.00; South 77 degrees 55 minutes 56 seconds East 741.38 feet to a point having Coordinates of X = 1,441,185.00 and Y = 397,095.00; East 700.00 feet to a point having Coordinates of X = 1,441,885.00 and Y = 397,095.00; North 74 degrees 14 minutes 56 seconds East 202.61 feet to a point having Coordinates of X = 1,442,080.00 and Y = 397,150.00; North 51 degrees 06 minutes 56 seconds East 199.12 feet to a

point having Coordinates of X = 1,442,235.00 and Y = 397,275.00; North 33 degrees 18 minutes 38 seconds East 209.40 feet to a point having Coordinates of X = 1,442,350 and Y = 397,450; North 03 degrees 21 minutes 59 seconds East 255.44 feet to a point having Coordinates of X = 1,442,365.00 and Y = 397,705.00; and North 18 degrees 26 minutes 06 seconds West 135.81 feet to its most Northerly Northeast corner, said corner also being a point on said Coastline, having Coordinates of X = 1,442,322.05 and Y = 397,833.84; thence Southeasterly in a straight line along said Coastline to the Northeast corner of said Block 1 having Coordinates of X = 1,443,236.19 and Y = 397,488.56; thence South 3,698.32 feet along the East line of said Block 1 to its Southeast corner having Coordinates of X = 1,443,236.19 and Y = 393,790.24; thence West 17,636.19 feet along the South line of said Block 1 to the point of beginning, containing **2,485.22 acres**, all as more particularly outlined on a plat on file in the Office of Mineral Resources, Department of Natural Resources. All bearings, distances and coordinates are based on Louisiana Coordinate System of 1927, (North or South Zone).

NOTE: The above description of the Tract nominated for lease has been provided and corrected, where required, exclusively by the nomination party. Any mineral lease selected from this Tract and awarded by the Louisiana State Mineral Board shall be without warranty of any kind, either express, implied, or statutory, including, but not limited to, the implied warranties of merchantability and fitness for a particular purpose. Should the mineral lease awarded by the Louisiana State Mineral Board be subsequently modified, cancelled or abrogated due to the existence of conflicting leases, operating agreements, private claims or other future obligations or conditions which may affect all or any portion of the leased Tract, it shall not relieve the Lessee of the obligation to pay any bonus due thereon to the Louisiana State Mineral Board, nor shall the Louisiana State Mineral Board be obligated to refund any consideration paid by the Lessor prior to such modification, cancellation, or abrogation, including, but not limited to, bonuses, rentals and royalties.

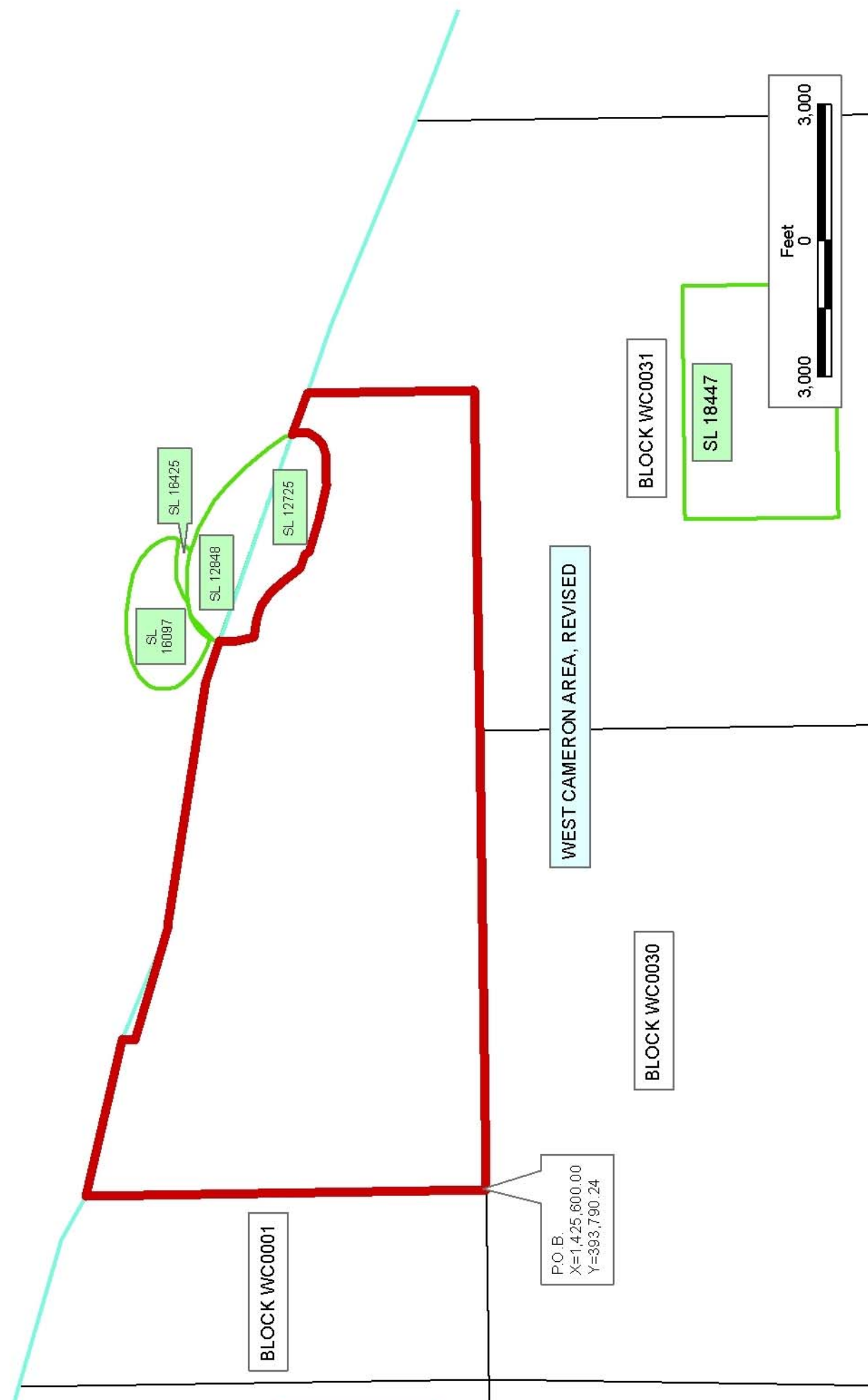
NOTE: The State of Louisiana does hereby reserve, and this lease shall be subject to, the imprescriptible right of surface use in the nature of a servitude in favor of the Department of Natural Resources, including its Offices and Commissions, for the sole purpose of implementing, constructing, servicing and maintaining approved coastal zone management and/or restoration projects. Utilization of any and all rights derived under this lease by the mineral lessee, its agents, successors or assigns, shall not interfere with nor hinder the reasonable surface use by the Department of Natural Resources, its Offices or Commissions, as herein above reserved.

Applicant: Mouton Land Services

Bidder	Cash Payment	Price/Acre	Rental	Oil	Gas	Other



CAMERON PARISH



BLOCK WC0001

WEST CAMERON AREA, REVISED

BLOCK WC0030

BLOCK WC0031

SL 18097

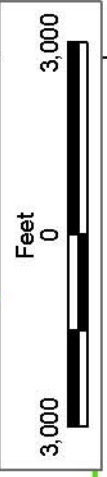
SL 16425

SL 12848

SL 12725

SL 18447

P.O.B.
X=1,425,600.00
Y=393,790.24



TRACT 37396 - Portion of Blocks 31, and 32, West Cameron Area, Revised, Cameron Parish, Louisiana

The beds and bottoms of all water bodies belonging to the State of Louisiana located in Blocks 31, and 32, West Cameron Area, Revised, together with any present lands formed by accretion to the shoreline or islands formed therein, located in Cameron Parish, Louisiana, owned by and not presently under mineral lease as of June 8, 2005, from the State of Louisiana, the geographical area of which is more fully described as follows: Beginning at the Northeast corner of State Lease No. 18447, said corner also being within Block 31, West Cameron Area, Revised, having Coordinates of X = 1,445,480.00 and Y = 389,188.00; thence West 2,243.81 feet along the North line of said State Lease No. 18447 to a point having Coordinates of X = 1,443,236.19 and Y = 389,188.00; thence North 4,602.24 feet to an interior corner of Block 31, having Coordinates of X = 1,443,236.19 and Y = 393,790.24; thence North 3,698.32 feet along the West line of said Block 31 to its Northwest corner, said corner also being a point on the Coastline as per the Supreme Court Decree dated June 16, 1975, having Coordinates of X = 1,443,236.19 and Y = 397,488.56; thence along said Coastline the following courses: Southeasterly on a straight line to a point having Coordinates of X = 1,444,715 and Y = 396,930; Southeasterly on a straight line to the Northeast corner of said Block 31, said corner also being the Northwest corner of Block 32, West Cameron Area, Revised, having Coordinates of X = 1,449,191.95 and Y = 395,017.43; Southeasterly on a straight line to a point having Coordinates of X = 1,449,935 and Y = 394,700; and Southeasterly on a straight line to a point having Coordinates of X = 1,454,105.00 and Y = 393,050.00; thence South 3,862.00 feet to a point having Coordinates of X = 1,454,105.00 and Y = 389,188.00; thence West 4,913.05 feet to a point on the common boundary line between said Block 31 and said Block 32 having Coordinates of X = 1,449,191.95 and Y = 389,188.00; thence West 3,711.95 feet to the point of beginning, containing **1,515.14 acres**, all as more particularly outlined on a plat on file in the Office of Mineral Resources, Department of Natural Resources. All bearings, distances and coordinates are based on Louisiana Coordinate System of 1927, (North or South Zone).

NOTE: The above description of the Tract nominated for lease has been provided and corrected, where required, exclusively by the nomination party. Any mineral lease selected from this Tract and awarded by the Louisiana State Mineral Board shall be without warranty of any kind, either express, implied, or statutory, including, but not limited to, the implied warranties of merchantability and fitness for a particular purpose. Should the mineral lease awarded by the Louisiana State Mineral Board be subsequently modified, cancelled or abrogated due to the existence of conflicting leases, operating agreements, private claims or other future obligations or conditions which may affect all or any portion of the leased Tract, it shall not relieve the Lessee of the obligation to pay any bonus due thereon to the Louisiana State Mineral Board, nor shall the Louisiana State Mineral Board be obligated to refund any consideration

paid by the Lessor prior to such modification, cancellation, or abrogation, including, but not limited to, bonuses, rentals and royalties.

NOTE: The State of Louisiana does hereby reserve, and this lease shall be subject to, the imprescriptible right of surface use in the nature of a servitude in favor of the Department of Natural Resources, including its Offices and Commissions, for the sole purpose of implementing, constructing, servicing and maintaining approved coastal zone management and/or restoration projects. Utilization of any and all rights derived under this lease by the mineral lessee, its agents, successors or assigns, shall not interfere with nor hinder the reasonable surface use by the Department of Natural Resources, its Offices or Commissions, as herein above reserved.

Applicant: Mouton Land Services

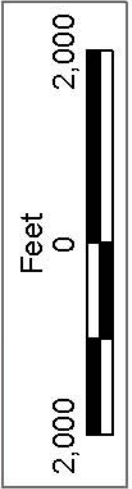
Bidder	Cash Payment	Price/Acre	Rental	Oil	Gas	Other



CAMERON PARISH

BLOCK WC0032

WEST CAMERON AREA, REVISED



P.O.B.
X=1,445,480.00
Y=389,188.00

SL 18447

BLOCK WC0031

BLOCK WC0001

SL 16097

SL 16425

SL 12848

SL 12725

TRACT 37397 - Portion of Block 29, West Cameron Area, Revised, Cameron Parish, Louisiana

The beds and bottoms of all water bodies belonging to the State of Louisiana located in Block 29, West Cameron Area, Revised, together with any present lands formed by accretion to the shoreline or islands formed therein, located in Cameron Parish, Louisiana, owned by and not presently under mineral lease as of June 8, 2005, from the State of Louisiana, the geographical area of which is more fully described as follows: Beginning at the Northeast corner of Block 29, West Cameron Area, Revised, having Coordinates of X = 1,420,967.81 and Y = 393,790.24; thence South 8,823.43 feet along the East line of said Block 29 to a point on the Three Mile Decree derived from the June 16, 1975 United States vs. Louisiana No. 9 Original, having Coordinates of X = 1,420,966.81 and Y = 384,967.31; thence along said Three Mile Decree the following courses: Northwesterly along an arc having a radius of 18,240.60 feet whose center is X = 1,425,600 and Y = 402,610 to a point having Coordinates of X = 1,417,428 and Y = 386,302, Northwesterly on a straight line to a point having Coordinates of X = 1,411,695 and Y = 388,054, Northwesterly on a straight line to a point having Coordinates of X = 1,406,675 and Y = 389,181, and Northwesterly on a straight line to a point on the West line of said Block 29 having Coordinates of X = 1,406,209.76 and Y = 389,258.53; thence North 4,531.71 feet along the West line of said Block 29 to its Northwest corner having Coordinates of X = 1,406,209.76 and Y = 393,790.24; thence East 14,758.05 feet along the North line of said Block 29 to the point of beginning, containing **2,183.65 acres, LESS AND EXCEPT** that portion thereof, if any, lying seaward of the line three nautical miles from the coast line of Louisiana, as said three mile line has been decreed by the Supreme Court of the United States, as determined by a Special Master appointed therein, in litigation styled **United States v. State of Louisiana et al No. 9 Original**, in 1975, all as more particularly outlined on a plat in the Office of Mineral Resources, Department of Natural Resources. All bearings, distances and coordinates are based on the Louisiana Coordinate System of 1927, (South Zone).

NOTE: The above description of the Tract nominated for lease has been provided and corrected, where required, exclusively by the nomination party. Any mineral lease selected from this Tract and awarded by the Louisiana State Mineral Board shall be without warranty of any kind, either express, implied, or statutory, including, but not limited to, the implied warranties of merchantability and fitness for a particular purpose. Should the mineral lease awarded by the Louisiana State Mineral Board be subsequently modified, cancelled or abrogated due to the existence of conflicting leases, operating agreements, private claims or other future obligations or conditions which may affect all or any portion of the leased Tract, it shall not relieve the Lessee of the obligation to pay any bonus due thereon to the Louisiana State Mineral Board, nor shall the Louisiana State Mineral Board be obligated to refund any consideration paid by the Lessor prior to such modification, cancellation, or abrogation, including, but not limited to, bonuses, rentals and royalties.

NOTE: The State of Louisiana does hereby reserve, and this lease shall be subject to, the imprescriptible right of surface use in the nature of a servitude in favor of the Department of Natural Resources, including its Offices and Commissions, for the sole purpose of implementing, constructing, servicing and maintaining approved coastal zone management and/or restoration projects. Utilization of any and all rights derived under this lease by the mineral lessee, its agents, successors or assigns, shall not interfere with nor hinder the reasonable surface use by the Department of Natural Resources, its Offices or Commissions, as herein above reserved.

Applicant: Mouton Land Services

Bidder	Cash Payment	Price/Acre	Rental	Oil	Gas	Other



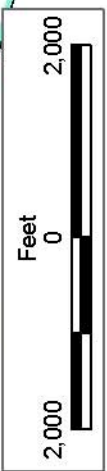
BLOCK
WC0001

BLOCK
WC0030

LA

P.O.B
X=1,420,967.81
Y=883,780.24

US



CAMERON PARISH

BLOCK WC0002

WEST CAMERON AREA, REVISED

BLOCK WC0029

SL 18425

SL 18424

BLOCK
WC0003

BLOCK
WC0028

TRACT 37398 - Portion of Block 30, West Cameron Area, Revised, Cameron Parish, Louisiana

The beds and bottoms of all water bodies belonging to the State of Louisiana located in Block 30, West Cameron Area, Revised, together with any present lands formed by accretion to the shoreline or islands formed therein, located in Cameron Parish, Louisiana, owned by and not presently under mineral lease as of June 8, 2005, from the State of Louisiana, the geographical area of which is more fully described as follows: Beginning at the Northwest corner of Block 30, West Cameron Area, Revised, having Coordinates of X = 1,420,967.81 and Y = 393,790.24; thence East 9,758.05 feet along the North line of said Block 30 to a point having Coordinates of X = 1,430,725.86 and Y = 393,790.24; thence South 7,758.05 feet to a point on the North line of State Lease No. 18027 having Coordinates of X = 1,430,725.86 and Y = 386,032.19; thence along the boundary of said State Lease No. 18027 the following courses: West 4,000.00 feet and South 2,906.88 feet to a point on the Three Mile Decree derived from the June 16, 1975 United States vs. Louisiana No. 9 Original, having Coordinates of X = 1,426,725.86 and Y = 383,125.31; thence along said Three Mile Decree the following courses: Northwesterly along an arc having a radius of 18,240.60 feet whose center is X = 1,431,465 and Y = 400,740 to a point having Coordinates of X = 1,426,148 and Y = 383,291; Northwesterly on a straight line to a point having Coordinates of X = 1,423,703 and Y = 384,036, Northwesterly along an arc having a radius of 18,240.60 feet whose center is X = 1,429,020 and Y = 401,485 to a point having Coordinates of X = 1,421,665 and Y = 384,793; Northwesterly on a straight line to a point having Coordinates of X = 1,421,218 and Y = 384,903; Northwesterly along an arc having a radius of 18,240.60 feet whose center is X = 1,425,600 and Y = 402,610 to a point on the West line of said Block 30 having Coordinates of X = 1,420,967.81 and Y = 384,967.81; thence North 8,822.43 feet along the West line of said Block 30 to the point of beginning, containing **2,003.57 acres, LESS AND EXCEPT** that portion thereof, if any, lying seaward of the line three nautical miles from the coast line of Louisiana, as said three mile line has been decreed by the Supreme Court of the United States, as determined by a Special Master appointed therein, in litigation styled **United States v. State of Louisiana et al No. 9 Original**, in 1975, all as more particularly outlined on a plat in the Office of Mineral Resources, Department of Natural Resources. All bearings, distances and coordinates are based on the Louisiana Coordinate System of 1927, (South Zone).

NOTE: The above description of the Tract nominated for lease has been provided and corrected, where required, exclusively by the nomination party. Any mineral lease selected from this Tract and awarded by the Louisiana State Mineral Board shall be without warranty of any kind, either express, implied, or statutory, including, but not limited to, the implied warranties of merchantability and fitness for a particular purpose. Should the mineral lease awarded by the Louisiana State Mineral Board be subsequently modified, cancelled or abrogated due to the existence of conflicting leases, operating agreements, private claims or

other future obligations or conditions which may affect all or any portion of the leased Tract, it shall not relieve the Lessee of the obligation to pay any bonus due thereon to the Louisiana State Mineral Board, nor shall the Louisiana State Mineral Board be obligated to refund any consideration paid by the Lessor prior to such modification, cancellation, or abrogation, including, but not limited to, bonuses, rentals and royalties.

NOTE: The State of Louisiana does hereby reserve, and this lease shall be subject to, the imprescriptible right of surface use in the nature of a servitude in favor of the Department of Natural Resources, including its Offices and Commissions, for the sole purpose of implementing, constructing, servicing and maintaining approved coastal zone management and/or restoration projects. Utilization of any and all rights derived under this lease by the mineral lessee, its agents, successors or assigns, shall not interfere with nor hinder the reasonable surface use by the Department of Natural Resources, its Offices or Commissions, as herein above reserved.

Applicant: Mouton Land Services

Bidder	Cash Payment	Price/Acre	Rental	Oil	Gas	Other



CAMERON PARISH

WEST CAMERON AREA, REVISED

P.O.B.
X=1,420,967.81
Y=393,790.24

BLOCK WC0002

BLOCK WC0001

BLOCK WC0029

BLOCK WC0030

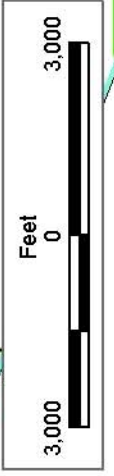
BLOCK WC0031

LA

US

SL 18027

SL 18236



TRACT 37399 - Portion of Blocks 30, and 31, West Cameron Area, Revised, Cameron Parish, Louisiana

The beds and bottoms of all water bodies belonging to the State of Louisiana located in Blocks 30, and 31, West Cameron Area, Revised, together with any present lands formed by accretion to the shoreline or islands formed therein, located in Cameron Parish, Louisiana, owned by and not presently under mineral lease as of June 8, 2005, from the State of Louisiana, the geographical area of which is more fully described as follows: Beginning at an interior corner of Block 31, having Coordinates of X = 1,443,236.19 and Y = 393,790.24; thence South 4,602.24 feet to a point on the North line of State Lease No. 18447 having Coordinates of X = 1,443,236.19 and Y = 389,188.00; thence West 2,912.19 feet along the North line of said State Lease No. 18447 to its Northwest corner having Coordinates of X = 1,440,324.00 and Y = 389,188.00; thence South 3,370.81 feet along the West line of said State Lease No. 18447 to its Southwest corner, said corner also being a point on the North line of State Lease No. 18236, having Coordinates of X = 1,440,324.00 and Y = 385,817.19; thence West 4,598.14 feet along the North line of said State Lease No. 18236 to its Northwest corner, said corner also being a point on the East line of State Lease No. 18027 and a point on the West line of Block 31, West Cameron Area, Revised, having Coordinates of X = 1,435,725.86 and Y = 385,817.19; thence North 215.00 feet along the East line of said State Lease No. 18027 to its Northeast corner having Coordinates of X = 1,435,725.86 and Y = 386,032.19; thence West 5,000.00 feet along the North line of said State Lease No. 18027 to a point having Coordinates of X = 1,430,725.86 and Y = 386,032.19; thence North 7,758.05 feet to a point on the North line of said Block 30 having Coordinates of X = 1,430,725.86 and Y = 393,790.24; thence East 5,000.00 feet along the North line of said Block 30 to the Northeast corner of Block 30, West Cameron Area, Revised, said corner also being the Northwest corner of said Block 31, having Coordinates of X = 1,435,725.86 and Y = 393,790.24; thence East 7,510.34 feet along the North line of said Block 31 to the point of beginning, containing **2,039.81 acres**, all as more particularly outlined on a plat on file in the Office of Mineral Resources, Department of Natural Resources. All bearings, distances and coordinates are based on Louisiana Coordinate System of 1927, (North or South Zone).

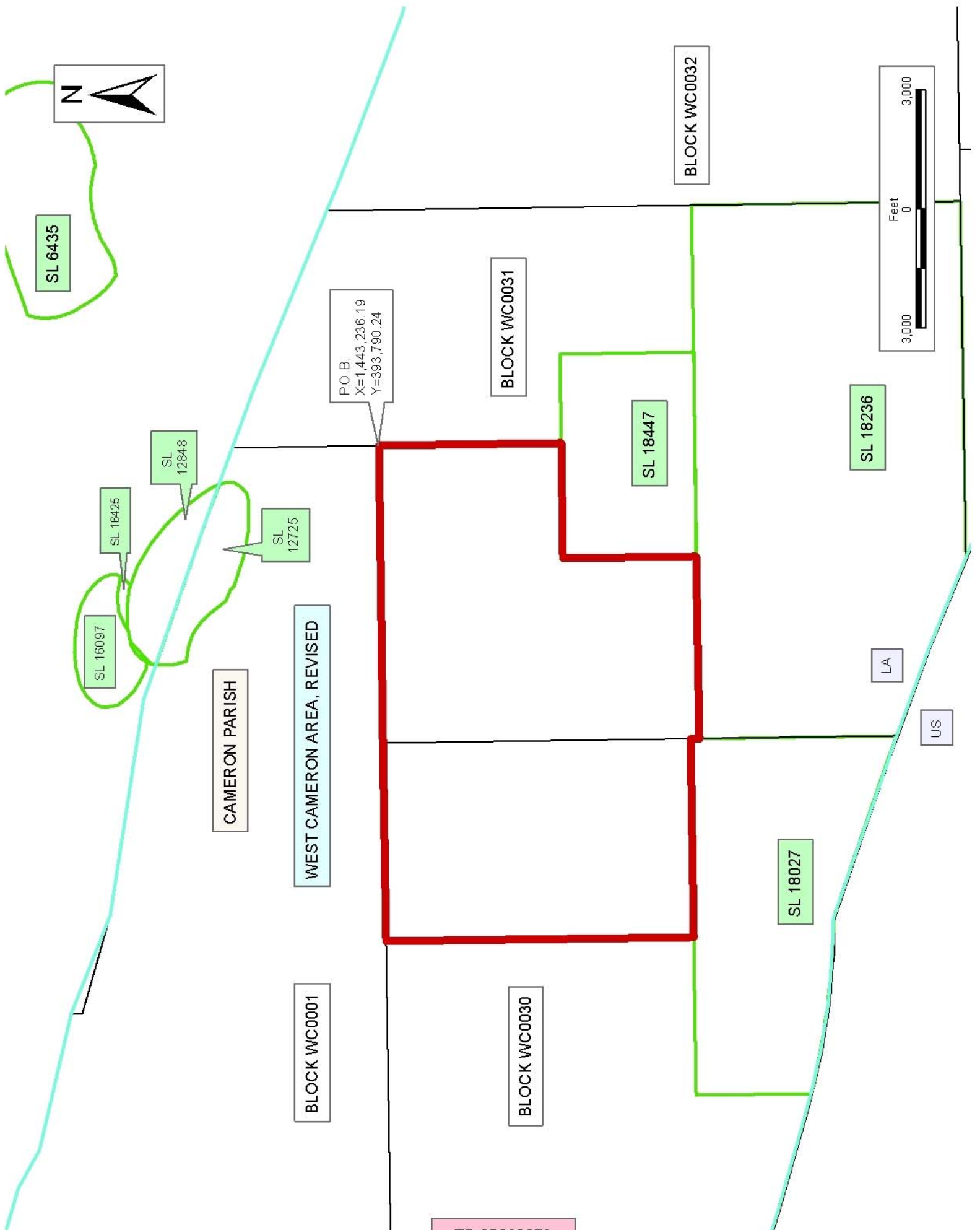
NOTE: The above description of the Tract nominated for lease has been provided and corrected, where required, exclusively by the nomination party. Any mineral lease selected from this Tract and awarded by the Louisiana State Mineral Board shall be without warranty of any kind, either express, implied, or statutory, including, but not limited to, the implied warranties of merchantability and fitness for a particular purpose. Should the mineral lease awarded by the Louisiana State Mineral Board be subsequently modified, cancelled or abrogated due to the existence of conflicting leases, operating agreements, private claims or other future obligations or conditions which may affect all or any portion of the leased Tract, it shall not relieve the Lessee of the obligation to pay any bonus due thereon to the Louisiana State Mineral Board, nor shall

the Louisiana State Mineral Board be obligated to refund any consideration paid by the Lessor prior to such modification, cancellation, or abrogation, including, but not limited to, bonuses, rentals and royalties.

NOTE: The State of Louisiana does hereby reserve, and this lease shall be subject to, the imprescriptible right of surface use in the nature of a servitude in favor of the Department of Natural Resources, including its Offices and Commissions, for the sole purpose of implementing, constructing, servicing and maintaining approved coastal zone management and/or restoration projects. Utilization of any and all rights derived under this lease by the mineral lessee, its agents, successors or assigns, shall not interfere with nor hinder the reasonable surface use by the Department of Natural Resources, its Offices or Commissions, as herein above reserved.

Applicant: Mouton Land Services

Bidder	Cash Payment	Price/Acre	Rental	Oil	Gas	Other



P.O.B.
X=1,443,236.19
Y=393,790.24

TRACT 37400 - Portion of Block 1, East Cameron Area, Revised, Cameron Parish, Louisiana

The beds and bottoms of all water bodies belonging to the State of Louisiana located in Block 1, East Cameron Area, Revised, together with any present lands formed by accretion to the shoreline or islands formed therein, located in Cameron Parish, Louisiana, owned by and not presently under mineral lease as of June 8, 2005, from the State of Louisiana, the geographical area of which is more fully described as follows: Beginning at the Northwest corner of Block 1, East Cameron Area, Revised, said corner also being a point on the Coastline as per the Supreme Court Decree dated June 16, 1975, having Coordinates of X = 1,465,241.95 and Y = 389,642.21; thence along said Coastline the following courses: Southeasterly on a straight line to a point having Coordinates of X = 1,467,685 and Y = 388,820 and Southeasterly on a straight line to the most Northerly Northwest corner of State Lease No. 1170, as amended, having Coordinates of X = 1,470,502.77 and Y = 387,686.55; thence along the boundary of said State Lease No. 1170, as amended, the following courses: South 28 degrees 00 minutes 00 seconds West 1,551.27 feet to a point having Coordinates of X = 1,469,774.49 and Y = 386,316.86; South 17 degrees 18 minutes 00 seconds West 3,163.97 feet to a point having Coordinates of X = 1,468,833.61 and Y = 383,296.02; South 41 degrees 48 minutes 27 seconds West 1,088.26 feet to a point having Coordinates of X = 1,468,108.14 and Y = 382,484.84; South 28 degrees 42 minutes 39 seconds West 1,578.41 feet to a point having Coordinates of X = 1,467,349.89 and Y = 381,100.49; and South 45 degrees 32 minutes 38 seconds West 2,953.18 feet to a point on the West line of said Block 1 having Coordinates of X = 1,465,241.95 and Y = 379,032.19; thence North 10,610.02 feet along the West line of said Block 1 to the point of beginning, **LESS AND EXCEPT** any portion of State Lease No. 1170 that may lie within the above described tract, containing **748.17 acres**, all as more particularly outlined on a plat on file in the Office of Mineral Resources, Department of Natural Resources. All bearings, distances and coordinates are based on Louisiana Coordinate System of 1927, (North or South Zone).

NOTE: The above description of the Tract nominated for lease has been provided and corrected, where required, exclusively by the nomination party. Any mineral lease selected from this Tract and awarded by the Louisiana State Mineral Board shall be without warranty of any kind, either express, implied, or statutory, including, but not limited to, the implied warranties of merchantability and fitness for a particular purpose. Should the mineral lease awarded by the Louisiana State Mineral Board be subsequently modified, cancelled or abrogated due to the existence of conflicting leases, operating agreements, private claims or other future obligations or conditions which may affect all or any portion of the leased Tract, it shall not relieve the Lessee of the obligation to pay any bonus due thereon to the Louisiana State Mineral Board, nor shall the Louisiana State Mineral Board be obligated to refund any consideration paid by the Lessor prior to such modification, cancellation, or abrogation, including, but not limited to, bonuses, rentals and royalties.

NOTE: The State of Louisiana does hereby reserve, and this lease shall be subject to, the imprescriptible right of surface use in the nature of a servitude in favor of the Department of Natural Resources, including its Offices and Commissions, for the sole purpose of implementing, constructing, servicing and maintaining approved coastal zone management and/or restoration projects. Utilization of any and all rights derived under this lease by the mineral lessee, its agents, successors or assigns, shall not interfere with nor hinder the reasonable surface use by the Department of Natural Resources, its Offices or Commissions, as herein above reserved.

Applicant: Juanita C. Chatelain

Bidder	Cash Payment	Price/Acre	Rental	Oil	Gas	Other



CAMERON PARISH

P.O.B.
X=1,465,241.95
Y=389,642.21

WEST CAMERON AREA, REVISED

BLOCK WC0032

SL 18237

TR 05060090

SL 1170

BLOCK EC0001

EAST CAMERON AREA, REVISED

SL 16475

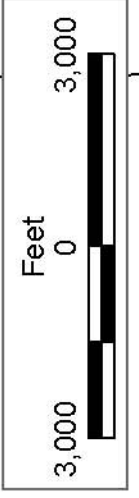
SL 18121

SL 16473

BLOCK WC0033

LA

US



TRACT 37401 - Portion of Blocks 31, 32 and 33, West Cameron Area, Revised, Cameron Parish, Louisiana

The beds and bottoms of all water bodies belonging to the State of Louisiana located in Blocks 31, 32 and 33, West Cameron Area, Revised, together with any present lands formed by accretion to the shoreline or islands formed therein, located in Cameron Parish, Louisiana, owned by and not presently under mineral lease as of June 8, 2005, from the State of Louisiana, the geographical area of which is more fully described as follows: Beginning at the Northeast corner of State Lease No. 18447, said corner also being within Block 31, West Cameron Area, Revised, having Coordinates of X = 1,445,480.00 and Y = 389,188.00; thence East 3,711.95 feet to a point on the common boundary line between said Block 31 and Block 32, West Cameron Area, Revised, having Coordinates of X = 1,449,191.95 and Y = 389,188.00; thence East 4,913.05 feet to a point having Coordinates of X = 1,454,105.00 and Y = 389,188.00; thence South 6,153.00 feet to a point on the North line of State Lease No. 18237 having Coordinates of X = 1,454,105.00 and Y = 383,035.00; thence along the boundary of said State Lease No. 18237 the following courses: West 3,299.00 feet to its Northwest corner having Coordinates of X = 1,450,806.00 and Y = 383,035.00; South 2,275.00 feet to its Southwest corner having Coordinates of X = 1,450,806.00 and Y = 380,760.00; and East 3,299.00 feet to a point having Coordinates of X = 1,454,105.00 and Y = 380,760.00; thence South 1,727.81 feet to a point on the South line of said Block 32, said point also being on the North line of Block 33, having Coordinates of X = 1,454,105.00 and Y = 379,032.19; thence South 4,938.37 feet to a point on the Three Mile Decree derived from the June 16, 1975 United States vs. Louisiana No. 9 Original, having Coordinates of X = 1,454,105.00 and Y = 374,093.82; thence Northwesterly along said Three Mile Decree to the Southeast corner of State Lease No. 18238, said corner also being a point on the common boundary line between said Block 33 and Block 34, West Cameron Area, Revised, having Coordinates of X = 1,450,483.90 and Y = 375,118.34; thence North 3,913.85 feet along the East line of said State Lease No. 18238 to its Northeast corner, said corner also being the Northeast corner of said Block 34, also being a point on the South line of Block 32, having Coordinates of X = 1,450,483.90 and Y = 379,032.19; thence West 1,291.95 feet along the North line of said State Lease No. 18238 to the Southeast corner of said Block 31, said corner also being the Southeast corner of State Lease No. 18236, having Coordinates of X = 1,449,191.95 and Y = 379,032.19; thence North 6,785.00 feet along the East line of said State Lease No. 18236 to its Northeast corner, said corner also being a point on the common boundary line between said Block 31 and said Block 32, having Coordinates of X = 1,449,191.95 and Y = 385,817.19; thence West 3,711.95 feet along the North line of said State Lease No. 18236 to the Southeast corner of said State Lease No. 18447 having Coordinates of X = 1,445,480.00 and Y = 385,817.19; thence North 3,370.81 feet along the East line of said State Lease No. 18447 to the point of beginning, containing **1,628.34 acres, LESS AND EXCEPT** that portion thereof, if any, lying seaward of the line three nautical miles from the coast line of Louisiana, as said three mile line has been decreed

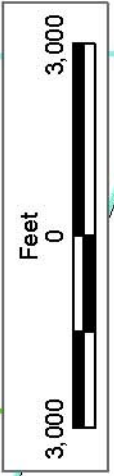
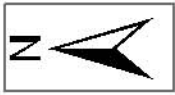
by the Supreme Court of the United States, as determined by a Special Master appointed therein, in litigation styled **United States v. State of Louisiana et al No. 9 Original**, in 1975, all as more particularly outlined on a plat in the Office of Mineral Resources, Department of Natural Resources. All bearings, distances and coordinates are based on the Louisiana Coordinate System of 1927, (South Zone).

NOTE: The above description of the Tract nominated for lease has been provided and corrected, where required, exclusively by the nomination party. Any mineral lease selected from this Tract and awarded by the Louisiana State Mineral Board shall be without warranty of any kind, either express, implied, or statutory, including, but not limited to, the implied warranties of merchantability and fitness for a particular purpose. Should the mineral lease awarded by the Louisiana State Mineral Board be subsequently modified, cancelled or abrogated due to the existence of conflicting leases, operating agreements, private claims or other future obligations or conditions which may affect all or any portion of the leased Tract, it shall not relieve the Lessee of the obligation to pay any bonus due thereon to the Louisiana State Mineral Board, nor shall the Louisiana State Mineral Board be obligated to refund any consideration paid by the Lessor prior to such modification, cancellation, or abrogation, including, but not limited to, bonuses, rentals and royalties.

NOTE: The State of Louisiana does hereby reserve, and this lease shall be subject to, the imprescriptible right of surface use in the nature of a servitude in favor of the Department of Natural Resources, including its Offices and Commissions, for the sole purpose of implementing, constructing, servicing and maintaining approved coastal zone management and/or restoration projects. Utilization of any and all rights derived under this lease by the mineral lessee, its agents, successors or assigns, shall not interfere with nor hinder the reasonable surface use by the Department of Natural Resources, its Offices or Commissions, as herein above reserved.

Applicant: Mouton Land Services

Bidder	Cash Payment	Price/Acre	Rental	Oil	Gas	Other



CAMERON PARISH

BLOCK WC0032

WEST CAMERON AREA, REVISED

BLOCK WC0033

P.O. B.
X=1,445,480.00
Y=389,188.00

SL 18447

BLOCK WC0031

BLOCK WC0034

SL 18238

LA

US

SL 18237

SL 16473

SL 18236

TRACT 37402 - Portion of Blocks 1, and 3, East Cameron Area, Revised, Cameron Parish, Louisiana

The beds and bottoms of all water bodies belonging to the State of Louisiana located in Blocks 1, and 3, East Cameron Area, Revised, together with any present lands formed by accretion to the shoreline or islands formed therein, located in Cameron Parish, Louisiana, owned by and not presently under mineral lease as of June 8, 2005, from the State of Louisiana, the geographical area of which is more fully described as follows: Beginning at a point on the East line of Block 3, East Cameron Area, Revised, having Coordinates of X = 1,493,033.33 and Y = 369,300.00; thence West 11,833.33 feet to a point having Coordinates of X = 1,481,200.00 and Y = 369,300.00; thence North 5,458.05 feet to a point on the South line of State Lease No. 1170, as amended, having Coordinates of X = 1,481,200.00 and Y = 374,758.05; thence along the boundary of said State Lease No. 1170, as amended, the following courses: East 2,164.65 feet to a point having Coordinates of X = 1,483,364.65 and Y = 374,758.05; North 33 degrees 11 minutes 15 seconds East 901.66 feet to a point having Coordinates of X = 1,483,858.20 and Y = 375,512.63; North 26 degrees 10 minutes 30 seconds East 1,007.15 feet to a point having Coordinates of X = 1,484,302.47 and Y = 376,416.50; North 17 degrees 54 minutes 22 seconds East 1,283.10 feet to a point having Coordinates of X = 1,484,696.97 and Y = 377,637.45; North 2,058.78 feet to a point having Coordinates of X = 1,484,696.97 and Y = 379,696.23; West 452.17 feet to a point having Coordinates of X = 1,484,244.80 and Y = 379,696.23; North 2,261.72 feet to its most Northerly Northeast corner, said corner also being a point on the Coastline as per the Supreme Court Decree dated June 16, 1975, having Coordinates of X = 1,484,244.80 and Y = 381,957.95; thence along said Coastline the following courses: Southeasterly on a straight to the Northeast corner of Block 1, East Cameron Area, Revised, said corner also being the most Northerly Northwest corner of said Block 3, having Coordinates of X = 1,486,955.29 and Y = 380,677.96; Southeasterly on a straight line to a point having Coordinates of X = 1,489,725 and Y = 379,370; Southeasterly on a straight line to a point having Coordinates of X = 1,492,040 and Y = 378,110; and Southeasterly on a straight line to the Northeast corner of said Block 3 having Coordinates of X = 1,493,033.33 and Y = 377,611.20; thence South 8,311.20 feet along the East line of said Block 3 to the point of beginning, containing **2,493.96 acres**, all as more particularly outlined on a plat on file in the Office of Mineral Resources, Department of Natural Resources. All bearings, distances and coordinates are based on Louisiana Coordinate System of 1927, (North or South Zone).

NOTE: The above description of the Tract nominated for lease has been provided and corrected, where required, exclusively by the nomination party. Any mineral lease selected from this Tract and awarded by the Louisiana State Mineral Board shall be without warranty of any kind, either express, implied, or statutory, including, but not limited to, the implied warranties of merchantability and fitness for a particular purpose. Should the mineral lease awarded by the Louisiana State Mineral

Board be subsequently modified, cancelled or abrogated due to the existence of conflicting leases, operating agreements, private claims or other future obligations or conditions which may affect all or any portion of the leased Tract, it shall not relieve the Lessee of the obligation to pay any bonus due thereon to the Louisiana State Mineral Board, nor shall the Louisiana State Mineral Board be obligated to refund any consideration paid by the Lessor prior to such modification, cancellation, or abrogation, including, but not limited to, bonuses, rentals and royalties.

NOTE: The State of Louisiana does hereby reserve, and this lease shall be subject to, the imprescriptible right of surface use in the nature of a servitude in favor of the Department of Natural Resources, including its Offices and Commissions, for the sole purpose of implementing, constructing, servicing and maintaining approved coastal zone management and/or restoration projects. Utilization of any and all rights derived under this lease by the mineral lessee, its agents, successors or assigns, shall not interfere with nor hinder the reasonable surface use by the Department of Natural Resources, its Offices or Commissions, as herein above reserved.

Applicant: Juanita C. Chatelain

Bidder	Cash Payment	Price/Acre	Rental	Oil	Gas	Other



CAMERON PARISH

EAST CAMERON AREA, REVISED

SL 1170

BLOCK EC0001

BLOCK EC0003

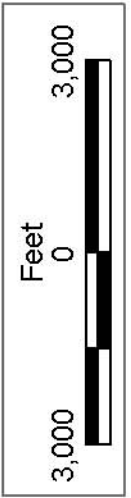
BLOCK EC0004

BLOCK EC0002

P.O.B.
X=1,493,033.33
Y=369,300.00

LA

US



TRACT 37403 - Portion of Block 4, East Cameron Area, Revised, Cameron Parish, Louisiana

The beds and bottoms of all water bodies belonging to the State of Louisiana located in Block 4, East Cameron Area, Revised, together with any present lands formed by accretion to the shoreline or islands formed therein, located in Cameron Parish, Louisiana, owned by and not presently under mineral lease as of June 8, 2005, from the State of Louisiana, the geographical area of which is more fully described as follows: Beginning at a point on the North line of Block 4, East Cameron Area, Revised, said point also being on the Coastline as per the Supreme Court Decree dated June 16, 1975, having Coordinates of X = 1,501,800.00 and Y = 372,990.19; thence South 5,790.19 feet to a point on the North line of State Lease No. 17742 having Coordinates of X = 1,501,800.00 and Y = 367,200.00; thence along the boundary of said State Lease No. 17742 the following courses: West 2,800.00 feet to its Northwest corner having Coordinates of X = 1,499,000.00 and Y = 367,200.00; and South 4,000.00 feet to its Southwest corner, said corner also being the Northeast corner of State Lease No. 16980 and the Northwest corner of State Lease No. 17327, having Coordinates of X = 1,499,000.00 and Y = 363,200.00; thence West 3,633.00 feet along the North line of said State Lease No. 16980 to its Northwest corner having Coordinates of X = 1,495,367.00 and Y = 363,200.00; thence West 2,333.67 feet to a point on the common boundary line between Block 3 and said Block 4 having Coordinates of X = 1,493,033.33 and Y = 363,200.00; thence North 14,411.20 feet along the common boundary line between said Block 3 and said Block 4 to the Northwest corner of said Block 4, said corner also being a point on said Coastline, having Coordinates of X = 1,493,033.33 and Y = 377,611.20; thence along said Coastline the following courses: South 63 degrees 20 minutes 12 seconds East 4,102.98 feet to a point having Coordinates of X = 1,496,700 and Y = 375,770, and South 61 degrees 24 minutes 25 seconds East 5,808.39 feet to the point of beginning, containing **2,187.42 acres**, all as more particularly outlined on a plat on file in the Office of Mineral Resources, Department of Natural Resources. All bearings, distances and coordinates are based on Louisiana Coordinate System of 1927, (North or South Zone).

NOTE: The above description of the Tract nominated for lease has been provided and corrected, where required, exclusively by the nomination party. Any mineral lease selected from this Tract and awarded by the Louisiana State Mineral Board shall be without warranty of any kind, either express, implied, or statutory, including, but not limited to, the implied warranties of merchantability and fitness for a particular purpose. Should the mineral lease awarded by the Louisiana State Mineral Board be subsequently modified, cancelled or abrogated due to the existence of conflicting leases, operating agreements, private claims or other future obligations or conditions which may affect all or any portion of the leased Tract, it shall not relieve the Lessee of the obligation to pay any bonus due thereon to the Louisiana State Mineral Board, nor shall the Louisiana State Mineral Board be obligated to refund any consideration

paid by the Lessor prior to such modification, cancellation, or abrogation, including, but not limited to, bonuses, rentals and royalties.

NOTE: The State of Louisiana does hereby reserve, and this lease shall be subject to, the imprescriptible right of surface use in the nature of a servitude in favor of the Department of Natural Resources, including its Offices and Commissions, for the sole purpose of implementing, constructing, servicing and maintaining approved coastal zone management and/or restoration projects. Utilization of any and all rights derived under this lease by the mineral lessee, its agents, successors or assigns, shall not interfere with nor hinder the reasonable surface use by the Department of Natural Resources, its Offices or Commissions, as herein above reserved.

Applicant: Juanita C. Chatelain

Bidder	Cash Payment	Price/Acre	Rental	Oil	Gas	Other



CAMERON PARISH

P.O.B.
X=1,501,800.00
Y=372,990.19

