

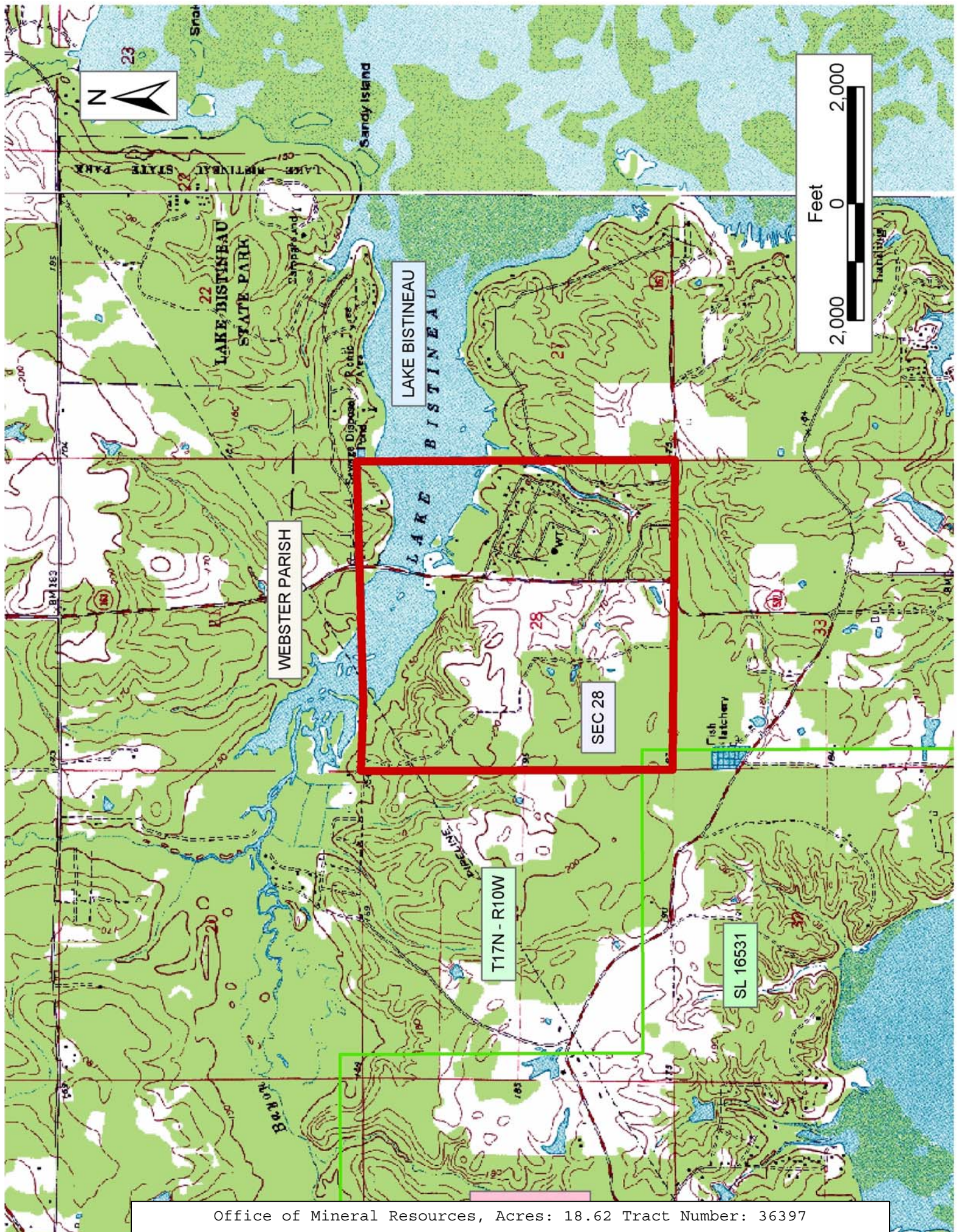
TRACT 36397 - Webster Parish, Louisiana

A certain Tract of land, excluding the beds and bottoms of all navigable waters, belonging to and not presently under mineral lease from Webster Parish Police Jury on June 9, 2004, being more fully described as follows: All of the land under the roads and otherwise owned by the Webster Parish Police Jury in Section 28, T17N R10W, Webster Parish, La. containing approximately **18.62 acres**, all as more particularly outlined on a plat on file in the Office of Mineral Resources, Department of Natural Resources. The description is based on information provided by the State Agency regarding location and ownership of surface and mineral rights. All distances, bearing and coordinates, if applicable, are based on the Louisiana Coordinate System of 1927, (North or South Zone).

NOTE: The above description of the Tract nominated for lease has been provided and corrected, where required, exclusively by the nomination party. Any mineral lease selected from this Tract and awarded by the Louisiana State Mineral Board shall be without warranty of any kind, either express, implied, or statutory, including, but not limited to, the implied warranties of merchantability and fitness for a particular purpose. Should the mineral lease awarded by the Louisiana State Mineral Board be subsequently modified, cancelled or abrogated due to the existence of conflicting leases, operating agreements, private claims or other future obligations or conditions which may affect all or any portion of the leased Tract, it shall not relieve the Lessee of the obligation to pay any bonus due thereon to the Louisiana State Mineral Board, nor shall the Louisiana State Mineral Board be obligated to refund any consideration paid by the Lessor prior to such modification, cancellation, or abrogation, including, but not limited to, bonuses, rentals and royalties.

Applicant: Clark Energy Company, Inc. to Agency and by Resolution from the Webster Parish Police Jury authorizing the Mineral Board to act in its behalf

Bidder	Cash Payment	Price/Acre	Rental	Oil	Gas	Other



TRACT 36398 - Acadia Parish, Louisiana

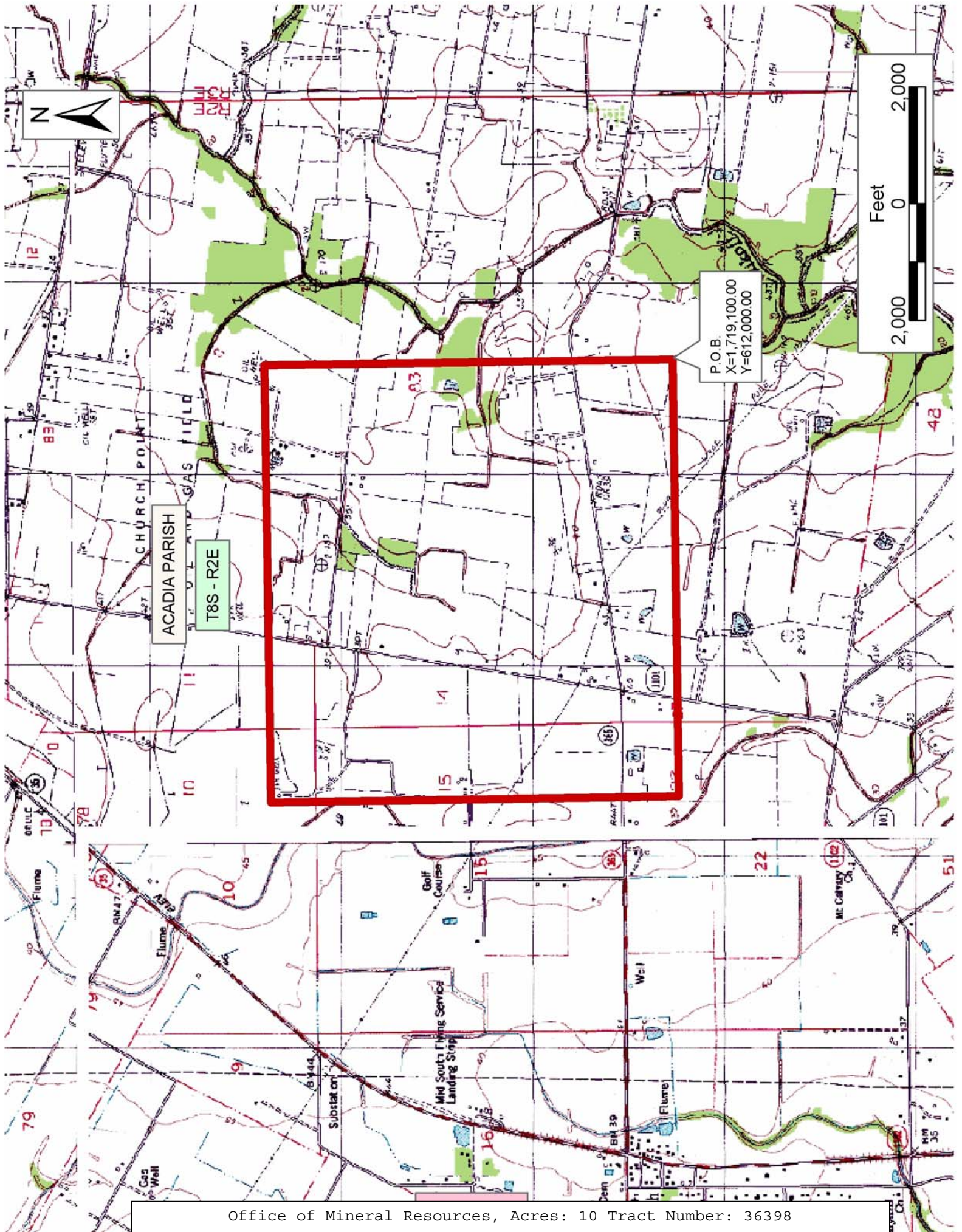
A certain Tract of land, excluding the beds and bottoms of all navigable waters, belonging to and not presently under mineral lease from Louisiana Department Of Transportation And Development on June 9, 2004, identified as being all that portion of Louisiana Highway Nos. 365 and 1011 being more fully described as follows: Beginning at a point having Coordinates of X = 1,719,100.00 and Y = 612,000.00; thence West 7,500.00 feet to a point having Coordinates of X = 1,711,600.00 and Y = 612,000.00; thence North 7,000.00 feet to a point having Coordinates of X = 1,711,600.00 and Y = 619,000.00; thence East 7,500.00 feet to a point having Coordinates of X = 1,719,100.00 and Y = 619,000.00; thence South 7,000.00 feet to the point of beginning, containing approximately **10 acres**, all as more particularly outlined on a plat on file in the Office of Mineral Resources, Department of Natural Resources. The description is based on information provided by the State Agency regarding location and ownership of surface and mineral rights. All distances, bearing and coordinates, if applicable, are based on the Louisiana Coordinate System of 1927, (North or South Zone).

NOTE: The above description of the Tract nominated for lease has been provided and corrected, where required, exclusively by the nomination party. Any mineral lease selected from this Tract and awarded by the Louisiana State Mineral Board shall be without warranty of any kind, either express, implied, or statutory, including, but not limited to, the implied warranties of merchantability and fitness for a particular purpose. Should the mineral lease awarded by the Louisiana State Mineral Board be subsequently modified, cancelled or abrogated due to the existence of conflicting leases, operating agreements, private claims or other future obligations or conditions which may affect all or any portion of the leased Tract, it shall not relieve the Lessee of the obligation to pay any bonus due thereon to the Louisiana State Mineral Board, nor shall the Louisiana State Mineral Board be obligated to refund any consideration paid by the Lessor prior to such modification, cancellation, or abrogation, including, but not limited to, bonuses, rentals and royalties.

Applicant: L & L Exploration to Agency and by Resolution from the Louisiana Department Of Transportation And Development authorizing the

Bidder	Cash Payment	Price/Acre	Rental	Oil	Gas	Other

Mineral Board to act in its behalf



Office of Mineral Resources, Acres: 10 Tract Number: 36398

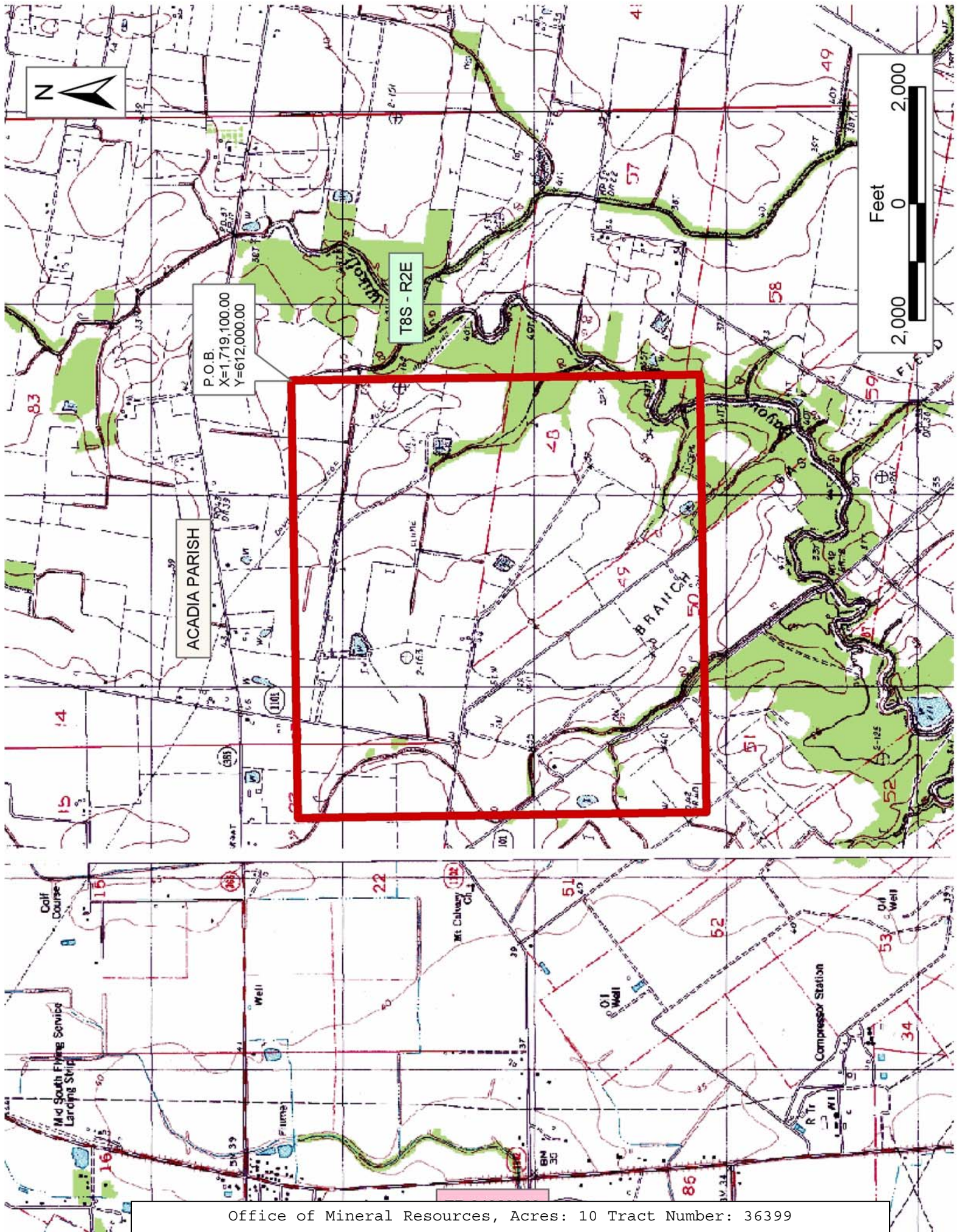
TRACT 36399 - Acadia Parish, Louisiana

A certain Tract of land, excluding the beds and bottoms of all navigable waters, belonging to and not presently under mineral lease from Louisiana Department Of Transportation And Development on June 9, 2004, identified as being all that portion of Louisiana Highway Nos. 1011 being more fully described as follows: Beginning at a point having Coordinates of X = 1,719,100.00 and Y = 612,000.00; thence South 7,000.00 feet to a point having Coordinates of X = 1,719,100.00 and Y = 605,000.00; thence West 7,500.00 feet to a point having Coordinates of X = 1,711,600.00 and Y = 605,000.00; thence North 7,000.00 feet to a point having Coordinates of X = 1,711,600.00 and Y = 612,000.00; thence East 7,500.00 feet to the point of beginning, containing approximately **10 acres**, all as more particularly outlined on a plat on file in the Office of Mineral Resources, Department of Natural Resources. The description is based on information provided by the State Agency regarding location and ownership of surface and mineral rights. All distances, bearing and coordinates, if applicable, are based on the Louisiana Coordinate System of 1927, (North or South Zone).

NOTE: The above description of the Tract nominated for lease has been provided and corrected, where required, exclusively by the nomination party. Any mineral lease selected from this Tract and awarded by the Louisiana State Mineral Board shall be without warranty of any kind, either express, implied, or statutory, including, but not limited to, the implied warranties of merchantability and fitness for a particular purpose. Should the mineral lease awarded by the Louisiana State Mineral Board be subsequently modified, cancelled or abrogated due to the existence of conflicting leases, operating agreements, private claims or other future obligations or conditions which may affect all or any portion of the leased Tract, it shall not relieve the Lessee of the obligation to pay any bonus due thereon to the Louisiana State Mineral Board, nor shall the Louisiana State Mineral Board be obligated to refund any consideration paid by the Lessor prior to such modification, cancellation, or abrogation, including, but not limited to, bonuses, rentals and royalties.

Applicant: L & L Exploration to Agency and by Resolution from the Louisiana Department Of Transportation And Development authorizing the Mineral Board to act in its behalf

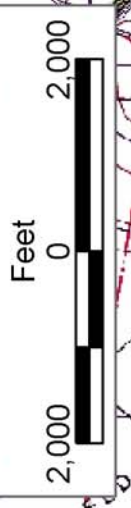
Bidder	Cash Payment	Price/Acre	Rental	Oil	Gas	Other



P.O.B.
X=1,719,100.00
Y=612,000.00

T8S - R2E

ACADIA PARISH



TRACT 36400 - Jefferson Parish, Louisiana

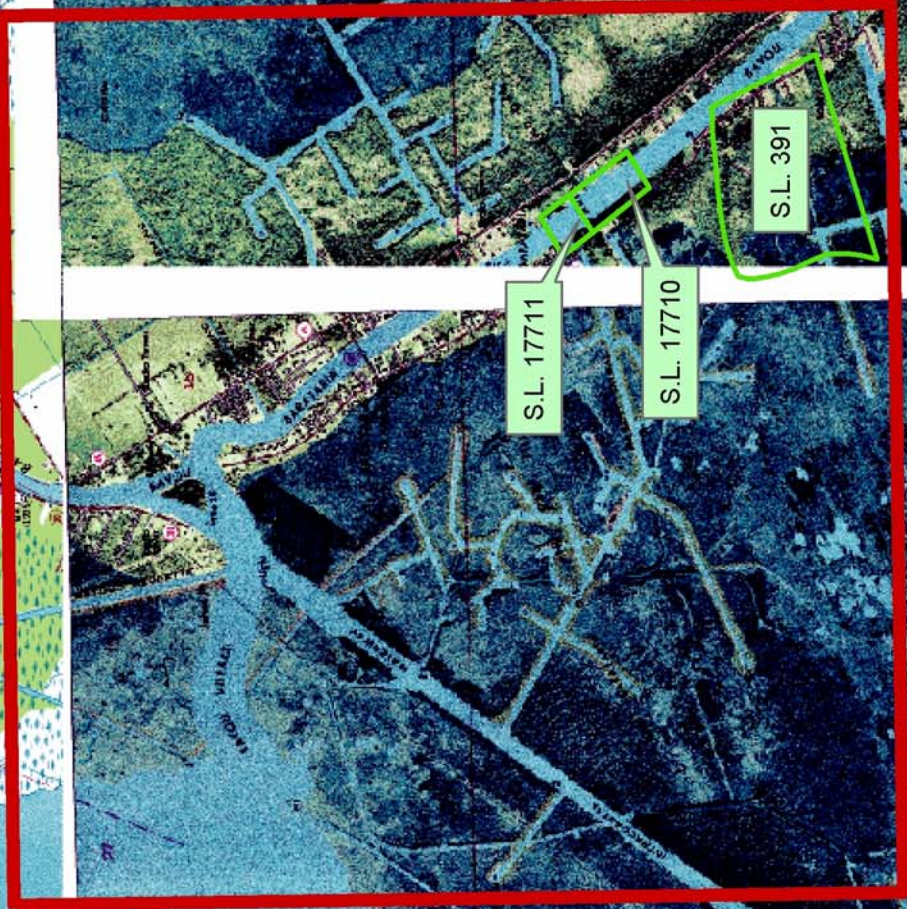
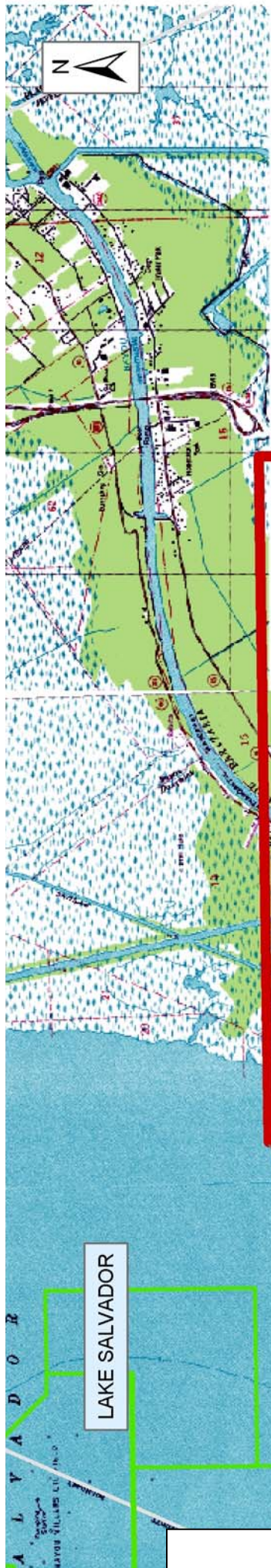
A certain Tract of land, excluding the beds and bottoms of all navigable waters, belonging to and not presently under mineral lease from Louisiana Department Of Transportation And Development on June 9, 2004, being more fully described as follows: All of the mineral rights, title and interest in any lands, highways, right of ways and roads located within the following Geological Area. Beginning at a point having Coordinates of X = 2,371,288.00 and Y = 397,146.00; thence East 18,480.00 feet to a point having Coordinates of X = 2,389,768.00 and Y = 397,146.00; thence South 18,480.00 feet to a point having Coordinates of X = 2,389,768.00 and Y = 378,666.00; thence West 18,480.00 feet to a point having Coordinates of X = 2,371,288.00 and Y = 378,666.00; thence North 18,480.00 feet to the point of beginning, containing approximately **57 acres**, all as more particularly outlined on a plat on file in the Office of Mineral Resources, Department of Natural Resources. The description is based on information provided by the State Agency regarding location and ownership of surface and mineral rights. All distances, bearing and coordinates, if applicable, are based on the Louisiana Coordinate System of 1927, (North or South Zone).

NOTE: The above description of the Tract nominated for lease has been provided and corrected, where required, exclusively by the nomination party. Any mineral lease selected from this Tract and awarded by the Louisiana State Mineral Board shall be without warranty of any kind, either express, implied, or statutory, including, but not limited to, the implied warranties of merchantability and fitness for a particular purpose. Should the mineral lease awarded by the Louisiana State Mineral Board be subsequently modified, cancelled or abrogated due to the existence of conflicting leases, operating agreements, private claims or other future obligations or conditions which may affect all or any portion of the leased Tract, it shall not relieve the Lessee of the obligation to pay any bonus due thereon to the Louisiana State Mineral Board, nor shall the Louisiana State Mineral Board be obligated to refund any consideration paid by the Lessor prior to such modification, cancellation, or abrogation, including, but not limited to, bonuses, rentals and royalties.

NOTE: The State of Louisiana does hereby reserve, and this lease shall be subject to, the imprescriptible right of surface use in the nature of a servitude in favor of the Department of Natural Resources, including its Offices and Commissions, for the sole purpose of implementing, constructing, servicing and maintaining approved coastal zone management and/or restoration projects. Utilization of any and all rights derived under this lease by the mineral lessee, its agents, successors or assigns, shall not interfere with nor hinder the reasonable surface use by the Department of Natural Resources, its Offices or Commissions, as herein above reserved.

Applicant: Ihdw Petroleum Company to Agency and by Resolution from the Louisiana Department Of Transportation And Development authorizing the Mineral Board to act in its behalf

Bidder	Cash Payment	Price/Acre	Rental	Oil	Gas	Other



P.O.B.
X=2,371,288.00
Y=397,146.00

LAKE SALVADOR

INTRACOASTAL WATERWAY

JEFFERSON PARISH

S.L. 17711

S.L. 17710

S.L. 391

T15S - R23E

T16S - R23E

BARATARIA BAY WATERWAY

