

**TRACT 36387 - Portion of Block 36, Main Pass Area, Revised, Plaquemines Parish, Louisiana**

All of the lands now or formerly constituting the beds and bottoms of all water bodies of every nature and description the title of which vests in the State of Louisiana, together with all islands arising therein and other lands formed by accretion or by reliction, where allowed by law, excepting tax adjudicated lands, and not presently under mineral lease on June 9, 2004, situated in Plaquemines Parish, Louisiana, and more particularly described as follows: Beginning at the Southwest corner of State Lease No. 18013 and a point on the West line of Block 36, Main Pass Area, Revised, having Coordinates of X = 2,620,600.00 and Y = 283,218.00; thence along the boundaries of said State Lease No. 18013 the following: East 5,170.00 feet, North 14 degrees 23 minutes 20 seconds West 1,891.33 feet and North 79 degrees 44 minutes 56 seconds West 2,275.74 feet to a point on the North line of said State Lease No. 18013 having Coordinates of X = 2,623,060.59 and Y = 285,455.00; thence East 12,289.41 feet to a point on the East line of said Block 36 having Coordinates of X = 2,635,350.00 and Y = 285,455.00; thence South 868.00 feet along the East line of said Block 36 to the Northeast corner of State Lease No. 18014 having Coordinates of X = 2,635,350.00 and Y = 284,587.00; thence along the boundaries of said State Lease No. 18014 the following: West 7,441.00 feet, South 3,233.00 feet, South 76 degrees 49 minutes 26 seconds East 5,896.22 feet, North 1,180.00 feet and North 64 degrees 31 minutes 25 seconds East 1,883.11 feet to its Southeast corner and a point on the East line of said Block 36 having Coordinates of X = 2,635,350.00 and Y = 282,000.00; thence South 3,920.00 feet along the East line of said Block 36 to its Southeast corner having Coordinates of X = 2,635,350.00 and Y = 278,080.00; thence West 14,750.00 feet along the South line of said Block 36 to its Southwest corner having Coordinates of X = 2,620,600.00 and Y = 278,080.00; thence North 5,138.00 feet to the point of beginning, containing approximately **1,625.01 acres**, all as more particularly outlined on a plat on file in the Office of Mineral Resources, Department of Natural Resources. All bearings, distances and coordinates are based on Louisiana Coordinate System of 1927, (North or South Zone), where applicable.

NOTE: The above description of the Tract nominated for lease has been provided and corrected, where required, exclusively by the nomination party. Any mineral lease selected from this Tract and awarded by the Louisiana State Mineral Board shall be without warranty of any kind, either express, implied, or statutory, including, but not limited to, the implied warranties of merchantability and fitness for a particular purpose. Should the mineral lease awarded by the Louisiana State Mineral Board be subsequently modified, cancelled or abrogated due to the existence of conflicting leases, operating agreements, private claims or other future obligations or conditions which may affect all or any portion of the leased Tract, it shall not relieve the Lessee of the obligation to pay any bonus due thereon to the Louisiana State Mineral Board, nor shall the Louisiana State Mineral Board be obligated to refund any consideration

paid by the Lessor prior to such modification, cancellation, or abrogation, including, but not limited to, bonuses, rentals and royalties.

NOTE: The State of Louisiana does hereby reserve, and this lease shall be subject to, the imprescriptible right of surface use in the nature of a servitude in favor of the Department of Natural Resources, including its Offices and Commissions, for the sole purpose of implementing, constructing, servicing and maintaining approved coastal zone management and/or restoration projects. Utilization of any and all rights derived under this lease by the mineral lessee, its agents, successors or assigns, shall not interfere with nor hinder the reasonable surface use by the Department of Natural Resources, its Offices or Commissions, as herein above reserved.

Applicant: Leslie L. Moore

Bidder	Cash Payment	Price/Acre	Rental	Oil	Gas	Other



BRETON  
SOUND  
AREA

PLAQUEMINES PARISH

MAIN PASS AREA, REVISED

SL 1961

P.O.B.  
X=2,620,600.00  
Y=283,218.00

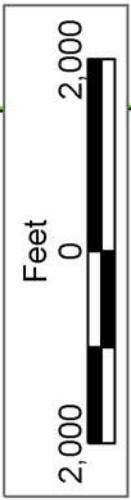
SL 18013

SL 18014

BLOCK MP0036

BLOCK MP0049

SL 16770



**TRACT 36388 - Portion of Block 49, Breton Sound Area, Plaquemines Parish, Louisiana**

All of the lands now or formerly constituting the beds and bottoms of all water bodies of every nature and description the title of which vests in the State of Louisiana, together with all islands arising therein and other lands formed by accretion or by reliction, where allowed by law, excepting tax adjudicated lands, and not presently under mineral lease on June 9, 2004, situated in Plaquemines Parish, Louisiana, and more particularly described as follows: Beginning at the Southeast corner of Block 49, Breton Sound Area, having Coordinates of X = 2,650,100.00 and Y = 278,080.00; thence West 14,750.00 feet along the South line of said Block 49 to its Southwest corner having Coordinates of X = 2,635,350.00 and Y = 278,080.00; thence North 7,375.00 feet along the West line of said Block 49 to a point having Coordinates of X = 2,635,350.00 and Y = 285,455.00; thence East 14,750.00 feet to a point on the East line of said Block 49 having Coordinates of X = 2,650,100.00 and Y = 285,455.00; thence South 7,375.00 feet to the Point of Beginning, containing approximately **2,497.27 acres**, all as more particularly outlined on a plat on file in the Office of Mineral Resources, Department of Natural Resources. All bearings, distances and coordinates are based on Louisiana Coordinate System of 1927, (North or South Zone), where applicable.

NOTE: The above description of the Tract nominated for lease has been provided and corrected, where required, exclusively by the nomination party. Any mineral lease selected from this Tract and awarded by the Louisiana State Mineral Board shall be without warranty of any kind, either express, implied, or statutory, including, but not limited to, the implied warranties of merchantability and fitness for a particular purpose. Should the mineral lease awarded by the Louisiana State Mineral Board be subsequently modified, cancelled or abrogated due to the existence of conflicting leases, operating agreements, private claims or other future obligations or conditions which may affect all or any portion of the leased Tract, it shall not relieve the Lessee of the obligation to pay any bonus due thereon to the Louisiana State Mineral Board, nor shall the Louisiana State Mineral Board be obligated to refund any consideration paid by the Lessor prior to such modification, cancellation, or abrogation, including, but not limited to, bonuses, rentals and royalties.

NOTE: The State of Louisiana does hereby reserve, and this lease shall be subject to, the imprescriptible right of surface use in the nature of a servitude in favor of the Department of Natural Resources, including its Offices and Commissions, for the sole purpose of implementing, constructing, servicing and maintaining approved coastal zone management and/or restoration projects. Utilization of any and all rights derived under this lease by the mineral lessee, its agents, successors or assigns, shall not interfere with nor hinder the reasonable surface use by the Department of Natural Resources, its Offices or Commissions, as herein above reserved.

Applicant: Leslie L. Moore

Bidder	Cash Payment	Price/Acre	Rental	Oil	Gas	Other



BRETON SOUND AREA

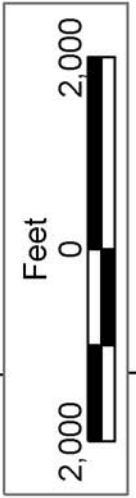
PLAQUEMINES PARISH

BLOCK BS0049

BLOCK MP0048

MAIN PASS AREA, REVISED

P.O.B.  
X=2,650,100.00  
Y=278,080.00



SL 18014

SL 16770

**TRACT 36389 - Plaquemines Parish, Louisiana**

All of the lands now or formerly constituting the beds and bottoms of all water bodies of every nature and description the title of which vests in the State of Louisiana, together with all islands arising therein and other lands formed by accretion or by reliction, where allowed by law, excepting tax adjudicated lands, and not presently under mineral lease on June 9, 2004, situated in Plaquemines Parish, Louisiana, and more particularly described as follows: Beginning at a point having Coordinates of X = 2,552,715.00 and Y = 265,815.00; thence North 45 degrees 00 minutes 00 seconds East 4,331.74 feet to a point having Coordinates of X = 2,555,778.00 and Y = 268,878.00; thence South 55 degrees 33 minutes 56 seconds East 10,396.79 feet to a point having Coordinates of X = 2,564,353.00 and Y = 262,999.00; thence South 76 degrees 00 minutes 00 seconds West approximately 683 feet to the most Northerly corner of State Lease No. 16710; thence South 76 degrees 00 minutes 00 seconds West approximately 2,000 feet on the Northwestern boundary of said State Lease No. 16710 to a point having Coordinates of X = 2,561,750.00 and Y = 262,350.00; thence South 76 degrees 00 minutes 00 seconds West approximately 2,347 feet on the boundary of said State Lease No. 16710 to its most Westerly corner; thence South 76 degrees 00 minutes 00 seconds West approximately 720 feet to a point having Coordinates of X = 2,558,774.00 and Y = 261,608.00; thence North 55 degrees 13 minutes 34 seconds West 7,376.34 feet to the point of beginning, **LESS AND EXCEPT** that portion if any of State Lease No. 16710 that may fall within the above described tract, containing approximately **660 acres**, all as more particularly outlined on a plat on file in the Office of Mineral Resources, Department of Natural Resources. All bearings, distances and coordinates are based on Louisiana Coordinate System of 1927, (North or South Zone), where applicable.

NOTE: The above description of the Tract nominated for lease has been provided and corrected, where required, exclusively by the nomination party. Any mineral lease selected from this Tract and awarded by the Louisiana State Mineral Board shall be without warranty of any kind, either express, implied, or statutory, including, but not limited to, the implied warranties of merchantability and fitness for a particular purpose. Should the mineral lease awarded by the Louisiana State Mineral Board be subsequently modified, cancelled or abrogated due to the existence of conflicting leases, operating agreements, private claims or other future obligations or conditions which may affect all or any portion of the leased Tract, it shall not relieve the Lessee of the obligation to pay any bonus due thereon to the Louisiana State Mineral Board, nor shall the Louisiana State Mineral Board be obligated to refund any consideration paid by the Lessor prior to such modification, cancellation, or abrogation, including, but not limited to, bonuses, rentals and royalties.

NOTE: The State of Louisiana does hereby reserve, and this lease shall be subject to, the imprescriptible right of surface use in the nature of a servitude in favor of the Department of Natural Resources, including its

Offices and Commissions, for the sole purpose of implementing, constructing, servicing and maintaining approved coastal zone management and/or restoration projects. Utilization of any and all rights derived under this lease by the mineral lessee, its agents, successors or assigns, shall not interfere with nor hinder the reasonable surface use by the Department of Natural Resources, its Offices or Commissions, as herein above reserved.

NOTE: The Department of Wildlife and Fisheries has designated certain areas in the coastal waters of the State of Louisiana as Oyster Seed Bed Areas. The exact location of those Seed Bed Areas must be obtained from the Department of Wildlife and Fisheries and any work done under a mineral lease from the State of Louisiana may necessarily be conducted in conformity with the rules and regulations promulgated by the said Department of Wildlife and Fisheries for Oyster Seed Bed Areas.

Applicant: Harold J. Anderson

Bidder	Cash Payment	Price/Acre	Rental	Oil	Gas	Other





PLAQUEMINES PARISH

MISSISSIPPI RIVER

T19S - R16E

T20S - R28E

SL 16710

P.O.B.  
X=2,552,715.00  
Y=265,815.00





**TRACT 36390 - Terrebonne Parish, Louisiana**

All of the lands now or formerly constituting the beds and bottoms of all water bodies of every nature and description the title of which vests in the State of Louisiana, together with all islands arising therein and other lands formed by accretion or by reliction, where allowed by law, excepting tax adjudicated lands, and not presently under mineral lease on June 9, 2004, situated in Terrebonne Parish, Louisiana, and more particularly described as follows: Beginning at a point on the South Line of State Lease No. 199, as amended, having Coordinates of X = 2,274,627.93 and Y = 187,012.08; thence North 89 degrees 34 minutes 50 seconds East 6,683.19 feet along a South boundary of said State Lease No. 199 to a Southeast corner, having Coordinates of X = 2,281,310.94 and Y = 187,061.00; thence South 1,061.00 feet to a point having Coordinates of X = 2,281,310.94 and Y = 186,000.00; thence West 1,638.85 feet to a point having Coordinates of X = 2,279,672.09 and Y = 186,000.00; thence South 10,145.13 feet to a point on the North Line of State Lease No. 188, as amended, having Coordinates of X = 2,279,672.09 and Y = 175,854.87; thence along the boundaries of said State Lease No. 188 the following: South 00 degrees 24 minutes 59 seconds East 1,006.32 feet to a point having Coordinates of X = 2,279,679.41 and Y = 174,848.58, South 89 degrees 35 minutes 01 seconds West 2,550.00 feet to a point having Coordinates of X = 2,277,129.47 and Y = 174,830.04, North 00 degrees 24 minutes 59 seconds West 256.32 feet to a point having Coordinates of X = 2,277,127.61 and Y = 175,086.36 and South 89 degrees 35 minutes 01 seconds West 2,850.07 feet, being a point on the North line of said State Lease No. 188 having Coordinates of X = 2,274,277.61 and Y = 175,065.64; thence North 01 degrees 40 minutes 47 seconds East 11,951.57 feet to the point of beginning, containing approximately **1,485.87 acres**, all as more particularly outlined on a plat on file in the Office of Mineral Resources, Department of Natural Resources. All bearings, distances and coordinates are based on Louisiana Coordinate System of 1927, (North or South Zone), where applicable.

NOTE: The above description of the Tract nominated for lease has been provided and corrected, where required, exclusively by the nomination party. Any mineral lease selected from this Tract and awarded by the Louisiana State Mineral Board shall be without warranty of any kind, either express, implied, or statutory, including, but not limited to, the implied warranties of merchantability and fitness for a particular purpose. Should the mineral lease awarded by the Louisiana State Mineral Board be subsequently modified, cancelled or abrogated due to the existence of conflicting leases, operating agreements, private claims or other future obligations or conditions which may affect all or any portion of the leased Tract, it shall not relieve the Lessee of the obligation to pay any bonus due thereon to the Louisiana State Mineral Board, nor shall the Louisiana State Mineral Board be obligated to refund any consideration paid by the Lessor prior to such modification, cancellation, or abrogation, including, but not limited to, bonuses, rentals and royalties.

NOTE: The State of Louisiana does hereby reserve, and this lease shall be subject to, the imprescriptible right of surface use in the nature of a servitude in favor of the Department of Natural Resources, including its Offices and Commissions, for the sole purpose of implementing, constructing, servicing and maintaining approved coastal zone management and/or restoration projects. Utilization of any and all rights derived under this lease by the mineral lessee, its agents, successors or assigns, shall not interfere with nor hinder the reasonable surface use by the Department of Natural Resources, its Offices or Commissions, as herein above reserved.

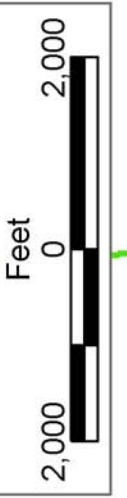
NOTE: The Department of Wildlife and Fisheries has designated certain areas in the coastal waters of the State of Louisiana as Oyster Seed Bed Areas. The exact location of those Seed Bed Areas must be obtained from the Department of Wildlife and Fisheries and any work done under a mineral lease from the State of Louisiana may necessarily be conducted in conformity with the rules and regulations promulgated by the said Department of Wildlife and Fisheries for Oyster Seed Bed Areas.

Applicant: Barker Energy

Bidder	Cash Payment	Price/Acre	Rental	Oil	Gas	Other



TERREBONNE PARISH



SL 199

SL 188

P.O.B.  
X=2,274,627.93  
Y=187,012.08

TERREBONNE BAY

**TRACT 36391 - Terrebonne Parish, Louisiana**

All of the lands now or formerly constituting the beds and bottoms of all water bodies of every nature and description the title of which vests in the State of Louisiana, together with all islands arising therein and other lands formed by accretion or by reliction, where allowed by law, excepting tax adjudicated lands, and not presently under mineral lease on June 9, 2004, situated in Terrebonne Parish, Louisiana, and more particularly described as follows: Beginning at a point having Coordinates of X = 2,286,900.00 and Y = 186,000.00; thence South 14,289.93 feet to a point on the North line of State Lease No. 188, as amended, having Coordinates of X = 2,286,900.00 and Y = 171,710.07; thence along the boundaries of said State Lease No. 188 the following: South 89 degrees 35 minutes 01 seconds West 1,977.94 feet to a point having Coordinates of X = 2,284,922.11 and Y = 171,695.70, North 35 degrees 24 minutes 59 seconds West 950.00 feet to a point having Coordinates of X = 2,284,371.58 and Y = 172,469.91, North 00 degrees 24 minutes 59 seconds West 2,811.75 feet to a point having Coordinates of X = 2,284,351.14 and Y = 175,281.59, along a curve with a center of X = 2,276,860.59 and Y = 161,324.61 and a radius of 15,840.00 feet to a point having Coordinates of X = 2,283,109.64 and Y = 175,879.85 and South 89 degrees 35 minutes 01 seconds West 3,437.64 feet, being a point on the North Line of said State Lease No. 188 having Coordinates of X = 2,279,672.09 and Y = 175,854.87; thence North 10,145.13 feet to a point having Coordinates of X = 2,279,672.09 and Y = 186,000.00; thence East 7,227.91 feet to the point of beginning, containing approximately **1,927.02 acres**, all as more particularly outlined on a plat on file in the Office of Mineral Resources, Department of Natural Resources. All bearings, distances and coordinates are based on Louisiana Coordinate System of 1927, (North or South Zone), where applicable.

NOTE: The above description of the Tract nominated for lease has been provided and corrected, where required, exclusively by the nomination party. Any mineral lease selected from this Tract and awarded by the Louisiana State Mineral Board shall be without warranty of any kind, either express, implied, or statutory, including, but not limited to, the implied warranties of merchantability and fitness for a particular purpose. Should the mineral lease awarded by the Louisiana State Mineral Board be subsequently modified, cancelled or abrogated due to the existence of conflicting leases, operating agreements, private claims or other future obligations or conditions which may affect all or any portion of the leased Tract, it shall not relieve the Lessee of the obligation to pay any bonus due thereon to the Louisiana State Mineral Board, nor shall the Louisiana State Mineral Board be obligated to refund any consideration paid by the Lessor prior to such modification, cancellation, or abrogation, including, but not limited to, bonuses, rentals and royalties.

NOTE: The State of Louisiana does hereby reserve, and this lease shall be subject to, the imprescriptible right of surface use in the nature of a servitude in favor of the Department of Natural Resources, including its Offices and Commissions, for the sole purpose of implementing,

constructing, servicing and maintaining approved coastal zone management and/or restoration projects. Utilization of any and all rights derived under this lease by the mineral lessee, its agents, successors or assigns, shall not interfere with nor hinder the reasonable surface use by the Department of Natural Resources, its Offices or Commissions, as herein above reserved.

NOTE: The Department of Wildlife and Fisheries has designated certain areas in the coastal waters of the State of Louisiana as Oyster Seed Bed Areas. The exact location of those Seed Bed Areas must be obtained from the Department of Wildlife and Fisheries and any work done under a mineral lease from the State of Louisiana may necessarily be conducted in conformity with the rules and regulations promulgated by the said Department of Wildlife and Fisheries for Oyster Seed Bed Areas.

Applicant: Barker Energy

Bidder	Cash Payment	Price/Acre	Rental	Oil	Gas	Other



TERREBONNE PARISH

LAFOURCHE PARISH

TIMBALIER BAY



P.O.B.  
X=2,286,900.00  
Y=186,000.00



SL 188

**TRACT 36392 - Terrebonne Parish, Louisiana**

All of the lands now or formerly constituting the beds and bottoms of all water bodies of every nature and description the title of which vests in the State of Louisiana, together with all islands arising therein and other lands formed by accretion or by reliction, where allowed by law, excepting tax adjudicated lands, and not presently under mineral lease on June 9, 2004, situated in Terrebonne Parish, Louisiana, and more particularly described as follows: Beginning at a point having Coordinates of X = 2,286,900.00 and Y = 186,000.00; thence East 6,900.00 feet to a point having Coordinates of X = 2,293,800.00 and Y = 186,000.00; thence South 14,280.30 feet to a point having Coordinates of X = 2,293,800.00 and Y = 171,719.70; thence West 5,574.97 to the most East Northeast corner of State Lease No. 188, as amended having Coordinates of X = 2,288,225.03 and Y = 171,719.70; thence South 89 degree 35 minutes 01 seconds West 1,325.06 feet along the North line of said State Lease No. 188 to a point; thence North 14,289.93 feet to the point of beginning, containing approximately **2,262.18 acres**, all as more particularly outlined on a plat on file in the Office of Mineral Resources, Department of Natural Resources. All bearings, distances and coordinates are based on Louisiana Coordinate System of 1927, (North or South Zone), where applicable.

NOTE: The above description of the Tract nominated for lease has been provided and corrected, where required, exclusively by the nomination party. Any mineral lease selected from this Tract and awarded by the Louisiana State Mineral Board shall be without warranty of any kind, either express, implied, or statutory, including, but not limited to, the implied warranties of merchantability and fitness for a particular purpose. Should the mineral lease awarded by the Louisiana State Mineral Board be subsequently modified, cancelled or abrogated due to the existence of conflicting leases, operating agreements, private claims or other future obligations or conditions which may affect all or any portion of the leased Tract, it shall not relieve the Lessee of the obligation to pay any bonus due thereon to the Louisiana State Mineral Board, nor shall the Louisiana State Mineral Board be obligated to refund any consideration paid by the Lessor prior to such modification, cancellation, or abrogation, including, but not limited to, bonuses, rentals and royalties.

NOTE: The State of Louisiana does hereby reserve, and this lease shall be subject to, the imprescriptible right of surface use in the nature of a servitude in favor of the Department of Natural Resources, including its Offices and Commissions, for the sole purpose of implementing, constructing, servicing and maintaining approved coastal zone management and/or restoration projects. Utilization of any and all rights derived under this lease by the mineral lessee, its agents, successors or assigns, shall not interfere with nor hinder the reasonable surface use by the Department of Natural Resources, its Offices or Commissions, as herein above reserved.



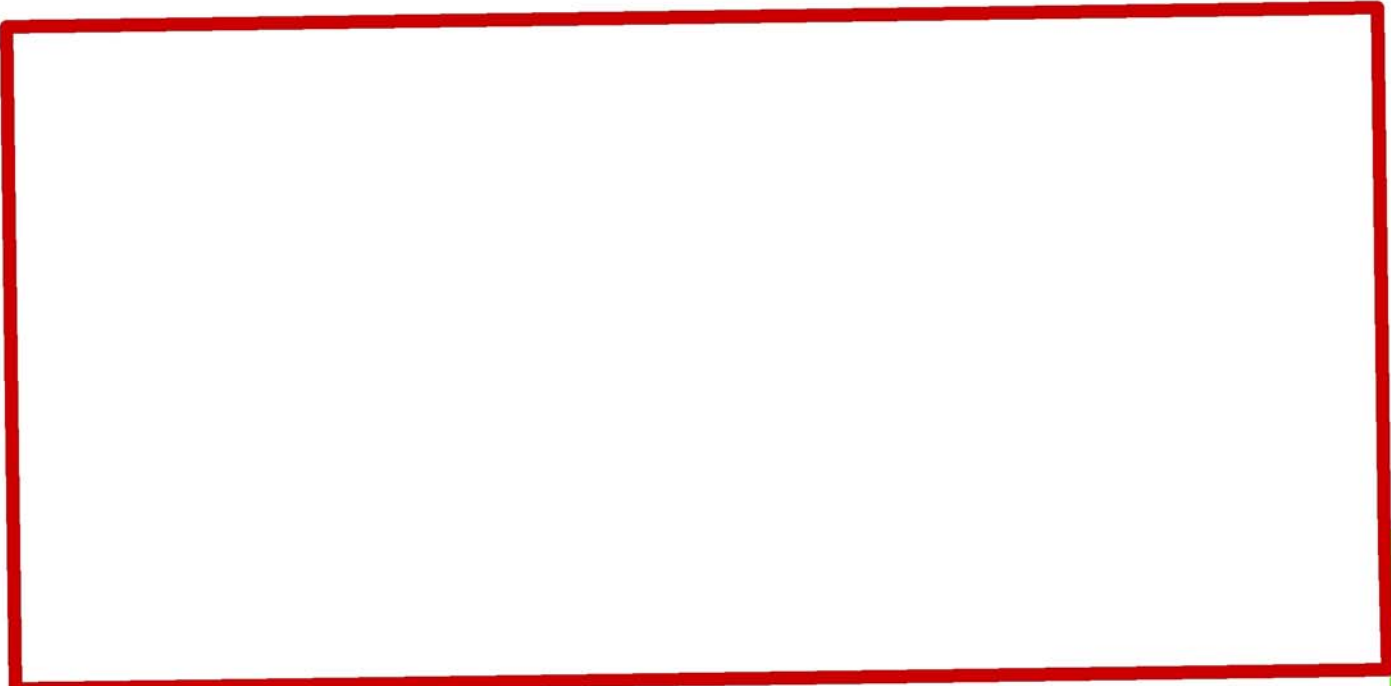
NOTE: The Department of Wildlife and Fisheries has designated certain areas in the coastal waters of the State of Louisiana as Oyster Seed Bed Areas. The exact location of those Seed Bed Areas must be obtained from the Department of Wildlife and Fisheries and any work done under a mineral lease from the State of Louisiana may necessarily be conducted in conformity with the rules and regulations promulgated by the said Department of Wildlife and Fisheries for Oyster Seed Bed Areas.

Applicant: Barker Energy

Bidder	Cash Payment	Price/Acre	Rental	Oil	Gas	Other



LAFOURCHE PARISH



P.O.B.  
X=2,286,900.00  
Y=186,000.00

TIMBALIER BAY

TERREBONNE PARISH

SL 188

**TRACT 36393 - Portion of Block 113, South Timbalier Area, Revised, Terrebonne Parish, Louisiana**

All of the lands now or formerly constituting the beds and bottoms of all water bodies of every nature and description the title of which vests in the State of Louisiana, together with all islands arising therein and other lands formed by accretion or by reliction, where allowed by law, excepting tax adjudicated lands, and not presently under mineral lease on June 9, 2004, situated in Terrebonne Parish, Louisiana, and more particularly described as follows: Beginning at a point within Block 113, South Timbalier Area, Revised, having Coordinates of X = 2,225,660.30 and Y = 183,801.37; thence South 00 degrees 20 minutes 05 seconds East 14,735.29 feet to a point on the North line of State Lease No. 2620, as amended, said point also being on the South line of said Block 113 having Coordinates of X = 2,225,746.39 and Y = 169,066.33; thence West 5,296.39 feet along the North line of said State Lease No. 2620 and along the South line of said Block 113 to a point, also being the most Easterly Southeast corner of State Lease No. 16510 having Coordinates of X = 2,220,450.00 and Y = 169,066.33; thence North 1,533.67 feet along the East line of said State Lease No. 16510 to its Northeast corner having Coordinates of X = 2,220,450.00 and Y = 170,600.00; thence North 00 degrees 10 minutes 26 seconds West 2,610.71 feet to a point having Coordinates of X = 2,220,442.08 and Y = 173,210.70; thence South 89 degrees 38 minutes 19 seconds West 5,977.80 feet to a point on the Southerly boundary line of State Lease No. 199, as amended having Coordinates of X = 2,214,464.40 and Y = 173,173.00; thence along the boundary of said State Lease No. 199 the following courses: North 00 degrees 20 minutes 05 seconds West 800.00 feet, North 89 degrees 39 minutes 55 seconds East 4,903.10 feet; North 12 degrees 09 minutes 55 seconds East 1,834.50 feet, North 64 degrees 59 minutes 55 seconds East 1,442.00 feet, North 00 degrees 39 minutes 55 seconds East 144.00 feet, North 07 degrees 04 minutes 55 seconds East 1,200.00 feet, North 37 degrees 39 minutes 55 seconds East 950.00 feet, North 36 degrees 39 minutes 55 seconds East 815.00 feet, North 02 degrees 20 minutes 05 seconds West 395.00 feet, North 00 degrees 20 minutes 05 seconds West 1,950.00 feet, North 17 degrees 19 minutes 55 seconds East 871.00 feet and North 57 degrees 41 minutes 55 seconds East 2,761.19 feet to a point on the Eastern boundary line of said State Lease No. 199 having Coordinates of X = 2,224,838.88 and Y = 183,796.57; thence North 89 degrees 39 minutes 55 seconds East 821.44 feet to the point of beginning, **LESS AND EXCEPT** any portions of State Lease No. 199, as amended, State Lease No. 2620, as amended and Operating Agreement 0266 that may lie within the above described tract, containing approximately **1,568 acres**, all as more particularly outlined on a plat on file in the Office of Mineral Resources, Department of Natural Resources. All bearings, distances and coordinates are based on Louisiana Coordinate System of 1927, (North or South Zone), where applicable.

NOTE: The above description of the Tract nominated for lease has been provided and corrected, where required, exclusively by the nomination party. Any mineral lease selected from this Tract and awarded by the

Louisiana State Mineral Board shall be without warranty of any kind, either express, implied, or statutory, including, but not limited to, the implied warranties of merchantability and fitness for a particular purpose. Should the mineral lease awarded by the Louisiana State Mineral Board be subsequently modified, cancelled or abrogated due to the existence of conflicting leases, operating agreements, private claims or other future obligations or conditions which may affect all or any portion of the leased Tract, it shall not relieve the Lessee of the obligation to pay any bonus due thereon to the Louisiana State Mineral Board, nor shall the Louisiana State Mineral Board be obligated to refund any consideration paid by the Lessor prior to such modification, cancellation, or abrogation, including, but not limited to, bonuses, rentals and royalties.

NOTE: The State of Louisiana does hereby reserve, and this lease shall be subject to, the imprescriptible right of surface use in the nature of a servitude in favor of the Department of Natural Resources, including its Offices and Commissions, for the sole purpose of implementing, constructing, servicing and maintaining approved coastal zone management and/or restoration projects. Utilization of any and all rights derived under this lease by the mineral lessee, its agents, successors or assigns, shall not interfere with nor hinder the reasonable surface use by the Department of Natural Resources, its Offices or Commissions, as herein above reserved.

NOTE: It appears, according to our records, that a portion of this Tract is located within the restrictive safety fairway area as set out by the Corps of Engineers, U.S. Army and/or the restrictive anchorage area as set out by the U.S. Coast Guard.

NOTE: The Department of Wildlife and Fisheries has designated certain areas in the coastal waters of the State of Louisiana as Oyster Seed Bed Areas. The exact location of those Seed Bed Areas must be obtained from the Department of Wildlife and Fisheries and any work done under a mineral lease from the State of Louisiana may necessarily be conducted in conformity with the rules and regulations promulgated by the said Department of Wildlife and Fisheries for Oyster Seed Bed Areas.

Bidder	Cash Payment	Price/Acre	Rental	Oil	Gas	Other

Applicant: The Louisiana Land And Exploration Company





P.O.B.  
X=2,225,660.30  
Y=183,801.37

SOUTH TIMBALIER  
AREA, REVISED

BLOCK ST0113



SL 2620

BLOCK ST0119

AO 0266

SL 16510

TERREBONNE PARISH

SL 199

**TRACT 36394 - Portion of Block 113, South Timbalier Area, Revised, Terrebonne Parish, Louisiana**

All of the lands now or formerly constituting the beds and bottoms of all water bodies of every nature and description the title of which vests in the State of Louisiana, together with all islands arising therein and other lands formed by accretion or by reliction, where allowed by law, excepting tax adjudicated lands, and not presently under mineral lease on June 9, 2004, situated in Terrebonne Parish, Louisiana, and more particularly described as follows: Beginning at a point within Block 113, South Timbalier Area, Revised, having Coordinates of X = 2,225,660.30 and Y = 183,801.37; thence North 89 degrees 39 minutes 55 seconds East 5,109.00 feet to a point having Coordinates of X = 2,230,769.21 and Y = 183,831.22; thence South 00 degrees 00 minutes 02 seconds East 14,764.89 feet to a point on the North line of State Lease No. 2620, as amended having Coordinates of X = 2,230,769.35 and Y = 169,066.33; thence West 5,022.97 feet along the North line of said State Lease No. 2620 to a point having Coordinates of X = 2,225,746.39 and Y = 169,066.33; thence North 00 degrees 20 minutes 05 seconds West 14,735.29 feet to the point of beginning, **LESS AND EXCEPT** any portion of State Lease No. 2620, as amended that may lie within the above described tract, containing approximately **1,715 acres**, all as more particularly outlined on a plat on file in the Office of Mineral Resources, Department of Natural Resources. All bearings, distances and coordinates are based on Louisiana Coordinate System of 1927, (North or South Zone), where applicable.

NOTE: The above description of the Tract nominated for lease has been provided and corrected, where required, exclusively by the nomination party. Any mineral lease selected from this Tract and awarded by the Louisiana State Mineral Board shall be without warranty of any kind, either express, implied, or statutory, including, but not limited to, the implied warranties of merchantability and fitness for a particular purpose. Should the mineral lease awarded by the Louisiana State Mineral Board be subsequently modified, cancelled or abrogated due to the existence of conflicting leases, operating agreements, private claims or other future obligations or conditions which may affect all or any portion of the leased Tract, it shall not relieve the Lessee of the obligation to pay any bonus due thereon to the Louisiana State Mineral Board, nor shall the Louisiana State Mineral Board be obligated to refund any consideration paid by the Lessor prior to such modification, cancellation, or abrogation, including, but not limited to, bonuses, rentals and royalties.

NOTE: The State of Louisiana does hereby reserve, and this lease shall be subject to, the imprescriptible right of surface use in the nature of a servitude in favor of the Department of Natural Resources, including its Offices and Commissions, for the sole purpose of implementing, constructing, servicing and maintaining approved coastal zone management and/or restoration projects. Utilization of any and all rights derived under this lease by the mineral lessee, its agents, successors or assigns, shall not interfere with nor hinder the reasonable surface use by the

Department of Natural Resources, its Offices or Commissions, as herein above reserved.

NOTE: It appears, according to our records, that a portion of this Tract is located within the restrictive safety fairway area as set out by the Corps of Engineers, U.S. Army and/or the restrictive anchorage area as set out by the U.S. Coast Guard.

NOTE: The Department of Wildlife and Fisheries has designated certain areas in the coastal waters of the State of Louisiana as Oyster Seed Bed Areas. The exact location of those Seed Bed Areas must be obtained from the Department of Wildlife and Fisheries and any work done under a mineral lease from the State of Louisiana may necessarily be conducted in conformity with the rules and regulations promulgated by the said Department of Wildlife and Fisheries for Oyster Seed Bed Areas.

Applicant: The Louisiana Land And Exploration Company

Bidder	Cash Payment	Price/Acre	Rental	Oil	Gas	Other



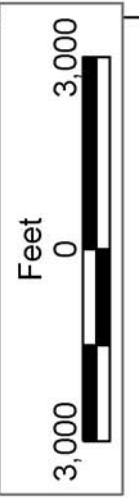


TERREBONNE PARISH

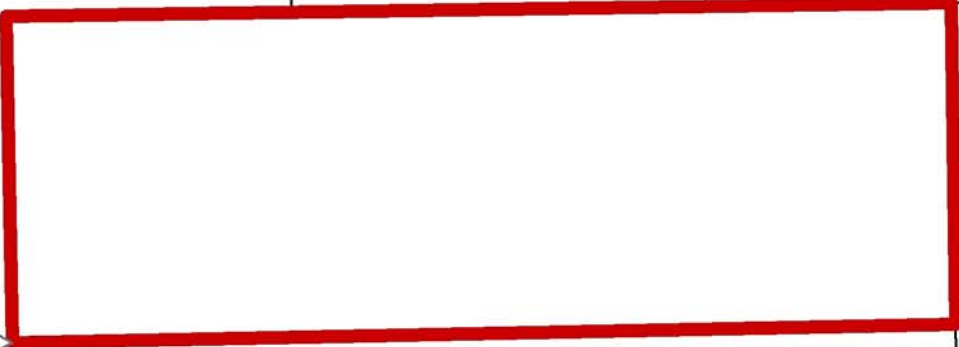
BLOCK ST0114

BLOCK ST0118

SOUTH TIMBALIER  
AREA, REVISED



P.O.B.  
X=2,225,660.30  
Y=183,801.37



SL 2620

BLOCK ST0119

BLOCK ST0113

AO 0266

SL 199

**TRACT 36395 - Portion of Block 113, South Timbalier Area, Revised, Terrebonne Parish, Louisiana**

All of the lands now or formerly constituting the beds and bottoms of all water bodies of every nature and description the title of which vests in the State of Louisiana, together with all islands arising therein and other lands formed by accretion or by reliction, where allowed by law, excepting tax adjudicated lands, and not presently under mineral lease on June 9, 2004, situated in Terrebonne Parish, Louisiana, and more particularly described as follows: Beginning at a point having Coordinates of X = 2,209,913.08 and Y = 167,874.59; thence North 00 degrees 20 minutes 05 seconds West 3,871.73 feet to a point on the Southern boundary line of State Lease No. 199, as amended having Coordinates of X = 2,209,890.46 and Y = 171,746.26; thence along the boundary of said State Lease No. 199 the following courses: North 89 degrees 39 minutes 55 seconds East 352.20 feet, North 00 degrees 20 minutes 05 seconds West 1,400.00 feet and North 89 degrees 39 minutes 55 seconds East 4,230.00 feet to a point on the Southerly boundary line of said State Lease No. 199 having Coordinates of X = 2,214,464.40 and Y = 173,173.00; thence North 89 degrees 38 minutes 19 seconds East 5,977.80 feet to a point within Block 113, South Timbalier Area, Revised, having Coordinates of X = 2,220,442.08 and Y = 173,210.70; thence South 00 degrees 10 minutes 26 seconds East 2,610.71 feet to the Northeast corner of State Lease No. 16510 having Coordinates of X = 2,220,450.00 and Y = 170,600.00; thence along the boundary of said State Lease No. 16510 the following courses: West 7,900.00 feet and South 2,710.00 feet to the Southwest corner of said State Lease No. 16510, also being the Northwest corner of State Lease No. 16511 having Coordinates of X = 2,212,550.00 and Y = 167,890.00; thence South 89 degrees 39 minutes 55 seconds West 2,636.97 feet to the point of beginning, **LESS AND EXCEPT** any portion of State Lease No. 199, as amended that may lie within the above described tract, containing approximately **747 acres**, all as more particularly outlined on a plat on file in the Office of Mineral Resources, Department of Natural Resources. All bearings, distances and coordinates are based on Louisiana Coordinate System of 1927, (North or South Zone), where applicable.

NOTE: The above description of the Tract nominated for lease has been provided and corrected, where required, exclusively by the nomination party. Any mineral lease selected from this Tract and awarded by the Louisiana State Mineral Board shall be without warranty of any kind, either express, implied, or statutory, including, but not limited to, the implied warranties of merchantability and fitness for a particular purpose. Should the mineral lease awarded by the Louisiana State Mineral Board be subsequently modified, cancelled or abrogated due to the existence of conflicting leases, operating agreements, private claims or other future obligations or conditions which may affect all or any portion of the leased Tract, it shall not relieve the Lessee of the obligation to pay any bonus due thereon to the Louisiana State Mineral Board, nor shall the Louisiana State Mineral Board be obligated to refund any consideration

paid by the Lessor prior to such modification, cancellation, or abrogation, including, but not limited to, bonuses, rentals and royalties.

NOTE: The State of Louisiana does hereby reserve, and this lease shall be subject to, the imprescriptible right of surface use in the nature of a servitude in favor of the Department of Natural Resources, including its Offices and Commissions, for the sole purpose of implementing, constructing, servicing and maintaining approved coastal zone management and/or restoration projects. Utilization of any and all rights derived under this lease by the mineral lessee, its agents, successors or assigns, shall not interfere with nor hinder the reasonable surface use by the Department of Natural Resources, its Offices or Commissions, as herein above reserved.

NOTE: The Department of Wildlife and Fisheries has designated certain areas in the coastal waters of the State of Louisiana as Oyster Seed Bed Areas. The exact location of those Seed Bed Areas must be obtained from the Department of Wildlife and Fisheries and any work done under a mineral lease from the State of Louisiana may necessarily be conducted in conformity with the rules and regulations promulgated by the said Department of Wildlife and Fisheries for Oyster Seed Bed Areas.

Applicant: The Louisiana Land And Exploration Company

Bidder	Cash Payment	Price/Acre	Rental	Oil	Gas	Other

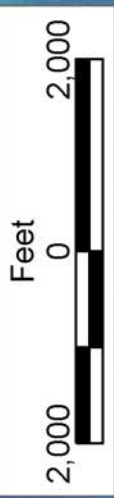




SOUTH TIMBALIER  
AREA, REVISED

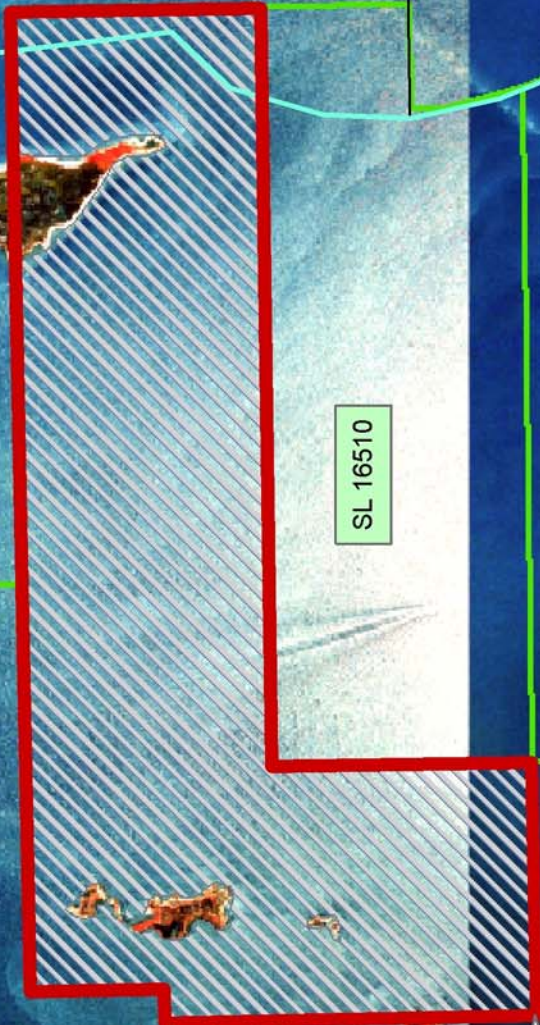
BLOCK ST0113

BLOCK ST0119



TERREBONNE PARISH

SL 199



SL 16510

SL 16511

P.O.B.  
X=-2,209,913.08  
Y=167,874.59

**TRACT 36396 - Terrebonne Parish, Louisiana**

All of the lands now or formerly constituting the beds and bottoms of all water bodies of every nature and description the title of which vests in the State of Louisiana, together with all islands arising therein and other lands formed by accretion or by reliction, where allowed by law, excepting tax adjudicated lands, and not presently under mineral lease on June 9, 2004, situated in Terrebonne Parish, Louisiana, and more particularly described as follows: Beginning at a point having Coordinates of X = 2,209,913.08 and Y = 167,874.59; thence North 89 degrees 39 minutes 55 seconds East 2,636.97 feet to the Southwest corner of State Lease No. 16510, also being the Northwest corner of State Lease No. 16511 having Coordinates of X = 2,212,550.00 and Y = 167,890.00; thence South approximately 300 feet along the West line of said State Lease No. 16511 to it's Southwest corner having a coordinate of X = 2,212,550.00, thence Easterly approximately 585 feet along the South line of said State Lease No. 16511 to the Northwest corner of State Lease No. 16705, having a coordinate of X = 2,213,128.02 ; thence along the boundary of said State Lease No. 16705 the following courses: South approximately 2,290.49 feet and East 3,482.23 feet to a point on the South line of State Lease No. 16705 as amended, also being the most Northerly Northwest corner of State Lease No. 188, as amended having Coordinates of X = 2,216,610.25 and Y = 165,209.74; thence along the boundary of said State Lease No. 188 the following courses: South 00 degrees 20 minutes 06 seconds East 2,008.96 feet, South 89 degrees 39 minutes 54 seconds West 509.80 feet, South 00 degrees 20 minutes 05 seconds East 3,254.50 feet, South 89 degrees 39 minutes 55 seconds West 3,217.30 feet, South 00 degrees 20 minutes 07 seconds East 309.30 feet and South 89 degrees 39 minutes 55 seconds West 4,357.50 feet to a point on the Western boundary of said State Lease No. 188 having Coordinates of X = 2,208,558.34 and Y = 159,589.85; thence North 00 degrees 20 minutes 05 seconds West 2,864.01 feet to a point having Coordinates of X = 2,208,541.61 and Y = 162,453.81; thence North 89 degrees 39 minutes 55 seconds East 1,403.12 feet to a point having Coordinates of X = 2,209,944.70 and Y = 162,462.01; thence North 00 degrees 20 minutes 05 seconds West 5,412.68 feet to the point of beginning, **LESS AND EXCEPT** any portion of State Lease No. 188, as amended that may lie within the above described tract, containing approximately **1,078 acres**, all as more particularly outlined on a plat on file in the Office of Mineral Resources, Department of Natural Resources. All bearings, distances and coordinates are based on Louisiana Coordinate System of 1927, (North or South Zone), where applicable.

NOTE: The above description of the Tract nominated for lease has been provided and corrected, where required, exclusively by the nomination party. Any mineral lease selected from this Tract and awarded by the Louisiana State Mineral Board shall be without warranty of any kind, either express, implied, or statutory, including, but not limited to, the implied warranties of merchantability and fitness for a particular purpose. Should the mineral lease awarded by the Louisiana State Mineral Board be subsequently modified, cancelled or abrogated due to the

existence of conflicting leases, operating agreements, private claims or other future obligations or conditions which may affect all or any portion of the leased Tract, it shall not relieve the Lessee of the obligation to pay any bonus due thereon to the Louisiana State Mineral Board, nor shall the Louisiana State Mineral Board be obligated to refund any consideration paid by the Lessor prior to such modification, cancellation, or abrogation, including, but not limited to, bonuses, rentals and royalties.

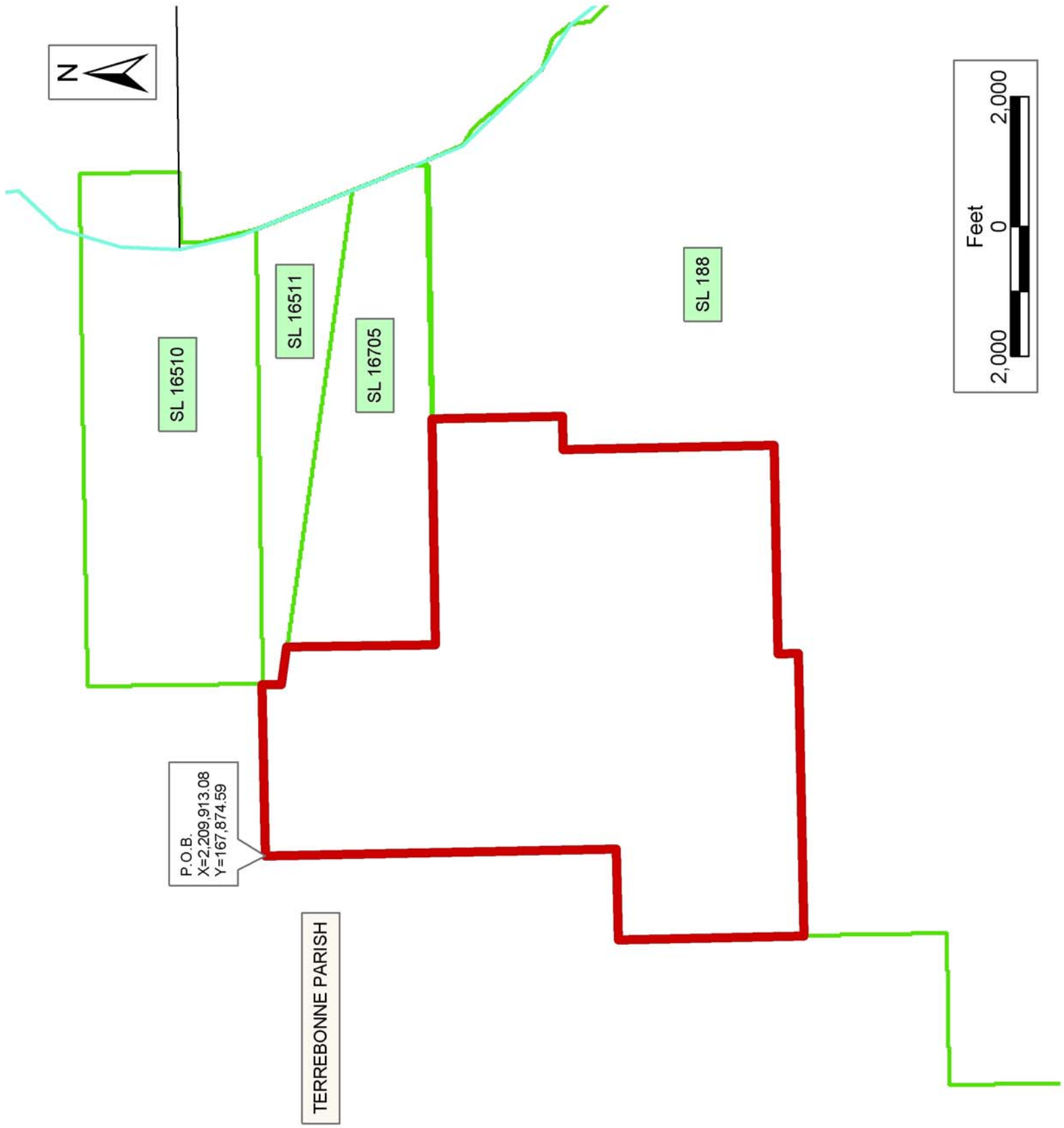
NOTE: The State of Louisiana does hereby reserve, and this lease shall be subject to, the imprescriptible right of surface use in the nature of a servitude in favor of the Department of Natural Resources, including its Offices and Commissions, for the sole purpose of implementing, constructing, servicing and maintaining approved coastal zone management and/or restoration projects. Utilization of any and all rights derived under this lease by the mineral lessee, its agents, successors or assigns, shall not interfere with nor hinder the reasonable surface use by the Department of Natural Resources, its Offices or Commissions, as herein above reserved.

NOTE: The Department of Wildlife and Fisheries has designated certain areas in the coastal waters of the State of Louisiana as Oyster Seed Bed Areas. The exact location of those Seed Bed Areas must be obtained from the Department of Wildlife and Fisheries and any work done under a mineral lease from the State of Louisiana may necessarily be conducted in conformity with the rules and regulations promulgated by the said Department of Wildlife and Fisheries for Oyster Seed Bed Areas.

Applicant: The Louisiana Land And Exploration Company

Bidder	Cash Payment	Price/Acre	Rental	Oil	Gas	Other





P.O.B.  
X=2,209,913.08  
Y=167,874.59

TERREBONNE PARISH

SL 16510

SL 16511

SL 16705

SL 188

