

TRACT 36377 - Portion of Block 23, Main Pass Area, Revised, Plaquemines Parish, Louisiana

All of the lands now or formerly constituting the beds and bottoms of all water bodies of every nature and description the title of which vests in the State of Louisiana, together with all islands arising therein and other lands formed by accretion or by reliction, where allowed by law, excepting tax adjudicated lands, and not presently under mineral lease on June 9, 2004, situated in Plaquemines Parish, Louisiana, and more particularly described as follows: Beginning at the Southeast corner of Block 23, Main Pass Area Revised, having Coordinates X = 2,605,850.00 and Y = 322,330.00; thence West approximately 8,633 feet to a point having a Coordinate of Y = 322,330.00 said point also being on the Western boundary of said Block 23; thence along the Western boundary of said Block 23 the following courses and distances to wit: Northeasterly approximately 4,131 feet to a corner and Northerly approximately 3,564 feet to a point on the Northwest corner of said Block 23 having a Coordinate of Y = 329,705.00; thence East approximately 7,099 feet to a point having Coordinates of X = 2,605,850.00 and Y = 329,705.00; thence South 7,375 feet on and along the East line of said Block 23, to the point of beginning, **LESS AND EXCEPT** any portion of State Lease No. 195, as amended that may lie within the above described tract, containing approximately **1,264 acres**, all as more particularly outlined on a plat on file in the Office of Mineral Resources, Department of Natural Resources. All bearings, distances and coordinates are based on Louisiana Coordinate System of 1927, (North or South Zone), where applicable.

NOTE: The above description of the Tract nominated for lease has been provided and corrected, where required, exclusively by the nomination party. Any mineral lease selected from this Tract and awarded by the Louisiana State Mineral Board shall be without warranty of any kind, either express, implied, or statutory, including, but not limited to, the implied warranties of merchantability and fitness for a particular purpose. Should the mineral lease awarded by the Louisiana State Mineral Board be subsequently modified, cancelled or abrogated due to the existence of conflicting leases, operating agreements, private claims or other future obligations or conditions which may affect all or any portion of the leased Tract, it shall not relieve the Lessee of the obligation to pay any bonus due thereon to the Louisiana State Mineral Board, nor shall the Louisiana State Mineral Board be obligated to refund any consideration paid by the Lessor prior to such modification, cancellation, or abrogation, including, but not limited to, bonuses, rentals and royalties.

NOTE: The State of Louisiana does hereby reserve, and this lease shall be subject to, the imprescriptible right of surface use in the nature of a servitude in favor of the Department of Natural Resources, including its Offices and Commissions, for the sole purpose of implementing, constructing, servicing and maintaining approved coastal zone management and/or restoration projects. Utilization of any and all rights derived under this lease by the mineral lessee, its agents, successors or assigns,

shall not interfere with nor hinder the reasonable surface use by the Department of Natural Resources, its Offices or Commissions, as herein above reserved.

Applicant: Robert A. Schroeder, Inc.

Bidder	Cash Payment	Price/Acre	Rental	Oil	Gas	Other



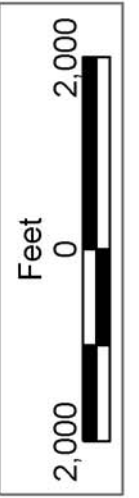
MAIN PASS AREA, REVISED

PLAQUEMINES PARISH

BLOCK MP0023

BLOCK MP0024

P.O.B.
X=2,605,850.00
Y=322,330.00



SL 195

TRACT 36378 - Portion of Block 22, Main Pass Area, Revised, Plaquemines Parish, Louisiana

All of the lands now or formerly constituting the beds and bottoms of all water bodies of every nature and description the title of which vests in the State of Louisiana, together with all islands arising therein and other lands formed by accretion or by reliction, where allowed by law, excepting tax adjudicated lands, and not presently under mineral lease on June 9, 2004, situated in Plaquemines Parish, Louisiana, and more particularly described as follows: Beginning at a point having Coordinates of X = 2,605,850.00 and Y = 322,330.00, said point being the Southwest corner of Block 22, Main Pass Area, Revised; thence North 7,375.00 feet on and along the West line of said Block 22, to a point having Coordinates of X = 2,605,850.00 and Y = 329,705.00; thence East 14,750.00 feet to a point having Coordinates of X = 2,620,600.00 and Y = 329,705.00, said point being on the East line of said Block 22; thence South 4,367.75 feet on and along said East line of said Block 22, to a point having Coordinates of X = 2,620,600.00 and Y = 325,337.25, said point being on the Northern boundary of State Lease No. 16931; thence on and along the Northern, Western and Southern boundaries of said State Lease No. 16931 the following courses and distances, to wit: North 86 degrees 41 minutes 52 seconds West 3,037.51 feet to a point having Coordinates of X = 2,617,567.54 and Y = 325,512.22; South 36 degrees 16 minutes 18 seconds East 1,280.32 feet to a point having Coordinates of X = 2,618,325.00 and Y = 324,480.00; and South 78 degrees 44 minutes 15 seconds East 2,319.67 feet to a point having Coordinates of X = 2,620,600.00 and Y = 324,026.96, said point being on said East line of said Block 22; thence South 1,696.96 feet on and along said East line of said Block 22, to a point having Coordinates of X = 2,620,600.00 and Y = 322,330.00, said point being the Southeast corner of said Block 22; thence West 14,750.00 feet on and along the South line of said Block 22, to the point of beginning, containing approximately **2,428.65 acres**, all as more particularly outlined on a plat on file in the Office of Mineral Resources, Department of Natural Resources. All bearings, distances and coordinates are based on Louisiana Coordinate System of 1927, (North or South Zone), where applicable.

NOTE: The above description of the Tract nominated for lease has been provided and corrected, where required, exclusively by the nomination party. Any mineral lease selected from this Tract and awarded by the Louisiana State Mineral Board shall be without warranty of any kind, either express, implied, or statutory, including, but not limited to, the implied warranties of merchantability and fitness for a particular purpose. Should the mineral lease awarded by the Louisiana State Mineral Board be subsequently modified, cancelled or abrogated due to the existence of conflicting leases, operating agreements, private claims or other future obligations or conditions which may affect all or any portion of the leased Tract, it shall not relieve the Lessee of the obligation to pay any bonus due thereon to the Louisiana State Mineral Board, nor shall the Louisiana State Mineral Board be obligated to refund any consideration

paid by the Lessor prior to such modification, cancellation, or abrogation, including, but not limited to, bonuses, rentals and royalties.

NOTE: The State of Louisiana does hereby reserve, and this lease shall be subject to, the imprescriptible right of surface use in the nature of a servitude in favor of the Department of Natural Resources, including its Offices and Commissions, for the sole purpose of implementing, constructing, servicing and maintaining approved coastal zone management and/or restoration projects. Utilization of any and all rights derived under this lease by the mineral lessee, its agents, successors or assigns, shall not interfere with nor hinder the reasonable surface use by the Department of Natural Resources, its Offices or Commissions, as herein above reserved.

Applicant: Robert A. Schroeder, Inc.

Bidder	Cash Payment	Price/Acre	Rental	Oil	Gas	Other



PLAQUEMINES PARISH

BLOCK MP0022

MAIN PASS AREA, REVISED

BLOCK MP0025

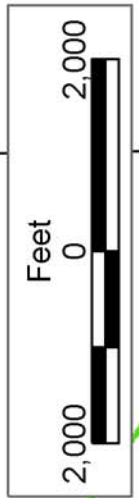
SL 16932

SL 16931

SL 16432

SL 18009

P.O.B.
X=2,605,850.00
Y=322,330.00



TRACT 36379 - Portion of Block 21, Main Pass Area, Revised, Plaquemines Parish, Louisiana

All of the lands now or formerly constituting the beds and bottoms of all water bodies of every nature and description the title of which vests in the State of Louisiana, together with all islands arising therein and other lands formed by accretion or by reliction, where allowed by law, excepting tax adjudicated lands, and not presently under mineral lease on June 9, 2004, situated in Plaquemines Parish, Louisiana, and more particularly described as follows: Beginning at a point having Coordinates of X = 2,624,970.14 and Y = 322,330.00, said point being on the South line of Block 21, Main Pass Area, Revised, said point also being the Southeast corner of State Lease No. 16932; thence North 07 degrees 25 minutes 57 seconds West 2,799.52 feet on and along the Eastern boundary of said State Lease No. 16932, to a point having Coordinates of X = 2,624,608.00 and Y = 325,106.00, said point being the Northeast corner of said State Lease No. 16932, said point also being the Southwest corner of State Lease No. 17247; thence North 71 degrees 58 minutes 17 seconds East 3,540.85 feet on and along the Southern boundary of said State Lease No. 17247, said point having Coordinates of X = 2,627,975.00 and Y = 326,201.86, said point being the Northeast corner of said State Lease No. 17247; thence South 3,871.86 feet to a point having Coordinates of X = 2,627,975.00 and Y = 322,330.00, said point being on said South line of said Block 21; thence West 3,004.86 feet on and along said South line of said Block 21, to the point of beginning, containing approximately **245.39 acres**, all as more particularly outlined on a plat on file in the Office of Mineral Resources, Department of Natural Resources. All bearings, distances and coordinates are based on Louisiana Coordinate System of 1927, (North or South Zone), where applicable.

NOTE: The above description of the Tract nominated for lease has been provided and corrected, where required, exclusively by the nomination party. Any mineral lease selected from this Tract and awarded by the Louisiana State Mineral Board shall be without warranty of any kind, either express, implied, or statutory, including, but not limited to, the implied warranties of merchantability and fitness for a particular purpose. Should the mineral lease awarded by the Louisiana State Mineral Board be subsequently modified, cancelled or abrogated due to the existence of conflicting leases, operating agreements, private claims or other future obligations or conditions which may affect all or any portion of the leased Tract, it shall not relieve the Lessee of the obligation to pay any bonus due thereon to the Louisiana State Mineral Board, nor shall the Louisiana State Mineral Board be obligated to refund any consideration paid by the Lessor prior to such modification, cancellation, or abrogation, including, but not limited to, bonuses, rentals and royalties.

NOTE: The State of Louisiana does hereby reserve, and this lease shall be subject to, the imprescriptible right of surface use in the nature of a servitude in favor of the Department of Natural Resources, including its Offices and Commissions, for the sole purpose of implementing,

constructing, servicing and maintaining approved coastal zone management and/or restoration projects. Utilization of any and all rights derived under this lease by the mineral lessee, its agents, successors or assigns, shall not interfere with nor hinder the reasonable surface use by the Department of Natural Resources, its Offices or Commissions, as herein above reserved.

Applicant: Robert A. Schroeder, Inc.

Bidder	Cash Payment	Price/Acre	Rental	Oil	Gas	Other



SL 15536

BLOCK MP0021

MAIN PASS AREA, REVISED

PLAQUEMINES PARISH

BLOCK MP0026

SL 16935



SL 17247

SL 16932

P.O.B.
X=2,624,970.14
Y=322,330.00

SL 16933

TRACT 36380 - Jefferson Parish, Louisiana

All of the lands now or formerly constituting the beds and bottoms of all water bodies of every nature and description the title of which vests in the State of Louisiana, together with all islands arising therein and other lands formed by accretion or by reliction, where allowed by law, excepting tax adjudicated lands, and not presently under mineral lease on June 9, 2004, situated in Jefferson Parish, Louisiana, and more particularly described as follows: Beginning at a point having Coordinates of X = 2,424,006.00 and Y = 316,542.00; thence West 15,888.00 feet to a point having Coordinates of X = 2,408,118.00 and Y = 316,542.00; thence North 5,880.00 feet to a point having Coordinates of X = 2,408,118.00 and Y = 322,422.00; thence East 10,582.00 feet to a point having Coordinates of X = 2,418,700.00 and Y = 322,422.00; thence North 3,578.00 feet to a point on the South line of State Lease No. 17713 having Coordinates of X = 2,418,700.00 and Y = 326,000.00; thence along the boundary of said State Lease No. 17713 the following courses: East 1,400.00 feet and North 1,718.00 feet to a point having Coordinates of X = 2,420,100.00 and Y = 327,718.00; thence East 3,906.00 feet to a point having Coordinates of X = 2,424,006.00 and Y = 327,718.00; thence South 11,176.00 feet to the point of beginning, containing approximately **733 acres**, all as more particularly outlined on a plat on file in the Office of Mineral Resources, Department of Natural Resources. All bearings, distances and coordinates are based on Louisiana Coordinate System of 1927, (North or South Zone), where applicable.

NOTE: The above description of the Tract nominated for lease has been provided and corrected, where required, exclusively by the nomination party. Any mineral lease selected from this Tract and awarded by the Louisiana State Mineral Board shall be without warranty of any kind, either express, implied, or statutory, including, but not limited to, the implied warranties of merchantability and fitness for a particular purpose. Should the mineral lease awarded by the Louisiana State Mineral Board be subsequently modified, cancelled or abrogated due to the existence of conflicting leases, operating agreements, private claims or other future obligations or conditions which may affect all or any portion of the leased Tract, it shall not relieve the Lessee of the obligation to pay any bonus due thereon to the Louisiana State Mineral Board, nor shall the Louisiana State Mineral Board be obligated to refund any consideration paid by the Lessor prior to such modification, cancellation, or abrogation, including, but not limited to, bonuses, rentals and royalties.

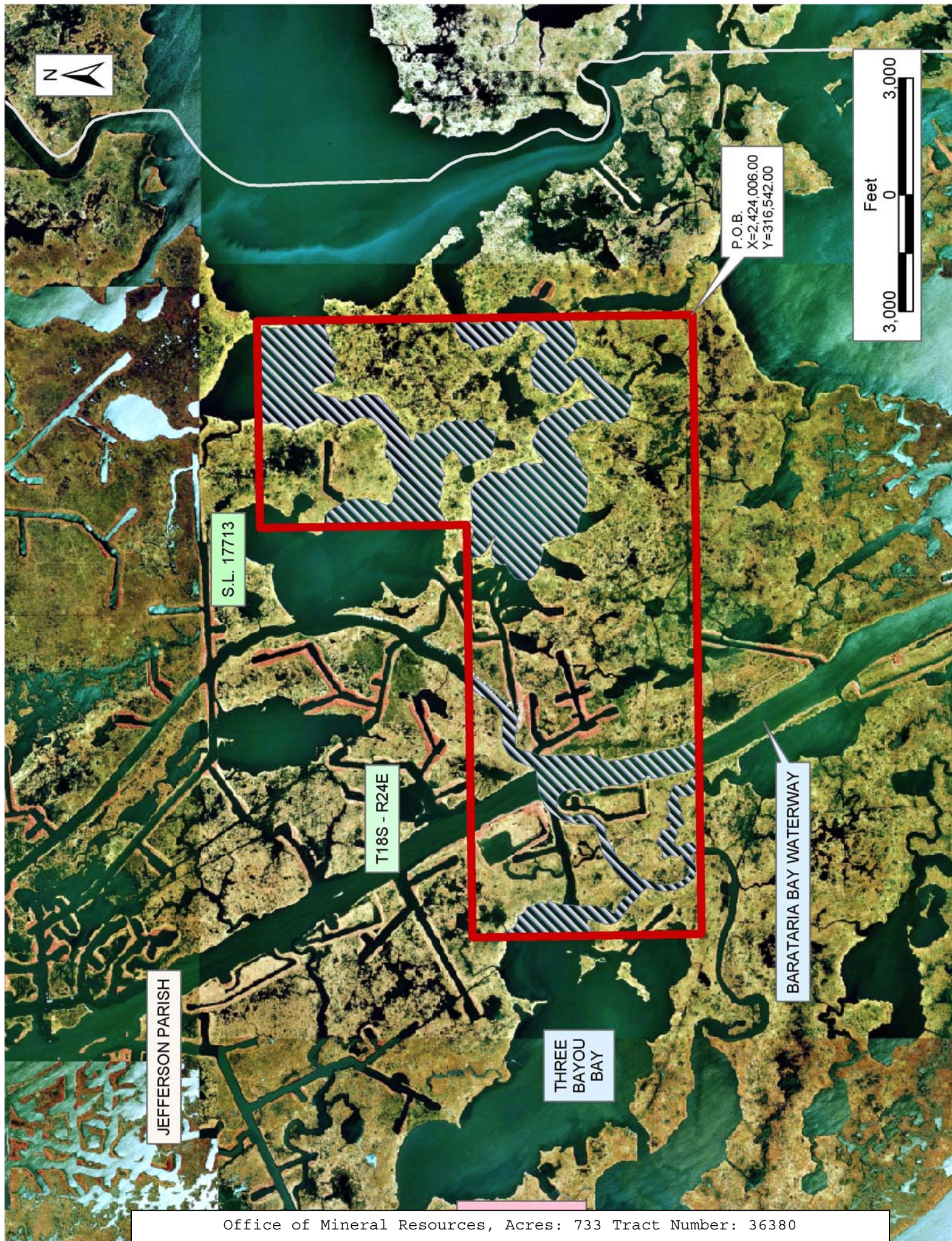
NOTE: The State of Louisiana does hereby reserve, and this lease shall be subject to, the imprescriptible right of surface use in the nature of a servitude in favor of the Department of Natural Resources, including its Offices and Commissions, for the sole purpose of implementing, constructing, servicing and maintaining approved coastal zone management and/or restoration projects. Utilization of any and all rights derived under this lease by the mineral lessee, its agents, successors or assigns, shall not interfere with nor hinder the reasonable surface use by the

Department of Natural Resources, its Offices or Commissions, as herein above reserved.

NOTE: The Department of Wildlife and Fisheries has designated certain areas in the coastal waters of the State of Louisiana as Oyster Seed Bed Areas. The exact location of those Seed Bed Areas must be obtained from the Department of Wildlife and Fisheries and any work done under a mineral lease from the State of Louisiana may necessarily be conducted in conformity with the rules and regulations promulgated by the said Department of Wildlife and Fisheries for Oyster Seed Bed Areas.

Applicant: Ihdw Petroleum Company

Bidder	Cash Payment	Price/Acre	Rental	Oil	Gas	Other



TRACT 36381 - Portion of Block 21, Main Pass Area, Revised, Plaquemines Parish, Louisiana

All of the lands now or formerly constituting the beds and bottoms of all water bodies of every nature and description the title of which vests in the State of Louisiana, together with all islands arising therein and other lands formed by accretion or by reliction, where allowed by law, excepting tax adjudicated lands, and not presently under mineral lease on June 9, 2004, situated in Plaquemines Parish, Louisiana, and more particularly described as follows: Beginning at a point having Coordinates of X = 2,620,600.00 and Y = 322,330.00, said point being the Southwest corner of Block 21, Main Pass Area, Revised; thence North 1,696.96 feet on and along the West line of said Block 21, to a point having Coordinates of X = 2,620,600.00 and Y = 324,026.96, said point being on the Southern boundary of State Lease No. 16932; thence on and along the Southern and Western boundaries of said State Lease No. 16932 the following courses and distances, to wit: South 78 degrees 44 minutes 15 seconds East 2,416.54 feet to a point having Coordinates of X = 2,622,970.00 and Y = 323,555.00; and South 10 degrees 38 minutes 02 seconds East 1,246.40 feet to a point having Coordinates of X = 2,623,200.00 and Y = 322,330.00, said point being on the South line of said Block 21; thence West 2,600.00 feet on and along said South line of said Block 21, to the point of beginning, containing approximately **82.72 acres**, all as more particularly outlined on a plat on file in the Office of Mineral Resources, Department of Natural Resources. All bearings, distances and coordinates are based on Louisiana Coordinate System of 1927, (North or South Zone), where applicable.

NOTE: The above description of the Tract nominated for lease has been provided and corrected, where required, exclusively by the nomination party. Any mineral lease selected from this Tract and awarded by the Louisiana State Mineral Board shall be without warranty of any kind, either express, implied, or statutory, including, but not limited to, the implied warranties of merchantability and fitness for a particular purpose. Should the mineral lease awarded by the Louisiana State Mineral Board be subsequently modified, cancelled or abrogated due to the existence of conflicting leases, operating agreements, private claims or other future obligations or conditions which may affect all or any portion of the leased Tract, it shall not relieve the Lessee of the obligation to pay any bonus due thereon to the Louisiana State Mineral Board, nor shall the Louisiana State Mineral Board be obligated to refund any consideration paid by the Lessor prior to such modification, cancellation, or abrogation, including, but not limited to, bonuses, rentals and royalties.

NOTE: The State of Louisiana does hereby reserve, and this lease shall be subject to, the imprescriptible right of surface use in the nature of a servitude in favor of the Department of Natural Resources, including its Offices and Commissions, for the sole purpose of implementing, constructing, servicing and maintaining approved coastal zone management and/or restoration projects. Utilization of any and all rights derived under this lease by the mineral lessee, its agents, successors or assigns,

shall not interfere with nor hinder the reasonable surface use by the Department of Natural Resources, its Offices or Commissions, as herein above reserved.

Applicant: Robert A. Schroeder, Inc.

Bidder	Cash Payment	Price/Acre	Rental	Oil	Gas	Other



SL 17247

BLOCK MP0021

MAIN PASS AREA, REVISED

SL 16931

SL 16932

BLOCK MP0022

P.O.B.
X=2,620,600.00
Y=322,330.00

SL 16933

BLOCK MP0026

PLAQUEMINES PARISH



TRACT 36382 - Jefferson Parish, Louisiana

All of the lands now or formerly constituting the beds and bottoms of all water bodies of every nature and description the title of which vests in the State of Louisiana, together with all islands arising therein and other lands formed by accretion or by reliction, where allowed by law, excepting tax adjudicated lands, and not presently under mineral lease on June 9, 2004, situated in Jefferson Parish, Louisiana, and more particularly described as follows: Beginning at a point having Coordinates of X = 2,423,008.88 and Y = 296,000.00; thence East 7,491.12 feet to a point having Coordinates of X = 2,430,500.00 and Y = 296,000.00; thence South 2,760.56 feet to a point on the North Line of State Lease No. 16006, as amended, having Coordinates of X = 2,430,500.00 and Y = 293,239.44; thence along the boundaries of said State Lease No. 16006, State Lease No. 16007, as amended, and State Lease No. 15858, as amended, the following: North 68 degrees 32 minutes 33 seconds West 1,261.67 feet, South 09 degrees 48 minutes 09 seconds East 1,251.33 feet to a point having Coordinates X = 2,429,538.82 and Y = 292,467.91, along a curve having radius of 16,210.00 feet, a center of X = 2,413,538.83 and Y = 289,867.09 to a point having Coordinates of X = 2,429,667.06 and Y = 291,493.18, along a curve having a radius of 6,850.00 feet, a center of X = 2,436,504.25 and Y = 291,911.97 to a point having Coordinates of X = 2,429,833.47 and Y = 290,355.28, along a curve having a radius of 6,740.00 feet, a center of X = 2,423,269.81 and Y = 288,823.64 to a point having Coordinates of X = 2,429,925.34 and Y = 289,887.38, along a curve having a radius of 1,760.00 feet, a center of X = 2,429,853.93 and Y = 291,645.93 to a point on the South boundary of said State Lease No. 15858 having Coordinates of X = 2,430,500.00 and Y = 290,008.80, thence South 4,611.65 feet to a point on the West boundary line of State Lease No. 18046 having Coordinates of X = 2,430,500.00 and Y = 285,397.15; thence along said boundary line of said State Lease No. 10846 South 2,520.85 feet to a point having Coordinates X = 2,430,500.00 and Y = 282,876.29; thence South 2,476.29 feet to the Northwest corner of State Lease No. 18048 having Coordinates of X = 2,430,500.00 and Y = 280,400.00; thence along said West boundary of said State Lease No. 18048 South 2,524.63 feet to its Southwest corner having Coordinates X = 2,430,500.00 Y = 277,875.60; thence West 3,229.13 feet to the Northeast corner of State Lease No. 15823, as amended, also being the Southeast corner of State Lease No. 15822, as amended, having Coordinates of X = 2,427,270.87 and Y = 277,875.60, thence North 3,966.54 feet on the East line of said State Lease No. 15822 to its Northeast corner having Coordinates of X = 2,427,270.87 and Y = 281,842.15, thence West 4,261.98 feet on the North line of said State Lease No. 15822 to its Northwest corner having Coordinates of X = 2,423,008.89 and Y = 281,842.15, thence North 14,157.85 feet to the point of beginning, containing approximately **1,640 acres**, all as more particularly outlined on a plat on file in the Office of Mineral Resources, Department of Natural Resources. All bearings, distances and coordinates are based on Louisiana Coordinate System of 1927, (North or South Zone), where applicable.

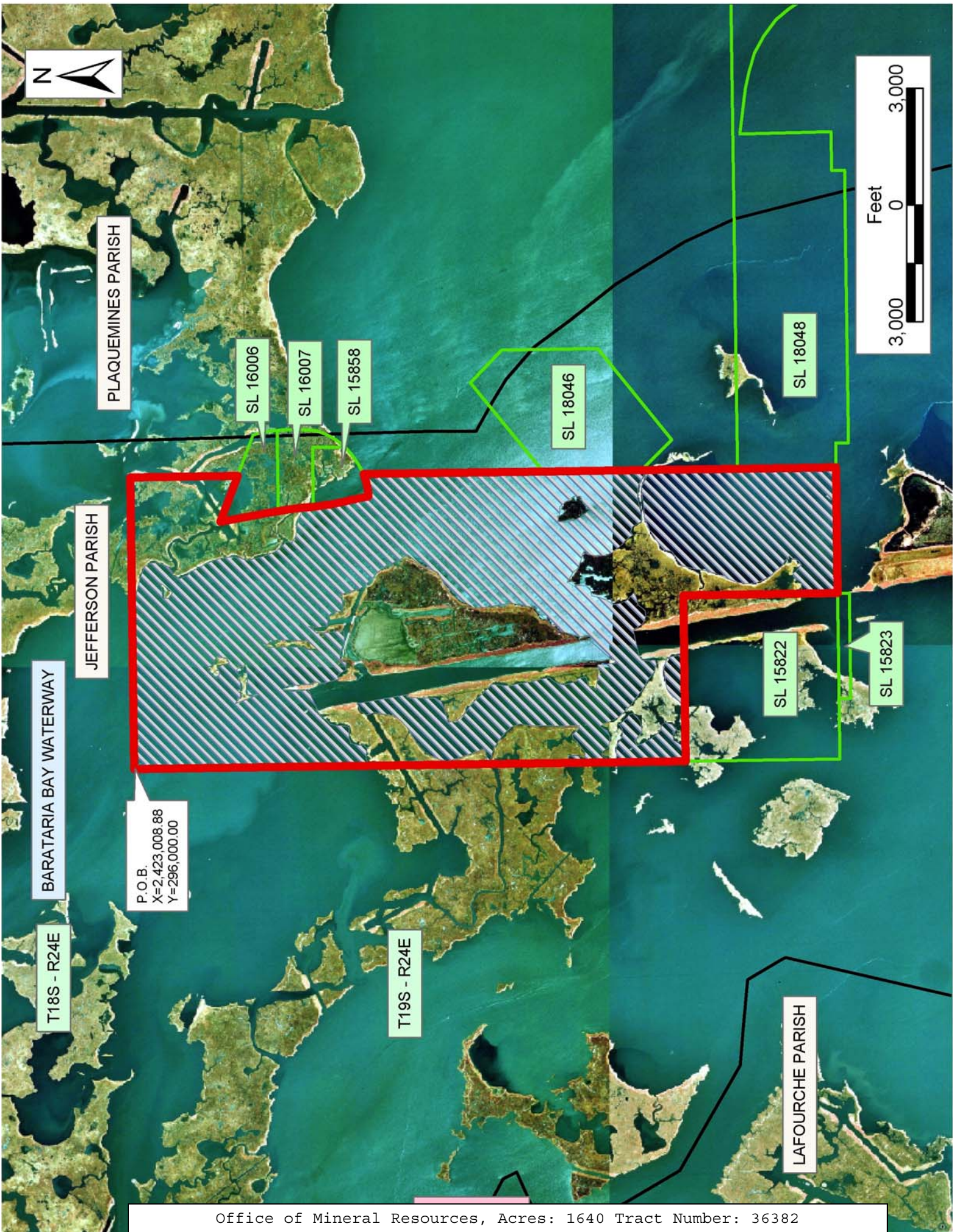
NOTE: The above description of the Tract nominated for lease has been provided and corrected, where required, exclusively by the nomination party. Any mineral lease selected from this Tract and awarded by the Louisiana State Mineral Board shall be without warranty of any kind, either express, implied, or statutory, including, but not limited to, the implied warranties of merchantability and fitness for a particular purpose. Should the mineral lease awarded by the Louisiana State Mineral Board be subsequently modified, cancelled or abrogated due to the existence of conflicting leases, operating agreements, private claims or other future obligations or conditions which may affect all or any portion of the leased Tract, it shall not relieve the Lessee of the obligation to pay any bonus due thereon to the Louisiana State Mineral Board, nor shall the Louisiana State Mineral Board be obligated to refund any consideration paid by the Lessor prior to such modification, cancellation, or abrogation, including, but not limited to, bonuses, rentals and royalties.

NOTE: The State of Louisiana does hereby reserve, and this lease shall be subject to, the imprescriptible right of surface use in the nature of a servitude in favor of the Department of Natural Resources, including its Offices and Commissions, for the sole purpose of implementing, constructing, servicing and maintaining approved coastal zone management and/or restoration projects. Utilization of any and all rights derived under this lease by the mineral lessee, its agents, successors or assigns, shall not interfere with nor hinder the reasonable surface use by the Department of Natural Resources, its Offices or Commissions, as herein above reserved.

NOTE: The Department of Wildlife and Fisheries has designated certain areas in the coastal waters of the State of Louisiana as Oyster Seed Bed Areas. The exact location of those Seed Bed Areas must be obtained from the Department of Wildlife and Fisheries and any work done under a mineral lease from the State of Louisiana may necessarily be conducted in conformity with the rules and regulations promulgated by the said Department of Wildlife and Fisheries for Oyster Seed Bed Areas.

Applicant: Branton Properties

Bidder	Cash Payment	Price/Acre	Rental	Oil	Gas	Other



P.O.B.
X=2,423,008.88
Y=296,000.00

BARATARIA BAY WATERWAY

T18S - R24E

JEFFERSON PARISH

PLAQUEMINES PARISH

T19S - R24E

LAFOURCHE PARISH

TRACT 36383 - Jefferson and Plaquemines Parishes, Louisiana

All of the lands now or formerly constituting the beds and bottoms of all water bodies of every nature and description the title of which vests in the State of Louisiana, together with all islands arising therein and other lands formed by accretion or by reliction, where allowed by law, excepting tax adjudicated lands, and not presently under mineral lease on June 9, 2004, situated in Jefferson and Plaquemines Parishes, Louisiana, and more particularly described as follows: Beginning at a point having Coordinates of X = 2,430,500.00 and Y = 288,730.00; thence North 1,278.80 feet to a point on the South Line of State Lease No. 15858, as amended, having Coordinates of X = 2,430,500.00 and Y = 290,008.80; thence along the boundaries of said State Lease No. 15858, State Lease No. 16007, as amended, and State Lease No. 16006, as amended the following: along a curve having a radius of 1,760.00 feet, a center of X = 2,429,853.93 and Y = 291,645.93 to a point having Coordinates of X = 2,430,917.06 and Y = 290,243.31, along a curve having a radius of 1,686.00 feet, a center of X = 2,430,000.21 and Y = 291,658.22 to a point having Coordinates of X = 2,431,623.62 and Y = 291,203.10, along a curve having a radius of 4,000.00 feet, a center of X = 2,427,673.35 and Y = 291,831.91 to a point having Coordinates of X = 2,431,547.41 and Y = 292,827.75 and North 68 degrees 32 minutes 33 seconds West 1,125.41 feet, being a point on the North Line of said State Lease No. 16006, having Coordinates of X = 2,430,500.00 and Y = 293,239.44; thence North 2,760.56 feet to a point having Coordinates of X = 2,430,500.00 and Y = 296,000.00; thence East 4,197.68 feet to a point on the West Line of State Lease No. 13407, as amended having Coordinates of X = 2,434,697.68 and Y = 296,000.00; thence along the boundary of said State Lease No. 13407 the following: along a curve having a radius of 1,400.00 feet, a center of X = 2,435,752.43 and Y = 295,079.40 to a point having Coordinates of X = 2,434,567.49 and Y = 295,825.00, South 30 degrees 11 minutes 16 seconds West 431.28 feet, North 63 degrees 00 minutes 00 seconds West 876.05 feet, South 27 degrees 00 minutes 00 seconds West 1,253.00 feet, South 63 degrees 00 minutes 00 seconds East 546.00 feet to a point having Coordinates of X = 2,433,487.70 and Y = 294,485.63, along a curve having a radius of 5,000.00 feet, a center of X = 2,430,272.08 and Y = 298,314.44 to a point having Coordinates of X = 2,432,620.00 and Y = 293,900.00, South 72 degrees 32 minutes 30 seconds West 963.77 feet, South 1,400.00 feet, East 1,574.75 feet, South 21 degrees 12 minutes 23 seconds East 259.04 feet, South 69 degrees 10 minutes 45 seconds East 814.07 feet to a point having Coordinates of X = 2,434,129.99 and Y = 291,680.00, along a curve having a radius of 13,000.00 feet, a center of X = 2,424,693.15 and Y = 300,621.26 to a point having Coordinates of X = 2,436,414.99 and Y = 295,000.00, North 25 degrees 51 minutes 20 seconds East 1,111.23 feet to a point on the East Line of said State Lease No. 13407 having Coordinates of X = 2,436,899.60 and Y = 296,000.00; thence East 9,193.34 feet to a point having Coordinates of X = 2,446,092.95 and Y = 296,000.00; thence South 4,507.47 feet to a point having Coordinates of X = 2,446,092.95 and Y = 291,492.53, said point being the Northwest corner of State Lease No. 11036, as amended, thence along the boundaries of said State Lease No. 11036, and State Lease No. 12721, as amended the

following: South 83 degrees 37 minutes 00 seconds West 1,866.76 feet to a point having Coordinates of X = 2,444,237.76 and Y = 291,284.98, South 06 degrees 23 minutes 00 seconds East 1,866.76 feet to a point having Coordinates of X = 2,444,445.31 and Y = 289,429.79, and North 83 degrees 37 minutes 00 seconds East 1,363.14 feet to a point on the South Line of said State Lease No. 12721 having Coordinates of X = 2,445,800.00 and Y = 289,581.35; thence South 851.35 feet to a point having Coordinates of X = 2,445,800.00 and Y = 288,730.00; thence West 15,300.00 feet to the point of beginning, containing approximately **1,112 acres**, all as more particularly outlined on a plat on file in the Office of Mineral Resources, Department of Natural Resources. All bearings, distances and coordinates are based on Louisiana Coordinate System of 1927, (North or South Zone), where applicable.

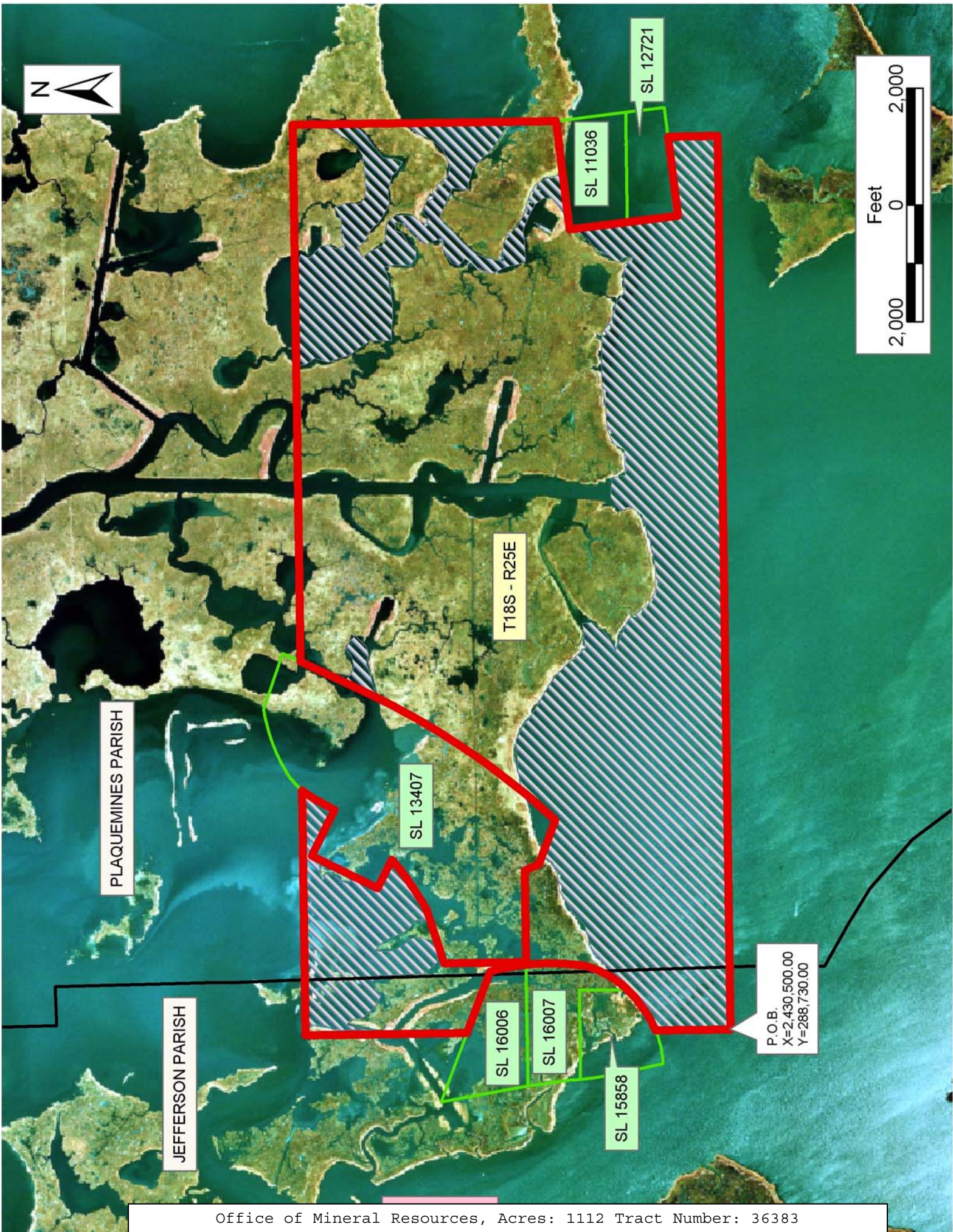
NOTE: The above description of the Tract nominated for lease has been provided and corrected, where required, exclusively by the nomination party. Any mineral lease selected from this Tract and awarded by the Louisiana State Mineral Board shall be without warranty of any kind, either express, implied, or statutory, including, but not limited to, the implied warranties of merchantability and fitness for a particular purpose. Should the mineral lease awarded by the Louisiana State Mineral Board be subsequently modified, cancelled or abrogated due to the existence of conflicting leases, operating agreements, private claims or other future obligations or conditions which may affect all or any portion of the leased Tract, it shall not relieve the Lessee of the obligation to pay any bonus due thereon to the Louisiana State Mineral Board, nor shall the Louisiana State Mineral Board be obligated to refund any consideration paid by the Lessor prior to such modification, cancellation, or abrogation, including, but not limited to, bonuses, rentals and royalties.

NOTE: The State of Louisiana does hereby reserve, and this lease shall be subject to, the imprescriptible right of surface use in the nature of a servitude in favor of the Department of Natural Resources, including its Offices and Commissions, for the sole purpose of implementing, constructing, servicing and maintaining approved coastal zone management and/or restoration projects. Utilization of any and all rights derived under this lease by the mineral lessee, its agents, successors or assigns, shall not interfere with nor hinder the reasonable surface use by the Department of Natural Resources, its Offices or Commissions, as herein above reserved.

NOTE: The Department of Wildlife and Fisheries has designated certain areas in the coastal waters of the State of Louisiana as Oyster Seed Bed Areas. The exact location of those Seed Bed Areas must be obtained from the Department of Wildlife and Fisheries and any work done under a mineral lease from the State of Louisiana may necessarily be conducted in conformity with the rules and regulations promulgated by the said Department of Wildlife and Fisheries for Oyster Seed Bed Areas.

Applicant: Branton Properties

Bidder	Cash Payment	Price/Acre	Rental	Oil	Gas	Other



TRACT 36384 - Plaquemines Parish, Louisiana

All of the lands now or formerly constituting the beds and bottoms of all water bodies of every nature and description the title of which vests in the State of Louisiana, together with all islands arising therein and other lands formed by accretion or by reliction, where allowed by law, excepting tax adjudicated lands, and not presently under mineral lease on June 9, 2004, situated in Plaquemines Parish, Louisiana, and more particularly described as follows: Beginning at a point having Coordinates of X = 2,464,280.00 and Y = 288,730.00; thence West 18,480.00 feet to a point having Coordinates of X = 2,445,800.00 and Y = 288,730.00; thence North 851.35 feet to a point on the South Line of State Lease No. 12721, as amended having Coordinates of X = 2,445,800.00 and Y = 289,581.35; thence along the boundaries of said State Lease No. 12721 and State Lease No. 11036, as amended the following: North 83 degrees 37 minutes 00 seconds East 503.61 feet, North 06 degrees 23 minutes 00 seconds West 1,866.76 feet to a point having Coordinates of X = 2,446,092.95 and Y = 291,492.53 also being the Northeast Corner of said State Lease No. 11036; thence North 4,507.47 feet to a point having Coordinates of X = 2,446,092.95 and Y = 296,000.00; thence East 18,187.05 feet to a point having Coordinates of X = 2,464,280.00 and Y = 296,000.00; thence South 3,351.65 feet a point on the North Line of State Lease No. 8512, as amended having Coordinates of X = 2,464,280.00 and Y = 292,648.35; thence along the boundary of said State Lease No. 8512 the following: North 65 degrees 05 minutes 28 seconds West 72.42 feet, North 64 degrees 16 minutes 21 seconds West 620.38 feet, North 66 degrees 23 minutes 12 seconds West 995.00 feet, North 69 degrees 33 minutes 25 seconds West 1,421.82 feet, South 28 degrees 30 minutes 38 seconds West 1513.24 feet, South 26 degrees 02 minutes 18 seconds West 644.60 feet, South 62 degrees 58 minutes 06 seconds East 3,132.26 feet, South 62 degrees 58 minutes 05 seconds East 600.57 feet, North 87 degrees 24 minutes 35 seconds East 392.30 feet, and South 85 degrees 16 minutes 00 seconds East 157.39 feet to a point having Coordinates of X = 2,464,280.00 and Y = 290,242.65, being a point on its South Line; thence South 1,512.65 feet to the point of beginning, containing approximately **2,134 acres**, all as more particularly outlined on a plat on file in the Office of Mineral Resources, Department of Natural Resources. All bearings, distances and coordinates are based on Louisiana Coordinate System of 1927, (North or South Zone), where applicable.

NOTE: The above description of the Tract nominated for lease has been provided and corrected, where required, exclusively by the nomination party. Any mineral lease selected from this Tract and awarded by the Louisiana State Mineral Board shall be without warranty of any kind, either express, implied, or statutory, including, but not limited to, the implied warranties of merchantability and fitness for a particular purpose. Should the mineral lease awarded by the Louisiana State Mineral Board be subsequently modified, cancelled or abrogated due to the existence of conflicting leases, operating agreements, private claims or other future obligations or conditions which may affect all or any portion of the leased Tract, it shall not relieve the Lessee of the obligation to

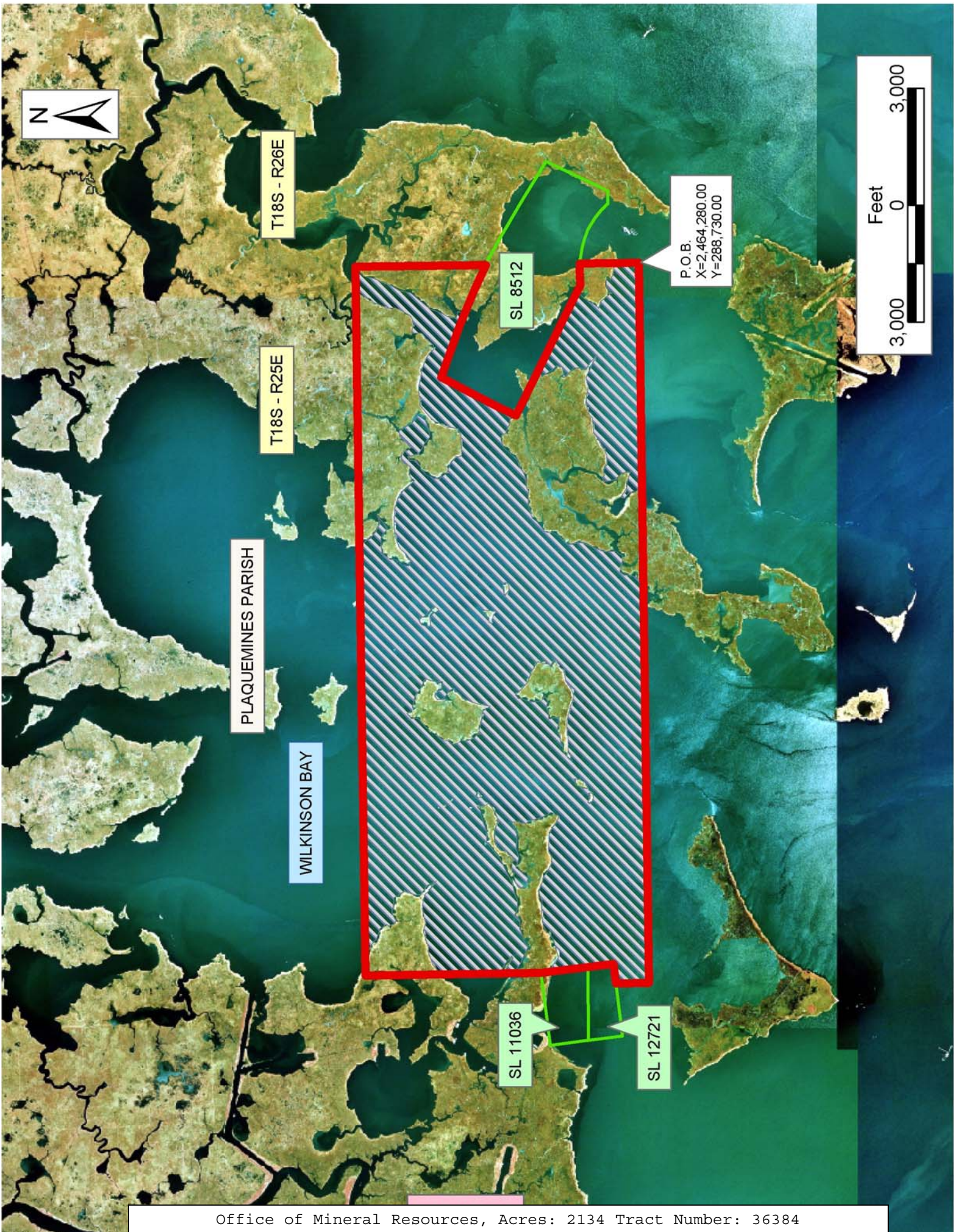
pay any bonus due thereon to the Louisiana State Mineral Board, nor shall the Louisiana State Mineral Board be obligated to refund any consideration paid by the Lessor prior to such modification, cancellation, or abrogation, including, but not limited to, bonuses, rentals and royalties.

NOTE: The State of Louisiana does hereby reserve, and this lease shall be subject to, the imprescriptible right of surface use in the nature of a servitude in favor of the Department of Natural Resources, including its Offices and Commissions, for the sole purpose of implementing, constructing, servicing and maintaining approved coastal zone management and/or restoration projects. Utilization of any and all rights derived under this lease by the mineral lessee, its agents, successors or assigns, shall not interfere with nor hinder the reasonable surface use by the Department of Natural Resources, its Offices or Commissions, as herein above reserved.

NOTE: The Department of Wildlife and Fisheries has designated certain areas in the coastal waters of the State of Louisiana as Oyster Seed Bed Areas. The exact location of those Seed Bed Areas must be obtained from the Department of Wildlife and Fisheries and any work done under a mineral lease from the State of Louisiana may necessarily be conducted in conformity with the rules and regulations promulgated by the said Department of Wildlife and Fisheries for Oyster Seed Bed Areas.

Applicant: Branton Properties

Bidder	Cash Payment	Price/Acre	Rental	Oil	Gas	Other



TRACT 36385 - Jefferson and Plaquemines Parishes, Louisiana

All of the lands now or formerly constituting the beds and bottoms of all water bodies of every nature and description the title of which vests in the State of Louisiana, together with all islands arising therein and other lands formed by accretion or by reliction, where allowed by law, excepting tax adjudicated lands, and not presently under mineral lease on June 9, 2004, situated in Jefferson and Plaquemines Parishes, Louisiana, and more particularly described as follows: Beginning at a point having Coordinates of X = 2,430,500.00 and Y = 288,730.00; thence East 18,100.00 feet to a point having Coordinates of X = 2,448,600.00 and Y = 288,730.00; thence South 5,449.91 feet to a point on the North Line of State Lease No. 17375; thence North 75 degrees 38 minutes 35 seconds West 1,238.68 feet to its Northwest corner and the Northeast corner of State Lease No. 17374 having Coordinates of X = 2,447,400.00 and Y = 283,587.24; thence along the boundary of said State Lease No. 17374 the following: North 75 degrees 38 minutes 35 seconds West 6,286.32 feet, West 2,560.00 feet, South 55 degrees 19 minutes 05 seconds West 5,447.97 feet and South 05 degrees 12 minutes 26 seconds West 1,652.82 feet to its Southwest corner also being a point on the North boundary of State Lease No. 18048 having Coordinates of X = 2,434,120.00 and Y = 280,400.00; thence along said boundary of said State Lease No. 18048 West 3,620.00 feet to its Northwest corner having Coordinates of X = 2,430,500.00 and Y = 280,400.00; thence North 2,476.29 feet to a point on the West boundary line of State Lease No. 18046 having Coordinates X = 2,430,500.00 and Y = 282,876.29; thence along said boundary of said State Lease No. 18046 the following: South 44 degrees 11 minutes 19 seconds East 1,113.31 feet, North 51 degrees 34 minutes 18 seconds East 3,015.12 feet, North 2,472.00 feet, North 46 degrees 07 minutes 04 seconds West 1,159.88 feet, and South 51 degrees 30 minutes 13 seconds West 2,941.30 feet to a point on its West boundary having Coordinates X = 2,430,500.00 and Y = 285,397.15; thence North 3,332.85 to the point of beginning, containing approximately **1,720 acres**, all as more particularly outlined on a plat on file in the Office of Mineral Resources, Department of Natural Resources. All bearings, distances and coordinates are based on Louisiana Coordinate System of 1927, (North or South Zone), where applicable.

NOTE: The above description of the Tract nominated for lease has been provided and corrected, where required, exclusively by the nomination party. Any mineral lease selected from this Tract and awarded by the Louisiana State Mineral Board shall be without warranty of any kind, either express, implied, or statutory, including, but not limited to, the implied warranties of merchantability and fitness for a particular purpose. Should the mineral lease awarded by the Louisiana State Mineral Board be subsequently modified, cancelled or abrogated due to the existence of conflicting leases, operating agreements, private claims or other future obligations or conditions which may affect all or any portion of the leased Tract, it shall not relieve the Lessee of the obligation to pay any bonus due thereon to the Louisiana State Mineral Board, nor shall the Louisiana State Mineral Board be obligated to refund any consideration

paid by the Lessor prior to such modification, cancellation, or abrogation, including, but not limited to, bonuses, rentals and royalties.

NOTE: The State of Louisiana does hereby reserve, and this lease shall be subject to, the imprescriptible right of surface use in the nature of a servitude in favor of the Department of Natural Resources, including its Offices and Commissions, for the sole purpose of implementing, constructing, servicing and maintaining approved coastal zone management and/or restoration projects. Utilization of any and all rights derived under this lease by the mineral lessee, its agents, successors or assigns, shall not interfere with nor hinder the reasonable surface use by the Department of Natural Resources, its Offices or Commissions, as herein above reserved.

NOTE: The Department of Wildlife and Fisheries has designated certain areas in the coastal waters of the State of Louisiana as Oyster Seed Bed Areas. The exact location of those Seed Bed Areas must be obtained from the Department of Wildlife and Fisheries and any work done under a mineral lease from the State of Louisiana may necessarily be conducted in conformity with the rules and regulations promulgated by the said Department of Wildlife and Fisheries for Oyster Seed Bed Areas.

Applicant: Branton Properties

Bidder	Cash Payment	Price/Acre	Rental	Oil	Gas	Other



PLAQUEMINES PARISH

JEFFERSON PARISH

P.O.B.
X=2,430,500.00
Y=288,730.00

T19S - R25E

SL 18046

SL 17374

SL 17375

SL 18048

BARATARIA BAY

TRACT 36386 - Plaquemines Parish, Louisiana

All of the lands now or formerly constituting the beds and bottoms of all water bodies of every nature and description the title of which vests in the State of Louisiana, together with all islands arising therein and other lands formed by accretion or by reliction, where allowed by law, excepting tax adjudicated lands, and not presently under mineral lease on June 9, 2004, situated in Plaquemines Parish, Louisiana, and more particularly described as follows: Beginning at a point having Coordinates of X = 2,464,280.00 and Y = 288,730.00; thence South 1,763.03 feet to a point on the North boundary of State Lease No. 15248, as amended, having Coordinates of X = 2,464,280.00 and Y = 286,966.97; thence on the North boundary of said State Lease No. 15248 the following: North 85 degrees 25 minutes 00 seconds West 39.21 feet, North 87 degrees 09 minutes 47 seconds West 241.64 feet and South 85 degrees 51 minutes 59 seconds West 119.94 feet to its Northwest corner, also being the Northeast corner of State Lease No. 15246, as amended, having Coordinates of X = 2,463,879.95 and Y = 286,973.42; thence along the boundary of said State Lease No. 15246 the following: South 85 degrees 51 minutes 59 seconds West 111.19 feet, South 84 degrees 19 minutes 37 seconds West 154.48 feet, South 76 degrees 05 minutes 34 seconds West 243.48 feet, South 71 degrees 29 minutes 57 seconds West 247.29 feet, South 70 degrees 20 minutes 49 seconds West 190.78 feet to a point on the North Line of State Lease No. 18047 having Coordinates of X = 2,462,964.81 and Y = 286,748.98; thence along the boundary of said State Lease No. 18047 the following: North 50 degrees 33 minutes 02 seconds West 1,306.54 feet, South 88 degrees 13 minutes 40 seconds West 894.72 feet, South 72 degrees 11 minutes 29 seconds West 4,001.57 feet, South 55 degrees 11 minutes 13 seconds West 4,289.56 feet, South 01 degree 50 minutes 28 seconds East 3,094.34 feet to its Southwest corner having Coordinates of X = 2,453,829.41 and Y = 280,786.00, thence along the South boundary of said State Lease No. 18047 the following: East 3,996.79 feet, North 67 degrees 52 minutes 54 seconds East 3,537.25 feet, and North 39 degrees 51 minutes 50 seconds East 1,772.30 feet to a point on the South line of State Lease No. 17376 having Coordinates of X = 2,462,239.12 and Y = 283,478.20, thence along said boundary of said State Lease No. 17376, South 61 degrees 13 minutes 59 seconds East 2,328.22 feet to a point having Coordinates of X = 2,464,280.00 and Y = 282,357.75; thence South 1,571.75 feet to a point having Coordinates of X = 2,464,280.00 and Y = 280,786.00; thence South 05 degrees 05 minutes 40 seconds West 387.54 feet to a point having Coordinates of X = 2,464,245.59 and Y = 280,399.99; thence West 10,900.29 feet to a point on the East Line of State Lease No. 17375 having Coordinates of X = 2,453,345.30 and Y = 280,399.99; thence along the boundary of said State Lease No. 17375 the following: North 35 degrees 31 minutes 47 seconds West 2,504.27 feet and North 75 degrees 38 minutes 35 seconds West 3,396.06 feet to a point on its North Line; thence North 5,449.91 feet to a point having Coordinates of X = 2,448,600.00 and Y = 288,730.00; thence East 15,680.00 feet to the point of beginning, containing approximately **1,548 acres**, all as more particularly outlined on a plat on file in the Office of Mineral Resources, Department of Natural Resources. All bearings, distances and

coordinates are based on Louisiana Coordinate System of 1927, (North or South Zone), where applicable.

NOTE: The above description of the Tract nominated for lease has been provided and corrected, where required, exclusively by the nomination party. Any mineral lease selected from this Tract and awarded by the Louisiana State Mineral Board shall be without warranty of any kind, either express, implied, or statutory, including, but not limited to, the implied warranties of merchantability and fitness for a particular purpose. Should the mineral lease awarded by the Louisiana State Mineral Board be subsequently modified, cancelled or abrogated due to the existence of conflicting leases, operating agreements, private claims or other future obligations or conditions which may affect all or any portion of the leased Tract, it shall not relieve the Lessee of the obligation to pay any bonus due thereon to the Louisiana State Mineral Board, nor shall the Louisiana State Mineral Board be obligated to refund any consideration paid by the Lessor prior to such modification, cancellation, or abrogation, including, but not limited to, bonuses, rentals and royalties.

NOTE: The State of Louisiana does hereby reserve, and this lease shall be subject to, the imprescriptible right of surface use in the nature of a servitude in favor of the Department of Natural Resources, including its Offices and Commissions, for the sole purpose of implementing, constructing, servicing and maintaining approved coastal zone management and/or restoration projects. Utilization of any and all rights derived under this lease by the mineral lessee, its agents, successors or assigns, shall not interfere with nor hinder the reasonable surface use by the Department of Natural Resources, its Offices or Commissions, as herein above reserved.

NOTE: The Department of Wildlife and Fisheries has designated certain areas in the coastal waters of the State of Louisiana as Oyster Seed Bed Areas. The exact location of those Seed Bed Areas must be obtained from the Department of Wildlife and Fisheries and any work done under a mineral lease from the State of Louisiana may necessarily be conducted in conformity with the rules and regulations promulgated by the said Department of Wildlife and Fisheries for Oyster Seed Bed Areas.

Bidder	Cash Payment	Price/Acre	Rental	Oil	Gas	Other

Applicant: Branton Properties

