

**TRACT 36367 - Portion of Block 15, Main Pass Area, Revised, Plaquemines Parish, Louisiana**

All of the lands now or formerly constituting the beds and bottoms of all water bodies of every nature and description the title of which vests in the State of Louisiana, together with all islands arising therein and other lands formed by accretion or by reliction, where allowed by law, excepting tax adjudicated lands, and not presently under mineral lease on June 9, 2004, situated in Plaquemines Parish, Louisiana, and more particularly described as follows: Beginning at a point having Coordinates of X = 2,620,600.00 and Y = 351,830.00, said point also being the Northeast corner of Block 15, Main Pass Area, Revised; thence South 3,130.26 feet on and along the East line of said Block 15, to a point having Coordinates of X = 2,620,600.00 and Y = 348,699.74, said point being on a Northern boundary of State Lease No. 17765; thence on and along the Northern and Western boundaries of said State Lease No. 17765 and on and along the Western and Southern boundaries of State Lease No. 17766 the following courses and distances, to wit: North 36 degrees 49 minutes 34 seconds West 205.21 feet to a point having Coordinates of X = 2,620,477.00 and Y = 348,864.00; South 62 degrees 29 minutes 24 seconds West 1,654.02 feet to a point having Coordinates of X = 2,619,010.00 and Y = 348,100.00; South 23 degrees 52 minutes 48 seconds East 2,816.07 feet to a point having Coordinates of X = 2,620,150.00 and Y = 345,525.00, said point being common to State Lease Nos. 17765, 17623 and 17766; South 36 degrees 05 minutes 30 seconds West 1,178.11 feet to a point having Coordinates of X = 2,619,456.00 and Y = 344,573.00; South 20 degrees 24 minutes 31 seconds East 1,864.00 feet to a point having Coordinates of X = 2,620,106.00 and Y = 342,826.00; and South 66 degrees 28 minutes 55 seconds East 538.75 feet to a point having Coordinates of X = 2,620,600.00 and Y = 342,611.02, said point being on the East line of said Block 15; thence South 5,531.02 feet on and along said East line of said Block 15, to a point having Coordinates of X = 2,620,600.00 and Y = 337,080.00, said point being the Southeast corner of said Block 15; thence West 7,375.00 feet on and along the South line of said Block 15, to a point having Coordinates of X = 2,613,225.00 and Y = 337,080.00; thence North 14,750.00 feet to a point having Coordinates of X = 2,613,225.00 and Y = 351,830.00, said point being on the North line of said Block 15; thence East 7,375.00 feet on and along said North line of said Block 15, to the point of beginning, containing approximately **2,370.70 acres**, all as more particularly outlined on a plat on file in the Office of Mineral Resources, Department of Natural Resources. All bearings, distances and coordinates are based on Louisiana Coordinate System of 1927, (North or South Zone), where applicable.

NOTE: The above description of the Tract nominated for lease has been provided and corrected, where required, exclusively by the nomination party. Any mineral lease selected from this Tract and awarded by the Louisiana State Mineral Board shall be without warranty of any kind, either express, implied, or statutory, including, but not limited to, the implied warranties of merchantability and fitness for a particular

purpose. Should the mineral lease awarded by the Louisiana State Mineral Board be subsequently modified, cancelled or abrogated due to the existence of conflicting leases, operating agreements, private claims or other future obligations or conditions which may affect all or any portion of the leased Tract, it shall not relieve the Lessee of the obligation to pay any bonus due thereon to the Louisiana State Mineral Board, nor shall the Louisiana State Mineral Board be obligated to refund any consideration paid by the Lessor prior to such modification, cancellation, or abrogation, including, but not limited to, bonuses, rentals and royalties.

NOTE: The State of Louisiana does hereby reserve, and this lease shall be subject to, the imprescriptible right of surface use in the nature of a servitude in favor of the Department of Natural Resources, including its Offices and Commissions, for the sole purpose of implementing, constructing, servicing and maintaining approved coastal zone management and/or restoration projects. Utilization of any and all rights derived under this lease by the mineral lessee, its agents, successors or assigns, shall not interfere with nor hinder the reasonable surface use by the Department of Natural Resources, its Offices or Commissions, as herein above reserved.

Applicant: Robert A. Schroeder, Inc.

Bidder	Cash Payment	Price/Acre	Rental	Oil	Gas	Other



P.O.B.  
X=2,620,600.00  
Y=351,830.00

BLOCK MP0016

SL 17765

SL 17762

SL 17621

SL 17624

SL 17763

SL 17766

SL 17764

MAIN PASS AREA, REVISED

SL 16172

ST BERNARD PARISH

BLOCK MP0015

PLAQUEMINES PARISH

BLOCK MP0022



**TRACT 36368 - Portion of Block 16, Main Pass Area, Revised, Plaquemines Parish, Louisiana**

All of the lands now or formerly constituting the beds and bottoms of all water bodies of every nature and description the title of which vests in the State of Louisiana, together with all islands arising therein and other lands formed by accretion or by reliction, where allowed by law, excepting tax adjudicated lands, and not presently under mineral lease on June 9, 2004, situated in Plaquemines Parish, Louisiana, and more particularly described as follows: Beginning at a point having Coordinates of X = 2,620,600.00 and Y = 351,830.00, said point being the Northwest corner of Block 16, Main Pass Area, Revised; thence East 14,750.00 feet on and along the North line of said Block 16, to a point having Coordinates of X = 2,635,350.00 and Y = 351,830.00, said point being the Northeast corner of said Block 16; thence South 7,300.00 feet on and along the East line of said Block 16, to a point having Coordinates of X = 2,635,350.00 and Y = 344,530.00; thence West 12,235.00 feet to a point having Coordinates of X = 2,623,115.00 and Y = 344,530.00, said point being common to State Lease Nos. 17621 and 17763; thence on and along an Eastern boundary of said State Lease No. 17621 and on and along a Northeastern boundary of State Lease No. 17762 the following courses and distances, to wit: North 25 degrees 31 minutes 58 seconds West 2,482.44 feet to a point having Coordinates of X = 2,622,045.00 and Y = 346,770.00; and North 36 degrees 49 minutes 34 seconds West 2,410.79 feet to a point having Coordinates of X = 2,620,600.00 and Y = 348,699.74, said point being on the West line of said Block 16; thence North 3,130.26 feet on and along said West line of said Block 16, to the point of beginning, **LESS AND EXCEPT** all of State Lease No. 17622, more particularly described as follows, to wit: Beginning at a point having Coordinates of X = 2,628,320.00 and Y = 351,460.00; thence South 63 degrees 26 minutes 06 seconds East 5,534.27 feet to a point having Coordinates of X = 2,633,270.00 and Y = 348,985.00; thence South 31 degrees 39 minutes 46 seconds West 2,038.41 feet to a point having Coordinates of X = 2,632,200.00 and Y = 347,250.00; thence North 76 degrees 27 minutes 05 seconds West 5,271.70 feet to a point having Coordinates of X = 2,627,075.00 and Y = 348,485.00; thence North 22 degrees 42 minutes 31 seconds East 3,225.00 feet to the point of beginning, containing 321.63 acres; containing approximately **2,016.42 acres**, all as more particularly outlined on a plat on file in the Office of Mineral Resources, Department of Natural Resources. All bearings, distances and coordinates are based on Louisiana Coordinate System of 1927, (North or South Zone), where applicable.

NOTE: The above description of the Tract nominated for lease has been provided and corrected, where required, exclusively by the nomination party. Any mineral lease selected from this Tract and awarded by the Louisiana State Mineral Board shall be without warranty of any kind, either express, implied, or statutory, including, but not limited to, the implied warranties of merchantability and fitness for a particular purpose. Should the mineral lease awarded by the Louisiana State Mineral

Board be subsequently modified, cancelled or abrogated due to the existence of conflicting leases, operating agreements, private claims or other future obligations or conditions which may affect all or any portion of the leased Tract, it shall not relieve the Lessee of the obligation to pay any bonus due thereon to the Louisiana State Mineral Board, nor shall the Louisiana State Mineral Board be obligated to refund any consideration paid by the Lessor prior to such modification, cancellation, or abrogation, including, but not limited to, bonuses, rentals and royalties.

NOTE: The State of Louisiana does hereby reserve, and this lease shall be subject to, the imprescriptible right of surface use in the nature of a servitude in favor of the Department of Natural Resources, including its Offices and Commissions, for the sole purpose of implementing, constructing, servicing and maintaining approved coastal zone management and/or restoration projects. Utilization of any and all rights derived under this lease by the mineral lessee, its agents, successors or assigns, shall not interfere with nor hinder the reasonable surface use by the Department of Natural Resources, its Offices or Commissions, as herein above reserved.

Applicant: Robert A. Schroeder, Inc.

Bidder	Cash Payment	Price/Acre	Rental	Oil	Gas	Other



BRETON SOUND AREA

BLOCK BS0017



MAIN PASS AREA, REVISED

BLOCK MP0009

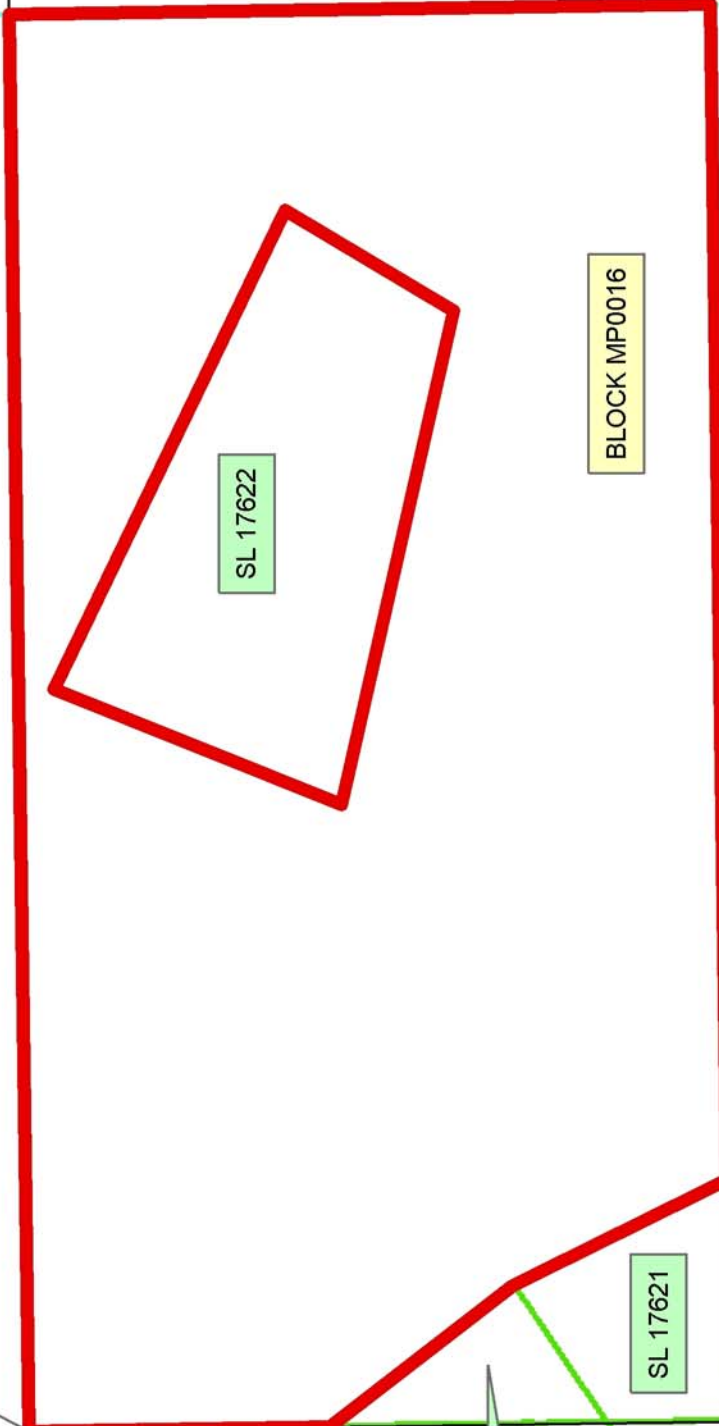
BLOCK MP0016

ST BERNARD PARISH

PLAQUEMINES PARISH

P.O.B.  
X=2,620,600.00  
Y=351,830.00

SL 16172



SL 17622

SL 17763

SL 17621

SL 17624

SL 17765

SL 17762

SL 17766

SL 17764

**TRACT 36369 - Portion of Block 14, Main Pass Area, Revised, Plaquemines Parish, Louisiana**

All of the lands now or formerly constituting the beds and bottoms of all water bodies of every nature and description the title of which vests in the State of Louisiana, together with all islands arising therein and other lands formed by accretion or by reliction, where allowed by law, excepting tax adjudicated lands, and not presently under mineral lease on June 9, 2004, situated in Plaquemines Parish, Louisiana, and more particularly described as follows: Beginning at a point having Coordinates of X = 2,605,850.00 and Y = 337,080.00, said point being the Southeast corner of said Block 14, Main Pass Area, Revised; thence West 12,860.42 feet on and along the South line of said Block 14, to a point having Coordinates of X = 2,592,989.58 and Y = 337,080.00, said point being the Southernmost Southeast corner of State Lease No. 15529, as amended; thence on and along the Eastern boundary of said State Lease No. 15529, the following courses and distances, to wit: North 49 degrees 25 minutes 43 seconds East 4,459.52 feet to a point having Coordinates of X = 2,596,377.01 and Y = 339,980.45; and North 12 degrees 52 minutes 40 seconds East 4,590.00 feet to a point having Coordinates of X = 2,597,400.00 and Y = 344,455.00 said point being the Northeast corner of State Lease No. 15529; thence East 8,450.00 feet to a point having Coordinates of X = 2,605,850.00 and Y = 344,455.00, said point being on the East line of said Block 14; thence South 7,375.00 feet on and along said East line of said Block 14, to the point of beginning, containing approximately **1,664.07 acres**, all as more particularly outlined on a plat on file in the Office of Mineral Resources, Department of Natural Resources. All bearings, distances and coordinates are based on Louisiana Coordinate System of 1927, (North or South Zone), where applicable.

NOTE: The above description of the Tract nominated for lease has been provided and corrected, where required, exclusively by the nomination party. Any mineral lease selected from this Tract and awarded by the Louisiana State Mineral Board shall be without warranty of any kind, either express, implied, or statutory, including, but not limited to, the implied warranties of merchantability and fitness for a particular purpose. Should the mineral lease awarded by the Louisiana State Mineral Board be subsequently modified, cancelled or abrogated due to the existence of conflicting leases, operating agreements, private claims or other future obligations or conditions which may affect all or any portion of the leased Tract, it shall not relieve the Lessee of the obligation to pay any bonus due thereon to the Louisiana State Mineral Board, nor shall the Louisiana State Mineral Board be obligated to refund any consideration paid by the Lessor prior to such modification, cancellation, or abrogation, including, but not limited to, bonuses, rentals and royalties.

NOTE: The State of Louisiana does hereby reserve, and this lease shall be subject to, the imprescriptible right of surface use in the nature of a servitude in favor of the Department of Natural Resources, including its Offices and Commissions, for the sole purpose of implementing,

constructing, servicing and maintaining approved coastal zone management and/or restoration projects. Utilization of any and all rights derived under this lease by the mineral lessee, its agents, successors or assigns, shall not interfere with nor hinder the reasonable surface use by the Department of Natural Resources, its Offices or Commissions, as herein above reserved.

Applicant: Robert A. Schroeder, Inc.

Bidder	Cash Payment	Price/Acre	Rental	Oil	Gas	Other





BLOCK MP0015

BLOCK MP0014

MAIN PASS AREA, REVISED

PLAQUEMINES PARISH

BLOCK MP0023

P.O.B.  
X=2,605,850.00  
Y=337,080.00



SL 15529

SL 195

**TRACT 36370 - Portion of Block 16, Main Pass Area, Revised, Plaquemines Parish, Louisiana**

All of the lands now or formerly constituting the beds and bottoms of all water bodies of every nature and description the title of which vests in the State of Louisiana, together with all islands arising therein and other lands formed by accretion or by reliction, where allowed by law, excepting tax adjudicated lands, and not presently under mineral lease on June 9, 2004, situated in Plaquemines Parish, Louisiana, and more particularly described as follows: Beginning at a point having Coordinates of X = 2,635,350.00 and Y = 337,080.00, said point being the Southeast corner of Block 16, Main Pass Area, Revised; thence West 14,750.00 feet on and along the South line of said Block 16, to a point having Coordinates of X = 2,620,600.00 and Y = 337,080.00, said point being the Southwest corner of said Block 16; thence North 5,531.02 feet on and along the West line of said Block 16, to a point having Coordinates of X = 2,620,600.00 and Y = 342,611.02, said point being on the Southern boundary of State Lease No. 17764; thence on and along said Southern boundary of said State Lease No. 17764 and on and along the Southern and Eastern boundaries of State Lease No. 17763 the following courses and distances, to wit: South 66 degrees 28 minutes 55 seconds East 1,581.36 feet to a point having Coordinates of X = 2,622,050.00 and Y = 341,980.00, said point being common to State Lease Nos. 17764, 17624 and 17763; North 64 degrees 32 minutes 31 seconds East 1,365.60 feet to a point having Coordinates of X = 2,623,283.00 and Y = 342,567.00; and North 04 degrees 53 minutes 30 seconds West 1,970.18 feet to a point having Coordinates of X = 2,623,115.00 and Y = 344,530.00, said point being common to State Lease Nos. 17763 and 17621; thence East 12,235.00 feet to a point having Coordinates of X = 2,635,350.00 and Y = 344,530.00, said point being on the East line of said Block 16; thence South 7,450.00 feet on and along said East line of said Block 16, to the point of beginning, containing approximately **2,388.20 acres**, all as more particularly outlined on a plat on file in the Office of Mineral Resources, Department of Natural Resources. All bearings, distances and coordinates are based on Louisiana Coordinate System of 1927, (North or South Zone), where applicable.

NOTE: The above description of the Tract nominated for lease has been provided and corrected, where required, exclusively by the nomination party. Any mineral lease selected from this Tract and awarded by the Louisiana State Mineral Board shall be without warranty of any kind, either express, implied, or statutory, including, but not limited to, the implied warranties of merchantability and fitness for a particular purpose. Should the mineral lease awarded by the Louisiana State Mineral Board be subsequently modified, cancelled or abrogated due to the existence of conflicting leases, operating agreements, private claims or other future obligations or conditions which may affect all or any portion of the leased Tract, it shall not relieve the Lessee of the obligation to pay any bonus due thereon to the Louisiana State Mineral Board, nor shall the Louisiana State Mineral Board be obligated to refund any consideration

paid by the Lessor prior to such modification, cancellation, or abrogation, including, but not limited to, bonuses, rentals and royalties.

NOTE: The State of Louisiana does hereby reserve, and this lease shall be subject to, the imprescriptible right of surface use in the nature of a servitude in favor of the Department of Natural Resources, including its Offices and Commissions, for the sole purpose of implementing, constructing, servicing and maintaining approved coastal zone management and/or restoration projects. Utilization of any and all rights derived under this lease by the mineral lessee, its agents, successors or assigns, shall not interfere with nor hinder the reasonable surface use by the Department of Natural Resources, its Offices or Commissions, as herein above reserved.

Applicant: Robert A. Schroeder, Inc.

Bidder	Cash Payment	Price/Acre	Rental	Oil	Gas	Other



BRETON  
SOUND  
AREA

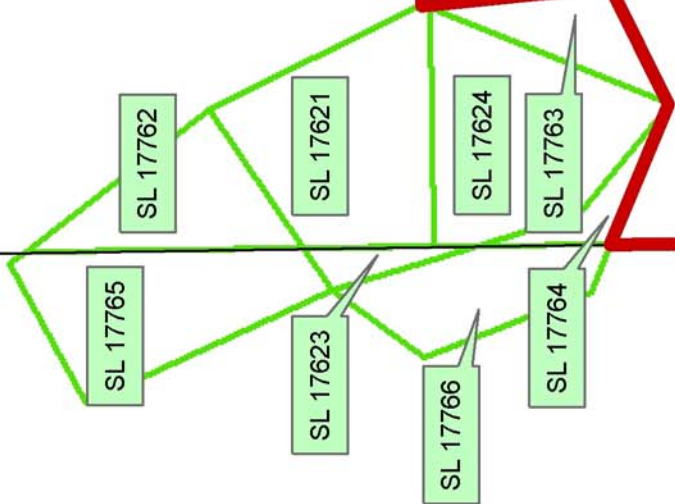
MAIN PASS AREA, REVISED

PLAQUEMINES PARISH

BLOCK MP0016

BLOCK MP0021

P.O.B.  
X=2,635,350.00  
Y=337,080.00



**TRACT 36371 - Portion of Block 22, Main Pass Area, Revised, Plaquemines Parish, Louisiana**

All of the lands now or formerly constituting the beds and bottoms of all water bodies of every nature and description the title of which vests in the State of Louisiana, together with all islands arising therein and other lands formed by accretion or by reliction, where allowed by law, excepting tax adjudicated lands, and not presently under mineral lease on June 9, 2004, situated in Plaquemines Parish, Louisiana, and more particularly described as follows: Beginning at a point having Coordinates of X = 2,605,850.00 and Y = 337,080.00, said point also being the Northwest corner of Block 22, Main Pass Area, Revised; thence East 14,750.00 feet on and along the North line of said Block 22, to a point having Coordinates of X = 2,620,600.00 and Y = 337,080.00, said point being the Northeast corner of said Block 22; thence South 7,375.00 feet on and along the East line of said Block 22, to a point having Coordinates of X = 2,620,600.00 and Y = 329,705.00; thence West 14,750.00 feet to a point having Coordinates of X = 2,605,850.00 and Y = 329,705.00, said point being on the West line of said Block 22; thence North 7,375.00 feet on and along said West line of said Block 22, to the point of beginning, containing approximately **2,497.27 acres**, all as more particularly outlined on a plat on file in the Office of Mineral Resources, Department of Natural Resources. All bearings, distances and coordinates are based on Louisiana Coordinate System of 1927, (North or South Zone), where applicable.

NOTE: The above description of the Tract nominated for lease has been provided and corrected, where required, exclusively by the nomination party. Any mineral lease selected from this Tract and awarded by the Louisiana State Mineral Board shall be without warranty of any kind, either express, implied, or statutory, including, but not limited to, the implied warranties of merchantability and fitness for a particular purpose. Should the mineral lease awarded by the Louisiana State Mineral Board be subsequently modified, cancelled or abrogated due to the existence of conflicting leases, operating agreements, private claims or other future obligations or conditions which may affect all or any portion of the leased Tract, it shall not relieve the Lessee of the obligation to pay any bonus due thereon to the Louisiana State Mineral Board, nor shall the Louisiana State Mineral Board be obligated to refund any consideration paid by the Lessor prior to such modification, cancellation, or abrogation, including, but not limited to, bonuses, rentals and royalties.

NOTE: The State of Louisiana does hereby reserve, and this lease shall be subject to, the imprescriptible right of surface use in the nature of a servitude in favor of the Department of Natural Resources, including its Offices and Commissions, for the sole purpose of implementing, constructing, servicing and maintaining approved coastal zone management and/or restoration projects. Utilization of any and all rights derived under this lease by the mineral lessee, its agents, successors or assigns, shall not interfere with nor hinder the reasonable surface use by the

Department of Natural Resources, its Offices or Commissions, as herein above reserved.

Applicant: Robert A. Schroeder, Inc.

Bidder	Cash Payment	Price/Acre	Rental	Oil	Gas	Other



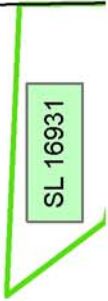
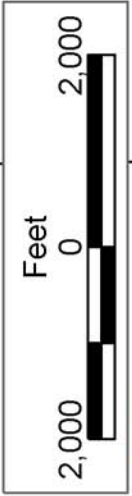
BLOCK MP0015

PLAQUEMINES PARISH

P.O.B.  
X=2,605,850.00  
Y=337,080.00

MAIN PASS AREA, REVISED

BLOCK MP0022



**TRACT 36372 - Portion of Block 21, Main Pass Area, Revised, Plaquemines Parish, Louisiana**

All of the lands now or formerly constituting the beds and bottoms of all water bodies of every nature and description the title of which vests in the State of Louisiana, together with all islands arising therein and other lands formed by accretion or by reliction, where allowed by law, excepting tax adjudicated lands, and not presently under mineral lease on June 9, 2004, situated in Plaquemines Parish, Louisiana, and more particularly described as follows: Beginning at a point having Coordinates of X = 2,620,600.00 and Y = 337,080.00, said point also being the Northwest corner of Block 21, Main Pass Area, Revised; thence East 7,375.00 feet on and along the North line of said Block 21, to a point having Coordinates of X = 2,627,975.00 and Y = 337,080.00; thence South 6,414.00 feet to a point having Coordinates of X = 2,627,975.00 and Y = 330,666.00, said point being the Easternmost Northeast corner of State Lease No. 17247; thence on and along the Northern and Western boundaries of said State Lease No. 17247 the following courses and distances, to wit: West 875.00 feet to a point having Coordinates of X = 2,627,100.00 and Y = 330,666.00; North 19 degrees 25 minutes 08 seconds West 3,609.32 feet to a point having Coordinates of X = 2,625,900.00 and Y = 334,070.00, said point being the Northernmost Northeast corner of said State Lease No. 17247; West 3,180.00 feet to a point having Coordinates of X = 2,622,720.00 and Y = 334,070.00, said point being the Northwest corner of said State Lease No. 17247; South 4,800.00 feet to a point having Coordinates of X = 2,622,720.00 and Y = 329,270.00; and South 24 degrees 23 minutes 24 seconds East 4,572.03 feet to a point having Coordinates of X = 2,624,608.00 and Y = 325,106.00, said point being the Southwest corner of said State Lease No. 17247, said point also being the Northeast corner of State Lease No. 16932, thence North 86 degrees 41 minutes 52 seconds West 4,014.67 feet on and along the Northern boundary of said State Lease No. 16932 to a point having Coordinates of X = 2,620,600.00 and Y = 325,337.25, said point being on the West line of said Block 21; thence North 11,742.75 feet on and along said West line of said Block 21, to the point of beginning, containing approximately **1,140.74 acres**, all as more particularly outlined on a plat on file in the Office of Mineral Resources, Department of Natural Resources. All bearings, distances and coordinates are based on Louisiana Coordinate System of 1927, (North or South Zone), where applicable.

NOTE: The above description of the Tract nominated for lease has been provided and corrected, where required, exclusively by the nomination party. Any mineral lease selected from this Tract and awarded by the Louisiana State Mineral Board shall be without warranty of any kind, either express, implied, or statutory, including, but not limited to, the implied warranties of merchantability and fitness for a particular purpose. Should the mineral lease awarded by the Louisiana State Mineral Board be subsequently modified, cancelled or abrogated due to the existence of conflicting leases, operating agreements, private claims or other future obligations or conditions which may affect all or any portion



of the leased Tract, it shall not relieve the Lessee of the obligation to pay any bonus due thereon to the Louisiana State Mineral Board, nor shall the Louisiana State Mineral Board be obligated to refund any consideration paid by the Lessor prior to such modification, cancellation, or abrogation, including, but not limited to, bonuses, rentals and royalties.

NOTE: The State of Louisiana does hereby reserve, and this lease shall be subject to, the imprescriptible right of surface use in the nature of a servitude in favor of the Department of Natural Resources, including its Offices and Commissions, for the sole purpose of implementing, constructing, servicing and maintaining approved coastal zone management and/or restoration projects. Utilization of any and all rights derived under this lease by the mineral lessee, its agents, successors or assigns, shall not interfere with nor hinder the reasonable surface use by the Department of Natural Resources, its Offices or Commissions, as herein above reserved.

Applicant: Robert A. Schroeder, Inc.

Bidder	Cash Payment	Price/Acre	Rental	Oil	Gas	Other

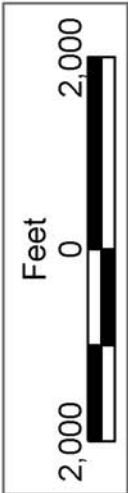


PLAQUEMINES PARISH

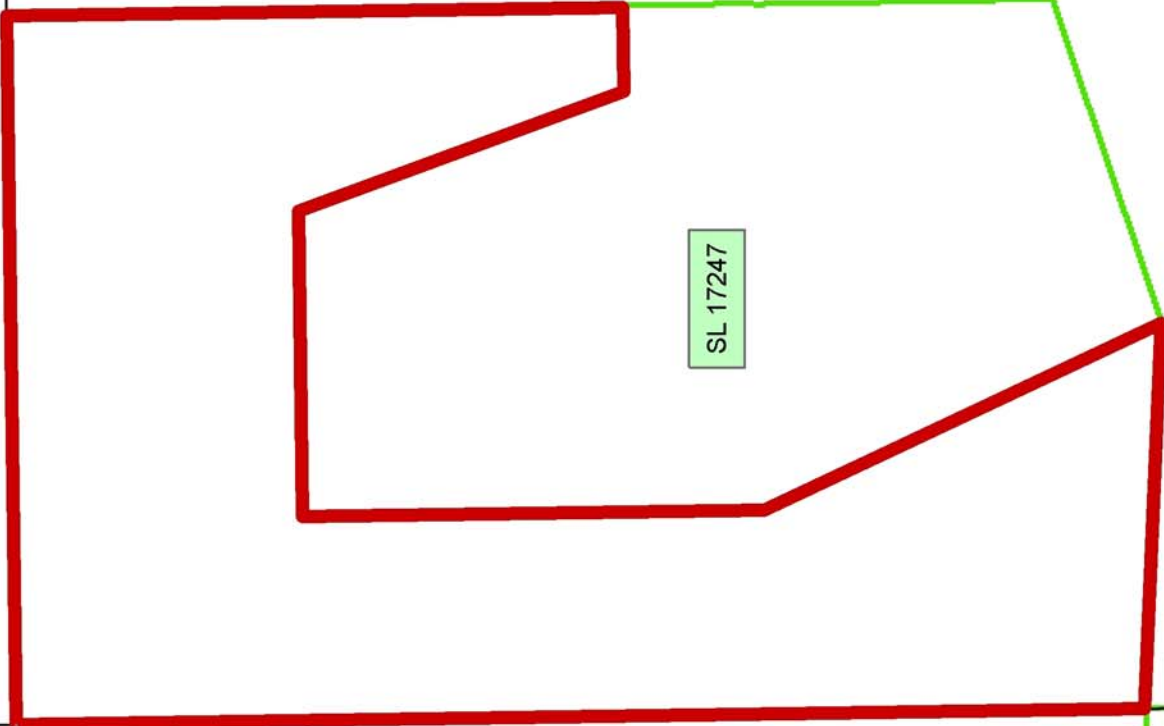
BLOCK MP0021

SL 4708

SL 15536



MAIN PASS AREA, REVISED



SL 17247

SL 16932

SL 16931

P.O.B.  
X=2,620,600.00  
Y=337,080.00

BLOCK MP0022

**TRACT 36373 - Portion of Block 21, Main Pass Area, Revised, Plaquemines Parish, Louisiana**

All of the lands now or formerly constituting the beds and bottoms of all water bodies of every nature and description the title of which vests in the State of Louisiana, together with all islands arising therein and other lands formed by accretion or by reliction, where allowed by law, excepting tax adjudicated lands, and not presently under mineral lease on June 9, 2004, situated in Plaquemines Parish, Louisiana, and more particularly described as follows: Beginning at a point having Coordinates of X = 2,635,350.00 and Y = 337,080.00, said point being the Northeast corner of Block 21, Main Pass Area, Revised; thence South 1,900.00 feet on and along the East line of said Block 21, to a point having Coordinates of X = 2,635,350.00 and Y = 335,180.00, said point being on a Northern boundary of State Lease No. 4708, as amended; thence on and along the Northern and Western boundaries of said State Lease No. 4708, the following courses and distances, to wit: South 68 degrees 11 minutes 55 seconds West 2,154.07 feet to a point having Coordinates of X = 2,633,350.00 and Y = 334,380.00; South 63 degrees 26 minutes 06 seconds West 1,118.03 feet to a point having Coordinates of X = 2,632,350.00 and Y = 333,880.00; South 57 degrees 59 minutes 41 seconds West 943.40 feet to a point having Coordinates of X = 2,631,550.00 and Y = 333,380.00; South 45 degrees 00 minutes 00 seconds West 707.11 feet to a point having Coordinates of X = 2,631,050.00 and Y = 332,880.00; South 30 degrees 57 minutes 50 seconds West 583.10 feet to a point having Coordinates of X = 2,630,750.00 and Y = 332,380.00; South 21 degrees 48 minutes 05 seconds West 538.52 feet to a point having Coordinates of X = 2,630,550.00 and Y = 331,880.00; and South 366.95 feet to a point having Coordinates of X = 2,630,550.00 and Y = 331,513.05, said point being on a Northern boundary of State Lease No. 15536, as amended; thence on and along the Northern, Western, Southern and Eastern boundaries of said State Lease No. 15536, the following courses and distances, to wit: West 1,673.00 feet to a point having Coordinates of X = 2,628,877.00 and Y = 331,513.05; South 3,835.05 feet to a point having Coordinates of X = 2,628,877.00 and Y = 327,678.00; East 3,591.00 feet to a point having Coordinates of X = 2,632,468.00 and Y = 327,678.00; and North 13 degrees 38 minutes 58 seconds West 2,188.40 feet to a point having Coordinates of X = 2,631,951.58 and Y = 329,804.60, said point being on a Southern boundary of said State Lease No. 4708; thence on and along said Southern boundary of said State Lease No. 4708, the following courses and distances, to wit: South 75 degrees 57 minutes 50 seconds East 513.76 feet to a point having Coordinates of X = 2,632,450.00 and Y = 329,680.00; East 500.00 feet to a point having Coordinates of X = 2,632,950.00 and Y = 329,680.00; and North 85 degrees 14 minutes 11 seconds East 2,408.32 feet to a point having Coordinates of X = 2,635,350.00 and Y = 329,880.00, said point being on said East line of said Block 21; thence South 7,550.00 feet on and along said East line of said Block 21, to a point having Coordinates of X = 2,635,350.00 and Y = 322,330.00, said point being on the Southeast corner of said Block 21; thence West 7,375.00 feet on and along said South line of said Block 21, to a point having Coordinates of X = 2,627,975.00 and Y = 322,330.00;

thence North 3,871.86 feet to a point having Coordinates of X = 2,627,975.00 and Y = 326,201.86, said point being the Southeast corner of State Lease No. 17247; thence North 4,464.14 feet on and along an Eastern boundary of said State Lease No. 17247 to a point having Coordinates of X = 2,627,975.00 and Y = 330,666.00, said point being the Easternmost Northeast corner of said State Lease No. 17247; thence North 6,414.00 feet to a point having Coordinates of X = 2,627,975.00 and Y = 337,080.00, said point being on the North line of said Block 21; thence East 7,375.00 feet on and along said North line of said Block 21, to the point of beginning, containing approximately **1,799.16 acres**, all as more particularly outlined on a plat on file in the Office of Mineral Resources, Department of Natural Resources. All bearings, distances and coordinates are based on Louisiana Coordinate System of 1927, (North or South Zone), where applicable.

NOTE: The above description of the Tract nominated for lease has been provided and corrected, where required, exclusively by the nomination party. Any mineral lease selected from this Tract and awarded by the Louisiana State Mineral Board shall be without warranty of any kind, either express, implied, or statutory, including, but not limited to, the implied warranties of merchantability and fitness for a particular purpose. Should the mineral lease awarded by the Louisiana State Mineral Board be subsequently modified, cancelled or abrogated due to the existence of conflicting leases, operating agreements, private claims or other future obligations or conditions which may affect all or any portion of the leased Tract, it shall not relieve the Lessee of the obligation to pay any bonus due thereon to the Louisiana State Mineral Board, nor shall the Louisiana State Mineral Board be obligated to refund any consideration paid by the Lessor prior to such modification, cancellation, or abrogation, including, but not limited to, bonuses, rentals and royalties.

NOTE: The State of Louisiana does hereby reserve, and this lease shall be subject to, the imprescriptible right of surface use in the nature of a servitude in favor of the Department of Natural Resources, including its Offices and Commissions, for the sole purpose of implementing, constructing, servicing and maintaining approved coastal zone management and/or restoration projects. Utilization of any and all rights derived under this lease by the mineral lessee, its agents, successors or assigns, shall not interfere with nor hinder the reasonable surface use by the Department of Natural Resources, its Offices or Commissions, as herein above reserved.

Applicant: Robert A. Schroeder, Inc.

Bidder	Cash Payment	Price/Acre	Rental	Oil	Gas	Other



BRETON SOUND AREA

P.O.B.  
X=2,635,350.00  
Y=337,080.00

BLOCK BS0032

SL 1227

PLAQUEMINES PARISH

MAIN PASS AREA, REVISED

SL 4708

SL 15536

BLOCK MP0021

SL 17247

SL 16932

SL 16933

SL 16931



**TRACT 36374 - Portion of Block 32, Breton Sound Area, Plaquemines Parish, Louisiana**

All of the lands now or formerly constituting the beds and bottoms of all water bodies of every nature and description the title of which vests in the State of Louisiana, together with all islands arising therein and other lands formed by accretion or by reliction, where allowed by law, excepting tax adjudicated lands, and not presently under mineral lease on June 9, 2004, situated in Plaquemines Parish, Louisiana, and more particularly described as follows: Beginning at a point having Coordinates of X = 2,635,350.00 and Y = 337,080.00, said point also being the Northwest corner of Block 32, Breton Sound Area, thence East 4,000.00 feet on and along the North line of said Block 32, to a point having Coordinates of X = 2,639,350.00 and Y = 337,080.00, said point being the Easternmost Northwest corner of State Lease No. 1227, as amended; thence on and along the Western and Northern boundaries of said State Lease No. 1227, the following courses and distances, to wit: South 3,000.00 feet to a point having Coordinates of X = 2,639,350.00 and Y = 334,080.00; and West 4,000.00 feet to a point having Coordinates of X = 2,635,350.00 and Y = 334,080.00, said point being the Westernmost Northwest corner of said State Lease No. 1227, said point also being on the West line of said Block 32, thence North 3,000.00 feet on and along said West line of said Block 32, to the point of beginning, containing approximately **275.48 acres**, all as more particularly outlined on a plat on file in the Office of Mineral Resources, Department of Natural Resources. All bearings, distances and coordinates are based on Louisiana Coordinate System of 1927, (North or South Zone), where applicable.

NOTE: The above description of the Tract nominated for lease has been provided and corrected, where required, exclusively by the nomination party. Any mineral lease selected from this Tract and awarded by the Louisiana State Mineral Board shall be without warranty of any kind, either express, implied, or statutory, including, but not limited to, the implied warranties of merchantability and fitness for a particular purpose. Should the mineral lease awarded by the Louisiana State Mineral Board be subsequently modified, cancelled or abrogated due to the existence of conflicting leases, operating agreements, private claims or other future obligations or conditions which may affect all or any portion of the leased Tract, it shall not relieve the Lessee of the obligation to pay any bonus due thereon to the Louisiana State Mineral Board, nor shall the Louisiana State Mineral Board be obligated to refund any consideration paid by the Lessor prior to such modification, cancellation, or abrogation, including, but not limited to, bonuses, rentals and royalties.

NOTE: The State of Louisiana does hereby reserve, and this lease shall be subject to, the imprescriptible right of surface use in the nature of a servitude in favor of the Department of Natural Resources, including its Offices and Commissions, for the sole purpose of implementing, constructing, servicing and maintaining approved coastal zone management and/or restoration projects. Utilization of any and all rights derived

under this lease by the mineral lessee, its agents, successors or assigns, shall not interfere with nor hinder the reasonable surface use by the Department of Natural Resources, its Offices or Commissions, as herein above reserved.

Applicant: Robert A. Schroeder, Inc.

Bidder	Cash Payment	Price/Acre	Rental	Oil	Gas	Other





PLAQUEMINES PARISH

BRETON SOUND AREA

MAIN PASS  
AREA, REVISED

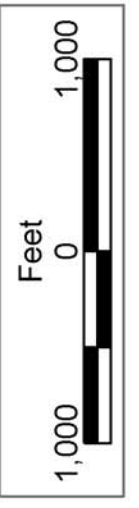
BLOCK BS0017

BLOCK BS0032

SL 1227

SL 4708

P.O.B.  
X=2,635,350.00  
Y=337,080.00



**TRACT 36375 - Portion of Block 32, Breton Sound Area, Plaquemines Parish, Louisiana**

All of the lands now or formerly constituting the beds and bottoms of all water bodies of every nature and description the title of which vests in the State of Louisiana, together with all islands arising therein and other lands formed by accretion or by reliction, where allowed by law, excepting tax adjudicated lands, and not presently under mineral lease on June 9, 2004, situated in Plaquemines Parish, Louisiana, and more particularly described as follows: Beginning at a point having Coordinates of X = 2,650,100.00 and Y = 337,080.00, said point being the Northeast corner of Block 32, Breton Sound Area, thence South 14,750.00 feet on and along the East line of said Block 32, to a point having Coordinates of X = 2,650,100.00 and Y = 322,330.00, said point being the Southeast corner of said Block 32; thence West 14,750.00 feet on and along the South line of said Block 32, to a point having Coordinates of X = 2,635,350.00 and Y = 322,330.00, said point being the Southwest corner of said Block 32; thence North 3,687.50 feet on and along the West line of said Block 32, to a point having Coordinates of X = 2,635,350.00 and Y = 326,017.50, said point being the Southwest corner of State Lease No. 1227, as amended; thence on and along the Southern and Eastern boundaries of said State Lease No. 1227, the following courses and distances, to wit: East 11,250.00 feet to a point having Coordinates of X = 2,646,600.00 and Y = 326,017.50, said point being the Southeast corner of said State Lease No. 1227; and North 11,062.50 feet to a point having Coordinates of X = 2,646,600.00 and Y = 337,080.00, said point being the Northeast corner of said State Lease No. 1227, said point also being on the North line of said Block 32; thence East 3,500.00 feet on and along said North line of said Block 32, to the point of beginning, containing approximately **2,137.50 acres**, all as more particularly outlined on a plat on file in the Office of Mineral Resources, Department of Natural Resources. All bearings, distances and coordinates are based on Louisiana Coordinate System of 1927, (North or South Zone), where applicable.

NOTE: The above description of the Tract nominated for lease has been provided and corrected, where required, exclusively by the nomination party. Any mineral lease selected from this Tract and awarded by the Louisiana State Mineral Board shall be without warranty of any kind, either express, implied, or statutory, including, but not limited to, the implied warranties of merchantability and fitness for a particular purpose. Should the mineral lease awarded by the Louisiana State Mineral Board be subsequently modified, cancelled or abrogated due to the existence of conflicting leases, operating agreements, private claims or other future obligations or conditions which may affect all or any portion of the leased Tract, it shall not relieve the Lessee of the obligation to pay any bonus due thereon to the Louisiana State Mineral Board, nor shall the Louisiana State Mineral Board be obligated to refund any consideration paid by the Lessor prior to such modification, cancellation, or abrogation, including, but not limited to, bonuses, rentals and royalties.

NOTE: The State of Louisiana does hereby reserve, and this lease shall be subject to, the imprescriptible right of surface use in the nature of a servitude in favor of the Department of Natural Resources, including its Offices and Commissions, for the sole purpose of implementing, constructing, servicing and maintaining approved coastal zone management and/or restoration projects. Utilization of any and all rights derived under this lease by the mineral lessee, its agents, successors or assigns, shall not interfere with nor hinder the reasonable surface use by the Department of Natural Resources, its Offices or Commissions, as herein above reserved.

Applicant: Robert A. Schroeder, Inc.

Bidder	Cash Payment	Price/Acre	Rental	Oil	Gas	Other



P.O.B.  
X=2,650,100.00  
Y=337,080.00

BLOCK BS0017

PLAQUEMINES PARISH

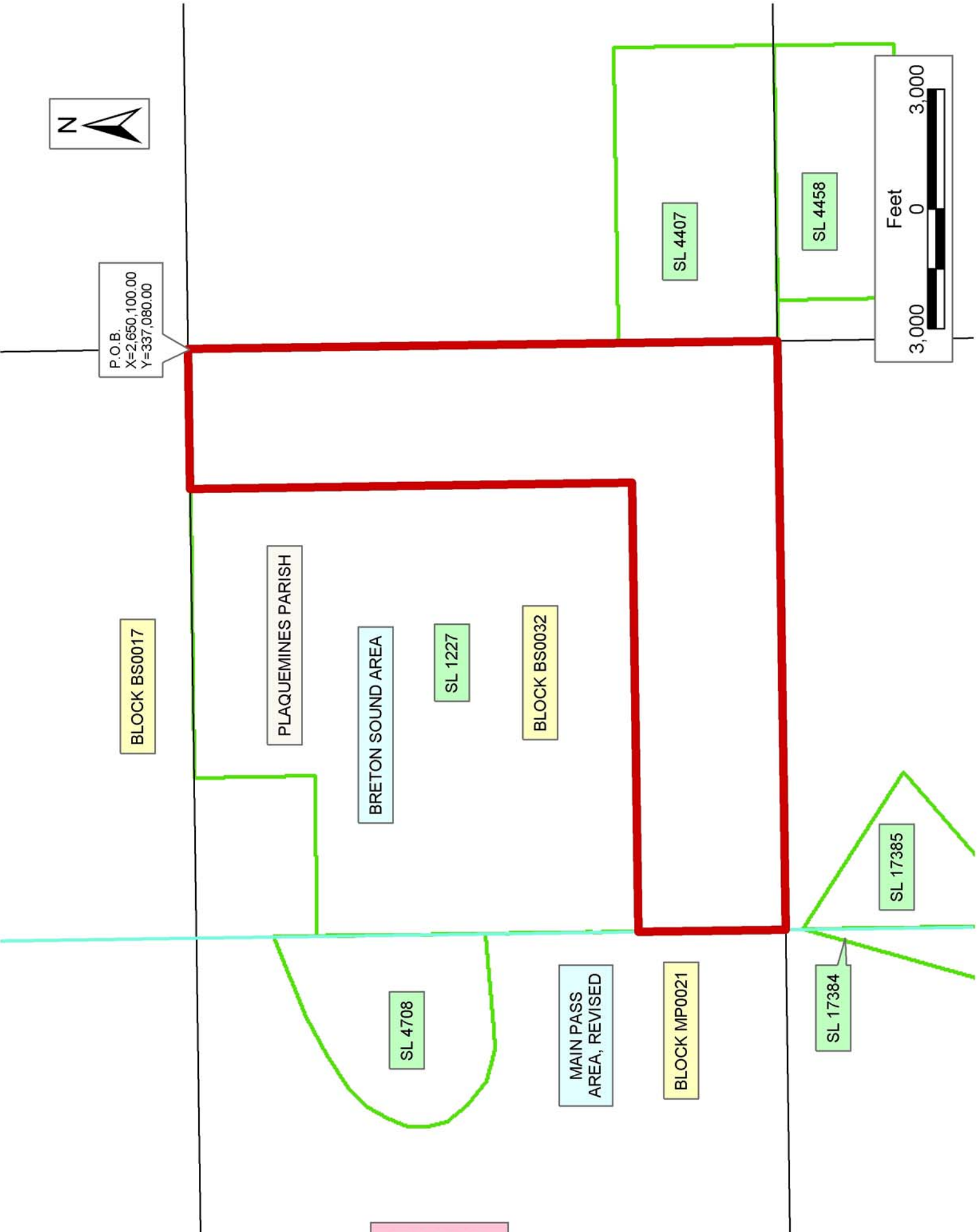
BRETON SOUND AREA

SL 1227

BLOCK BS0032

SL 4407

SL 4458



**TRACT 36376 - Portion of Block 23, Main Pass Area, Revised, Plaquemines Parish, Louisiana**

All of the lands now or formerly constituting the beds and bottoms of all water bodies of every nature and description the title of which vests in the State of Louisiana, together with all islands arising therein and other lands formed by accretion or by reliction, where allowed by law, excepting tax adjudicated lands, and not presently under mineral lease on June 9, 2004, situated in Plaquemines Parish, Louisiana, and more particularly described as follows: Beginning at the Northeast corner of Block 23, Main Pass Area, Revised, having Coordinates of X = 2,605,850.00 and Y = 337,080.00; thence South 7,375.00 feet on and along the East line of said Block 23 having Coordinates of X = 2,605,850.00 and Y = 329,705.00; thence West approximately 7,099 feet to a point on the West line of Block 23 having a Coordinate of Y = 329,705.00; thence along the Western boundary of said Block 23 the following courses and distance to wit: Northerly approximately 2,497 feet and Northwesterly approximately 10,112 feet to the Northwest corner of said Block 23 having a Coordinate of Y = 337,080.00; thence East approximately 15,998 feet to the point of beginning, **LESS AND EXCEPT** any portion of State Lease No. 195, as amended that may lie within the above described tract, containing approximately **1,704 acres**, all as more particularly outlined on a plat on file in the Office of Mineral Resources, Department of Natural Resources. All bearings, distances and coordinates are based on Louisiana Coordinate System of 1927, (North or South Zone), where applicable.

NOTE: The above description of the Tract nominated for lease has been provided and corrected, where required, exclusively by the nomination party. Any mineral lease selected from this Tract and awarded by the Louisiana State Mineral Board shall be without warranty of any kind, either express, implied, or statutory, including, but not limited to, the implied warranties of merchantability and fitness for a particular purpose. Should the mineral lease awarded by the Louisiana State Mineral Board be subsequently modified, cancelled or abrogated due to the existence of conflicting leases, operating agreements, private claims or other future obligations or conditions which may affect all or any portion of the leased Tract, it shall not relieve the Lessee of the obligation to pay any bonus due thereon to the Louisiana State Mineral Board, nor shall the Louisiana State Mineral Board be obligated to refund any consideration paid by the Lessor prior to such modification, cancellation, or abrogation, including, but not limited to, bonuses, rentals and royalties.

NOTE: The State of Louisiana does hereby reserve, and this lease shall be subject to, the imprescriptible right of surface use in the nature of a servitude in favor of the Department of Natural Resources, including its Offices and Commissions, for the sole purpose of implementing, constructing, servicing and maintaining approved coastal zone management and/or restoration projects. Utilization of any and all rights derived under this lease by the mineral lessee, its agents, successors or assigns, shall not interfere with nor hinder the reasonable surface use by the

Department of Natural Resources, its Offices or Commissions, as herein above reserved.

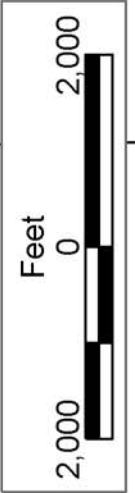
NOTE: The Department of Wildlife and Fisheries has designated certain areas in the coastal waters of the State of Louisiana as Oyster Seed Bed Areas. The exact location of those Seed Bed Areas must be obtained from the Department of Wildlife and Fisheries and any work done under a mineral lease from the State of Louisiana may necessarily be conducted in conformity with the rules and regulations promulgated by the said Department of Wildlife and Fisheries for Oyster Seed Bed Areas.

Applicant: Robert A. Schroeder, Inc.

Bidder	Cash Payment	Price/Acre	Rental	Oil	Gas	Other



P.O.B.  
X=2,605,850.00  
Y=337,080.00



MAIN PASS AREA, REVISED

BLOCK MP0014

PLAQUEMINES PARISH

BLOCK MP0023

SL 15529

SL 15531

SL 195