

TRACT 36357 - Plaquemines Parish, Louisiana

All of the lands now or formerly constituting the beds and bottoms of all water bodies of every nature and description the title of which vests in the State of Louisiana, together with all islands arising therein and other lands formed by accretion or by reliction, where allowed by law, excepting tax adjudicated lands, and not presently under mineral lease on June 9, 2004, situated in Plaquemines Parish, Louisiana, and more particularly described as follows: Beginning at a point having Coordinates of X = 2,447,283.00 and Y = 378,368.00; thence North 16,508.00 feet to a point having Coordinates of X = 2,447,283.00 and Y = 394,876.00; thence East 14,595.00 feet to a point having Coordinates of X = 2,461,878.00 and Y = 394,876.00; thence South 16,508.00 feet to a point having Coordinates of X = 2,461,878.00 and Y = 378,368.00; thence West 14,595.00 feet to the point of beginning, containing approximately **618 acres**, all as more particularly outlined on a plat on file in the Office of Mineral Resources, Department of Natural Resources. All bearings, distances and coordinates are based on Louisiana Coordinate System of 1927, (North or South Zone), where applicable.

NOTE: The above description of the Tract nominated for lease has been provided and corrected, where required, exclusively by the nomination party. Any mineral lease selected from this Tract and awarded by the Louisiana State Mineral Board shall be without warranty of any kind, either express, implied, or statutory, including, but not limited to, the implied warranties of merchantability and fitness for a particular purpose. Should the mineral lease awarded by the Louisiana State Mineral Board be subsequently modified, cancelled or abrogated due to the existence of conflicting leases, operating agreements, private claims or other future obligations or conditions which may affect all or any portion of the leased Tract, it shall not relieve the Lessee of the obligation to pay any bonus due thereon to the Louisiana State Mineral Board, nor shall the Louisiana State Mineral Board be obligated to refund any consideration paid by the Lessor prior to such modification, cancellation, or abrogation, including, but not limited to, bonuses, rentals and royalties.

NOTE: The State of Louisiana does hereby reserve, and this lease shall be subject to, the imprescriptible right of surface use in the nature of a servitude in favor of the Department of Natural Resources, including its Offices and Commissions, for the sole purpose of implementing, constructing, servicing and maintaining approved coastal zone management and/or restoration projects. Utilization of any and all rights derived under this lease by the mineral lessee, its agents, successors or assigns, shall not interfere with nor hinder the reasonable surface use by the Department of Natural Resources, its Offices or Commissions, as herein above reserved.

NOTE: The Department of Wildlife and Fisheries has designated certain areas in the coastal waters of the State of Louisiana as Oyster Seed Bed Areas. The exact location of those Seed Bed Areas must be obtained from

the Department of Wildlife and Fisheries and any work done under a mineral lease from the State of Louisiana may necessarily be conducted in conformity with the rules and regulations promulgated by the said Department of Wildlife and Fisheries for Oyster Seed Bed Areas.

Applicant: Granger Exploration

Bidder	Cash Payment	Price/Acre	Rental	Oil	Gas	Other



PLAQUEMINES PARISH



GRAND LAKE

T15S - R13E

P.O.B.
X=2,447,283.00
Y=378,368.00

TRACT 36358 - Plaquemines Parish, Louisiana

All of the lands now or formerly constituting the beds and bottoms of all water bodies of every nature and description the title of which vests in the State of Louisiana, together with all islands arising therein and other lands formed by accretion or by reliction, where allowed by law, excepting tax adjudicated lands, and not presently under mineral lease on June 9, 2004, situated in Plaquemines Parish, Louisiana, and more particularly described as follows: Beginning at a point having Coordinates of X = 2,461,878.00 and Y = 378,368.00; thence North 16,508.00 feet to a point having Coordinates of X = 2,461,878.00 and Y = 394,876.00; thence East 15,918.00 feet to a point having Coordinates of X = 2,477,796.00 and Y = 394,876.00; thence South approximately 3,184 feet to a point on the North line of State Lease No. 335, as amended, having a Coordinate of X = 2,477,796.00; thence along the boundary of said State Lease No. 335 the following courses: Westerly approximately 1,731 feet and Southerly approximately 13,302 feet to a point of intersection with an East West line having a Coordinate of Y = 378,368.00; thence West approximately 14,369 feet to the point of beginning, **LESS AND EXCEPT** that portion if any of State Lease No. 335, as amended, that may fall within the above described tract, containing approximately **1,859 acres**, all as more particularly outlined on a plat on file in the Office of Mineral Resources, Department of Natural Resources. All bearings, distances and coordinates are based on Louisiana Coordinate System of 1927, (North or South Zone), where applicable.

NOTE: The above description of the Tract nominated for lease has been provided and corrected, where required, exclusively by the nomination party. Any mineral lease selected from this Tract and awarded by the Louisiana State Mineral Board shall be without warranty of any kind, either express, implied, or statutory, including, but not limited to, the implied warranties of merchantability and fitness for a particular purpose. Should the mineral lease awarded by the Louisiana State Mineral Board be subsequently modified, cancelled or abrogated due to the existence of conflicting leases, operating agreements, private claims or other future obligations or conditions which may affect all or any portion of the leased Tract, it shall not relieve the Lessee of the obligation to pay any bonus due thereon to the Louisiana State Mineral Board, nor shall the Louisiana State Mineral Board be obligated to refund any consideration paid by the Lessor prior to such modification, cancellation, or abrogation, including, but not limited to, bonuses, rentals and royalties.

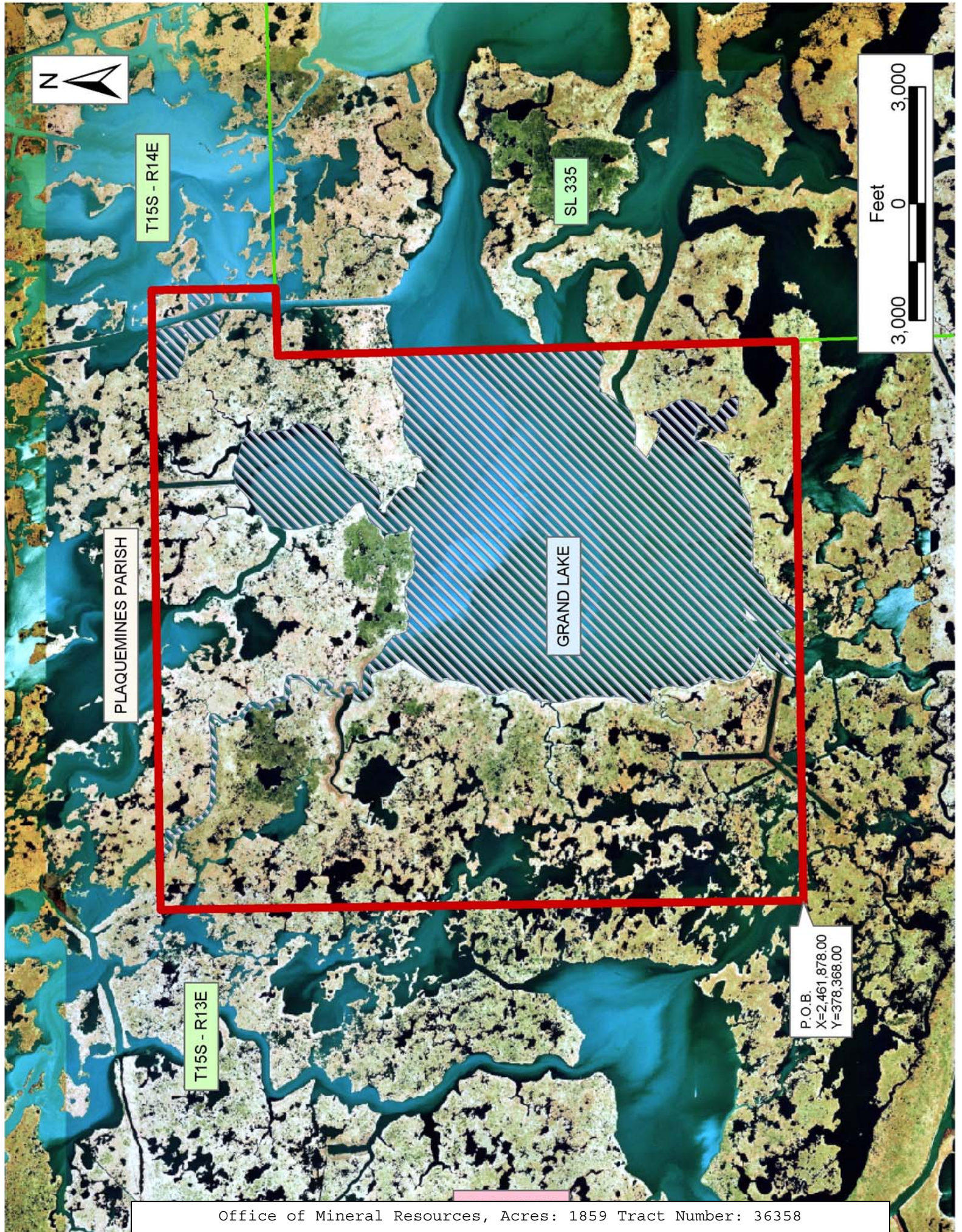
NOTE: The State of Louisiana does hereby reserve, and this lease shall be subject to, the imprescriptible right of surface use in the nature of a servitude in favor of the Department of Natural Resources, including its Offices and Commissions, for the sole purpose of implementing, constructing, servicing and maintaining approved coastal zone management and/or restoration projects. Utilization of any and all rights derived under this lease by the mineral lessee, its agents, successors or assigns, shall not interfere with nor hinder the reasonable surface use by the

Department of Natural Resources, its Offices or Commissions, as herein above reserved.

NOTE: The Department of Wildlife and Fisheries has designated certain areas in the coastal waters of the State of Louisiana as Oyster Seed Bed Areas. The exact location of those Seed Bed Areas must be obtained from the Department of Wildlife and Fisheries and any work done under a mineral lease from the State of Louisiana may necessarily be conducted in conformity with the rules and regulations promulgated by the said Department of Wildlife and Fisheries for Oyster Seed Bed Areas.

Applicant: Granger Exploration

Bidder	Cash Payment	Price/Acre	Rental	Oil	Gas	Other



TRACT 36359 - Plaquemines Parish, Louisiana

All of the lands now or formerly constituting the beds and bottoms of all water bodies of every nature and description the title of which vests in the State of Louisiana, together with all islands arising therein and other lands formed by accretion or by reliction, where allowed by law, excepting tax adjudicated lands, and not presently under mineral lease on June 9, 2004, situated in Plaquemines Parish, Louisiana, and more particularly described as follows: Beginning at a point having Coordinates of X = 2,447,283.00 and Y = 378,368.00; thence East 14,595.00 feet to a point having Coordinates of X = 2,461,878.00 and Y = 378,368.00; thence South 16,508.00 feet to a point having Coordinates of X = 2,461,878.00 and Y = 361,860.00; thence West 14,595.00 feet to a point having Coordinates of X = 2,447,283.00 and Y = 361,860.00; thence North 16,508.00 feet to the point of beginning, containing approximately **1,061 acres**, all as more particularly outlined on a plat on file in the Office of Mineral Resources, Department of Natural Resources. All bearings, distances and coordinates are based on Louisiana Coordinate System of 1927, (North or South Zone), where applicable.

NOTE: The above description of the Tract nominated for lease has been provided and corrected, where required, exclusively by the nomination party. Any mineral lease selected from this Tract and awarded by the Louisiana State Mineral Board shall be without warranty of any kind, either express, implied, or statutory, including, but not limited to, the implied warranties of merchantability and fitness for a particular purpose. Should the mineral lease awarded by the Louisiana State Mineral Board be subsequently modified, cancelled or abrogated due to the existence of conflicting leases, operating agreements, private claims or other future obligations or conditions which may affect all or any portion of the leased Tract, it shall not relieve the Lessee of the obligation to pay any bonus due thereon to the Louisiana State Mineral Board, nor shall the Louisiana State Mineral Board be obligated to refund any consideration paid by the Lessor prior to such modification, cancellation, or abrogation, including, but not limited to, bonuses, rentals and royalties.

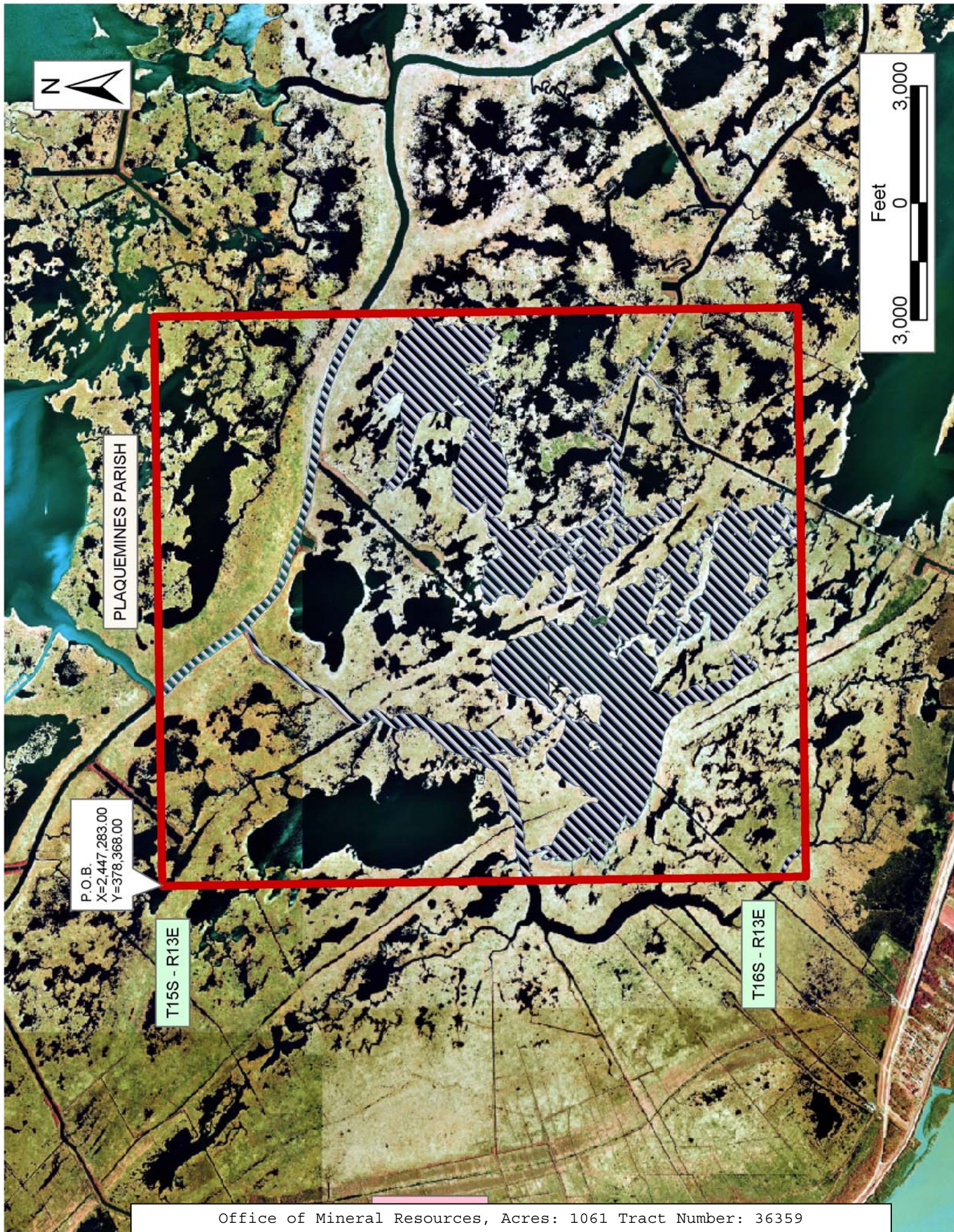
NOTE: The State of Louisiana does hereby reserve, and this lease shall be subject to, the imprescriptible right of surface use in the nature of a servitude in favor of the Department of Natural Resources, including its Offices and Commissions, for the sole purpose of implementing, constructing, servicing and maintaining approved coastal zone management and/or restoration projects. Utilization of any and all rights derived under this lease by the mineral lessee, its agents, successors or assigns, shall not interfere with nor hinder the reasonable surface use by the Department of Natural Resources, its Offices or Commissions, as herein above reserved.

NOTE: The Department of Wildlife and Fisheries has designated certain areas in the coastal waters of the State of Louisiana as Oyster Seed Bed Areas. The exact location of those Seed Bed Areas must be obtained from

the Department of Wildlife and Fisheries and any work done under a mineral lease from the State of Louisiana may necessarily be conducted in conformity with the rules and regulations promulgated by the said Department of Wildlife and Fisheries for Oyster Seed Bed Areas.

Applicant: Granger Exploration

Bidder	Cash Payment	Price/Acre	Rental	Oil	Gas	Other



PLAQUEMINES PARISH

P.O.B.
X=2,447,283.00
Y=378,368.00

T15S - R13E

T16S - R13E

TRACT 36360 - Plaquemines Parish, Louisiana

All of the lands now or formerly constituting the beds and bottoms of all water bodies of every nature and description the title of which vests in the State of Louisiana, together with all islands arising therein and other lands formed by accretion or by reliction, where allowed by law, excepting tax adjudicated lands, and not presently under mineral lease on June 9, 2004, situated in Plaquemines Parish, Louisiana, and more particularly described as follows: Beginning at a point having Coordinates of X = 2,461,878.00 and Y = 378,368.00; thence East approximately 14,369 feet to a point on the West line of State Lease No. 335, as amended, having a Coordinate of Y = 378,368.00; thence Southerly approximately 16,510 feet along the West line of said State Lease No. 335 to a point of intersection with an East West line having a Coordinate of Y = 361,860.00; thence West approximately 14,595 feet to a point having Coordinates of X = 2,461,878.00 and Y = 361,860.00; thence North 16,508.00 feet to the point of beginning, **LESS AND EXCEPT** that portion if any of State Lease No. 335, as amended, that may fall within the above described tract, containing approximately **187 acres**, all as more particularly outlined on a plat on file in the Office of Mineral Resources, Department of Natural Resources. All bearings, distances and coordinates are based on Louisiana Coordinate System of 1927, (North or South Zone), where applicable.

NOTE: The above description of the Tract nominated for lease has been provided and corrected, where required, exclusively by the nomination party. Any mineral lease selected from this Tract and awarded by the Louisiana State Mineral Board shall be without warranty of any kind, either express, implied, or statutory, including, but not limited to, the implied warranties of merchantability and fitness for a particular purpose. Should the mineral lease awarded by the Louisiana State Mineral Board be subsequently modified, cancelled or abrogated due to the existence of conflicting leases, operating agreements, private claims or other future obligations or conditions which may affect all or any portion of the leased Tract, it shall not relieve the Lessee of the obligation to pay any bonus due thereon to the Louisiana State Mineral Board, nor shall the Louisiana State Mineral Board be obligated to refund any consideration paid by the Lessor prior to such modification, cancellation, or abrogation, including, but not limited to, bonuses, rentals and royalties.

NOTE: The State of Louisiana does hereby reserve, and this lease shall be subject to, the imprescriptible right of surface use in the nature of a servitude in favor of the Department of Natural Resources, including its Offices and Commissions, for the sole purpose of implementing, constructing, servicing and maintaining approved coastal zone management and/or restoration projects. Utilization of any and all rights derived under this lease by the mineral lessee, its agents, successors or assigns, shall not interfere with nor hinder the reasonable surface use by the Department of Natural Resources, its Offices or Commissions, as herein above reserved.

NOTE: The Department of Wildlife and Fisheries has designated certain areas in the coastal waters of the State of Louisiana as Oyster Seed Bed Areas. The exact location of those Seed Bed Areas must be obtained from the Department of Wildlife and Fisheries and any work done under a mineral lease from the State of Louisiana may necessarily be conducted in conformity with the rules and regulations promulgated by the said Department of Wildlife and Fisheries for Oyster Seed Bed Areas.

Applicant: Granger Exploration

Bidder	Cash Payment	Price/Acre	Rental	Oil	Gas	Other



SL 335



PLAQUEMINES PARISH

P.O.B.
X=2,461,878.00
Y=3,783,368.00

T16S - R13E

TRACT 36361 - Plaquemines Parish, Louisiana

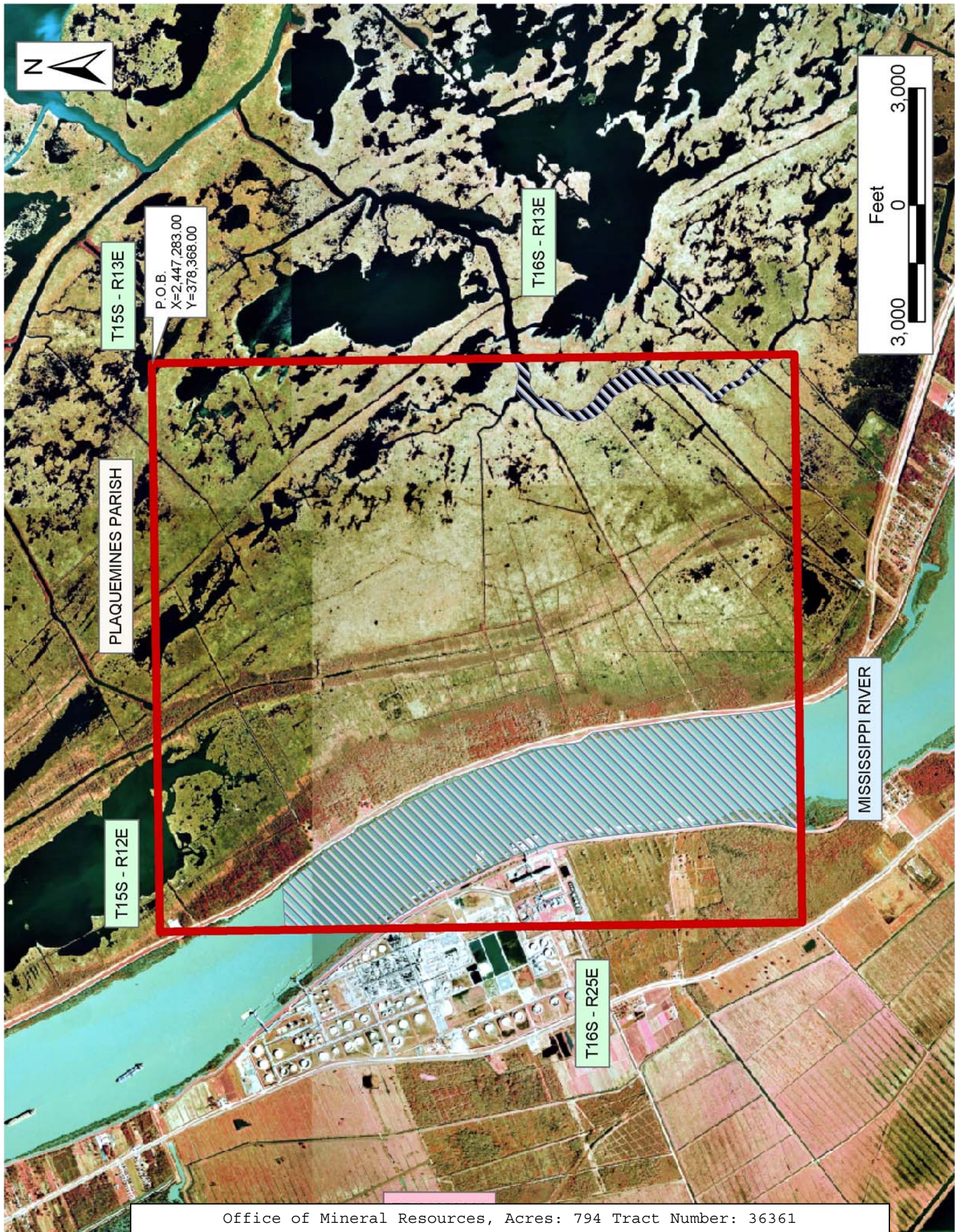
All of the lands now or formerly constituting the beds and bottoms of all water bodies of every nature and description the title of which vests in the State of Louisiana, together with all islands arising therein and other lands formed by accretion or by reliction, where allowed by law, excepting tax adjudicated lands, and not presently under mineral lease on June 9, 2004, situated in Plaquemines Parish, Louisiana, and more particularly described as follows: Beginning at a point having Coordinates of X = 2,447,283.00 and Y = 378,368.00; thence South 16,508.00 feet to a point having Coordinates of X = 2,447,283.00 and Y = 361,860.00; thence West 14,595.00 feet to a point having Coordinates of X = 2,432,688.00 and Y = 361,860.00; thence North 16,508.00 feet to a point having Coordinates of X = 2,432,688.00 and Y = 378,368.00; thence East 14,595.00 feet to the point of beginning, containing approximately **794 acres**, all as more particularly outlined on a plat on file in the Office of Mineral Resources, Department of Natural Resources. All bearings, distances and coordinates are based on Louisiana Coordinate System of 1927, (North or South Zone), where applicable.

NOTE: The above description of the Tract nominated for lease has been provided and corrected, where required, exclusively by the nomination party. Any mineral lease selected from this Tract and awarded by the Louisiana State Mineral Board shall be without warranty of any kind, either express, implied, or statutory, including, but not limited to, the implied warranties of merchantability and fitness for a particular purpose. Should the mineral lease awarded by the Louisiana State Mineral Board be subsequently modified, cancelled or abrogated due to the existence of conflicting leases, operating agreements, private claims or other future obligations or conditions which may affect all or any portion of the leased Tract, it shall not relieve the Lessee of the obligation to pay any bonus due thereon to the Louisiana State Mineral Board, nor shall the Louisiana State Mineral Board be obligated to refund any consideration paid by the Lessor prior to such modification, cancellation, or abrogation, including, but not limited to, bonuses, rentals and royalties.

NOTE: The State of Louisiana does hereby reserve, and this lease shall be subject to, the imprescriptible right of surface use in the nature of a servitude in favor of the Department of Natural Resources, including its Offices and Commissions, for the sole purpose of implementing, constructing, servicing and maintaining approved coastal zone management and/or restoration projects. Utilization of any and all rights derived under this lease by the mineral lessee, its agents, successors or assigns, shall not interfere with nor hinder the reasonable surface use by the Department of Natural Resources, its Offices or Commissions, as herein above reserved.

Applicant: Granger Exploration

Bidder	Cash Payment	Price/Acre	Rental	Oil	Gas	Other



PLAQUEMINES PARISH

T15S - R13E

P.O.B.
X=2,447,283.00
Y=378,368.00

T16S - R13E

MISSISSIPPI RIVER

T15S - R12E

T16S - R25E

TRACT 36362 - Portion of Block 2, Main Pass Area, Revised, St. Bernard Parish, Louisiana

All of the lands now or formerly constituting the beds and bottoms of all water bodies of every nature and description the title of which vests in the State of Louisiana, together with all islands arising therein and other lands formed by accretion or by reliction, where allowed by law, excepting tax adjudicated lands, and not presently under mineral lease on June 9, 2004, situated in St. Bernard Parish, Louisiana, and more particularly described as follows: Beginning at a point having Coordinates of X = 2,605,850.00 and Y = 373,955.00, said point being on the East line of Block 2, Main Pass Area, Revised; thence South 2,425.00 feet on and along said East line of said Block 2, Main Pass Area, Revised, to a point having Coordinates of X = 2,605,850.00 and Y = 371,530.00, said point being on the Northern boundary of State Lease No. 14564, as amended; thence on and along the Northern, Western and Southern boundaries of said State Lease No. 14564, the following courses and distances, to wit: North 67 degrees 00 minutes 00 seconds West 2,100.00 feet to a point having Coordinates of X = 2,603,916.94 and Y = 372,350.54; South 77 degrees 59 minutes 59 seconds West 2,000.01 feet to a point having Coordinates of X = 2,601,960.64 and Y = 371,934.71; South 18 degrees 00 minutes 08 seconds West 3,999.52 feet to a point having Coordinates of X = 2,600,724.57 and Y = 368,130.99; and South 63 degrees 14 minutes 15 seconds East 3,444.39 feet to a point having Coordinates of X = 2,603,800.00 and Y = 366,580.00, said point being on the South line of said Block 2; thence West 12,700.00 feet on and along the South line of said Block 2, to a point having Coordinates of X = 2,591,100.00 and Y = 366,580.00, said point being the Southwest corner of said Block 2; thence North 1,221.62 feet on and along the West line of said Block 2, to a point having Coordinates of X = 2,591,100.00 and Y = 367,801.62, said point being the Southwest corner of State Lease No. 17273, as amended; thence on and along the Southern and Eastern boundaries of said State Lease No. 17273, the Southern and Eastern boundaries of State Lease No. 17274, the Eastern and Northern boundaries of State Lease No. 17275, and the Eastern and Northern boundaries of State Lease No. 17272, the following courses and distances, to wit: North 89 degrees 40 minutes 48 seconds East 1,500.02 feet to a point having Coordinates of X = 2,592,600.00 and Y = 367,810.00, said point being the Southeast corner of said State Lease No. 17273; North 190.00 feet to a point having Coordinates of X = 2,592,600.00 and Y = 368,000.00, said point being the Southwest corner of said State Lease No. 17274; East 3,400.00 feet to a point having Coordinates of X = 2,596,000.00 and Y = 368,000.00, said point being the Southeast corner of said State Lease No. 17274; North 1,054.00 feet to a point having Coordinates of X = 2,596,000.00 and Y = 369,054.00, said point being the Northeast corner of said State Lease No. 17274, said point also being the Southeast corner of said State Lease No. 17275; North 1,746.00 feet to a point having Coordinates of X = 2,596,000.00 and Y = 370,800.00, said point being the Easternmost Northeast corner of said State Lease No. 17275; West 1,000.00 feet to a point having Coordinates of X = 2,595,000.00 and Y = 370,800.00; North 728.00 feet to a point having Coordinates of X = 2,595,000.00 and Y

= 371,528.00, said point being the Northernmost Northeast corner of said State Lease No. 17275; West 2,400.00 feet to a point having Coordinates of X = 2,592,600.00 and Y = 371,528.00, said point being the Northwest corner of said State Lease No. 17275, said point also being on the East line of said State Lease No. 17272; North 672.00 feet to a point having Coordinates of X = 2,592,600.00 and Y = 372,200.00, said point being the Northeast corner of said State Lease No. 17272; and West 1,500.00 feet to a point having Coordinates of X = 2,591,100.00 and Y = 372,200.00, said point being on the West line of said Block 2, Main Pass Area, Revised; thence North 1,755.00 feet on and along said West line of said Block 2, to a point having Coordinates of X = 2,591,100.00 and Y = 373,955.00; thence East 14,750.00 feet to the point of beginning, containing approximately **1,306 acres**, all as more particularly outlined on a plat on file in the Office of Mineral Resources, Department of Natural Resources. All bearings, distances and coordinates are based on Louisiana Coordinate System of 1927, (North or South Zone), where applicable.

NOTE: The above description of the Tract nominated for lease has been provided and corrected, where required, exclusively by the nomination party. Any mineral lease selected from this Tract and awarded by the Louisiana State Mineral Board shall be without warranty of any kind, either express, implied, or statutory, including, but not limited to, the implied warranties of merchantability and fitness for a particular purpose. Should the mineral lease awarded by the Louisiana State Mineral Board be subsequently modified, cancelled or abrogated due to the existence of conflicting leases, operating agreements, private claims or other future obligations or conditions which may affect all or any portion of the leased Tract, it shall not relieve the Lessee of the obligation to pay any bonus due thereon to the Louisiana State Mineral Board, nor shall the Louisiana State Mineral Board be obligated to refund any consideration paid by the Lessor prior to such modification, cancellation, or abrogation, including, but not limited to, bonuses, rentals and royalties.

NOTE: The State of Louisiana does hereby reserve, and this lease shall be subject to, the imprescriptible right of surface use in the nature of a servitude in favor of the Department of Natural Resources, including its Offices and Commissions, for the sole purpose of implementing, constructing, servicing and maintaining approved coastal zone management and/or restoration projects. Utilization of any and all rights derived under this lease by the mineral lessee, its agents, successors or assigns, shall not interfere with nor hinder the reasonable surface use by the Department of Natural Resources, its Offices or Commissions, as herein above reserved.

NOTE: The Department of Wildlife and Fisheries has designated certain areas in the coastal waters of the State of Louisiana as Oyster Seed Bed Areas. The exact location of those Seed Bed Areas must be obtained from the Department of Wildlife and Fisheries and any work done under a mineral lease from the State of Louisiana may necessarily be conducted in

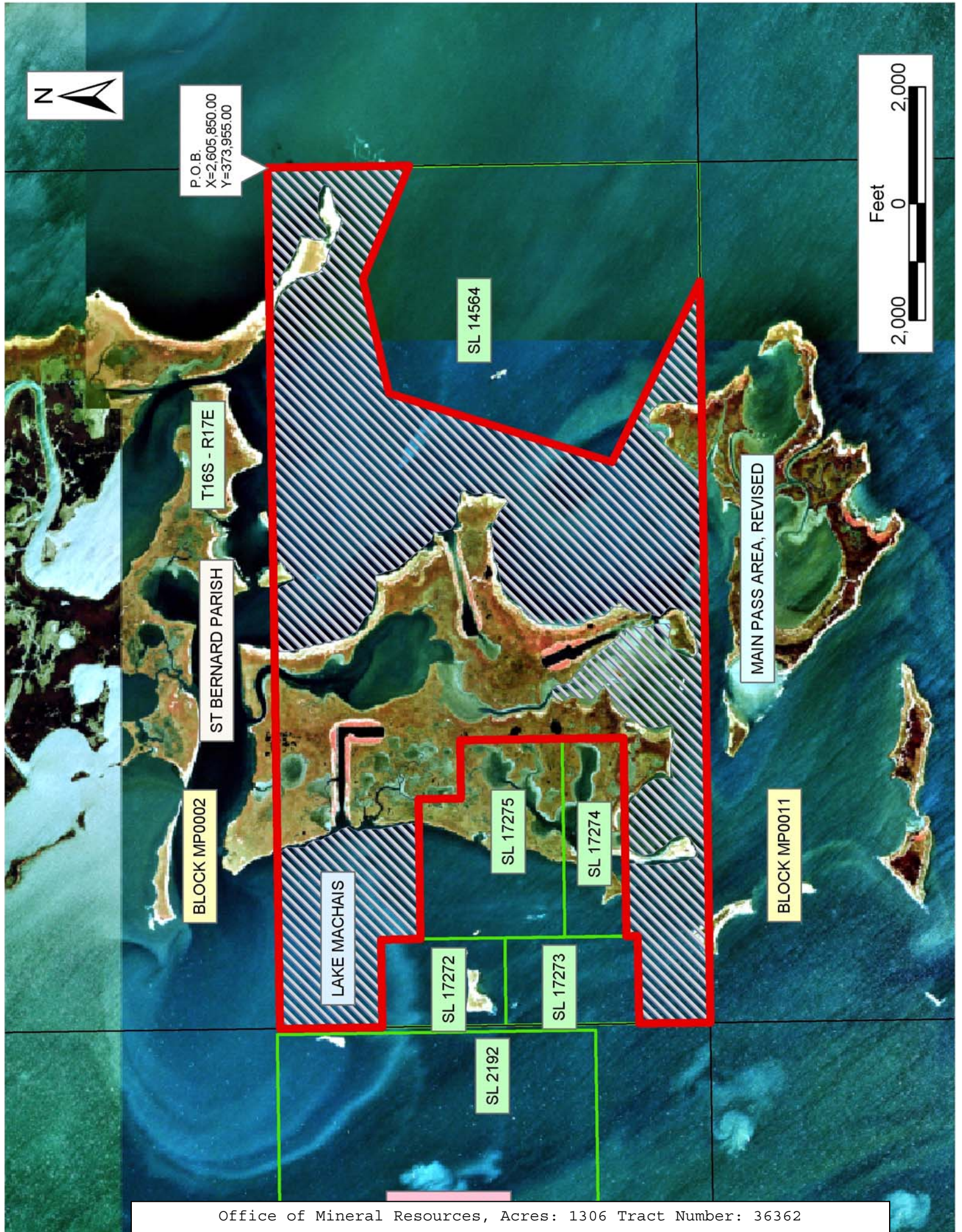
conformity with the rules and regulations promulgated by the said Department of Wildlife and Fisheries for Oyster Seed Bed Areas.

Applicant: Robert A. Schroeder, Inc.

Bidder	Cash Payment	Price/Acre	Rental	Oil	Gas	Other



P.O.B.
X=2,605,850.00
Y=373,955.00



TRACT 36363 - Portion of Block 11, Main Pass Area, Revised, St. Bernard Parish, Louisiana

All of the lands now or formerly constituting the beds and bottoms of all water bodies of every nature and description the title of which vests in the State of Louisiana, together with all islands arising therein and other lands formed by accretion or by reliction, where allowed by law, excepting tax adjudicated lands, and not presently under mineral lease on June 9, 2004, situated in St. Bernard Parish, Louisiana, and more particularly described as follows: Beginning at a point having Coordinates of X = 2,605,850.00 and Y = 366,580.00, said point also being the Northeast corner of Block 11, Main Pass Area, Revised; thence South 7,375.00 feet on and along the East line of said Block 11, to a point having Coordinates of X = 2,605,850.00 and Y = 359,205.00; thence West 14,750.00 feet to a point having Coordinates of X = 2,591,100.00 and Y = 359,205.00, said point being on the West line of said Block 11; thence North 7,375.00 feet on and along said West line of said Block 11, to a point having Coordinates of X = 2,591,100.00 and Y = 366,580.00, said point being the Northwest corner of said Block 11; thence East 14,750.00 feet on and along the North line of said Block 11, to the point of beginning, containing approximately **2,234 acres**, all as more particularly outlined on a plat on file in the Office of Mineral Resources, Department of Natural Resources. All bearings, distances and coordinates are based on Louisiana Coordinate System of 1927, (North or South Zone), where applicable.

NOTE: The above description of the Tract nominated for lease has been provided and corrected, where required, exclusively by the nomination party. Any mineral lease selected from this Tract and awarded by the Louisiana State Mineral Board shall be without warranty of any kind, either express, implied, or statutory, including, but not limited to, the implied warranties of merchantability and fitness for a particular purpose. Should the mineral lease awarded by the Louisiana State Mineral Board be subsequently modified, cancelled or abrogated due to the existence of conflicting leases, operating agreements, private claims or other future obligations or conditions which may affect all or any portion of the leased Tract, it shall not relieve the Lessee of the obligation to pay any bonus due thereon to the Louisiana State Mineral Board, nor shall the Louisiana State Mineral Board be obligated to refund any consideration paid by the Lessor prior to such modification, cancellation, or abrogation, including, but not limited to, bonuses, rentals and royalties.

NOTE: The State of Louisiana does hereby reserve, and this lease shall be subject to, the imprescriptible right of surface use in the nature of a servitude in favor of the Department of Natural Resources, including its Offices and Commissions, for the sole purpose of implementing, constructing, servicing and maintaining approved coastal zone management and/or restoration projects. Utilization of any and all rights derived under this lease by the mineral lessee, its agents, successors or assigns, shall not interfere with nor hinder the reasonable surface use by the

Department of Natural Resources, its Offices or Commissions, as herein above reserved.

NOTE: The Department of Wildlife and Fisheries has designated certain areas in the coastal waters of the State of Louisiana as Oyster Seed Bed Areas. The exact location of those Seed Bed Areas must be obtained from the Department of Wildlife and Fisheries and any work done under a mineral lease from the State of Louisiana may necessarily be conducted in conformity with the rules and regulations promulgated by the said Department of Wildlife and Fisheries for Oyster Seed Bed Areas.

Applicant: Robert A. Schroeder, Inc.

Bidder	Cash Payment	Price/Acre	Rental	Oil	Gas	Other



P.O.B.
X=2,605,850.00
Y=366,580.00

SL 14564

BLOCK MP0002

ST BERNARD PARISH

T16S - R17E



LAKE MACHAIS

BLOCK MP0011

MAIN PASS AREA, REVISED



TRACT 36364 - Portion of Block 11, Main Pass Area, Revised, Plaquemines and St. Bernard Parishes, Louisiana

All of the lands now or formerly constituting the beds and bottoms of all water bodies of every nature and description the title of which vests in the State of Louisiana, together with all islands arising therein and other lands formed by accretion or by reliction, where allowed by law, excepting tax adjudicated lands, and not presently under mineral lease on June 9, 2004, situated in Plaquemines and St. Bernard Parishes, Louisiana, and more particularly described as follows: Beginning at a point having Coordinates of X = 2,605,850.00 and Y = 351,830.00, said point being the Southeast corner of Block 11, Main Pass Area, Revised; thence West 14,750.00 feet on and along the South line of said Block 11, to a point having Coordinates of X = 2,591,100.00 and Y = 351,830.00, said point being the Southwest corner of said Block 11; thence North 7,375.00 feet on and along the West line of said Block 11, to a point having Coordinates of X = 2,591,100.00 and Y = 359,205.00; thence East 14,750.00 feet to a point having Coordinates of X = 2,605,850.00 and Y = 359,205.00, said point being on the East line of said Block 11; thence South 7,375.00 feet on and along said East line of said Block 11, to the point of beginning, **LESS AND EXCEPT** all of State Lease No. 17811 more particularly described as follows, to wit: Beginning at a point having Coordinates of X = 2,602,400.00 and Y = 354,874.00; thence South 85 degrees 36 minutes 40 seconds East 1,803.29 feet to a point having Coordinates of X = 2,604,198.00 and Y = 354,736.00; thence South 27 degrees 19 minutes 15 seconds East 2,645.05 feet to a point having Coordinates of X = 2,605,412.00 and Y = 352,386.00; thence South 34 degrees 27 minutes 07 seconds West 625.76 feet to a point having Coordinates of X = 2,605,058.00 and Y = 351,870.00; thence West 730.00 feet to a point having Coordinates of X = 2,604,328.00 and Y = 351,870.00; thence North 62 degrees 10 minutes 22 seconds West 1,786.61 feet to a point having Coordinates of X = 2,602,748.00 and Y = 352,704.00; thence North 30 degrees 07 minutes 16 seconds West 1,586.19 feet to a point having Coordinates of X = 2,601,952.00 and Y = 354,076.00; thence North 29 degrees 18 minutes 36 seconds East 915.16 feet to the point of beginning, containing 150.00 acres; containing approximately **2,347.27 acres**, all as more particularly outlined on a plat on file in the Office of Mineral Resources, Department of Natural Resources. All bearings, distances and coordinates are based on Louisiana Coordinate System of 1927, (North or South Zone), where applicable.

NOTE: The above description of the Tract nominated for lease has been provided and corrected, where required, exclusively by the nomination party. Any mineral lease selected from this Tract and awarded by the Louisiana State Mineral Board shall be without warranty of any kind, either express, implied, or statutory, including, but not limited to, the implied warranties of merchantability and fitness for a particular purpose. Should the mineral lease awarded by the Louisiana State Mineral Board be subsequently modified, cancelled or abrogated due to the existence of conflicting leases, operating agreements, private claims or

other future obligations or conditions which may affect all or any portion of the leased Tract, it shall not relieve the Lessee of the obligation to pay any bonus due thereon to the Louisiana State Mineral Board, nor shall the Louisiana State Mineral Board be obligated to refund any consideration paid by the Lessor prior to such modification, cancellation, or abrogation, including, but not limited to, bonuses, rentals and royalties.

NOTE: The State of Louisiana does hereby reserve, and this lease shall be subject to, the imprescriptible right of surface use in the nature of a servitude in favor of the Department of Natural Resources, including its Offices and Commissions, for the sole purpose of implementing, constructing, servicing and maintaining approved coastal zone management and/or restoration projects. Utilization of any and all rights derived under this lease by the mineral lessee, its agents, successors or assigns, shall not interfere with nor hinder the reasonable surface use by the Department of Natural Resources, its Offices or Commissions, as herein above reserved.

NOTE: The Department of Wildlife and Fisheries has designated certain areas in the coastal waters of the State of Louisiana as Oyster Seed Bed Areas. The exact location of those Seed Bed Areas must be obtained from the Department of Wildlife and Fisheries and any work done under a mineral lease from the State of Louisiana may necessarily be conducted in conformity with the rules and regulations promulgated by the said Department of Wildlife and Fisheries for Oyster Seed Bed Areas.

Applicant: Robert A. Schroeder, Inc.

Bidder	Cash Payment	Price/Acre	Rental	Oil	Gas	Other



MAIN PASS AREA, REVISED

ST BERNARD PARISH

LAKE MACHAIS

BLOCK MP0011

SL 17811

BLOCK MP0014

PLAQUEMINES PARISH

P.O.B.
X=2,605,850.00
Y=351,830.00



TRACT 36365 - Portion of Block 14, Main Pass Area, Revised, Plaquemines and St. Bernard Parishes, Louisiana

All of the lands now or formerly constituting the beds and bottoms of all water bodies of every nature and description the title of which vests in the State of Louisiana, together with all islands arising therein and other lands formed by accretion or by reliction, where allowed by law, excepting tax adjudicated lands, and not presently under mineral lease on June 9, 2004, situated in Plaquemines and St. Bernard Parishes, Louisiana, and more particularly described as follows: Beginning at a point having Coordinates of X = 2,605,850.00 and Y = 351,830.00, said point also being the Northeast corner of Block 14, Main Pass Area, Revised; thence South 7,375.00 feet on and along the East line of said Block 14, to a point having Coordinates of X = 2,605,850.00 and Y = 344,455.00; thence West 8,450.00 feet to a point having Coordinates of X = 2,597,400.00 and Y = 344,455.00, said point being the Northeast corner of State Lease No. 15529, as amended; thence West 6,300.00 feet on and along the North line of said State Lease No. 15529, to a point having Coordinates of X = 2,591,100.00 and Y = 344,455.00, said point being the Northwest corner of said State Lease No. 15529, said point also being on the West line of Block 14; thence North 7,375.00 feet on and along said West line of said Block 14, to a point having Coordinates of X = 2,591,100.00 and Y = 351,830.00, said point being the Northwest corner of said Block 14; thence East 14,750.00 feet on and along the North line of said Block 14, to the point of beginning, containing approximately **2,497.27 acres**, all as more particularly outlined on a plat on file in the Office of Mineral Resources, Department of Natural Resources. All bearings, distances and coordinates are based on Louisiana Coordinate System of 1927, (North or South Zone), where applicable.

NOTE: The above description of the Tract nominated for lease has been provided and corrected, where required, exclusively by the nomination party. Any mineral lease selected from this Tract and awarded by the Louisiana State Mineral Board shall be without warranty of any kind, either express, implied, or statutory, including, but not limited to, the implied warranties of merchantability and fitness for a particular purpose. Should the mineral lease awarded by the Louisiana State Mineral Board be subsequently modified, cancelled or abrogated due to the existence of conflicting leases, operating agreements, private claims or other future obligations or conditions which may affect all or any portion of the leased Tract, it shall not relieve the Lessee of the obligation to pay any bonus due thereon to the Louisiana State Mineral Board, nor shall the Louisiana State Mineral Board be obligated to refund any consideration paid by the Lessor prior to such modification, cancellation, or abrogation, including, but not limited to, bonuses, rentals and royalties.

NOTE: The State of Louisiana does hereby reserve, and this lease shall be subject to, the imprescriptible right of surface use in the nature of a servitude in favor of the Department of Natural Resources, including its Offices and Commissions, for the sole purpose of implementing,

constructing, servicing and maintaining approved coastal zone management and/or restoration projects. Utilization of any and all rights derived under this lease by the mineral lessee, its agents, successors or assigns, shall not interfere with nor hinder the reasonable surface use by the Department of Natural Resources, its Offices or Commissions, as herein above reserved.

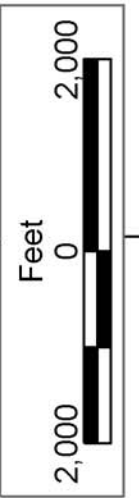
NOTE: The Department of Wildlife and Fisheries has designated certain areas in the coastal waters of the State of Louisiana as Oyster Seed Bed Areas. The exact location of those Seed Bed Areas must be obtained from the Department of Wildlife and Fisheries and any work done under a mineral lease from the State of Louisiana may necessarily be conducted in conformity with the rules and regulations promulgated by the said Department of Wildlife and Fisheries for Oyster Seed Bed Areas.

Applicant: Robert A. Schroeder, Inc.

Bidder	Cash Payment	Price/Acre	Rental	Oil	Gas	Other



P.O.B.
X=2,605,850.00
Y=351,830.00



BLOCK MP0011

ST BERNARD PARISH

SL 17811

PLAQUEMINES PARISH

MAIN PASS AREA, REVISED

BLOCK MP0014

SL 15529

SL 15531

TRACT 36366 - Portion of Block 15, Main Pass Area, Revised, Plaquemines Parish, Louisiana

All of the lands now or formerly constituting the beds and bottoms of all water bodies of every nature and description the title of which vests in the State of Louisiana, together with all islands arising therein and other lands formed by accretion or by reliction, where allowed by law, excepting tax adjudicated lands, and not presently under mineral lease on June 9, 2004, situated in Plaquemines Parish, Louisiana, and more particularly described as follows: Beginning at a point having Coordinates of X = 2,605,850.00 and Y = 351,830.00, said point being the Northwest corner of Block 15, Main Pass Area, Revised; thence East 7,375.00 feet on and along the North line of said Block 15, to a point having Coordinates of X = 2,613,225.00 and Y = 351,830.00; thence South 14,750.00 feet to a point having Coordinates of X = 2,613,225.00 and Y = 337,080.00, said point being on the South line of said Block 15; thence West 7,375.00 feet on and along said South line of said Block 15, to a point having Coordinates of X = 2,605,850.00 and Y = 337,080.00, said point being the Southwest corner of said Block 15; thence North 14,750.00 feet on and along the West line of said Block 15, to the point of beginning, containing approximately **2,497.27 acres**, all as more particularly outlined on a plat on file in the Office of Mineral Resources, Department of Natural Resources. All bearings, distances and coordinates are based on Louisiana Coordinate System of 1927, (North or South Zone), where applicable.

NOTE: The above description of the Tract nominated for lease has been provided and corrected, where required, exclusively by the nomination party. Any mineral lease selected from this Tract and awarded by the Louisiana State Mineral Board shall be without warranty of any kind, either express, implied, or statutory, including, but not limited to, the implied warranties of merchantability and fitness for a particular purpose. Should the mineral lease awarded by the Louisiana State Mineral Board be subsequently modified, cancelled or abrogated due to the existence of conflicting leases, operating agreements, private claims or other future obligations or conditions which may affect all or any portion of the leased Tract, it shall not relieve the Lessee of the obligation to pay any bonus due thereon to the Louisiana State Mineral Board, nor shall the Louisiana State Mineral Board be obligated to refund any consideration paid by the Lessor prior to such modification, cancellation, or abrogation, including, but not limited to, bonuses, rentals and royalties.

NOTE: The State of Louisiana does hereby reserve, and this lease shall be subject to, the imprescriptible right of surface use in the nature of a servitude in favor of the Department of Natural Resources, including its Offices and Commissions, for the sole purpose of implementing, constructing, servicing and maintaining approved coastal zone management and/or restoration projects. Utilization of any and all rights derived under this lease by the mineral lessee, its agents, successors or assigns, shall not interfere with nor hinder the reasonable surface use by the

Department of Natural Resources, its Offices or Commissions, as herein above reserved.

Applicant: Robert A. Schroeder, Inc.

Bidder	Cash Payment	Price/Acre	Rental	Oil	Gas	Other



SL 16172

BLOCK MP0015

P.O.B.
X=2,605,850.00
Y=351,830.00

SL 17811

ST BERNARD PARISH

MAIN PASS AREA, REVISED

BLOCK MP0014

PLAQUEMINES PARISH

