

**TRACT 36337 - Cameron Parish, Louisiana**

All of the lands now or formerly constituting the beds and bottoms of all water bodies of every nature and description the title of which vests in the State of Louisiana, together with all islands arising therein and other lands formed by accretion or by reliction, where allowed by law, excepting tax adjudicated lands, and not presently under mineral lease on June 9, 2004, situated in Cameron Parish, Louisiana, and more particularly described as follows: Beginning at a point having Coordinates of X = 1,217,030.51 and Y = 454,564.00; thence West 9,362.95 feet to a point on the Texas Louisiana boundary having Coordinates of X = 1,207,667.56 and Y = 454,564.00; thence North 36 degrees 44 minutes 14 seconds East 3,732.27 feet along said Texas Louisiana boundary to a point having Coordinates of X = 1,209,900.00 and Y = 457,555.00; thence North 31 degrees 07 minutes 12 seconds East 1,103.86 feet along said Texas Louisiana boundary to a point having Coordinates of X = 1,210,470.51 and Y = 458,500.00; thence East 6,560.00 feet to a point having Coordinates of X = 1,217,030.51 and Y = 458,500.00; thence South 3,936.00 feet to the point of beginning, containing approximately **714.76 acres, LESS AND EXCEPT** that portion thereof, if any, located West of the boundary line between the States of Texas and Louisiana as determined by the report of the Special Master and adjudicated by the Supreme Court of the United States in litigation styled **Texas v. Louisiana, et al No. 36 Original**, or as otherwise approved by said court, all as more particularly outlined on a plat on file in the Office of Mineral Resources, Department of Natural Resources. All bearings, distances and coordinates are based on Louisiana Coordinate System of 1927, (North or South Zone), where applicable.

NOTE: The above description of the Tract nominated for lease has been provided and corrected, where required, exclusively by the nomination party. Any mineral lease selected from this Tract and awarded by the Louisiana State Mineral Board shall be without warranty of any kind, either express, implied, or statutory, including, but not limited to, the implied warranties of merchantability and fitness for a particular purpose. Should the mineral lease awarded by the Louisiana State Mineral Board be subsequently modified, cancelled or abrogated due to the existence of conflicting leases, operating agreements, private claims or other future obligations or conditions which may affect all or any portion of the leased Tract, it shall not relieve the Lessee of the obligation to pay any bonus due thereon to the Louisiana State Mineral Board, nor shall the Louisiana State Mineral Board be obligated to refund any consideration paid by the Lessor prior to such modification, cancellation, or abrogation, including, but not limited to, bonuses, rentals and royalties.

NOTE: The State of Louisiana does hereby reserve, and this lease shall be subject to, the imprescriptible right of surface use in the nature of a servitude in favor of the Department of Natural Resources, including its Offices and Commissions, for the sole purpose of implementing, constructing, servicing and maintaining approved coastal zone management and/or restoration projects. Utilization of any and all rights derived

under this lease by the mineral lessee, its agents, successors or assigns, shall not interfere with nor hinder the reasonable surface use by the Department of Natural Resources, its Offices or Commissions, as herein above reserved.

Applicant: Stephen M. Jenkins, Inc.

Bidder	Cash Payment	Price/Acre	Rental	Oil	Gas	Other



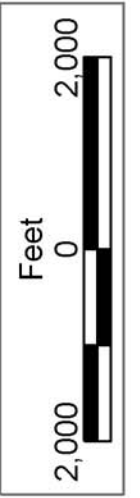
CAMERON PARISH

LA

TX

SABINE LAKE

P.O.B.  
X=1,217,030.51  
Y=454,564.00



**TRACT 36338 - Cameron Parish, Louisiana**

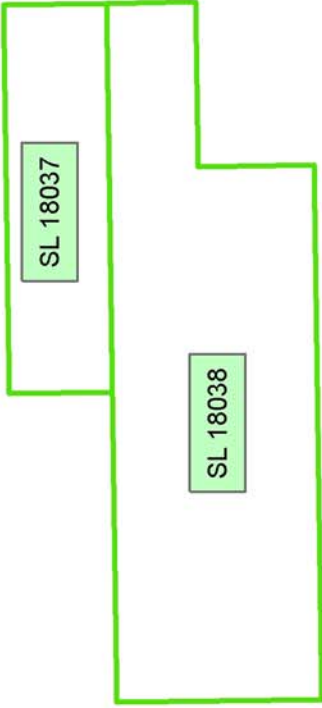
All of the lands now or formerly constituting the beds and bottoms of all water bodies of every nature and description the title of which vests in the State of Louisiana, together with all islands arising therein and other lands formed by accretion or by reliction, where allowed by law, excepting tax adjudicated lands, and not presently under mineral lease on June 9, 2004, situated in Cameron Parish, Louisiana, and more particularly described as follows: Beginning at a point having Coordinates of X = 1,217,030.51 and Y = 454,564.00; thence North 3,936.00 feet to a point having Coordinates of X = 1,217,030.51 and Y = 458,500.00; thence East 8,858.00 feet to a point having Coordinates of X = 1,225,888.51 and Y = 458,500.00; thence South 3,936.00 feet to a point having Coordinates of X = 1,225,888.51 and Y = 454,564.00: thence West 8,858.00 feet to the point of beginning, containing approximately **800.39 acres**, all as more particularly outlined on a plat on file in the Office of Mineral Resources, Department of Natural Resources. All bearings, distances and coordinates are based on Louisiana Coordinate System of 1927, (North or South Zone), where applicable.

NOTE: The above description of the Tract nominated for lease has been provided and corrected, where required, exclusively by the nomination party. Any mineral lease selected from this Tract and awarded by the Louisiana State Mineral Board shall be without warranty of any kind, either express, implied, or statutory, including, but not limited to, the implied warranties of merchantability and fitness for a particular purpose. Should the mineral lease awarded by the Louisiana State Mineral Board be subsequently modified, cancelled or abrogated due to the existence of conflicting leases, operating agreements, private claims or other future obligations or conditions which may affect all or any portion of the leased Tract, it shall not relieve the Lessee of the obligation to pay any bonus due thereon to the Louisiana State Mineral Board, nor shall the Louisiana State Mineral Board be obligated to refund any consideration paid by the Lessor prior to such modification, cancellation, or abrogation, including, but not limited to, bonuses, rentals and royalties.

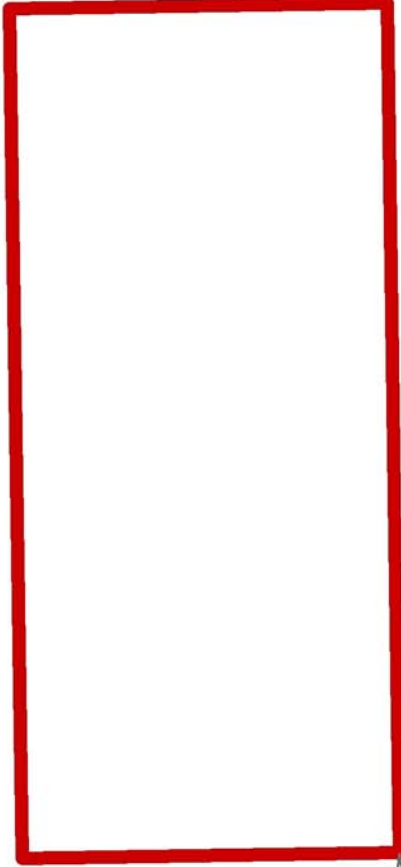
NOTE: The State of Louisiana does hereby reserve, and this lease shall be subject to, the imprescriptible right of surface use in the nature of a servitude in favor of the Department of Natural Resources, including its Offices and Commissions, for the sole purpose of implementing, constructing, servicing and maintaining approved coastal zone management and/or restoration projects. Utilization of any and all rights derived under this lease by the mineral lessee, its agents, successors or assigns, shall not interfere with nor hinder the reasonable surface use by the Department of Natural Resources, its Offices or Commissions, as herein above reserved.

Applicant: Stephen M. Jenkins, Inc.

Bidder	Cash Payment	Price/Acre	Rental	Oil	Gas	Other



SABINE LAKE



CAMERON PARISH

P.O.B.  
X=1,217,030.51  
Y=454,564.00

LA

TX



**TRACT 36339 - Cameron Parish, Louisiana**

All of the lands now or formerly constituting the beds and bottoms of all water bodies of every nature and description the title of which vests in the State of Louisiana, together with all islands arising therein and other lands formed by accretion or by reliction, where allowed by law, excepting tax adjudicated lands, and not presently under mineral lease on June 9, 2004, situated in Cameron Parish, Louisiana, and more particularly described as follows: Beginning at a point having Coordinates of X = 1,214,884.56 and Y = 454,564.00; thence South 3,936.00 feet to a point having Coordinates of X = 1,214,884.56 and Y = 450,628.00; thence West 9,117.19 feet to a point on the Texas Louisiana boundary line having Coordinates of X = 1,205,767.37 and Y = 450,628.00; thence North 35 degrees 51 minutes 28 seconds East 175.21 feet along said Texas Louisiana boundary to a point having Coordinates of X = 1,205,870.00 and Y = 450,770.00; thence North 24 degrees 40 Minutes 16 seconds East 3,964.93 feet along said Texas Louisiana boundary line to a point having Coordinates of X = 1,207,525.00 and Y = 454,373.00; thence North 36 degrees 44 minutes 14 seconds East 238.34 feet along said Texas Louisiana boundary line to a point having Coordinates of X = 1,207,667.56 and Y = 454,564.00; thence East 7,217.00 feet to the point of beginning, containing approximately **738.69 acres, LESS AND EXCEPT** that portion thereof, if any, located West of the boundary line between the States of Texas and Louisiana as determined by the report of the Special Master and adjudicated by the Supreme Court of the United States in litigation styled **Texas v. Louisiana, et al No. 36 Original**, or as otherwise approved by said court, all as more particularly outlined on a plat on file in the Office of Mineral Resources, Department of Natural Resources. All bearings, distances and coordinates are based on Louisiana Coordinate System of 1927, (North or South Zone), where applicable.

NOTE: The above description of the Tract nominated for lease has been provided and corrected, where required, exclusively by the nomination party. Any mineral lease selected from this Tract and awarded by the Louisiana State Mineral Board shall be without warranty of any kind, either express, implied, or statutory, including, but not limited to, the implied warranties of merchantability and fitness for a particular purpose. Should the mineral lease awarded by the Louisiana State Mineral Board be subsequently modified, cancelled or abrogated due to the existence of conflicting leases, operating agreements, private claims or other future obligations or conditions which may affect all or any portion of the leased Tract, it shall not relieve the Lessee of the obligation to pay any bonus due thereon to the Louisiana State Mineral Board, nor shall the Louisiana State Mineral Board be obligated to refund any consideration paid by the Lessor prior to such modification, cancellation, or abrogation, including, but not limited to, bonuses, rentals and royalties.

NOTE: The State of Louisiana does hereby reserve, and this lease shall be subject to, the imprescriptible right of surface use in the nature of a servitude in favor of the Department of Natural Resources, including its

Offices and Commissions, for the sole purpose of implementing, constructing, servicing and maintaining approved coastal zone management and/or restoration projects. Utilization of any and all rights derived under this lease by the mineral lessee, its agents, successors or assigns, shall not interfere with nor hinder the reasonable surface use by the Department of Natural Resources, its Offices or Commissions, as herein above reserved.

Applicant: Stephen M. Jenkins, Inc.

Bidder	Cash Payment	Price/Acre	Rental	Oil	Gas	Other



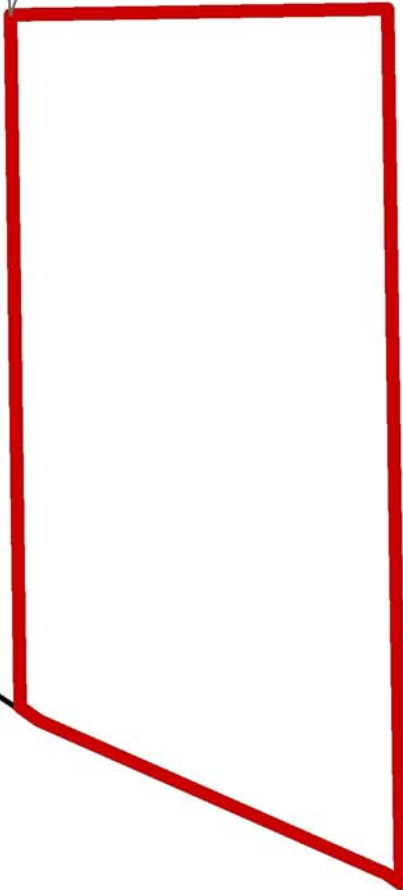


CAMERON PARISH

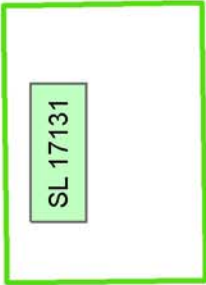
LA

TX

P.O.B.  
X=1,214,884.56  
Y=454,564.00



SABINE LAKE



SL 16095



**TRACT 36340 - Cameron Parish, Louisiana**

All of the lands now or formerly constituting the beds and bottoms of all water bodies of every nature and description the title of which vests in the State of Louisiana, together with all islands arising therein and other lands formed by accretion or by reliction, where allowed by law, excepting tax adjudicated lands, and not presently under mineral lease on June 9, 2004, situated in Cameron Parish, Louisiana, and more particularly described as follows: Beginning at a point having Coordinates of X = 1,223,084.56 and Y = 450,628.00; thence West 8,200.00 feet to a point having Coordinates of X = 1,214,884.56 and Y = 450,628.00; thence North 3,936.00 feet to a point having Coordinates of X = 1,214,884.56 and Y = 454,564.00; thence East 8,200.00 feet to a point having Coordinates of X = 1,223,084.56 and Y = 454,564.00; thence South 3,936.00 feet to the point of beginning, containing approximately **740.93 acres**, all as more particularly outlined on a plat on file in the Office of Mineral Resources, Department of Natural Resources. All bearings, distances and coordinates are based on Louisiana Coordinate System of 1927, (North or South Zone), where applicable.

NOTE: The above description of the Tract nominated for lease has been provided and corrected, where required, exclusively by the nomination party. Any mineral lease selected from this Tract and awarded by the Louisiana State Mineral Board shall be without warranty of any kind, either express, implied, or statutory, including, but not limited to, the implied warranties of merchantability and fitness for a particular purpose. Should the mineral lease awarded by the Louisiana State Mineral Board be subsequently modified, cancelled or abrogated due to the existence of conflicting leases, operating agreements, private claims or other future obligations or conditions which may affect all or any portion of the leased Tract, it shall not relieve the Lessee of the obligation to pay any bonus due thereon to the Louisiana State Mineral Board, nor shall the Louisiana State Mineral Board be obligated to refund any consideration paid by the Lessor prior to such modification, cancellation, or abrogation, including, but not limited to, bonuses, rentals and royalties.

NOTE: The State of Louisiana does hereby reserve, and this lease shall be subject to, the imprescriptible right of surface use in the nature of a servitude in favor of the Department of Natural Resources, including its Offices and Commissions, for the sole purpose of implementing, constructing, servicing and maintaining approved coastal zone management and/or restoration projects. Utilization of any and all rights derived under this lease by the mineral lessee, its agents, successors or assigns, shall not interfere with nor hinder the reasonable surface use by the Department of Natural Resources, its Offices or Commissions, as herein above reserved.

Applicant: Stephen M. Jenkins, Inc.

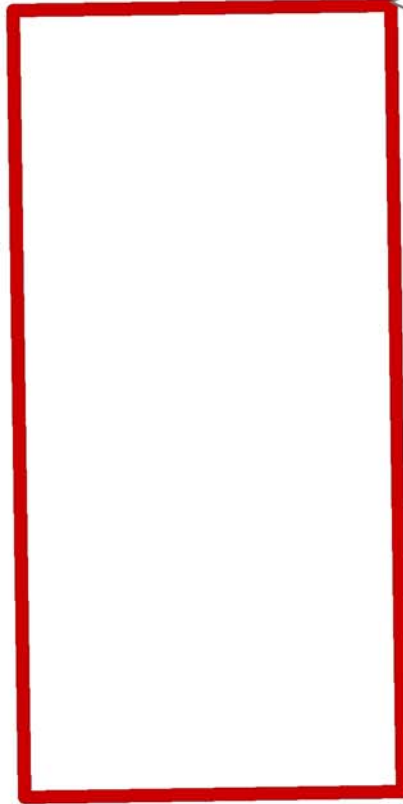
Bidder	Cash Payment	Price/Acre	Rental	Oil	Gas	Other



SL 18038

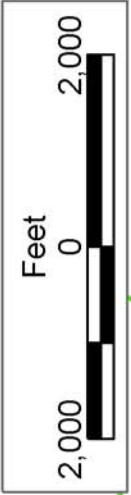
CAMERON PARISH

SABINE LAKE



P.O.B.  
X=1,223,084.56  
Y=450,628.00

SL 16095



SL 17131

TX LA

**TRACT 36341 - Portion of Block 46, Chandeleur Sound Area, St. Bernard Parish, Louisiana**

All of the lands now or formerly constituting the beds and bottoms of all water bodies of every nature and description the title of which vests in the State of Louisiana, together with all islands arising therein and other lands formed by accretion or by reliction, where allowed by law, excepting tax adjudicated lands, and not presently under mineral lease on June 9, 2004, situated in St. Bernard Parish, Louisiana, and more particularly described as follows: Beginning at the Southeast corner of State Lease No. 17958 having Coordinates of X = 2,583,000.00 and Y = 435,157.00; thence East 15,758.00 feet to a point having Coordinates of X = 2,598,758.00 and Y = 435,157.00; thence South 16,767.00 feet to a point within Block 46, Chandeleur Sound Area, having Coordinates of X = 2,598,758.00 and Y = 418,390.00; thence West 15,758.00 feet to a point having Coordinates of X = 2,583,000.00 and Y = 418,390.00; thence North 16,767.00 feet to the point of beginning, containing approximately **1,479 acres**, all as more particularly outlined on a plat on file in the Office of Mineral Resources, Department of Natural Resources. All bearings, distances and coordinates are based on Louisiana Coordinate System of 1927, (North or South Zone), where applicable.

NOTE: The above description of the Tract nominated for lease has been provided and corrected, where required, exclusively by the nomination party. Any mineral lease selected from this Tract and awarded by the Louisiana State Mineral Board shall be without warranty of any kind, either express, implied, or statutory, including, but not limited to, the implied warranties of merchantability and fitness for a particular purpose. Should the mineral lease awarded by the Louisiana State Mineral Board be subsequently modified, cancelled or abrogated due to the existence of conflicting leases, operating agreements, private claims or other future obligations or conditions which may affect all or any portion of the leased Tract, it shall not relieve the Lessee of the obligation to pay any bonus due thereon to the Louisiana State Mineral Board, nor shall the Louisiana State Mineral Board be obligated to refund any consideration paid by the Lessor prior to such modification, cancellation, or abrogation, including, but not limited to, bonuses, rentals and royalties.

NOTE: The Office of Mineral Resources will require a minimum bonus of \$190 per acre and a minimum royalty of 22%.

NOTE: The State of Louisiana does hereby reserve, and this lease shall be subject to, the imprescriptible right of surface use in the nature of a servitude in favor of the Department of Natural Resources, including its Offices and Commissions, for the sole purpose of implementing, constructing, servicing and maintaining approved coastal zone management and/or restoration projects. Utilization of any and all rights derived under this lease by the mineral lessee, its agents, successors or assigns, shall not interfere with nor hinder the reasonable surface use by the

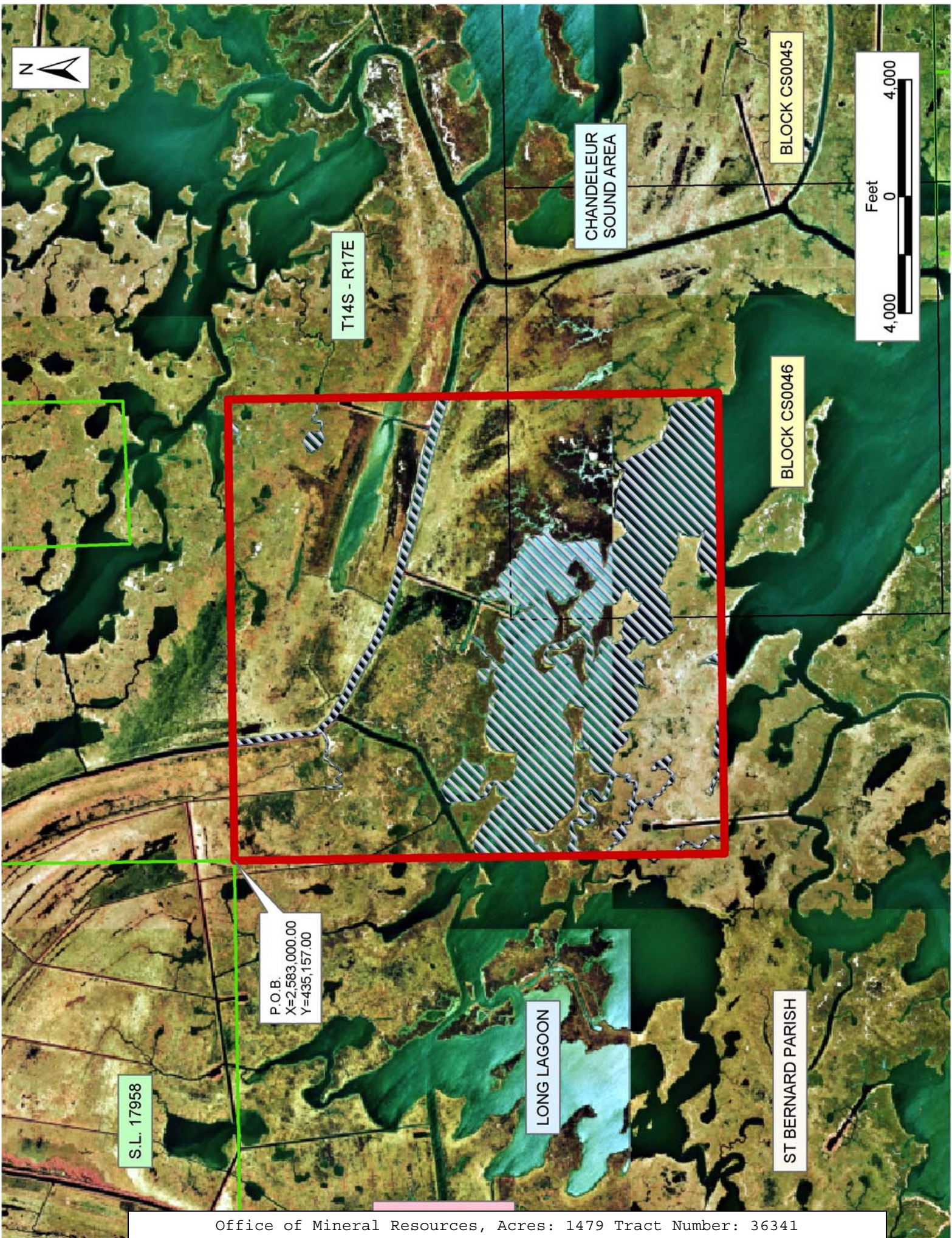
Department of Natural Resources, its Offices or Commissions, as herein above reserved.

NOTE: The Department of Wildlife and Fisheries has designated certain areas in the coastal waters of the State of Louisiana as Oyster Seed Bed Areas. The exact location of those Seed Bed Areas must be obtained from the Department of Wildlife and Fisheries and any work done under a mineral lease from the State of Louisiana may necessarily be conducted in conformity with the rules and regulations promulgated by the said Department of Wildlife and Fisheries for Oyster Seed Bed Areas.

Applicant: Harold J. Anderson, Inc.

Bidder	Cash Payment	Price/Acre	Rental	Oil	Gas	Other







**TRACT 36342 - Portion of Blocks 45, and 46, Chandeleur Sound Area, St. Bernard Parish, Louisiana**

All of the lands now or formerly constituting the beds and bottoms of all water bodies of every nature and description the title of which vests in the State of Louisiana, together with all islands arising therein and other lands formed by accretion or by reliction, where allowed by law, excepting tax adjudicated lands, and not presently under mineral lease on June 9, 2004, situated in St. Bernard Parish, Louisiana, and more particularly described as follows: Beginning at a point within Block 45, Chandeleur Sound Area, having Coordinates of X = 2,614,516.00 and Y = 418,390.00; thence West 15,758.00 feet to a point within Block 46, having Coordinates of X = 2,598,758.00 and Y = 418,390.00; thence North 16,767.00 feet to a point having Coordinates of X = 2,598,758.00 and Y = 435,157.00; thence East 15,758.00 feet to a point having Coordinates of X = 2,614,516.00 and Y = 435,157.00; thence South 16,767.00 feet to the point of beginning, containing approximately **1,853 acres**, all as more particularly outlined on a plat on file in the Office of Mineral Resources, Department of Natural Resources. All bearings, distances and coordinates are based on Louisiana Coordinate System of 1927, (North or South Zone), where applicable.

NOTE: The above description of the Tract nominated for lease has been provided and corrected, where required, exclusively by the nomination party. Any mineral lease selected from this Tract and awarded by the Louisiana State Mineral Board shall be without warranty of any kind, either express, implied, or statutory, including, but not limited to, the implied warranties of merchantability and fitness for a particular purpose. Should the mineral lease awarded by the Louisiana State Mineral Board be subsequently modified, cancelled or abrogated due to the existence of conflicting leases, operating agreements, private claims or other future obligations or conditions which may affect all or any portion of the leased Tract, it shall not relieve the Lessee of the obligation to pay any bonus due thereon to the Louisiana State Mineral Board, nor shall the Louisiana State Mineral Board be obligated to refund any consideration paid by the Lessor prior to such modification, cancellation, or abrogation, including, but not limited to, bonuses, rentals and royalties.

NOTE: The Office of Mineral Resources will require a minimum bonus of \$190 per acre and a minimum royalty of 22%.

NOTE: The State of Louisiana does hereby reserve, and this lease shall be subject to, the imprescriptible right of surface use in the nature of a servitude in favor of the Department of Natural Resources, including its Offices and Commissions, for the sole purpose of implementing, constructing, servicing and maintaining approved coastal zone management and/or restoration projects. Utilization of any and all rights derived under this lease by the mineral lessee, its agents, successors or assigns, shall not interfere with nor hinder the reasonable surface use by the



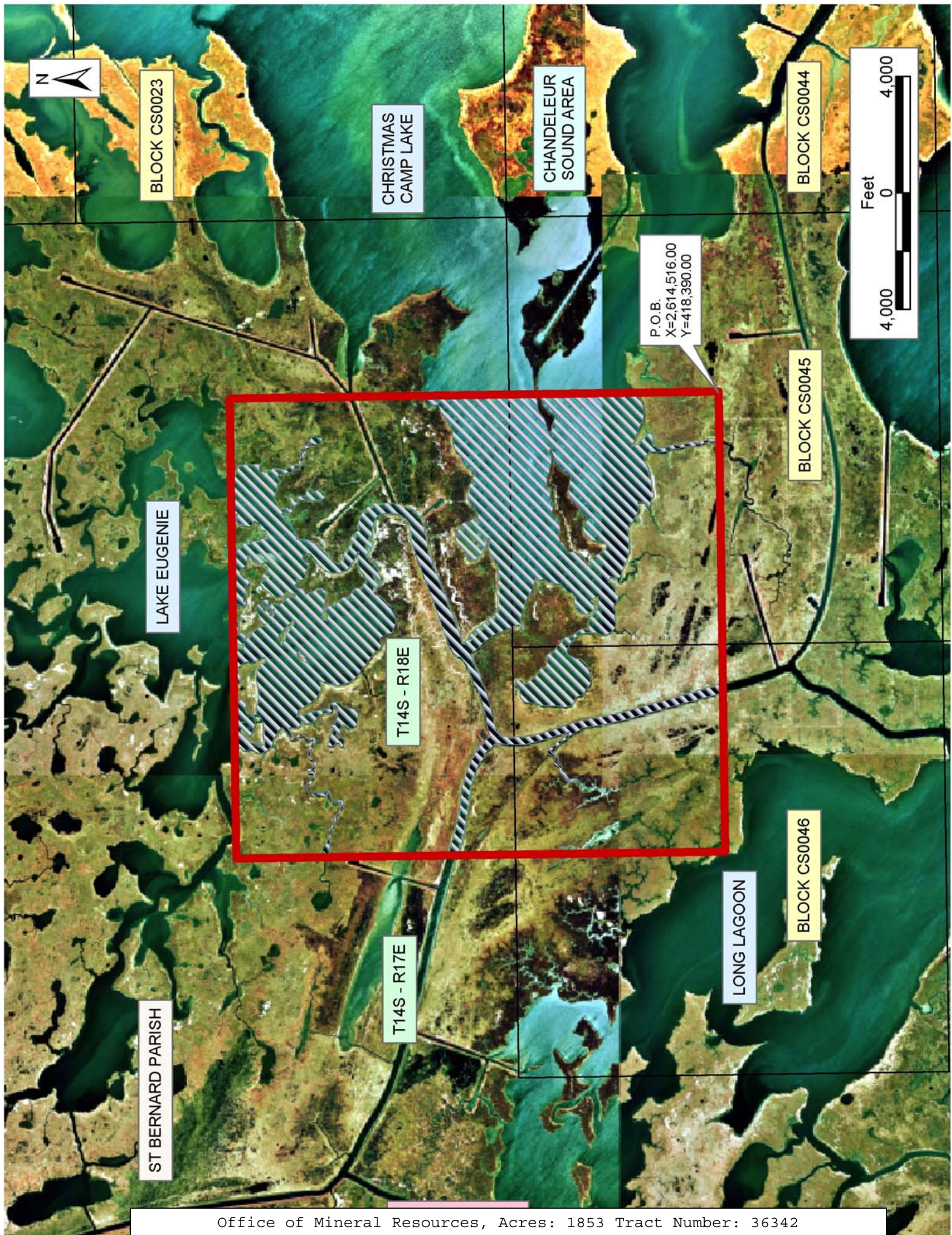
Department of Natural Resources, its Offices or Commissions, as herein above reserved.

NOTE: The Department of Wildlife and Fisheries has designated certain areas in the coastal waters of the State of Louisiana as Oyster Seed Bed Areas. The exact location of those Seed Bed Areas must be obtained from the Department of Wildlife and Fisheries and any work done under a mineral lease from the State of Louisiana may necessarily be conducted in conformity with the rules and regulations promulgated by the said Department of Wildlife and Fisheries for Oyster Seed Bed Areas.

Applicant: Harold J. Anderson, Inc.

Bidder	Cash Payment	Price/Acre	Rental	Oil	Gas	Other







**TRACT 36343 - Portion of Block 23, Chandeleur Sound Area, St. Bernard Parish, Louisiana**

All of the lands now or formerly constituting the beds and bottoms of all water bodies of every nature and description the title of which vests in the State of Louisiana, together with all islands arising therein and other lands formed by accretion or by reliction, where allowed by law, excepting tax adjudicated lands, and not presently under mineral lease on June 9, 2004, situated in St. Bernard Parish, Louisiana, and more particularly described as follows: Beginning at a point having Coordinates of X = 2,630,274.00 and Y = 435,157.00; thence South 8,383.00 feet to a point having Coordinates of X = 2,630,274.00 and Y = 426,774.00; thence West 15,758.00 feet to a point having Coordinates of X = 2,614,516.00 and Y = 426,774.00; thence North 8,383.00 feet to a point having Coordinates of X = 2,614,516.00 and Y = 435,157.00; thence East 15,758.00 feet to the point of beginning, **LESS AND EXCEPT** all that portion of State Lease No. 17960 that lies within the above described tract, more particularly described as follows: Beginning at a point having Coordinates of X = 2,620,179.24 and Y = 433,492.16; thence North 85 degrees 38 minutes 58 seconds East 2,044.49 feet to a point within Block 23, Chandeleur Sound Area, having Coordinates of X = 2,622,217.84 and Y = 433,647.25; thence North 88 degrees 09 minutes 13 seconds East 5,135.49 feet to a point having Coordinates of X = 2,627,350.66 and Y = 433,812.71; thence South 87 degrees 54 minutes 56 seconds East 751.47 feet to a point having Coordinates of X = 2,628,101.63 and Y = 433,785.38; thence South 00 degrees 57 minutes 18 seconds East 5,606.27 feet to a point having Coordinates of X = 2,628,195.07 and Y = 428,179.89; thence North 89 degrees 59 minutes 55 seconds West 425.30 feet to a point having Coordinates of X = 2,627,769.77 and Y = 428,179.90; thence South 88 degrees 39 minutes 49 seconds West 5,370.68 feet to a point having Coordinates of X = 2,622,400.55 and Y = 428,054.65; thence North 84 degrees 52 minutes 15 seconds West 2,230.09 feet to a point having Coordinates of X = 2,620,179.39 and Y = 428,254.02; thence North 00 degrees 00 minutes 06 seconds West 5,238.14 feet to the point of beginning, containing approximately 990 acres, containing approximately **1,338 acres**, all as more particularly outlined on a plat on file in the Office of Mineral Resources, Department of Natural Resources. All bearings, distances and coordinates are based on Louisiana Coordinate System of 1927, (North or South Zone), where applicable.

NOTE: The above description of the Tract nominated for lease has been provided and corrected, where required, exclusively by the nomination party. Any mineral lease selected from this Tract and awarded by the Louisiana State Mineral Board shall be without warranty of any kind, either express, implied, or statutory, including, but not limited to, the implied warranties of merchantability and fitness for a particular purpose. Should the mineral lease awarded by the Louisiana State Mineral Board be subsequently modified, cancelled or abrogated due to the existence of conflicting leases, operating agreements, private claims or other future obligations or conditions which may affect all or any portion

of the leased Tract, it shall not relieve the Lessee of the obligation to pay any bonus due thereon to the Louisiana State Mineral Board, nor shall the Louisiana State Mineral Board be obligated to refund any consideration paid by the Lessor prior to such modification, cancellation, or abrogation, including, but not limited to, bonuses, rentals and royalties.

NOTE: The Office of Mineral Resources will require a minimum bonus of \$190 per acre and a minimum royalty of 22%.

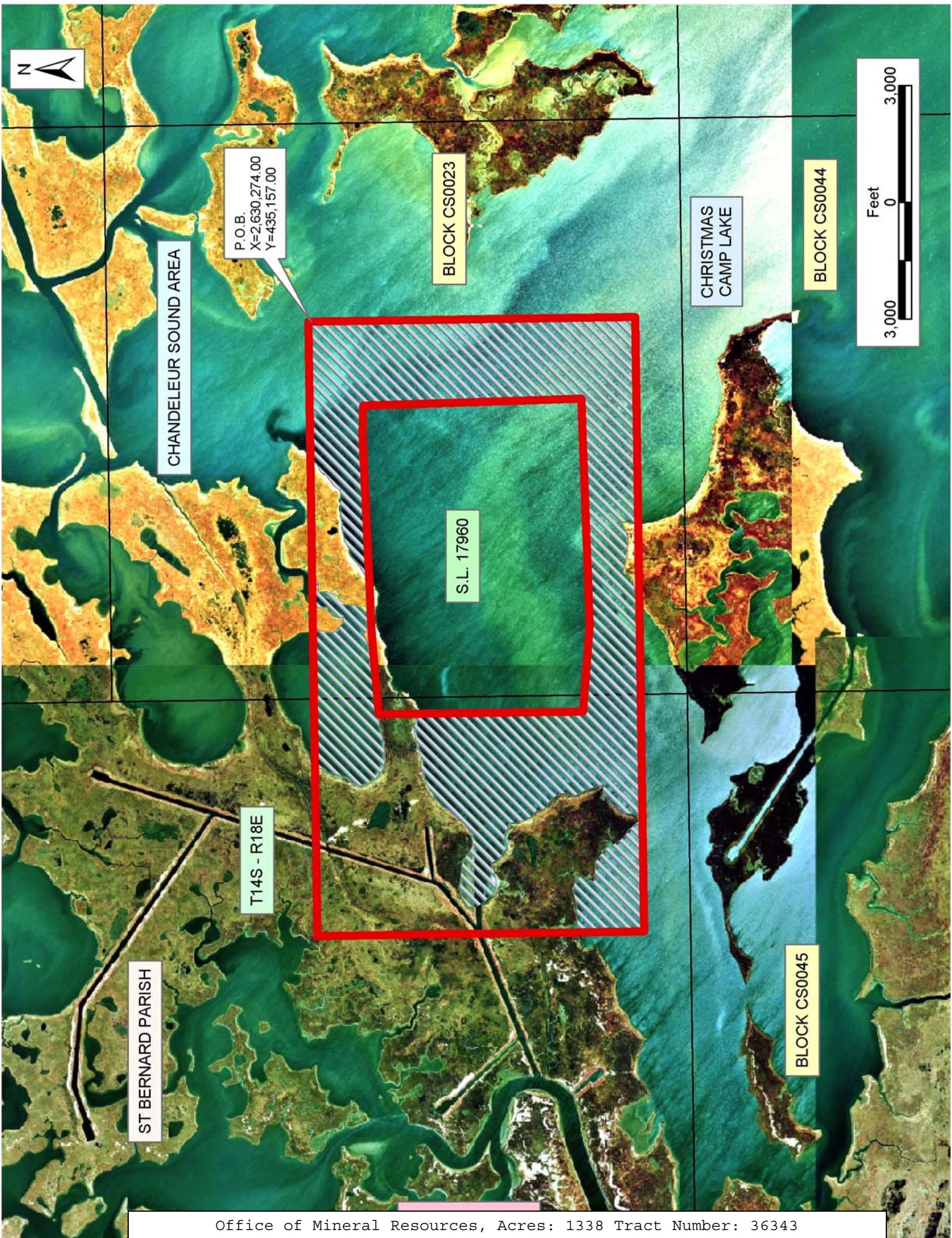
NOTE: The State of Louisiana does hereby reserve, and this lease shall be subject to, the imprescriptible right of surface use in the nature of a servitude in favor of the Department of Natural Resources, including its Offices and Commissions, for the sole purpose of implementing, constructing, servicing and maintaining approved coastal zone management and/or restoration projects. Utilization of any and all rights derived under this lease by the mineral lessee, its agents, successors or assigns, shall not interfere with nor hinder the reasonable surface use by the Department of Natural Resources, its Offices or Commissions, as herein above reserved.

NOTE: The Department of Wildlife and Fisheries has designated certain areas in the coastal waters of the State of Louisiana as Oyster Seed Bed Areas. The exact location of those Seed Bed Areas must be obtained from the Department of Wildlife and Fisheries and any work done under a mineral lease from the State of Louisiana may necessarily be conducted in conformity with the rules and regulations promulgated by the said Department of Wildlife and Fisheries for Oyster Seed Bed Areas.

Applicant: Harold J. Anderson, Inc.

Bidder	Cash Payment	Price/Acre	Rental	Oil	Gas	Other







**TRACT 36344 - Cameron Parish, Louisiana**

All of the lands now or formerly constituting the beds and bottoms of all water bodies of every nature and description the title of which vests in the State of Louisiana, together with all islands arising therein and other lands formed by accretion or by reliction, where allowed by law, excepting tax adjudicated lands, and not presently under mineral lease on June 9, 2004, situated in Cameron Parish, Louisiana, and more particularly described as follows: Beginning at a point having Coordinates of X = 1,212,327.37 and Y = 447,645.00; thence West 10,815.47 feet to a point on the Texas Louisiana boundary line having Coordinates of X = 1,201,511.90 and Y = 447,645.00; thence North 56 degrees 32 minutes 33 seconds East 81.62 feet along said Texas Louisiana boundary line to a point having Coordinates of X = 1,201,580.00 and Y = 447,690.00; thence North 65 degrees 25 minutes 23 seconds East 3,390.13 feet along said Texas Louisiana boundary line to a point having Coordinates of X = 1,204,663.00 and Y = 449,100.00; thence North 35 degrees 51 minutes 28 seconds East 1,885.32 feet along said Texas Louisiana boundary line to a point having Coordinates of X = 1,205,767.37 and Y = 450,628.00; thence East 6,560.00 feet to a point having Coordinates of X = 1,212,327.37 and Y = 450,628.00; thence South 2,983.00 feet to the point of beginning, containing approximately **558.60 acres, LESS AND EXCEPT** that portion thereof, if any, located West of the boundary line between the States of Texas and Louisiana as determined by the report of the Special Master and adjudicated by the Supreme Court of the United States in litigation styled **Texas v. Louisiana, et al No. 36 Original**, or as otherwise approved by said court, all as more particularly outlined on a plat on file in the Office of Mineral Resources, Department of Natural Resources. All bearings, distances and coordinates are based on Louisiana Coordinate System of 1927, (North or South Zone), where applicable.

NOTE: The above description of the Tract nominated for lease has been provided and corrected, where required, exclusively by the nomination party. Any mineral lease selected from this Tract and awarded by the Louisiana State Mineral Board shall be without warranty of any kind, either express, implied, or statutory, including, but not limited to, the implied warranties of merchantability and fitness for a particular purpose. Should the mineral lease awarded by the Louisiana State Mineral Board be subsequently modified, cancelled or abrogated due to the existence of conflicting leases, operating agreements, private claims or other future obligations or conditions which may affect all or any portion of the leased Tract, it shall not relieve the Lessee of the obligation to pay any bonus due thereon to the Louisiana State Mineral Board, nor shall the Louisiana State Mineral Board be obligated to refund any consideration paid by the Lessor prior to such modification, cancellation, or abrogation, including, but not limited to, bonuses, rentals and royalties.

NOTE: The State of Louisiana does hereby reserve, and this lease shall be subject to, the imprescriptible right of surface use in the nature of a servitude in favor of the Department of Natural Resources, including its

Offices and Commissions, for the sole purpose of implementing, constructing, servicing and maintaining approved coastal zone management and/or restoration projects. Utilization of any and all rights derived under this lease by the mineral lessee, its agents, successors or assigns, shall not interfere with nor hinder the reasonable surface use by the Department of Natural Resources, its Offices or Commissions, as herein above reserved.

Applicant: Stephen M. Jenkins, Inc.

Bidder	Cash Payment	Price/Acre	Rental	Oil	Gas	Other



CAMERON PARISH

SABINE LAKE

P.O.B.  
X=1,212,327.37  
Y=447,645.00

LA

TX

SL 16095

SL 17131





**TRACT 36345 - Cameron Parish, Louisiana**

All of the lands now or formerly constituting the beds and bottoms of all water bodies of every nature and description the title of which vests in the State of Louisiana, together with all islands arising therein and other lands formed by accretion or by reliction, where allowed by law, excepting tax adjudicated lands, and not presently under mineral lease on June 9, 2004, situated in Cameron Parish, Louisiana, and more particularly described as follows: Beginning at a point being on the North line of State Lease No. 16095 having Coordinates of X = 1,220,857.37 and Y = 447,645.00; thence West 5,957.37 feet along the North line of said State Lease No. 16095 to its Northwest corner, said point having Coordinates of X = 1,214,900.00 and Y = 447,645.00; thence West 2,572.63 feet to a point having Coordinates of X = 1,212,327.37 and Y = 447,645.00; thence North 2,983.00 feet to a point having Coordinates of X = 1,212,327.37 and Y = 450,628.00; thence East 8,530.00 feet to a point having Coordinates of X = 1,220,857.37 and Y = 450,628.00; thence South 2,983.00 feet to the point of beginning, containing approximately **584.13 acres**, all as more particularly outlined on a plat on file in the Office of Mineral Resources, Department of Natural Resources. All bearings, distances and coordinates are based on Louisiana Coordinate System of 1927, (North or South Zone), where applicable.

NOTE: The above description of the Tract nominated for lease has been provided and corrected, where required, exclusively by the nomination party. Any mineral lease selected from this Tract and awarded by the Louisiana State Mineral Board shall be without warranty of any kind, either express, implied, or statutory, including, but not limited to, the implied warranties of merchantability and fitness for a particular purpose. Should the mineral lease awarded by the Louisiana State Mineral Board be subsequently modified, cancelled or abrogated due to the existence of conflicting leases, operating agreements, private claims or other future obligations or conditions which may affect all or any portion of the leased Tract, it shall not relieve the Lessee of the obligation to pay any bonus due thereon to the Louisiana State Mineral Board, nor shall the Louisiana State Mineral Board be obligated to refund any consideration paid by the Lessor prior to such modification, cancellation, or abrogation, including, but not limited to, bonuses, rentals and royalties.

NOTE: The State of Louisiana does hereby reserve, and this lease shall be subject to, the imprescriptible right of surface use in the nature of a servitude in favor of the Department of Natural Resources, including its Offices and Commissions, for the sole purpose of implementing, constructing, servicing and maintaining approved coastal zone management and/or restoration projects. Utilization of any and all rights derived under this lease by the mineral lessee, its agents, successors or assigns, shall not interfere with nor hinder the reasonable surface use by the Department of Natural Resources, its Offices or Commissions, as herein above reserved.

Applicant: Stephen M. Jenkins, Inc

Bidder	Cash Payment	Price/Acre	Rental	Oil	Gas	Other

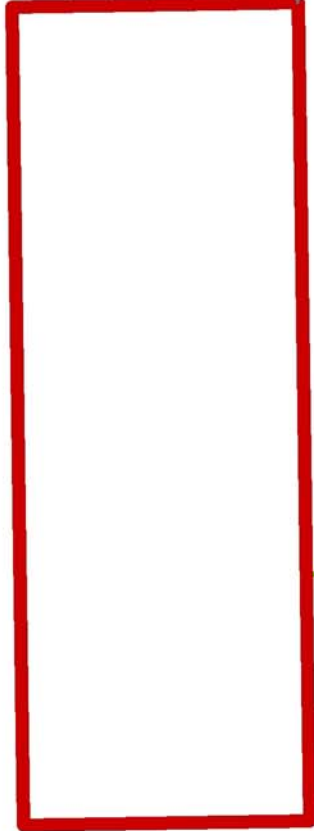


TX

LA

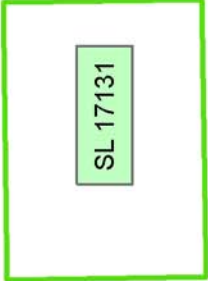
CAMERON PARISH

SABINE LAKE



P.O.B.  
X=1,220,857.37  
Y=447,645.00

SL 16095



SL 17131

SL 16096



**TRACT 36346 - Plaquemines Parish, Louisiana**

All of the lands now or formerly constituting the beds and bottoms of all water bodies of every nature and description the title of which vests in the State of Louisiana, together with all islands arising therein and other lands formed by accretion or by reliction, where allowed by law, excepting tax adjudicated lands, and not presently under mineral lease on June 9, 2004, situated in Plaquemines Parish, Louisiana, and more particularly described as follows: Beginning at a point having Coordinates of X = 2,439,102.00 and Y = 431,836.00; thence South 18,480.00 feet to a point having Coordinates of X = 2,439,102.00 and Y = 413,356.00; thence West 9,699.36 feet to a point on the East line of State Lease No. 17265 having Coordinates of X = 2,429,402.64 and Y = 413,356.00; thence North 25 degrees 07 minutes 30 seconds East 6,003.29 feet along the East line of said State Lease No. 17265 to its Northeast corner, also being a point on the South line of State Lease No. 17264 having Coordinates of X = 2,431,951.60 and Y = 418,791.28; thence along the boundary of said State Lease No. 17264 the following courses: South 64 degrees 52 minutes 30 seconds East 1,700.00 feet, North 25 degrees 07 minutes 30 seconds East 2,566.11 feet and North 63 degrees 12 minutes 27 seconds West 13,237.43 feet to a point on the North line of said State Lease No. 17264 having Coordinates of X = 2,422,764.00 and Y = 426,359.71; thence North 5,476.29 feet to a point having Coordinates of X = 2,422,764.00 and Y = 431,836.00; thence East 16,338.00 feet to the point of beginning, containing approximately **506 acres**, all as more particularly outlined on a plat on file in the Office of Mineral Resources, Department of Natural Resources. All bearings, distances and coordinates are based on Louisiana Coordinate System of 1927, (North or South Zone), where applicable.

NOTE: The above description of the Tract nominated for lease has been provided and corrected, where required, exclusively by the nomination party. Any mineral lease selected from this Tract and awarded by the Louisiana State Mineral Board shall be without warranty of any kind, either express, implied, or statutory, including, but not limited to, the implied warranties of merchantability and fitness for a particular purpose. Should the mineral lease awarded by the Louisiana State Mineral Board be subsequently modified, cancelled or abrogated due to the existence of conflicting leases, operating agreements, private claims or other future obligations or conditions which may affect all or any portion of the leased Tract, it shall not relieve the Lessee of the obligation to pay any bonus due thereon to the Louisiana State Mineral Board, nor shall the Louisiana State Mineral Board be obligated to refund any consideration paid by the Lessor prior to such modification, cancellation, or abrogation, including, but not limited to, bonuses, rentals and royalties.

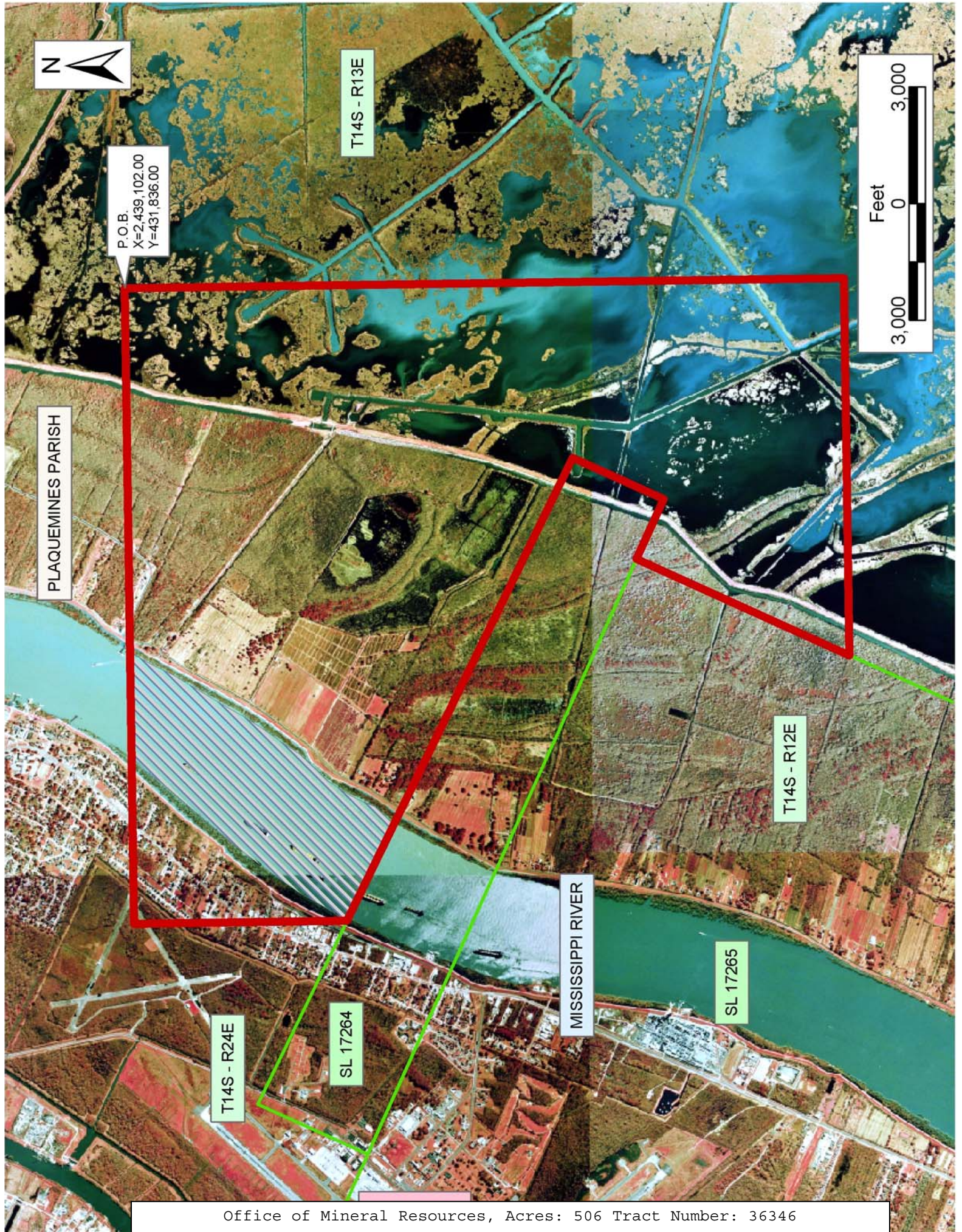
NOTE: The State of Louisiana does hereby reserve, and this lease shall be subject to, the imprescriptible right of surface use in the nature of a servitude in favor of the Department of Natural Resources, including its Offices and Commissions, for the sole purpose of implementing, constructing, servicing and maintaining approved coastal zone management

and/or restoration projects. Utilization of any and all rights derived under this lease by the mineral lessee, its agents, successors or assigns, shall not interfere with nor hinder the reasonable surface use by the Department of Natural Resources, its Offices or Commissions, as herein above reserved.

Applicant: Granger Exploration

Bidder	Cash Payment	Price/Acre	Rental	Oil	Gas	Other





P.O.B.  
X=2,439,102.00  
Y=431,836.00

T14S - R13E



PLAQUEMINES PARISH

T14S - R12E

MISSISSIPPI RIVER

SL 17265

T14S - R24E

SL 17264