

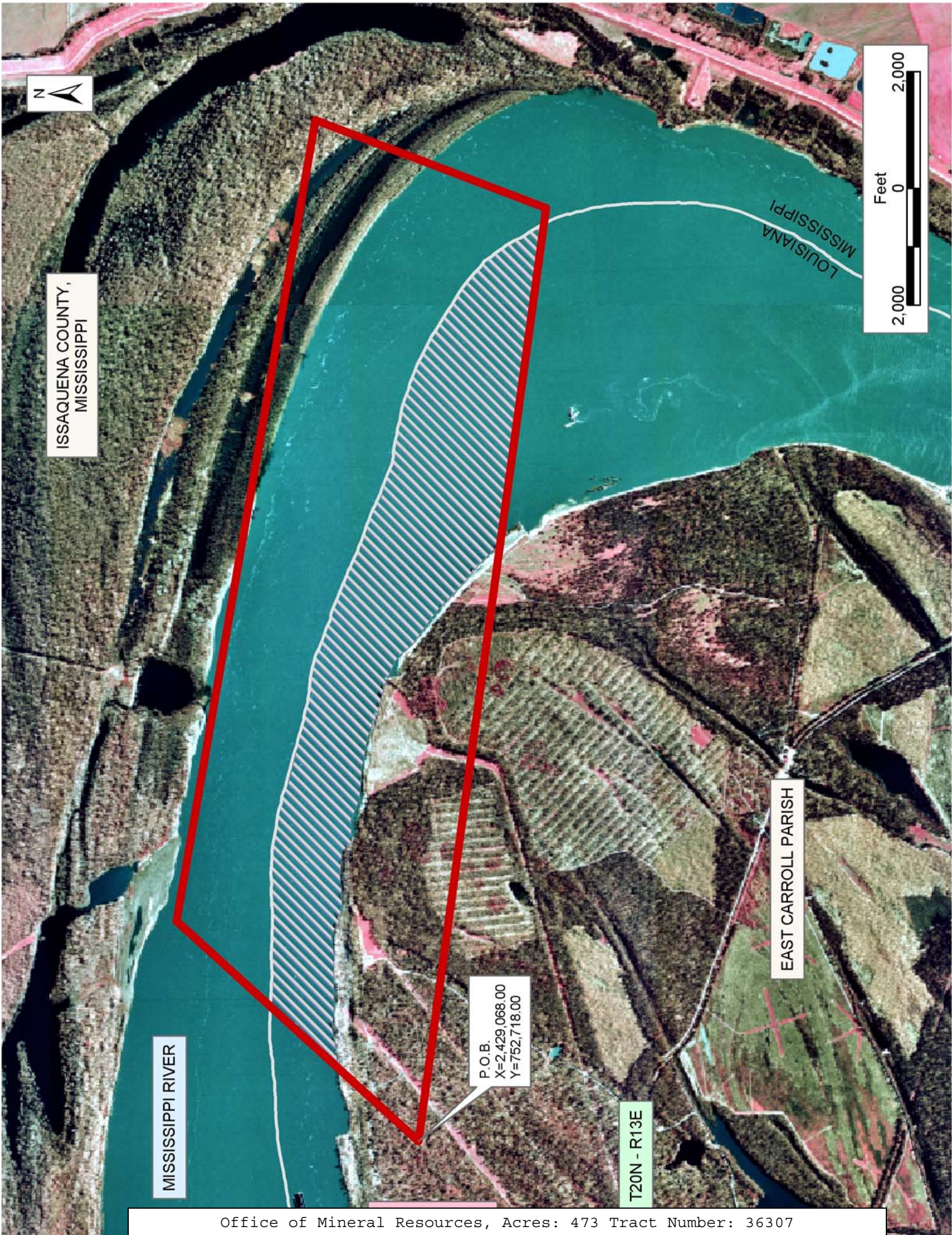
**TRACT 36307 - East Carroll Parish, Louisiana**

All of the lands now or formerly constituting the beds and bottoms of all water bodies of every nature and description the title of which vests in the State of Louisiana, together with all islands arising therein and other lands formed by accretion or by reliction, where allowed by law, excepting tax adjudicated lands, and not presently under mineral lease on June 9, 2004, situated in East Carroll Parish, Louisiana, and more particularly described as follows: Beginning at a point having Coordinates of X = 2,429,068.00 and Y = 752,718.00; thence North 42 degrees 38 minutes 28 seconds East 5,600.79 feet to a point having Coordinates of X = 2,432,862.00 and Y = 756,838.00; thence South 79 degrees 52 minutes 46 seconds East 13,908.41 feet to a point having Coordinates of X = 2,446,554.00 and Y = 754,394.00; thence South 21 degrees 08 minutes 12 seconds West 4,226.34 feet to a point having Coordinates of X = 2,445,030.00 and Y = 750,452.00; thence North 81 degrees 55 minutes 13 seconds West 16,122.04 feet to the point of beginning, containing approximately **473 acres**, all as more particularly outlined on a plat on file in the Office of Mineral Resources, Department of Natural Resources. All bearings, distances and coordinates are based on Louisiana Coordinate System of 1927, (North or South Zone), where applicable.

NOTE: The above description of the Tract nominated for lease has been provided and corrected, where required, exclusively by the nomination party. Any mineral lease selected from this Tract and awarded by the Louisiana State Mineral Board shall be without warranty of any kind, either express, implied, or statutory, including, but not limited to, the implied warranties of merchantability and fitness for a particular purpose. Should the mineral lease awarded by the Louisiana State Mineral Board be subsequently modified, cancelled or abrogated due to the existence of conflicting leases, operating agreements, private claims or other future obligations or conditions which may affect all or any portion of the leased Tract, it shall not relieve the Lessee of the obligation to pay any bonus due thereon to the Louisiana State Mineral Board, nor shall the Louisiana State Mineral Board be obligated to refund any consideration paid by the Lessor prior to such modification, cancellation, or abrogation, including, but not limited to, bonuses, rentals and royalties.

Applicant: Troy L. Waters

Bidder	Cash Payment	Price/Acre	Rental	Oil	Gas	Other



ISSAQUENA COUNTY,  
MISSISSIPPI

MISSISSIPPI RIVER

P.O.B.  
X=2,429,068.00  
Y=752,718.00

T20N - R13E

EAST CARROLL PARISH



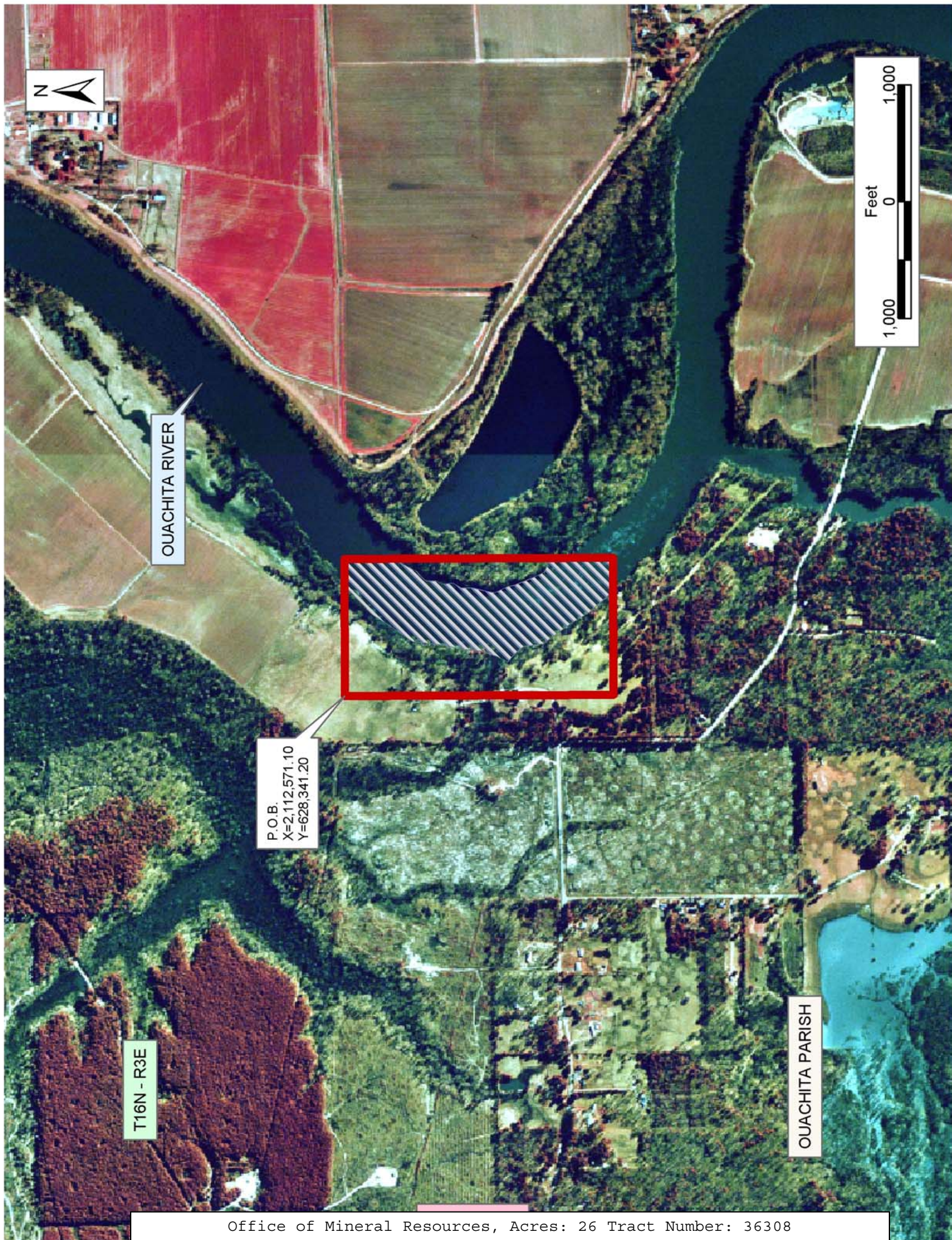
**TRACT 36308 - Ouachita Parish, Louisiana**

All of the lands now or formerly constituting the beds and bottoms of all water bodies of every nature and description the title of which vests in the State of Louisiana, together with all islands arising therein and other lands formed by accretion or by reliction, where allowed by law, excepting tax adjudicated lands, and not presently under mineral lease on June 9, 2004, situated in Ouachita Parish, Louisiana, and more particularly described as follows: Beginning at a point having Coordinates of X = 2,112,571.10 and Y = 628,341.20; thence East 1,172.90 feet, to a point having a Coordinate of X = 2,113,744.00 and Y = 628,341.20; thence South 2,299.50 feet to a point having a Coordinate of X = 2,113,744.0 and Y = 626,041.70; thence West 1,172.90 feet to a point having a Coordinate of X = 2,112,571.10 and Y = 626,041.70; thence North 2,299.50 feet to the point of beginning, containing approximately **26 acres**, all as more particularly outlined on a plat on file in the Office of Mineral Resources, Department of Natural Resources. All bearings, distances and coordinates are based on Louisiana Coordinate System of 1927, (North or South Zone), where applicable.

NOTE: The above description of the Tract nominated for lease has been provided and corrected, where required, exclusively by the nomination party. Any mineral lease selected from this Tract and awarded by the Louisiana State Mineral Board shall be without warranty of any kind, either express, implied, or statutory, including, but not limited to, the implied warranties of merchantability and fitness for a particular purpose. Should the mineral lease awarded by the Louisiana State Mineral Board be subsequently modified, cancelled or abrogated due to the existence of conflicting leases, operating agreements, private claims or other future obligations or conditions which may affect all or any portion of the leased Tract, it shall not relieve the Lessee of the obligation to pay any bonus due thereon to the Louisiana State Mineral Board, nor shall the Louisiana State Mineral Board be obligated to refund any consideration paid by the Lessor prior to such modification, cancellation, or abrogation, including, but not limited to, bonuses, rentals and royalties.

Applicant: Ensign Energy Management, LLC

Bidder	Cash Payment	Price/Acre	Rental	Oil	Gas	Other



Ouachita River

P.O.B.  
X=2,112,571.10  
Y=628,341.20

T16N - R3E

Ouachita Parish

**TRACT 36309 - Red River Parish, Louisiana**

All of the lands now or formerly constituting the beds and bottoms of all water bodies of every nature and description the title of which vests in the State of Louisiana, together with all islands arising therein and other lands formed by accretion or by reliction, where allowed by law, excepting tax adjudicated lands, and not presently under mineral lease on June 9, 2004, situated in Red River Parish, Louisiana, and more particularly described as follows: Beginning at a point having Coordinates of X = 1,718,946.69 and Y = 513,454.43; thence West 6,600 feet to a point having Coordinates of X = 1,712,346.69 and Y = 513,454.43; thence North 5,280 feet to a point having Coordinates of X = 1,712,346.69 and Y = 518,734.43; thence North 89 degrees 41 minutes 01 second East 6,655.57 feet to a point having Coordinates of X = 1,719,002.16 and Y = 518,771.20; thence South 00 degrees 35 minutes 52 seconds West 5,317.06 feet to the point of beginning, containing approximately **112 acres**, all as more particularly outlined on a plat on file in the Office of Mineral Resources, Department of Natural Resources. All bearings, distances and coordinates are based on Louisiana Coordinate System of 1927, (North or South Zone), where applicable.

NOTE: The above description of the Tract nominated for lease has been provided and corrected, where required, exclusively by the nomination party. Any mineral lease selected from this Tract and awarded by the Louisiana State Mineral Board shall be without warranty of any kind, either express, implied, or statutory, including, but not limited to, the implied warranties of merchantability and fitness for a particular purpose. Should the mineral lease awarded by the Louisiana State Mineral Board be subsequently modified, cancelled or abrogated due to the existence of conflicting leases, operating agreements, private claims or other future obligations or conditions which may affect all or any portion of the leased Tract, it shall not relieve the Lessee of the obligation to pay any bonus due thereon to the Louisiana State Mineral Board, nor shall the Louisiana State Mineral Board be obligated to refund any consideration paid by the Lessor prior to such modification, cancellation, or abrogation, including, but not limited to, bonuses, rentals and royalties.

Applicant: Kevin J. Severson

Bidder	Cash Payment	Price/Acre	Rental	Oil	Gas	Other



RED RIVER PARISH

RED RIVER

T13N - R10W

AO 0242

P.O.B.  
X=1,718,946.69  
Y=513,454.43



**TRACT 36310 - Evangeline and Rapides Parishes, Louisiana**

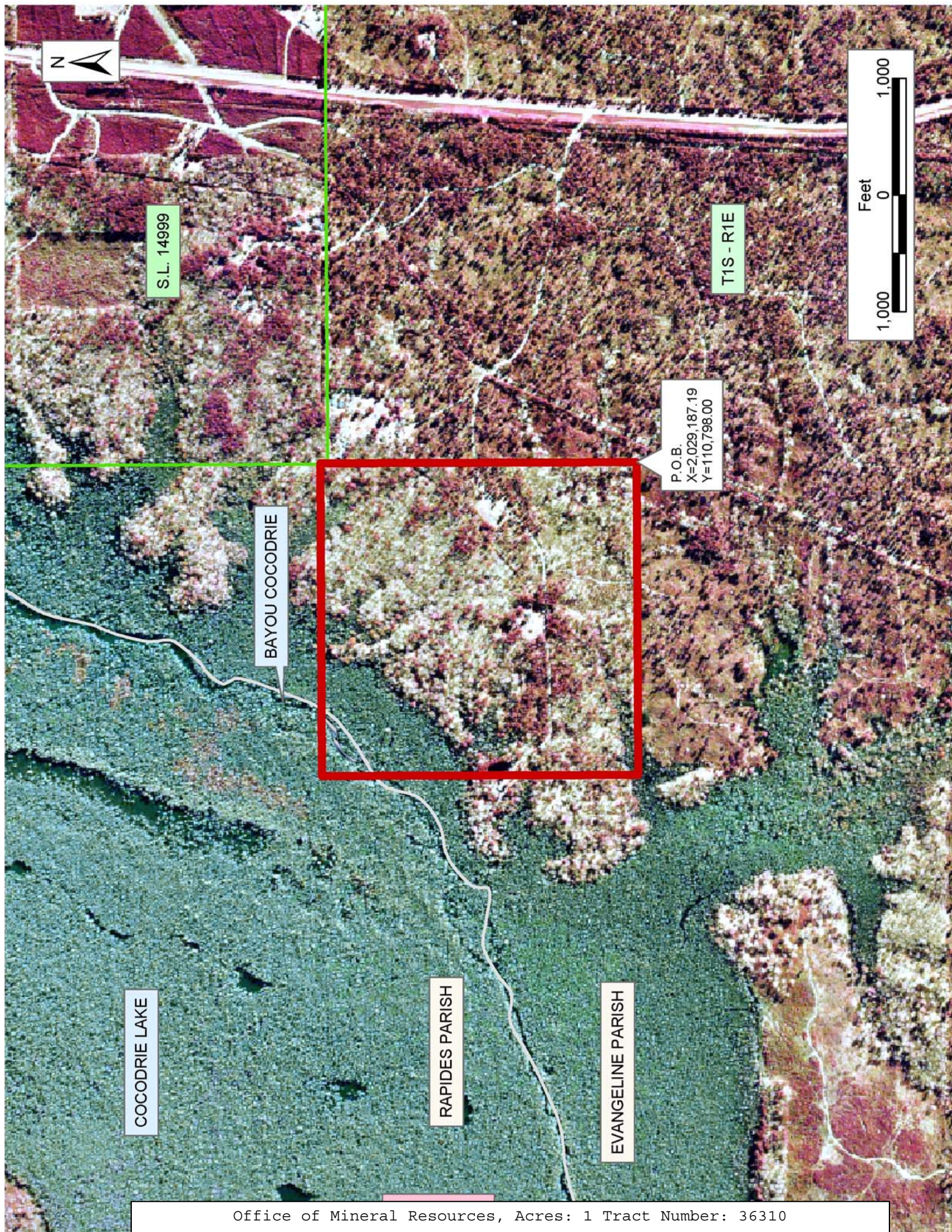
All of the lands now or formerly constituting the beds and bottoms of all water bodies of every nature and description the title of which vests in the State of Louisiana, together with all islands arising therein and other lands formed by accretion or by reliction, where allowed by law, excepting tax adjudicated lands, and not presently under mineral lease on June 9, 2004, situated in Evangeline and Rapides Parishes, Louisiana, and more particularly described as follows: Beginning at a point having Coordinates of X = 2,029,187.19 and Y = 110,798.00; thence West 2,683.19 feet to a point having Coordinates of X = 2,026,504.00 and Y = 110,798.00; thence North 2,714.00 feet to a point having Coordinates of X = 2,026,504.00 and Y = 113,512.00; thence East 2,683.11 feet to a point having Coordinates of X = 2,029,187.11 and Y = 113,512.00; thence South 00 degrees 00 minutes 06 seconds East 2,714.00 feet to the point of beginning, **LESS AND EXCEPT** any portion of State Lease No. 14999, as amended that may lie within the above described tract, containing approximately **1 acre**, all as more particularly outlined on a plat on file in the Office of Mineral Resources, Department of Natural Resources. All bearings, distances and coordinates are based on Louisiana Coordinate System of 1927, (North or South Zone), where applicable.

NOTE: The above description of the Tract nominated for lease has been provided and corrected, where required, exclusively by the nomination party. Any mineral lease selected from this Tract and awarded by the Louisiana State Mineral Board shall be without warranty of any kind, either express, implied, or statutory, including, but not limited to, the implied warranties of merchantability and fitness for a particular purpose. Should the mineral lease awarded by the Louisiana State Mineral Board be subsequently modified, cancelled or abrogated due to the existence of conflicting leases, operating agreements, private claims or other future obligations or conditions which may affect all or any portion of the leased Tract, it shall not relieve the Lessee of the obligation to pay any bonus due thereon to the Louisiana State Mineral Board, nor shall the Louisiana State Mineral Board be obligated to refund any consideration paid by the Lessor prior to such modification, cancellation, or abrogation, including, but not limited to, bonuses, rentals and royalties.

Bidder	Cash Payment	Price/Acre	Rental	Oil	Gas	Other

Applicant: Emily Kyle Land Services, Inc.





S.L. 14999

T1S - R1E

P.O.B.  
X=2,029,187.19  
Y=110,798.00

BAYOU COCODRIE

COCODRIE LAKE

RAPIDES PARISH

EVANGELINE PARISH

Feet  
0 1,000

**TRACT 36311 - Pointe Coupee Parish, Louisiana**

All of the lands now or formerly constituting the beds and bottoms of all water bodies of every nature and description the title of which vests in the State of Louisiana, together with all islands arising therein and other lands formed by accretion or by reliction, where allowed by law, excepting tax adjudicated lands, and not presently under mineral lease on June 9, 2004, situated in Pointe Coupee Parish, Louisiana, and more particularly described as follows: Beginning at a point having Coordinates of X = 1,983,403.48 and Y = 700,596.72; thence North 47 degrees 00 minutes 00 seconds West 7,000 feet to a point having Coordinates of X = 1,978,284.00 and Y = 705,370.71; thence North 43 degrees 00 minutes 00 seconds East 18,000 feet to a point having Coordinates of X = 1,990,559.97 and Y = 718,535.08; thence South 47 degrees 00 minutes 00 Seconds East 7,000 feet to a point having Coordinates of X = 1,995,679.45 and Y = 713,761.09; thence South 43 degrees 00 minutes 00 seconds West 18,000 feet to the point of beginning, containing approximately **59 acres**, all as more particularly outlined on a plat on file in the Office of Mineral Resources, Department of Natural Resources. All bearings, distances and coordinates are based on Louisiana Coordinate System of 1927, (North or South Zone), where applicable.

NOTE: The above description of the Tract nominated for lease has been provided and corrected, where required, exclusively by the nomination party. Any mineral lease selected from this Tract and awarded by the Louisiana State Mineral Board shall be without warranty of any kind, either express, implied, or statutory, including, but not limited to, the implied warranties of merchantability and fitness for a particular purpose. Should the mineral lease awarded by the Louisiana State Mineral Board be subsequently modified, cancelled or abrogated due to the existence of conflicting leases, operating agreements, private claims or other future obligations or conditions which may affect all or any portion of the leased Tract, it shall not relieve the Lessee of the obligation to pay any bonus due thereon to the Louisiana State Mineral Board, nor shall the Louisiana State Mineral Board be obligated to refund any consideration paid by the Lessor prior to such modification, cancellation, or abrogation, including, but not limited to, bonuses, rentals and royalties.

Bidder	Cash Payment	Price/Acre	Rental	Oil	Gas	Other

Applicant: Stewart C. Delcambre



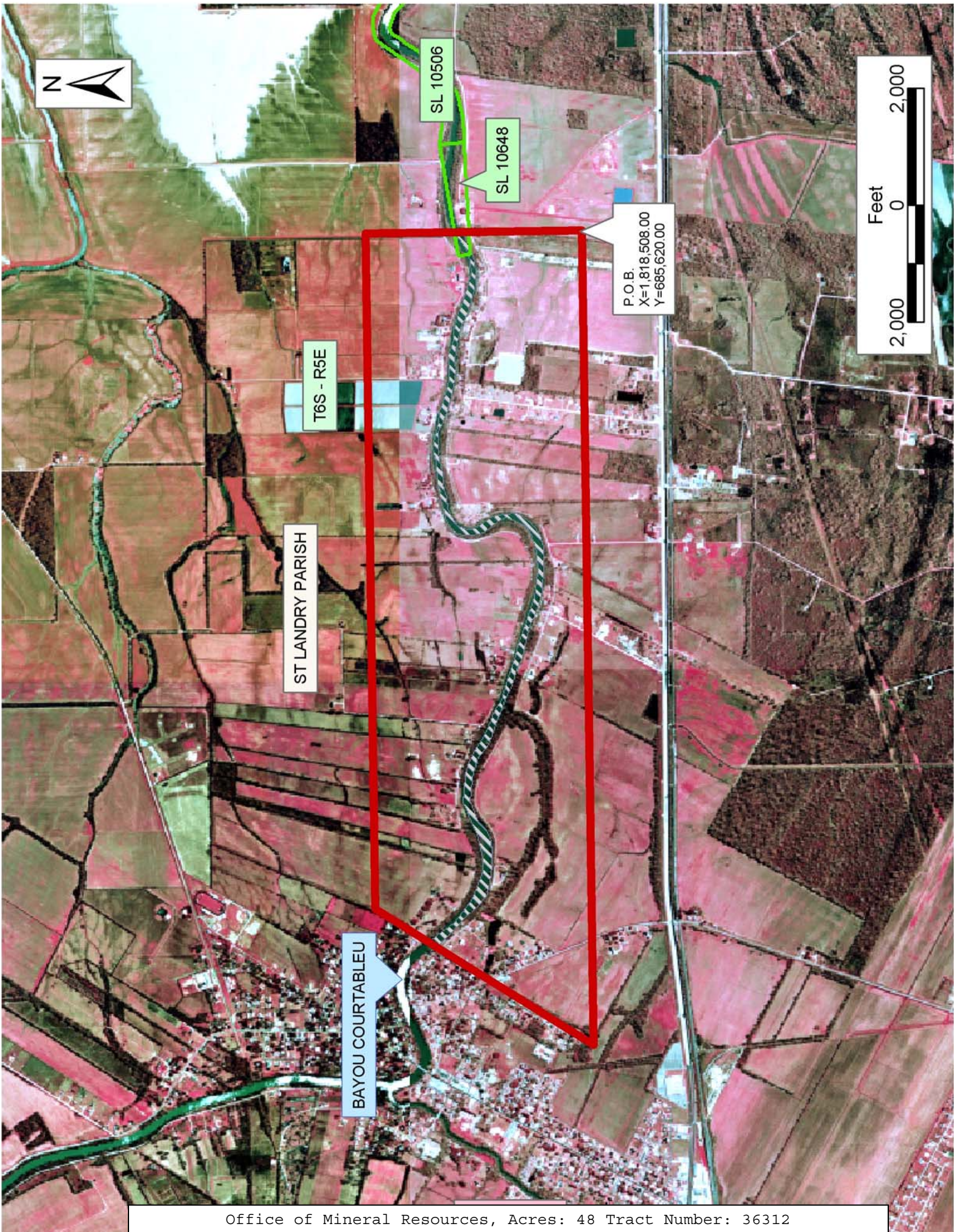
**TRACT 36312 - St. Landry Parish, Louisiana**

All of the lands now or formerly constituting the beds and bottoms of all water bodies of every nature and description the title of which vests in the State of Louisiana, together with all islands arising therein and other lands formed by accretion or by reliction, where allowed by law, excepting tax adjudicated lands, and not presently under mineral lease on June 9, 2004, situated in St. Landry Parish, Louisiana, and more particularly described as follows: Beginning at a point having Coordinates of X = 1,818,508.00 and Y = 685,620.00; thence West 13,950.00 feet to a point having Coordinates of X = 1,804,558.00 and Y = 685,620.00; thence North 32 degrees 49 minutes 28 seconds East 4,405.38 feet to a point having Coordinates of X = 1,806,946.00 and Y = 689,322.00; thence East 11,562.00 feet to a point having Coordinates of X = 1,818,508.00 and Y = 689,322.00; thence South 3,702.00 feet to the point of beginning, **LESS AND EXCEPT** any portion of State Lease No. 10648, as amended that may lie within the above described tract, containing approximately **48 acres**, all as more particularly outlined on a plat on file in the Office of Mineral Resources, Department of Natural Resources. All bearings, distances and coordinates are based on Louisiana Coordinate System of 1927, (North or South Zone), where applicable.

NOTE: The above description of the Tract nominated for lease has been provided and corrected, where required, exclusively by the nomination party. Any mineral lease selected from this Tract and awarded by the Louisiana State Mineral Board shall be without warranty of any kind, either express, implied, or statutory, including, but not limited to, the implied warranties of merchantability and fitness for a particular purpose. Should the mineral lease awarded by the Louisiana State Mineral Board be subsequently modified, cancelled or abrogated due to the existence of conflicting leases, operating agreements, private claims or other future obligations or conditions which may affect all or any portion of the leased Tract, it shall not relieve the Lessee of the obligation to pay any bonus due thereon to the Louisiana State Mineral Board, nor shall the Louisiana State Mineral Board be obligated to refund any consideration paid by the Lessor prior to such modification, cancellation, or abrogation, including, but not limited to, bonuses, rentals and royalties.

Bidder	Cash Payment	Price/Acre	Rental	Oil	Gas	Other

Applicant: Harold J. Anderson, Inc.



**TRACT 36313 - Calcasieu Parish, Louisiana**

All of the lands now or formerly constituting the beds and bottoms of all water bodies of every nature and description the title of which vests in the State of Louisiana, together with all islands arising therein and other lands formed by accretion or by reliction, where allowed by law, excepting tax adjudicated lands, and not presently under mineral lease on June 9, 2004, situated in Calcasieu Parish, Louisiana, and more particularly described as follows: Beginning at a point having Coordinates of X = 1,351,700.00 and Y = 525,300.00; thence West 16,000.00 feet to a point having Coordinates of X = 1,335,700.00 and Y = 525,300.00; thence North 6,000.00 feet to a point having Coordinates of X = 1,335,700.00 and Y = 531,300.00; thence East 16,000.00 feet to a point having Coordinates of X = 1,351,700.00 and Y = 531,300.00; thence South 6,000.00 feet to the point of beginning, containing approximately **72 acres**, all as more particularly outlined on a plat on file in the Office of Mineral Resources, Department of Natural Resources. All bearings, distances and coordinates are based on Louisiana Coordinate System of 1927, (North or South Zone), where applicable.

NOTE: The above description of the Tract nominated for lease has been provided and corrected, where required, exclusively by the nomination party. Any mineral lease selected from this Tract and awarded by the Louisiana State Mineral Board shall be without warranty of any kind, either express, implied, or statutory, including, but not limited to, the implied warranties of merchantability and fitness for a particular purpose. Should the mineral lease awarded by the Louisiana State Mineral Board be subsequently modified, cancelled or abrogated due to the existence of conflicting leases, operating agreements, private claims or other future obligations or conditions which may affect all or any portion of the leased Tract, it shall not relieve the Lessee of the obligation to pay any bonus due thereon to the Louisiana State Mineral Board, nor shall the Louisiana State Mineral Board be obligated to refund any consideration paid by the Lessor prior to such modification, cancellation, or abrogation, including, but not limited to, bonuses, rentals and royalties.

NOTE: The State of Louisiana does hereby reserve, and this lease shall be subject to, the imprescriptible right of surface use in the nature of a servitude in favor of the Department of Natural Resources, including its Offices and Commissions, for the sole purpose of implementing, constructing, servicing and maintaining approved coastal zone management and/or restoration projects. Utilization of any and all rights derived under this lease by the mineral lessee, its agents, successors or assigns, shall not interfere with nor hinder the reasonable surface use by the Department of Natural Resources, its Offices or Commissions, as herein above reserved.



Applicant: Basin Properties, Inc.

Bidder	Cash Payment	Price/Acre	Rental	Oil	Gas	Other



P.O.B.  
X=1,351,700.00  
Y=525,300.00



CALCASIEU PARISH

T11S - R10W

BAYOU CHOUPIQUE



**TRACT 36314 - St. James Parish, Louisiana**

All of the lands now or formerly constituting the beds and bottoms of all water bodies of every nature and description the title of which vests in the State of Louisiana, together with all islands arising therein and other lands formed by accretion or by reliction, where allowed by law, excepting tax adjudicated lands, and not presently under mineral lease on June 9, 2004, situated in St. James Parish, Louisiana, and more particularly described as follows: Beginning at a point having Coordinates of X = 2,158,525.00 and Y = 509,520.00; thence South 52 degrees 19 minutes 57 seconds West 10,416.01 feet to a point having Coordinates of X = 2,150,280.00 and Y = 503,155.00; thence North 3,245.00 feet to a point having Coordinates of X = 2,150,280.00 and Y = 506,400.00; thence North 10 degrees 10 minutes 32 seconds East 3,169.86 feet to a point having Coordinates of X = 2,150,840.00 and Y = 509,520.00; thence East 7,685.00 feet to the point of beginning, containing approximately **195 acres**, all as more particularly outlined on a plat on file in the Office of Mineral Resources, Department of Natural Resources. All bearings, distances and coordinates are based on Louisiana Coordinate System of 1927, (North or South Zone), where applicable.

NOTE: The above description of the Tract nominated for lease has been provided and corrected, where required, exclusively by the nomination party. Any mineral lease selected from this Tract and awarded by the Louisiana State Mineral Board shall be without warranty of any kind, either express, implied, or statutory, including, but not limited to, the implied warranties of merchantability and fitness for a particular purpose. Should the mineral lease awarded by the Louisiana State Mineral Board be subsequently modified, cancelled or abrogated due to the existence of conflicting leases, operating agreements, private claims or other future obligations or conditions which may affect all or any portion of the leased Tract, it shall not relieve the Lessee of the obligation to pay any bonus due thereon to the Louisiana State Mineral Board, nor shall the Louisiana State Mineral Board be obligated to refund any consideration paid by the Lessor prior to such modification, cancellation, or abrogation, including, but not limited to, bonuses, rentals and royalties.

NOTE: The State of Louisiana does hereby reserve, and this lease shall be subject to, the imprescriptible right of surface use in the nature of a servitude in favor of the Department of Natural Resources, including its Offices and Commissions, for the sole purpose of implementing, constructing, servicing and maintaining approved coastal zone management and/or restoration projects. Utilization of any and all rights derived under this lease by the mineral lessee, its agents, successors or assigns, shall not interfere with nor hinder the reasonable surface use by the Department of Natural Resources, its Offices or Commissions, as herein above reserved.

Applicant: Angelle & Donohue Oil & Gas Properties, Inc.

Bidder	Cash Payment	Price/Acre	Rental	Oil	Gas	Other



P.O.B.  
X=2,158,525.00  
Y=509,520.00

T11S - R4E

T11S - R3E

MISSISSIPPI RIVER

ST JAMES PARISH

**TRACT 36315 - Portion of Block 46, Chandeleur Sound Area, Addition, Revised, St. Bernard Parish, Louisiana**

All of the lands now or formerly constituting the beds and bottoms of all water bodies of every nature and description the title of which vests in the State of Louisiana, together with all islands arising therein and other lands formed by accretion or by reliction, where allowed by law, excepting tax adjudicated lands, and not presently under mineral lease on June 9, 2004, situated in St. Bernard Parish, Louisiana, and more particularly described as follows: Beginning at a point within Block 46, Chandeleur Sound Area, Addition, Revised, having Coordinates of X = 2,630,274.00 and Y = 491,047.00; thence West 15,758.00 feet to a point having Coordinates of X = 2,614,516.00 and Y = 491,047.00; thence North 5,589.00 feet to a point having Coordinates of X = 2,614,516.00 and Y = 496,636.00; thence East 15,758.00 feet to a point having Coordinates of X = 2,630,274.00 and Y = 496,636.00; thence South 5,589.00 feet to the point of beginning, containing approximately **1,764 acres**, all as more particularly outlined on a plat on file in the Office of Mineral Resources, Department of Natural Resources. All bearings, distances and coordinates are based on Louisiana Coordinate System of 1927, (North or South Zone), where applicable.

NOTE: The above description of the Tract nominated for lease has been provided and corrected, where required, exclusively by the nomination party. Any mineral lease selected from this Tract and awarded by the Louisiana State Mineral Board shall be without warranty of any kind, either express, implied, or statutory, including, but not limited to, the implied warranties of merchantability and fitness for a particular purpose. Should the mineral lease awarded by the Louisiana State Mineral Board be subsequently modified, cancelled or abrogated due to the existence of conflicting leases, operating agreements, private claims or other future obligations or conditions which may affect all or any portion of the leased Tract, it shall not relieve the Lessee of the obligation to pay any bonus due thereon to the Louisiana State Mineral Board, nor shall the Louisiana State Mineral Board be obligated to refund any consideration paid by the Lessor prior to such modification, cancellation, or abrogation, including, but not limited to, bonuses, rentals and royalties.

NOTE: The Office of Mineral Resources will require a minimum bonus of \$230 per acre and a minimum royalty of 23%.

NOTE: The State of Louisiana does hereby reserve, and this lease shall be subject to, the imprescriptible right of surface use in the nature of a servitude in favor of the Department of Natural Resources, including its Offices and Commissions, for the sole purpose of implementing, constructing, servicing and maintaining approved coastal zone management and/or restoration projects. Utilization of any and all rights derived under this lease by the mineral lessee, its agents, successors or assigns, shall not interfere with nor hinder the reasonable surface use by the

Department of Natural Resources, its Offices or Commissions, as herein above reserved.

NOTE: The Department of Wildlife and Fisheries has designated certain areas in the coastal waters of the State of Louisiana as Oyster Seed Bed Areas. The exact location of those Seed Bed Areas must be obtained from the Department of Wildlife and Fisheries and any work done under a mineral lease from the State of Louisiana may necessarily be conducted in conformity with the rules and regulations promulgated by the said Department of Wildlife and Fisheries for Oyster Seed Bed Areas.

Applicant: Harold J. Anderson, Inc.

Bidder	Cash Payment	Price/Acre	Rental	Oil	Gas	Other



CHANDELEUR SOUND  
AREA ADDITION, REVISED

BLOCK CX0023



T12S - R18E

P.O.B.  
X=2,630,274.00  
Y=491,047.00

BLOCK CX0046



ST BERNARD PARISH

BAY BOUDREAU



**TRACT 36316 - St. Bernard Parish, Louisiana**

All of the lands now or formerly constituting the beds and bottoms of all water bodies of every nature and description the title of which vests in the State of Louisiana, together with all islands arising therein and other lands formed by accretion or by reliction, where allowed by law, excepting tax adjudicated lands, and not presently under mineral lease on June 9, 2004, situated in St. Bernard Parish, Louisiana, and more particularly described as follows: Beginning at a point having Coordinates of X = 2,588,451.26 and Y = 496,636.00; thence South 8,170.92 feet to the Northwest corner of State Lease No. 17951 having Coordinates of X = 2,588,451.26 and Y = 488,465.08; thence South 2,999.96 feet along the West line of said State Lease No. 17951 to its Southwest corner, also being the Northwest corner of State Lease No. 17976 having Coordinates of X = 2,588,451.26 and Y = 485,465.12; thence along the boundary of said State Lease No. 17976 the following courses and distances: South 90.89 feet and South 01 degrees 43 minutes 35 seconds East 908.58 feet to the Southwest corner of said State Lease No. 17976, also being a point on the boundary of the Biloxi Wildlife Management Area having Coordinates of X = 2,588,478.63 and Y = 484,466.06; thence along the boundary of said Biloxi Wildlife Management Area the following courses and distances: South 01 degrees 43 minutes 35 seconds East 0.61 feet, South 01 degrees 53 minutes 34 seconds East 1,316.57 feet, South 01 degrees 55 minutes 23 seconds East 318.24 feet, South 88 degrees 25 minutes 43 seconds West 1,307.65 feet, South 88 degrees 28 minutes 04 seconds West 1,308.47 feet, South 88 degrees 28 minutes 04 seconds West 1,308.47 feet, South 88 degrees 28 minutes 06 seconds West 1,310.20 feet, North 01 degrees 05 minutes 52 seconds West 461.83 feet, North 01 degrees 00 minutes 18 seconds West 2,134.58 feet, North 01 degrees 38 minutes 25 seconds West 1,007.37 feet, North 02 degrees 10 minutes 58 seconds West 287.35 feet, North 01 degrees 34 minutes 45 seconds West 825.52 feet, North 01 degrees 26 minutes 03 seconds West 352.75 feet, North 02 degrees 58 minutes 47 seconds West 2,114.13 feet, North 02 degrees 30 minutes 16 seconds West 229.18 feet, North 03 degrees 02 minutes 11 seconds West 600.41 feet, South 88 degrees 14 minutes 02 seconds West 2,650.32 feet to the Northeast corner of State Lease No. 17975 having Coordinates of X = 2,580,381.50 and Y = 490,616.74; thence along the boundary of said State Lease No. 17975 the following courses and distances: South 88 degrees 14 minutes 02 seconds West 543.93 feet and South 86 degrees 30 minutes 57 seconds West 2,027.90 feet to the Northwest corner of said State Lease No. 17975, and the Northeast corner of State Lease No. 17770, also being a corner of State Lease No. 17769 having Coordinates of X = 2,577,813.68 and Y = 490,476.73; thence along the boundary of said State Lease No. 17769 and said boundary of Biloxi Wildlife Management Area the following courses and distances: North 02 degrees 52 minutes 58 seconds West 5,341.39 feet and North 03 degrees 50 minutes 37 seconds West 123.80 feet to the Northeast corner of said State Lease No. 17769 and a point on the boundary of said Biloxi Wildlife Management Area having Coordinates of X = 2,577,536.76 and Y = 495,934.88; thence along the boundary of said Biloxi Wildlife Management Area the following courses and distances: North 86 degrees 30 minutes 25 seconds

East 161.58 feet, North 87 degrees 27 minutes 15 seconds East 1,149.34 feet, North 87 degrees 25 minutes 44 seconds East 503.43 feet, North 87 degrees 33 minutes 11 seconds East 816.84 feet, North 87 degrees 02 minutes 54 seconds East 307.19 feet, North 87 degrees 07 minutes 21 seconds East 2,340.25 feet and North 14 degrees 01 minutes 03 seconds West 463.25 feet to a point on the boundary of said Biloxi Wildlife Management Area having Coordinates of X = 2,582,697.14 and Y = 496,636.00; thence East 5,754.12 feet to the point of beginning, **LESS AND EXCEPT** any portion of the above described tract which may lie within the boundaries of the Biloxi Wildlife Management Area, containing approximately **1,320 acres**, all as more particularly outlined on a plat on file in the Office of Mineral Resources, Department of Natural Resources. All bearings, distances and coordinates are based on Louisiana Coordinate System of 1927, (North or South Zone), where applicable.

NOTE: The above description of the Tract nominated for lease has been provided and corrected, where required, exclusively by the nomination party. Any mineral lease selected from this Tract and awarded by the Louisiana State Mineral Board shall be without warranty of any kind, either express, implied, or statutory, including, but not limited to, the implied warranties of merchantability and fitness for a particular purpose. Should the mineral lease awarded by the Louisiana State Mineral Board be subsequently modified, cancelled or abrogated due to the existence of conflicting leases, operating agreements, private claims or other future obligations or conditions which may affect all or any portion of the leased Tract, it shall not relieve the Lessee of the obligation to pay any bonus due thereon to the Louisiana State Mineral Board, nor shall the Louisiana State Mineral Board be obligated to refund any consideration paid by the Lessor prior to such modification, cancellation, or abrogation, including, but not limited to, bonuses, rentals and royalties.

NOTE: The Office of Mineral Resources will require a minimum bonus of \$230 per acre and a minimum royalty of 23%.

NOTE: The State of Louisiana does hereby reserve, and this lease shall be subject to, the imprescriptible right of surface use in the nature of a servitude in favor of the Department of Natural Resources, including its Offices and Commissions, for the sole purpose of implementing, constructing, servicing and maintaining approved coastal zone management and/or restoration projects. Utilization of any and all rights derived under this lease by the mineral lessee, its agents, successors or assigns, shall not interfere with nor hinder the reasonable surface use by the Department of Natural Resources, its Offices or Commissions, as herein above reserved.

NOTE: The Department of Wildlife and Fisheries has designated certain areas in the coastal waters of the State of Louisiana as Oyster Seed Bed Areas. The exact location of those Seed Bed Areas must be obtained from the Department of Wildlife and Fisheries and any work done under a mineral

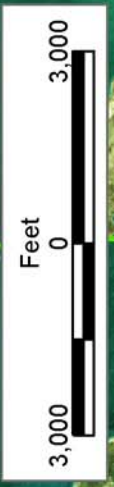
lease from the State of Louisiana may necessarily be conducted in conformity with the rules and regulations promulgated by the said Department of Wildlife and Fisheries for Oyster Seed Bed Areas.

Applicant: Harold J. Anderson, Inc.

Bidder	Cash Payment	Price/Acre	Rental	Oil	Gas	Other



P.O.B.  
X=2,588,451.26  
Y=496,636.00



BILOXI WMA

FALSE MOUTH BAY

S.L. 17975

S.L. 17951

S.L. 17976

S.L. 17770

S.L. 17769

ST BERNARD PARISH

T12S - R17E