

**TRACT 36405 - St. Bernard Parish, Louisiana**

All lands now or formerly constituting the beds and bottoms of water bodies of whatever description and nature owned by the State of Louisiana and located within the geographical boundaries of the Biloxi Wildlife Management Area and not presently under mineral lease by the State of Louisiana as of June 9, 2004, the area being set forth as follows: Beginning at a point on the boundary of the Biloxi Wildlife Management Area, said point also being the Northeast corner of State Lease No. 17976 and the Southeast corner of State Lease No. 17951 having Coordinates of X = 2,593,723.77 and Y = 485,529.22; thence along the boundary of said Biloxi Wildlife Management Area, and said State Lease No. 17951 the following courses and distances: North 00 degrees 24 minutes 22 seconds West 341.84 feet, North 00 degrees 20 minutes 22 seconds West 1,821.95 feet and North 00 degrees 20 minutes 35 seconds West 772.13 feet to the Northeast corner of said State Lease No. 17951, having Coordinates of X = 2,593,705.94 and Y = 488,465.08; thence along said boundary of said Biloxi Wildlife Management Area the following courses and distances: North 00 degrees 20 minutes 35 seconds West 1,060.72 feet, North 00 degrees 49 minutes 40 seconds West 1,643.66 feet, North 87 degrees 44 minutes 54 seconds East 5,407.86 feet, South 02 degrees 47 minutes 00 seconds East 3,554.61 feet, South 02 degrees 58 minutes 50 seconds East 356.59 feet, South 02 degrees 49 minutes 18 seconds East 1,837.38 feet, South 88 degrees 51 minutes 44 seconds West 1,082.73 feet and South 88 degrees 52 minutes 34 seconds West 4,555.71 feet to the point of beginning, **LESS AND EXCEPT** any portion that may lie outside the boundaries of the Biloxi Wildlife Management Area, containing approximately **544 acres**, all as more particularly outlined on a plat on file in the Office of Mineral Resources, Department of Natural Resources. All bearings, distances and coordinates are based on Louisiana Coordinate System of 1927, (North or South Zone).

NOTE: The above description of the Tract nominated for lease has been provided and corrected, where required, exclusively by the nomination party. Any mineral lease selected from this Tract and awarded by the Louisiana State Mineral Board shall be without warranty of any kind, either express, implied, or statutory, including, but not limited to, the implied warranties of merchantability and fitness for a particular purpose. Should the mineral lease awarded by the Louisiana State Mineral Board be subsequently modified, cancelled or abrogated due to the existence of conflicting leases, operating agreements, private claims or other future obligations or conditions which may affect all or any portion of the leased Tract, it shall not relieve the Lessee of the obligation to pay any bonus due thereon to the Louisiana State Mineral Board, nor shall the Louisiana State Mineral Board be obligated to refund any consideration paid by the Lessor prior to such modification, cancellation, or abrogation, including, but not limited to, bonuses, rentals and royalties.

NOTE: The Office of Mineral Resources will require a minimum bonus of \$230 per acre and a minimum royalty of 23%.

NOTE: This tract is located within the boundaries of a wildlife management area or refuge and any operations conducted thereon in conjunction with this mineral lease may be subject to rules and regulations promulgated by the Department of Wildlife and Fisheries for the protection of fish, birds and other wildlife including, but not necessarily limited to, the following:

1. No activities will be allowed without written authorization from the Louisiana Department of Wildlife and Fisheries.
2. Proposed projects will be evaluated on a case by case basis. Modifications to proposed project features including but not limited to access routes, spoil placement, well sites, flowlines and appurtenant structures may be required by the Department of Wildlife and Fisheries.
3. Compensatory mitigation will be required to offset unavoidable wetland impacts.  
Mitigation will be required to offset avoidable wetland impacts.
4. Removal of all structures, facilities and equipment will be required within 120 days of abandonment unless otherwise agreed to by the Louisiana Department of Wildlife and Fisheries.
5. No activities will be allowed during the hunting season unless approved by the Department.
6. Compliance with the said WMA regulations will be required unless otherwise specified by the Department.
7. Prior to submitting applications for wetland permits to Federal and State permitting agencies the lease holder shall coordinate project details with the Louisiana Department of Wildlife and Fisheries, Fur and Refuge Division. Contact person for the Department will be Mike Windham at (504) 568-5886.

NOTE: The State of Louisiana does hereby reserve, and this lease shall be subject to, the imprescriptible right of surface use in the nature of a servitude in favor of the Department of Natural Resources, including its Offices and Commissions, for the sole purpose of implementing, constructing, servicing and maintaining approved coastal zone management and/or restoration projects. Utilization of any and all rights derived under this lease by the mineral lessee, its agents, successors or assigns, shall not interfere with nor hinder the reasonable surface use by the Department of Natural Resources, its Offices or Commissions, as herein above reserved.

NOTE: The Department of Wildlife and Fisheries has designated certain areas in the coastal waters of the State of Louisiana as Oyster Seed Bed Areas. The exact location of those Seed Bed Areas must be obtained from the Department of Wildlife and Fisheries and any work done under a mineral lease from the State of Louisiana may necessarily be conducted in conformity with the rules and regulations promulgated by the said Department of Wildlife and Fisheries for Oyster Seed Bed Areas.

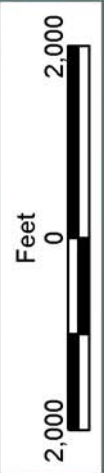
Applicant: Harold J. Anderson, Inc.

Bidder	Cash Payment	Price/Acre	Rental	Oil	Gas	Other



FALSE MOUTH BAY

BAY BOUDREAU



BILOXI WMA



T12S - R17E

P.O.B.  
X=2,593,723.77  
Y=485,529.22

ST BERNARD PARISH

S.L. 17951

S.L. 17976

LAKE EUGENIE

**TRACT 36406 - St. Bernard Parish, Louisiana**

All lands now or formerly constituting the beds and bottoms of water bodies of whatever description and nature owned by the State of Louisiana and located within the geographical boundaries of the Biloxi Wildlife Management Area and not presently under mineral lease by the State of Louisiana as of June 9, 2004, the area being set forth as follows: Beginning at the Northeast corner of State Lease No. 17980 having Coordinates of X = 2,599,998.89 and Y = 461,857.44; thence South 89 degrees 43 minutes 31 seconds West 16,149.75 feet along the North line of said State Lease No. 17980 to its Northwest corner, also being a point on the East line of State Lease No. 17955 having Coordinates of X = 2,583,849.33 and Y = 461,780.02; thence along the boundary of said State Lease No. 17955 the following courses and distances: North 01 degrees 14 minutes 39 seconds West 2,122.77 feet, North 01 degrees 17 minutes 30 seconds West 524.79 feet, North 89 degrees 58 minutes 45 seconds East 3,231.45 feet and North 89 degrees 57 minutes 01 seconds East 2,135.28 feet to its most Easterly Southeast corner; thence North 01 degrees 27 minutes 38 seconds West 17.54 feet along the East line of said State Lease No. 17955 to the Southwest corner of State Lease No. 17977 having Coordinates of X = 2,589,157.70 and Y = 464,447.52; thence along the boundary of said State Lease No. 17977 the following courses and distances: North 89 degrees 57 minutes 48 seconds East 5,351.19 feet and North 02 degrees 05 minutes 19 seconds West 10,428.44 feet to the Northeast corner of said State Lease No. 17977, also being the most Easterly Southeast corner of State Lease No. 17953 having Coordinates of X = 2,594,129.22 and Y = 474,872.46; thence along the boundary of said State Lease No. 17953 the following courses and distances: North 02 degrees 30 minutes 44 seconds West 1,036.77 feet, North 02 degrees 31 minutes 00 seconds West 2,182.67 feet, North 02 degrees 27 minutes 15 seconds West 956.71 feet and North 02 degrees 31 minutes 05 seconds West 1,262.32 feet to the Northeast corner of said State Lease No. 17953, also being a point on the boundary of the Biloxi Wildlife Management Area having Coordinates of X = 2,593,891.51 and Y = 480,305.73; thence along the boundary of said Biloxi Wildlife Management Area the following courses and distances: North 89 degrees 43 minutes 31 seconds East 5,620.61 feet and South 01 degrees 45 minutes 04 seconds East 463.89 feet to a point on the boundary of said Biloxi Wildlife Management Area, also being the Northwest corner of State Lease No. 17954 having Coordinates of X = 2,599,526.23 and Y = 479,869.00; thence along the boundary of said Biloxi Wildlife Management Area and said State Lease No. 17954 the following courses and distances: South 01 degrees 45 minutes 04 seconds East 4,042.06 feet, South 01 degrees 49 minutes 58 seconds East 818.29 feet and South 03 degrees 29 minutes 43 seconds East 2,533.38 feet to a point on the boundary of said Biloxi Wildlife Management Area, also being the Southwest corner of said State Lease No. 17954 having Coordinates of X = 2,599,830.37 and Y = 472,482.28; thence along the boundary of said Biloxi Wildlife Management Area the following courses and distances: South 03 degrees 29 minutes 43 seconds East 2,664.54 feet, South 01 degrees 25 minutes 01 seconds West 3,533.95 feet, South 01 degrees 33 minutes 49 seconds West 578.74 feet, South 01

degrees 11 minutes 32 seconds West 254.72 feet, South 01 degrees 32 minutes 12 seconds West 804.40 feet and South 02 degrees 47 minutes 17 seconds East 2,798.40 feet to the point of beginning, **LESS AND EXCEPT** any portion of the Biloxi Wildlife Management Area that may lie outside the above described tract, containing approximately **1,221 acres**, all as more particularly outlined on a plat on file in the Office of Mineral Resources, Department of Natural Resources. All bearings, distances and coordinates are based on Louisiana Coordinate System of 1927, (North or South Zone).

NOTE: The above description of the Tract nominated for lease has been provided and corrected, where required, exclusively by the nomination party. Any mineral lease selected from this Tract and awarded by the Louisiana State Mineral Board shall be without warranty of any kind, either express, implied, or statutory, including, but not limited to, the implied warranties of merchantability and fitness for a particular purpose. Should the mineral lease awarded by the Louisiana State Mineral Board be subsequently modified, cancelled or abrogated due to the existence of conflicting leases, operating agreements, private claims or other future obligations or conditions which may affect all or any portion of the leased Tract, it shall not relieve the Lessee of the obligation to pay any bonus due thereon to the Louisiana State Mineral Board, nor shall the Louisiana State Mineral Board be obligated to refund any consideration paid by the Lessor prior to such modification, cancellation, or abrogation, including, but not limited to, bonuses, rentals and royalties.

NOTE: The Office of Mineral Resources will require a minimum bonus of \$230 per acre and a minimum royalty of 23%.

NOTE: This tract is located within the boundaries of a wildlife management area or refuge and any operations conducted thereon in conjunction with this mineral lease may be subject to rules and regulations promulgated by the Department of Wildlife and Fisheries for the protection of fish, birds and other wildlife including, but not necessarily limited to, the following:

1. No activities will be allowed without written authorization from the Louisiana Department of Wildlife and Fisheries.
2. Proposed projects will be evaluated on a case by case basis. Modifications to proposed project features including but not limited to access routes, spoil placement, well sites, flowlines and appurtenant structures may be required by the Department of Wildlife and Fisheries.
3. Compensatory mitigation will be required to offset unavoidable wetland impacts.  
Mitigation will be required to offset avoidable wetland impacts.
4. Removal of all structures, facilities and equipment will be required within 120 days of abandonment unless otherwise agreed to by the Louisiana Department of Wildlife and Fisheries.
5. No activities will be allowed during the hunting season unless approved by the Department.

6. Compliance with the said WMA regulations will be required unless otherwise specified by the Department.

7. Prior to submitting applications for wetland permits to Federal and State permitting agencies the lease holder shall coordinate project details with the Louisiana Department of Wildlife and Fisheries, Fur and Refuge Division. Contact person for the Department will be Mike Windham at (504) 568-5886.

NOTE: The State of Louisiana does hereby reserve, and this lease shall be subject to, the imprescriptible right of surface use in the nature of a servitude in favor of the Department of Natural Resources, including its Offices and Commissions, for the sole purpose of implementing, constructing, servicing and maintaining approved coastal zone management and/or restoration projects. Utilization of any and all rights derived under this lease by the mineral lessee, its agents, successors or assigns, shall not interfere with nor hinder the reasonable surface use by the Department of Natural Resources, its Offices or Commissions, as herein above reserved.

NOTE: The Department of Wildlife and Fisheries has designated certain areas in the coastal waters of the State of Louisiana as Oyster Seed Bed Areas. The exact location of those Seed Bed Areas must be obtained from the Department of Wildlife and Fisheries and any work done under a mineral lease from the State of Louisiana may necessarily be conducted in conformity with the rules and regulations promulgated by the said Department of Wildlife and Fisheries for Oyster Seed Bed Areas.

Applicant: Harold J. Anderson, Inc.

Bidder	Cash Payment	Price/Acre	Rental	Oil	Gas	Other



S.L. 17954

P.O.B.  
X=2,599,998.89  
Y=461,857.44



BILOXI WMA

T12S - R17E

T13S - R17E

S.L. 17977

S.L. 17980

S.L. 17953

ST BERNARD PARISH

S.L. 17955



**TRACT 36407 - St. Bernard Parish, Louisiana**

All lands now or formerly constituting the beds and bottoms of water bodies of whatever description and nature owned by the State of Louisiana and located within the geographical boundaries of the Biloxi Wildlife Management Area and not presently under mineral lease by the State of Louisiana as of June 9, 2004, the area being set forth as follows: Beginning at a point on the South line of State Lease No. 17088, also being a point on the boundary of the Biloxi Wildlife Management Area having Coordinates of X = 2,567,242.00 and Y = 464,191.01; thence North 88 degrees 44 minutes 45 seconds East 92.20 feet along the South line of said State Lease No. 17088 to its Southeast corner, also being the Southwest corner of State Lease No. 17772 having Coordinates of X = 2,567,334.18 and Y = 464,193.03; thence South 89 degrees 53 minutes 48 seconds East 11,256.11 feet along the South line of said State Lease No. 17772 to its Southeast corner, and a point on the West line of State Lease No. 17955, also being a point on the boundary of said Biloxi Wildlife Management Area having Coordinates of X = 2,578,590.28 and Y = 464,172.74; thence along the boundary of said State Lease No. 17955 and the boundary of the Biloxi Wildlife Management Area the following courses and distances: South 01 degrees 08 minutes 45 seconds East 4,661.88 feet and South 89 degrees 23 minutes 58 seconds East 5,216.55 feet to the Southeast corner of said State Lease No. 17955, and a point on the West line of State Lease No. 17980, also being an interior corner on the boundary of said Biloxi Wildlife Management Area having Coordinates of X = 2,583,899.77 and Y = 459,457.10; thence South approximately 14,380 feet along the West line of said State Lease No. 17980 to its most Westerly Southwest corner, also being a point on the boundary of said Biloxi Wildlife Management Area having a Coordinate of X = 2,583,899.77; thence Northwesterly along the boundary of said Biloxi Wildlife Management Area to a point, also being the most Easterly Northeast corner of State Lease No. 17958 having Coordinates of X = 2,583,000.00 and Y = 446,061.73; thence Northwesterly along the boundary of said Biloxi Wildlife Management Area and said State Lease No. 17958 to a point, also being the most Easterly Southeast corner of State Lease No. 17979 having Coordinates of X = 2,580,796.85 and Y = 447,724.47; thence along the boundary of said State Lease No. 17979 the following courses and distances: North 6,393.89 feet, South 88 degrees 58 minutes 18 seconds West 8,000.00 feet and South 00 degrees 54 minutes 07 seconds East 5,052.40 feet to the most Westerly Southwest corner of said State Lease No. 17979, and a point on the North line of said State Lease No. 17958, also being a point on the boundary of said Biloxi Wildlife Management Area having Coordinates of X = 2,572,877.67 and Y = 448,923.00; thence along the boundary of said State Lease No. 17958 and the Biloxi Wildlife Management Area the following courses and distances: South 89 degrees 46 minutes 20 seconds West 5,029.48 feet and South 86 degrees 26 minutes 46 seconds West 607.39 feet to the Northwest corner of said State Lease No. 17958 having Coordinates of X = 2,567,242.00 and Y = 448,865.36; thence North 15,325.65 feet to the point of beginning, **LESS AND EXCEPT** any portion that may lie outside the boundaries of the Biloxi Wildlife Management Area, containing approximately **996 acres**, all as more

particularly outlined on a plat on file in the Office of Mineral Resources, Department of Natural Resources. All bearings, distances and coordinates are based on Louisiana Coordinate System of 1927, (North or South Zone).

NOTE: The above description of the Tract nominated for lease has been provided and corrected, where required, exclusively by the nomination party. Any mineral lease selected from this Tract and awarded by the Louisiana State Mineral Board shall be without warranty of any kind, either express, implied, or statutory, including, but not limited to, the implied warranties of merchantability and fitness for a particular purpose. Should the mineral lease awarded by the Louisiana State Mineral Board be subsequently modified, cancelled or abrogated due to the existence of conflicting leases, operating agreements, private claims or other future obligations or conditions which may affect all or any portion of the leased Tract, it shall not relieve the Lessee of the obligation to pay any bonus due thereon to the Louisiana State Mineral Board, nor shall the Louisiana State Mineral Board be obligated to refund any consideration paid by the Lessor prior to such modification, cancellation, or abrogation, including, but not limited to, bonuses, rentals and royalties.

NOTE: The Office of Mineral Resources will require a minimum bonus of \$230 per acre and a minimum royalty of 23%.

NOTE: This tract is located within the boundaries of a wildlife management area or refuge and any operations conducted thereon in conjunction with this mineral lease may be subject to rules and regulations promulgated by the Department of Wildlife and Fisheries for the protection of fish, birds and other wildlife including, but not necessarily limited to, the following:

1. No activities will be allowed without written authorization from the Louisiana Department of Wildlife and Fisheries.
2. Proposed projects will be evaluated on a case by case basis. Modifications to proposed project features including but not limited to access routes, spoil placement, well sites, flowlines and appurtenant structures may be required by the Department of Wildlife and Fisheries.
3. Compensatory mitigation will be required to offset unavoidable wetland impacts.  
Mitigation will be required to offset avoidable wetland impacts.
4. Removal of all structures, facilities and equipment will be required within 120 days of abandonment unless otherwise agreed to by the Louisiana Department of Wildlife and Fisheries.
5. No activities will be allowed during the hunting season unless approved by the Department.
6. Compliance with the said WMA regulations will be required unless otherwise specified by the Department.
7. Prior to submitting applications for wetland permits to Federal and State permitting agencies the lease holder shall coordinate project details with the Louisiana Department of Wildlife and Fisheries, Fur and

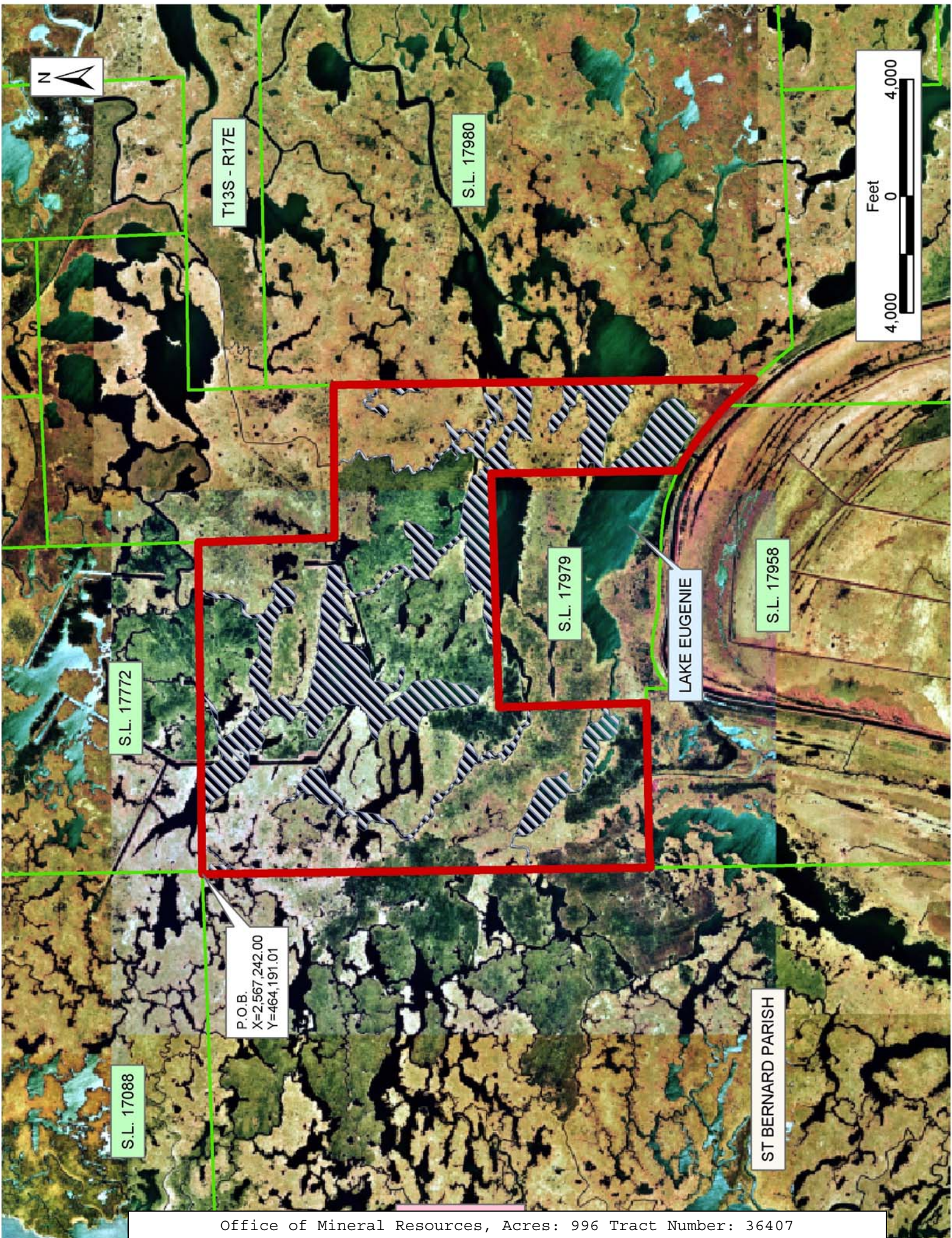
Refuge Division. Contact person for the Department will be Mike Windham at (504) 568-5886.

NOTE: The State of Louisiana does hereby reserve, and this lease shall be subject to, the imprescriptible right of surface use in the nature of a servitude in favor of the Department of Natural Resources, including its Offices and Commissions, for the sole purpose of implementing, constructing, servicing and maintaining approved coastal zone management and/or restoration projects. Utilization of any and all rights derived under this lease by the mineral lessee, its agents, successors or assigns, shall not interfere with nor hinder the reasonable surface use by the Department of Natural Resources, its Offices or Commissions, as herein above reserved.

NOTE: The Department of Wildlife and Fisheries has designated certain areas in the coastal waters of the State of Louisiana as Oyster Seed Bed Areas. The exact location of those Seed Bed Areas must be obtained from the Department of Wildlife and Fisheries and any work done under a mineral lease from the State of Louisiana may necessarily be conducted in conformity with the rules and regulations promulgated by the said Department of Wildlife and Fisheries for Oyster Seed Bed Areas.

Applicant: Harold J. Anderson, Inc.

Bidder	Cash Payment	Price/Acre	Rental	Oil	Gas	Other



T13S - R17E

S.L. 17980



S.L. 17772

S.L. 17979

LAKE EUGENIE

S.L. 17958

P.O.B.  
X=2,567,242.00  
Y=464,191.01

S.L. 17088

ST BERNARD PARISH