

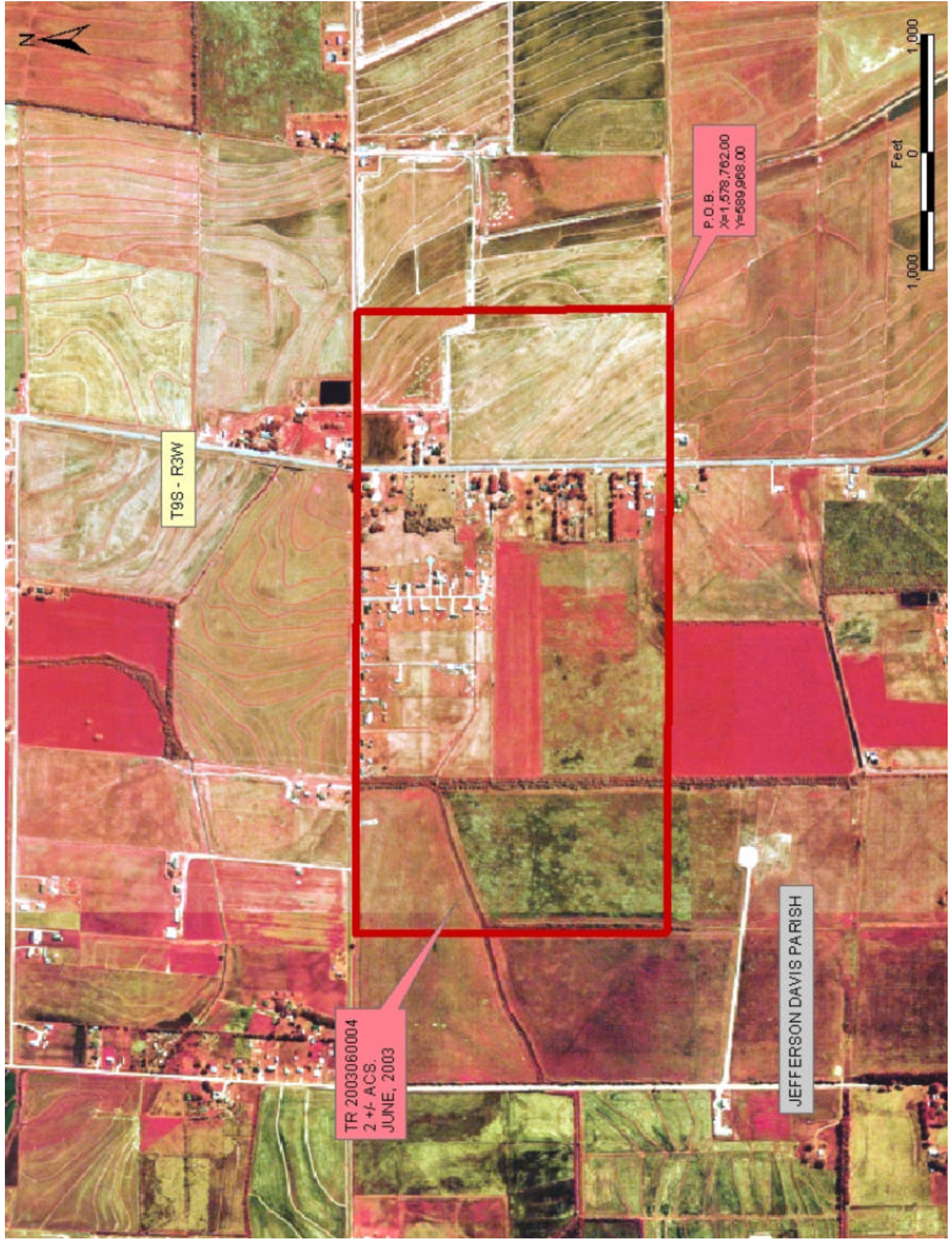
TRACT 35506 - Jefferson Davis Parish, Louisiana

A certain Tract of land, excluding the beds and bottoms of all navigable waters, belonging to and not presently under mineral lease from Jefferson Davis Parish Police Jury on June 11, 2003, being more fully described as follows: Beginning at a point having Coordinates of X = 1,578,762.00 and Y = 589,968.00; thence North 88 degrees 47 minutes 22 seconds West 5,301.18 feet to a point having Coordinates of X = 1,573,462.00 and Y = 590,080.00; thence North 00 degrees 36 minutes 21 seconds East 2,648.15 feet to a point having Coordinates of X = 1,573,490.00 and Y = 592,728.00; thence South 88 degrees 57 minutes 32 seconds East 5,282.87 feet to a point having Coordinates of X = 1,578,772.00 and Y = 592,632.00; thence South 00 degrees 12 minutes 54 seconds West 2,664.02 feet to the point of beginning, containing approximately **2 acres**, , all as more particularly outlined on a plat on file in the Office of Mineral Resources, Department of Natural Resources. The description is based on information provided by the State Agency regarding location and ownership of surface and mineral rights. All distances, bearing and coordinates, if applicable, are based on the Louisiana Coordinate System of 1927, (North or South Zone).

NOTE: The above description of the Tract nominated for lease has been provided and corrected, where required, exclusively by the nomination party. Any mineral lease selected from this Tract and awarded by the Louisiana State Mineral Board shall be without warranty of any kind, either express, implied, or statutory, including, but not limited to, the implied warranties of merchantability and fitness for a particular purpose. Should the mineral lease awarded by the Louisiana State Mineral Board be subsequently modified, cancelled or abrogated due to the existence of conflicting leases, operating agreements, private claims or other future obligations or conditions which may affect all or any portion of the leased Tract, it shall not relieve the Lessee of the obligation to pay any bonus due thereon to the Louisiana State Mineral Board, nor shall the Louisiana State Mineral Board be obligated to refund any consideration paid by the Lessor prior to such modification, cancellation, or abrogation, including, but not limited to, bonuses, rentals and royalties.

Applicant: Magellan Energy, L.L.C. to Agency and by Resolution from the Jefferson Davis Parish Police Jury authorizing the Mineral Board to act in its behalf

Bidder	Cash Payment	Price / Acre	Rental	Oil	Gas	Other



T9S - R3W

TR 2003060004
2 +/- ACS.
JUNE, 2003

JEFFERSON DAVIS PARISH

P.O.B.
X=1,578,762.00
Y=589,968.00

1,000
Feet
0
1,000

TRACT 35507 - Vermilion Parish, Louisiana

A certain Tract of land, excluding the beds and bottoms of all navigable waters, belonging to and not presently under mineral lease from Vermilion Parish Police Jury on June 11, 2003, being more fully described as follows: That certain tract or parcel of land situated in the Northern portion of Section 1, Township 11 South Range 1 East, Vermilion Parish, Louisiana being bounded now or formerly by lands owned as follows: North by Ester Sarver, et al; East by Clara Simon Bertrand; South by Clara Simon Bertrand; West by Ester Sarver, et al. Said tract herein leased is further described as being the same lands adjudicated to the Vermilion Parish Police Jury by that certain Instrument (Tax Sale) recorded under Entry No. 9205664 of the Conveyance Records of Vermilion Parish, Louisiana, containing approximately **3.00 acres**,

, all as more particularly outlined on a plat on file in the Office of Mineral Resources, Department of Natural Resources. The description is based on information provided by the State Agency regarding location and ownership of surface and mineral rights. All distances, bearing and coordinates, if applicable, are based on the Louisiana Coordinate System of 1927, (North or South Zone).

NOTE: The above description of the Tract nominated for lease has been provided and corrected, where required, exclusively by the nomination party. Any mineral lease selected from this Tract and awarded by the Louisiana State Mineral Board shall be without warranty of any kind, either express, implied, or statutory, including, but not limited to, the implied warranties of merchantability and fitness for a particular purpose. Should the mineral lease awarded by the Louisiana State Mineral Board be subsequently modified, cancelled or abrogated due to the existence of conflicting leases, operating agreements, private claims or other future obligations or conditions which may affect all or any portion of the leased Tract, it shall not relieve the Lessee of the obligation to pay any bonus due thereon to the Louisiana State Mineral Board, nor shall the Louisiana State Mineral Board be obligated to refund any consideration paid by the Lessor prior to such modification, cancellation, or abrogation, including, but not limited to, bonuses, rentals and royalties.

Applicant: Saxon Energy, Inc. to Agency and by Resolution from the Vermilion Parish Police Jury authorizing the Mineral Board to act in its behalf

Bidder	Cash Payment	Price / Acre	Rental	Oil	Gas	Other



VERMILION PARISH

S.L. 3172

TR 2003060003
JUNE, 2003

S.L. 17678

ACADIA PARISH

Feet
0
1,000
1,000



TRACT 35508 - Terrebonne Parish, Louisiana

A certain Tract of land, excluding the beds and bottoms of all navigable waters, belonging to and not presently under mineral lease from Terrebonne Parish School Board on June 11, 2003, being more fully described as follows: Beginning at a point having Coordinates of X = 2,201,610.34 and Y = 273,072.70; thence, South 82 degrees 26 minutes 58 seconds East a distance of 507.40 feet to a point having Coordinates of X = 2,202,113.35 and Y = 273,006.03; thence South 00 degrees 39 minutes 02 seconds West a distance of 388.00 feet to a point having Coordinates of X = 2,202,108.94 and Y = 272,618.05; thence North 87 degrees 02 minutes 58 seconds West a distance of 563.47 feet to a point having Coordinates of X = 2,201,546.21 and Y = 272,647.06; thence North 08 degrees 34 minutes 05 seconds East a distance of 430.45 feet to the point of beginning, containing approximately **5 acres**, , all as more particularly outlined on a plat on file in the Office of Mineral Resources, Department of Natural Resources. The description is based on information provided by the State Agency regarding location and ownership of surface and mineral rights. All distances, bearing and coordinates, if applicable, are based on the Louisiana Coordinate System of 1927, (North or South Zone).

NOTE: The above description of the Tract nominated for lease has been provided and corrected, where required, exclusively by the nomination party. Any mineral lease selected from this Tract and awarded by the Louisiana State Mineral Board shall be without warranty of any kind, either express, implied, or statutory, including, but not limited to, the implied warranties of merchantability and fitness for a particular purpose. Should the mineral lease awarded by the Louisiana State Mineral Board be subsequently modified, cancelled or abrogated due to the existence of conflicting leases, operating agreements, private claims or other future obligations or conditions which may affect all or any portion of the leased Tract, it shall not relieve the Lessee of the obligation to pay any bonus due thereon to the Louisiana State Mineral Board, nor shall the Louisiana State Mineral Board be obligated to refund any consideration paid by the Lessor prior to such modification, cancellation, or abrogation, including, but not limited to, bonuses, rentals and royalties.

NOTE: The State of Louisiana does hereby reserve, and this lease shall be subject to, the imprescriptible right of surface use in the nature of a servitude in favor of the Department of Natural Resources, including its Offices and Commissions, for the sole purpose of implementing, constructing, servicing and maintaining approved coastal zone management and/or restoration projects. Utilization of any and all rights derived under this lease by the mineral lessee, its agents, successors or assigns, shall not interfere with nor hinder the reasonable surface use by the Department of Natural Resources, its Offices or Commissions, as herein above reserved.

NOTE: The Department of Wildlife and Fisheries has designated certain areas in the coastal waters of the State of Louisiana as Oyster Seed Bed Areas. The exact location of those Seed Bed Areas must be obtained from the Department of Wildlife and Fisheries and any work done under a mineral lease from the State of Louisiana may necessarily be conducted in conformity with the rules and regulations promulgated by the said Department of Wildlife and Fisheries for Oyster Seed Bed Areas.

Applicant: Petroleum Land Resources, Inc. to Agency and by Resolution from the Terrebonne Parish School Board authorizing the Mineral Board to act in its behalf

Bidder	Cash Payment	Price / Acre	Rental	Oil	Gas	Other



TERREBONNE PARISH

TR 2003060001
5 +/- ACRES
JUNE, 2003

P.O.B.
X=2,201,610.34
Y=273,072.70

BAYOU DULAC

S.L. 17650

