

TRACT 35483 - Portion of Block 38, Eugene Island Area, Revised, St. Mary Parish, Louisiana

The beds and bottoms of all water bodies belonging to the State of Louisiana located in that portion of Block 38, Eugene Island Area, Revised, together with any present lands formed by accretion to the shoreline, located in St. Mary Parish, Louisiana, and not presently under mineral lease on June 11, 2003, the geographical area of which is more fully described as follows: Beginning at the Northeast corner of said Block 38 having Coordinates of X = 1,984,977.84 and Y = 226,396.84; thence South 8,225.73 feet on the East line of said Block 38 to a point having Coordinates of X = 1,984,977.84 and Y = 218,171.11; thence Northwesterly on a straight line to a point having Coordinates of X = 1,984,419 and Y = 218,858; thence Northwesterly along an arc having a radius of 18,240.60 feet and a center at X = 1,987,818 and Y = 240,892 to a point having Coordinates of X = 1,982,726 and Y = 221,329; thence Northwesterly on a straight line to a point having Coordinates of X = 1,981,279 and Y = 223,864; thence Northwesterly along an arc having a radius of 18,240.60 feet and a center at X = 1,998,568 and Y = 230,370 to a point on the North line of said Block 38 having Coordinates of X = 1,976,745.13 and Y = 226,396.84; thence East 8,232.71 feet to the point of beginning, containing approximately **621.77 acres, LESS AND EXCEPT** that portion thereof, if any, lying seaward of the line three nautical miles from the coast line of Louisiana, as said three mile line has been decreed by the Supreme Court of the United States, as determined by a Special Master appointed therein, in litigation styled **United States v. State of Louisiana et al No. 9 Original**, in 1975, all as more particularly outlined on a plat in the Office of Mineral Resources, Department of Natural Resources. All bearings, distances and coordinates are based on the Louisiana Coordinate System of 1927, (South Zone).

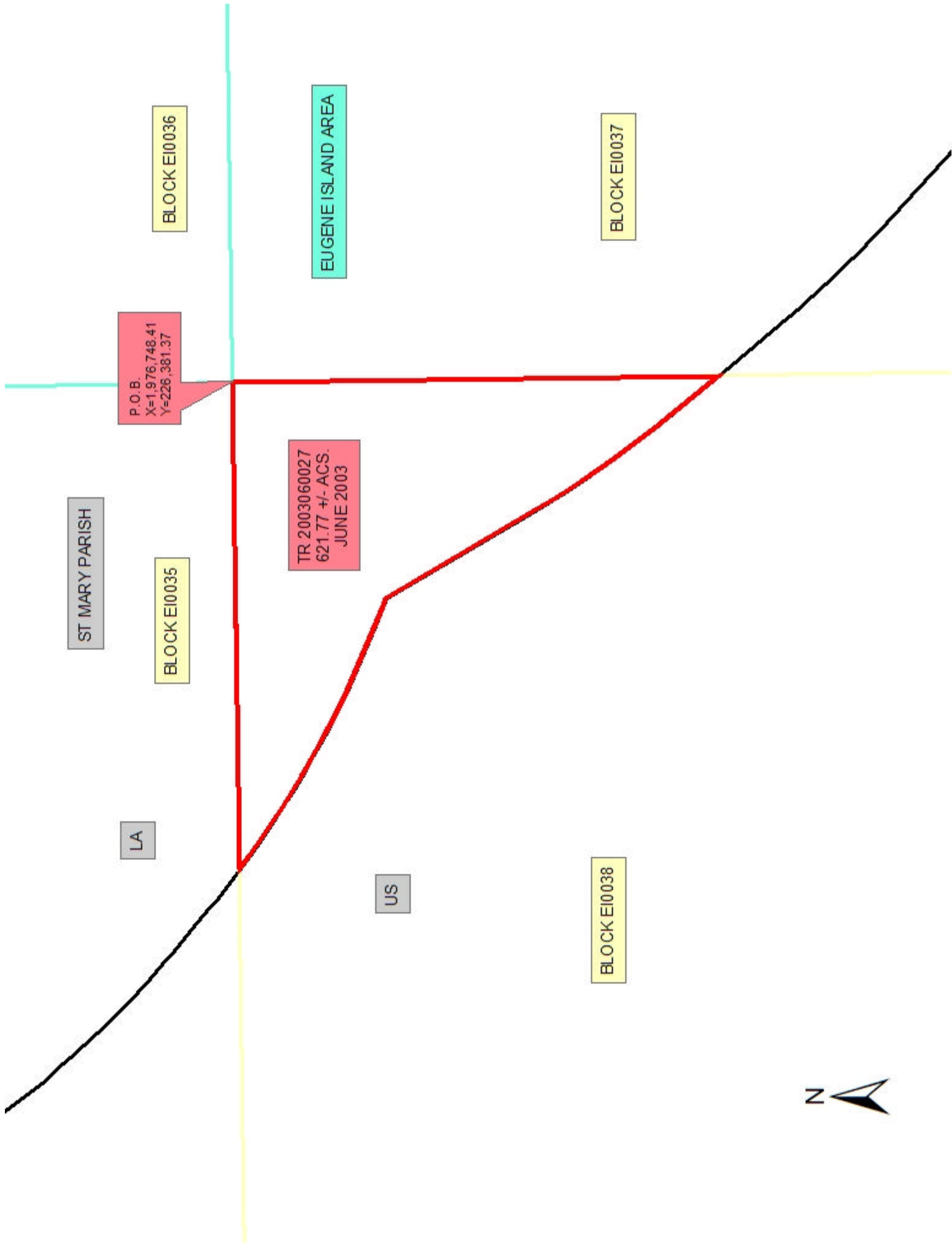
NOTE: The above description of the Tract nominated for lease has been provided and corrected, where required, exclusively by the nomination party. Any mineral lease selected from this Tract and awarded by the Louisiana State Mineral Board shall be without warranty of any kind, either express, implied, or statutory, including, but not limited to, the implied warranties of merchantability and fitness for a particular purpose. Should the mineral lease awarded by the Louisiana State Mineral Board be subsequently modified, cancelled or abrogated due to the existence of conflicting leases, operating agreements, private claims or other future obligations or conditions which may affect all or any portion of the leased Tract, it shall not relieve the Lessee of the obligation to pay any bonus due thereon to the Louisiana State Mineral Board, nor shall the Louisiana State Mineral Board be obligated to refund any consideration paid by the Lessor prior to such modification, cancellation, or abrogation, including, but not limited to, bonuses, rentals and royalties.

NOTE: The State of Louisiana does hereby reserve, and this lease shall be subject to, the imprescriptible right of surface use in the nature of a servitude in favor of the Department of Natural Resources, including its

Offices and Commissions, for the sole purpose of implementing, constructing, servicing and maintaining approved coastal zone management and/or restoration projects. Utilization of any and all rights derived under this lease by the mineral lessee, its agents, successors or assigns, shall not interfere with nor hinder the reasonable surface use by the Department of Natural Resources, its Offices or Commissions, as herein above reserved.

Applicant: Harold J. Anderson, Inc.

Bidder	Cash Payment	Price / Acre	Rental	Oil	Gas	Other



BLOCK EI0036

EUGENE ISLAND AREA

BLOCK EI0037

P.O.B.
X=1,976,748.41
Y=226,381.37

ST MARY PARISH

BLOCK EI0035

TR 2003060027
621.77 +/- ACS.
JUNE 2003

LA

US

BLOCK EI0038

BLOCK EI0039

TRACT 35484 - Portion of Block 37, Eugene Island Area, Revised, St. Mary and Terrebonne Parishes, Louisiana

The beds and bottoms of all water bodies belonging to the State of Louisiana located in that portion of Block 37, Eugene Island Area, Revised, together with any present lands formed by accretion to the shoreline, located in St. Mary and Terrebonne Parishes, Louisiana, and not presently under mineral lease on June 11, 2003, the geographical area of which is more fully described as follows: Beginning at the Northwest corner of said Block 37 having Coordinates of X = 1,984,977.84 and Y = 226,396.84; thence East 15,022.16 feet on the North line of said Block 37 to its Northeast corner having Coordinates of X = 2,000,000.00 and Y = 226,396.84; thence South 7,249.29 feet on the East line of said Block 37 to a point having Coordinates of X = 2,000,000.00 and Y = 219,147.55; thence West 15,022.16 feet to a point on the West line of said Block 37 having Coordinates of X = 1,984,977.84 and Y = 219,147.55; thence North 7,249.29 feet to the point of beginning, containing approximately **2,500.00 acres**, all as more particularly outlined on a plat on file in the Office of Mineral Resources, Department of Natural Resources. All bearings, distances and coordinates are based on Louisiana Coordinate System of 1927, (North or South Zone).

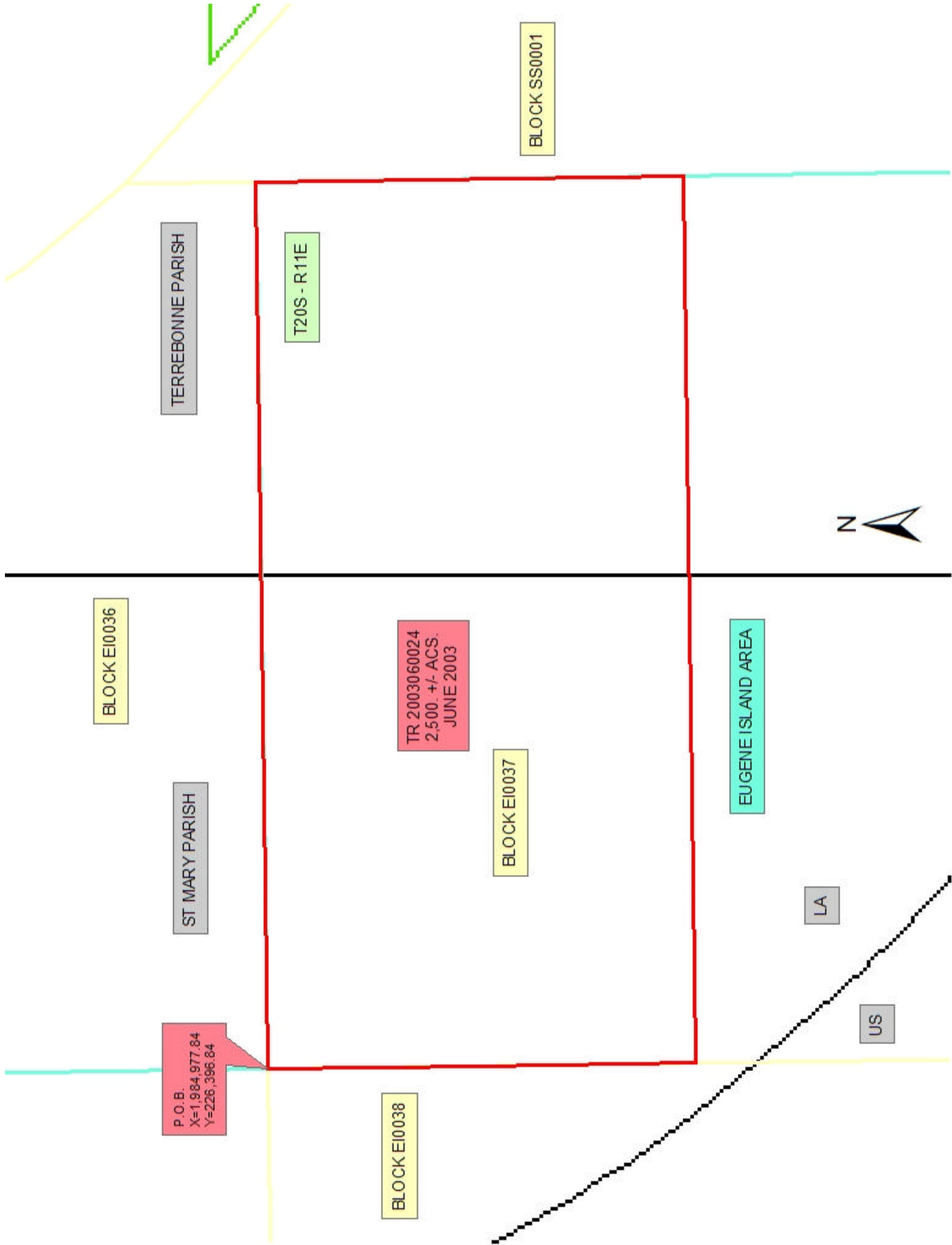
NOTE: The above description of the Tract nominated for lease has been provided and corrected, where required, exclusively by the nomination party. Any mineral lease selected from this Tract and awarded by the Louisiana State Mineral Board shall be without warranty of any kind, either express, implied, or statutory, including, but not limited to, the implied warranties of merchantability and fitness for a particular purpose. Should the mineral lease awarded by the Louisiana State Mineral Board be subsequently modified, cancelled or abrogated due to the existence of conflicting leases, operating agreements, private claims or other future obligations or conditions which may affect all or any portion of the leased Tract, it shall not relieve the Lessee of the obligation to pay any bonus due thereon to the Louisiana State Mineral Board, nor shall the Louisiana State Mineral Board be obligated to refund any consideration paid by the Lessor prior to such modification, cancellation, or abrogation, including, but not limited to, bonuses, rentals and royalties.

NOTE: The State of Louisiana does hereby reserve, and this lease shall be subject to, the imprescriptible right of surface use in the nature of a servitude in favor of the Department of Natural Resources, including its Offices and Commissions, for the sole purpose of implementing, constructing, servicing and maintaining approved coastal zone management and/or restoration projects. Utilization of any and all rights derived under this lease by the mineral lessee, its agents, successors or assigns, shall not interfere with nor hinder the reasonable surface use by the Department of Natural Resources, its Offices or Commissions, as herein above reserved.

NOTE: The Department of Wildlife and Fisheries has designated certain areas in the coastal waters of the State of Louisiana as Oyster Seed Bed Areas. The exact location of those Seed Bed Areas must be obtained from the Department of Wildlife and Fisheries and any work done under a mineral lease from the State of Louisiana may necessarily be conducted in conformity with the rules and regulations promulgated by the said Department of Wildlife and Fisheries for Oyster Seed Bed Areas.

Applicant: Harold J. Anderson, Inc.

Bidder	Cash Payment	Price / Acre	Rental	Oil	Gas	Other



TRACT 35485 - Portion of Block 1, and Block 2, Atchafalaya Bay Area, Ship Shoal Area, Terrebonne Parish, Louisiana

The beds and bottoms of all water bodies belonging to the State of Louisiana located in that portion of Block 1, and Block 2, Atchafalaya Bay Area, Ship Shoal Area, together with any present lands formed by accretion to the shoreline, located in Terrebonne Parish, Louisiana, and not presently under mineral lease on June 11, 2003, the geographical area of which is more fully described as follows: Beginning at a point on the South line of said Block 1 having Coordinates of X = 2,007,800.00 and Y = 211,361.22; thence North 8,548.07 feet to a point having Coordinates of X = 2,007,800.00 and Y = 219,909.29; thence Southeasterly on a straight line to a point having Coordinates of X = 2,008,058 and Y = 219,434; thence Southeasterly on a straight line to a point having Coordinates of X = 2,008,873 and Y = 218,388; thence Southeasterly on a straight line to a point having Coordinates of X = 2,010,960 and Y = 216,566; thence Southeasterly on a straight line to a point having Coordinates of X = 2,014,384 and Y = 213,268; thence Southeasterly on a straight line to a point on the East line of said Block 1 having Coordinates of X = 2,015,600.00 and Y = 211,944.73; thence South 583.51 feet on the East line of said Block 1 to its Southeast corner having Coordinates of X = 2,015,600.00 and Y = 211,361.22; thence West 7,800.00 feet to the point of beginning, containing approximately **797.75 acres**, all as more particularly outlined on a plat on file in the Office of Mineral Resources, Department of Natural Resources. All bearings, distances and coordinates are based on Louisiana Coordinate System of 1927, (North or South Zone).

NOTE: The above description of the Tract nominated for lease has been provided and corrected, where required, exclusively by the nomination party. Any mineral lease selected from this Tract and awarded by the Louisiana State Mineral Board shall be without warranty of any kind, either express, implied, or statutory, including, but not limited to, the implied warranties of merchantability and fitness for a particular purpose. Should the mineral lease awarded by the Louisiana State Mineral Board be subsequently modified, cancelled or abrogated due to the existence of conflicting leases, operating agreements, private claims or other future obligations or conditions which may affect all or any portion of the leased Tract, it shall not relieve the Lessee of the obligation to pay any bonus due thereon to the Louisiana State Mineral Board, nor shall the Louisiana State Mineral Board be obligated to refund any consideration paid by the Lessor prior to such modification, cancellation, or abrogation, including, but not limited to, bonuses, rentals and royalties.

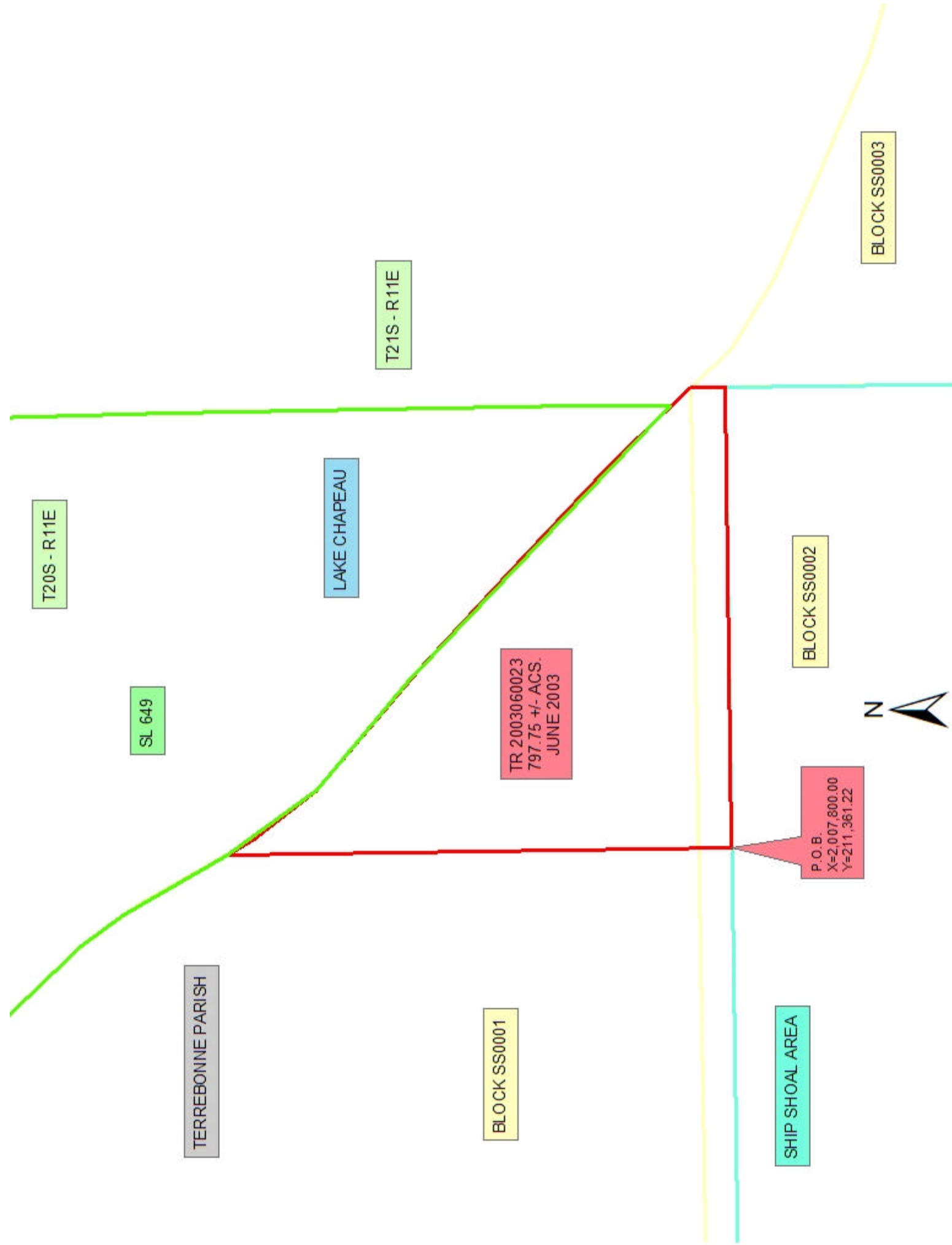
NOTE: The State of Louisiana does hereby reserve, and this lease shall be subject to, the imprescriptible right of surface use in the nature of a servitude in favor of the Department of Natural Resources, including its Offices and Commissions, for the sole purpose of implementing, constructing, servicing and maintaining approved coastal zone management and/or restoration projects. Utilization of any and all rights derived under this lease by the mineral lessee, its agents, successors or assigns,

shall not interfere with nor hinder the reasonable surface use by the Department of Natural Resources, its Offices or Commissions, as herein above reserved.

NOTE: The Department of Wildlife and Fisheries has designated certain areas in the coastal waters of the State of Louisiana as Oyster Seed Bed Areas. The exact location of those Seed Bed Areas must be obtained from the Department of Wildlife and Fisheries and any work done under a mineral lease from the State of Louisiana may necessarily be conducted in conformity with the rules and regulations promulgated by the said Department of Wildlife and Fisheries for Oyster Seed Bed Areas.

Applicant: Harold J. Anderson, Inc.

Bidder	Cash Payment	Price / Acre	Rental	Oil	Gas	Other



TRACT 35486 - Portion of Block 37, Eugene Island Area, Revised, St. Mary and Terrebonne Parishes, Louisiana

The beds and bottoms of all water bodies belonging to the State of Louisiana located in that portion of Block 37, Eugene Island Area, Revised, together with any present lands formed by accretion to the shoreline, located in St. Mary and Terrebonne Parishes, Louisiana, and not presently under mineral lease on June 11, 2003, the geographical area of which is more fully described as follows: Beginning at the Southeast corner of said Block 37 having Coordinates of X = 2,000,000.00 and Y = 211,898.26; thence West 8,868.49 feet on the South line of said Block 37 to a point having Coordinates of X = 1,991,131.51 and Y = 211,898.26; thence Northwesterly on a straight line to a point having Coordinates of X = 1,987,527 and Y = 215,292; thence Northwesterly along an arc having a radius of 18,240.60 feet and a center at X = 2,000,030 and Y = 228,573 to a point having Coordinates of X = 1,985,881 and Y = 217,061; thence Northwesterly on a straight line to a point on the West line of said Block 37 having Coordinates of X = 1,984,977.84 and Y = 218,171.11; thence North 976.44 feet on the West line of said Block 37 to a point having Coordinates of X = 1,984,977.84 and Y = 219,147.55; thence East 15,022.16 feet to a point on the East line of said Block 37 having Coordinates of X = 2,000,000.00 and Y = 219,147.55; thence South 7,249.29 feet to the point of beginning, containing approximately **2,080.86 acres, LESS AND EXCEPT** that portion thereof, if any, lying seaward of the line three nautical miles from the coast line of Louisiana, as said three mile line has been decreed by the Supreme Court of the United States, as determined by a Special Master appointed therein, in litigation styled **United States v. State of Louisiana et al No. 9 Original**, in 1975, all as more particularly outlined on a plat in the Office of Mineral Resources, Department of Natural Resources. All bearings, distances and coordinates are based on the Louisiana Coordinate System of 1927, (South Zone).

NOTE: The above description of the Tract nominated for lease has been provided and corrected, where required, exclusively by the nomination party. Any mineral lease selected from this Tract and awarded by the Louisiana State Mineral Board shall be without warranty of any kind, either express, implied, or statutory, including, but not limited to, the implied warranties of merchantability and fitness for a particular purpose. Should the mineral lease awarded by the Louisiana State Mineral Board be subsequently modified, cancelled or abrogated due to the existence of conflicting leases, operating agreements, private claims or other future obligations or conditions which may affect all or any portion of the leased Tract, it shall not relieve the Lessee of the obligation to pay any bonus due thereon to the Louisiana State Mineral Board, nor shall the Louisiana State Mineral Board be obligated to refund any consideration paid by the Lessor prior to such modification, cancellation, or abrogation, including, but not limited to, bonuses, rentals and royalties.

NOTE: The State of Louisiana does hereby reserve, and this lease shall be subject to, the imprescriptible right of surface use in the nature of a

servitude in favor of the Department of Natural Resources, including its Offices and Commissions, for the sole purpose of implementing, constructing, servicing and maintaining approved coastal zone management and/or restoration projects. Utilization of any and all rights derived under this lease by the mineral lessee, its agents, successors or assigns, shall not interfere with nor hinder the reasonable surface use by the Department of Natural Resources, its Offices or Commissions, as herein above reserved.

Applicant: Harold J. Anderson, Inc.

Bidder	Cash Payment	Price / Acre	Rental	Oil	Gas	Other

EUGENE ISLAND AREA

BLOCK EI0037

BLOCK EI0038

BLOCK EI0058

$$z \prec$$

P.O.B.
X=2,000,000.00
Y=211,898.26

TR 2003060029
2,080.86 +/- ACS.
JUNE 2003

TRACT 35487 - Portion of Block 58, Eugene Island Area, Revised, St. Mary and Terrebonne Parishes, Louisiana

The beds and bottoms of all water bodies belonging to the State of Louisiana located in that portion of Block 58, Eugene Island Area, Revised, together with any present lands formed by accretion to the shoreline, located in St. Mary and Terrebonne Parishes, Louisiana, and not presently under mineral lease on June 11, 2003, the geographical area of which is more fully described as follows: Beginning at the Northeast corner of said Block 58 having Coordinates of X = 2,000,000.00 and Y = 211,898.26; thence South 10,101.95 feet on the East line of said Block 58 to a point having Coordinates of X = 2,000,000.00 and Y = 201,796.31; thence Northwesterly on a straight line to a point having Coordinates of X = 1,998,627 and Y = 203,119; thence Northwesterly on a straight line to a point having Coordinates of X = 1,996,877 and Y = 204,647; thence Northwesterly along an arc having a radius of 18,240.60 feet and a center at X = 2,008,058 and Y = 219,434 to a point having Coordinates of X = 1,994,484 and Y = 207,177; thence Northwesterly on a straight line to a point having Coordinates of X = 1,993,669 and Y = 208,223; thence Northwesterly along an arc having a radius of 18,240.60 feet and a center at X = 2,008,873 and Y = 218,388 to a point having Coordinates of X = 1,992,024 and Y = 210,737; thence Northwesterly on a straight line to a point having Coordinates of X = 1,991,724 and Y = 211,291; thence Northwesterly on a straight line to a point having Coordinates of X = 1,991,392 and Y = 211,653; thence Northwesterly on a straight line to a point on the North line of said Block 58 having Coordinates of X = 1,991,131.51 and Y = 211,898.26; thence East 8,868.49 feet to the point of beginning, containing approximately **1,135.67 acres, LESS AND EXCEPT** that portion thereof, if any, lying seaward of the line three nautical miles from the coast line of Louisiana, as said three mile line has been decreed by the Supreme Court of the United States, as determined by a Special Master appointed therein, in litigation styled **United States v. State of Louisiana et al No. 9 Original**, in 1975, all as more particularly outlined on a plat in the Office of Mineral Resources, Department of Natural Resources. All bearings, distances and coordinates are based on the Louisiana Coordinate System of 1927, (South Zone).

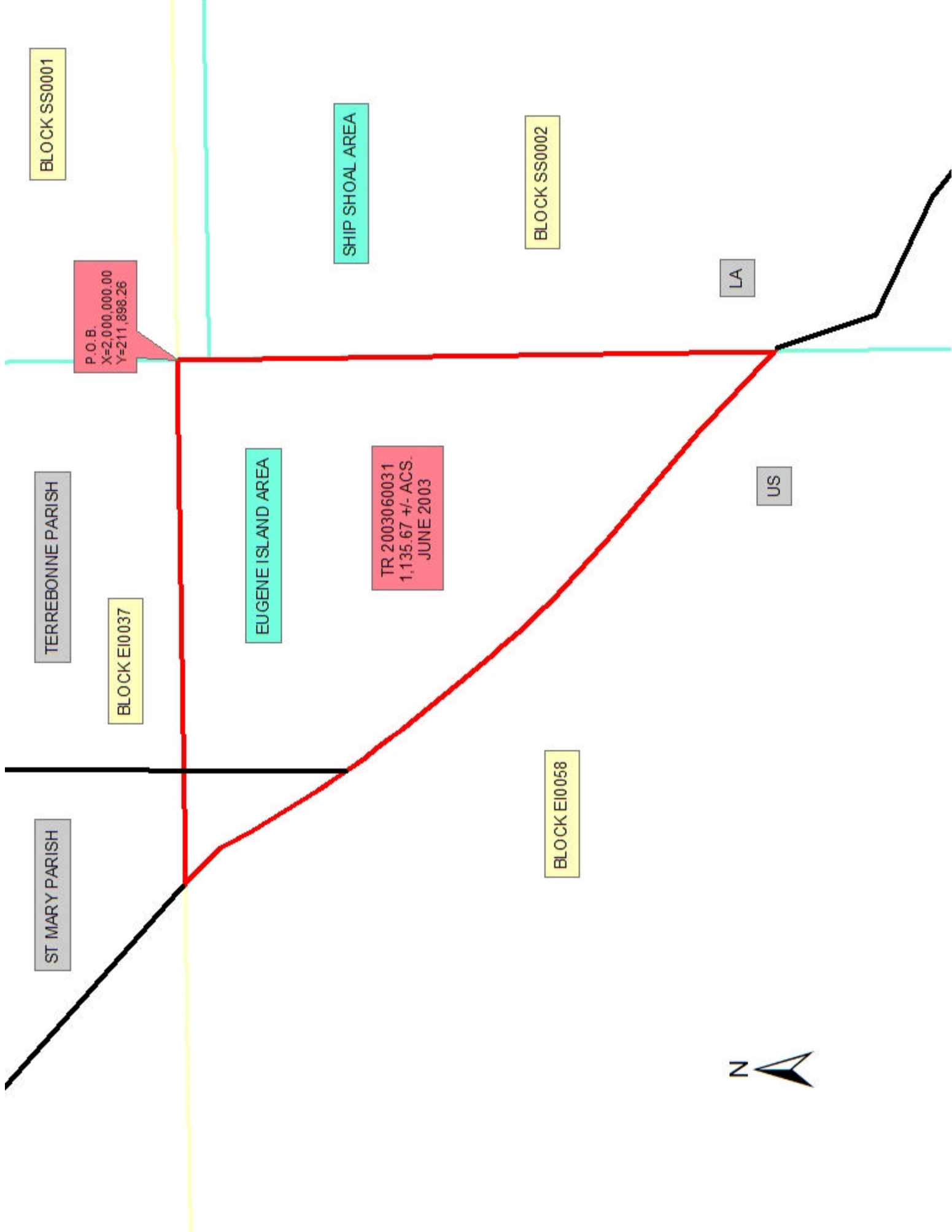
NOTE: The above description of the Tract nominated for lease has been provided and corrected, where required, exclusively by the nomination party. Any mineral lease selected from this Tract and awarded by the Louisiana State Mineral Board shall be without warranty of any kind, either express, implied, or statutory, including, but not limited to, the implied warranties of merchantability and fitness for a particular purpose. Should the mineral lease awarded by the Louisiana State Mineral Board be subsequently modified, cancelled or abrogated due to the existence of conflicting leases, operating agreements, private claims or other future obligations or conditions which may affect all or any portion of the leased Tract, it shall not relieve the Lessee of the obligation to pay any bonus due thereon to the Louisiana State Mineral Board, nor shall the Louisiana State Mineral Board be obligated to refund any consideration

paid by the Lessor prior to such modification, cancellation, or abrogation, including, but not limited to, bonuses, rentals and royalties.

NOTE: The State of Louisiana does hereby reserve, and this lease shall be subject to, the imprescriptible right of surface use in the nature of a servitude in favor of the Department of Natural Resources, including its Offices and Commissions, for the sole purpose of implementing, constructing, servicing and maintaining approved coastal zone management and/or restoration projects. Utilization of any and all rights derived under this lease by the mineral lessee, its agents, successors or assigns, shall not interfere with nor hinder the reasonable surface use by the Department of Natural Resources, its Offices or Commissions, as herein above reserved.

Applicant: Harold J. Anderson, Inc.

Bidder	Cash Payment	Price / Acre	Rental	Oil	Gas	Other



BLOCK SS0001

BLOCK SS0002

SHIP SHOAL AREA

LA

US

TERREBONNE PARISH

BLOCK EI0037

EUGENE ISLAND AREA

TR 2003060031
1,135.67 +/- ACS.
JUNE 2003

BLOCK EI0058

ST MARY PARISH

P.O.B.
X=2,000,000.00
Y=211,898.26



TRACT 35488 - Portion of Block 2, Ship Shoal Area, Terrebonne Parish, Louisiana

The beds and bottoms of all water bodies belonging to the State of Louisiana located in that portion of Block 2, Ship Shoal Area, together with any present lands formed by accretion to the shoreline, located in Terrebonne Parish, Louisiana, and not presently under mineral lease on June 11, 2003, the geographical area of which is more fully described as follows: Beginning at a point on the North line of said Block 2 having Coordinates of X = 2,007,800.00 and Y = 211,361.22; thence South 13,961.54 feet to a point on the South line of said Block 2 having Coordinates of X = 2,007,800.00 and Y = 197,399.68; thence West 3,432.49 feet to a point having Coordinates of X = 2,004,367.51 and Y = 197,399.68; thence Northwesterly along an arc having a radius of 18,240.60 feet and a center at X = 2,016,243 and Y = 211,245 to a point having Coordinates of X = 2,002,812 and Y = 198,903; thence Northwesterly on a straight line to a point having Coordinates of X = 2,001,329 and Y = 200,516; thence Northwesterly on a straight line to a point on the West line of said Block 2 having Coordinates of X = 2,000,000.00 and Y = 201,796.31; thence North 9,564.91 feet to a point having Coordinates of X = 2,000,000.00 and Y = 211,361.22; thence East 7,800.00 feet to the point of beginning, containing approximately **2,280.98 acres, LESS AND EXCEPT** that portion thereof, if any, lying seaward of the line three nautical miles from the coast line of Louisiana, as said three mile line has been decreed by the Supreme Court of the United States, as determined by a Special Master appointed therein, in litigation styled **United States v. State of Louisiana et al No. 9 Original**, in 1975, all as more particularly outlined on a plat in the Office of Mineral Resources, Department of Natural Resources. All bearings, distances and coordinates are based on the Louisiana Coordinate System of 1927, (South Zone).

NOTE: The above description of the Tract nominated for lease has been provided and corrected, where required, exclusively by the nomination party. Any mineral lease selected from this Tract and awarded by the Louisiana State Mineral Board shall be without warranty of any kind, either express, implied, or statutory, including, but not limited to, the implied warranties of merchantability and fitness for a particular purpose. Should the mineral lease awarded by the Louisiana State Mineral Board be subsequently modified, cancelled or abrogated due to the existence of conflicting leases, operating agreements, private claims or other future obligations or conditions which may affect all or any portion of the leased Tract, it shall not relieve the Lessee of the obligation to pay any bonus due thereon to the Louisiana State Mineral Board, nor shall the Louisiana State Mineral Board be obligated to refund any consideration paid by the Lessor prior to such modification, cancellation, or abrogation, including, but not limited to, bonuses, rentals and royalties.

NOTE: The State of Louisiana does hereby reserve, and this lease shall be subject to, the imprescriptible right of surface use in the nature of a servitude in favor of the Department of Natural Resources, including its

Offices and Commissions, for the sole purpose of implementing, constructing, servicing and maintaining approved coastal zone management and/or restoration projects. Utilization of any and all rights derived under this lease by the mineral lessee, its agents, successors or assigns, shall not interfere with nor hinder the reasonable surface use by the Department of Natural Resources, its Offices or Commissions, as herein above reserved.

Applicant: Harold J. Anderson, Inc.

Bidder	Cash Payment	Price / Acre	Rental	Oil	Gas	Other



US

LA

BLOCK EI0058

EUGENE ISLAND AREA

TR 2003060030
2,280.98 +/- ACS.
JUNE 2003

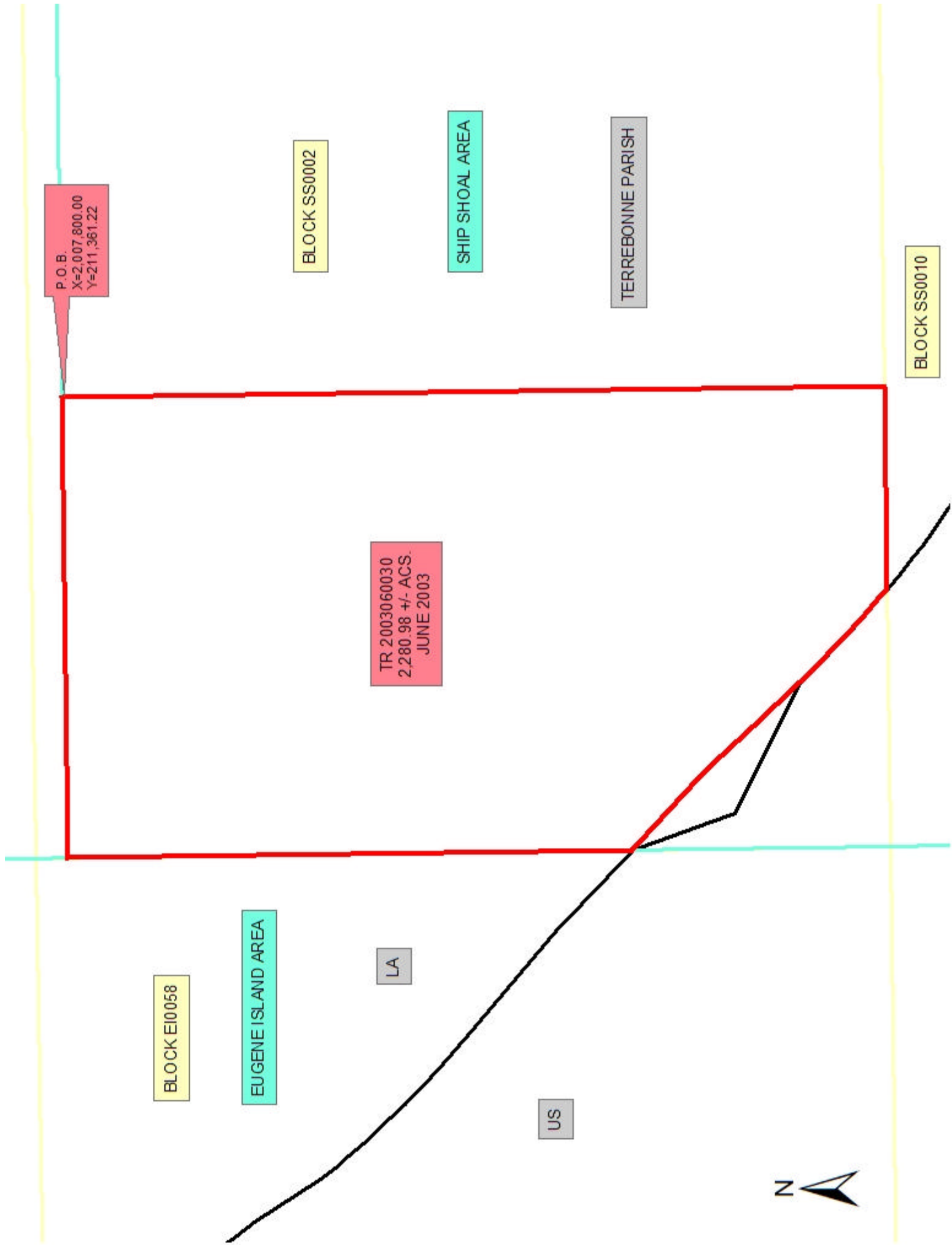
P.O.B.
X=2,007,800.00
Y=211,361.22

BLOCK SS0002

SHIP SHOAL AREA

TERREBONNE PARISH

BLOCK SS0010



TRACT 35489 - Portion of Block 2, Ship Shoal Area, Terrebonne Parish, Louisiana

The beds and bottoms of all water bodies belonging to the State of Louisiana located in that portion of Block 2, Ship Shoal Area, together with any present lands formed by accretion to the shoreline, located in Terrebonne Parish, Louisiana, and not presently under mineral lease on June 11, 2003, the geographical area of which is more fully described as follows: Beginning at a point on the North line of said Block 2 having Coordinates of X = 2,007,800.00 and Y = 211,361.22; thence East 7,800.00 feet on the North line of said Block 2 to its Northeast corner having Coordinates of X = 2,015,600.00 and Y = 211,361.22; thence South 13,961.54 feet on the East line of said Block 2 to its Southeast corner having Coordinates of X = 2,015,600.00 and Y = 197,399.68; thence West 7,800.00 feet on the South line of said Block 2 to a point having Coordinates of X = 2,007,800.00 and Y = 197,399.68; thence North 13,961.54 feet to the point of beginning, containing approximately **2,500.00 acres**, all as more particularly outlined on a plat on file in the Office of Mineral Resources, Department of Natural Resources. All bearings, distances and coordinates are based on Louisiana Coordinate System of 1927, (North or South Zone).

NOTE: The above description of the Tract nominated for lease has been provided and corrected, where required, exclusively by the nomination party. Any mineral lease selected from this Tract and awarded by the Louisiana State Mineral Board shall be without warranty of any kind, either express, implied, or statutory, including, but not limited to, the implied warranties of merchantability and fitness for a particular purpose. Should the mineral lease awarded by the Louisiana State Mineral Board be subsequently modified, cancelled or abrogated due to the existence of conflicting leases, operating agreements, private claims or other future obligations or conditions which may affect all or any portion of the leased Tract, it shall not relieve the Lessee of the obligation to pay any bonus due thereon to the Louisiana State Mineral Board, nor shall the Louisiana State Mineral Board be obligated to refund any consideration paid by the Lessor prior to such modification, cancellation, or abrogation, including, but not limited to, bonuses, rentals and royalties.

NOTE: The State of Louisiana does hereby reserve, and this lease shall be subject to, the imprescriptible right of surface use in the nature of a servitude in favor of the Department of Natural Resources, including its Offices and Commissions, for the sole purpose of implementing, constructing, servicing and maintaining approved coastal zone management and/or restoration projects. Utilization of any and all rights derived under this lease by the mineral lessee, its agents, successors or assigns, shall not interfere with nor hinder the reasonable surface use by the Department of Natural Resources, its Offices or Commissions, as herein above reserved.

NOTE: The Department of Wildlife and Fisheries has designated certain areas in the coastal waters of the State of Louisiana as Oyster Seed Bed Areas. The exact location of those Seed Bed Areas must be obtained from the Department of Wildlife and Fisheries and any work done under a mineral lease from the State of Louisiana may necessarily be conducted in conformity with the rules and regulations promulgated by the said Department of Wildlife and Fisheries for Oyster Seed Bed Areas.

Applicant: Harold J. Anderson, Inc.

Bidder	Cash Payment	Price / Acre	Rental	Oil	Gas	Other

LAKE CHAPEAU

T21S - R11E

BLOCK SS0003

BLOCK SS0009

BLOCK SS0010

BLOCK SS0002

TR 2003060021
2,500.00 +/- ACS.
JUNE 2003

P.O.B.
X=2,007,800.00
Y=211,361.22

SHIP SHOAL AREA

TERREBONNE PARISH

LA

US

