

**TRACT 35476 - Portion of Block 68, Main Pass Area, Revised, Plaquemines Parish, Louisiana**

The beds and bottoms of all water bodies belonging to the State of Louisiana located in that portion of Block 68, Main Pass Area, Revised, together with any present lands formed by accretion to the shoreline, located in Plaquemines Parish, Louisiana, and not presently under mineral lease on June 11, 2003, the geographical area of which is more fully described as follows: Beginning at a point on the West line of said Block 68, also being the most Southern Northwest corner of State Lease No. 1354, as amended, having Coordinates of X = 2,719,640.00 and Y = 227,703.70; thence along the boundaries of said State Lease No. 1354 the following: East 3,883.52 feet to a point having Coordinates of X = 2,723,523.52 and Y = 227,703.70, North 12 degrees 25 minutes 03 seconds West 108.87 feet to a point having Coordinates of X = 2,723,500.11 and Y = 227,810.02, North 380.00 feet to a point having Coordinates of X = 2,723,500.11 and Y = 228,190.02, North 08 degrees 44 minutes 46 seconds East 394.59 feet to a point having Coordinates of X = 2,723,560.11 and Y = 228,580.02, North 16 degrees 11 minutes 21 seconds East 322.80 feet to a point having Coordinates of X = 2,723,650.11 and Y = 228,890.02, North 20 degrees 33 minutes 22 seconds East 341.76 feet to a point having Coordinates of X = 2,723,770.11 and Y = 229,210.02, North 26 degrees 16 minutes 00 seconds East 429.33 feet to a point having Coordinates of X = 2,723,960.11 and Y = 229,595.02, North 73 degrees 53 minutes 12 seconds West 468.40 feet to a point having Coordinates of X = 2,723,510.11 and Y = 229,725.02, North 76 degrees 50 minutes 12 seconds West 636.73 feet to a point having Coordinates of X = 2,722,890.11 and Y = 229,870.02, North 80 degrees 56 minutes 35 seconds West 698.71 feet to a point having Coordinates of X = 2,722,200.11 and Y = 229,980.01 and North 09 degrees 06 minutes 08 seconds East 109.10 feet to a point having Coordinates of X = 2,722,217.37 and Y = 230,087.73, also being a point on the South line of State Lease No. 10745, as amended; thence along the boundaries of said State Lease No. 10745 the following: South 69 degrees 36 minutes 54 seconds West 17.95 feet to a point having Coordinates of X = 2,722,200.55 and Y = 230,081.48, North 11 degrees 09 minutes 34 seconds East 457.17 feet to a point having Coordinates of X = 2,722,289.03 and Y = 230,529.99, North 15 degrees 49 minutes 09 seconds East 311.81 feet to a point having Coordinates of X = 2,722,374.03 and Y = 230,829.99, North 14 degrees 55 minutes 53 seconds East 310.48 feet to a point having Coordinates of X = 2,722,454.03 and Y = 231,129.99, North 14 degrees 02 minutes 10 seconds East 309.23 feet to a point having Coordinates of X = 2,722,529.02 and Y = 231,429.99, North 16 degrees 41 minutes 51 seconds East 313.21 feet to a point having Coordinates of X = 2,722,619.01 and Y = 231,729.99, North 18 degrees 26 minutes 06 seconds East 316.23 feet to a point having Coordinates of X = 2,722,719.02 and Y = 232,029.99, North 20 degrees 08 minutes 11 seconds East 319.53 feet to a point having Coordinates of X = 2,722,829.02 and Y = 232,329.99, North 26 degrees 33 minutes 54 seconds East 670.82 feet to a point having Coordinates of X = 2,723,129.02 and Y = 232,929.99, North 33 degrees 41 minutes 24 seconds East 360.56 feet to a point having Coordinates of X = 2,723,329.02 and Y = 233,230.00, North 37 degrees 28

minutes 34 seconds East 378.02 feet to a point having Coordinates of X = 2,723,559.02 and Y = 233,530.00 and North 44 degrees 07 minutes 32 seconds East 417.94 feet to its Northwest corner having Coordinates of X = 2,723,850.00 and Y = 233,830.00, also being a point on the North line of said Block 68, Southwest corner of said Block 64 and Southeast corner of said Block 65; thence East 1,099.18 feet along the North line of said State Lease No. 10745 to its most North Northeast corner and a point on the South line of said Block 64 to a point on the Three Mile Line set out in the June, 1975, decree of the Supreme Court having Coordinates of X = 2,724,949.18 and Y = 233,830.00; thence North 65 degrees 34 minutes 3 seconds West 1,207.29 feet along a straight line to a point on the West line of said Block 64 and the East line of said Block 65, having Coordinates of X = 2,723,850.00 and Y = 234,329.36; thence North 65 degrees 34 minutes 04 seconds West 2,436.16 feet along a straight line to a point having Coordinates of X = 2,721,632.00 and Y = 235,337.00; thence along an arc to the left having a center of X = 2,707,635 and Y = 223,640 to a point having Coordinates of X = 2,719,640.00 and Y = 237,373.48; thence South 3,543.48 feet to a point on the South line of said Block 65 and the Northwest corner of said Block 68 having Coordinates of X = 2,719,640.00 and Y = 233,830.00; thence continue South 6,126.30 feet along the West line of said Block 68 to the point of beginning, containing approximately **657.75 acres**, , **LESS AND EXCEPT** that portion thereof, if any, lying seaward of the line three nautical miles from the coast line of Louisiana, as said three mile line has been decreed by the Supreme Court of the United States, as determined by a Special Master appointed therein, in litigation styled **United States v. State of Louisiana et al No. 9 Original**, in 1975, all as more particularly outlined on a plat in the Office of Mineral Resources, Department of Natural Resources. All bearings, distances and coordinates are based on the Louisiana Coordinate System of 1927, (South Zone).

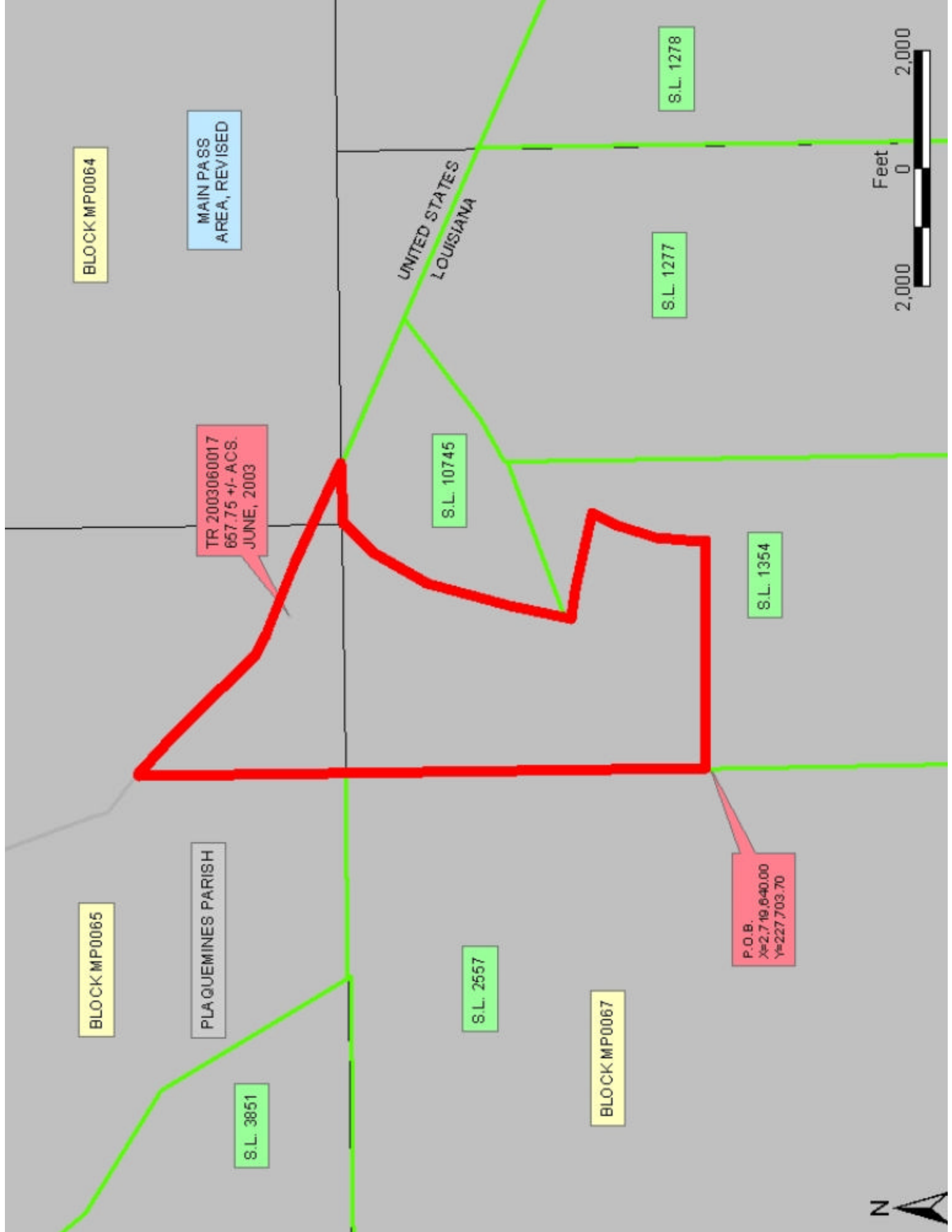
NOTE: The above description of the Tract nominated for lease has been provided and corrected, where required, exclusively by the nomination party. Any mineral lease selected from this Tract and awarded by the Louisiana State Mineral Board shall be without warranty of any kind, either express, implied, or statutory, including, but not limited to, the implied warranties of merchantability and fitness for a particular purpose. Should the mineral lease awarded by the Louisiana State Mineral Board be subsequently modified, cancelled or abrogated due to the existence of conflicting leases, operating agreements, private claims or other future obligations or conditions which may affect all or any portion of the leased Tract, it shall not relieve the Lessee of the obligation to pay any bonus due thereon to the Louisiana State Mineral Board, nor shall the Louisiana State Mineral Board be obligated to refund any consideration paid by the Lessor prior to such modification, cancellation, or abrogation, including, but not limited to, bonuses, rentals and royalties.

NOTE: The State of Louisiana does hereby reserve, and this lease shall be subject to, the imprescriptible right of surface use in the nature of a

servitude in favor of the Department of Natural Resources, including its Offices and Commissions, for the sole purpose of implementing, constructing, servicing and maintaining approved coastal zone management and/or restoration projects. Utilization of any and all rights derived under this lease by the mineral lessee, its agents, successors or assigns, shall not interfere with nor hinder the reasonable surface use by the Department of Natural Resources, its Offices or Commissions, as herein above reserved.

Applicant: Cypress Energy Corporation

| Bidder | Cash<br>Payment | Price /<br>Acre | Rental | Oil | Gas | Other |
|--------|-----------------|-----------------|--------|-----|-----|-------|
|        |                 |                 |        |     |     |       |
|        |                 |                 |        |     |     |       |
|        |                 |                 |        |     |     |       |
|        |                 |                 |        |     |     |       |



**TRACT 35477 - Portion of Block 36, Eugene Island Area, Revised, St. Mary and Terrebonne Parishes, Louisiana**

The beds and bottoms of all water bodies belonging to the State of Louisiana located in that portion of Block 36, Eugene Island Area, Revised, together with any present lands formed by accretion to the shoreline, located in St. Mary and Terrebonne Parishes, Louisiana, and not presently under mineral lease on June 11, 2003, the geographical area of which is more fully described as follows: Beginning at a point on the West line of said Block 36 having Coordinates of X = 1,984,977.84 and Y = 234,195.00; thence North 10,683.15 feet on the West line of said Block 36 to a point having Coordinates of X = 1,984,977.84 and Y = 244,878.15; thence Southeasterly on a straight line to a point having Coordinates of X = 1,993,420.00 and Y = 241,930.00; thence Southeasterly on a straight line to a point having Coordinates of X = 1,995,220 and Y = 235,805; thence Southeasterly on a straight line to a point having Coordinates of X = 1,996,356.37 and Y = 234,195.00; thence West 11,378.53 feet to the point of beginning, containing approximately **1,998.85 acres**, all as more particularly outlined on a plat on file in the Office of Mineral Resources, Department of Natural Resources. All bearings, distances and coordinates are based on Louisiana Coordinate System of 1927, (North or South Zone).

NOTE: The above description of the Tract nominated for lease has been provided and corrected, where required, exclusively by the nomination party. Any mineral lease selected from this Tract and awarded by the Louisiana State Mineral Board shall be without warranty of any kind, either express, implied, or statutory, including, but not limited to, the implied warranties of merchantability and fitness for a particular purpose. Should the mineral lease awarded by the Louisiana State Mineral Board be subsequently modified, cancelled or abrogated due to the existence of conflicting leases, operating agreements, private claims or other future obligations or conditions which may affect all or any portion of the leased Tract, it shall not relieve the Lessee of the obligation to pay any bonus due thereon to the Louisiana State Mineral Board, nor shall the Louisiana State Mineral Board be obligated to refund any consideration paid by the Lessor prior to such modification, cancellation, or abrogation, including, but not limited to, bonuses, rentals and royalties.

NOTE: The above described tract may be in the vicinity of existing shell reefs where drilling and dredging operations must be conducted in strict conformity with the regulations adopted by the Louisiana Department of Wildlife and Fisheries and/or the U.S. Corps of Engineers, U.S. Army.

NOTE: The State of Louisiana does hereby reserve, and this lease shall be subject to, the imprescriptible right of surface use in the nature of a servitude in favor of the Department of Natural Resources, including its Offices and Commissions, for the sole purpose of implementing, constructing, servicing and maintaining approved coastal zone management and/or restoration projects. Utilization of any and all rights derived

under this lease by the mineral lessee, its agents, successors or assigns, shall not interfere with nor hinder the reasonable surface use by the Department of Natural Resources, its Offices or Commissions, as herein above reserved.

NOTE: The Department of Wildlife and Fisheries has designated certain areas in the coastal waters of the State of Louisiana as Oyster Seed Bed Areas. The exact location of those Seed Bed Areas must be obtained from the Department of Wildlife and Fisheries and any work done under a mineral lease from the State of Louisiana may necessarily be conducted in conformity with the rules and regulations promulgated by the said Department of Wildlife and Fisheries for Oyster Seed Bed Areas.

Applicant: Harold J. Anderson, Inc.

| Bidder | Cash<br>Payment | Price /<br>Acre | Rental | Oil | Gas | Other |
|--------|-----------------|-----------------|--------|-----|-----|-------|
|        |                 |                 |        |     |     |       |
|        |                 |                 |        |     |     |       |
|        |                 |                 |        |     |     |       |
|        |                 |                 |        |     |     |       |

ATCHAFALAYA WMA

TERREBONNE PARISH



T20S-R11E

BLOCK EI0036

TR 2003060025  
1,998.85 +/- ACS.  
JUNE 2003

P.O.B.  
X=1,984,977.84  
Y=234,195.00

BLOCK EI0016

ST MARY PARISH

EUGENE ISLAND AREA

BLOCK EI0035

**TRACT 35478 - Portion of Block 35, Eugene Island Area, Revised, St. Mary Parish, Louisiana**

The beds and bottoms of all water bodies belonging to the State of Louisiana located in that portion of Block 35, Eugene Island Area, Revised, together with any present lands formed by accretion to the shoreline, located in St. Mary Parish, Louisiana, and not presently under mineral lease on June 11, 2003, the geographical area of which is more fully described as follows: Beginning at the Northeast corner of said Block 35 having Coordinates of X = 1,984,977.84 and Y = 240,895.42 thence South 7,249.29 feet on the East line of said Block 35 to a point having Coordinates of X = 1,984,977.84 and Y = 233,646.13; thence West 15,022.16 feet to a point on the West line of said Block 35 having Coordinates of X = 1,969,955.68 and Y = 233,646.13; thence North 7,249.29 feet on the West line of said Block 35 to its Northwest corner having Coordinates of X = 1,969,955.68 and Y = 240,895.42; thence East 15,022.16 feet to the point of beginning, containing approximately **2,500.00 acres**, all as more particularly outlined on a plat on file in the Office of Mineral Resources, Department of Natural Resources. All bearings, distances and coordinates are based on Louisiana Coordinate System of 1927, (North or South Zone).

NOTE: The above description of the Tract nominated for lease has been provided and corrected, where required, exclusively by the nomination party. Any mineral lease selected from this Tract and awarded by the Louisiana State Mineral Board shall be without warranty of any kind, either express, implied, or statutory, including, but not limited to, the implied warranties of merchantability and fitness for a particular purpose. Should the mineral lease awarded by the Louisiana State Mineral Board be subsequently modified, cancelled or abrogated due to the existence of conflicting leases, operating agreements, private claims or other future obligations or conditions which may affect all or any portion of the leased Tract, it shall not relieve the Lessee of the obligation to pay any bonus due thereon to the Louisiana State Mineral Board, nor shall the Louisiana State Mineral Board be obligated to refund any consideration paid by the Lessor prior to such modification, cancellation, or abrogation, including, but not limited to, bonuses, rentals and royalties.

NOTE: The above described tract may be in the vicinity of existing shell reefs where drilling and dredging operations must be conducted in strict conformity with the regulations adopted by the Louisiana Department of Wildlife and Fisheries and/or the U.S. Corps of Engineers, U.S. Army.

NOTE: The State of Louisiana does hereby reserve, and this lease shall be subject to, the imprescriptible right of surface use in the nature of a servitude in favor of the Department of Natural Resources, including its Offices and Commissions, for the sole purpose of implementing, constructing, servicing and maintaining approved coastal zone management and/or restoration projects. Utilization of any and all rights derived under this lease by the mineral lessee, its agents, successors or assigns,



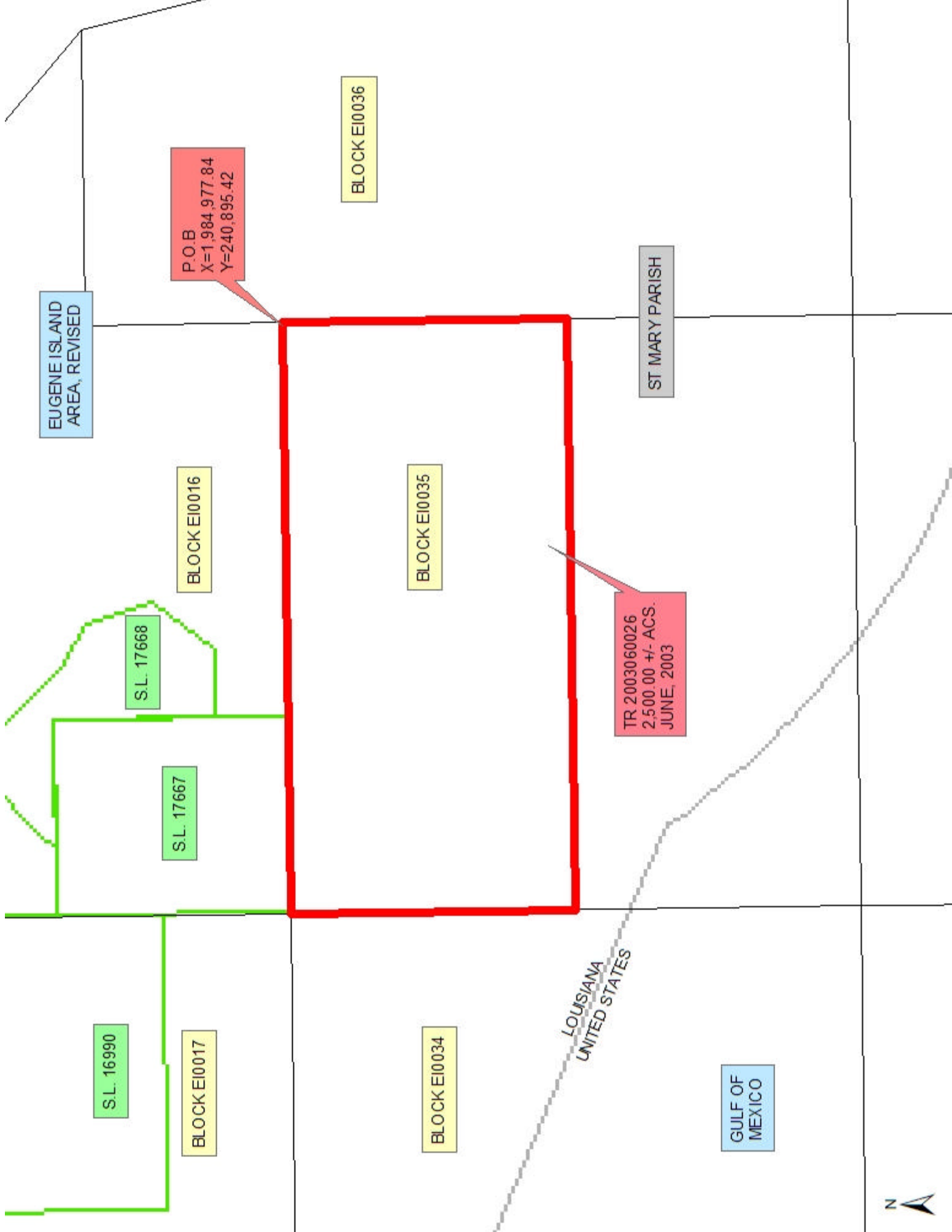
shall not interfere with nor hinder the reasonable surface use by the Department of Natural Resources, its Offices or Commissions, as herein above reserved.

NOTE: It appears, according to our records, that a portion of this Tract is located within the restrictive safety fairway area as set out by the Corps of Engineers, U.S. Army and/or the restrictive anchorage area as set out by the U.S. Coast Guard.

NOTE: The Department of Wildlife and Fisheries has designated certain areas in the coastal waters of the State of Louisiana as Oyster Seed Bed Areas. The exact location of those Seed Bed Areas must be obtained from the Department of Wildlife and Fisheries and any work done under a mineral lease from the State of Louisiana may necessarily be conducted in conformity with the rules and regulations promulgated by the said Department of Wildlife and Fisheries for Oyster Seed Bed Areas.

Applicant: Harold J. Anderson, Inc.

| Bidder | Cash<br>Payment | Price /<br>Acre | Rental | Oil | Gas | Other |
|--------|-----------------|-----------------|--------|-----|-----|-------|
|        |                 |                 |        |     |     |       |
|        |                 |                 |        |     |     |       |
|        |                 |                 |        |     |     |       |
|        |                 |                 |        |     |     |       |



EUGENE ISLAND  
AREA, REVISED

P.O.B  
X=1,984,977.84  
Y=240,895.42

BLOCK EI0036

ST MARY PARISH

BLOCK EI0016

BLOCK EI0035

S.L. 17668

S.L. 17667

TR 2003060026  
2,500.00 +/- ACS.  
JUNE, 2003

S.L. 16990

BLOCK EI0017

BLOCK EI0034

LOUISIANA  
UNITED STATES

GULF OF  
MEXICO



**TRACT 35479 - Portion of Block 70, Main Pass Area, Revised, Plaquemines Parish, Louisiana**

The beds and bottoms of all water bodies belonging to the State of Louisiana located in that portion of Block 70, Main Pass Area, Revised, together with any present lands formed by accretion to the shoreline, located in Plaquemines Parish, Louisiana, and not presently under mineral lease on June 11, 2003, the geographical area of which is more fully described as follows: Beginning at a point on the East line of said Block 69 and the West line of said Block 70 having Coordinates of X = 2,740,710.00 and Y = 218,325.00; thence East 5,267.50 feet, into said Block 70, to a point having Coordinates of X = 2,745,977.50 and Y = 218,325.00; thence North 6,417.00 feet to a point on the South line of State Lease No. 16872 having Coordinates of X = 2,745,977.50 and Y = 224,742.00; thence West 5,267.50 feet along the South line of said State Lease No. 16872 to its Southwest corner, the Southeast corner of State Lease No. 16871, and also a point on the West line of said Block 70 and the East line of said Block 69, having Coordinates of X = 2,740,710.00 and Y = 224,742.00; thence continue West 2,169.46 feet, into said Block 69, along the South line of said State Lease No. 16871 to its Southwest corner, also being a point on the East line of State Lease No. 1278, as amended, having Coordinates of X = 2,738,540.54 and Y = 224,742.00; thence along the boundaries of said State Lease No. 1278 the following: South 31 degrees 15 minutes 22 seconds West 1,602.61 feet, East 1.00 foot and South 15 degrees 18 minutes 46 seconds West 5,232.77 feet to its Southeast corner having Coordinates of X = 2,736,328.08 and Y = 218,325.00; thence East 4,381.92 feet to the point of beginning, containing approximately **1,284.99 acres**, , all as more particularly outlined on a plat on file in the Office of Mineral Resources, Department of Natural Resources. All bearings, distances and coordinates are based on Louisiana Coordinate System of 1927, (North or South Zone).

NOTE: The above description of the Tract nominated for lease has been provided and corrected, where required, exclusively by the nomination party. Any mineral lease selected from this Tract and awarded by the Louisiana State Mineral Board shall be without warranty of any kind, either express, implied, or statutory, including, but not limited to, the implied warranties of merchantability and fitness for a particular purpose. Should the mineral lease awarded by the Louisiana State Mineral Board be subsequently modified, cancelled or abrogated due to the existence of conflicting leases, operating agreements, private claims or other future obligations or conditions which may affect all or any portion of the leased Tract, it shall not relieve the Lessee of the obligation to pay any bonus due thereon to the Louisiana State Mineral Board, nor shall the Louisiana State Mineral Board be obligated to refund any consideration paid by the Lessor prior to such modification, cancellation, or abrogation, including, but not limited to, bonuses, rentals and royalties.

NOTE: The State of Louisiana does hereby reserve, and this lease shall be subject to, the imprescriptible right of surface use in the nature of a

servitude in favor of the Department of Natural Resources, including its Offices and Commissions, for the sole purpose of implementing, constructing, servicing and maintaining approved coastal zone management and/or restoration projects. Utilization of any and all rights derived under this lease by the mineral lessee, its agents, successors or assigns, shall not interfere with nor hinder the reasonable surface use by the Department of Natural Resources, its Offices or Commissions, as herein above reserved.

Applicant: Cypress Energy Corporation

| Bidder | Cash<br>Payment | Price /<br>Acre | Rental | Oil | Gas | Other |
|--------|-----------------|-----------------|--------|-----|-----|-------|
|        |                 |                 |        |     |     |       |
|        |                 |                 |        |     |     |       |
|        |                 |                 |        |     |     |       |
|        |                 |                 |        |     |     |       |



PLAQUEMINES PARISH

MAIN PASS  
AREA, REVISED

S.L. 16871

S.L. 16872

S.L. 1278

BLOCK MP0069

BLOCK MP0070

P.O.B.  
X=2,740,710.00  
Y=218,235.00

TR 6-18  
1,284.99 +/- ACS.  
JUNE 2003



**TRACT 35480 - Portion of Block 36, Eugene Island Area, Revised, St. Mary and Terrebonne Parishes, Louisiana**

The beds and bottoms of all water bodies belonging to the State of Louisiana located in that portion of Block 36, Eugene Island Area, Revised, together with any present lands formed by accretion to the shoreline, located in St. Mary and Terrebonne Parishes, Louisiana, and not presently under mineral lease on June 11, 2003, the geographical area of which is more fully described as follows: Beginning at the Southwest corner of said Block 36 having Coordinates of X = 1,984,977.84 and Y = 226,396.84; thence North 7,798.16 feet on the West line of said Block 36 to a point having Coordinates of X = 1,984,977.84 and Y = 234,195.00; thence East 11,378.53 feet to a point having Coordinates of X = 1,996,356.37 and Y = 234,195.00; thence Southeasterly on a straight line to a point having Coordinates of X = 1,996,506 and Y = 233,983; thence Southeasterly on a straight line to a point having Coordinates of X = 1,998,568 and Y = 230,370; thence Southeasterly on a straight line to a point on the East line of said Block 36 having Coordinates of X = 2,000,000.00 and Y = 228,609.87; thence South 2,213.03 feet on the East line of said Block 36 to its Southeast corner having Coordinates of X = 2,000,000.00 and Y = 226,396.84; thence West 15,022.16 feet to the point of beginning, containing approximately **2,438.69 acres**, all as more particularly outlined on a plat on file in the Office of Mineral Resources, Department of Natural Resources. All bearings, distances and coordinates are based on Louisiana Coordinate System of 1927, (North or South Zone).

NOTE: The above description of the Tract nominated for lease has been provided and corrected, where required, exclusively by the nomination party. Any mineral lease selected from this Tract and awarded by the Louisiana State Mineral Board shall be without warranty of any kind, either express, implied, or statutory, including, but not limited to, the implied warranties of merchantability and fitness for a particular purpose. Should the mineral lease awarded by the Louisiana State Mineral Board be subsequently modified, cancelled or abrogated due to the existence of conflicting leases, operating agreements, private claims or other future obligations or conditions which may affect all or any portion of the leased Tract, it shall not relieve the Lessee of the obligation to pay any bonus due thereon to the Louisiana State Mineral Board, nor shall the Louisiana State Mineral Board be obligated to refund any consideration paid by the Lessor prior to such modification, cancellation, or abrogation, including, but not limited to, bonuses, rentals and royalties.

NOTE: The above described tract may be in the vicinity of existing shell reefs where drilling and dredging operations must be conducted in strict conformity with the regulations adopted by the Louisiana Department of Wildlife and Fisheries and/or the U.S. Corps of Engineers, U.S. Army.

NOTE: The State of Louisiana does hereby reserve, and this lease shall be subject to, the imprescriptible right of surface use in the nature of a

servitude in favor of the Department of Natural Resources, including its Offices and Commissions, for the sole purpose of implementing, constructing, servicing and maintaining approved coastal zone management and/or restoration projects. Utilization of any and all rights derived under this lease by the mineral lessee, its agents, successors or assigns, shall not interfere with nor hinder the reasonable surface use by the Department of Natural Resources, its Offices or Commissions, as herein above reserved.

NOTE: The Department of Wildlife and Fisheries has designated certain areas in the coastal waters of the State of Louisiana as Oyster Seed Bed Areas. The exact location of those Seed Bed Areas must be obtained from the Department of Wildlife and Fisheries and any work done under a mineral lease from the State of Louisiana may necessarily be conducted in conformity with the rules and regulations promulgated by the said Department of Wildlife and Fisheries for Oyster Seed Bed Areas.

Applicant: Harold J. Anderson, Inc.

| Bidder | Cash<br>Payment | Price /<br>Acre | Rental | Oil | Gas | Other |
|--------|-----------------|-----------------|--------|-----|-----|-------|
|        |                 |                 |        |     |     |       |
|        |                 |                 |        |     |     |       |
|        |                 |                 |        |     |     |       |
|        |                 |                 |        |     |     |       |

ST MARY PARISH

TERREBONNE PARISH

BLOCK SS0001

T20S - R11E

BLOCK E10037



BLOCK E10036

TR 2003060019  
2,438.69 +/- ACS.  
JUNE 2003

EUGENE ISLAND AREA

ST MARY PARISH

BLOCK E10035

BLOCK E10038

P.O.B.  
X=1,984,977.84  
Y=226,396.84



**TRACT 35481 - Portion of Block 35, Eugene Island Area, Revised, St. Mary Parish, Louisiana**

The beds and bottoms of all water bodies belonging to the State of Louisiana located in that portion of Block 35, Eugene Island Area, Revised, together with any present lands formed by accretion to the shoreline, located in St. Mary Parish, Louisiana, and not presently under mineral lease on June 11, 2003, the geographical area of which is more fully described as follows: Beginning at the Southeast corner of said Block 35 having Coordinates of X = 1984,977.84 and Y = 226,396.84; thence West 8,232.71 feet on the South line of said Block 35 to a point having Coordinates of X = 1,976,745.13 and Y = 226,396.84; thence Northwesterly on an arc having a radius of 18,240.60 feet and a center at X = 1,987,371 and Y = 241,272 to a point having Coordinates of X = 1,975,782 and Y = 227,186; thence Northwesterly on an arc having a radius of 18,240.60 feet and a center at X = 1,987,818 and Y = 240,892 to a point having Coordinates of X = 1,972,054 and Y = 231,367; thence Northwesterly on a straight line to a point on the West line of said Block 35 having Coordinates of X = 1,969,955.68 and Y = 232,284.83; thence North 1,361.30 feet on the West line of said Block 35 to a point having Coordinates of X = 1,969,955.68 and Y = 233,646.13; thence East 15,022.16 feet to a point on the East line of said Block 35 having Coordinates of X = 1,984,977.84 and Y = 233,646.13; thence South 7,249.29 feet to the point of beginning, containing approximately **2,002.07 acres, LESS AND EXCEPT** that portion thereof, if any, lying seaward of the line three nautical miles from the coast line of Louisiana, as said three mile line has been decreed by the Supreme Court of the United States, as determined by a Special Master appointed therein, in litigation styled **United States v. State of Louisiana et al No. 9 Original**, in 1975, all as more particularly outlined on a plat in the Office of Mineral Resources, Department of Natural Resources. All bearings, distances and coordinates are based on the Louisiana Coordinate System of 1927, (South Zone).

NOTE: The above description of the Tract nominated for lease has been provided and corrected, where required, exclusively by the nomination party. Any mineral lease selected from this Tract and awarded by the Louisiana State Mineral Board shall be without warranty of any kind, either express, implied, or statutory, including, but not limited to, the implied warranties of merchantability and fitness for a particular purpose. Should the mineral lease awarded by the Louisiana State Mineral Board be subsequently modified, cancelled or abrogated due to the existence of conflicting leases, operating agreements, private claims or other future obligations or conditions which may affect all or any portion of the leased Tract, it shall not relieve the Lessee of the obligation to pay any bonus due thereon to the Louisiana State Mineral Board, nor shall the Louisiana State Mineral Board be obligated to refund any consideration paid by the Lessor prior to such modification, cancellation, or abrogation, including, but not limited to, bonuses, rentals and royalties.

NOTE: The above described tract may be in the vicinity of existing shell reefs where drilling and dredging operations must be conducted in strict conformity with the regulations adopted by the Louisiana Department of Wildlife and Fisheries and/or the U.S. Corps of Engineers, U.S. Army.

NOTE: The State of Louisiana does hereby reserve, and this lease shall be subject to, the imprescriptible right of surface use in the nature of a servitude in favor of the Department of Natural Resources, including its Offices and Commissions, for the sole purpose of implementing, constructing, servicing and maintaining approved coastal zone management and/or restoration projects. Utilization of any and all rights derived under this lease by the mineral lessee, its agents, successors or assigns, shall not interfere with nor hinder the reasonable surface use by the Department of Natural Resources, its Offices or Commissions, as herein above reserved.

NOTE: The Department of Wildlife and Fisheries has designated certain areas in the coastal waters of the State of Louisiana as Oyster Seed Bed Areas. The exact location of those Seed Bed Areas must be obtained from the Department of Wildlife and Fisheries and any work done under a mineral lease from the State of Louisiana may necessarily be conducted in conformity with the rules and regulations promulgated by the said Department of Wildlife and Fisheries for Oyster Seed Bed Areas.

Applicant: Harold J. Anderson, Inc.

| Bidder | Cash<br>Payment | Price /<br>Acre | Rental | Oil | Gas | Other |
|--------|-----------------|-----------------|--------|-----|-----|-------|
|        |                 |                 |        |     |     |       |
|        |                 |                 |        |     |     |       |
|        |                 |                 |        |     |     |       |
|        |                 |                 |        |     |     |       |

EUGENE ISLAND AREA

BLOCK EI0035

ST MARY PARISH

BLOCK EI0036

TR 2003060028  
2,002.07 +/- ACS.  
MAY 2003

P.O.B.  
X=1,984,977.84  
Y=226,396.84

LA

US

BLOCK EI0038

BLOCK EI0034



**TRACT 35482 - Portion of Block 1, and Block 2, Atchafalaya Bay Area, Ship Shoal Area, Terrebonne Parish, Louisiana**

The beds and bottoms of all water bodies belonging to the State of Louisiana located in that portion of Block 1, and Block 2, Atchafalaya Bay Area, Ship Shoal Area, together with any present lands formed by accretion to the shoreline, located in Terrebonne Parish, Louisiana, and not presently under mineral lease on June 11, 2003, the geographical area of which is more fully described as follows: Beginning at a point on the South line of said Block 1 having Coordinates of X = 2,007,800.00 and Y = 211,361.22; thence West 7,800.00 feet on the South line of said Block 1 to its Southwest corner having Coordinates of X = 2,000,000.00 and Y = 211,361.22; thence North 17,248.65 feet on the West line of said Block 1 to a point having Coordinates of X = 2,000,000.00 and Y = 228,609.87; thence Southeasterly on a straight line to a point having Coordinates of X = 2,000,030 and Y = 228,573; thence Southeasterly on a straight line to a point having Coordinates of X = 2,004,384 and Y = 224,474; thence Southeasterly on a straight line to a point having Coordinates of X = 2,006,256 and Y = 222,432; thence Southeasterly on a straight line to a point having Coordinates of X = 2,006,991 and Y = 221,401; thence Southeasterly on a straight line to a point having Coordinates of X = 2,007,800.00 and Y = 219,909.29; thence South 8,548.07 feet to the point of beginning, containing approximately **2,397.75 acres**, all as more particularly outlined on a plat on file in the Office of Mineral Resources, Department of Natural Resources. All bearings, distances and coordinates are based on Louisiana Coordinate System of 1927, (North or South Zone).

NOTE: The above description of the Tract nominated for lease has been provided and corrected, where required, exclusively by the nomination party. Any mineral lease selected from this Tract and awarded by the Louisiana State Mineral Board shall be without warranty of any kind, either express, implied, or statutory, including, but not limited to, the implied warranties of merchantability and fitness for a particular purpose. Should the mineral lease awarded by the Louisiana State Mineral Board be subsequently modified, cancelled or abrogated due to the existence of conflicting leases, operating agreements, private claims or other future obligations or conditions which may affect all or any portion of the leased Tract, it shall not relieve the Lessee of the obligation to pay any bonus due thereon to the Louisiana State Mineral Board, nor shall the Louisiana State Mineral Board be obligated to refund any consideration paid by the Lessor prior to such modification, cancellation, or abrogation, including, but not limited to, bonuses, rentals and royalties.

NOTE: The State of Louisiana does hereby reserve, and this lease shall be subject to, the imprescriptible right of surface use in the nature of a servitude in favor of the Department of Natural Resources, including its Offices and Commissions, for the sole purpose of implementing, constructing, servicing and maintaining approved coastal zone management and/or restoration projects. Utilization of any and all rights derived

under this lease by the mineral lessee, its agents, successors or assigns, shall not interfere with nor hinder the reasonable surface use by the Department of Natural Resources, its Offices or Commissions, as herein above reserved.

NOTE: The Department of Wildlife and Fisheries has designated certain areas in the coastal waters of the State of Louisiana as Oyster Seed Bed Areas. The exact location of those Seed Bed Areas must be obtained from the Department of Wildlife and Fisheries and any work done under a mineral lease from the State of Louisiana may necessarily be conducted in conformity with the rules and regulations promulgated by the said Department of Wildlife and Fisheries for Oyster Seed Bed Areas.

Applicant: Harold J. Anderson, Inc.

| Bidder | Cash<br>Payment | Price /<br>Acre | Rental | Oil | Gas | Other |
|--------|-----------------|-----------------|--------|-----|-----|-------|
|        |                 |                 |        |     |     |       |
|        |                 |                 |        |     |     |       |
|        |                 |                 |        |     |     |       |
|        |                 |                 |        |     |     |       |

