

TRACT 35498 - Cameron Parish, Louisiana

All of the lands now or formerly constituting the beds and bottoms of all water bodies of every nature and description the title of which vests in the State of Louisiana, together with all islands arising therein and other lands formed by accretion or by reliction, where allowed by law, excepting tax adjudicated lands, and not presently under mineral lease on June 11, 2003, situated in Cameron Parish, Louisiana, and more particularly described as follows: Beginning at a point having Coordinates of X = 1,219,470.33 and Y = 458,500.00; thence West 8,999.82 feet to a point on the Texas-Louisiana boundary; thence along the Texas-Louisiana boundary the following courses: North 31 degrees 07 minutes 12 seconds East 2,669.12 feet and North 21 degrees 41 minutes 28 seconds East 1,403.99 feet to a point having Coordinates of X = 1,212,368.92 and Y = 462,089.57; thence East 7,101.41 feet to a point having Coordinates of X = 1,219,470.33 and Y = 462,089.57; thence South 3,589.57 feet to the point of beginning, containing approximately **656.37 acres**, , **LESS AND EXCEPT** that portion thereof, if any, located West of the boundary line between the States of Texas and Louisiana as determined by the report of the Special Master and adjudicated by the Supreme Court of the United States in litigation styled **Texas v. Louisiana, et al No. 36 Original**, or as otherwise approved by said court, all as more particularly outlined on a plat on file in the Office of Mineral Resources, Department of Natural Resources. All bearings, distances and coordinates are based on Louisiana Coordinate System of 1927, (North or South Zone), where applicable.

NOTE: The above description of the Tract nominated for lease has been provided and corrected, where required, exclusively by the nomination party. Any mineral lease selected from this Tract and awarded by the Louisiana State Mineral Board shall be without warranty of any kind, either express, implied, or statutory, including, but not limited to, the implied warranties of merchantability and fitness for a particular purpose. Should the mineral lease awarded by the Louisiana State Mineral Board be subsequently modified, cancelled or abrogated due to the existence of conflicting leases, operating agreements, private claims or other future obligations or conditions which may affect all or any portion of the leased Tract, it shall not relieve the Lessee of the obligation to pay any bonus due thereon to the Louisiana State Mineral Board, nor shall the Louisiana State Mineral Board be obligated to refund any consideration paid by the Lessor prior to such modification, cancellation, or abrogation, including, but not limited to, bonuses, rentals and royalties.

NOTE: The State of Louisiana does hereby reserve, and this lease shall be subject to, the imprescriptible right of surface use in the nature of a servitude in favor of the Department of Natural Resources, including its Offices and Commissions, for the sole purpose of implementing, constructing, servicing and maintaining approved coastal zone management and/or restoration projects. Utilization of any and all rights derived under this lease by the mineral lessee, its agents, successors or assigns, shall not interfere with nor hinder the reasonable surface use by the

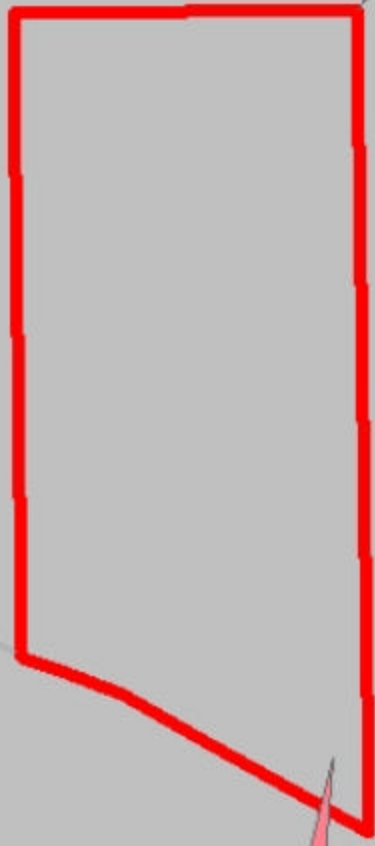
Department of Natural Resources, its Offices or Commissions, as herein above reserved.

Applicant: Cypress Energy Corporation

Bidder	Cash Payment	Price / Acre	Rental	Oil	Gas	Other

JEFFERSON COUNTY,
TEXAS

CAMERON PARISH



TR 2003060014
624.4 +/- ACS.
JUNE 2003

P.O.B.
X=1,219,470.33
Y=468,600.00

SABINE LAKE

TEXAS
LOUISIANA



TRACT 35499 - Cameron Parish, Louisiana

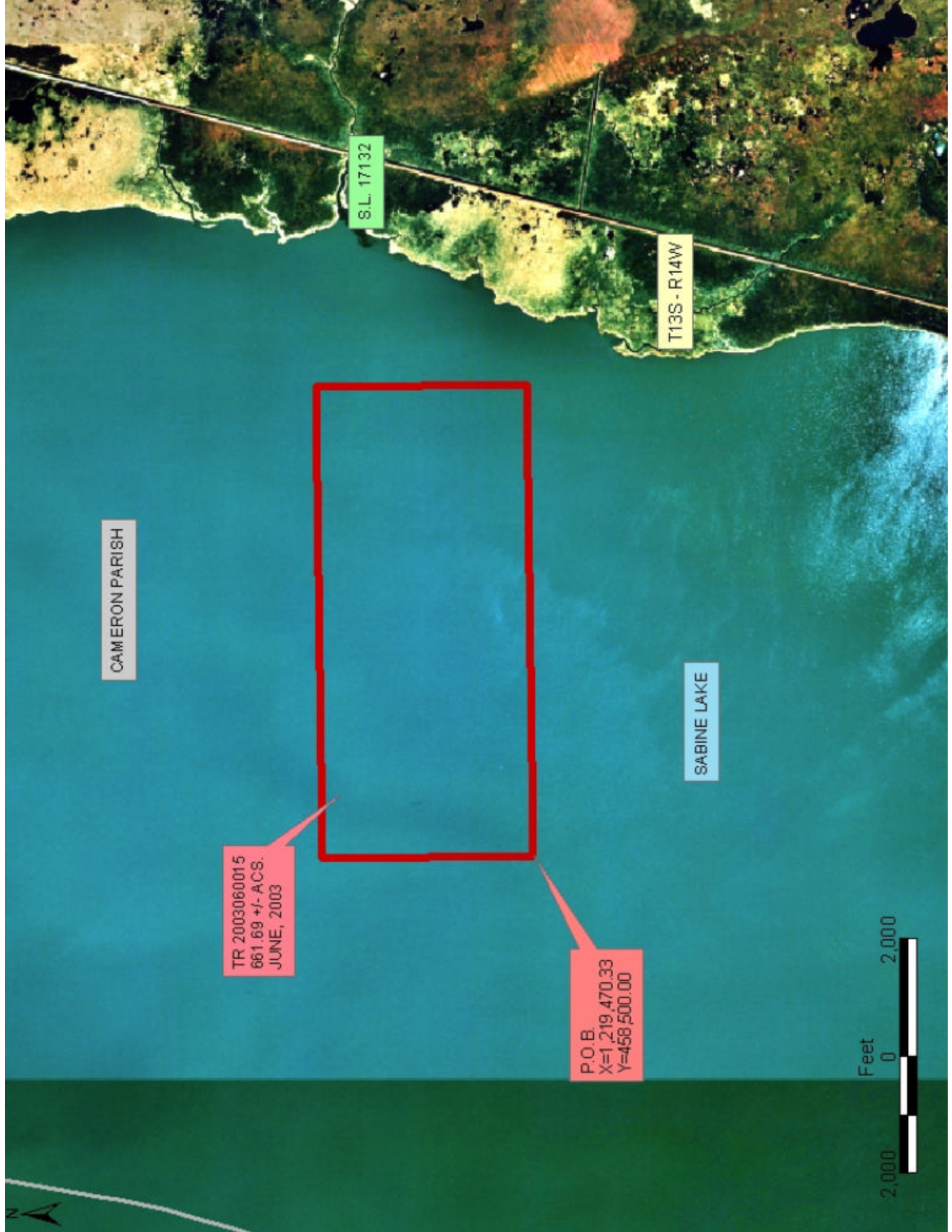
All of the lands now or formerly constituting the beds and bottoms of all water bodies of every nature and description the title of which vests in the State of Louisiana, together with all islands arising therein and other lands formed by accretion or by reliction, where allowed by law, excepting tax adjudicated lands, and not presently under mineral lease on June 11, 2003, situated in Cameron Parish, Louisiana, and more particularly described as follows: Beginning at a point having Coordinates of X = 1,219,470.33 and Y = 458,500.00; thence North 3,589.57 feet to a point having Coordinates of X = 1,219,470.33 and Y = 462,089.57; thence East 8,029.67 feet to a point on the West line of State Lease No. 17132 having Coordinates of X = 1,227,500.00 and Y = 462,089.57; thence South 3,589.57 feet along the West line of said State Lease No. 17132 to its Southwest corner having Coordinates of X = 1,227,500.00 and Y = 458,500.00; thence West 8,029.67 feet to the point of beginning, containing approximately **661.69 acres**, , all as more particularly outlined on a plat on file in the Office of Mineral Resources, Department of Natural Resources. All bearings, distances and coordinates are based on Louisiana Coordinate System of 1927, (North or South Zone), where applicable.

NOTE: The above description of the Tract nominated for lease has been provided and corrected, where required, exclusively by the nomination party. Any mineral lease selected from this Tract and awarded by the Louisiana State Mineral Board shall be without warranty of any kind, either express, implied, or statutory, including, but not limited to, the implied warranties of merchantability and fitness for a particular purpose. Should the mineral lease awarded by the Louisiana State Mineral Board be subsequently modified, cancelled or abrogated due to the existence of conflicting leases, operating agreements, private claims or other future obligations or conditions which may affect all or any portion of the leased Tract, it shall not relieve the Lessee of the obligation to pay any bonus due thereon to the Louisiana State Mineral Board, nor shall the Louisiana State Mineral Board be obligated to refund any consideration paid by the Lessor prior to such modification, cancellation, or abrogation, including, but not limited to, bonuses, rentals and royalties.

NOTE: The State of Louisiana does hereby reserve, and this lease shall be subject to, the imprescriptible right of surface use in the nature of a servitude in favor of the Department of Natural Resources, including its Offices and Commissions, for the sole purpose of implementing, constructing, servicing and maintaining approved coastal zone management and/or restoration projects. Utilization of any and all rights derived under this lease by the mineral lessee, its agents, successors or assigns, shall not interfere with nor hinder the reasonable surface use by the Department of Natural Resources, its Offices or Commissions, as herein above reserved.

Applicant: Cypress Energy Corporation

Bidder	Cash Payment	Price / Acre	Rental	Oil	Gas	Other



CAMERON PARISH

S.L. 17132

T13S - R14W

SABINE LAKE

TR 2003060015
661.69 +/- ACS.
JUNE, 2003

P.O.B.
X=1,219,470.33
Y=458,500.00



TRACT 35500 - Portion of Block 68, Chandeleur Sound Area, St. Bernard Parish, Louisiana

All of the lands now or formerly constituting the beds and bottoms of all water bodies of every nature and description the title of which vests in the State of Louisiana, together with all islands arising therein and other lands formed by accretion or by reliction, where allowed by law, excepting tax adjudicated lands, and not presently under mineral lease on June 11, 2003, situated in St. Bernard Parish, Louisiana, and more particularly described as follows: Beginning at the Northeast corner of Block 68, Chandeleur Sound Area, having Coordinates of X = 2,664,850.00 and Y = 396,080.00; thence South 4,550.00 feet along the East line of said Block 68 to the Northeast corner of State Lease No. 17122 having Coordinates of X = 2,664,850.00 and Y = 391,530.00; thence West 4,575.00 feet along the North line of said State Lease No. 17122 to its Northwest corner having Coordinates of X = 2,660,275.00 and Y = 391,530.00; thence South 5,400.00 feet along the West line of said State Lease No. 17122 to its Southwest corner having Coordinates of X = 2,660,275.00 and Y = 386,130.00; thence West 4,225.00 feet to a point having Coordinates of X = 2,656,050.00 and Y = 386,130.00; thence North 4,230.00 feet to the Southeast corner of State Lease No. 17455 having Coordinates of X = 2,656,050.00 and Y = 390,360.00; thence North 5,720.00 feet along the East line of said State Lease No. 17455 to its Northeast corner, said corner being a point on the North line of said Block 68 having Coordinates of X = 2,656,050.00 and Y = 396,080.00; thence East 8,800.00 feet along the North line of said Block 68 to the point of beginning, containing approximately **1,442.95 acres**, , all as more particularly outlined on a plat on file in the Office of Mineral Resources, Department of Natural Resources. All bearings, distances and coordinates are based on Louisiana Coordinate System of 1927, (North or South Zone), where applicable.

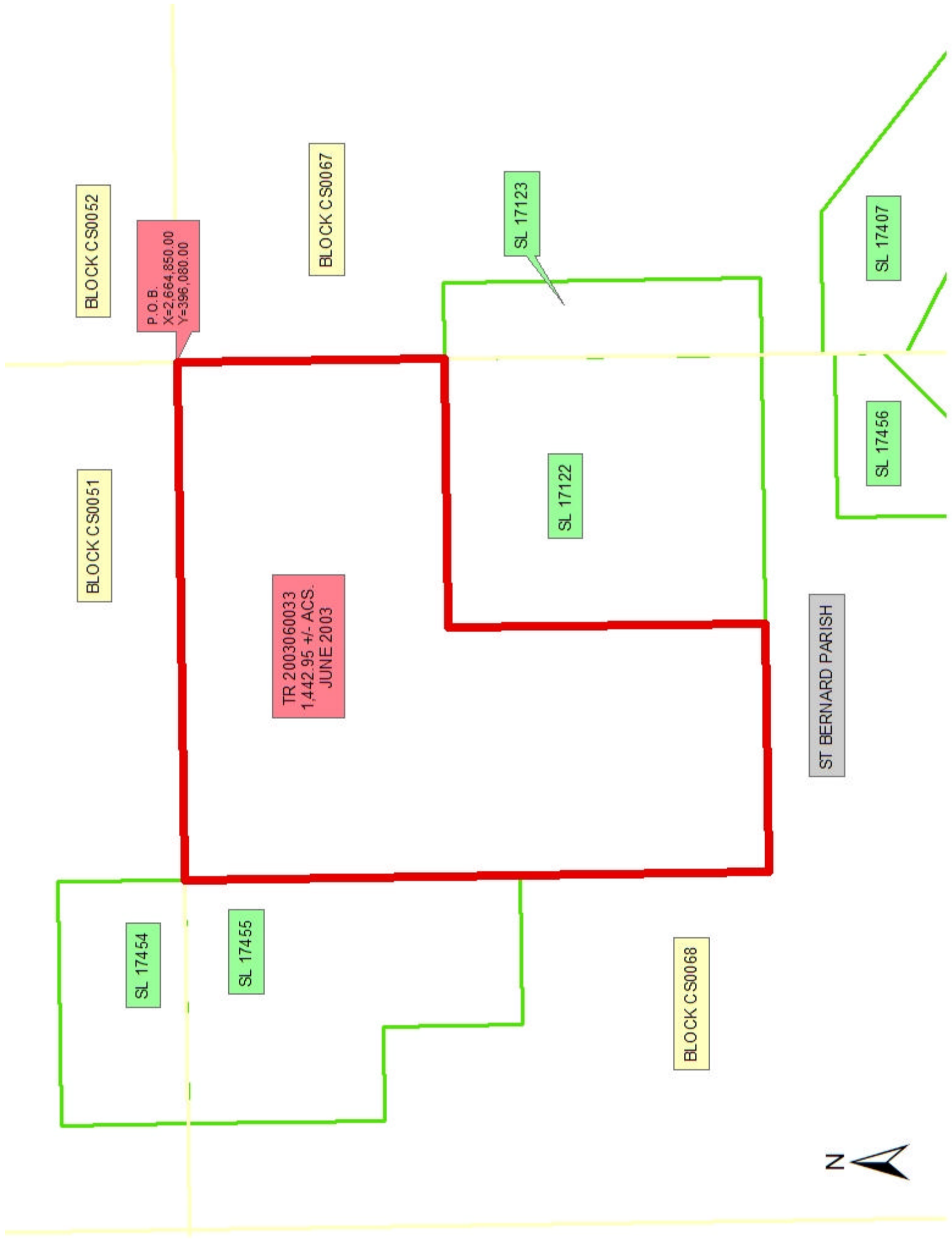
NOTE: The above description of the Tract nominated for lease has been provided and corrected, where required, exclusively by the nomination party. Any mineral lease selected from this Tract and awarded by the Louisiana State Mineral Board shall be without warranty of any kind, either express, implied, or statutory, including, but not limited to, the implied warranties of merchantability and fitness for a particular purpose. Should the mineral lease awarded by the Louisiana State Mineral Board be subsequently modified, cancelled or abrogated due to the existence of conflicting leases, operating agreements, private claims or other future obligations or conditions which may affect all or any portion of the leased Tract, it shall not relieve the Lessee of the obligation to pay any bonus due thereon to the Louisiana State Mineral Board, nor shall the Louisiana State Mineral Board be obligated to refund any consideration paid by the Lessor prior to such modification, cancellation, or abrogation, including, but not limited to, bonuses, rentals and royalties.

NOTE: The State of Louisiana does hereby reserve, and this lease shall be subject to, the imprescriptible right of surface use in the nature of a servitude in favor of the Department of Natural Resources, including its

Offices and Commissions, for the sole purpose of implementing, constructing, servicing and maintaining approved coastal zone management and/or restoration projects. Utilization of any and all rights derived under this lease by the mineral lessee, its agents, successors or assigns, shall not interfere with nor hinder the reasonable surface use by the Department of Natural Resources, its Offices or Commissions, as herein above reserved.

Applicant: Tiffany Exploration, Ltd.

Bidder	Cash Payment	Price / Acre	Rental	Oil	Gas	Other



BLOCK CS0052

BLOCK CS0067

BLOCK CS0051

P.O.B.
X=2,664,850.00
Y=396,080.00

TR 2003060033
1,442.95 +/- ACS.
JUNE 2003

SL 17123

SL 17122

SL 17407

SL 17456

ST BERNARD PARISH

BLOCK CS0068

SL 17454

SL 17455

TRACT 35501 - Portion of Block 67, Chandeleur Sound Area, St. Bernard Parish, Louisiana

All of the lands now or formerly constituting the beds and bottoms of all water bodies of every nature and description the title of which vests in the State of Louisiana, together with all islands arising therein and other lands formed by accretion or by reliction, where allowed by law, excepting tax adjudicated lands, and not presently under mineral lease on June 11, 2003, situated in St. Bernard Parish, Louisiana, and more particularly described as follows: Beginning at the Northwest corner of Block 67, Chandeleur Sound Area, having Coordinates of X = 2,664,850.00 and Y = 396,080.00; thence East 7,375.00 feet along the North line of said Block 67 to a point having Coordinates of X = 2,672,225.00 and Y = 396,080.00; thence South 9,950.00 feet to a point having Coordinates of X = 2,672,225.00 and Y = 386,130.00; thence West 6,075.00 feet to the Southeast corner of State Lease No. 17123 having Coordinates of X = 2,666,150.00 and Y = 386,130.00; thence North 5,400.00 feet along the East line of said State Lease No. 17123 to its Northeast corner having Coordinates of X = 2,666,150.00 and Y = 391,530.00; thence West 1,300.00 feet along the North line of said State Lease No. 17123 to its Northwest corner, said corner being a point on the West line of said Block 67 having Coordinates of X = 2,664,850.00 and Y = 391,530.00; thence North 4,550.00 feet along the West line of said Block 67 to the point of beginning, containing approximately **1,523.44 acres**, , all as more particularly outlined on a plat on file in the Office of Mineral Resources, Department of Natural Resources. All bearings, distances and coordinates are based on Louisiana Coordinate System of 1927, (North or South Zone), where applicable.

NOTE: The above description of the Tract nominated for lease has been provided and corrected, where required, exclusively by the nomination party. Any mineral lease selected from this Tract and awarded by the Louisiana State Mineral Board shall be without warranty of any kind, either express, implied, or statutory, including, but not limited to, the implied warranties of merchantability and fitness for a particular purpose. Should the mineral lease awarded by the Louisiana State Mineral Board be subsequently modified, cancelled or abrogated due to the existence of conflicting leases, operating agreements, private claims or other future obligations or conditions which may affect all or any portion of the leased Tract, it shall not relieve the Lessee of the obligation to pay any bonus due thereon to the Louisiana State Mineral Board, nor shall the Louisiana State Mineral Board be obligated to refund any consideration paid by the Lessor prior to such modification, cancellation, or abrogation, including, but not limited to, bonuses, rentals and royalties.

NOTE: The State of Louisiana does hereby reserve, and this lease shall be subject to, the imprescriptible right of surface use in the nature of a servitude in favor of the Department of Natural Resources, including its Offices and Commissions, for the sole purpose of implementing, constructing, servicing and maintaining approved coastal zone management

and/or restoration projects. Utilization of any and all rights derived under this lease by the mineral lessee, its agents, successors or assigns, shall not interfere with nor hinder the reasonable surface use by the Department of Natural Resources, its Offices or Commissions, as herein above reserved.

Applicant: Tiffany Exploration, Ltd.

Bidder	Cash Payment	Price / Acre	Rental	Oil	Gas	Other

ST BERNARD PARISH

BLOCK CS0052

BLOCK CS0067

TR 2003060032
1,523.44 +/- ACS.
JUNE 2003

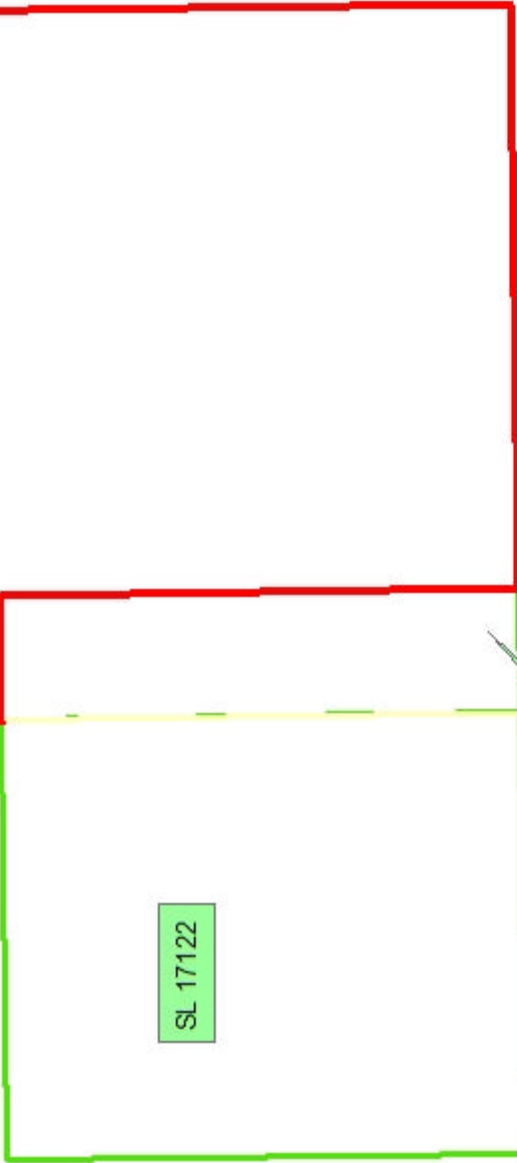


BLOCK CS0051

P.O.B.
X=2,664,850.00
Y=396,080.00

BLOCK CS0068

T15S - R19E



SL 17122

SL 17123

SL 17407

SL 17456

TRACT 35502 - Vermilion Parish, Louisiana

All of the lands now or formerly constituting the beds and bottoms of all water bodies of every nature and description the title of which vests in the State of Louisiana, together with all islands arising therein and other lands formed by accretion or by reliction, where allowed by law, excepting tax adjudicated lands, and not presently under mineral lease on June 11, 2003, situated in Vermilion Parish, Louisiana, and more particularly described as follows: Beginning at a point having Coordinates of X = 1,729,608.00 and Y = 388,053.00; thence North 5,847.00 feet to a point having Coordinates of X = 1,729,608.00 and Y = 393,900.00; thence East 2,792.00 feet to the Southwest corner of State Lease No. 16995 having Coordinates of X = 1,732,400.00 and Y = 393,900.00; thence East 3,800.00 feet on the South line of said State Lease No. 16995 to its Southeast corner having Coordinates of X = 1,736,200.00 and Y = 393,900.00; thence East 7,524.00 feet to a point having Coordinates of X = 1,743,724.00 and Y = 393,900.00; thence South 5,847.00 feet to a point having Coordinates of X = 1,743,724.00 and Y = 388,053.00; thence West 14,116.00 feet to the point of beginning, containing approximately **1,670 acres**, , all as more particularly outlined on a plat on file in the Office of Mineral Resources, Department of Natural Resources. All bearings, distances and coordinates are based on Louisiana Coordinate System of 1927, (North or South Zone), where applicable.

NOTE: The above description of the Tract nominated for lease has been provided and corrected, where required, exclusively by the nomination party. Any mineral lease selected from this Tract and awarded by the Louisiana State Mineral Board shall be without warranty of any kind, either express, implied, or statutory, including, but not limited to, the implied warranties of merchantability and fitness for a particular purpose. Should the mineral lease awarded by the Louisiana State Mineral Board be subsequently modified, cancelled or abrogated due to the existence of conflicting leases, operating agreements, private claims or other future obligations or conditions which may affect all or any portion of the leased Tract, it shall not relieve the Lessee of the obligation to pay any bonus due thereon to the Louisiana State Mineral Board, nor shall the Louisiana State Mineral Board be obligated to refund any consideration paid by the Lessor prior to such modification, cancellation, or abrogation, including, but not limited to, bonuses, rentals and royalties.

NOTE: The State of Louisiana does hereby reserve, and this lease shall be subject to, the imprescriptible right of surface use in the nature of a servitude in favor of the Department of Natural Resources, including its Offices and Commissions, for the sole purpose of implementing, constructing, servicing and maintaining approved coastal zone management and/or restoration projects. Utilization of any and all rights derived under this lease by the mineral lessee, its agents, successors or assigns, shall not interfere with nor hinder the reasonable surface use by the Department of Natural Resources, its Offices or Commissions, as herein above reserved.

NOTE: The Department of Wildlife and Fisheries has designated certain areas in the coastal waters of the State of Louisiana as Oyster Seed Bed Areas. The exact location of those Seed Bed Areas must be obtained from the Department of Wildlife and Fisheries and any work done under a mineral lease from the State of Louisiana may necessarily be conducted in conformity with the rules and regulations promulgated by the said Department of Wildlife and Fisheries for Oyster Seed Bed Areas.

Applicant: Suncoast Land Services, Inc.

Bidder	Cash Payment	Price / Acre	Rental	Oil	Gas	Other

TR 2003060005
1,670 +/- ACS.
JUNE, 2003

S.L. 17226

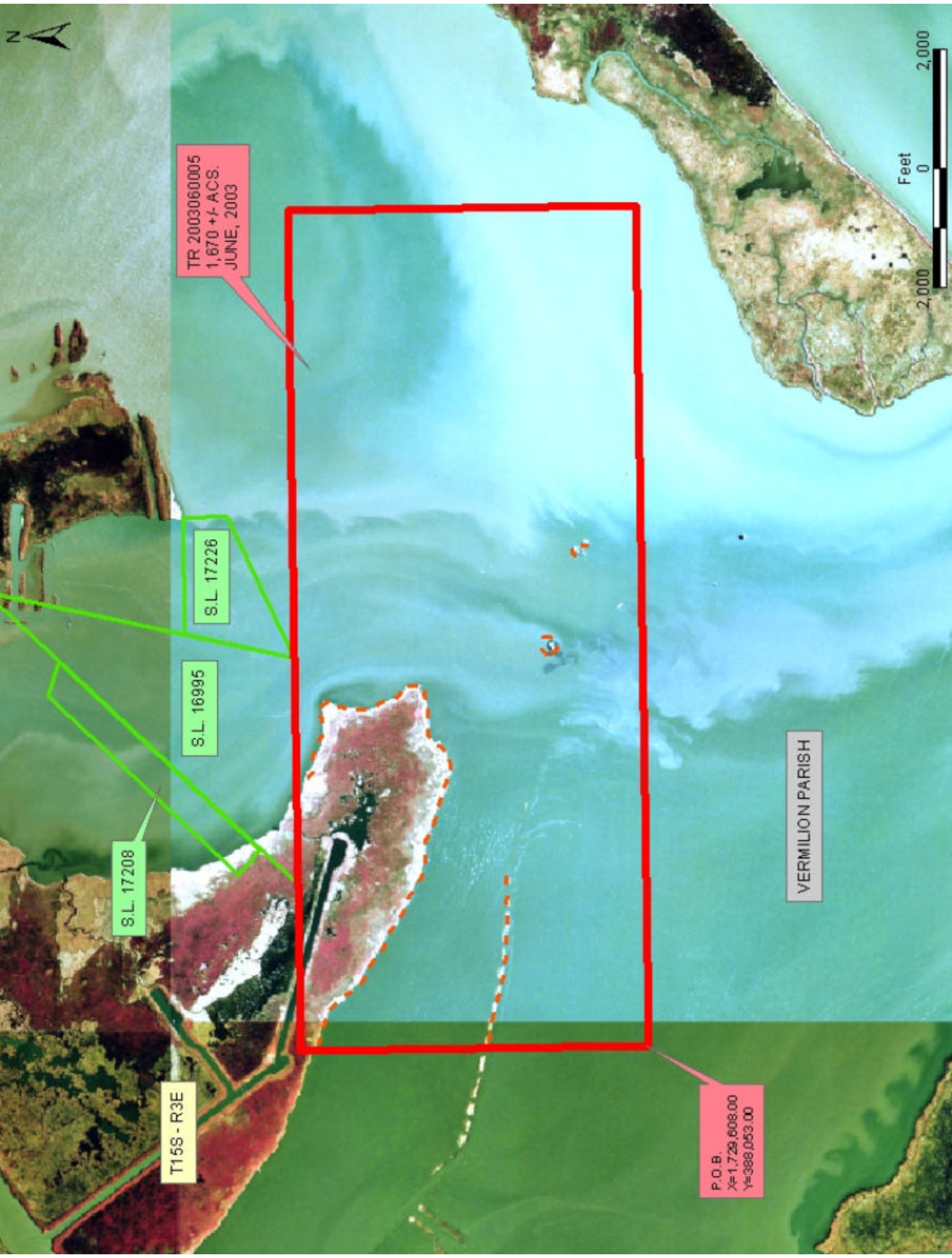
S.L. 16995

S.L. 17208

T15S - R3E

VERMILION PARISH

P.O.B.
X=1,729,608.00
Y=386,053.00



TRACT 35503 - Vermilion Parish, Louisiana

All of the lands now or formerly constituting the beds and bottoms of all water bodies of every nature and description the title of which vests in the State of Louisiana, together with all islands arising therein and other lands formed by accretion or by reliction, where allowed by law, excepting tax adjudicated lands, and not presently under mineral lease on June 11, 2003, situated in Vermilion Parish, Louisiana, and more particularly described as follows: Beginning at a point having Coordinates of X = 1,729,608.00 and Y = 388,053.00; thence East 14,116.00 feet to a point having Coordinates of X = 1,743,724.00 and Y = 388,053.00; thence South 5,989.00 feet to a point having Coordinates of X = 1,743,724.00 and Y = 382,064.00; thence West 14,116.00 feet to a point having Coordinates of X = 1,729,608.00 and Y = 382,064.00; thence North 5,989.00 feet to the point of beginning, containing approximately **1,670 acres**, , all as more particularly outlined on a plat on file in the Office of Mineral Resources, Department of Natural Resources. All bearings, distances and coordinates are based on Louisiana Coordinate System of 1927, (North or South Zone), where applicable.

NOTE: The above description of the Tract nominated for lease has been provided and corrected, where required, exclusively by the nomination party. Any mineral lease selected from this Tract and awarded by the Louisiana State Mineral Board shall be without warranty of any kind, either express, implied, or statutory, including, but not limited to, the implied warranties of merchantability and fitness for a particular purpose. Should the mineral lease awarded by the Louisiana State Mineral Board be subsequently modified, cancelled or abrogated due to the existence of conflicting leases, operating agreements, private claims or other future obligations or conditions which may affect all or any portion of the leased Tract, it shall not relieve the Lessee of the obligation to pay any bonus due thereon to the Louisiana State Mineral Board, nor shall the Louisiana State Mineral Board be obligated to refund any consideration paid by the Lessor prior to such modification, cancellation, or abrogation, including, but not limited to, bonuses, rentals and royalties.

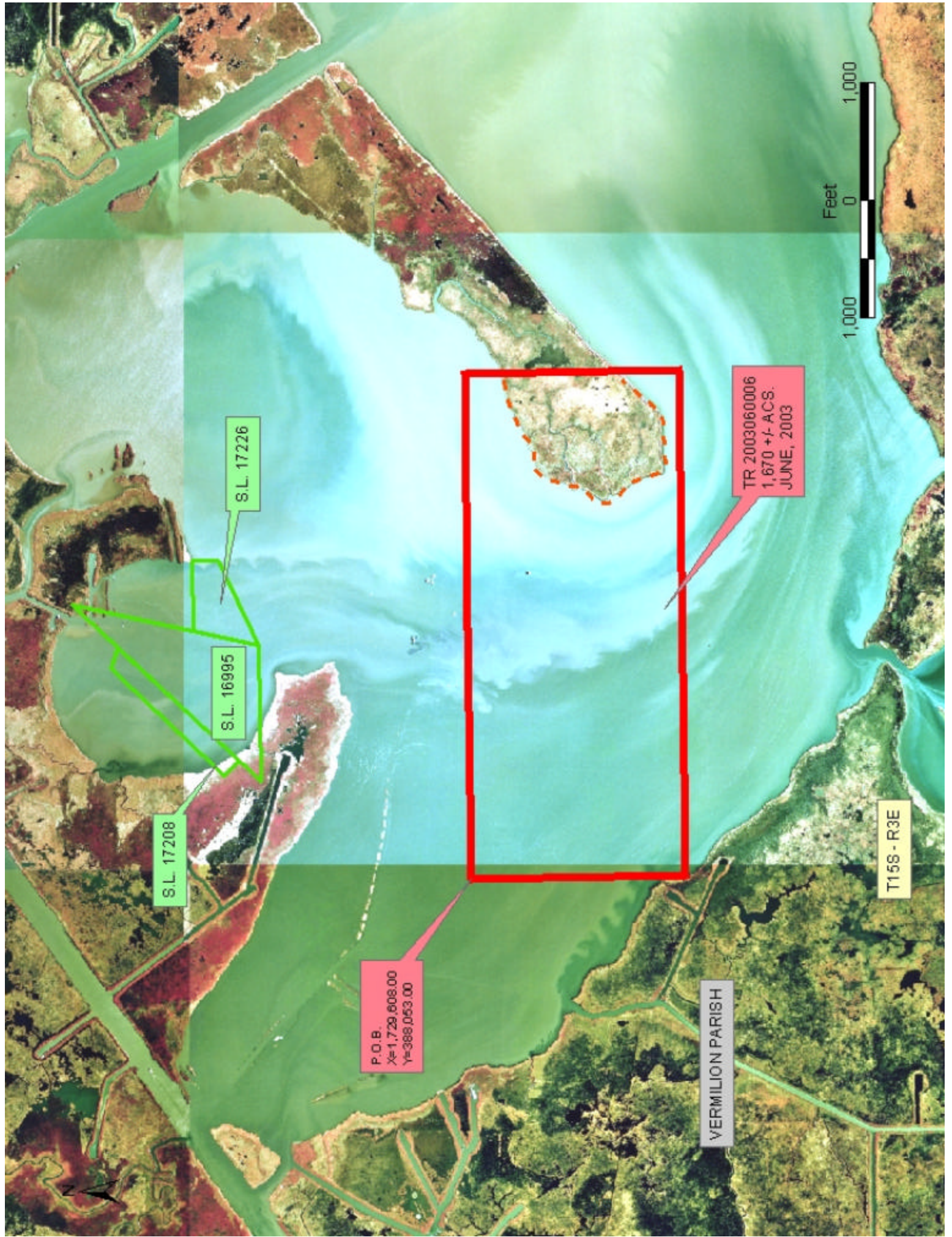
NOTE: The State of Louisiana does hereby reserve, and this lease shall be subject to, the imprescriptible right of surface use in the nature of a servitude in favor of the Department of Natural Resources, including its Offices and Commissions, for the sole purpose of implementing, constructing, servicing and maintaining approved coastal zone management and/or restoration projects. Utilization of any and all rights derived under this lease by the mineral lessee, its agents, successors or assigns, shall not interfere with nor hinder the reasonable surface use by the Department of Natural Resources, its Offices or Commissions, as herein above reserved.

NOTE: The Department of Wildlife and Fisheries has designated certain areas in the coastal waters of the State of Louisiana as Oyster Seed Bed Areas. The exact location of those Seed Bed Areas must be obtained from

the Department of Wildlife and Fisheries and any work done under a mineral lease from the State of Louisiana may necessarily be conducted in conformity with the rules and regulations promulgated by the said Department of Wildlife and Fisheries for Oyster Seed Bed Areas.

Applicant: Suncoast Land Services, Inc.

Bidder	Cash Payment	Price / Acre	Rental	Oil	Gas	Other



TRACT 35504 - Plaquemines Parish, Louisiana

All of the lands now or formerly constituting the beds and bottoms of all water bodies of every nature and description the title of which vests in the State of Louisiana, together with all islands arising therein and other lands formed by accretion or by reliction, where allowed by law, excepting tax adjudicated lands, and not presently under mineral lease on June 11, 2003, situated in Plaquemines Parish, Louisiana, and more particularly described as follows: Beginning at a point having Coordinates of X = 2,608,700.00 and Y = 235,800.00; thence West 16,200.00 feet to a point having Coordinates of X = 2,592,500.00 and Y = 235,800.00; thence North 10,000.00 feet to a point having Coordinates of X = 2,592,500.00 and Y = 245,800.00; thence East 16,200.00 feet to a point having Coordinates of X = 2,608,700.00 and Y = 245,800.00; thence South 10,000.00 feet to the point of beginning, containing approximately **95 acres**, , all as more particularly outlined on a plat on file in the Office of Mineral Resources, Department of Natural Resources. All bearings, distances and coordinates are based on Louisiana Coordinate System of 1927, (North or South Zone), where applicable.

NOTE: The above description of the Tract nominated for lease has been provided and corrected, where required, exclusively by the nomination party. Any mineral lease selected from this Tract and awarded by the Louisiana State Mineral Board shall be without warranty of any kind, either express, implied, or statutory, including, but not limited to, the implied warranties of merchantability and fitness for a particular purpose. Should the mineral lease awarded by the Louisiana State Mineral Board be subsequently modified, cancelled or abrogated due to the existence of conflicting leases, operating agreements, private claims or other future obligations or conditions which may affect all or any portion of the leased Tract, it shall not relieve the Lessee of the obligation to pay any bonus due thereon to the Louisiana State Mineral Board, nor shall the Louisiana State Mineral Board be obligated to refund any consideration paid by the Lessor prior to such modification, cancellation, or abrogation, including, but not limited to, bonuses, rentals and royalties.

NOTE: The State of Louisiana does hereby reserve, and this lease shall be subject to, the imprescriptible right of surface use in the nature of a servitude in favor of the Department of Natural Resources, including its Offices and Commissions, for the sole purpose of implementing, constructing, servicing and maintaining approved coastal zone management and/or restoration projects. Utilization of any and all rights derived under this lease by the mineral lessee, its agents, successors or assigns, shall not interfere with nor hinder the reasonable surface use by the Department of Natural Resources, its Offices or Commissions, as herein above reserved.

NOTE: The Department of Wildlife and Fisheries has designated certain areas in the coastal waters of the State of Louisiana as Oyster Seed Bed Areas. The exact location of those Seed Bed Areas must be obtained from

the Department of Wildlife and Fisheries and any work done under a mineral lease from the State of Louisiana may necessarily be conducted in conformity with the rules and regulations promulgated by the said Department of Wildlife and Fisheries for Oyster Seed Bed Areas.

Applicant: Ian Petroleum Group

Bidder	Cash Payment	Price / Acre	Rental	Oil	Gas	Other

PLAQUEMINES PARISH

YELLOW
COTTON
BAY

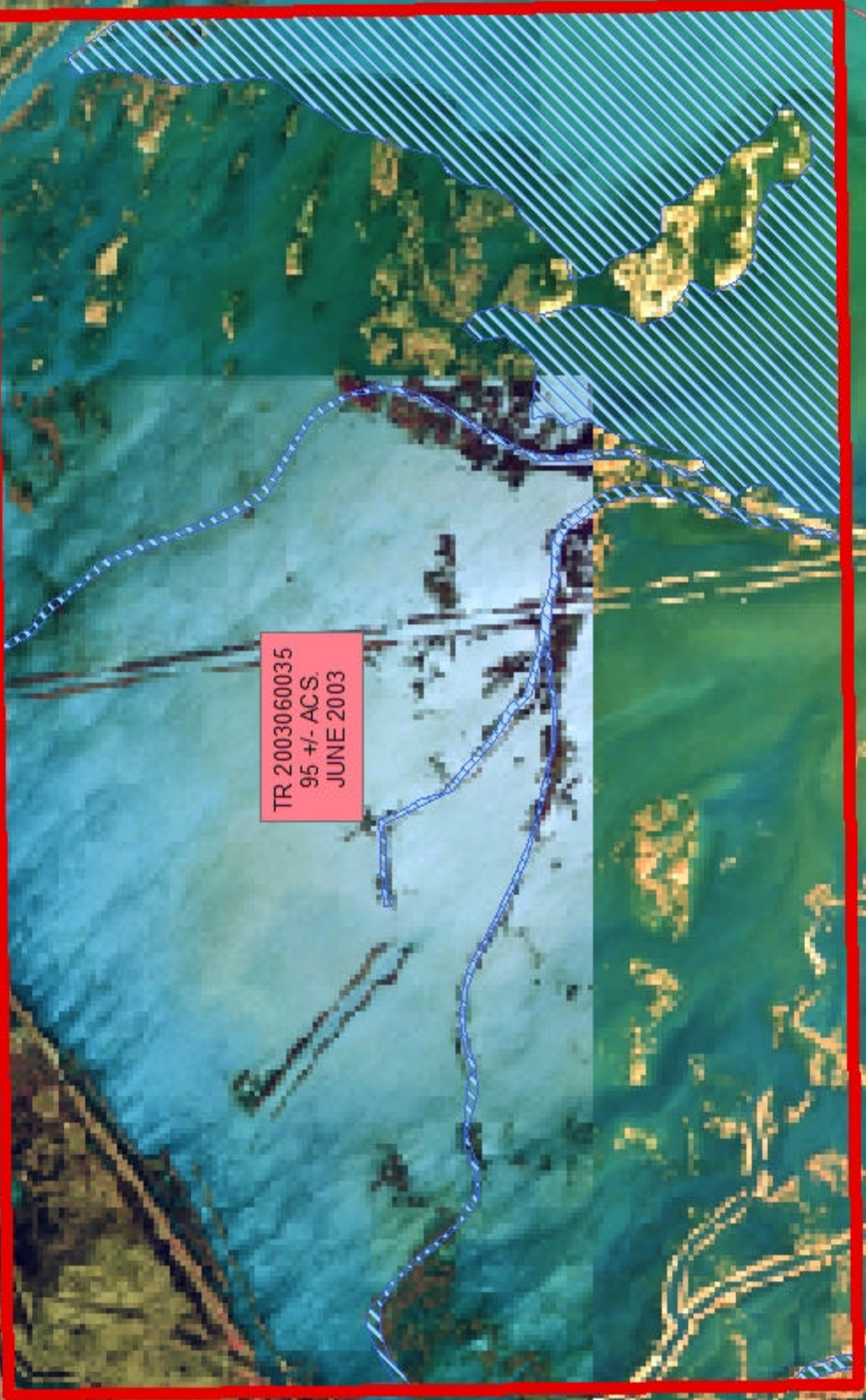
P.O.B.
X=2,608,700.00
Y=235,800.00

TR 2003060035
95 +/- ACS.
JUNE 2003

T20S - R30E

T21S - R30E

T20S - R29E



TRACT 35505 - Plaquemines Parish, Louisiana

All of the lands now or formerly constituting the beds and bottoms of all water bodies of every nature and description the title of which vests in the State of Louisiana, together with all islands arising therein and other lands formed by accretion or by reliction, where allowed by law, excepting tax adjudicated lands, and not presently under mineral lease on June 11, 2003, situated in Plaquemines Parish, Louisiana, and more particularly described as follows: Beginning at a point having Coordinates of X = 2,608,700.00 and Y = 235,800.00; thence South 10,000.00 feet to a point having Coordinates of X = 2,608,700.00 and Y = 225,800.00; thence West 16,200.00 feet to a point having Coordinates of X = 2,592,500.00 and Y = 225,800.00; thence North 10,000.00 feet to a point having Coordinates of X = 2,592,500.00 and Y = 235,800.00; thence East 16,200.00 feet to the point of beginning, containing approximately **306 acres**, , all as more particularly outlined on a plat on file in the Office of Mineral Resources, Department of Natural Resources. All bearings, distances and coordinates are based on Louisiana Coordinate System of 1927, (North or South Zone), where applicable.

NOTE: The above description of the Tract nominated for lease has been provided and corrected, where required, exclusively by the nomination party. Any mineral lease selected from this Tract and awarded by the Louisiana State Mineral Board shall be without warranty of any kind, either express, implied, or statutory, including, but not limited to, the implied warranties of merchantability and fitness for a particular purpose. Should the mineral lease awarded by the Louisiana State Mineral Board be subsequently modified, cancelled or abrogated due to the existence of conflicting leases, operating agreements, private claims or other future obligations or conditions which may affect all or any portion of the leased Tract, it shall not relieve the Lessee of the obligation to pay any bonus due thereon to the Louisiana State Mineral Board, nor shall the Louisiana State Mineral Board be obligated to refund any consideration paid by the Lessor prior to such modification, cancellation, or abrogation, including, but not limited to, bonuses, rentals and royalties.

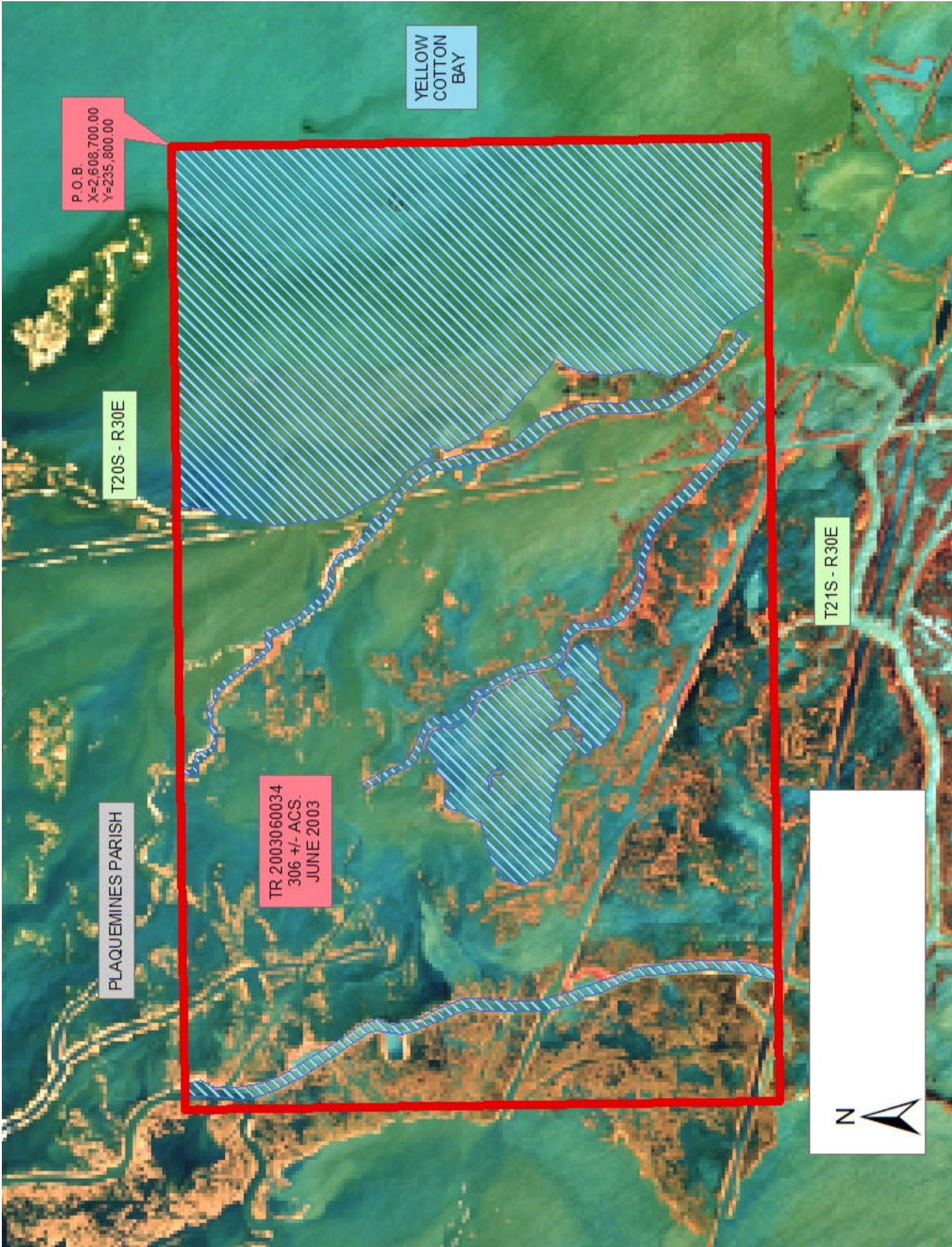
NOTE: The State of Louisiana does hereby reserve, and this lease shall be subject to, the imprescriptible right of surface use in the nature of a servitude in favor of the Department of Natural Resources, including its Offices and Commissions, for the sole purpose of implementing, constructing, servicing and maintaining approved coastal zone management and/or restoration projects. Utilization of any and all rights derived under this lease by the mineral lessee, its agents, successors or assigns, shall not interfere with nor hinder the reasonable surface use by the Department of Natural Resources, its Offices or Commissions, as herein above reserved.

NOTE: The Department of Wildlife and Fisheries has designated certain areas in the coastal waters of the State of Louisiana as Oyster Seed Bed Areas. The exact location of those Seed Bed Areas must be obtained from

the Department of Wildlife and Fisheries and any work done under a mineral lease from the State of Louisiana may necessarily be conducted in conformity with the rules and regulations promulgated by the said Department of Wildlife and Fisheries for Oyster Seed Bed Areas.

Applicant: Ian Petroleum Group

Bidder	Cash Payment	Price / Acre	Rental	Oil	Gas	Other



YELLOW
COTTON
BAY

P.O.B.
X=2,608,700.00
Y=235,800.00

T20S - R30E

PLAQUEMINES PARISH

TR 2003060034
306 +/- ACS.
JUNE 2003

T21S - R30E

