

TRACT 35490 - Calcasieu Parish, Louisiana

All of the lands now or formerly constituting the beds and bottoms of all water bodies of every nature and description the title of which vests in the State of Louisiana, together with all islands arising therein and other lands formed by accretion or by reliction, where allowed by law, excepting tax adjudicated lands, and not presently under mineral lease on June 11, 2003, situated in Calcasieu Parish, Louisiana, and more particularly described as follows: Beginning at a point having Coordinates of X = 1,247,237.44 and Y = 514,960.00; thence West 2,951.06 feet to a point having Coordinates of X = 1,244,286.38 and Y = 514,960.00; thence North approximately 5,009.00 feet to the Southwest corner of State Lease No. 1717, as amended; thence Northeasterly and Easterly to its most South Southeast corner; thence continue Easterly to a point on the West line of State Lease No. 16951 having Coordinates of X = 1,252,651.59 and Y = 520,513.47; thence South 8,161.74 feet along the West line of said State Lease No. 16951 to a point having Coordinates of X = 1,252,651.59 and Y = 512,351.73; thence West 5,414.15 feet to a point having Coordinates of X = 1,247,237.44 and Y = 512,351.73; thence North 2,608.27 feet to the point of beginning, containing approximately **162.77 acres**, , **LESS AND EXCEPT** that portion thereof, if any, located West of the boundary line between the States of Texas and Louisiana as determined by the report of the Special Master and adjudicated by the Supreme Court of the United States in litigation styled **Texas v. Louisiana, et al No. 36 Original**, or as otherwise approved by said court, all as more particularly outlined on a plat on file in the Office of Mineral Resources, Department of Natural Resources. All bearings, distances and coordinates are based on Louisiana Coordinate System of 1927, (North or South Zone), where applicable.

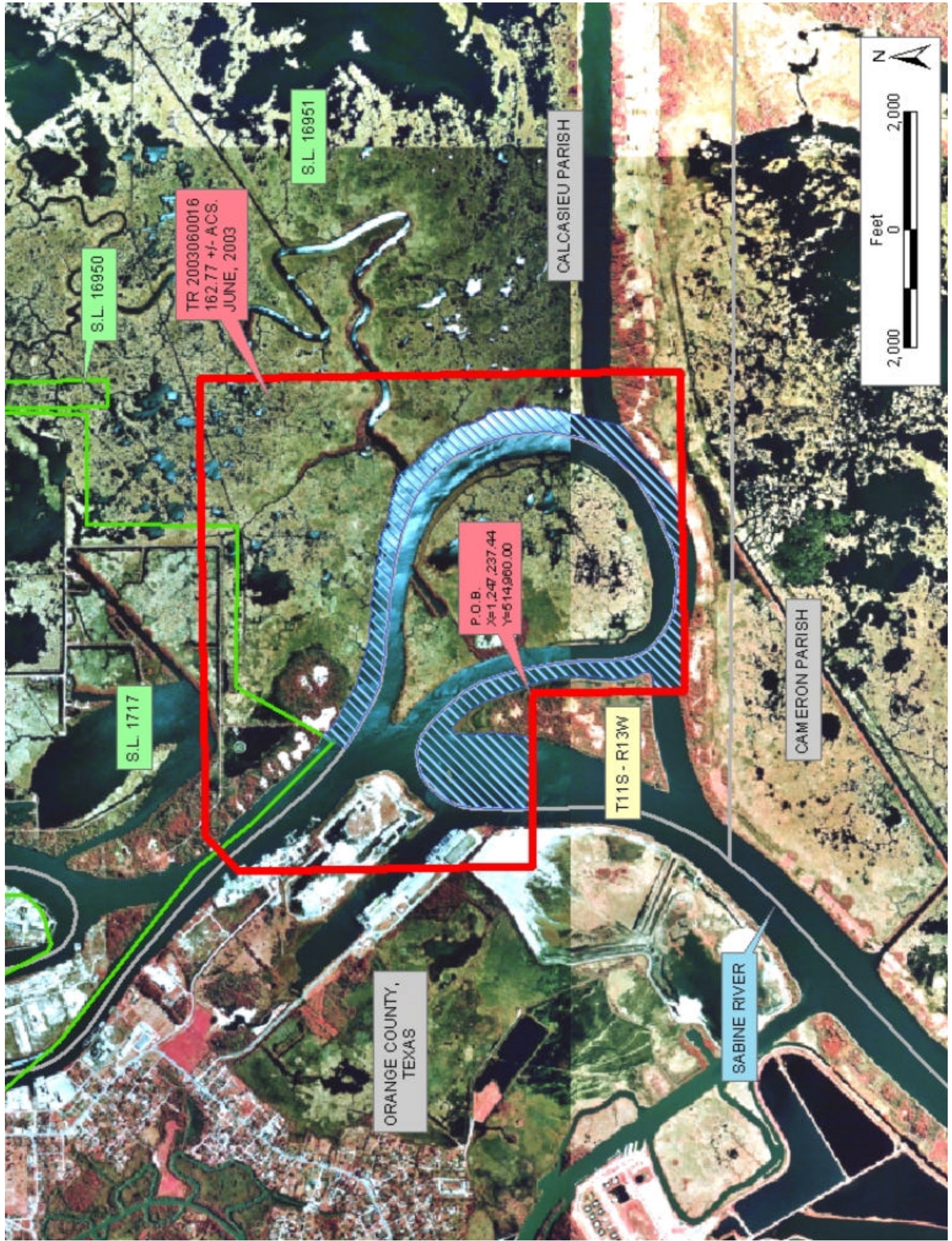
NOTE: The above description of the Tract nominated for lease has been provided and corrected, where required, exclusively by the nomination party. Any mineral lease selected from this Tract and awarded by the Louisiana State Mineral Board shall be without warranty of any kind, either express, implied, or statutory, including, but not limited to, the implied warranties of merchantability and fitness for a particular purpose. Should the mineral lease awarded by the Louisiana State Mineral Board be subsequently modified, cancelled or abrogated due to the existence of conflicting leases, operating agreements, private claims or other future obligations or conditions which may affect all or any portion of the leased Tract, it shall not relieve the Lessee of the obligation to pay any bonus due thereon to the Louisiana State Mineral Board, nor shall the Louisiana State Mineral Board be obligated to refund any consideration paid by the Lessor prior to such modification, cancellation, or abrogation, including, but not limited to, bonuses, rentals and royalties.

NOTE: The State of Louisiana does hereby reserve, and this lease shall be subject to, the imprescriptible right of surface use in the nature of a servitude in favor of the Department of Natural Resources, including its Offices and Commissions, for the sole purpose of implementing, constructing, servicing and maintaining approved coastal zone management

and/or restoration projects. Utilization of any and all rights derived under this lease by the mineral lessee, its agents, successors or assigns, shall not interfere with nor hinder the reasonable surface use by the Department of Natural Resources, its Offices or Commissions, as herein above reserved.

Applicant: Cypress Energy Corporation

Bidder	Cash Payment	Price / Acre	Rental	Oil	Gas	Other



TRACT 35491 - Cameron Parish, Louisiana

All of the lands now or formerly constituting the beds and bottoms of all water bodies of every nature and description the title of which vests in the State of Louisiana, together with all islands arising therein and other lands formed by accretion or by reliction, where allowed by law, excepting tax adjudicated lands, and not presently under mineral lease on June 11, 2003, situated in Cameron Parish, Louisiana, and more particularly described as follows: Beginning at a point having Coordinates of X = 1,226,200.99 and Y = 471,520.00; thence West 5,340.99 feet to a point on the East line of State Lease No. 17420 having Coordinates of X = 1,220,860.00 and Y = 471,520.00; thence North 6,480.00 feet along the East line of said State Lease No. 17420 to a point of intersection with the most South Southwest corner of State Lease No. 17701 having Coordinates of X = 1,220,860.00 and Y = 478,000.00; thence East 3,140.00 feet along the South line of said State Lease No. 17701 to its Southeast corner having Coordinates of X = 1,224,000.00 and Y = 478,000.00; thence continue East 2,200.99 feet to a point having Coordinates of X = 1,226,200.99 and Y = 478,000.00; thence South 6,480.00 feet to the point of beginning, containing approximately **794.53 acres**, , all as more particularly outlined on a plat on file in the Office of Mineral Resources, Department of Natural Resources. All bearings, distances and coordinates are based on Louisiana Coordinate System of 1927, (North or South Zone), where applicable.

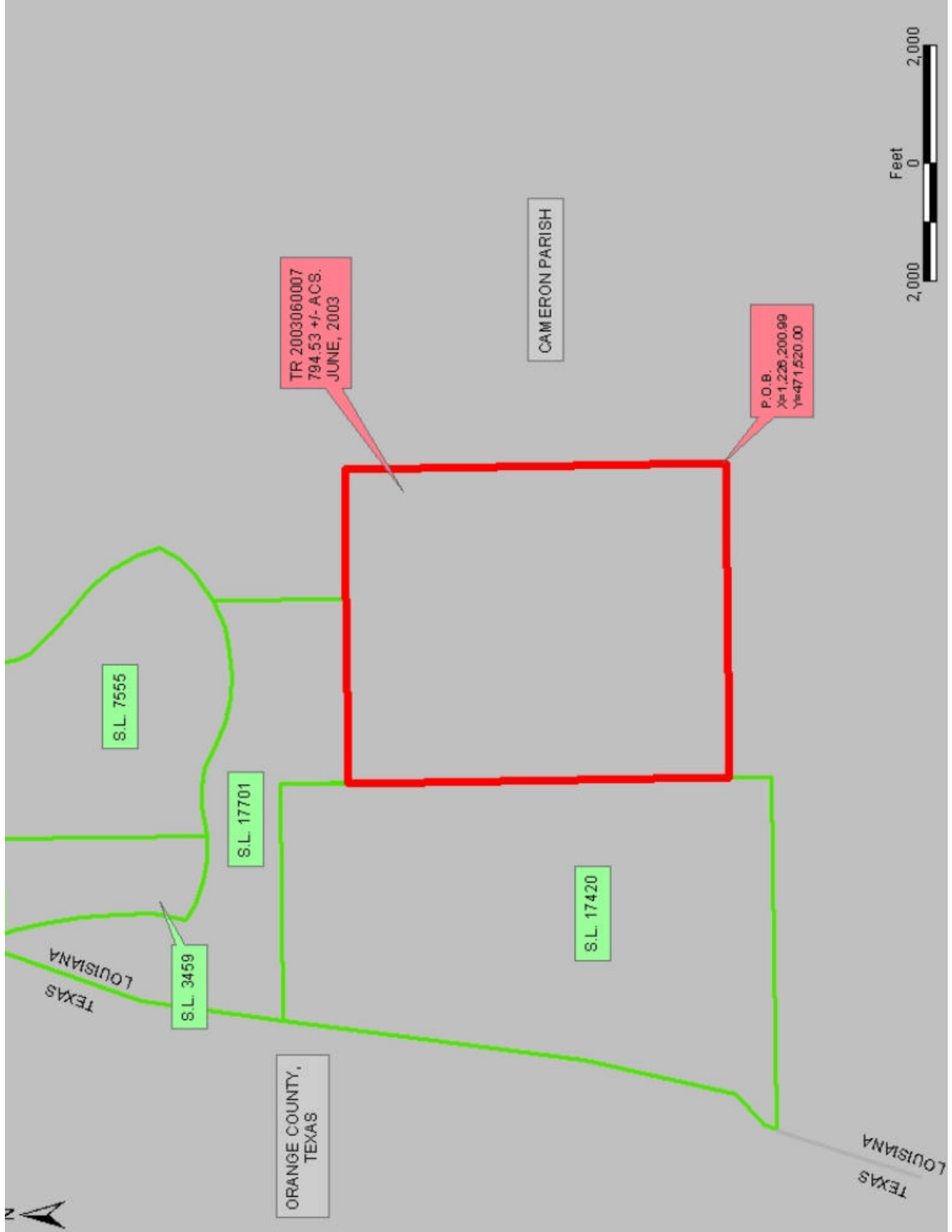
NOTE: The above description of the Tract nominated for lease has been provided and corrected, where required, exclusively by the nomination party. Any mineral lease selected from this Tract and awarded by the Louisiana State Mineral Board shall be without warranty of any kind, either express, implied, or statutory, including, but not limited to, the implied warranties of merchantability and fitness for a particular purpose. Should the mineral lease awarded by the Louisiana State Mineral Board be subsequently modified, cancelled or abrogated due to the existence of conflicting leases, operating agreements, private claims or other future obligations or conditions which may affect all or any portion of the leased Tract, it shall not relieve the Lessee of the obligation to pay any bonus due thereon to the Louisiana State Mineral Board, nor shall the Louisiana State Mineral Board be obligated to refund any consideration paid by the Lessor prior to such modification, cancellation, or abrogation, including, but not limited to, bonuses, rentals and royalties.

NOTE: The State of Louisiana does hereby reserve, and this lease shall be subject to, the imprescriptible right of surface use in the nature of a servitude in favor of the Department of Natural Resources, including its Offices and Commissions, for the sole purpose of implementing, constructing, servicing and maintaining approved coastal zone management and/or restoration projects. Utilization of any and all rights derived under this lease by the mineral lessee, its agents, successors or assigns, shall not interfere with nor hinder the reasonable surface use by the

Department of Natural Resources, its Offices or Commissions, as herein above reserved.

Applicant: Cypress Energy Corporation

Bidder	Cash Payment	Price / Acre	Rental	Oil	Gas	Other



TR 2003060007
794.53 +/- ACS.
JUNE, 2003

CAMERON PARISH

P.O.B.
X=1,226,200.99
Y=471,520.00

S.L. 7555

S.L. 17701

S.L. 3459

S.L. 17420

ORANGE COUNTY,
TEXAS



TRACT 35492 - Cameron Parish, Louisiana

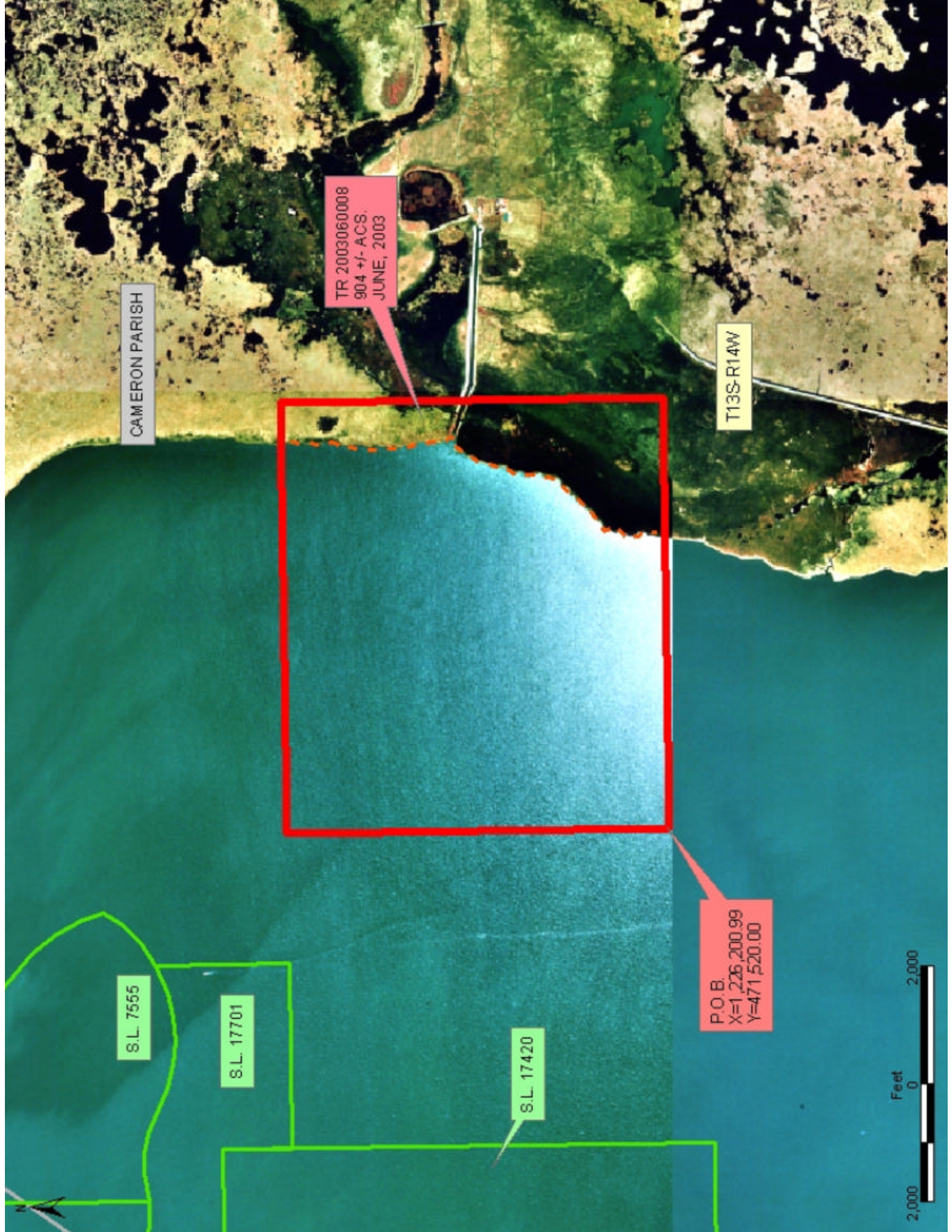
All of the lands now or formerly constituting the beds and bottoms of all water bodies of every nature and description the title of which vests in the State of Louisiana, together with all islands arising therein and other lands formed by accretion or by reliction, where allowed by law, excepting tax adjudicated lands, and not presently under mineral lease on June 11, 2003, situated in Cameron Parish, Louisiana, and more particularly described as follows: Beginning at a point having Coordinates of X = 1,226,200.99 and Y = 471,520.00; thence North 6,480.00 feet to a point having Coordinates of X = 1,226,200.99 and Y = 478,000.00; thence East 7,326.60 feet to a point having Coordinates of X = 1,233,527.59 and Y = 478,000.00; thence South 6,480.00 feet to a point having Coordinates of X = 1,233,527.59 and Y = 471,520.00; thence West 7,326.60 feet to the point of beginning, containing approximately **904.38 acres**, , all as more particularly outlined on a plat on file in the Office of Mineral Resources, Department of Natural Resources. All bearings, distances and coordinates are based on Louisiana Coordinate System of 1927, (North or South Zone), where applicable.

NOTE: The above description of the Tract nominated for lease has been provided and corrected, where required, exclusively by the nomination party. Any mineral lease selected from this Tract and awarded by the Louisiana State Mineral Board shall be without warranty of any kind, either express, implied, or statutory, including, but not limited to, the implied warranties of merchantability and fitness for a particular purpose. Should the mineral lease awarded by the Louisiana State Mineral Board be subsequently modified, cancelled or abrogated due to the existence of conflicting leases, operating agreements, private claims or other future obligations or conditions which may affect all or any portion of the leased Tract, it shall not relieve the Lessee of the obligation to pay any bonus due thereon to the Louisiana State Mineral Board, nor shall the Louisiana State Mineral Board be obligated to refund any consideration paid by the Lessor prior to such modification, cancellation, or abrogation, including, but not limited to, bonuses, rentals and royalties.

NOTE: The State of Louisiana does hereby reserve, and this lease shall be subject to, the imprescriptible right of surface use in the nature of a servitude in favor of the Department of Natural Resources, including its Offices and Commissions, for the sole purpose of implementing, constructing, servicing and maintaining approved coastal zone management and/or restoration projects. Utilization of any and all rights derived under this lease by the mineral lessee, its agents, successors or assigns, shall not interfere with nor hinder the reasonable surface use by the Department of Natural Resources, its Offices or Commissions, as herein above reserved.

Applicant: Cypress Energy Corporation

Bidder	Cash Payment	Price / Acre	Rental	Oil	Gas	Other



CAMERON PARISH

TR 2003060008
904 +/- ACS.
JUNE, 2003

T13S-R14W

S.L. 7555

S.L. 17701

S.L. 17420

P.O.B.
X=1 226 200.99
Y=471 520.00



TRACT 35493 - Cameron Parish, Louisiana

All of the lands now or formerly constituting the beds and bottoms of all water bodies of every nature and description the title of which vests in the State of Louisiana, together with all islands arising therein and other lands formed by accretion or by reliction, where allowed by law, excepting tax adjudicated lands, and not presently under mineral lease on June 11, 2003, situated in Cameron Parish, Louisiana, and more particularly described as follows: Beginning at a point having Coordinates of X = 1,219,994.80 and Y = 466,894.24; thence North 3,925.76 feet to a point on the South line of State Lease No. 17420 having Coordinates of X = 1,219,994.80 and Y = 470,820.00; thence East 865.20 feet and North 700.00 feet along the South and East boundaries of said State Lease No. 17420 to a point on its East line having Coordinates of X = 1,220,860.00 and Y = 471,520.00; thence East 5,340.99 feet to a point having Coordinates of X = 1,226,200.99 and Y = 471,520.00; thence South 4,625.76 feet to a point having Coordinates of X = 1,226,200.99 and Y = 466,894.24; thence West 6,206.19 feet to the point of beginning, containing approximately **645.15 acres**, , all as more particularly outlined on a plat on file in the Office of Mineral Resources, Department of Natural Resources. All bearings, distances and coordinates are based on Louisiana Coordinate System of 1927, (North or South Zone), where applicable.

NOTE: The above description of the Tract nominated for lease has been provided and corrected, where required, exclusively by the nomination party. Any mineral lease selected from this Tract and awarded by the Louisiana State Mineral Board shall be without warranty of any kind, either express, implied, or statutory, including, but not limited to, the implied warranties of merchantability and fitness for a particular purpose. Should the mineral lease awarded by the Louisiana State Mineral Board be subsequently modified, cancelled or abrogated due to the existence of conflicting leases, operating agreements, private claims or other future obligations or conditions which may affect all or any portion of the leased Tract, it shall not relieve the Lessee of the obligation to pay any bonus due thereon to the Louisiana State Mineral Board, nor shall the Louisiana State Mineral Board be obligated to refund any consideration paid by the Lessor prior to such modification, cancellation, or abrogation, including, but not limited to, bonuses, rentals and royalties.

NOTE: The State of Louisiana does hereby reserve, and this lease shall be subject to, the imprescriptible right of surface use in the nature of a servitude in favor of the Department of Natural Resources, including its Offices and Commissions, for the sole purpose of implementing, constructing, servicing and maintaining approved coastal zone management and/or restoration projects. Utilization of any and all rights derived under this lease by the mineral lessee, its agents, successors or assigns, shall not interfere with nor hinder the reasonable surface use by the Department of Natural Resources, its Offices or Commissions, as herein above reserved.

Applicant: Cypress Energy Corporation

Bidder	Cash Payment	Price / Acre	Rental	Oil	Gas	Other



CAMERON PARISH

S.L. 17420

TR 2003060010
645.15 +/- ACS.
JUNE, 2003

P.O.B.
X=1,219,994.80
Y=466,894.24

SABINE LAKE

S.L. 17132



TRACT 35494 - Cameron Parish, Louisiana

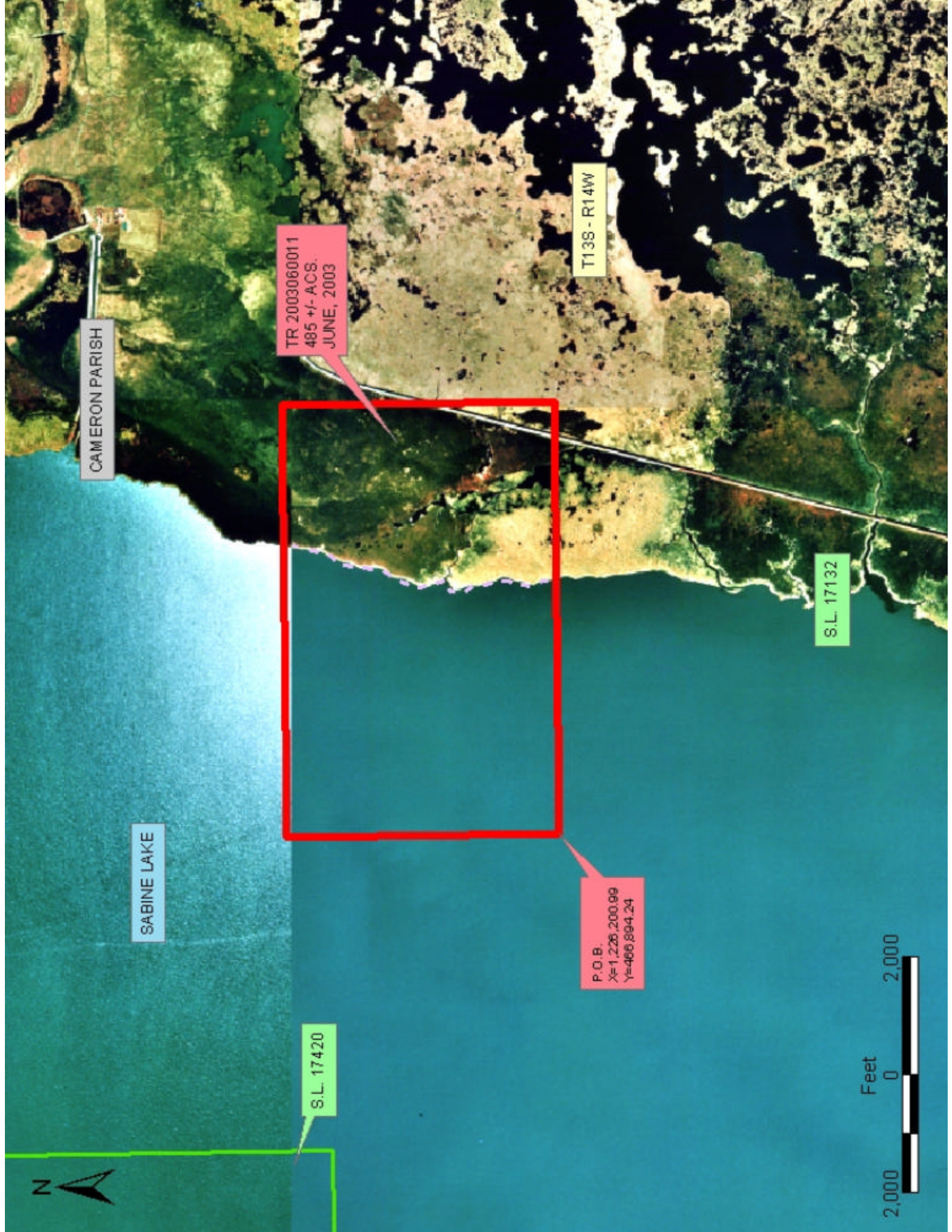
All of the lands now or formerly constituting the beds and bottoms of all water bodies of every nature and description the title of which vests in the State of Louisiana, together with all islands arising therein and other lands formed by accretion or by reliction, where allowed by law, excepting tax adjudicated lands, and not presently under mineral lease on June 11, 2003, situated in Cameron Parish, Louisiana, and more particularly described as follows: Beginning at a point having Coordinates of X = 1,226,200.99 and Y = 466,894.24; thence North 4,625.76 feet to a point having Coordinates of X = 1,226,200.99 and Y = 471,520.00; thence East 7,326.60 feet to a point having Coordinates of X = 1,233,527.59 and Y = 471,520.00; thence South 4,625.76 feet to a point having Coordinates of X = 1,233,527.59 and Y = 466,894.24; thence West 7,326.60 feet to the point of beginning, containing approximately **485.40 acres**, , all as more particularly outlined on a plat on file in the Office of Mineral Resources, Department of Natural Resources. All bearings, distances and coordinates are based on Louisiana Coordinate System of 1927, (North or South Zone), where applicable.

NOTE: The above description of the Tract nominated for lease has been provided and corrected, where required, exclusively by the nomination party. Any mineral lease selected from this Tract and awarded by the Louisiana State Mineral Board shall be without warranty of any kind, either express, implied, or statutory, including, but not limited to, the implied warranties of merchantability and fitness for a particular purpose. Should the mineral lease awarded by the Louisiana State Mineral Board be subsequently modified, cancelled or abrogated due to the existence of conflicting leases, operating agreements, private claims or other future obligations or conditions which may affect all or any portion of the leased Tract, it shall not relieve the Lessee of the obligation to pay any bonus due thereon to the Louisiana State Mineral Board, nor shall the Louisiana State Mineral Board be obligated to refund any consideration paid by the Lessor prior to such modification, cancellation, or abrogation, including, but not limited to, bonuses, rentals and royalties.

NOTE: The State of Louisiana does hereby reserve, and this lease shall be subject to, the imprescriptible right of surface use in the nature of a servitude in favor of the Department of Natural Resources, including its Offices and Commissions, for the sole purpose of implementing, constructing, servicing and maintaining approved coastal zone management and/or restoration projects. Utilization of any and all rights derived under this lease by the mineral lessee, its agents, successors or assigns, shall not interfere with nor hinder the reasonable surface use by the Department of Natural Resources, its Offices or Commissions, as herein above reserved.

Applicant: Cypress Energy Corporation

Bidder	Cash Payment	Price / Acre	Rental	Oil	Gas	Other



CAMERON PARISH

SABINE LAKE

TR 2003060011
485 +/- ACS.
JUNE, 2003

T138 - R14W

S.L. 17132

S.L. 17420

P.O.B.
X=1,226,200.99
Y=466,894.24



TRACT 35495 - Cameron Parish, Louisiana

All of the lands now or formerly constituting the beds and bottoms of all water bodies of every nature and description the title of which vests in the State of Louisiana, together with all islands arising therein and other lands formed by accretion or by reliction, where allowed by law, excepting tax adjudicated lands, and not presently under mineral lease on June 11, 2003, situated in Cameron Parish, Louisiana, and more particularly described as follows: Beginning at a point having Coordinates of X = 1,219,994.80 and Y = 466,894.24; thence West 6,196.93 feet to a point on the Texas-Louisiana boundary having Coordinates of X = 1,213,797.87 and Y = 466,894.24; thence on the said Texas-Louisiana boundary the following courses: North 14 degrees 23 minutes 58 seconds East 2,019.19 feet to a point having Coordinates of X = 1,214,300.00 and Y = 468,850.00, North 11 degrees 52 minutes 43 seconds East 1,481.73 feet to a point having Coordinates of X = 1,214,605.00 and Y = 470,300.00 and North 25 degrees 46 minutes 49 seconds East 577.48 feet to the Southwest corner of State Lease No. 17420 having Coordinates of X = 1,214,856.16 and Y = 470,820.00; thence East 5,138.64 feet along the South line of said State Lease No. 17420 to a point having Coordinates of X = 1,219,994.80 and Y = 470,820.00; thence South 3,925.76 feet to the point of beginning, containing approximately **514.29 acres**, , **LESS AND EXCEPT** that portion thereof, if any, located West of the boundary line between the States of Texas and Louisiana as determined by the report of the Special Master and adjudicated by the Supreme Court of the United States in litigation styled **Texas v. Louisiana, et al No. 36 Original**, or as otherwise approved by said court, all as more particularly outlined on a plat on file in the Office of Mineral Resources, Department of Natural Resources. All bearings, distances and coordinates are based on Louisiana Coordinate System of 1927, (North or South Zone), where applicable.

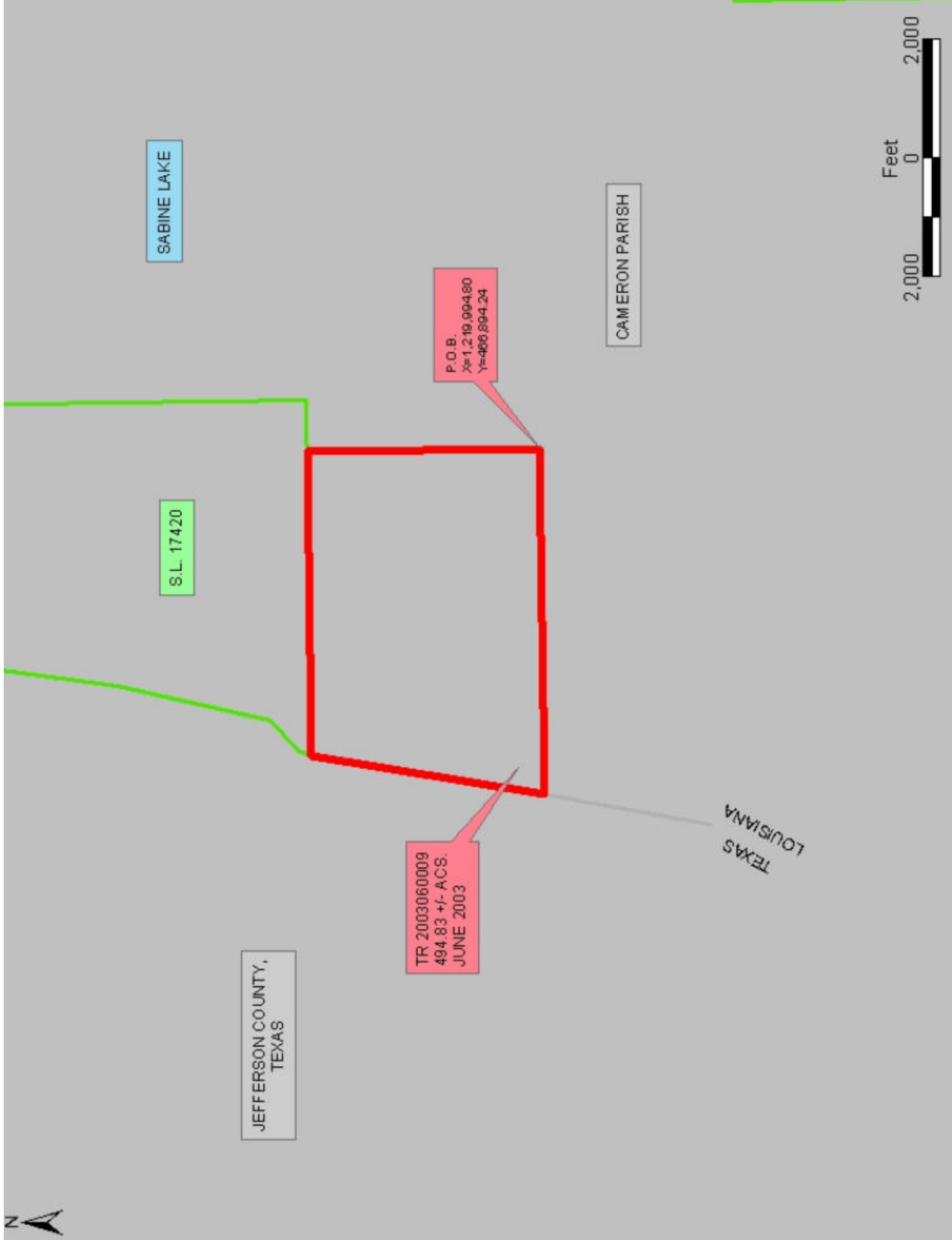
NOTE: The above description of the Tract nominated for lease has been provided and corrected, where required, exclusively by the nomination party. Any mineral lease selected from this Tract and awarded by the Louisiana State Mineral Board shall be without warranty of any kind, either express, implied, or statutory, including, but not limited to, the implied warranties of merchantability and fitness for a particular purpose. Should the mineral lease awarded by the Louisiana State Mineral Board be subsequently modified, cancelled or abrogated due to the existence of conflicting leases, operating agreements, private claims or other future obligations or conditions which may affect all or any portion of the leased Tract, it shall not relieve the Lessee of the obligation to pay any bonus due thereon to the Louisiana State Mineral Board, nor shall the Louisiana State Mineral Board be obligated to refund any consideration paid by the Lessor prior to such modification, cancellation, or abrogation, including, but not limited to, bonuses, rentals and royalties.

NOTE: The State of Louisiana does hereby reserve, and this lease shall be subject to, the imprescriptible right of surface use in the nature of a servitude in favor of the Department of Natural Resources, including its

Offices and Commissions, for the sole purpose of implementing, constructing, servicing and maintaining approved coastal zone management and/or restoration projects. Utilization of any and all rights derived under this lease by the mineral lessee, its agents, successors or assigns, shall not interfere with nor hinder the reasonable surface use by the Department of Natural Resources, its Offices or Commissions, as herein above reserved.

Applicant: Cypress Energy Corporation

Bidder	Cash Payment	Price / Acre	Rental	Oil	Gas	Other



TRACT 35496 - Cameron Parish, Louisiana

All of the lands now or formerly constituting the beds and bottoms of all water bodies of every nature and description the title of which vests in the State of Louisiana, together with all islands arising therein and other lands formed by accretion or by reliction, where allowed by law, excepting tax adjudicated lands, and not presently under mineral lease on June 11, 2003, situated in Cameron Parish, Louisiana, and more particularly described as follows: Beginning at a point having Coordinates of X = 1,222,704.54 and Y = 462,089.57; thence West 10,335.62 feet to a point on the Texas-Louisiana boundary having Coordinates of X = 1,212,368.92 and Y = 462,089.57; thence on the said Texas-Louisiana boundary the following courses: North 21 degrees 41 minutes 28 seconds East 1,491.01 feet to a point having Coordinates of X = 1,212,920.00 and Y = 463,475.00, and North 14 degrees 23 minutes 58 seconds East 3,530.14 feet to a point having Coordinates of X = 1,213,797.87 and Y = 466,894.24; thence East 8,906.67 feet to a point having Coordinates of X = 1,222,704.54 and Y = 466,894.24; thence South 4,804.67 feet to the point of beginning, containing approximately **1,053.54 acres**, , **LESS AND EXCEPT** that portion thereof, if any, located West of the boundary line between the States of Texas and Louisiana as determined by the report of the Special Master and adjudicated by the Supreme Court of the United States in litigation styled **Texas v. Louisiana, et al No. 36 Original**, or as otherwise approved by said court, all as more particularly outlined on a plat on file in the Office of Mineral Resources, Department of Natural Resources. All bearings, distances and coordinates are based on Louisiana Coordinate System of 1927, (North or South Zone), where applicable.

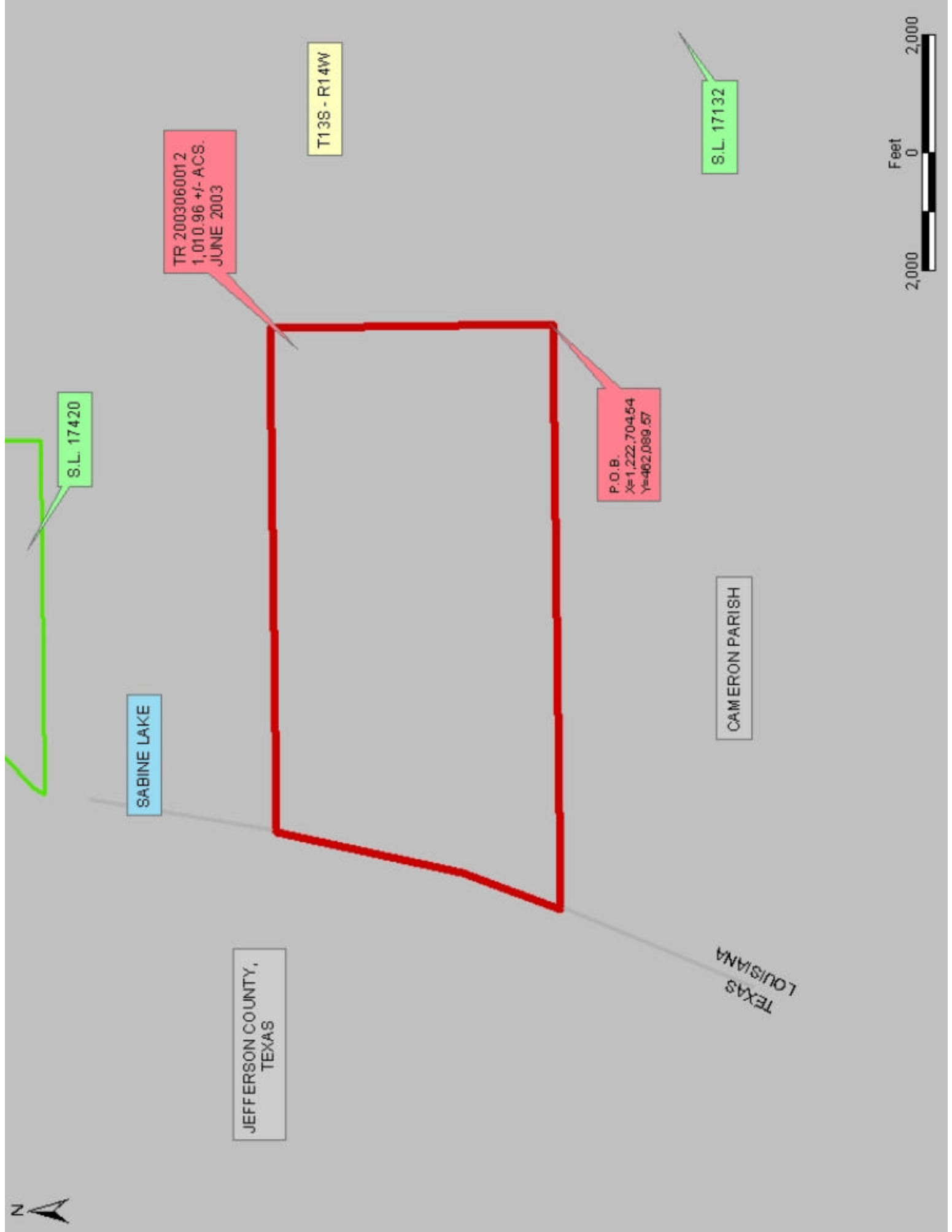
NOTE: The above description of the Tract nominated for lease has been provided and corrected, where required, exclusively by the nomination party. Any mineral lease selected from this Tract and awarded by the Louisiana State Mineral Board shall be without warranty of any kind, either express, implied, or statutory, including, but not limited to, the implied warranties of merchantability and fitness for a particular purpose. Should the mineral lease awarded by the Louisiana State Mineral Board be subsequently modified, cancelled or abrogated due to the existence of conflicting leases, operating agreements, private claims or other future obligations or conditions which may affect all or any portion of the leased Tract, it shall not relieve the Lessee of the obligation to pay any bonus due thereon to the Louisiana State Mineral Board, nor shall the Louisiana State Mineral Board be obligated to refund any consideration paid by the Lessor prior to such modification, cancellation, or abrogation, including, but not limited to, bonuses, rentals and royalties.

NOTE: The State of Louisiana does hereby reserve, and this lease shall be subject to, the imprescriptible right of surface use in the nature of a servitude in favor of the Department of Natural Resources, including its Offices and Commissions, for the sole purpose of implementing, constructing, servicing and maintaining approved coastal zone management and/or restoration projects. Utilization of any and all rights derived

under this lease by the mineral lessee, its agents, successors or assigns, shall not interfere with nor hinder the reasonable surface use by the Department of Natural Resources, its Offices or Commissions, as herein above reserved.

Applicant: Cypress Energy Corporation

Bidder	Cash Payment	Price / Acre	Rental	Oil	Gas	Other



SABINE LAKE

JEFFERSON COUNTY,
TEXAS

T13S - R14W

CAMERON PARISH

TEXAS
LOUISIANA

TR 2003060012
1,010.96 +/- ACS.
JUNE 2003

P.O.B.
X=1,222,704.54
Y=462,089.57

S.L. 17420

S.L. 17132



TRACT 35497 - Cameron Parish, Louisiana

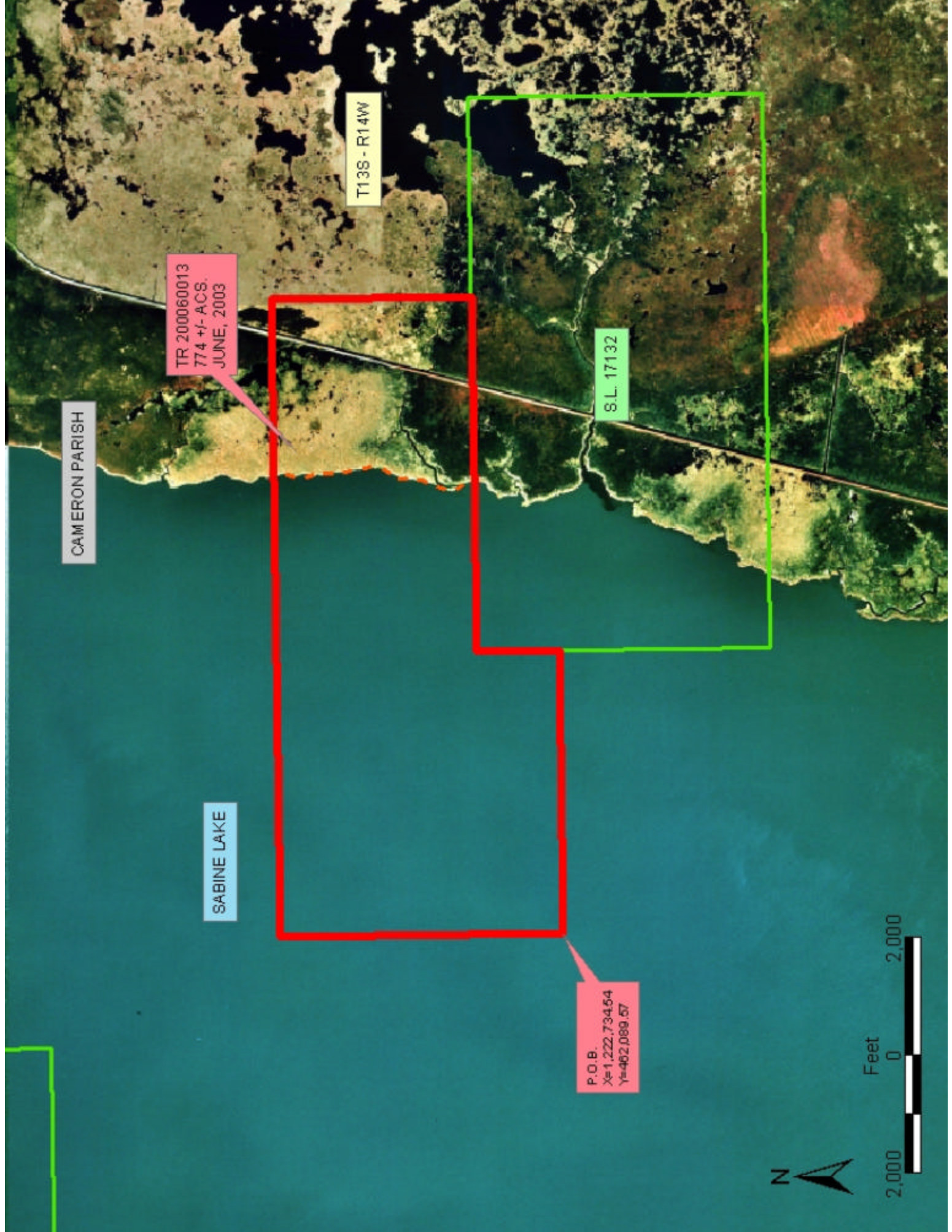
All of the lands now or formerly constituting the beds and bottoms of all water bodies of every nature and description the title of which vests in the State of Louisiana, together with all islands arising therein and other lands formed by accretion or by reliction, where allowed by law, excepting tax adjudicated lands, and not presently under mineral lease on June 11, 2003, situated in Cameron Parish, Louisiana, and more particularly described as follows: Beginning at a point having Coordinates of X = 1,222,704.54 and Y = 462,089.57; thence North 4,804.67 feet to a point having Coordinates of X = 1,222,704.54 and Y = 466,894.24; thence East 10,823.05 feet to a point having Coordinates of X = 1,233,527.59 and Y = 466,894.24; thence South 3,394.24 feet to a point on the North Line of State Lease No. 17132 having Coordinates of X = 1,233,527.59 and Y = 463,500.00; thence West 6,027.59 feet and South 1,410.43 feet along the North and West boundaries of said State Lease No. 17132 to a point on its West line having Coordinates of X = 1,227,500.00 and Y = 462,089.57; thence West 4,795.46 feet to the point of beginning, containing approximately **774.93 acres**, , all as more particularly outlined on a plat on file in the Office of Mineral Resources, Department of Natural Resources. All bearings, distances and coordinates are based on Louisiana Coordinate System of 1927, (North or South Zone), where applicable.

NOTE: The above description of the Tract nominated for lease has been provided and corrected, where required, exclusively by the nomination party. Any mineral lease selected from this Tract and awarded by the Louisiana State Mineral Board shall be without warranty of any kind, either express, implied, or statutory, including, but not limited to, the implied warranties of merchantability and fitness for a particular purpose. Should the mineral lease awarded by the Louisiana State Mineral Board be subsequently modified, cancelled or abrogated due to the existence of conflicting leases, operating agreements, private claims or other future obligations or conditions which may affect all or any portion of the leased Tract, it shall not relieve the Lessee of the obligation to pay any bonus due thereon to the Louisiana State Mineral Board, nor shall the Louisiana State Mineral Board be obligated to refund any consideration paid by the Lessor prior to such modification, cancellation, or abrogation, including, but not limited to, bonuses, rentals and royalties.

NOTE: The State of Louisiana does hereby reserve, and this lease shall be subject to, the imprescriptible right of surface use in the nature of a servitude in favor of the Department of Natural Resources, including its Offices and Commissions, for the sole purpose of implementing, constructing, servicing and maintaining approved coastal zone management and/or restoration projects. Utilization of any and all rights derived under this lease by the mineral lessee, its agents, successors or assigns, shall not interfere with nor hinder the reasonable surface use by the Department of Natural Resources, its Offices or Commissions, as herein above reserved.

Applicant: Cypress Energy Corporation

Bidder	Cash Payment	Price / Acre	Rental	Oil	Gas	Other



CAMERON PARISH

TR 200060013
774 +/- ACS.
JUNE, 2003

SABINE LAKE

T13S - R14W

S.L. 17132

P.O.B.
X=1,222,734.54
Y=482,089.57

