

TRACT 34530 - STATE AGENCY - Jefferson and Orleans Parishes, Louisiana

A certain tract of land belonging to and not under mineral lease from the Louisiana Department of Transportation and Development, on June 12, 2002, being more fully described as follows: Beginning at a point having Coordinates of X = 2,380,169.07 and Y = 457,521.23; thence East 12,071.73 feet to a point having Coordinates of X = 2,392,240.80 and Y = 457,521.23; thence South 16,666.33 feet to a point having Coordinates of X = 2,392,240.80 and Y = 440,854.90 feet; thence West 12,071.73 feet to a point having Coordinates of X = 2,380,169.07 and Y = 440,854.90; thence North 16,666.33 feet to the point of beginning, excluding beds and bottoms of all navigable waters, containing approximately **98.41 acres**, as shown outlined on a plat on file in the Office of Mineral Resources, Department of Natural Resources, as provided by the applicant. All bearings, distances and coordinates are based on Louisiana Coordinate System of 1927 (South Zone).

NOTE: The above description of the tract nominated for lease has been provided exclusively by the party nominating the tract for lease.

Maps depicting the nominated tract, containing the bearings, distances and coordinates of the nominated tract based on the Louisiana Coordinate System of 1927, North or South Zone, as applicable, are available for public inspection and review at the offices of the Louisiana State Mineral Board from 10:00 a.m. to 3:00 p.m. Monday - Friday.

Any mineral lease selected from the nominated tract and awarded by the Louisiana State Mineral Board shall be without warranty of any kind, either express, implied, or statutory, including, but not limited to, the implied warranties or merchantability and fitness for a particular purpose. Should the mineral lease awarded by the Louisiana State Mineral Board be subsequently modified, cancelled or abrogated due to the existence of conflicting leases, operating agreements, private claims or other existing or future obligations or conditions which may affect all or any portion of the leased tract, it shall not relieve the Lessee of the obligation to pay any bonus due thereon to the Louisiana State Mineral Board, nor shall the Louisiana State Mineral Board be obligated to refund any consideration paid by the Lessee prior to such modification, cancellation, or abrogation, including, but not limited to, bonuses, rents and royalties.

NOTE: The State of Louisiana does hereby reserve, and this lease shall be subject to, the imprescriptible right of surface use in the nature of a servitude in favor of the Department of Natural Resources, including its Offices and Commissions, for the sole purpose of implementing, constructing, servicing and maintaining approved coastal zone management and/or restoration projects. Utilization of any and all rights derived under this lease by the mineral lessee, its agents, successors or assigns, shall not interfere with nor hinder the reasonable surface use by the Department of Natural Resources, its Offices or Commissions, as hereinabove reserved.

Applicant: EKG Services to Agency and by Letter of Authorization from the Louisiana Department of Transportation and Development authorizing the Mineral Board to act in its behalf.

Bidder	Cash Payment	Price / Acre	Rental	Oil	Gas	Other



P.O.B
X = 2,380,169.07
Y = 457,521.23

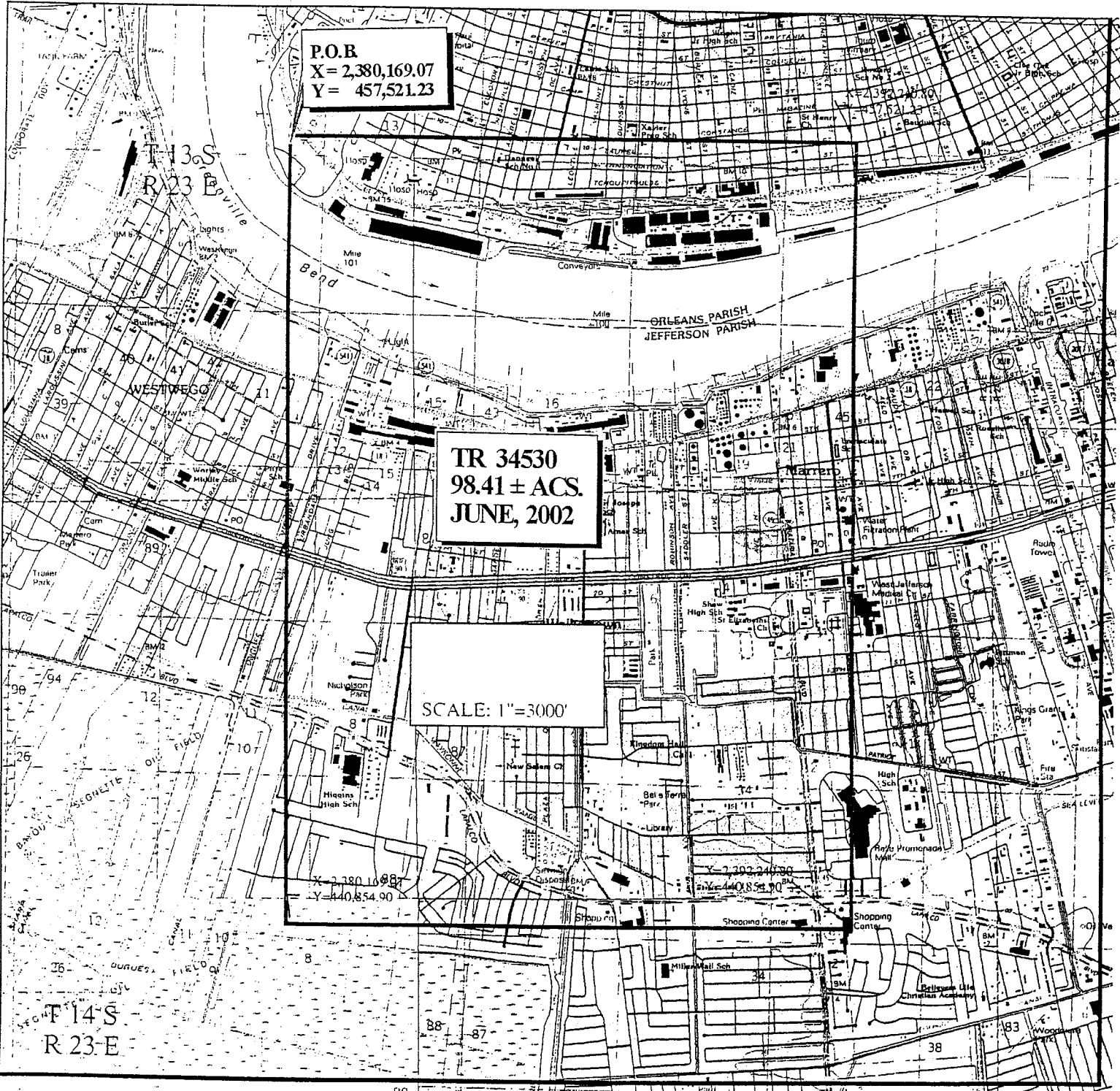
TR 34530
98.41 ± ACS.
JUNE, 2002

SCALE: 1"=3000'

X = 2,380,169.07
Y = 440,854.90

T13S
R23E
T14S
R23E

JEFFERSON & ORLEANS PARISHES



TRACT 34531 - STATE AGENCY - Jefferson and Orleans Parishes, Louisiana

A certain tract of land belonging to and not under mineral lease from the Jefferson Parish School Board, on June 12, 2002, being more fully described as follows: Beginning at a point having Coordinates of X = 2,380,169.07 and Y = 457,521.23; thence East 12,071.73 feet to a point having Coordinates of X = 2,392,240.80 and Y = 457,521.23; thence South 16,666.33 feet to a point having Coordinates of X = 2,392,240.80 and Y = 440,854.90 feet; thence West 12,071.73 feet to a point having Coordinates of X = 2,380,169.07 and Y = 440,854.90; thence North 16,666.33 feet to the point of beginning, excluding beds and bottoms of all navigable waters, containing approximately 27.36 acres, as shown outlined on a plat on file in the Office of Mineral Resources, Department of Natural Resources, as provided by the applicant. All bearings, distances and coordinates are based on Louisiana Coordinate System of 1927 (South Zone).

NOTE: The above description of the tract nominated for lease has been provided exclusively by the party nominating the tract for lease.

Maps depicting the nominated tract, containing the bearings, distances and coordinates of the nominated tract based on the Louisiana Coordinate System of 1927, North or South Zone, as applicable, are available for public inspection and review at the offices of the Louisiana State Mineral Board from 10:00 a.m. to 3:00 p.m. Monday - Friday.

Any mineral lease selected from the nominated tract and awarded by the Louisiana State Mineral Board shall be without warranty of any kind, either express, implied, or statutory, including, but not limited to, the implied warranties or merchantability and fitness for a particular purpose. Should the mineral lease awarded by the Louisiana State Mineral Board be subsequently modified, cancelled or abrogated due to the existence of conflicting leases, operating agreements, private claims or other existing or future obligations or conditions which may affect all or any portion of the leased tract, it shall not relieve the Lessee of the obligation to pay any bonus due thereon to the Louisiana State Mineral Board, nor shall the Louisiana State Mineral Board be obligated to refund any consideration paid by the Lessee prior to such modification, cancellation, or abrogation, including, but not limited to, bonuses, rents and royalties.

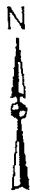
NOTE: The lessee shall conduct its operations in such a manner as to reasonably minimize any interference with or disruption of lessor's use of the surface of the leased property for educational purposes, or its use by lessor in connection with the education of the children of Jefferson Parish, expressly prohibiting any direct drilling upon any land on which a school site is situated.

NOTE: The State of Louisiana does hereby reserve, and this lease shall be subject to, the imprescriptible right of surface use in the nature of a servitude in favor of the Department of Natural Resources, including its Offices and Commissions, for the sole purpose of implementing, constructing, servicing and maintaining approved coastal zone management and/or restoration projects. Utilization of any and all rights derived

under this lease by the mineral lessee, its agents, successors or assigns, shall not interfere with nor hinder the reasonable surface use by the Department of Natural Resources, its Offices or Commissions, as hereinabove reserved.

Applicant: EKG Services to Agency and by Resolution from the Jefferson Parish School Board authorizing the Mineral Board to act in its behalf.

Bidder	Cash Payment	Price / Acre	Rental	Oil	Gas	Other



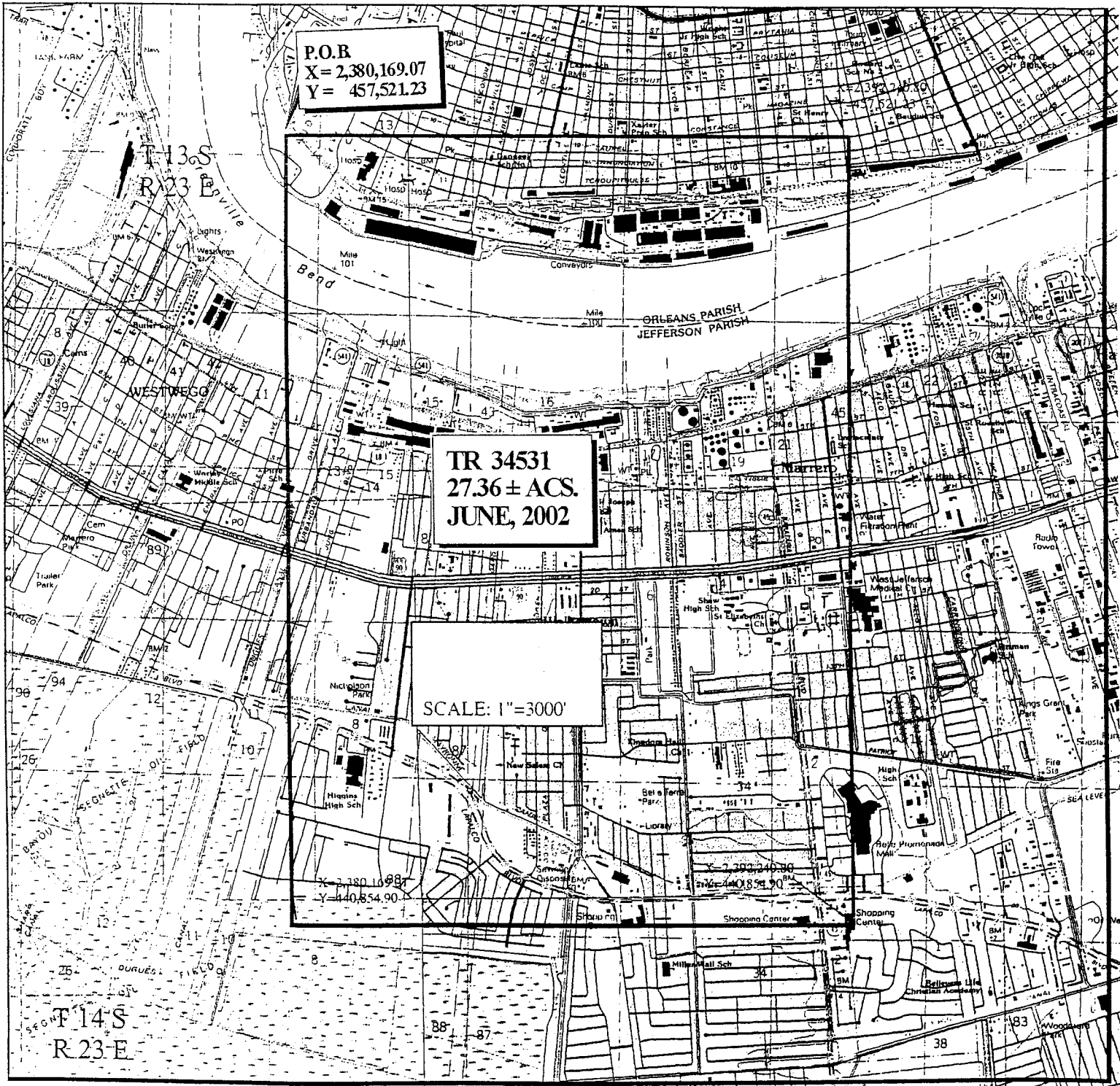
P.O.B
X = 2,380,169.07
Y = 457,521.23

TR 34531
27.36 ± ACS.
JUNE, 2002

SCALE: 1"=3000'

X = 2,380,169.07
Y = 440,854.90

X = 2,380,240.30
Y = 440,854.90



JEFFERSON & ORLEANS PARISHES

SECT 14 S
R. 23 E

TRACT 34532 - STATE AGENCY - Jefferson Parish, Louisiana

The State Mineral Board acting on behalf of the Jefferson Parish School Board, pursuant to Resolution adopted by that body and in accordance with Louisiana Revised Statutes 30:121-136 and 151-156, as amended, and Article 12, Section 18 of the Louisiana Constitution of 1921, as amended, which by Section 16 (A) 9, and 16 (B) of Article XIV of the 1974 Constitution is continued as a statute subject to arrangement in proper statutory form or modification provided by law, advertises the following described lands not under mineral lease on June 12, 2002: Beginning at a point having Coordinates of X = 2,374,822.93 and Y = 443,416.37; thence North 59 degrees 26 minutes 21 seconds East 6,208.57 feet to a point having Coordinates of X = 2,380,169.07 and Y = 446,573.13; thence South 5,718.23 feet to a point having Coordinates of X = 2,380,169.07 and Y = 440,854.90; thence East 10,056.32 feet to point having Coordinates of X = 2,390,225.39 and Y = 440,854.90; thence South 00 degrees 00 minutes 04 seconds East 10,395.26 feet to a point having Coordinates of X = 2,390,225.59 and Y = 430,459.64; thence West 18,383.22 feet to point having Coordinates of X = 2,371,842.37 and Y = 430,459.64; thence North 6,867.70 feet to the point having Coordinates of X = 2,371,842.37 and Y = 437,327.34; thence East 2,980.56 feet to a point having Coordinates of X = 2,374,822.93 and Y = 437,327.34; thence North 6,089.03 feet to the point of beginning, excluding beds and bottoms of all navigable waters located in said section, containing approximately 41.37 acres, as shown outlined on a plat on file in the Office of Mineral Resources, Department of Natural Resources, as provided by the applicant. All bearings, distances and coordinates are based on Louisiana Coordinate System of 1927 (South Zone).

NOTE: The above description of the tract nominated for lease has been provided exclusively by the party nominating the tract for lease.

Maps depicting the nominated tract, containing the bearings, distances and coordinates of the nominated tract based on the Louisiana Coordinate System of 1927, North or South Zone, as applicable, are available for public inspection and review at the offices of the Louisiana State Mineral Board from 10:00 a.m. to 3:00 p.m. Monday - Friday.

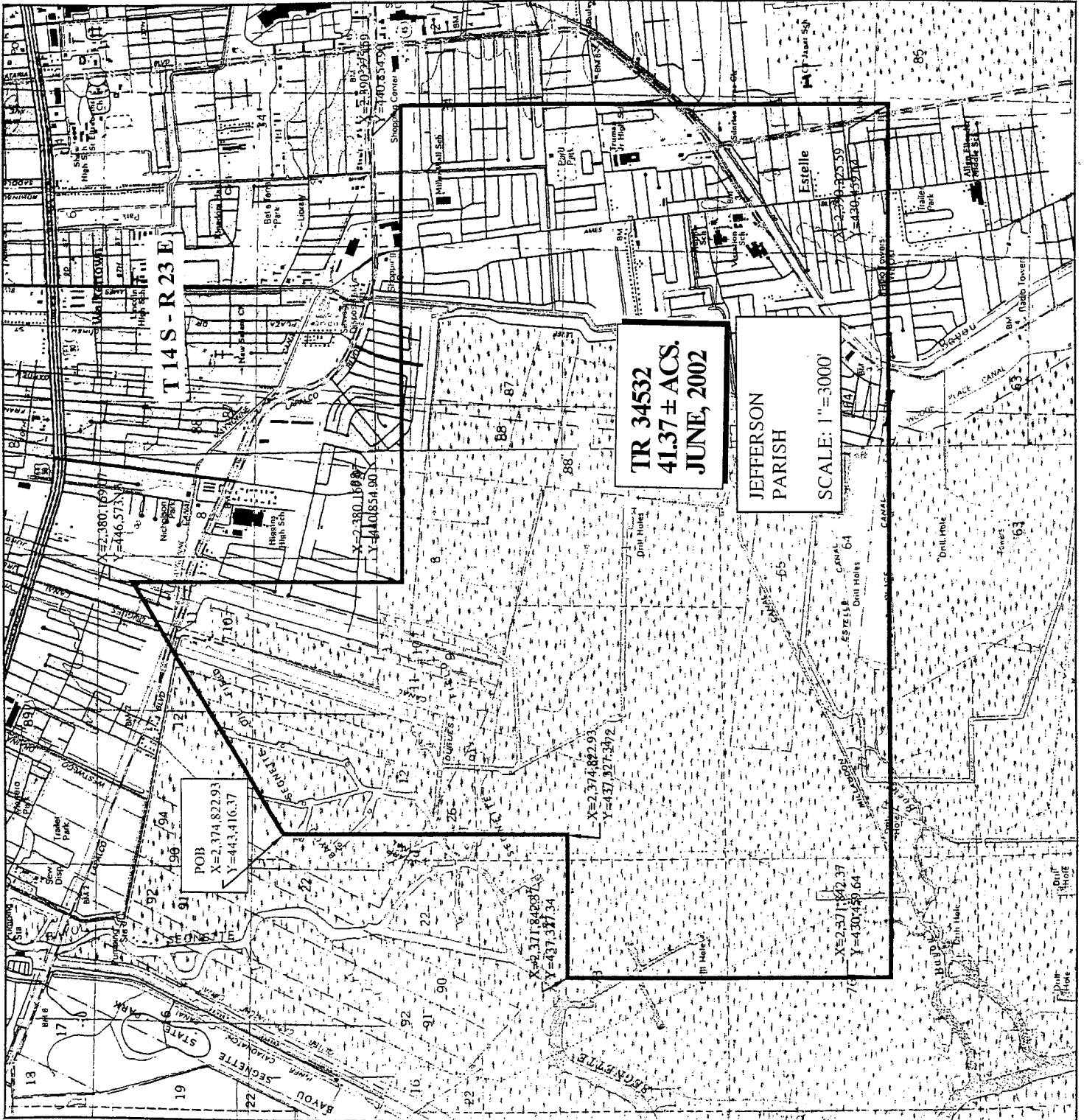
Any mineral lease selected from the nominated tract and awarded by the Louisiana State Mineral Board shall be without warranty of any kind, either express, implied, or statutory, including, but not limited to, the implied warranties or merchantability and fitness for a particular purpose. Should the mineral lease awarded by the Louisiana State Mineral Board be subsequently modified, cancelled or abrogated due to the existence of conflicting leases, operating agreements, private claims or other existing or future obligations or conditions which may affect all or any portion of the leased tract, it shall not relieve the Lessee of the obligation to pay any bonus due thereon to the Louisiana State Mineral Board, nor shall the Louisiana State Mineral Board be obligated to refund any consideration paid by the Lessee prior to such modification, cancellation, or abrogation, including, but not limited to, bonuses, rents and royalties.

NOTE: The lessee shall conduct its operations in such a manner as to reasonably minimize any interference with or disruption of lessor's use of the surface of the leased property for educational purposes, or its use by lessor in connection with the education of the children of Jefferson Parish, expressly prohibiting any direct drilling upon any land on which a school is situated.

NOTE: The State of Louisiana does hereby reserve, and this lease shall be subject to, the imprescriptible right of surface use in the nature of a servitude in favor of the Department of Natural Resources, including its Offices and Commissions, for the sole purpose of implementing, constructing, servicing and maintaining approved coastal zone management and/or restoration projects. Utilization of any and all rights derived under this lease by the mineral lessee, its agents, successors or assigns, shall not interfere with nor hinder the reasonable surface use by the Department of Natural Resources, its Offices or Commissions, as hereinabove reserved.

Applicant: EKG Services to Agency and by Resolution from the Jefferson Parish School Board authorizing the Mineral Board to act in its behalf.

Bidder	Cash Payment	Price / Acre	Rental	Oil	Gas	Other



TR 34532
41.37 ± ACS.
JUNE, 2002

JEFFERSON
PARISH
SCALE: 1" = 3000'

T 14 S - R 23 E

POB
 X=2,374,822.93
 Y=443,416.37

X=2,374,822.93
 Y=437,327.34

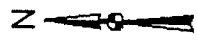
X=2,371,842.74
 Y=437,377.34

X=2,371,842.37
 Y=430,450.64

X=2,380,168.87
 Y=440,854.90

X=2,380,168.87
 Y=446,573.11

X=2,390,725.59
 Y=430,457.78



TRACT 34533 - STATE AGENCY - Jefferson Parish, Louisiana

A certain tract of land belonging to and not under mineral lease from the West Jefferson Levee District, on June 12, 2002, being more fully described as follows: Beginning at a point having Coordinates of X = 2,371,842.37 and Y = 430,459.64; thence East 18,383.22 feet to a point having Coordinates of X = 2,390,225.59 and Y = 430,459.64; thence South 12,066.11 feet to a point having Coordinates of X = 2,390,225.59 and Y = 418,393.53; thence West 18,383.22 feet to point having Coordinates of X = 2,371,842.37 and Y = 418,393.53; thence North 12,066.11 feet to the point of beginning, excluding beds and bottoms of all navigable waters, containing approximately **44.60 acres**, as shown outlined on a plat on file in the Office of Mineral Resources, Department of Natural Resources, as provided by the applicant. All bearings, distances and coordinates are based on Louisiana Coordinate System of 1927 (South Zone).

NOTE: The above description of the tract nominated for lease has been provided exclusively by the party nominating the tract for lease.

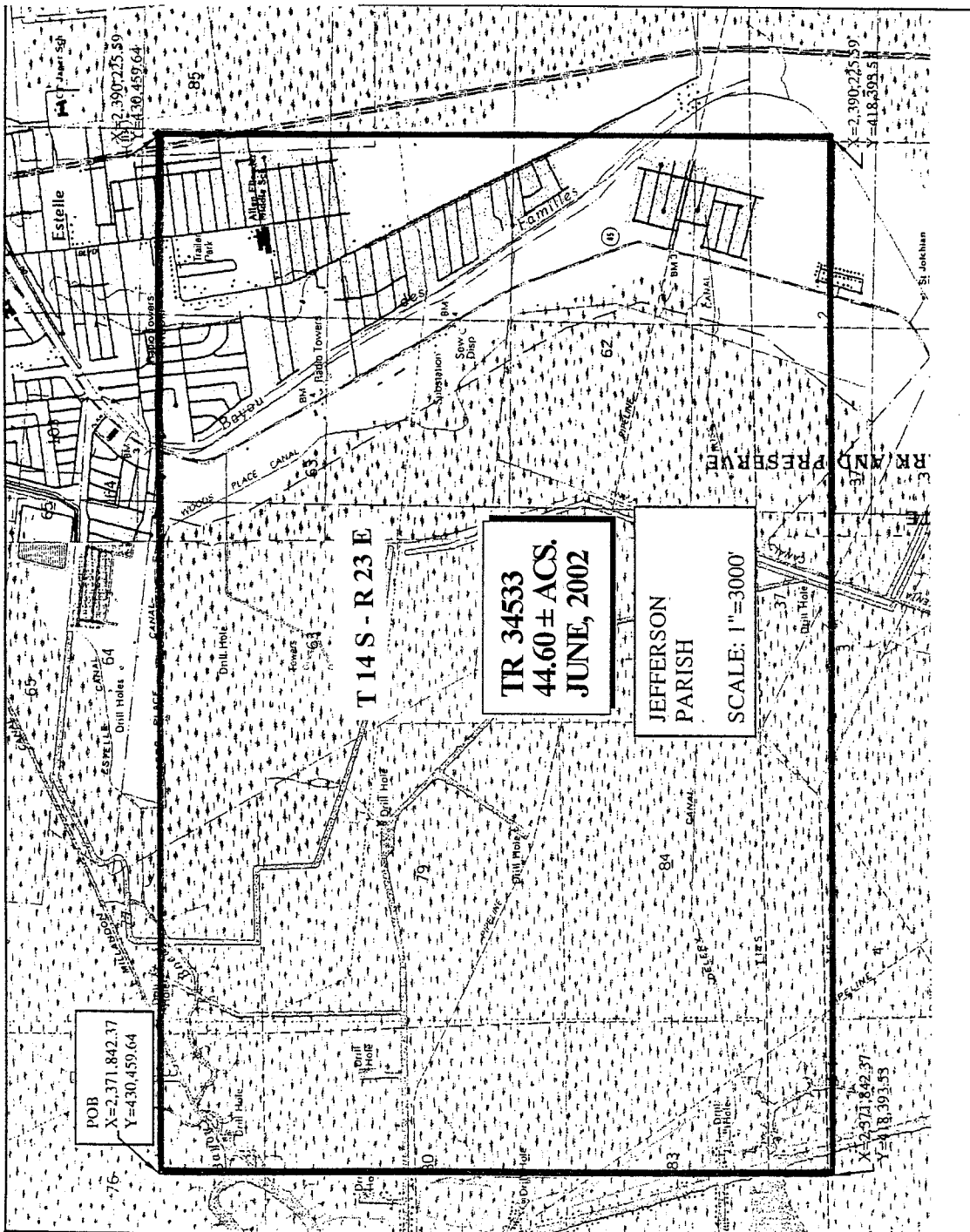
Maps depicting the nominated tract, containing the bearings, distances and coordinates of the nominated tract based on the Louisiana Coordinate System of 1927, North or South Zone, as applicable, are available for public inspection and review at the offices of the Louisiana State Mineral Board from 10:00 a.m. to 3:00 p.m. Monday - Friday.

Any mineral lease selected from the nominated tract and awarded by the Louisiana State Mineral Board shall be without warranty of any kind, either express, implied, or statutory, including, but not limited to, the implied warranties or merchantability and fitness for a particular purpose. Should the mineral lease awarded by the Louisiana State Mineral Board be subsequently modified, cancelled or abrogated due to the existence of conflicting leases, operating agreements, private claims or other existing or future obligations or conditions which may affect all or any portion of the leased tract, it shall not relieve the Lessee of the obligation to pay any bonus due thereon to the Louisiana State Mineral Board, nor shall the Louisiana State Mineral Board be obligated to refund any consideration paid by the Lessee prior to such modification, cancellation, or abrogation, including, but not limited to, bonuses, rents and royalties.

NOTE: The State of Louisiana does hereby reserve, and this lease shall be subject to, the imprescriptible right of surface use in the nature of a servitude in favor of the Department of Natural Resources, including its Offices and Commissions, for the sole purpose of implementing, constructing, servicing and maintaining approved coastal zone management and/or restoration projects. Utilization of any and all rights derived under this lease by the mineral lessee, its agents, successors or assigns, shall not interfere with nor hinder the reasonable surface use by the Department of Natural Resources, its Offices or Commissions, as hereinabove reserved.

Applicant: Merlin Oil & Gas, Inc. to Agency and by Resolution from the West Jefferson Levee District authorizing the Mineral Board to act in its behalf.

Bidder	Cash Payment	Price / Acre	Rental	Oil	Gas	Other



TRACT 34534 - STATE AGENCY - Jefferson Parish, Louisiana

A certain tract of land belonging to and not under mineral lease from the Jefferson Parish School Board, on June 12, 2002, being more fully described as follows: Beginning at a point having Coordinates of X = 2,371,842.37 and Y = 430,459.64; thence East 18,383.22 feet to a point having Coordinates of X = 2,390,225.59 and Y = 430,459.64; thence South 12,066.11 feet to a point having Coordinates of X = 2,390,225.59 and Y = 418,393.53; thence West 18,383.22 feet to point having Coordinates of X = 2,371,842.37 and Y = 418,393.53; thence North 12,066.11 feet to the point of beginning, excluding beds and bottoms of all navigable waters, containing approximately 2.13 acres, as shown outlined on a plat on file in the Office of Mineral Resources, Department of Natural Resources, as provided by the applicant. All bearings, distances and coordinates are based on Louisiana Coordinate System of 1927 (South Zone).

NOTE: The above description of the tract nominated for lease has been provided exclusively by the party nominating the tract for lease.

Maps depicting the nominated tract, containing the bearings, distances and coordinates of the nominated tract based on the Louisiana Coordinate System of 1927, North or South Zone, as applicable, are available for public inspection and review at the offices of the Louisiana State Mineral Board from 10:00 a.m. to 3:00 p.m. Monday - Friday.

Any mineral lease selected from the nominated tract and awarded by the Louisiana State Mineral Board shall be without warranty of any kind, either express, implied, or statutory, including, but not limited to, the implied warranties or merchantability and fitness for a particular purpose. Should the mineral lease awarded by the Louisiana State Mineral Board be subsequently modified, cancelled or abrogated due to the existence of conflicting leases, operating agreements, private claims or other existing or future obligations or conditions which may affect all or any portion of the leased tract, it shall not relieve the Lessee of the obligation to pay any bonus due thereon to the Louisiana State Mineral Board, nor shall the Louisiana State Mineral Board be obligated to refund any consideration paid by the Lessee prior to such modification, cancellation, or abrogation, including, but not limited to, bonuses, rents and royalties.

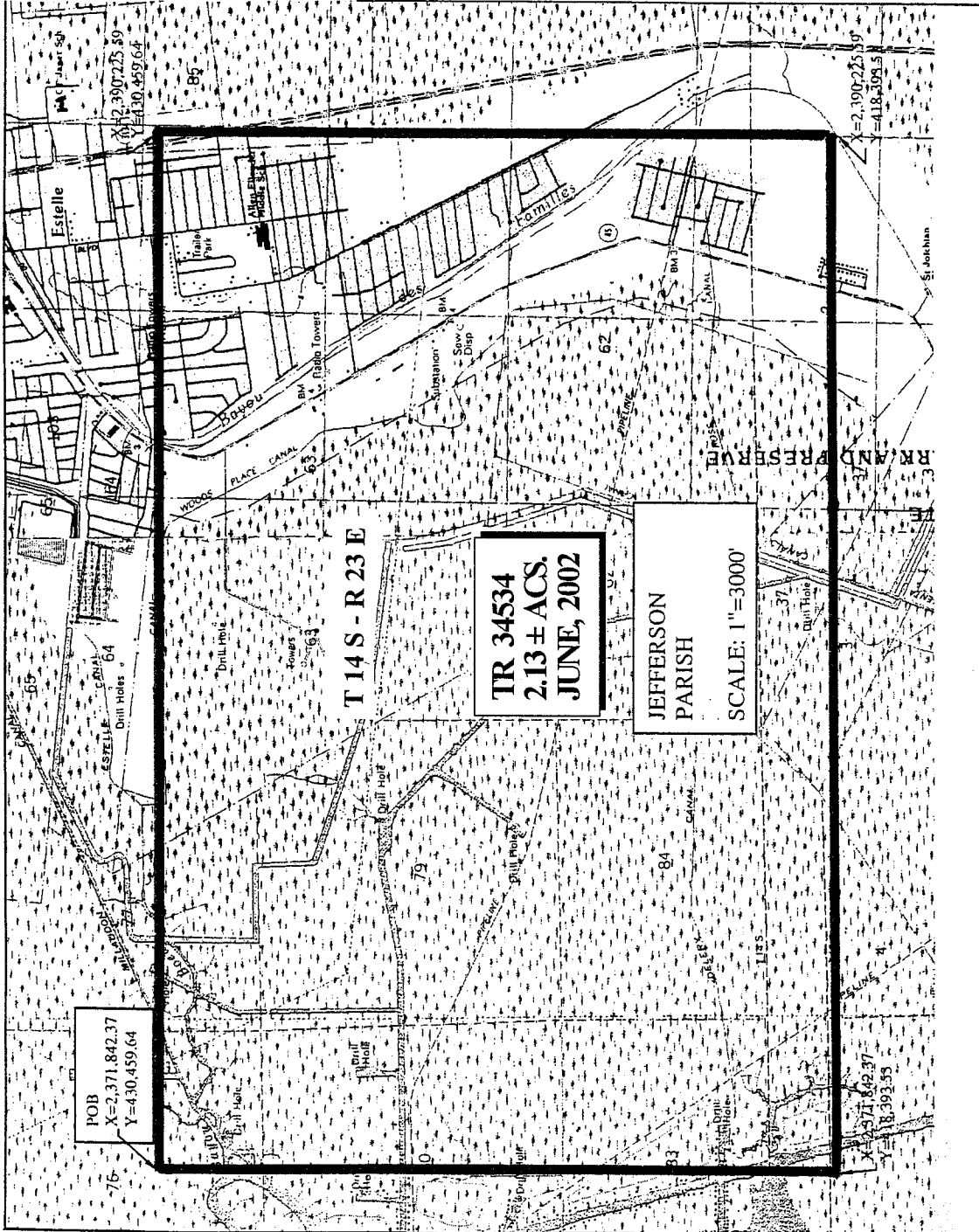
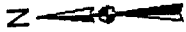
NOTE: The lessee shall conduct its operations in such a manner as to reasonably minimize any interference with or disruption of lessor's use of the surface of the leased property for educational purposes, or its use by lessor in connection with the education of the children of Jefferson Parish, expressly prohibiting any direct drilling upon any land on which a school site is situated.

NOTE: The State of Louisiana does hereby reserve, and this lease shall be subject to, the imprescriptible right of surface use in the nature of a servitude in favor of the Department of Natural Resources, including its Offices and Commissions, for the sole purpose of implementing, constructing, servicing and maintaining approved coastal zone management and/or restoration projects. Utilization of any and all rights derived

under this lease by the mineral lessee, its agents, successors or assigns, shall not interfere with nor hinder the reasonable surface use by the Department of Natural Resources, its Offices or Commissions, as hereinabove reserved.

Applicant: EKG Services to Agency and by Resolution from the Jefferson Parish School Board authorizing the Mineral Board to act in its behalf.

Bidder	Cash Payment	Price / Acre	Rental	Oil	Gas	Other



POB
 X=2,371,842.37
 Y=430,459.64

TR 34534
 2.13 ± ACS.
 JUNE, 2002

JEFFERSON
 PARISH
 SCALE: 1"=3000'

X=2,371,842.37
 Y=430,459.64

X=2,390,225.59
 Y=418,109.51

X=2,390,225.59
 Y=418,109.51

T 14 S - R 23 E

BRAND RESERVE

