

**TRACT 34523 - STATE AGENCY - Jefferson Parish, Louisiana**

A certain tract of land belonging to and not under mineral lease from the Louisiana Department of Transportation and Development, on June 12, 2002, being more fully described as follows: Beginning at a point having Coordinates of X = 2,361,417.99 and Y = 468,201.03; thence East 12,636.29 feet to a point having Coordinates of X = 2,374,054.28 and Y = 468,201.03; thence South 11,697.47 feet to a point having Coordinates of X = 2,374,054.28 and Y = 456,503.56; thence West 4,104.53 feet to a point having Coordinates of X = 2,369,949.75 and Y = 456,503.56; thence South 4,727.69 feet to a point having Coordinates of X = 2,369,949.75 and Y = 451,775.87; thence West 6,662.12 feet to a point having Coordinates of X = 2,363,287.63 and Y = 451,775.87; thence North 4,727.69 feet to a point having Coordinates of X = 2,363,287.63 and Y = 456,503.56; thence West 1,869.64 feet to a point having Coordinates of X = 2,361,417.99 and Y = 456,503.56; thence North 11,697.47 feet to the point of beginning, excluding beds and bottoms of all navigable waters, containing approximately **181.58 acres**, as shown outlined on a plat on file in the Office of Mineral Resources, Department of Natural Resources, as provided by the applicant. All bearings, distances and coordinates are based on Louisiana Coordinate System of 1927 (South Zone).

NOTE: The above description of the tract nominated for lease has been provided exclusively by the party nominating the tract for lease.

Maps depicting the nominated tract, containing the bearings, distances and coordinates of the nominated tract based on the Louisiana Coordinate System of 1927, North or South Zone, as applicable, are available for public inspection and review at the offices of the Louisiana State Mineral Board from 10:00 a.m. to 3:00 p.m. Monday - Friday.

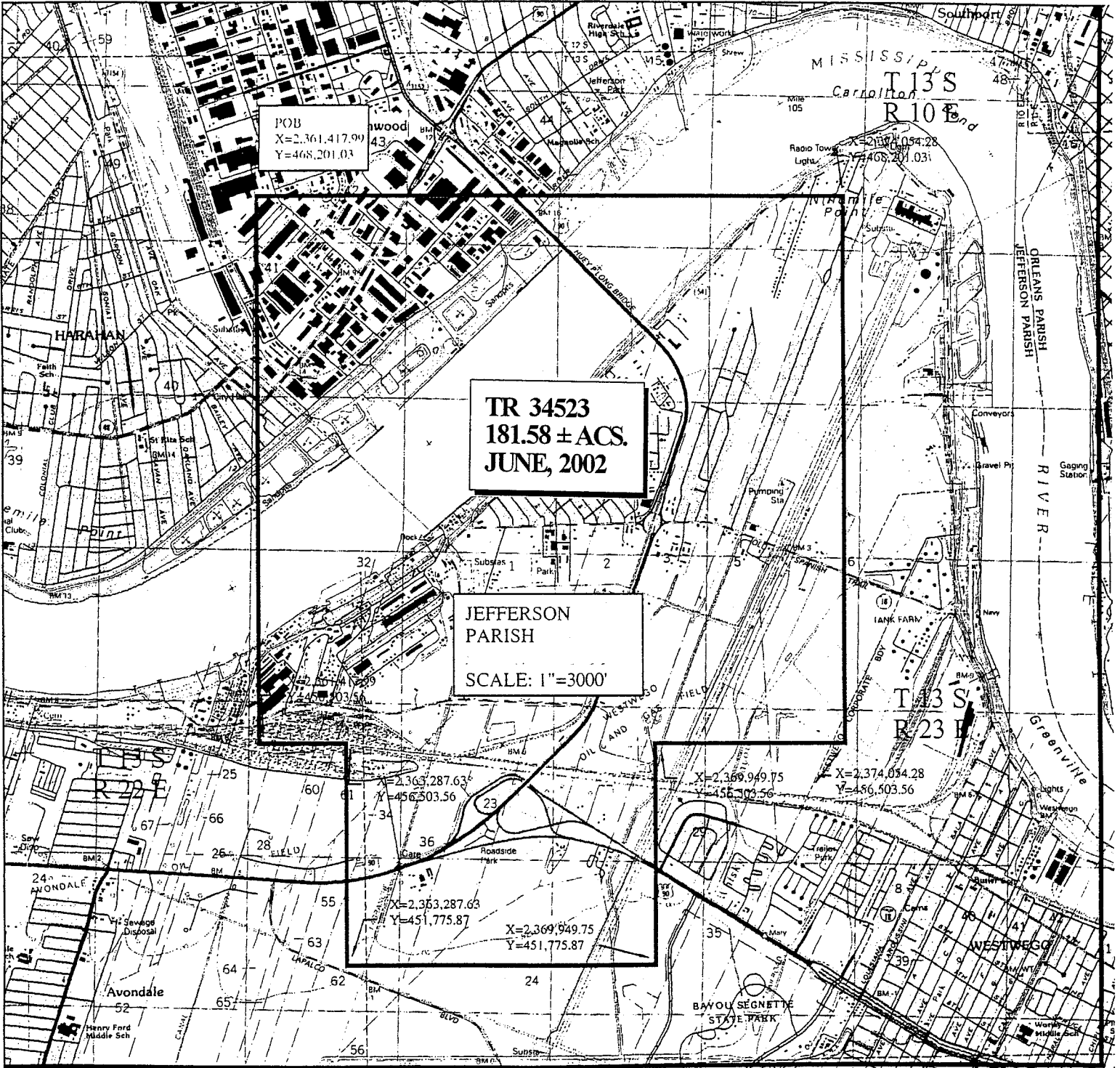
Any mineral lease selected from the nominated tract and awarded by the Louisiana State Mineral Board shall be without warranty of any kind, either express, implied, or statutory, including, but not limited to, the implied warranties or merchantability and fitness for a particular purpose. Should the mineral lease awarded by the Louisiana State Mineral Board be subsequently modified, cancelled or abrogated due to the existence of conflicting leases, operating agreements, private claims or other existing or future obligations or conditions which may affect all or any portion of the leased tract, it shall not relieve the Lessee of the obligation to pay any bonus due thereon to the Louisiana State Mineral Board, nor shall the Louisiana State Mineral Board be obligated to refund any consideration paid by the Lessee prior to such modification, cancellation, or abrogation, including, but not limited to, bonuses, rents and royalties.

NOTE: The State of Louisiana does hereby reserve, and this lease shall be subject to, the imprescriptible right of surface use in the nature of a servitude in favor of the Department of Natural Resources, including its Offices and Commissions, for the sole purpose of implementing, constructing, servicing and maintaining approved coastal zone management and/or restoration projects. Utilization of any and all rights derived under this lease by the mineral lessee, its agents, successors or assigns,

shall not interfere with nor hinder the reasonable surface use by the Department of Natural Resources, its Offices or Commissions, as hereinabove reserved.

Applicant: EKG Services to Agency and by Letter of Authorization from the Louisiana Department of Transportation and Development authorizing the Mineral Board to act in its behalf.

Bidder	Cash Payment	Price / Acre	Rental	Oil	Gas	Other



POB  
 X=2,361,417.99  
 Y=468,201.03

TR 34523  
 181.58 ± ACS.  
 JUNE, 2002

JEFFERSON  
 PARISH  
 SCALE: 1"=3000'

X=2,363,287.63  
 Y=456,503.56

X=2,363,287.63  
 Y=451,775.87

X=2,369,949.75  
 Y=451,775.87

X=2,369,949.75  
 Y=456,503.56

X=2,374,034.28  
 Y=456,503.56

MISSISSIPPI  
 RIVER  
 T13S  
 R10E

T13S  
 R23E

BAYOU SEGNETTE  
 STATE PARK

ORLEANS PARISH  
 JEFFERSON PARISH

RIVER

GREENVILLE

HARAHAN

Point

R22E

Avondale

Henry Ford Middle Sch

Riverdale High Sch

Jefferson Park

Wood 43

Substas 1

Substas 2

Substas 3

Substas 4

Substas 5

Substas 6

Substas 7

Substas 8

Substas 9

Substas 10

Substas 11

Substas 12

Substas 13

Substas 14

Substas 15

Substas 16

Substas 17

Substas 18

Substas 19

Substas 20

Substas 21

Substas 22

Substas 23

Substas 24

Substas 25

Substas 26

Substas 27

Substas 28

Substas 29

Substas 30

Substas 31

Substas 32

Substas 33

Substas 34

Substas 35

Substas 36

Substas 37

Substas 38

Substas 39

Substas 40

Substas 41

Substas 42

Substas 43

Substas 44

Substas 45

Substas 46

Substas 47

Substas 48

Substas 49

Substas 50

Substas 51

Substas 52

Substas 53

Substas 54

Substas 55

Substas 56

Substas 57

Substas 58

Substas 59

Substas 60

Substas 61

Substas 62

Substas 63

Substas 64

Substas 65

Substas 66

Substas 67

Substas 68

Substas 69

Substas 70

Substas 71

Substas 72

Substas 73

Substas 74

Substas 75

Substas 76

Substas 77

Substas 78

Substas 79

Substas 80

Substas 81

Substas 82

Substas 83

Substas 84

Substas 85

Substas 86

Substas 87

Substas 88

Substas 89

Substas 90

Substas 91

Substas 92

Substas 93

Substas 94

Substas 95

Substas 96

Substas 97

Substas 98

Substas 99

Substas 100

**TRACT 34524 - STATE AGENCY - Jefferson Parish, Louisiana**

A certain tract of land belonging to and not under mineral lease from the Jefferson Parish School Board, on June 12, 2002, being more fully described as follows: Beginning at a point having Coordinates of X = 2,361,417.99 and Y = 468,201.03; thence East 12,636.29 feet to a point having Coordinates of X = 2,374,054.28 and Y = 468,201.03; thence South 11,697.47 feet to a point having Coordinates of X = 2,374,054.28 and Y = 456,503.56; thence West 4,104.53 feet to a point having Coordinates of X = 2,369,949.75 and Y = 456,503.56; thence South 4,727.69 feet to a point having Coordinates of X = 2,369,949.75 and Y = 451,775.87; thence West 6,662.12 feet to a point having Coordinates of X = 2,363,287.63 and Y = 451,775.87; thence North 4,727.69 feet to a point having Coordinates of X = 2,363,287.63 and Y = 456,503.56; thence West 1,869.64 feet to a point having Coordinates of X = 2,361,417.99 and Y = 456,503.56; thence North 11,697.47 feet to the point of beginning, excluding beds and bottoms of all navigable waters, containing approximately 3.28 acres, as shown outlined on a plat on file in the Office of Mineral Resources, Department of Natural Resources, as provided by the applicant. All bearings, distances and coordinates are based on Louisiana Coordinate System of 1927 (South Zone).

NOTE: The above description of the tract nominated for lease has been provided exclusively by the party nominating the tract for lease.

Maps depicting the nominated tract, containing the bearings, distances and coordinates of the nominated tract based on the Louisiana Coordinate System of 1927, North or South Zone, as applicable, are available for public inspection and review at the offices of the Louisiana State Mineral Board from 10:00 a.m. to 3:00 p.m. Monday - Friday.

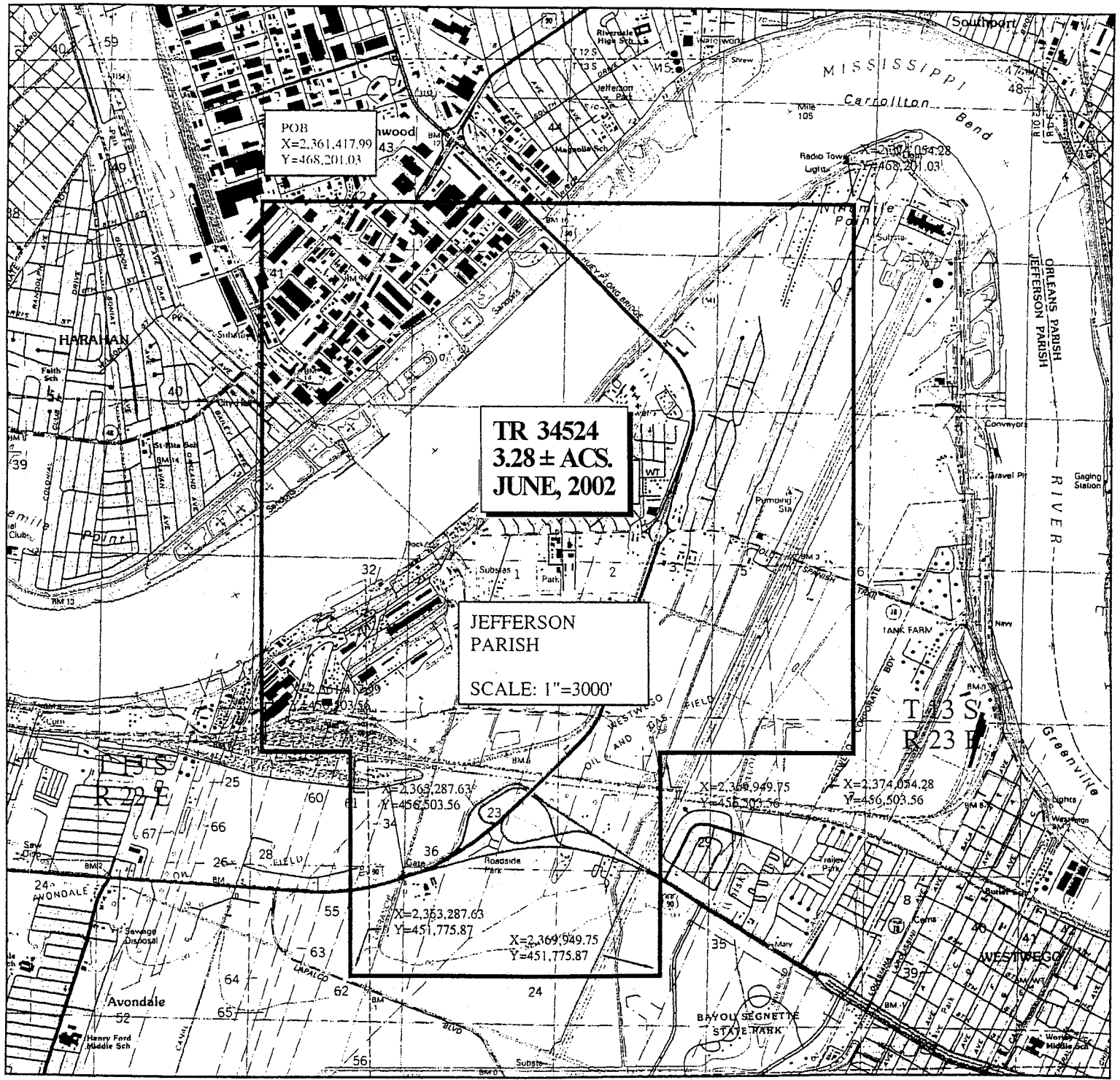
Any mineral lease selected from the nominated tract and awarded by the Louisiana State Mineral Board shall be without warranty of any kind, either express, implied, or statutory, including, but not limited to, the implied warranties or merchantability and fitness for a particular purpose. Should the mineral lease awarded by the Louisiana State Mineral Board be subsequently modified, cancelled or abrogated due to the existence of conflicting leases, operating agreements, private claims or other existing or future obligations or conditions which may affect all or any portion of the leased tract, it shall not relieve the Lessee of the obligation to pay any bonus due thereon to the Louisiana State Mineral Board, nor shall the Louisiana State Mineral Board be obligated to refund any consideration paid by the Lessee prior to such modification, cancellation, or abrogation, including, but not limited to, bonuses, rents and royalties.

NOTE: The lessee shall conduct its operations in such a manner as to reasonably minimize any interference with or disruption of lessor's use of the surface of the leased property for educational purposes, or its use by lessor in connection with the education of the children of Jefferson Parish, expressly prohibiting any direct drilling upon any land on which a school site is situated.

NOTE: The State of Louisiana does hereby reserve, and this lease shall be subject to, the imprescriptible right of surface use in the nature of a servitude in favor of the Department of Natural Resources, including its Offices and Commissions, for the sole purpose of implementing, constructing, servicing and maintaining approved coastal zone management and/or restoration projects. Utilization of any and all rights derived under this lease by the mineral lessee, its agents, successors or assigns, shall not interfere with nor hinder the reasonable surface use by the Department of Natural Resources, its Offices or Commissions, as hereinabove reserved.

Applicant: EKG Services to Agency and by Resolution from the Jefferson Parish School Board authorizing the Mineral Board to act in its behalf.

Bidder	Cash Payment	Price / Acre	Rental	Oil	Gas	Other



POB  
X=2,361,417.99  
Y=468,201.03

Radio Tower  
X=2,374,054.28  
Light  
Y=468,201.03

TR 34524  
3.28 ± ACS.  
JUNE, 2002

JEFFERSON  
PARISH  
SCALE: 1"=3000'

X=2,363,287.63  
Y=456,503.56

X=2,368,949.75  
Y=456,503.56

X=2,374,054.28  
Y=456,503.56

X=2,353,287.63  
Y=451,775.87

X=2,369,949.75  
Y=451,775.87

**TRACT 34525 - STATE AGENCY - Jefferson and Orleans Parishes, Louisiana**

A certain tract of land belonging to and not under mineral lease from the Louisiana Department of Transportation and Development, on June 12, 2002, being more fully described as follows: Beginning at a point having Coordinates of X = 2,366,061.59 and Y = 473,706.49; thence East 18,408.06 feet to a point having Coordinates of X = 2,384,469.65 and Y = 473,706.49; thence South 16,185.26 feet to a point having Coordinates of X = 2,384,469.65 and Y = 457,521.23; thence West 10,415.37 feet to a point having Coordinates of X = 2,374,054.28 and Y = 457,521.23; thence North 10,679.80 feet to a point having Coordinates of X = 2,374,054.28 and Y = 468,201.03; thence West 7,992.69 feet to a point having Coordinates of X = 2,366,061.59 and Y = 468,201.03; thence North 5,505.46 feet to the point of beginning, excluding beds and bottoms of all navigable waters, containing approximately 11.24 acres, as shown outlined on a plat on file in the Office of Mineral Resources, Department of Natural Resources, as provided by the applicant. All bearings, distances and coordinates are based on Louisiana Coordinate System of 1927 (South Zone).

NOTE: The above description of the tract nominated for lease has been provided exclusively by the party nominating the tract for lease.

Maps depicting the nominated tract, containing the bearings, distances and coordinates of the nominated tract based on the Louisiana Coordinate System of 1927, North or South Zone, as applicable, are available for public inspection and review at the offices of the Louisiana State Mineral Board from 10:00 a.m. to 3:00 p.m. Monday - Friday.

Any mineral lease selected from the nominated tract and awarded by the Louisiana State Mineral Board shall be without warranty of any kind, either express, implied, or statutory, including, but not limited to, the implied warranties or merchantability and fitness for a particular purpose. Should the mineral lease awarded by the Louisiana State Mineral Board be subsequently modified, cancelled or abrogated due to the existence of conflicting leases, operating agreements, private claims or other existing or future obligations or conditions which may affect all or any portion of the leased tract, it shall not relieve the Lessee of the obligation to pay any bonus due thereon to the Louisiana State Mineral Board, nor shall the Louisiana State Mineral Board be obligated to refund any consideration paid by the Lessee prior to such modification, cancellation, or abrogation, including, but not limited to, bonuses, rents and royalties.

NOTE: The State of Louisiana does hereby reserve, and this lease shall be subject to, the imprescriptible right of surface use in the nature of a servitude in favor of the Department of Natural Resources, including its Offices and Commissions, for the sole purpose of implementing, constructing, servicing and maintaining approved coastal zone management and/or restoration projects. Utilization of any and all rights derived under this lease by the mineral lessee, its agents, successors or assigns, shall not interfere with nor hinder the reasonable surface use by the Department of Natural Resources, its Offices or Commissions, as hereinabove reserved.

Applicant: EKG Services to Agency and by Letter of Authorization from the Louisiana Department of Transportation and Development authorizing the Mineral Board to act in its behalf.

Bidder	Cash Payment	Price / Acre	Rental	Oil	Gas	Other





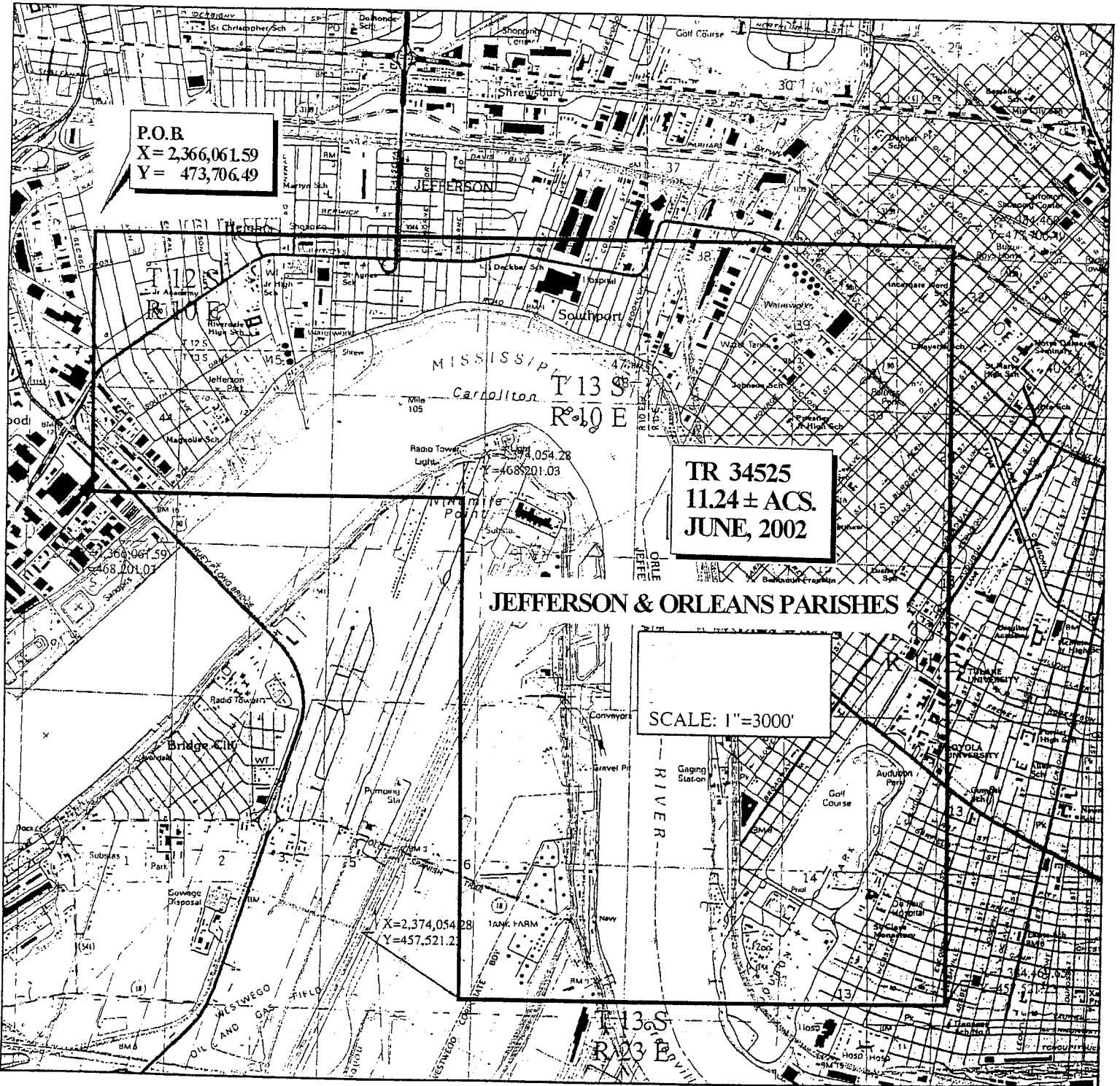
P.O.B  
X = 2,366,061.59  
Y = 473,706.49

TR 34525  
11.24 ± ACS.  
JUNE, 2002

JEFFERSON & ORLEANS PARISHES

SCALE: 1"=3000'

X=2,374,054.28  
Y=457,521.21



**TRACT 34526 - STATE AGENCY - Jefferson and Orleans Parishes, Louisiana**

A certain tract of land belonging to and not under mineral lease from the West Jefferson Levee District, on June 12, 2002, being more fully described as follows: Beginning at a point having Coordinates of X = 2,363,287.63 and Y = 451,775.87; thence East 6,662.12 feet to a point having Coordinates of X = 2,369,949.75 and Y = 451,775.87; thence North 4,727.69 feet to a point having Coordinates of X = 2,369,949.75 and Y = 456,503.56; thence West 4,104.53 feet to a point having Coordinates of X = 2,374,054.28 and Y = 456,503.56; thence North 1,017.67 feet to a point having Coordinates of X = 2,374,054.28 and Y = 457,521.23; thence East 6,114.79 feet to a point having Coordinates of X = 2,380,169.07 and Y = 457,521.23; thence South 10,863.25 feet to a point having Coordinates of X = 2,380,169.07 and Y = 446,657.98; thence South 59 degrees 06 minutes 51 seconds West 12,879.78 feet to a point having Coordinates of X = 2,369,115.75 and Y = 440,046.41 thence West 5,828.12 feet to a point having Coordinates of X = 2,363,287.63 and Y = 440,046.41; thence North 11,729.46 feet to the point of beginning, excluding beds and bottoms of all navigable waters, containing approximately 8.99 acres, as shown outlined on a plat on file in the Office of Mineral Resources, Department of Natural Resources, as provided by the applicant. All bearings, distances and coordinates are based on Louisiana Coordinate System of 1927 (South Zone).

NOTE: The above description of the tract nominated for lease has been provided exclusively by the party nominating the tract for lease.

Maps depicting the nominated tract, containing the bearings, distances and coordinates of the nominated tract based on the Louisiana Coordinate System of 1927, North or South Zone, as applicable, are available for public inspection and review at the offices of the Louisiana State Mineral Board from 10:00 a.m. to 3:00 p.m. Monday - Friday.

Any mineral lease selected from the nominated tract and awarded by the Louisiana State Mineral Board shall be without warranty of any kind, either express, implied, or statutory, including, but not limited to, the implied warranties or merchantability and fitness for a particular purpose. Should the mineral lease awarded by the Louisiana State Mineral Board be subsequently modified, cancelled or abrogated due to the existence of conflicting leases, operating agreements, private claims or other existing or future obligations or conditions which may affect all or any portion of the leased tract, it shall not relieve the Lessee of the obligation to pay any bonus due thereon to the Louisiana State Mineral Board, nor shall the Louisiana State Mineral Board be obligated to refund any consideration paid by the Lessee prior to such modification, cancellation, or abrogation, including, but not limited to, bonuses, rents and royalties.

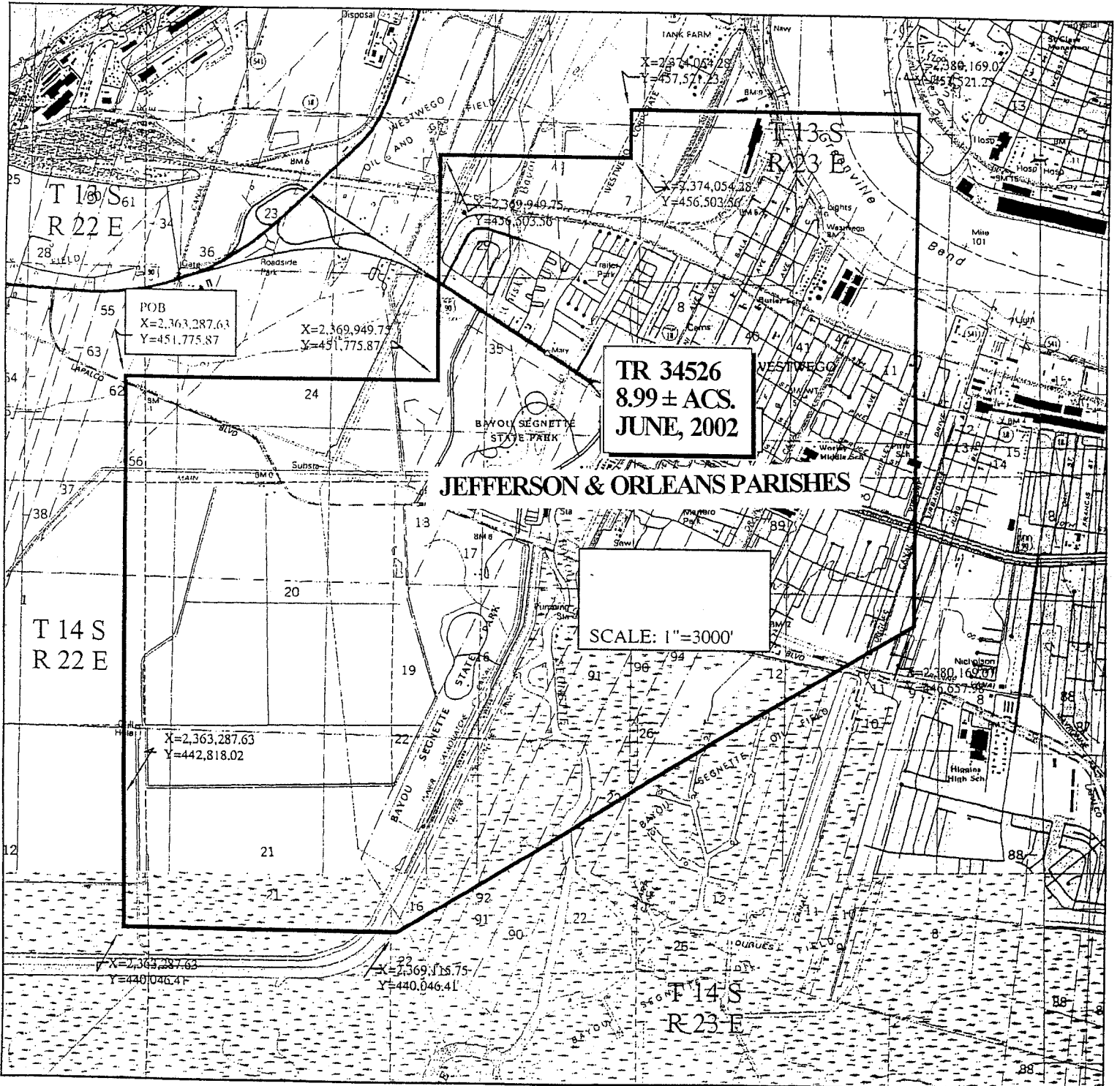
NOTE: The State of Louisiana does hereby reserve, and this lease shall be subject to, the imprescriptible right of surface use in the nature of a servitude in favor of the Department of Natural Resources, including its Offices and Commissions, for the sole purpose of implementing, constructing, servicing and maintaining approved coastal zone management

and/or restoration projects. Utilization of any and all rights derived under this lease by the mineral lessee, its agents, successors or assigns, shall not interfere with nor hinder the reasonable surface use by the Department of Natural Resources, its Offices or Commissions, as hereinabove reserved.

Applicant: Merlin Oil & Gas, Inc. to Agency and by Resolution from the West Jefferson Levee District authorizing the Mineral Board to act in its behalf.

*[Faint, illegible text, likely bleed-through from the reverse side of the page.]*

Bidder	Cash Payment	Price / Acre	Rental	Oil	Gas	Other



TR 34526  
8.99 ± ACS.  
JUNE, 2002

JEFFERSON & ORLEANS PARISHES

SCALE: 1"=3000'

POB  
X=2,363,287.63  
Y=451,775.87

X=2,369,949.75  
Y=451,775.87

X=2,363,287.63  
Y=442,818.02

X=2,363,287.63  
Y=440,046.41

X=2,369,949.75  
Y=440,046.41

X=2,374,054.28  
Y=457,571.25

X=2,374,054.28  
Y=456,503.66

X=2,388,169.07  
Y=445,521.27

X=2,380,169.07  
Y=440,057.97

T 14 S  
R 23 E

T 15 S  
R 22 E

T 14 S  
R 22 E

BAYOU SEGNETTE  
STATE PARK

R 23 E  
T 15 S

WESTWEGO

T 14 S  
R 23 E

**TRACT 34527 - STATE AGENCY - Jefferson and Orleans Parishes, Louisiana**

A certain tract of land belonging to and not under mineral lease from the Louisiana Department of Culture, Recreation & Tourism - Office of State Parks, on June 12, 2002, being more fully described as follows: Beginning at a point having Coordinates of X = 2,363,287.63 and Y = 451,775.87; thence East 6,662.12 feet to a point having Coordinates of X = 2,369,949.75 and Y = 451,775.87; thence North 4,727.69 feet to a point having Coordinates of X = 2,369,949.75 and Y = 456,503.56; thence West 4,104.53 feet to a point having Coordinates of X = 2,374,054.28 and Y = 456,503.56; thence North 1,017.67 feet to a point having Coordinates of X = 2,374,054.28 and Y = 457,521.23; thence East 6,114.79 feet to a point having coordinates of X = 2,380,169.07 and Y = 457,521.23; thence South 10,863.25 feet to a point having Coordinates of X = 2,380,169.07 and Y = 446,657.98; thence South 59 degrees 06 minutes 51 seconds West 12,879.78 feet to a point having Coordinates of X = 2,369,115.75 and Y = 440,046.41 thence West 5,828.12 feet to a point having Coordinates of X = 2,363,287.63 and Y = 440,046.41; thence North 11,729.46 feet to the point of beginning, excluding beds and bottoms of all navigable waters, containing approximately **209.17 acres**, as shown outlined on a plat on file in the Office of Mineral Resources, Department of Natural Resources, as provided by the applicant. All bearings, distances and coordinates are based on Louisiana Coordinate System of 1927 (South Zone).

NOTE: The above description of the tract nominated for lease has been provided exclusively by the party nominating the tract for lease.

Maps depicting the nominated tract, containing the bearings, distances and coordinates of the nominated tract based on the Louisiana Coordinate System of 1927, North or South Zone, as applicable, are available for public inspection and review at the offices of the Louisiana State Mineral Board from 10:00 a.m. to 3:00 p.m. Monday - Friday.

Any mineral lease selected from the nominated tract and awarded by the Louisiana State Mineral Board shall be without warranty of any kind, either express, implied, or statutory, including, but not limited to, the implied warranties or merchantability and fitness for a particular purpose. Should the mineral lease awarded by the Louisiana State Mineral Board be subsequently modified, cancelled or abrogated due to the existence of conflicting leases, operating agreements, private claims or other existing or future obligations or conditions which may affect all or any portion of the leased tract, it shall not relieve the Lessee of the obligation to pay any bonus due thereon to the Louisiana State Mineral Board, nor shall the Louisiana State Mineral Board be obligated to refund any consideration paid by the Lessee prior to such modification, cancellation, or abrogation, including, but not limited to, bonuses, rents and royalties.

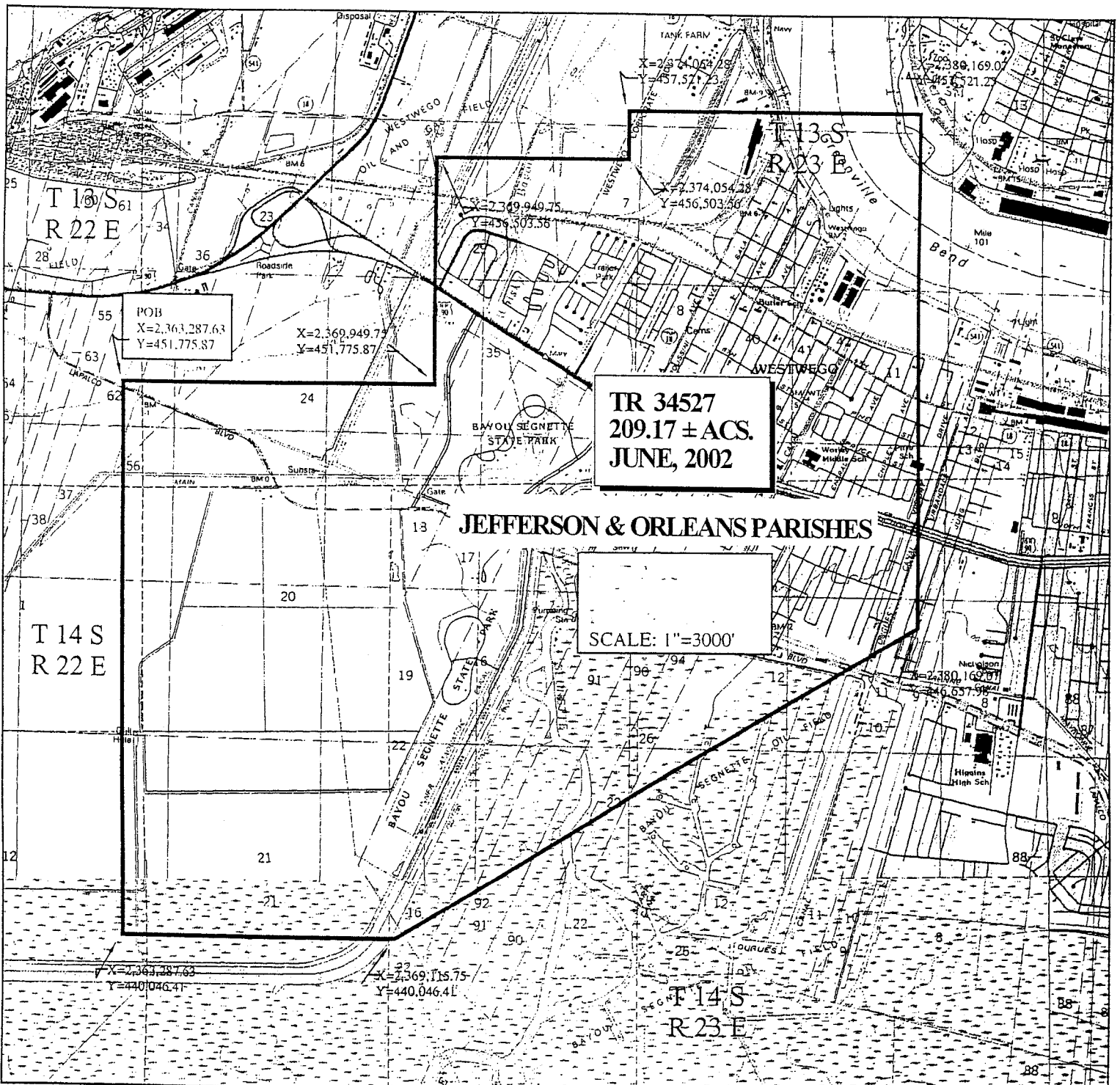
NOTE: "Neither the lessee nor those claiming by, through, or under it, shall ever have the right to use or enter upon the surface of the subject property in any manner whatsoever in the exercise of the servitude granted herein except as follows: Minerals shall be withdrawn or produced from the subject property by means of unitization through unit wells located on

other lands by directional drilling beneath the surface of the subject property by means of wells located on the other lands."

NOTE: The State of Louisiana does hereby reserve, and this lease shall be subject to, the imprescriptible right of surface use in the nature of a servitude in favor of the Department of Natural Resources, including its Offices and Commissions, for the sole purpose of implementing, constructing, servicing and maintaining approved coastal zone management and/or restoration projects. Utilization of any and all rights derived under this lease by the mineral lessee, its agents, successors or assigns, shall not interfere with nor hinder the reasonable surface use by the Department of Natural Resources, its Offices or Commissions, as hereinabove reserved.

Applicant: EKG Services to Agency and by Letter of Authorization from the Louisiana Department of Culture, Recreation & Tourism - Office of State Parks authorizing the Mineral Board to act in its behalf.

Bidder	Cash Payment	Price / Acre	Rental	Oil	Gas	Other



**TR 34527**  
**209.17 ± ACS.**  
**JUNE, 2002**

**JEFFERSON & ORLEANS PARISHES**

**SCALE: 1"=3000'**

POB  
X=2,363,287.63  
Y=451,775.87

X=2,369,949.75  
Y=451,775.87

X=2,374,054.28  
Y=457,571.23

X=2,374,054.28  
Y=456,303.56

X=2,349,949.75  
Y=456,303.56

X=2,363,287.63  
Y=440,046.41

X=2,369,115.75  
Y=440,046.41

X=2,380,169.07  
Y=450,577.98

X=2,380,169.07  
Y=451,775.87

T 16 S  
R 22 E

T 14 S  
R 22 E

T 13 S  
R 23 E

T 14 S  
R 23 E

**TRACT 34528 - STATE AGENCY - Jefferson and Orleans Parishes, Louisiana**

A certain tract of land belonging to and not under mineral lease from the Louisiana Department of Transportation and Development, on June 12, 2002, being more fully described as follows: Beginning at a point having Coordinates of X = 2,363,287.63 and Y = 451,775.87; thence East 6,662.12 feet to a point having Coordinates of X = 2,369,949.75 and Y = 451,775.87; thence North 4,727.69 feet to a point having Coordinates of X = 2,369,949.75 and Y = 456,503.56; thence West 4,104.53 feet to a point having Coordinates of X = 2,374,054.28 and Y = 456,503.56; thence North 1,017.67 feet to a point having Coordinates of X = 2,374,054.28 and Y = 457,521.23; thence East 6,114.79 feet to a point having Coordinates of X = 2,380,169.07 and Y = 457,521.23; thence South 10,863.25 feet to a point having Coordinates of X = 2,380,169.07 and Y = 446,657.98; thence South 59 degrees 06 minutes 51 seconds West 12,879.78 feet to a point X = 2,369,115.75 and Y = 440,046.41 thence West 5,828.12 feet to a point having Coordinates of X = 2,363,287.63 and Y = 440,046.41; thence North 11,729.46 feet to a point of beginning, excluding beds and bottoms of all navigable waters, containing approximately 105.69 acres, as shown outlined on a plat on file in the Office of Mineral Resources, Department of Natural Resources, as provided by the applicant. All bearings, distances and coordinates are based on Louisiana Coordinate System of 1927 (South Zone).

NOTE: The above description of the tract nominated for lease has been provided exclusively by the party nominating the tract for lease.

Maps depicting the nominated tract, containing the bearings, distances and coordinates of the nominated tract based on the Louisiana Coordinate System of 1927, North or South Zone, as applicable, are available for public inspection and review at the offices of the Louisiana State Mineral Board from 10:00 a.m. to 3:00 p.m. Monday - Friday.

Any mineral lease selected from the nominated tract and awarded by the Louisiana State Mineral Board shall be without warranty of any kind, either express, implied, or statutory, including, but not limited to, the implied warranties or merchantability and fitness for a particular purpose. Should the mineral lease awarded by the Louisiana State Mineral Board be subsequently modified, cancelled or abrogated due to the existence of conflicting leases, operating agreements, private claims or other existing or future obligations or conditions which may affect all or any portion of the leased tract, it shall not relieve the Lessee of the obligation to pay any bonus due thereon to the Louisiana State Mineral Board, nor shall the Louisiana State Mineral Board be obligated to refund any consideration paid by the Lessee prior to such modification, cancellation, or abrogation, including, but not limited to, bonuses, rents and royalties.

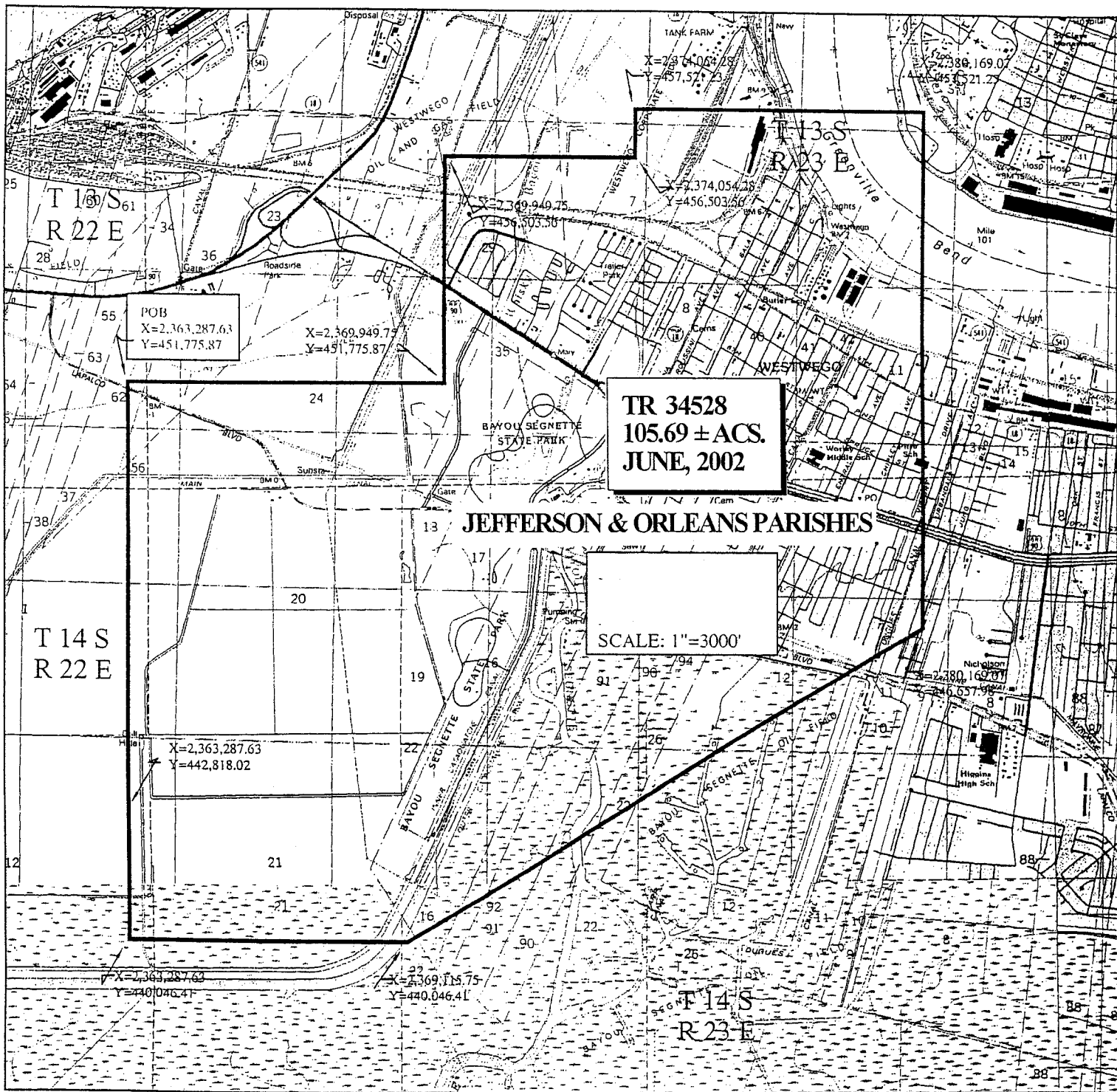
NOTE: The State of Louisiana does hereby reserve, and this lease shall be subject to, the imprescriptible right of surface use in the nature of a servitude in favor of the Department of Natural Resources, including its Offices and Commissions, for the sole purpose of implementing, constructing, servicing and maintaining approved coastal zone management



and/or restoration projects. Utilization of any and all rights derived under this lease by the mineral lessee, its agents, successors or assigns, shall not interfere with nor hinder the reasonable surface use by the Department of Natural Resources, its Offices or Commissions, as hereinabove reserved.

Applicant: EKG Services to Agency and by Letter of Authorization from the Louisiana Department of Transportation and Development authorizing the Mineral Board to act in its behalf.

Bidder	Cash Payment	Price / Acre	Rental	Oil	Gas	Other



**TR 34528**  
**105.69 ± ACS.**  
**JUNE, 2002**

**JEFFERSON & ORLEANS PARISHES**

**SCALE: 1"=3000'**

POB  
X=2,363,287.63  
Y=451,775.87

X=2,369,949.75  
Y=451,775.87

X=2,363,287.63  
Y=442,818.02

X=2,363,287.63  
Y=440,046.41

X=2,369,115.75  
Y=440,046.41

T 14 S  
R 23 E

**TRACT 34529 - STATE AGENCY - Jefferson and Orleans Parishes, Louisiana**

A certain tract of land belonging to and not under mineral lease from the Jefferson Parish School Board, on June 12, 2002, being more fully described as follows: Beginning at a point having Coordinates of X = 2,363,287.63 and Y = 451,775.87; thence East 6,662.12 feet to a point having Coordinates of X= 2,369,949.75 and Y = 451,775.87; thence North 4,727.69 feet to a point having Coordinates of X= 2,369,949.75 and Y = 456,503.56; thence West 4,104.53 feet to a point having Coordinates of X = 2,374,054.28 and Y = 456,503.56; thence North 1,017.67 feet to a point having Coordinates of X = 2,374,054.28 and Y = 457,521.23; thence East 6,114.79 feet to a point having Coordinates of X = 2,380,169.07 and Y = 457,521.23; thence South 10,863.25 feet to a point having Coordinates of X = 2,380,169.07 and Y = 446,657.98; thence South 59 degrees 06 minutes 51 seconds West 12,879.78 feet to a point X = 2,369,115.75 and Y = 440,046.41; thence West 5,828.12 feet to a point having Coordinates of X = 2,363,287.63 and Y = 440,046.41; thence North 11,729.46 feet to the point of beginning, excluding beds and bottoms of all navigable waters, containing approximately 25.8 acres, as shown outlined on a plat on file in the Office of Mineral Resources, Department of Natural Resources, as provided by the applicant. All bearings, distances and coordinates are based on Louisiana Coordinate System of 1927 (South Zone).

NOTE: The above description of the tract nominated for lease has been provided exclusively by the party nominating the tract for lease.

Maps depicting the nominated tract, containing the bearings, distances and coordinates of the nominated tract based on the Louisiana Coordinate System of 1927, North or South Zone, as applicable, are available for public inspection and review at the offices of the Louisiana State Mineral Board from 10:00 a.m. to 3:00 p.m. Monday - Friday.

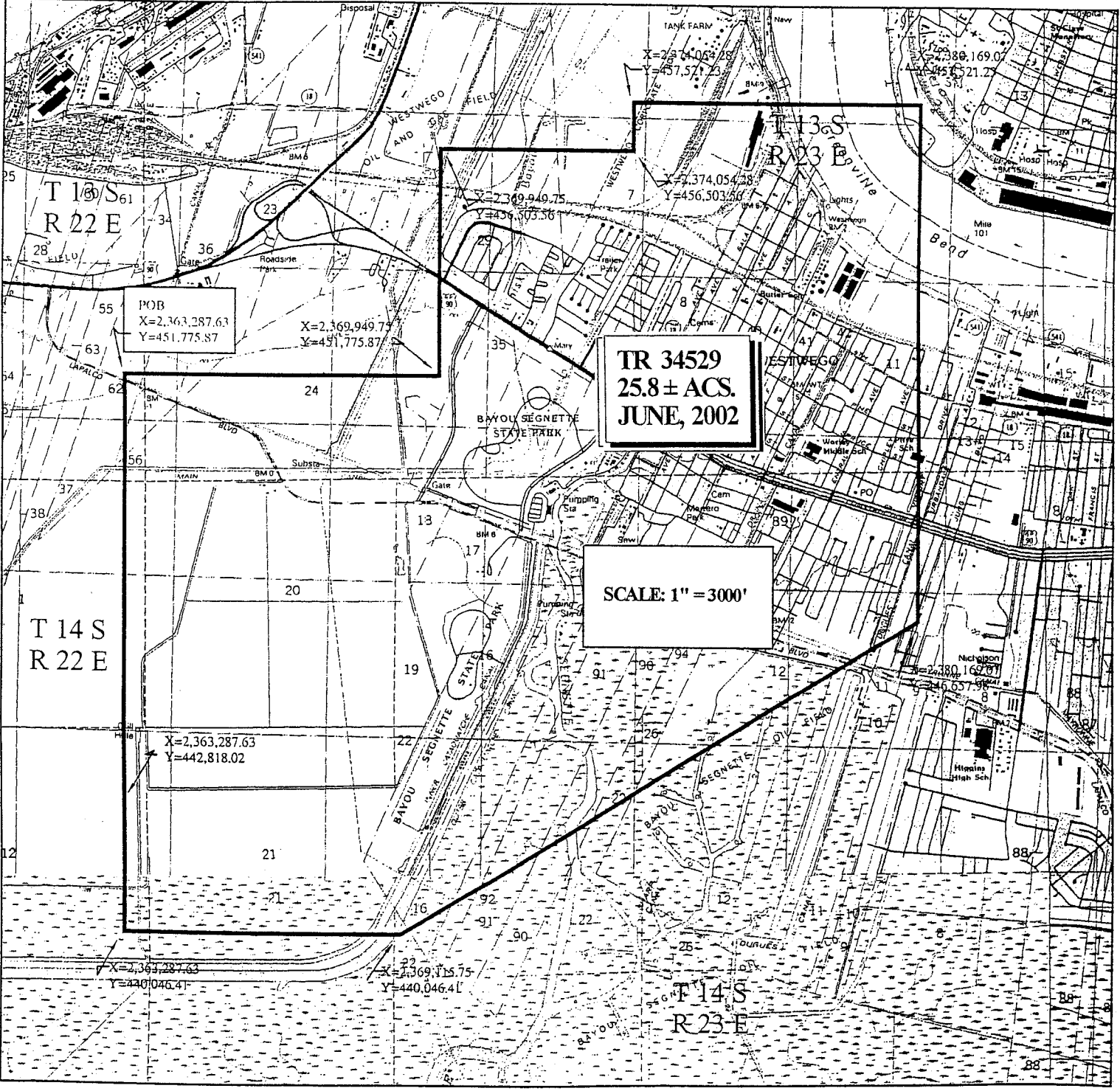
Any mineral lease selected from the nominated tract and awarded by the Louisiana State Mineral Board shall be without warranty of any kind, either express, implied, or statutory, including, but not limited to, the implied warranties or merchantability and fitness for a particular purpose. Should the mineral lease awarded by the Louisiana State Mineral Board be subsequently modified, cancelled or abrogated due to the existence of conflicting leases, operating agreements, private claims or other existing or future obligations or conditions which may affect all or any portion of the leased tract, it shall not relieve the Lessee of the obligation to pay any bonus due thereon to the Louisiana State Mineral Board, nor shall the Louisiana State Mineral Board be obligated to refund any consideration paid by the Lessee prior to such modification, cancellation, or abrogation, including, but not limited to, bonuses, rents and royalties.

NOTE: The lessee shall conduct its operations in such a manner as to reasonably minimize any interference with or disruption of lessor's use of the surface of the leased property for educational purposes, or its use by lessor in connection with the education of the children of Jefferson Parish, expressly prohibiting any direct drilling upon any land on which a school is situated.

NOTE: The State of Louisiana does hereby reserve, and this lease shall be subject to, the imprescriptible right of surface use in the nature of a servitude in favor of the Department of Natural Resources, including its Offices and Commissions, for the sole purpose of implementing, constructing, servicing and maintaining approved coastal zone management and/or restoration projects. Utilization of any and all rights derived under this lease by the mineral lessee, its agents, successors or assigns, shall not interfere with nor hinder the reasonable surface use by the Department of Natural Resources, its Offices or Commissions, as hereinabove reserved.

Applicant: EKG Services to Agency and by Resolution from the Jefferson Parish School Board authorizing the Mineral Board to act in its behalf.

Bidder	Cash Payment	Price / Acre	Rental	Oil	Gas	Other



**TR 34529**  
**25.8 ± ACS.**  
**JUNE, 2002**

**SCALE: 1" = 3000'**

POB  
 X=2,363,287.63  
 Y=451,775.87

X=2,369,949.75  
 Y=451,775.87

X=2,363,287.63  
 Y=442,818.02

X=2,369,115.75  
 Y=440,046.41

X=2,363,287.63  
 Y=440,046.41

**JEFFERSON & ORLEANS PARISHES**