

TRACT 34516 - STATE AGENCY - Jefferson and St. Charles Parishes, Louisiana

A certain tract of land belonging to and not under mineral lease from the Louisiana Department of Transportation and Development, on June 12, 2002, being more fully described as follows: Beginning at a point having Coordinates of X = 2,331,643.73 and Y = 467,975.82; thence East 6,680.46 feet to a point having Coordinates of X = 2,338,324.19 and Y = 467,975.82; thence North 2,763.58 feet to a point having Coordinates of X = 2,338,324.19 and Y = 470,739.40; thence East 10,048.14 feet to a point having Coordinates of X = 2,348,372.33 and Y = 470,739.40; thence South 17,100.78 feet to a point having Coordinates of X = 2,348,372.33 and Y = 453,638.62; thence West 16,728.60 feet to a point having Coordinates of X = 2,331,643.73 and Y = 453,638.62; thence North 14,337.20 feet to the point of beginning, excluding beds and bottoms of all navigable waters, containing approximately 29.04 acres, as shown outlined on a plat on file in the Office of Mineral Resources, Department of Natural Resources, as provided by the applicant. All bearings, distances and coordinates are based on Louisiana Coordinate System of 1927 (South Zone).

NOTE: The above description of the tract nominated for lease has been provided exclusively by the party nominating the tract for lease.

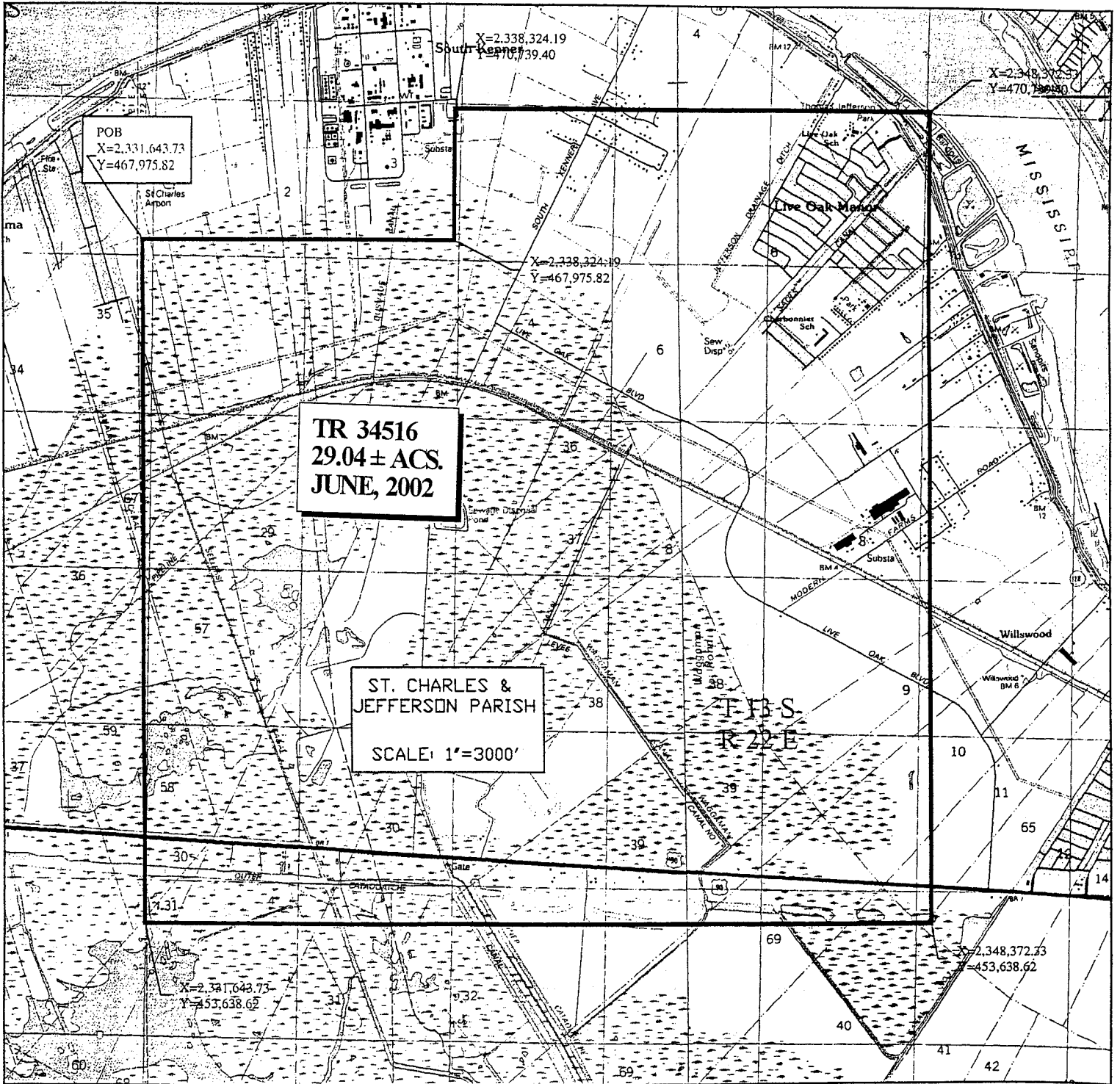
Maps depicting the nominated tract, containing the bearings, distances and coordinates of the nominated tract based on the Louisiana Coordinate System of 1927, North or South Zone, as applicable, are available for public inspection and review at the offices of the Louisiana State Mineral Board from 10:00 a.m. to 3:00 p.m. Monday - Friday.

Any mineral lease selected from the nominated tract and awarded by the Louisiana State Mineral Board shall be without warranty of any kind, either express, implied, or statutory, including, but not limited to, the implied warranties or merchantability and fitness for a particular purpose. Should the mineral lease awarded by the Louisiana State Mineral Board be subsequently modified, cancelled or abrogated due to the existence of conflicting leases, operating agreements, private claims or other existing or future obligations or conditions which may affect all or any portion of the leased tract, it shall not relieve the Lessee of the obligation to pay any bonus due thereon to the Louisiana State Mineral Board, nor shall the Louisiana State Mineral Board be obligated to refund any consideration paid by the Lessee prior to such modification, cancellation, or abrogation, including, but not limited to, bonuses, rents and royalties.

NOTE: The State of Louisiana does hereby reserve, and this lease shall be subject to, the imprescriptible right of surface use in the nature of a servitude in favor of the Department of Natural Resources, including its Offices and Commissions, for the sole purpose of implementing, constructing, servicing and maintaining approved coastal zone management and/or restoration projects. Utilization of any and all rights derived under this lease by the mineral lessee, its agents, successors or assigns, shall not interfere with nor hinder the reasonable surface use by the Department of Natural Resources, its Offices or Commissions, as hereinabove reserved.

Applicant: EKG Services to Agency and by Letter of Authorization from the Louisiana Department of Transportation and Development authorizing the Mineral Board to act in its behalf.

Bidder	Cash Payment	Price / Acre	Rental	Oil	Gas	Other



POB
 X=2,331,643.73
 Y=467,975.82

X=2,338,324.19
 Y=470,739.40

X=2,348,372.33
 Y=470,739.40

X=2,338,324.19
 Y=467,975.82

TR 34516
29.04 ± ACS.
JUNE, 2002

ST. CHARLES &
JEFFERSON PARISH
SCALE: 1"=3000'

X=2,331,643.73
 Y=453,638.62

X=2,348,372.33
 Y=453,638.62

TRACT 34517 - STATE AGENCY - Jefferson and St. Charles Parishes, Louisiana

A certain tract of land belonging to and not under mineral lease from the Jefferson Parish School Board, on June 12, 2002, being more fully described as follows: Beginning at a point having Coordinates of X = 2,331,643.73 and Y = 467,975.82; thence East 6,680.46 feet to a point having Coordinates of X = 2,338,324.19 and Y = 467,975.82; thence North 2,763.58 feet to a point having Coordinates of X = 2,338,324.19 and Y = 470,739.40; thence East 10,048.14 feet to a point having Coordinates of X = 2,348,372.33 and Y = 470,739.40; thence South 17,100.78 feet to a point having Coordinates of X = 2,348,372.33 and Y = 453,638.62; thence West 16,728.60 feet to a point having Coordinates of X = 2,331,643.73 and Y = 453,638.62; thence North 14,337.20 feet to the point of beginning, excluding beds and bottoms of all navigable waters, containing approximately 11.41 acres, as shown outlined on a plat on file in the Office of Mineral Resources, Department of Natural Resources, as provided by the applicant. All bearings, distances and coordinates are based on Louisiana Coordinate System of 1927 (South Zone).

NOTE: The above description of the tract nominated for lease has been provided exclusively by the party nominating the tract for lease.

Maps depicting the nominated tract, containing the bearings, distances and coordinates of the nominated tract based on the Louisiana Coordinate System of 1927, North or South Zone, as applicable, are available for public inspection and review at the offices of the Louisiana State Mineral Board from 10:00 a.m. to 3:00 p.m. Monday - Friday.

Any mineral lease selected from the nominated tract and awarded by the Louisiana State Mineral Board shall be without warranty of any kind, either express, implied, or statutory, including, but not limited to, the implied warranties or merchantability and fitness for a particular purpose. Should the mineral lease awarded by the Louisiana State Mineral Board be subsequently modified, cancelled or abrogated due to the existence of conflicting leases, operating agreements, private claims or other existing or future obligations or conditions which may affect all or any portion of the leased tract, it shall not relieve the Lessee of the obligation to pay any bonus due thereon to the Louisiana State Mineral Board, nor shall the Louisiana State Mineral Board be obligated to refund any consideration paid by the Lessee prior to such modification, cancellation, or abrogation, including, but not limited to, bonuses, rents and royalties.

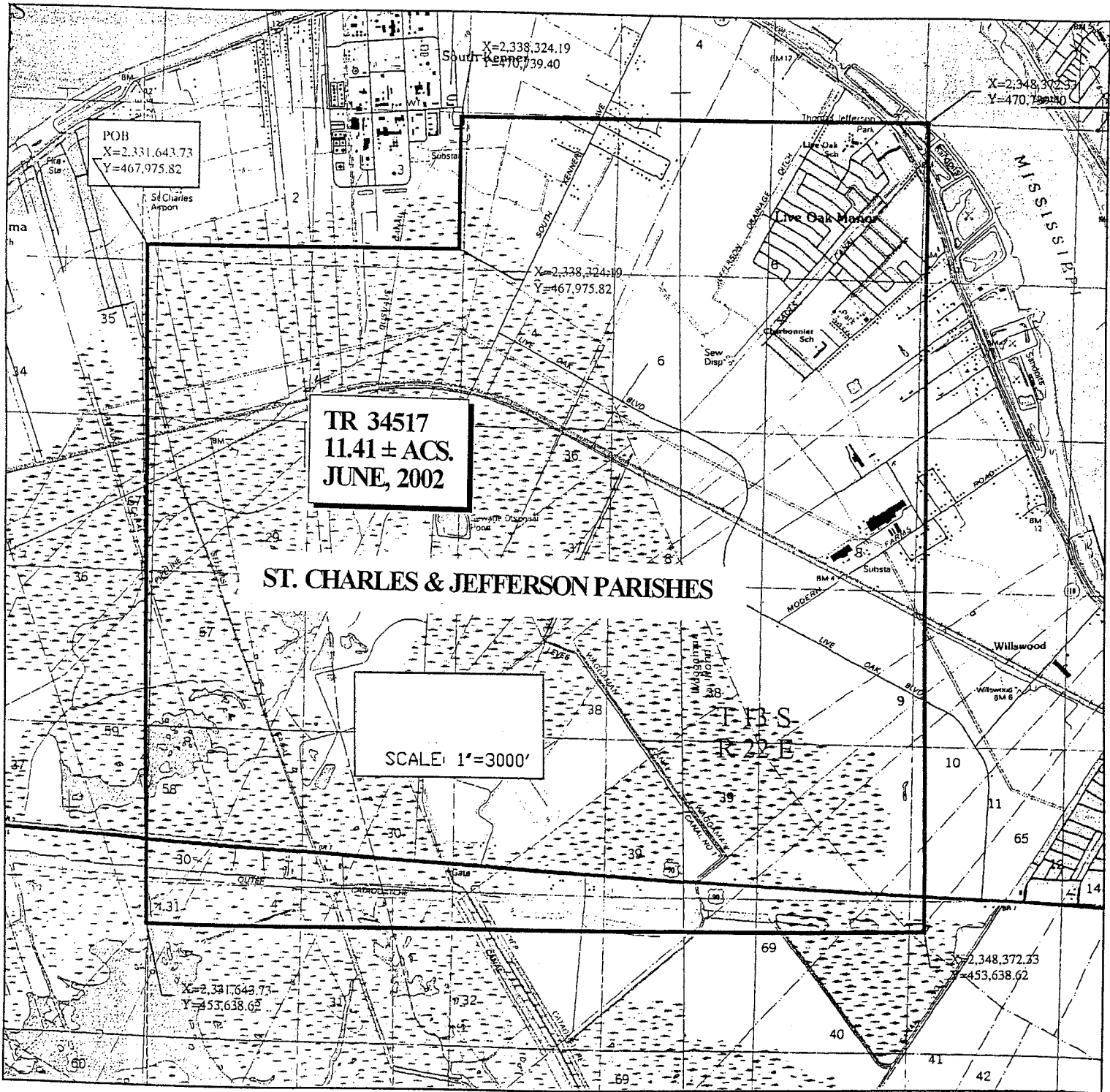
NOTE: The lessee shall conduct its operations in such a manner as to reasonably minimize any interference with or disruption of lessor's use of the surface of the leased property for educational purposes, or its use by lessor in connection with the education of the children of Jefferson Parish, expressly prohibiting any direct drilling upon any land on which a school is situated.

NOTE: The State of Louisiana does hereby reserve, and this lease shall be subject to, the imprescriptible right of surface use in the nature of a servitude in favor of the Department of Natural Resources, including its

Offices and Commissions, for the sole purpose of implementing, constructing, servicing and maintaining approved coastal zone management and/or restoration projects. Utilization of any and all rights derived under this lease by the mineral lessee, its agents, successors or assigns, shall not interfere with nor hinder the reasonable surface use by the Department of Natural Resources, its Offices or Commissions, as hereinabove reserved.

Applicant: EKG Services to Agency and by Resolution from the Jefferson Parish School Board authorizing the Mineral Board to act in its behalf.

Bidder	Cash Payment	Price / Acre	Rental	Oil	Gas	Other



POB
X=2,331,643.73
Y=467,975.82

X=2,338,324.19
Y=467,975.82

X=2,348,372.33
Y=470,799.40

**TR 34517
11.41 ± ACS.
JUNE, 2002**

ST. CHARLES & JEFFERSON PARISHES

SCALE: 1"=3000'

X=2,341,643.73
Y=453,638.62

X=2,348,372.33
Y=453,638.62

TRACT 34518 - STATE AGENCY - Jefferson Parish, Louisiana

A certain tract of land belonging to and not under mineral lease from the Jefferson Parish School Board, on June 12, 2002, being more fully described as follows: Beginning at a point having Coordinates of X = 2,343,633.81 and Y = 477,074.30; thence East 10,651.69 feet to a point having Coordinates of X = 2,354,285.50 and Y = 477,074.30; thence South 8,873.27 feet to a point having Coordinates of X = 2,354,285.50 and Y = 468,201.03; thence East 7,132.49 feet to point having Coordinates of X = 2,361,417.99 and Y = 468,201.03; thence South 11,697.47 feet to a point having Coordinates of X = 2,361,417.99 and Y = 456,503.56; thence West 13,045.44 feet to point having Coordinates of X = 2,348,372.33 and Y = 456,503.56; thence North 14,235.84 feet to the point having Coordinates of X = 2,348,372.33 and Y = 470,739.40; thence West 4,738.52 feet to point having Coordinates of X = 2,343,633.81 and Y = 470,739.40; thence North 6,334.90 to a point of beginning, excluding beds and bottoms of all navigable waters, containing approximately 43.08 acres, as shown outlined on a plat on file in the Office of Mineral Resources, Department of Natural Resources, as provided by the applicant. All bearings, distances and coordinates are based on Louisiana Coordinate System of 1927 (South Zone).

NOTE: The above description of the tract nominated for lease has been provided exclusively by the party nominating the tract for lease.

Maps depicting the nominated tract, containing the bearings, distances and coordinates of the nominated tract based on the Louisiana Coordinate System of 1927, North or South Zone, as applicable, are available for public inspection and review at the offices of the Louisiana State Mineral Board from 10:00 a.m. to 3:00 p.m. Monday - Friday.

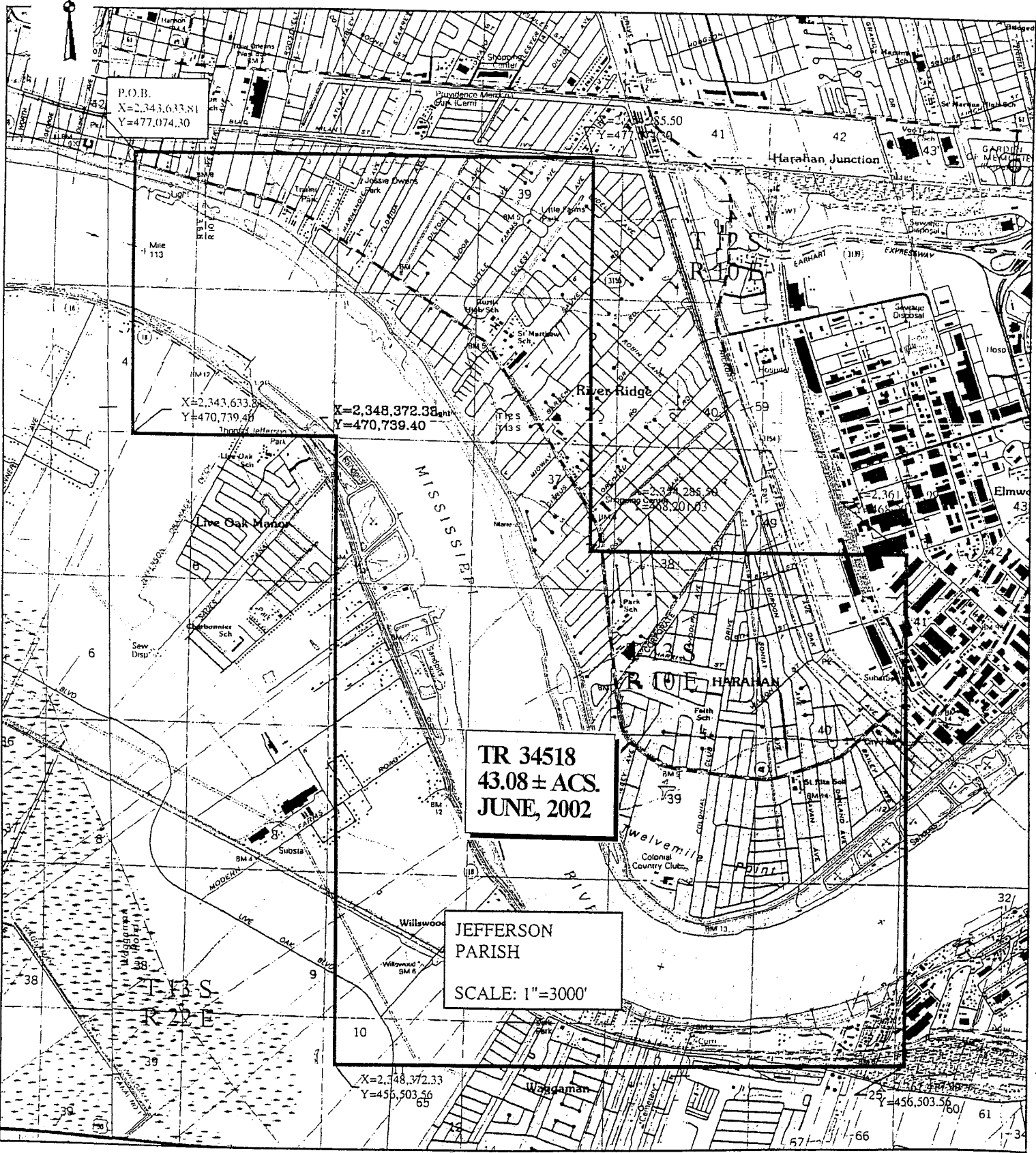
Any mineral lease selected from the nominated tract and awarded by the Louisiana State Mineral Board shall be without warranty of any kind, either express, implied, or statutory, including, but not limited to, the implied warranties or merchantability and fitness for a particular purpose. Should the mineral lease awarded by the Louisiana State Mineral Board be subsequently modified, cancelled or abrogated due to the existence of conflicting leases, operating agreements, private claims or other existing or future obligations or conditions which may affect all or any portion of the leased tract, it shall not relieve the Lessee of the obligation to pay any bonus due thereon to the Louisiana State Mineral Board, nor shall the Louisiana State Mineral Board be obligated to refund any consideration paid by the Lessee prior to such modification, cancellation, or abrogation, including, but not limited to, bonuses, rents and royalties.

NOTE: The lessee shall conduct its operations in such a manner as to reasonably minimize any interference with or disruption of lessor's use of the surface of the leased property for educational purposes, or its use by lessor in connection with the education of the children of Jefferson Parish, expressly prohibiting any direct drilling upon any land on which a school site is situated.

NOTE: The State of Louisiana does hereby reserve, and this lease shall be subject to, the imprescriptible right of surface use in the nature of a servitude in favor of the Department of Natural Resources, including its Offices and Commissions, for the sole purpose of implementing, constructing, servicing and maintaining approved coastal zone management and/or restoration projects. Utilization of any and all rights derived under this lease by the mineral lessee, its agents, successors or assigns, shall not interfere with nor hinder the reasonable surface use by the Department of Natural Resources, its Offices or Commissions, as hereinabove reserved.

Applicant: EKG Services to Agency and by Resolution from the Jefferson Parish School Board authorizing the Mineral Board to act in its behalf.

Bidder	Cash Payment	Price / Acre	Rental	Oil	Gas	Other



P.O.B.
X=2,343,633.81
Y=477,074.30

X=2,343,633.81
Y=470,739.40

X=2,348,372.33
Y=470,739.40

X=2,344,285.50
Y=478,900.03

X=2,361,000.00
Y=478,900.03

TR 34518
43.08 ± ACS.
JUNE, 2002

JEFFERSON
PARISH
SCALE: 1"=3000'

X=2,348,372.33
Y=455,503.56

X=2,361,000.00
Y=456,503.56

MISSISSIPPI RIVER

ROUE HARAHAN

Twelvemile
Colonial
Country Club

Waggaman

Harahan Junction

River Ridge

Live Oak Manor

MISSISSIPPI RIVER

Sew
Distri

Willwood

MISSISSIPPI RIVER

61

66

67

38

39

34

35

10

9

8

7

6

5

4

3

2

11

12

13

14

15

16

17

18

19

20

21

22

23

24

25

26

27

28

29

30

31

32

33

34

35

36

37

38

39

40

41

42

43

44

45

46

47

48

49

50

51

52

53

54

55

56

57

58

59

60

61

62

63

64

65

66

67

68

69

70

71

72

73

74

75

76

77

78

79

80

81

82

83

84

85

86

87

88

89

90

91

92

93

94

95

96

97

98

99

100

101

102

103

104

105

106

107

108

109

110

111

112

113

114

115

116

117

118

119

120

121

122

123

124

125

126

127

128

129

130

131

132

133

134

135

136

137

138

139

140

141

142

143

144

145

146

147

148

149

150

151

152

153

154

155

156

157

158

159

160

161

162

163

164

165

166

167

168

169

170

171

172

173

174

175

176

177

178

179

180

181

182

183

184

185

186

187

188

189

190

191

192

193

194

195

196

197

198

199

200

201

202

203

204

205

206

207

208

209

210

211

212

213

214

215

216

217

218

219

220

221

222

223

224

225

226

227

228

229

230

231

232

233

234

235

236

237

238

239

240

241

242

243

244

245

246

247

248

249

250

251

252

253

254

255

256

257

258

259

260

261

262

263

264

265

266

267

268

269

270

271

272

273

274

275

276

277

278

279

280

281

282

283

284

285

286

287

288

289

290

291

292

293

294

295

296

297

298

<

TRACT 34519 - STATE AGENCY - Jefferson Parish, Louisiana

A certain tract of land belonging to and not under mineral lease from the Louisiana Department of Transportation and Development, on June 12, 2002, being more fully described as follows: Beginning at a point having Coordinates of X = 2,343,633.81 and Y = 477,074.30; thence East 10,651.69 feet to a point having Coordinates of X = 2,354,285.50 and Y = 477,074.30; thence South 8,873.27 feet to a point having Coordinates of X = 2,354,285.50 and Y = 468,201.03; thence East 7,132.49 feet to point having Coordinates of X = 2,361,417.99 and Y = 468,201.03; thence South 11,697.47 feet to a point having Coordinates of X = 2,361,417.99 and Y = 456,503.56; thence West 13,045.44 feet to point having Coordinates of X = 2,348,372.55 and Y = 456,503.56; thence North 00 degrees 00 minutes 03.2 seconds West 14,235.84 feet to the point having Coordinates of X = 2,348,372.33 and Y = 470,739.40; thence West 4,738.52 feet to point having Coordinates of X = 2,343,633.81 and Y = 470,739.40; thence North 6,334.90 to a point of beginning, excluding beds and bottoms of all navigable waters, containing approximately 10.23 acres, as shown outlined on a plat on file in the Office of Mineral Resources, Department of Natural Resources, as provided by the applicant. All bearings, distances and coordinates are based on Louisiana Coordinate System of 1927 (South Zone).

NOTE: The above description of the tract nominated for lease has been provided exclusively by the party nominating the tract for lease.

Maps depicting the nominated tract, containing the bearings, distances and coordinates of the nominated tract based on the Louisiana Coordinate System of 1927, North or South Zone, as applicable, are available for public inspection and review at the offices of the Louisiana State Mineral Board from 10:00 a.m. to 3:00 p.m. Monday - Friday.

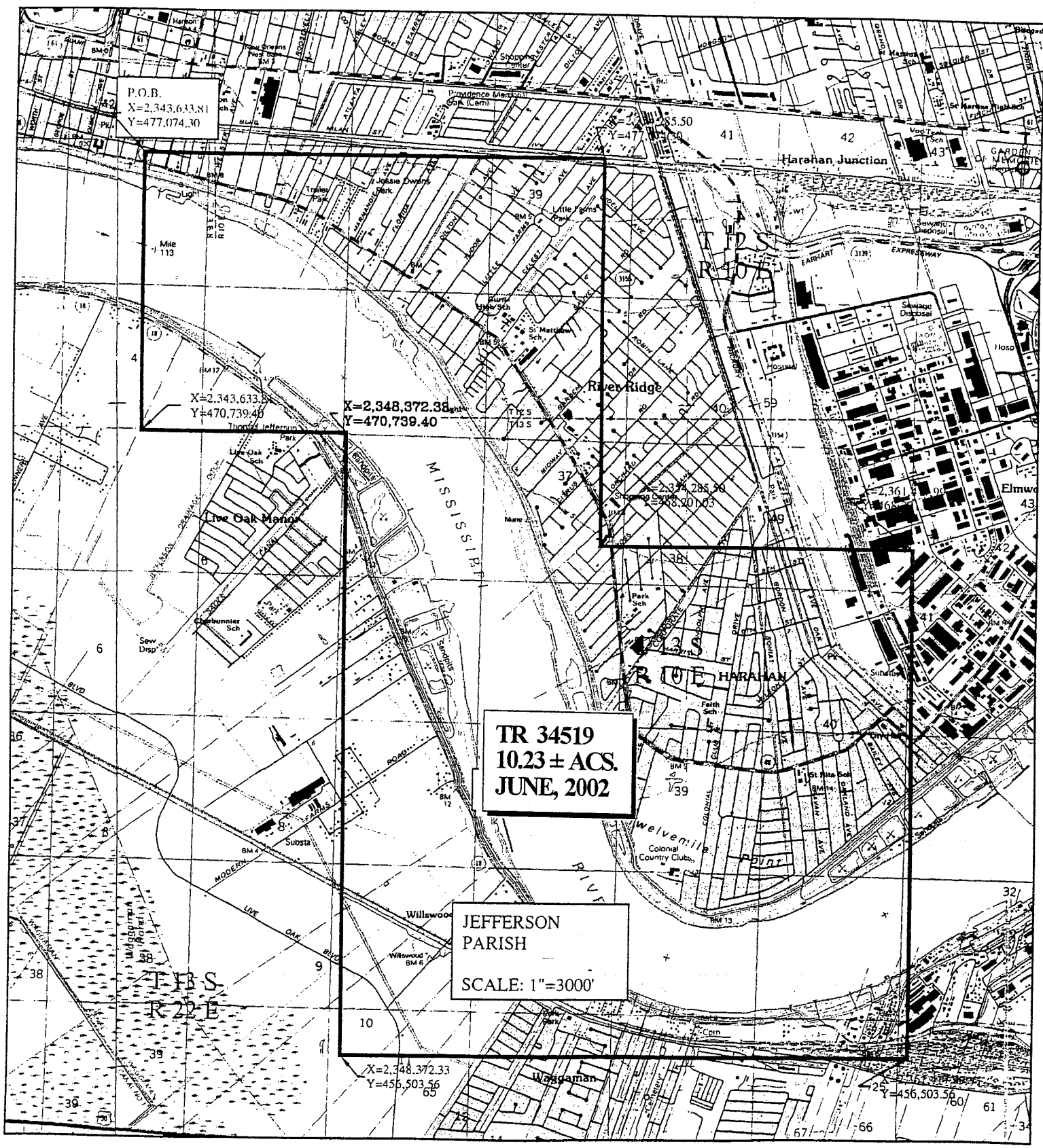
Any mineral lease selected from the nominated tract and awarded by the Louisiana State Mineral Board shall be without warranty of any kind, either express, implied, or statutory, including, but not limited to, the implied warranties or merchantability and fitness for a particular purpose. Should the mineral lease awarded by the Louisiana State Mineral Board be subsequently modified, cancelled or abrogated due to the existence of conflicting leases, operating agreements, private claims or other existing of future obligations or conditions which may affect all or any portion of the leased tract, it shall not relieve the Lessee of the obligation to pay any bonus due thereon to the Louisiana State Mineral Board, nor shall the Louisiana State Mineral Board be obligated to refund any consideration paid by the Lessee prior to such modification, cancellation, or abrogation, including, but not limited to, bonuses, rents and royalties.

NOTE: The State of Louisiana does hereby reserve, and this lease shall be subject to, the imprescriptible right of surface use in the nature of a servitude in favor of the Department of Natural Resources, including its Offices and Commissions, for the sole purpose of implementing, constructing, servicing and maintaining approved coastal zone management and/or restoration projects. Utilization of any and all rights derived under this lease by the mineral lessee, its agents, successors or assigns,

shall not interfere with nor hinder the reasonable surface use by the Department of Natural Resources, its Offices or Commissions, as hereinabove reserved.

Applicant: EKG Services to Agency and by Letter of Authorization from the Louisiana Department of Transportation and Development authorizing the Mineral Board to act in its behalf.

Bidder	Cash Payment	Price / Acre	Rental	Oil	Gas	Other



P.O.B.
X=2,343,633.81
Y=477,074.30

X=2,343,633.81
Y=470,739.40

X=2,348,372.33
Y=470,739.40

X=2,374,285.50
Y=478,201.03

TR 34519
10.23 ± ACS.
JUNE, 2002

JEFFERSON
PARISH
SCALE: 1"=3000'

X=2,348,372.33
Y=456,503.56

X=2,374,285.50
Y=456,503.56

TRACT 34520 - STATE AGENCY - Jefferson Parish, Louisiana

A certain tract of land belonging to and not under mineral lease from the Louisiana Department of Transportation and Development, on June 12, 2002, being more fully described as follows: Beginning at a point having Coordinates of X = 2,348,372.33 and Y = 456,503.56; thence East 14,915.30 feet to a point having Coordinates of X = 2,363,287.63 and Y = 456,503.56; thence South 13,685.54 feet to a point having Coordinates of X = 2,363,287.63 and Y = 442,818.02; thence West 14,915.30 feet to a point having Coordinates of X = 2,348,372.33 and Y = 442,818.02; thence North 13,685.54 feet to the point of beginning, excluding beds and bottoms of all navigable waters, containing approximately 26.9 acres, as shown outlined on a plat on file in the Office of Mineral Resources, Department of Natural Resources, as provided by the applicant. All bearings, distances and coordinates are based on Louisiana Coordinate System of 1927 (South Zone).

NOTE: The above description of the tract nominated for lease has been provided exclusively by the party nominating the tract for lease.

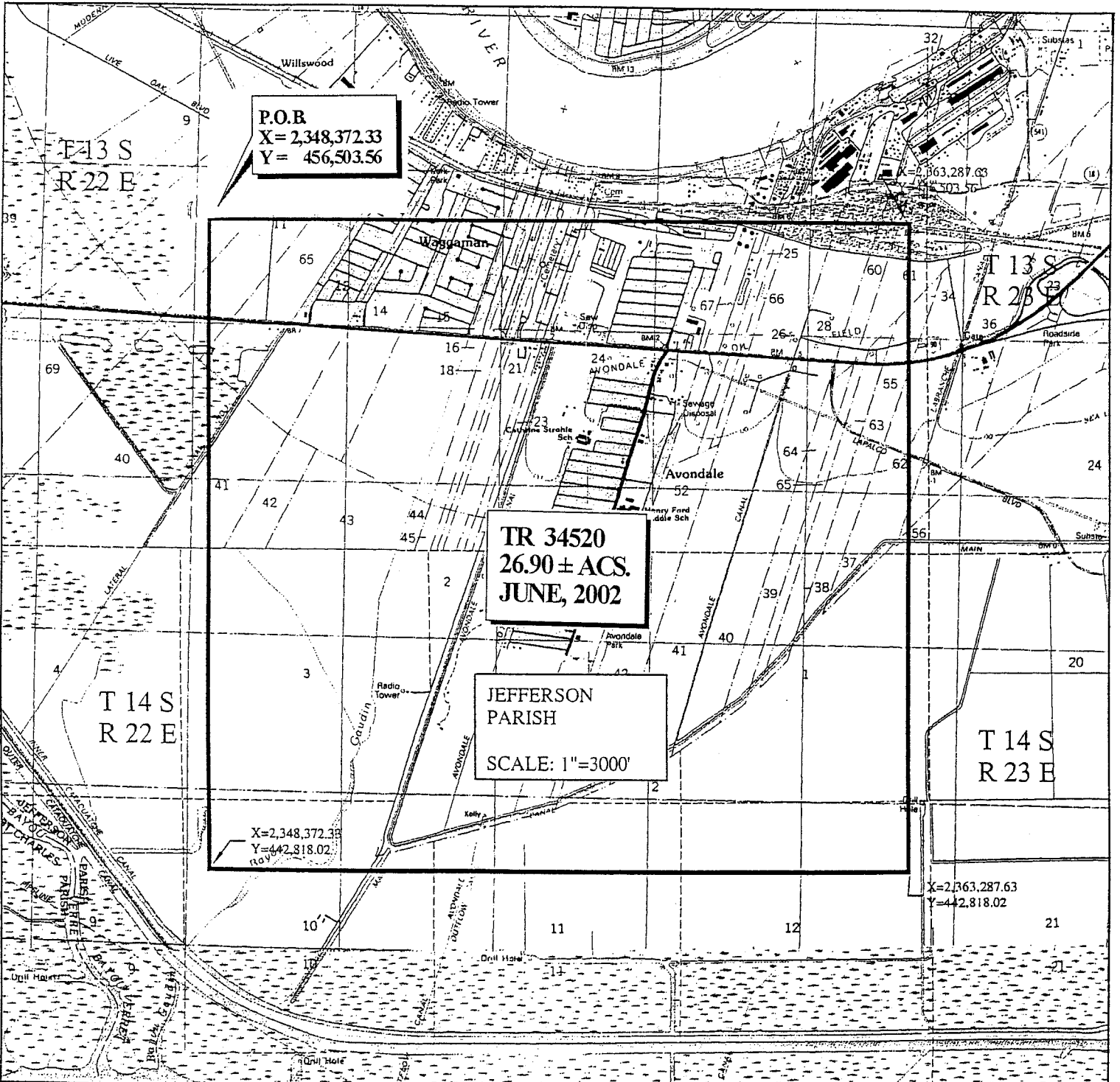
Maps depicting the nominated tract, containing the bearings, distances and coordinates of the nominated tract based on the Louisiana Coordinate System of 1927, North or South Zone, as applicable, are available for public inspection and review at the offices of the Louisiana State Mineral Board from 10:00 a.m. to 3:00 p.m. Monday - Friday.

Any mineral lease selected from the nominated tract and awarded by the Louisiana State Mineral Board shall be without warranty of any kind, either express, implied, or statutory, including, but not limited to, the implied warranties or merchantability and fitness for a particular purpose. Should the mineral lease awarded by the Louisiana State Mineral Board be subsequently modified, cancelled or abrogated due to the existence of conflicting leases, operating agreements, private claims or other existing or future obligations or conditions which may affect all or any portion of the leased tract, it shall not relieve the Lessee of the obligation to pay any bonus due thereon to the Louisiana State Mineral Board, nor shall the Louisiana State Mineral Board be obligated to refund any consideration paid by the Lessee prior to such modification, cancellation, or abrogation, including, but not limited to, bonuses, rents and royalties.

NOTE: The State of Louisiana does hereby reserve, and this lease shall be subject to, the imprescriptible right of surface use in the nature of a servitude in favor of the Department of Natural Resources, including its Offices and Commissions, for the sole purpose of implementing, constructing, servicing and maintaining approved coastal zone management and/or restoration projects. Utilization of any and all rights derived under this lease by the mineral lessee, its agents, successors or assigns, shall not interfere with nor hinder the reasonable surface use by the Department of Natural Resources, its Offices or Commissions, as hereinabove reserved.

Applicant: EKG Services to Agency and by Letter of Authorization from the Louisiana Department of Transportation and Development authorizing the Mineral Board to act in its behalf.

Bidder	Cash Payment	Price / Acre	Rental	Oil	Gas	Other



P.O.B
X = 2,348,372.33
Y = 456,503.56

TR 34520
26.90 ± ACS.
JUNE, 2002

JEFFERSON
PARISH
SCALE: 1"=3000'

X=2,348,372.33
Y=442,818.02

X=2,363,287.63
Y=442,818.02

T 13 S
R 22 E

T 13 S
R 23 E

T 14 S
R 22 E

T 14 S
R 23 E

TRACT 34521 - STATE AGENCY - Jefferson Parish, Louisiana

A certain tract of land belonging to and not under mineral lease from the Jefferson Parish School Board, on June 12, 2002, being more fully described as follows: Beginning at a point having Coordinates of X = 2,348,372.33 and Y = 456,503.56; thence East 14,915.30 feet to a point having Coordinates of X = 2,363,287.63 and Y = 456,503.56; thence South 13,685.54 feet to a point having Coordinates of X = 2,363,287.63 and Y = 442,818.02; thence West 14,915.30 feet to a point having Coordinates of X = 2,348,372.33 and Y = 442,818.02; thence North 13,685.54 feet to the point of beginning, excluding beds and bottoms of all navigable waters, containing approximately 15.84 acres, as shown outlined on a plat on file in the Office of Mineral Resources, Department of Natural Resources, as provided by the applicant. All bearings, distances and coordinates are based on Louisiana Coordinate System of 1927 (South Zone).

NOTE: The above description of the tract nominated for lease has been provided exclusively by the party nominating the tract for lease.

Maps depicting the nominated tract, containing the bearings, distances and coordinates of the nominated tract based on the Louisiana Coordinate System of 1927, North or South Zone, as applicable, are available for public inspection and review at the offices of the Louisiana State Mineral Board from 10:00 a.m. to 3:00 p.m. Monday - Friday.

Any mineral lease selected from the nominated tract and awarded by the Louisiana State Mineral Board shall be without warranty of any kind, either express, implied, or statutory, including, but not limited to, the implied warranties or merchantability and fitness for a particular purpose. Should the mineral lease awarded by the Louisiana State Mineral Board be subsequently modified, cancelled or abrogated due to the existence of conflicting leases, operating agreements, private claims or other existing or future obligations or conditions which may affect all or any portion of the leased tract, it shall not relieve the Lessee of the obligation to pay any bonus due thereon to the Louisiana State Mineral Board, nor shall the Louisiana State Mineral Board be obligated to refund any consideration paid by the Lessee prior to such modification, cancellation, or abrogation, including, but not limited to, bonuses, rents and royalties.

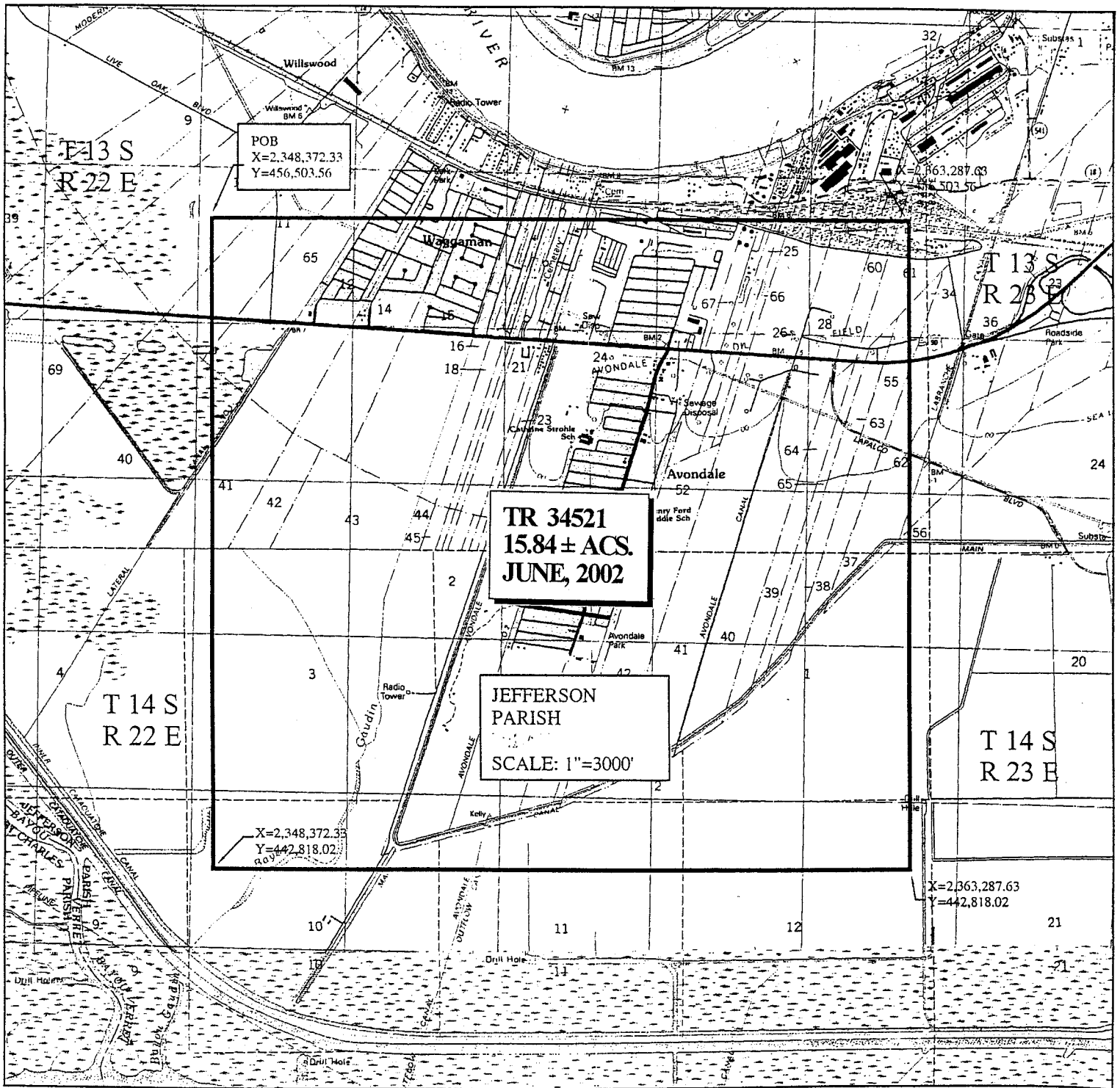
NOTE: The lessee shall conduct its operations in such a manner as to reasonably minimize any interference with or disruption of lessor's use of the surface of the leased property for educational purposes, or its use by lessor in connection with education of the children of Jefferson Parish, expressly prohibiting any direct drilling upon any land on which a school site is situated.

NOTE: The State of Louisiana does hereby reserve, and this lease shall be subject to, the imprescriptible right of surface use in the nature of a servitude in favor of the Department of Natural Resources, including its Offices and Commissions, for the sole purpose of implementing, constructing, servicing and maintaining approved coastal zone management and/or restoration projects. Utilization of any and all rights derived

under this lease by the mineral lessee, its agents, successors or assigns, shall not interfere with nor hinder the reasonable surface use by the Department of Natural Resources, its Offices or Commissions, as hereinabove reserved.

Applicant: EKG Services to Agency and by Resolution from the Jefferson Parish School Board authorizing the Mineral Board to act in its behalf.

Bidder	Cash Payment	Price / Acre	Rental	Oil	Gas	Other



POB
X=2,348,372.33
Y=456,503.56

TR 34521
15.84 ± ACS.
JUNE, 2002

JEFFERSON
PARISH
SCALE: 1"=3000'

X=2,348,372.33
Y=442,818.02

X=2,363,287.63
Y=442,818.02

T13 S
R22 E

T13 S
R23 E

T14 S
R22 E

T14 S
R23 E

TRACT 34522 - STATE AGENCY - Jefferson Parish, Louisiana

A certain tract of land belonging to and not under mineral lease from the Louisiana Department of Public Safety and Corrections, on June 12, 2002, being more fully described as follows: Beginning at a point having Coordinates of X = 2,361,417.99 and Y = 468,201.03; thence East 12,636.29 feet to a point having Coordinates of X = 2,374,054.28 and Y = 468,201.03; thence South 11,697.47 feet to a point having Coordinates of X = 2,374,054.28 and Y = 456,503.56; thence West 4,104.53 feet to a point having Coordinates of X = 2,369,949.75 and Y = 456,503.56; thence South 4,727.69 feet to a point having Coordinates of X = 2,369,949.75 and Y = 451,775.87; thence West 6,662.12 feet to a point having Coordinates of X = 2,363,287.63 and Y = 451,775.87; thence North 4,727.69 feet to a point having Coordinates of X = 2,363,287.63 and Y = 456,503.56; thence West 1,869.64 feet to a point having Coordinates of X = 2,361,417.99 and Y = 456,503.56; thence North 11,697.47 feet to the point of beginning, excluding beds and bottoms of all navigable waters, containing approximately 25.00 acres, as shown outlined on a plat on file in the Office of Mineral Resources, Department of Natural Resources, as provided by the applicant. All bearings, distances and coordinates are based on Louisiana Coordinate System of 1927 (South Zone).

NOTE: The above description of the tract nominated for lease has been provided exclusively by the party nominating the tract for lease.

Maps depicting the nominated tract, containing the bearings, distances and coordinates of the nominated tract based on the Louisiana Coordinate System of 1927, North or South Zone, as applicable, are available for public inspection and review at the offices of the Louisiana State Mineral Board from 10:00 a.m. to 3:00 p.m. Monday - Friday.

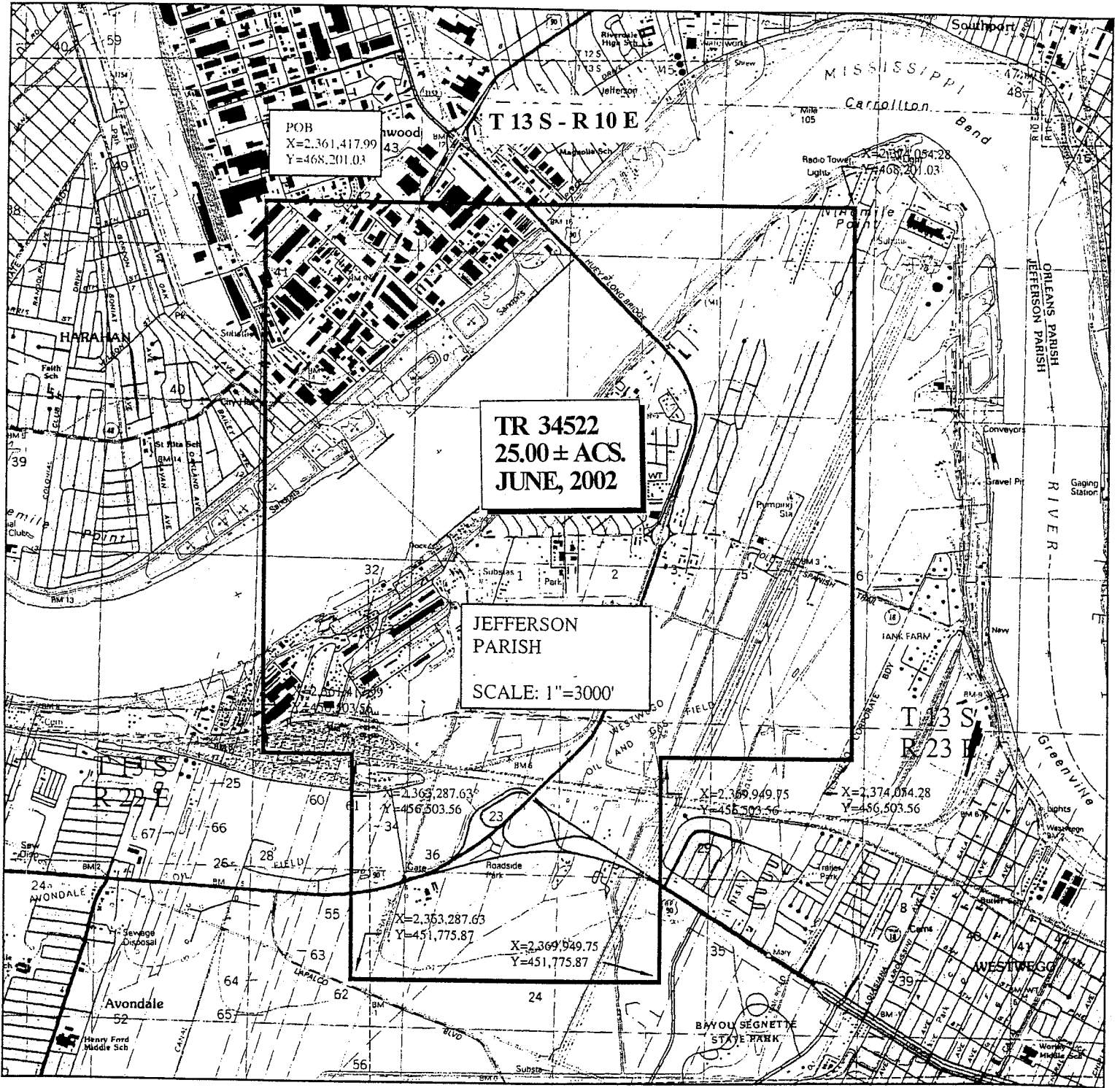
Any mineral lease selected from the nominated tract and awarded by the Louisiana State Mineral Board shall be without warranty of any kind, either express, implied, or statutory, including, but not limited to, the implied warranties or merchantability and fitness for a particular purpose. Should the mineral lease awarded by the Louisiana State Mineral Board be subsequently modified, cancelled or abrogated due to the existence of conflicting leases, operating agreements, private claims or other existing of future obligations or conditions which may affect all or any portion of the leased tract, it shall not relieve the Lessee of the obligation to pay any bonus due thereon to the Louisiana State Mineral Board, nor shall the Louisiana State Mineral Board be obligated to refund any consideration paid by the Lessee prior to such modification, cancellation, or abrogation, including, but not limited to, bonuses, rents and royalties.

NOTE: The State of Louisiana does hereby reserve, and this lease shall be subject to, the imprescriptible right of surface use in the nature of a servitude in favor of the Department of Natural Resources, including its Offices and Commissions, for the sole purpose of implementing, constructing, servicing and maintaining approved coastal zone management and/or restoration projects. Utilization of any and all rights derived under this lease by the mineral lessee, its agents, successors or assigns,

shall not interfere with nor hinder the reasonable surface use by the Department of Natural Resources, its Offices or Commissions, as hereinabove reserved.

Applicant: EKG Services to Agency and by Letter of Authorization from the Louisiana Department of Public Safety and Corrections authorizing the Mineral Board to act in its behalf.

Bidder	Cash Payment	Price / Acre	Rental	Oil	Gas	Other



POB
 X=2,361,417.99
 Y=468,201.03

T 13 S - R 10 E

Radio Tower
 Lights
 X=2,374,084.28
 Y=468,201.03

TR 34522
 25.00 ± ACS.
 JUNE, 2002

JEFFERSON
 PARISH
 SCALE: 1"=3000'

T 13 S -
 R 23 E

X=2,363,287.63
 Y=456,503.56

X=2,369,949.75
 Y=456,503.56

X=2,374,084.28
 Y=456,503.56

X=2,353,287.63
 Y=451,775.87

X=2,369,949.75
 Y=451,775.87

Avondale
 52

BAYOU SEGNETTE
 STATE PARK

WESTWEGG