

T13S-R10E

P.O.B.
X = 2,355,126.68
Y = 468,767.30

Jefferson Parish
Scale: 1"=3000'

TR 34475
481.90 ± ACS.
JUNE, 2002

T13S-R22E

X = 2,348,642.32
Y = 461,606.91

TRACT 34476 - Jefferson Parish, Louisiana

All of the lands now or formerly constituting the beds and bottoms of all water bodies of every nature and description and all islands and other lands formed by accretion or reliction, except tax lands, owned by and not under mineral lease from the State of Louisiana on June 12, 2002, situated in Jefferson Parish, Louisiana, within the following described boundaries: Beginning at a point having Coordinates of X = 2,356,753.55 and Y = 461,988.26; thence North 56 degrees 57 minutes 48.9 seconds East 10,104.50 feet to a point having Coordinates of X = 2,365,224.40 and Y = 467,496.95; thence South 07 degrees 57 minutes 56.9 seconds West 9,372.20 feet to a point having Coordinates of X = 2,363,925.58 and Y = 458,215.18; thence South 57 degrees 32 minutes 31.4 seconds West 6,443.20 feet to a point having Coordinates of X = 2,358,488.90 and Y = 454,757.24; thence North 13 degrees 29 minutes 42.1 seconds West 7,436.34 to the point of beginning, containing approximately 418.10 acres, as shown outlined on a plat on file in the Office of Mineral Resources, Department of Natural Resources, as provided by the applicant. All bearings, distances and coordinates are based on Louisiana Coordinate System of 1927 (South Zone).

NOTE: The above description of the tract nominated for lease has been provided exclusively by the party nominating the tract for lease.

Maps depicting the nominated tract, containing the bearings, distances and coordinates of the nominated tract based on the Louisiana Coordinate System of 1927, North or South Zone, as applicable, are available for public inspection and review at the offices of the Louisiana State Mineral Board from 10:00 a.m. to 3:00 p.m. Monday - Friday.

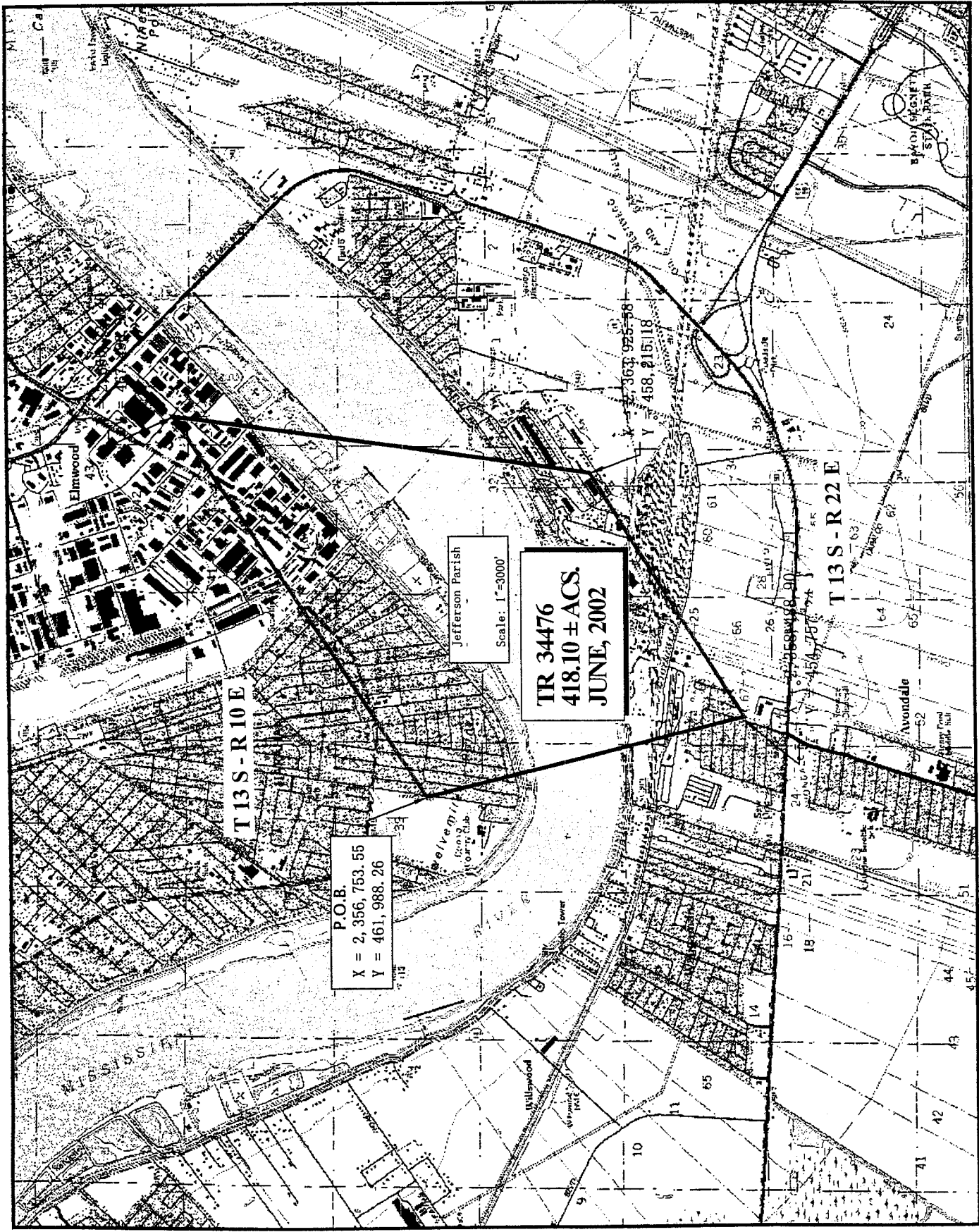
Any mineral lease selected from the nominated tract and awarded by the Louisiana State Mineral Board shall be without warranty of any kind, either express, implied, or statutory, including, but not limited to, the implied warranties or merchantability and fitness for a particular purpose. Should the mineral lease awarded by the Louisiana State Mineral Board be subsequently modified, cancelled or abrogated due to the existence of conflicting leases, operating agreements, private claims or other existing or future obligations or conditions which may affect all or any portion of the leased tract, it shall not relieve the Lessee of the obligation to pay any bonus due thereon to the Louisiana State Mineral Board, nor shall the Louisiana State Mineral Board be obligated to refund any consideration paid by the Lessee prior to such modification, cancellation, or abrogation, including, but not limited to, bonuses, rents and royalties.

NOTE: The State of Louisiana does hereby reserve, and this lease shall be subject to, the imprescriptible right of surface use in the nature of a servitude in favor of the Department of Natural Resources, including its Offices and Commissions, for the sole purpose of implementing, constructing, servicing and maintaining approved coastal zone management and/or restoration projects. Utilization of any and all rights derived under this lease by the mineral lessee, its agents, successors or assigns, shall not interfere with nor hinder the reasonable surface use by the

Department of Natural Resources, its Offices or Commissions, as hereinabove reserved.

Applicant: Jesse B. Newton, III

Bidder	Cash Payment	Price / Acre	Rental	Oil	Gas	Other



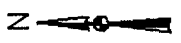
TR 34476
 418.10 ± ACS.
 JUNE, 2002

P.O.B.
 X = 2,356,753.55
 Y = 461,988.26

Jefferson Parish
 Scale: 1"=3000'

T13S-R10E

T13S-R22E



TRACT 34477 - Jefferson Parish, Louisiana

All of the lands now or formerly constituting the beds and bottoms of all water bodies of every nature and description and all islands and other lands formed by accretion or reliction, except tax lands, owned by and not under mineral lease from the State of Louisiana on June 12, 2002, situated in Jefferson Parish, Louisiana, within the following described boundaries: Beginning at a point having Coordinates of X = 2,365,224.40 and Y = 467,496.95; thence North 32 degrees 54 minutes 09.3 seconds East 7,261.68 feet to a point having Coordinates of X = 2,369,169.03 and Y = 473,593.82; thence East 11,603.11 feet to a point having Coordinates of X = 2,380,772.14 and Y = 473,593.82; thence South 34 degrees 45 minutes 28.6 seconds West 10,161.29 feet to a point having Coordinates of X = 2,374,979.08 and Y = 465,245.63; thence South 57 degrees 32 minutes 31.5 seconds West 13,099.89 feet to a point having Coordinates of X = 2,363,925.58 and Y = 458,215.18; thence North 07 degrees 57 minutes 57 seconds East 9,372.20 feet to the point of beginning, containing approximately **941.05 acres**, as shown outlined on a plat on file in the Office of Mineral Resources, Department of Natural Resources, as provided by the applicant. All bearings, distances and coordinates are based on Louisiana Coordinate System of 1927 (South Zone).

NOTE: The above description of the tract nominated for lease has been provided exclusively by the party nominating the tract for lease.

Maps depicting the nominated tract, containing the bearings, distances and coordinates of the nominated tract based on the Louisiana Coordinate System of 1927, North or South Zone, as applicable, are available for public inspection and review at the offices of the Louisiana State Mineral Board from 10:00 a.m. to 3:00 p.m. Monday - Friday.

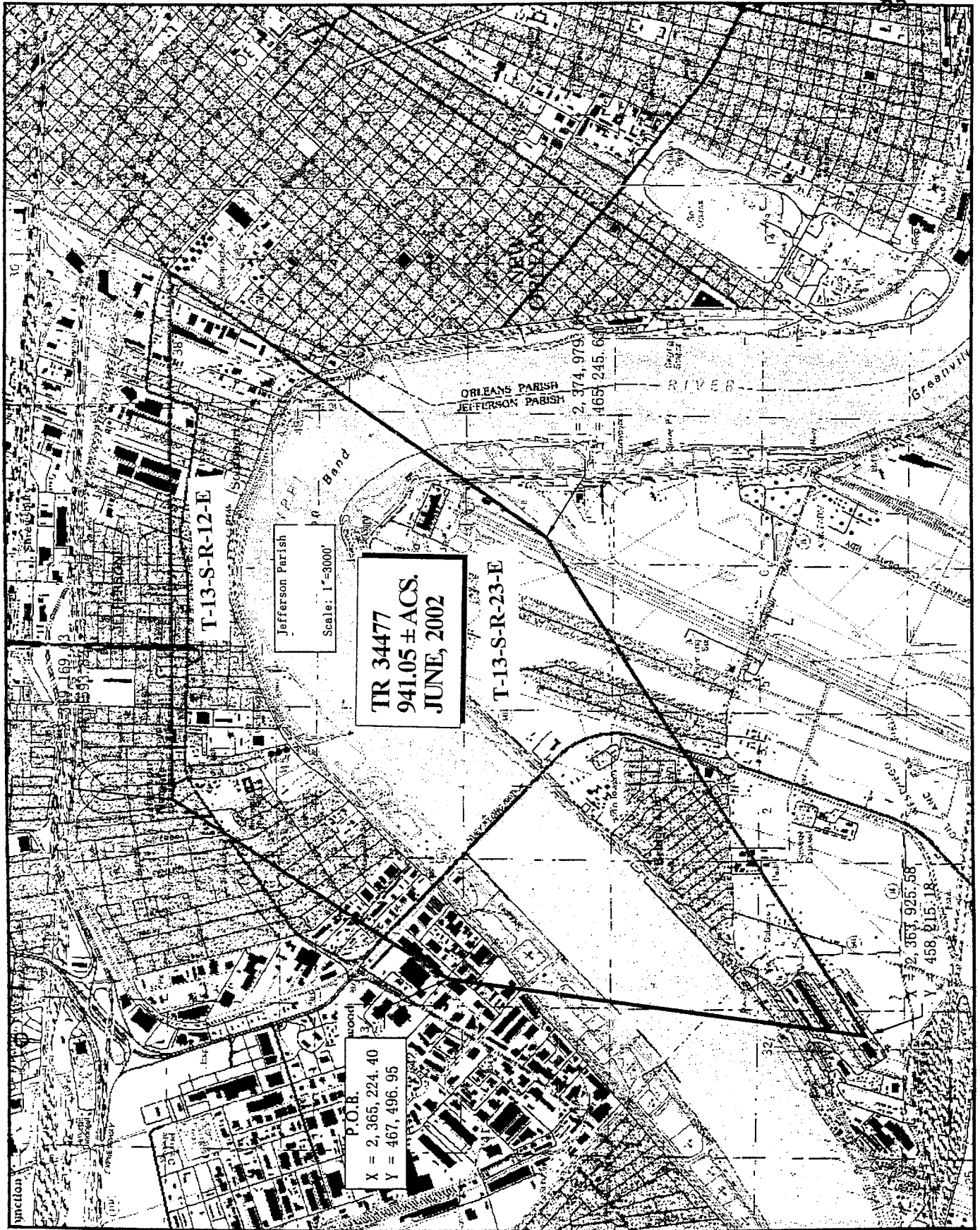
Any mineral lease selected from the nominated tract and awarded by the Louisiana State Mineral Board shall be without warranty of any kind, either express, implied, or statutory, including, but not limited to, the implied warranties or merchantability and fitness for a particular purpose. Should the mineral lease awarded by the Louisiana State Mineral Board be subsequently modified, cancelled or abrogated due to the existence of conflicting leases, operating agreements, private claims or other existing of future obligations or conditions which may affect all or any portion of the leased tract, it shall not relieve the Lessee of the obligation to pay any bonus due thereon to the Louisiana State Mineral Board, nor shall the Louisiana State Mineral Board be obligated to refund any consideration paid by the Lessee prior to such modification, cancellation, or abrogation, including, but not limited to, bonuses, rents and royalties.

NOTE: The State of Louisiana does hereby reserve, and this lease shall be subject to, the imprescriptible right of surface use in the nature of a servitude in favor of the Department of Natural Resources, including its Offices and Commissions, for the sole purpose of implementing, constructing, servicing and maintaining approved coastal zone management and/or restoration projects. Utilization of any and all rights derived under this lease by the mineral lessee, its agents, successors or assigns,

shall not interfere with nor hinder the reasonable surface use by the Department of Natural Resources, its Offices or Commissions, as hereinabove reserved.

Applicant: Jesse B. Newton, III

Bidder	Cash Payment	Price / Acre	Rental	Oil	Gas	Other



T-13-S-R-12-E

T-13-S-R-23-E

Jefferson Parish
Scale: 1"=8000'

TR 34477
941.05 ± ACS,
JUNE, 2002

P.O.B.
X = 2,365,224.40
Y = 467,496.95

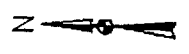
X = 2,367,925.58
Y = 458,015.18

ORLEANS PARISH
JEFFERSON PARISH

2,374,973
465,245.63

RIVER

junction



TRACT 34478 - Jefferson and Orleans Parishes, Louisiana

All of the lands now or formerly constituting the beds and bottoms of all water bodies of every nature and description and all islands and other lands formed by accretion or reliction, except tax lands, owned by and not under mineral lease from the State of Louisiana on June 12, 2002, situated in Jefferson and Orleans Parishes, Louisiana, within the following described boundaries: Beginning at a point having Coordinates of X = 2,380,772.14 and Y = 471,066.86; thence South 18,088.88 feet to a point having Coordinates of X = 2,380,772.14 and Y = 452,977.98; thence West 5,793.06 feet to a point having Coordinates of X = 2,374,979.08 and Y = 452,977.98; thence North 12,267.65 feet to a point having Coordinates of X = 2,374,979.08 and Y = 465,245.63; thence North 34 degrees 45 minutes 28.7 seconds East 7,085.52 feet to a point having Coordinates of X = 2,379,018.61 and Y = 471,066.86 East 1,753.53 feet to the point of beginning, containing approximately 771.14 acres, as shown outlined on a plat on file in the Office of Mineral Resources, Department of Natural Resources, as provided by the applicant. All bearings, distances and coordinates are based on Louisiana Coordinate System of 1927 (South Zone).

NOTE: The above description of the tract nominated for lease has been provided exclusively by the party nominating the tract for lease.

Maps depicting the nominated tract, containing the bearings, distances and coordinates of the nominated tract based on the Louisiana Coordinate System of 1927, North or South Zone, as applicable, are available for public inspection and review at the offices of the Louisiana State Mineral Board from 10:00 a.m. to 3:00 p.m. Monday - Friday.

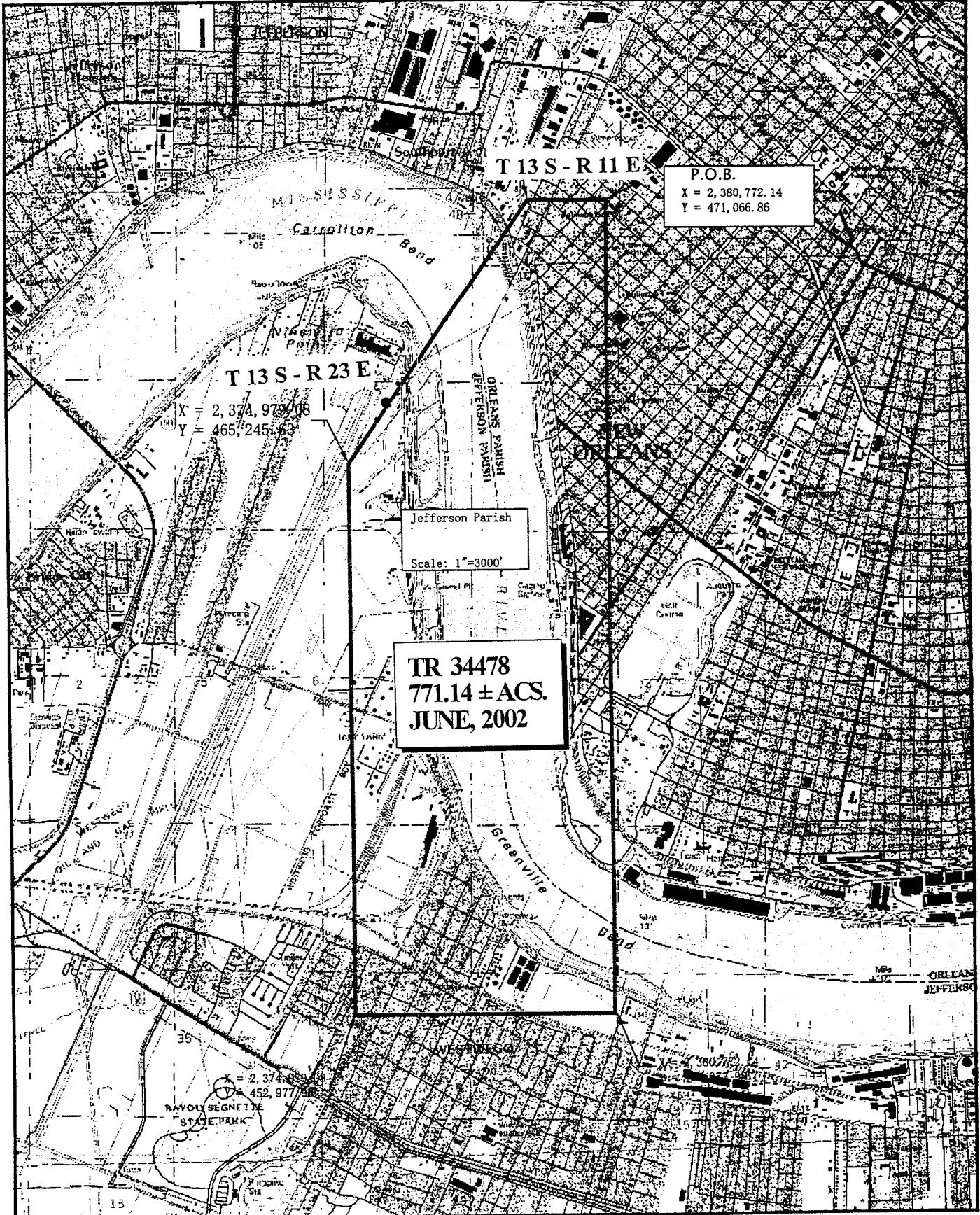
Any mineral lease selected from the nominated tract and awarded by the Louisiana State Mineral Board shall be without warranty of any kind, either express, implied, or statutory, including, but not limited to, the implied warranties or merchantability and fitness for a particular purpose. Should the mineral lease awarded by the Louisiana State Mineral Board be subsequently modified, cancelled or abrogated due to the existence of conflicting leases, operating agreements, private claims or other existing or future obligations or conditions which may affect all or any portion of the leased tract, it shall not relieve the Lessee of the obligation to pay any bonus due thereon to the Louisiana State Mineral Board, nor shall the Louisiana State Mineral Board be obligated to refund any consideration paid by the Lessee prior to such modification, cancellation, or abrogation, including, but not limited to, bonuses, rents and royalties.

NOTE: The State of Louisiana does hereby reserve, and this lease shall be subject to, the imprescriptible right of surface use in the nature of a servitude in favor of the Department of Natural Resources, including its Offices and Commissions, for the sole purpose of implementing, constructing, servicing and maintaining approved coastal zone management and/or restoration projects. Utilization of any and all rights derived under this lease by the mineral lessee, its agents, successors or assigns, shall not interfere with nor hinder the reasonable surface use by the

Department of Natural Resources, its Offices or Commissions, as hereinabove reserved.

Applicant: Jesse B. Newton, III

Bidder	Cash Payment	Price / Acre	Rental	Oil	Gas	Other



T 13 S - R 11 E

P.O.B.
X = 2,380,772.14
Y = 471,066.86

T 13 S - R 23 E

X = 2,374,979.08
Y = 465,245.63

Jefferson Parish
Scale: 1"=3000'

TR 34478
771.14 ± ACS.
JUNE, 2002

2,374,979.08
452,977.08
RAVOLI SEGNETTE
STATE PARK

TRACT 34479 - Jefferson and Orleans Parishes, Louisiana

All of the lands now or formerly constituting the beds and bottoms of all water bodies of every nature and description and all islands and other lands formed by accretion or reliction, except tax lands, owned by and not under mineral lease from the State of Louisiana on June 12, 2002, situated in Jefferson and Orleans Parishes, Louisiana, within the following described boundaries: Beginning at a point having Coordinates of X = 2,380,772.14 and Y = 458,215.72; thence East 15,979.08 feet to a point having Coordinates of X = 2,396,751.22 and Y = 458,215.72; thence South 18 degrees 54 minutes 13.1 seconds West 8,917.59 feet to a point having Coordinates of X = 2,393,862.12 and Y = 449,779.10; thence North 82 degrees 47 minutes 52.9 seconds West 13,194.08 feet to a point having Coordinates of X = 2,380,772.14 and Y = 451,433.21; thence North 6,782.51 feet to the point of beginning, containing approximately 830 acres, as shown outlined on a plat on file in the Office of Mineral Resources, Department of Natural Resources, as provided by the applicant. All bearings, distances and coordinates are based on Louisiana Coordinate System of 1927 (South Zone).

NOTE: The above description of the tract nominated for lease has been provided exclusively by the party nominating the tract for lease.

Maps depicting the nominated tract, containing the bearings, distances and coordinates of the nominated tract based on the Louisiana Coordinate System of 1927, North or South Zone, as applicable, are available for public inspection and review at the offices of the Louisiana State Mineral Board from 10:00 a.m. to 3:00 p.m. Monday - Friday.

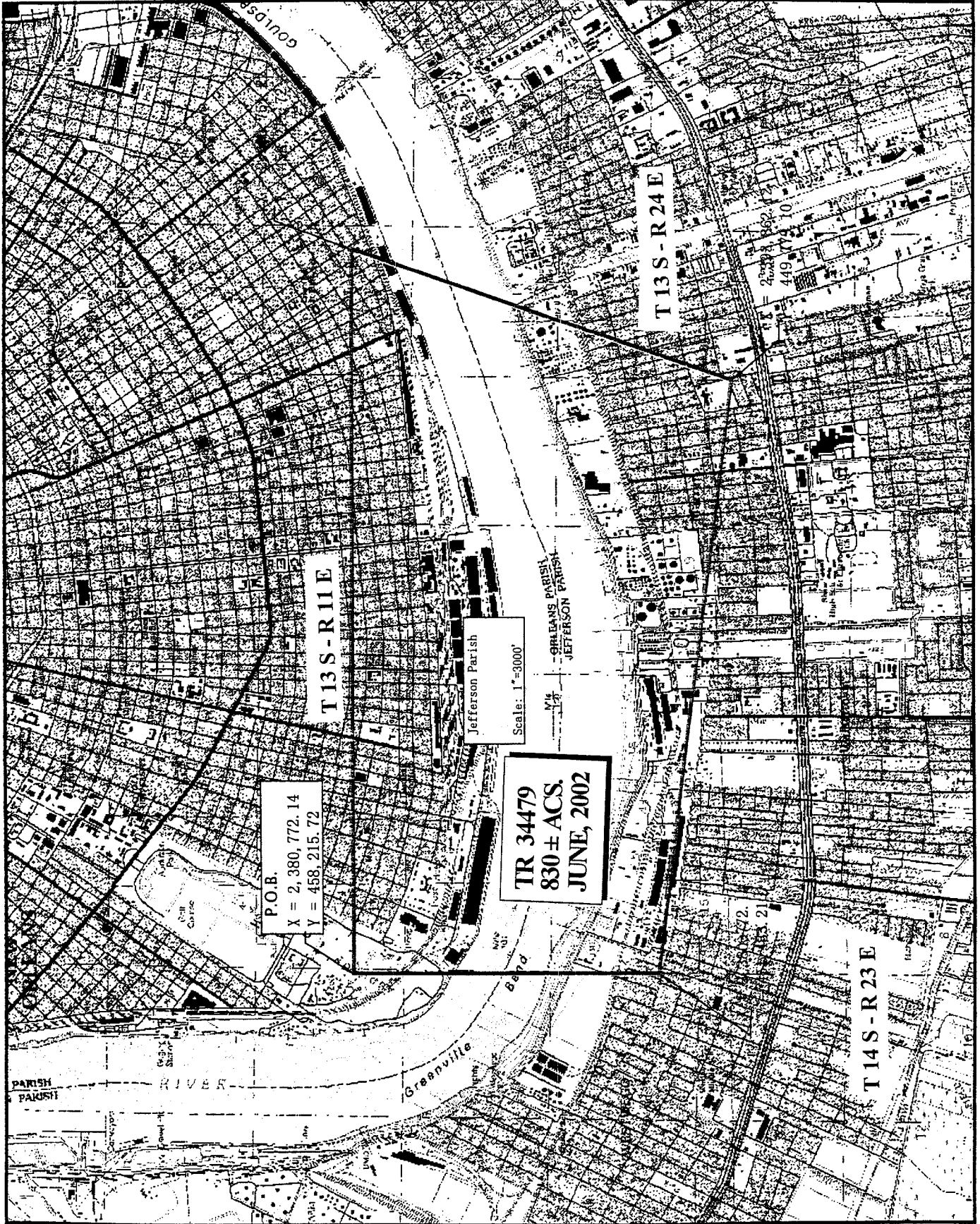
Any mineral lease selected from the nominated tract and awarded by the Louisiana State Mineral Board shall be without warranty of any kind, either express, implied, or statutory, including, but not limited to, the implied warranties or merchantability and fitness for a particular purpose. Should the mineral lease awarded by the Louisiana State Mineral Board be subsequently modified, cancelled or abrogated due to the existence of conflicting leases, operating agreements, private claims or other existing or future obligations or conditions which may affect all or any portion of the leased tract, it shall not relieve the Lessee of the obligation to pay any bonus due thereon to the Louisiana State Mineral Board, nor shall the Louisiana State Mineral Board be obligated to refund any consideration paid by the Lessee prior to such modification, cancellation, or abrogation, including, but not limited to, bonuses, rents and royalties.

NOTE: The State of Louisiana does hereby reserve, and this lease shall be subject to, the imprescriptible right of surface use in the nature of a servitude in favor of the Department of Natural Resources, including its Offices and Commissions, for the sole purpose of implementing, constructing, servicing and maintaining approved coastal zone management and/or restoration projects. Utilization of any and all rights derived under this lease by the mineral lessee, its agents, successors or assigns, shall not interfere with nor hinder the reasonable surface use by the

Department of Natural Resources, its Offices or Commissions, as hereinabove reserved.

Applicant: Jesse B. Newton, III

Bidder	Cash Payment	Price / Acre	Rental	Oil	Gas	Other



TRACT 34480 - St. Charles Parish, Louisiana

All of the right, title and interest of the State of Louisiana in the mineral rights in and to the following described property, which is not under mineral lease from the State of Louisiana on June 12, 2002, situated in St. Charles Parish, Louisiana, and being more fully described as follows: A tract of land situated in Sections 34 & 36, Township 13 South, Range 21 East, measuring on half (1/2) arpent by 50 arpents deep, situated in St. Charles Parish, Louisiana, and being adjudicated to the State of Louisiana for a 1934 assessment in the name of Issac Madison, containing approximately **25 acres**, as shown outlined on a plat on file in the Office of Mineral Resources, Department of Natural Resources, as provided by the applicant. All bearings, distances and coordinates are based on Louisiana Coordinate System of 1927 (South Zone).

NOTE: The above description of the tract nominated for lease has been provided exclusively by the party nominating the tract for lease.

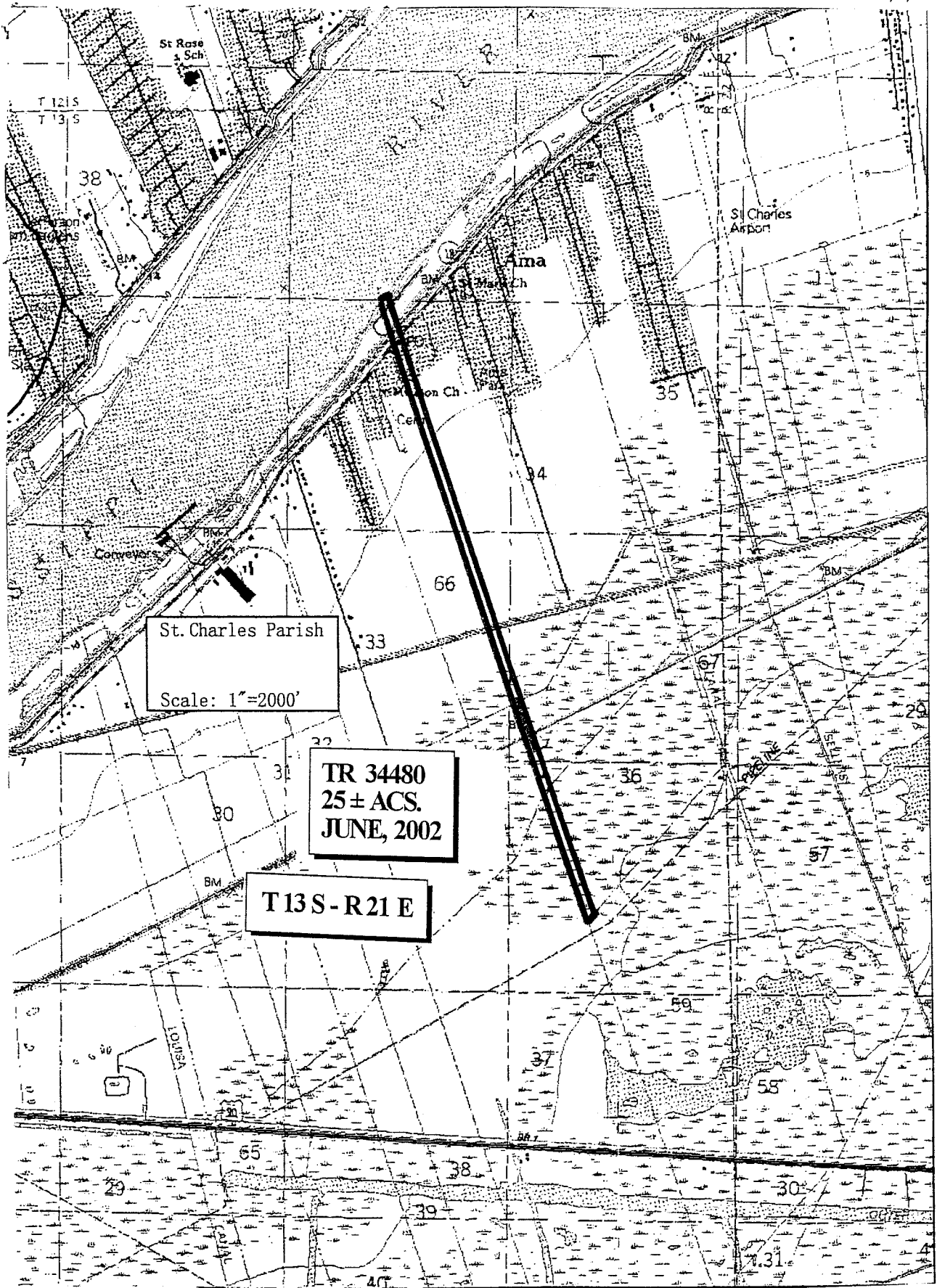
Maps depicting the nominated tract, containing the bearings, distances and coordinates of the nominated tract based on the Louisiana Coordinate System of 1927, North or South Zone, as applicable, are available for public inspection and review at the offices of the Louisiana State Mineral Board from 10:00 a.m. to 3:00 p.m. Monday - Friday.

Any mineral lease selected from the nominated tract and awarded by the Louisiana State Mineral Board shall be without warranty of any kind, either express, implied, or statutory, including, but not limited to, the implied warranties or merchantability and fitness for a particular purpose. Should the mineral lease awarded by the Louisiana State Mineral Board be subsequently modified, cancelled or abrogated due to the existence of conflicting leases, operating agreements, private claims or other existing of future obligations or conditions which may affect all or any portion of the leased tract, it shall not relieve the Lessee of the obligation to pay any bonus due thereon to the Louisiana State Mineral Board, nor shall the Louisiana State Mineral Board be obligated to refund any consideration paid by the Lessee prior to such modification, cancellation, or abrogation, including, but not limited to, bonuses, rents and royalties.

NOTE: The State of Louisiana does hereby reserve, and this lease shall be subject to, the imprescriptible right of surface use in the nature of a servitude in favor of the Department of Natural Resources, including its Offices and Commissions, for the sole purpose of implementing, constructing, servicing and maintaining approved coastal zone management and/or restoration projects. Utilization of any and all rights derived under this lease by the mineral lessee, its agents, successors or assigns, shall not interfere with nor hinder the reasonable surface use by the Department of Natural Resources, its Offices or Commissions, as hereinabove reserved.

Applicant: Amy Venable

Bidder	Cash Payment	Price / Acre	Rental	Oil	Gas	Other



St. Charles Parish
 Scale: 1"=2000'

TR 34480
 25± ACS.
 JUNE, 2002

T13S-R21E

TRACT 34481 - St. Charles Parish, Louisiana

All of the right, title and interest of the State of Louisiana in and to the land owned by and not under mineral lease from the State of Louisiana on June 12, 2002, situated in St. Charles Parish, Louisiana, and being more fully described as follows: Undivided quarter (1/4) interest in a tract of land situated in Sections 34 and 36, Township 13 South, Range 21 East, measuring on half (1/2) arpent by 40 arpents deep, situated in St. Charles Parish, Louisiana, and adjudicated to the State of Louisiana for a 1933 assessment in the name of the Estate of Marshall Bennett, containing approximately **32 gross acres and 8 net acres**, as shown outlined on a plat on file in the Office of Mineral Resources, Department of Natural Resources, as provided by the applicant. All bearings, distances and coordinates are based on Louisiana Coordinate System of 1927 (South Zone).

NOTE: The above description of the tract nominated for lease has been provided exclusively by the party nominating the tract for lease.

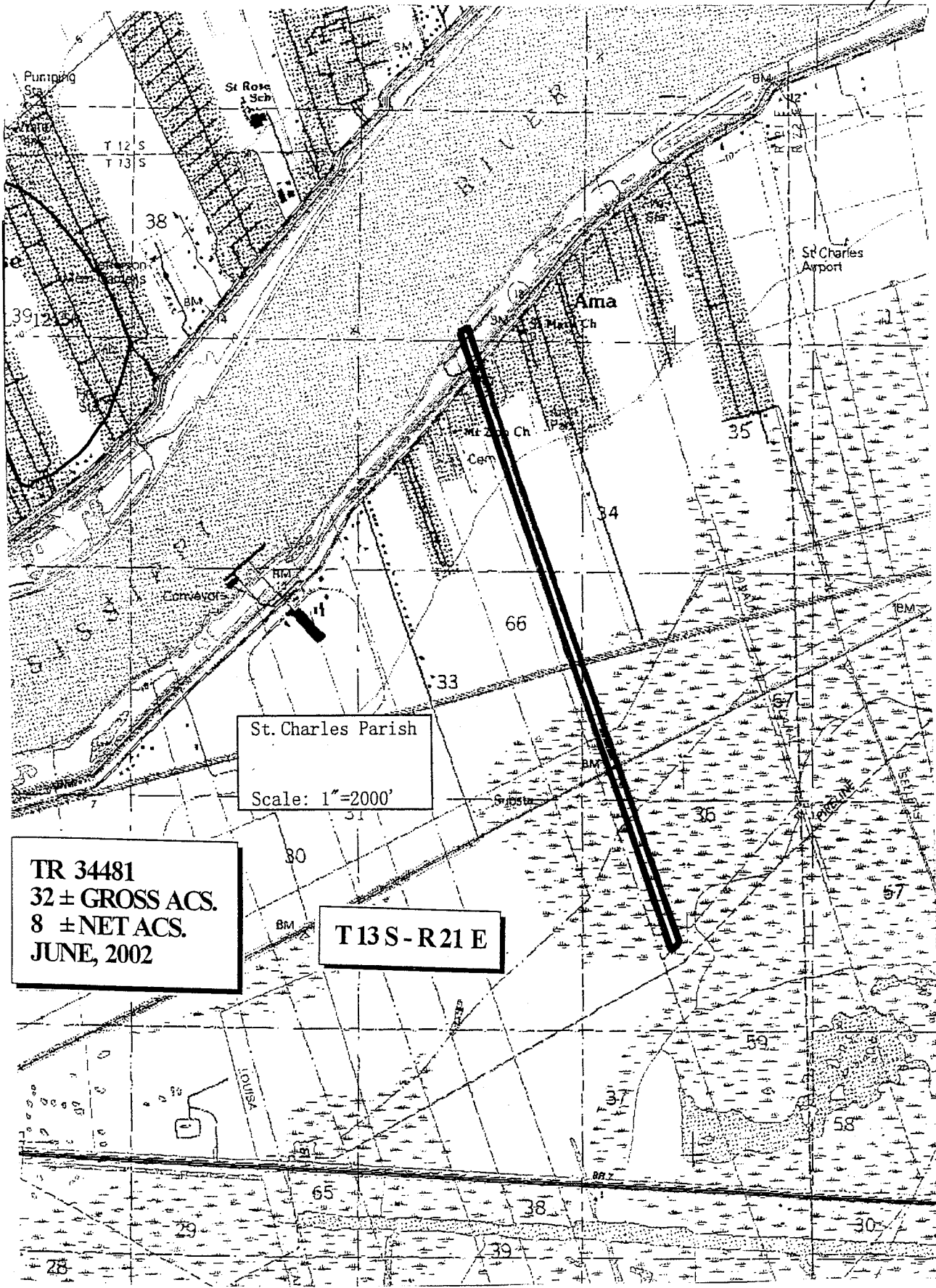
Maps depicting the nominated tract, containing the bearings, distances and coordinates of the nominated tract based on the Louisiana Coordinate System of 1927, North or South Zone, as applicable, are available for public inspection and review at the offices of the Louisiana State Mineral Board from 10:00 a.m. to 3:00 p.m. Monday - Friday.

Any mineral lease selected from the nominated tract and awarded by the Louisiana State Mineral Board shall be without warranty of any kind, either express, implied, or statutory, including, but not limited to, the implied warranties or merchantability and fitness for a particular purpose. Should the mineral lease awarded by the Louisiana State Mineral Board be subsequently modified, cancelled or abrogated due to the existence of conflicting leases, operating agreements, private claims or other existing or future obligations or conditions which may affect all or any portion of the leased tract, it shall not relieve the Lessee of the obligation to pay any bonus due thereon to the Louisiana State Mineral Board, nor shall the Louisiana State Mineral Board be obligated to refund any consideration paid by the Lessee prior to such modification, cancellation, or abrogation, including, but not limited to, bonuses, rents and royalties.

NOTE: The State of Louisiana does hereby reserve, and this lease shall be subject to, the imprescriptible right of surface use in the nature of a servitude in favor of the Department of Natural Resources, including its Offices and Commissions, for the sole purpose of implementing, constructing, servicing and maintaining approved coastal zone management and/or restoration projects. Utilization of any and all rights derived under this lease by the mineral lessee, its agents, successors or assigns, shall not interfere with nor hinder the reasonable surface use by the Department of Natural Resources, its Offices or Commissions, as hereinabove reserved.

Applicant: Amy Venable

Bidder	Cash Payment	Price / Acre	Rental	Oil	Gas	Other



St. Charles Parish
Scale: 1"=2000'

TR 34481
32 ± GROSS ACS.
8 ± NET ACS.
JUNE, 2002

T 13 S - R 21 E

TRACT 34482 - St. Charles Parish, Louisiana

All lands owned by and not under mineral lease from the State of Louisiana on June 12, 2002, situated in St. Charles Parish, Louisiana, and being more fully described as follows: Lot one (1) of fractional Section 2, Township 14 South, Range 21 East, approximately **39.52 acres**, **LESS AND EXCEPT**, any portions of Salvador Wildlife Management Area, as shown outlined on a plat on file in the Office of Mineral Resources, Department of Natural Resources, as provided by the applicant. All bearings, distances and coordinates are based on Louisiana Coordinate System of 1927 (South Zone).

NOTE: The above description of the tract nominated for lease has been provided exclusively by the party nominating the tract for lease.

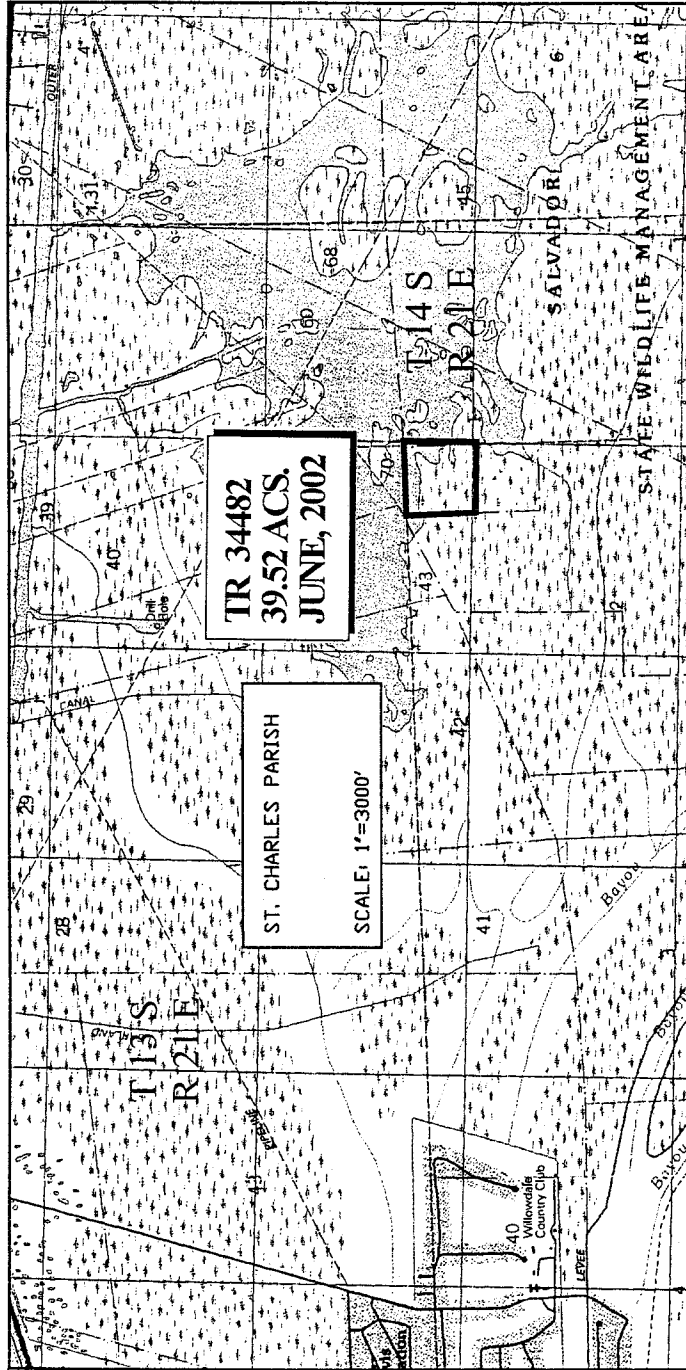
Maps depicting the nominated tract, containing the bearings, distances and coordinates of the nominated tract based on the Louisiana Coordinate System of 1927, North or South Zone, as applicable, are available for public inspection and review at the offices of the Louisiana State Mineral Board from 10:00 a.m. to 3:00 p.m. Monday - Friday.

Any mineral lease selected from the nominated tract and awarded by the Louisiana State Mineral Board shall be without warranty of any kind, either express, implied, or statutory, including, but not limited to, the implied warranties or merchantability and fitness for a particular purpose. Should the mineral lease awarded by the Louisiana State Mineral Board be subsequently modified, cancelled or abrogated due to the existence of conflicting leases, operating agreements, private claims or other existing or future obligations or conditions which may affect all or any portion of the leased tract, it shall not relieve the Lessee of the obligation to pay any bonus due thereon to the Louisiana State Mineral Board, nor shall the Louisiana State Mineral Board be obligated to refund any consideration paid by the Lessee prior to such modification, cancellation, or abrogation, including, but not limited to, bonuses, rents and royalties.

NOTE: The State of Louisiana does hereby reserve, and this lease shall be subject to, the imprescriptible right of surface use in the nature of a servitude in favor of the Department of Natural Resources, including its Offices and Commissions, for the sole purpose of implementing, constructing, servicing and maintaining approved coastal zone management and/or restoration projects. Utilization of any and all rights derived under this lease by the mineral lessee, its agents, successors or assigns, shall not interfere with nor hinder the reasonable surface use by the Department of Natural Resources, its Offices or Commissions, as hereinabove reserved.

Applicant: Lee Sonnier, III

Bidder	Cash Payment	Price / Acre	Rental	Oil	Gas	Other



TR 34482
 39.52 ACS.
 JUNE, 2002

ST. CHARLES PARISH
 SCALE: 1"=3000'

Willowdale
 County Clip