

Applicant: Carrie Rene

| Bidder | Cash Payment | Price / Acre | Rental | Oil | Gas | Other |
|--------|--------------|--------------|--------|-----|-----|-------|
| | | | | | | |
| | | | | | | |
| | | | | | | |
| | | | | | | |

R 17 E

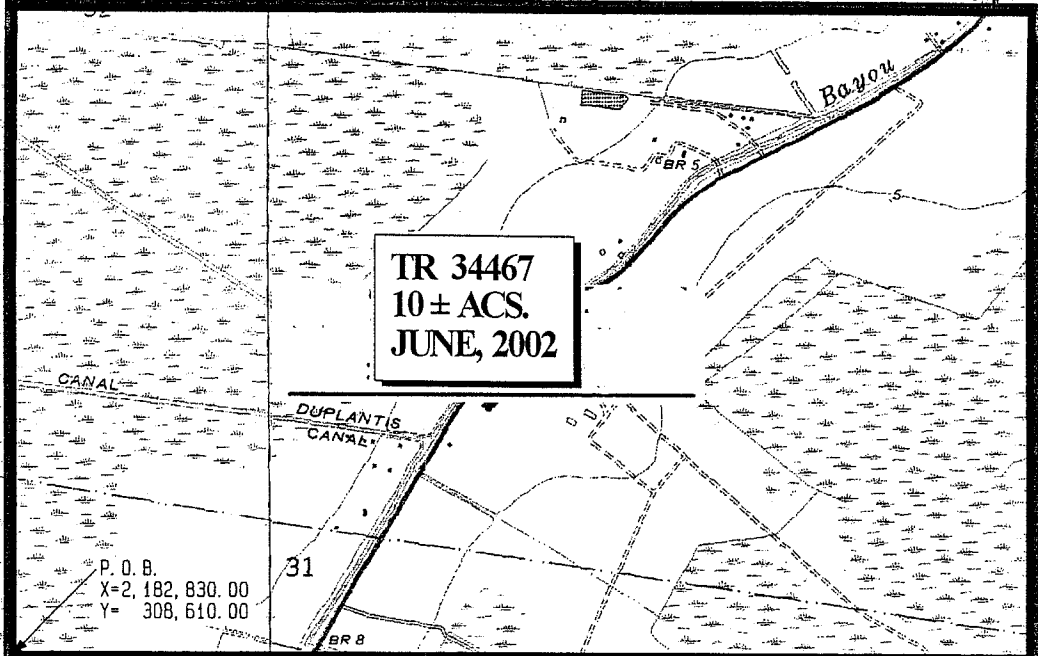
55



Crozier

X = 2,182,830.00
Y = 315,340.00

X = 2,193,550.00
Y = 315,340.00



TR 34467
10± ACS.
JUNE, 2002

P. O. B.
X = 2,182,830.00
Y = 308,610.00

X = 2,193,550.00
Y = 308,610.00

T 18 S
DUPLANTIS CANAL

31

18

315

315

18

43

42

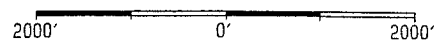
PIPELINE

CANAL

NAD 27 LAMBERT LA. SOUTH ZONE



Terrebonne Parish, Louisiana



TRACT 34468 - Terrebonne Parish, Louisiana

All of the lands now or formerly constituting the beds and bottoms of all water bodies of every nature and description and all islands and other lands formed by accretion or reliction, except tax lands, owned by and not under mineral lease from the State of Louisiana on June 12, 2002, situated in Terrebonne Parish, Louisiana, within the following described boundaries: Beginning at a point having Coordinates of X = 2,177,470.00 and Y = 301,880.00; thence North 6,730.00 feet to a point having Coordinates of X = 2,177,470.00 and Y = 308,610.00; thence East 10,720.00 feet to a point having Coordinates of X = 2,188,190.00 and Y = 308,610.00; thence South 6,730.00 feet to a point having Coordinates of X = 2,188,190.00 and Y = 301,880.00; thence West 10,720.00 feet to the point of beginning, containing approximately 9 acres, as shown outlined on a plat on file in the Office of Mineral Resources, Department of Natural Resources, as provided by the applicant. All bearings, distances and coordinates are based on Louisiana Coordinate System of 1927 (South Zone).

NOTE: The above description of the tract nominated for lease has been provided exclusively by the party nominating the tract for lease.

Maps depicting the nominated tract, containing the bearings, distances and coordinates of the nominated tract based on the Louisiana Coordinate System of 1927, North or South Zone, as applicable, are available for public inspection and review at the offices of the Louisiana State Mineral Board from 10:00 a.m. to 3:00 p.m. Monday - Friday.

Any mineral lease selected from the nominated tract and awarded by the Louisiana State Mineral Board shall be without warranty of any kind, either express, implied, or statutory, including, but not limited to, the implied warranties or merchantability and fitness for a particular purpose. Should the mineral lease awarded by the Louisiana State Mineral Board be subsequently modified, cancelled or abrogated due to the existence of conflicting leases, operating agreements, private claims or other existing or future obligations or conditions which may affect all or any portion of the leased tract, it shall not relieve the Lessee of the obligation to pay any bonus due thereon to the Louisiana State Mineral Board, nor shall the Louisiana State Mineral Board be obligated to refund any consideration paid by the Lessee prior to such modification, cancellation, or abrogation, including, but not limited to, bonuses, rents and royalties.

NOTE: The State of Louisiana does hereby reserve, and this lease shall be subject to, the imprescriptible right of surface use in the nature of a servitude in favor of the Department of Natural Resources, including its Offices and Commissions, for the sole purpose of implementing, constructing, servicing and maintaining approved coastal zone management and/or restoration projects. Utilization of any and all rights derived under this lease by the mineral lessee, its agents, successors or assigns, shall not interfere with nor hinder the reasonable surface use by the Department of Natural Resources, its Offices or Commissions, as hereinabove reserved.

Applicant: Carrie Rene

| Bidder | Cash Payment | Price / Acre | Rental | Oil | Gas | Other |
|--------|--------------|--------------|--------|-----|-----|-------|
| | | | | | | |
| | | | | | | |
| | | | | | | |
| | | | | | | |

34

DUPLANTIS R 17 E CANAL

DUPLANTIS CANAL

50

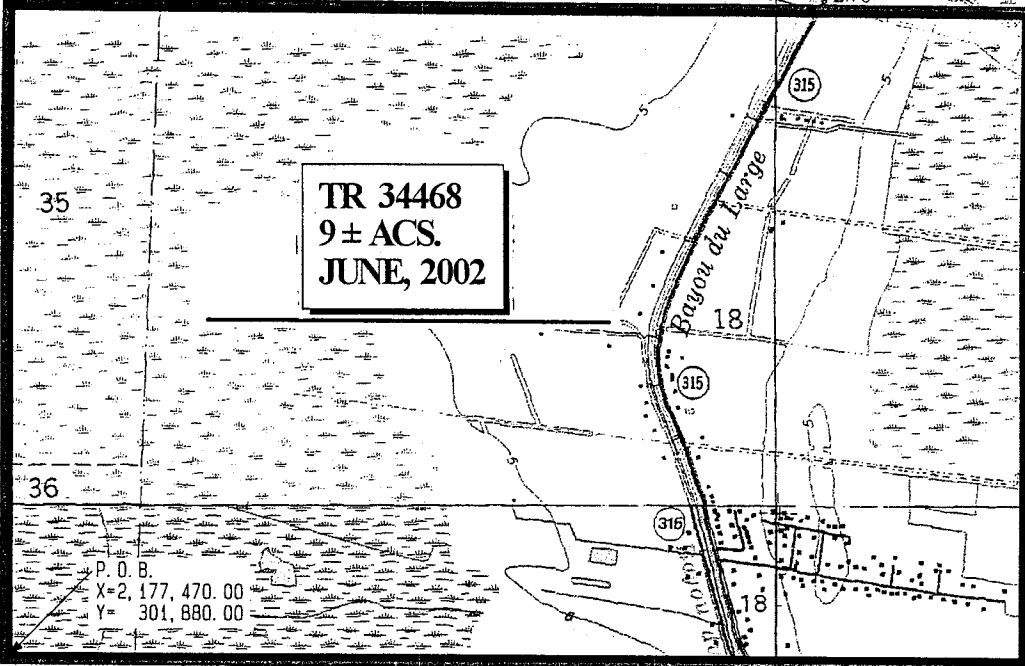
31

BR 8

X = 2,177,470.00
Y = 308,610.00

X = 2,188,190.00
Y = 308,610.00

T
18
S



TR 34468
9± ACS.
JUNE, 2002

P.O.B.
X = 2,177,470.00
Y = 301,880.00

36

36

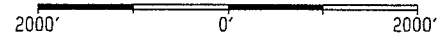
X = 2,188,190.00
Y = 301,880.00

Drill Hole

NAD 27 LAMBERT L.A. SOUTH ZONE



Terrebonne Parish, Louisiana



TRACT 34469 - St. Charles Parish, Louisiana

All of the lands now or formerly constituting the beds and bottoms of all water bodies of every nature and description and all islands and other lands formed by accretion or reliction, except tax lands, owned by and not under mineral lease from the State of Louisiana on June 12, 2002, situated in St. Charles Parish, Louisiana, within the following described boundaries: Beginning at a point having Coordinates of X = 2,297,887.36 and Y = 467,363.14 thence South 80 degrees 40 minutes 35.4 seconds East 14,795.59 feet to a point having Coordinates of X = 2,312,487.49 and Y = 464,966.13; thence South 18 degrees 27 minutes 30.1 seconds East 5,612.21 feet to a point having Coordinates of X = 2,314,264.40 and Y = 459,642.65; thence North 80 degrees 42 minutes 15.1 seconds West 16,529.29 to a point having Coordinates of X = 2,297,952.18 and Y = 462,312.65 feet; thence North 00 degrees 44 minutes and 07.1 seconds West 5,050.91 feet to the point of beginning, containing approximately 772.30 acres, as shown outlined on a plat on file in the Office of Mineral Resources, Department of Natural Resources, as provided by the applicant. All bearings, distances and coordinates are based on Louisiana Coordinate System of 1927 (South Zone).

NOTE: The above description of the tract nominated for lease has been provided exclusively by the party nominating the tract for lease.

Maps depicting the nominated tract, containing the bearings, distances and coordinates of the nominated tract based on the Louisiana Coordinate System of 1927, North or South Zone, as applicable, are available for public inspection and review at the offices of the Louisiana State Mineral Board from 10:00 a.m. to 3:00 p.m. Monday - Friday.

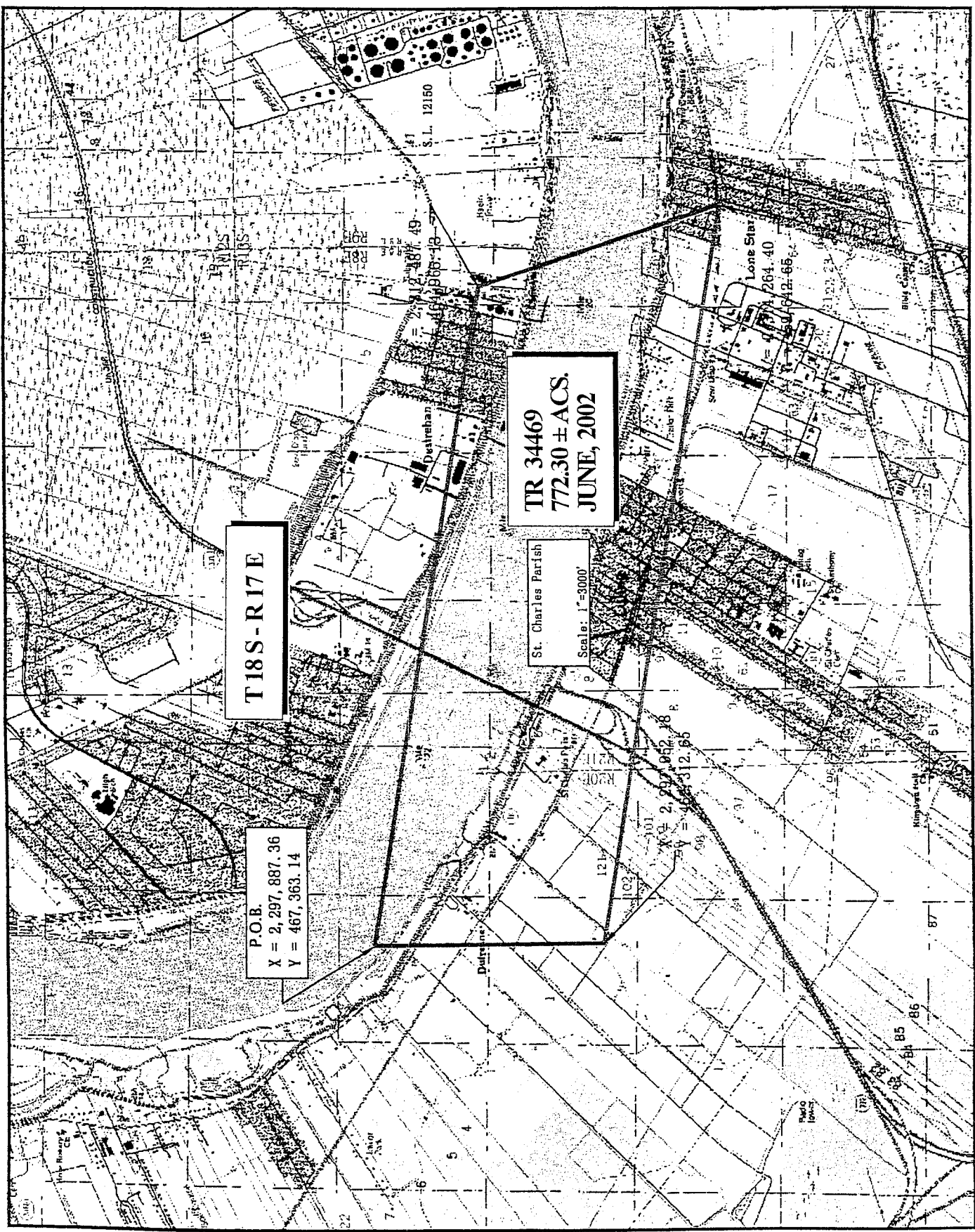
Any mineral lease selected from the nominated tract and awarded by the Louisiana State Mineral Board shall be without warranty of any kind, either express, implied, or statutory, including, but not limited to, the implied warranties or merchantability and fitness for a particular purpose. Should the mineral lease awarded by the Louisiana State Mineral Board be subsequently modified, cancelled or abrogated due to the existence of conflicting leases, operating agreements, private claims or other existing or future obligations or conditions which may affect all or any portion of the leased tract, it shall not relieve the Lessee of the obligation to pay any bonus due thereon to the Louisiana State Mineral Board, nor shall the Louisiana State Mineral Board be obligated to refund any consideration paid by the Lessee prior to such modification, cancellation, or abrogation, including, but not limited to, bonuses, rents and royalties.

NOTE: The State of Louisiana does hereby reserve, and this lease shall be subject to, the imprescriptible right of surface use in the nature of a servitude in favor of the Department of Natural Resources, including its Offices and Commissions, for the sole purpose of implementing, constructing, servicing and maintaining approved coastal zone management and/or restoration projects. Utilization of any and all rights derived under this lease by the mineral lessee, its agents, successors or assigns, shall not interfere with nor hinder the reasonable surface use by the

Department of Natural Resources, its Offices or Commissions, as hereinabove reserved.

Applicant: Jesse B. Newton, III

| Bidder | Cash Payment | Price / Acre | Rental | Oil | Gas | Other |
|--------|--------------|--------------|--------|-----|-----|-------|
| | | | | | | |
| | | | | | | |
| | | | | | | |
| | | | | | | |

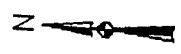


T18S-R17E

TR 34469
772.30 ± ACS.
JUNE, 2002

P.O.B.
X = 2,297,887.36
Y = 467,363.14

St. Charles Parish
Scale: 1"=5000'



TRACT 34470 - St. Charles Parish, Louisiana

All of the lands now or formerly constituting the beds and bottoms of all water bodies of every nature and description and all islands and other lands formed by accretion or reliction, except tax lands, owned by and not under mineral lease from the State of Louisiana on June 12, 2002, situated in St. Charles Parish, Louisiana, within the following described boundaries: Beginning at a point having Coordinates of X = 2,312,487.49 and Y = 464,966.13 thence South 88 degrees 31 minutes 55.7 seconds East 7,342.24 feet to a point having Coordinates of X = 2,319,827.32 and Y = 464,778.05; thence South 21 degrees 09 minutes 38.2 seconds East 4,444.72 feet to a point having Coordinates of X = 2,321,431.79 and Y = 460,633.03; thence South 82 degrees 07 minutes 58 seconds West 7,235.49 feet to a point having Coordinates of X = 2,314,264.40 and Y = 459,642.65; thence North 18 degrees 27 minutes 30.1 seconds West 5,612.21 feet to the point of beginning, **LESS AND EXCEPT** all lands and or Tax Adjudicated Lands situated in the confines of State Lease No. 12150, as amended, containing approximately **351.47 acres**, as shown outlined on a plat on file in the Office of Mineral Resources, Department of Natural Resources, as provided by the applicant. All bearings, distances and coordinates are based on Louisiana Coordinate System of 1927 (South Zone).

NOTE: The above description of the tract nominated for lease has been provided exclusively by the party nominating the tract for lease.

Maps depicting the nominated tract, containing the bearings, distances and coordinates of the nominated tract based on the Louisiana Coordinate System of 1927, North or South Zone, as applicable, are available for public inspection and review at the offices of the Louisiana State Mineral Board from 10:00 a.m. to 3:00 p.m. Monday - Friday.

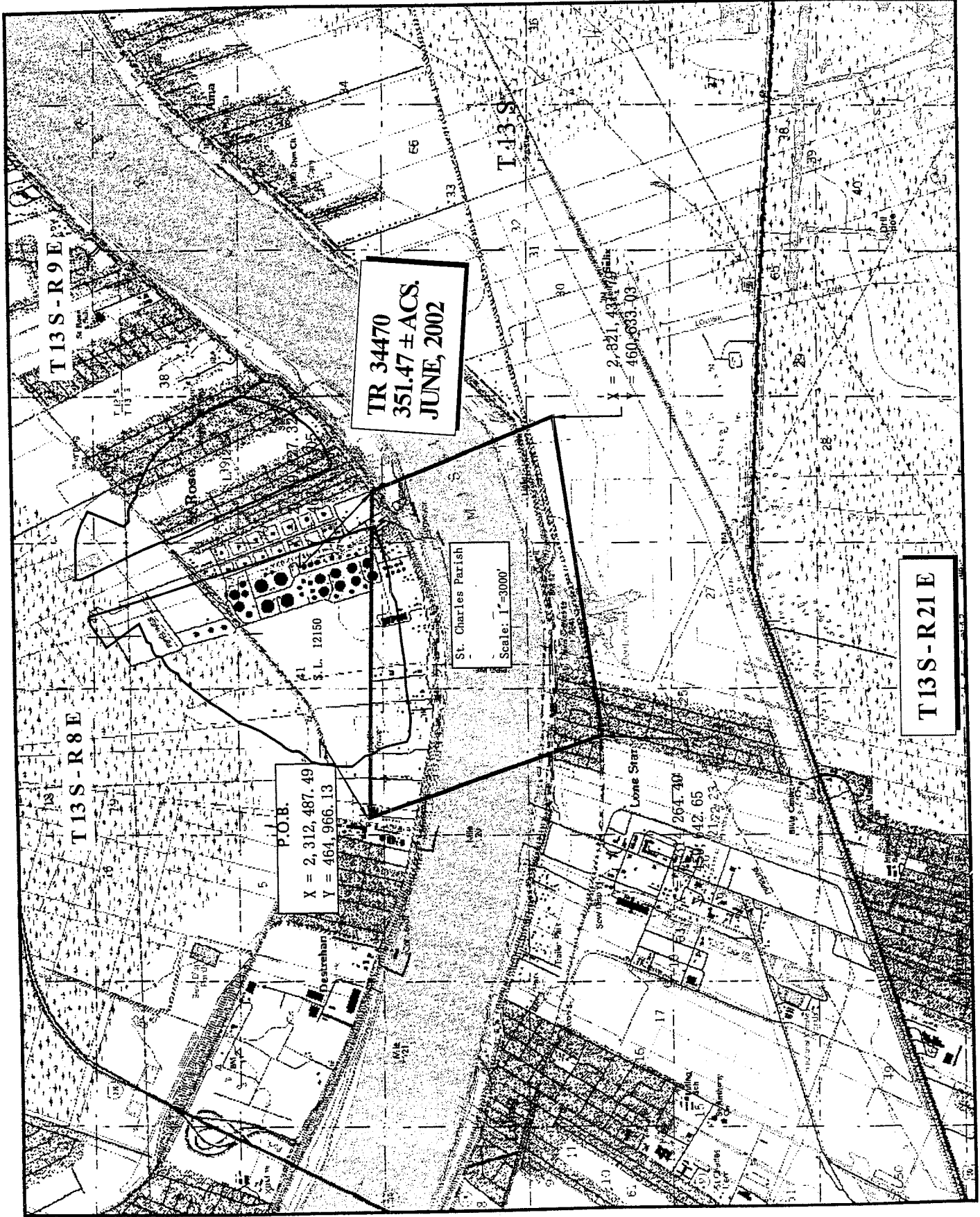
Any mineral lease selected from the nominated tract and awarded by the Louisiana State Mineral Board shall be without warranty of any kind, either express, implied, or statutory, including, but not limited to, the implied warranties or merchantability and fitness for a particular purpose. Should the mineral lease awarded by the Louisiana State Mineral Board be subsequently modified, cancelled or abrogated due to the existence of conflicting leases, operating agreements, private claims or other existing or future obligations or conditions which may affect all or any portion of the leased tract, it shall not relieve the Lessee of the obligation to pay any bonus due thereon to the Louisiana State Mineral Board, nor shall the Louisiana State Mineral Board be obligated to refund any consideration paid by the Lessee prior to such modification, cancellation, or abrogation, including, but not limited to, bonuses, rents and royalties.

NOTE: The State of Louisiana does hereby reserve, and this lease shall be subject to, the imprescriptible right of surface use in the nature of a servitude in favor of the Department of Natural Resources, including its Offices and Commissions, for the sole purpose of implementing, constructing, servicing and maintaining approved coastal zone management and/or restoration projects. Utilization of any and all rights derived under this lease by the mineral lessee, its agents, successors or assigns,

shall not interfere with nor hinder the reasonable surface use by the Department of Natural Resources, its Offices or Commissions, as hereinabove reserved.

Applicant: Jesse B. Newton, III

| Bidder | Cash Payment | Price / Acre | Rental | Oil | Gas | Other |
|--------|--------------|--------------|--------|-----|-----|-------|
| | | | | | | |
| | | | | | | |
| | | | | | | |
| | | | | | | |



T13S-R9E

T13S-R8E

T13S

TR 34470
351.47 ± ACS.
JUNE, 2002

P.O.B.
X = 2,312,487.49
Y = 464,966.13

St. Charles Parish
Scale: 1" = 3000'

X = 2,821,431.79
Y = 460,633.03

T13S-R21E

TRACT 34471 - St. Charles Parish, Louisiana

All of the lands now or formerly constituting the beds and bottoms of all water bodies of every nature and description and all islands and other lands formed by accretion or reliction, except tax lands, owned by and not under mineral lease from the State of Louisiana on June 12, 2002, situated in St. Charles Parish, Louisiana, within the following described boundaries: Beginning at a point having Coordinates of X = 2,328,194.65 and Y = 474,230.18 thence South 00 degrees 06 minutes 30.3 seconds West 5,347.78 feet to a point having Coordinates of X = 2,328,184.53 and Y = 468,882.41; thence South 39 degrees 18 minutes 10.5 seconds West 10,660.76 feet to a point having Coordinates of X = 2,321,431.79 and Y = 460,633.03; thence North 21 degrees 09 minutes 38.2 seconds West 4,444.72 feet to a point having Coordinates of X = 2,319,827.32 and Y = 464,778.05; thence North 41 degrees 30 minutes 58.6 seconds East 12,623.59 feet to the point of beginning, **LESS AND EXCEPT** all lands and or Tax Adjudicated Lands situated in the confines of State Lease No. 12150, as amended, containing approximately **605.77 acres**, as shown outlined on a plat on file in the Office of Mineral Resources, Department of Natural Resources, as provided by the applicant. All bearings, distances and coordinates are based on Louisiana Coordinate System of 1927 (South Zone).

NOTE: The above description of the tract nominated for lease has been provided exclusively by the party nominating the tract for lease.

Maps depicting the nominated tract, containing the bearings, distances and coordinates of the nominated tract based on the Louisiana Coordinate System of 1927, North or South Zone, as applicable, are available for public inspection and review at the offices of the Louisiana State Mineral Board from 10:00 a.m. to 3:00 p.m. Monday - Friday.

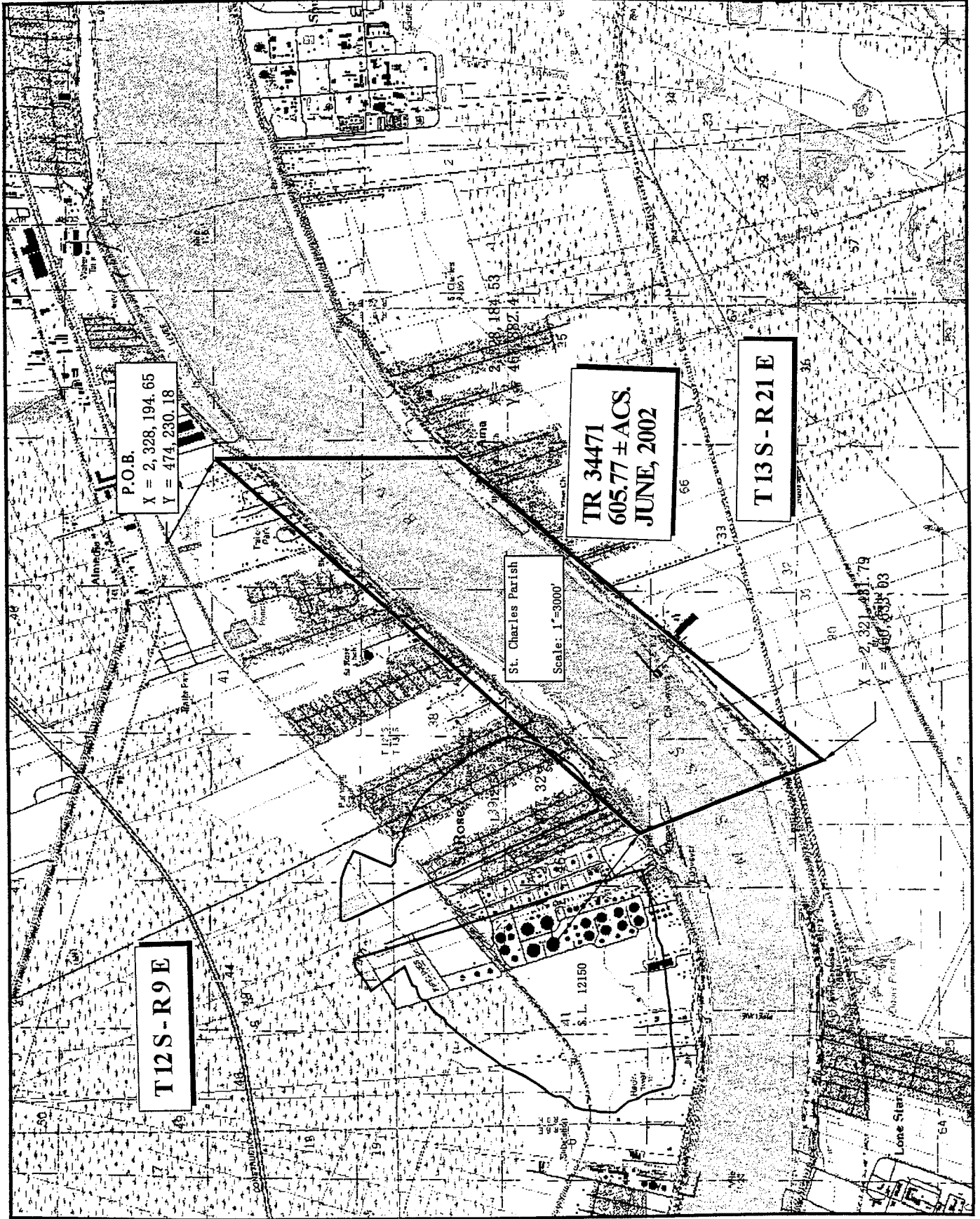
Any mineral lease selected from the nominated tract and awarded by the Louisiana State Mineral Board shall be without warranty of any kind, either express, implied, or statutory, including, but not limited to, the implied warranties or merchantability and fitness for a particular purpose. Should the mineral lease awarded by the Louisiana State Mineral Board be subsequently modified, cancelled or abrogated due to the existence of conflicting leases, operating agreements, private claims or other existing of future obligations or conditions which may affect all or any portion of the leased tract, it shall not relieve the Lessee of the obligation to pay any bonus due thereon to the Louisiana State Mineral Board, nor shall the Louisiana State Mineral Board be obligated to refund any consideration paid by the Lessee prior to such modification, cancellation, or abrogation, including, but not limited to, bonuses, rents and royalties.

NOTE: The State of Louisiana does hereby reserve, and this lease shall be subject to, the imprescriptible right of surface use in the nature of a servitude in favor of the Department of Natural Resources, including its Offices and Commissions, for the sole purpose of implementing, constructing, servicing and maintaining approved coastal zone management and/or restoration projects. Utilization of any and all rights derived under this lease by the mineral lessee, its agents, successors or assigns,

shall not interfere with nor hinder the reasonable surface use by the Department of Natural Resources, its Offices or Commissions, as hereinabove reserved.

Applicant: Jesse B. Newton, III

| Bidder | Cash Payment | Price / Acre | Rental | Oil | Gas | Other |
|--------|--------------|--------------|--------|-----|-----|-------|
| | | | | | | |
| | | | | | | |
| | | | | | | |
| | | | | | | |



P.O.B.
 X = 2,328,194.65
 Y = 474,230.18

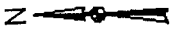
TR 34471
 605.77 ± ACS.
 JUNE, 2002

T13S-R21E

St. Charles Parish
 Scale: 1"=3000'

T12S-R9E

X = 2,321,081.79
 Y = 467,351.03



TRACT 34472 - Jefferson and St. Charles Parishes, Louisiana

All of the lands now or formerly constituting the beds and bottoms of all water bodies of every nature and description and all islands and other lands formed by accretion or reliction, except tax lands, owned by and not under mineral lease from the State of Louisiana on June 12, 2002, situated in Jefferson and St. Charles Parishes, Louisiana, within the following described boundaries: Beginning at a point having Coordinates of X = 2,328,202.12 and Y = 478,176.76 thence North 89 degrees 59 minutes 59.7 seconds East 6,318.53 feet to a point having Coordinates of X = 2,334,520.65 and Y = 478,176.77; thence South 46 degrees 42 minutes 28.8 seconds East 9,203.10 feet to a point having Coordinates of X = 2,341,219.30 and Y = 471,866.05; thence South 77 degrees 06 minutes 25.9 seconds West 13,371.89 to a point having Coordinates of X = 2,328,184.53 and Y = 468,882.41; thence North 00 degrees 06 minutes and 30.4 seconds East 9,294.37 feet to the point of beginning, containing approximately **740.69 acres**, as shown outlined on a plat on file in the Office of Mineral Resources, Department of Natural Resources, as provided by the applicant. All bearings, distances and coordinates are based on Louisiana Coordinate System of 1927 (South Zone).

NOTE: The above description of the tract nominated for lease has been provided exclusively by the party nominating the tract for lease.

Maps depicting the nominated tract, containing the bearings, distances and coordinates of the nominated tract based on the Louisiana Coordinate System of 1927, North or South Zone, as applicable, are available for public inspection and review at the offices of the Louisiana State Mineral Board from 10:00 a.m. to 3:00 p.m. Monday - Friday.

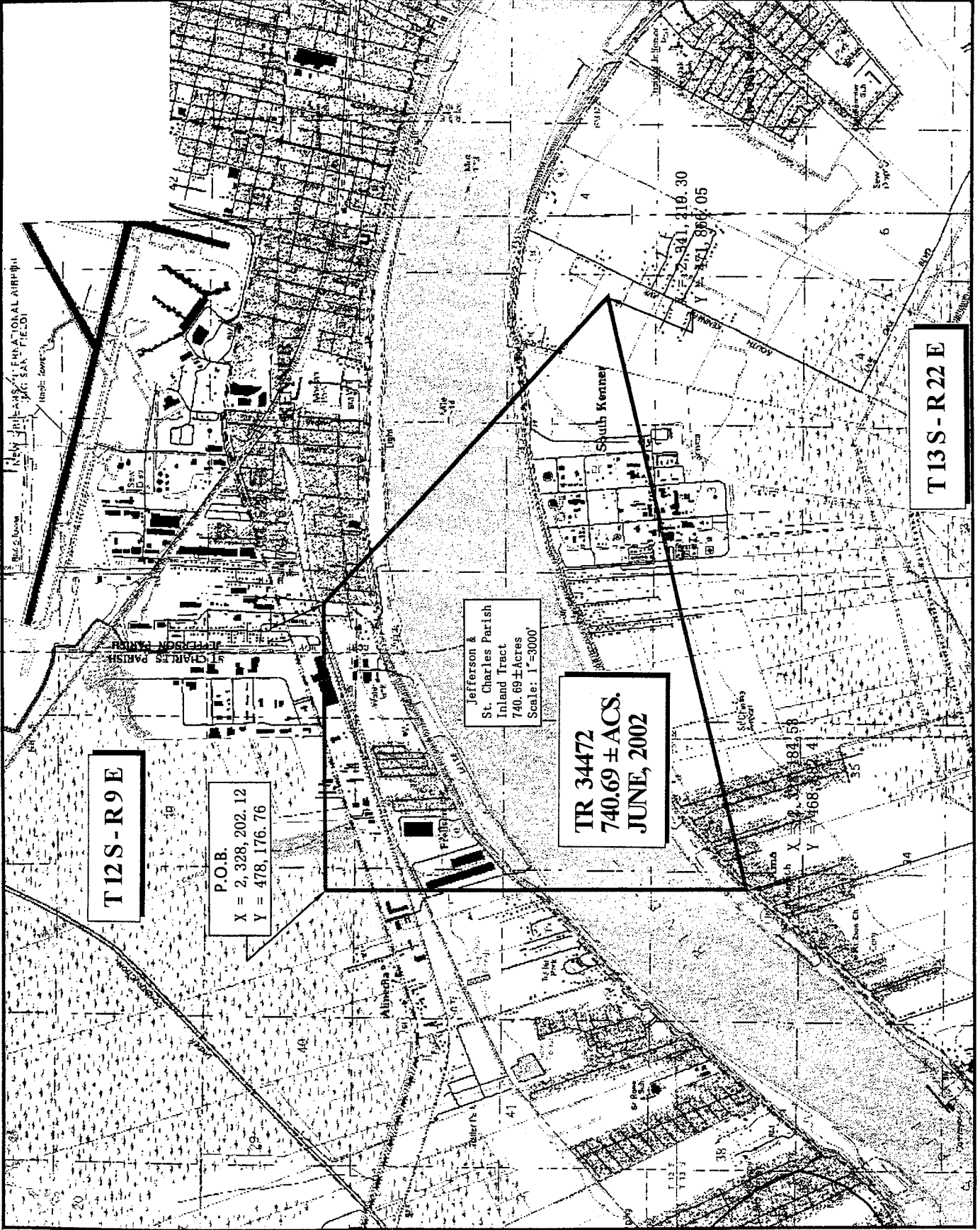
Any mineral lease selected from the nominated tract and awarded by the Louisiana State Mineral Board shall be without warranty of any kind, either express, implied, or statutory, including, but not limited to, the implied warranties or merchantability and fitness for a particular purpose. Should the mineral lease awarded by the Louisiana State Mineral Board be subsequently modified, cancelled or abrogated due to the existence of conflicting leases, operating agreements, private claims or other existing or future obligations or conditions which may affect all or any portion of the leased tract, it shall not relieve the Lessee of the obligation to pay any bonus due thereon to the Louisiana State Mineral Board, nor shall the Louisiana State Mineral Board be obligated to refund any consideration paid by the Lessee prior to such modification, cancellation, or abrogation, including, but not limited to, bonuses, rents and royalties.

NOTE: The State of Louisiana does hereby reserve, and this lease shall be subject to, the imprescriptible right of surface use in the nature of a servitude in favor of the Department of Natural Resources, including its Offices and Commissions, for the sole purpose of implementing, constructing, servicing and maintaining approved coastal zone management and/or restoration projects. Utilization of any and all rights derived under this lease by the mineral lessee, its agents, successors or assigns, shall not interfere with nor hinder the reasonable surface use by the

Department of Natural Resources, its Offices or Commissions, as hereinabove reserved.

Applicant: Jesse B. Newton, III

| Bidder | Cash Payment | Price / Acre | Rental | Oil | Gas | Other |
|--------|--------------|--------------|--------|-----|-----|-------|
| | | | | | | |
| | | | | | | |
| | | | | | | |
| | | | | | | |



T12S-R9E

P.O.B.
X = 2,328, 202.12
Y = 478, 176.76

Jefferson &
St. Charles Parish
Inland Tract
740.69 ± Acres
Scale: 1"=3000'

TR 34472
740.69 ± ACS.
JUNE, 2002

T13S-R22E



TRACT 34473 - Jefferson Parish, Louisiana

All of the lands now or formerly constituting the beds and bottoms of all water bodies of every nature and description and all islands and other lands formed by accretion or reliction, except tax lands, owned by and not under mineral lease from the State of Louisiana on June 12, 2002, situated in Jefferson Parish, Louisiana, within the following described boundaries: Beginning at a point having Coordinates of X = 2,334,520.65 and Y = 478,176.77 thence East 11,394.98 feet to a point having Coordinates of X = 2,345,915.63 and Y = 478,176.77; thence South 44 degrees 23 minutes 22 seconds East 5,985.59 feet to a point having Coordinates of X = 2,350,102.74 and Y = 473,899.46; thence South 77 degrees 06 minutes 25.8 seconds West 9,113.19 to a point having Coordinates of X = 2,341,219.30 and Y = 471,866.05; thence North 46 degrees 42 minutes 28.8 seconds West 9,203.10 feet to the point of beginning, containing approximately **614.74 acres**, as shown outlined on a plat on file in the Office of Mineral Resources, Department of Natural Resources, as provided by the applicant. All bearings, distances and coordinates are based on Louisiana Coordinate System of 1927 (South Zone).

NOTE: The above description of the tract nominated for lease has been provided exclusively by the party nominating the tract for lease.

Maps depicting the nominated tract, containing the bearings, distances and coordinates of the nominated tract based on the Louisiana Coordinate System of 1927, North or South Zone, as applicable, are available for public inspection and review at the offices of the Louisiana State Mineral Board from 10:00 a.m. to 3:00 p.m. Monday - Friday.

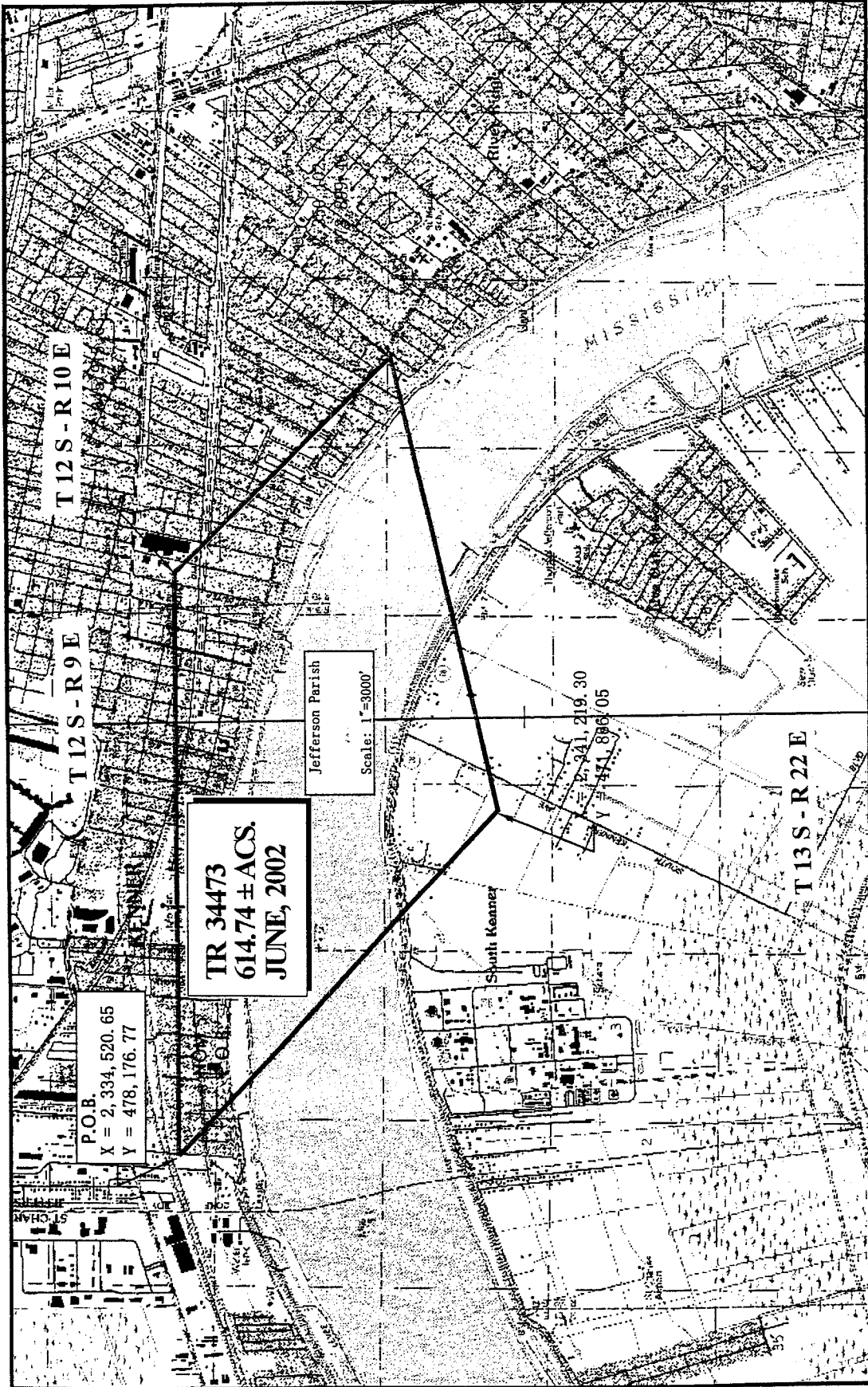
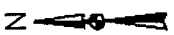
Any mineral lease selected from the nominated tract and awarded by the Louisiana State Mineral Board shall be without warranty of any kind, either express, implied, or statutory, including, but not limited to, the implied warranties or merchantability and fitness for a particular purpose. Should the mineral lease awarded by the Louisiana State Mineral Board be subsequently modified, cancelled or abrogated due to the existence of conflicting leases, operating agreements, private claims or other existing or future obligations or conditions which may affect all or any portion of the leased tract, it shall not relieve the Lessee of the obligation to pay any bonus due thereon to the Louisiana State Mineral Board, nor shall the Louisiana State Mineral Board be obligated to refund any consideration paid by the Lessee prior to such modification, cancellation, or abrogation, including, but not limited to, bonuses, rents and royalties.

NOTE: The State of Louisiana does hereby reserve, and this lease shall be subject to, the imprescriptible right of surface use in the nature of a servitude in favor of the Department of Natural Resources, including its Offices and Commissions, for the sole purpose of implementing, constructing, servicing and maintaining approved coastal zone management and/or restoration projects. Utilization of any and all rights derived under this lease by the mineral lessee, its agents, successors or assigns, shall not interfere with nor hinder the reasonable surface use by the

Department of Natural Resources, its Offices or Commissions, as hereinabove reserved.

Applicant: Jesse B. Newton, III

| Bidder | Cash Payment | Price / Acre | Rental | Oil | Gas | Other |
|--------|--------------|--------------|--------|-----|-----|-------|
| | | | | | | |
| | | | | | | |
| | | | | | | |
| | | | | | | |



TRACT 34474 - Jefferson Parish, Louisiana

All of the lands now or formerly constituting the beds and bottoms of all water bodies of every nature and description and all islands and other lands formed by accretion or reliction, except tax lands, owned by and not under mineral lease from the State of Louisiana on June 12, 2002, situated in Jefferson Parish, Louisiana, within the following described boundaries: Beginning at a point having Coordinates of X = 2,341,219.30 and Y = 471,866.05; thence North 77 degrees 06 minutes 25.8 seconds East 9,113.19 feet to a point having Coordinates of X = 2,350,102.74 and Y = 473,899.46; thence South 44 degrees 23 minutes 22.2 seconds East 7,181.86 feet to a point having Coordinates of X = 2,355,126.68 and Y = 468,767.30; thence South 44 degrees 01 minutes 54 seconds West 9,959.43 to a point having Coordinates of X = 2,348,204.32 and Y = 461,606.91; thence North 27 degrees 17 minutes and 36.1 seconds West 8,055.21 feet to a point having Coordinates of X = 2,344,510.63 and Y = 468,765.34; thence North 46 degrees 42 minutes 29.3 seconds West 4,521.86 feet to the point of beginning, containing approximately 454.63 acres, as shown outlined on a plat on file in the Office of Mineral Resources, Department of Natural Resources, as provided by the applicant. All bearings, distances and coordinates are based on Louisiana Coordinate System of 1927 (South Zone).

NOTE: The above description of the tract nominated for lease has been provided exclusively by the party nominating the tract for lease.

Maps depicting the nominated tract, containing the bearings, distances and coordinates of the nominated tract based on the Louisiana Coordinate System of 1927, North or South Zone, as applicable, are available for public inspection and review at the offices of the Louisiana State Mineral Board from 10:00 a.m. to 3:00 p.m. Monday - Friday.

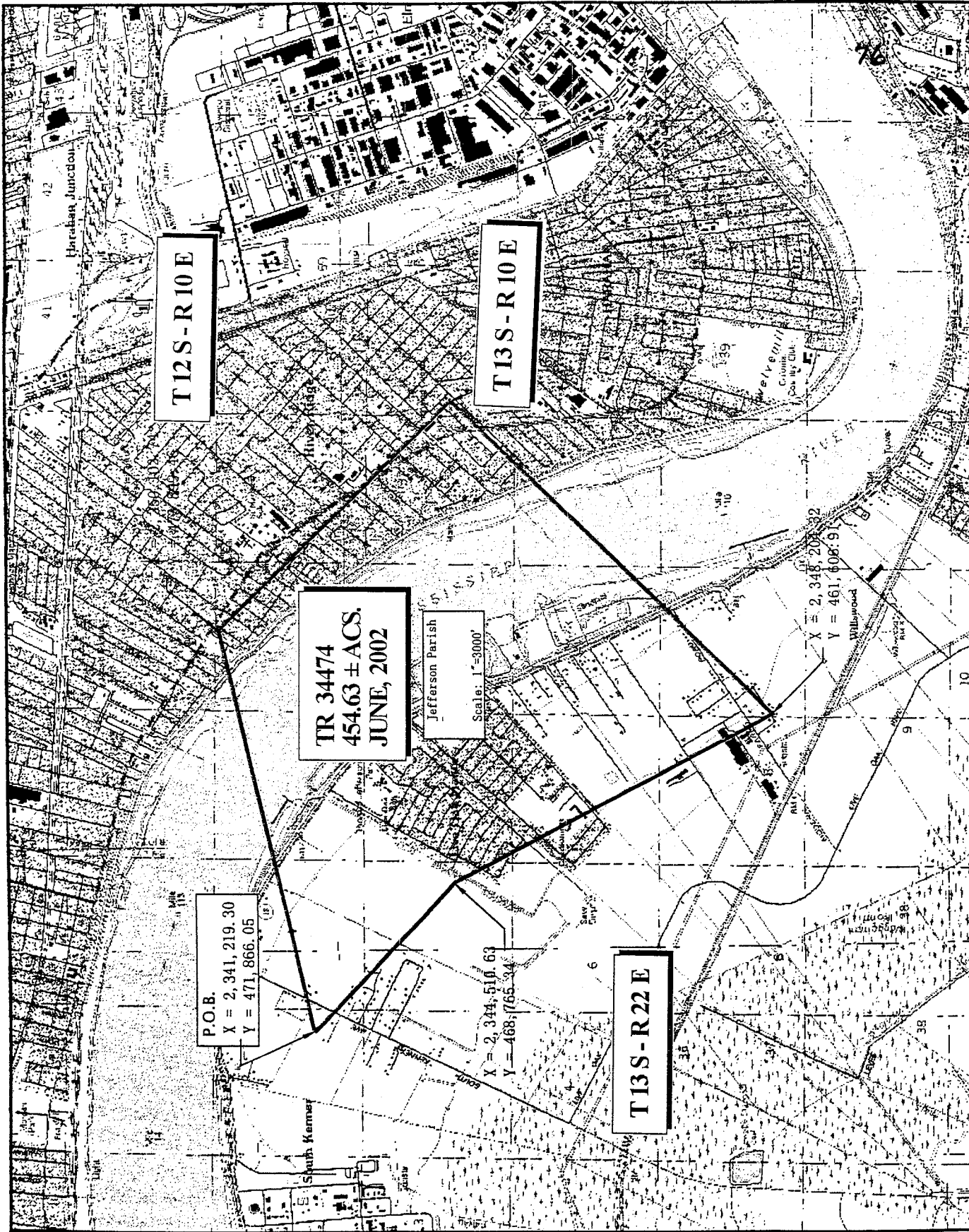
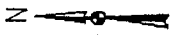
Any mineral lease selected from the nominated tract and awarded by the Louisiana State Mineral Board shall be without warranty of any kind, either express, implied, or statutory, including, but not limited to, the implied warranties or merchantability and fitness for a particular purpose. Should the mineral lease awarded by the Louisiana State Mineral Board be subsequently modified, cancelled or abrogated due to the existence of conflicting leases, operating agreements, private claims or other existing of future obligations or conditions which may affect all or any portion of the leased tract, it shall not relieve the Lessee of the obligation to pay any bonus due thereon to the Louisiana State Mineral Board, nor shall the Louisiana State Mineral Board be obligated to refund any consideration paid by the Lessee prior to such modification, cancellation, or abrogation, including, but not limited to, bonuses, rents and royalties.

NOTE: The State of Louisiana does hereby reserve, and this lease shall be subject to, the imprescriptible right of surface use in the nature of a servitude in favor of the Department of Natural Resources, including its Offices and Commissions, for the sole purpose of implementing, constructing, servicing and maintaining approved coastal zone management and/or restoration projects. Utilization of any and all rights derived under this lease by the mineral lessee, its agents, successors or assigns,

shall not interfere with nor hinder the reasonable surface use by the Department of Natural Resources, its Offices or Commissions, as hereinabove reserved.

Applicant: Jesse B. Newton, III

| Bidder | Cash Payment | Price / Acre | Rental | Oil | Gas | Other |
|--------|-----------------|-----------------|--------|-----|-----|-------|
| | | | | | | |
| | | | | | | |
| | | | | | | |
| | | | | | | |



T12S-R10E

T13S-R10E

TR 34474
454.63 ± ACS.
JUNE, 2002

Jefferson Parish
Scale: 1"=3000'

P.O.B.
X = 2,341,219.30
Y = 471,866.05

X = 2,344,510.63
Y = 468,765.34

T13S-R22E

X = 2,348,203.22
Y = 461,408.91

TRACT 34475 - Jefferson Parish, Louisiana

All of the lands now or formerly constituting the beds and bottoms of all water bodies of every nature and description and all islands and other lands formed by accretion or reliction, except tax lands, owned by and not under mineral lease from the State of Louisiana on June 12, 2002, situated in Jefferson Parish, Louisiana, within the following described boundaries: Beginning at a point having Coordinates of X = 2,355,126.68 and Y = 468,767.30; thence South 13 degrees 29 minutes 41.9 seconds East 14,407.86 feet to a point having Coordinates of X = 2,358,488.90 and Y = 454,757.24; thence North 56 degrees 20 minutes 09 seconds West 12,356.80 feet to a point having Coordinates of X = 2,348,204.32 and Y = 461,606.91; thence North 44 degrees 01 minutes 54 seconds East 9,959.43 feet to the point of beginning, containing approximately **481.90 acres**, as shown outlined on a plat on file in the Office of Mineral Resources, Department of Natural Resources, as provided by the applicant. All bearings, distances and coordinates are based on Louisiana Coordinate System of 1927 (South Zone).

NOTE: The above description of the tract nominated for lease has been provided exclusively by the party nominating the tract for lease.

Maps depicting the nominated tract, containing the bearings, distances and coordinates of the nominated tract based on the Louisiana Coordinate System of 1927, North or South Zone, as applicable, are available for public inspection and review at the offices of the Louisiana State Mineral Board from 10:00 a.m. to 3:00 p.m. Monday - Friday.

Any mineral lease selected from the nominated tract and awarded by the Louisiana State Mineral Board shall be without warranty of any kind, either express, implied, or statutory, including, but not limited to, the implied warranties or merchantability and fitness for a particular purpose. Should the mineral lease awarded by the Louisiana State Mineral Board be subsequently modified, cancelled or abrogated due to the existence of conflicting leases, operating agreements, private claims or other existing or future obligations or conditions which may affect all or any portion of the leased tract, it shall not relieve the Lessee of the obligation to pay any bonus due thereon to the Louisiana State Mineral Board, nor shall the Louisiana State Mineral Board be obligated to refund any consideration paid by the Lessee prior to such modification, cancellation, or abrogation, including, but not limited to, bonuses, rents and royalties.

NOTE: The State of Louisiana does hereby reserve, and this lease shall be subject to, the imprescriptible right of surface use in the nature of a servitude in favor of the Department of Natural Resources, including its Offices and Commissions, for the sole purpose of implementing, constructing, servicing and maintaining approved coastal zone management and/or restoration projects. Utilization of any and all rights derived under this lease by the mineral lessee, its agents, successors or assigns, shall not interfere with nor hinder the reasonable surface use by the Department of Natural Resources, its Offices or Commissions, as hereinabove reserved.

Applicant: Jesse B. Newton, III

| Bidder | Cash Payment | Price / Acre | Rental | Oil | Gas | Other |
|--------|-----------------|-----------------|--------|-----|-----|-------|
| | | | | | | |
| | | | | | | |
| | | | | | | |
| | | | | | | |