

TRACT 34498 - PORTION OF BLOCK 35, BRETON SOUND AREA, Plaquemines Parish, Louisiana

All of the lands now or formerly constituting the beds and bottoms of all water bodies of every nature and description and all islands and other lands formed by accretion or reliction, except tax lands, belonging to the State of Louisiana and not under mineral lease on June 12, 2002, situated in Plaquemines Parish, Louisiana, and more particularly described as follows: Beginning at the Southeast corner of said Block 35 having Coordinates of X = 2,679,600.00 and Y = 307,580.00; thence West along the South line of said Block 35 14,750.00 feet to its Southwest corner having Coordinates of X = 2,664,850.00 and Y = 307,580.00; thence North along the West line of said Block 35 4,875.00 feet to the most Southern Southwest corner of State Lease No. 14561, as amended having Coordinates of X = 2,664,850.00 and Y = 312,455.00; thence along the boundaries of said State Lease No. 14561 the following: East 3,999.40 feet to X = 2,668,849.40 and Y = 312,455.00, North 2,500.00 feet to X = 2,668,849.40 and Y = 314,955.00 and East 3,250.60 feet to X = 2,672,100.00 and Y = 314,955.00; thence continue East 7,500.00 feet to a point on the East line of said Block 35 having Coordinates of X = 2,679,600.00 and Y = 314,955.00; thence South along the East line of said Block 35 7,375.00 to the point of beginning, contain approximately **2,267.74 acres**, as shown outlined on a plat on file in the Office of Mineral Resources, Department of Natural Resources, as provided by the applicant. All bearings, distances and coordinates are based on Louisiana Coordinate System of 1927 (South Zone).

NOTE: The above description of the tract nominated for lease has been provided exclusively by the party nominating the tract for lease.

Maps depicting the nominated tract, containing the bearings, distances and coordinates of the nominated tract based on the Louisiana Coordinate System of 1927, North or South Zone, as applicable, are available for public inspection and review at the offices of the Louisiana State Mineral Board from 10:00 a.m. to 3:00 p.m. Monday - Friday.

Any mineral lease selected from the nominated tract and awarded by the Louisiana State Mineral Board shall be without warranty of any kind, either express, implied, or statutory, including, but not limited to, the implied warranties or merchantability and fitness for a particular purpose. Should the mineral lease awarded by the Louisiana State Mineral Board be subsequently modified, cancelled or abrogated due to the existence of conflicting leases, operating agreements, private claims or other existing or future obligations or conditions which may affect all or any portion of the leased tract, it shall not relieve the Lessee of the obligation to pay any bonus due thereon to the Louisiana State Mineral Board, nor shall the Louisiana State Mineral Board be obligated to refund any consideration paid by the Lessee prior to such modification, cancellation, or abrogation, including, but not limited to, bonuses, rents and royalties.

NOTE: The State of Louisiana does hereby reserve, and this lease shall be subject to, the imprescriptible right of surface use in the nature of a servitude in favor of the Department of Natural Resources, including its

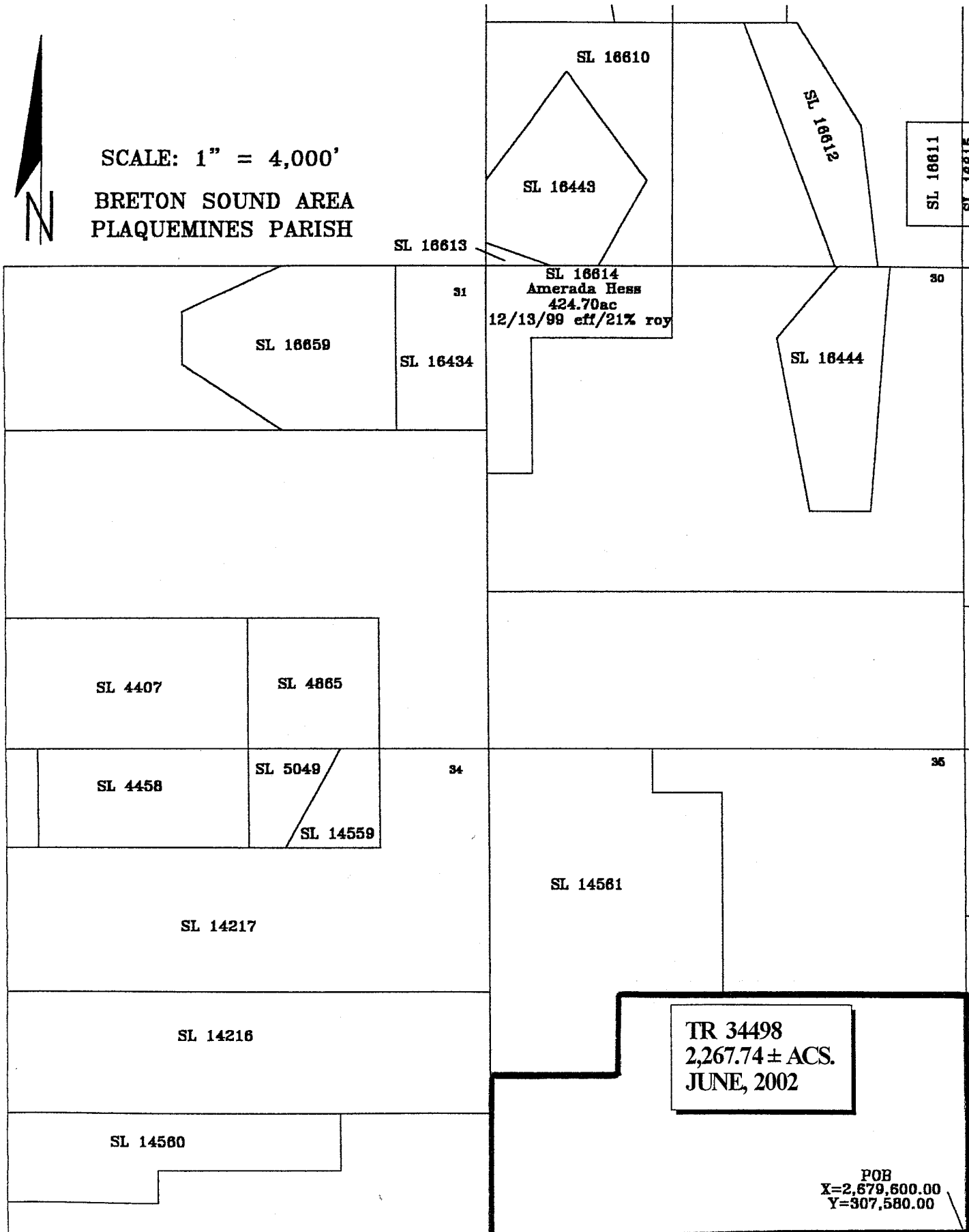
Offices and Commissions, for the sole purpose of implementing, constructing, servicing and maintaining approved coastal zone management and/or restoration projects. Utilization of any and all rights derived under this lease by the mineral lessee, its agents, successors or assigns, shall not interfere with nor hinder the reasonable surface use by the Department of Natural Resources, its Offices or Commissions, as hereinabove reserved.

Applicant: Andrew Barker

Bidder	Cash Payment	Price / Acre	Rental	Oil	Gas	Other



SCALE: 1" = 4,000'
BRETON SOUND AREA
PLAQUEMINES PARISH



SL 16610
SL 16443

SL 16812

SL 16811
ST TRAK

SL 16613

SL 16614
Amerada Hess
424.70ac
12/13/99 eff/21% roy

30

SL 16659

31

SL 16434

SL 16444

SL 4407

SL 4865

SL 4458

SL 5049

34

SL 14559

35

SL 14217

SL 14561

SL 14216

TR 34498
2,267.74 ± ACS.
JUNE, 2002

SL 14560

POB
X=2,679,600.00
Y=307,580.00

TRACT 34499 - PORTION OF BLOCK 36, BRETON SOUND AREA, Plaquemines Parish, Louisiana

All of the lands now or formerly constituting the beds and bottoms of all water bodies of every nature and description and all islands and other lands formed by accretion or reliction, except tax lands, belonging to the State of Louisiana and not under mineral lease on June 12, 2002, situated in Plaquemines Parish, Louisiana, and more particularly described as follows: Beginning at the Southwest corner of said Block 36 having Coordinates of X = 2,679,600.00 and Y = 307,580.00; thence North along the West line of said Block 36 9,700.00 feet to the most North Southwest corner of State Lease No. 1230, as amended having Coordinates of X = 2,679,600.00 and Y = 317,280.00; thence along the boundaries of said State Lease No. 1230 the following: East 7,500.00 feet to X = 2,687,100.00 and Y = 317,280.00, South 1,300.00 feet to X = 2,687,100.00 and Y = 315,980.00, Southwest 7,420.00 feet to X = 2,682,600.00 and Y = 310,080.00 and Southwest 2,692.60 feet to a point on the South line of said Block 36 having Coordinates of X = 2,681,600.00 and Y = 307,580.00; thence West 2,000.00 feet to the point of beginning, containing approximately **1,078.40 acres**, as shown outlined on a plat on file in the Office of Mineral Resources, Department of Natural Resources, as provided by the applicant. All bearings, distances and coordinates are based on Louisiana Coordinate System of 1927 (South Zone).

NOTE: The above description of the tract nominated for lease has been provided exclusively by the party nominating the tract for lease.

Maps depicting the nominated tract, containing the bearings, distances and coordinates of the nominated tract based on the Louisiana Coordinate System of 1927, North or South Zone, as applicable, are available for public inspection and review at the offices of the Louisiana State Mineral Board from 10:00 a.m. to 3:00 p.m. Monday - Friday.

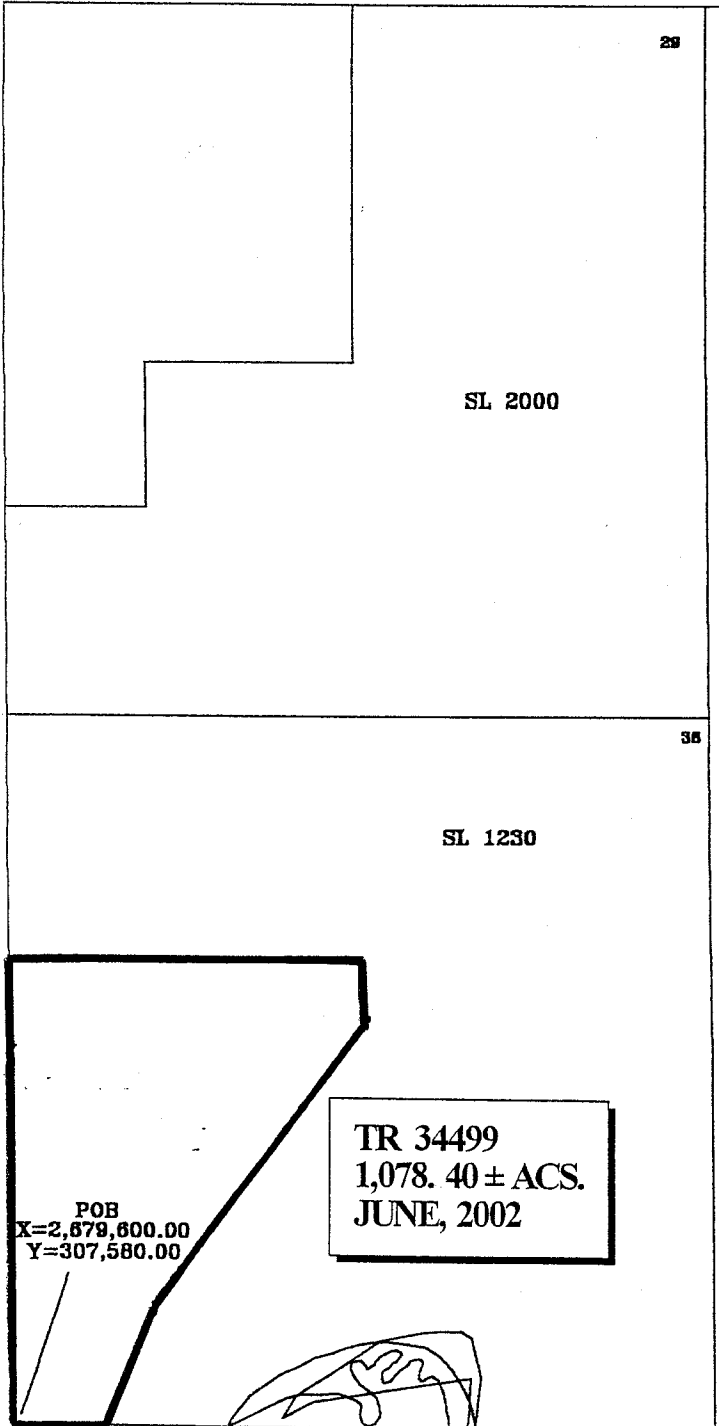
Any mineral lease selected from the nominated tract and awarded by the Louisiana State Mineral Board shall be without warranty of any kind, either express, implied, or statutory, including, but not limited to, the implied warranties or merchantability and fitness for a particular purpose. Should the mineral lease awarded by the Louisiana State Mineral Board be subsequently modified, cancelled or abrogated due to the existence of conflicting leases, operating agreements, private claims or other existing or future obligations or conditions which may affect all or any portion of the leased tract, it shall not relieve the Lessee of the obligation to pay any bonus due thereon to the Louisiana State Mineral Board, nor shall the Louisiana State Mineral Board be obligated to refund any consideration paid by the Lessee prior to such modification, cancellation, or abrogation, including, but not limited to, bonuses, rents and royalties.

NOTE: It appears, according to our records, that a portion of this tract is located within the restrictive safety fairway area as set out by the Corps of Engineers, U.S. Army.

NOTE: The State of Louisiana does hereby reserve, and this lease shall be subject to, the imprescriptible right of surface use in the nature of a servitude in favor of the Department of Natural Resources, including its Offices and Commissions, for the sole purpose of implementing, constructing, servicing and maintaining approved coastal zone management and/or restoration projects. Utilization of any and all rights derived under this lease by the mineral lessee, its agents, successors or assigns, shall not interfere with nor hinder the reasonable surface use by the Department of Natural Resources, its Offices or Commissions, as hereinabove reserved.

Applicant: Andrew Barker

Bidder	Cash Payment	Price / Acre	Rental	Oil	Gas	Other



SCALE: 1" = 4,000'
BRETON SOUND AREA
PLAQUEMINES PARISH

TRACT 34500 - PORTION OF BLOCK 47, BRETON SOUND AREA, Plaquemines Parish, Louisiana

All of the lands now or formerly constituting the beds and bottoms of all water bodies of every nature and description and all islands and other lands formed by accretion or reliction, except tax lands, belonging to the State of Louisiana and not under mineral lease on June 12, 2002, situated in Plaquemines Parish, Louisiana, and more particularly described as follows: Beginning at the Northeast corner of said Block 47 having Coordinates of X = 2,664,850.00 and Y = 307,580.00; thence South along the East line of said Block 47 8,300.00 feet to the Northeast corner of State Lease No. 16569 having Coordinates of X = 2,664,850.00 and Y = 299,280.00; thence along the boundaries of said State Lease No. 16569 the following: North 75 degrees 24 minutes 12 seconds West 4,960.09 feet to X = 2,660,050.00 and Y = 300,530.00 and West 2,575.00 feet to its Northwest corner having X = 2,657,475.00 and Y = 300,530.00; thence North 7,050.00 feet to a point on the North line of said Block 47 having Coordinates of X = 2,657,475.00 and Y = 307,580.00; thence East along the North line of said Block 46 7,375.00 feet to the point of beginning, containing approximately **1,262.48 acres**, as shown outlined on a plat on file in the Office of Mineral Resources, Department of Natural Resources, as provided by the applicant. All bearings, distances and coordinates are based on Louisiana Coordinate System of 1927 (South Zone).

NOTE: The above description of the tract nominated for lease has been provided exclusively by the party nominating the tract for lease.

Maps depicting the nominated tract, containing the bearings, distances and coordinates of the nominated tract based on the Louisiana Coordinate System of 1927, North or South Zone, as applicable, are available for public inspection and review at the offices of the Louisiana State Mineral Board from 10:00 a.m. to 3:00 p.m. Monday - Friday.

Any mineral lease selected from the nominated tract and awarded by the Louisiana State Mineral Board shall be without warranty of any kind, either express, implied, or statutory, including, but not limited to, the implied warranties or merchantability and fitness for a particular purpose. Should the mineral lease awarded by the Louisiana State Mineral Board be subsequently modified, cancelled or abrogated due to the existence of conflicting leases, operating agreements, private claims or other existing or future obligations or conditions which may affect all or any portion of the leased tract, it shall not relieve the Lessee of the obligation to pay any bonus due thereon to the Louisiana State Mineral Board, nor shall the Louisiana State Mineral Board be obligated to refund any consideration paid by the Lessee prior to such modification, cancellation, or abrogation, including, but not limited to, bonuses, rents and royalties.

NOTE: The State of Louisiana does hereby reserve, and this lease shall be subject to, the imprescriptible right of surface use in the nature of a servitude in favor of the Department of Natural Resources, including its Offices and Commissions, for the sole purpose of implementing, constructing, servicing and maintaining approved coastal zone management

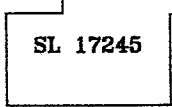
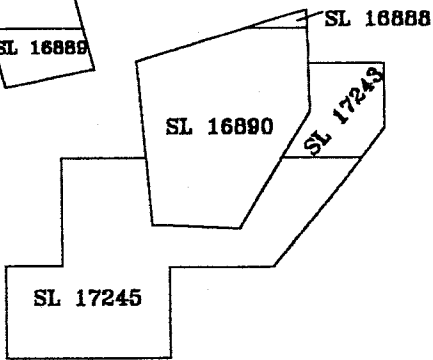
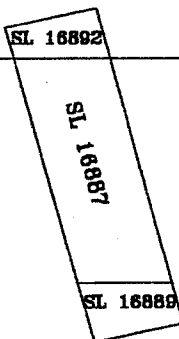
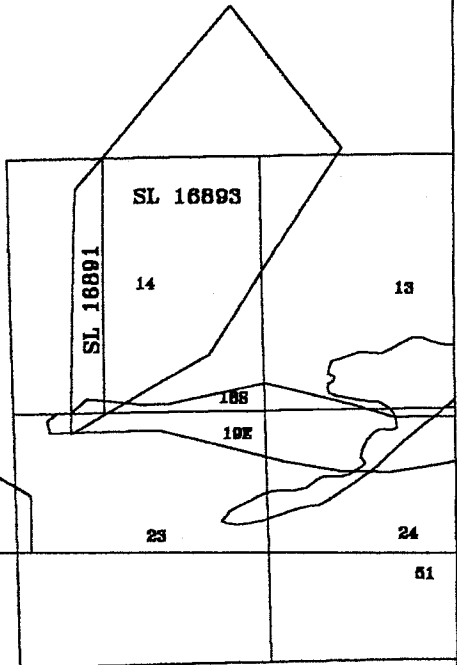
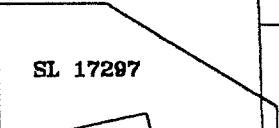
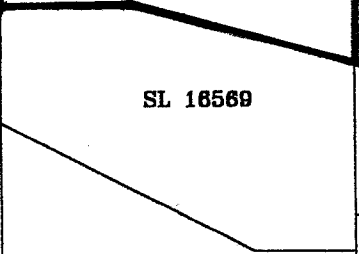
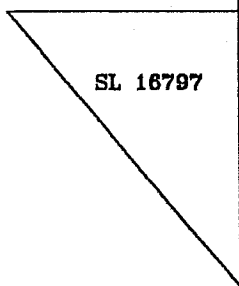
and/or restoration projects. Utilization of any and all rights derived under this lease by the mineral lessee, its agents, successors or assigns, shall not interfere with nor hinder the reasonable surface use by the Department of Natural Resources, its Offices or Commissions, as hereinabove reserved.

Applicant: Andrew Barker

Bidder	Cash Payment	Price / Acre	Rental	Oil	Gas	Other

POB 47 /
X=2,664,850.00
Y=307,580.00

TR 34500
1,262.48 ± ACS.
JUNE, 2002



50

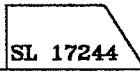
46

13

24

51

SL 17298



SCALE: 1" = 4,000'
BRETON SOUND AREA
PLAQUEMINES PARISH

TRACT 34501 - PORTION OF BLOCK 47, BRETON SOUND AREA, Plaquemines Parish, Louisiana

All of the lands now or formerly constituting the beds and bottoms of all water bodies of every nature and description and all islands and other lands formed by accretion or reliction, except tax lands, belonging to the State of Louisiana and not under mineral lease on June 12, 2002, situated in Plaquemines Parish, Louisiana, and more particularly described as follows: Beginning at the Southeast corner of said Block 47 having Coordinates of X = 2,664,850.00 and Y = 292,830.00; thence West along the South line of said Block 47 14,750.00 feet to the Southwest corner of said Block 47 having Coordinates of X = 2,650,100.00 and Y = 292,830.00; thence North along the West line of said Block 47 7,147.00 feet to a point having Coordinates of X = 2,650,100.00 and Y = 299,977.00; thence East 2,543.00 feet to the Northwest corner of State Lease No. 16797 having Coordinates of X = 2,652,643.00 and Y = 299,977.00; thence along the boundaries of said State Lease No. 16797 the following: South 40 degrees 07 minutes 50 seconds East 7,496.94 feet to X = 2,657,475.00 and Y = 294,245.00 and North 3,835.00 feet to the Southwest corner of State Lease No. 16569 having Coordinates of X = 2,657,475.00 and Y = 298,080.00; thence along the boundaries of said State Lease No. 16569 the following: South 63 degrees 19 minutes 35 seconds East 5,903.23 feet to X = 2,662,750.00 and Y = 295,430.00 and East 2,100.00 feet to its Southeast corner and a point on the East line of said Block 47 having Coordinates of X = 2,664,850.00 and Y = 295,430.00; thence South along the East line of said Block 47 2,600.00 feet to the point of beginning, containing approximately **1,492.77 acres**, as shown outlined on a plat on file in the Office of Mineral Resources, Department of Natural Resources, as provided by the applicant. All bearings, distances and coordinates are based on Louisiana Coordinate System of 1927 (South Zone).

NOTE: The above description of the tract nominated for lease has been provided exclusively by the party nominating the tract for lease.

Maps depicting the nominated tract, containing the bearings, distances and coordinates of the nominated tract based on the Louisiana Coordinate System of 1927, North or South Zone, as applicable, are available for public inspection and review at the offices of the Louisiana State Mineral Board from 10:00 a.m. to 3:00 p.m. Monday - Friday.

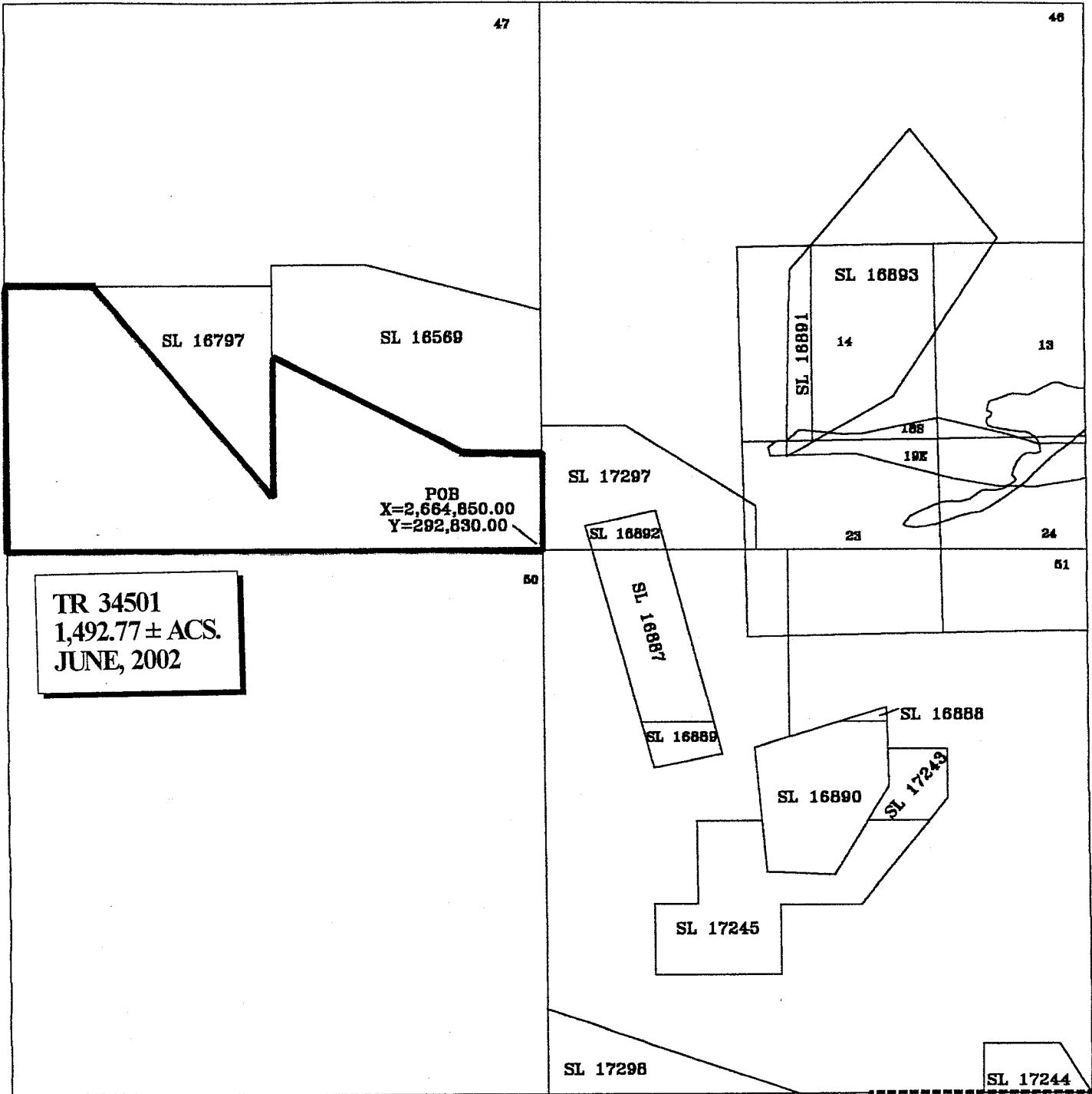
Any mineral lease selected from the nominated tract and awarded by the Louisiana State Mineral Board shall be without warranty of any kind, either express, implied, or statutory, including, but not limited to, the implied warranties or merchantability and fitness for a particular purpose. Should the mineral lease awarded by the Louisiana State Mineral Board be subsequently modified, cancelled or abrogated due to the existence of conflicting leases, operating agreements, private claims or other existing or future obligations or conditions which may affect all or any portion of the leased tract, it shall not relieve the Lessee of the obligation to pay any bonus due thereon to the Louisiana State Mineral Board, nor shall the Louisiana State Mineral Board be obligated to refund any consideration paid by the Lessee prior to such modification,

cancellation, or abrogation, including, but not limited to, bonuses, rents and royalties.

NOTE: The State of Louisiana does hereby reserve, and this lease shall be subject to, the imprescriptible right of surface use in the nature of a servitude in favor of the Department of Natural Resources, including its Offices and Commissions, for the sole purpose of implementing, constructing, servicing and maintaining approved coastal zone management and/or restoration projects. Utilization of any and all rights derived under this lease by the mineral lessee, its agents, successors or assigns, shall not interfere with nor hinder the reasonable surface use by the Department of Natural Resources, its Offices or Commissions, as hereinabove reserved.

Applicant: Andrew Barker

Bidder	Cash Payment	Price / Acre	Rental	Oil	Gas	Other



SCALE: 1" = 4,000'
BRETON SOUND AREA
PLAQUEMINES PARISH

TRACT 34502 - PORTION OF BLOCK 46, BRETON SOUND AREA, Plaquemines Parish, Louisiana

All of the lands now or formerly constituting the beds and bottoms of all water bodies of every nature and description and all islands and other lands formed by accretion or reliction, except tax lands, belonging to the State of Louisiana and not under mineral lease on June 12, 2002, situated in Plaquemines Parish, Louisiana, and more particularly described as follows: Beginning at the Northwest corner of said Block 46 having Coordinates of X = 2,664,850.00 and Y = 307,580.00; thence East along the North line of said Block 46 6,810.00 feet to a point having Coordinates of X = 2,671,660.00 and Y = 307,580.00; thence South 7,210.00 feet to the Northwest corner of State Lease No. 16891 having Coordinates of X = 2,671,660.00 and Y = 300,370.00; thence along the West line of said State Lease No. 16891 South 01 degrees 21 minutes 21 seconds West 5,071.42 feet to its Southwest corner having Coordinates of X = 2,671,540.00 and Y = 295,300.00; thence South 2,470.00 feet to a point on the South line of said Block 46 having Coordinates of X = 2,671,540.00 and Y = 292,830.00; thence West along the South line of said Block 46 866.00 feet to the Southeast corner of State Lease No. 17297 having Coordinates of X = 2,670,674.00 and Y = 292,830.00; thence along the boundaries of said State Lease No. 17297 the following: North 1,170.00 feet to X = 2,670,674.00 and Y = 294,000.00, North 58 degrees 34 minutes 28 seconds West 4,127.42 feet to X = 2,667,152.00 and Y = 296,152.00 and West 2,302.00 feet to the Northwest corner of said State Lease No. 17297 and a point on the West line of said Block 46 having Coordinates of X = 2,664,850.00 and Y = 296,152.00; thence North along the West line of said Block 46 11,428.00 feet to the point of beginning, containing approximately 1,935.01 acres, as shown outlined on a plat on file in the Office of Mineral Resources, Department of Natural Resources, as provided by the applicant. All bearings, distances and coordinates are based on Louisiana Coordinate System of 1927 (South Zone).

NOTE: The above description of the tract nominated for lease has been provided exclusively by the party nominating the tract for lease.

Maps depicting the nominated tract, containing the bearings, distances and coordinates of the nominated tract based on the Louisiana Coordinate System of 1927, North or South Zone, as applicable, are available for public inspection and review at the offices of the Louisiana State Mineral Board from 10:00 a.m. to 3:00 p.m. Monday - Friday.

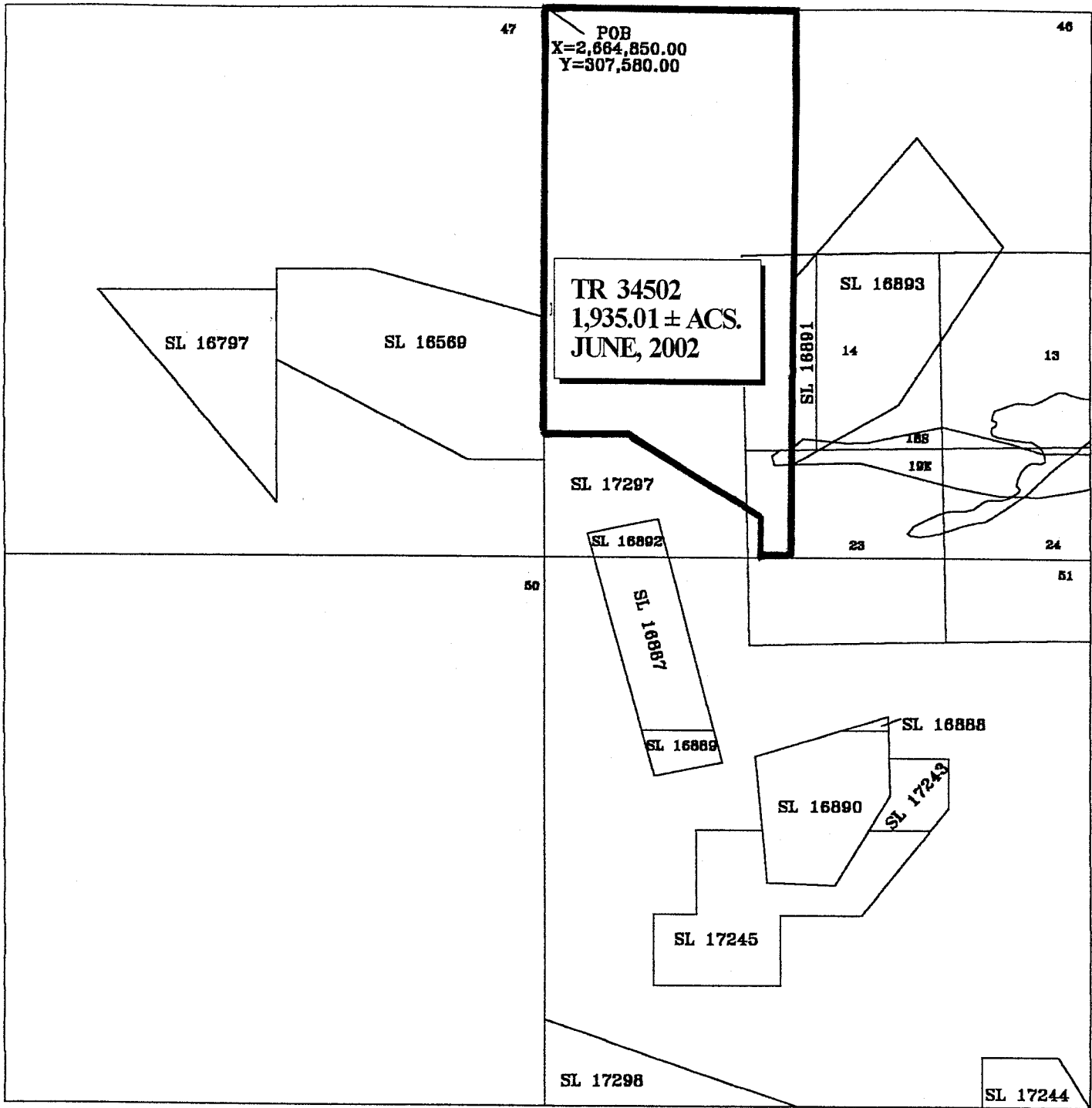
Any mineral lease selected from the nominated tract and awarded by the Louisiana State Mineral Board shall be without warranty of any kind, either express, implied, or statutory, including, but not limited to, the implied warranties or merchantability and fitness for a particular purpose. Should the mineral lease awarded by the Louisiana State Mineral Board be subsequently modified, cancelled or abrogated due to the existence of conflicting leases, operating agreements, private claims or other existing or future obligations or conditions which may affect all or any portion of the leased tract, it shall not relieve the Lessee of the obligation to pay any bonus due thereon to the Louisiana State Mineral Board, nor shall the Louisiana State Mineral Board be obligated to refund

any consideration paid by the Lessee prior to such modification, cancellation, or abrogation, including, but not limited to, bonuses, rents and royalties.

NOTE: The State of Louisiana does hereby reserve, and this lease shall be subject to, the imprescriptible right of surface use in the nature of a servitude in favor of the Department of Natural Resources, including its Offices and Commissions, for the sole purpose of implementing, constructing, servicing and maintaining approved coastal zone management and/or restoration projects. Utilization of any and all rights derived under this lease by the mineral lessee, its agents, successors or assigns, shall not interfere with nor hinder the reasonable surface use by the Department of Natural Resources, its Offices or Commissions, as hereinabove reserved.

Applicant: Andrew Barker

Bidder	Cash Payment	Price / Acre	Rental	Oil	Gas	Other



SCALE: 1" = 4,000'
BRETON SOUND AREA
PLAQUEMINES PARISH

TRACT 34503 - PORTION OF BLOCK 46, BRETON SOUND AREA, Plaquemines Parish, Louisiana

All of the lands now or formerly constituting the beds and bottoms of all water bodies of every nature and description and all islands and other lands formed by accretion or reliction, except tax lands, belonging to the State of Louisiana and not under mineral lease on June 12, 2002, situated in Plaquemines Parish, Louisiana, and more particularly described as follows: Beginning at the Northeast corner of said Block 46 having Coordinates of X = 2,679,600.00 and Y = 307,580.00; thence South along the East line of said Block 46 14,750.00 feet to its Southeast corner having Coordinates of X = 2,679,600.00 and Y = 292,830.00; thence West along the South line of said Block 46 8,060.00 feet to a point having Coordinates of X = 2,671,540.00 and Y = 292,830.00; thence North 2,470.00 feet to the Southwest corner of State Lease 16891 having Coordinates of X = 2,671,540.00 and Y = 295,300.00; thence along the South line of said State Lease No. 16891 North 60 degrees 21 minutes 05 seconds East 788.19 feet to its Southeast corner and the Southwest corner of State Lease No. 16893 having Coordinates of X = 2,672,225.00 and Y = 295,689.90; thence along the boundaries of said State Lease No. 16893 the following: North 60 degrees 21 minutes 05 seconds East 2,537.18 feet to X = 2,674,430.00 and Y = 296,945.00, North 33 degrees 14 minutes 29 seconds east 5,135.29 feet to X = 2,677,245.00 and Y = 301,240.00, north 38 degrees 39 minutes 35 seconds west 3,745.83 feet to X = 2,674,905.00 and Y = 304,165.00 and south 40 degrees 31 minutes 58 seconds west 4,123.81 feet to its most west northwest corner and the northeast corner of said State Lease 16891 having Coordinates of X = 2,672,225.00 and Y = 301,030.76; thence along the north line of said State Lease 16891 south 40 degrees 31 minutes 58 seconds west 869.39 feet to its northwest corner having Coordinates of X = 2,671,660.00 and Y = 300,370.00; thence north 7,210.00 feet to a point on the north line of said Block 46 having Coordinates of X = 2,671,660.00 and Y = 307,580.00; thence east along the north line of said Block 46 7,940.00 feet to the Point of Beginning, estimated to contain **2,078.35 acres**, as shown outlined on a plat on file in the Office of Mineral Resources, Department of Natural Resources, as provided by the applicant. All bearings, distances and coordinates are based on Louisiana Coordinate System of 1927 (South Zone).

NOTE: The above description of the tract nominated for lease has been provided exclusively by the party nominating the tract for lease.

Maps depicting the nominated tract, containing the bearings, distances and coordinates of the nominated tract based on the Louisiana Coordinate System of 1927, North or South Zone, as applicable, are available for public inspection and review at the offices of the Louisiana State Mineral Board from 10:00 a.m. to 3:00 p.m. Monday - Friday.

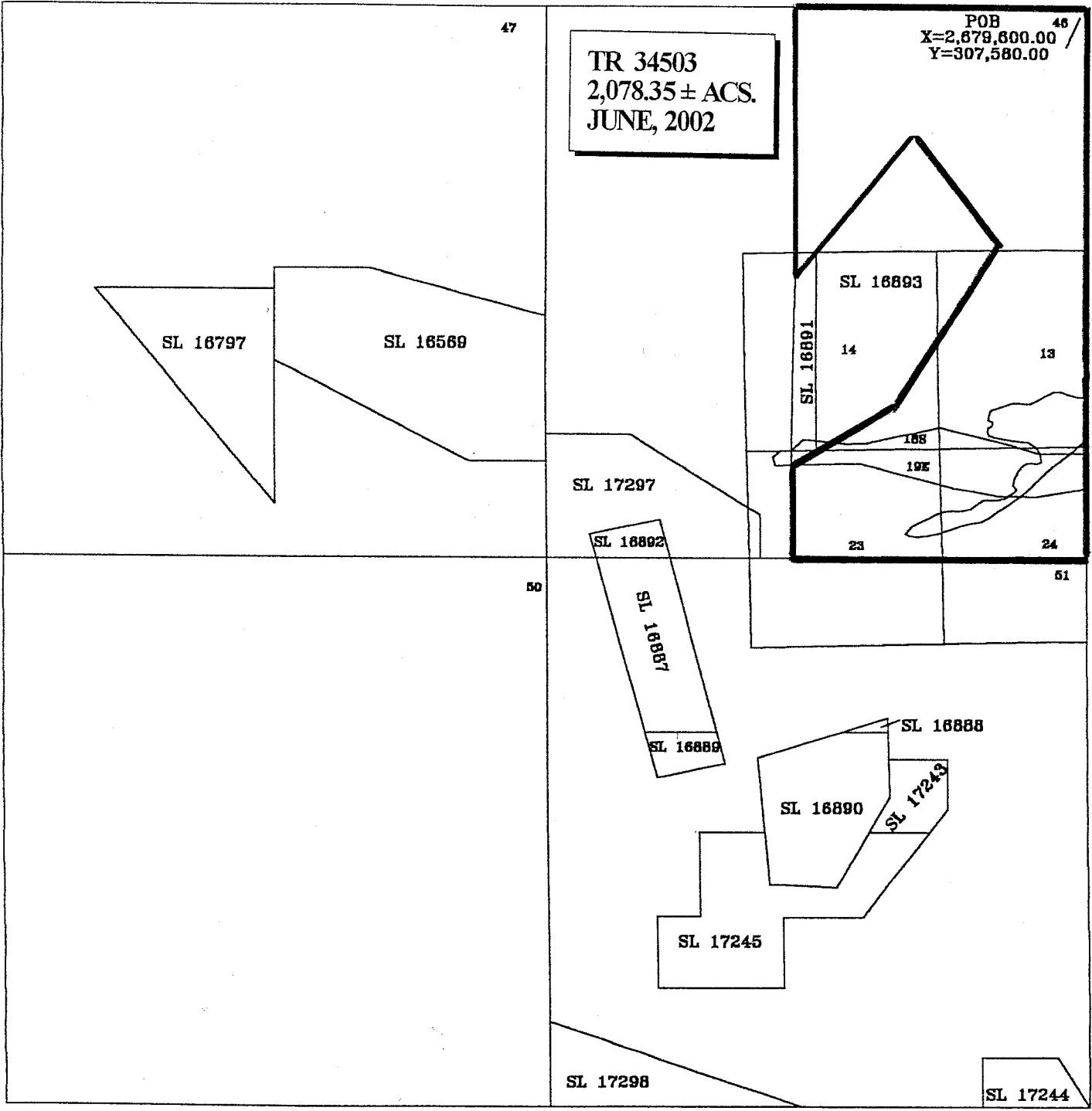
Any mineral lease selected from the nominated tract and awarded by the Louisiana State Mineral Board shall be without warranty of any kind, either express, implied, or statutory, including, but not limited to, the implied warranties or merchantability and fitness for a particular purpose. Should the mineral lease awarded by the Louisiana State Mineral Board be subsequently modified, cancelled or abrogated due to the

existence of conflicting leases, operating agreements, private claims or other existing of future obligations or conditions which may affect all or any portion of the leased tract, it shall not relieve the Lessee of the obligation to pay any bonus due thereon to the Louisiana State Mineral Board, nor shall the Louisiana State Mineral Board be obligated to refund any consideration paid by the Lessee prior to such modification, cancellation, or abrogation, including, but not limited to, bonuses, rents and royalties.

NOTE: The State of Louisiana does hereby reserve, and this lease shall be subject to, the imprescriptible right of surface use in the nature of a servitude in favor of the Department of Natural Resources, including its Offices and Commissions, for the sole purpose of implementing, constructing, servicing and maintaining approved coastal zone management and/or restoration projects. Utilization of any and all rights derived under this lease by the mineral lessee, its agents, successors or assigns, shall not interfere with nor hinder the reasonable surface use by the Department of Natural Resources, its Offices or Commissions, as hereinabove reserved.

Applicant: Andrew Barker

Bidder	Cash Payment	Price / Acre	Rental	Oil	Gas	Other



SCALE: 1" = 4,000'

BRETON SOUND AREA
PLAQUEMINES PARISH

TRACT 34504 - PORTION OF BLOCK 50, BRETON SOUND AREA, Plaquemines Parish, Louisiana

All of the lands now or formerly constituting the beds and bottoms of all water bodies of every nature and description and all islands and other lands formed by accretion or reliction, except tax lands, belonging to the State of Louisiana and not under mineral lease on June 12, 2002, situated in Plaquemines Parish, Louisiana, and more particularly described as follows: Beginning at the Northeast corner of said Block 50 having Coordinates of X = 2,664,850.00 and Y = 292,830.00; thence South along the East line of said Block 50 14,750.00 feet to its Southeast corner having Coordinates of X = 2,664,850.00 and Y = 278,080.00; thence West along the South line of said Block 50 7,375.00 feet to a point having Coordinates of X = 2,657,475.00 and Y = 278,080.00; thence North 14,750.00 feet to a point on the North line of said Block 50 having Coordinates of X = 2,657,475.00 and Y = 292,830.00; thence East along the North line of said Block 50 7,375.00 to the point of beginning, containing approximately **2,497.27 acres**, as shown outlined on a plat on file in the Office of Mineral Resources, Department of Natural Resources, as provided by the applicant. All bearings, distances and coordinates are based on Louisiana Coordinate System of 1927 (South Zone).

NOTE: The above description of the tract nominated for lease has been provided exclusively by the party nominating the tract for lease.

Maps depicting the nominated tract, containing the bearings, distances and coordinates of the nominated tract based on the Louisiana Coordinate System of 1927, North or South Zone, as applicable, are available for public inspection and review at the offices of the Louisiana State Mineral Board from 10:00 a.m. to 3:00 p.m. Monday - Friday.

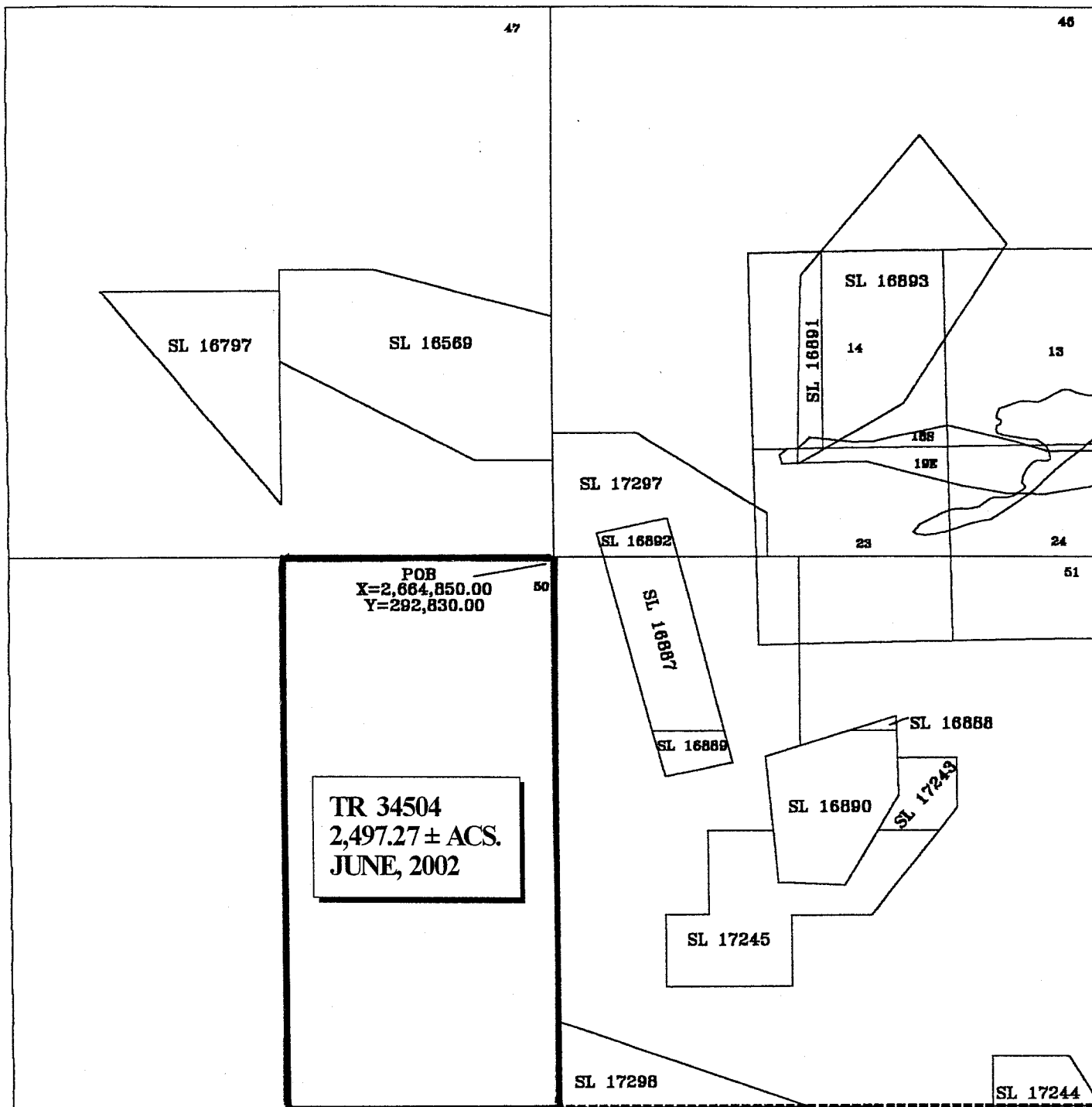
Any mineral lease selected from the nominated tract and awarded by the Louisiana State Mineral Board shall be without warranty of any kind, either express, implied, or statutory, including, but not limited to, the implied warranties or merchantability and fitness for a particular purpose. Should the mineral lease awarded by the Louisiana State Mineral Board be subsequently modified, cancelled or abrogated due to the existence of conflicting leases, operating agreements, private claims or other existing or future obligations or conditions which may affect all or any portion of the leased tract, it shall not relieve the Lessee of the obligation to pay any bonus due thereon to the Louisiana State Mineral Board, nor shall the Louisiana State Mineral Board be obligated to refund any consideration paid by the Lessee prior to such modification, cancellation, or abrogation, including, but not limited to, bonuses, rents and royalties.

NOTE: The State of Louisiana does hereby reserve, and this lease shall be subject to, the imprescriptible right of surface use in the nature of a servitude in favor of the Department of Natural Resources, including its Offices and Commissions, for the sole purpose of implementing, constructing, servicing and maintaining approved coastal zone management and/or restoration projects. Utilization of any and all rights derived under this lease by the mineral lessee, its agents, successors or assigns,

shall not interfere with nor hinder the reasonable surface use by the Department of Natural Resources, its Offices or Commissions, as hereinabove reserved.

Applicant: Andrew Barker

Bidder	Cash Payment	Price / Acre	Rental	Oil	Gas	Other



SCALE: 1" = 4,000'

BRETON SOUND AREA
PLAQUEMINES PARISH