

TRACT 34490 - PORTION OF BLOCK 19, BRETON SOUND AREA, Plaquemines Parish, Louisiana

All of the lands now or formerly constituting the beds and bottoms of all water bodies of every nature and description and all islands and other lands formed by accretion or reliction, except tax lands, belonging to the State of Louisiana and not under mineral lease on June 12, 2002, situated in Plaquemines Parish, Louisiana, and more particularly described as follows: Beginning at the Northeast corner of said Block 19 having Coordinates of X = 2,679,600.00 and Y = 351,830.00; thence South along the East line of said Block 19 10,360.00 feet to the Northeast corner of State Lease No. 16611 having Coordinates of X = 2,679,600.00 and Y = 341,470.00; thence on the boundaries of said State Lease 16611 the following: West 1,700.00 feet to X = 2,677,900.00 and Y = 341,470.00, South 3,150.00 feet to X = 2,677,900.00 and Y = 338,320.00 and East 1,700.00 feet to its Southeast corner and a point on the East line of said Block 19 having Coordinates of X = 2,679,600.00 and Y = 338,320.00; thence South along the East line of said Block 19 1,240.00 feet to its Southeast corner having Coordinates of X = 2,679,600.00 and Y = 337,080.00; thence West along the South line of said Block 19 2,580.00 feet to the Southeast corner of State Lease No. 16612 having Coordinates of X = 2,677,020.00 and Y = 337,080.00; thence along the boundaries of said State Lease No. 16612 the following: North 07 degrees 00 minutes 00 seconds West 4,300.00 feet to X = 2,676,495.96 and Y = 341,347.95, North 32 degrees 29 minutes 06 seconds West 3,683.38 feet to X = 2,674,517.70 and Y = 344,455.00 and West 317.70 feet to a point on the North line of said State Lease No. 16612 and the Southeast corner of State Lease No. 17346 having Coordinates of X = 2,674,200.00 and Y = 344,455.00; thence North along the East line of said State Lease No. 17346 1,375.00 feet to the Southwest corner of State Lease No. 16823 having Coordinates of X = 2,674,200.00 and Y = 345,830.00; thence along the boundaries of said State Lease No. 16823 the following: East 4,000.00 feet to X = 2,678,200.00 and Y = 345,830.00; North 19 degrees 05 minutes 37 seconds West 2,751.36 feet to X = 2,677,300.00 and Y = 348,430.00 and West 3,100.00 feet to the Northwest corner of said State Lease No. 16823 and a point on the East line of said State Lease No. 17346 having Coordinates of X = 2,674,200.00 and Y = 348,430.00; thence along the boundaries of said State Lease No. 17346 the following: North 297.00 feet to X = 2,674,200.00 and Y = 348,727.00, West 3,550.00 to X = 2,670,650.00 and Y = 348,727.00 and South 4,272.00 feet to its Southwest corner and the Northeast corner of State Lease 16610 having Coordinates of X = 2,670,650.00 and Y = 344,455.00; thence West along the North line of said State Lease No. 16610 1,800.00 feet to the Southeast corner of State Lease No. 16824 having Coordinates of X = 2,668,850.00 and Y = 344,455.00; thence along the boundaries of said State Lease No. 16824 the following: North 10 degrees 19 minutes 38 seconds West 4,725.00 feet to X = 2,668,002.96 and Y = 349,103.46 and North 78 degrees 19 minutes 28 seconds West 3,219.58 feet to its Northwest corner and a point on the West line of said Block 19 having Coordinates of X = 2,664,850.00 and Y = 349,755.00; thence North along the West line of said Block 19 2,075.00 feet to its Northwest corner having Coordinates of X = 2,664,850.00 and Y = 351,830.00; thence East along the North line of said Block 19 14,750.00

feet to the point of beginning, containing approximately 1,979.47 acres, as shown outlined on a plat on file in the Office of Mineral Resources, Department of Natural Resources, as provided by the applicant. All bearings, distances and coordinates are based on Louisiana Coordinate System of 1927 (South Zone).

NOTE: The above description of the tract nominated for lease has been provided exclusively by the party nominating the tract for lease.

Maps depicting the nominated tract, containing the bearings, distances and coordinates of the nominated tract based on the Louisiana Coordinate System of 1927, North or South Zone, as applicable, are available for public inspection and review at the offices of the Louisiana State Mineral Board from 10:00 a.m. to 3:00 p.m. Monday - Friday.

Any mineral lease selected from the nominated tract and awarded by the Louisiana State Mineral Board shall be without warranty of any kind, either express, implied, or statutory, including, but not limited to, the implied warranties or merchantability and fitness for a particular purpose. Should the mineral lease awarded by the Louisiana State Mineral Board be subsequently modified, cancelled or abrogated due to the existence of conflicting leases, operating agreements, private claims or other existing of future obligations or conditions which may affect all or any portion of the leased tract, it shall not relieve the Lessee of the obligation to pay any bonus due thereon to the Louisiana State Mineral Board, nor shall the Louisiana State Mineral Board be obligated to refund any consideration paid by the Lessee prior to such modification, cancellation, or abrogation, including, but not limited to, bonuses, rents and royalties.

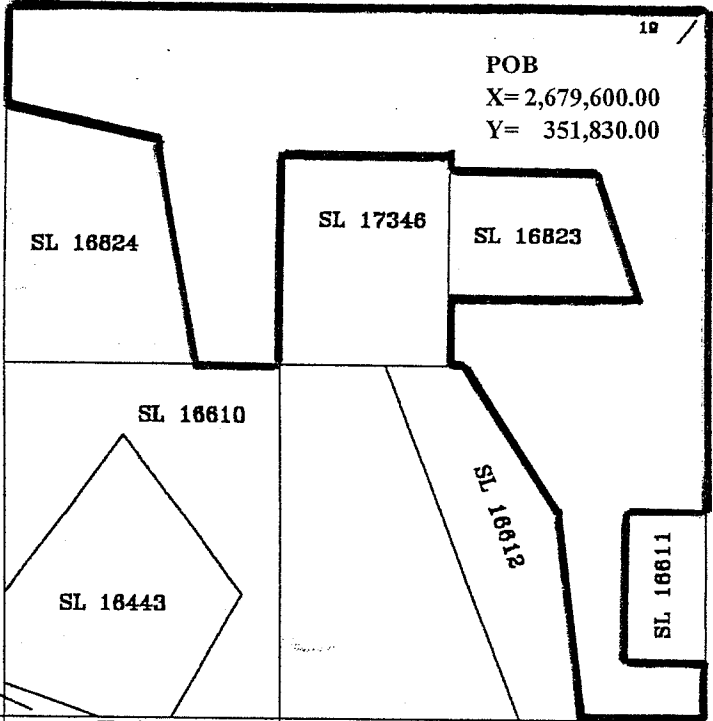
NOTE: The State of Louisiana does hereby reserve, and this lease shall be subject to, the imprescriptible right of surface use in the nature of a servitude in favor of the Department of Natural Resources, including its Offices and Commissions, for the sole purpose of implementing, constructing, servicing and maintaining approved coastal zone management and/or restoration projects. Utilization of any and all rights derived under this lease by the mineral lessee, its agents, successors or assigns, shall not interfere with nor hinder the reasonable surface use by the Department of Natural Resources, its Offices or Commissions, as hereinabove reserved.

Applicant: Andrew Barker

Bidder	Cash Payment	Price / Acre	Rental	Oil	Gas	Other

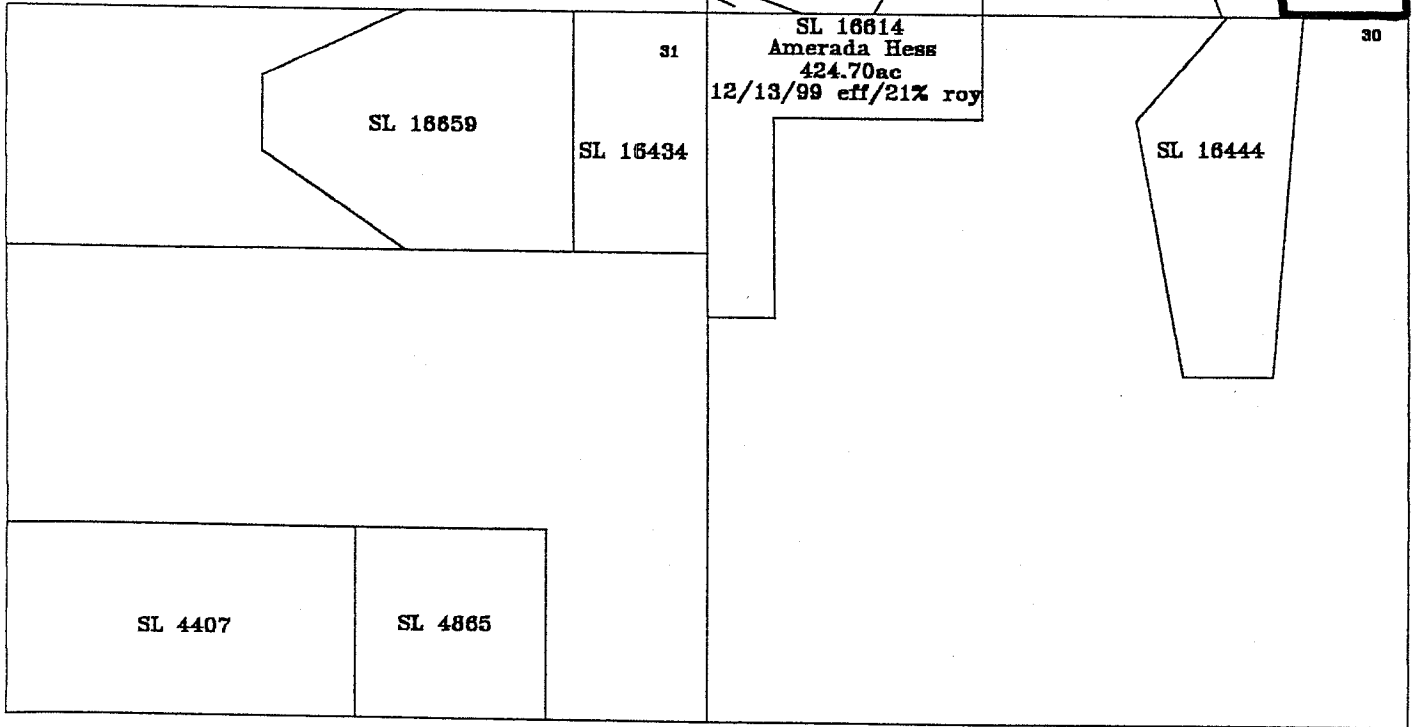
TR 34490
1,979.47 ± ACS.
JUNE, 2002

POB
X= 2,679,600.00
Y= 351,830.00



SCALE: 1" = 4,000'

BRETON SOUND AREA
PLAQUEMINES PARISH



TRACT 34491 - PORTION OF BLOCK 19, BRETON SOUND AREA, Plaquemines Parish, Louisiana

All of the lands now or formerly constituting the beds and bottoms of all water bodies of every nature and description and all islands and other lands formed by accretion or reliction, except tax lands, belonging to the State of Louisiana and not under mineral lease on June 12, 2002, situated in Plaquemines Parish, Louisiana, and more particularly described as follows: Beginning at the Southwest corner of State Lease No. 17346 having Coordinates of X = 2,670,650.00 and Y = 344,455.00; thence East along the South line of said State Lease No. 17346 2,219.00 feet to the Northwest corner of State Lease 16612 having Coordinates of X = 2,672,869.00 and Y = 344,455.00; thence South 21 degrees 00 minutes 00 seconds East 7,899.69 feet along the West line of said State Lease 16612 to its Southwest corner and a point on the South line of said Block 19 having Coordinates of X = 2,675,700.00 and Y = 337,080.00; thence West along the West line of said Block 19 5,050.00 feet to the Southeast corner of State Lease No. 16610 having Coordinates of X = 2,670,650.00 and Y = 337,080.00; thence North along the East line of said State Lease No. 16610 7,375.00 feet to its Northeast corner and the point of beginning, containing approximately **615.35 acres**, as shown outlined on a plat on file in the Office of Mineral Resources, Department of Natural Resources, as provided by the applicant. All bearings, distances and coordinates are based on Louisiana Coordinate System of 1927 (South Zone).

NOTE: The above description of the tract nominated for lease has been provided exclusively by the party nominating the tract for lease.

Maps depicting the nominated tract, containing the bearings, distances and coordinates of the nominated tract based on the Louisiana Coordinate System of 1927, North or South Zone, as applicable, are available for public inspection and review at the offices of the Louisiana State Mineral Board from 10:00 a.m. to 3:00 p.m. Monday - Friday.

Any mineral lease selected from the nominated tract and awarded by the Louisiana State Mineral Board shall be without warranty of any kind, either express, implied, or statutory, including, but not limited to, the implied warranties or merchantability and fitness for a particular purpose. Should the mineral lease awarded by the Louisiana State Mineral Board be subsequently modified, cancelled or abrogated due to the existence of conflicting leases, operating agreements, private claims or other existing or future obligations or conditions which may affect all or any portion of the leased tract, it shall not relieve the Lessee of the obligation to pay any bonus due thereon to the Louisiana State Mineral Board, nor shall the Louisiana State Mineral Board be obligated to refund any consideration paid by the Lessee prior to such modification, cancellation, or abrogation, including, but not limited to, bonuses, rents and royalties.

NOTE: It appears, according to our records, that a portion of this tract is located within the restrictive safety fairway area as set out by the Corps of Engineers, U.S. Army.

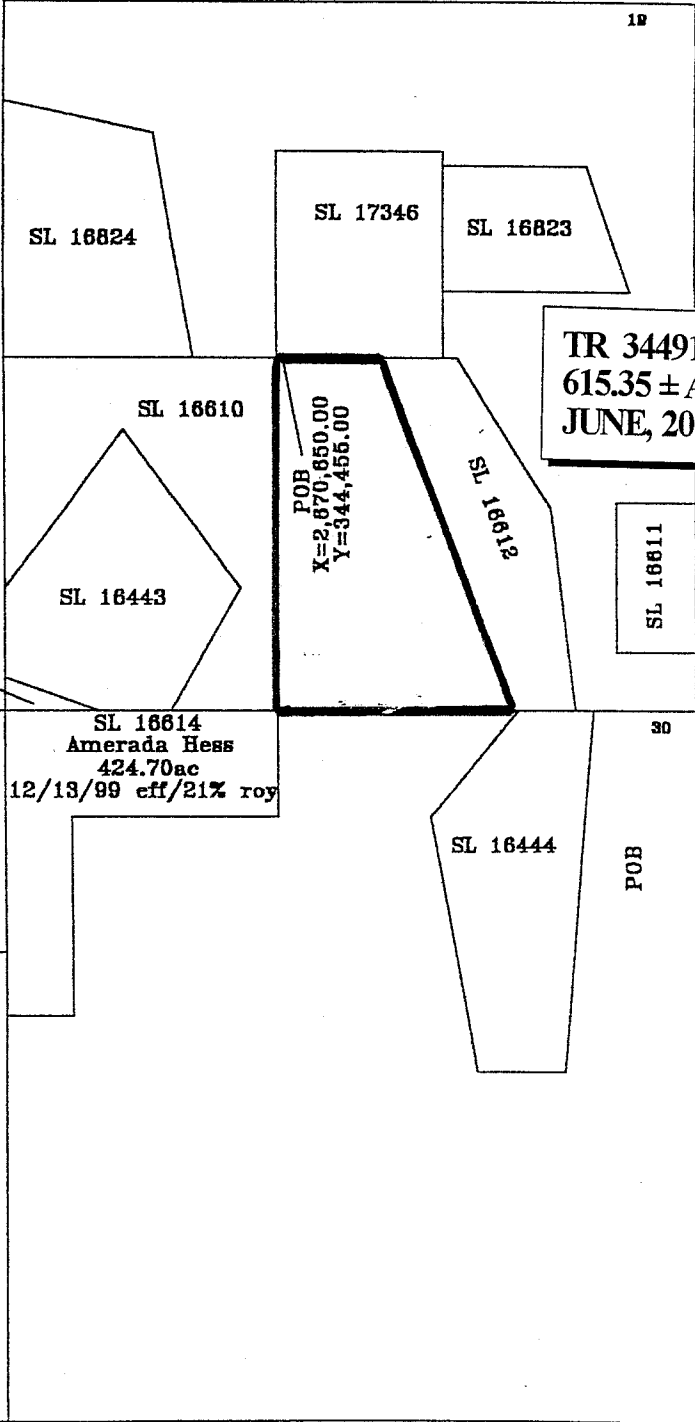
NOTE: The State of Louisiana does hereby reserve, and this lease shall be subject to, the imprescriptible right of surface use in the nature of a servitude in favor of the Department of Natural Resources, including its Offices and Commissions, for the sole purpose of implementing, constructing, servicing and maintaining approved coastal zone management and/or restoration projects. Utilization of any and all rights derived under this lease by the mineral lessee, its agents, successors or assigns, shall not interfere with nor hinder the reasonable surface use by the Department of Natural Resources, its Offices or Commissions, as hereinabove reserved.

Applicant: Andrew Barker

Bidder	Cash Payment	Price / Acre	Rental	Oil	Gas	Other

SCALE: 1" = 4,000'

BRETON SOUND AREA
PLAQUEMINES PARISH



TR 34491
615.35 ± ACS.
JUNE, 2002

POB
X=2,670,650.00
Y=344,456.00

SL 16614
Amerada Hess
424.70ac
12/13/99 eff/21% roy

SL 16611

SL 16613

31

30

SL 16659

SL 16454

SL 16444

POB

SL 4407

SL 4865

TRACT 34492 - PORTION OF BLOCK 20, BRETON SOUND AREA, Plaquemiens Parish, Louisiana

All of the lands now or formerly constituting the beds and bottoms of all water bodies of every nature and description and all islands and other lands formed by accretion or reliction, except tax lands, belonging to the State of Louisiana and not under mineral lease on June 12, 2002, situated in Plaquemines Parish, Louisiana, and more particularly described as follows: Beginning at the Northwest corner of said Block 20 having Coordinates of X = 2,679,600.00 and Y = 351,830.00; thence East along the north line of said Block 20 7,350.00 feet to point having Coordinates of X = 2,686,950.00 and Y = 351,830.00; thence South 11,062.50 feet to the Northwest corner of State Lease No. 1997, as amended having Coordinates of X = 2,686,950.00 and Y = 340,767.50; thence continue South along the West line of said State Lease No. 1997 3,687.50 feet to its Southwest corner and a point on the South line of said Block 20 having Coordinates of X = 2,686,950.00 and Y = 337,080.00; thence West along the South line of said Block 20 7,350.00 feet to its Southwest corner having Coordinates of X = 2,679,600.00 and Y = 337,080.00; thence North along the West line of said Block 20 1,240.00 feet to the Southwest corner of State Lease No. 16615 having Coordinates of X = 2,679,600.00 and Y = 338,320.00; thence along the boundaries of said State Lease No. 16615 the following: East 500.00 feet to X = 2,680,100.00 and Y = 338,320.00, North 3,150.00 feet to X = 2,680,100.00 and Y = 341,470.00 and West 500.00 feet to its Northwest corner and a point on the West line of said Block 20 having Coordinates of X = 2,679,600.00 and Y = 341,470.00; thence North along the West line of said Block 20 10,360.00 feet to the point of beginning, containing approximately **2,452.65 acres**, as shown outlined on a plat on file in the Office of Mineral Resources, Department of Natural Resources, as provided by the applicant. All bearings, distances and coordinates are based on Louisiana Coordinate System of 1927 (South Zone).

NOTE: The above description of the tract nominated for lease has been provided exclusively by the party nominating the tract for lease.

Maps depicting the nominated tract, containing the bearings, distances and coordinates of the nominated tract based on the Louisiana Coordinate System of 1927, North or South Zone, as applicable, are available for public inspection and review at the offices of the Louisiana State Mineral Board from 10:00 a.m. to 3:00 p.m. Monday - Friday.

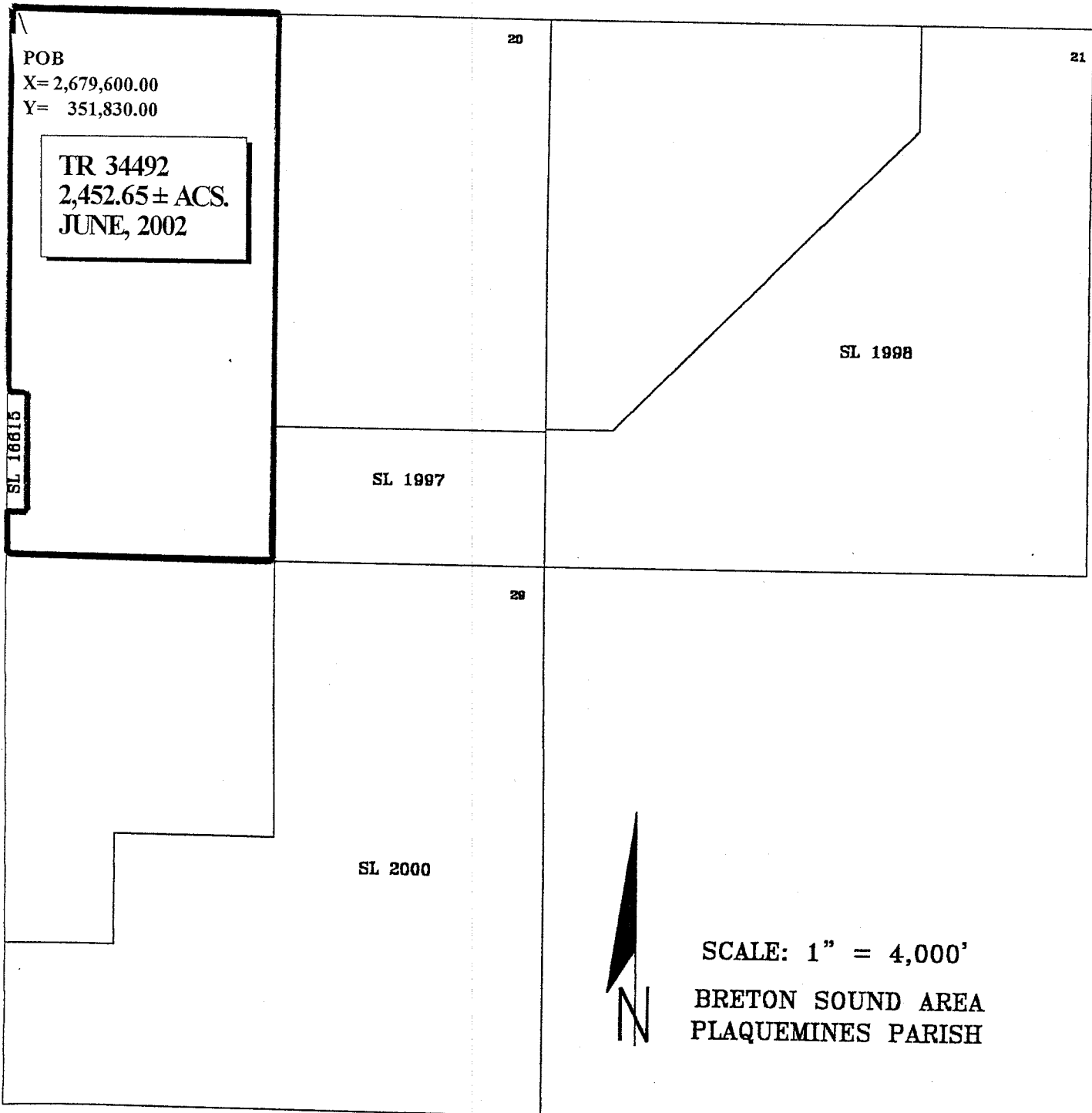
Any mineral lease selected from the nominated tract and awarded by the Louisiana State Mineral Board shall be without warranty of any kind, either express, implied, or statutory, including, but not limited to, the implied warranties or merchantability and fitness for a particular purpose. Should the mineral lease awarded by the Louisiana State Mineral Board be subsequently modified, cancelled or abrogated due to the existence of conflicting leases, operating agreements, private claims or other existing or future obligations or conditions which may affect all or any portion of the leased tract, it shall not relieve the Lessee of the obligation to pay any bonus due thereon to the Louisiana State Mineral Board, nor shall the Louisiana State Mineral Board be obligated to refund any consideration paid by the Lessee prior to such modification,

cancellation, or abrogation, including, but not limited to, bonuses, rents and royalties.

NOTE: The State of Louisiana does hereby reserve, and this lease shall be subject to, the imprescriptible right of surface use in the nature of a servitude in favor of the Department of Natural Resources, including its Offices and Commissions, for the sole purpose of implementing, constructing, servicing and maintaining approved coastal zone management and/or restoration projects. Utilization of any and all rights derived under this lease by the mineral lessee, its agents, successors or assigns, shall not interfere with nor hinder the reasonable surface use by the Department of Natural Resources, its Offices or Commissions, as hereinabove reserved.

Applicant: Andrew Barker

Bidder	Cash Payment	Price / Acre	Rental	Oil	Gas	Other



TRACT 34493 - PORTION OF BLOCK 20, BRETON SOUND AREA, Plaquemines Parish, Louisiana

All of the lands now or formerly constituting the beds and bottoms of all water bodies of every nature and description and all islands and other lands formed by accretion or reliction, except tax lands, belonging to the State of Louisiana and not under mineral lease on June 12, 2002, situated in Plaquemines Parish, Louisiana, and more particularly described as follows: Beginning at the Northeast corner of said Block 20 having Coordinates of X = 2,694,350.00 and Y = 351,830.00; thence South along the East line of said Block 20 11,062.50 feet to the Northeast corner of State Lease No. 1997, as amended, having Coordinates of X = 2,694,350.00 and Y = 340,767.50; thence West along the North line of said State Lease No. 1997 7,400.00 feet its Northwest corner having Coordinates of X = 2,686,950.00 and Y = 340,767.50; thence North 11,062.50 feet to a point on the North line of said Block 20 having Coordinates of X = 2,686,950.00 and Y = 351,830.00; thence East along the North line of said Block 20 7,400.00 feet to the point of beginning, containing approximately 1,879.30 acres, as shown outlined on a plat on file in the Office of Mineral Resources, Department of Natural Resources, as provided by the applicant. All bearings, distances and coordinates are based on Louisiana Coordinate System of 1927 (South Zone).

NOTE: The above description of the tract nominated for lease has been provided exclusively by the party nominating the tract for lease.

Maps depicting the nominated tract, containing the bearings, distances and coordinates of the nominated tract based on the Louisiana Coordinate System of 1927, North or South Zone, as applicable, are available for public inspection and review at the offices of the Louisiana State Mineral Board from 10:00 a.m. to 3:00 p.m. Monday - Friday.

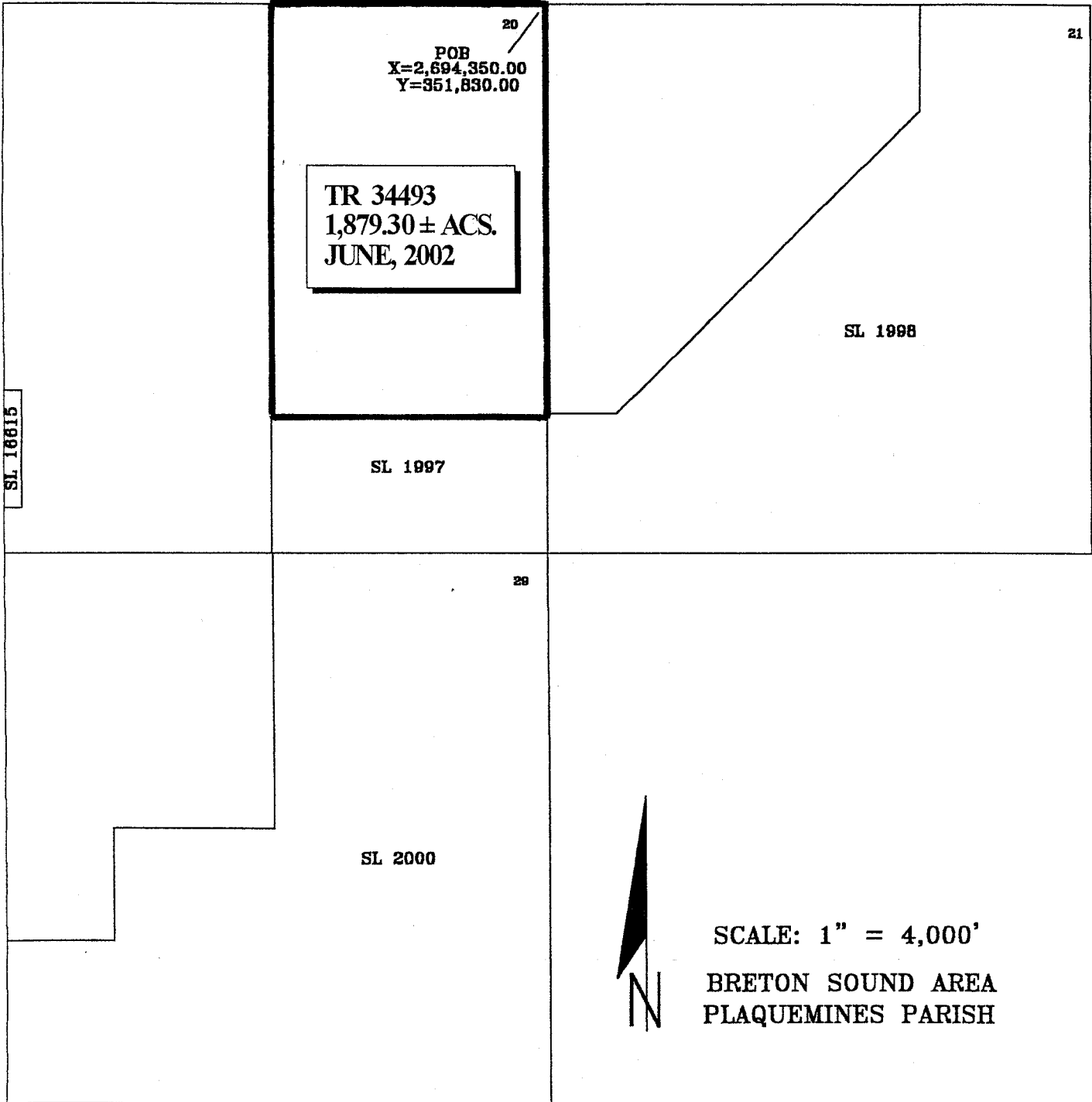
Any mineral lease selected from the nominated tract and awarded by the Louisiana State Mineral Board shall be without warranty of any kind, either express, implied, or statutory, including, but not limited to, the implied warranties or merchantability and fitness for a particular purpose. Should the mineral lease awarded by the Louisiana State Mineral Board be subsequently modified, cancelled or abrogated due to the existence of conflicting leases, operating agreements, private claims or other existing or future obligations or conditions which may affect all or any portion of the leased tract, it shall not relieve the Lessee of the obligation to pay any bonus due thereon to the Louisiana State Mineral Board, nor shall the Louisiana State Mineral Board be obligated to refund any consideration paid by the Lessee prior to such modification, cancellation, or abrogation, including, but not limited to, bonuses, rents and royalties.

NOTE: The State of Louisiana does hereby reserve, and this lease shall be subject to, the imprescriptible right of surface use in the nature of a servitude in favor of the Department of Natural Resources, including its Offices and Commissions, for the sole purpose of implementing, constructing, servicing and maintaining approved coastal zone management and/or restoration projects. Utilization of any and all rights derived

under this lease by the mineral lessee, its agents, successors or assigns, shall not interfere with nor hinder the reasonable surface use by the Department of Natural Resources, its Offices or Commissions, as hereinabove reserved.

Applicant: Andrew Barker

Bidder	Cash Payment	Price / Acre	Rental	Oil	Gas	Other



20
POB
X=2,694,350.00
Y=351,830.00

TR 34493
1,879.30 ± ACS.
JUNE, 2002

21
SL 1998

SL 1997

29
SL 2000



SCALE: 1" = 4,000'
BRETON SOUND AREA
PLAQUEMINES PARISH

SL 1991

TRACT 34494 - PORTION OF BLOCK 21, BRETON SOUND AREA, Plaquemines Parish, Louisiana

All of the lands now or formerly constituting the beds and bottoms of all water bodies of every nature and description and all islands and other lands formed by accretion or reliction, except tax lands, belonging to the State of Louisiana and not under mineral lease on June 12, 2002, situated in Plaquemines Parish, Louisiana, and more particularly described as follows: Beginning at the Northwest corner of said Block 21 having Coordinates of X = 2,694,350.00 and Y = 351,830.00; thence East along the North line of said Block 21 10,100.00 feet to the most North Northwest corner of State Lease No. 1998, as amended, having Coordinates of X = 2,704,450.00 and Y = 351,830.00; thence along the boundaries of said State Lease No. 1998 the following: South 2,850.00 feet to X = 2,704,450.00 and Y = 348,980.00, South 45 degrees 15 minutes 59 seconds West 7,601.48 feet to X = 2,699,050.00 and Y = 343,630.00, South 45 degrees 30 minutes 25 seconds West 3,995.31 feet to X = 2,696,200.00 and Y = 340,830.00 and West 1,850.00 feet the most South Northwest corner of said State Lease No. 1998 having Coordinates of X = 2,694,350.00 and Y = 340,830.00; thence North 11,000.00 feet to the point of beginning, containing approximately **1,780.19 acres**, as shown outlined on a plat on file in the Office of Mineral Resources, Department of Natural Resources, as provided by the applicant. All bearings, distances and coordinates are based on Louisiana Coordinate System of 1927 (South Zone).

NOTE: The above description of the tract nominated for lease has been provided exclusively by the party nominating the tract for lease.

Maps depicting the nominated tract, containing the bearings, distances and coordinates of the nominated tract based on the Louisiana Coordinate System of 1927, North or South Zone, as applicable, are available for public inspection and review at the offices of the Louisiana State Mineral Board from 10:00 a.m. to 3:00 p.m. Monday - Friday.

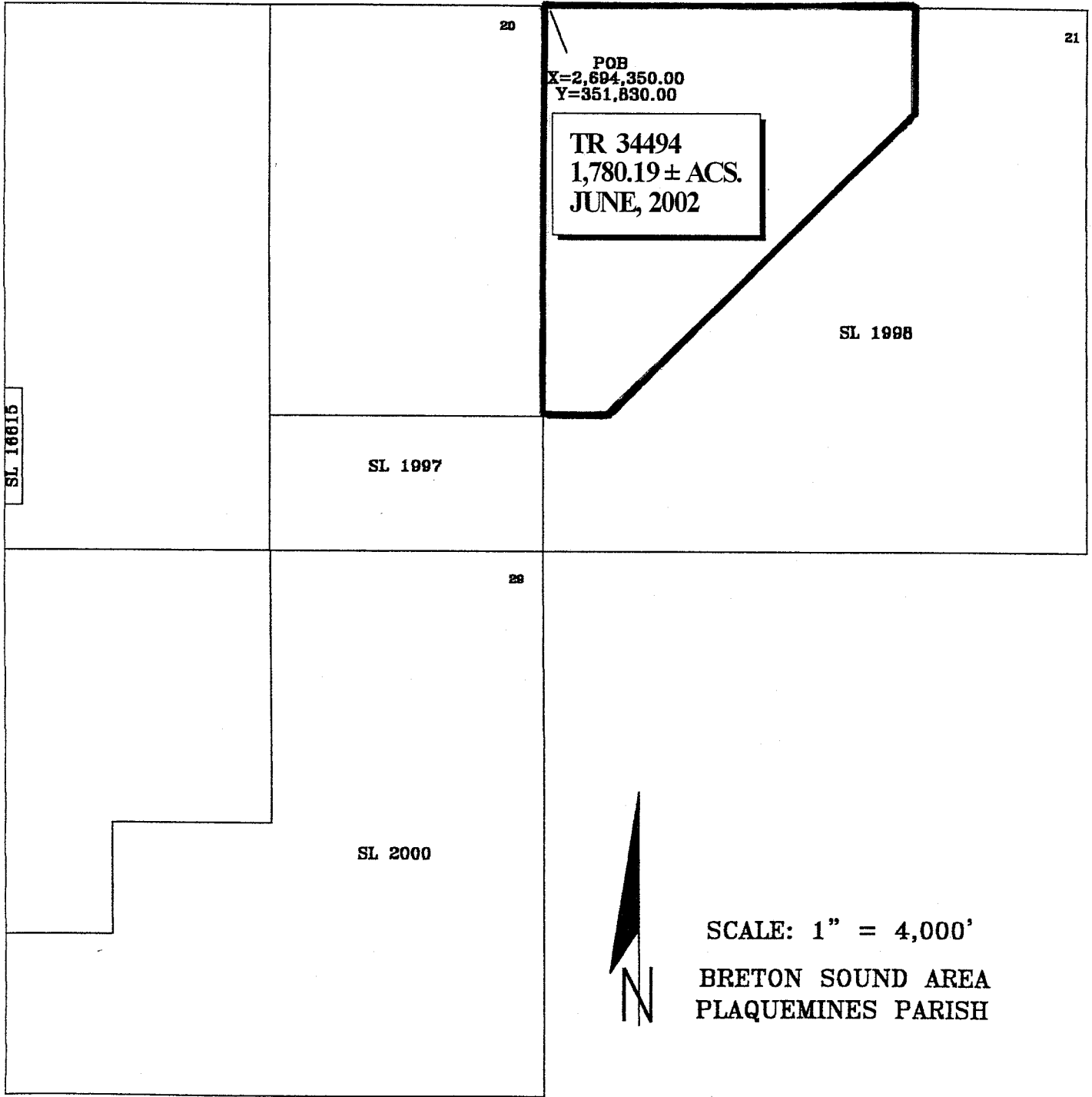
Any mineral lease selected from the nominated tract and awarded by the Louisiana State Mineral Board shall be without warranty of any kind, either express, implied, or statutory, including, but not limited to, the implied warranties or merchantability and fitness for a particular purpose. Should the mineral lease awarded by the Louisiana State Mineral Board be subsequently modified, cancelled or abrogated due to the existence of conflicting leases, operating agreements, private claims or other existing or future obligations or conditions which may affect all or any portion of the leased tract, it shall not relieve the Lessee of the obligation to pay any bonus due thereon to the Louisiana State Mineral Board, nor shall the Louisiana State Mineral Board be obligated to refund any consideration paid by the Lessee prior to such modification, cancellation, or abrogation, including, but not limited to, bonuses, rents and royalties.

NOTE: The State of Louisiana does hereby reserve, and this lease shall be subject to, the imprescriptible right of surface use in the nature of a servitude in favor of the Department of Natural Resources, including its Offices and Commissions, for the sole purpose of implementing,

constructing, servicing and maintaining approved coastal zone management and/or restoration projects. Utilization of any and all rights derived under this lease by the mineral lessee, its agents, successors or assigns, shall not interfere with nor hinder the reasonable surface use by the Department of Natural Resources, its Offices or Commissions, as hereinabove reserved.

Applicant: Andrew Barker

Bidder	Cash Payment	Price / Acre	Rental	Oil	Gas	Other



TRACT 34495 - PORTION OF BLOCK 29, BRETON SOUND AREA, Plaquemines Parish, Louisiana

All of the lands now or formerly constituting the beds and bottoms of all water bodies of every nature and description and all islands and other lands formed by accretion or reliction, except tax lands, belonging to the State of Louisiana and not under mineral lease on June 12, 2002, situated in Plaquemines Parish, Louisiana, and more particularly described as follows: Beginning at the Northwest corner of said Block 29 having Coordinates of X = 2,679,600.00 and Y = 337,080.00; thence East along the North line of said Block 29 7,375.00 feet to the most North Northwest corner of State Lease 2000, as amended, having Coordinates of X = 2,686,975.00 and Y = 337,080.00; thence along the boundaries of said State Lease No. 2000 the following: South 7,375.00 feet to X = 2,686,975.00 and Y = 329,705.00, West 4,375.00 feet to X = 2,682,600.00 and Y = 329,705.00, South 3,000.00 feet to X = 2,682,600.00 and Y = 326,705.00 and West 3,000.00 feet to the most South Northwest corner of said State Lease 2000 and a point on the West line of said Block 29 having Coordinates of X = 2,679,600.00 and Y = 326,705.00; thence North along the West line of said Block 29 10,375.00 feet to the point of beginning, containing approximately **1,455.25 acres**, as shown outlined on a plat on file in the Office of Mineral Resources, Department of Natural Resources, as provided by the applicant. All bearings, distances and coordinates are based on Louisiana Coordinate System of 1927 (South Zone).

NOTE: The above description of the tract nominated for lease has been provided exclusively by the party nominating the tract for lease.

Maps depicting the nominated tract, containing the bearings, distances and coordinates of the nominated tract based on the Louisiana Coordinate System of 1927, North or South Zone, as applicable, are available for public inspection and review at the offices of the Louisiana State Mineral Board from 10:00 a.m. to 3:00 p.m. Monday - Friday.

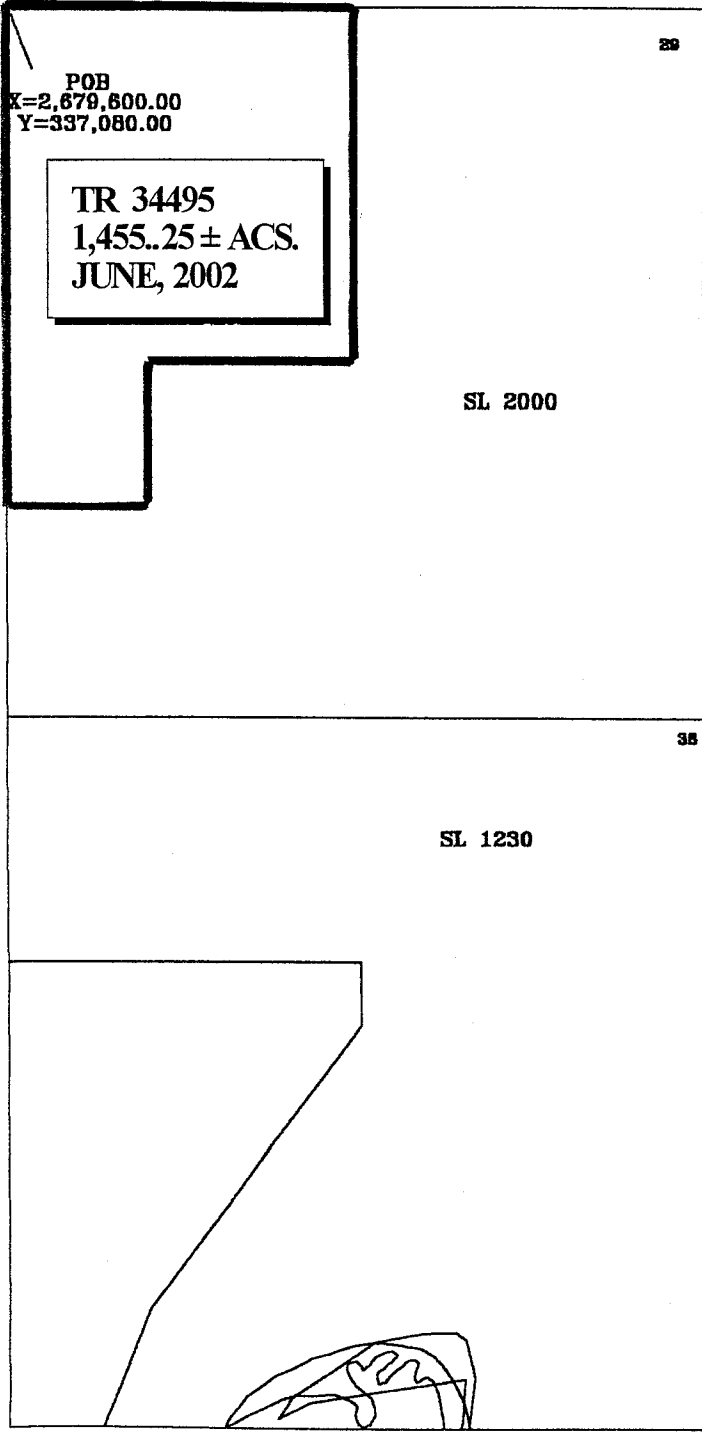
Any mineral lease selected from the nominated tract and awarded by the Louisiana State Mineral Board shall be without warranty of any kind, either express, implied, or statutory, including, but not limited to, the implied warranties or merchantability and fitness for a particular purpose. Should the mineral lease awarded by the Louisiana State Mineral Board be subsequently modified, cancelled or abrogated due to the existence of conflicting leases, operating agreements, private claims or other existing or future obligations or conditions which may affect all or any portion of the leased tract, it shall not relieve the Lessee of the obligation to pay any bonus due thereon to the Louisiana State Mineral Board, nor shall the Louisiana State Mineral Board be obligated to refund any consideration paid by the Lessee prior to such modification, cancellation, or abrogation, including, but not limited to, bonuses, rents and royalties.

NOTE: It appears, according to our records, that a portion of this tract is located within the restrictive safety fairway area as set out by the Corps of Engineers, U.S. Army.

NOTE: The State of Louisiana does hereby reserve, and this lease shall be subject to, the imprescriptible right of surface use in the nature of a servitude in favor of the Department of Natural Resources, including its Offices and Commissions, for the sole purpose of implementing, constructing, servicing and maintaining approved coastal zone management and/or restoration projects. Utilization of any and all rights derived under this lease by the mineral lessee, its agents, successors or assigns, shall not interfere with nor hinder the reasonable surface use by the Department of Natural Resources, its Offices or Commissions, as hereinabove reserved.

Applicant: Andrew Barker

Bidder	Cash Payment	Price / Acre	Rental	Oil	Gas	Other



20

POB
X=2,679,600.00
Y=337,080.00

TR 34495
1,455.25 ± ACS.
JUNE, 2002

SL 2000

35

SL 1230



SCALE: 1" = 4,000'
BRETON SOUND AREA
PLAQUEMINES PARISH

TRACT 34496 - PORTION OF BLOCK 34, BRETON SOUND AREA, Plaquemines Parish, Louisiana

All of the lands now or formerly constituting the beds and bottoms of all water bodies of every nature and description and all islands and other lands formed by accretion or reliction, except tax lands, belonging to the State of Louisiana and not under mineral lease on June 12, 2002, situated in Plaquemines Parish, Louisiana, and more particularly described as follows: Beginning at the Southeast corner of said Block 34 having Coordinates of X = 2,664,850.00 and Y = 307,580.00; thence West along the South line of said Block 34 14,750.00 feet to its Southwest corner having Coordinates of X = 2,650,100.00 and Y = 307,580.00; thence North along the West line of said Block 34 995.79 feet to the Southwest corner of State Lease No. 15460, as amended having Coordinates of X = 2,650,100.00 and Y = 308,575.79; thence along the boundaries of said State Lease No. 14560 the following: East 4,590.00 feet to X = 2,654,690.00 and Y = 308,575.79, North 948.36 feet to X = 2,654,690.00 and Y = 309,524.15, East 5,543.55 feet to X = 2,660,233.55 and Y = 309,524.15 and North 1,743.35 feet to its Northeast corner and a point on the South line of State Lease No. 14216 having Coordinates of X = 2,660,233.55 and Y = 311,267.50; thence East along the South line of said State Lease No. 14216 4,616.45 feet to its Southeast corner and a point on the East line of said Block 34 having Coordinates of X = 2,664,850.00 and Y = 311,267.50; thence South along the East line of said Block 34 3,687.50 to the point of beginning, containing approximately **743.65 acres**, as shown outlined on a plat on file in the Office of Mineral Resources, Department of Natural Resources, as provided by the applicant. All bearings, distances and coordinates are based on Louisiana Coordinate System of 1927 (South Zone).

NOTE: The above description of the tract nominated for lease has been provided exclusively by the party nominating the tract for lease.

Maps depicting the nominated tract, containing the bearings, distances and coordinates of the nominated tract based on the Louisiana Coordinate System of 1927, North or South Zone, as applicable, are available for public inspection and review at the offices of the Louisiana State Mineral Board from 10:00 a.m. to 3:00 p.m. Monday - Friday.

Any mineral lease selected from the nominated tract and awarded by the Louisiana State Mineral Board shall be without warranty of any kind, either express, implied, or statutory, including, but not limited to, the implied warranties of merchantability and fitness for a particular purpose. Should the mineral lease awarded by the Louisiana State Mineral Board be subsequently modified, cancelled or abrogated due to the existence of conflicting leases, operating agreements, private claims or other existing or future obligations or conditions which may affect all or any portion of the leased tract, it shall not relieve the Lessee of the obligation to pay any bonus due thereon to the Louisiana State Mineral Board, nor shall the Louisiana State Mineral Board be obligated to refund any consideration paid by the Lessee prior to such modification, cancellation, or abrogation, including, but not limited to, bonuses, rents and royalties.

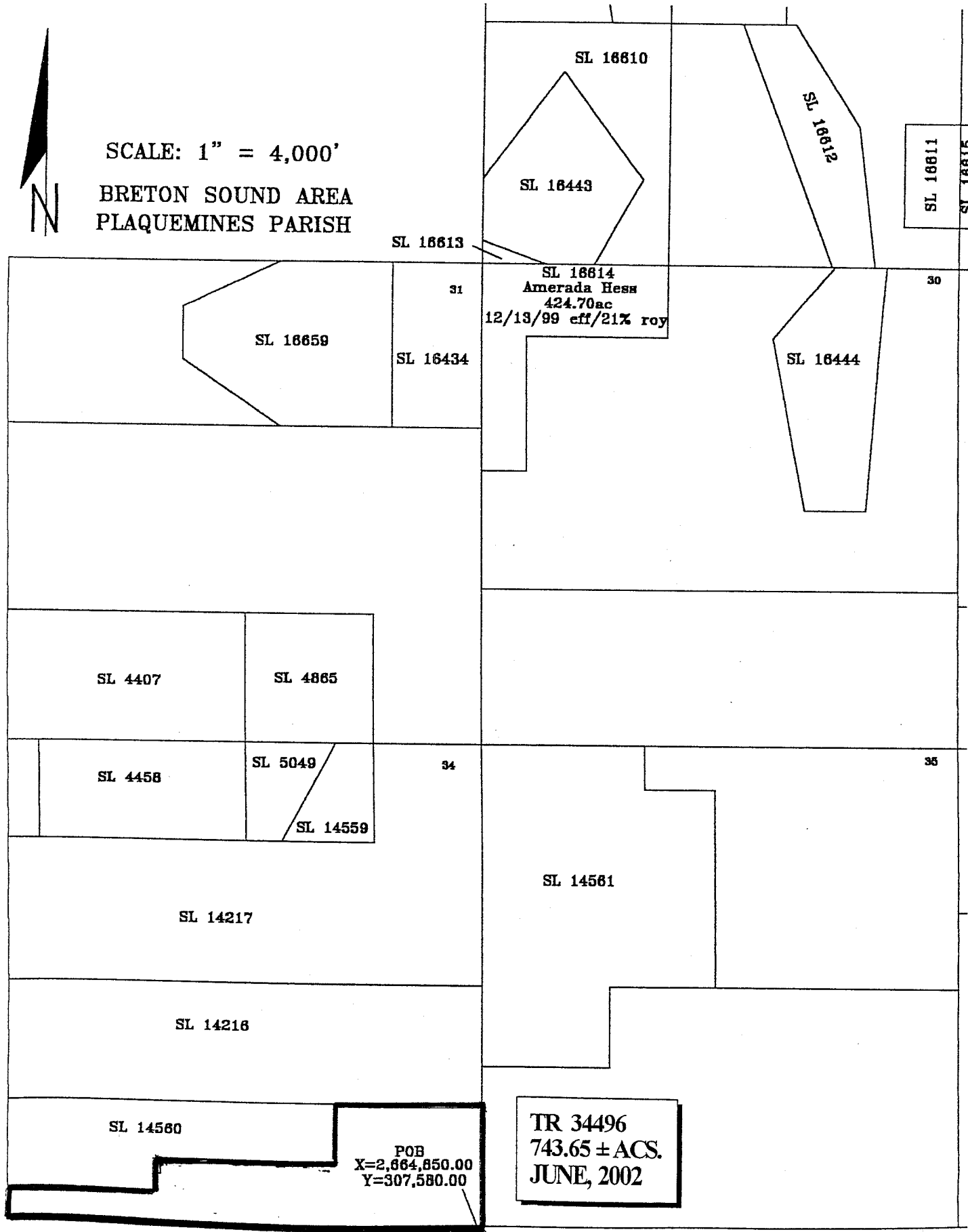
NOTE: The State of Louisiana does hereby reserve, and this lease shall be subject to, the imprescriptible right of surface use in the nature of a servitude in favor of the Department of Natural Resources, including its Offices and Commissions, for the sole purpose of implementing, constructing, servicing and maintaining approved coastal zone management and/or restoration projects. Utilization of any and all rights derived under this lease by the mineral lessee, its agents, successors or assigns, shall not interfere with nor hinder the reasonable surface use by the Department of Natural Resources, its Offices or Commissions, as hereinabove reserved.

Applicant: Andrew Barker

Bidder	Cash Payment	Price / Acre	Rental	Oil	Gas	Other



SCALE: 1" = 4,000'
BRETON SOUND AREA
PLAQUEMINES PARISH



SL 18610

SL 18443

SL 18612

SL 18611

ST TRACT

SL 18613

31

SL 18614
Amerada Hess
424.70ac
12/13/99 eff/21% roy

30

SL 18659

SL 18434

SL 18444

SL 4407

SL 4865

SL 4458

SL 5049

34

SL 14559

35

SL 14217

SL 14561

SL 14216

SL 14580

POB
X=2,664,850.00
Y=307,580.00

TR 34496
743.65 ± ACS.
JUNE, 2002

TRACT 34497 - PORTION OF BLOCK 35, BRETON SOUND AREA, Plaquemines Parish, Louisiana

All of the lands now or formerly constituting the beds and bottoms of all water bodies of every nature and description and all islands and other lands formed by accretion or reliction, except tax lands, belonging to the State of Louisiana and not under mineral lease on June 12, 2002, situated in Plaquemines Parish, Louisiana, and more particularly described as follows: Beginning at the Northeast corner of said Block 35 having Coordinates of X = 2,679,600.00 and Y = 322,330.00; thence South along the East line of said Block 35 7,375.00 feet to a point having Coordinates of X = 2,679,600.00 and Y = 314,955.00; thence West 7,500.00 feet to the most Eastern Southeast corner of State Lease No. 14561, as amended, having Coordinates of X = 2,672,100.00 and Y = 314,955.00; thence along the boundaries of said State Lease No. 14561 the following: North 6,055.00 feet to X = 2,672,100.00 and Y = 321,010.00, West 2,160.00 feet to X = 2,669,940.00 and Y = 321,010.00 and North 1,320.00 feet to the most North Northeast corner of said State Lease No. 14561 and a point on the North line of said Block 35 having Coordinates of X = 2,669,940.00 and Y = 322,330.00; thence East along the North line of said Block 35 9,660.00 feet to the point of beginning, containing approximately 1,335.25 acres, as shown outlined on a plat on file in the Office of Mineral Resources, Department of Natural Resources, as provided by the applicant. All bearings, distances and coordinates are based on Louisiana Coordinate System of 1927 (South Zone).

NOTE: The above description of the tract nominated for lease has been provided exclusively by the party nominating the tract for lease.

Maps depicting the nominated tract, containing the bearings, distances and coordinates of the nominated tract based on the Louisiana Coordinate System of 1927, North or South Zone, as applicable, are available for public inspection and review at the offices of the Louisiana State Mineral Board from 10:00 a.m. to 3:00 p.m. Monday - Friday.

Any mineral lease selected from the nominated tract and awarded by the Louisiana State Mineral Board shall be without warranty of any kind, either express, implied, or statutory, including, but not limited to, the implied warranties or merchantability and fitness for a particular purpose. Should the mineral lease awarded by the Louisiana State Mineral Board be subsequently modified, cancelled or abrogated due to the existence of conflicting leases, operating agreements, private claims or other existing or future obligations or conditions which may affect all or any portion of the leased tract, it shall not relieve the Lessee of the obligation to pay any bonus due thereon to the Louisiana State Mineral Board, nor shall the Louisiana State Mineral Board be obligated to refund any consideration paid by the Lessee prior to such modification, cancellation, or abrogation, including, but not limited to, bonuses, rents and royalties.

NOTE: It appears, according to our records, that a portion of this tract is located within the restrictive safety fairway area as set out by the Corps of Engineers, U.S. Army.

NOTE: The State of Louisiana does hereby reserve, and this lease shall be subject to, the imprescriptible right of surface use in the nature of a servitude in favor of the Department of Natural Resources, including its Offices and Commissions, for the sole purpose of implementing, constructing, servicing and maintaining approved coastal zone management and/or restoration projects. Utilization of any and all rights derived under this lease by the mineral lessee, its agents, successors or assigns, shall not interfere with nor hinder the reasonable surface use by the Department of Natural Resources, its Offices or Commissions, as hereinabove reserved.

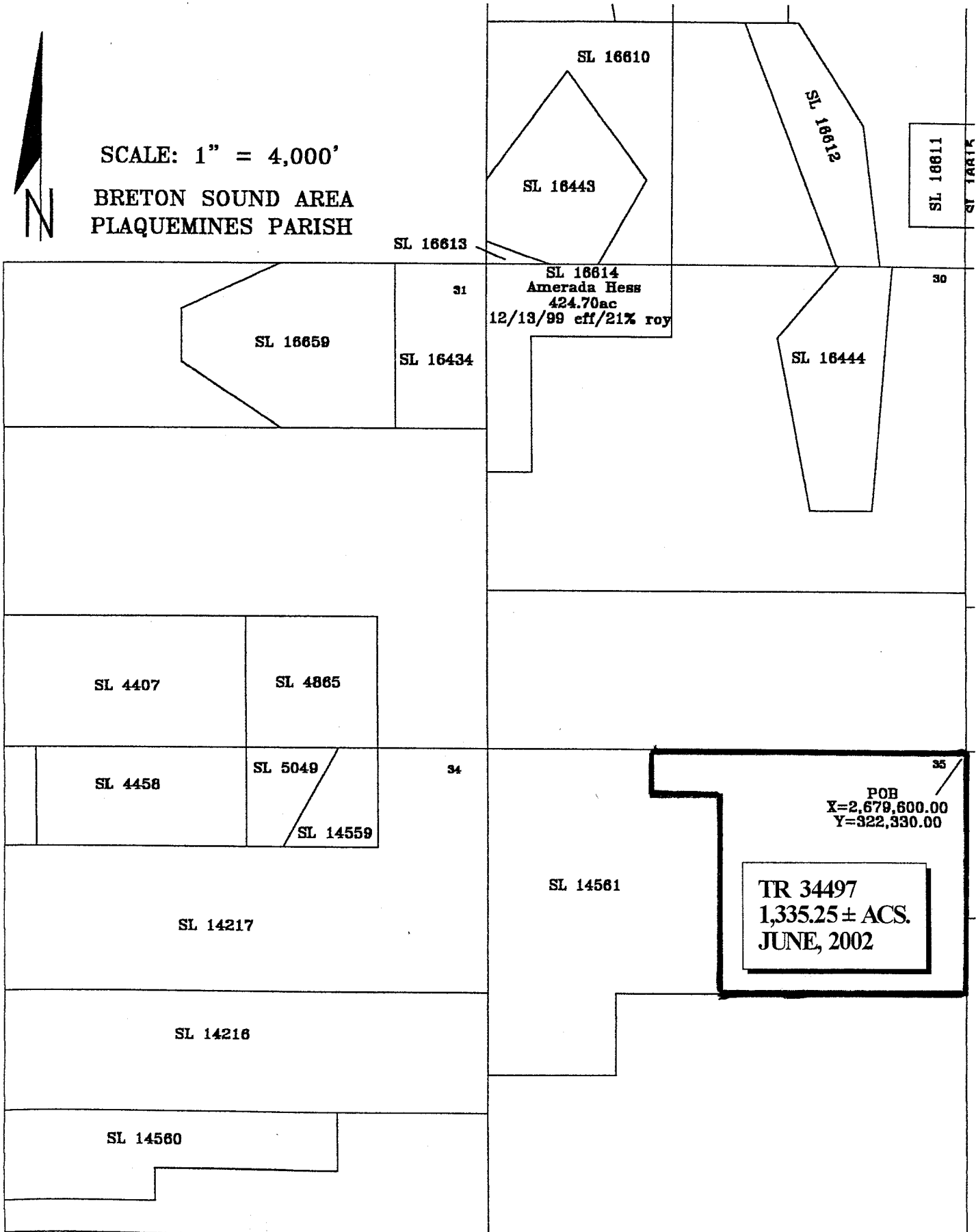
Applicant: Andrew Barker

Bidder	Cash Payment	Price / Acre	Rental	Oil	Gas	Other



SCALE: 1" = 4,000'

BRETON SOUND AREA
PLAQUEMINES PARISH



31

SL 16614
Amerada Hess
424.70ac
12/13/99 eff/21% roy

30

SL 16659

SL 16434

SL 16444

SL 4407

SL 4865

SL 4458

SL 5049

SL 14559

34

SL 14217

SL 14216

SL 14560

SL 14561

POB
X=2,679,600.00
Y=322,330.00

35

TR 34497
1,335.25 ± ACS.
JUNE, 2002

SL 16611

ST TART