

**TRACT 34483 - Jefferson and St. Charles Parishes, Louisiana**

All of the lands now or formerly constituting the beds and bottoms of all water bodies of every nature and description and all islands and other lands formed by accretion or reliction, except tax lands, owned by and not under mineral lease from the State of Louisiana on June 12, 2002, situated in Jefferson and St. Charles Parishes, Louisiana, within the following described boundaries: Beginning at a point having Coordinates of X = 2,336,022.90 and Y = 452,500.54; thence East 17,567.90 feet to a point having Coordinates of X = 2,353,590.80 and Y = 452,500.54; thence South 12,052.67 feet to a point having Coordinates of X = 2,353,590.80 and Y = 440,447.87; thence South 64 degrees 21 minutes 58.3 seconds West 14,635.54 feet to a point having Coordinates of X = 2,340,395.73 and Y = 434,116.28; thence West 4,372.83 feet to a point having Coordinates of X = 2,336,022.90 and Y = 434,116.28; thence North 18,384.26 to the point of beginning, **LESS AND EXCEPT** all that portion of the Salvador Wildlife Management Area that lies within the above described tract, containing approximately **475 acres**, as shown outlined on a plat on file in the Office of Mineral Resources, Department of Natural Resources, as provided by the applicant. All bearings, distances and coordinates are based on Louisiana Coordinate System of 1927 (South Zone).

NOTE: The above description of the tract nominated for lease has been provided exclusively by the party nominating the tract for lease.

Maps depicting the nominated tract, containing the bearings, distances and coordinates of the nominated tract based on the Louisiana Coordinate System of 1927, North or South Zone, as applicable, are available for public inspection and review at the offices of the Louisiana State Mineral Board from 10:00 a.m. to 3:00 p.m. Monday - Friday.

Any mineral lease selected from the nominated tract and awarded by the Louisiana State Mineral Board shall be without warranty of any kind, either express, implied, or statutory, including, but not limited to, the implied warranties or merchantability and fitness for a particular purpose. Should the mineral lease awarded by the Louisiana State Mineral Board be subsequently modified, cancelled or abrogated due to the existence of conflicting leases, operating agreements, private claims or other existing of future obligations or conditions which may affect all or any portion of the leased tract, it shall not relieve the Lessee of the obligation to pay any bonus due thereon to the Louisiana State Mineral Board, nor shall the Louisiana State Mineral Board be obligated to refund any consideration paid by the Lessee prior to such modification, cancellation, or abrogation, including, but not limited to, bonuses, rents and royalties.

NOTE: The State of Louisiana does hereby reserve, and this lease shall be subject to, the imprescriptible right of surface use in the nature of a servitude in favor of the Department of Natural Resources, including its Offices and Commissions, for the sole purpose of implementing, constructing, servicing and maintaining approved coastal zone management and/or restoration projects. Utilization of any and all rights derived under this lease by the mineral lessee, its agents, successors or assigns,

shall not interfere with nor hinder the reasonable surface use by the Department of Natural Resources, its Offices or Commissions, as hereinabove reserved.

Applicant: Jesse B. Newton, III

Bidder	Cash Payment	Price / Acre	Rental	Oil	Gas	Other



**TRACT 34484 - Jefferson Parish, Louisiana**

All of the lands now or formerly constituting the beds and bottoms of all water bodies of every nature and description and all islands and other lands formed by accretion or reliction, except tax lands, owned by and not under mineral lease from the State of Louisiana on June 12, 2002, situated in Jefferson Parish, Louisiana, within the following described boundaries: Beginning at a point having Coordinates of X = 2,382,227.51 and Y = 431,934.53; thence East 11,591.79 feet to a point having Coordinates of X = 2,393,819.30 and Y = 431,934.53; thence South 13,263.06 feet to a point having Coordinates of X = 2,393,819.30 and Y = 418,671.47; thence West 11,591.79 feet to a point having Coordinates of X = 2,382,227.51 and Y = 418,671.47; thence North 13,263.06 feet to the point of beginning, containing approximately **8 acres**, as shown outlined on a plat on file in the Office of Mineral Resources, Department of Natural Resources, as provided by the applicant. All bearings, distances and coordinates are based on Louisiana Coordinate System of 1927 (South Zone).

NOTE: The above description of the tract nominated for lease has been provided exclusively by the party nominating the tract for lease.

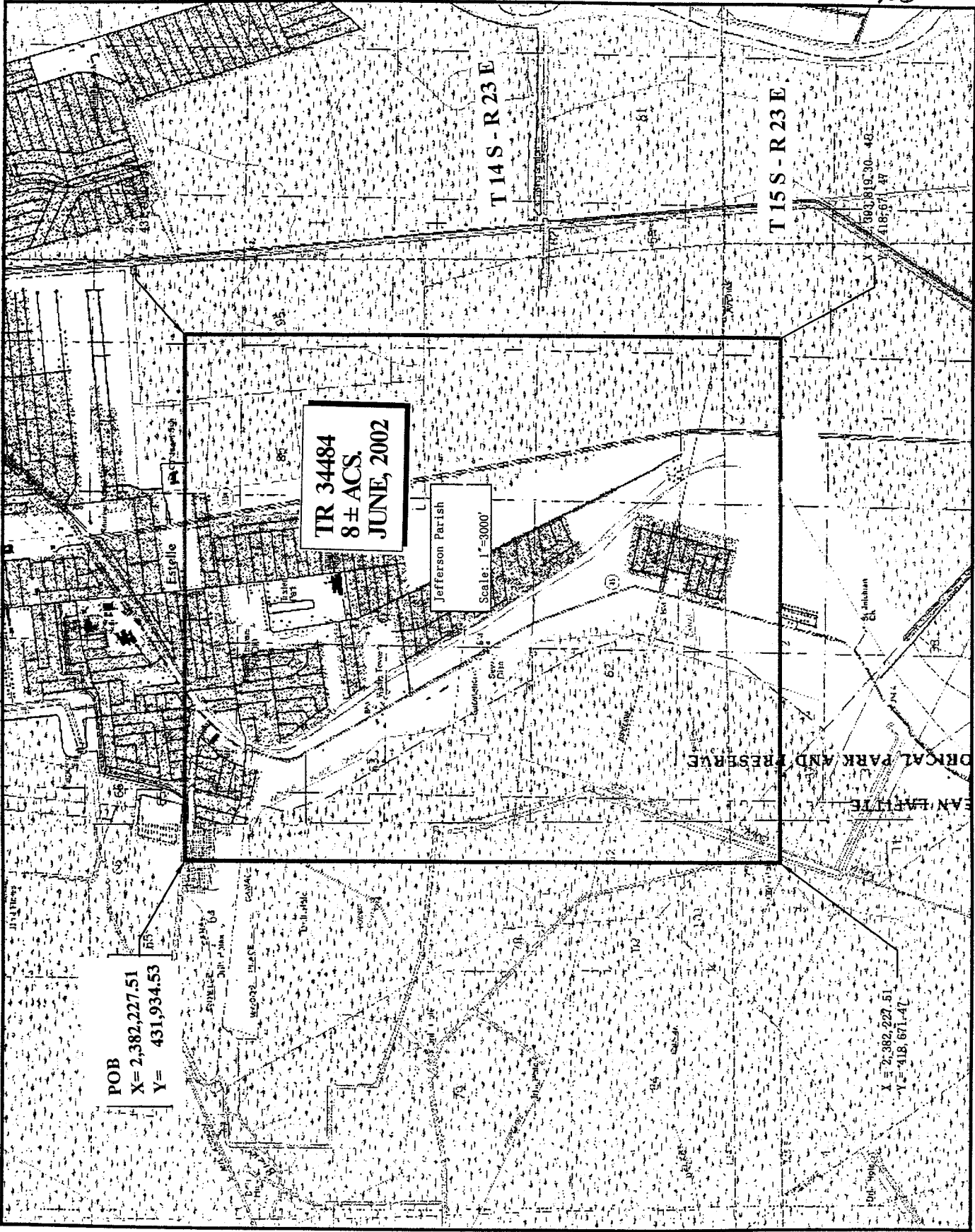
Maps depicting the nominated tract, containing the bearings, distances and coordinates of the nominated tract based on the Louisiana Coordinate System of 1927, North or South Zone, as applicable, are available for public inspection and review at the offices of the Louisiana State Mineral Board from 10:00 a.m. to 3:00 p.m. Monday - Friday.

Any mineral lease selected from the nominated tract and awarded by the Louisiana State Mineral Board shall be without warranty of any kind, either express, implied, or statutory, including, but not limited to, the implied warranties or merchantability and fitness for a particular purpose. Should the mineral lease awarded by the Louisiana State Mineral Board be subsequently modified, cancelled or abrogated due to the existence of conflicting leases, operating agreements, private claims or other existing or future obligations or conditions which may affect all or any portion of the leased tract, it shall not relieve the Lessee of the obligation to pay any bonus due thereon to the Louisiana State Mineral Board, nor shall the Louisiana State Mineral Board be obligated to refund any consideration paid by the Lessee prior to such modification, cancellation, or abrogation, including, but not limited to, bonuses, rents and royalties.

NOTE: The State of Louisiana does hereby reserve, and this lease shall be subject to, the imprescriptible right of surface use in the nature of a servitude in favor of the Department of Natural Resources, including its Offices and Commissions, for the sole purpose of implementing, constructing, servicing and maintaining approved coastal zone management and/or restoration projects. Utilization of any and all rights derived under this lease by the mineral lessee, its agents, successors or assigns, shall not interfere with nor hinder the reasonable surface use by the Department of Natural Resources, its Offices or Commissions, as hereinabove reserved.

Applicant: Jesse B. Newton, III

Bidder	Cash Payment	Price / Acre	Rental	Oil	Gas	Other

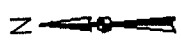


**TR 34484**  
**8 ± ACS.**  
**JUNE, 2002**

Jefferson Parish  
 Scale: 1"=3000'

**POB**  
**X= 2,382,227.51**  
**Y= 431,934.53**

**X = 2,382,227.51**  
**Y = 418,671.47**



**TRACT 34485 - Plaquemines Parish, Louisiana**

All of the lands now or formerly constituting the beds and bottoms of all water bodies of every nature and description and all islands and other lands formed by accretion or reliction, except tax lands, owned by and not under mineral lease from the State of Louisiana on June 12, 2002, situated in Plaquemines Parish, Louisiana, within the following described boundaries: Beginning a point having Coordinates of X = 2,581,600.00 and Y = 243,200.00; thence East 5,400.00 feet; thence South 7,900.00 feet; thence West 4,350.12 feet; thence North 1,402.53 feet to a point on the Eastern Boundary of Conservation Unit F RA SUA Order No. 339-UU-1, also being a point on the Eastern Boundary of State Lease 3279, as amended; thence along State Lease 3279, as amended, boundary the following courses: North 51 degrees 47 minutes 34 seconds East 852.81 feet; North 41 degrees 32 minutes 48 seconds East 539.47 feet; North 88 degrees 19 minutes 30 seconds East 782.91 feet; thence North 01 degrees 40 minutes 34 seconds West 2,240.68 feet; thence North 01 degrees 40 minutes 38 seconds West 846.84 feet; thence North 89 degrees 33 minutes 41 seconds West 938.07 feet; thence North 89 degrees 51 minutes 33 seconds West 1,199.03 feet; thence North 88 degrees 19 minutes 30 seconds West 633.25 feet; thence North 2,428.54 feet to the point of beginning, **LESS AND EXCEPT**, if any, that portion of State Lease No. 3279, as amended, that may lie within the above described tract, containing approximately **66 acres**, as shown outlined on a plat on file in the Office of Mineral Resources, Department of Natural Resources, as provided by the applicant. All bearings, distances and coordinates are based on Louisiana Coordinate System of 1927 (South Zone).

NOTE: The above description of the tract nominated for lease has been provided exclusively by the party nominating the tract for lease.

Maps depicting the nominated tract, containing the bearings, distances and coordinates of the nominated tract based on the Louisiana Coordinate System of 1927, North or South Zone, as applicable, are available for public inspection and review at the offices of the Louisiana State Mineral Board from 10:00 a.m. to 3:00 p.m. Monday - Friday.

Any mineral lease selected from the nominated tract and awarded by the Louisiana State Mineral Board shall be without warranty of any kind, either express, implied, or statutory, including, but not limited to, the implied warranties or merchantability and fitness for a particular purpose. Should the mineral lease awarded by the Louisiana State Mineral Board be subsequently modified, cancelled or abrogated due to the existence of conflicting leases, operating agreements, private claims or other existing or future obligations or conditions which may affect all or any portion of the leased tract, it shall not relieve the Lessee of the obligation to pay any bonus due thereon to the Louisiana State Mineral Board, nor shall the Louisiana State Mineral Board be obligated to refund any consideration paid by the Lessee prior to such modification, cancellation, or abrogation, including, but not limited to, bonuses, rents and royalties.

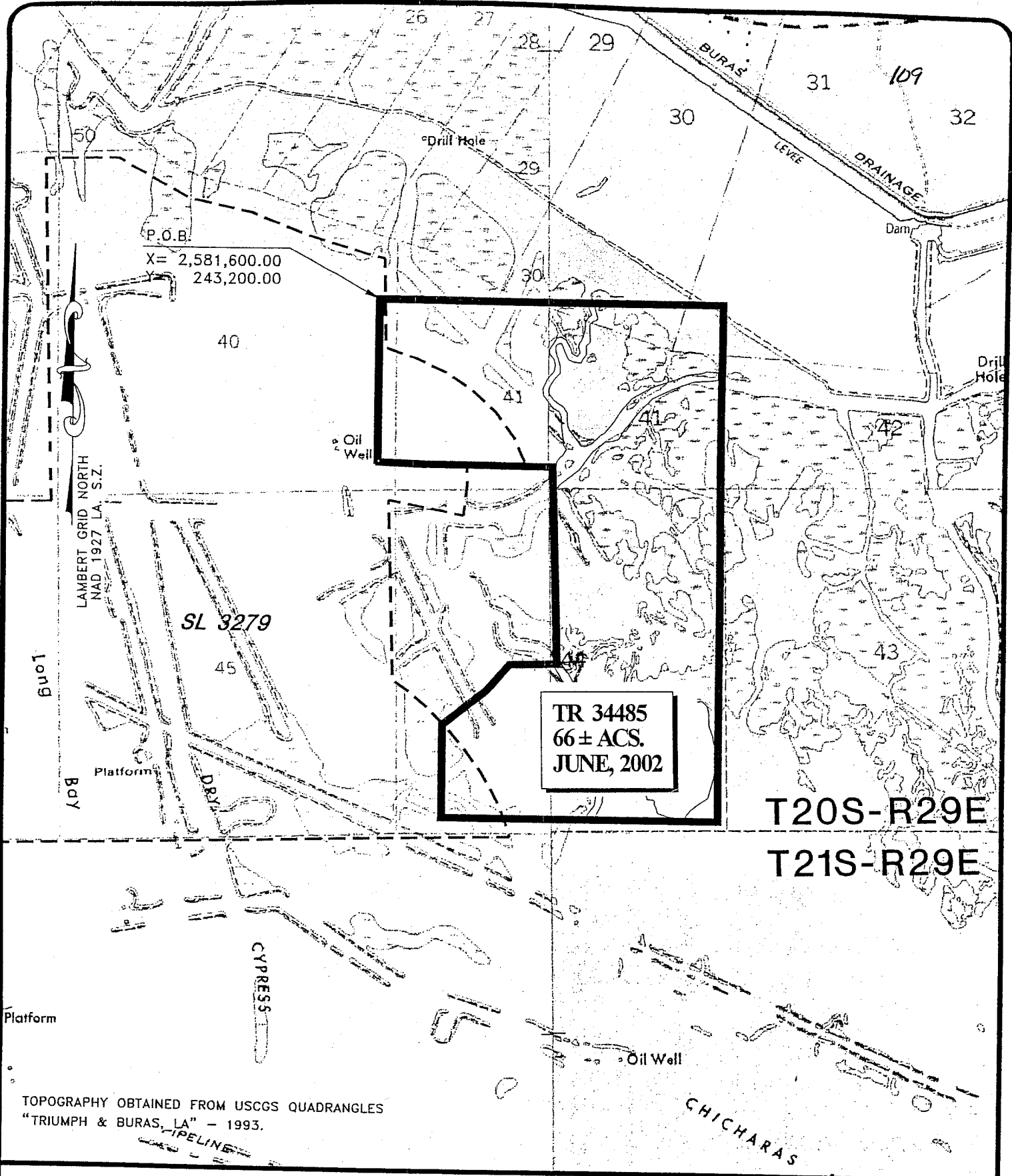
NOTE: The above tract is located in or near an oyster restricted area and all operations in such area must be conducted in strict conformity with the stipulations and/or regulations of the Louisiana Department of Wildlife and Fisheries.

NOTE: The State of Louisiana does hereby reserve, and this lease shall be subject to, the imprescriptible right of surface use in the nature of a servitude in favor of the Department of Natural Resources, including its Offices and Commissions, for the sole purpose of implementing, constructing, servicing and maintaining approved coastal zone management and/or restoration projects. Utilization of any and all rights derived under this lease by the mineral lessee, its agents, successors or assigns, shall not interfere with nor hinder the reasonable surface use by the Department of Natural Resources, its Offices or Commissions, as hereinabove reserved.

Applicant: Petro-Land Resources, Inc.

Bidder	Cash Payment	Price / Acre	Rental	Oil	Gas	Other



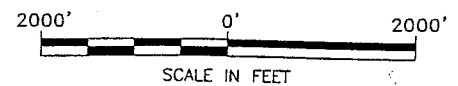


TR 34485  
 66 ± ACS.  
 JUNE, 2002

T20S-R29E  
 T21S-R29E

TOPOGRAPHY OBTAINED FROM USCGS QUADRANGLES  
 "TRIUMPH & BURAS, LA" - 1993.

PLAT TO ACCOMPANY APPLICATION  
 FOR STATE LEASE NOMINATION  
 PLAQUEMINES PARISH, LOUISIANA



**TRACT 34486 - Plaquemines Parish, Louisiana**

All of the lands now or formerly constituting the beds and bottoms of all water bodies of every nature and description and all islands and other lands formed by accretion or reliction, except tax lands, owned by and not under mineral lease from the State of Louisiana on June 12, 2002, situated in Plaquemines Parish, Louisiana, within the following described boundaries: Beginning at a point having Coordinates of X = 2,550,760.35 and Y = 332,815.00; thence South 3,623.48 feet to an interior corner of State Lease No. 16656 having Coordinates of X = 2,550,760.35 and Y = 329,191.52; thence South 59 degrees 28 minutes 57 seconds West 5,993.56 feet along the boundary of said State Lease No. 16656 to its most Westerly Northwest corner having Coordinates of X = 2,545,597.05 and Y = 326,147.98; thence South 1,247.98 feet along the Western boundary of said State Lease No. 16656 to a point having Coordinates of X = 2,545,597.05 and Y = 324,900.00; thence West 8,215.05 feet to a point having Coordinates of X = 2,537,382.00 and Y = 324,900.00; thence North 7,915.00 feet to the Southwest corner of State Lease No. 16461 having Coordinates of X = 2,537,382.00 and Y = 332,815.00; thence East 3,150.00 feet along the South line of said State Lease No. 16461 to its Southeast corner, said corner also being the Southwest corner of State Lease No. 16655, having Coordinates of X = 2,540,532.00 and Y = 332,815.00; thence East 5,184.47 feet along the South line of said State Lease No. 16655 to its Southeast corner having Coordinates of X = 2,545,716.47 and Y = 332,815.00; thence East 5,043.88 feet to the point of beginning, containing approximately **1,965 acres**, as shown outlined on a plat on file in the Office of Mineral Resources, Department of Natural Resources, as provided by the applicant. All bearings, distances and coordinates are based on Louisiana Coordinate System of 1927 (South Zone).

NOTE: The above description of the tract nominated for lease has been provided exclusively by the party nominating the tract for lease.

Maps depicting the nominated tract, containing the bearings, distances and coordinates of the nominated tract based on the Louisiana Coordinate System of 1927, North or South Zone, as applicable, are available for public inspection and review at the offices of the Louisiana State Mineral Board from 10:00 a.m. to 3:00 p.m. Monday - Friday.

Any mineral lease selected from the nominated tract and awarded by the Louisiana State Mineral Board shall be without warranty of any kind, either express, implied, or statutory, including, but not limited to, the implied warranties or merchantability and fitness for a particular purpose. Should the mineral lease awarded by the Louisiana State Mineral Board be subsequently modified, cancelled or abrogated due to the existence of conflicting leases, operating agreements, private claims or other existing of future obligations or conditions which may affect all or any portion of the leased tract, it shall not relieve the Lessee of the obligation to pay any bonus due thereon to the Louisiana State Mineral Board, nor shall the Louisiana State Mineral Board be obligated to refund any consideration paid by the Lessee prior to such modification, cancellation, or abrogation, including, but not limited to, bonuses, rents and royalties.

NOTE: The above tract is located in or near an oyster restricted area and all operations in such area must be conducted in strict conformity with the stipulations and/or regulations of the Louisiana Department of Wildlife and Fisheries.

NOTE: The State of Louisiana does hereby reserve, and this lease shall be subject to, the imprescriptible right of surface use in the nature of a servitude in favor of the Department of Natural Resources, including its Offices and Commissions, for the sole purpose of implementing, constructing, servicing and maintaining approved coastal zone management and/or restoration projects. Utilization of any and all rights derived under this lease by the mineral lessee, its agents, successors or assigns, shall not interfere with nor hinder the reasonable surface use by the Department of Natural Resources, its Offices or Commissions, as hereinabove reserved.

Applicant: Lauroline, Ltd.

Bidder	Cash Payment	Price / Acre	Rental	Oil	Gas	Other

**P.O.B.**  
 X = 2,550,760.35  
 Y = 332,815.00

NAD 1927 (South Zone)

S.L. 16655

S.L. 16461

S.L. 16656

TR 34486  
 1,965 ± ACS.  
 JUNE, 2002

R 15 E  
 R 16 E

TRIPLE

CRAB

BAY

CRABE

BAY

Dog

T 7 5

**TRACT 34487 - Plaquemines Parish, Louisiana**

All of the lands now or formerly constituting the beds and bottoms of all water bodies of every nature and description and all islands and other lands formed by accretion or reliction, except tax lands, owned by and not under mineral lease from the State of Louisiana on June 12, 2002, situated in Plaquemines Parish, Louisiana, within the following described boundaries: Beginning at a point having Coordinates of X = 2,550,760.35 and Y = 332,815.00; thence East 11,239.65 feet to a point having Coordinates of X = 2,562,000.00 and Y = 332,815.00; thence South 10,915.00 feet to a point having Coordinates of X = 2,562,000.00 and Y = 321,900.00; thence West 15,700.00 feet to a point having Coordinates of X = 2,546,300.00 and Y = 321,900.00; thence North 1,768.44 feet to a point on the South line of State Lease No. 16656 having Coordinates of X = 2,546,300.00 and Y = 323,668.44; thence North 82 degrees 10 minutes 30 seconds East 9,859.86 feet along the South line of said State Lease No. 16656 to its Southeast corner having Coordinates of X = 2,556,068.05 and Y = 325,010.84; thence North 00 degrees 29 minutes 56 seconds West 880.73 feet along the East line of said State Lease No. 16656 to the Southwest corner of State Lease No. 16657 having Coordinates of X = 2,556,060.38 and Y = 325,891.54; thence North 59 degrees 48 minutes 57 seconds East 1,479.87 feet along the South line of said State Lease No. 16657 to its Southeast corner having Coordinates of X = 2,557,339.60 and Y = 326,635.59; thence North 1,600.00 feet along the East line of said State Lease No. 16657 to its Northeast corner having Coordinates of X = 2,557,339.60 and Y = 328,235.59; thence South 88 degrees 03 minutes 26 seconds West 1,300.00 feet along the North line of said State Lease No. 16657 to its Northwest corner, said corner also being a point on the East line of said State Lease No. 16656, having Coordinates of X = 2,556,040.35 and Y = 328,191.51; thence North 1,000.00 feet along the East line of said State Lease No. 16656 to its Northeast corner having Coordinates of X = 2,556,040.35 and Y = 329,191.51; thence West 5,280.00 feet along the North line of said State Lease No. 16656 to an interior corner having Coordinates of X = 2,550,760.35 and Y = 329,191.51; thence North 3,623.48 feet to the point of beginning, containing approximately 1,958 acres, as shown outlined on a plat on file in the Office of Mineral Resources, Department of Natural Resources, as provided by the applicant. All bearings, distances and coordinates are based on Louisiana Coordinate System of 1927 (South Zone).

NOTE: The above description of the tract nominated for lease has been provided exclusively by the party nominating the tract for lease.

Maps depicting the nominated tract, containing the bearings, distances and coordinates of the nominated tract based on the Louisiana Coordinate System of 1927, North or South Zone, as applicable, are available for public inspection and review at the offices of the Louisiana State Mineral Board from 10:00 a.m. to 3:00 p.m. Monday - Friday.

Any mineral lease selected from the nominated tract and awarded by the Louisiana State Mineral Board shall be without warranty of any kind, either express, implied, or statutory, including, but not limited to, the implied warranties or merchantability and fitness for a particular

purpose. Should the mineral lease awarded by the Louisiana State Mineral Board be subsequently modified, cancelled or abrogated due to the existence of conflicting leases, operating agreements, private claims or other existing or future obligations or conditions which may affect all or any portion of the leased tract, it shall not relieve the Lessee of the obligation to pay any bonus due thereon to the Louisiana State Mineral Board, nor shall the Louisiana State Mineral Board be obligated to refund any consideration paid by the Lessee prior to such modification, cancellation, or abrogation, including, but not limited to, bonuses, rents and royalties.

NOTE: The above tract is located in or near an oyster restricted area and all operations in such area must be conducted in strict conformity with the stipulations and/or regulations of the Louisiana Department of Wildlife and Fisheries.

NOTE: The State of Louisiana does hereby reserve, and this lease shall be subject to, the imprescriptible right of surface use in the nature of a servitude in favor of the Department of Natural Resources, including its Offices and Commissions, for the sole purpose of implementing, constructing, servicing and maintaining approved coastal zone management and/or restoration projects. Utilization of any and all rights derived under this lease by the mineral lessee, its agents, successors or assigns, shall not interfere with nor hinder the reasonable surface use by the Department of Natural Resources, its Offices or Commissions, as hereinabove reserved.

Applicant: Lauroline, Ltd.

Bidder	Cash Payment	Price / Acre	Rental	Oil	Gas	Other

NAD 1927 (South Zone)

R  
E  
16

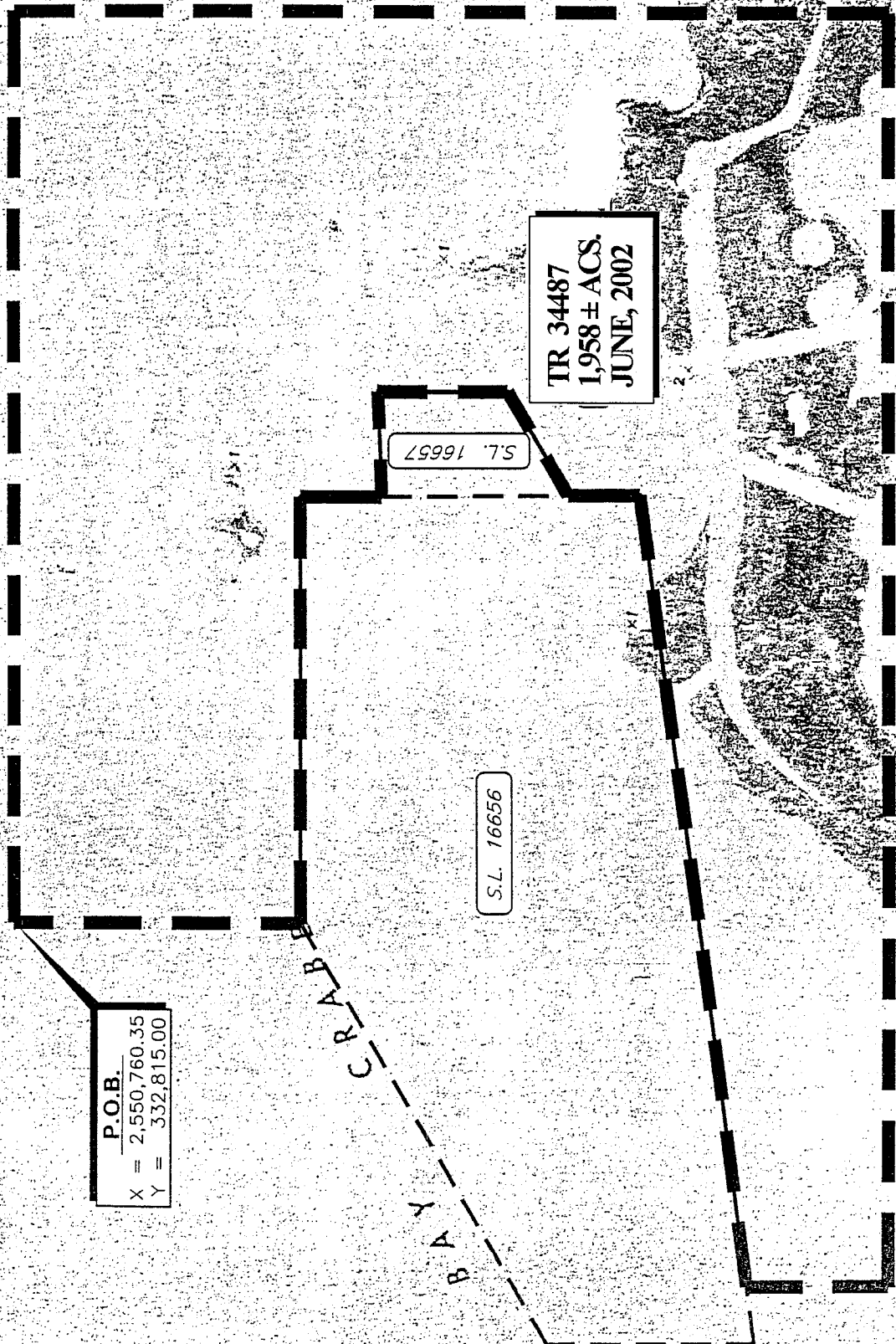
P.O.B.  
X = 2,550,760.35  
Y = 332,815.00

S.L. 16657

TR 34487  
1,958 ± ACS.  
JUNE, 2002

S.L. 16656

B  
A  
Y  
C  
R  
A  
B  
E



**TRACT 34488 - Plaquemines Parish, Louisiana**

All of the lands now or formerly constituting the beds and bottoms of all water bodies of every nature and description and all islands and other lands formed by accretion or reliction, except tax lands, owned by and not under mineral lease from the State of Louisiana on June 12, 2002, situated in Plaquemines Parish, Louisiana, within the following described boundaries: Beginning at a point having Coordinates of X = 2,546,300.00 and Y = 312,500.00; thence West 8,918.00 feet to a point having Coordinates of X = 2,537,382.00 and Y = 312,500.00; thence North 12,400.00 feet to a point having Coordinates of X = 2,537,382.00 and Y = 324,900.00; thence East 8,215.05 feet to a point on the West line of State Lease No. 16656 having Coordinates of X = 2,545,597.05 and Y = 324,900.00; thence South 1,328.16 feet along the West line of said State Lease No. 16656 to its Southwest corner having Coordinates of X = 2,545,597.05 and Y = 323,571.84; thence North 82 degrees 10 minutes 30 seconds East 709.56 feet along the South line of said State Lease No. 16656 to a point having Coordinates of X = 2,546,300.00 and Y = 323,668.44; thence South 11,168.44 feet to the point of beginning, containing approximately 2,402 acres, as shown outlined on a plat on file in the Office of Mineral Resources, Department of Natural Resources, as provided by the applicant. All bearings, distances and coordinates are based on Louisiana Coordinate System of 1927 (South Zone).

NOTE: The above description of the tract nominated for lease has been provided exclusively by the party nominating the tract for lease.

Maps depicting the nominated tract, containing the bearings, distances and coordinates of the nominated tract based on the Louisiana Coordinate System of 1927, North or South Zone, as applicable, are available for public inspection and review at the offices of the Louisiana State Mineral Board from 10:00 a.m. to 3:00 p.m. Monday - Friday.

Any mineral lease selected from the nominated tract and awarded by the Louisiana State Mineral Board shall be without warranty of any kind, either express, implied, or statutory, including, but not limited to, the implied warranties or merchantability and fitness for a particular purpose. Should the mineral lease awarded by the Louisiana State Mineral Board be subsequently modified, cancelled or abrogated due to the existence of conflicting leases, operating agreements, private claims or other existing or future obligations or conditions which may affect all or any portion of the leased tract, it shall not relieve the Lessee of the obligation to pay any bonus due thereon to the Louisiana State Mineral Board, nor shall the Louisiana State Mineral Board be obligated to refund any consideration paid by the Lessee prior to such modification, cancellation, or abrogation, including, but not limited to, bonuses, rents and royalties.

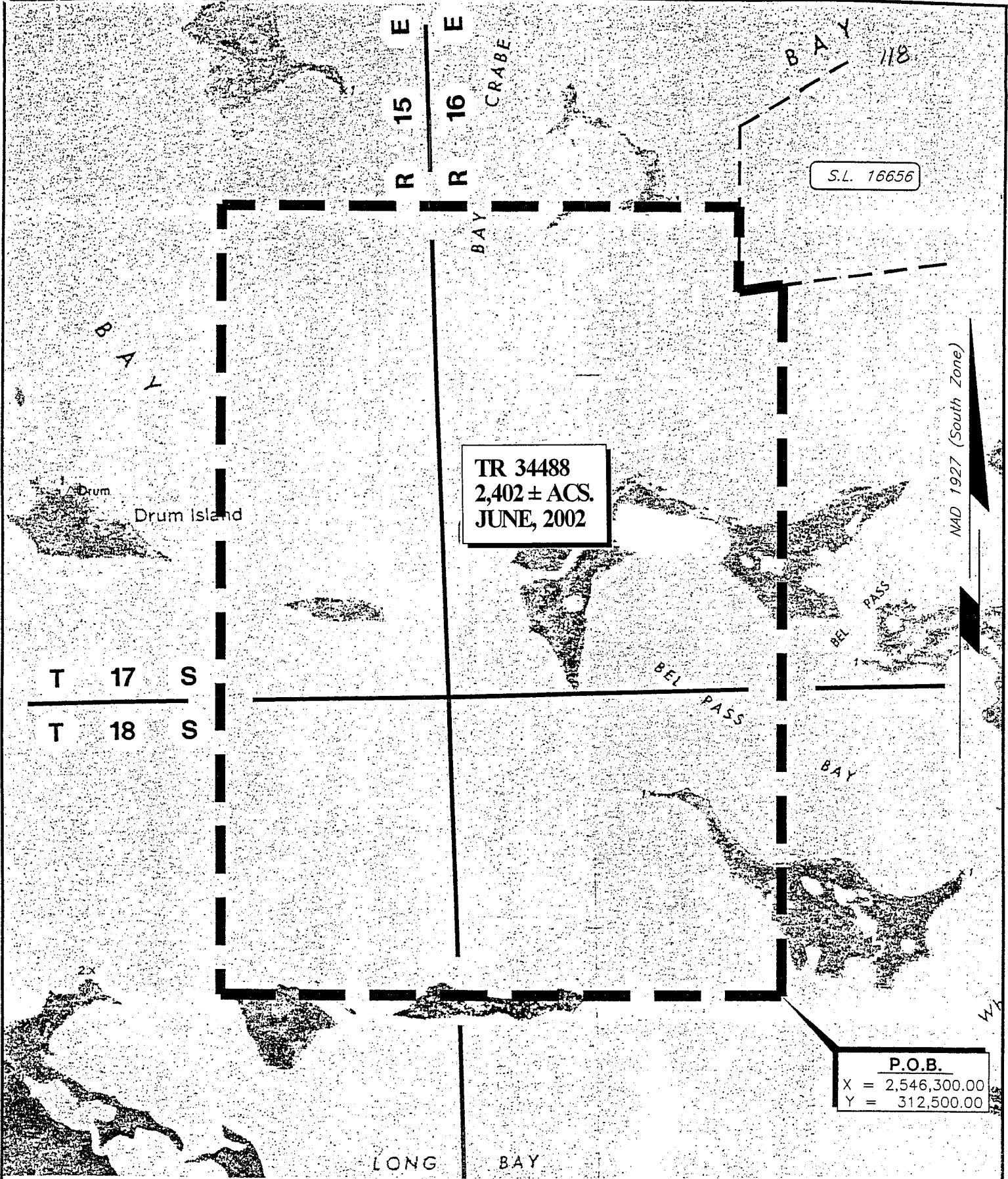
NOTE: The above tract is located in or near an oyster restricted area and all operations in such area must be conducted in strict conformity with the stipulations and/or regulations of the Louisiana Department of Wildlife and Fisheries.



NOTE: The State of Louisiana does hereby reserve, and this lease shall be subject to, the imprescriptible right of surface use in the nature of a servitude in favor of the Department of Natural Resources, including its Offices and Commissions, for the sole purpose of implementing, constructing, servicing and maintaining approved coastal zone management and/or restoration projects. Utilization of any and all rights derived under this lease by the mineral lessee, its agents, successors or assigns, shall not interfere with nor hinder the reasonable surface use by the Department of Natural Resources, its Offices or Commissions, as hereinabove reserved.

Applicant: Lauroline, Ltd.

Bidder	Cash Payment	Price / Acre	Rental	Oil	Gas	Other



TR 34488  
2,402 ± ACS.  
JUNE, 2002

S.L. 16656

T 17 S  
T 18 S

P.O.B.  
X = 2,546,300.00  
Y = 312,500.00

PLAQUEMINES PARISH, LOUISIANA

SCALE : 1" = 2000'

**TRACT 34489 - Plaquemines Parish, Louisiana**

All of the lands now or formerly constituting the beds and bottoms of all water bodies of every nature and description and all islands and other lands formed by accretion or reliction, except tax lands, owned by and not under mineral lease from the State of Louisiana on June 12, 2002, situated in Plaquemines Parish, Louisiana, within the following described boundaries: Beginning at a point having Coordinates of X = 2,546,300.00 and Y = 312,500.00; thence North 9,400.00 feet to a point having Coordinates of X = 2,546,300.00 and Y = 321,900.00; thence East 15,700.00 feet to a point having Coordinates of X = 2,562,000.00 and Y = 321,900.00; thence South 9,400.00 feet to a point having Coordinates of X = 2,562,000.00 and Y = 312,500.00; thence West 15,700.00 feet to the point of beginning, containing approximately **2,296 acres**, as shown outlined on a plat on file in the Office of Mineral Resources, Department of Natural Resources, as provided by the applicant. All bearings, distances and coordinates are based on Louisiana Coordinate System of 1927 (South Zone).

NOTE: The above description of the tract nominated for lease has been provided exclusively by the party nominating the tract for lease.

Maps depicting the nominated tract, containing the bearings, distances and coordinates of the nominated tract based on the Louisiana Coordinate System of 1927, North or South Zone, as applicable, are available for public inspection and review at the offices of the Louisiana State Mineral Board from 10:00 a.m. to 3:00 p.m. Monday - Friday.

Any mineral lease selected from the nominated tract and awarded by the Louisiana State Mineral Board shall be without warranty of any kind, either express, implied, or statutory, including, but not limited to, the implied warranties or merchantability and fitness for a particular purpose. Should the mineral lease awarded by the Louisiana State Mineral Board be subsequently modified, cancelled or abrogated due to the existence of conflicting leases, operating agreements, private claims or other existing or future obligations or conditions which may affect all or any portion of the leased tract, it shall not relieve the Lessee of the obligation to pay any bonus due thereon to the Louisiana State Mineral Board, nor shall the Louisiana State Mineral Board be obligated to refund any consideration paid by the Lessee prior to such modification, cancellation, or abrogation, including, but not limited to, bonuses, rents and royalties.

NOTE: The above tract is located in or near an oyster restricted area and all operations in such area must be conducted in strict conformity with the stipulations and/or regulations of the Louisiana Department of Wildlife and Fisheries.

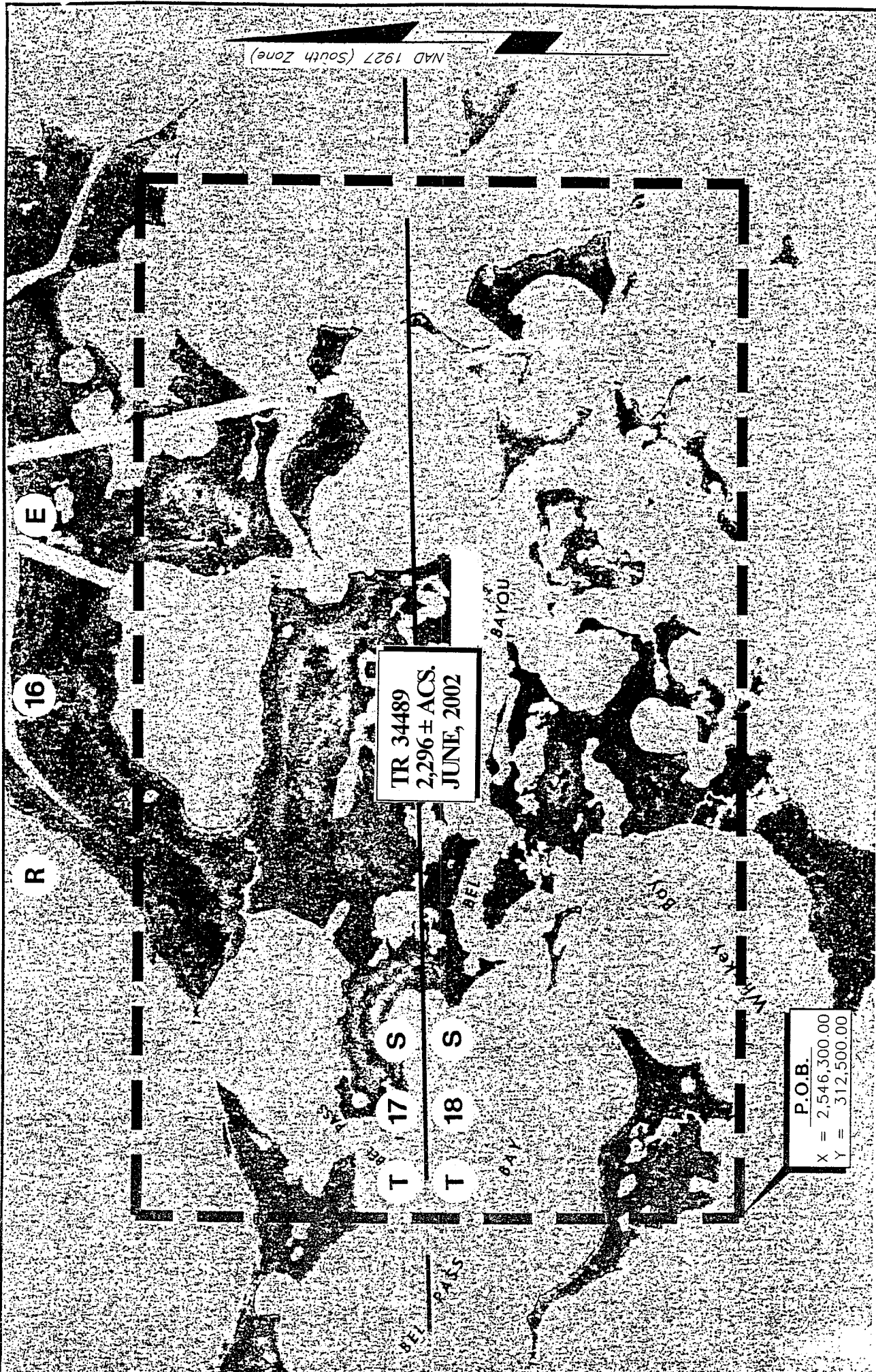
NOTE: The State of Louisiana does hereby reserve, and this lease shall be subject to, the imprescriptible right of surface use in the nature of a servitude in favor of the Department of Natural Resources, including its Offices and Commissions, for the sole purpose of implementing, constructing, servicing and maintaining approved coastal zone management and/or restoration projects. Utilization of any and all rights derived

under this lease by the mineral lessee, its agents, successors or assigns, shall not interfere with nor hinder the reasonable surface use by the Department of Natural Resources, its Offices or Commissions, as hereinabove reserved.

Applicant: Lauroline, Ltd.

Faint, illegible text, possibly bleed-through from the reverse side of the page.

Bidder	Cash Payment	Price / Acre	Rental	Oil	Gas	Other



TR 34489  
 2,296 ± ACS.  
 JUNE, 2002

P.O.B.  
 X = 2,546,300.00  
 Y = 312,500.00

NAD 1927 (South Zone)