

TRACT 45131 - Red River Parish, Louisiana

All of the lands now or formerly constituting the beds and bottoms of all water bodies of every nature and description as to which title is vested in the State of Louisiana, together with all islands arising therein and other lands formed by accretion or by reliction, where allowed by law, excepting tax adjudicated lands, and not presently under mineral lease on May 8, 2019, situated in Red River Parish, Louisiana, and more particularly described as follows: Beginning at a point on the North boundary of State Lease No. 19693 having Coordinates of X = 1,750,887.07 and Y = 570,404.43; thence East 5,304.32 feet to a point on said boundary of State Lease No. 19693 having Coordinates of X = 1,756,191.39 and Y = 570,404.43; thence along the boundary of said State Lease No. 19693 the following: South 00 degrees 04 minutes 30 seconds East 4,155.08 feet to a point having Coordinates of X = 1,756,196.82 and Y = 566,249.35, North 89 degrees 16 minutes 11 seconds West 5,324.56 feet to a point having Coordinates of X = 1,750,872.70 and Y = 566,317.22, and North 00 degrees 12 minutes 05 seconds East 4,087.24 feet to the point of beginning, containing approximately **7 acres**, all as more particularly outlined on a plat on file in the Office of Mineral Resources, Department of Natural Resources. All bearings, distances and coordinates are based on Louisiana Coordinate System of 1927, (North or South Zone), where applicable.

NOTE: The above description of the Tract nominated for lease has been provided and corrected, where required, exclusively by the nomination party. Any mineral lease selected from this Tract and awarded by the Louisiana State Mineral and Energy Board shall be without warranty of any kind, either express, implied, or statutory, including, but not limited to, the implied warranties of merchantability and fitness for a particular purpose. Should the mineral lease awarded by the Louisiana State Mineral and Energy Board be subsequently modified, cancelled or abrogated due to the existence of conflicting leases, operating agreements, private claims or other future obligations or conditions which may affect all or any portion of the leased Tract, it shall not relieve the Lessee of the obligation to pay any bonus due thereon to the Louisiana State Mineral and Energy Board, nor shall the Louisiana State Mineral and Energy Board be obligated to refund any consideration paid by the Lessor prior to such modification, cancellation, or abrogation, including, but not limited to, bonuses, rentals and royalties.

Applicant: BARKER ENERGY

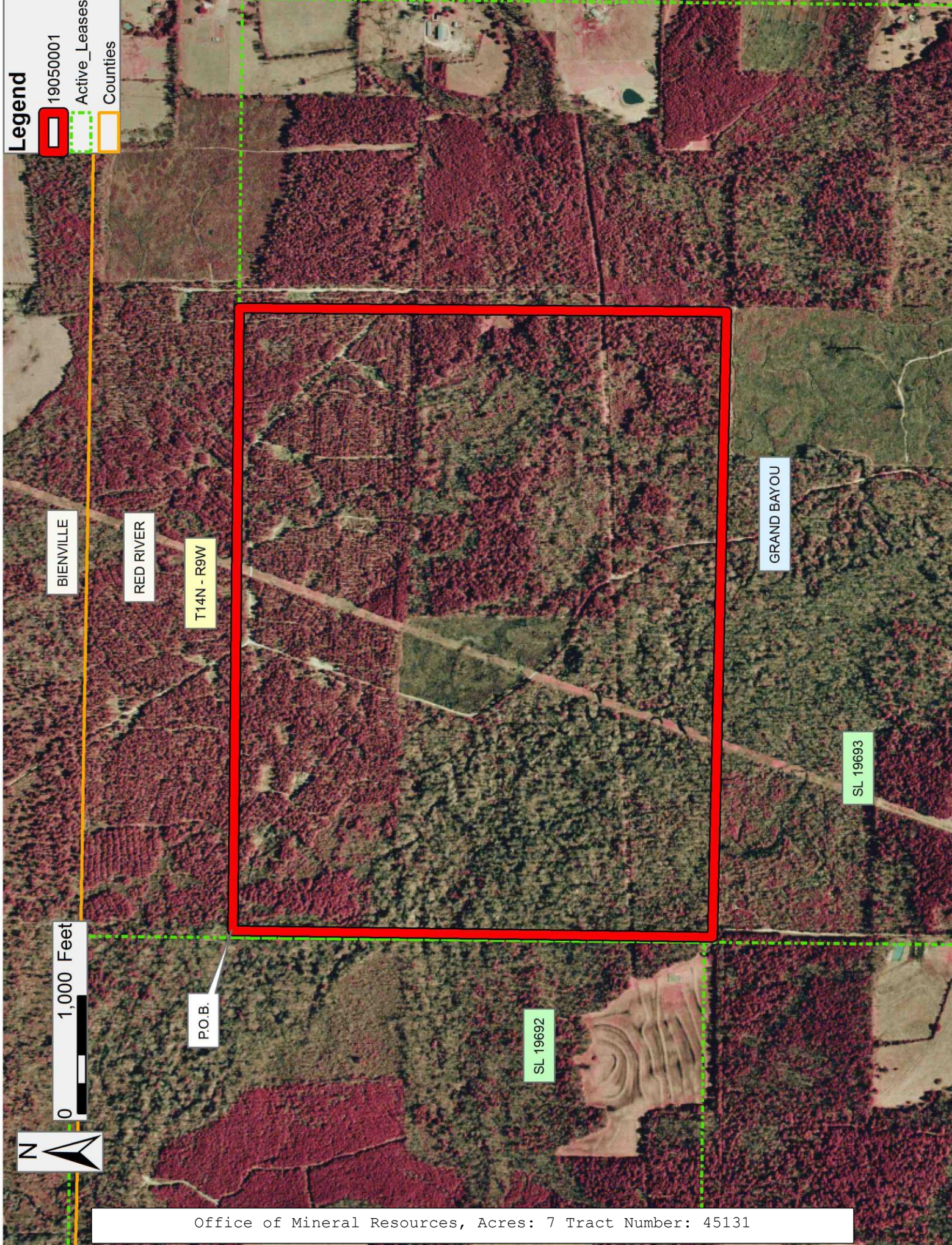
| Bidder | Cash Payment | Price/ Acre | Rental | Oil | Gas | Other |
|--------|-----------------|----------------|--------|-----|-----|-------|
| | | | | | | |
| | | | | | | |
| | | | | | | |
| | | | | | | |

Legend

19050001

Active_Leases

Counties



TRACT 45132 - De Soto and Natchitoches Parishes, Louisiana

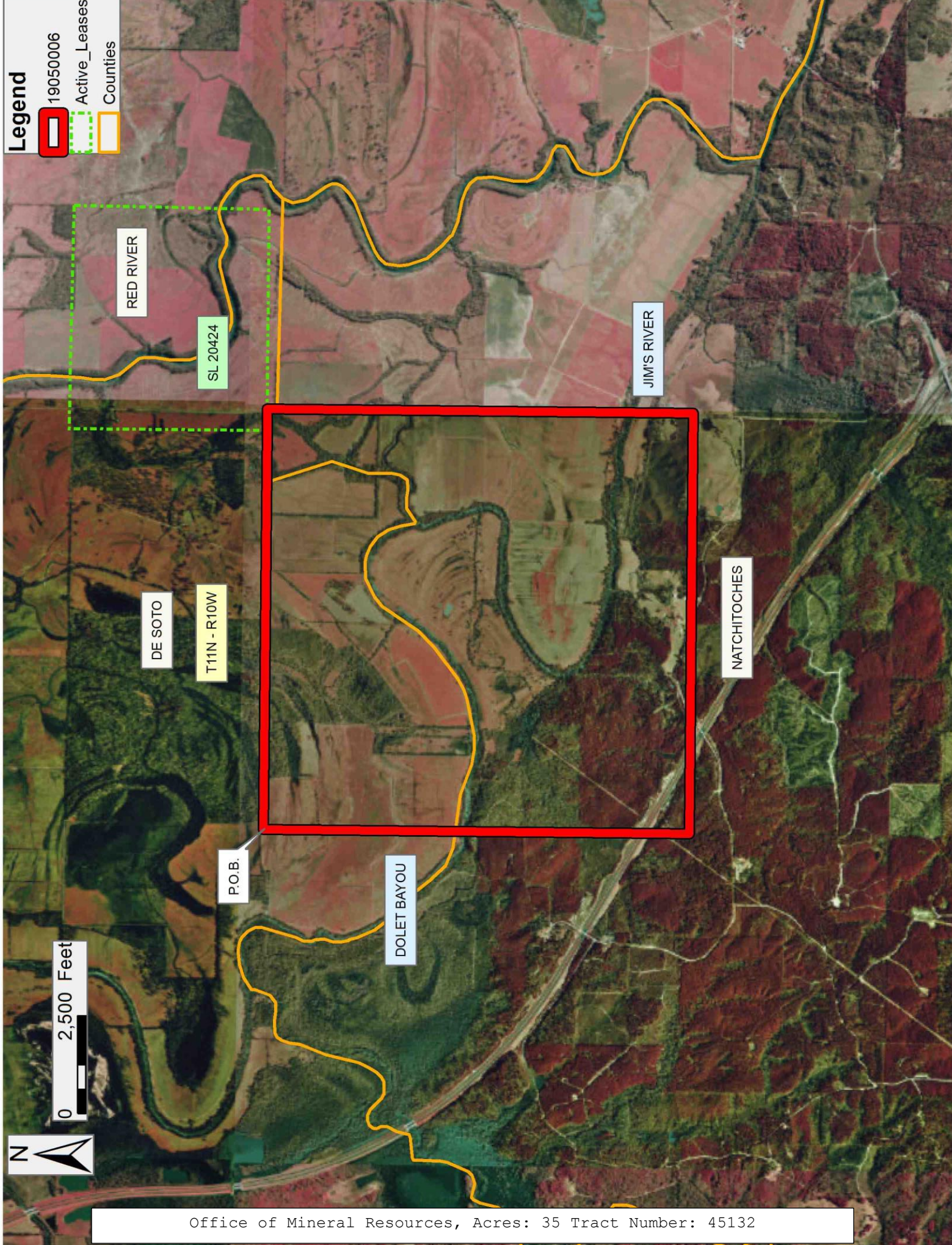
All of the lands now or formerly constituting the beds and bottoms of all water bodies of every nature and description as to which title is vested in the State of Louisiana, together with all islands arising therein and other lands formed by accretion or by reliction, where allowed by law, excepting tax adjudicated lands, and not presently under mineral lease on May 8, 2019, situated in De Soto and Natchitoches Parishes, Louisiana, and more particularly described as follows: Beginning at a point having Coordinates of X = 1,718,797.89 and Y = 461,670.00; thence East 10,202.11 feet to the Southwest corner of State Lease No. 20424 having Coordinates of X = 1,729,000.00 and Y = 461,670.00; thence East 545.52 feet along the Southern boundary of said State Lease No. 20424, to a point having Coordinates of X = 1,729,545.52 and Y = 461,670.00; thence South 10,897.45 feet to a point having Coordinates of X = 1,729,545.52 and Y = 450,772.55; thence West 10,747.63 feet to a point having Coordinates of X = 1,718,797.89 and Y = 450,772.55; thence North 10,897.45 feet to the point of beginning, (This tract includes only waterbottoms claimed and owned by the state and specifically excludes any land which the state may claim or own and to which the mineral rights are vested in the state), containing approximately **35 acres**, all as more particularly outlined on a plat on file in the Office of Mineral Resources, Department of Natural Resources. All bearings, distances and coordinates are based on Louisiana Coordinate System of 1927, (North or South Zone), where applicable.

NOTE: The above description of the Tract nominated for lease has been provided and corrected, where required, exclusively by the nomination party. Any mineral lease selected from this Tract and awarded by the Louisiana State Mineral and Energy Board shall be without warranty of any kind, either express, implied, or statutory, including, but not limited to, the implied warranties of merchantability and fitness for a particular purpose. Should the mineral lease awarded by the Louisiana State Mineral and Energy Board be subsequently modified, cancelled or abrogated due to the existence of conflicting leases, operating agreements, private claims or other future obligations or conditions which may affect all or any portion of the leased Tract, it shall not relieve the Lessee of the obligation to pay any bonus due thereon to the Louisiana State Mineral and Energy Board, nor shall the Louisiana State Mineral and Energy Board be obligated to refund any consideration paid by the Lessor prior to such modification, cancellation, or abrogation, including, but not limited to, bonuses, rentals and royalties.

NOTE: The Office of Mineral Resources will require a minimum royalty of 25%.

Applicant: CYPRESS ENERGY CORPORATION

| Bidder | Cash Payment | Price/ Acre | Rental | Oil | Gas | Other |
|--------|-----------------|----------------|--------|-----|-----|-------|
| | | | | | | |
| | | | | | | |
| | | | | | | |
| | | | | | | |



Legend

- 19050006
- Active_Leases
- Counties

RED RIVER

SL 20424

JIM'S RIVER

DE SOTO

T11N - R10W

NATCHITOCHES

P.O.B.

DOLET BAYOU

0 2,500 Feet



TRACT 45133 - Lafourche and Terrebonne Parishes, Louisiana

All of the lands now or formerly constituting the beds and bottoms of all water bodies of every nature and description as to which title is vested in the State of Louisiana, together with all islands arising therein and other lands formed by accretion or by reliction, where allowed by law, excepting tax adjudicated lands, and not presently under mineral lease on May 8, 2019, situated in Lafourche and Terrebonne Parishes, Louisiana, and more particularly described as follows: Beginning at a point having Coordinates of X = 2,255,779.89 and Y = 305,424.04; thence East 16,409.95 feet to a point having Coordinates of X = 2,272,189.84 and Y = 305,424.04; thence South 15,509.93 feet to a point having Coordinates of X = 2,272,189.84 and Y = 289,914.11; thence West 16,409.95 feet to a point having Coordinates of X = 2,255,779.89 and Y = 289,914.11; thence North 15,509.93 feet to the point of beginning, (This tract includes only waterbottoms claimed and owned by the state and specifically excludes any land which the state or Wildlife and Fisheries may claim or own and to which the mineral rights are vested in them), **LESS AND EXCEPT** any waterbottoms that lie within or are adjacent to the Pointe-Aux-Chenes Wildlife Management Area, containing approximately **15 acres**, all as more particularly outlined on a plat on file in the Office of Mineral Resources, Department of Natural Resources. All bearings, distances and coordinates are based on Louisiana Coordinate System of 1927, (North or South Zone), where applicable.

NOTE: The above description of the Tract nominated for lease has been provided and corrected, where required, exclusively by the nomination party. Any mineral lease selected from this Tract and awarded by the Louisiana State Mineral and Energy Board shall be without warranty of any kind, either express, implied, or statutory, including, but not limited to, the implied warranties of merchantability and fitness for a particular purpose. Should the mineral lease awarded by the Louisiana State Mineral and Energy Board be subsequently modified, cancelled or abrogated due to the existence of conflicting leases, operating agreements, private claims or other future obligations or conditions which may affect all or any portion of the leased Tract, it shall not relieve the Lessee of the obligation to pay any bonus due thereon to the Louisiana State Mineral and Energy Board, nor shall the Louisiana State Mineral and Energy Board be obligated to refund any consideration paid by the Lessor prior to such modification, cancellation, or abrogation, including, but not limited to, bonuses, rentals and royalties.

NOTE: The State of Louisiana does hereby reserve, and this lease shall be subject to, the imprescriptible right of surface use in the nature of a servitude in favor of the Department of Natural Resources, including its Offices and Commissions, for the sole purpose of implementing, constructing, servicing and maintaining approved coastal zone management and/or restoration projects. Utilization of any and all rights derived under this lease by the mineral lessee, its agents, successors or assigns, shall not interfere with nor hinder the reasonable surface use by the Department of Natural Resources, its Offices or Commissions, as herein above reserved.

Applicant: DELTA LANDS EXPLORATION, INC.

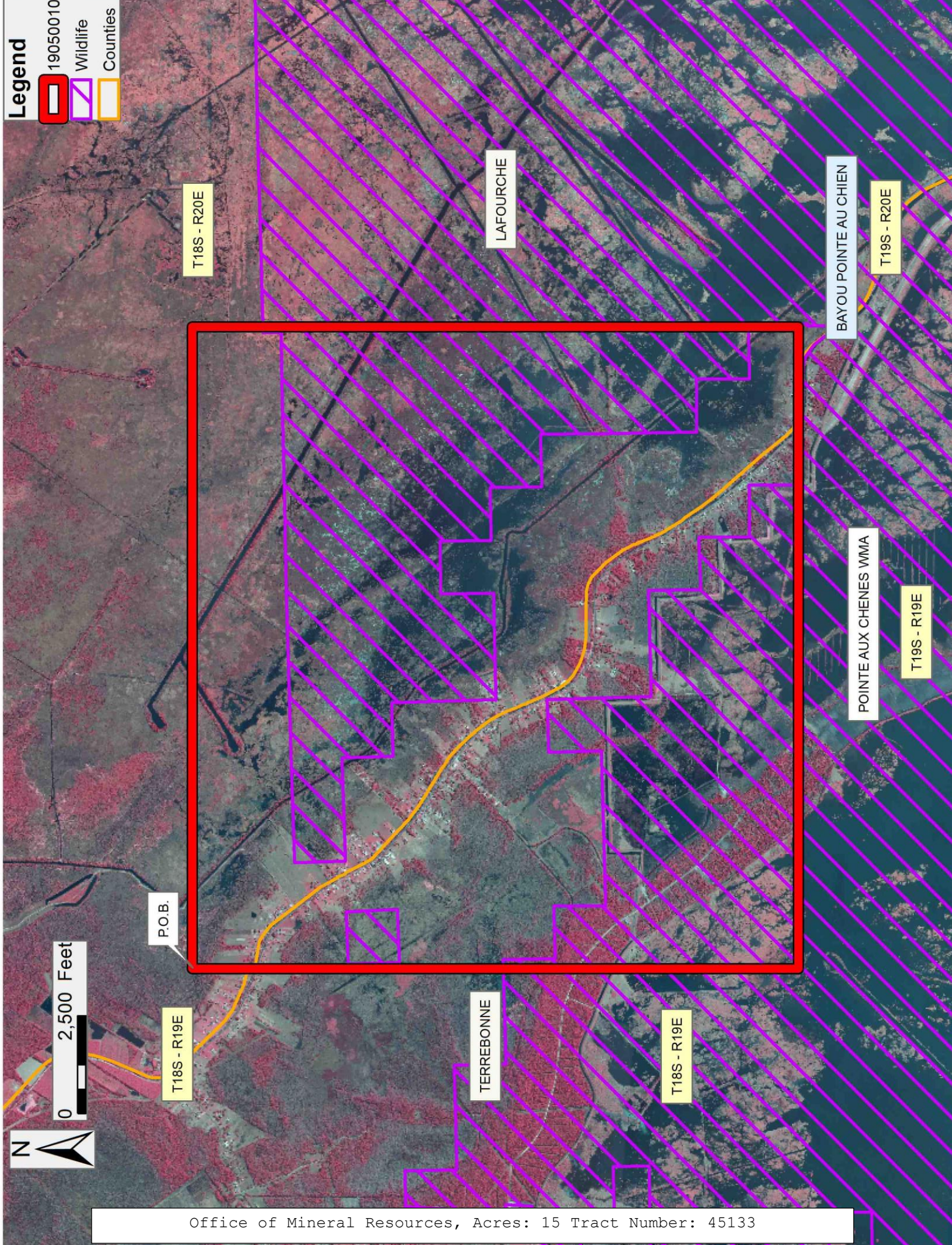
| Bidder | Cash Payment | Price/ Acre | Rental | Oil | Gas | Other |
|--------|-----------------|----------------|--------|-----|-----|-------|
| | | | | | | |
| | | | | | | |
| | | | | | | |
| | | | | | | |

Legend

19050010

Wildlife

Counties



TRACT 45134 - Plaquemines Parish, Louisiana

All of the lands now or formerly constituting the beds and bottoms of all water bodies of every nature and description as to which title is vested in the State of Louisiana, together with all islands arising therein and other lands formed by accretion or by reliction, where allowed by law, excepting tax adjudicated lands, and not presently under mineral lease on May 8, 2019, situated in Plaquemines Parish, Louisiana, and more particularly described as follows: Beginning at the Southeast corner of State Lease No. 21845 having Coordinates of X = 2,431,793.00 and Y = 297,478.12; thence North 2,772.47 feet along the East line of said State Lease No. 21845 to its Northeast corner having Coordinates of X = 2,431,793.00 and Y = 300,250.59; thence East 2,607.00 feet to a point having Coordinates of X = 2,434,400.00 and Y = 300,250.59; thence South 4,350.59 feet to a point having Coordinates of X = 2,434,400.00 and Y = 295,900.00; thence West 2,607.00 feet to a point having Coordinates of X = 2,431,793.00 and Y = 295,900.00; thence North 1,578.12 feet to the point of beginning, containing approximately **258 acres**, all as more particularly outlined on a plat on file in the Office of Mineral Resources, Department of Natural Resources. All bearings, distances and coordinates are based on Louisiana Coordinate System of 1927, (North or South Zone), where applicable.

NOTE: The above description of the Tract nominated for lease has been provided and corrected, where required, exclusively by the nomination party. Any mineral lease selected from this Tract and awarded by the Louisiana State Mineral and Energy Board shall be without warranty of any kind, either express, implied, or statutory, including, but not limited to, the implied warranties of merchantability and fitness for a particular purpose. Should the mineral lease awarded by the Louisiana State Mineral and Energy Board be subsequently modified, cancelled or abrogated due to the existence of conflicting leases, operating agreements, private claims or other future obligations or conditions which may affect all or any portion of the leased Tract, it shall not relieve the Lessee of the obligation to pay any bonus due thereon to the Louisiana State Mineral and Energy Board, nor shall the Louisiana State Mineral and Energy Board be obligated to refund any consideration paid by the Lessor prior to such modification, cancellation, or abrogation, including, but not limited to, bonuses, rentals and royalties.

NOTE: The State of Louisiana does hereby reserve, and this lease shall be subject to, the imprescriptible right of surface use in the nature of a servitude in favor of the Department of Natural Resources, including its Offices and Commissions, for the sole purpose of implementing, constructing, servicing and maintaining approved coastal zone management and/or restoration projects. Utilization of any and all rights derived under this lease by the mineral lessee, its agents, successors or assigns, shall not interfere with nor hinder the reasonable surface use by the Department of Natural Resources, its Offices or Commissions, as herein above reserved.

Applicant: EMMA EXPLORATION

| Bidder | Cash Payment | Price/ Acre | Rental | Oil | Gas | Other |
|--------|-----------------|----------------|--------|-----|-----|-------|
| | | | | | | |
| | | | | | | |
| | | | | | | |
| | | | | | | |



0 1,000 Feet

Legend

- 19050004
- Active_Leases
- Counties

JEFFERSON

PLAQUEMINES

BAYOU BARATARIA

SL 21845

P.O.B.

TRACT 45135 - Jefferson and Plaquemines Parishes, Louisiana

All of the lands now or formerly constituting the beds and bottoms of all water bodies of every nature and description as to which title is vested in the State of Louisiana, together with all islands arising therein and other lands formed by accretion or by reliction, where allowed by law, excepting tax adjudicated lands, and not presently under mineral lease on May 8, 2019, situated in Jefferson and Plaquemines Parishes, Louisiana, and more particularly described as follows: Beginning at the Southeast corner of State Lease No. 21845 having Coordinates of X = 2,431,793.00 and Y = 297,478.12; thence South 3,676.97 feet to a point having Coordinates of X = 2,431,793.00 and Y = 293,801.15; thence West 2,969.84 feet to the Northeast corner of State Lease No. 21649 having Coordinates of X = 2,428,823.16 and Y = 293,801.15; thence North 88 degrees 40 minutes 50 seconds West 1,206.93 feet along the North line of said State Lease No. 21649 to the Southeast corner of State Lease No. 21651, as amended having Coordinates of X = 2,427,616.55 and Y = 293,828.94; thence North 3,616.08 feet along the East line of said State Lease No. 21651, as amended, to its Northeast corner, said corner being a point on the boundary of State lease No. 21345, as amended, having Coordinates of X = 2,427,616.55 and Y = 297,445.02; thence North 89 degrees 25 minutes 00 seconds East 2,169.91 feet along the boundary of said State Lease No. 21345, as amended, to its most Easterly Southeast corner, said corner being the Southwest corner of said State Lease No. 21845, having Coordinates of X = 2,429,786.34 and Y = 297,467.11; thence along the Southern boundary of said State Lease No. 21845 the following courses: North 89 degrees 25 minutes 01 seconds East 1,081.64 feet to a point having Coordinates of X = 2,430,867.93 and Y = 597,478.12, and East 925.07 feet to the point of beginning, (This tract includes only waterbottoms claimed and owned by the state and specifically excludes any land which the state may claim or own and to which the mineral rights are vested in the state), containing approximately **192 acres**, all as more particularly outlined on a plat on file in the Office of Mineral Resources, Department of Natural Resources. All bearings, distances and coordinates are based on Louisiana Coordinate System of 1927, (North or South Zone), where applicable.

NOTE: The above description of the Tract nominated for lease has been provided and corrected, where required, exclusively by the nomination party. Any mineral lease selected from this Tract and awarded by the Louisiana State Mineral and Energy Board shall be without warranty of any kind, either express, implied, or statutory, including, but not limited to, the implied warranties of merchantability and fitness for a particular purpose. Should the mineral lease awarded by the Louisiana State Mineral and Energy Board be subsequently modified, cancelled or abrogated due to the existence of conflicting leases, operating agreements, private claims or other future obligations or conditions which may affect all or any portion of the leased Tract, it shall not relieve the Lessee of the obligation to pay any bonus due thereon to the Louisiana State Mineral and Energy Board, nor shall the Louisiana State Mineral and Energy Board be obligated to refund any consideration paid by the Lessor prior to such modification, cancellation, or abrogation, including, but not limited to, bonuses, rentals and royalties.

NOTE: The State of Louisiana does hereby reserve, and this lease shall be subject to, the imprescriptible right of surface use in the nature of a servitude in favor of the Department of Natural Resources, including its Offices and Commissions, for the sole purpose of implementing, constructing, servicing and maintaining approved coastal zone management and/or restoration projects. Utilization of any and all rights derived under this lease by the mineral lessee, its agents, successors or assigns, shall not interfere with nor hinder the reasonable surface use by the Department of Natural Resources, its Offices or Commissions, as herein above reserved.

Applicant: EMMA EXPLORATION

| Bidder | Cash Payment | Price/ Acre | Rental | Oil | Gas | Other |
|--------|-----------------|----------------|--------|-----|-----|-------|
| | | | | | | |
| | | | | | | |
| | | | | | | |
| | | | | | | |

Legend

19050003

Active_Leas

Counties

PLAQUEMINES

P.O.B.

SL 21845

JEFFERSON

BAYOU BARATARIA

SL 21345

SL 21651

SL 21649

BAYOU ST DENIS

BAYOU BARATARIA

N

0

1,000 Feet

TRACT 45136 - Lafourche and Terrebonne Parishes, Louisiana

All of the lands now or formerly constituting the beds and bottoms of all water bodies of every nature and description as to which title is vested in the State of Louisiana, together with all islands arising therein and other lands formed by accretion or by reliction, where allowed by law, excepting tax adjudicated lands, and not presently under mineral lease on May 8, 2019, situated in Lafourche and Terrebonne Parishes, Louisiana, and more particularly described as follows: Beginning at a point having Coordinates of X = 2,272,189.84 and Y = 295,955.43; thence East 16,580.00 feet to a point having Coordinates of X = 2,288,769.84 and Y = 295,955.43; thence South 16,283.29 feet to a point having Coordinates of X = 2,288,769.84 and Y = 279,672.14; thence West 8,249.88 feet to a point having Coordinates of X = 2,280,519.97 and Y = 279,672.14; thence North 5,119.24 feet to a point having Coordinates of X = 2,280,519.97 and Y = 284,791.38; thence South 89 degrees 59 minutes 03 seconds West 8,330.12 feet to a point having Coordinates of X = 2,272,189.84 and Y = 284,789.08; thence North 11,166.35 feet to the point of beginning, (This tract includes only waterbottoms claimed and owned by the state and specifically excludes any land which the state or Wildlife and Fisheries may claim or own and to which the mineral rights are vested in them), **LESS AND EXCEPT** any waterbottoms that are outside or are non-adjacent to the Pointe-Aux-Chenes Wildlife Management Area, containing approximately **276 acres**, all as more particularly outlined on a plat on file in the Office of Mineral Resources, Department of Natural Resources. All bearings, distances and coordinates are based on Louisiana Coordinate System of 1927, (North or South Zone), where applicable.

NOTE: The above description of the Tract nominated for lease has been provided and corrected, where required, exclusively by the nomination party. Any mineral lease selected from this Tract and awarded by the Louisiana State Mineral and Energy Board shall be without warranty of any kind, either express, implied, or statutory, including, but not limited to, the implied warranties of merchantability and fitness for a particular purpose. Should the mineral lease awarded by the Louisiana State Mineral and Energy Board be subsequently modified, cancelled or abrogated due to the existence of conflicting leases, operating agreements, private claims or other future obligations or conditions which may affect all or any portion of the leased Tract, it shall not relieve the Lessee of the obligation to pay any bonus due thereon to the Louisiana State Mineral and Energy Board, nor shall the Louisiana State Mineral and Energy Board be obligated to refund any consideration paid by the Lessor prior to such modification, cancellation, or abrogation, including, but not limited to, bonuses, rentals and royalties.

NOTE: This tract is located in the Pointe-Aux-Chenes Wildlife Management Area under the jurisdiction of the Louisiana Department of Wildlife and Fisheries which has promulgated rules and regulations for the protection of game and wildlife on the aforesaid Tract and, therefore, shall be subject to said rules and regulations, a copy of which may be obtained from the Department of Wildlife and Fisheries. In addition to the specific rules and

regulations applicable, the following shall apply regarding operations under this mineral lease:

- No activities will be allowed without written authorization from the Louisiana Department of Wildlife and Fisheries.
- Proposed projects will be evaluated on a case by case basis. Modifications to proposed project features, including, but not limited to, access routes, spoil placement, well sites, flowlines and appurtenant structures may be required by the Department of Wildlife and Fisheries.
- Compensatory mitigation will be required to offset unavoidable wetland impacts.
- Removal of all structures, facilities and equipment will be required within 120 days of abandonment unless otherwise agreed to in writing by the Department of Wildlife and Fisheries.
- No activities will be allowed during the hunting season unless approved by the Department.
- Compliance with the said WMA regulations will be required unless otherwise specified by the Department.
- Prior to submitting applications for wetland permits to Federal and State permitting agencies the leaseholder shall coordinate project details with the Department of Wildlife and Fisheries. Contact person for the Department will be Kyle Balkum at (225) 765-2819.
- Additionally, the Department will require a minimum bonus of \$350.00 per acre and a minimum royalty of 25%.

NOTE: The State of Louisiana does hereby reserve, and this lease shall be subject to, the imprescriptible right of surface use in the nature of a servitude in favor of the Department of Natural Resources, including its Offices and Commissions, for the sole purpose of implementing, constructing, servicing and maintaining approved coastal zone management and/or restoration projects. Utilization of any and all rights derived under this lease by the mineral lessee, its agents, successors or assigns, shall not interfere with nor hinder the reasonable surface use by the Department of Natural Resources, its Offices or Commissions, as herein above reserved.

Applicant: DELTA LAND EXPLORATION, INC

| Bidder | Cash Payment | Price/ Acre | Rental | Oil | Gas | Other |
|--------|-----------------|----------------|--------|-----|-----|-------|
| | | | | | | |
| | | | | | | |
| | | | | | | |
| | | | | | | |

Legend

19050012

Wildlife

Counties



LAFOURCHE

P.O.B.

T18S - R19E

T18S - R20E

POINTE AUX CHENES WMA

T19S - R20E

TERREBONNE

T19S - R19E

BAYOU POINTE AU CHIEN

GRAND BAYOU

TRACT 45137 - Lafourche and Terrebonne Parishes, Louisiana

All of the lands now or formerly constituting the beds and bottoms of all water bodies of every nature and description as to which title is vested in the State of Louisiana, together with all islands arising therein and other lands formed by accretion or by reliction, where allowed by law, excepting tax adjudicated lands, and not presently under mineral lease on May 8, 2019, situated in Lafourche and Terrebonne Parishes, Louisiana, and more particularly described as follows: Beginning at a point having Coordinates of X = 2,255,779.89 and Y = 289,914.11; thence East 16,409.95 feet to a point having Coordinates of X = 2,272,189.84 and Y = 289,914.11; thence South 15,979.50 feet to a point having Coordinates of X = 2,272,189.84 and Y = 273,934.61; thence West 16,409.95 feet to a point having Coordinates of X = 2,255,779.89 and Y = 273,934.61; thence North 15,979.50 feet to the point of beginning, (This tract includes only waterbottoms claimed and owned by the state and specifically excludes any land which the state or Wildlife and Fisheries may claim or own and to which the mineral rights are vested in them), **LESS AND EXCEPT** any waterbottoms that are outside or are non-adjacent to the Pointe-Aux-Chenes Wildlife Management Area, **LESS AND EXCEPT** any right, title, and interest in lands owned by and not under lease from the State of Louisiana, on behalf of the Lafourche and Terrebonne Parish School Boards, situated in Section 16, Township 19 South, Range 19 East, Lafourche and Terrebonne Parishes, Louisiana, contained within the above described tract, containing approximately **11 acres**, all as more particularly outlined on a plat on file in the Office of Mineral Resources, Department of Natural Resources. All bearings, distances and coordinates are based on Louisiana Coordinate System of 1927, (North or South Zone), where applicable.

NOTE: The above description of the Tract nominated for lease has been provided and corrected, where required, exclusively by the nomination party. Any mineral lease selected from this Tract and awarded by the Louisiana State Mineral and Energy Board shall be without warranty of any kind, either express, implied, or statutory, including, but not limited to, the implied warranties of merchantability and fitness for a particular purpose. Should the mineral lease awarded by the Louisiana State Mineral and Energy Board be subsequently modified, cancelled or abrogated due to the existence of conflicting leases, operating agreements, private claims or other future obligations or conditions which may affect all or any portion of the leased Tract, it shall not relieve the Lessee of the obligation to pay any bonus due thereon to the Louisiana State Mineral and Energy Board, nor shall the Louisiana State Mineral and Energy Board be obligated to refund any consideration paid by the Lessor prior to such modification, cancellation, or abrogation, including, but not limited to, bonuses, rentals and royalties.

NOTE: This tract is located in the Pointe-Aux-Chenes Wildlife Management Area under the jurisdiction of the Louisiana Department of Wildlife and Fisheries which has promulgated rules and regulations for the protection of game and wildlife on the aforesaid Tract and, therefore, shall be subject to said rules and regulations, a copy of which may be obtained from the Department of Wildlife and Fisheries. In addition to the specific rules and

regulations applicable, the following shall apply regarding operations under this mineral lease:

- No activities will be allowed without written authorization from the Louisiana Department of Wildlife and Fisheries.
- Proposed projects will be evaluated on a case by case basis. Modifications to proposed project features, including, but not limited to, access routes, spoil placement, well sites, flowlines and appurtenant structures may be required by the Department of Wildlife and Fisheries.
- Compensatory mitigation will be required to offset unavoidable wetland impacts.
- Removal of all structures, facilities and equipment will be required within 120 days of abandonment unless otherwise agreed to in writing by the Department of Wildlife and Fisheries.
- No activities will be allowed during the hunting season unless approved by the Department.
- Compliance with the said WMA regulations will be required unless otherwise specified by the Department.
- Prior to submitting applications for wetland permits to Federal and State permitting agencies the leaseholder shall coordinate project details with the Department of Wildlife and Fisheries. Contact person for the Department will be Kyle Balkum at (225) 765-2819.
- Additionally, the Department will require a minimum bonus of \$350.00 per acre and a minimum royalty of 25%.

NOTE: The State of Louisiana does hereby reserve, and this lease shall be subject to, the imprescriptible right of surface use in the nature of a servitude in favor of the Department of Natural Resources, including its Offices and Commissions, for the sole purpose of implementing, constructing, servicing and maintaining approved coastal zone management and/or restoration projects. Utilization of any and all rights derived under this lease by the mineral lessee, its agents, successors or assigns, shall not interfere with nor hinder the reasonable surface use by the Department of Natural Resources, its Offices or Commissions, as herein above reserved.

Applicant: DELTA LAND EXPLORATION, INC.

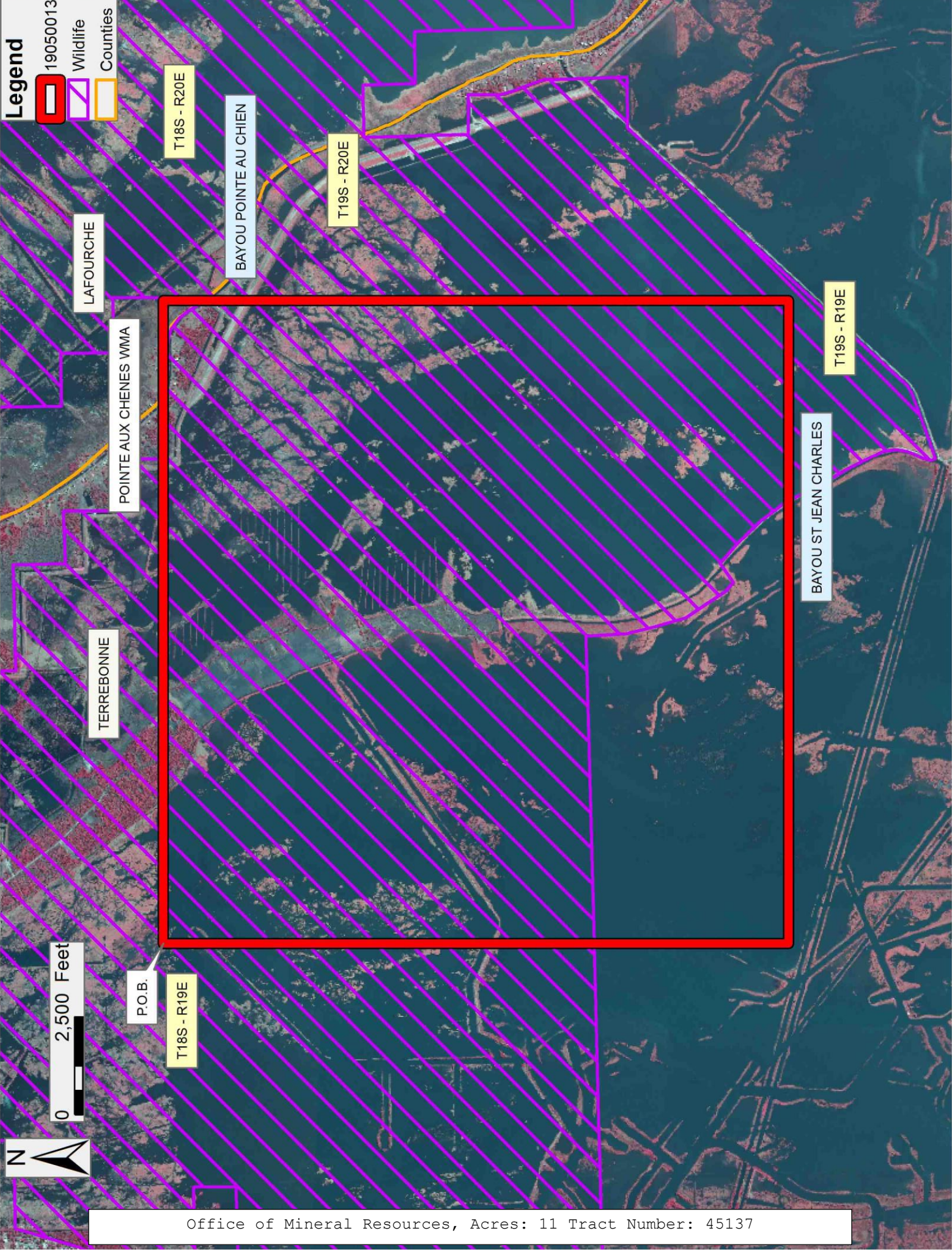
| Bidder | Cash Payment | Price/ Acre | Rental | Oil | Gas | Other |
|--------|-----------------|----------------|--------|-----|-----|-------|
| | | | | | | |
| | | | | | | |
| | | | | | | |
| | | | | | | |

Legend

19050013

Wildlife

Counties



TRACT 45138 - Lafourche and Terrebonne Parishes, Louisiana

All of the lands now or formerly constituting the beds and bottoms of all water bodies of every nature and description as to which title is vested in the State of Louisiana, together with all islands arising therein and other lands formed by accretion or by reliction, where allowed by law, excepting tax adjudicated lands, and not presently under mineral lease on May 8, 2019, situated in Lafourche and Terrebonne Parishes, Louisiana, and more particularly described as follows: Beginning at a point having Coordinates of X = 2,272,189.84 and Y = 284,789.08; thence North 89 degrees 59 minutes 03 seconds East 8,330.12 feet to a point having Coordinates of X = 2,280,519.97 and Y = 284,791.38; thence South 5,119.24 feet to a point having Coordinates of X = 2,280,519.97 and Y = 279,672.14; thence East 8,249.88 feet to a point having Coordinates of X = 2,288,769.84 and Y = 279,672.14; thence South 10,697.31 feet to a point having Coordinates of X = 2,288,769.84 and Y = 268,974.83; thence West 16,580.00 feet to a point having Coordinates of X = 2,272,189.84 and Y = 268,974.83; thence North 15,814.24 feet to the point of beginning, (This tract includes only waterbottoms claimed and owned by the state and specifically excludes any land which the state or Wildlife and Fisheries may claim or own and to which the mineral rights are vested in them), **LESS AND EXCEPT** any waterbottoms that lie within or are adjacent to the Pointe-Aux-Chenes Wildlife Management Area and **LESS AND EXCEPT** any right, title, and interest in lands owned by and not under lease from the State of Louisiana, on behalf of the Lafourche and Terrebonne Parish School Boards, situated in Section 16, Township 19 South, Range 20 East, Lafourche and Terrebonne Parishes, Louisiana, contained within the above described tract, containing approximately **85 acres**, all as more particularly outlined on a plat on file in the Office of Mineral Resources, Department of Natural Resources. All bearings, distances and coordinates are based on Louisiana Coordinate System of 1927, (North or South Zone), where applicable.

NOTE: The above description of the Tract nominated for lease has been provided and corrected, where required, exclusively by the nomination party. Any mineral lease selected from this Tract and awarded by the Louisiana State Mineral and Energy Board shall be without warranty of any kind, either express, implied, or statutory, including, but not limited to, the implied warranties of merchantability and fitness for a particular purpose. Should the mineral lease awarded by the Louisiana State Mineral and Energy Board be subsequently modified, cancelled or abrogated due to the existence of conflicting leases, operating agreements, private claims or other future obligations or conditions which may affect all or any portion of the leased Tract, it shall not relieve the Lessee of the obligation to pay any bonus due thereon to the Louisiana State Mineral and Energy Board, nor shall the Louisiana State Mineral and Energy Board be obligated to refund any consideration paid by the Lessor prior to such modification, cancellation, or abrogation, including, but not limited to, bonuses, rentals and royalties.

NOTE: The State of Louisiana does hereby reserve, and this lease shall be subject to, the imprescriptible right of surface use in the nature of a servitude in favor of the Department of Natural Resources, including its

Offices and Commissions, for the sole purpose of implementing, constructing, servicing and maintaining approved coastal zone management and/or restoration projects. Utilization of any and all rights derived under this lease by the mineral lessee, its agents, successors or assigns, shall not interfere with nor hinder the reasonable surface use by the Department of Natural Resources, its Offices or Commissions, as herein above reserved.

Applicant: DELTA LANDS EXPLORATION, INC.

| Bidder | Cash Payment | Price/ Acre | Rental | Oil | Gas | Other |
|--------|-----------------|----------------|--------|-----|-----|-------|
| | | | | | | |
| | | | | | | |
| | | | | | | |
| | | | | | | |

Legend

- 19050011
- Wildlife
- Counties

