

TRACT 44727 - Plaquemines Parish, Louisiana

All of the lands now or formerly constituting the beds and bottoms of all water bodies of every nature and description as to which title is vested in the State of Louisiana, together with all islands arising therein and other lands formed by accretion or by reliction, where allowed by law, excepting tax adjudicated lands, and not presently under mineral lease on May 10, 2017, situated in Plaquemines Parish, Louisiana, and more particularly described as follows: Beginning at a point having Coordinates of X = 2,478,344.64 and Y = 240,662.94; thence North 9,240.00 feet to a point having Coordinates of X = 2,478,344.64 and Y = 249,902.94; thence East 13,079.91 feet to a point having Coordinates of X = 2,491,424.54 and Y = 249,902.94; thence South approximately 9,069 feet to the Northwest corner of Tract 1 of State Lease No. 1753, as amended; thence South 89 degrees 15 minutes 00 seconds West approximately 13,081 feet to the point of beginning, containing approximately **2,295 acres**, all as more particularly outlined on a plat on file in the Office of Mineral Resources, Department of Natural Resources. All bearings, distances and coordinates are based on Louisiana Coordinate System of 1927, (North or South Zone), where applicable.

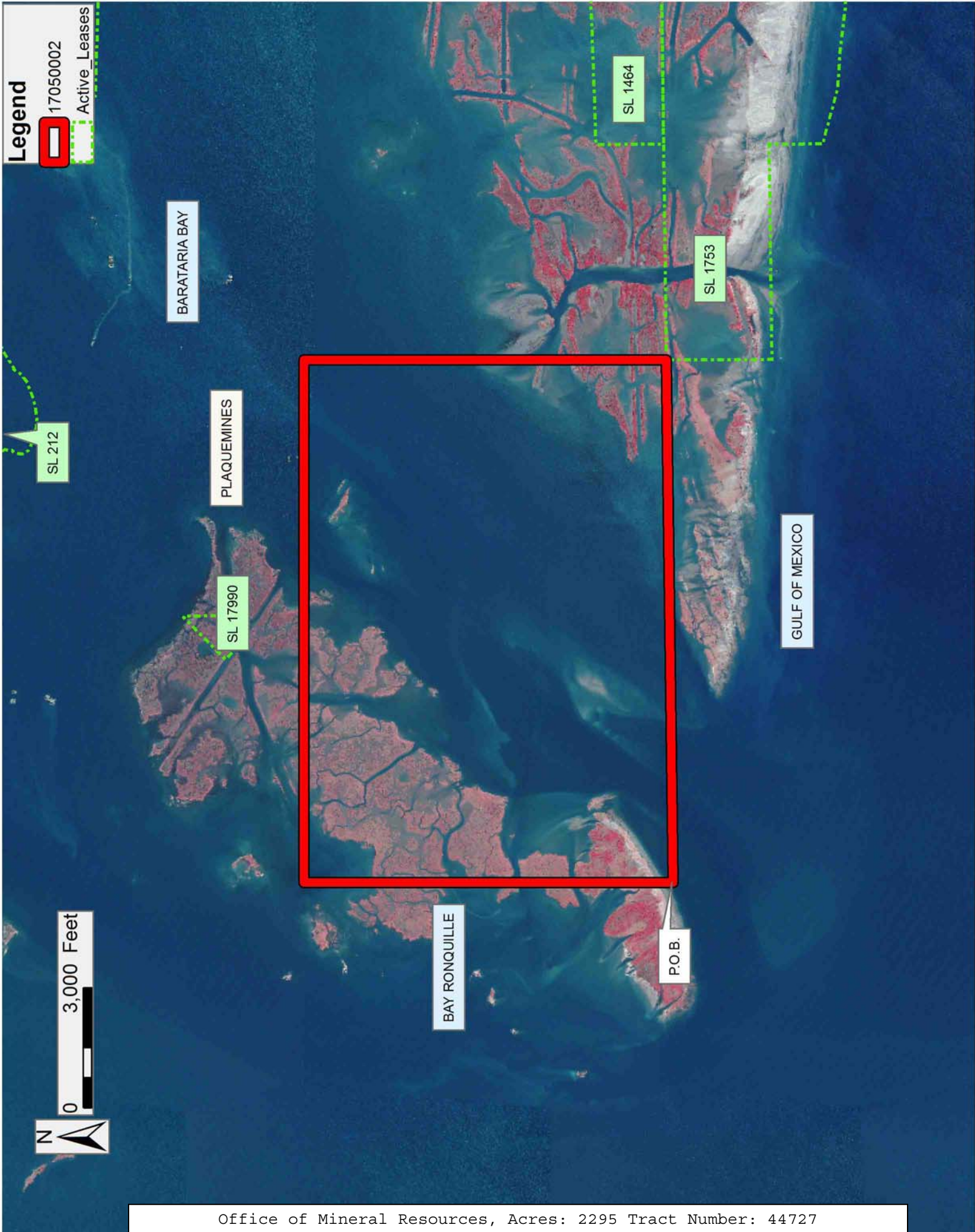
NOTE: The above description of the Tract nominated for the purpose of acquiring a mineral lease or a geophysical agreement has been provided and corrected, where required, exclusively by the nominating party. Any mineral lease or geophysical agreement selected from this Tract and awarded by the Louisiana State Mineral and Energy Board shall be without warranty of any kind, either express, implied or statutory including, but not limited to, title or the implied warranties of merchantability and fitness for a particular purpose.

An error or omission in the nominating party's Tract description may require that a State mineral lease or geophysical agreement be modified, canceled or abrogated due to the existence of conflicting leases, operating agreements, private claims or other future obligations or conditions within the Tract described. In such case, however, the Louisiana State Mineral and Energy Board shall not be obligated to refund any consideration paid by the Lessee prior to such modification, cancellation or abrogation including, but not limited to, bonuses, rentals and royalties.

NOTE: The State of Louisiana does hereby reserve, and this lease shall be subject to, the imprescriptible right of surface use in the nature of a servitude in favor of the Department of Natural Resources, including its Offices and Commissions, for the sole purpose of implementing, constructing, servicing and maintaining approved coastal zone management and/or restoration projects. Utilization of any and all rights derived under this lease by the mineral lessee, its agents, successors or assigns, shall not interfere with nor hinder the reasonable surface use by the Department of Natural Resources, its Offices or Commissions, as herein above reserved.

Applicant: WRIGHT ENERGY PARTNERS

Bidder	Cash Payment	Price/Acre	Rental	Oil	Gas	Other



TRACT 44728 - Plaquemines Parish, Louisiana

All of the lands now or formerly constituting the beds and bottoms of all water bodies of every nature and description as to which title is vested in the State of Louisiana, together with all islands arising therein and other lands formed by accretion or by reliction, where allowed by law, excepting tax adjudicated lands, and not presently under mineral lease on May 10, 2017, situated in Plaquemines Parish, Louisiana, and more particularly described as follows: Beginning at a point having Coordinates of X = 2,491,424.54 and Y = 247,978.46; thence East 14,521.72 feet to a point having Coordinates of X = 2,505,946.26 and Y = 247,978.46; thence South 2,313.78 feet to a point on the Northern boundary of Tract 1 of State Lease No. 1753, as amended, having Coordinates of X = 2,505,946.26 and Y = 245,664.68; thence South 89 degrees 15 minutes 00 seconds West 2,335.04 feet to its Northwest corner, said corner also being the Northeast corner of Tract 1 of State Lease No. 1464, as amended, having Coordinates of X = 2,503,611.42 and Y = 245,634.11; thence along the boundary of said Tract 1 of State Lease No. 1464, as amended, the following courses: South 89 degrees 15 minutes 00 seconds West 1,398.48 feet, South 00 degrees 04 minutes 57 minutes East 2,826.66, South 87 degrees 56 minutes 35 seconds West 5,401.07 feet, and South 00 degrees 07 minutes 42 seconds East 1,690.44 feet to its Southwest corner, said corner also being a point on Northern boundary of said Tract 1 of State Lease No. 1753, as amended, having Coordinates of X = 2,496,823.19 and Y = 240,904.84; thence South 89 degrees 15 minutes 00 seconds West approximately 5,399 feet along the Northern boundary of said Tract 1 of State Lease No. 1753, as amended, to its Southernmost Northwest corner; thence North 7,144.29 feet to the point of beginning, containing approximately **1,231 acres**, all as more particularly outlined on a plat on file in the Office of Mineral Resources, Department of Natural Resources. All bearings, distances and coordinates are based on Louisiana Coordinate System of 1927, (North or South Zone), where applicable.

NOTE: The above description of the Tract nominated for the purpose of acquiring a mineral lease or a geophysical agreement has been provided and corrected, where required, exclusively by the nominating party. Any mineral lease or geophysical agreement selected from this Tract and awarded by the Louisiana State Mineral and Energy Board shall be without warranty of any kind, either express, implied or statutory including, but not limited to, title or the implied warranties of merchantability and fitness for a particular purpose.

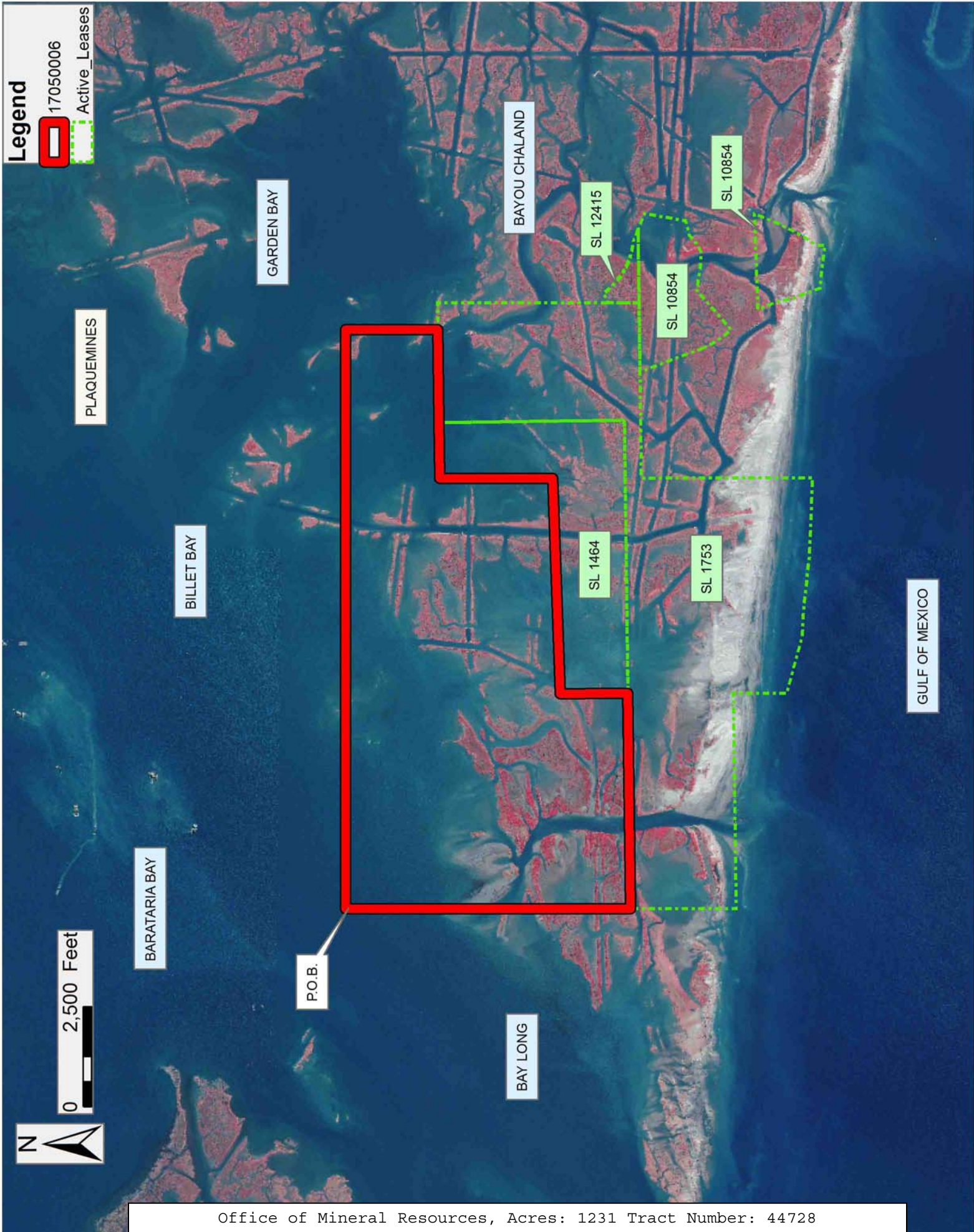
An error or omission in the nominating party's Tract description may require that a State mineral lease or geophysical agreement be modified, canceled or abrogated due to the existence of conflicting leases, operating agreements, private claims or other future obligations or conditions within the Tract described. In such case, however, the Louisiana State Mineral and Energy Board shall not be obligated to refund any consideration paid by the Lessee prior to such modification,

cancellation or abrogation including, but not limited to, bonuses, rentals and royalties.

NOTE: The State of Louisiana does hereby reserve, and this lease shall be subject to, the imprescriptible right of surface use in the nature of a servitude in favor of the Department of Natural Resources, including its Offices and Commissions, for the sole purpose of implementing, constructing, servicing and maintaining approved coastal zone management and/or restoration projects. Utilization of any and all rights derived under this lease by the mineral lessee, its agents, successors or assigns, shall not interfere with nor hinder the reasonable surface use by the Department of Natural Resources, its Offices or Commissions, as herein above reserved.

Applicant: WRIGHT ENERGY PARTNERS

Bidder	Cash Payment	Price/Acre	Rental	Oil	Gas	Other



TRACT 44729 - Plaquemines Parish, Louisiana

All of the lands now or formerly constituting the beds and bottoms of all water bodies of every nature and description as to which title is vested in the State of Louisiana, together with all islands arising therein and other lands formed by accretion or by reliction, where allowed by law, excepting tax adjudicated lands, and not presently under mineral lease on May 10, 2017, situated in Plaquemines Parish, Louisiana, and more particularly described as follows: Beginning at a point having Coordinates of X = 2,502,226.73 and Y = 234,282.32; thence West 18,480.00 feet to a point having Coordinates of X = 2,483,746.73 and Y = 234,282.32; thence North 6,451.34 feet to a point having Coordinates of X = 2,483,746.73 and Y = 240,733.66; thence North 89 degrees 15 minutes 00 seconds East approximately 7,678 feet to the Northwest corner of Tract 1 of State Lease No. 1753, as amended; thence along the boundary of said Tract 1 of State Lease No. 1753, as amended, the following courses: South 00 degrees 10 minutes 21 seconds East approximately 2,640 feet, North 89 degrees 15 minutes 00 seconds East 5,397.01 feet, South 00 degrees 07 minutes 36 seconds East 1,341.08 feet, South 74 degrees 48 minutes 30 seconds East 1,457.08 feet, South 86 degrees 43 minutes 50 seconds East 802.15 feet, South 83 degrees 22 minutes 50 seconds East 1,196.34 feet, and South 87 degrees 49 minutes 30 seconds East 2,000.80 feet to its Southeast corner, having Coordinates of X = 2,502,226.73 and Y = 236,282.32; thence South 2,000.00 feet to the point of beginning, containing approximately **1,771 acres**, all as more particularly outlined on a plat on file in the Office of Mineral Resources, Department of Natural Resources. All bearings, distances and coordinates are based on Louisiana Coordinate System of 1927, (North or South Zone), where applicable.

NOTE: The above description of the Tract nominated for the purpose of acquiring a mineral lease or a geophysical agreement has been provided and corrected, where required, exclusively by the nominating party. Any mineral lease or geophysical agreement selected from this Tract and awarded by the Louisiana State Mineral and Energy Board shall be without warranty of any kind, either express, implied or statutory including, but not limited to, title or the implied warranties of merchantability and fitness for a particular purpose.

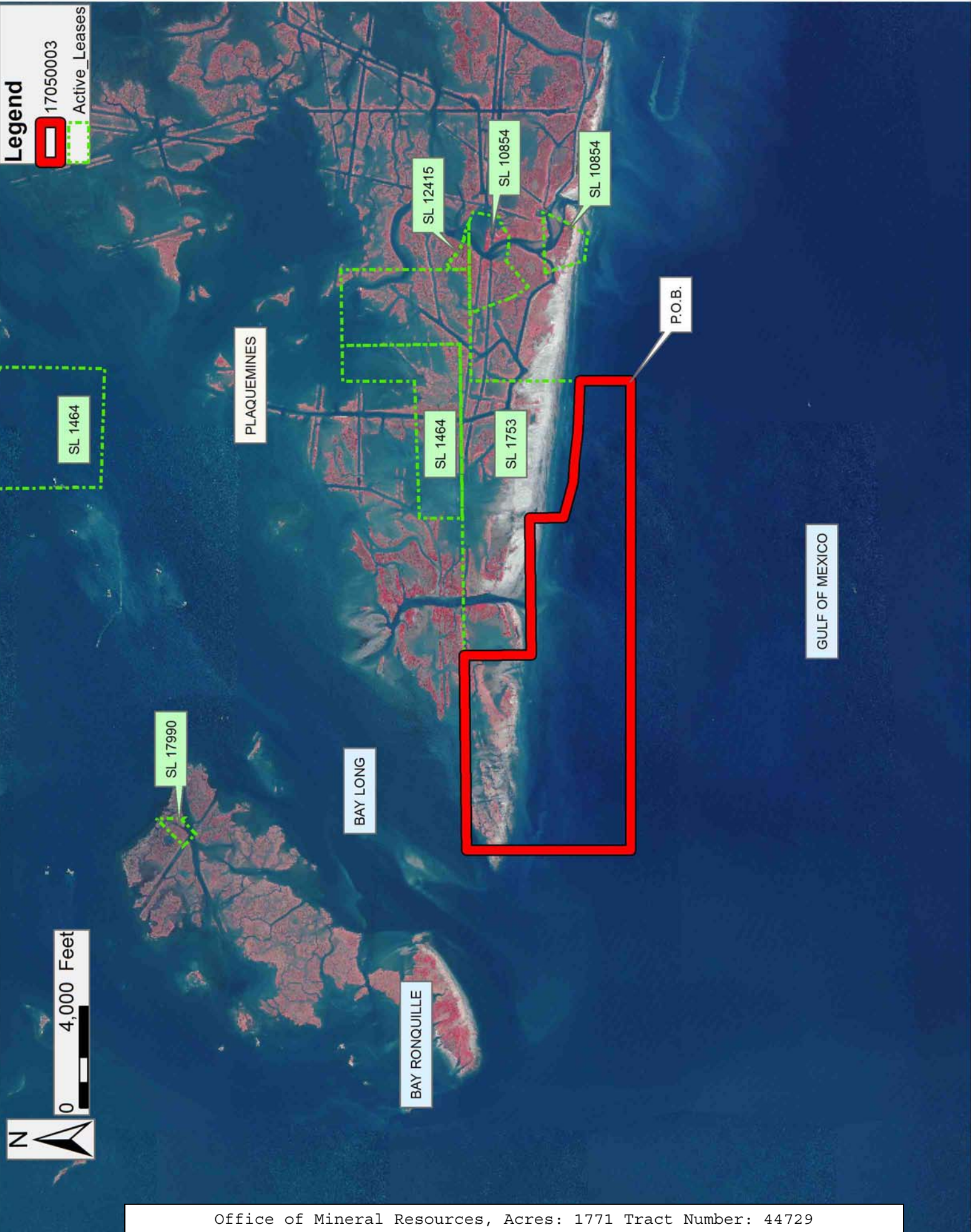
An error or omission in the nominating party's Tract description may require that a State mineral lease or geophysical agreement be modified, canceled or abrogated due to the existence of conflicting leases, operating agreements, private claims or other future obligations or conditions within the Tract described. In such case, however, the Louisiana State Mineral and Energy Board shall not be obligated to refund any consideration paid by the Lessee prior to such modification, cancellation or abrogation including, but not limited to, bonuses, rentals and royalties.

NOTE: The State of Louisiana does hereby reserve, and this lease shall be subject to, the imprescriptible right of surface use in the nature of a

servitude in favor of the Department of Natural Resources, including its Offices and Commissions, for the sole purpose of implementing, constructing, servicing and maintaining approved coastal zone management and/or restoration projects. Utilization of any and all rights derived under this lease by the mineral lessee, its agents, successors or assigns, shall not interfere with nor hinder the reasonable surface use by the Department of Natural Resources, its Offices or Commissions, as herein above reserved.

Applicant: WRIGHT ENERGY PARTNERS

Bidder	Cash Payment	Price/Acre	Rental	Oil	Gas	Other



TRACT 44730 - Plaquemines Parish, Louisiana

All of the lands now or formerly constituting the beds and bottoms of all water bodies of every nature and description as to which title is vested in the State of Louisiana, together with all islands arising therein and other lands formed by accretion or by reliction, where allowed by law, excepting tax adjudicated lands, and not presently under mineral lease on May 10, 2017, situated in Plaquemines Parish, Louisiana, and more particularly described as follows: Beginning at a point having Coordinates of X = 2,520,706.73 and Y = 242,948.80; thence South 8,666.48 feet to a point having Coordinates of X = 2,520,706.73 and Y = 234,282.32; thence West approximately 7,947 feet to a point on the Eastern boundary of Tract 2 of Special Section 16, Township 21 South Range 27 East; thence along said Special Section 16 the following: Northeasterly, Northwesterly, and Southwesterly to a point of intersection with a line that bears South 89 degrees 54 minutes 29 seconds East and commences at a point having Coordinates of X = 2,502,226.73 and Y = 234,282.32; thence North 89 degrees 54 minutes 29 seconds West approximately 7,529 feet to a point having Coordinates of X = 2,502,226.73 and Y = 234,282.32; thence North 2,000.00 feet to the Southeast corner of Tract 1 of State Lease No. 1753, as amended, having Coordinates of X = 2,502,226.73 and Y = 236,282.32; thence along the boundary of said Tract 1 of State Lease No. 1753, as amended, the following courses: North 00 degrees 04 minutes 59 seconds West 1,226.79 feet to a point having Coordinates of X = 2,502,224.95 and Y = 237,509.12; North 00 degrees 05 minutes 00 seconds West 3,060.89 feet to a point having Coordinates of X = 2,502,220.83 and Y = 240,570.00, and North 89 degrees 15 minutes 00 seconds East 2,663.15 feet to the Northwest corner of Tract 1 of State Lease No. 10854, as amended, having Coordinates of X = 2,504,883.75 and Y = 240,604.86; thence along the boundary of said Tract 1 of State Lease No. 10854, as amended the following courses: along an arc having a radius of 52,752.28 feet, a center of X = 2,455,769.81 and Y = 221,353.29 to a point having Coordinates of X = 2,505,480.24 and Y = 239,007.66; thence along an arc having a radius of 3,072.55 feet, a center of X = 2,508,243.41 and Y = 240,351.32 to a point having Coordinates of X = 2,505,880.24 and Y = 238,387.66; thence along an arc having a radius of 2,723.56 feet, a center of X = 2,507,801.27 and Y = 240,318.31 to a point having Coordinates of X = 2,505,946.26 and Y = 238,324.13; thence North 49 degrees 00 minutes 00 seconds East 1,321.44 feet to a point to a point having Coordinates of X = 2,506,943.58 and Y = 239,191.07; thence along an arc having a radius of 504.23 feet, a center of X = 2,507,131.35 and Y = 239,659.03 to a point having Coordinates of X = 2,507,055.14 and Y = 239,160.60; thence South 81 degrees 18 minutes 05 seconds East 463.50 feet to a point to a point having Coordinates of X = 2,507,513.31 and Y = 239,090.50; thence along an arc having a radius of 3,725.00 feet, a center of X = 2,507,843.33 and Y = 242,800.85 to a point having Coordinates of X = 2,507,915.04 and Y = 239,076.54; thence along an arc having a radius of 2,047.76, a center of X = 2,506,902.75 and Y = 240,856.60 to a point having Coordinates of X = 2,508,313.27 and Y = 239,372.09; thence North 85 degrees 12 minutes 40 seconds East 68.68 feet; thence North 74 degrees 51 minutes 27 seconds East 86.73 feet; thence North 69 degrees 43 minutes 08

seconds East 70.91 feet; thence North 76 degrees 36 minutes 58 seconds East 76.84 feet; thence North 73 degrees 20 minutes 56 seconds East 75.76 feet to a point on the Operating Agreement No. 195, being the same boundary of the LW R RB SU created in Field Order 149-FF-2, having Coordinates of X = 2,508,678.13 and Y = 239,456.54; thence following the boundary of said Operating Agreement No. 195 the following courses: thence along the boundary of said Operating Agreement 195, as amended, the following courses: North 77 degrees 04 minutes 45 seconds East 62.79 feet; North 72 degrees 15 minutes 59 seconds East 68.19 feet; North 57 degrees 40 minutes 29 seconds East 86.33 feet; North 47 degrees 44 minutes 29 seconds East 71.57 feet; North 34 degrees 41 minutes 36 seconds East 117.77 feet; North 18 degrees 41 minutes 08 seconds East 51.80 feet; North 26 degrees 58 minutes 39 seconds East 45.37 feet; North 17 degrees 03 minutes 05 seconds East 51.18 feet; North 03 degrees 13 minutes 43 seconds West 62.13 feet; North 19 degrees 27 minutes 05 seconds West 66.61 feet; North 26 degrees 06 minutes 45 seconds West 59.13 feet; North 18 degrees 17 minutes 57 seconds West 36.90 feet; North 03 degrees 36 minutes 06 seconds West 32.21 feet; North 35 degrees 08 minutes 54 seconds East 33.86 feet; North 31 degrees 28 minutes 24 seconds East 54.37 feet; North 24 degrees 35 minutes 30 seconds East 60.55 feet; North 02 degrees 44 minutes 59 seconds East 55.29 feet; North 18 degrees 01 minutes 21 seconds West 60.60 feet; North 31 degrees 11 minutes 42 seconds West 51.62 feet; North 35 degrees 46 minutes 28 seconds West 81.15 feet; North 54 degrees 51 minutes 16 seconds West 67.68 feet; along an arc to the left having a radius of 2,047.76 feet and a center of X = 2,510,501.94 and Y = 239,179.72 to a point having Coordinates of X = 2,508,914.74 and Y = 240,473.61; and along an arc to the left having a radius of 24,979.99 feet and a center of X = 2,499,592.61 and Y = 217,298.24 to a Northeast corner of the Northernmost portion of said State Lease No. 10854 having Coordinates of X = 2,508,851.82 and Y = 240,498.82; thence along the Eastern boundary of said State Lease No. 10854, Tract 1, as amended, along an arc having a radius of 24,979.99 feet, a center of 2,499,590.56 and Y = 217,299.06 to a point on the boundary of State Lease No. 12415, having Coordinates of X = 2,508,120.25 and 240, 777.65; thence along the boundary of said State Lease No. 12415 following courses: along an arc to the right having a radius of 1,810.01 feet and a center of X = 2,508,312.58 and Y = 242,577.42 to a point having Coordinates of X = 2,506,845.25 and Y = 241,517.65 and South 60 degrees 22 minutes 08 seconds West 263.84 feet to a point on the boundary of State Lease No. 1753 having Coordinates of X = 2,506,615.90 and Y = 241,387.22; thence North North 00 degrees 02 minutes 12 seconds West 1,561.58 feet along the Eastern boundary of said Tract 1 of State Lease No. 1753, as amended, to a point having Coordinates of X = 2,506,614.90 and Y = 242,948.80; thence East 14,091.83 feet to the point of beginning, **LESS AND EXCEPT** in its entirety State Lease No. 10854, as amended, and Special Section 16, Township 21 South Range 27 East, Plaquemines Parish, Louisiana, more particularly described as follows: Beginning at a point being the point of beginning of above described tract having Coordinates of X = 2,520,706.73 and Y = 242,948.80; thence South 69 degrees 37 minutes 12 seconds West 15,217.29 feet to a point being the

point of beginning of said State Lease No. 10854 having Coordinates of X = 2,506,442.00 and Y = 237,649.43; thence North 87 degrees 56 minutes 29 seconds East approximately 1,178 feet to a point of intersection with said Special Section 16; thence along the boundary of said Special Section 16 the following courses: Northerly, Easterly, Southerly, Southeasterly, and Northerly to a point of intersection with said State Lease No. 10854; thence along the boundary of said State Lease No. 10854 the following: North 82 degrees 55 minutes 31 seconds West approximately 492 feet, North 87 degrees 39 minutes 34 seconds West 135.00 feet to a point having Coordinates of X = 2,506,981.11 and Y = 236,088.51, along an arc to the left having a radius of 22,151.71 feet and a center at X = 2,486,099.61 and Y = 225,695.19 to a point having Coordinates of X = 2,506,720.23 and Y = 236,787.66, along an arc to the left having a radius of 2,723.56 feet and a center at X = 2,504,025.37 and Y = 236,393.37 to its point of beginning, and **LESS AND EXCEPT** any portion of State Lease No. 12415, as amended, State Lease No. 10854, as amended, State Lease No. 1753, as amended, and Operating Agreement No. 195, that may lie within the above described tract, containing approximately **1,349 acres**, all as more particularly outlined on a plat on file in the Office of Mineral Resources, Department of Natural Resources. All bearings, distances and coordinates are based on Louisiana Coordinate System of 1927, (North or South Zone), where applicable.

NOTE: The above description of the Tract nominated for the purpose of acquiring a mineral lease or a geophysical agreement has been provided and corrected, where required, exclusively by the nominating party. Any mineral lease or geophysical agreement selected from this Tract and awarded by the Louisiana State Mineral and Energy Board shall be without warranty of any kind, either express, implied or statutory including, but not limited to, title or the implied warranties of merchantability and fitness for a particular purpose.

An error or omission in the nominating party's Tract description may require that a State mineral lease or geophysical agreement be modified, canceled or abrogated due to the existence of conflicting leases, operating agreements, private claims or other future obligations or conditions within the Tract described. In such case, however, the Louisiana State Mineral and Energy Board shall not be obligated to refund any consideration paid by the Lessee prior to such modification, cancellation or abrogation including, but not limited to, bonuses, rentals and royalties.

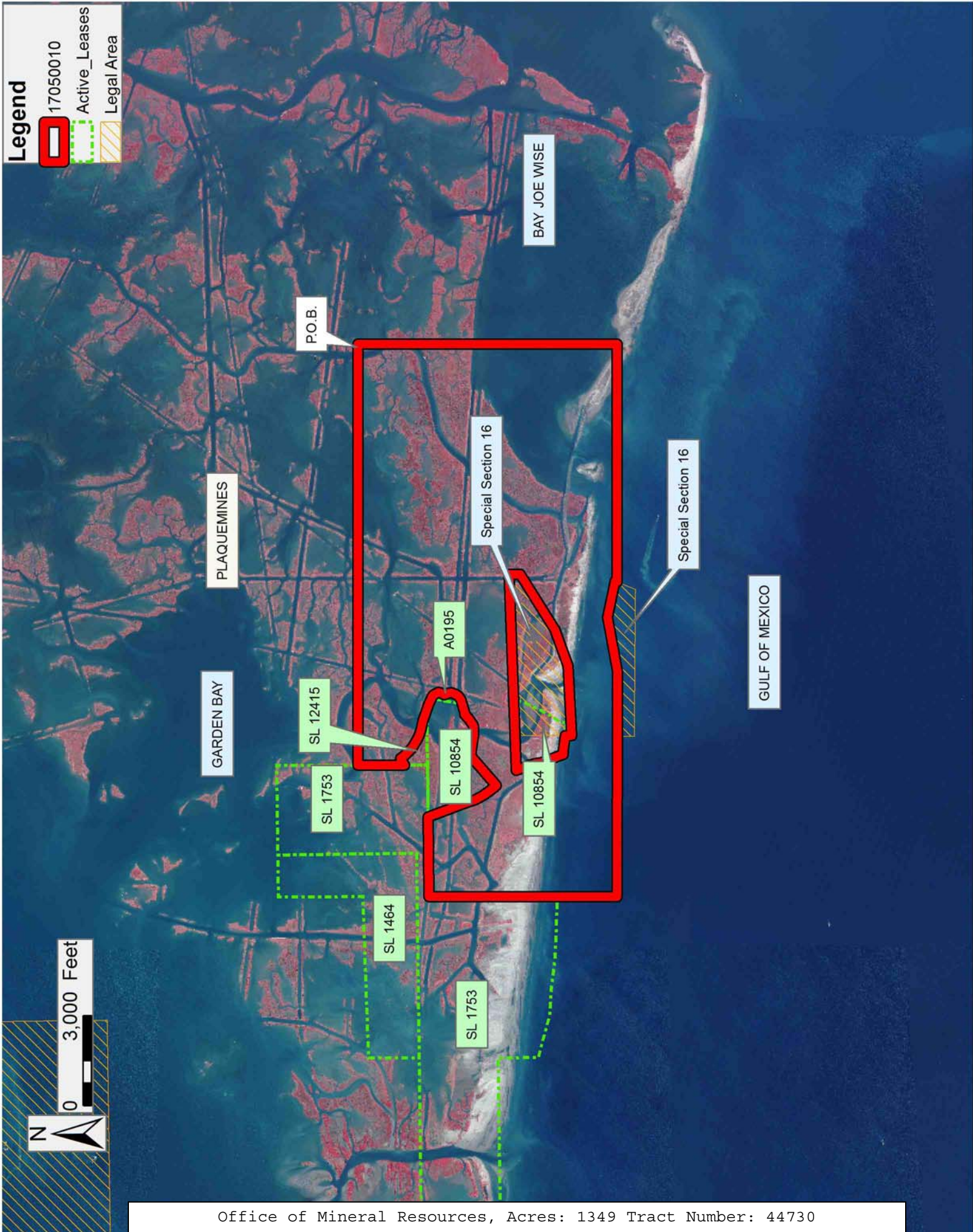
NOTE: The State of Louisiana does hereby reserve, and this lease shall be subject to, the imprescriptible right of surface use in the nature of a servitude in favor of the Department of Natural Resources, including its Offices and Commissions, for the sole purpose of implementing, constructing, servicing and maintaining approved coastal zone management and/or restoration projects. Utilization of any and all rights derived under this lease by the mineral lessee, its agents, successors or assigns,

shall not interfere with nor hinder the reasonable surface use by the Department of Natural Resources, its Offices or Commissions, as herein above reserved.

NOTE: It appears, according to our records, that a portion of this Tract is located within the restrictive safety fairway area as set out by the Corps of Engineers, U.S. Army and/or the restrictive anchorage area as set out by the U.S. Coast Guard.

Applicant: WRIGHT ENERGY PARTNERS

Bidder	Cash Payment	Price/Acre	Rental	Oil	Gas	Other



Legend

- 17050010
- Active_Leases
- Legal Area

GARDEN BAY
PLAQUEMINES

P.O.B.

BAY JOE WISE

GULF OF MEXICO

Special Section 16

Special Section 16

SL 12415

A0195

SL 1753

SL 10854

SL 10854

SL 1464

SL 1753

0 3,000 Feet

