

TRACT 44704 - Portion of Block 82, West Delta Area, Plaquemines Parish, Louisiana

The beds and bottoms of all water bodies belonging to the State of Louisiana located in Block 82, West Delta Area, together with any present lands formed by accretion to the shoreline or islands formed therein, located in Plaquemines Parish, Louisiana, owned by and not presently under mineral lease as of May 10, 2017, from the State of Louisiana, the geographical area of which is more fully described as follows: Beginning at a point on the West line of Block 82, West Delta Area, having Coordinates of X = 2,605,477.93 and Y = 113,414.00; thence East approximately 8,998 feet to a point on the boundary of State Lease No. 2565 having a Coordinate of Y = 113,414.00; thence Southwesterly along the boundaries of said State Lease No. 2565 and State Lease No. 2566 to a point and the South line of said Block 82 and State Lease No. 21642 having a Coordinate of Y = 102,992.10; thence West along the South line of said Block 82 and said State Lease No. 21642 approximately 1,988 feet to a point being the Northwest corner of said State Lease No. 21642 having a Coordinate of X = 2,611,030.99 and Y = 102,992.10; thence West 5,553.05 feet along the South line of said Block 82 to its Southwest corner having Coordinates of X = 2,605,477.94 and Y = 102,992.10; thence North 10,421.90 feet along the West line of said Block 82 to the point of beginning, **LESS AND EXCEPT** those portions of said State Lease No. 2565 and said State Lease No. 2566 that may lie within the above described tract containing approximately **2,077 acres**, all as more particularly outlined on a plat on file in the Office of Mineral Resources, Department of Natural Resources. All bearings, distances and coordinates are based on Louisiana Coordinate System of 1927, (North or South Zone).

NOTE: The above description of the Tract nominated for the purpose of acquiring a mineral lease or a geophysical agreement has been provided and corrected, where required, exclusively by the nominating party. Any mineral lease or geophysical agreement selected from this Tract and awarded by the Louisiana State Mineral and Energy Board shall be without warranty of any kind, either express, implied or statutory including, but not limited to, title or the implied warranties of merchantability and fitness for a particular purpose.

An error or omission in the nominating party's Tract description may require that a State mineral lease or geophysical agreement be modified, canceled or abrogated due to the existence of conflicting leases, operating agreements, private claims or other future obligations or conditions within the Tract described. In such case, however, the Louisiana State Mineral and Energy Board shall not be obligated to refund any consideration paid by the Lessee prior to such modification, cancellation or abrogation including, but not limited to, bonuses, rentals and royalties.

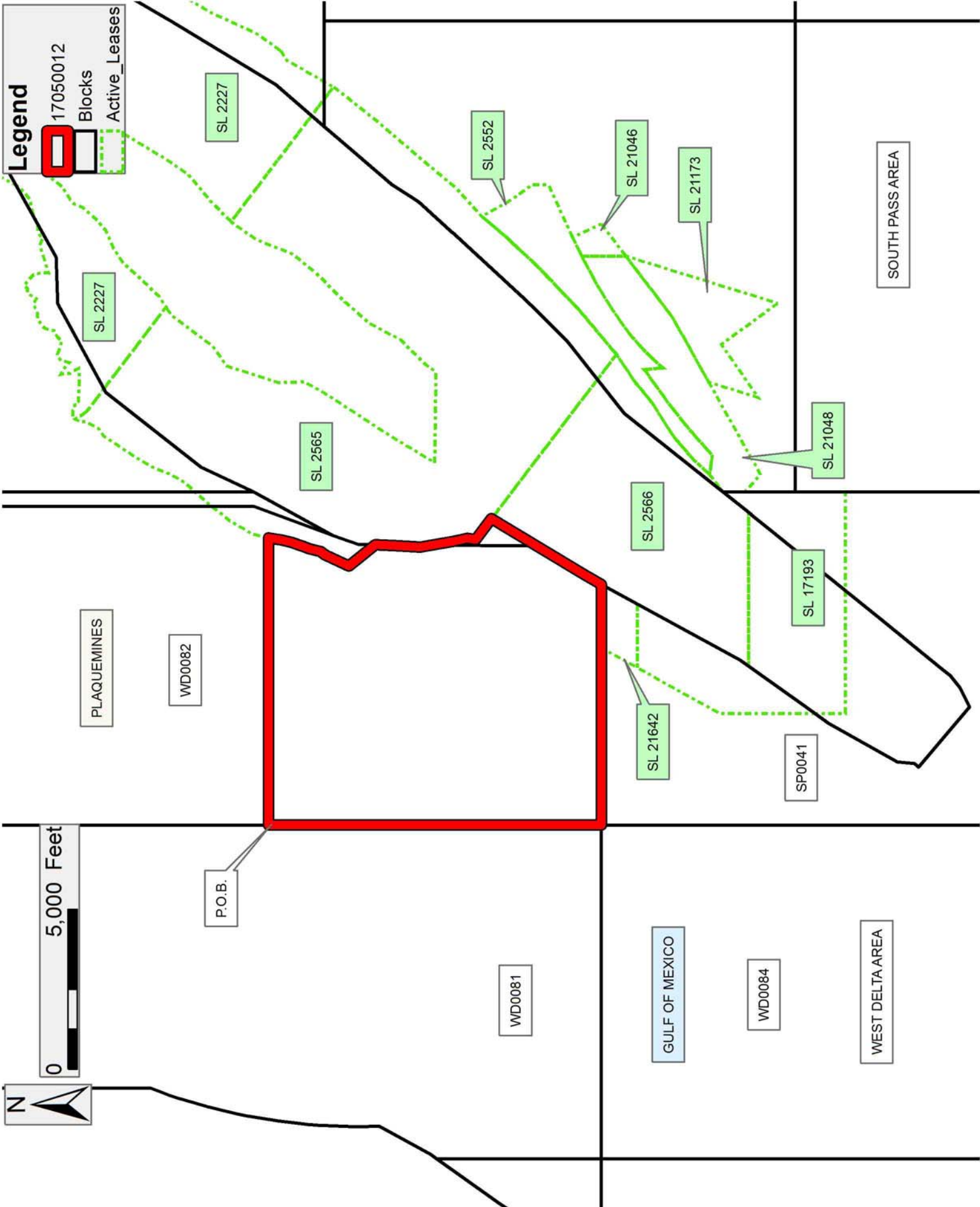
NOTE: The State of Louisiana does hereby reserve, and this lease shall be subject to, the imprescriptible right of surface use in the nature of a

servitude in favor of the Department of Natural Resources, including its Offices and Commissions, for the sole purpose of implementing, constructing, servicing and maintaining approved coastal zone management and/or restoration projects. Utilization of any and all rights derived under this lease by the mineral lessee, its agents, successors or assigns, shall not interfere with nor hinder the reasonable surface use by the Department of Natural Resources, its Offices or Commissions, as herein above reserved.

NOTE: It appears, according to our records, that a portion of this Tract is located within the restrictive safety fairway area as set out by the Corps of Engineers, U.S. Army and/or the restrictive anchorage area as set out by the U.S. Coast Guard.

Applicant: DELTA LANDS EXPLORATION, INC.

Bidder	Cash Payment	Price/Acre	Rental	Oil	Gas	Other



TRACT 44705 - Portion of Block 40, South Pass Area, Plaquemines Parish, Louisiana

The beds and bottoms of all water bodies belonging to the State of Louisiana located in Block 40, South Pass Area, together with any present lands formed by accretion to the shoreline or islands formed therein, located in Plaquemines Parish, Louisiana, owned by and not presently under mineral lease as of May 10, 2017, from the State of Louisiana, the geographical area of which is more fully described as follows: Beginning at the Northeast corner of Block 40, South Pass Area having Coordinates of X = 2,630,686.00 and Y = 111,666.00; thence South 14,757.98 feet along the East line of said Block 40 to its Southeast corner having Coordinates of X = 2,630,686.00 and Y = 96,908.02; thence West 14,758.00 feet along the South line of said Block 40 to its Southwest corner and a point on the Eastern boundary of State Lease No. 17193 having Coordinates of X = 2,615,928.00 and Y = 96,908.02; thence along the Eastern boundary of said State Lease No. 17193 and the West line of said Block 40 the following courses: North 1,574.98 feet to the Northernmost Southwest corner of State Lease No. 21048 having Coordinates of X = 2,615,928.00 and Y = 98,483.00; thence along the boundary of said State Lease No. 21048 the following courses and distances: South 47 degrees 35 minutes 51 seconds East 747.74 feet to a point having Coordinates of X = 2,616,458.00 and Y = 97,999.00, North 60 degrees 45 minutes 12 seconds East 3,319.70 feet to a point having Coordinates of X = 2,619,354.52 and Y = 99,620.91 and the Northwestern boundary of State Lease No. 21173; thence along the boundary of said State Lease No. 21173 the following courses: South 17 degrees 15 minutes 21 Seconds West 1,628.58 feet to a point having Coordinates of X = 2,618,871.42 and Y = 98,065.63, North 55 degrees 04 minutes 00 seconds East 2,031.65 feet to a point having Coordinates of X = 2,620,537.00 and Y = 99,229.00, South 36 degrees 06 minutes 22 seconds East 2,190.79 feet to a point having Coordinates of X = 2,621,828.00 and Y = 97,459.00, North 17 degrees 15 minutes 21 seconds East 4,985.90 feet to a point on its Northeast corner and the Southwest corner of State Lease No. 21046 having Coordinates of X = 2,623,307.00 and Y = 102,220.48; thence along the boundary of said State Lease No. 21046 the following courses and distances: North 52 degrees 43 minutes 19 seconds East 1,265.54 feet to a point having Coordinates of X = 2,624,314.00 and Y = 102,987.00 feet and North 25 degrees 00 minutes 36 seconds West approximately 996 feet to a point on the boundary of State Lease No. 2552, as amended; thence Northeasterly and Northwesterly along the boundary of said State Lease No. 2552 to a point on the boundary of State Lease No. 2565; thence Northeasterly along the boundary of said State Lease No. 2565 to a point on State Lease No. 2227; thence Northeasterly along said State Lease No. 2227 to a point on the North line of said Block 40 having a Coordinate of Y = 111,666.00; thence East approximately 1,919 feet along the North line of said Block 40 to the point of beginning, **LESS AND EXCEPT** those portions of said State Lease No. 2552, said State Lease No. 2565 and said State Lease No. 2227 that may lie within the above described tract containing approximately, containing approximately **2,296 acres**, all as more particularly outlined on a plat on file in the Office of Mineral

Resources, Department of Natural Resources. All bearings, distances and coordinates are based on Louisiana Coordinate System of 1927, (North or South Zone).

NOTE: The above description of the Tract nominated for the purpose of acquiring a mineral lease or a geophysical agreement has been provided and corrected, where required, exclusively by the nominating party. Any mineral lease or geophysical agreement selected from this Tract and awarded by the Louisiana State Mineral and Energy Board shall be without warranty of any kind, either express, implied or statutory including, but not limited to, title or the implied warranties of merchantability and fitness for a particular purpose.

An error or omission in the nominating party's Tract description may require that a State mineral lease or geophysical agreement be modified, canceled or abrogated due to the existence of conflicting leases, operating agreements, private claims or other future obligations or conditions within the Tract described. In such case, however, the Louisiana State Mineral and Energy Board shall not be obligated to refund any consideration paid by the Lessee prior to such modification, cancellation or abrogation including, but not limited to, bonuses, rentals and royalties.

NOTE: The State of Louisiana does hereby reserve, and this lease shall be subject to, the imprescriptible right of surface use in the nature of a servitude in favor of the Department of Natural Resources, including its Offices and Commissions, for the sole purpose of implementing, constructing, servicing and maintaining approved coastal zone management and/or restoration projects. Utilization of any and all rights derived under this lease by the mineral lessee, its agents, successors or assigns, shall not interfere with nor hinder the reasonable surface use by the Department of Natural Resources, its Offices or Commissions, as herein above reserved.

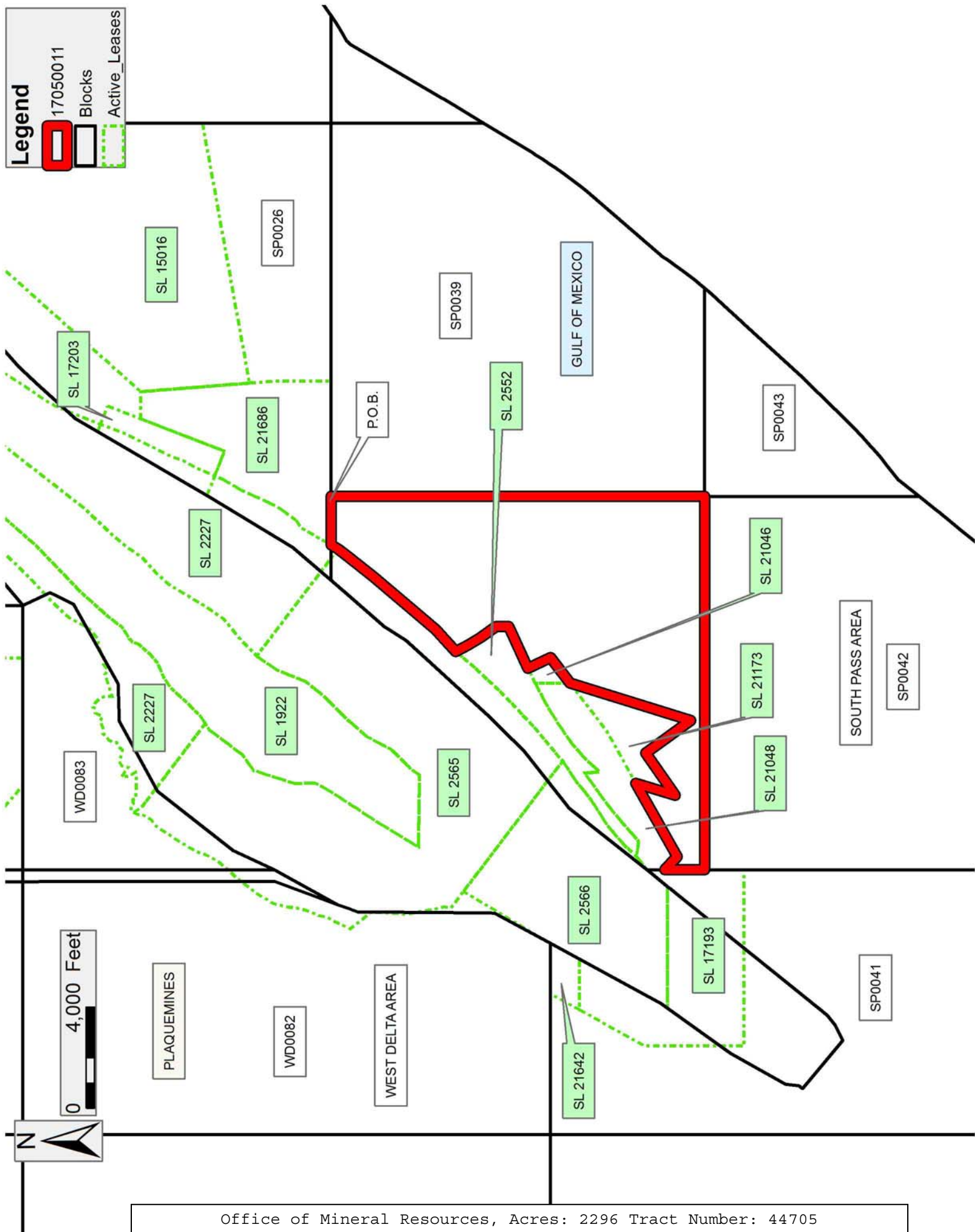
NOTE: It appears, according to our records, that a portion of this Tract is located within the restrictive safety fairway area as set out by the Corps of Engineers, U.S. Army and/or the restrictive anchorage area as set out by the U.S. Coast Guard.

Applicant: DELTA LANDS EXPLORATION, INC.

Bidder	Cash Payment	Price/Acre	Rental	Oil	Gas	Other

Legend

- 17050011
- Blocks
- Active_Leases



TRACT 44706 - Portion of Blocks 41, and 42, South Pass Area, Plaquemines Parish, Louisiana

The beds and bottoms of all water bodies belonging to the State of Louisiana located in Blocks 41, and 42, South Pass Area, together with any present lands formed by accretion to the shoreline or islands formed therein, located in Plaquemines Parish, Louisiana, owned by and not presently under mineral lease as of May 10, 2017, from the State of Louisiana, the geographical area of which is more fully described as follows: Beginning at a point on the Northwest corner of Block 41, South Pass Area, having Coordinates of X = 2,605,477.94 and Y = 102,992.10; thence East 5,553.05 feet along the North line of said Block 41 to a point being the Northwest corner of State Lease No. 21642 having a Coordinate of X = 2,611,030.99 and Y = 102,992.10; thence along the said State Lease No. 21642 the following courses: South 29 degrees 01 minutes 31 Seconds West 1,305.81 feet to a point on its Southwest corner and the Northwest corner of State Lease No. 17193 having Coordinates of X = 2,610,397.42 and Y = 101,850.29; thence along the boundary of said State Lease No. 17193 the following courses: South 29 degrees 01 minutes 30 seconds West 2,925.63 feet and South 2,985.42 feet to the Northwest corner of State Lease No. 17381 having Coordinates of X = 2,608,977.93 and Y = 96,306.68; thence along the boundary of said State Lease No. 17381 the following courses: South 35 degrees 37 minutes 33 seconds West 537.23 feet, South 29 degrees 15 minutes 25 seconds West 2,475.82 feet, South 05 degrees 52 minutes 11 seconds West 537.82 feet, South 39 degrees 10 minutes 25 seconds West 174.14 feet, South 49 degrees 50 minutes 18 seconds East 2,473.08 feet, North 63 degrees 14 minutes 45 seconds East 677.53 feet, North 51 degrees 20 minutes 25 seconds East 480.23 feet, North 38 degrees 58 minutes 39 seconds East 2,675.61 feet and North 38 degrees 56 minutes 35 seconds East 1,558.43 feet to the Northeast corner of said State Lease No. 17381, also being a point on the South Line of said State Lease No. 17193 having Coordinates of X = 2,612,822.55 and Y = 95,342.10; thence East 3,105.45 feet along the South Line of said State Lease No. 17193 to its Southeast corner, also being a point on the East line of said Block 41 having Coordinates of X = 2,615,928.00 and Y = 95,342.10; thence North 1,565.92 feet along the East Line of said Block 41 to its Northwest corner also being the Northeast corner of Block 42, South Pass Area, having Coordinates of X = 2,615,928.00 and Y = 96,908.02; thence East 3,689.50 along the North line of said Block 42 to a point having Coordinates of X = 2,619,617.50 and Y = 96,908.02; thence South 7,557.68 feet to a point having Coordinates of X = 2,619,617.50 and Y = 89,350.34; thence West 14,139.57 feet to a point on the West line of said Block 42 having Coordinates of X = 2,605,477.93 and Y = 89,350.34; thence North 13,641.76 feet to the point of beginning, containing approximately **2,480.67 acres**, all as more particularly outlined on a plat on file in the Office of Mineral Resources, Department of Natural Resources. All bearings, distances and coordinates are based on Louisiana Coordinate System of 1927, (North or South Zone).

NOTE: The above description of the Tract nominated for the purpose of acquiring a mineral lease or a geophysical agreement has been provided and corrected, where required, exclusively by the nominating party. Any mineral lease or geophysical agreement selected from this Tract and awarded by the Louisiana State Mineral and Energy Board shall be without warranty of any kind, either express, implied or statutory including, but not limited to, title or the implied warranties of merchantability and fitness for a particular purpose.

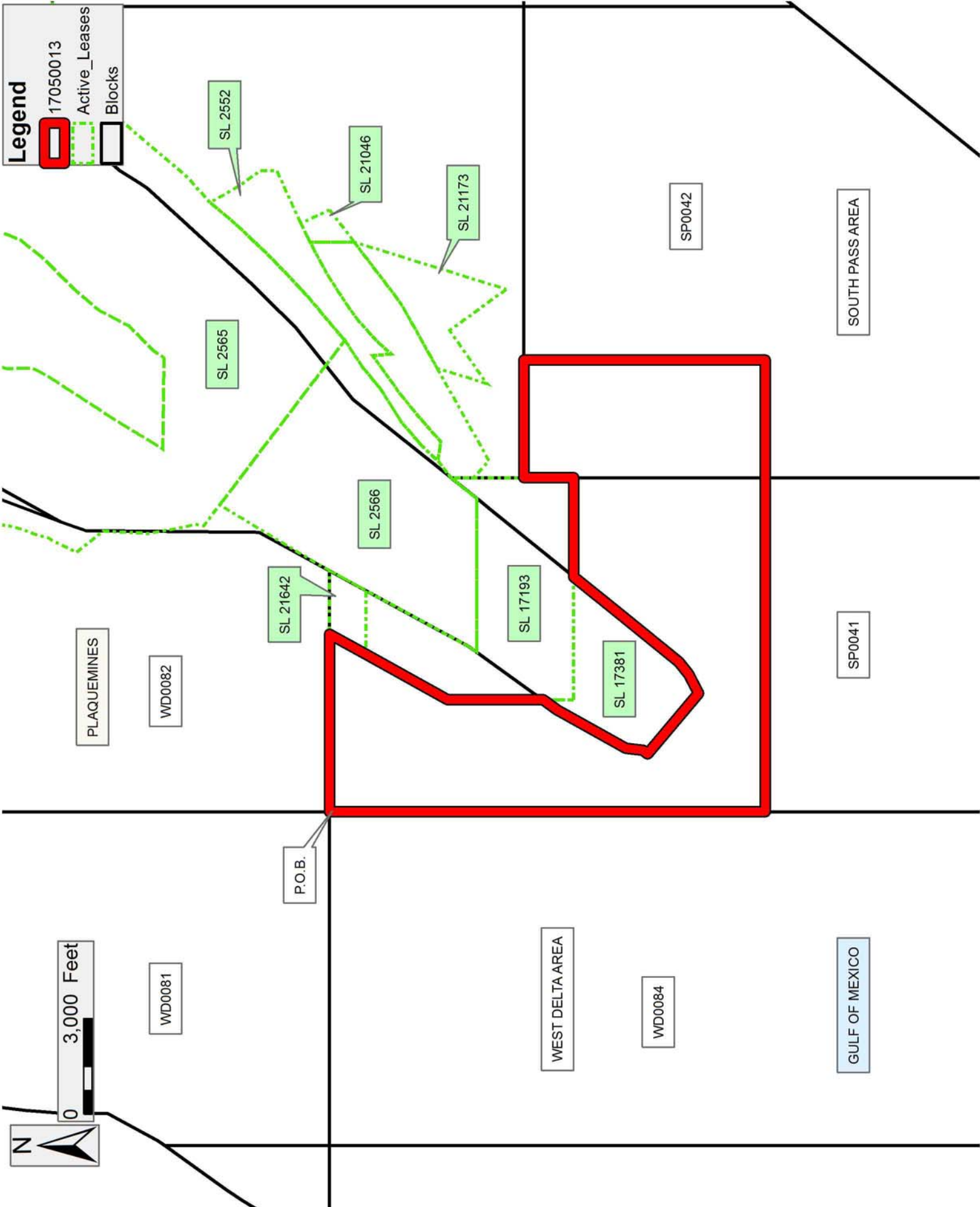
An error or omission in the nominating party's Tract description may require that a State mineral lease or geophysical agreement be modified, canceled or abrogated due to the existence of conflicting leases, operating agreements, private claims or other future obligations or conditions within the Tract described. In such case, however, the Louisiana State Mineral and Energy Board shall not be obligated to refund any consideration paid by the Lessee prior to such modification, cancellation or abrogation including, but not limited to, bonuses, rentals and royalties.

NOTE: The State of Louisiana does hereby reserve, and this lease shall be subject to, the imprescriptible right of surface use in the nature of a servitude in favor of the Department of Natural Resources, including its Offices and Commissions, for the sole purpose of implementing, constructing, servicing and maintaining approved coastal zone management and/or restoration projects. Utilization of any and all rights derived under this lease by the mineral lessee, its agents, successors or assigns, shall not interfere with nor hinder the reasonable surface use by the Department of Natural Resources, its Offices or Commissions, as herein above reserved.

NOTE: It appears, according to our records, that a portion of this Tract is located within the restrictive safety fairway area as set out by the Corps of Engineers, U.S. Army and/or the restrictive anchorage area as set out by the U.S. Coast Guard.

Applicant: DELTA LANDS EXPLORATION, INC.

Bidder	Cash Payment	Price/Acre	Rental	Oil	Gas	Other



Legend

17050013
Active_Leases
Blocks

PLAQUEMINES

WD0082

WD0081

WEST DELTA AREA

WD0084

GULF OF MEXICO

SL 2552

SL 21046

SL 21173

SL 2565

SL 2566

SL 21642

SL 17193

SL 17381

SP0042

SOUTH PASS AREA

SP0041

P.O.B.