

TRACT 44557 - De Soto Parish, Louisiana

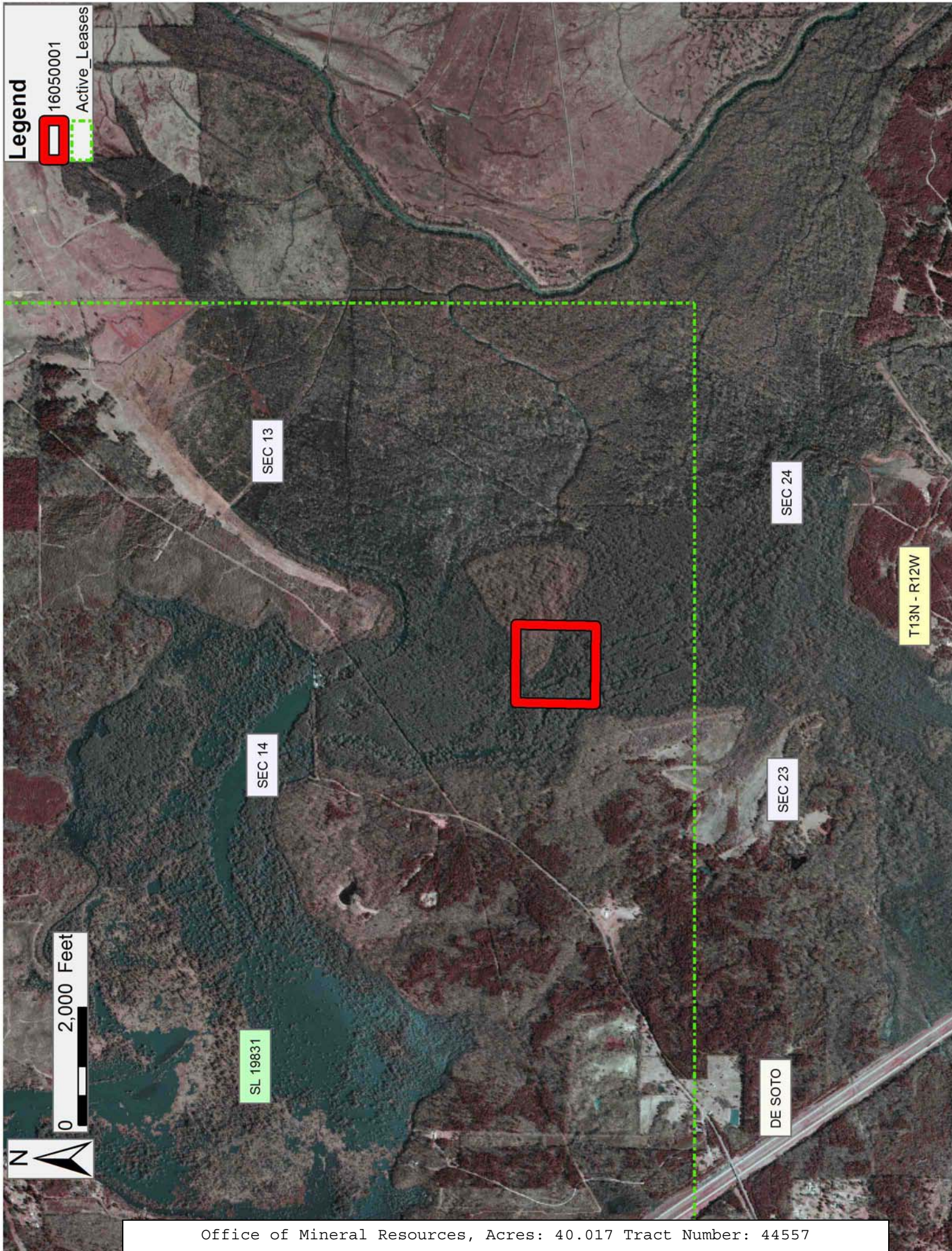
All lands, including lands now or formerly constituting the beds and bottoms of all water bodies of every nature and description, owned by and not presently under mineral lease as of May 11, 2016 from the State of Louisiana, situated in De Soto Parish, Louisiana, and being more fully described as follows: Dried bed of lake, located in Northeast Quarter (NE/4) of the Northeast Quarter (NE/4) of Section 23, Township 13 North, Range 12 West, De Soto Parish, Louisiana, containing approximately **40.017 acres**, all as more particularly outlined on a plat on file in the Office of Mineral Resources, Department of Natural Resources. All bearings, distances and coordinates are based on Louisiana Coordinate System of 1927, (North or South Zone), where applicable.

NOTE: The above description of the Tract nominated for the purpose of acquiring a mineral lease or a geophysical agreement has been provided and corrected, where required, exclusively by the nominating party. Any mineral lease or geophysical agreement selected from this Tract and awarded by the Louisiana State Mineral and Energy Board shall be without warranty of any kind, either express, implied or statutory including, but not limited to, title or the implied warranties of merchantability and fitness for a particular purpose.

An error or omission in the nominating party's Tract description may require that a State mineral lease or geophysical agreement be modified, canceled or abrogated due to the existence of conflicting leases, operating agreements, private claims or other future obligations or conditions within the Tract described. In such case, however, the Louisiana State Mineral and Energy Board shall not be obligated to refund any consideration paid by the Lessee prior to such modification, cancellation or abrogation including, but not limited to, bonuses, rentals and royalties.

Applicant: SLS SERVICES

Bidder	Cash Payment	Price/ Acre	Rental	Oil	Gas	Other



Legend



16050001

Active_Leases



0 2,000 Feet