

TRACT 44550 - Iberia Parish, Louisiana

All of the lands now or formerly constituting the beds and bottoms of all water bodies of every nature and description as to which title is vested in the State of Louisiana, together with all islands arising therein and other lands formed by accretion or by reliction, where allowed by law, excepting tax adjudicated lands, and not presently under mineral lease on May 11, 2016, situated in Iberia Parish, Louisiana, and more particularly described as follows: Beginning at a point having Coordinates of X = 1,871,847.78 and Y = 351,771.68; thence East 10,920.52 feet to a point having Coordinates of X = 1,882,768.30 and Y = 351,771.68; thence South 9,972.05 feet to a point having Coordinates of X = 1,882,768.30 and Y = 341,799.63; thence West 10,920.52 feet to a point having Coordinates of X = 1,871,847.78 and Y = 341,799.63; thence North 9,972.05 feet to the point of beginning, containing approximately **2,500.00 acres**, all as more particularly outlined on a plat on file in the Office of Mineral Resources, Department of Natural Resources. All bearings, distances and coordinates are based on Louisiana Coordinate System of 1927, (North or South Zone), where applicable.

NOTE: The above description of the Tract nominated for the purpose of acquiring a mineral lease or a geophysical agreement has been provided and corrected, where required, exclusively by the nominating party. Any mineral lease or geophysical agreement selected from this Tract and awarded by the Louisiana State Mineral and Energy Board shall be without warranty of any kind, either express, implied or statutory including, but not limited to, title or the implied warranties of merchantability and fitness for a particular purpose.

An error or omission in the nominating party's Tract description may require that a State mineral lease or geophysical agreement be modified, canceled or abrogated due to the existence of conflicting leases, operating agreements, private claims or other future obligations or conditions within the Tract described. In such case, however, the Louisiana State Mineral and Energy Board shall not be obligated to refund any consideration paid by the Lessee prior to such modification, cancellation or abrogation including, but not limited to, bonuses, rentals and royalties.

NOTE: The State of Louisiana does hereby reserve, and this lease shall be subject to, the imprescriptible right of surface use in the nature of a servitude in favor of the Department of Natural Resources, including its Offices and Commissions, for the sole purpose of implementing, constructing, servicing and maintaining approved coastal zone management and/or restoration projects. Utilization of any and all rights derived under this lease by the mineral lessee, its agents, successors or assigns, shall not interfere with nor hinder the reasonable surface use by the Department of Natural Resources, its Offices or Commissions, as herein above reserved.

NOTE: This tract is located in an area designated by the Louisiana Legislature or the Wildlife and Fisheries Commission as a Public Oyster Seed Ground, Reservation, or area of Calcasieu or Sabine Lake. Proposed projects occurring in these areas will be evaluated on a case by case basis by Louisiana Department of Wildlife & Fisheries. Modifications to proposed project features including, but not limited to, access routes, well sites, flowlines, and appurtenant structures maybe required by the Louisiana Department of Wildlife and Fisheries. In addition, compensatory mitigation will be required to offset unavoidable habitat impacts.

Applicant: ANGELLE & DONOHUE OIL & GAS PROPERTIES, INC.

Bidder	Cash Payment	Price/Acre	Rental	Oil	Gas	Other

Legend
16050013
Counties



TRACT 44551 - Iberia and St. Mary Parishes, Louisiana

All of the lands now or formerly constituting the beds and bottoms of all water bodies of every nature and description as to which title is vested in the State of Louisiana, together with all islands arising therein and other lands formed by accretion or by reliction, where allowed by law, excepting tax adjudicated lands, and not presently under mineral lease on May 11, 2016, situated in Iberia and St. Mary Parishes, Louisiana, and more particularly described as follows: Beginning at a point having Coordinates of X = 1,882,768.30 and Y = 351,771.68; thence East 10,920.52 feet to a point having Coordinates of X = 1,893,688.82 and Y = 351,771.68; thence South 9,972.05 feet to a point having Coordinates of X = 1,893,688.82 and Y = 341,799.63; thence West 10,920.52 feet to a point having Coordinates of X = 1,882,768.30 and Y = 341,799.63; thence North 9,972.05 feet to the point of beginning, containing approximately **2,500.00 acres**, all as more particularly outlined on a plat on file in the Office of Mineral Resources, Department of Natural Resources. All bearings, distances and coordinates are based on Louisiana Coordinate System of 1927, (North or South Zone), where applicable.

NOTE: The above description of the Tract nominated for the purpose of acquiring a mineral lease or a geophysical agreement has been provided and corrected, where required, exclusively by the nominating party. Any mineral lease or geophysical agreement selected from this Tract and awarded by the Louisiana State Mineral and Energy Board shall be without warranty of any kind, either express, implied or statutory including, but not limited to, title or the implied warranties of merchantability and fitness for a particular purpose.

An error or omission in the nominating party's Tract description may require that a State mineral lease or geophysical agreement be modified, canceled or abrogated due to the existence of conflicting leases, operating agreements, private claims or other future obligations or conditions within the Tract described. In such case, however, the Louisiana State Mineral and Energy Board shall not be obligated to refund any consideration paid by the Lessee prior to such modification, cancellation or abrogation including, but not limited to, bonuses, rentals and royalties.

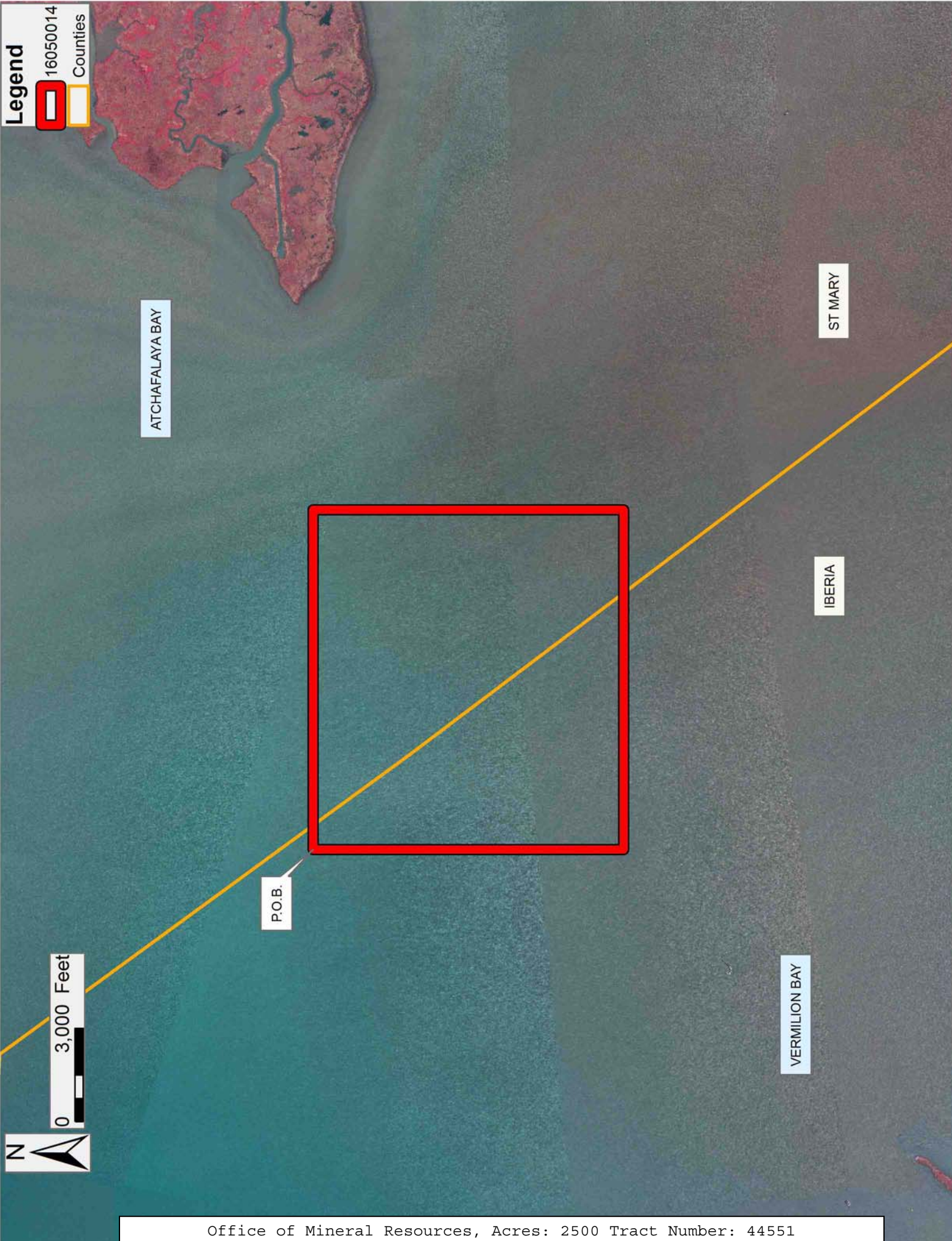
NOTE: The State of Louisiana does hereby reserve, and this lease shall be subject to, the imprescriptible right of surface use in the nature of a servitude in favor of the Department of Natural Resources, including its Offices and Commissions, for the sole purpose of implementing, constructing, servicing and maintaining approved coastal zone management and/or restoration projects. Utilization of any and all rights derived under this lease by the mineral lessee, its agents, successors or assigns, shall not interfere with nor hinder the reasonable surface use by the Department of Natural Resources, its Offices or Commissions, as herein above reserved.

NOTE: This tract is located in an area designated by the Louisiana Legislature or the Wildlife and Fisheries Commission as a Public Oyster Seed Ground, Reservation, or area of Calcasieu or Sabine Lake. Proposed projects occurring in these areas will be evaluated on a case by case basis by Louisiana Department of Wildlife & Fisheries. Modifications to proposed project features including, but not limited to, access routes, well sites, flowlines, and appurtenant structures maybe required by the Louisiana Department of Wildlife and Fisheries. In addition, compensatory mitigation will be required to offset unavoidable habitat impacts.

Applicant: ANGELLE & DONOHUE OIL & GAS PROPERTIES, INC.

Bidder	Cash Payment	Price/Acre	Rental	Oil	Gas	Other

Legend
 16050014
 Counties



ATCHAFALAYA BAY

ST MARY

IBERIA

VERMILION BAY

P.O.B.

0 3,000 Feet



TRACT 44552 - St. Mary Parish, Louisiana

All of the lands now or formerly constituting the beds and bottoms of all water bodies of every nature and description as to which title is vested in the State of Louisiana, together with all islands arising therein and other lands formed by accretion or by reliction, where allowed by law, excepting tax adjudicated lands, and not presently under mineral lease on May 11, 2016, situated in St. Mary Parish, Louisiana, and more particularly described as follows: Beginning at a point having Coordinates of X = 1,893,688.82 and Y = 351,771.68; thence East 10,920.52 feet to a point having Coordinates of X = 1,904,609.34 and Y = 351,771.68; thence South 9,271.68 feet to a point on the boundary of State Lease No. 16381 having Coordinates of X = 1,904,609.34 and Y = 342,500.00; thence along the boundary of said State Lease No. 16381 the following courses: West 1,609.34 feet to a point having Coordinates of X = 1,903,000.00 and Y = 342,500.00 and South 700.37 feet to a point having Coordinates of X = 1,903,000.00 and Y = 341,799.63; thence West 9,311.18 feet to a point having Coordinates of X = 1,893,688.82 and Y = 341,799.63; thence North 9,972.05 feet to the point of beginning, containing approximately **2,419 acres**, all as more particularly outlined on a plat on file in the Office of Mineral Resources, Department of Natural Resources. All bearings, distances and coordinates are based on Louisiana Coordinate System of 1927, (North or South Zone), where applicable.

NOTE: The above description of the Tract nominated for the purpose of acquiring a mineral lease or a geophysical agreement has been provided and corrected, where required, exclusively by the nominating party. Any mineral lease or geophysical agreement selected from this Tract and awarded by the Louisiana State Mineral and Energy Board shall be without warranty of any kind, either express, implied or statutory including, but not limited to, title or the implied warranties of merchantability and fitness for a particular purpose.

An error or omission in the nominating party's Tract description may require that a State mineral lease or geophysical agreement be modified, canceled or abrogated due to the existence of conflicting leases, operating agreements, private claims or other future obligations or conditions within the Tract described. In such case, however, the Louisiana State Mineral and Energy Board shall not be obligated to refund any consideration paid by the Lessee prior to such modification, cancellation or abrogation including, but not limited to, bonuses, rentals and royalties.

NOTE: The State of Louisiana does hereby reserve, and this lease shall be subject to, the imprescriptible right of surface use in the nature of a servitude in favor of the Department of Natural Resources, including its Offices and Commissions, for the sole purpose of implementing, constructing, servicing and maintaining approved coastal zone management and/or restoration projects. Utilization of any and all rights derived under this lease by the mineral lessee, its agents, successors or assigns,

shall not interfere with nor hinder the reasonable surface use by the Department of Natural Resources, its Offices or Commissions, as herein above reserved.

NOTE: This tract is located in an area designated by the Louisiana Legislature or the Wildlife and Fisheries Commission as a Public Oyster Seed Ground, Reservation, or area of Calcasieu or Sabine Lake. Proposed projects occurring in these areas will be evaluated on a case by case basis by Louisiana Department of Wildlife & Fisheries. Modifications to proposed project features including, but not limited to, access routes, well sites, flowlines, and appurtenant structures maybe required by the Louisiana Department of Wildlife and Fisheries. In addition, compensatory mitigation will be required to offset unavoidable habitat impacts.

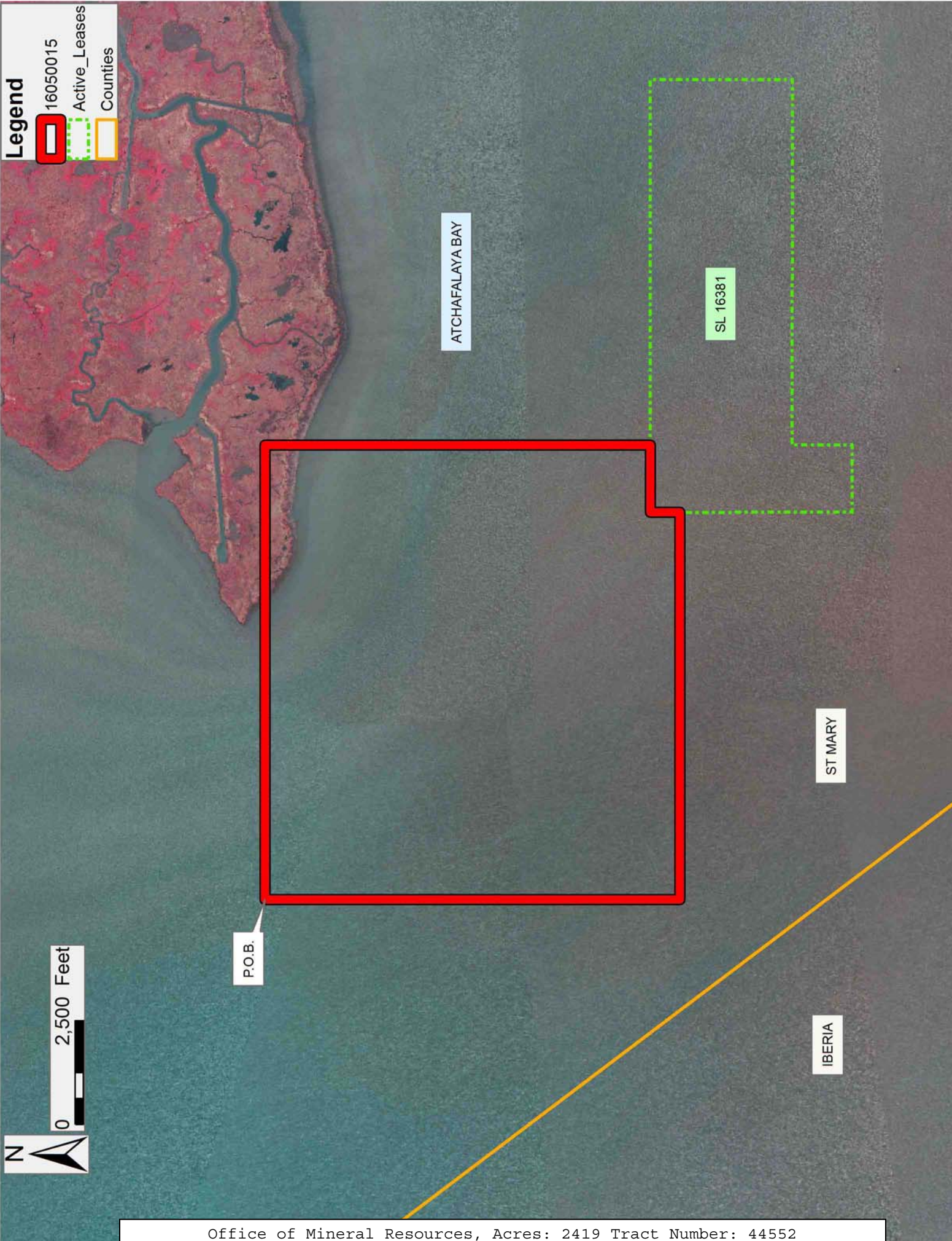
Applicant: ANGELLE & DONOHUE OIL & GAS PROPERTIES, INC.

Bidder	Cash Payment	Price/Acre	Rental	Oil	Gas	Other

Legend

- 16050015
- Active_Leases
- Counties

0 2,500 Feet



TRACT 44553 - Iberia Parish, Louisiana

All of the lands now or formerly constituting the beds and bottoms of all water bodies of every nature and description as to which title is vested in the State of Louisiana, together with all islands arising therein and other lands formed by accretion or by reliction, where allowed by law, excepting tax adjudicated lands, and not presently under mineral lease on May 11, 2016, situated in Iberia Parish, Louisiana, and more particularly described as follows: Beginning at a point having Coordinates of X = 1,865,969.21 and Y = 341,799.63; thence East 18,480.00 feet to a point having Coordinates of X = 1,884,449.21 and Y = 341,799.63; thence South 3,039.39 feet to the Northeast corner of State Lease No. 19139 having Coordinates of X = 1,884,449.21 and Y = 338,760.24; thence West 2,037.23 feet along the boundary of said State Lease No. 19139 to the Southeast corner of State Lease No. 21223 having Coordinates of X = 1,882,411.98 and Y = 338,760.24; thence along the boundary of said State Lease No. 21223 the following courses: North 2,152.76 feet to a point having Coordinates of X = 1,882,411.98 and Y = 340,913.00, West 2,359.98 feet to a point having Coordinates of X = 1,880,052.00 and Y = 340,913.00, South 1,040.00 feet to a point having Coordinates of X = 1,880,052.00 and Y = 339,873.00, West 2,395.00 feet to a point having Coordinates of X = 1,877,657.00 and Y = 339,873.00, South 740.80 feet to a point having Coordinates of X = 1,877,657.00 and Y = 339,132.20, South 89 degrees 49 minutes 42 seconds East 890.60 feet to a point having Coordinates of X = 1,878,547.60 and Y = 339,129.53 and South 00 degrees 15 minutes 28 seconds West 353.40 feet to its Southwest corner, also being the Northwest corner of said State Lease No. 19139 having Coordinates of X = 1,878,546.01 and Y = 338,776.13; thence South 00 degrees 13 minutes 52 seconds West 1,935.25 feet along the boundary of said State Lease No. 19139 to the Northernmost Northeast corner of State Lease No. 1706, as amended having Coordinates of X = 1,878,538.20 and Y = 336,840.90; thence along the boundary of said State Lease No. 1706 the following courses: North 89 degrees 45 minutes 51 seconds West 9,770.63 feet to a point having Coordinates of X = 1,868,767.65 and Y = 336,881.10, South 3,733.52 feet to a point having Coordinates of X = 1,868,767.65 and Y = 333,147.58 and North 89 degrees 45 minutes 52 seconds West 2,798.47 feet to a point having Coordinates of X = 1,865,969.21 and Y = 333,159.08; thence North 8,640.55 feet to the point of beginning, containing approximately **1,905.58 acres**, all as more particularly outlined on a plat on file in the Office of Mineral Resources, Department of Natural Resources. All bearings, distances and coordinates are based on Louisiana Coordinate System of 1927, (North or South Zone), where applicable.

NOTE: The above description of the Tract nominated for the purpose of acquiring a mineral lease or a geophysical agreement has been provided and corrected, where required, exclusively by the nominating party. Any mineral lease or geophysical agreement selected from this Tract and awarded by the Louisiana State Mineral and Energy Board shall be without warranty of any kind, either express, implied or statutory including, but

not limited to, title or the implied warranties of merchantability and fitness for a particular purpose.

An error or omission in the nominating party's Tract description may require that a State mineral lease or geophysical agreement be modified, canceled or abrogated due to the existence of conflicting leases, operating agreements, private claims or other future obligations or conditions within the Tract described. In such case, however, the Louisiana State Mineral and Energy Board shall not be obligated to refund any consideration paid by the Lessee prior to such modification, cancellation or abrogation including, but not limited to, bonuses, rentals and royalties.

NOTE: The State of Louisiana does hereby reserve, and this lease shall be subject to, the imprescriptible right of surface use in the nature of a servitude in favor of the Department of Natural Resources, including its Offices and Commissions, for the sole purpose of implementing, constructing, servicing and maintaining approved coastal zone management and/or restoration projects. Utilization of any and all rights derived under this lease by the mineral lessee, its agents, successors or assigns, shall not interfere with nor hinder the reasonable surface use by the Department of Natural Resources, its Offices or Commissions, as herein above reserved.

NOTE: This tract is located in an area designated by the Louisiana Legislature or the Wildlife and Fisheries Commission as a Public Oyster Seed Ground, Reservation, or area of Calcasieu or Sabine Lake. Proposed projects occurring in these areas will be evaluated on a case by case basis by Louisiana Department of Wildlife & Fisheries. Modifications to proposed project features including, but not limited to, access routes, well sites, flowlines, and appurtenant structures maybe required by the Louisiana Department of Wildlife and Fisheries. In addition, compensatory mitigation will be required to offset unavoidable habitat impacts.

NOTE: All or a portion of this Tract lies within one nautical mile of the boundary of the Russell Sage or Marsh Island Wildlife Refuge and Game Preserve. Any activities connected with this lease conducted within this Tract which may pose potential environmental impacts to the said Wildlife Refuge and Game Preserve should be coordinated with the Louisiana Department of Wildlife and Fisheries.

Applicant: ANGELLE & DONOHUE OIL & GAS PROPERTIES, INC.

Bidder	Cash Payment	Price/Acre	Rental	Oil	Gas	Other

Legend
16050016
Active_Leases

ATCHAFALAYA BAY

IBERIA

P.O.B.

VERMILION BAY

T17S - R7E

SL 21223

SL 19139

SL 1706

0 3,000 Feet



TRACT 44554 - Iberia and St. Mary Parishes, Louisiana

All of the lands now or formerly constituting the beds and bottoms of all water bodies of every nature and description as to which title is vested in the State of Louisiana, together with all islands arising therein and other lands formed by accretion or by reliction, where allowed by law, excepting tax adjudicated lands, and not presently under mineral lease on May 11, 2016, situated in Iberia and St. Mary Parishes, Louisiana, and more particularly described as follows: Beginning at a point having Coordinates of X = 1,884,449.21 and Y = 341,799.63; thence East 9,239.61 feet to a point having Coordinates of X = 1,893,688.82 and Y = 341,799.63; thence South 10,579.82 feet to a point having Coordinates of X = 1,893,688.82 and Y = 331,219.81; thence West 6,988.82 feet to a point on the boundary of State Lease No. 2276, as amended having Coordinates of X = 1,886,700.00 and Y = 331,219.81; thence along the boundary of said State Lease No. 2276 the following courses: North 1,000.18 feet to a point having Coordinates of X = 1,886,700.00 and Y = 332,219.99, North 39 degrees 14 minutes 55 seconds East 797.08 feet to a point having Coordinates of X = 1,887,204.30 and Y = 332,837.25 and North 89 degrees 45 minutes 52 seconds West 1,835.27 feet to the Easternmost corner of Operating Agreement A0302 having Coordinates of X = 1,885,369.04 and Y = 332,844.80; thence along the boundary of said Operating Agreement A0302 the following courses: North 38 degrees 53 minutes 02 seconds West 173.69 feet to a point having Coordinates of X = 1,885,260.01 and Y = 332,980.00, North 53 degrees 44 minutes 46 seconds West 372.02 feet to a point having Coordinates of X = 1,884,960.01 and Y = 333,200.00, North 64 degrees 26 minutes 24 seconds West 509.90 feet to a point having Coordinates of X = 1,884,500.01 and Y = 333,420.00 and North 73 degrees 18 minutes 05 seconds West 75.72 feet to its Northwest corner, also being a point on the boundary of State Lease No. 19139 having Coordinates of X = 1,884,427.48 and Y = 333,441.76; thence along the boundary of said State Lease No. 19139 the following courses: North 00 degrees 14 minutes 09 seconds East 3,383.28 feet to a point having Coordinates of X = 1,884,441.40 and Y = 336,825.01 and North 00 degrees 13 minutes 52 seconds East 1,935.25 feet to its Northeast corner having Coordinates of X = 1,884,449.21 and Y = 338,760.24; thence North 3,039.39 feet to the point of beginning, containing approximately **2,150.52 acres**, all as more particularly outlined on a plat on file in the Office of Mineral Resources, Department of Natural Resources. All bearings, distances and coordinates are based on Louisiana Coordinate System of 1927, (North or South Zone), where applicable.

NOTE: The above description of the Tract nominated for the purpose of acquiring a mineral lease or a geophysical agreement has been provided and corrected, where required, exclusively by the nominating party. Any mineral lease or geophysical agreement selected from this Tract and awarded by the Louisiana State Mineral and Energy Board shall be without warranty of any kind, either express, implied or statutory including, but not limited to, title or the implied warranties of merchantability and fitness for a particular purpose.

An error or omission in the nominating party's Tract description may require that a State mineral lease or geophysical agreement be modified, canceled or abrogated due to the existence of conflicting leases, operating agreements, private claims or other future obligations or conditions within the Tract described. In such case, however, the Louisiana State Mineral and Energy Board shall not be obligated to refund any consideration paid by the Lessee prior to such modification, cancellation or abrogation including, but not limited to, bonuses, rentals and royalties.

NOTE: The State of Louisiana does hereby reserve, and this lease shall be subject to, the imprescriptible right of surface use in the nature of a servitude in favor of the Department of Natural Resources, including its Offices and Commissions, for the sole purpose of implementing, constructing, servicing and maintaining approved coastal zone management and/or restoration projects. Utilization of any and all rights derived under this lease by the mineral lessee, its agents, successors or assigns, shall not interfere with nor hinder the reasonable surface use by the Department of Natural Resources, its Offices or Commissions, as herein above reserved.

NOTE: This tract is located in an area designated by the Louisiana Legislature or the Wildlife and Fisheries Commission as a Public Oyster Seed Ground, Reservation, or area of Calcasieu or Sabine Lake. Proposed projects occurring in these areas will be evaluated on a case by case basis by Louisiana Department of Wildlife & Fisheries. Modifications to proposed project features including, but not limited to, access routes, well sites, flowlines, and appurtenant structures maybe required by the Louisiana Department of Wildlife and Fisheries. In addition, compensatory mitigation will be required to offset unavoidable habitat impacts.

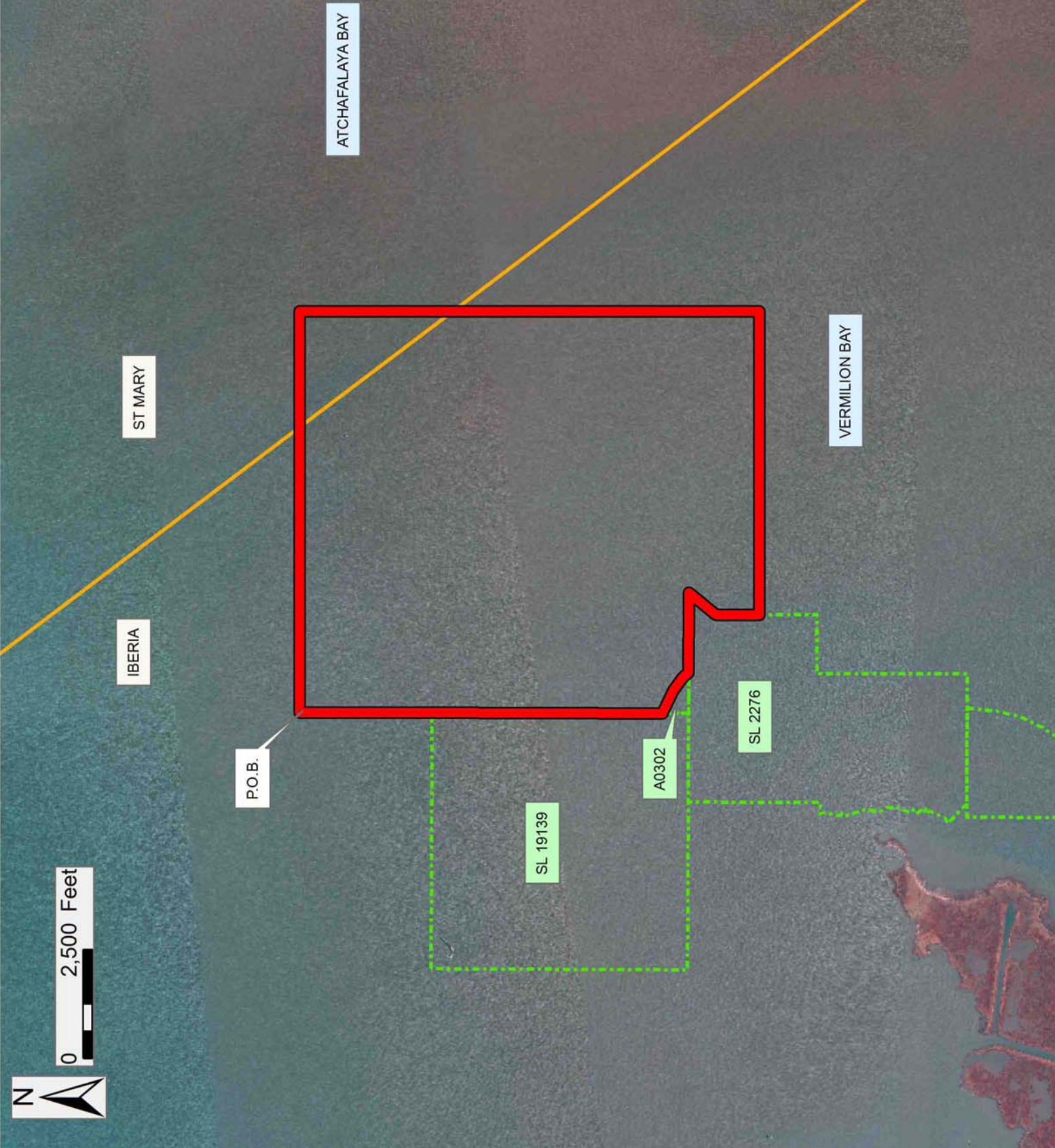
NOTE: All or a portion of this Tract lies within one nautical mile of the boundary of the Russell Sage or Marsh Island Wildlife Refuge and Game Preserve. Any activities connected with this lease conducted within this Tract which may pose potential environmental impacts to the said Wildlife Refuge and Game Preserve should be coordinated with the Louisiana Department of Wildlife and Fisheries.

Applicant: ANGELLE & DONOHUE OIL & GAS PROPERTIES, INC.

Bidder	Cash Payment	Price/Acre	Rental	Oil	Gas	Other

Legend

- 16050017
- Active_Leases
- Counties



TRACT 44555 - Iberia and St. Mary Parishes, Louisiana

All of the lands now or formerly constituting the beds and bottoms of all water bodies of every nature and description as to which title is vested in the State of Louisiana, together with all islands arising therein and other lands formed by accretion or by reliction, where allowed by law, excepting tax adjudicated lands, and not presently under mineral lease on May 11, 2016, situated in Iberia and St. Mary Parishes, Louisiana, and more particularly described as follows: Beginning at a point having Coordinates of X = 1,893,688.82 and Y = 341,799.63; thence East 9,311.18 feet to a point on the boundary of State Lease No. 16381 having Coordinates of X = 1,903,000.00 and Y = 341,799.63; thence along the boundary of said State Lease No. 16381 the following courses: South 4,149.63 feet to a point having Coordinates of X = 1,903,000.00 and Y = 337,650.00 and East 1,617.18 feet to its Southernmost Southeast corner, also being a point on the boundary of State Lease No. 10251, as amended having Coordinates of X = 1,904,617.18 and Y = 337,650.00; thence South 00 degrees 06 minutes 10 seconds West 2,788.89 feet along the boundary of said State Lease No. 10251 to its Southwest corner having Coordinates of X = 1,904,612.18 and Y = 334,861.11; thence South 3,641.30 feet to a point having Coordinates of X = 1,904,612.18 and Y = 331,219.81; thence West 10,923.36 feet to a point having Coordinates of X = 1,893,688.82 and Y = 331,219.81; thence North 10,579.82 feet to the point of beginning, containing approximately **2,499.64 acres**, all as more particularly outlined on a plat on file in the Office of Mineral Resources, Department of Natural Resources. All bearings, distances and coordinates are based on Louisiana Coordinate System of 1927, (North or South Zone), where applicable.

NOTE: The above description of the Tract nominated for the purpose of acquiring a mineral lease or a geophysical agreement has been provided and corrected, where required, exclusively by the nominating party. Any mineral lease or geophysical agreement selected from this Tract and awarded by the Louisiana State Mineral and Energy Board shall be without warranty of any kind, either express, implied or statutory including, but not limited to, title or the implied warranties of merchantability and fitness for a particular purpose.

An error or omission in the nominating party's Tract description may require that a State mineral lease or geophysical agreement be modified, canceled or abrogated due to the existence of conflicting leases, operating agreements, private claims or other future obligations or conditions within the Tract described. In such case, however, the Louisiana State Mineral and Energy Board shall not be obligated to refund any consideration paid by the Lessee prior to such modification, cancellation or abrogation including, but not limited to, bonuses, rentals and royalties.

NOTE: The State of Louisiana does hereby reserve, and this lease shall be subject to, the imprescriptible right of surface use in the nature of a

servitude in favor of the Department of Natural Resources, including its Offices and Commissions, for the sole purpose of implementing, constructing, servicing and maintaining approved coastal zone management and/or restoration projects. Utilization of any and all rights derived under this lease by the mineral lessee, its agents, successors or assigns, shall not interfere with nor hinder the reasonable surface use by the Department of Natural Resources, its Offices or Commissions, as herein above reserved.

NOTE: This tract is located in an area designated by the Louisiana Legislature or the Wildlife and Fisheries Commission as a Public Oyster Seed Ground, Reservation, or area of Calcasieu or Sabine Lake. Proposed projects occurring in these areas will be evaluated on a case by case basis by Louisiana Department of Wildlife & Fisheries. Modifications to proposed project features including, but not limited to, access routes, well sites, flowlines, and appurtenant structures maybe required by the Louisiana Department of Wildlife and Fisheries. In addition, compensatory mitigation will be required to offset unavoidable habitat impacts.

Applicant: ANGELLE & DONOHUE OIL & GAS PROPERTIES, INC.

Bidder	Cash Payment	Price/Acre	Rental	Oil	Gas	Other

Legend

- 16050018
- Active_Leases
- Counties

0 2,500 Feet

