

TRACT 44285 - De Soto Parish, Louisiana

All of the lands now or formerly constituting the beds and bottoms of all water bodies of every nature and description as to which title is vested in the State of Louisiana, together with all islands arising therein and other lands formed by accretion or by reliction, where allowed by law, excepting tax adjudicated lands, and not presently under mineral lease on May 13, 2015, situated in De Soto Parish, Louisiana, and more particularly described as follows: Beginning at a point being the Northeast corner of State Lease No. 21221 having Coordinates of X = 1,619,838.73 and Y = 605,406.30, said point also being on the Southern boundary of State Lease No. 20356, as amended; thence along the Southern boundary of said State Lease No. 20356, as amended, the following: South 88 degrees 57 minutes 00 seconds East 391.85 feet to a point having Coordinates of X = 1,620,230.51 and Y = 605,399.12, and South 00 degrees 41 minutes 35 seconds West 22.32 feet to a point having Coordinates of X = 1,620,230.24 and Y = 605,376.80; thence South 00 degrees 41 minutes 36 seconds West 5,168.36 feet to a point on the Northern boundary of State Lease No. 18371, as amended, having Coordinates of X = 1,620,167.70 and Y = 600,208.82; thence North 86 degrees 42 minutes 27 seconds West 370.00 feet along the boundary of said State Lease No. 18371, as amended, to a point being the Southeast corner of said State Lease No. 21221 having Coordinates of X 1,619,798.31 and Y = 600,230.07; thence North 00 degrees 26 minutes 51 seconds East 5,176.39 feet to the point of beginning, containing approximately **19.292 acres**, all as more particularly outlined on a plat on file in the Office of Mineral Resources, Department of Natural Resources. All bearings, distances and coordinates are based on Louisiana Coordinate System of 1927, (North or South Zone), where applicable.

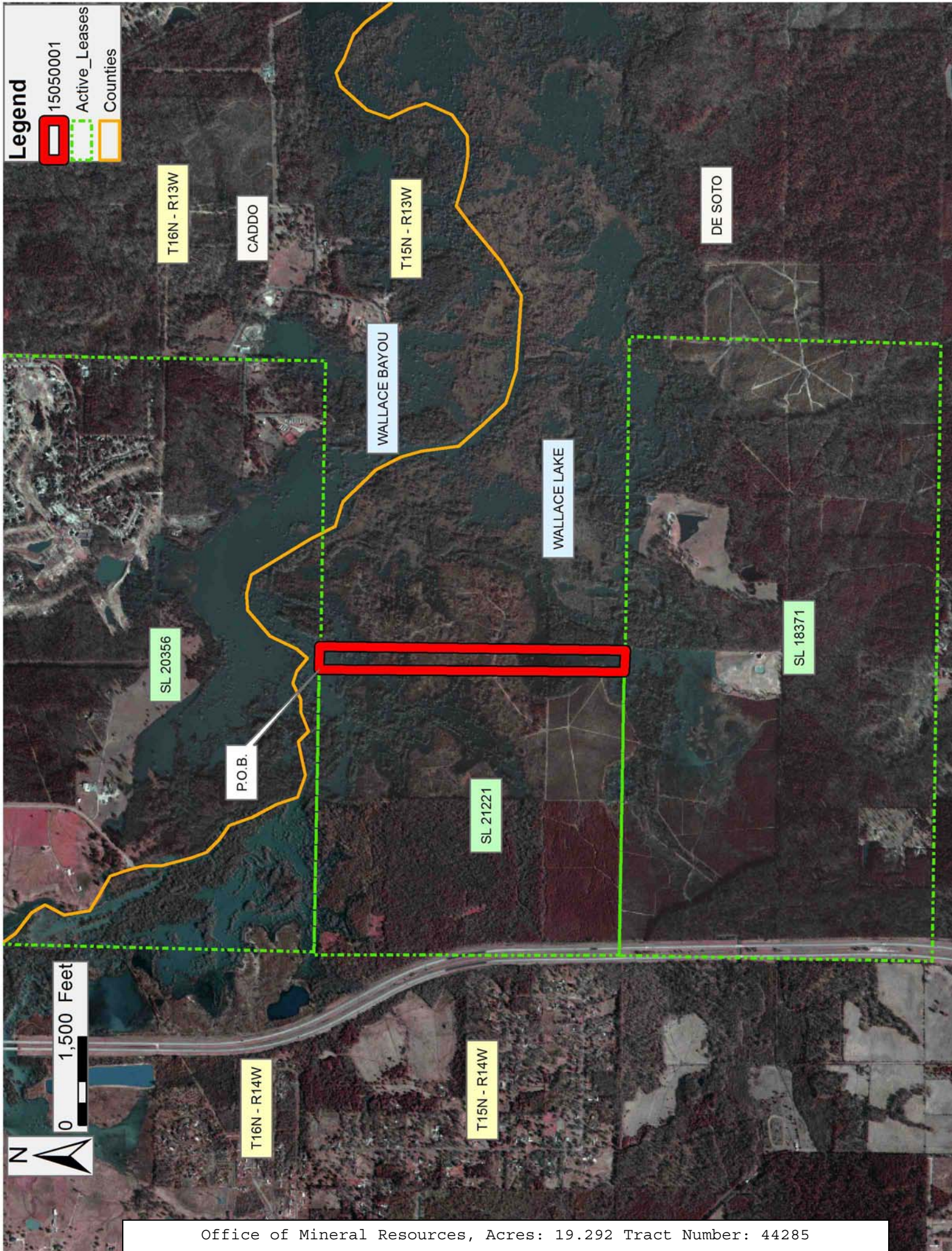
NOTE: The above description of the Tract nominated for the purpose of acquiring a mineral lease or a geophysical agreement has been provided and corrected, where required, exclusively by the nominating party. Any mineral lease or geophysical agreement selected from this Tract and awarded by the Louisiana State Mineral and Energy Board shall be without warranty of any kind, either express, implied or statutory including, but not limited to, title or the implied warranties of merchantability and fitness for a particular purpose.

An error or omission in the nominating party's Tract description may require that a State mineral lease or geophysical agreement be modified, canceled or abrogated due to the existence of conflicting leases, operating agreements, private claims or other future obligations or conditions within the Tract described. In such case, however, the Louisiana State Mineral and Energy Board shall not be obligated to refund any consideration paid by the Lessee prior to such modification, cancellation or abrogation including, but not limited to, bonuses, rentals and royalties.

| Bidder | Cash Payment | Price/ Acre | Rental | Oil | Gas | Other |
|--------|-----------------|----------------|--------|-----|-----|-------|
|--------|-----------------|----------------|--------|-----|-----|-------|

| | | | | | | |
|--|--|--|--|--|--|--|
| | | | | | | |
| | | | | | | |
| | | | | | | |
| | | | | | | |

Applicant: WILL-DRILL RESOURCES, INC.



Legend

- 15050001
- Active_Leases
- Counties

0 1,500 Feet



TRACT 44286 - St. Mary Parish, Louisiana

All of the lands now or formerly constituting the beds and bottoms of all water bodies of every nature and description as to which title is vested in the State of Louisiana, together with all islands arising therein and other lands formed by accretion or by reliction, where allowed by law, excepting tax adjudicated lands, and not presently under mineral lease on May 13, 2015, situated in St. Mary Parish, Louisiana, and more particularly described as follows: Beginning at a point having Coordinates of X = 2,011,683.43 and Y = 340,290.40; thence 89 degrees 30 minutes 01 seconds East 2,725.37 feet to a point having Coordinates of X = 2,014,408.70 and Y = 340,314.17; thence North 00 degrees 01 minutes 20 seconds West 400.18 feet to a point having Coordinates of X = 2,014,408.54 and Y = 340,714.35; thence North 89 degrees 12 minutes 30 seconds East 2,650.32 feet to a point having Coordinates of X = 2,017,058.61 and Y = 340,750.97; thence South 00 degrees 18 minutes 06 seconds East 8,314.51 feet to a point having Coordinates of X = 2,017,102.40 and Y = 332,436.58; thence West 5,354.21 feet to a point having Coordinates of X = 2,011,748.19 and Y = 332,436.58; thence North 00 degrees 28 minutes 21 seconds West 7,854.09 feet to the point of beginning, containing approximately **56 acres**, all as more particularly outlined on a plat on file in the Office of Mineral Resources, Department of Natural Resources. All bearings, distances and coordinates are based on Louisiana Coordinate System of 1927, (North or South Zone), where applicable.

NOTE: The above description of the Tract nominated for the purpose of acquiring a mineral lease or a geophysical agreement has been provided and corrected, where required, exclusively by the nominating party. Any mineral lease or geophysical agreement selected from this Tract and awarded by the Louisiana State Mineral and Energy Board shall be without warranty of any kind, either express, implied or statutory including, but not limited to, title or the implied warranties of merchantability and fitness for a particular purpose.

An error or omission in the nominating party's Tract description may require that a State mineral lease or geophysical agreement be modified, canceled or abrogated due to the existence of conflicting leases, operating agreements, private claims or other future obligations or conditions within the Tract described. In such case, however, the Louisiana State Mineral and Energy Board shall not be obligated to refund any consideration paid by the Lessee prior to such modification, cancellation or abrogation including, but not limited to, bonuses, rentals and royalties.

NOTE: The Office of Mineral Resources will require a minimum bonus of \$175 per acre and a minimum royalty of 21%.

NOTE: The State of Louisiana does hereby reserve, and this lease shall be subject to, the imprescriptible right of surface use in the nature of a servitude in favor of the Department of Natural Resources, including its

Offices and Commissions, for the sole purpose of implementing, constructing, servicing and maintaining approved coastal zone management and/or restoration projects. Utilization of any and all rights derived under this lease by the mineral lessee, its agents, successors or assigns, shall not interfere with nor hinder the reasonable surface use by the Department of Natural Resources, its Offices or Commissions, as herein above reserved.

Applicant: STAFF OFFICE OF MINERAL RESOURCES

| Bidder | Cash Payment | Price/ Acre | Rental | Oil | Gas | Other |
|--------|-----------------|----------------|--------|-----|-----|-------|
| | | | | | | |
| | | | | | | |
| | | | | | | |
| | | | | | | |

