

TRACT 40986 - Lafourche Parish, Louisiana

All of the lands now or formerly constituting the beds and bottoms of all water bodies of every nature and description as to which title is vested in the State of Louisiana, together with all islands arising therein and other lands formed by accretion or by reliction, where allowed by law, excepting tax adjudicated lands, and not presently under mineral lease on May 13, 2009, situated in Lafourche Parish, Louisiana, and more particularly described as follows: Beginning at a point having Coordinates of X = 2,302,118.26 and Y = 264,909.79; thence North 5,205.80 feet to a point at the Southwest corner of State Lease No. 19704, having Coordinates of X = 2,302,118.26 and Y = 270,115.59; thence North 88 Degrees 34 Minutes 10 Seconds East 8,109.63 feet to a point at the Southeast corner of said State Lease No. 19704, having Coordinates of X = 2,310,225.36 and Y = 270,318.04; thence along the East line of said State Lease No. 19704 North 01 Degrees 05 Minutes 44 Seconds West 5,325.38 feet to a point on the Western boundary of State Lease No. 19531, having Coordinates of X = 2,310,123.55 and Y = 275,642.44; thence along the Western boundary of said State Lease No. 19531 the following courses: South 35 Degrees 30 Minutes 54 Seconds East 3,164.94 feet, South 27 Degrees 28 Minutes 53 Seconds East 3,843.46 feet, South 18 Degrees 56 Minutes 58 Seconds East 2,469.66 feet, and South 2,173.16 feet to a point at the Southwest corner of said State Lease No. 19531, having Coordinates of X = 2,314,537.71 and Y = 265,147.55, said point also being on the Northern boundary of State Lease No. 378; thence in a Westerly direction along the Northern boundary of said State Lease No. 378, approximately 9,572 feet to the Northwest corner of said State Lease No. 378; thence in a Westerly direction approximately 2,851 feet to the point of beginning, containing approximately **81 acres, LESS AND EXCEPT** any portion of said State Lease NO. 378 that lies within the above described boundary, , all as more particularly outlined on a plat on file in the Office of Mineral Resources, Department of Natural Resources. All bearings, distances and coordinates are based on Louisiana Coordinate System of 1927, (North or South Zone), where applicable.

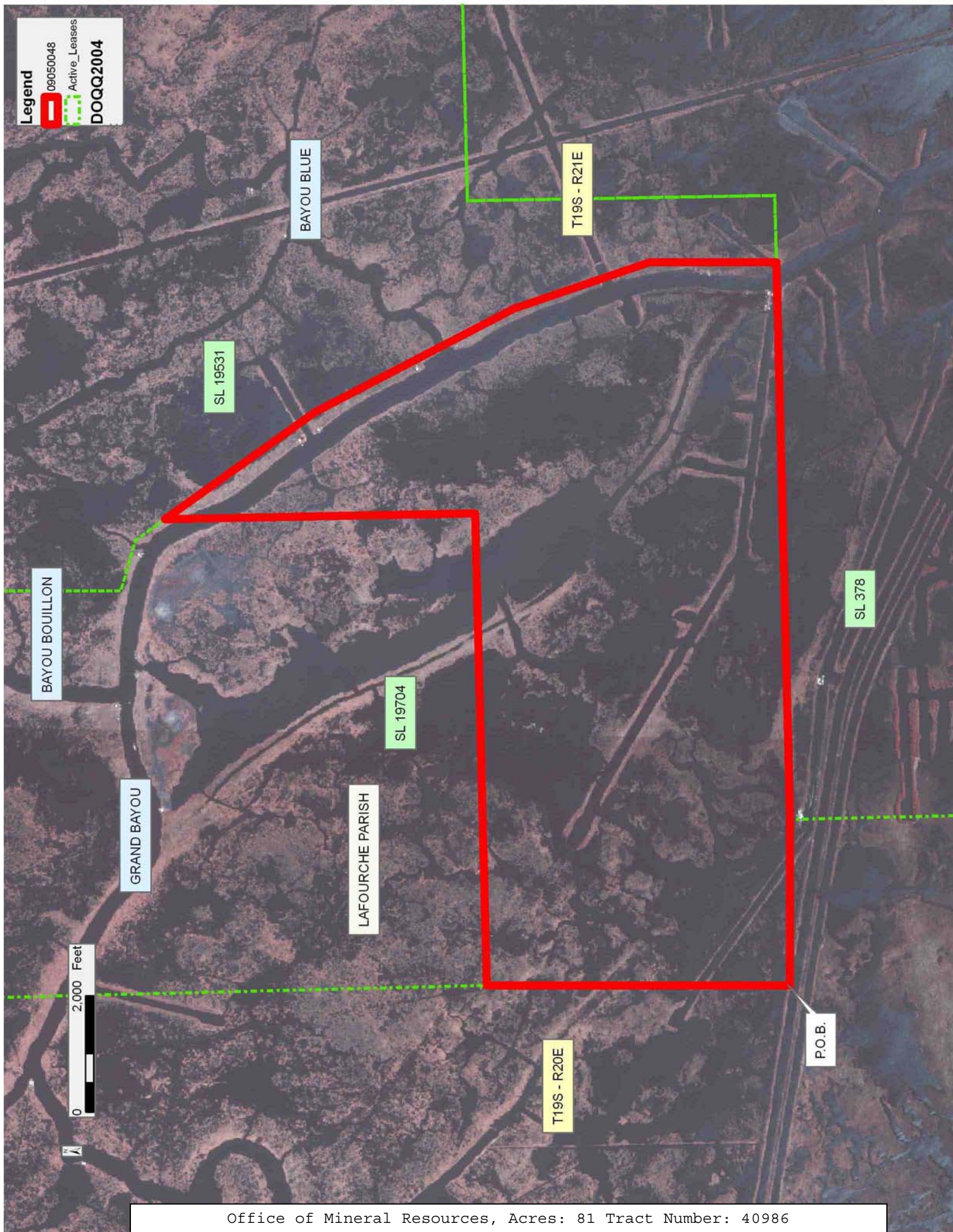
NOTE: The above description of the Tract nominated for lease has been provided and corrected, where required, exclusively by the nomination party. Any mineral lease selected from this Tract and awarded by the Louisiana State Mineral Board shall be without warranty of any kind, either express, implied, or statutory, including, but not limited to, the implied warranties of merchantability and fitness for a particular purpose. Should the mineral lease awarded by the Louisiana State Mineral Board be subsequently modified, cancelled or abrogated due to the existence of conflicting leases, operating agreements, private claims or other future obligations or conditions which may affect all or any portion of the leased Tract, it shall not relieve the Lessee of the obligation to pay any bonus due thereon to the Louisiana State Mineral Board, nor shall the Louisiana State Mineral Board be obligated to refund any consideration paid by the Lessor prior to such modification, cancellation, or abrogation, including, but not limited to, bonuses, rentals and royalties.

NOTE: The State of Louisiana does hereby reserve, and this lease shall be subject to, the imprescriptible right of surface use in the nature of a servitude in favor of the Department of Natural Resources, including its Offices and Commissions, for the sole purpose of implementing, constructing, servicing and maintaining approved coastal zone management and/or restoration projects. Utilization of any and all rights derived under this lease by the mineral lessee, its agents, successors or assigns, shall not interfere with nor hinder the reasonable surface use by the Department of Natural Resources, its Offices or Commissions, as herein above reserved.

Applicant: SPECTER EXPLORATION, INC.

Bidder	Cash Payment	Price/ Acre	Rental	Oil	Gas	Other

Legend
09050048
Active_Leases
DOQQ2004



TRACT 40987 - Jefferson Parish, Louisiana

All of the lands now or formerly constituting the beds and bottoms of all water bodies of every nature and description as to which title is vested in the State of Louisiana, together with all islands arising therein and other lands formed by accretion or by reliction, where allowed by law, excepting tax adjudicated lands, and not presently under mineral lease on May 13, 2009, situated in Jefferson Parish, Louisiana, and more particularly described as follows: Beginning at a point on the West boundary of State Lease No. 15631, as amended, having Coordinates of X = 2,431,127.83 and Y = 273,346.93; thence South along the West line of State Lease No. 15631, as amended, a distance of 1542.30 feet to its Southwest corner having Coordinates of X = 2,431,127.83 and Y = 271,804.63, said point also being the Northwest corner of State Lease No. 15744, as amended; thence South along the West line of State Lease No. 15744, as amended, a distance of 3,234.63 feet to its Southwest corner having Coordinates of X = 2,431,127.83 and Y = 268,570.00; thence South a distance of 7,009.87 feet to a point having Coordinates of X = 2,431,127.83 and Y = 261,560.13; thence West a distance of approximately 4,040 feet to a point on the common Eastern boundary of State Lease No. 1217, as amended, and a portion of State Lease No. 356, as amended, having a Coordinate of Y = 261,560.13; thence Northerly approximately 6,742 feet along the common Eastern boundary of said State Lease No. 1217, as amended and said portion of said State Lease No. 356, as amended to the Northernmost corner of said portion of said State Lease No. 356, as amended; thence continue Northerly approximately 694 feet along the Eastern boundary of said State Lease No. 1217, as amended; thence Westerly approximately 2,500 feet along the boundary of said State Lease No. 1217, as amended; thence Northerly approximately 4,354 feet along the boundary of said State Lease No. 1217, as amended to a point having a Coordinate of Y = 273,346.93; thence Easterly approximately 6,542 feet to the point of beginning. **LESS AND EXCEPT** that portion, if any, of State Lease No. 1217, as amended and State Lease No. 356, as amended, that may lie within the above described tract, containing approximately **1266 acres**, all as more particularly outlined on a plat on file in the Office of Mineral Resources, Department of Natural Resources. All bearings, distances and coordinates are based on Louisiana Coordinate System of 1927, (North or South Zone), where applicable.

NOTE: The above description of the Tract nominated for lease has been provided and corrected, where required, exclusively by the nomination party. Any mineral lease selected from this Tract and awarded by the Louisiana State Mineral Board shall be without warranty of any kind, either express, implied, or statutory, including, but not limited to, the implied warranties of merchantability and fitness for a particular purpose. Should the mineral lease awarded by the Louisiana State Mineral Board be subsequently modified, cancelled or abrogated due to the existence of conflicting leases, operating agreements, private claims or other future obligations or conditions which may affect all or any portion of the leased Tract, it shall not relieve the Lessee of the obligation to

pay any bonus due thereon to the Louisiana State Mineral Board, nor shall the Louisiana State Mineral Board be obligated to refund any consideration paid by the Lessor prior to such modification, cancellation, or abrogation, including, but not limited to, bonuses, rentals and royalties.

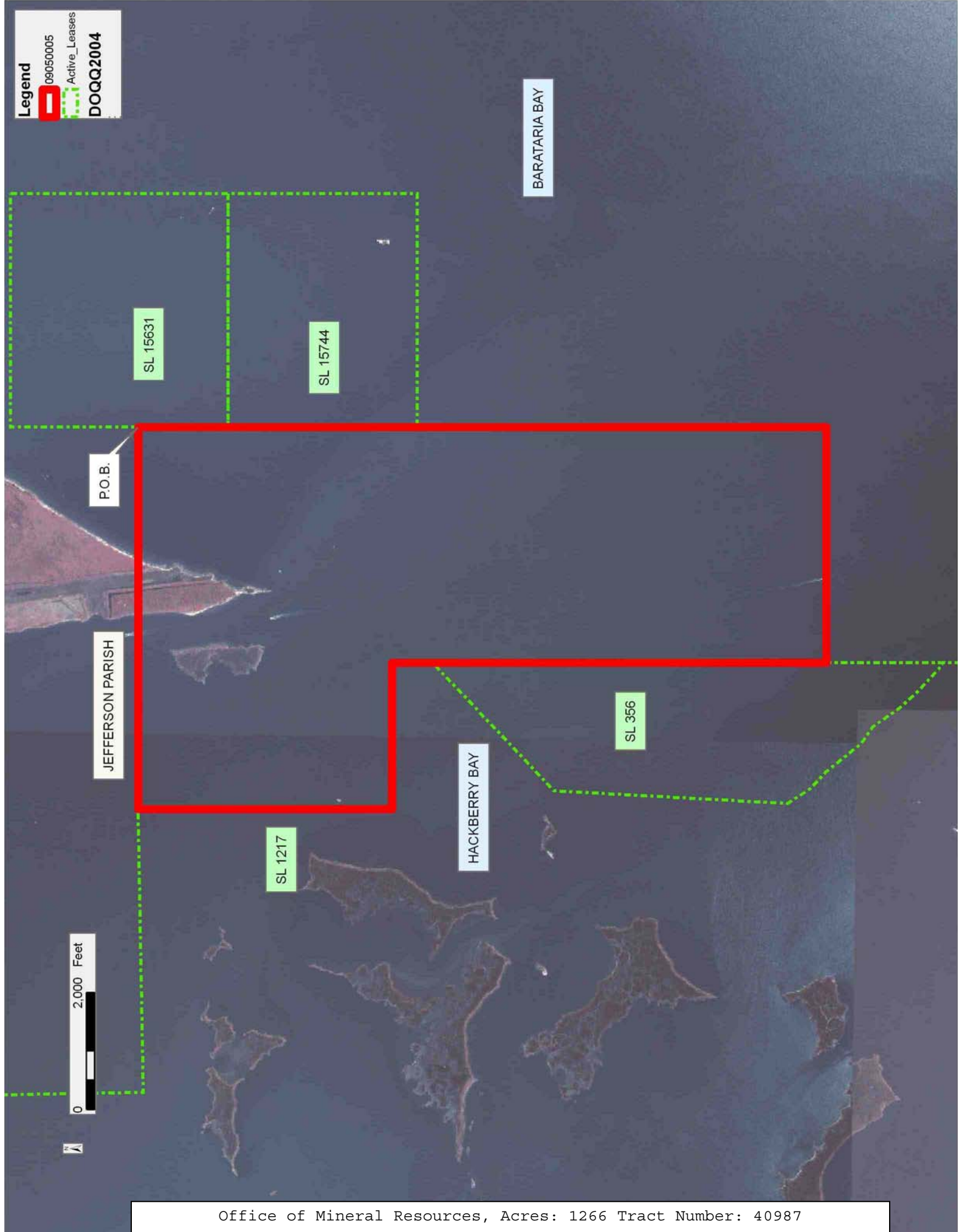
NOTE: The State of Louisiana does hereby reserve, and this lease shall be subject to, the imprescriptible right of surface use in the nature of a servitude in favor of the Department of Natural Resources, including its Offices and Commissions, for the sole purpose of implementing, constructing, servicing and maintaining approved coastal zone management and/or restoration projects. Utilization of any and all rights derived under this lease by the mineral lessee, its agents, successors or assigns, shall not interfere with nor hinder the reasonable surface use by the Department of Natural Resources, its Offices or Commissions, as herein above reserved.

NOTE: The Department of Wildlife and Fisheries has designated certain areas in the coastal waters of the State of Louisiana as Oyster Seed Bed Areas. The exact location of those Seed Bed Areas must be obtained from the Department of Wildlife and Fisheries and any work done under a mineral lease from the State of Louisiana may necessarily be conducted in conformity with the rules and regulations promulgated by the said Department of Wildlife and Fisheries for Oyster Seed Bed Areas.

Applicant: LANDSOLUTIONS, INC.

Bidder	Cash Payment	Price/ Acre	Rental	Oil	Gas	Other

Legend
09050005
Active_Leases
DOQQ2004



TRACT 40988 - Lafourche and Terrebonne Parishes, Louisiana

All of the lands now or formerly constituting the beds and bottoms of all water bodies of every nature and description as to which title is vested in the State of Louisiana, together with all islands arising therein and other lands formed by accretion or by reliction, where allowed by law, excepting tax adjudicated lands, and not presently under mineral lease on May 13, 2009, situated in Lafourche and Terrebonne Parishes, Louisiana, and more particularly described as follows: Beginning at a point having Coordinates of X = 2,288,894.00 feet and Y = 273,300.00 feet; thence East 13,145.33 feet to a point having Coordinates of X = 2,302,039.33 feet and Y = 273,300.00 feet; thence South 01 Degrees 25 Minutes 11 Seconds East 3,185.39 feet to the Southwest corner of State Lease No. 19704 having Coordinates of X = 2,302,118.26 feet and Y = 270,115.59 feet; thence South 7,000.00 feet to a point having Coordinates of X = 2,302,118.26 feet and Y = 263,115.59 feet; thence West 6,618.26 feet to a point having Coordinates of X = 2,295,500.00 feet and Y = 263,115.59; thence South 7,815.59 feet to a point having Coordinates of X = 2,295,500.00 feet and Y = 255,300.00 feet; thence West 5,000.00 feet to a point having Coordinates of X = 2,290,500.00 feet and Y = 255,300.00 feet; thence North 13,757.15 feet to a point having Coordinates of X = 2,290,500.00 feet and Y = 269,057.15 feet; thence West 1,606.00 feet to a point having Coordinates of X = 2,288,894.00 feet and Y = 269,057.15 feet; thence North 4,242.85 feet to the point of beginning, containing approximately **107 acres**, all as more particularly outlined on a plat on file in the Office of Mineral Resources, Department of Natural Resources. All bearings, distances and coordinates are based on Louisiana Coordinate System of 1927, (North or South Zone), where applicable.

NOTE: The above description of the Tract nominated for lease has been provided and corrected, where required, exclusively by the nomination party. Any mineral lease selected from this Tract and awarded by the Louisiana State Mineral Board shall be without warranty of any kind, either express, implied, or statutory, including, but not limited to, the implied warranties of merchantability and fitness for a particular purpose. Should the mineral lease awarded by the Louisiana State Mineral Board be subsequently modified, cancelled or abrogated due to the existence of conflicting leases, operating agreements, private claims or other future obligations or conditions which may affect all or any portion of the leased Tract, it shall not relieve the Lessee of the obligation to pay any bonus due thereon to the Louisiana State Mineral Board, nor shall the Louisiana State Mineral Board be obligated to refund any consideration paid by the Lessor prior to such modification, cancellation, or abrogation, including, but not limited to, bonuses, rentals and royalties.

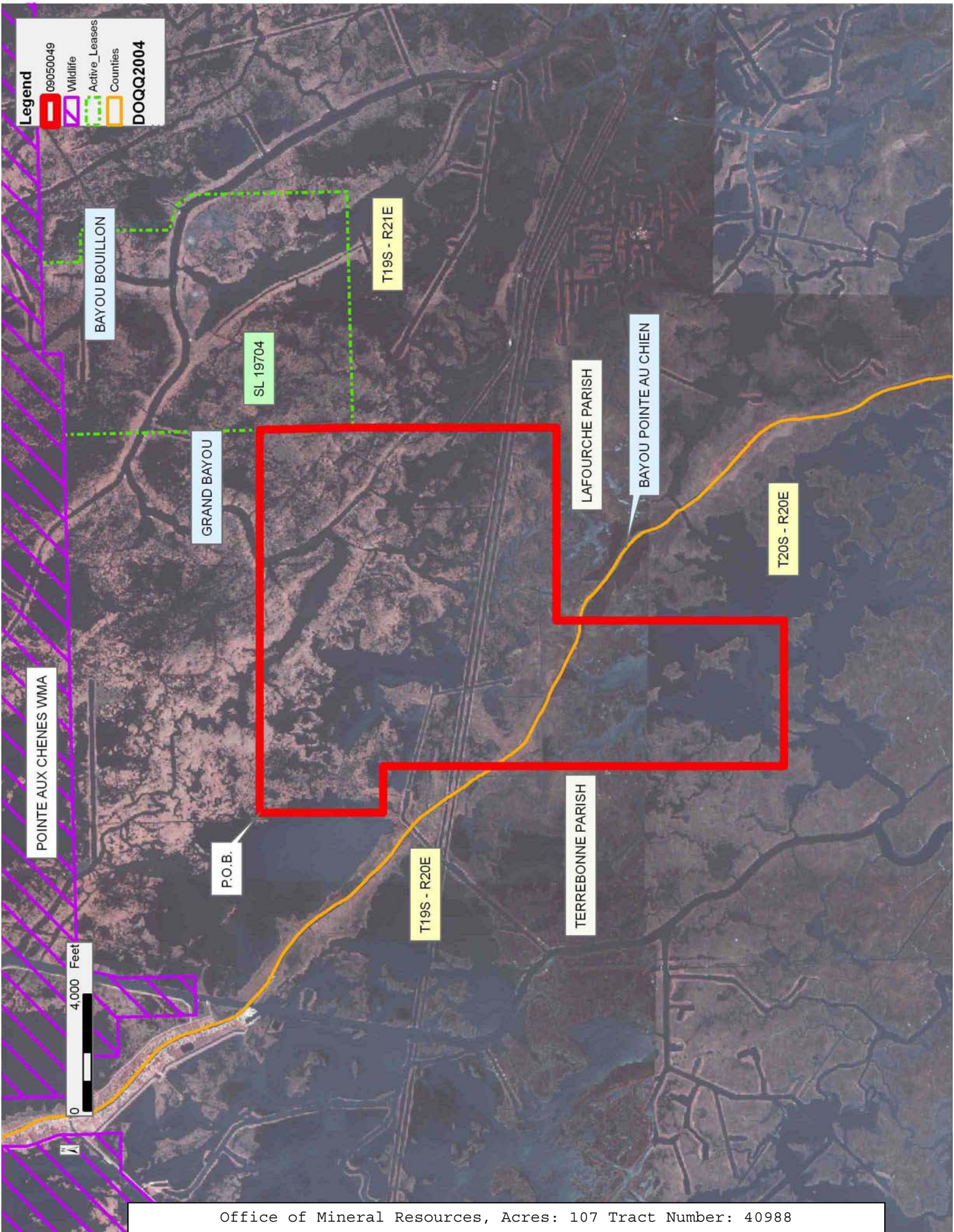
NOTE: The State of Louisiana does hereby reserve, and this lease shall be subject to, the imprescriptible right of surface use in the nature of a servitude in favor of the Department of Natural Resources, including its Offices and Commissions, for the sole purpose of implementing, constructing, servicing and maintaining approved coastal zone management

and/or restoration projects. Utilization of any and all rights derived under this lease by the mineral lessee, its agents, successors or assigns, shall not interfere with nor hinder the reasonable surface use by the Department of Natural Resources, its Offices or Commissions, as herein above reserved.

NOTE: The Department of Wildlife and Fisheries has designated certain areas in the coastal waters of the State of Louisiana as Oyster Seed Bed Areas. The exact location of those Seed Bed Areas must be obtained from the Department of Wildlife and Fisheries and any work done under a mineral lease from the State of Louisiana may necessarily be conducted in conformity with the rules and regulations promulgated by the said Department of Wildlife and Fisheries for Oyster Seed Bed Areas.

Applicant: SPECTER EXPLORATION, INC.

Bidder	Cash Payment	Price/ Acre	Rental	Oil	Gas	Other



TRACT 40989 - Jefferson Parish, Louisiana

All of the lands now or formerly constituting the beds and bottoms of all water bodies of every nature and description as to which title is vested in the State of Louisiana, together with all islands arising therein and other lands formed by accretion or by reliction, where allowed by law, excepting tax adjudicated lands, and not presently under mineral lease on May 13, 2009, situated in Jefferson Parish, Louisiana, and more particularly described as follows: Beginning at the Southwest corner of State Lease No. 15744, as amended, having Coordinates of X = 2,431,127.83 and Y = 268,570.00; thence East along the South line of State Lease No. 15744, as amended, a distance of 4,004.19 feet to its Southeast corner having Coordinates of X = 2,435,132.02 and Y = 268,570.00, said point also lying on the West line of State Lease No. 19671; thence South along the West line of State Lease No. 19671 a distance of 809.87 feet to its Southwest corner having Coordinates of X = 2,435,132.02 and Y = 267,760.13; thence, East along the South line of State Lease No. 19671 a distance of 4,050.53 feet to its Southeast corner having Coordinates of X = 2,439,182.55 and Y = 267,760.13, said point also being the Southwest corner of State Lease No. 19673; thence, South a distance of 6,200.00 feet to a point having Coordinates of X = 2,439,182.55 and Y = 261,560.13; thence West a distance of 8,054.72 feet to a point having Coordinates of X = 2,431,127.83 and Y = 261,560.13; thence North a distance of 7,009.87 feet to a point having Coordinates of X = 2,431,127.83 and Y = 268,570.00, said point being the point of beginning, containing approximately **1220.89 acres**, all as more particularly outlined on a plat on file in the Office of Mineral Resources, Department of Natural Resources. All bearings, distances and coordinates are based on Louisiana Coordinate System of 1927, (North or South Zone), where applicable.

NOTE: The above description of the Tract nominated for lease has been provided and corrected, where required, exclusively by the nomination party. Any mineral lease selected from this Tract and awarded by the Louisiana State Mineral Board shall be without warranty of any kind, either express, implied, or statutory, including, but not limited to, the implied warranties of merchantability and fitness for a particular purpose. Should the mineral lease awarded by the Louisiana State Mineral Board be subsequently modified, cancelled or abrogated due to the existence of conflicting leases, operating agreements, private claims or other future obligations or conditions which may affect all or any portion of the leased Tract, it shall not relieve the Lessee of the obligation to pay any bonus due thereon to the Louisiana State Mineral Board, nor shall the Louisiana State Mineral Board be obligated to refund any consideration paid by the Lessor prior to such modification, cancellation, or abrogation, including, but not limited to, bonuses, rentals and royalties.

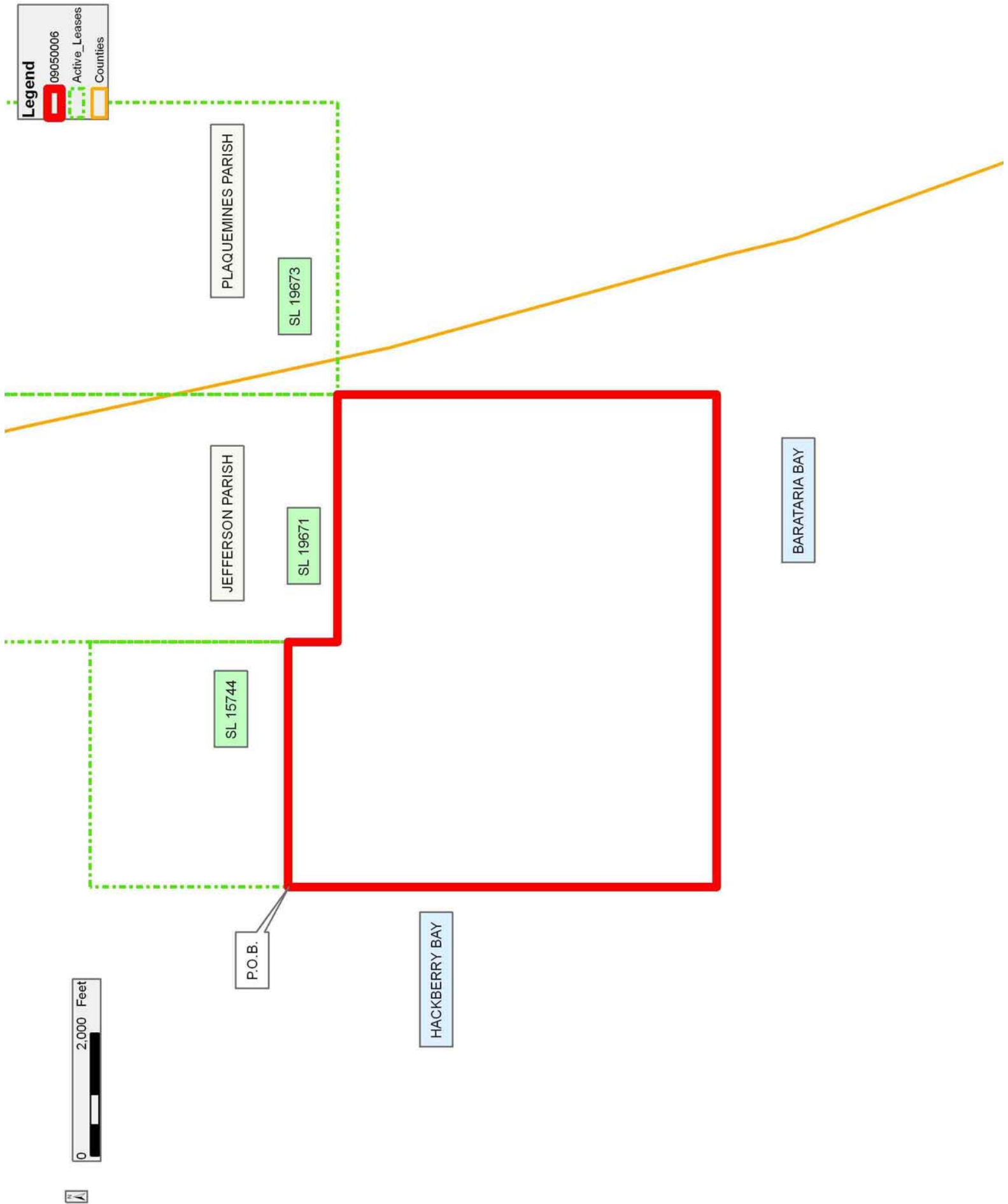
NOTE: The State of Louisiana does hereby reserve, and this lease shall be subject to, the imprescriptible right of surface use in the nature of a servitude in favor of the Department of Natural Resources, including its Offices and Commissions, for the sole purpose of implementing,

constructing, servicing and maintaining approved coastal zone management and/or restoration projects. Utilization of any and all rights derived under this lease by the mineral lessee, its agents, successors or assigns, shall not interfere with nor hinder the reasonable surface use by the Department of Natural Resources, its Offices or Commissions, as herein above reserved.

NOTE: The Department of Wildlife and Fisheries has designated certain areas in the coastal waters of the State of Louisiana as Oyster Seed Bed Areas. The exact location of those Seed Bed Areas must be obtained from the Department of Wildlife and Fisheries and any work done under a mineral lease from the State of Louisiana may necessarily be conducted in conformity with the rules and regulations promulgated by the said Department of Wildlife and Fisheries for Oyster Seed Bed Areas.

Applicant: LANDSOLUTIONS, INC.

Bidder	Cash Payment	Price/ Acre	Rental	Oil	Gas	Other



TRACT 40990 - Jefferson and Plaquemines Parishes, Louisiana

All of the lands now or formerly constituting the beds and bottoms of all water bodies of every nature and description as to which title is vested in the State of Louisiana, together with all islands arising therein and other lands formed by accretion or by reliction, where allowed by law, excepting tax adjudicated lands, and not presently under mineral lease on May 13, 2009, situated in Jefferson and Plaquemines Parishes, Louisiana, and more particularly described as follows: Beginning at the Southwest corner of State Lease No. 19673, having Coordinates of X = 2,439,182.55 and Y = 267,760.13; thence East along the South line of State Lease No. 19673 a distance of 4,770.00 feet to its Southeast corner having Coordinates of X = 2,443,952.55 and Y = 267,760.13, said point also being the Southwest corner of State Lease No. 19672; thence East along the South line of State Lease No. 19672 a distance of 4,020.23 feet to a point having Coordinates of X = 2,447,972.78 and Y = 267,760.13; thence South a distance of 6,200.00 feet to a point having Coordinates of X = 2,447,972.78 and Y = 261,560.13; thence West a distance of 8,790.23 feet to a point having Coordinates of X = 2,439,182.55 and Y = 261,560.13; thence North a distance of 6,200 feet to a point having Coordinates of X = 2,439,182.55 and Y = 267,760.13, said point being the point of beginning, containing approximately **1251.13 acres**, all as more particularly outlined on a plat on file in the Office of Mineral Resources, Department of Natural Resources. All bearings, distances and coordinates are based on Louisiana Coordinate System of 1927, (North or South Zone), where applicable.

NOTE: The above description of the Tract nominated for lease has been provided and corrected, where required, exclusively by the nomination party. Any mineral lease selected from this Tract and awarded by the Louisiana State Mineral Board shall be without warranty of any kind, either express, implied, or statutory, including, but not limited to, the implied warranties of merchantability and fitness for a particular purpose. Should the mineral lease awarded by the Louisiana State Mineral Board be subsequently modified, cancelled or abrogated due to the existence of conflicting leases, operating agreements, private claims or other future obligations or conditions which may affect all or any portion of the leased Tract, it shall not relieve the Lessee of the obligation to pay any bonus due thereon to the Louisiana State Mineral Board, nor shall the Louisiana State Mineral Board be obligated to refund any consideration paid by the Lessor prior to such modification, cancellation, or abrogation, including, but not limited to, bonuses, rentals and royalties.

NOTE: The State of Louisiana does hereby reserve, and this lease shall be subject to, the imprescriptible right of surface use in the nature of a servitude in favor of the Department of Natural Resources, including its Offices and Commissions, for the sole purpose of implementing, constructing, servicing and maintaining approved coastal zone management and/or restoration projects. Utilization of any and all rights derived under this lease by the mineral lessee, its agents, successors or assigns,

shall not interfere with nor hinder the reasonable surface use by the Department of Natural Resources, its Offices or Commissions, as herein above reserved.

NOTE: The Department of Wildlife and Fisheries has designated certain areas in the coastal waters of the State of Louisiana as Oyster Seed Bed Areas. The exact location of those Seed Bed Areas must be obtained from the Department of Wildlife and Fisheries and any work done under a mineral lease from the State of Louisiana may necessarily be conducted in conformity with the rules and regulations promulgated by the said Department of Wildlife and Fisheries for Oyster Seed Bed Areas.

Applicant: LANDSOLUTIONS, INC.

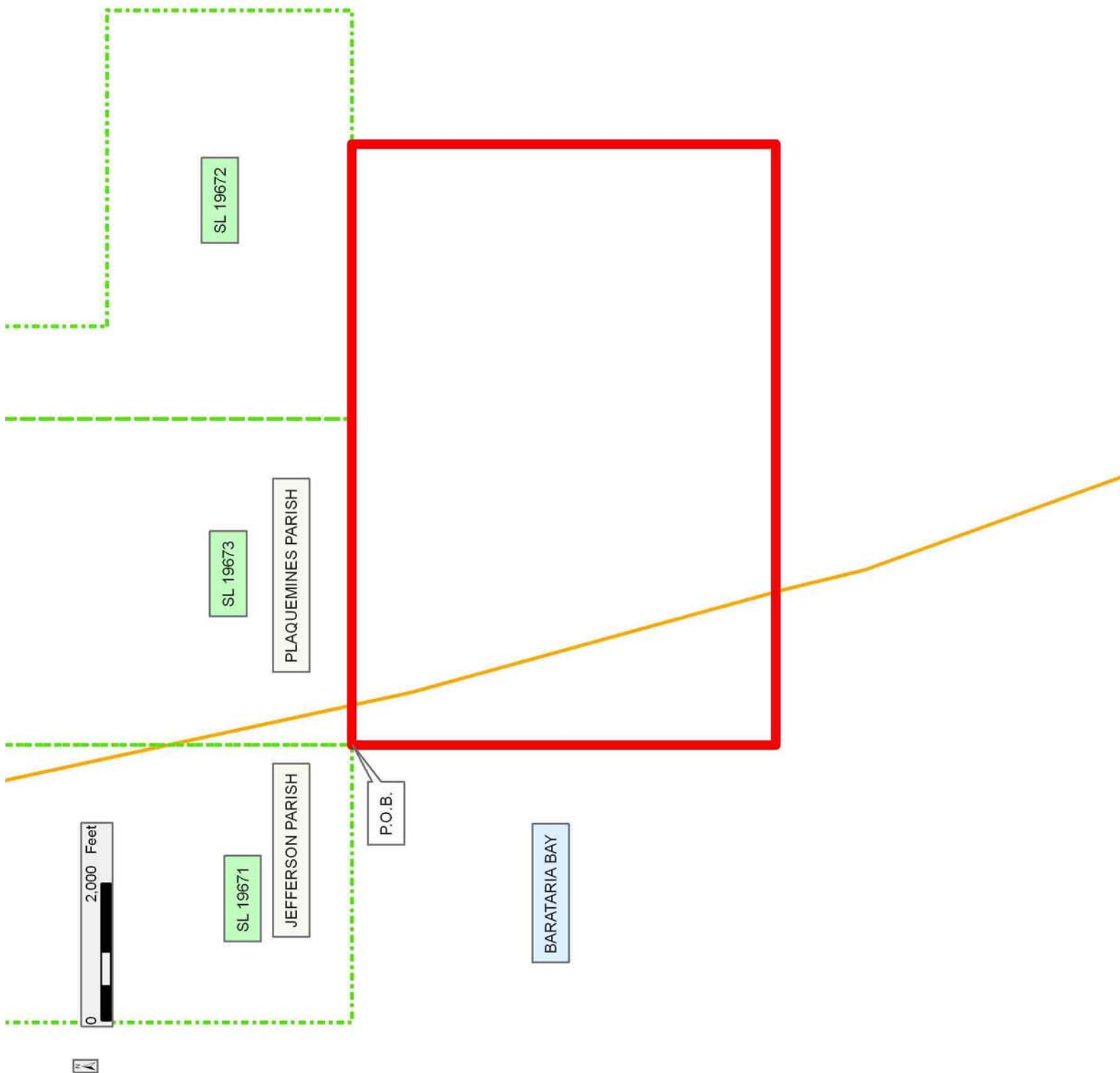
Bidder	Cash Payment	Price/ Acre	Rental	Oil	Gas	Other

Legend

09050007

Active_Leases

Counties



TRACT 40991 - Plaquemines Parish, Louisiana

All of the lands now or formerly constituting the beds and bottoms of all water bodies of every nature and description as to which title is vested in the State of Louisiana, together with all islands arising therein and other lands formed by accretion or by reliction, where allowed by law, excepting tax adjudicated lands, and not presently under mineral lease on May 13, 2009, situated in Plaquemines Parish, Louisiana, and more particularly described as follows: Beginning at a point on the South line of State Lease No. 19672 having Coordinates of X = 2,447,972.78 and Y = 267,760.13; thence East along the South line of State Lease No. 19672 a distance of 1,949.22 feet to its Southeast corner having Coordinates of X = 2,449,922.00 and Y = 267,760.13, said point also being the Southwest corner of State Lease No. 19670; thence East along the South line of State Lease No. 19670 a distance of 3,960 feet to its Southeast corner having Coordinates of X = 2,453,882.00 and Y = 267,760.13; thence East a distance of 3,000.00 feet to a point having Coordinates of X = 2,456,882.00 and Y = 267,760.13; thence South a distance of 6,200.00 feet to a point having Coordinates of X = 2,456,882.00 and Y = 261,560.13; thence West a distance of 8,909.22 feet to a point having Coordinates of X = 2,447,972.78 and Y = 261,560.13; thence North a distance of 6,200 feet to a point having Coordinates of X = 2,447,972.78 and Y = 267,760.13, said point being the point of beginning, containing approximately **1268.07 acres**, all as more particularly outlined on a plat on file in the Office of Mineral Resources, Department of Natural Resources. All bearings, distances and coordinates are based on Louisiana Coordinate System of 1927, (North or South Zone), where applicable.

NOTE: The above description of the Tract nominated for lease has been provided and corrected, where required, exclusively by the nomination party. Any mineral lease selected from this Tract and awarded by the Louisiana State Mineral Board shall be without warranty of any kind, either express, implied, or statutory, including, but not limited to, the implied warranties of merchantability and fitness for a particular purpose. Should the mineral lease awarded by the Louisiana State Mineral Board be subsequently modified, cancelled or abrogated due to the existence of conflicting leases, operating agreements, private claims or other future obligations or conditions which may affect all or any portion of the leased Tract, it shall not relieve the Lessee of the obligation to pay any bonus due thereon to the Louisiana State Mineral Board, nor shall the Louisiana State Mineral Board be obligated to refund any consideration paid by the Lessor prior to such modification, cancellation, or abrogation, including, but not limited to, bonuses, rentals and royalties.

NOTE: The State of Louisiana does hereby reserve, and this lease shall be subject to, the imprescriptible right of surface use in the nature of a servitude in favor of the Department of Natural Resources, including its Offices and Commissions, for the sole purpose of implementing, constructing, servicing and maintaining approved coastal zone management and/or restoration projects. Utilization of any and all rights derived

under this lease by the mineral lessee, its agents, successors or assigns, shall not interfere with nor hinder the reasonable surface use by the Department of Natural Resources, its Offices or Commissions, as herein above reserved.

NOTE: The Department of Wildlife and Fisheries has designated certain areas in the coastal waters of the State of Louisiana as Oyster Seed Bed Areas. The exact location of those Seed Bed Areas must be obtained from the Department of Wildlife and Fisheries and any work done under a mineral lease from the State of Louisiana may necessarily be conducted in conformity with the rules and regulations promulgated by the said Department of Wildlife and Fisheries for Oyster Seed Bed Areas.

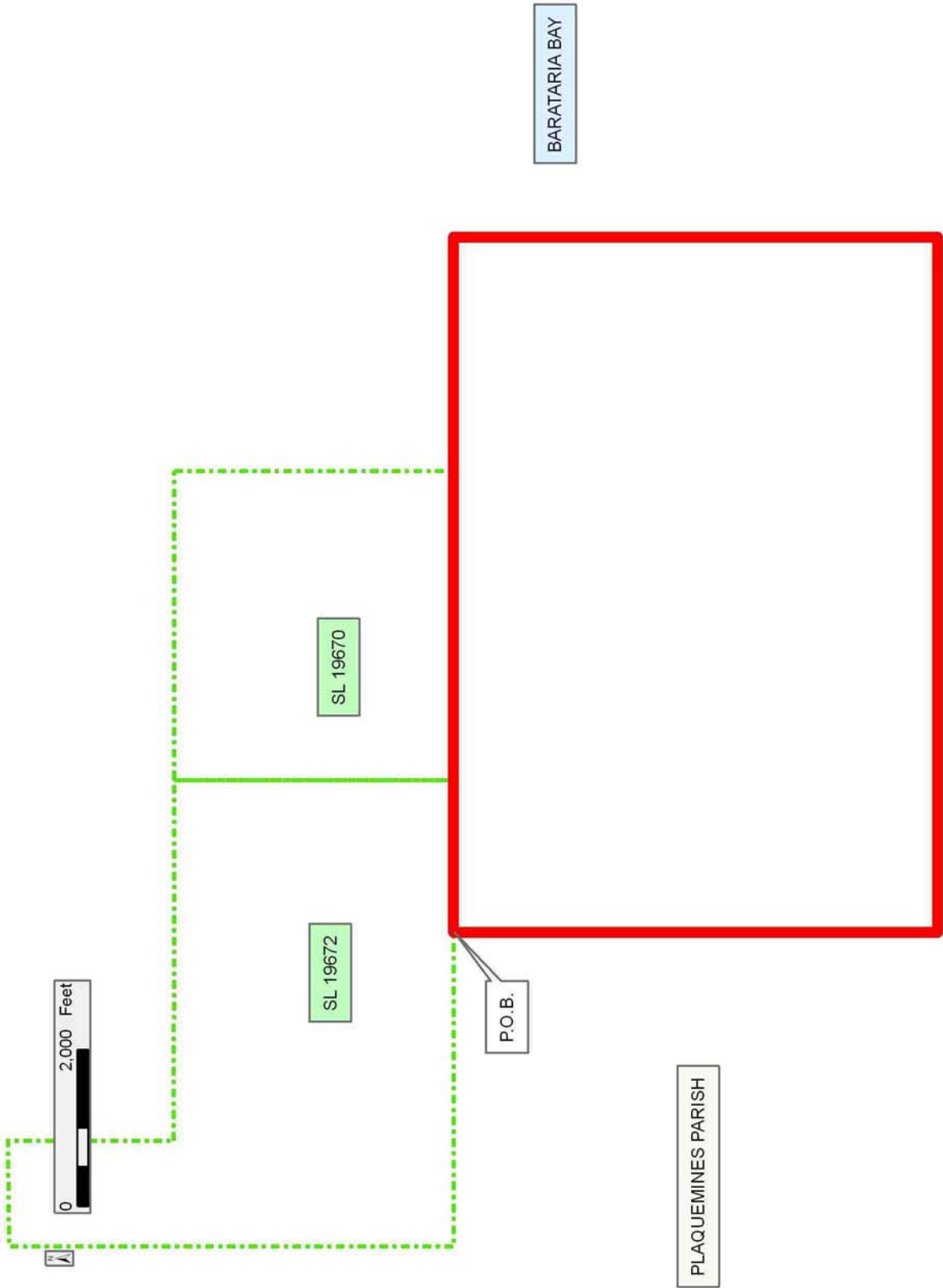
Applicant: LANDSOLUTIONS, INC.

Bidder	Cash Payment	Price/ Acre	Rental	Oil	Gas	Other

Legend

09050008

Active Leases



TRACT 40992 - Lafourche and Terrebonne Parishes, Louisiana

All of the lands now or formerly constituting the beds and bottoms of all water bodies of every nature and description as to which title is vested in the State of Louisiana, together with all islands arising therein and other lands formed by accretion or by reliction, where allowed by law, excepting tax adjudicated lands, and not presently under mineral lease on May 13, 2009, situated in Lafourche and Terrebonne Parishes, Louisiana, and more particularly described as follows: Beginning at a point having Coordinates of X = 2,272,500.00 feet and Y = 269,057.15 feet; thence East 18,000.00 feet to a point having Coordinates of X = 2,290,500.00 feet and Y = 269,057.15 feet; thence South 15,457.15 feet to a point having Coordinates of X = 2,290,500.00 feet and Y = 253,600.00 feet; thence West 18,000.00 feet to a point having Coordinates of X = 2,272,500.00 feet and Y = 253,600.50 feet; thence North 15,457.15 feet to the point of beginning, containing approximately **320 acres**, all as more particularly outlined on a plat on file in the Office of Mineral Resources, Department of Natural Resources. All bearings, distances and coordinates are based on Louisiana Coordinate System of 1927, (North or South Zone), where applicable.

NOTE: The above description of the Tract nominated for lease has been provided and corrected, where required, exclusively by the nomination party. Any mineral lease selected from this Tract and awarded by the Louisiana State Mineral Board shall be without warranty of any kind, either express, implied, or statutory, including, but not limited to, the implied warranties of merchantability and fitness for a particular purpose. Should the mineral lease awarded by the Louisiana State Mineral Board be subsequently modified, cancelled or abrogated due to the existence of conflicting leases, operating agreements, private claims or other future obligations or conditions which may affect all or any portion of the leased Tract, it shall not relieve the Lessee of the obligation to pay any bonus due thereon to the Louisiana State Mineral Board, nor shall the Louisiana State Mineral Board be obligated to refund any consideration paid by the Lessor prior to such modification, cancellation, or abrogation, including, but not limited to, bonuses, rentals and royalties.

NOTE: The State of Louisiana does hereby reserve, and this lease shall be subject to, the imprescriptible right of surface use in the nature of a servitude in favor of the Department of Natural Resources, including its Offices and Commissions, for the sole purpose of implementing, constructing, servicing and maintaining approved coastal zone management and/or restoration projects. Utilization of any and all rights derived under this lease by the mineral lessee, its agents, successors or assigns, shall not interfere with nor hinder the reasonable surface use by the Department of Natural Resources, its Offices or Commissions, as herein above reserved.

NOTE: The Department of Wildlife and Fisheries has designated certain areas in the coastal waters of the State of Louisiana as Oyster Seed Bed

Areas. The exact location of those Seed Bed Areas must be obtained from the Department of Wildlife and Fisheries and any work done under a mineral lease from the State of Louisiana may necessarily be conducted in conformity with the rules and regulations promulgated by the said Department of Wildlife and Fisheries for Oyster Seed Bed Areas.

Applicant: SPECTER EXPLORATION, INC.

Bidder	Cash Payment	Price/ Acre	Rental	Oil	Gas	Other

TRACT 40993 - Lafourche and Terrebonne Parishes, Louisiana

All of the lands now or formerly constituting the beds and bottoms of all water bodies of every nature and description as to which title is vested in the State of Louisiana, together with all islands arising therein and other lands formed by accretion or by reliction, where allowed by law, excepting tax adjudicated lands, and not presently under mineral lease on May 13, 2009, situated in Lafourche and Terrebonne Parishes, Louisiana, and more particularly described as follows: Beginning at a point having Coordinates of X = 2,302,118.26 and Y = 264,909.79; thence East approximately 2,851 feet to a point on the West line of State Lease No. 378, as amended; thence South along the West line of said State Lease No. 378 approximately 11,104 feet to the Southwest corner of State Lease No. 378, as amended, thence Westerly approximately 500 feet to a point having Coordinates of X = 2,304,688.36 and Y = 253,807.21; thence West 9,188.36 feet to a point having Coordinates of X = 2,295,500.00 and Y = 253,807.21; thence North 9,308.38 feet to a point having Coordinates of X = 2,295,500.00 and Y = 263,115.59; thence East 6,618.26 feet to a point having Coordinates of X = 2,302,118.26 and Y = 263,115.59; thence North 1,794.20 feet to the point of beginning, containing approximately **205 acres**, , all as more particularly outlined on a plat on file in the Office of Mineral Resources, Department of Natural Resources. All bearings, distances and coordinates are based on Louisiana Coordinate System of 1927, (North or South Zone), where applicable.

NOTE: The above description of the Tract nominated for lease has been provided and corrected, where required, exclusively by the nomination party. Any mineral lease selected from this Tract and awarded by the Louisiana State Mineral Board shall be without warranty of any kind, either express, implied, or statutory, including, but not limited to, the implied warranties of merchantability and fitness for a particular purpose. Should the mineral lease awarded by the Louisiana State Mineral Board be subsequently modified, cancelled or abrogated due to the existence of conflicting leases, operating agreements, private claims or other future obligations or conditions which may affect all or any portion of the leased Tract, it shall not relieve the Lessee of the obligation to pay any bonus due thereon to the Louisiana State Mineral Board, nor shall the Louisiana State Mineral Board be obligated to refund any consideration paid by the Lessor prior to such modification, cancellation, or abrogation, including, but not limited to, bonuses, rentals and royalties.

NOTE: The State of Louisiana does hereby reserve, and this lease shall be subject to, the imprescriptible right of surface use in the nature of a servitude in favor of the Department of Natural Resources, including its Offices and Commissions, for the sole purpose of implementing, constructing, servicing and maintaining approved coastal zone management and/or restoration projects. Utilization of any and all rights derived under this lease by the mineral lessee, its agents, successors or assigns, shall not interfere with nor hinder the reasonable surface use by the

Department of Natural Resources, its Offices or Commissions, as herein above reserved.

NOTE: The Department of Wildlife and Fisheries has designated certain areas in the coastal waters of the State of Louisiana as Oyster Seed Bed Areas. The exact location of those Seed Bed Areas must be obtained from the Department of Wildlife and Fisheries and any work done under a mineral lease from the State of Louisiana may necessarily be conducted in conformity with the rules and regulations promulgated by the said Department of Wildlife and Fisheries for Oyster Seed Bed Areas.

Applicant: SPECTER EXPLORATION, INC.

Bidder	Cash Payment	Price/ Acre	Rental	Oil	Gas	Other

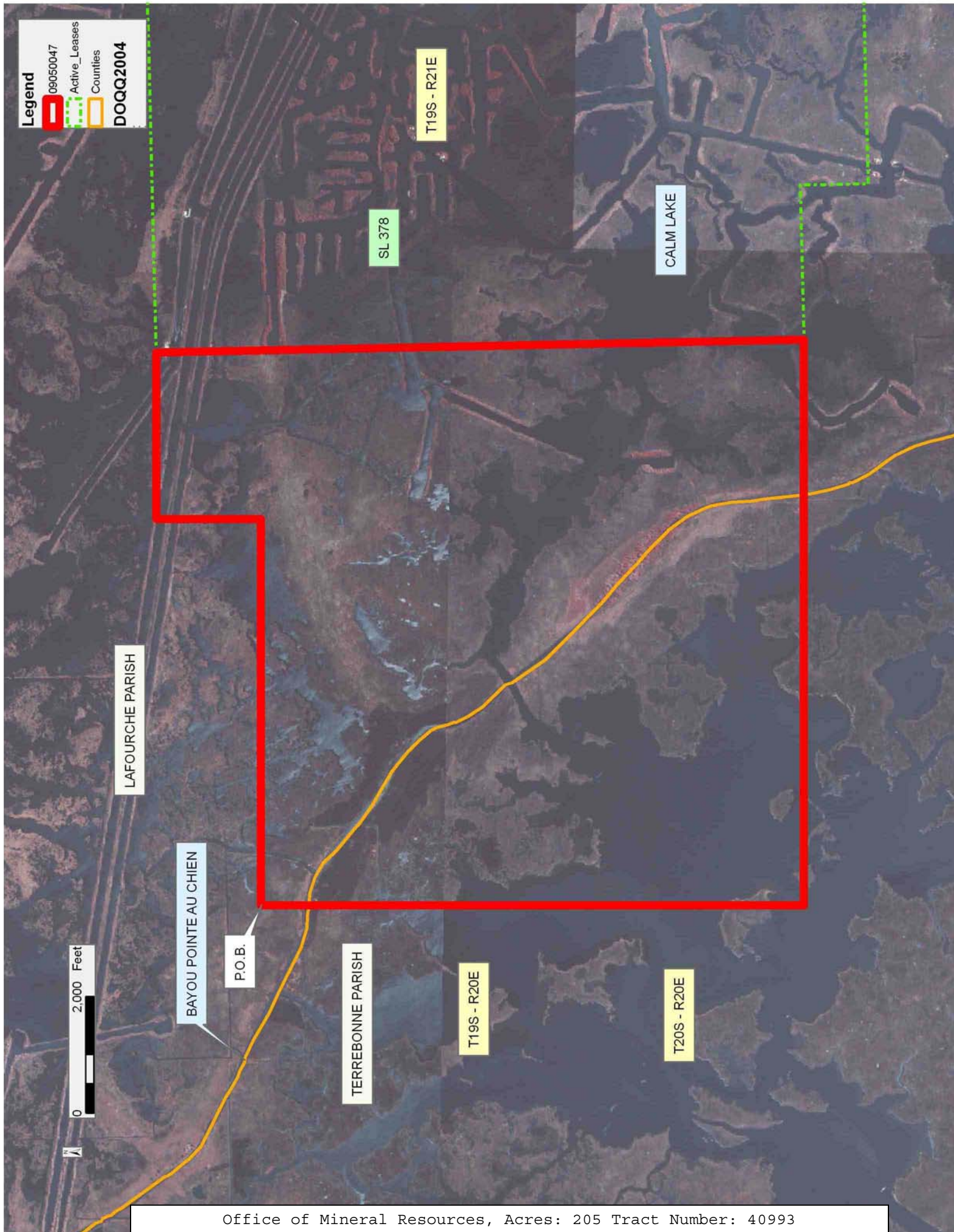
Legend

09050047

Active_Leases

Counties

DOQQ2004



TRACT 40994 - Terrebonne Parish, Louisiana

All of the lands now or formerly constituting the beds and bottoms of all water bodies of every nature and description as to which title is vested in the State of Louisiana, together with all islands arising therein and other lands formed by accretion or by reliction, where allowed by law, excepting tax adjudicated lands, and not presently under mineral lease on May 13, 2009, situated in Terrebonne Parish, Louisiana, and more particularly described as follows: Beginning at a point having Coordinates of X = 2,261,000.00 feet and Y = 263,294.87 feet; thence East 6,788.53 feet to a point at the Northwest corner of State Lease No. 18871, Parcel A, as amended, having Coordinates of X = 2,267,788.53 feet and Y = 263,294.87 feet; thence South 1,543.69 feet to a point at the Southwest corner of said State Lease No. 18871, Parcel A, as amended, having Coordinates of X = 2,267,788.53 feet and Y = 261,751.18 feet; along the Southern boundary of said State Lease No. 18871, Parcel A, as amended, thence North 68 Degrees 59 Minutes 51 Seconds East 185.65 feet; thence along a curve to the right having a radius of 6,500.00 feet, an arc length of 826.86 feet, and a long chord of North 72 Degrees 15 Minutes 37 Seconds East 826.30 feet; thence along a curve to the right having a radius of 6,500.00 feet, an arc length of 839.32 feet, and a long chord of North 77 Degrees 49 Minutes 40 Seconds East 838.74 feet; thence along a curve to the right having a radius of 5,500.00 feet, an arc length of 691.86 feet, and a long chord of North 83 Degrees 57 Minutes 32 Seconds East 691.40 feet; thence North 88 Degrees 15 Minutes 45 Seconds East 1,277.82 feet to a point at the Southeast corner of said State Lease No. 18871, Parcel A, as amended, having Coordinates of X = 2,271,533.53 feet and Y = 262,357.85 feet; thence North 937.02 feet to a point at the Northeast corner of said State Lease No. 18871, Parcel A, as amended, having Coordinates of X = 2,271,533.53 feet and Y = 263,294.87 feet; thence East 966.47 feet to a point having Coordinates of X = 2,272,500.00 feet and Y = 263,294.87 feet; thence South 5,000.00 feet to a point having Coordinates of X = 2,272,500.00 feet and Y = 258,294.87 feet; thence West 11,500.00 feet to a point having Coordinates of X = 2,261,000.00 feet and Y = 258,294.87 feet; thence North 5,000.00 feet to the point of beginning, **LESS AND EXCEPT** all of that portion of State Lease No. 18871, Parcel B, as amended, that may lie within the above described tract, being more particularly described as follows: Beginning at a point being the Point of Beginning of said nominated tract having Coordinates of X = 2,261,000.00 and Y = 263,294.87; thence South 79 Degrees 18 Minutes 50 Seconds East 8,439.97 feet to a point being the Point of Beginning of Parcel B of said State Lease No. 18871 having Coordinates of X = 2,269,293.60 feet and Y = 261,729.85 feet; thence North 88 Degrees 07 Minutes 47 Seconds East 1,319.16 feet to a point having Coordinates of X = 2,270,612.06 feet and Y = 261,772.90 feet; thence South 17 Degrees 48 Minutes 25 Seconds East 302.34 feet to a point having Coordinates of X = 2,270,704.52 feet and Y = 261,485.05 feet; thence North 69 Degrees 58 Minutes 23 Seconds East 458.04 feet to a point having Coordinates of X = 2,271,134.86 feet and Y = 261,641.91 feet; thence North 06 Degrees 25 Minutes 05 Seconds West 148.45 feet to a point having Coordinates of X = 2,271,118.27 feet and Y = 261,789.43 feet;

thence North 88 Degrees 07 Minutes 47 Seconds East 415.48 feet to a point having Coordinates of X = 2,271,533.52 feet and Y = 261,802.99 feet; thence South 1,720.39 feet to a point having Coordinates of X = 2,271,533.53 feet and Y = 260,082.60 feet; thence South 88 Degrees 07 Minutes 47 Seconds West 2,184.98 feet to a point having Coordinates of X = 2,269,349.72 feet and Y = 260,011.29 feet; thence North 01 Degree 52 Minutes 13 Seconds West 1,719.47 feet to the point of beginning, the nominated tract containing approximately **10 acres**, all as more particularly outlined on a plat on file in the Office of Mineral Resources, Department of Natural Resources. All bearings, distances and coordinates are based on Louisiana Coordinate System of 1927, (North or South Zone), where applicable.

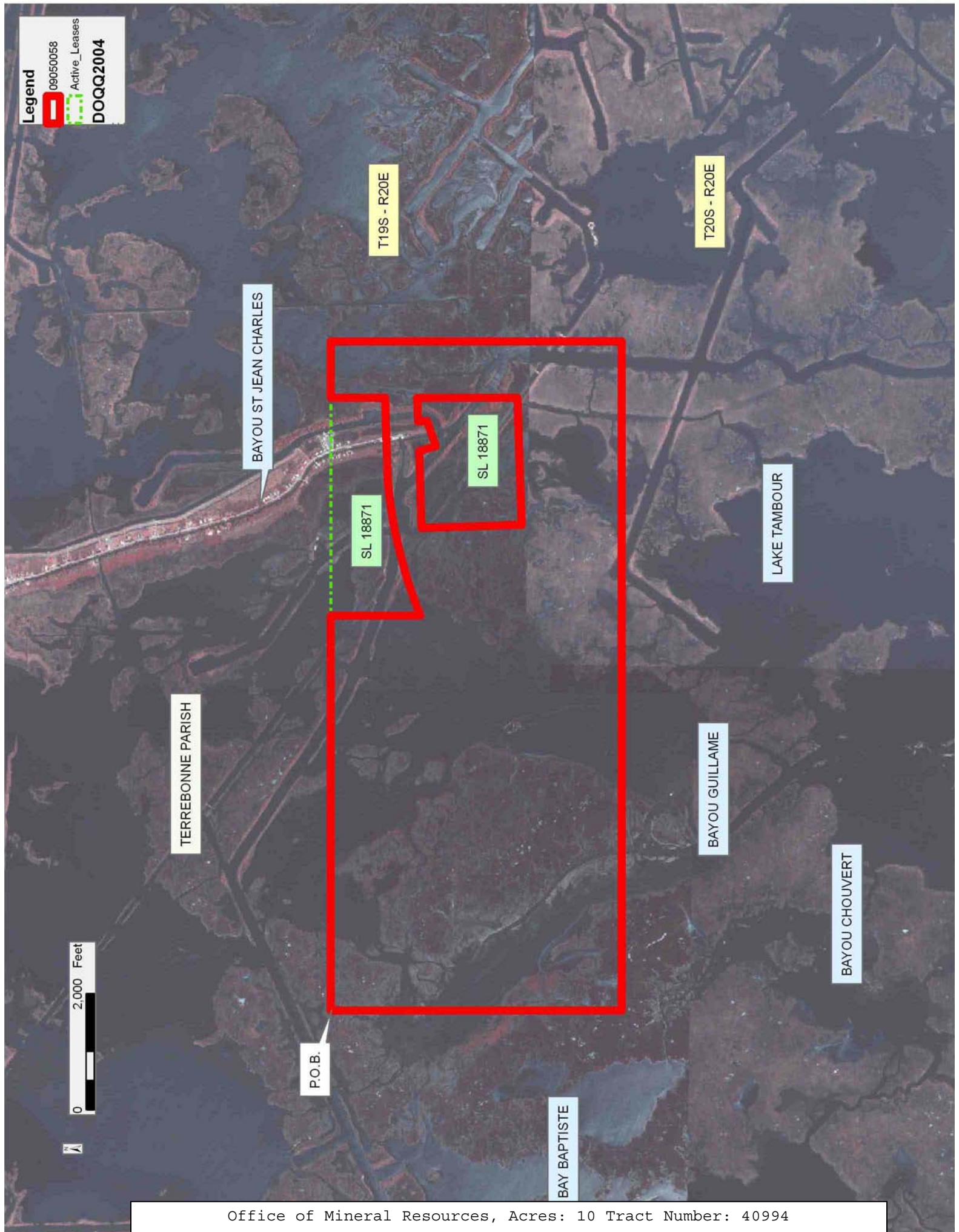
NOTE: The above description of the Tract nominated for lease has been provided and corrected, where required, exclusively by the nomination party. Any mineral lease selected from this Tract and awarded by the Louisiana State Mineral Board shall be without warranty of any kind, either express, implied, or statutory, including, but not limited to, the implied warranties of merchantability and fitness for a particular purpose. Should the mineral lease awarded by the Louisiana State Mineral Board be subsequently modified, cancelled or abrogated due to the existence of conflicting leases, operating agreements, private claims or other future obligations or conditions which may affect all or any portion of the leased Tract, it shall not relieve the Lessee of the obligation to pay any bonus due thereon to the Louisiana State Mineral Board, nor shall the Louisiana State Mineral Board be obligated to refund any consideration paid by the Lessor prior to such modification, cancellation, or abrogation, including, but not limited to, bonuses, rentals and royalties.

NOTE: The State of Louisiana does hereby reserve, and this lease shall be subject to, the imprescriptible right of surface use in the nature of a servitude in favor of the Department of Natural Resources, including its Offices and Commissions, for the sole purpose of implementing, constructing, servicing and maintaining approved coastal zone management and/or restoration projects. Utilization of any and all rights derived under this lease by the mineral lessee, its agents, successors or assigns, shall not interfere with nor hinder the reasonable surface use by the Department of Natural Resources, its Offices or Commissions, as herein above reserved.

Applicant: SPECTER EXPLORATION, INC.

Bidder	Cash Payment	Price/ Acre	Rental	Oil	Gas	Other

Legend
09050058
Active_Leases
DOQQ2004



TRACT 40995 - Lafourche and Terrebonne Parishes, Louisiana

All of the lands now or formerly constituting the beds and bottoms of all water bodies of every nature and description as to which title is vested in the State of Louisiana, together with all islands arising therein and other lands formed by accretion or by reliction, where allowed by law, excepting tax adjudicated lands, and not presently under mineral lease on May 13, 2009, situated in Lafourche and Terrebonne Parishes, Louisiana, and more particularly described as follows: Beginning at a point having Coordinates of X = 2,290,500.00 feet and Y = 255,300.00 feet; thence East 5,000.00 feet to a point having Coordinates of X = 2,295,500.00 feet and Y = 255,300.00 feet; thence South 1,492.79 feet to a point having Coordinates of X = 2,295,500.00 feet and Y = 253,807.21 feet; thence East 9,188.36 feet to a point having Coordinates of X = 2,304,688.36 feet and Y = 253,807.21 feet; thence South 12,207.21 feet to a point having Coordinates of X = 2,304,688.36 feet and Y = 241,600.00 feet; thence West 14,188.36 feet to a point having Coordinates of X = 2,290,500.00 feet and Y = 241,600.00 feet; thence North 13,700.00 feet to the point of beginning, containing approximately **834 acres**, all as more particularly outlined on a plat on file in the Office of Mineral Resources, Department of Natural Resources. All bearings, distances and coordinates are based on Louisiana Coordinate System of 1927, (North or South Zone), where applicable.

NOTE: The above description of the Tract nominated for lease has been provided and corrected, where required, exclusively by the nomination party. Any mineral lease selected from this Tract and awarded by the Louisiana State Mineral Board shall be without warranty of any kind, either express, implied, or statutory, including, but not limited to, the implied warranties of merchantability and fitness for a particular purpose. Should the mineral lease awarded by the Louisiana State Mineral Board be subsequently modified, cancelled or abrogated due to the existence of conflicting leases, operating agreements, private claims or other future obligations or conditions which may affect all or any portion of the leased Tract, it shall not relieve the Lessee of the obligation to pay any bonus due thereon to the Louisiana State Mineral Board, nor shall the Louisiana State Mineral Board be obligated to refund any consideration paid by the Lessor prior to such modification, cancellation, or abrogation, including, but not limited to, bonuses, rentals and royalties.

NOTE: The State of Louisiana does hereby reserve, and this lease shall be subject to, the imprescriptible right of surface use in the nature of a servitude in favor of the Department of Natural Resources, including its Offices and Commissions, for the sole purpose of implementing, constructing, servicing and maintaining approved coastal zone management and/or restoration projects. Utilization of any and all rights derived under this lease by the mineral lessee, its agents, successors or assigns, shall not interfere with nor hinder the reasonable surface use by the Department of Natural Resources, its Offices or Commissions, as herein above reserved.

NOTE: The Department of Wildlife and Fisheries has designated certain areas in the coastal waters of the State of Louisiana as Oyster Seed Bed Areas. The exact location of those Seed Bed Areas must be obtained from the Department of Wildlife and Fisheries and any work done under a mineral lease from the State of Louisiana may necessarily be conducted in conformity with the rules and regulations promulgated by the said Department of Wildlife and Fisheries for Oyster Seed Bed Areas.

Applicant: SPECTER EXPLORATION, INC.

Bidder	Cash Payment	Price/ Acre	Rental	Oil	Gas	Other

Legend
09050055
Counties
DOQQ2004

CALM LAKE

TERREBONNE PARISH

LAFOURCHE PARISH

BAY DU SOL

LAKE BILLIOT

BAY COURANT

BAYOU POINTEAU CHIEN

BAYOU JEAN LACROIX

LAKE FELICITY

P.O.B.

T19S - R20E

T20S - R20E

0 3,000 Feet