

TRACT 40976 - Jefferson Parish, Louisiana

All of the lands now or formerly constituting the beds and bottoms of all water bodies of every nature and description as to which title is vested in the State of Louisiana, together with all islands arising therein and other lands formed by accretion or by reliction, where allowed by law, excepting tax adjudicated lands, and not presently under mineral lease on May 13, 2009, situated in Jefferson Parish, Louisiana, and more particularly described as follows: Beginning at the Northwest corner of State Lease No. 19961, also being a point on the East boundary of State Lease No. 19038 having Coordinates of X = 2,394,200.00 and Y = 298,504.06; thence North 395.94 feet along the East boundary of said State Lease No. 19038 to its Northeast corner having Coordinates of X = 2,394,200.00 and Y = 298,900.00; thence North 6,307.46 feet to a point having Coordinates of X = 2,394,200.00 and Y = 305,207.46; thence East 7,395.65 feet to the Southernmost corner of State Lease No. 18727 having Coordinates of X = 2,401,595.65 and Y = 305,207.46; thence East 4,778.81 feet to a point having Coordinates of X = 2,406,374.45 and Y = 305,207.46; thence South 48 degrees 11 minutes 29 seconds East 8,449.41 feet to a point having Coordinates of X = 2,412,672.44 and Y = 299,574.71; thence South 1,070.66 feet to the Northeast corner of said State Lease No. 19961 having Coordinates of X = 2,412,672.44 and Y = 298,504.05; thence West 18,472.44 feet along the North boundary of said State Lease No. 19961 to the point of beginning, containing approximately **1,110 acres**, all as more particularly outlined on a plat on file in the Office of Mineral Resources, Department of Natural Resources. All bearings, distances and coordinates are based on Louisiana Coordinate System of 1927, (North or South Zone), where applicable.

NOTE: The above description of the Tract nominated for lease has been provided and corrected, where required, exclusively by the nomination party. Any mineral lease selected from this Tract and awarded by the Louisiana State Mineral Board shall be without warranty of any kind, either express, implied, or statutory, including, but not limited to, the implied warranties of merchantability and fitness for a particular purpose. Should the mineral lease awarded by the Louisiana State Mineral Board be subsequently modified, cancelled or abrogated due to the existence of conflicting leases, operating agreements, private claims or other future obligations or conditions which may affect all or any portion of the leased Tract, it shall not relieve the Lessee of the obligation to pay any bonus due thereon to the Louisiana State Mineral Board, nor shall the Louisiana State Mineral Board be obligated to refund any consideration paid by the Lessor prior to such modification, cancellation, or abrogation, including, but not limited to, bonuses, rentals and royalties.

NOTE: The State of Louisiana does hereby reserve, and this lease shall be subject to, the imprescriptible right of surface use in the nature of a servitude in favor of the Department of Natural Resources, including its Offices and Commissions, for the sole purpose of implementing, constructing, servicing and maintaining approved coastal zone management and/or restoration projects. Utilization of any and all rights derived

under this lease by the mineral lessee, its agents, successors or assigns, shall not interfere with nor hinder the reasonable surface use by the Department of Natural Resources, its Offices or Commissions, as herein above reserved.

NOTE: The Department of Wildlife and Fisheries has designated certain areas in the coastal waters of the State of Louisiana as Oyster Seed Bed Areas. The exact location of those Seed Bed Areas must be obtained from the Department of Wildlife and Fisheries and any work done under a mineral lease from the State of Louisiana may necessarily be conducted in conformity with the rules and regulations promulgated by the said Department of Wildlife and Fisheries for Oyster Seed Bed Areas.

Applicant: HAROLD J. ANDERSON, INC.

Bidder	Cash Payment	Price/ Acre	Rental	Oil	Gas	Other

Legend
09050026
Active_Leases
DOQQ2004

T18S - R24E

BAYOU ST DENIS

BAYOU DOSGRIS

SL 19961

GRAND BAYOU

SL 18727

JEFFERSON PARISH

P.O.B.

SL 19038



TRACT 40977 - Jefferson Parish, Louisiana

All of the lands now or formerly constituting the beds and bottoms of all water bodies of every nature and description as to which title is vested in the State of Louisiana, together with all islands arising therein and other lands formed by accretion or by reliction, where allowed by law, excepting tax adjudicated lands, and not presently under mineral lease on May 13, 2009, situated in Jefferson Parish, Louisiana, and more particularly described as follows: Beginning at a point having Coordinates of X = 2,414,949.62 and Y = 299,574.71; thence Northerly approximately 733 feet to the Southwest corner of State Lease No. 4192, as amended; thence along the boundary of said State Lease No. 4192 the following: Easterly approximately 2,640 feet; Northerly approximately 600 feet; Easterly approximately 1,000 feet; Northerly approximately 250 feet; Easterly approximately 3,610 feet and Northerly approximately 57 feet to the Southwest corner of State Lease No. 19282 having Coordinates of X = 2,422,199.62 and Y = 301,215.21; thence North 89 degrees 00 minutes 02 seconds East 1,702.83 feet along the South boundary of said State Lease No. 19282 to the Northwest corner of State Lease No. 19379 having Coordinates of X = 2,423,902.19 and Y = 301,244.92; thence South 1,404.60 feet along the West boundary of said State Lease No. 19379 to the Northwest corner of State Lease No. 19043, also being the Northeast corner of State Lease No. 19042 having Coordinates of X = 2,423,902.19 and Y = 299,840.31; thence along the boundary of said State Lease No. 19042 the following courses: North 89 degrees 43 minutes 37 seconds West 4,402.24 feet its Northwest corner having Coordinates of X = 2,419,500.00 and Y = 299,861.29 and South 9,047.46 feet to its Southwest corner, also being the Northwest corner of State Lease No. 19044 having Coordinates of X = 2,419,500.00 and Y = 290,813.83; thence South 1,613.83 feet along the West boundary of said State Lease No. 19044 to a point having Coordinates of X = 2,419,500.00 and Y = 289,200.00; thence West 4,100.00 feet to a point having Coordinates of X = 2,415,400.00 and Y = 289,200.00; thence North 10,374.71 feet to a point having Coordinates of X = 2,415,400.00 and Y = 299,574.71; thence West 450.38 feet to the point of beginning, **LESS AND EXCEPT** that portion, if any, of State Lease No. 4192, as amended, that may lie within the above described tract, (Above described tract includes only waterbottoms claimed and owned by the state and specifically excludes any land which the state may claim or own and to which the mineral rights are vested in the state), above described tract containing approximately **800 acres**, all as more particularly outlined on a plat on file in the Office of Mineral Resources, Department of Natural Resources. All bearings, distances and coordinates are based on Louisiana Coordinate System of 1927, (North or South Zone), where applicable.

NOTE: The above description of the Tract nominated for lease has been provided and corrected, where required, exclusively by the nomination party. Any mineral lease selected from this Tract and awarded by the Louisiana State Mineral Board shall be without warranty of any kind, either express, implied, or statutory, including, but not limited to, the implied warranties of merchantability and fitness for a particular

purpose. Should the mineral lease awarded by the Louisiana State Mineral Board be subsequently modified, cancelled or abrogated due to the existence of conflicting leases, operating agreements, private claims or other future obligations or conditions which may affect all or any portion of the leased Tract, it shall not relieve the Lessee of the obligation to pay any bonus due thereon to the Louisiana State Mineral Board, nor shall the Louisiana State Mineral Board be obligated to refund any consideration paid by the Lessor prior to such modification, cancellation, or abrogation, including, but not limited to, bonuses, rentals and royalties.

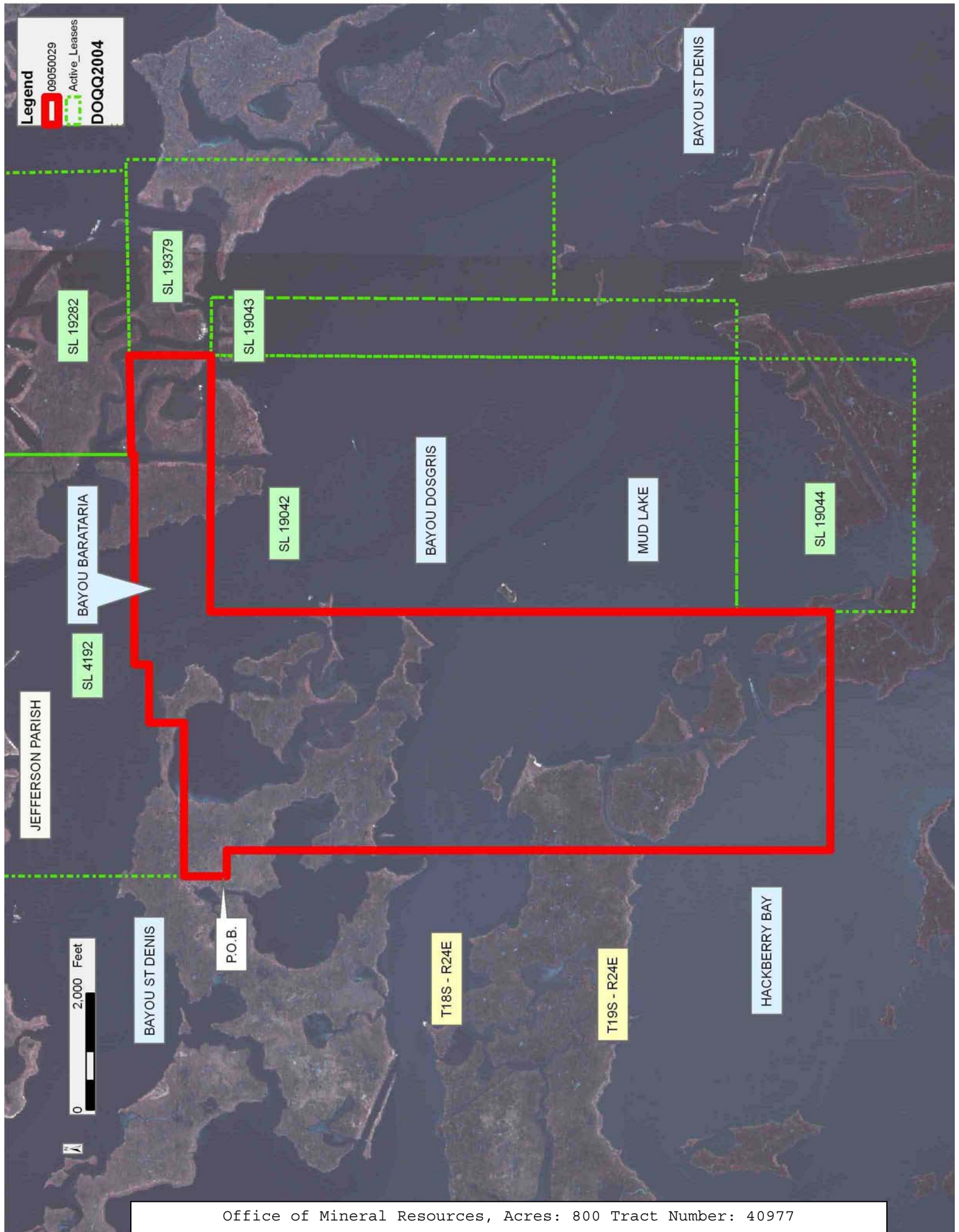
NOTE: The State of Louisiana does hereby reserve, and this lease shall be subject to, the imprescriptible right of surface use in the nature of a servitude in favor of the Department of Natural Resources, including its Offices and Commissions, for the sole purpose of implementing, constructing, servicing and maintaining approved coastal zone management and/or restoration projects. Utilization of any and all rights derived under this lease by the mineral lessee, its agents, successors or assigns, shall not interfere with nor hinder the reasonable surface use by the Department of Natural Resources, its Offices or Commissions, as herein above reserved.

NOTE: The Department of Wildlife and Fisheries has designated certain areas in the coastal waters of the State of Louisiana as Oyster Seed Bed Areas. The exact location of those Seed Bed Areas must be obtained from the Department of Wildlife and Fisheries and any work done under a mineral lease from the State of Louisiana may necessarily be conducted in conformity with the rules and regulations promulgated by the said Department of Wildlife and Fisheries for Oyster Seed Bed Areas.

Applicant: HAROLD J. ANDERSON, INC.

Bidder	Cash Payment	Price/ Acre	Rental	Oil	Gas	Other

Legend
09050029
Active_Leases
DOQQ2004



TRACT 40978 - Jefferson and Lafourche Parishes, Louisiana

All of the lands now or formerly constituting the beds and bottoms of all water bodies of every nature and description as to which title is vested in the State of Louisiana, together with all islands arising therein and other lands formed by accretion or by reliction, where allowed by law, excepting tax adjudicated lands, and not presently under mineral lease on May 13, 2009, situated in Jefferson and Lafourche Parishes, Louisiana, and more particularly described as follows: Beginning at a point having Coordinates of X = 2,412,672.44 and Y = 299,574.71; thence East 2,727.56 feet to a point having Coordinates of X = 2,415,400.00 and Y = 299,574.71; thence South 10,374.71 feet to a point having Coordinates of X = 2,415,400.00 and Y = 289,200.00; thence West 18,000.00 feet to a point having Coordinates of X = 2,397,400.00 and Y = 289,200.00; thence North 3,512.64 feet to a point on the South boundary of State Lease No. 19961 having Coordinates of X = 2,397,400.00 and Y = 292,712.64; thence along the boundary of said State Lease No. 19961 the following courses: East 15,272.44 feet to its Southeast corner having Coordinates of X = 2,412,672.44 and Y = 292,712.63 and North 5,791.42 feet to its Northeast corner having Coordinates of X = 2,412,672.44 and Y = 298,504.05; thence North 1,070.66 feet to the point of beginning, containing approximately **1,502 acres**, all as more particularly outlined on a plat on file in the Office of Mineral Resources, Department of Natural Resources. All bearings, distances and coordinates are based on Louisiana Coordinate System of 1927, (North or South Zone), where applicable.

NOTE: The above description of the Tract nominated for lease has been provided and corrected, where required, exclusively by the nomination party. Any mineral lease selected from this Tract and awarded by the Louisiana State Mineral Board shall be without warranty of any kind, either express, implied, or statutory, including, but not limited to, the implied warranties of merchantability and fitness for a particular purpose. Should the mineral lease awarded by the Louisiana State Mineral Board be subsequently modified, cancelled or abrogated due to the existence of conflicting leases, operating agreements, private claims or other future obligations or conditions which may affect all or any portion of the leased Tract, it shall not relieve the Lessee of the obligation to pay any bonus due thereon to the Louisiana State Mineral Board, nor shall the Louisiana State Mineral Board be obligated to refund any consideration paid by the Lessor prior to such modification, cancellation, or abrogation, including, but not limited to, bonuses, rentals and royalties.

NOTE: The State of Louisiana does hereby reserve, and this lease shall be subject to, the imprescriptible right of surface use in the nature of a servitude in favor of the Department of Natural Resources, including its Offices and Commissions, for the sole purpose of implementing, constructing, servicing and maintaining approved coastal zone management and/or restoration projects. Utilization of any and all rights derived under this lease by the mineral lessee, its agents, successors or assigns, shall not interfere with nor hinder the reasonable surface use by the

Department of Natural Resources, its Offices or Commissions, as herein above reserved.

NOTE: The Department of Wildlife and Fisheries has designated certain areas in the coastal waters of the State of Louisiana as Oyster Seed Bed Areas. The exact location of those Seed Bed Areas must be obtained from the Department of Wildlife and Fisheries and any work done under a mineral lease from the State of Louisiana may necessarily be conducted in conformity with the rules and regulations promulgated by the said Department of Wildlife and Fisheries for Oyster Seed Bed Areas.

Applicant: HAROLD J. ANDERSON, INC.

Bidder	Cash Payment	Price/ Acre	Rental	Oil	Gas	Other

Legend

- 09050028
- Active_Leases
- Counties
- DOQQ2004

BAYOU ST DENIS

P.O.B.

BAYOU DOSGRIS

T18S - R24E

T19S - R24E

OLD GRAND BAYOU

JEFFERSON PARISH

SL 19961

HACKBERRY BAY

GRAND BAYOU

LAFOURCHE PARISH

ST. JOSEPH BAY

0 2,000 Feet

TRACT 40979 - Jefferson and Lafourche Parishes, Louisiana

All of the lands now or formerly constituting the beds and bottoms of all water bodies of every nature and description as to which title is vested in the State of Louisiana, together with all islands arising therein and other lands formed by accretion or by reliction, where allowed by law, excepting tax adjudicated lands, and not presently under mineral lease on May 13, 2009, situated in Jefferson and Lafourche Parishes, Louisiana, and more particularly described as follows: Beginning at the Southwest corner of State Lease No. 18405 having Coordinates of X = 2,389,444.00 and Y = 289,489.00; thence along the boundary of said State Lease No. 18405 the following courses: East 4,543.00 feet to its Southeast corner having Coordinates of X = 2,393,987.00 and Y = 289,489.00 and North 2,168.00 feet to its Northeast corner, also being a point on the South boundary of State Lease No. 19040 having Coordinates of X = 2,393,987.00 and Y = 291,657.00; thence along the boundary of said State Lease No. 19040 the following courses: East 213.00 feet to its Southeast corner having Coordinates of X = 2,394,200.00 and Y = 291,657.00 and North 1,055.63 feet to the Southwest corner of State Lease No. 19961 having Coordinates of X = 2,394,200.00 and Y = 292,712.63; thence East 3,200.00 feet along the South boundary of said State Lease No. 19961 to a point having Coordinates of X = 2,397,400.00 and Y = 292,712.63; thence South 11,599.70 feet to a point having Coordinates of X = 2,397,400.00 and Y = 281,112.93; thence Easterly approximately 649 feet to the Northwest corner of State Lease No. 1217, as amended; thence Southerly approximately 2,975 feet along the West boundary of said State Lease No. 1217 to the Northeast corner of State Lease No. 19488 having a Coordinate of Y = 278,138.43; thence along the boundary of said State Lease No. 19488 the following courses: West approximately 2,987 feet to its Northwest corner having Coordinates of X = 2,395,063.48 and Y = 278,138.44 and South 326.44 feet to a point having Coordinates of X = 2,395,063.48 and Y = 277,812.00; thence West 5,619.48 feet to a point having Coordinates of X = 2,389.444.00 and Y = 277,812.00; thence North 11,677.00 feet to the point of beginning, **LESS AND EXCEPT** that portion, if any, of State Lease No. 1217, as amended, that may lie within the above described tract, containing approximately **944 acres**, all as more particularly outlined on a plat on file in the Office of Mineral Resources, Department of Natural Resources. All bearings, distances and coordinates are based on Louisiana Coordinate System of 1927, (North or South Zone), where applicable.

NOTE: The above description of the Tract nominated for lease has been provided and corrected, where required, exclusively by the nomination party. Any mineral lease selected from this Tract and awarded by the Louisiana State Mineral Board shall be without warranty of any kind, either express, implied, or statutory, including, but not limited to, the implied warranties of merchantability and fitness for a particular purpose. Should the mineral lease awarded by the Louisiana State Mineral Board be subsequently modified, cancelled or abrogated due to the existence of conflicting leases, operating agreements, private claims or other future obligations or conditions which may affect all or any portion

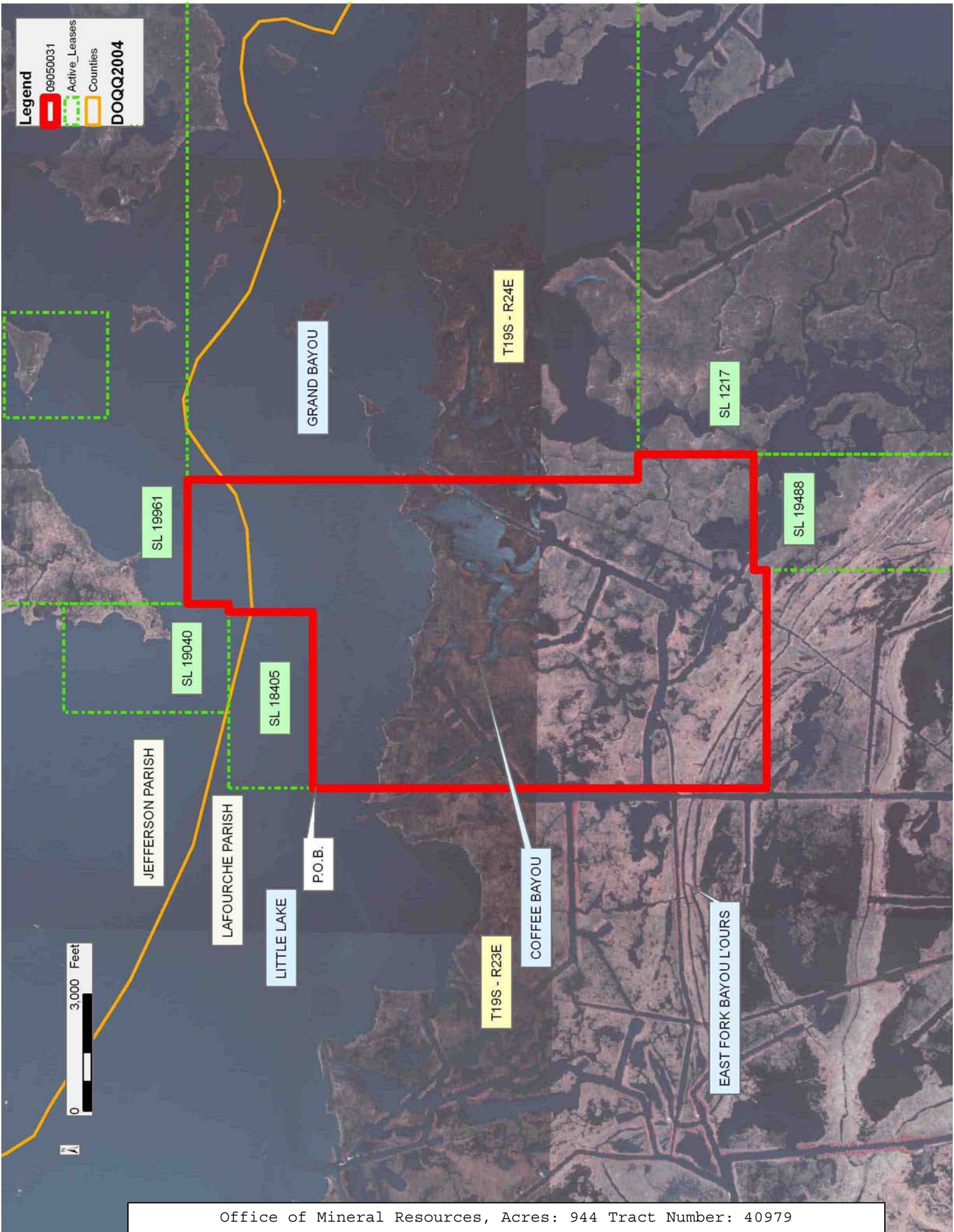
of the leased Tract, it shall not relieve the Lessee of the obligation to pay any bonus due thereon to the Louisiana State Mineral Board, nor shall the Louisiana State Mineral Board be obligated to refund any consideration paid by the Lessor prior to such modification, cancellation, or abrogation, including, but not limited to, bonuses, rentals and royalties.

NOTE: The State of Louisiana does hereby reserve, and this lease shall be subject to, the imprescriptible right of surface use in the nature of a servitude in favor of the Department of Natural Resources, including its Offices and Commissions, for the sole purpose of implementing, constructing, servicing and maintaining approved coastal zone management and/or restoration projects. Utilization of any and all rights derived under this lease by the mineral lessee, its agents, successors or assigns, shall not interfere with nor hinder the reasonable surface use by the Department of Natural Resources, its Offices or Commissions, as herein above reserved.

NOTE: The Department of Wildlife and Fisheries has designated certain areas in the coastal waters of the State of Louisiana as Oyster Seed Bed Areas. The exact location of those Seed Bed Areas must be obtained from the Department of Wildlife and Fisheries and any work done under a mineral lease from the State of Louisiana may necessarily be conducted in conformity with the rules and regulations promulgated by the said Department of Wildlife and Fisheries for Oyster Seed Bed Areas.

Applicant: HAROLD J. ANDERSON, INC.

Bidder	Cash Payment	Price/ Acre	Rental	Oil	Gas	Other



TRACT 40980 - Jefferson and Lafourche Parishes, Louisiana

All of the lands now or formerly constituting the beds and bottoms of all water bodies of every nature and description as to which title is vested in the State of Louisiana, together with all islands arising therein and other lands formed by accretion or by reliction, where allowed by law, excepting tax adjudicated lands, and not presently under mineral lease on May 13, 2009, situated in Jefferson and Lafourche Parishes, Louisiana, and more particularly described as follows: Beginning at a point having Coordinates of X = 2,415,400.00 and Y = 289,200.00; thence South approximately 8,087 feet to a point on the North boundary of State Lease No. 1217, as amended, having a Coordinate of X = 2,415,400.00; thence Westerly approximately 17,351 feet along the North boundary of said State Lease No. 1217 to its Northwest corner; thence Westerly approximately 649 feet to a point having Coordinates of X = 2,397,400.00 and Y = 281,112.93; thence North 8,087.07 feet to a point having Coordinates of X = 2,397,400.00 and Y = 289,200.00; thence East 18,000.00 feet to the point of beginning, **LESS AND EXCEPT** that portion, if any, of State Lease No. 1217, as amended, that may lie within the above described tract, containing approximately **2,261 acres**, all as more particularly outlined on a plat on file in the Office of Mineral Resources, Department of Natural Resources. All bearings, distances and coordinates are based on Louisiana Coordinate System of 1927, (North or South Zone), where applicable.

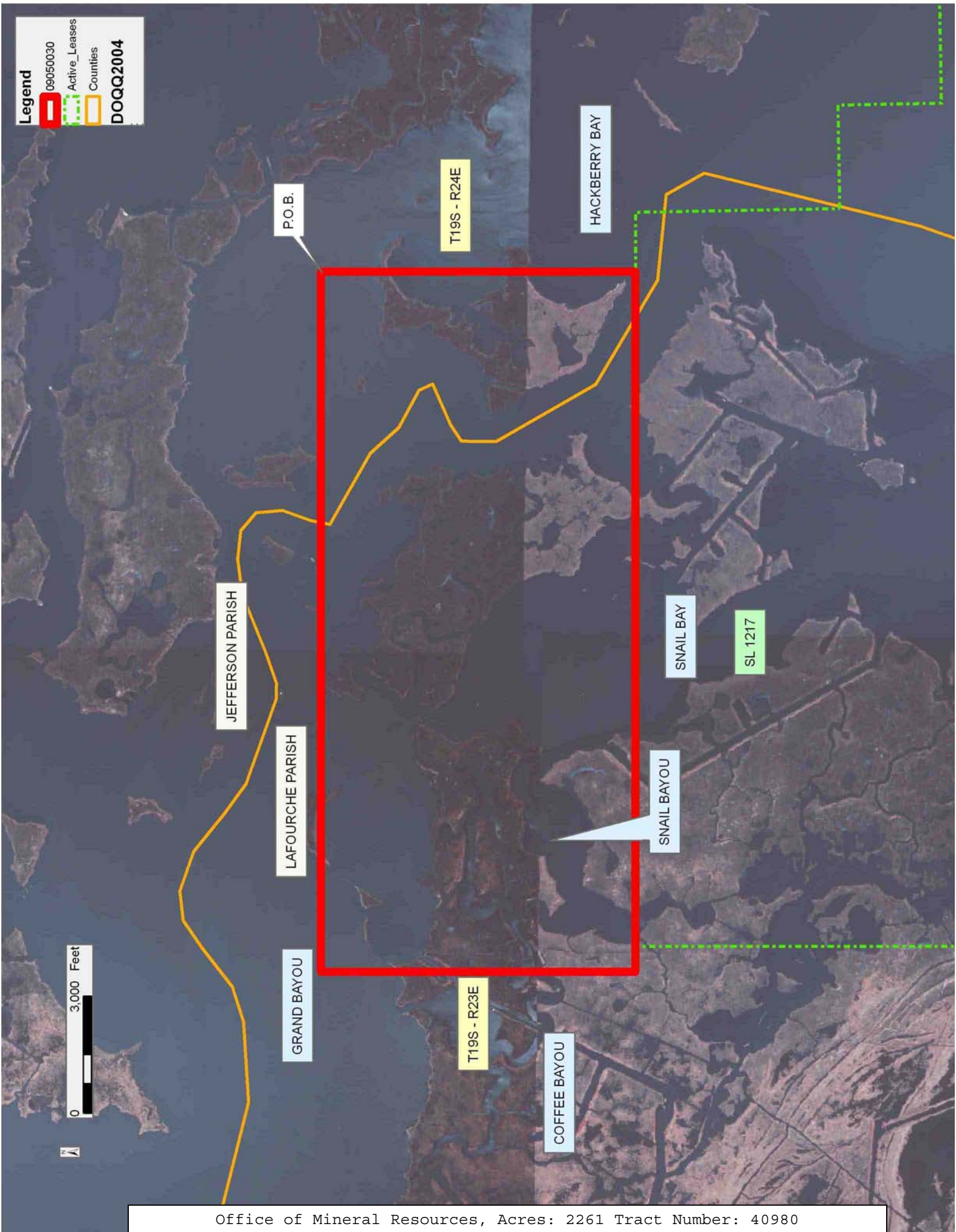
NOTE: The above description of the Tract nominated for lease has been provided and corrected, where required, exclusively by the nomination party. Any mineral lease selected from this Tract and awarded by the Louisiana State Mineral Board shall be without warranty of any kind, either express, implied, or statutory, including, but not limited to, the implied warranties of merchantability and fitness for a particular purpose. Should the mineral lease awarded by the Louisiana State Mineral Board be subsequently modified, cancelled or abrogated due to the existence of conflicting leases, operating agreements, private claims or other future obligations or conditions which may affect all or any portion of the leased Tract, it shall not relieve the Lessee of the obligation to pay any bonus due thereon to the Louisiana State Mineral Board, nor shall the Louisiana State Mineral Board be obligated to refund any consideration paid by the Lessor prior to such modification, cancellation, or abrogation, including, but not limited to, bonuses, rentals and royalties.

NOTE: The State of Louisiana does hereby reserve, and this lease shall be subject to, the imprescriptible right of surface use in the nature of a servitude in favor of the Department of Natural Resources, including its Offices and Commissions, for the sole purpose of implementing, constructing, servicing and maintaining approved coastal zone management and/or restoration projects. Utilization of any and all rights derived under this lease by the mineral lessee, its agents, successors or assigns, shall not interfere with nor hinder the reasonable surface use by the Department of Natural Resources, its Offices or Commissions, as herein above reserved.

NOTE: The Department of Wildlife and Fisheries has designated certain areas in the coastal waters of the State of Louisiana as Oyster Seed Bed Areas. The exact location of those Seed Bed Areas must be obtained from the Department of Wildlife and Fisheries and any work done under a mineral lease from the State of Louisiana may necessarily be conducted in conformity with the rules and regulations promulgated by the said Department of Wildlife and Fisheries for Oyster Seed Bed Areas.

Applicant: HAROLD J. ANDERSON, INC.

Bidder	Cash Payment	Price/ Acre	Rental	Oil	Gas	Other



TRACT 40981 - Jefferson and Lafourche Parishes, Louisiana

All of the lands now or formerly constituting the beds and bottoms of all water bodies of every nature and description as to which title is vested in the State of Louisiana, together with all islands arising therein and other lands formed by accretion or by reliction, where allowed by law, excepting tax adjudicated lands, and not presently under mineral lease on May 13, 2009, situated in Jefferson and Lafourche Parishes, Louisiana, and more particularly described as follows: Beginning at a point having Coordinates of X = 2,415,400.00 and Y = 289,200.00; thence East 4,100.00 feet to a point on the West boundary of State Lease No. 19044 having Coordinates of X = 2,419,500.00 and Y = 289,200.00; thence South 1,429.62 feet along the West boundary of said State Lease No. 19044 to its Southwest corner, also being the Westernmost Northwest corner of State Lease No. 19045 having Coordinates of X = 2,419,500.00 and Y = 287,770.38; thence along the boundary of said State Lease No. 19045 the following courses: South 1,227.05 feet to its Southwest corner having Coordinates of X = 2,419,500.00 and Y = 286,543.33 and South 89 degrees 59 minutes 09 seconds East 3,508.89 feet to a point having Coordinates of X = 2,423,008.89 and Y = 286,542.47; thence South 4,700.32 feet to the Northwest corner of State Lease No. 15822, as amended, having Coordinates of X = 2,423,008.89 and Y = 281,842.15; thence South 3,966.54 feet along the West boundary of said State Lease No. 15822 to its Southwest corner, also being the Northwest corner of State Lease No. 16338, as amended, having Coordinates of X = 2,423,008.89 and Y = 277,875.61; thence South 295.45 feet along the West boundary of said State Lease No. 16338 to its Southwest corner having Coordinates of X = 2,423,008.89 and Y = 277,580.16; thence West 2,158.89 feet to a point on the East boundary of State Lease No. 19385 having Coordinates of X = 2,420,850.00 and Y = 277,580.16; thence along the boundary of said State Lease No. 19385 the following courses: North 751.44 feet to its Northeast corner having Coordinates of X = 2,420,850.00 and Y = 278,331.60 and West 3,877.10 feet to its Northwest corner, also being a point on the Eastern boundary of State Lease No. 1217, as amended, having Coordinates of X = 2,416,972.89 and Y = 278,331.60; thence along the boundary of said State Lease No. 1217 the following: Northerly approximately 2,782 feet to its Northernmost Northeast corner and Westerly approximately 1,522 feet to a point of intersection with a North-South line having a Coordinate of X = 2,415,400.00; thence Northerly approximately 8,087 feet along said line to the point of beginning, **LESS AND EXCEPT** that portion, if any, of State Lease No. 356, as amended, and State Lease No. 1217, as amended, that may lie within the above described tract, containing approximately **1,348 acres**, all as more particularly outlined on a plat on file in the Office of Mineral Resources, Department of Natural Resources. All bearings, distances and coordinates are based on Louisiana Coordinate System of 1927, (North or South Zone), where applicable.

NOTE: The above description of the Tract nominated for lease has been provided and corrected, where required, exclusively by the nomination party. Any mineral lease selected from this Tract and awarded by the

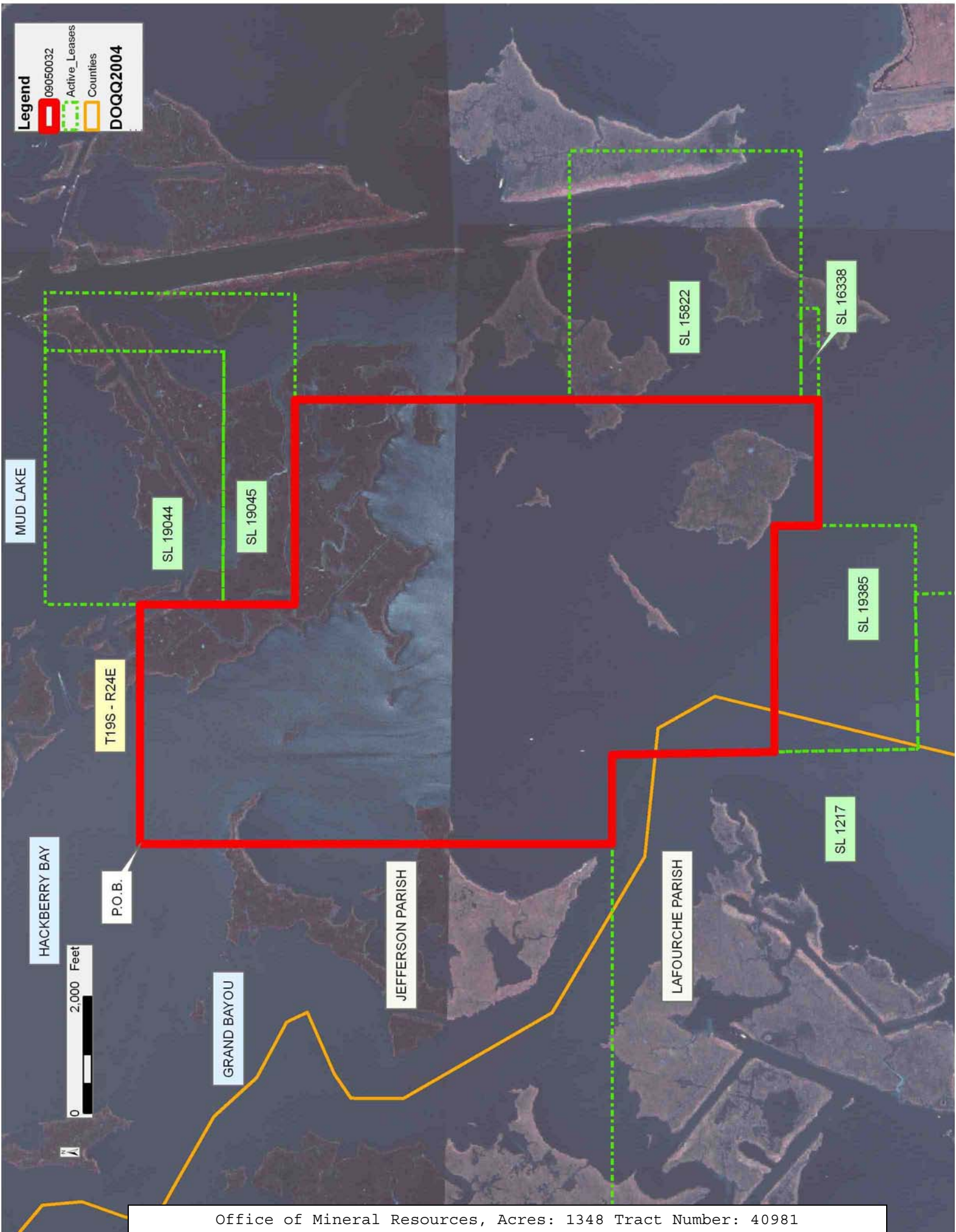
Louisiana State Mineral Board shall be without warranty of any kind, either express, implied, or statutory, including, but not limited to, the implied warranties of merchantability and fitness for a particular purpose. Should the mineral lease awarded by the Louisiana State Mineral Board be subsequently modified, cancelled or abrogated due to the existence of conflicting leases, operating agreements, private claims or other future obligations or conditions which may affect all or any portion of the leased Tract, it shall not relieve the Lessee of the obligation to pay any bonus due thereon to the Louisiana State Mineral Board, nor shall the Louisiana State Mineral Board be obligated to refund any consideration paid by the Lessor prior to such modification, cancellation, or abrogation, including, but not limited to, bonuses, rentals and royalties.

NOTE: The State of Louisiana does hereby reserve, and this lease shall be subject to, the imprescriptible right of surface use in the nature of a servitude in favor of the Department of Natural Resources, including its Offices and Commissions, for the sole purpose of implementing, constructing, servicing and maintaining approved coastal zone management and/or restoration projects. Utilization of any and all rights derived under this lease by the mineral lessee, its agents, successors or assigns, shall not interfere with nor hinder the reasonable surface use by the Department of Natural Resources, its Offices or Commissions, as herein above reserved.

NOTE: The Department of Wildlife and Fisheries has designated certain areas in the coastal waters of the State of Louisiana as Oyster Seed Bed Areas. The exact location of those Seed Bed Areas must be obtained from the Department of Wildlife and Fisheries and any work done under a mineral lease from the State of Louisiana may necessarily be conducted in conformity with the rules and regulations promulgated by the said Department of Wildlife and Fisheries for Oyster Seed Bed Areas.

Applicant: HAROLD J. ANDERSON, INC.

Bidder	Cash Payment	Price/ Acre	Rental	Oil	Gas	Other



Legend

09050032

Active_Leases

Counties

DOQQ2004

MUD LAKE

SL 19044

SL 19045

T19S - R24E

P.O.B.

HACKBERRY BAY

0 2,000 Feet

GRAND BAYOU

JEFFERSON PARISH

LAFOURCHE PARISH

SL 15822

SL 16338

SL 19385

SL 1217

TRACT 40982 - Lafourche Parish, Louisiana

All of the lands now or formerly constituting the beds and bottoms of all water bodies of every nature and description as to which title is vested in the State of Louisiana, together with all islands arising therein and other lands formed by accretion or by reliction, where allowed by law, excepting tax adjudicated lands, and not presently under mineral lease on May 13, 2009, situated in Lafourche Parish, Louisiana, and more particularly described as follows: Beginning at a point having Coordinates of X = 2,288,556.37 feet and Y = 273,300.00 feet; thence North 3,699.89 feet to the Southeast corner of State Lease No. 19705 having Coordinates of X = 2,288,556.37 feet and Y = 276,999.89 feet; thence Northerly, along the East line of said State Lease No. 19705, approximately 2,697 feet to its Northeast corner, also being a point on the Southern boundary of the Point Aux Chenes State Wildlife Management Area; thence Easterly along the Southern boundary of said Point Aux Chenes State Wildlife Management Area, approximately 13,396 feet to the Northeast corner of State Lease No. 19704; thence South 01 Degree 25 Minutes 11 Seconds East along the West line of said State Lease No. 19704 approximately 6,730 feet to a point having a Coordinate of Y = 273,300.00 feet; thence West approximately 13,489 feet to the point of beginning, containing approximately **119 acres**, all as more particularly outlined on a plat on file in the Office of Mineral Resources, Department of Natural Resources. All bearings, distances and coordinates are based on Louisiana Coordinate System of 1927, (North or South Zone), where applicable.

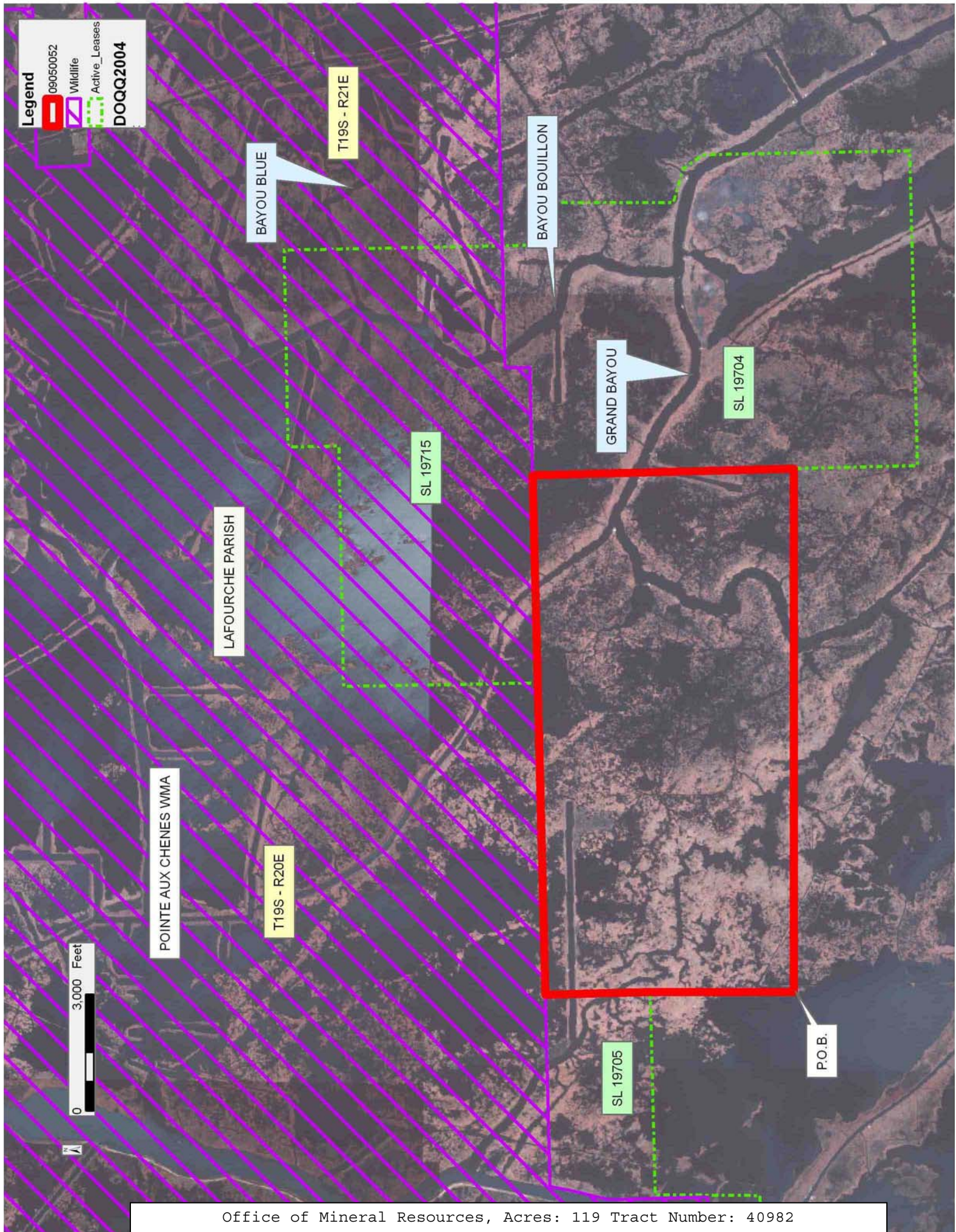
NOTE: The above description of the Tract nominated for lease has been provided and corrected, where required, exclusively by the nomination party. Any mineral lease selected from this Tract and awarded by the Louisiana State Mineral Board shall be without warranty of any kind, either express, implied, or statutory, including, but not limited to, the implied warranties of merchantability and fitness for a particular purpose. Should the mineral lease awarded by the Louisiana State Mineral Board be subsequently modified, cancelled or abrogated due to the existence of conflicting leases, operating agreements, private claims or other future obligations or conditions which may affect all or any portion of the leased Tract, it shall not relieve the Lessee of the obligation to pay any bonus due thereon to the Louisiana State Mineral Board, nor shall the Louisiana State Mineral Board be obligated to refund any consideration paid by the Lessor prior to such modification, cancellation, or abrogation, including, but not limited to, bonuses, rentals and royalties.

NOTE: The State of Louisiana does hereby reserve, and this lease shall be subject to, the imprescriptible right of surface use in the nature of a servitude in favor of the Department of Natural Resources, including its Offices and Commissions, for the sole purpose of implementing, constructing, servicing and maintaining approved coastal zone management and/or restoration projects. Utilization of any and all rights derived under this lease by the mineral lessee, its agents, successors or assigns, shall not interfere with nor hinder the reasonable surface use by the

Department of Natural Resources, its Offices or Commissions, as herein above reserved.

Applicant: SPECTER EXPLORATION, INC.

Bidder	Cash Payment	Price/ Acre	Rental	Oil	Gas	Other



TRACT 40983 - Jefferson Parish, Louisiana

All of the lands now or formerly constituting the beds and bottoms of all water bodies of every nature and description as to which title is vested in the State of Louisiana, together with all islands arising therein and other lands formed by accretion or by reliction, where allowed by law, excepting tax adjudicated lands, and not presently under mineral lease on May 13, 2009, situated in Jefferson Parish, Louisiana, and more particularly described as follows: Beginning at the Northwest Corner of State Lease No. 14534, having Coordinates of X = 2,435,132.02 and Y = 277,541.93; thence South along the West line of State Lease No. 14534 a distance of 2009.62 feet to a point on the West line of State Lease No. 14534 having Coordinates of X = 2,435,132.02 and Y = 275,532.31, said point also being the Northeast Corner of State Lease No. 15631, as amended; thence West along the North line of State Lease No. 15631 as amended a distance of 4004.19 feet to a point having Coordinates of X = 2,431,127.83 and Y = 275,532.31, said point also being the Northwest Corner of State Lease No. 15631, as amended; thence South along the West line of State Lease No. 15631, as amended, a distance of 2185.38 feet to a point having Coordinates of X = 2,431,127.83 and Y = 273,346.93; thence West a distance of 6090.68 feet to a point having Coordinates of X = 2,425,037.15 and Y = 273,346.93; thence North a distance of 4233.22 feet to a point on the South line of State Lease No. 15823, as amended, having Coordinates of X = 2,425,037.15 and Y = 277,580.15; thence East along the South line of State Lease No. 15823, as amended, a distance of 2233.72 feet to a point having Coordinates of X = 2,427,270.87 and Y = 277,580.15, said point also being the Southeast corner of State Lease No. 15823, as amended; thence South 89 degrees, 43 minutes, 17 seconds East, a distance of 7861.25 feet to a point having Coordinates of X = 2,435,132.02 and Y = 277,541.93, said point being the point of beginning, containing approximately **605 acres**, all as more particularly outlined on a plat on file in the Office of Mineral Resources, Department of Natural Resources. All bearings, distances and coordinates are based on Louisiana Coordinate System of 1927, (North or South Zone), where applicable.

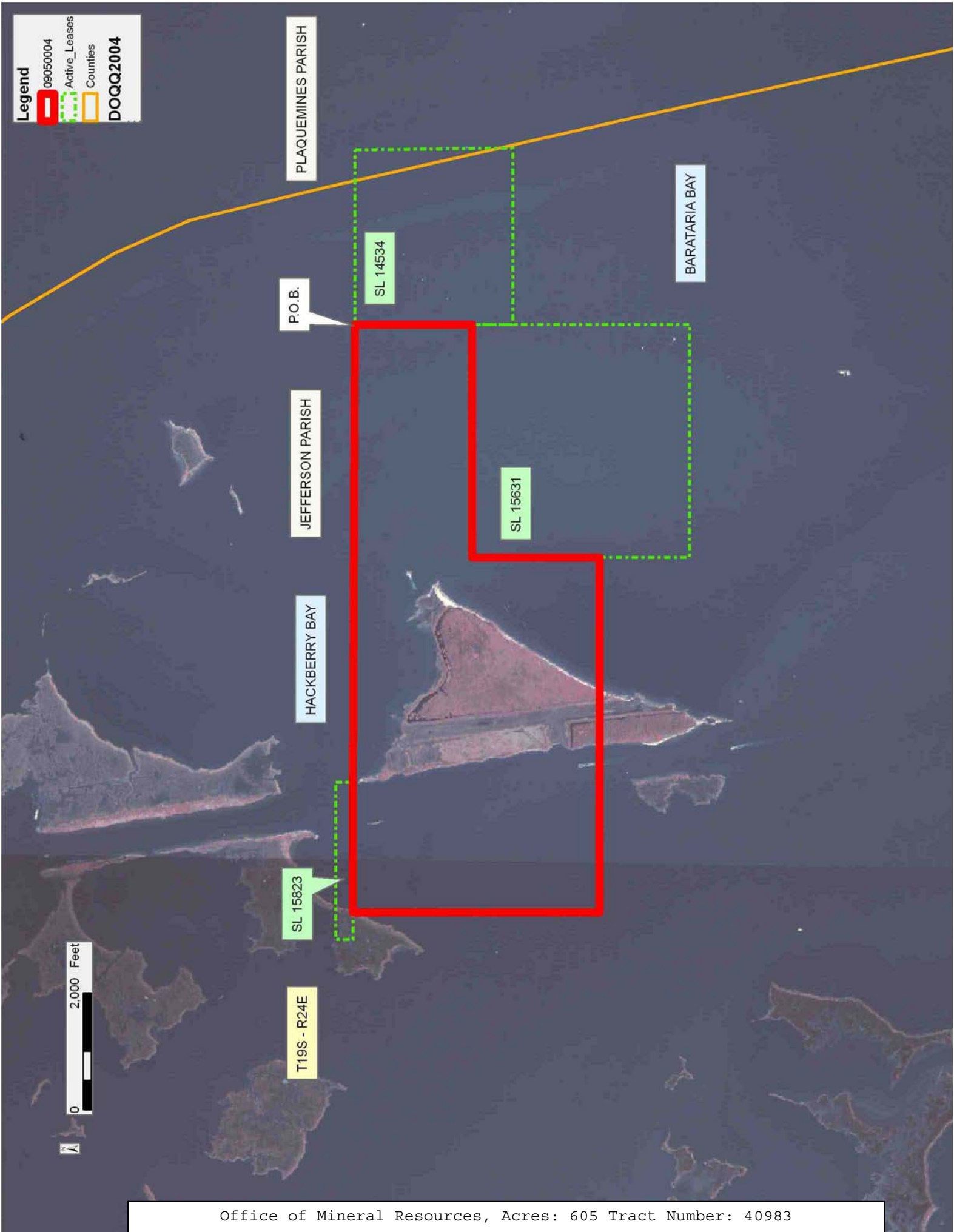
NOTE: The above description of the Tract nominated for lease has been provided and corrected, where required, exclusively by the nomination party. Any mineral lease selected from this Tract and awarded by the Louisiana State Mineral Board shall be without warranty of any kind, either express, implied, or statutory, including, but not limited to, the implied warranties of merchantability and fitness for a particular purpose. Should the mineral lease awarded by the Louisiana State Mineral Board be subsequently modified, cancelled or abrogated due to the existence of conflicting leases, operating agreements, private claims or other future obligations or conditions which may affect all or any portion of the leased Tract, it shall not relieve the Lessee of the obligation to pay any bonus due thereon to the Louisiana State Mineral Board, nor shall the Louisiana State Mineral Board be obligated to refund any consideration paid by the Lessor prior to such modification, cancellation, or abrogation, including, but not limited to, bonuses, rentals and royalties.

NOTE: The State of Louisiana does hereby reserve, and this lease shall be subject to, the imprescriptible right of surface use in the nature of a servitude in favor of the Department of Natural Resources, including its Offices and Commissions, for the sole purpose of implementing, constructing, servicing and maintaining approved coastal zone management and/or restoration projects. Utilization of any and all rights derived under this lease by the mineral lessee, its agents, successors or assigns, shall not interfere with nor hinder the reasonable surface use by the Department of Natural Resources, its Offices or Commissions, as herein above reserved.

NOTE: The Department of Wildlife and Fisheries has designated certain areas in the coastal waters of the State of Louisiana as Oyster Seed Bed Areas. The exact location of those Seed Bed Areas must be obtained from the Department of Wildlife and Fisheries and any work done under a mineral lease from the State of Louisiana may necessarily be conducted in conformity with the rules and regulations promulgated by the said Department of Wildlife and Fisheries for Oyster Seed Bed Areas.

Applicant: LANDSOLUTIONS, INC.

Bidder	Cash Payment	Price/ Acre	Rental	Oil	Gas	Other



TRACT 40984 - Terrebonne Parish, Louisiana

All of the lands now or formerly constituting the beds and bottoms of all water bodies of every nature and description as to which title is vested in the State of Louisiana, together with all islands arising therein and other lands formed by accretion or by reliction, where allowed by law, excepting tax adjudicated lands, and not presently under mineral lease on May 13, 2009, situated in Terrebonne Parish, Louisiana, and more particularly described as follows: Point of Beginning having Coordinates of X = 2,261,000.00 feet and Y = 263,294.87 feet; thence North approximately 15,760 feet to a point on the Southern boundary of the Pointe Aux Chenes State Wildlife Management Area; thence along the Southern boundary of said Pointe Aux Chenes State Wildlife Management Area Easterly, Southeasterly, Northeasterly, and Easterly to a point of intersection with a point on the West line of State Lease No. 19703; thence South 01 Degree 44 Minutes 15 Seconds East approximately 4,039 feet to the Southwest corner of said State Lease No. 19703, also being a point on the North line of State Lease No. 18223, as amended, having Coordinates of X = 2,278,013.55 feet and Y = 274,040.55 feet; thence along the North line of said State Lease No. 18223, as amended, South 88 Degrees 34 Minutes 18 Seconds West 3,323.28 feet to the Northwest corner of said State Lease No. 18223, as amended, having Coordinates of X = 2,274,691.30 feet and Y = 273,957.71 feet; thence West 1,691.30 feet to a point having Coordinates of X = 2,273,000.00 feet and Y = 273,957.71 feet; thence South 4,900.56 feet to a point having Coordinates of X = 2,273,000.00 feet and Y = 269,057.15 feet; thence West 500.00 feet to a point having Coordinates of X = 2,272,500.00 feet and Y = 269,057.15 feet; thence South 5,762.28 feet to a point having Coordinates of X = 2,272,500.00 feet and Y = 263,294.87 feet; thence West 966.47 feet to a point at the Northeast corner of State Lease No. 18871, Parcel A, as amended, having Coordinates of X = 2,271,533.53 feet and Y = 263,294.87 feet; thence West along the North line of said State Lease No. 18871, Parcel A, as amended, 3,745.00 feet to the Northwest corner of said State Lease No. 18871, Parcel A, as amended, having Coordinates of X = 2,267,788.53 feet and Y = 263,294.87 feet; thence West 6,788.53 feet to the point of beginning, containing approximately **14 acres**, all as more particularly outlined on a plat on file in the Office of Mineral Resources, Department of Natural Resources. All bearings, distances and coordinates are based on Louisiana Coordinate System of 1927, (North or South Zone), where applicable.

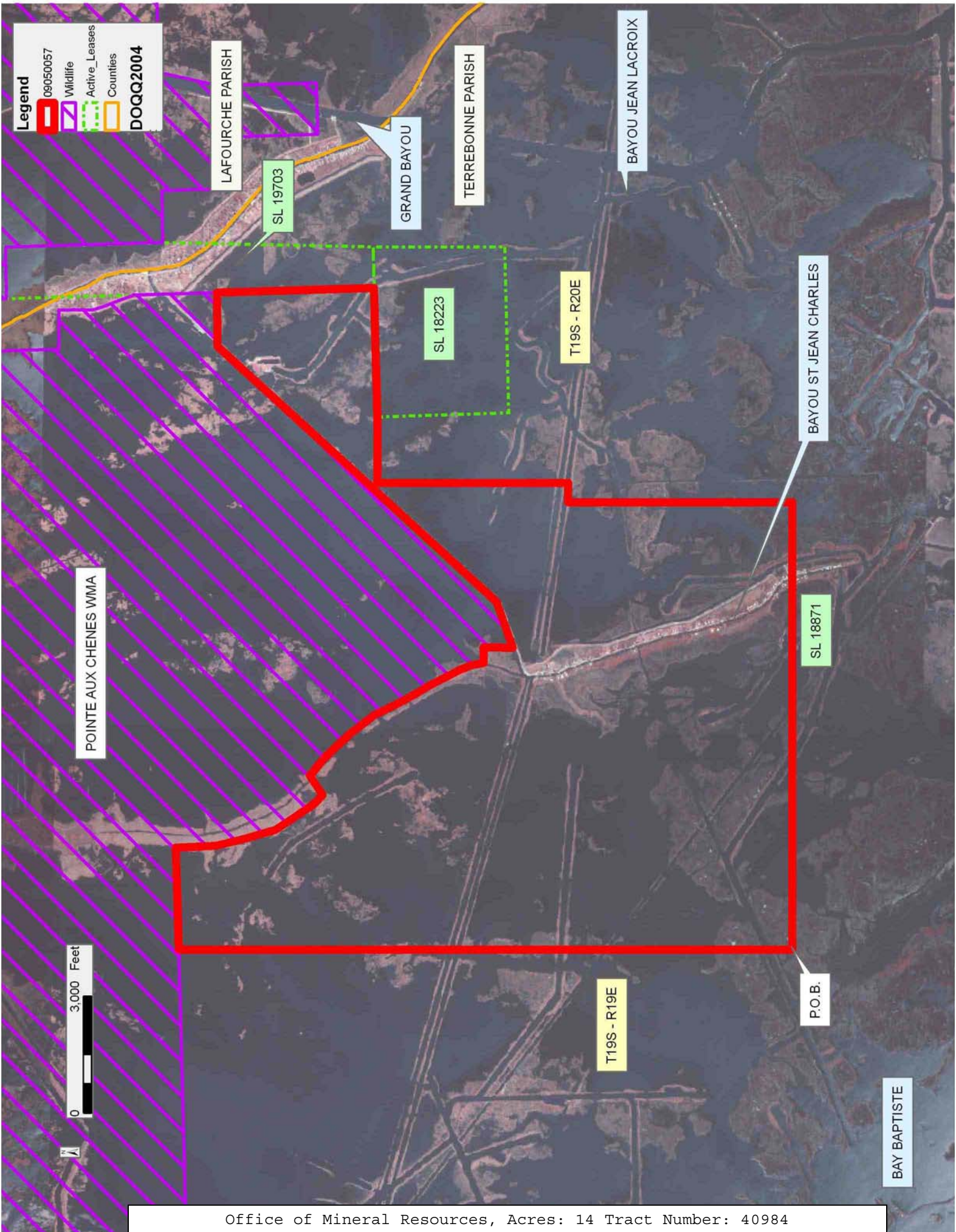
NOTE: The above description of the Tract nominated for lease has been provided and corrected, where required, exclusively by the nomination party. Any mineral lease selected from this Tract and awarded by the Louisiana State Mineral Board shall be without warranty of any kind, either express, implied, or statutory, including, but not limited to, the implied warranties of merchantability and fitness for a particular purpose. Should the mineral lease awarded by the Louisiana State Mineral Board be subsequently modified, cancelled or abrogated due to the existence of conflicting leases, operating agreements, private claims or other future obligations or conditions which may affect all or any portion

of the leased Tract, it shall not relieve the Lessee of the obligation to pay any bonus due thereon to the Louisiana State Mineral Board, nor shall the Louisiana State Mineral Board be obligated to refund any consideration paid by the Lessor prior to such modification, cancellation, or abrogation, including, but not limited to, bonuses, rentals and royalties.

NOTE: The State of Louisiana does hereby reserve, and this lease shall be subject to, the imprescriptible right of surface use in the nature of a servitude in favor of the Department of Natural Resources, including its Offices and Commissions, for the sole purpose of implementing, constructing, servicing and maintaining approved coastal zone management and/or restoration projects. Utilization of any and all rights derived under this lease by the mineral lessee, its agents, successors or assigns, shall not interfere with nor hinder the reasonable surface use by the Department of Natural Resources, its Offices or Commissions, as herein above reserved.

Applicant: SPECTER EXPLORATION, INC.

Bidder	Cash Payment	Price/ Acre	Rental	Oil	Gas	Other



TRACT 40985 - Lafourche and Terrebonne Parishes, Louisiana

All of the lands now or formerly constituting the beds and bottoms of all water bodies of every nature and description as to which title is vested in the State of Louisiana, together with all islands arising therein and other lands formed by accretion or by reliction, where allowed by law, excepting tax adjudicated lands, and not presently under mineral lease on May 13, 2009, situated in Lafourche and Terrebonne Parishes, Louisiana, and more particularly described as follows: Beginning at a point having Coordinates of X = 2,288,894.00 feet and Y = 269,057.15 feet; thence West 15,894.00 feet to a point having Coordinates of X = 2,273,000.00 feet and Y = 269,057.15 feet; thence North 4,900.56 feet to a point having Coordinates of X = 2,273,000.00 feet and Y = 273,957.71 feet; thence East 1,691.30 feet to the Northwest corner of State Lease No. 18223 having Coordinates of X = 2,274,691.30 feet and Y = 273,957.71 feet; thence along the boundary of said State Lease No. 18223 the following courses: South 01 Degrees 49 Minutes 13 Seconds East 3,374.49 feet to a point having Coordinates of X = 2,274,798.49 feet and Y = 270,584.92 feet, North 88 Degrees 36 Minutes 49 Seconds East 4,266.35 feet to a point having Coordinates of X = 2,279,063.59 feet and Y = 270,688.15 feet, North 3,378.58 feet to a common corner of State Lease Nos. 18223, 19703 and 19705 having Coordinates of X = 2,279,063.59 feet and Y = 274,066.73 feet; thence along the South boundary of State Lease No. 19705 the following courses: North 88 degrees 34 Minutes 18 Seconds East 4,259.50 feet to a point having Coordinates of X = 2,283,321.77 feet and Y = 274,172.91 feet, North 00 Degrees 29 Minutes 10 Seconds East 2,698.73 feet to a point having Coordinates of X = 2,283,344.67 feet and Y = 276,871.54 feet, North 88 Degrees 35 Minutes 21 Seconds East 5,213.28 feet to the Southeast corner of State Lease No. 19705 having Coordinates of X = 2,288,556.37 feet and Y = 276,999.89 feet; thence South 3,699.89 feet to a point having Coordinates of X = 2,288,556.37 feet and Y = 273,300.00 feet; thence East 337.63 feet to a point having Coordinates of X = 2,288,894.00 feet and Y = 273,300.00 feet; thence South 4242.85 feet to a point the point of beginning, containing approximately **40 acres**, all as more particularly outlined on a plat on file in the Office of Mineral Resources, Department of Natural Resources. All bearings, distances and coordinates are based on Louisiana Coordinate System of 1927, (North or South Zone), where applicable.

NOTE: The above description of the Tract nominated for lease has been provided and corrected, where required, exclusively by the nomination party. Any mineral lease selected from this Tract and awarded by the Louisiana State Mineral Board shall be without warranty of any kind, either express, implied, or statutory, including, but not limited to, the implied warranties of merchantability and fitness for a particular purpose. Should the mineral lease awarded by the Louisiana State Mineral Board be subsequently modified, cancelled or abrogated due to the existence of conflicting leases, operating agreements, private claims or other future obligations or conditions which may affect all or any portion of the leased Tract, it shall not relieve the Lessee of the obligation to

pay any bonus due thereon to the Louisiana State Mineral Board, nor shall the Louisiana State Mineral Board be obligated to refund any consideration paid by the Lessor prior to such modification, cancellation, or abrogation, including, but not limited to, bonuses, rentals and royalties.

NOTE: The State of Louisiana does hereby reserve, and this lease shall be subject to, the imprescriptible right of surface use in the nature of a servitude in favor of the Department of Natural Resources, including its Offices and Commissions, for the sole purpose of implementing, constructing, servicing and maintaining approved coastal zone management and/or restoration projects. Utilization of any and all rights derived under this lease by the mineral lessee, its agents, successors or assigns, shall not interfere with nor hinder the reasonable surface use by the Department of Natural Resources, its Offices or Commissions, as herein above reserved.

Applicant: SPECTER EXPLORATION, INC.

Bidder	Cash Payment	Price/ Acre	Rental	Oil	Gas	Other

