

TRACT 40966 - Jefferson and Lafourche Parishes, Louisiana

All of the lands now or formerly constituting the beds and bottoms of all water bodies of every nature and description as to which title is vested in the State of Louisiana, together with all islands arising therein and other lands formed by accretion or by reliction, where allowed by law, excepting tax adjudicated lands, and not presently under mineral lease on May 13, 2009, situated in Jefferson and Lafourche Parishes, Louisiana, and more particularly described as follows: Beginning at a point having Coordinates of X = 2,364,911.78 and Y = 324,096.37; thence East approximately 7,399 feet to a point of intersection with the Western boundary of State Lease No. 1972, as amended, having a Coordinate of Y = 324,096.37; thence Southerly along the meanders of the Western boundary of said State Lease No. 1972 to a point of intersection with an East-West line having a Coordinate of Y = 316,156.13; thence West approximately 5,900 feet along said line to a point having Coordinates of X = 2,364,911.78 and Y = 316,156.13; thence North 7,940.24 feet to the point of beginning, **LESS AND EXCEPT** that portion, if any, of said State Lease No. 1972 which may lie within the above described tract, containing approximately **1,127 acres**, all as more particularly outlined on a plat on file in the Office of Mineral Resources, Department of Natural Resources. All bearings, distances and coordinates are based on Louisiana Coordinate System of 1927, (North or South Zone), where applicable.

NOTE: The above description of the Tract nominated for lease has been provided and corrected, where required, exclusively by the nomination party. Any mineral lease selected from this Tract and awarded by the Louisiana State Mineral Board shall be without warranty of any kind, either express, implied, or statutory, including, but not limited to, the implied warranties of merchantability and fitness for a particular purpose. Should the mineral lease awarded by the Louisiana State Mineral Board be subsequently modified, cancelled or abrogated due to the existence of conflicting leases, operating agreements, private claims or other future obligations or conditions which may affect all or any portion of the leased Tract, it shall not relieve the Lessee of the obligation to pay any bonus due thereon to the Louisiana State Mineral Board, nor shall the Louisiana State Mineral Board be obligated to refund any consideration paid by the Lessor prior to such modification, cancellation, or abrogation, including, but not limited to, bonuses, rentals and royalties.

NOTE: The State of Louisiana does hereby reserve, and this lease shall be subject to, the imprescriptible right of surface use in the nature of a servitude in favor of the Department of Natural Resources, including its Offices and Commissions, for the sole purpose of implementing, constructing, servicing and maintaining approved coastal zone management and/or restoration projects. Utilization of any and all rights derived under this lease by the mineral lessee, its agents, successors or assigns, shall not interfere with nor hinder the reasonable surface use by the Department of Natural Resources, its Offices or Commissions, as herein above reserved.

NOTE: The Department of Wildlife and Fisheries has designated certain areas in the coastal waters of the State of Louisiana as Oyster Seed Bed Areas. The exact location of those Seed Bed Areas must be obtained from the Department of Wildlife and Fisheries and any work done under a mineral lease from the State of Louisiana may necessarily be conducted in conformity with the rules and regulations promulgated by the said Department of Wildlife and Fisheries for Oyster Seed Bed Areas.

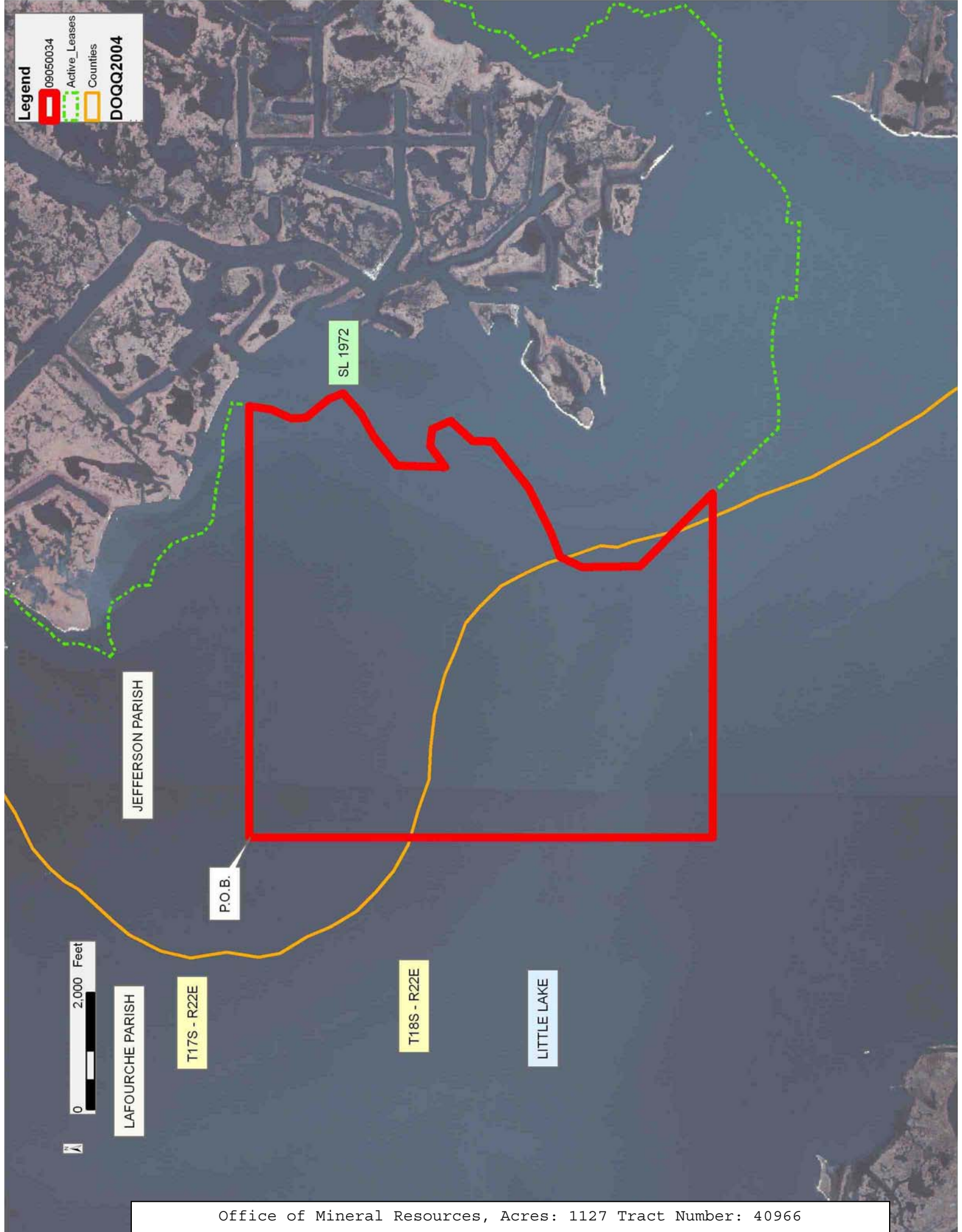
Applicant: ALJ ENERGY

Bidder	Cash Payment	Price/Acre	Rental	Oil	Gas	Other

Legend

- █ 09050034
- ⋯ Active_Leases
- █ Counties

DOQQ2004



TRACT 40967 - Terrebonne Parish, Louisiana

All of the lands now or formerly constituting the beds and bottoms of all water bodies of every nature and description as to which title is vested in the State of Louisiana, together with all islands arising therein and other lands formed by accretion or by reliction, where allowed by law, excepting tax adjudicated lands, and not presently under mineral lease on May 13, 2009, situated in Terrebonne Parish, Louisiana, and more particularly described as follows: Beginning at a point having Coordinates of X = 2,138,800.00 feet and Y = 321,400.00 feet; thence East 8,500.00 feet to a point having Coordinates of X = 2,147,300.00 feet and Y = 321,400.00 feet; thence South 12,000.00 feet to a point having Coordinates of X = 2,147,300.00 feet and Y = 309,400.00 feet; thence West 8,500.00 feet to a point having Coordinates of X = 2,138,800.00 feet and Y = 309,400.00 feet; thence North 12,000.00 feet to the point of beginning, containing approximately **87 acres**, all as more particularly outlined on a plat on file in the Office of Mineral Resources, Department of Natural Resources. All bearings, distances and coordinates are based on Louisiana Coordinate System of 1927, (North or South Zone), where applicable.

NOTE: The above description of the Tract nominated for lease has been provided and corrected, where required, exclusively by the nomination party. Any mineral lease selected from this Tract and awarded by the Louisiana State Mineral Board shall be without warranty of any kind, either express, implied, or statutory, including, but not limited to, the implied warranties of merchantability and fitness for a particular purpose. Should the mineral lease awarded by the Louisiana State Mineral Board be subsequently modified, cancelled or abrogated due to the existence of conflicting leases, operating agreements, private claims or other future obligations or conditions which may affect all or any portion of the leased Tract, it shall not relieve the Lessee of the obligation to pay any bonus due thereon to the Louisiana State Mineral Board, nor shall the Louisiana State Mineral Board be obligated to refund any consideration paid by the Lessor prior to such modification, cancellation, or abrogation, including, but not limited to, bonuses, rentals and royalties.

NOTE: The State of Louisiana does hereby reserve, and this lease shall be subject to, the imprescriptible right of surface use in the nature of a servitude in favor of the Department of Natural Resources, including its Offices and Commissions, for the sole purpose of implementing, constructing, servicing and maintaining approved coastal zone management and/or restoration projects. Utilization of any and all rights derived under this lease by the mineral lessee, its agents, successors or assigns, shall not interfere with nor hinder the reasonable surface use by the Department of Natural Resources, its Offices or Commissions, as herein above reserved.

Applicant: NEW HOLDINGS, LLC

Bidder	Cash Payment	Price/Acre	Rental	Oil	Gas	Other

Legend
09050033
DOQQ2004

T17S - R16E

BAYOU ST PAUL

TERREBONNE PARISH



P.O.B.

0 2,000 Feet

T17S - R15E

TRACT 40968 - Jefferson Parish, Louisiana

All of the lands now or formerly constituting the beds and bottoms of all water bodies of every nature and description as to which title is vested in the State of Louisiana, together with all islands arising therein and other lands formed by accretion or by reliction, where allowed by law, excepting tax adjudicated lands, and not presently under mineral lease on May 13, 2009, situated in Jefferson Parish, Louisiana, and more particularly described as follows: Beginning at the Northeast corner of State Lease No. 10215, as amended, having Coordinates of X = 2,388,134.12 and Y = 312,012.88; thence South 76 degrees 00 minutes 48 seconds West 1,446.54 feet along the North boundary of said State Lease No. 10215 to a point on the Eastern boundary of State Lease No. 19864 having Coordinates of X = 2,386,730.46 and Y = 311,663.25; thence North 5,718.60 feet along the Eastern boundary of said State Lease No. 19864 to the Southwest corner of State Lease No. 16709, as amended, having Coordinates of X = 2,386,730.46 and Y = 317,381.85; thence East 2,326.97 feet along the South boundary of said State Lease No. 16709 to its Southeast corner having Coordinates of X = 2,389,057.43 and Y = 317,381.85; thence East 3,838.09 feet to a point having Coordinates of X = 2,392,895.52 and Y = 317,381.85; thence South 5,327.76 feet to a point having Coordinates of X = 2,392,895.52 and Y = 312,054.09; thence West 4,195.53 feet to a point having Coordinates of X = 2,388,700.00 and Y = 312,054.09; thence South 4,828.61 feet to a point having Coordinates of X = 2,388,700.00 and Y = 307,225.48; thence West 3,085.00 feet to a point on the Eastern boundary of the Northern portion of State Lease No. 2383, as amended, having Coordinates of X = 2,385,615.00 and Y = 307,225.48; thence North 00 degrees 35 minutes 15 seconds West 1,435.68 feet along the Eastern boundary of the Northern portion of said State Lease No. 2383 to a point of intersection with the Southern boundary of said State Lease No. 10215 having Coordinates of X = 2,385,600.28 and Y = 308,661.08; thence along the boundary of said State Lease No. 10215 the following courses: North 76 degrees 00 minutes 48 seconds East 2,639.94 feet to a point having Coordinates of X = 2,388,161.95 and Y = 309,299.15 and North 00 degrees 35 minutes 15 seconds West 2,713.87 feet to the point of beginning, containing approximately **905 acres**, all as more particularly outlined on a plat on file in the Office of Mineral Resources, Department of Natural Resources. All bearings, distances and coordinates are based on Louisiana Coordinate System of 1927, (North or South Zone), where applicable.

NOTE: The above description of the Tract nominated for lease has been provided and corrected, where required, exclusively by the nomination party. Any mineral lease selected from this Tract and awarded by the Louisiana State Mineral Board shall be without warranty of any kind, either express, implied, or statutory, including, but not limited to, the implied warranties of merchantability and fitness for a particular purpose. Should the mineral lease awarded by the Louisiana State Mineral Board be subsequently modified, cancelled or abrogated due to the existence of conflicting leases, operating agreements, private claims or other future obligations or conditions which may affect all or any portion

of the leased Tract, it shall not relieve the Lessee of the obligation to pay any bonus due thereon to the Louisiana State Mineral Board, nor shall the Louisiana State Mineral Board be obligated to refund any consideration paid by the Lessor prior to such modification, cancellation, or abrogation, including, but not limited to, bonuses, rentals and royalties.

NOTE: The State of Louisiana does hereby reserve, and this lease shall be subject to, the imprescriptible right of surface use in the nature of a servitude in favor of the Department of Natural Resources, including its Offices and Commissions, for the sole purpose of implementing, constructing, servicing and maintaining approved coastal zone management and/or restoration projects. Utilization of any and all rights derived under this lease by the mineral lessee, its agents, successors or assigns, shall not interfere with nor hinder the reasonable surface use by the Department of Natural Resources, its Offices or Commissions, as herein above reserved.

NOTE: The Department of Wildlife and Fisheries has designated certain areas in the coastal waters of the State of Louisiana as Oyster Seed Bed Areas. The exact location of those Seed Bed Areas must be obtained from the Department of Wildlife and Fisheries and any work done under a mineral lease from the State of Louisiana may necessarily be conducted in conformity with the rules and regulations promulgated by the said Department of Wildlife and Fisheries for Oyster Seed Bed Areas.

Applicant: ALJ ENERGY

Bidder	Cash Payment	Price/Acre	Rental	Oil	Gas	Other

Legend
09050037
Active_Leases
DOQQ2004

LONG BAY

BAYOU ST DENIS

LITTLE LAKE

JEFFERSON PARISH

T18S - R23E

SL 16709

P.O.B.

SL 10215

TURTLE BAY

SL 19864

SL 2383



TRACT 40969 - Jefferson and Lafourche Parishes, Louisiana

All of the lands now or formerly constituting the beds and bottoms of all water bodies of every nature and description as to which title is vested in the State of Louisiana, together with all islands arising therein and other lands formed by accretion or by reliction, where allowed by law, excepting tax adjudicated lands, and not presently under mineral lease on May 13, 2009, situated in Jefferson and Lafourche Parishes, Louisiana, and more particularly described as follows: Beginning at a point having Coordinates of X = 2,365,968.16 and Y = 316,156.13; thence East approximately 4,844 feet to a point on the Western boundary of State Lease No. 1972, as amended, having a Coordinate of Y = 316,156.13; thence along the boundary of said State Lease No. 1972 the following courses: Southeasterly approximately 1,576 feet to a point having Coordinates of X = 2,371,922.13 and Y = 315,038.09; South 88 degrees 20 minutes East 277.99 feet; East 220.00 feet; North 84 degrees 06 minutes East 145.80 feet; North 77 degrees 17 minutes East 158.90 feet; North 83 degrees 50 minutes East 186.10 feet; North 79 degrees 42 minutes East 167.70 feet; North 84 degrees 39 minutes East 160.70 feet; East 135.00 feet; South 87 degrees 20 minutes East 215.20 feet; South 82 degrees 30 minutes East 191.60 feet; South 77 degrees 44 minutes East 235.40 feet; South 79 degrees 23 minutes East 190.60 feet; South 16 degrees 30 minutes West 26.00 feet; South 10 degrees 29 minutes West 137.30 feet; South 06 degrees 21 minutes West 135.70 feet; South 87 degrees 35 minutes East 1,306.20 feet; North 120.00 feet; North 02 degrees 37 minutes West 100.60 feet; South 85 degrees 06 minutes East 64.80 feet; South 82 degrees 17 minutes East 297.70 feet; North 19 degrees 51 minutes West 3.20 feet; North 71 degrees 34 minutes East 132.90 feet; North 65 degrees 33 minutes East 120.80 feet; North 55 degrees 24 minutes East 176.10 feet; North 48 degrees 49 minutes East 159.40 feet; North 41 degrees 53 minutes East 389.50 feet; North 49 degrees 38 minutes East 131.20 feet; North 51 degrees 15 minutes East 247.60 feet; North 55 degrees 05 minutes East 209.60 feet; North 65 degrees 19 minutes East 203.60 feet and North 71 degrees 12 minutes 23 seconds East 148.06 feet to the Westernmost Northwest corner of State Lease No. 19908 having Coordinates of X = 2,377,350.00 and Y = 315,932.50; thence South 752.50 feet along the West boundary of said State Lease No. 19908 to its Southwest corner, also being the Northwest corner of State Lease No. 18010, as amended, having Coordinates of X = 2,377,350.00 and Y = 315,180.00; thence South 04 degrees 19 minutes 03 seconds West 1,002.84 feet along the West boundary of said State Lease No. 18010 to the Northeast corner of State Lease No. 19487 having Coordinates of X = 2,377,274.50 and Y = 314,180.00; thence West 1,704.50 feet along the North boundary of said State Lease No. 19487 to its Northwest corner, also being the Northeast corner of State Lease No. 19486 having Coordinates of X = 2,375,570.00 and Y = 314,180.00; thence along the boundary of said State Lease No. 19486 the following courses: West 2,500.00 feet to a point having Coordinates of X = 2,373,070.00 and Y = 314,180.00 and South 5,500.00 feet to its Southwest corner having Coordinates of X = 2,373,070.00 and Y = 308,680.00; thence West 7,101.84 feet to a point having Coordinates of X = 2,365,968.16 and Y = 308,680.00; thence North

7,476.13 feet to the point of beginning, **LESS AND EXCEPT** that portion, if any, of said State Lease No. 1972 which may lie within the above described tract, containing approximately **1,263 acres**, all as more particularly outlined on a plat on file in the Office of Mineral Resources, Department of Natural Resources. All bearings, distances and coordinates are based on Louisiana Coordinate System of 1927, (North or South Zone), where applicable.

NOTE: The above description of the Tract nominated for lease has been provided and corrected, where required, exclusively by the nomination party. Any mineral lease selected from this Tract and awarded by the Louisiana State Mineral Board shall be without warranty of any kind, either express, implied, or statutory, including, but not limited to, the implied warranties of merchantability and fitness for a particular purpose. Should the mineral lease awarded by the Louisiana State Mineral Board be subsequently modified, cancelled or abrogated due to the existence of conflicting leases, operating agreements, private claims or other future obligations or conditions which may affect all or any portion of the leased Tract, it shall not relieve the Lessee of the obligation to pay any bonus due thereon to the Louisiana State Mineral Board, nor shall the Louisiana State Mineral Board be obligated to refund any consideration paid by the Lessor prior to such modification, cancellation, or abrogation, including, but not limited to, bonuses, rentals and royalties.

NOTE: The State of Louisiana does hereby reserve, and this lease shall be subject to, the imprescriptible right of surface use in the nature of a servitude in favor of the Department of Natural Resources, including its Offices and Commissions, for the sole purpose of implementing, constructing, servicing and maintaining approved coastal zone management and/or restoration projects. Utilization of any and all rights derived under this lease by the mineral lessee, its agents, successors or assigns, shall not interfere with nor hinder the reasonable surface use by the Department of Natural Resources, its Offices or Commissions, as herein above reserved.

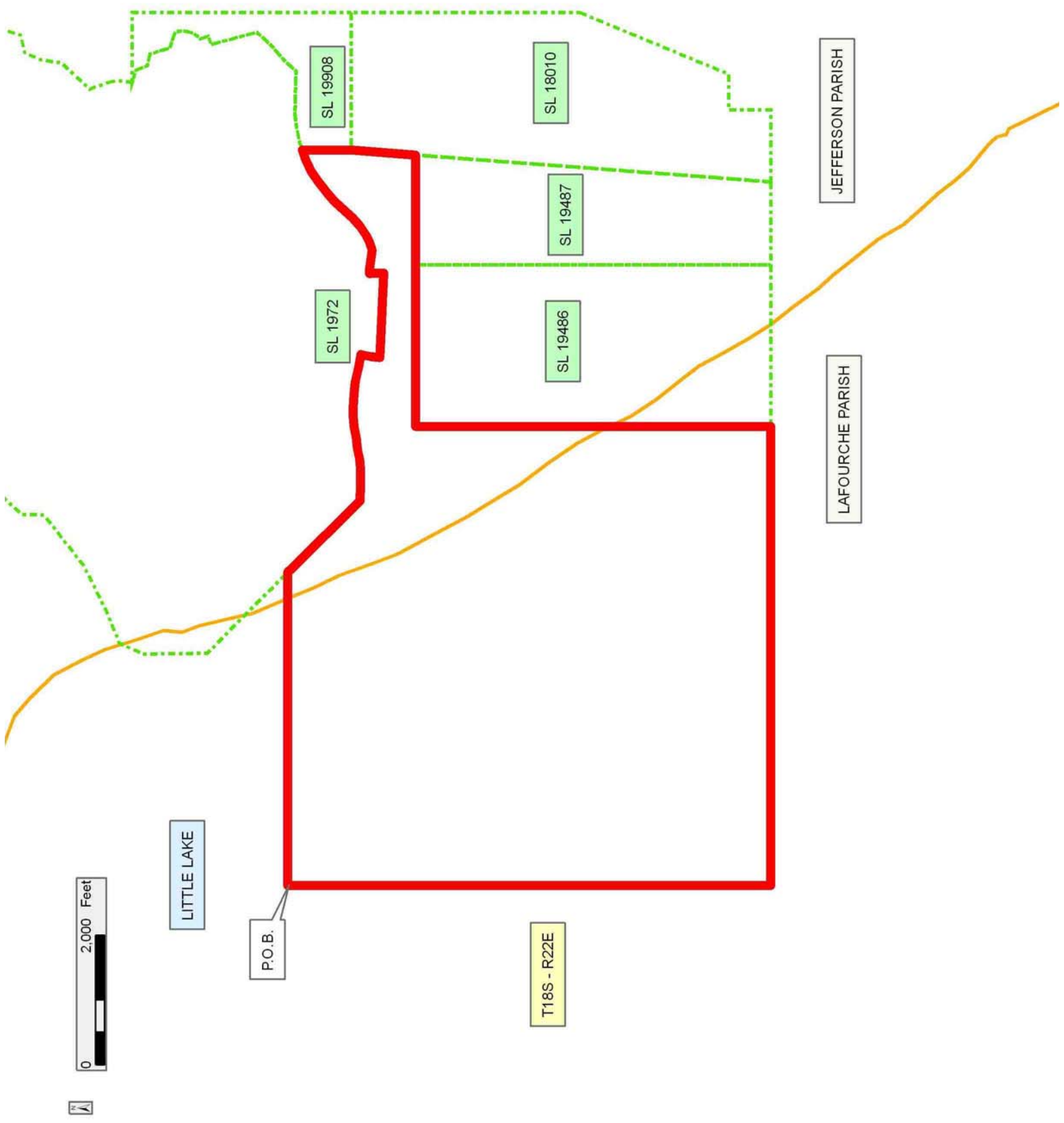
NOTE: The Department of Wildlife and Fisheries has designated certain areas in the coastal waters of the State of Louisiana as Oyster Seed Bed Areas. The exact location of those Seed Bed Areas must be obtained from the Department of Wildlife and Fisheries and any work done under a mineral lease from the State of Louisiana may necessarily be conducted in conformity with the rules and regulations promulgated by the said Department of Wildlife and Fisheries for Oyster Seed Bed Areas.

Applicant: ALJ ENERGY

Bidder	Cash Payment	Price/Acre	Rental	Oil	Gas	Other

Legend

- 090500035
- Active_Leases
- Counties



TRACT 40970 - Jefferson Parish, Louisiana

All of the lands now or formerly constituting the beds and bottoms of all water bodies of every nature and description as to which title is vested in the State of Louisiana, together with all islands arising therein and other lands formed by accretion or by reliction, where allowed by law, excepting tax adjudicated lands, and not presently under mineral lease on May 13, 2009, situated in Jefferson Parish, Louisiana, and more particularly described as follows: Beginning at a point having Coordinates of X = 2,388,700.00 and Y = 312,054.09; thence East 13,511.50 feet to the Northwest corner of State Lease No. 18727 having Coordinates of X = 2,402,211.50 and Y = 312,054.09; thence along the boundary of said State Lease No. 18727 the following courses: South 2,783.01 feet to a point having Coordinates of X = 2,402,211.50 and Y = 309,271.09; West 2,676.69 feet to a point having Coordinates of X = 2,399,534.81 and Y = 309,271.09; South 46 degrees 45 minutes 27 seconds West 2,877.88 feet to a point having Coordinates of X = 2,397,438.40 and Y = 307,299.48 and South 63 degrees 17 minutes 15 seconds East 4,653.95 feet to its Southernmost corner having Coordinates of X = 2,401,595.65 and Y = 305,207.46; thence West 12,895.65 feet to a point having Coordinates of X = 2,388,700.00 and Y = 305,207.46; thence North 6,846.63 feet to the point of beginning, containing approximately **1,400 acres**, all as more particularly outlined on a plat on file in the Office of Mineral Resources, Department of Natural Resources. All bearings, distances and coordinates are based on Louisiana Coordinate System of 1927, (North or South Zone), where applicable.

NOTE: The above description of the Tract nominated for lease has been provided and corrected, where required, exclusively by the nomination party. Any mineral lease selected from this Tract and awarded by the Louisiana State Mineral Board shall be without warranty of any kind, either express, implied, or statutory, including, but not limited to, the implied warranties of merchantability and fitness for a particular purpose. Should the mineral lease awarded by the Louisiana State Mineral Board be subsequently modified, cancelled or abrogated due to the existence of conflicting leases, operating agreements, private claims or other future obligations or conditions which may affect all or any portion of the leased Tract, it shall not relieve the Lessee of the obligation to pay any bonus due thereon to the Louisiana State Mineral Board, nor shall the Louisiana State Mineral Board be obligated to refund any consideration paid by the Lessor prior to such modification, cancellation, or abrogation, including, but not limited to, bonuses, rentals and royalties.

NOTE: The State of Louisiana does hereby reserve, and this lease shall be subject to, the imprescriptible right of surface use in the nature of a servitude in favor of the Department of Natural Resources, including its Offices and Commissions, for the sole purpose of implementing, constructing, servicing and maintaining approved coastal zone management and/or restoration projects. Utilization of any and all rights derived under this lease by the mineral lessee, its agents, successors or assigns, shall not interfere with nor hinder the reasonable surface use by the

Department of Natural Resources, its Offices or Commissions, as herein above reserved.

NOTE: The Department of Wildlife and Fisheries has designated certain areas in the coastal waters of the State of Louisiana as Oyster Seed Bed Areas. The exact location of those Seed Bed Areas must be obtained from the Department of Wildlife and Fisheries and any work done under a mineral lease from the State of Louisiana may necessarily be conducted in conformity with the rules and regulations promulgated by the said Department of Wildlife and Fisheries for Oyster Seed Bed Areas.

Applicant: HAROLD J. ANDERSON, INC.

Bidder	Cash Payment	Price/Acre	Rental	Oil	Gas	Other

Legend
09050023
Active_Leases
DOQQ2004

LONG BAY

LITTLE LAKE

JEFFERSON PARISH

P.O.B.



BAYOU ST DENIS

SL 18727

T18S - R24E

BAYOU DOSGRIS

T18S - R23E

TRACT 40971 - Jefferson Parish, Louisiana

All of the lands now or formerly constituting the beds and bottoms of all water bodies of every nature and description as to which title is vested in the State of Louisiana, together with all islands arising therein and other lands formed by accretion or by reliction, where allowed by law, excepting tax adjudicated lands, and not presently under mineral lease on May 13, 2009, situated in Jefferson Parish, Louisiana, and more particularly described as follows: Beginning at a point having Coordinates of X = 2,406,374.45 and Y = 305,207.46; thence West 4,778.81 feet to the Southernmost corner of State Lease No. 18727 having Coordinates of X = 2,401,595.65 and Y = 305,207.46; thence along the boundary of said State Lease No. 18727 the following courses: North 36 degrees 44 minutes 15 seconds East 4,043.37 feet to a point having Coordinates of X = 2,404,014.19 and Y = 308,447.75; North 3,014.65 feet to a point having Coordinates of X = 2,404,014.19 and Y = 311,462.40; North 89 degrees 00 minutes 38 seconds East 1,796.29 feet to a point having Coordinates of X = 2,405,810.21 and Y = 311,493.42 and North 163.01 feet to its Northeast corner having Coordinates of X = 2,405,810.21 and Y = 311,656.43; thence East 9,139.40 feet to a point having Coordinates of X = 2,414,949.62 and Y = 311,656.43; thence Southerly approximately 8,148 feet to the Northwest corner of State Lease No. 4192, as amended; thence South approximately 3,200 feet along the West boundary of said State Lease No. 4192 to its Southwest corner; thence Southerly approximately 733 feet to a point having Coordinates of X = 2,414,949.62 and Y = 299,574.71; thence West 2,277.18 feet to a point having Coordinates of X = 2,412,672.44 and Y = 299,574.71; thence North 48 degrees 11 minutes 29 seconds West 8,449.41 feet to the point of beginning, **LESS AND EXCEPT** that portion, if any, of State Lease No. 4192, as amended, that may lie within the above described tract, (Above described tract includes only waterbottoms claimed and owned by the state and specifically excludes any land which the state may claim or own and to which the mineral rights are vested in the state), above described tract containing approximately **835 acres**, all as more particularly outlined on a plat on file in the Office of Mineral Resources, Department of Natural Resources. All bearings, distances and coordinates are based on Louisiana Coordinate System of 1927, (North or South Zone), where applicable.

NOTE: The above description of the Tract nominated for lease has been provided and corrected, where required, exclusively by the nomination party. Any mineral lease selected from this Tract and awarded by the Louisiana State Mineral Board shall be without warranty of any kind, either express, implied, or statutory, including, but not limited to, the implied warranties of merchantability and fitness for a particular purpose. Should the mineral lease awarded by the Louisiana State Mineral Board be subsequently modified, cancelled or abrogated due to the existence of conflicting leases, operating agreements, private claims or other future obligations or conditions which may affect all or any portion of the leased Tract, it shall not relieve the Lessee of the obligation to pay any bonus due thereon to the Louisiana State Mineral Board, nor shall

the Louisiana State Mineral Board be obligated to refund any consideration paid by the Lessor prior to such modification, cancellation, or abrogation, including, but not limited to, bonuses, rentals and royalties.

NOTE: The State of Louisiana does hereby reserve, and this lease shall be subject to, the imprescriptible right of surface use in the nature of a servitude in favor of the Department of Natural Resources, including its Offices and Commissions, for the sole purpose of implementing, constructing, servicing and maintaining approved coastal zone management and/or restoration projects. Utilization of any and all rights derived under this lease by the mineral lessee, its agents, successors or assigns, shall not interfere with nor hinder the reasonable surface use by the Department of Natural Resources, its Offices or Commissions, as herein above reserved.

NOTE: The Department of Wildlife and Fisheries has designated certain areas in the coastal waters of the State of Louisiana as Oyster Seed Bed Areas. The exact location of those Seed Bed Areas must be obtained from the Department of Wildlife and Fisheries and any work done under a mineral lease from the State of Louisiana may necessarily be conducted in conformity with the rules and regulations promulgated by the said Department of Wildlife and Fisheries for Oyster Seed Bed Areas.

Applicant: HAROLD J. ANDERSON, INC.

Bidder	Cash Payment	Price/Acre	Rental	Oil	Gas	Other

Legend
09050024
Active_Leases
DOQQ2004

THREE BAYOU BAY

BAYOU BARATARIA

SL 4192

JEFFERSON PARISH

BAYOU DOSGRIS

P.O.B.

T18S - R24E

0 2,000 Feet

SL 18727

BAYOU ST DENIS

TRACT 40972 - Jefferson Parish, Louisiana

All of the lands now or formerly constituting the beds and bottoms of all water bodies of every nature and description as to which title is vested in the State of Louisiana, together with all islands arising therein and other lands formed by accretion or by reliction, where allowed by law, excepting tax adjudicated lands, and not presently under mineral lease on May 13, 2009, situated in Jefferson Parish, Louisiana, and more particularly described as follows: Beginning at a point having Coordinates of X = 2,414,949.62 and Y = 311,656.43; thence East 6,840.75 feet to a point having Coordinates of X = 2,421,790.37 and Y = 311,656.43; thence South 00 degrees 53 minutes 00 seconds East 5,166.79 feet to the Northwest corner of State Lease No. 19282 having Coordinates of X = 2,421,870.01 and Y = 306,490.25; thence South 00 degrees 53 minutes 00 seconds East 2,982.53 feet along the West boundary of said State Lease No. 19282 to a point on the North boundary of State Lease No. 4192, as amended, having Coordinates of X = 2,421,915.98 and Y = 303,508.07; thence Westerly approximately 6,966 feet along the North boundary of said State Lease No. 4192 to its Northwest corner; thence Northerly approximately 8,148 feet to the point of beginning, **LESS AND EXCEPT** that portion, if any, of State Lease No. 4192, as amended, that may lie within the above described tract, (Above described tract includes only waterbottoms claimed and owned by the state and specifically excludes any land which the state may claim or own and to which the mineral rights are vested in the state), above described tract containing approximately **232 acres**, all as more particularly outlined on a plat on file in the Office of Mineral Resources, Department of Natural Resources. All bearings, distances and coordinates are based on Louisiana Coordinate System of 1927, (North or South Zone), where applicable.

NOTE: The above description of the Tract nominated for lease has been provided and corrected, where required, exclusively by the nomination party. Any mineral lease selected from this Tract and awarded by the Louisiana State Mineral Board shall be without warranty of any kind, either express, implied, or statutory, including, but not limited to, the implied warranties of merchantability and fitness for a particular purpose. Should the mineral lease awarded by the Louisiana State Mineral Board be subsequently modified, cancelled or abrogated due to the existence of conflicting leases, operating agreements, private claims or other future obligations or conditions which may affect all or any portion of the leased Tract, it shall not relieve the Lessee of the obligation to pay any bonus due thereon to the Louisiana State Mineral Board, nor shall the Louisiana State Mineral Board be obligated to refund any consideration paid by the Lessor prior to such modification, cancellation, or abrogation, including, but not limited to, bonuses, rentals and royalties.

NOTE: The State of Louisiana does hereby reserve, and this lease shall be subject to, the imprescriptible right of surface use in the nature of a servitude in favor of the Department of Natural Resources, including its Offices and Commissions, for the sole purpose of implementing,

constructing, servicing and maintaining approved coastal zone management and/or restoration projects. Utilization of any and all rights derived under this lease by the mineral lessee, its agents, successors or assigns, shall not interfere with nor hinder the reasonable surface use by the Department of Natural Resources, its Offices or Commissions, as herein above reserved.

Applicant: HAROLD J. ANDERSON, INC.

Bidder	Cash Payment	Price/Acre	Rental	Oil	Gas	Other

Legend
09050025
Active_Leases
DOQQ2004

THREE BAYOU BAY



JEFFERSON PARISH

BAYOU BARATARIA

P.O.B.



SL 19282

SL 4192

BAYOU ST DENIS

T18S - R24E

BAYOU DOSGRIS

TRACT 40973 - Jefferson and Lafourche Parishes, Louisiana

All of the lands now or formerly constituting the beds and bottoms of all water bodies of every nature and description as to which title is vested in the State of Louisiana, together with all islands arising therein and other lands formed by accretion or by reliction, where allowed by law, excepting tax adjudicated lands, and not presently under mineral lease on May 13, 2009, situated in Jefferson and Lafourche Parishes, Louisiana, and more particularly described as follows: Beginning at a point having Coordinates of X = 2,367,005.34 and Y = 308,680.00; thence East 6,064.66 feet to the Southwest corner of State Lease 19486 having Coordinates of X = 2,373,070.00 and Y = 308,680.00; thence East 2,500.00 feet along the South boundary of said State Lease No. 19486 to its Southeast corner, also being the Southwest corner of State Lease No. 19487 having Coordinates of X = 2,375,570.00 and Y = 308,680.00; thence East 1,289.26 feet along the South boundary of said State Lease No. 19487 to its Southeast corner, also being the Southwest corner of State Lease No. 18010, as amended, having Coordinates of X = 2,376,859.26 and Y = 308,680.00; thence East 1,110.74 feet along the South boundary of said State Lease No. 18010 to its Southeast corner, also being a point on the West boundary of the Northern portion of State Lease No. 2383, as amended, having Coordinates of X = 2,377,970.00 and Y = 308,680.00; thence along the boundary of the Northern portion of said State Lease No. 2383 the following courses: South 1,879.99 feet to a point having Coordinates of X = 2,377,970.00 and Y = 306,800.00; East 830.00 feet to a point having Coordinates of X = 2,378,799.98 and Y = 306,800.00; South 78 degrees 41 minutes 24 seconds East 305.94 feet to a point having Coordinates of X = 2,379,099.98 and Y = 306,740.00; South 59 degrees 02 minutes 11 seconds East 233.24 feet to a point having Coordinates of X = 2,379,299.98 and Y = 306,620.00; South 38 degrees 22 minutes 04 seconds East 306.10 feet to a point having Coordinates of X = 2,379,489.98 and Y = 306,380.01; South 15 degrees 56 minutes 43 seconds East 436.81 feet to a point having Coordinates of X = 2,379,609.98 and Y = 305,960.00; South 07 degrees 35 minutes 41 seconds West 636.64 feet to a point having Coordinates of X = 2,379,525.84 and Y = 305,328.95; South 38 degrees 55 minutes 37 seconds East 165.76 feet to a point having Coordinates of x = 2,379,629.99 and Y = 305,200.00; South 44 degrees 01 minutes 44 seconds East 208.63 feet to a point having Coordinates of X = 2,379,774.99 and Y = 305,049.99; South 77 degrees 18 minutes 02 seconds East 363.90 feet to a point having Coordinates of X = 2,380,129.99 and Y = 304,969.99; South 78 degrees 01 minutes 26 seconds East 337.34 feet to a point having Coordinates of X = 2,380,459.99 and Y = 304,900.00; North 77 degrees 16 minutes 32 seconds East 317.81 feet to a point having Coordinates of X = 2,380,769.99 and Y = 304,970.00; North 68 degrees 33 minutes 08 seconds East 150.42 feet to a point having Coordinates of X = 2,380,910.00 and Y = 305,025.00; North 59 degrees 35 minutes 20 seconds East 266.69 feet to a point having Coordinates of X = 2,381,140.00 and Y = 305,160.00; North 59 degrees 48 minutes 59 seconds East 238.71 feet to a point having Coordinates of X = 2,381,346.34 and Y = 305,280.02; South 30 degrees 31 minutes 09 seconds West 406.30 feet to a point having coordinates of X = 2,381,140.01 and Y = 304,930.00; South 35 degrees 45

minutes 14 seconds West 154.03 feet to a point having Coordinates of X = 2,381,050.01 and Y = 304,805.00; South 36 degrees 23 minutes 04 seconds West 236.01 feet to a point having Coordinates of X = 2,380,910.01 and Y = 304,615.00 and North 85 degrees 45 minutes 49 seconds East 398.06 feet to a point having Coordinates of X = 2,381,306.99 and Y = 304,644.41; thence South approximately 1,689 feet to a point on the North boundary of the Southern portion of said State Lease No. 2383 having a Coordinate of X = 2,381,306.99; thence Westerly, Northwesterly and Southerly along the meanders of the boundary of the Southern portion of said State Lease No. 2383 to a point of intersection with an East-West line having a Coordinate of Y = 301,131.90; thence West approximately 10,078 feet along said line to a point having Coordinates of X = 2,367,005.34 and Y = 301,131.90; thence North 7,548.10 feet to the point of beginning, **LESS AND EXCEPT** that portion, if any, of said State Lease No. 2383 which may lie within the above described tract, containing approximately **2,018 acres**, all as more particularly outlined on a plat on file in the Office of Mineral Resources, Department of Natural Resources. All bearings, distances and coordinates are based on Louisiana Coordinate System of 1927, (North or South Zone), where applicable.

NOTE: The above description of the Tract nominated for lease has been provided and corrected, where required, exclusively by the nomination party. Any mineral lease selected from this Tract and awarded by the Louisiana State Mineral Board shall be without warranty of any kind, either express, implied, or statutory, including, but not limited to, the implied warranties of merchantability and fitness for a particular purpose. Should the mineral lease awarded by the Louisiana State Mineral Board be subsequently modified, cancelled or abrogated due to the existence of conflicting leases, operating agreements, private claims or other future obligations or conditions which may affect all or any portion of the leased Tract, it shall not relieve the Lessee of the obligation to pay any bonus due thereon to the Louisiana State Mineral Board, nor shall the Louisiana State Mineral Board be obligated to refund any consideration paid by the Lessor prior to such modification, cancellation, or abrogation, including, but not limited to, bonuses, rentals and royalties.

NOTE: The State of Louisiana does hereby reserve, and this lease shall be subject to, the imprescriptible right of surface use in the nature of a servitude in favor of the Department of Natural Resources, including its Offices and Commissions, for the sole purpose of implementing, constructing, servicing and maintaining approved coastal zone management and/or restoration projects. Utilization of any and all rights derived under this lease by the mineral lessee, its agents, successors or assigns, shall not interfere with nor hinder the reasonable surface use by the Department of Natural Resources, its Offices or Commissions, as herein above reserved.

NOTE: The Department of Wildlife and Fisheries has designated certain areas in the coastal waters of the State of Louisiana as Oyster Seed Bed

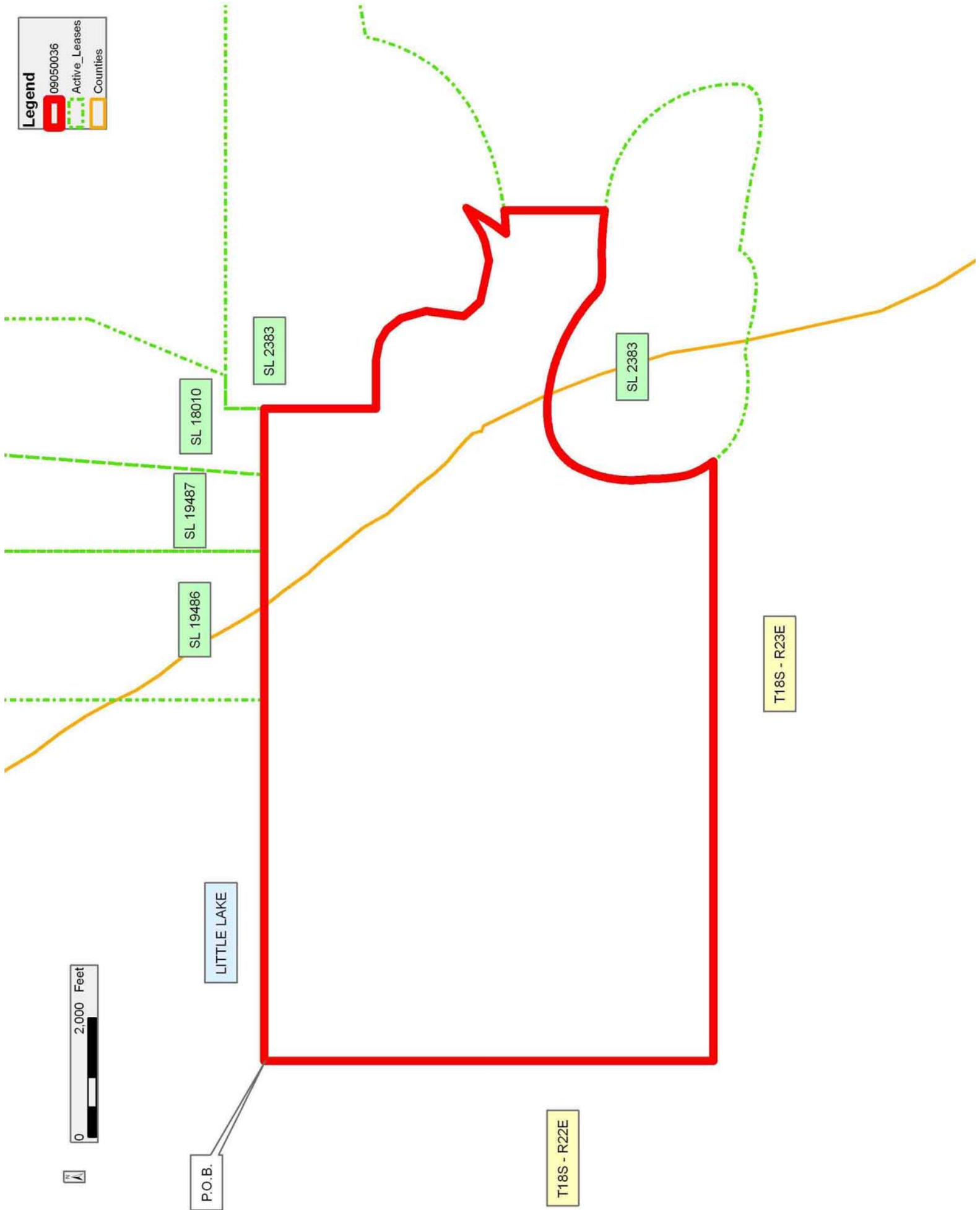
Areas. The exact location of those Seed Bed Areas must be obtained from the Department of Wildlife and Fisheries and any work done under a mineral lease from the State of Louisiana may necessarily be conducted in conformity with the rules and regulations promulgated by the said Department of Wildlife and Fisheries for Oyster Seed Bed Areas.

Applicant: ALJ ENERGY

Bidder	Cash Payment	Price/Acre	Rental	Oil	Gas	Other

Legend

- 090500036
- Active_Leases
- Counties



TRACT 40974 - Jefferson Parish, Louisiana

All of the lands now or formerly constituting the beds and bottoms of all water bodies of every nature and description as to which title is vested in the State of Louisiana, together with all islands arising therein and other lands formed by accretion or by reliction, where allowed by law, excepting tax adjudicated lands, and not presently under mineral lease on May 13, 2009, situated in Jefferson Parish, Louisiana, and more particularly described as follows: Beginning at the Northwest corner of State Lease No. 19041 having Coordinates of X = 2,386,040.00 and Y = 301,186.00; thence West approximately 2,653 feet to a point of intersection with the Eastern boundary of the Southern portion of State Lease No. 2383, as amended, having a Coordinate of Y = 301,186.00; thence Northerly and Northwesterly along the meanders of the boundary of the Southern portion of said State Lease No. 2383 to a point of intersection with a North-South line having a Coordinate of X = 2,381,306.99; thence North approximately 1,689 feet along said line to a point of intersection with Southern boundary of the Northern portion of said State Lease No. 2383 having Coordinates of X = 2,381,306.99 and Y = 304,644.41; thence along the boundary of the Northern portion of said State Lease No. 2383 the following courses: North 85 degrees 45 minutes 49 seconds East 8.05 feet to a point having Coordinates of X = 2,381,315.01 and Y = 304,645.00; North 79 degrees 26 minutes 20 seconds East 300.08 feet to a point having Coordinates of X = 2,381,610.01 and Y = 304,700.00; North 77 degrees 46 minutes 30 seconds East 306.96 feet to a point having Coordinates of X = 2,381,910.01 and Y = 304,765.00; North 74 degrees 09 minutes 25 seconds East 384.61 feet to a point having Coordinates of X = 2,382,280.01 and Y = 304,870.00; North 67 degrees 14 minutes 56 seconds East 336.15 feet to a point having Coordinates of X = 2,382,590.00 and Y = 305,000.00; North 65 degrees 33 minutes 22 seconds East 362.49 feet to a point having Coordinates of X = 2,382,920.00 and Y = 305,150.00; North 57 degrees 08 minutes 39 seconds East 285.70 feet to a point having Coordinates of X = 2,383,160.00 and Y = 305,305.00; North 53 degrees 34 minutes 09 seconds East 261.01 feet to a point having Coordinates X = 2,383,370.00 and Y = 305,460.00; North 46 degrees 21 minutes 50 seconds East 297.07 feet to a point having Coordinates of X = 2,383,585.00 and Y = 305,665.00; North 39 degrees 25 minutes 40 seconds East 291.29 feet to a point having Coordinates of X = 2,383,770.00 and Y = 305,890.00; North 31 degrees 07 minutes 21 seconds East 309.56 feet to a point having Coordinates of X = 2,383,930.01 and Y = 306,155.00; North 25 degrees 25 minutes 37 seconds East 337.71 feet to a point having Coordinates of X = 2,384,075.01 and Y = 306,460.00; North 17 degrees 42 minutes 02 seconds East 246.68 feet to a point having Coordinates of X = 2,384,150.01 and Y = 306,695.00; North 14 degrees 02 minutes 10 seconds East 288.62 feet to a point having Coordinates of X = 2,384,220.01 and Y = 306,975.00 and North 79 degrees 49 minutes 14 seconds East 1,417.30 feet to a point having Coordinates of X = 2,385,615.00 and Y = 307,225.48; thence East 3,085.00 feet to a point having Coordinates of X = 2,388,700.00 and Y = 307,225.48; thence South 6,039.48 feet to a point on the North boundary of said State Lease No. 19041 having Coordinates of X = 2,388,700.00 and Y = 301,186.00; thence

West 2,660.00 feet along the North boundary of said State Lease No. 19041 to the point of beginning, **LESS AND EXCEPT** that portion, if any, of said State Lease No. 2383 which may lie within the above described tract, containing approximately **721 acres**, all as more particularly outlined on a plat on file in the Office of Mineral Resources, Department of Natural Resources. All bearings, distances and coordinates are based on Louisiana Coordinate System of 1927, (North or South Zone), where applicable.

NOTE: The above description of the Tract nominated for lease has been provided and corrected, where required, exclusively by the nomination party. Any mineral lease selected from this Tract and awarded by the Louisiana State Mineral Board shall be without warranty of any kind, either express, implied, or statutory, including, but not limited to, the implied warranties of merchantability and fitness for a particular purpose. Should the mineral lease awarded by the Louisiana State Mineral Board be subsequently modified, cancelled or abrogated due to the existence of conflicting leases, operating agreements, private claims or other future obligations or conditions which may affect all or any portion of the leased Tract, it shall not relieve the Lessee of the obligation to pay any bonus due thereon to the Louisiana State Mineral Board, nor shall the Louisiana State Mineral Board be obligated to refund any consideration paid by the Lessor prior to such modification, cancellation, or abrogation, including, but not limited to, bonuses, rentals and royalties.

NOTE: The State of Louisiana does hereby reserve, and this lease shall be subject to, the imprescriptible right of surface use in the nature of a servitude in favor of the Department of Natural Resources, including its Offices and Commissions, for the sole purpose of implementing, constructing, servicing and maintaining approved coastal zone management and/or restoration projects. Utilization of any and all rights derived under this lease by the mineral lessee, its agents, successors or assigns, shall not interfere with nor hinder the reasonable surface use by the Department of Natural Resources, its Offices or Commissions, as herein above reserved.

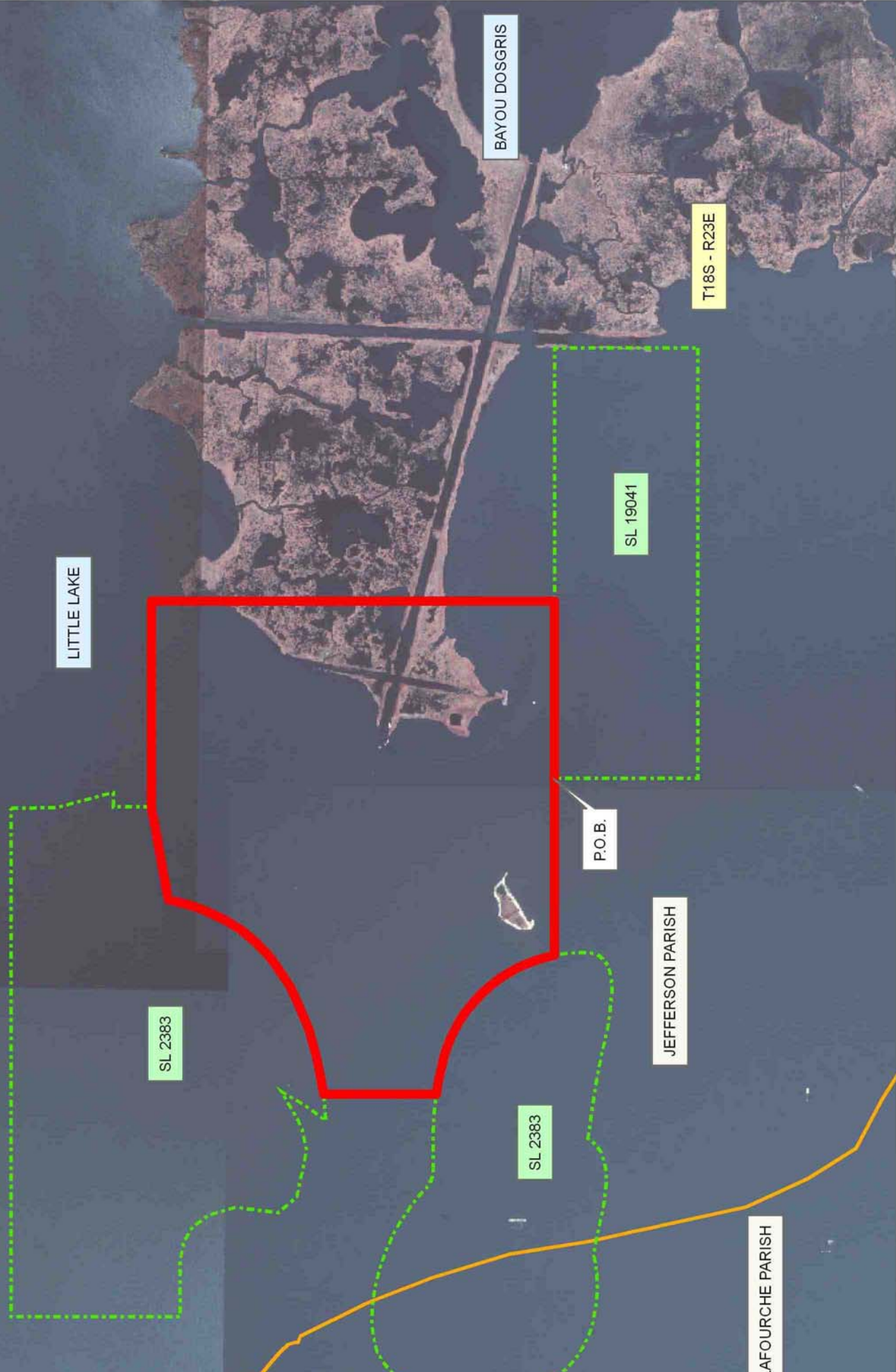
NOTE: The Department of Wildlife and Fisheries has designated certain areas in the coastal waters of the State of Louisiana as Oyster Seed Bed Areas. The exact location of those Seed Bed Areas must be obtained from the Department of Wildlife and Fisheries and any work done under a mineral lease from the State of Louisiana may necessarily be conducted in conformity with the rules and regulations promulgated by the said Department of Wildlife and Fisheries for Oyster Seed Bed Areas.

Applicant: ALJ ENERGY

Bidder	Cash Payment	Price/Acre	Rental	Oil	Gas	Other

Legend

- 09050038
- Active_Leases
- Countries
- DOQQ2004



TRACT 40975 - Jefferson and Lafourche Parishes, Louisiana

All of the lands now or formerly constituting the beds and bottoms of all water bodies of every nature and description as to which title is vested in the State of Louisiana, together with all islands arising therein and other lands formed by accretion or by reliction, where allowed by law, excepting tax adjudicated lands, and not presently under mineral lease on May 13, 2009, situated in Jefferson and Lafourche Parishes, Louisiana, and more particularly described as follows: Beginning at a point having Coordinates of X = 2,394,200.00 and Y = 305,207.46; thence South 6,307.46 feet to the Northeast corner of State Lease No. 19038 having Coordinates of X = 2,394,200.00 and Y = 298,900.00; thence West 2,185.81 feet along the North boundary of said State Lease No. 19038 to its Northwest corner, also being the Northeast corner of State Lease No. 19039 having Coordinates of X = 2,392,014.19 and Y = 298,900.00; thence along the boundary of said State Lease No. 19039 the following courses: West 1,514.19 feet to its Northwest corner having Coordinates of X = 2,390,500.00 and Y = 298,900.00; South 3,000.00 feet to its Southwest corner having Coordinates of X = 2,390,500.00 and Y = 295,900.00 and East 900.00 feet to the Northwest corner of State Lease No. 19040 having Coordinates of X = 2,391,400.00 and Y = 295,900.00; thence South 4,243.00 feet along the West boundary of said State Lease No. 19040 to its Southwest corner, also being a point on the North boundary of State Lease No. 18405 having Coordinates of X = 2,391,400.00 and Y = 291,657.00; thence West 1,956.00 feet along the North boundary of said State Lease No. 18405 to its Northwest corner having Coordinates of X = 2,389,444.00 and Y = 291,657.00; thence West 244.00 feet to a point having Coordinates of X = 2,389,200.00 and Y = 291,657.00; thence North 00 degrees 06 minutes 12 seconds East 7,386.01 feet to a point on the South boundary of State Lease No. 19041 having Coordinates of X = 2,389,213.32 and Y = 299,043.00; thence along the boundary of said State Lease No. 19041 the following courses: East 3,280.68 feet to its Southeast corner having Coordinates of X = 2,392,494.00 and Y = 299,043.00; North 2,143.00 feet to its Northeast corner having Coordinates of X = 2,392,494.00 and Y = 301,186.00 and West 3,794.00 feet to a point on its North boundary having Coordinates of X = 2,388,700.00 and Y = 301,186.00; thence North 4,021.46 feet to a point having Coordinates of X = 2,388,700.00 and Y = 305,207.46; thence East 5,500.00 feet to the point of beginning, containing approximately **450 acres**, all as more particularly outlined on a plat on file in the Office of Mineral Resources, Department of Natural Resources. All bearings, distances and coordinates are based on Louisiana Coordinate System of 1927, (North or South Zone), where applicable.

NOTE: The above description of the Tract nominated for lease has been provided and corrected, where required, exclusively by the nomination party. Any mineral lease selected from this Tract and awarded by the Louisiana State Mineral Board shall be without warranty of any kind, either express, implied, or statutory, including, but not limited to, the implied warranties of merchantability and fitness for a particular purpose. Should the mineral lease awarded by the Louisiana State Mineral

Board be subsequently modified, cancelled or abrogated due to the existence of conflicting leases, operating agreements, private claims or other future obligations or conditions which may affect all or any portion of the leased Tract, it shall not relieve the Lessee of the obligation to pay any bonus due thereon to the Louisiana State Mineral Board, nor shall the Louisiana State Mineral Board be obligated to refund any consideration paid by the Lessor prior to such modification, cancellation, or abrogation, including, but not limited to, bonuses, rentals and royalties.

NOTE: The State of Louisiana does hereby reserve, and this lease shall be subject to, the imprescriptible right of surface use in the nature of a servitude in favor of the Department of Natural Resources, including its Offices and Commissions, for the sole purpose of implementing, constructing, servicing and maintaining approved coastal zone management and/or restoration projects. Utilization of any and all rights derived under this lease by the mineral lessee, its agents, successors or assigns, shall not interfere with nor hinder the reasonable surface use by the Department of Natural Resources, its Offices or Commissions, as herein above reserved.

NOTE: The Department of Wildlife and Fisheries has designated certain areas in the coastal waters of the State of Louisiana as Oyster Seed Bed Areas. The exact location of those Seed Bed Areas must be obtained from the Department of Wildlife and Fisheries and any work done under a mineral lease from the State of Louisiana may necessarily be conducted in conformity with the rules and regulations promulgated by the said Department of Wildlife and Fisheries for Oyster Seed Bed Areas.

Applicant: HAROLD J. ANDERSON, INC.

Bidder	Cash Payment	Price/Acre	Rental	Oil	Gas	Other

Legend

- 09050027
- Active_Leases
- Counties
- DOQQ2004

P.O.B.

T18S - R23E

BAYOU DOSGRIS

GRAND BAYOU

T19S - R23E

SL 19038

SL 19040

SL 19039

SL 18405

SL 19041

JEFFERSON PARISH

LITTLE LAKE

LAFOURCHE PARISH

