

TRACT 40956 - St. John The Baptist Parish, Louisiana

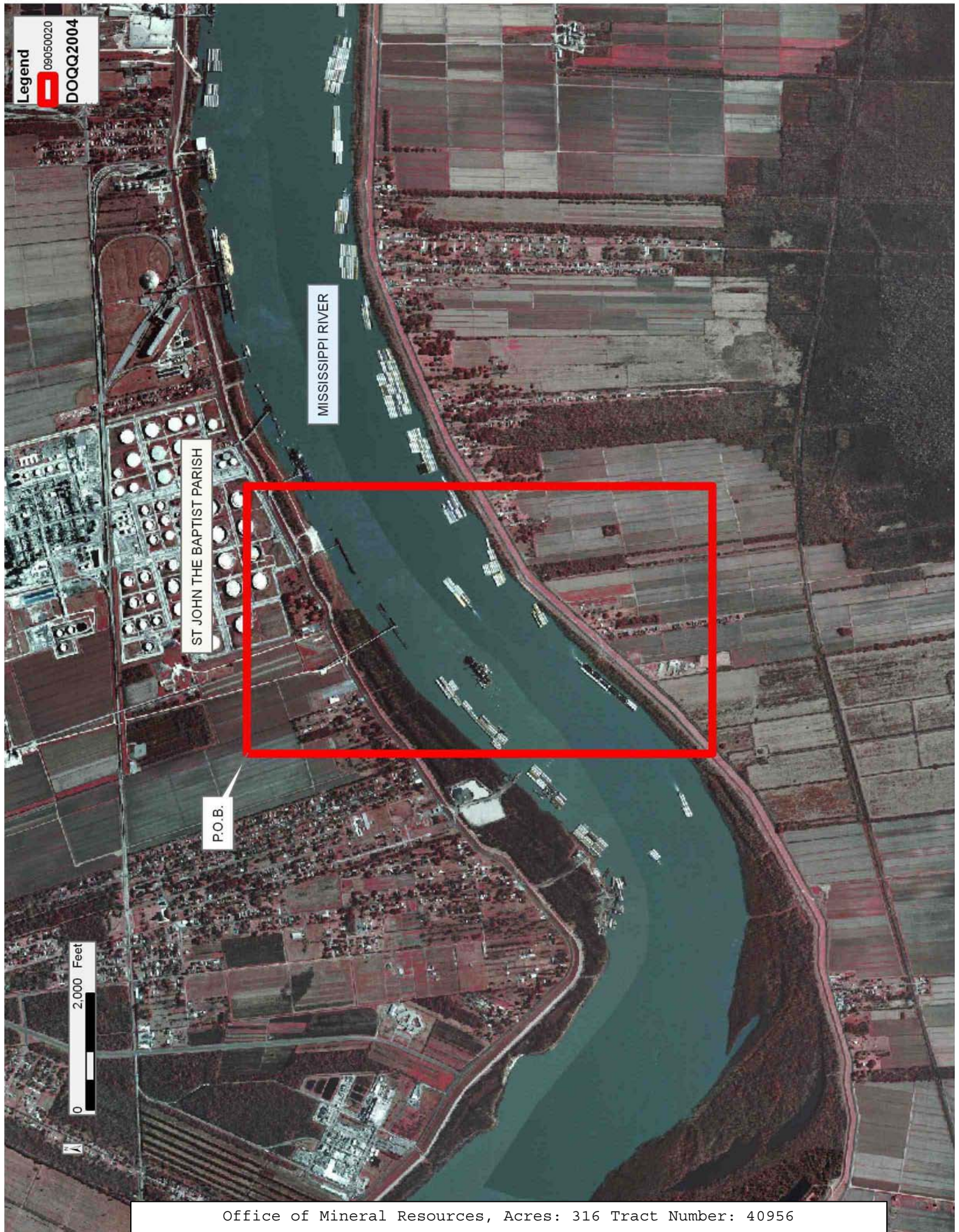
All of the lands now or formerly constituting the beds and bottoms of all water bodies of every nature and description as to which title is vested in the State of Louisiana, together with all islands arising therein and other lands formed by accretion or by reliction, where allowed by law, excepting tax adjudicated lands, and not presently under mineral lease on May 13, 2009, situated in St. John The Baptist Parish, Louisiana, and more particularly described as follows: Beginning at a point having Coordinates of X = 2,228,900.00 and Y = 504,725.00; thence East 4,600.00 feet to a point having Coordinates of X = 2,233,500.00 and Y = 504,725.00; thence South 8,000.00 feet to a point having Coordinates of X = 2,233,500.00 and Y = 496,725.00; thence West 4,600.00 feet to a point having Coordinates of X = 2,228,900.00 and Y = 496,725.00; thence North 8,000.00 feet to the point of beginning, containing approximately **316 acres**, all as more particularly outlined on a plat on file in the Office of Mineral Resources, Department of Natural Resources. All bearings, distances and coordinates are based on Louisiana Coordinate System of 1927, (North or South Zone), where applicable.

NOTE: The above description of the Tract nominated for lease has been provided and corrected, where required, exclusively by the nomination party. Any mineral lease selected from this Tract and awarded by the Louisiana State Mineral Board shall be without warranty of any kind, either express, implied, or statutory, including, but not limited to, the implied warranties of merchantability and fitness for a particular purpose. Should the mineral lease awarded by the Louisiana State Mineral Board be subsequently modified, cancelled or abrogated due to the existence of conflicting leases, operating agreements, private claims or other future obligations or conditions which may affect all or any portion of the leased Tract, it shall not relieve the Lessee of the obligation to pay any bonus due thereon to the Louisiana State Mineral Board, nor shall the Louisiana State Mineral Board be obligated to refund any consideration paid by the Lessor prior to such modification, cancellation, or abrogation, including, but not limited to, bonuses, rentals and royalties.

NOTE: The State of Louisiana does hereby reserve, and this lease shall be subject to, the imprescriptible right of surface use in the nature of a servitude in favor of the Department of Natural Resources, including its Offices and Commissions, for the sole purpose of implementing, constructing, servicing and maintaining approved coastal zone management and/or restoration projects. Utilization of any and all rights derived under this lease by the mineral lessee, its agents, successors or assigns, shall not interfere with nor hinder the reasonable surface use by the Department of Natural Resources, its Offices or Commissions, as herein above reserved.

Applicant: MCGINTY-DURHAM, INC.

Bidder	Cash Payment	Price/ Acre	Rental	Oil	Gas	Other



TRACT 40957 - St. John The Baptist Parish, Louisiana

All of the lands now or formerly constituting the beds and bottoms of all water bodies of every nature and description as to which title is vested in the State of Louisiana, together with all islands arising therein and other lands formed by accretion or by reliction, where allowed by law, excepting tax adjudicated lands, and not presently under mineral lease on May 13, 2009, situated in St. John The Baptist Parish, Louisiana, and more particularly described as follows: Beginning at a point having Coordinates of X = 2,222,600.00 and Y = 500,815.00; thence East 6,300.00 feet to a point having Coordinates of X = 2,228,900.00 and Y = 500,815.00; thence South 5,700.00 feet to a point having Coordinates of X = 2,228,900.00 and Y = 495,115.00; thence West 6,300.00 feet to a point having Coordinates of X = 2,222,600.00 and Y = 495,115.00; thence North 5,700.00 feet to the point of beginning, containing approximately **440 acres**, all as more particularly outlined on a plat on file in the Office of Mineral Resources, Department of Natural Resources. All bearings, distances and coordinates are based on Louisiana Coordinate System of 1927, (North or South Zone), where applicable.

NOTE: The above description of the Tract nominated for lease has been provided and corrected, where required, exclusively by the nomination party. Any mineral lease selected from this Tract and awarded by the Louisiana State Mineral Board shall be without warranty of any kind, either express, implied, or statutory, including, but not limited to, the implied warranties of merchantability and fitness for a particular purpose. Should the mineral lease awarded by the Louisiana State Mineral Board be subsequently modified, cancelled or abrogated due to the existence of conflicting leases, operating agreements, private claims or other future obligations or conditions which may affect all or any portion of the leased Tract, it shall not relieve the Lessee of the obligation to pay any bonus due thereon to the Louisiana State Mineral Board, nor shall the Louisiana State Mineral Board be obligated to refund any consideration paid by the Lessor prior to such modification, cancellation, or abrogation, including, but not limited to, bonuses, rentals and royalties.

NOTE: The State of Louisiana does hereby reserve, and this lease shall be subject to, the imprescriptible right of surface use in the nature of a servitude in favor of the Department of Natural Resources, including its Offices and Commissions, for the sole purpose of implementing, constructing, servicing and maintaining approved coastal zone management and/or restoration projects. Utilization of any and all rights derived under this lease by the mineral lessee, its agents, successors or assigns, shall not interfere with nor hinder the reasonable surface use by the Department of Natural Resources, its Offices or Commissions, as herein above reserved.

Applicant: MCGINTY-DURHAM, INC.

Bidder	Cash Payment	Price/ Acre	Rental	Oil	Gas	Other

Legend
09050021
DOQQ2004

MISSISSIPPI RIVER

ST JOHN THE BAPTIST PARISH

P.O.B.

2,000 Feet

0

TRACT 40958 - Plaquemines and St. Bernard Parishes, Louisiana

All of the lands now or formerly constituting the beds and bottoms of all water bodies of every nature and description as to which title is vested in the State of Louisiana, together with all islands arising therein and other lands formed by accretion or by reliction, where allowed by law, excepting tax adjudicated lands, and not presently under mineral lease on May 13, 2009, situated in Plaquemines and St. Bernard Parishes, Louisiana, and more particularly described as follows: Beginning at a point having Coordinates of X = 2,477,766.00 and Y = 419,095.00; thence East 10,983.00 feet to a point having Coordinates of X = 2,488,749.00 and Y = 419,095.00; thence South 4,129.00 feet to the Northeast corner of State Lease No. 19189 having Coordinates of X = 2,488,749.00 and Y = 414,966.00; thence along the boundary of said State Lease No. 19189 the following courses: West 4,175.00 feet and South 2,471.50 feet to its Westernmost Southwest corner, also being the Northernmost Northeast corner of State Lease No. 19638 having Coordinates of X = 2,484,574.00 and Y = 412,494.50; thence West 3,052.70 feet along the Northern boundary of said State Lease No. 19638 to its Northwest corner having Coordinates of X = 2,481,521.30 and Y = 412,494.50; thence West 3,755.30 feet to a point having Coordinates of X = 2,477,766.00 and Y = 412,494.50; thence North 6,600.50 feet to the point of beginning, containing approximately **1,162 acres**, all as more particularly outlined on a plat on file in the Office of Mineral Resources, Department of Natural Resources. All bearings, distances and coordinates are based on Louisiana Coordinate System of 1927, (North or South Zone), where applicable.

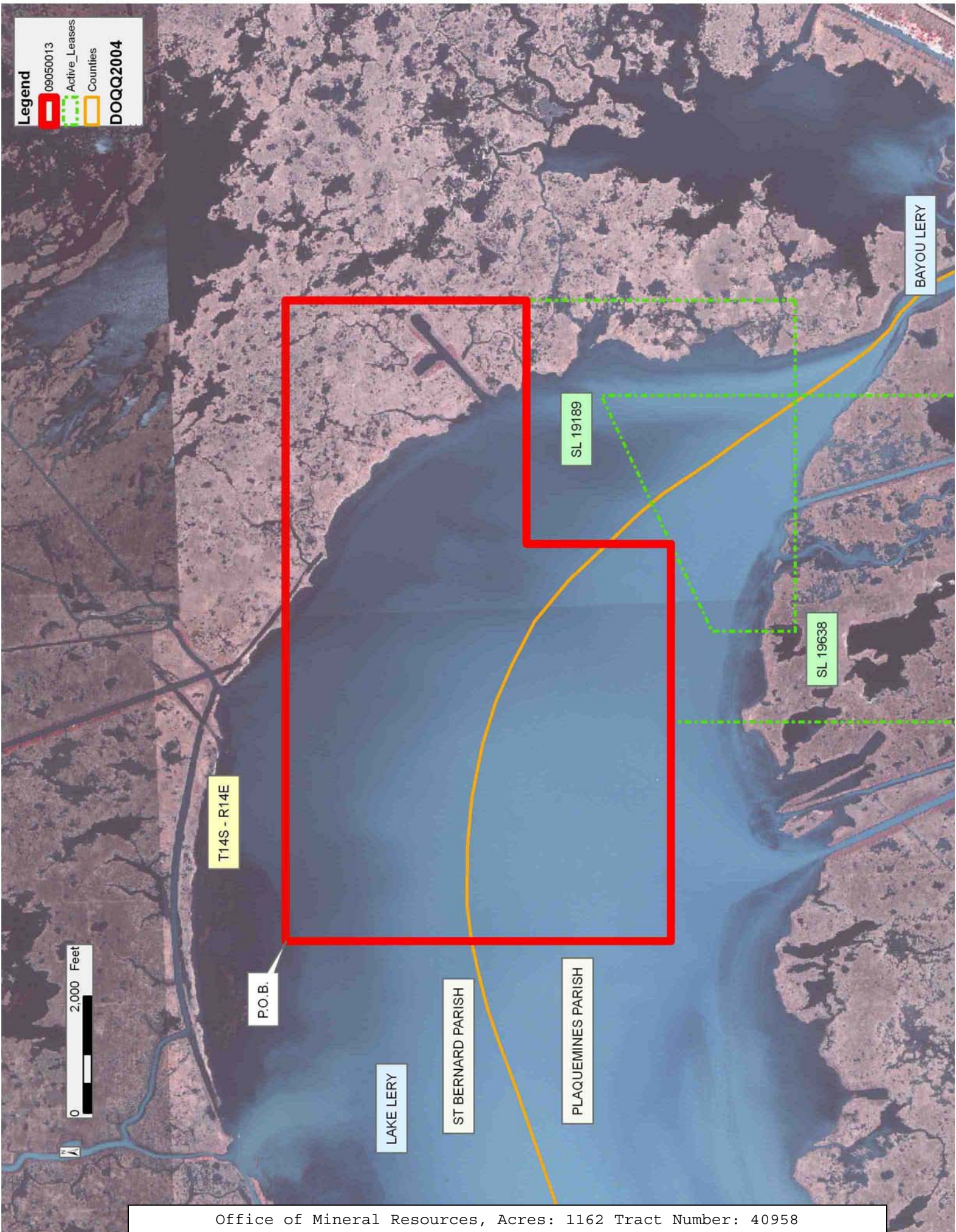
NOTE: The above description of the Tract nominated for lease has been provided and corrected, where required, exclusively by the nomination party. Any mineral lease selected from this Tract and awarded by the Louisiana State Mineral Board shall be without warranty of any kind, either express, implied, or statutory, including, but not limited to, the implied warranties of merchantability and fitness for a particular purpose. Should the mineral lease awarded by the Louisiana State Mineral Board be subsequently modified, cancelled or abrogated due to the existence of conflicting leases, operating agreements, private claims or other future obligations or conditions which may affect all or any portion of the leased Tract, it shall not relieve the Lessee of the obligation to pay any bonus due thereon to the Louisiana State Mineral Board, nor shall the Louisiana State Mineral Board be obligated to refund any consideration paid by the Lessor prior to such modification, cancellation, or abrogation, including, but not limited to, bonuses, rentals and royalties.

NOTE: The State of Louisiana does hereby reserve, and this lease shall be subject to, the imprescriptible right of surface use in the nature of a servitude in favor of the Department of Natural Resources, including its Offices and Commissions, for the sole purpose of implementing, constructing, servicing and maintaining approved coastal zone management and/or restoration projects. Utilization of any and all rights derived under this lease by the mineral lessee, its agents, successors or assigns,

shall not interfere with nor hinder the reasonable surface use by the Department of Natural Resources, its Offices or Commissions, as herein above reserved.

Applicant: PALO DURO INVESTMENTS

Bidder	Cash Payment	Price/ Acre	Rental	Oil	Gas	Other



TRACT 40959 - Plaquemines and St. Bernard Parishes, Louisiana

All of the lands now or formerly constituting the beds and bottoms of all water bodies of every nature and description as to which title is vested in the State of Louisiana, together with all islands arising therein and other lands formed by accretion or by reliction, where allowed by law, excepting tax adjudicated lands, and not presently under mineral lease on May 13, 2009, situated in Plaquemines and St. Bernard Parishes, Louisiana, and more particularly described as follows: Beginning at a point having Coordinates of X = 2,488,749.00 and Y = 417,924.00; thence East 7,629.00 feet to a point having Coordinates of X = 2,496,378.00 and Y = 417,924.00; thence South 12,953.00 feet to a point having Coordinates of X = 2,496,378.00 and Y = 404,971.00; thence West 9,262.47 feet to a point having Coordinates of X = 2,487,115.53 and Y = 404,971.00; thence North 2,507.50 feet to the Southeast corner of State Lease No. 19638 having Coordinates of X = 2,487,115.53 and Y = 407,478.50; thence North 2,887.50 feet along the Eastern boundary of said State Lease No. 19638 to its Easternmost Northeast corner, also being the Southernmost Southwest corner of State Lease No. 19189 having Coordinates of X = 2,487,115.53 and Y = 410,366.00; thence along the boundary of said State Lease No. 19189 the following courses: East 1,633.47 feet and North 4,600.00 feet to its Northeast corner having Coordinates of X = 2,488,749.00 and Y = 414,966.00; thence North 2,958.00 feet to the point of beginning, containing approximately **653 acres**, all as more particularly outlined on a plat on file in the Office of Mineral Resources, Department of Natural Resources. All bearings, distances and coordinates are based on Louisiana Coordinate System of 1927, (North or South Zone), where applicable.

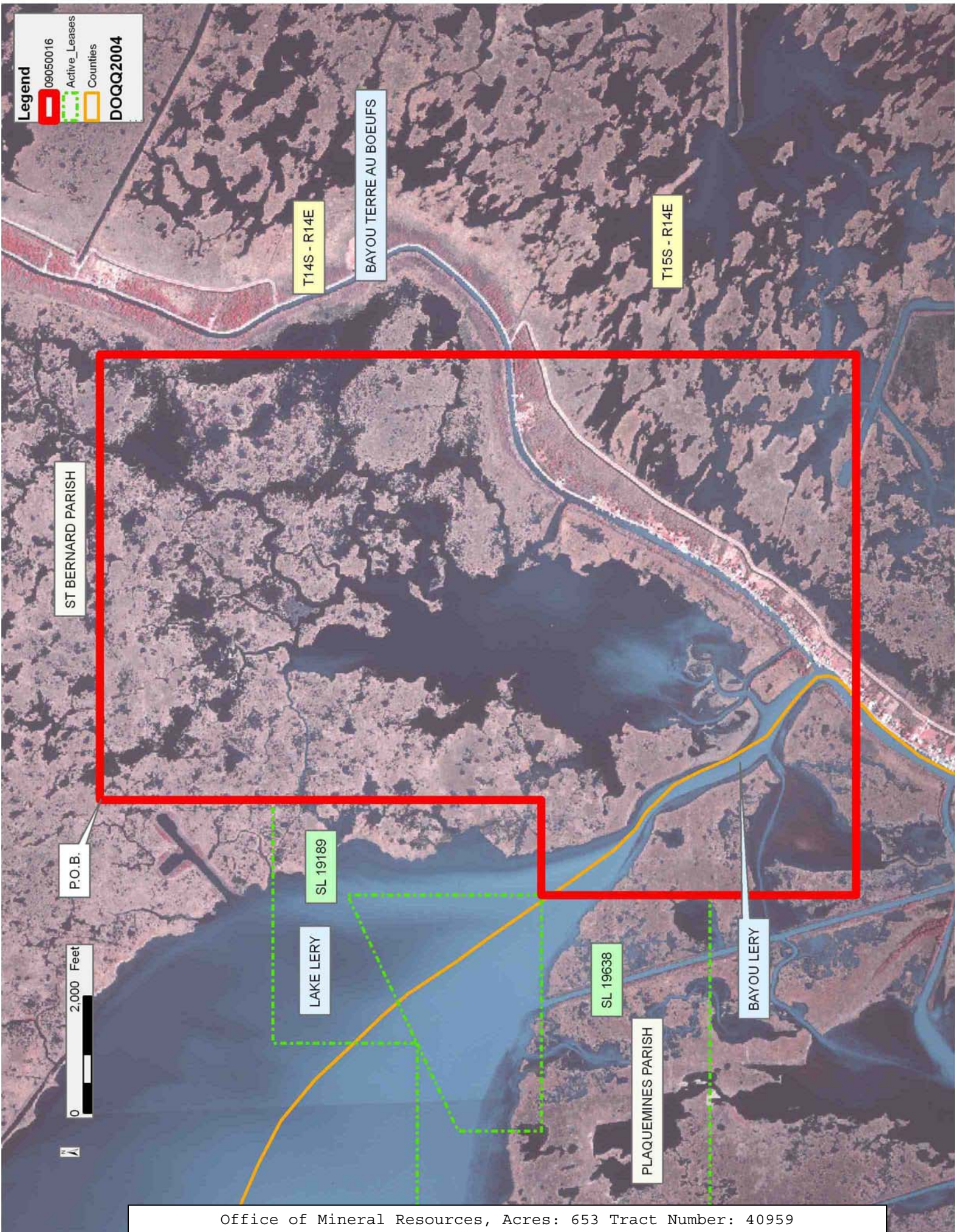
NOTE: The above description of the Tract nominated for lease has been provided and corrected, where required, exclusively by the nomination party. Any mineral lease selected from this Tract and awarded by the Louisiana State Mineral Board shall be without warranty of any kind, either express, implied, or statutory, including, but not limited to, the implied warranties of merchantability and fitness for a particular purpose. Should the mineral lease awarded by the Louisiana State Mineral Board be subsequently modified, cancelled or abrogated due to the existence of conflicting leases, operating agreements, private claims or other future obligations or conditions which may affect all or any portion of the leased Tract, it shall not relieve the Lessee of the obligation to pay any bonus due thereon to the Louisiana State Mineral Board, nor shall the Louisiana State Mineral Board be obligated to refund any consideration paid by the Lessor prior to such modification, cancellation, or abrogation, including, but not limited to, bonuses, rentals and royalties.

NOTE: The State of Louisiana does hereby reserve, and this lease shall be subject to, the imprescriptible right of surface use in the nature of a servitude in favor of the Department of Natural Resources, including its Offices and Commissions, for the sole purpose of implementing, constructing, servicing and maintaining approved coastal zone management and/or restoration projects. Utilization of any and all rights derived

under this lease by the mineral lessee, its agents, successors or assigns, shall not interfere with nor hinder the reasonable surface use by the Department of Natural Resources, its Offices or Commissions, as herein above reserved.

Applicant: PALO DURO INVESTMENTS

Bidder	Cash Payment	Price/ Acre	Rental	Oil	Gas	Other



TRACT 40960 - Plaquemines and St. Bernard Parishes, Louisiana

All of the lands now or formerly constituting the beds and bottoms of all water bodies of every nature and description as to which title is vested in the State of Louisiana, together with all islands arising therein and other lands formed by accretion or by reliction, where allowed by law, excepting tax adjudicated lands, and not presently under mineral lease on May 13, 2009, situated in Plaquemines and St. Bernard Parishes, Louisiana, and more particularly described as follows: Beginning at an interior corner of State Lease No. 19638 having Coordinates of X = 2,483,074.00 and Y = 410,366.00; thence along the boundary of said State Lease No. 19638 the following courses: North 1,424.59 feet and North 64 degrees 51 minutes 38 seconds East 1,656.95 feet to its Northernmost Northeast corner, also being the Westernmost Southwest corner of State Lease No. 19189 having Coordinates of X = 2,484,574.00 and Y = 412,494.50; thence along the boundary of said State Lease No. 19189 the following courses: North 64 degrees 51 minutes 38 seconds East 2,807.46 feet and South 3,321.17 feet to its Southernmost Southwest corner, also being the Southernmost Northeast corner of said State Lease No. 19638 having Coordinates of X = 2,487,115.53 and Y = 410,366.00; thence West 4,041.53 feet along the boundary of said State Lease No. 19638 to the point of beginning, containing approximately **205 acres**, all as more particularly outlined on a plat on file in the Office of Mineral Resources, Department of Natural Resources. All bearings, distances and coordinates are based on Louisiana Coordinate System of 1927, (North or South Zone), where applicable.

NOTE: The above description of the Tract nominated for lease has been provided and corrected, where required, exclusively by the nomination party. Any mineral lease selected from this Tract and awarded by the Louisiana State Mineral Board shall be without warranty of any kind, either express, implied, or statutory, including, but not limited to, the implied warranties of merchantability and fitness for a particular purpose. Should the mineral lease awarded by the Louisiana State Mineral Board be subsequently modified, cancelled or abrogated due to the existence of conflicting leases, operating agreements, private claims or other future obligations or conditions which may affect all or any portion of the leased Tract, it shall not relieve the Lessee of the obligation to pay any bonus due thereon to the Louisiana State Mineral Board, nor shall the Louisiana State Mineral Board be obligated to refund any consideration paid by the Lessor prior to such modification, cancellation, or abrogation, including, but not limited to, bonuses, rentals and royalties.

NOTE: The State of Louisiana does hereby reserve, and this lease shall be subject to, the imprescriptible right of surface use in the nature of a servitude in favor of the Department of Natural Resources, including its Offices and Commissions, for the sole purpose of implementing, constructing, servicing and maintaining approved coastal zone management and/or restoration projects. Utilization of any and all rights derived under this lease by the mineral lessee, its agents, successors or assigns, shall not interfere with nor hinder the reasonable surface use by the

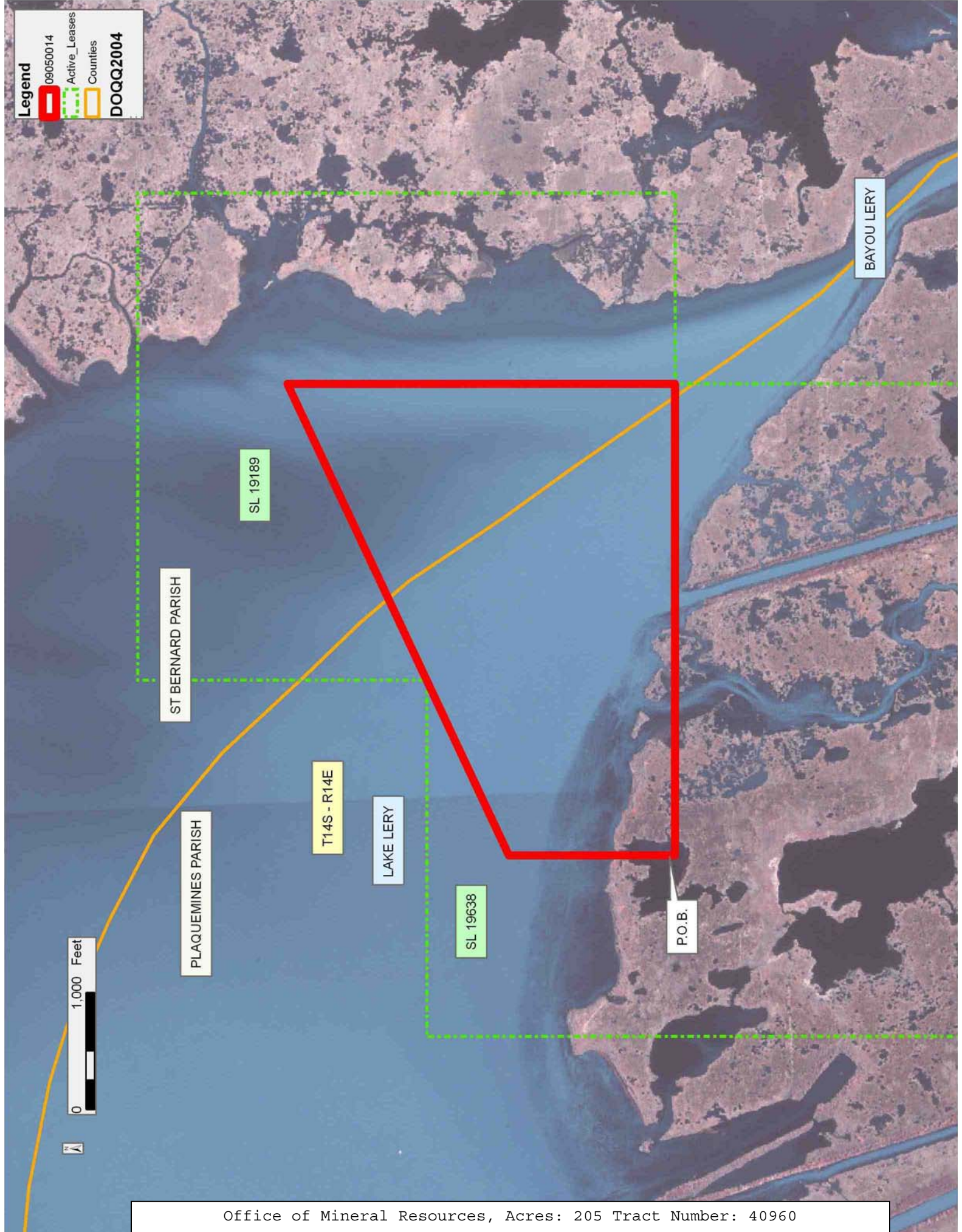
Department of Natural Resources, its Offices or Commissions, as herein above reserved.

Applicant: PALO DURO INVESTMENTS

Bidder	Cash Payment	Price/ Acre	Rental	Oil	Gas	Other

Legend

- 09050014
- Active_Leases
- Counties
- DOQQ2004



TRACT 40961 - Plaquemines Parish, Louisiana

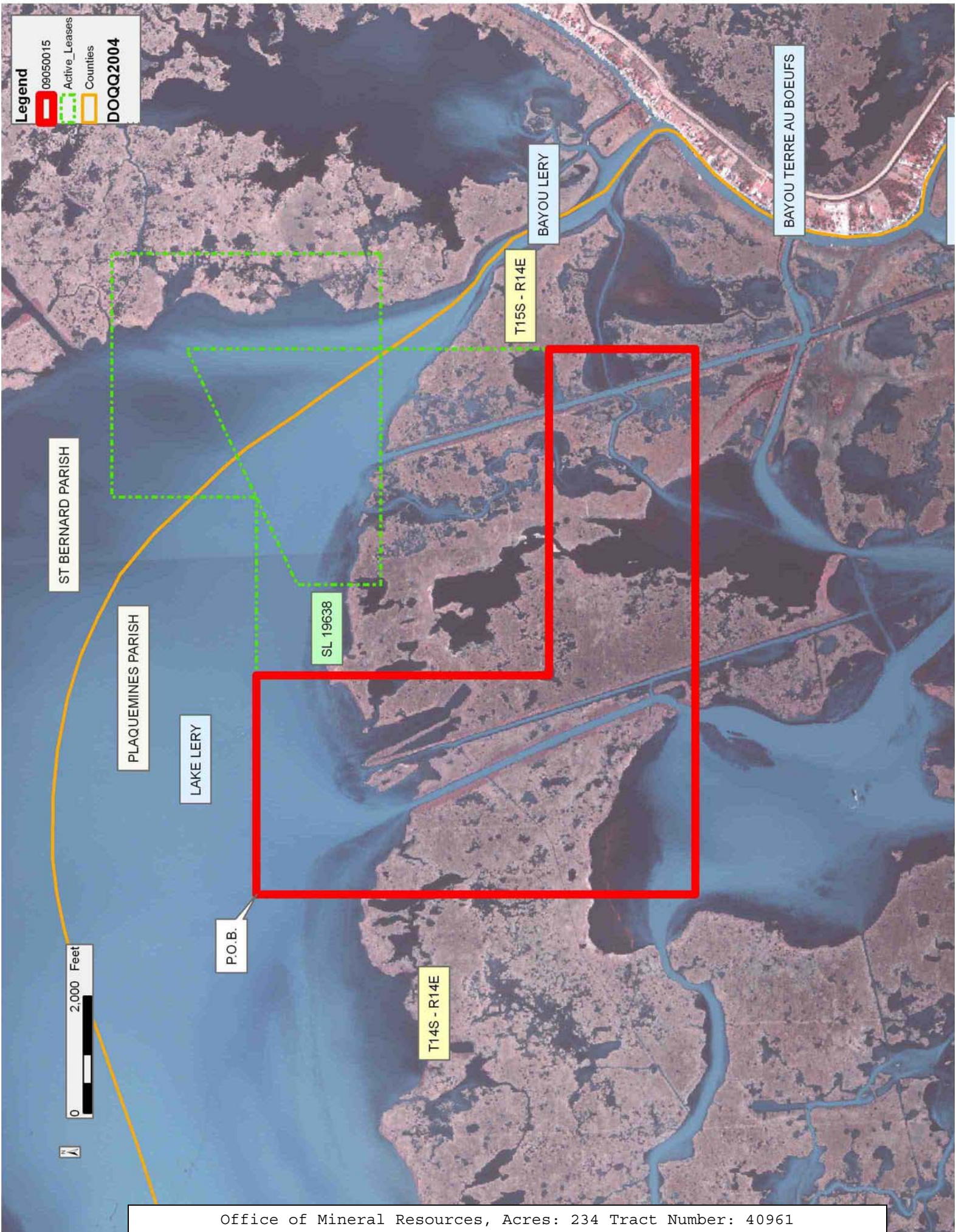
All of the lands now or formerly constituting the beds and bottoms of all water bodies of every nature and description as to which title is vested in the State of Louisiana, together with all islands arising therein and other lands formed by accretion or by reliction, where allowed by law, excepting tax adjudicated lands, and not presently under mineral lease on May 13, 2009, situated in Plaquemines Parish, Louisiana, and more particularly described as follows: Beginning at a point having Coordinates of X = 2,477,766.00 and Y = 412,494.50; thence East 3,755.30 feet to the Northwest corner of State Lease No. 19638 having Coordinates of X = 2,481,521.30 and Y = 412,494.50; thence along the boundary of said State Lease No. 19638 the following courses: South 5,016.00 feet and East 5,594.23 feet to its Southeast corner having Coordinates of X = 2,487,115.53 and Y = 407,478.50; thence South 2,507.50 feet to a point having Coordinates of X = 2,487,115.53 and Y = 404,971.00; thence West 9,349.53 feet to a point having Coordinates of X = 2,477,766.00 and Y = 404,971.00; thence North 7,523.50 feet to the point of beginning, containing approximately **234 acres**, all as more particularly outlined on a plat on file in the Office of Mineral Resources, Department of Natural Resources. All bearings, distances and coordinates are based on Louisiana Coordinate System of 1927, (North or South Zone), where applicable.

NOTE: The above description of the Tract nominated for lease has been provided and corrected, where required, exclusively by the nomination party. Any mineral lease selected from this Tract and awarded by the Louisiana State Mineral Board shall be without warranty of any kind, either express, implied, or statutory, including, but not limited to, the implied warranties of merchantability and fitness for a particular purpose. Should the mineral lease awarded by the Louisiana State Mineral Board be subsequently modified, cancelled or abrogated due to the existence of conflicting leases, operating agreements, private claims or other future obligations or conditions which may affect all or any portion of the leased Tract, it shall not relieve the Lessee of the obligation to pay any bonus due thereon to the Louisiana State Mineral Board, nor shall the Louisiana State Mineral Board be obligated to refund any consideration paid by the Lessor prior to such modification, cancellation, or abrogation, including, but not limited to, bonuses, rentals and royalties.

NOTE: The State of Louisiana does hereby reserve, and this lease shall be subject to, the imprescriptible right of surface use in the nature of a servitude in favor of the Department of Natural Resources, including its Offices and Commissions, for the sole purpose of implementing, constructing, servicing and maintaining approved coastal zone management and/or restoration projects. Utilization of any and all rights derived under this lease by the mineral lessee, its agents, successors or assigns, shall not interfere with nor hinder the reasonable surface use by the Department of Natural Resources, its Offices or Commissions, as herein above reserved.

Applicant: PALO DURO INVESTMENTS

Bidder	Cash Payment	Price/ Acre	Rental	Oil	Gas	Other



Legend

- 09050015
- Active_Leases
- Counties
- DOQQ2004

ST BERNARD PARISH

PLAQUEMINES PARISH

LAKE LERY

P.O.B.

SL 19638

T15S - R14E

BAYOU LERY

BAYOU TERRE AU BOEUF

T14S - R14E

TRACT 40962 - Jefferson and Lafourche Parishes, Louisiana

All of the lands now or formerly constituting the beds and bottoms of all water bodies of every nature and description as to which title is vested in the State of Louisiana, together with all islands arising therein and other lands formed by accretion or by reliction, where allowed by law, excepting tax adjudicated lands, and not presently under mineral lease on May 13, 2009, situated in Jefferson and Lafourche Parishes, Louisiana, and more particularly described as follows: Beginning at a point having Coordinates of X = 2,368,807.00 and Y = 365,399.14; thence East 7,648.95 feet to a point having Coordinates of X = 2,376,455.95 and Y = 365,399.14; thence South 9,774.14 feet to a point having Coordinates of X = 2,376,455.95 and Y = 355,625.00; thence West 3,379.95 feet to the Southeast corner of State Lease No. 18651 having Coordinates of X = 2,373,076.00 and Y = 355,625.00; thence along the boundary of said State Lease No. 18651 the following courses: North 2,100.00 feet to a point having Coordinates of X = 2,373,076.00 and Y = 357,725.00, West 3,526.00 feet to a point having Coordinates of X = 2,369,550.00 and Y = 357,725.00 and South 2,100.00 feet to its Southwest corner having Coordinates of X = 2,369,550.00 and Y = 355,625.00; thence West 743.00 feet to a point on the East boundary of State Lease No. 19863 having Coordinates of X = 2,368,807.00 and Y = 355,625.00; thence North 2,775.00 feet along the East boundary of said State Lease No. 19863 to its Northeast corner having Coordinates of X = 2,368,807.00 and Y = 358,400.00; thence continue North 6,999.14 feet to the point of beginning, containing approximately **1,492 acres**, all as more particularly outlined on a plat on file in the Office of Mineral Resources, Department of Natural Resources. All bearings, distances and coordinates are based on Louisiana Coordinate System of 1927, (North or South Zone), where applicable.

NOTE: The above description of the Tract nominated for lease has been provided and corrected, where required, exclusively by the nomination party. Any mineral lease selected from this Tract and awarded by the Louisiana State Mineral Board shall be without warranty of any kind, either express, implied, or statutory, including, but not limited to, the implied warranties of merchantability and fitness for a particular purpose. Should the mineral lease awarded by the Louisiana State Mineral Board be subsequently modified, cancelled or abrogated due to the existence of conflicting leases, operating agreements, private claims or other future obligations or conditions which may affect all or any portion of the leased Tract, it shall not relieve the Lessee of the obligation to pay any bonus due thereon to the Louisiana State Mineral Board, nor shall the Louisiana State Mineral Board be obligated to refund any consideration paid by the Lessor prior to such modification, cancellation, or abrogation, including, but not limited to, bonuses, rentals and royalties.

NOTE: The State of Louisiana does hereby reserve, and this lease shall be subject to, the imprescriptible right of surface use in the nature of a servitude in favor of the Department of Natural Resources, including its Offices and Commissions, for the sole purpose of implementing,

constructing, servicing and maintaining approved coastal zone management and/or restoration projects. Utilization of any and all rights derived under this lease by the mineral lessee, its agents, successors or assigns, shall not interfere with nor hinder the reasonable surface use by the Department of Natural Resources, its Offices or Commissions, as herein above reserved.

Applicant: ALJ ENERGY

Bidder	Cash Payment	Price/ Acre	Rental	Oil	Gas	Other

Legend

09050009
Active_Leases
Counties
DOQQ2004

JEFFERSON PARISH

BAYOU PEROT

LAFOURCHE PARISH

SL 18651

T16S - R23E

P.O.B.

T17S - R23E

SL 19863

T17S - R22E

0 2,000 Feet

T16S - R22E

TRACT 40963 - Jefferson and Lafourche Parishes, Louisiana

All of the lands now or formerly constituting the beds and bottoms of all water bodies of every nature and description as to which title is vested in the State of Louisiana, together with all islands arising therein and other lands formed by accretion or by reliction, where allowed by law, excepting tax adjudicated lands, and not presently under mineral lease on May 13, 2009, situated in Jefferson and Lafourche Parishes, Louisiana, and more particularly described as follows: Beginning at a point on the East boundary of State Lease No. 19863 having Coordinates of X = 2,368,807.00 and Y = 355,625.00; thence East 743.00 feet to the Southwest corner of State Lease No. 18651 having Coordinates of X = 2,369,550.00 and Y = 355,625.00; thence East 3,526.00 feet along the South boundary of said State Lease No. 18651 to its Southeast corner having Coordinates of X = 2,373,076.00 and Y = 355,625.00; thence East 3,379.95 feet to a point having Coordinates of X = 2,376,455.95 and Y = 355,625.00; thence South 9,489.47 feet to a point having Coordinates of X = 2,376,455.95 and Y = 346,135.53; thence West 7,648.95 feet to a point having Coordinates of X = 2,368,807.00 and Y = 346,135.53; thence North 8,864.46 feet to the Southeast corner of said State Lease No. 19863 having Coordinates of X = 2,368,807.00 and Y = 355,000.00; thence North 625.00 feet along the East boundary of said State Lease No. 19863 to the point of beginning, **LESS AND EXCEPT** in its entirety, State Lease No. 18076, described as follows: Commencing at the point of beginning of the above described nominated tract having Coordinates of X = 2,368,807.00 and Y = 355,625.00; thence South 11 degrees 12 minutes 04 seconds East 3,927.82 feet to the Southwest corner of said State Lease No. 18076 having Coordinates of X = 2,369,570.00 and Y = 351,772.00; thence along the boundary of said State Lease No. 18076 the following courses: North 2,344.00 feet to a point having Coordinates of X = 2,369,570.00 and Y = 354,116.00; East 3,159.00 feet to a point having Coordinates of X = 2,372,729.00 and Y = 354,116.00; South 2,344.00 feet to a point having Coordinates of X = 2,372,729.00 and Y = 351,772.00 and West 3,159.00 feet back to its Southwest corner, the above described nominated tract containing approximately **1,461 acres**, all as more particularly outlined on a plat on file in the Office of Mineral Resources, Department of Natural Resources. All bearings, distances and coordinates are based on Louisiana Coordinate System of 1927, (North or South Zone), where applicable.

NOTE: The above description of the Tract nominated for lease has been provided and corrected, where required, exclusively by the nomination party. Any mineral lease selected from this Tract and awarded by the Louisiana State Mineral Board shall be without warranty of any kind, either express, implied, or statutory, including, but not limited to, the implied warranties of merchantability and fitness for a particular purpose. Should the mineral lease awarded by the Louisiana State Mineral Board be subsequently modified, cancelled or abrogated due to the existence of conflicting leases, operating agreements, private claims or other future obligations or conditions which may affect all or any portion of the leased Tract, it shall not relieve the Lessee of the obligation to

pay any bonus due thereon to the Louisiana State Mineral Board, nor shall the Louisiana State Mineral Board be obligated to refund any consideration paid by the Lessor prior to such modification, cancellation, or abrogation, including, but not limited to, bonuses, rentals and royalties.

NOTE: The State of Louisiana does hereby reserve, and this lease shall be subject to, the imprescriptible right of surface use in the nature of a servitude in favor of the Department of Natural Resources, including its Offices and Commissions, for the sole purpose of implementing, constructing, servicing and maintaining approved coastal zone management and/or restoration projects. Utilization of any and all rights derived under this lease by the mineral lessee, its agents, successors or assigns, shall not interfere with nor hinder the reasonable surface use by the Department of Natural Resources, its Offices or Commissions, as herein above reserved.

Applicant: ALJ ENERGY

Bidder	Cash Payment	Price/ Acre	Rental	Oil	Gas	Other

Legend

09050010
Active_Leases
Counties
DOQQ2004



TRACT 40964 - Jefferson and Lafourche Parishes, Louisiana

All of the lands now or formerly constituting the beds and bottoms of all water bodies of every nature and description as to which title is vested in the State of Louisiana, together with all islands arising therein and other lands formed by accretion or by reliction, where allowed by law, excepting tax adjudicated lands, and not presently under mineral lease on May 13, 2009, situated in Jefferson and Lafourche Parishes, Louisiana, and more particularly described as follows: Beginning at a point having Coordinates of X = 2,368,807.00 and Y = 346,135.53; thence East 8,422.90 feet to a point having Coordinates of X = 2,377,229.90 and Y = 346,135.53; thence South 10,650.73 feet to a point having Coordinates of X = 2,377,229.90 and Y = 335,484.80; thence West 8,422.90 feet to a point having Coordinates of X = 2,368,807.00 and Y = 335,484.80; thence North 10,650.73 feet to the point of beginning, containing approximately **1,624 acres**, all as more particularly outlined on a plat on file in the Office of Mineral Resources, Department of Natural Resources. All bearings, distances and coordinates are based on Louisiana Coordinate System of 1927, (North or South Zone), where applicable.

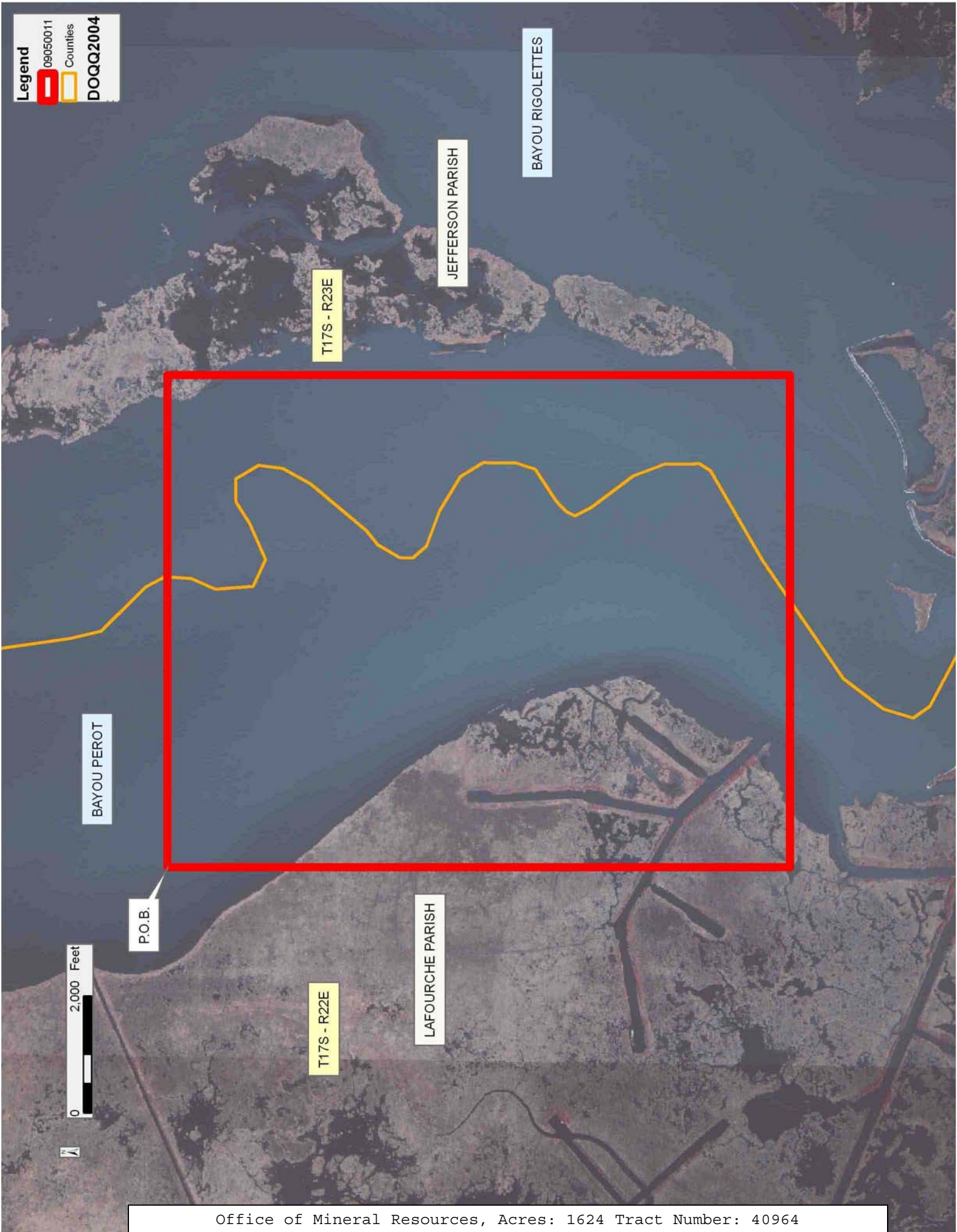
NOTE: The above description of the Tract nominated for lease has been provided and corrected, where required, exclusively by the nomination party. Any mineral lease selected from this Tract and awarded by the Louisiana State Mineral Board shall be without warranty of any kind, either express, implied, or statutory, including, but not limited to, the implied warranties of merchantability and fitness for a particular purpose. Should the mineral lease awarded by the Louisiana State Mineral Board be subsequently modified, cancelled or abrogated due to the existence of conflicting leases, operating agreements, private claims or other future obligations or conditions which may affect all or any portion of the leased Tract, it shall not relieve the Lessee of the obligation to pay any bonus due thereon to the Louisiana State Mineral Board, nor shall the Louisiana State Mineral Board be obligated to refund any consideration paid by the Lessor prior to such modification, cancellation, or abrogation, including, but not limited to, bonuses, rentals and royalties.

NOTE: The State of Louisiana does hereby reserve, and this lease shall be subject to, the imprescriptible right of surface use in the nature of a servitude in favor of the Department of Natural Resources, including its Offices and Commissions, for the sole purpose of implementing, constructing, servicing and maintaining approved coastal zone management and/or restoration projects. Utilization of any and all rights derived under this lease by the mineral lessee, its agents, successors or assigns, shall not interfere with nor hinder the reasonable surface use by the Department of Natural Resources, its Offices or Commissions, as herein above reserved.

Applicant: ALJ ENERGY

Bidder	Cash Payment	Price/ Acre	Rental	Oil	Gas	Other

Legend
09050011
Counties
DOQQ2004



TRACT 40965 - Jefferson Parish, Louisiana

All of the lands now or formerly constituting the beds and bottoms of all water bodies of every nature and description as to which title is vested in the State of Louisiana, together with all islands arising therein and other lands formed by accretion or by reliction, where allowed by law, excepting tax adjudicated lands, and not presently under mineral lease on May 13, 2009, situated in Jefferson Parish, Louisiana, and more particularly described as follows: Beginning at a point having Coordinates of X = 2,377,229.90 and Y = 346,135.53; thence East 8,422.90 feet to a point having Coordinates of X = 2,385,652.80 and Y = 346,135.53; thence South 10,650.73 feet to a point having Coordinates of X = 2,385,652.80 and Y = 335,484.80; thence West 8,422.90 feet to a point having Coordinates of X = 2,377,229.90 and Y = 335,484.80; thence North 10,650.73 feet to the point of beginning, containing approximately **1,541 acres**, all as more particularly outlined on a plat on file in the Office of Mineral Resources, Department of Natural Resources. All bearings, distances and coordinates are based on Louisiana Coordinate System of 1927, (North or South Zone), where applicable.

NOTE: The above description of the Tract nominated for lease has been provided and corrected, where required, exclusively by the nomination party. Any mineral lease selected from this Tract and awarded by the Louisiana State Mineral Board shall be without warranty of any kind, either express, implied, or statutory, including, but not limited to, the implied warranties of merchantability and fitness for a particular purpose. Should the mineral lease awarded by the Louisiana State Mineral Board be subsequently modified, cancelled or abrogated due to the existence of conflicting leases, operating agreements, private claims or other future obligations or conditions which may affect all or any portion of the leased Tract, it shall not relieve the Lessee of the obligation to pay any bonus due thereon to the Louisiana State Mineral Board, nor shall the Louisiana State Mineral Board be obligated to refund any consideration paid by the Lessor prior to such modification, cancellation, or abrogation, including, but not limited to, bonuses, rentals and royalties.

NOTE: The State of Louisiana does hereby reserve, and this lease shall be subject to, the imprescriptible right of surface use in the nature of a servitude in favor of the Department of Natural Resources, including its Offices and Commissions, for the sole purpose of implementing, constructing, servicing and maintaining approved coastal zone management and/or restoration projects. Utilization of any and all rights derived under this lease by the mineral lessee, its agents, successors or assigns, shall not interfere with nor hinder the reasonable surface use by the Department of Natural Resources, its Offices or Commissions, as herein above reserved.

Applicant: ALJ ENERGY

Bidder	Cash Payment	Price/ Acre	Rental	Oil	Gas	Other

Legend

09050012

Counties

DOQQ2004

BAYOU RIGOLETTES

JEFFERSON PARISH

P.O.B.

0 2,000 Feet

BAYOU PEROT

LAFOURCHE PARISH

T17S - R23E