

**TRACT 40946 - Ouachita and Richland Parishes, Louisiana**

All of the lands now or formerly constituting the beds and bottoms of all water bodies of every nature and description as to which title is vested in the State of Louisiana, together with all islands arising therein and other lands formed by accretion or by reliction, where allowed by law, excepting tax adjudicated lands, and not presently under mineral lease on May 13, 2009, situated in Ouachita and Richland Parishes, Louisiana, and more particularly described as follows: Beginning at a point having Coordinates of X = 2,168,025.00 and Y = 639,125.00; thence West 5,410.00 feet to a point having Coordinates of X = 2,162,615.00 and Y = 639,125.00; thence North approximately 28 feet to a point of intersection with the boundary of the Russell Sage Wildlife Management Area having a Coordinate of X = 2,162,615.00; thence Easterly, Northeasterly and Easterly along the meanders of the boundary of said Russell Sage Wildlife Management Area to a point of intersection with a North-South line having a Coordinate of X = 2,168,025.00; thence South approximately 4,009 feet along said North-South line to the point of beginning, **LESS AND EXCEPT** that portion, if any, of the Russell Sage Wildlife Management Area which may lie within the above described tract, containing approximately **5 acres**, all as more particularly outlined on a plat on file in the Office of Mineral Resources, Department of Natural Resources. All bearings, distances and coordinates are based on Louisiana Coordinate System of 1927, (North or South Zone), where applicable.

NOTE: The above description of the Tract nominated for lease has been provided and corrected, where required, exclusively by the nomination party. Any mineral lease selected from this Tract and awarded by the Louisiana State Mineral Board shall be without warranty of any kind, either express, implied, or statutory, including, but not limited to, the implied warranties of merchantability and fitness for a particular purpose. Should the mineral lease awarded by the Louisiana State Mineral Board be subsequently modified, cancelled or abrogated due to the existence of conflicting leases, operating agreements, private claims or other future obligations or conditions which may affect all or any portion of the leased Tract, it shall not relieve the Lessee of the obligation to pay any bonus due thereon to the Louisiana State Mineral Board, nor shall the Louisiana State Mineral Board be obligated to refund any consideration paid by the Lessor prior to such modification, cancellation, or abrogation, including, but not limited to, bonuses, rentals and royalties.

Bidder	Cash Payment	Price/Acre	Rental	Oil	Gas	Other

Applicant: THEOPHILUS OIL, GAS & LAND SERVICES, LLC



**Legend**

- 09050042
- Wildlife
- Counties
- DOQQ2004

T17N - R5E

RICHLAND PARISH

P.O.B.

RUSSELL SAGE WMA

OUACHITA PARISH

BAYOU LAFOURCHE

0 2,000 Feet





**TRACT 40947 - Lasalle Parish, Louisiana**

All of the lands now or formerly constituting the beds and bottoms of all water bodies of every nature and description as to which title is vested in the State of Louisiana, together with all islands arising therein and other lands formed by accretion or by reliction, where allowed by law, excepting tax adjudicated lands, and not presently under mineral lease on May 13, 2009, situated in Lasalle Parish, Louisiana, and more particularly described as follows: Beginning at a point on the North boundary of State Lease No. 18951 having Coordinates of X = 2,122,818.65 and Y = 322,259.98; thence North 00 degrees 09 minutes 55 seconds West 1,444.18 feet to a point having Coordinates of X = 2,122,814.48 and Y = 323,704.16; thence North 89 degrees 46 minutes 40 seconds East 1,320.00 feet to a point having Coordinates of X = 2,124,134.47 and Y = 323,709.28; thence South 00 degrees 09 minutes 55 seconds East 1,449.31 feet to a point on the North boundary of said State Lease No. 18951 having Coordinates of X = 2,124,138.65 and Y = 322,259.98; thence West 1,320.00 feet along the North boundary of said State Lease No. 18951 to the point of beginning, containing approximately **39 acres**, all as more particularly outlined on a plat on file in the Office of Mineral Resources, Department of Natural Resources. All bearings, distances and coordinates are based on Louisiana Coordinate System of 1927, (North or South Zone), where applicable.

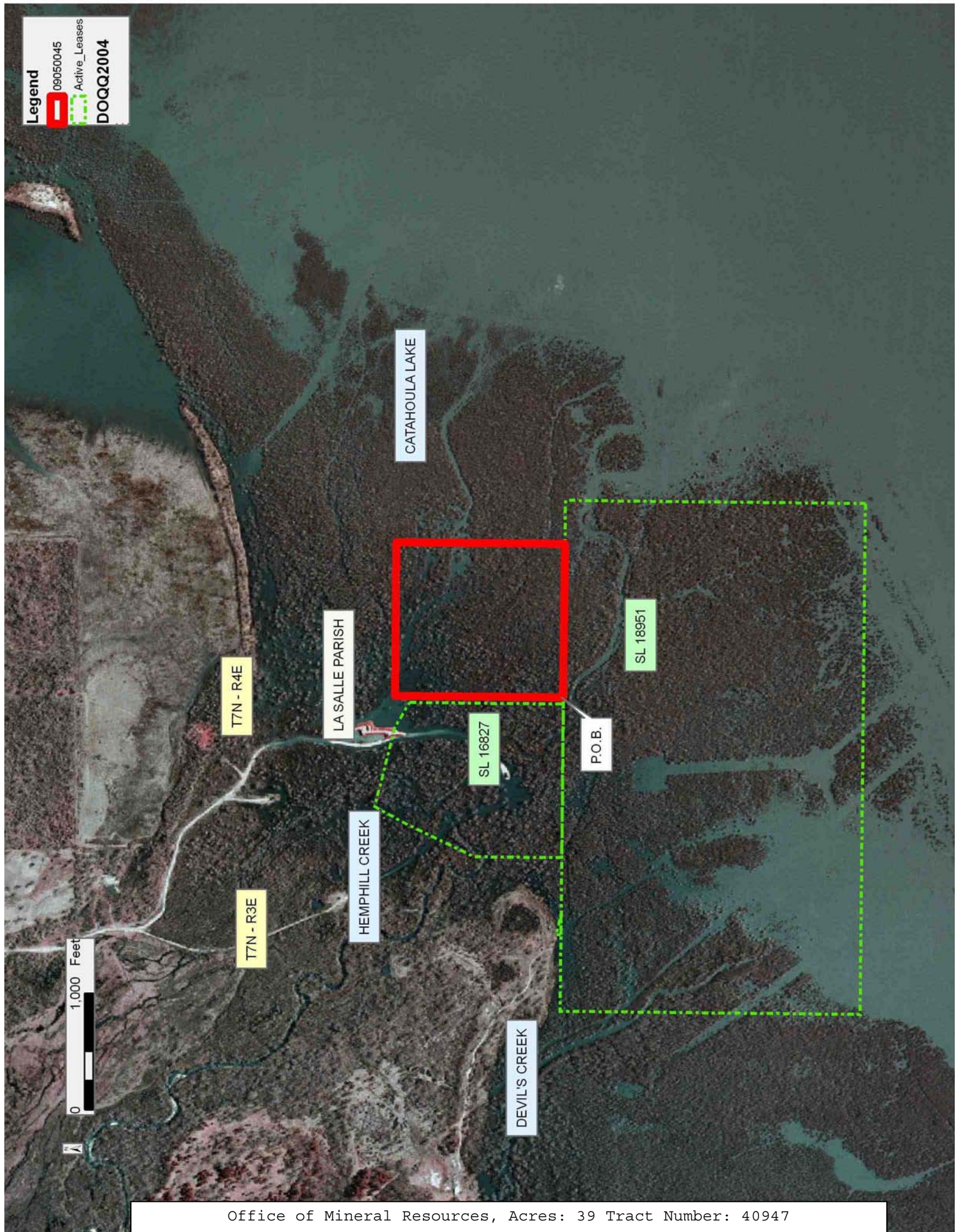
NOTE: The above description of the Tract nominated for lease has been provided and corrected, where required, exclusively by the nomination party. Any mineral lease selected from this Tract and awarded by the Louisiana State Mineral Board shall be without warranty of any kind, either express, implied, or statutory, including, but not limited to, the implied warranties of merchantability and fitness for a particular purpose. Should the mineral lease awarded by the Louisiana State Mineral Board be subsequently modified, cancelled or abrogated due to the existence of conflicting leases, operating agreements, private claims or other future obligations or conditions which may affect all or any portion of the leased Tract, it shall not relieve the Lessee of the obligation to pay any bonus due thereon to the Louisiana State Mineral Board, nor shall the Louisiana State Mineral Board be obligated to refund any consideration paid by the Lessor prior to such modification, cancellation, or abrogation, including, but not limited to, bonuses, rentals and royalties.

Bidder	Cash Payment	Price/ Acre	Rental	Oil	Gas	Other

Applicant: KEPCO OPERATING, INC.

Legend

09050045  
Active\_Leases  
DOQQ2004



**TRACT 40948 - East Baton Rouge and West Baton Rouge Parishes, Louisiana**

All of the lands now or formerly constituting the beds and bottoms of all water bodies of every nature and description as to which title is vested in the State of Louisiana, together with all islands arising therein and other lands formed by accretion or by reliction, where allowed by law, excepting tax adjudicated lands, and not presently under mineral lease on May 13, 2009, situated in East Baton Rouge and West Baton Rouge Parishes, Louisiana, and more particularly described as follows: Beginning at a point having Coordinates of X = 2,029,801.00 and Y = 708,800.00; thence South 16,342.81 feet to a point having Coordinates of X = 2,029,801.00 and Y = 692,457.19; thence West 6,256.03 feet to the Northeast corner of State Lease No. 14674 having Coordinates of X = 2,023,544.97 and Y = 692,457.19; thence West 5,306.62 feet along the North boundary of said State Lease No. 14674 to a point on the East boundary of State Lease No. 18804 having Coordinates of X = 2,018,238.35 and Y = 692,457.19; thence along the boundary of said State Lease No. 18804 the following courses: North 08 degrees 06 minutes 54 seconds East 5,306.62 feet to a point having Coordinates of X = 2,018,987.42 and Y = 697,710.68; West 5,306.64 feet to a point having Coordinates of X = 2,013,680.79 and Y = 697,710.68; South 08 degrees 06 minutes 54 seconds West 5,306.64 feet to a point having Coordinates of X = 2,012,931.71 and Y = 692,457.17 and East 5,306.62 feet to a point on the West boundary of said State Lease No. 14674 having Coordinates of X = 2,018,238.33 and Y = 692,457.17; thence South 08 degrees 06 minutes 54 seconds West 2,138.58 feet along the West boundary of said State Lease No. 14674 to a point having Coordinates of X = 2,017,936.44 and Y = 690,340.00; thence West 6,605.44 feet to a point having Coordinates of X = 2,011,331.00 and Y = 690,340.00; thence North 18,460.00 feet to a point having Coordinates of X = 2,011,331.00 and Y = 708,800.00; thence East 18,470.00 feet to the point of beginning, (Above described tract includes only waterbottoms claimed and owned by the state and specifically excludes any land which the state may claim or own and to which the mineral rights are vested in the state), above described tract containing approximately **1,046 acres**, all as more particularly outlined on a plat on file in the Office of Mineral Resources, Department of Natural Resources. All bearings, distances and coordinates are based on Louisiana Coordinate System of 1927, (North or South Zone), where applicable.

NOTE: The above description of the Tract nominated for lease has been provided and corrected, where required, exclusively by the nomination party. Any mineral lease selected from this Tract and awarded by the Louisiana State Mineral Board shall be without warranty of any kind, either express, implied, or statutory, including, but not limited to, the implied warranties of merchantability and fitness for a particular purpose. Should the mineral lease awarded by the Louisiana State Mineral Board be subsequently modified, cancelled or abrogated due to the existence of conflicting leases, operating agreements, private claims or other future obligations or conditions which may affect all or any portion of the leased Tract, it shall not relieve the Lessee of the obligation to pay any bonus due thereon to the Louisiana State Mineral Board, nor shall

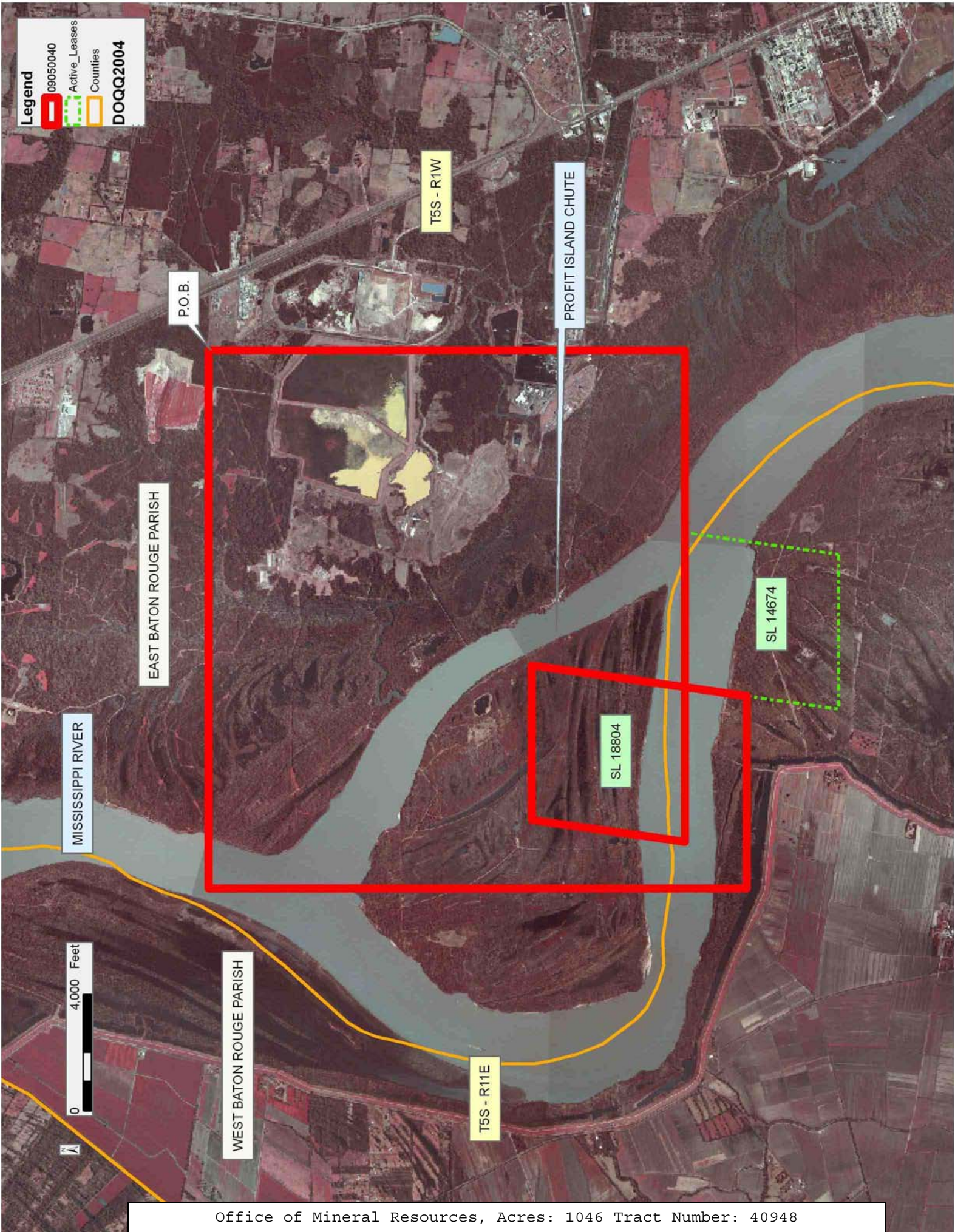


the Louisiana State Mineral Board be obligated to refund any consideration paid by the Lessor prior to such modification, cancellation, or abrogation, including, but not limited to, bonuses, rentals and royalties.

Applicant: SUNCOAST LAND SERVICES, INC.

Bidder	Cash Payment	Price/ Acre	Rental	Oil	Gas	Other







**TRACT 40949 - East Baton Rouge and West Baton Rouge Parishes, Louisiana**

All of the lands now or formerly constituting the beds and bottoms of all water bodies of every nature and description as to which title is vested in the State of Louisiana, together with all islands arising therein and other lands formed by accretion or by reliction, where allowed by law, excepting tax adjudicated lands, and not presently under mineral lease on May 13, 2009, situated in East Baton Rouge and West Baton Rouge Parishes, Louisiana, and more particularly described as follows: Beginning at a point having Coordinates of X = 2,031,560.00 and Y = 692,457.19; thence South 15,705.19 feet to a point having Coordinates of X = 2,031,560.00 and Y = 676,752.00; thence West 7,136.92 feet to a point on the East boundary of State Lease No. 19972 having Coordinates of X = 2,024,423.08 and Y = 676,752.00; thence along the boundary of said State Lease No. 19972 the following courses: North 02 degrees 13 minutes 05 seconds East 2,113.82 feet to its Northeast corner and having Coordinates of X = 2,024,504.89 and Y = 678,864.24; North 87 degrees 45 minutes 57 seconds West 10,561.17 feet to its Northwest corner and having Coordinates of X = 2,013,951.75 and Y = 679,275.97 and South 02 degrees 13 minutes 05 seconds West 2,525.86 feet to a point having Coordinates of X = 2,013,853.99 and Y = 676,752.00; thence West 763.99 feet to a point having Coordinates of X = 2,013,090.00 and Y = 676,752.00; thence North 13,588.00 feet to a point having Coordinates of X = 2,013,090.00 and Y = 690,340.00; thence East 4,846.44 feet to a point on the West boundary of State Lease No. 14674 having Coordinates of X = 2,017,936.44 and Y = 690,340.00; thence along the boundary of said State Lease No. 14674 the following courses: South 08 degrees 06 minutes 54 seconds West 3,168.04 feet to its Southwest corner having Coordinates of X = 2,017,489.24 and Y = 687,203.69; East 5,306.64 feet to its Southeast corner having Coordinates of X = 2,022,795.88 and Y = 687,203.69 and North 08 degrees 06 minutes 54 seconds East 5,306.64 feet to its Northeast corner having Coordinates of X = 2,023,544.97 and Y = 692,457.19; thence East 8,015.03 feet to the point of beginning, containing approximately **1,130.78 acres**, all as more particularly outlined on a plat on file in the Office of Mineral Resources, Department of Natural Resources. All bearings, distances and coordinates are based on Louisiana Coordinate System of 1927, (North or South Zone), where applicable.

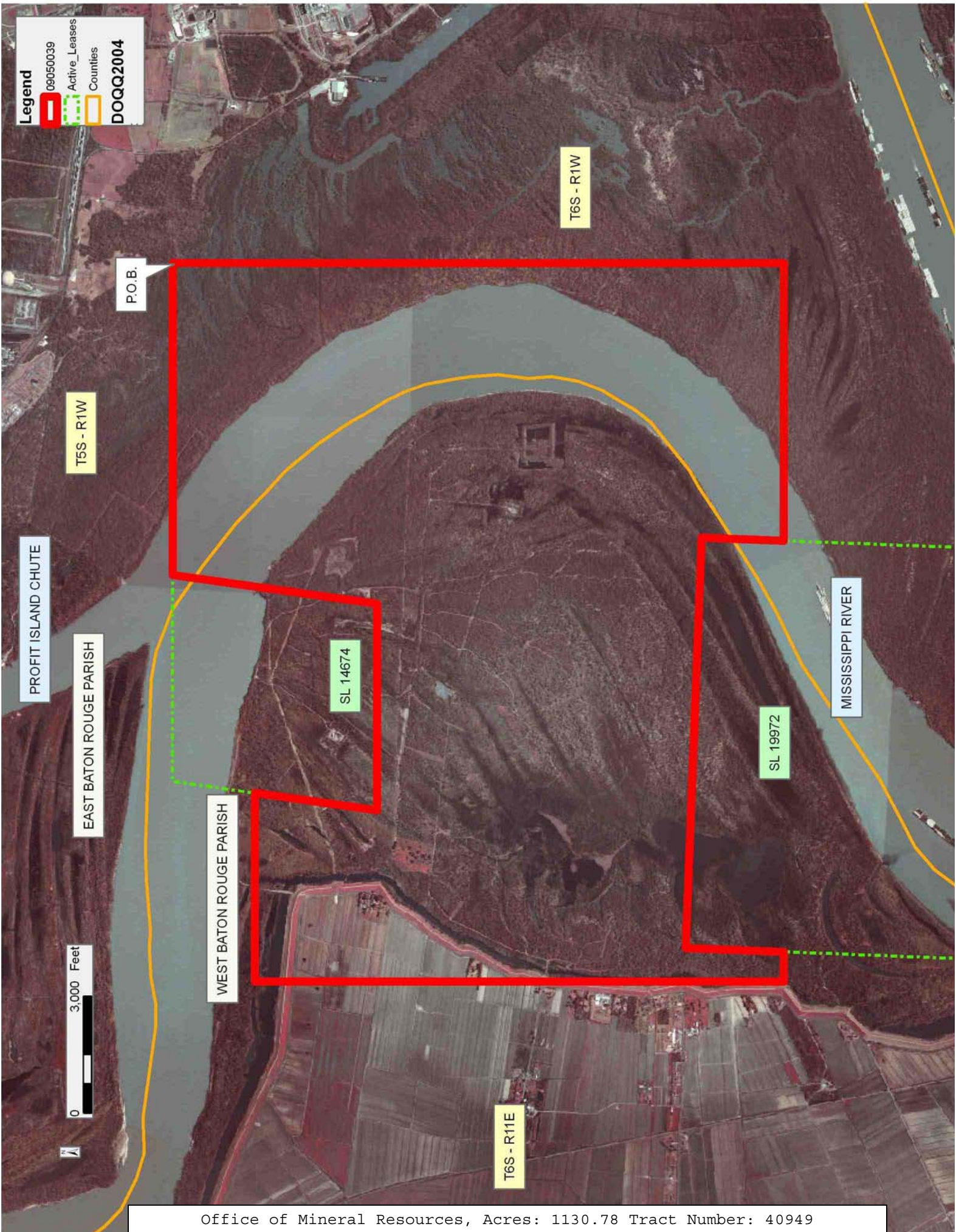
NOTE: The above description of the Tract nominated for lease has been provided and corrected, where required, exclusively by the nomination party. Any mineral lease selected from this Tract and awarded by the Louisiana State Mineral Board shall be without warranty of any kind, either express, implied, or statutory, including, but not limited to, the implied warranties of merchantability and fitness for a particular purpose. Should the mineral lease awarded by the Louisiana State Mineral Board be subsequently modified, cancelled or abrogated due to the existence of conflicting leases, operating agreements, private claims or other future obligations or conditions which may affect all or any portion of the leased Tract, it shall not relieve the Lessee of the obligation to pay any bonus due thereon to the Louisiana State Mineral Board, nor shall

the Louisiana State Mineral Board be obligated to refund any consideration paid by the Lessor prior to such modification, cancellation, or abrogation, including, but not limited to, bonuses, rentals and royalties.

Applicant: SUNCOAST LAND SERVICES, INC.

Bidder	Cash Payment	Price/ Acre	Rental	Oil	Gas	Other





Legend

09050039

Active\_Leases

Counties

DOQQ2004

PROFIT ISLAND CHUTE

EAST BATON ROUGE PARISH

WEST BATON ROUGE PARISH

MISSISSIPPI RIVER

T5S - R1W

T6S - R1W

T6S - R11E

SL 14674

SL 19972

P.O.B.

0 3,000 Feet

#### **TRACT 40950 - Calcasieu Parish, Louisiana**

All of the lands now or formerly constituting the beds and bottoms of all water bodies of every nature and description as to which title is vested in the State of Louisiana, together with all islands arising therein and other lands formed by accretion or by reliction, where allowed by law, excepting tax adjudicated lands, and not presently under mineral lease on May 13, 2009, situated in Calcasieu Parish, Louisiana, and more particularly described as follows: Beginning at a point having Coordinates of X = 1,416,930.00 and Y = 593,500.00; thence East 5,280.53 feet to a point having Coordinates of X = 1,422,210.53 and Y = 593,500.00; thence South 5,851.31 feet to the Northeast corner of State Lease No. 18434, as amended having Coordinates of X = 1,422,210.53 and Y = 587,648.69; thence along the North, West and South boundary of said State Lease No. 18434 the following courses and distances: North 89 degrees 40 minutes 45 seconds West 1,516.55 feet to its Northwest corner having Coordinates of X = 1,420,694.00 and Y = 587,657.18, South 00 degrees 19 minutes 15 seconds West 1,516.55 feet to its Southwest corner having Coordinates of X = 1,420,685.51 and Y = 586,140.65 and South 89 degrees 40 minutes 45 seconds East 1,516.55 feet to its Southeast corner having Coordinates of X = 1,422,202.03 and Y = 586,132.16; thence South 8,822.16 feet to a point having Coordinates of X = 1,422,202.03 and Y = 577,310.00; thence West 5,272.03 feet to a point having Coordinates of X = 1,416,930.00 and Y = 577,310.00; thence North 16,190.00 feet to the point of beginning, containing approximately **100 acres**, all as more particularly outlined on a plat on file in the Office of Mineral Resources, Department of Natural Resources. All bearings, distances and coordinates are based on Louisiana Coordinate System of 1927, (North or South Zone), where applicable.

NOTE: The above description of the Tract nominated for lease has been provided and corrected, where required, exclusively by the nomination party. Any mineral lease selected from this Tract and awarded by the Louisiana State Mineral Board shall be without warranty of any kind, either express, implied, or statutory, including, but not limited to, the implied warranties of merchantability and fitness for a particular purpose. Should the mineral lease awarded by the Louisiana State Mineral Board be subsequently modified, cancelled or abrogated due to the existence of conflicting leases, operating agreements, private claims or other future obligations or conditions which may affect all or any portion of the leased Tract, it shall not relieve the Lessee of the obligation to pay any bonus due thereon to the Louisiana State Mineral Board, nor shall the Louisiana State Mineral Board be obligated to refund any consideration paid by the Lessor prior to such modification, cancellation, or abrogation, including, but not limited to, bonuses, rentals and royalties.

Applicant: THEOPHILUS OIL, GAS & LAND SERVICES, LLC

Bidder	Cash Payment	Price/ Acre	Rental	Oil	Gas	Other







**TRACT 40951 - Calcasieu Parish, Louisiana**

All of the lands now or formerly constituting the beds and bottoms of all water bodies of every nature and description as to which title is vested in the State of Louisiana, together with all islands arising therein and other lands formed by accretion or by reliction, where allowed by law, excepting tax adjudicated lands, and not presently under mineral lease on May 13, 2009, situated in Calcasieu Parish, Louisiana, and more particularly described as follows: Beginning at a point having Coordinates of X = 1,422,210.53 and Y = 588,160.00; thence East 15,529.47 feet to a point having Coordinates of X = 1,437,740.00 and Y = 588,160.00; thence South 10,850.00 feet to a point having Coordinates of X = 1,437,740.00 and Y = 577,310.00; thence West 15,537.97 feet to a point having Coordinates of X = 1,422,202.03 and Y = 577,310.00; thence North 8,822.16 feet to the Southeast corner of State Lease No. 18434, as amended having Coordinates of X = 1,422,202.03 and Y = 586,132.16; thence North 00 degrees 19 minutes 15 seconds East 1,516.55 feet along the East boundary of said State Lease No. 18434 to its Northeast corner having Coordinates of X = 1,422,210.53 and Y = 587,648.69; thence North 511.31 feet to the point of beginning, containing approximately **104 acres**, all as more particularly outlined on a plat on file in the Office of Mineral Resources, Department of Natural Resources. All bearings, distances and coordinates are based on Louisiana Coordinate System of 1927, (North or South Zone), where applicable.

NOTE: The above description of the Tract nominated for lease has been provided and corrected, where required, exclusively by the nomination party. Any mineral lease selected from this Tract and awarded by the Louisiana State Mineral Board shall be without warranty of any kind, either express, implied, or statutory, including, but not limited to, the implied warranties of merchantability and fitness for a particular purpose. Should the mineral lease awarded by the Louisiana State Mineral Board be subsequently modified, cancelled or abrogated due to the existence of conflicting leases, operating agreements, private claims or other future obligations or conditions which may affect all or any portion of the leased Tract, it shall not relieve the Lessee of the obligation to pay any bonus due thereon to the Louisiana State Mineral Board, nor shall the Louisiana State Mineral Board be obligated to refund any consideration paid by the Lessor prior to such modification, cancellation, or abrogation, including, but not limited to, bonuses, rentals and royalties.

Applicant: THEOPHILUS OIL, GAS & LAND SERVICES, LLC

Bidder	Cash Payment	Price/ Acre	Rental	Oil	Gas	Other



**Legend**  
09050044  
Active\_Leases  
DOQQ2004

T9S - R7W

CALCASIEU PARISH

T9S - R8W

P.O.B.

SL 18434

ENGLISH BAYOU

KAYOUCHE COULEE

0 3,000 Feet





**TRACT 40952 - Iberville and St. Martin Parishes, Louisiana**

All of the lands now or formerly constituting the beds and bottoms of all water bodies of every nature and description as to which title is vested in the State of Louisiana, together with all islands arising therein and other lands formed by accretion or by reliction, where allowed by law, excepting tax adjudicated lands, and not presently under mineral lease on May 13, 2009, situated in Iberville and St. Martin Parishes, Louisiana, and more particularly described as follows: Beginning at a point having Coordinates of X = 1,971,008.00 and Y = 507,730.00; thence North 18,480.00 feet to a point having Coordinates of X = 1,971,008.00 and Y = 526,210.00; thence East 18,480.00 feet to a point having Coordinates of X = 1,989,488.00 and Y = 526,210.00; thence South 18,480.00 feet to a point having Coordinates of X = 1,989,488.00 and Y = 507,730.00; thence West 18,480.00 feet to the point of beginning, **LESS AND EXCEPT** all that portion of State Lease No. 7520, as amended, that lies within the above tract, more particularly described as follows: Commencing at the point of beginning of the above described tract having Coordinates of X = 1,971,008.00 and Y = 507,730.00; thence North 43 degrees 55 minutes 43 seconds East 12,275.09 feet to a point on the Southern boundary of said State Lease No. 7520 having Coordinates of X = 1,979,524.00 and Y = 516,570.56; thence along the boundary of said State Lease No. 7520 the following courses: North 89 degrees 44 minutes 22 seconds West approximately 1,001 feet; Northwesterly along a curve to the right having a radius of 2,800.00 feet and a chord bearing of North 68 degrees 11 minutes 32 seconds West approximately 58 feet to a point; North 04 degrees 00 minutes 00 seconds East 2,682.14 feet to a point; South 64 degrees 00 minutes 00 seconds East 3,612.22 feet to a point; Southwesterly along a curve to the right having a radius of 2,800.00 feet and a chord bearing of South 50 degrees 48 minutes 32 seconds West approximately 1,777 feet to a point and North 89 degrees 44 minutes 22 seconds West approximately 1,001 feet to the point of beginning, (Above described tract includes only waterbottoms claimed and owned by the state and specifically excludes any land which the state may claim or own and to which the mineral rights are vested in the state), above described tract containing approximately **770 acres**, all as more particularly outlined on a plat on file in the Office of Mineral Resources, Department of Natural Resources. All bearings, distances and coordinates are based on Louisiana Coordinate System of 1927, (North or South Zone), where applicable.

NOTE: The above description of the Tract nominated for lease has been provided and corrected, where required, exclusively by the nomination party. Any mineral lease selected from this Tract and awarded by the Louisiana State Mineral Board shall be without warranty of any kind, either express, implied, or statutory, including, but not limited to, the implied warranties of merchantability and fitness for a particular purpose. Should the mineral lease awarded by the Louisiana State Mineral Board be subsequently modified, cancelled or abrogated due to the existence of conflicting leases, operating agreements, private claims or other future obligations or conditions which may affect all or any portion

of the leased Tract, it shall not relieve the Lessee of the obligation to pay any bonus due thereon to the Louisiana State Mineral Board, nor shall the Louisiana State Mineral Board be obligated to refund any consideration paid by the Lessor prior to such modification, cancellation, or abrogation, including, but not limited to, bonuses, rentals and royalties.

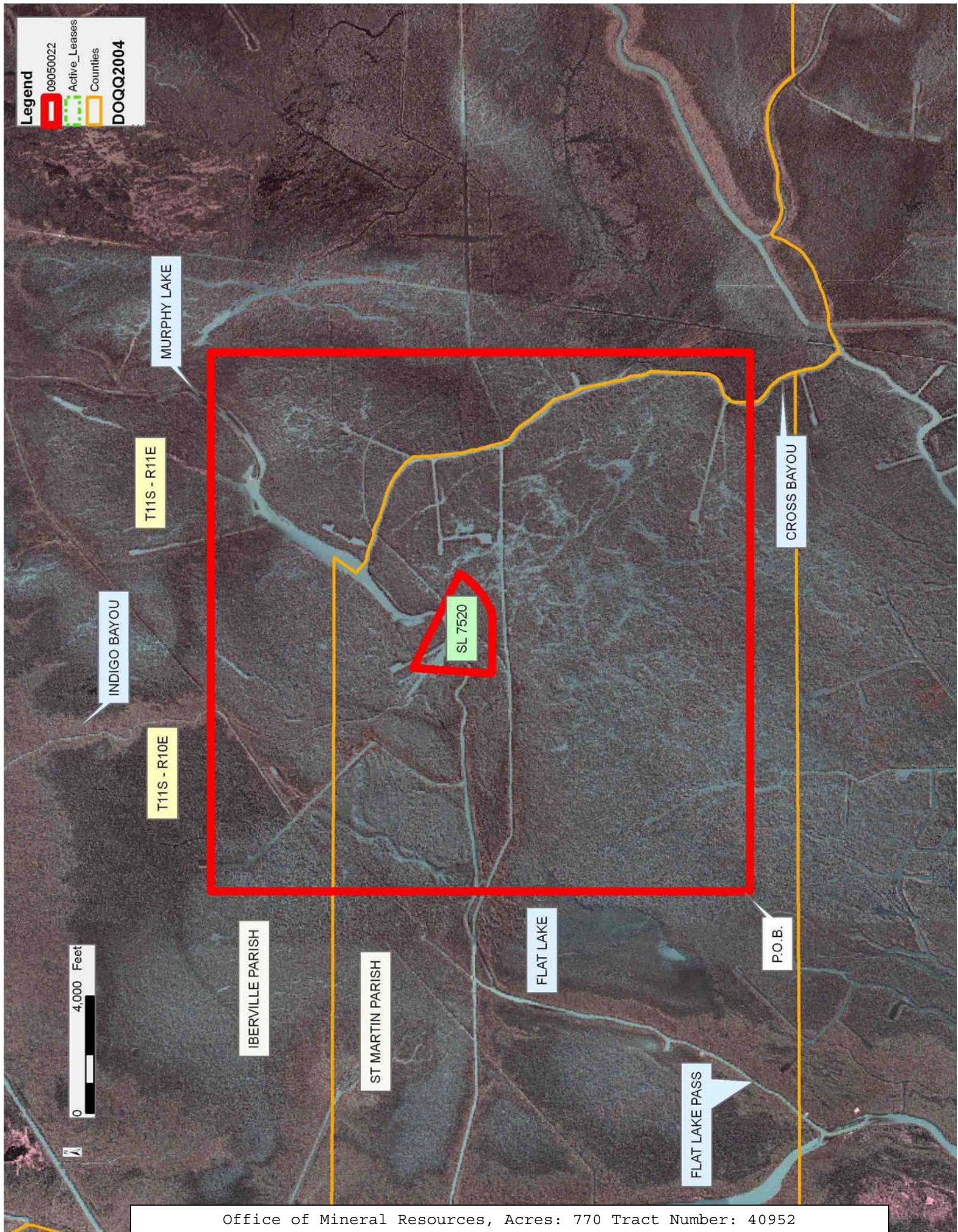
Applicant: HAROLD J. ANDERSON, INC.

Bidder	Cash Payment	Price/ Acre	Rental	Oil	Gas	Other



**Legend**

09050022  
Active\_Leases  
Counties  
DOQQ2004





**TRACT 40953 - St. John The Baptist Parish, Louisiana**

All of the lands now or formerly constituting the beds and bottoms of all water bodies of every nature and description as to which title is vested in the State of Louisiana, together with all islands arising therein and other lands formed by accretion or by reliction, where allowed by law, excepting tax adjudicated lands, and not presently under mineral lease on May 13, 2009, situated in St. John The Baptist Parish, Louisiana, and more particularly described as follows: Beginning at a point having Coordinates of X = 2,233,500.00 and Y = 506,200.00; thence East 7,000.00 feet to a point having Coordinates of X = 2,240,500.00 and Y = 506,200.00; thence South 5,300.00 feet to a point having Coordinates of X = 2,240,500.00 and Y = 500,900.00; thence West 7,000.00 feet to a point having Coordinates of X = 2,233,500.00 and Y = 500,900.00; thence North 5,300.00 feet to the point of beginning, containing approximately **427 acres**, all as more particularly outlined on a plat on file in the Office of Mineral Resources, Department of Natural Resources. All bearings, distances and coordinates are based on Louisiana Coordinate System of 1927, (North or South Zone), where applicable.

NOTE: The above description of the Tract nominated for lease has been provided and corrected, where required, exclusively by the nomination party. Any mineral lease selected from this Tract and awarded by the Louisiana State Mineral Board shall be without warranty of any kind, either express, implied, or statutory, including, but not limited to, the implied warranties of merchantability and fitness for a particular purpose. Should the mineral lease awarded by the Louisiana State Mineral Board be subsequently modified, cancelled or abrogated due to the existence of conflicting leases, operating agreements, private claims or other future obligations or conditions which may affect all or any portion of the leased Tract, it shall not relieve the Lessee of the obligation to pay any bonus due thereon to the Louisiana State Mineral Board, nor shall the Louisiana State Mineral Board be obligated to refund any consideration paid by the Lessor prior to such modification, cancellation, or abrogation, including, but not limited to, bonuses, rentals and royalties.

NOTE: The State of Louisiana does hereby reserve, and this lease shall be subject to, the imprescriptible right of surface use in the nature of a servitude in favor of the Department of Natural Resources, including its Offices and Commissions, for the sole purpose of implementing, constructing, servicing and maintaining approved coastal zone management and/or restoration projects. Utilization of any and all rights derived under this lease by the mineral lessee, its agents, successors or assigns, shall not interfere with nor hinder the reasonable surface use by the Department of Natural Resources, its Offices or Commissions, as herein above reserved.

Applicant: MCGINTY-DURHAM, INC.

Bidder	Cash Payment	Price/ Acre	Rental	Oil	Gas	Other



MISSISSIPPI RIVER

ST JOHN THE BAPTIST PARISH

P.O.B.

0 2,000 Feet



**TRACT 40954 - St. John The Baptist Parish, Louisiana**

All of the lands now or formerly constituting the beds and bottoms of all water bodies of every nature and description as to which title is vested in the State of Louisiana, together with all islands arising therein and other lands formed by accretion or by reliction, where allowed by law, excepting tax adjudicated lands, and not presently under mineral lease on May 13, 2009, situated in St. John The Baptist Parish, Louisiana, and more particularly described as follows: Beginning at a point having Coordinates of X = 2,240,500.00 and Y = 506,200.00; thence East 6,000.00 feet to a point having Coordinates of X = 2,246,500.00 and Y = 506,200.00; thence South 5,300.00 feet to a point having Coordinates of X = 2,246,500.00 and Y = 500,900.00; thence West 6,000.00 feet to a point having Coordinates of X = 2,240,500.00 and Y = 500,900.00; thence North 5,300.00 feet to the point of beginning, containing approximately **366 acres**, all as more particularly outlined on a plat on file in the Office of Mineral Resources, Department of Natural Resources. All bearings, distances and coordinates are based on Louisiana Coordinate System of 1927, (North or South Zone), where applicable.

NOTE: The above description of the Tract nominated for lease has been provided and corrected, where required, exclusively by the nomination party. Any mineral lease selected from this Tract and awarded by the Louisiana State Mineral Board shall be without warranty of any kind, either express, implied, or statutory, including, but not limited to, the implied warranties of merchantability and fitness for a particular purpose. Should the mineral lease awarded by the Louisiana State Mineral Board be subsequently modified, cancelled or abrogated due to the existence of conflicting leases, operating agreements, private claims or other future obligations or conditions which may affect all or any portion of the leased Tract, it shall not relieve the Lessee of the obligation to pay any bonus due thereon to the Louisiana State Mineral Board, nor shall the Louisiana State Mineral Board be obligated to refund any consideration paid by the Lessor prior to such modification, cancellation, or abrogation, including, but not limited to, bonuses, rentals and royalties.

NOTE: The State of Louisiana does hereby reserve, and this lease shall be subject to, the imprescriptible right of surface use in the nature of a servitude in favor of the Department of Natural Resources, including its Offices and Commissions, for the sole purpose of implementing, constructing, servicing and maintaining approved coastal zone management and/or restoration projects. Utilization of any and all rights derived under this lease by the mineral lessee, its agents, successors or assigns, shall not interfere with nor hinder the reasonable surface use by the Department of Natural Resources, its Offices or Commissions, as herein above reserved.

Applicant: MCGINTY-DURHAM, INC.

Bidder	Cash Payment	Price/ Acre	Rental	Oil	Gas	Other



0 2,000 Feet

P.O.B.

ST JOHN THE BAPTIST PARISH

MISSISSIPPI RIVER



**TRACT 40955 - St. John The Baptist Parish, Louisiana**

All of the lands now or formerly constituting the beds and bottoms of all water bodies of every nature and description as to which title is vested in the State of Louisiana, together with all islands arising therein and other lands formed by accretion or by reliction, where allowed by law, excepting tax adjudicated lands, and not presently under mineral lease on May 13, 2009, situated in St. John The Baptist Parish, Louisiana, and more particularly described as follows: Beginning at a point having Coordinates of X = 2,246,500.00 and Y = 506,200.00; thence East 6,600.00 feet to a point having Coordinates of X = 2,253,100.00 and Y = 506,200.00; thence South 5,300.00 feet to a point having Coordinates of X = 2,253,100.00 and Y = 500,900.00; thence West 6,600.00 feet to a point having Coordinates of X = 2,246,500.00 and Y = 500,900.00; thence North 5,300.00 feet to the point of beginning, containing approximately **360 acres**, all as more particularly outlined on a plat on file in the Office of Mineral Resources, Department of Natural Resources. All bearings, distances and coordinates are based on Louisiana Coordinate System of 1927, (North or South Zone), where applicable.

NOTE: The above description of the Tract nominated for lease has been provided and corrected, where required, exclusively by the nomination party. Any mineral lease selected from this Tract and awarded by the Louisiana State Mineral Board shall be without warranty of any kind, either express, implied, or statutory, including, but not limited to, the implied warranties of merchantability and fitness for a particular purpose. Should the mineral lease awarded by the Louisiana State Mineral Board be subsequently modified, cancelled or abrogated due to the existence of conflicting leases, operating agreements, private claims or other future obligations or conditions which may affect all or any portion of the leased Tract, it shall not relieve the Lessee of the obligation to pay any bonus due thereon to the Louisiana State Mineral Board, nor shall the Louisiana State Mineral Board be obligated to refund any consideration paid by the Lessor prior to such modification, cancellation, or abrogation, including, but not limited to, bonuses, rentals and royalties.

NOTE: The State of Louisiana does hereby reserve, and this lease shall be subject to, the imprescriptible right of surface use in the nature of a servitude in favor of the Department of Natural Resources, including its Offices and Commissions, for the sole purpose of implementing, constructing, servicing and maintaining approved coastal zone management and/or restoration projects. Utilization of any and all rights derived under this lease by the mineral lessee, its agents, successors or assigns, shall not interfere with nor hinder the reasonable surface use by the Department of Natural Resources, its Offices or Commissions, as herein above reserved.

Applicant: MCGINTY-DURHAM, INC.

Bidder	Cash Payment	Price/ Acre	Rental	Oil	Gas	Other



Legend

09050017 Active\_Leases

DOQQ2004

0 2,000 Feet

ST JOHN THE BAPTIST PARISH

P.O.B.

MISSISSIPPI RIVER

SL 19583