

TRACT 39842 - Plaquemines Parish, Louisiana

All State owned lands and water bottoms located within the boundaries of the Pass-A-Loutre Wildlife Management Area as defined by the Department of Wildlife and Fisheries incorporating a title opinion from the Office of the Governor dated August 3, 1998, not presently under mineral lease by the State of Louisiana on May 14, 2008, all as set forth following: Beginning at a point within the Pass-A-Loutre Wildlife Management Area, having Coordinates of X = 2,711,850.00 and Y = 178,723.24; thence East 6,415.00 feet to a point having Coordinates of X = 2,718,265.00 and Y = 178,723.24; thence South 5,243.24 feet to a point having Coordinates of X = 2,718,265.00 and Y = 173,480.00; thence West 1,595.00 feet to the Southeast corner of State Lease No. 2091, as amended, having Coordinates of X = 2,716,670.00 and Y = 173,480.00; thence along the boundary of said State Lease No. 2091 the following courses: North 12 degrees 03 minutes 43 seconds East 1,196.39 feet; North 04 degrees 05 minutes 08 seconds West 140.36 feet; North 12 degrees 59 minutes 41 seconds West 133.42 feet; North 31 degrees 13 minutes 06 seconds West 192.94 feet; North 44 degrees 03 minutes 32 seconds West 215.70 feet; North 53 degrees 44 minutes 46 seconds West 186.01 feet; North 68 degrees 57 minutes 59 seconds West 139.28 feet; North 74 degrees 28 minutes 23 seconds West 186.82 feet; North 80 degrees 32 minutes 16 seconds West 212.90 feet; North 86 degrees 49 minutes 13 seconds West 270.43 feet; South 86 degrees 18 minutes 31 seconds West 310.63 feet; South 79 degrees 32 minutes 18 seconds West 385.51 feet; South 73 degrees 47 minutes 51 seconds West 250.86 feet; South 65 degrees 22 minutes 35 seconds West 264.01 feet; South 61 degrees 59 minutes 27 seconds West 532.35 feet; South 81 degrees 52 minutes 12 seconds West 70.71 feet; North 71 degrees 33 minutes 54 seconds West 94.87 feet; North 63 degrees 26 minutes 06 seconds West 167.71 feet; North 54 degrees 50 minutes 05 seconds West 269.13 feet; North 47 degrees 29 minutes 22 seconds West 162.79 feet; North 32 degrees 00 minutes 19 seconds West 94.34 feet; North 12 degrees 05 minutes 41 seconds West 143.18 feet; North 06 degrees 20 minutes 23 seconds West 181.12 feet; North 02 degrees 12 minutes 18 seconds East 133.85 feet and South 88 degrees 50 minutes 20 seconds West 7.40 feet to the Southeast corner of the Eastern portion of State Lease No. 5003, as amended, having Coordinates of X = 2,713,297.75 and Y = 175,873.60; thence along the boundary of the Eastern portion of said State Lease No. 5003 the following courses: North 01 degrees 22 minutes 36 seconds West 128.62 feet and North 81 degrees 53 minutes 52 seconds West 381.94 feet to its Northwest corner, also being a point on the Northern boundary of said State Lease No. 2091 having Coordinates of X = 2,712,916.53 and Y = 176,056.01; thence North 81 degrees 53 minutes 54 seconds West 1,077.28 feet along the Northern boundary of said State Lease No. 2091 to its Northwest corner, also being the Northeast corner of the Western portion of said State Lease No. 5003 having Coordinates of X = 2,711,850.00 and Y = 176,207.83; thence North 2,515.41 feet to the point of beginning, containing approximately **537.42 acres, LESS AND EXCEPT** any privately owned land that may be located within the above described Tract, if any, comprising approximately 0 acres, leaving a total of **537.42 net acres** of State owned land and water bottoms

within the above described Tract, all as more particularly outlined on a plat on file in the Office of Mineral Resources, Department of Natural Resources. All bearings, distances and coordinates are based on Louisiana Coordinate System of 1927, (South Zone).

NOTE: The above description of the Tract nominated for lease has been provided and corrected, where required, exclusively by the nomination party. Any mineral lease selected from this Tract and awarded by the Louisiana State Mineral Board shall be without warranty of any kind, either express, implied, or statutory, including, but not limited to, the implied warranties of merchantability and fitness for a particular purpose. Should the mineral lease awarded by the Louisiana State Mineral Board be subsequently modified, cancelled or abrogated due to the existence of conflicting leases, operating agreements, private claims or other future obligations or conditions which may affect all or any portion of the leased Tract, it shall not relieve the Lessee of the obligation to pay any bonus due thereon to the Louisiana State Mineral Board, nor shall the Louisiana State Mineral Board be obligated to refund any consideration paid by the Lessor prior to such modification, cancellation, or abrogation, including, but not limited to, bonuses, rentals and royalties.

NOTE: The Office of Mineral Resources will require a minimum bonus of \$350 per acre and a minimum royalty of 25%.

NOTE: This tract is located in The Pass-a-Loutre WMA under the jurisdiction of the Louisiana Department of Wildlife and Fisheries which has promulgated rules and regulations for the protection of game and wildlife on the aforesaid Tract and, therefore, shall be subject to said rules and regulations, a copy of which shall be attached to the mineral lease. In addition to the specific rules and regulations applicable, the following shall apply regarding operations under this mineral lease:

1. No activities will be allowed without written authorization of the Louisiana Department of Wildlife and Fisheries. All projects will be coordinated and approved by the Pass-A-Loutre WMA Supervisor prior to any activities on the wildlife management area.
2. Proposed projects will be evaluated on a case by case basis. Modifications to proposed project features including but not limited to access routes, well sites, flowlines and appurtenant structures may be required by the Louisiana Department of Wildlife and Fisheries.
3. Compliance with the Pass-A-Loutre WMA regulations will be required unless otherwise specified by the Department.
4. Compensatory mitigation will be required to offset unavoidable habitat impacts.

5. Removal of all structures, facilities and equipment will be required within 120 days of abandonment unless otherwise agreed to by the Department.

6. No activities will be allowed during the hunting season unless approved by the department.

7. Prior to submitting applications for wetland permits to Federal and State permitting agencies, the leaseholder shall coordinate project details with the Department. Contact person for the Department will be Mike Windham at 504-568-5886 or (225) 765-2807.




NOTE: The State of Louisiana does hereby reserve, and this lease shall be subject to, the imprescriptible right of surface use in the nature of a servitude in favor of the Department of Natural Resources, including its Offices and Commissions, for the sole purpose of implementing, constructing, servicing and maintaining approved coastal zone management and/or restoration projects. Utilization of any and all rights derived under this lease by the mineral lessee, its agents, successors or assigns, shall not interfere with nor hinder the reasonable surface use by the Department of Natural Resources, its Offices or Commissions, as herein above reserved.

NOTE: The Department of Wildlife and Fisheries has designated certain areas in the coastal waters of the State of Louisiana as Oyster Seed Bed Areas. The exact location of those Seed Bed Areas must be obtained from the Department of Wildlife and Fisheries and any work done under a mineral lease from the State of Louisiana may necessarily be conducted in conformity with the rules and regulations promulgated by the said Department of Wildlife and Fisheries for Oyster Seed Bed Areas.

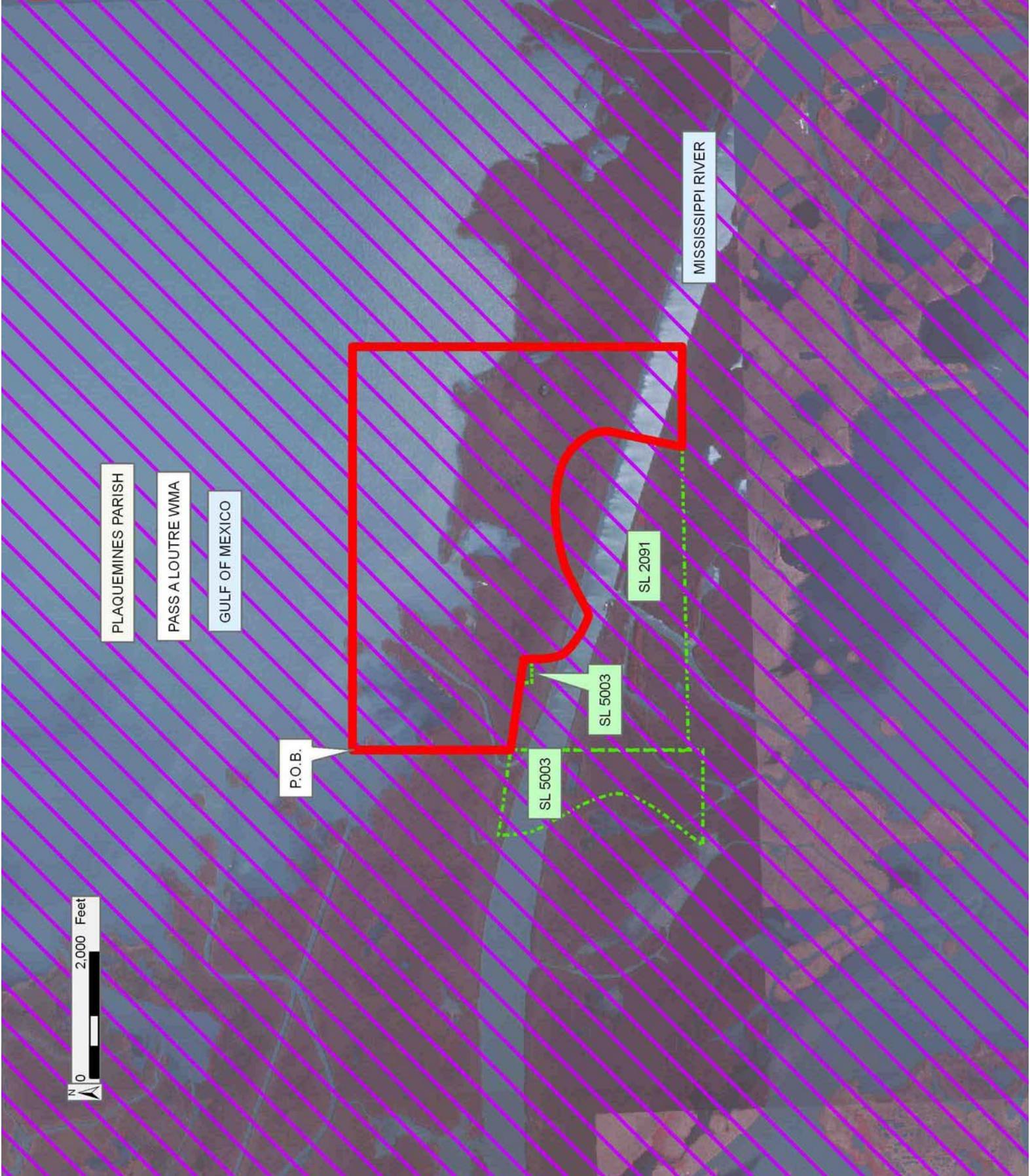
Applicant: JAMES "PETE" LONGSTREET

Bidder	Cash Payment	Price/Acre	Rental	Oil	Gas	Other

Legend

-  08050026
-  Wildlife
-  Active_Leases

DOQQ2004



TRACT 39843 - Plaquemines Parish, Louisiana

All State owned lands and water bottoms located within the boundaries of the Pass-A-Loutre Wildlife Management Area as defined by the Department of Wildlife and Fisheries incorporating a title opinion from the Office of the Governor dated August 3, 1998, not presently under mineral lease by the State of Louisiana on May 14, 2008, all as set forth following: Beginning at a point within the Pass-A-Loutre Wildlife Management Area, having Coordinates of X = 2,710,050.00 and Y = 178,723.24; thence East 1,800.00 feet to a point having Coordinates of X = 2,711,850.00 and Y = 178,723.24; thence South 2,515.41 feet to the Northeast corner of the Western portion of State Lease No. 5003, as amended, having Coordinates of X = 2,711,850.00 and Y = 176,207.83; thence along the boundary of said portion of State Lease No. 5003 the following courses: North 81 degrees 53 minutes 55 seconds West 1,363.61 feet; South 190.00 feet; South 06 degrees 20 minutes 25 seconds East 181.11 feet; South 14 degrees 02 minutes 11 seconds East 185.54 feet; South 22 degrees 06 minutes 34 seconds East 172.70 feet; South 29 degrees 39 minutes 00 seconds East 747.93 feet; South 21 degrees 48 minutes 02 seconds East 215.42 feet; South 17 degrees 31 minutes 32 seconds East 199.25 feet; South 08 degrees 07 minutes 48 seconds East 141.42 feet; South 04 degrees 05 minutes 08 seconds West 140.36 feet; South 19 degrees 26 minutes 24 seconds West 180.28 feet; South 28 degrees 36 minutes 38 seconds West 250.60 feet; South 34 degrees 49 minutes 28 seconds West 280.18 feet; South 39 degrees 33 minutes 35 seconds West 298.33 feet and South 37 degrees 58 minutes 18 seconds West 471.32 feet to its Southwest corner, also being the Northwest corner of State Lease No. 4901, as amended, having Coordinates of X = 2,710,330.01 and Y = 173,148.44; thence along the boundary of said State Lease No. 4901 the following courses: South 37 degrees 58 minutes 26 seconds West 48.79 feet; South 30 degrees 57 minutes 50 seconds West 174.93 feet; South 19 degrees 39 minutes 14 seconds West 148.66 feet; South 10 degrees 00 minutes 29 seconds West 172.63 feet; South 185.00 feet; South 09 degrees 51 minutes 57 seconds East 116.73 feet; South 20 degrees 13 minutes 30 seconds East 202.49 feet; South 33 degrees 41 minutes 24 seconds East 180.28 feet; South 45 degrees 00 minutes 00 seconds East 197.99 feet; South 52 degrees 07 minutes 30 seconds East 342.05 feet; South 61 degrees 23 minutes 22 seconds East 250.60 feet; South 67 degrees 45 minutes 04 seconds East 237.70 feet; South 74 degrees 03 minutes 17 seconds East 291.20 feet; South 81 degrees 28 minutes 09 seconds East 202.24 feet and East 200.01 feet to its Southeast corner having Coordinates of X = 2,711,850.00 and Y = 171,339.98; thence South 531.98 feet to a point having Coordinates of X = 2,711,850.00 and Y = 170,808.00; thence West 7,134.31 feet to a point having Coordinates of X = 2,704,715.69 and Y = 170,808.00; thence North 887.28 feet to a point having Coordinates of X = 2,704,715.69 and Y = 171,695.28; thence North 89 degrees 31 minutes 07 seconds East 3,697.87 feet to a point having Coordinates of X = 2,708,413.43 and Y = 171,726.35; thence North 01 degrees 44 minutes 09 seconds West 3,079.97 feet to a point having Coordinates of X = 2,708,320.13 and Y = 174,804.91; thence South 89 degrees 47 minutes 35 seconds East 1,729.88 feet to a point having Coordinates of X =

2,710,050.00 and $Y = 174,798.66$; thence North 3,924.58 feet to the point of beginning, containing approximately **422.22 acres, LESS AND EXCEPT** any privately owned land that may be located within the above described Tract, if any, comprising approximately 0 acres, leaving a total of **422.22 net acres** of State owned land and water bottoms within the above described Tract, all as more particularly outlined on a plat on file in the Office of Mineral Resources, Department of Natural Resources. All bearings, distances and coordinates are based on Louisiana Coordinate System of 1927, (South Zone).

NOTE: The Office of Mineral Resources will require a minimum bonus of \$350 per acre and a minimum royalty of 25%.

NOTE: The above description of the Tract nominated for lease has been provided and corrected, where required, exclusively by the nomination party. Any mineral lease selected from this Tract and awarded by the Louisiana State Mineral Board shall be without warranty of any kind, either express, implied, or statutory, including, but not limited to, the implied warranties of merchantability and fitness for a particular purpose. Should the mineral lease awarded by the Louisiana State Mineral Board be subsequently modified, cancelled or abrogated due to the existence of conflicting leases, operating agreements, private claims or other future obligations or conditions which may affect all or any portion of the leased Tract, it shall not relieve the Lessee of the obligation to pay any bonus due thereon to the Louisiana State Mineral Board, nor shall the Louisiana State Mineral Board be obligated to refund any consideration paid by the Lessor prior to such modification, cancellation, or abrogation, including, but not limited to, bonuses, rentals and royalties.

NOTE: This tract is located in The Pass-a-Loutre WMA under the jurisdiction of the Louisiana Department of Wildlife and Fisheries which has promulgated rules and regulations for the protection of game and wildlife on the aforesaid Tract and, therefore, shall be subject to said rules and regulations, a copy of which shall be attached to the mineral lease. In addition to the specific rules and regulations applicable, the following shall apply regarding operations under this mineral lease:

1. No activities will be allowed without written authorization of the Louisiana Department of Wildlife and Fisheries. All projects will be coordinated and approved by the Pass-A-Loutre WMA Supervisor prior to any activities on the wildlife management area.
2. Proposed projects will be evaluated on a case by case basis. Modifications to proposed project features including but not limited to access routes, well sites, flowlines and appurtenant structures may be required by the Louisiana Department of Wildlife and Fisheries.

3. Compliance with the Pass-A-Loutre WMA regulations will be required unless otherwise specified by the Department.
4. Compensatory mitigation will be required to offset unavoidable habitat impacts.
5. Removal of all structures, facilities and equipment will be required within 120 days of abandonment unless otherwise agreed to by the Department.
6. No activities will be allowed during the hunting season unless approved by the department.
7. Prior to submitting applications for wetland permits to Federal and State permitting agencies, the leaseholder shall coordinate project details with the Department. Contact person for the Department will be Mike Windham at 504-568-5886 or (225) 765-2807.



NOTE: The State of Louisiana does hereby reserve, and this lease shall be subject to, the imprescriptible right of surface use in the nature of a servitude in favor of the Department of Natural Resources, including its Offices and Commissions, for the sole purpose of implementing, constructing, servicing and maintaining approved coastal zone management and/or restoration projects. Utilization of any and all rights derived under this lease by the mineral lessee, its agents, successors or assigns, shall not interfere with nor hinder the reasonable surface use by the Department of Natural Resources, its Offices or Commissions, as herein above reserved.

NOTE: The Department of Wildlife and Fisheries has designated certain areas in the coastal waters of the State of Louisiana as Oyster Seed Bed Areas. The exact location of those Seed Bed Areas must be obtained from the Department of Wildlife and Fisheries and any work done under a mineral lease from the State of Louisiana may necessarily be conducted in conformity with the rules and regulations promulgated by the said Department of Wildlife and Fisheries for Oyster Seed Bed Areas.

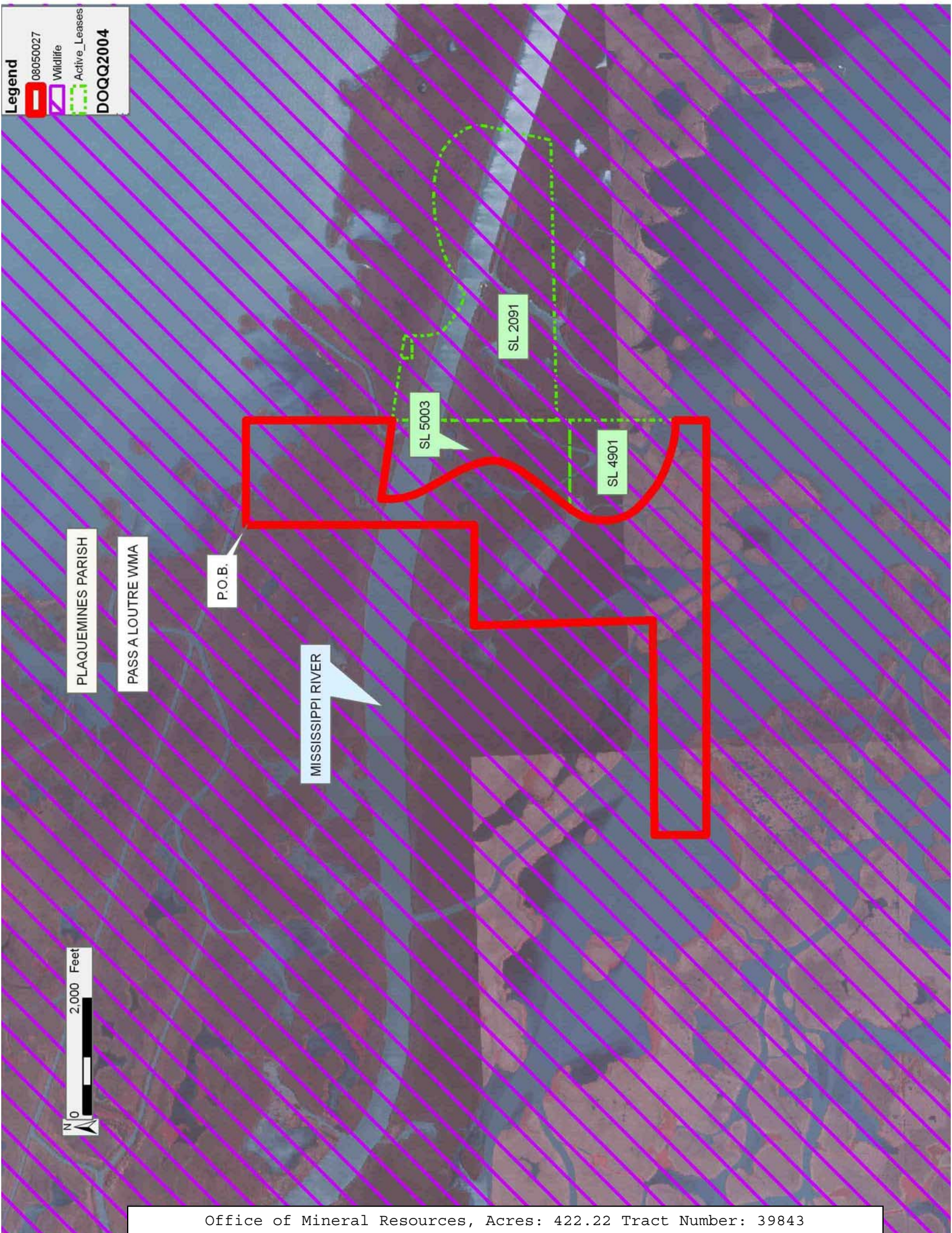
Bidder	Cash Payment	Price/Acre	Rental	Oil	Gas	Other

Applicant: JAMES "PETE" LONGSTREET

Legend

-  08050027
-  Wildlife
-  Active_Leases

DOQQ2004



TRACT 39844 - Plaquemines Parish, Louisiana

All State owned lands and water bottoms located within the boundaries of the Pass-A-Loutre Wildlife Management Area as defined by the Department of Wildlife and Fisheries incorporating a title opinion from the Office of the Governor dated August 3, 1998, not presently under mineral lease by the State of Louisiana on May 14, 2008, all as set forth following: Beginning at a point within the Pass-A-Loutre Wildlife Management Area, having Coordinates of X = 2,705,334.87 and Y = 178,706.58; thence North 89 degrees 47 minutes 51 seconds East 4,715.16 feet to a point having Coordinates of X = 2,710,050.00 and Y = 178,723.24; thence South 3,924.58 feet to a point having Coordinates of X = 2,710,050.00 and Y = 174,798.66; thence North 89 degrees 47 minutes 35 seconds West 1,729.88 feet to a point having Coordinates of X = 2,708,320.13 and Y = 174,804.91; thence South 01 degrees 44 minutes 09 seconds East 3,079.97 feet to a point having Coordinates of X = 2,708,413.43 and Y = 171,726.35; thence South 89 degrees 31 minutes 07 seconds West 3,697.87 feet to a point having Coordinates of X = 2,704,715.69 and Y = 171,695.28; thence North 2,860.88 feet to a point having Coordinates of X = 2,704,715.69 and Y = 174,556.16; thence North 87 degrees 08 minutes 18 seconds East 619.95 feet to a point having Coordinates of X = 2,705,334.87 and Y = 174,587.11; thence North 4,119.47 feet to the point of beginning, containing approximately 679.40 gross acres, **LESS AND EXCEPT** any privately owned land that may be located within the above described Tract, if any, comprising approximately 39.82 acres, leaving a total of **639.58 net acres** of State owned land and water bottoms within the above described Tract, all as more particularly outlined on a plat on file in the Office of Mineral Resources, Department of Natural Resources. All bearings, distances and coordinates are based on Louisiana Coordinate System of 1927, (South Zone).

NOTE: The above description of the Tract nominated for lease has been provided and corrected, where required, exclusively by the nomination party. Any mineral lease selected from this Tract and awarded by the Louisiana State Mineral Board shall be without warranty of any kind, either express, implied, or statutory, including, but not limited to, the implied warranties of merchantability and fitness for a particular purpose. Should the mineral lease awarded by the Louisiana State Mineral Board be subsequently modified, cancelled or abrogated due to the existence of conflicting leases, operating agreements, private claims or other future obligations or conditions which may affect all or any portion of the leased Tract, it shall not relieve the Lessee of the obligation to pay any bonus due thereon to the Louisiana State Mineral Board, nor shall the Louisiana State Mineral Board be obligated to refund any consideration paid by the Lessor prior to such modification, cancellation, or abrogation, including, but not limited to, bonuses, rentals and royalties.

NOTE: The Office of Mineral Resources will require a minimum bonus of \$350 per acre and a minimum royalty of 25%.

NOTE: This tract is located in The Pass-a-Loutre WMA under the jurisdiction of the Louisiana Department of Wildlife and Fisheries which has promulgated rules and regulations for the protection of game and wildlife on the aforesaid Tract and, therefore, shall be subject to said rules and regulations, a copy of which shall be attached to the mineral lease. In addition to the specific rules and regulations applicable, the following shall apply regarding operations under this mineral lease:

1. No activities will be allowed without written authorization of the Louisiana Department of Wildlife and Fisheries. All projects will be coordinated and approved by the Pass-A-Loutre WMA Supervisor prior to any activities on the wildlife management area.
2. Proposed projects will be evaluated on a case by case basis. Modifications to proposed project features including but not limited to access routes, well sites, flowlines and appurtenant structures may be required by the Louisiana Department of Wildlife and Fisheries.
3. Compliance with the Pass-A-Loutre WMA regulations will be required unless otherwise specified by the Department.
4. Compensatory mitigation will be required to offset unavoidable habitat impacts.
5. Removal of all structures, facilities and equipment will be required within 120 days of abandonment unless otherwise agreed to by the Department.
6. No activities will be allowed during the hunting season unless approved by the department.
7. Prior to submitting applications for wetland permits to Federal and State permitting agencies, the leaseholder shall coordinate project details with the Department. Contact person for the Department will be Mike Windham at 504-568-5886 or (225) 765-2807.

NOTE: The State of Louisiana does hereby reserve, and this lease shall be subject to, the imprescriptible right of surface use in the nature of a servitude in favor of the Department of Natural Resources, including its Offices and Commissions, for the sole purpose of implementing, constructing, servicing and maintaining approved coastal zone management and/or restoration projects. Utilization of any and all rights derived under this lease by the mineral lessee, its agents, successors or assigns, shall not interfere with nor hinder the reasonable surface use by the Department of Natural Resources, its Offices or Commissions, as herein above reserved.

NOTE: The Department of Wildlife and Fisheries has designated certain areas in the coastal waters of the State of Louisiana as Oyster Seed Bed Areas. The exact location of those Seed Bed Areas must be obtained from the Department of Wildlife and Fisheries and any work done under a mineral lease from the State of Louisiana may necessarily be conducted in conformity with the rules and regulations promulgated by the said Department of Wildlife and Fisheries for Oyster Seed Bed Areas.

Applicant: JAMES "PETE" LONGSTREET

Bidder	Cash Payment	Price/Acre	Rental	Oil	Gas	Other

Legend
08050029 Wildlife
DOQQ2004

GULF OF MEXICO

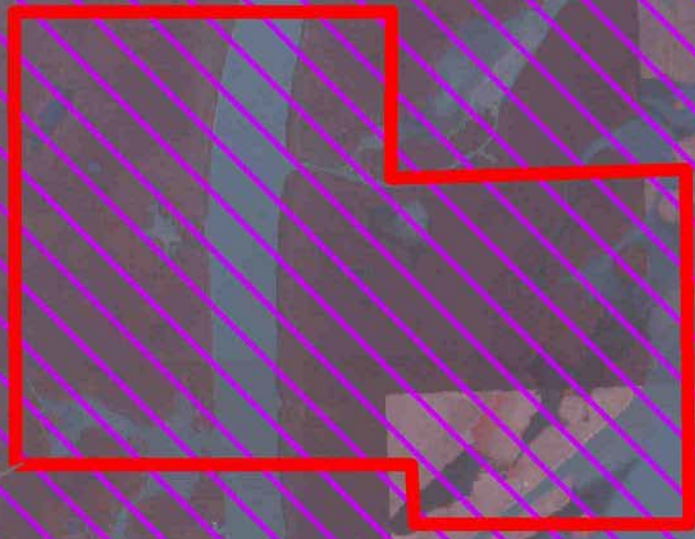
GULF OF MEXICO

PLAQUEMINES PARISH

PASS A LOUTRE WMA

P.O.B.

MISSISSIPPI RIVER



TRACT 39845 - Plaquemines Parish, Louisiana

All State owned lands and water bottoms located within the boundaries of the Pass-A-Loutre Wildlife Management Area as defined by the Department of Wildlife and Fisheries incorporating a title opinion from the Office of the Governor dated August 3, 1998, not presently under mineral lease by the State of Louisiana on May 14, 2008, all as set forth following: Beginning at a point within the Pass-A-Loutre Wildlife Management Area, having Coordinates of X = 2,700,950.26 and Y = 173,716.53; thence East 3,765.43 feet to a point having Coordinates of X = 2,704,715.69 and Y = 173,716.53; thence South 2,908.53 feet to a point having Coordinates of X = 2,704,715.69 and Y = 170,808.00; thence West 1,005.46 feet to a point having Coordinates of X = 2,703,710.23 and Y = 170,808.00; thence South approximately 437 feet to a point on the boundary of State Lease No. 214, as amended, and State Lease No. 1393 having a Coordinate of X = 2,703,710.23; thence along the boundary of said State Lease No. 214 and said State Lease No. 1393 the following courses: Westerly, Northerly and Westerly to a point of intersection with a North-South line having a Coordinate X = 2,700,950.26; thence North approximately 706 feet to the point of beginning, **LESS AND EXCEPT** that portion, if any, of State Lease No. 214, as amended, and State Lease No. 1393 which lies within the above described tract, containing approximately **260 acres, LESS AND EXCEPT** any privately owned land that may be located within the above described Tract, if any, comprising approximately 0 acres, leaving a total of **260 net acres** of State owned land and water bottoms within the above described Tract, all as more particularly outlined on a plat on file in the Office of Mineral Resources, Department of Natural Resources. All bearings, distances and coordinates are based on Louisiana Coordinate System of 1927, (South Zone).

NOTE: The above description of the Tract nominated for lease has been provided and corrected, where required, exclusively by the nomination party. Any mineral lease selected from this Tract and awarded by the Louisiana State Mineral Board shall be without warranty of any kind, either express, implied, or statutory, including, but not limited to, the implied warranties of merchantability and fitness for a particular purpose. Should the mineral lease awarded by the Louisiana State Mineral Board be subsequently modified, cancelled or abrogated due to the existence of conflicting leases, operating agreements, private claims or other future obligations or conditions which may affect all or any portion of the leased Tract, it shall not relieve the Lessee of the obligation to pay any bonus due thereon to the Louisiana State Mineral Board, nor shall the Louisiana State Mineral Board be obligated to refund any consideration paid by the Lessor prior to such modification, cancellation, or abrogation, including, but not limited to, bonuses, rentals and royalties.

NOTE: The Office of Mineral Resources will require a minimum bonus of \$350 per acre and a minimum royalty of 25%.

NOTE: This tract is located in The Pass-a-Loutre WMA under the jurisdiction of the Louisiana Department of Wildlife and Fisheries which has promulgated rules and regulations for the protection of game and wildlife on the aforesaid Tract and, therefore, shall be subject to said rules and regulations, a copy of which shall be attached to the mineral lease. In addition to the specific rules and regulations applicable, the following shall apply regarding operations under this mineral lease:

1. No activities will be allowed without written authorization of the Louisiana Department of Wildlife and Fisheries. All projects will be coordinated and approved by the Pass-A-Loutre WMA Supervisor prior to any activities on the wildlife management area.
2. Proposed projects will be evaluated on a case by case basis. Modifications to proposed project features including but not limited to access routes, well sites, flowlines and appurtenant structures may be required by the Louisiana Department of Wildlife and Fisheries.
3. Compliance with the Pass-A-Loutre WMA regulations will be required unless otherwise specified by the Department.
4. Compensatory mitigation will be required to offset unavoidable habitat impacts.
5. Removal of all structures, facilities and equipment will be required within 120 days of abandonment unless otherwise agreed to by the Department.
6. No activities will be allowed during the hunting season unless approved by the department.
7. Prior to submitting applications for wetland permits to Federal and State permitting agencies, the leaseholder shall coordinate project details with the Department. Contact person for the Department will be Mike Windham at 504-568-5886 or (225) 765-2807.

NOTE: The State of Louisiana does hereby reserve, and this lease shall be subject to, the imprescriptible right of surface use in the nature of a servitude in favor of the Department of Natural Resources, including its Offices and Commissions, for the sole purpose of implementing, constructing, servicing and maintaining approved coastal zone management and/or restoration projects. Utilization of any and all rights derived under this lease by the mineral lessee, its agents, successors or assigns, shall not interfere with nor hinder the reasonable surface use by the Department of Natural Resources, its Offices or Commissions, as herein above reserved.

NOTE: The Department of Wildlife and Fisheries has designated certain areas in the coastal waters of the State of Louisiana as Oyster Seed Bed Areas. The exact location of those Seed Bed Areas must be obtained from the Department of Wildlife and Fisheries and any work done under a mineral lease from the State of Louisiana may necessarily be conducted in conformity with the rules and regulations promulgated by the said Department of Wildlife and Fisheries for Oyster Seed Bed Areas.

Applicant: JAMES "PETE" LONGSTREET

Bidder	Cash Payment	Price/Acre	Rental	Oil	Gas	Other

Legend
08050028
Wildlife
Active_Leases
DOQQ2004

PLAQUEMINES PARISH

PASS A LOUTRE WMA

P.O.B.

SL 214

SL 1393

