

TRACT 39846 - Pointe Coupee Parish, Louisiana

All of the mineral rights only under land adjudicated to and acquired by the State of Louisiana in and through a proper tax sale, and subsequently alienated by the State which retained the mineral rights thereto, and which is not under valid mineral lease from the State of Louisiana on May 14, 2008, situated in Pointe Coupee Parish, Louisiana, and being more fully described as follows: That portion of the Southwest quarter of Fractional Section 10 Township 5 South, Range 9 East, Pointe Coupee Parish, Louisiana, and that portion of the Northwest quarter and the Northwest quarter of the Northeast quarter of Fractional Section 15, of said township, being the same lands adjudicated to the State of Louisiana for nonpayment of taxes by Estate of Mrs. O. Joffrion for the year of 1914 as recorded in COB E, Entry No. 8357 of the Pointe Coupee Parish Conveyance records and the mineral rights reserved by the State of Louisiana in that Sheriff Sale to Allen R. Wurtele dated July 3, 1937 recorded in COB M 29, Page 18 of the Pointe Coupee Parish Conveyance records, that certain tract or parcel of land shown as Tract 3 and Tract 6 on the Unit Survey Plat of the Judge Digby Upper TUSC RA SU L, as per Conservation Order No. 1046 A 3, effective April 19, 1983, **LESS AND EXCEPT** existing State Lease No. 19512; containing approximately **62.222 acres**, all as more particularly outlined on a plat on file in the Office of Mineral Resources, Department of Natural Resources. All bearings, distances and coordinates are based on Louisiana Coordinate System of 1927, (North or South Zone), where applicable.

NOTE: The above description of the Tract nominated for lease has been provided and corrected, where required, exclusively by the nomination party. Any mineral lease selected from this Tract and awarded by the Louisiana State Mineral Board shall be without warranty of any kind, either express, implied, or statutory, including, but not limited to, the implied warranties of merchantability and fitness for a particular purpose. Should the mineral lease awarded by the Louisiana State Mineral Board be subsequently modified, cancelled or abrogated due to the existence of conflicting leases, operating agreements, private claims or other future obligations or conditions which may affect all or any portion of the leased Tract, it shall not relieve the Lessee of the obligation to pay any bonus due thereon to the Louisiana State Mineral Board, nor shall the Louisiana State Mineral Board be obligated to refund any consideration paid by the Lessor prior to such modification, cancellation, or abrogation, including, but not limited to, bonuses, rentals and royalties.

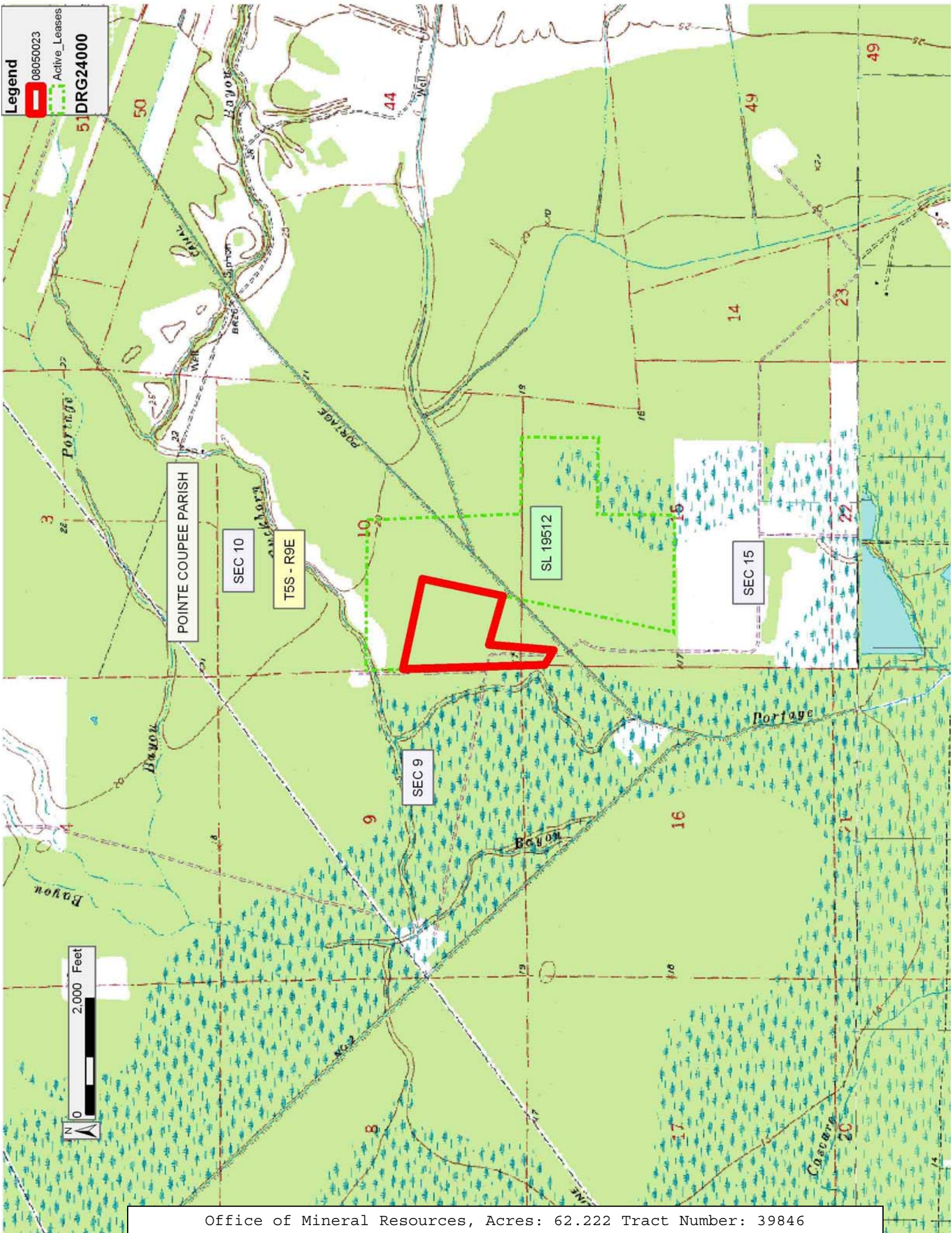
NOTE: The State of Louisiana owns only the mineral rights on this tract; the surface and other rights of ownership have been sold or patented out by the State. Because the surface is not owned by the State, no surface activity on this tract undertaken in conjunction with any operations under any mineral lease given on this tract will be allowed without prior approval of the surface owner and further, no such right of surface use shall be deemed to have been given as part of any mineral lease by the State of Louisiana on this tract.

Applicant: SUNCOAST LAND SERVICES, INC.

Bidder	Cash Payment	Price/Acre	Rental	Oil	Gas	Other

Legend

- 08050023
- Active_Leases
- DRG24000



Office of Mineral Resources, Acres: 62.222 Tract Number: 39846

TRACT 39847 - Pointe Coupee Parish, Louisiana

All of the mineral rights only under land adjudicated to and acquired by the State of Louisiana in and through a proper tax sale, and subsequently alienated by the State which retained the mineral rights thereto, and which is not under valid mineral lease from the State of Louisiana on May 14, 2008, situated in Pointe Coupee Parish, Louisiana, and being more fully described as follows: That portion of the Northwest quarter of the Northeast quarter of Fractional Section 15, of Township 5 South, Range 9 East, Pointe Coupee Parish, Louisiana, being the same lands adjudicated to the State of Louisiana for nonpayment of taxes by Estate of Mrs. O. Joffrion for the year of 1914 as recorded in COB E, Entry No. 8357 of the Pointe Coupee Parish Conveyance records and the mineral rights reserved by the State of Louisiana in that Sheriff Sale to Allen R. Wurtele dated July 3, 1937 recorded in COB M 29, Page 18 of the Pointe Coupee Parish Conveyance records, that certain tract or parcel of land shown as Tract 6 on the Unit Survey Plat of the Judge Digby Upper TUSC RA SU L, as per Conservation Order No. 1046 A 3, effective April 19, 1983, **LESS AND EXCEPT** existing State Lease No. 19512; containing approximately **0.185 acres**, all as more particularly outlined on a plat on file in the Office of Mineral Resources, Department of Natural Resources. All bearings, distances and coordinates are based on Louisiana Coordinate System of 1927, (North or South Zone), where applicable.

NOTE: The above description of the Tract nominated for lease has been provided and corrected, where required, exclusively by the nomination party. Any mineral lease selected from this Tract and awarded by the Louisiana State Mineral Board shall be without warranty of any kind, either express, implied, or statutory, including, but not limited to, the implied warranties of merchantability and fitness for a particular purpose. Should the mineral lease awarded by the Louisiana State Mineral Board be subsequently modified, cancelled or abrogated due to the existence of conflicting leases, operating agreements, private claims or other future obligations or conditions which may affect all or any portion of the leased Tract, it shall not relieve the Lessee of the obligation to pay any bonus due thereon to the Louisiana State Mineral Board, nor shall the Louisiana State Mineral Board be obligated to refund any consideration paid by the Lessor prior to such modification, cancellation, or abrogation, including, but not limited to, bonuses, rentals and royalties.

NOTE: The State of Louisiana owns only the mineral rights on this tract; the surface and other rights of ownership have been sold or patented out by the State. Because the surface is not owned by the State, no surface activity on this tract undertaken in conjunction with any operations under any mineral lease given on this tract will be allowed without prior approval of the surface owner and further, no such right of surface use shall be deemed to have been given as part of any mineral lease by the State of Louisiana on this tract.

Applicant: SUNCOAST LAND SERVICES, INC.

Bidder	Cash Payment	Price/Acre	Rental	Oil	Gas	Other

Legend
08050022
Active_Leases
DRG24000

