

**TRACT 39836 - Jefferson and Plaquemines Parishes, Louisiana**

All of the lands now or formerly constituting the beds and bottoms of all water bodies of every nature and description as to which title is vested in the State of Louisiana, together with all islands arising therein and other lands formed by accretion or by reliction, where allowed by law, excepting tax adjudicated lands, and not presently under mineral lease on May 14, 2008, situated in Jefferson and Plaquemines Parishes, Louisiana, and more particularly described as follows: Beginning at a point having Coordinates of X = 2,443,952.55 and Y = 267,760.13; thence West 4,770.00 feet to a point having Coordinates of X = 2,439,182.55 and Y = 267,760.13; thence North 5,625.59 feet to a point being the southwest corner of State Lease No. 3035, as amended having Coordinates of X = 2,439,182.54 and Y = 273,385.72; thence North 89 degrees 18 minutes 14 seconds East 4,770.36 feet along the southern boundary of said State Lease No. 3035, as amended, to a point having Coordinates of X = 2,443,952.55 and Y = 273,443.67; thence South 5,683.54 feet to the point of beginning, containing approximately **619.20 acres**, all as more particularly outlined on a plat on file in the Office of Mineral Resources, Department of Natural Resources. All bearings, distances and coordinates are based on Louisiana Coordinate System of 1927, (North or South Zone), where applicable.

NOTE: The above description of the Tract nominated for lease has been provided and corrected, where required, exclusively by the nomination party. Any mineral lease selected from this Tract and awarded by the Louisiana State Mineral Board shall be without warranty of any kind, either express, implied, or statutory, including, but not limited to, the implied warranties of merchantability and fitness for a particular purpose. Should the mineral lease awarded by the Louisiana State Mineral Board be subsequently modified, cancelled or abrogated due to the existence of conflicting leases, operating agreements, private claims or other future obligations or conditions which may affect all or any portion of the leased Tract, it shall not relieve the Lessee of the obligation to pay any bonus due thereon to the Louisiana State Mineral Board, nor shall the Louisiana State Mineral Board be obligated to refund any consideration paid by the Lessor prior to such modification, cancellation, or abrogation, including, but not limited to, bonuses, rentals and royalties.

NOTE: The State of Louisiana does hereby reserve, and this lease shall be subject to, the imprescriptible right of surface use in the nature of a servitude in favor of the Department of Natural Resources, including its Offices and Commissions, for the sole purpose of implementing, constructing, servicing and maintaining approved coastal zone management and/or restoration projects. Utilization of any and all rights derived under this lease by the mineral lessee, its agents, successors or assigns, shall not interfere with nor hinder the reasonable surface use by the Department of Natural Resources, its Offices or Commissions, as herein above reserved.

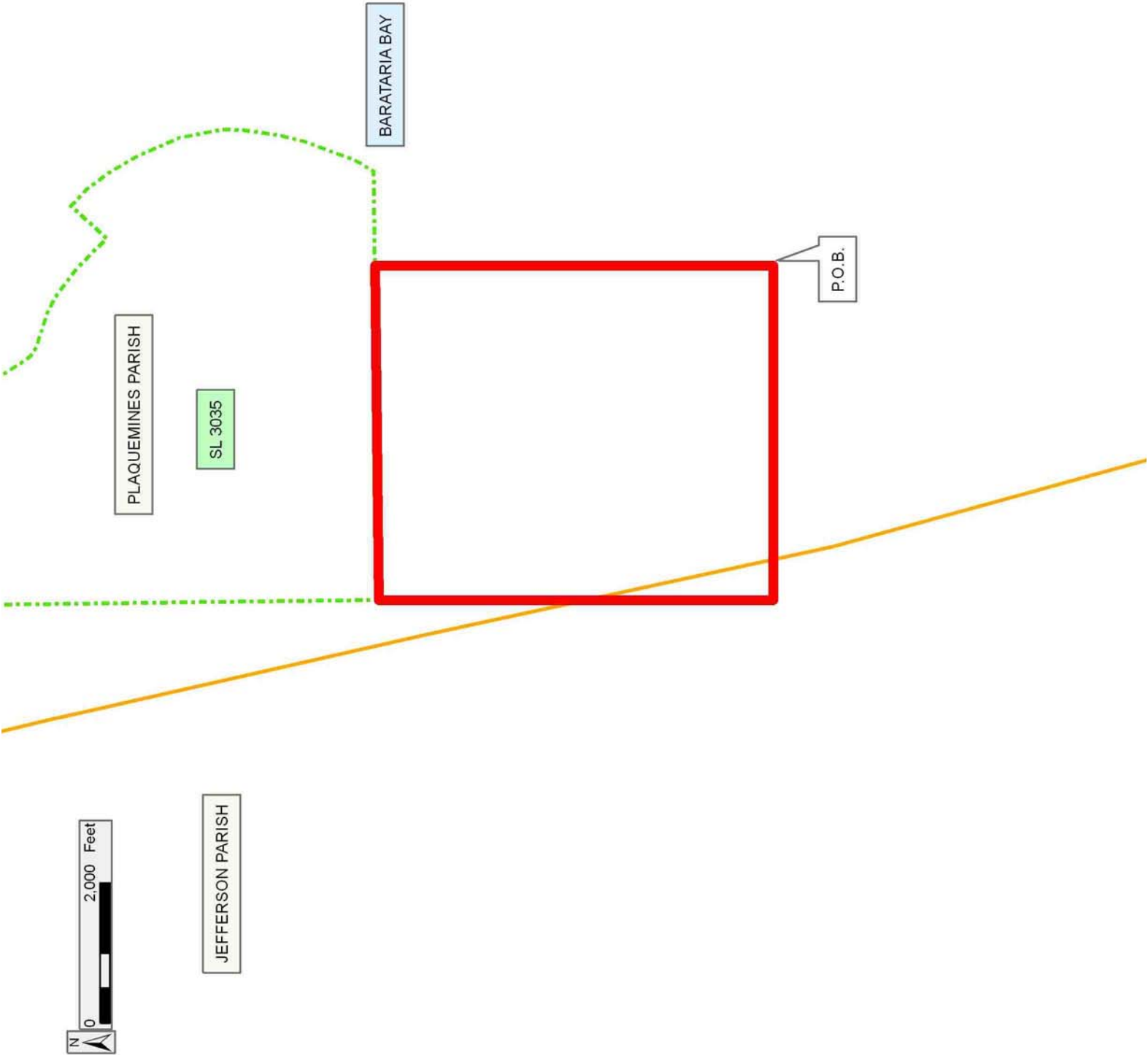
NOTE: The Department of Wildlife and Fisheries has designated certain areas in the coastal waters of the State of Louisiana as Oyster Seed Bed Areas. The exact location of those Seed Bed Areas must be obtained from the Department of Wildlife and Fisheries and any work done under a mineral lease from the State of Louisiana may necessarily be conducted in conformity with the rules and regulations promulgated by the said Department of Wildlife and Fisheries for Oyster Seed Bed Areas.

Applicant: ROBERT A. SCHROEDER, INC.

Bidder	Cash Payment	Price/Acre	Rental	Oil	Gas	Other

**Legend**

- 08050019
- Active\_Leases
- Counties



**TRACT 39837 - Portion of Block 113, South Timbalier Area, Revised, Terrebonne Parish, Louisiana**

All of the lands now or formerly constituting the beds and bottoms of all water bodies of every nature and description as to which title is vested in the State of Louisiana, together with all islands arising therein and other lands formed by accretion or by reliction, where allowed by law, excepting tax adjudicated lands, and not presently under mineral lease on May 14, 2008, situated in Terrebonne Parish, Louisiana, and more particularly described as follows: Beginning at a point having Coordinates of X = 2,210,242.65 and Y = 167,017.48; thence Northerly approximately 4,731 feet to corner located on the South boundary of a portion of State Lease No. 199, as amended; thence along the South boundary of said portion of State Lease No. 199 the following courses and distances: Northerly 1,400.00 feet and Easterly 4,230.00 feet to its Southeast corner, also being the Southwest corner of State Lease No. 18167 having Coordinates of X = 2,214,464.40 and Y = 173,173.00; thence along the South and West boundary of said State Lease No. 18167 the following courses and distances: North 89 degrees 38 minutes 19 seconds East 5,977.80 feet to a corner having Coordinates of X = 2,220,442.08 and Y = 173,210.70 and South 00 degrees 10 minutes 26 seconds East 2,610.71 feet to the Northeast corner of State Lease No. 16510, as amended, having Coordinates of X = 2,220,450.00 and Y = 170,600.00; thence along the North and West boundary of said State Lease No. 16510 the following courses and distances: West 7,900.00 feet to a corner having Coordinates of X = 2,212,550.00 and Y = 170,600.00 and South 2,710.00 feet to its Southwest corner, also being the Northwest corner of State Lease No. 16511, having Coordinates of X = 2,212,550.00 and Y = 167,890.00; thence along the boundary of said State Lease No. 16511 the following courses and distances: South approximately 300 feet to a point having a Coordinate of X = 2,212,550.00 and Southeasterly approximately 586 feet to the Northwest corner of State Lease No. 16705 having a Coordinate of X = 2,213,128.02; thence South approximately 482 feet along the West boundary of said State Lease No. 16705 to a point having Coordinates of X = 2,213,128.02 and Y = 167,017.48; thence West approximately 2,886 feet to the point of beginning, **LESS AND EXCEPT** any portion of State Lease No. 199, as amended, any portion of State Lease No. 16511 that may lie within the above described tract, containing approximately **794 acres**, all as more particularly outlined on a plat on file in the Office of Mineral Resources, Department of Natural Resources. All bearings, distances and coordinates are based on Louisiana Coordinate System of 1927, (North or South Zone), where applicable.

NOTE: The above description of the Tract nominated for lease has been provided and corrected, where required, exclusively by the nomination party. Any mineral lease selected from this Tract and awarded by the Louisiana State Mineral Board shall be without warranty of any kind, either express, implied, or statutory, including, but not limited to, the implied warranties of merchantability and fitness for a particular purpose. Should the mineral lease awarded by the Louisiana State Mineral

Board be subsequently modified, cancelled or abrogated due to the existence of conflicting leases, operating agreements, private claims or other future obligations or conditions which may affect all or any portion of the leased Tract, it shall not relieve the Lessee of the obligation to pay any bonus due thereon to the Louisiana State Mineral Board, nor shall the Louisiana State Mineral Board be obligated to refund any consideration paid by the Lessor prior to such modification, cancellation, or abrogation, including, but not limited to, bonuses, rentals and royalties.

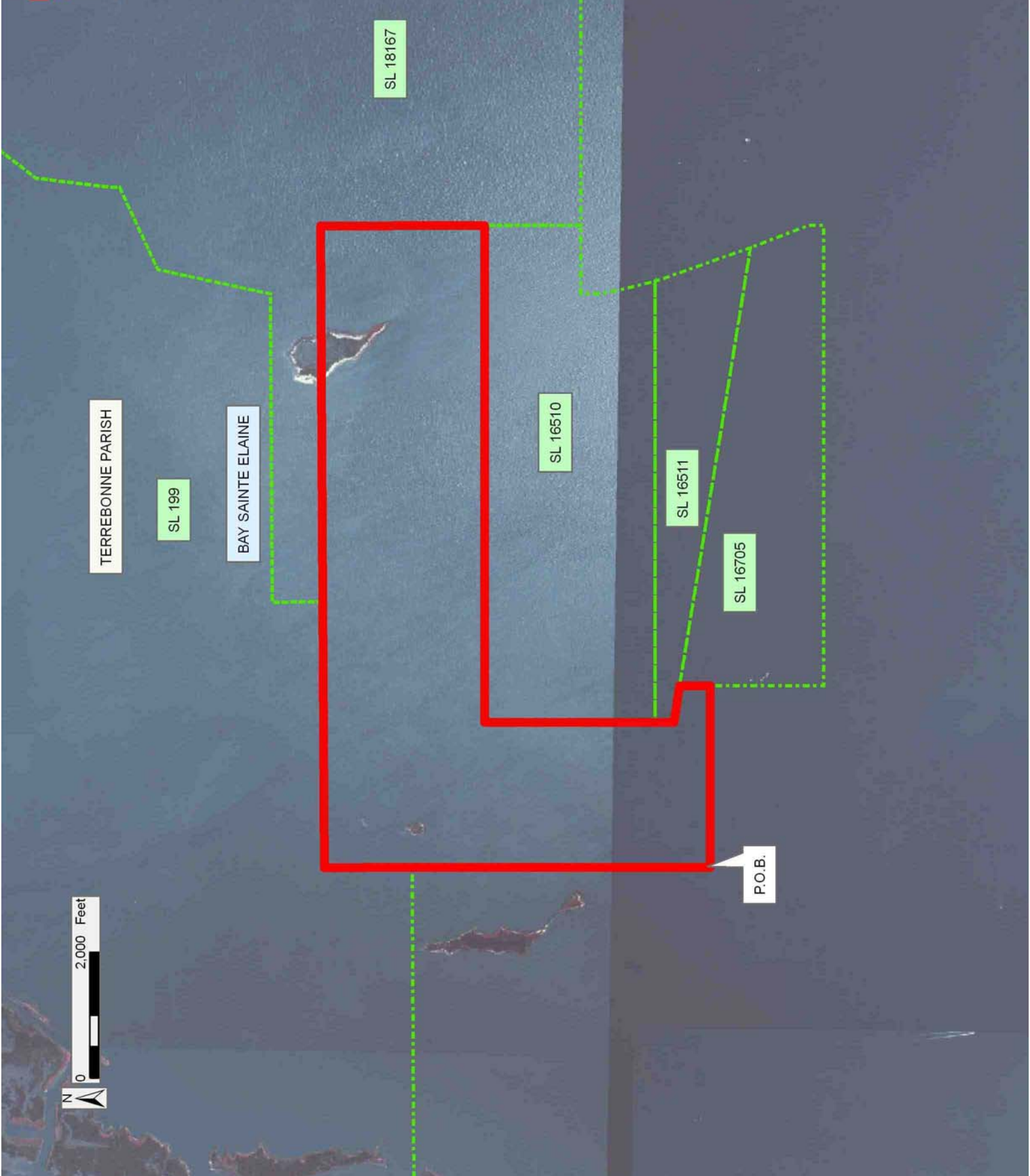
NOTE: The State of Louisiana does hereby reserve, and this lease shall be subject to, the imprescriptible right of surface use in the nature of a servitude in favor of the Department of Natural Resources, including its Offices and Commissions, for the sole purpose of implementing, constructing, servicing and maintaining approved coastal zone management and/or restoration projects. Utilization of any and all rights derived under this lease by the mineral lessee, its agents, successors or assigns, shall not interfere with nor hinder the reasonable surface use by the Department of Natural Resources, its Offices or Commissions, as herein above reserved.

NOTE: The Department of Wildlife and Fisheries has designated certain areas in the coastal waters of the State of Louisiana as Oyster Seed Bed Areas. The exact location of those Seed Bed Areas must be obtained from the Department of Wildlife and Fisheries and any work done under a mineral lease from the State of Louisiana may necessarily be conducted in conformity with the rules and regulations promulgated by the said Department of Wildlife and Fisheries for Oyster Seed Bed Areas.

Applicant: THEOPHILUS OIL, GAS & LAND SERVICES, LLC

Bidder	Cash Payment	Price/Acre	Rental	Oil	Gas	Other

**Legend**  
08050047  
Active\_Leases  
DOQQ2004



**TRACT 39838 - Terrebonne Parish, Louisiana**

All of the lands now or formerly constituting the beds and bottoms of all water bodies of every nature and description as to which title is vested in the State of Louisiana, together with all islands arising therein and other lands formed by accretion or by reliction, where allowed by law, excepting tax adjudicated lands, and not presently under mineral lease on May 14, 2008, situated in Terrebonne Parish, Louisiana, and more particularly described as follows: Beginning at a point having Coordinates of X = 2,204,890.03 and Y = 162,317.48; thence Northerly approximately 9,400 feet to the Southeast corner of a portion of State Lease No. 199, as amended; thence Easterly 5,352.71 feet along the South boundary of said portion of State Lease No. 199 to its Southernmost Southeast corner; thence Southerly approximately 4,731 feet to a point having Coordinates of X = 2,210,242.65 and Y = 167,017.48; thence South 4,700.00 feet to a point having Coordinates of X = 2,210,242.65 and Y = 162,317.48; thence West 5,352.62 feet to the point of beginning, **LESS AND EXCEPT** any portion of State Lease No. 199, as amended, that may lie within the above described tract, containing approximately **1,147 acres**, all as more particularly outlined on a plat on file in the Office of Mineral Resources, Department of Natural Resources. All bearings, distances and coordinates are based on Louisiana Coordinate System of 1927, (North or South Zone), where applicable.

NOTE: The above description of the Tract nominated for lease has been provided and corrected, where required, exclusively by the nomination party. Any mineral lease selected from this Tract and awarded by the Louisiana State Mineral Board shall be without warranty of any kind, either express, implied, or statutory, including, but not limited to, the implied warranties of merchantability and fitness for a particular purpose. Should the mineral lease awarded by the Louisiana State Mineral Board be subsequently modified, cancelled or abrogated due to the existence of conflicting leases, operating agreements, private claims or other future obligations or conditions which may affect all or any portion of the leased Tract, it shall not relieve the Lessee of the obligation to pay any bonus due thereon to the Louisiana State Mineral Board, nor shall the Louisiana State Mineral Board be obligated to refund any consideration paid by the Lessor prior to such modification, cancellation, or abrogation, including, but not limited to, bonuses, rentals and royalties.

NOTE: The State of Louisiana does hereby reserve, and this lease shall be subject to, the imprescriptible right of surface use in the nature of a servitude in favor of the Department of Natural Resources, including its Offices and Commissions, for the sole purpose of implementing, constructing, servicing and maintaining approved coastal zone management and/or restoration projects. Utilization of any and all rights derived under this lease by the mineral lessee, its agents, successors or assigns, shall not interfere with nor hinder the reasonable surface use by the Department of Natural Resources, its Offices or Commissions, as herein above reserved.

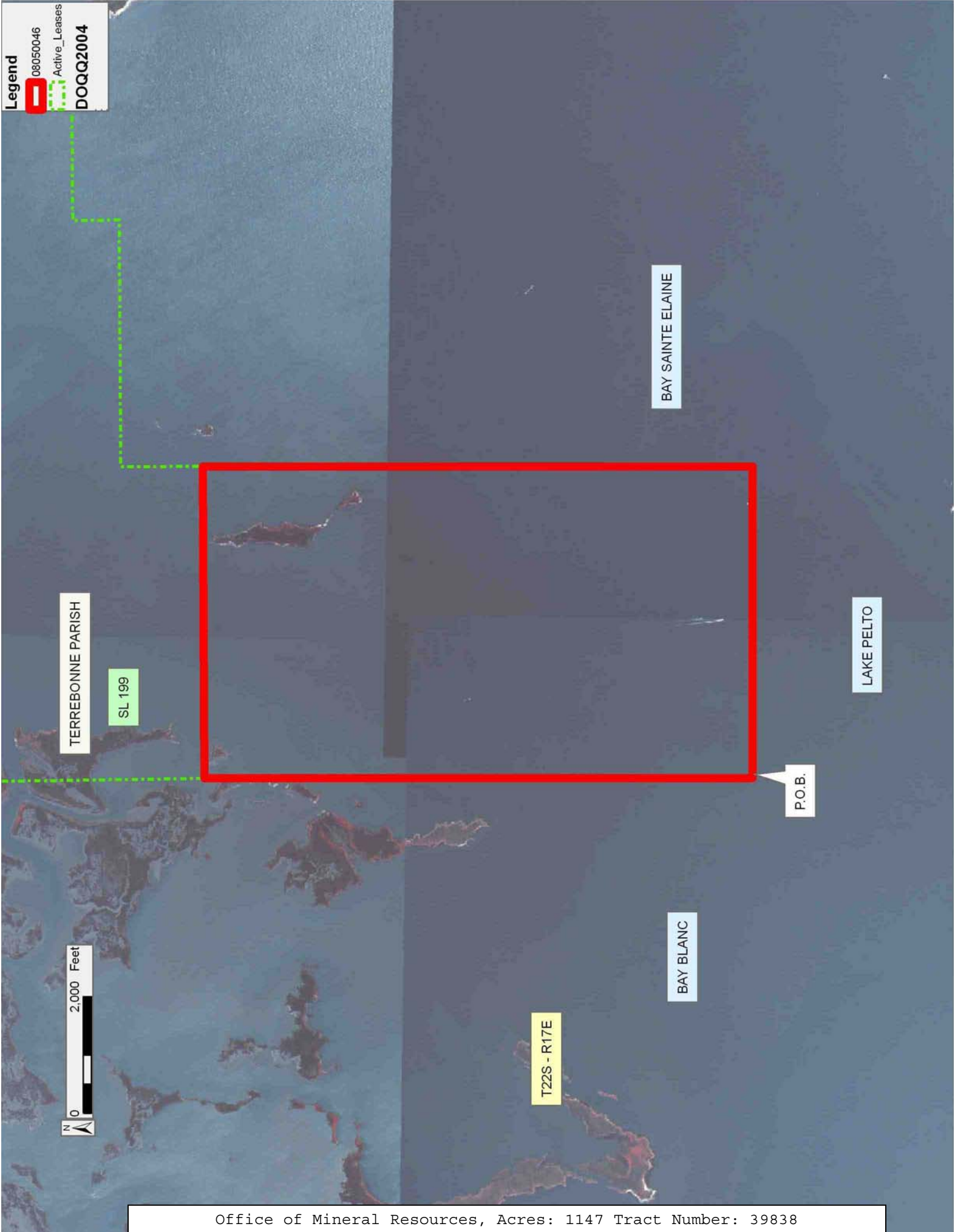
NOTE: The Department of Wildlife and Fisheries has designated certain areas in the coastal waters of the State of Louisiana as Oyster Seed Bed Areas. The exact location of those Seed Bed Areas must be obtained from the Department of Wildlife and Fisheries and any work done under a mineral lease from the State of Louisiana may necessarily be conducted in conformity with the rules and regulations promulgated by the said Department of Wildlife and Fisheries for Oyster Seed Bed Areas.

Applicant: THEOPHILUS OIL, GAS & LAND SERVICES, LLC

Bidder	Cash Payment	Price/Acre	Rental	Oil	Gas	Other



**Legend**  
08050046  
Active\_Leases  
DOQQ2004



**TRACT 39839 - Terrebonne Parish, Louisiana**

All of the lands now or formerly constituting the beds and bottoms of all water bodies of every nature and description as to which title is vested in the State of Louisiana, together with all islands arising therein and other lands formed by accretion or by reliction, where allowed by law, excepting tax adjudicated lands, and not presently under mineral lease on May 14, 2008, situated in Terrebonne Parish, Louisiana, and more particularly described as follows: Beginning at a point having Coordinates of X = 2,210,242.65 and Y = 167,017.48; thence East 2,885.37 feet to a point on the West boundary of State Lease No. 16705 having Coordinates of X = 2,213,128.02 and Y = 167,017.48; thence along the West and South boundary of said State Lease No. 16705 the following courses and distances: South 1,807.74 feet to a corner having Coordinates of X = 2,213,128.02 and Y = 165,209.74 and East 6,142.68 feet to a point of intersection with the West boundary of State Lease No. 188, as amended, having Coordinates of X = 2,219,270.70 and Y = 165,209.74; thence along the West and North boundary of said State Lease No. 188 the following courses and distances: South 00 degrees 20 minutes 05 seconds East 2,551.71 feet to a corner having Coordinates of X = 2,219,285.60 and Y = 162,658.08, South 88 degrees 47 minutes 51 seconds West 3,170.56 feet to a corner having Coordinates of X = 2,216,115.74 and Y = 162,591.54 and South 00 degrees 20 minutes 05 seconds East 274.06 feet to a point having Coordinates of X = 2,216,117.34 and Y = 162,317.48; thence West 5,874.69 feet to a point having Coordinates of X = 2,210,242.65 and Y = 162,317.48; thence North 4,700.00 feet to the point of beginning, containing approximately **697.37 acres**, all as more particularly outlined on a plat on file in the Office of Mineral Resources, Department of Natural Resources. All bearings, distances and coordinates are based on Louisiana Coordinate System of 1927, (North or South Zone), where applicable.

NOTE: The above description of the Tract nominated for lease has been provided and corrected, where required, exclusively by the nomination party. Any mineral lease selected from this Tract and awarded by the Louisiana State Mineral Board shall be without warranty of any kind, either express, implied, or statutory, including, but not limited to, the implied warranties of merchantability and fitness for a particular purpose. Should the mineral lease awarded by the Louisiana State Mineral Board be subsequently modified, cancelled or abrogated due to the existence of conflicting leases, operating agreements, private claims or other future obligations or conditions which may affect all or any portion of the leased Tract, it shall not relieve the Lessee of the obligation to pay any bonus due thereon to the Louisiana State Mineral Board, nor shall the Louisiana State Mineral Board be obligated to refund any consideration paid by the Lessor prior to such modification, cancellation, or abrogation, including, but not limited to, bonuses, rentals and royalties.

NOTE: The State of Louisiana does hereby reserve, and this lease shall be subject to, the imprescriptible right of surface use in the nature of a servitude in favor of the Department of Natural Resources, including its




Offices and Commissions, for the sole purpose of implementing, constructing, servicing and maintaining approved coastal zone management and/or restoration projects. Utilization of any and all rights derived under this lease by the mineral lessee, its agents, successors or assigns, shall not interfere with nor hinder the reasonable surface use by the Department of Natural Resources, its Offices or Commissions, as herein above reserved.

NOTE: The Department of Wildlife and Fisheries has designated certain areas in the coastal waters of the State of Louisiana as Oyster Seed Bed Areas. The exact location of those Seed Bed Areas must be obtained from the Department of Wildlife and Fisheries and any work done under a mineral lease from the State of Louisiana may necessarily be conducted in conformity with the rules and regulations promulgated by the said Department of Wildlife and Fisheries for Oyster Seed Bed Areas.

Applicant: THEOPHILUS OIL, GAS & LAND SERVICES, LLC

Bidder	Cash Payment	Price/Acre	Rental	Oil	Gas	Other

**Legend**

-  08050048
-  Blocks
-  Active\_Leases

