

TRACT 39826 - St. Martin and St. Mary Parishes, Louisiana

All of the lands now or formerly constituting the beds and bottoms of all water bodies of every nature and description as to which title is vested in the State of Louisiana, together with all islands arising therein and other lands formed by accretion or by reliction, where allowed by law, excepting tax adjudicated lands, and not presently under mineral lease on May 14, 2008, situated in St. Martin and St. Mary Parishes, Louisiana, and more particularly described as follows: Beginning at the Northeast corner of State Lease No. 19469 having Coordinates of X = 2,048,211.05 and Y = 387,238.40; thence East 15,922.95 feet to a point having Coordinates of X = 2,064,134.00 and Y = 387,238.40; thence South 6,135.66 feet to a point having Coordinates of X = 2,064,134.00 and Y = 381,102.74; thence West 3,039.37 feet to the Southeast corner of State Lease No. 19471 having Coordinates of X = 2,061,094.63 and Y = 381,102.74; thence along the East, North and West boundary of said State Lease No. 19471 the following courses and distances: North 3,790.43 feet to a corner having Coordinates of X = 2,061,094.63 and Y = 384,893.17, West 6,744.18 feet to a corner having Coordinates of X = 2,054,350.45 and Y = 384,893.17 and South 3,790.43 feet to its Southwest corner having Coordinates of X = 2,054,350.45 and Y = 381,102.74; thence West 6,396.58 feet to a point having Coordinates of X = 2,047,953.87 and Y = 381,102.74; thence North 1,047.66 feet to a point on the South boundary of said State Lease No. 19469 having Coordinates of X = 2,047,953.87 and Y = 382,150.40; thence along the South and East boundary of said State Lease No. 19469 the following courses and distances: East 257.18 feet to a corner having Coordinates of X = 2,048,211.05 and Y = 382,150.40 and North 5,088.00 feet to the point of beginning, containing approximately **1,662.16 acres**, all as more particularly outlined on a plat on file in the Office of Mineral Resources, Department of Natural Resources. All bearings, distances and coordinates are based on Louisiana Coordinate System of 1927, (North or South Zone), where applicable.

NOTE: The above description of the Tract nominated for lease has been provided and corrected, where required, exclusively by the nomination party. Any mineral lease selected from this Tract and awarded by the Louisiana State Mineral Board shall be without warranty of any kind, either express, implied, or statutory, including, but not limited to, the implied warranties of merchantability and fitness for a particular purpose. Should the mineral lease awarded by the Louisiana State Mineral Board be subsequently modified, cancelled or abrogated due to the existence of conflicting leases, operating agreements, private claims or other future obligations or conditions which may affect all or any portion of the leased Tract, it shall not relieve the Lessee of the obligation to pay any bonus due thereon to the Louisiana State Mineral Board, nor shall the Louisiana State Mineral Board be obligated to refund any consideration paid by the Lessor prior to such modification, cancellation, or abrogation, including, but not limited to, bonuses, rentals and royalties.

NOTE: The State of Louisiana does hereby reserve, and this lease shall be subject to, the imprescriptible right of surface use in the nature of a

servitude in favor of the Department of Natural Resources, including its Offices and Commissions, for the sole purpose of implementing, constructing, servicing and maintaining approved coastal zone management and/or restoration projects. Utilization of any and all rights derived under this lease by the mineral lessee, its agents, successors or assigns, shall not interfere with nor hinder the reasonable surface use by the Department of Natural Resources, its Offices or Commissions, as herein above reserved.

Applicant: THEOPHILUS OIL, GAS & LAND SERVICES, LLC

Bidder	Cash Payment	Price/Acre	Rental	Oil	Gas	Other

Legend

- █ 08050045
- █ Active_Leases
- █ Counties

DOQQ2004

ST MARTIN PARISH

T15S - R13E

LAKE PALOURDE

ST MARY PARISH

T16S - R13E

3,000 Feet

N

P.O.B.

SL 19471

SL 19469

TRACT 39827 - Iberia and St. Mary Parishes, Louisiana

All of the lands now or formerly constituting the beds and bottoms of all water bodies of every nature and description as to which title is vested in the State of Louisiana, together with all islands arising therein and other lands formed by accretion or by reliction, where allowed by law, excepting tax adjudicated lands, and not presently under mineral lease on May 14, 2008, situated in Iberia and St. Mary Parishes, Louisiana, and more particularly described as follows: Beginning at a point having Coordinates of X = 1,830,460.00 and Y = 368,187.00; thence East approximately 5,600 feet to a point on the Western boundary of the West Cote Blanche Bay portion of State Lease No. 340, as amended, having a Coordinate of Y = 368,187.00; thence Southerly approximately 16,178 feet along the Western boundary of said portion of said State Lease No. 340 to a point of intersection with an East-West line having a Coordinate of Y = 352,006.00; thence West approximately 8,110 feet to a point having Coordinates of X = 1,827,950.00 and Y = 352,006.00; thence North 4,004.00 feet to a point on the boundary of State Lease No. 19403 having Coordinates of X = 1,827,950.00 and Y = 356,010.00; thence South 58 degrees 13 minutes 16 seconds East 850.67 feet along the boundary of said State Lease No. 19403 to its Southernmost Southwest corner, also being the Northwest corner of State Lease No. 19404 having Coordinates of X = 1,828,673.14 and Y = 355,562.00; thence along the boundary of said State Lease No. 19404 the following courses: South 58 degrees 13 minutes 16 seconds East 3,307.74 feet; North 59 degrees 06 minutes 44 seconds East 3,233.61 feet and North 35 degrees 17 minutes 04 seconds West 100.45 feet to its Northeast corner, also being the Southeast corner of said State Lease No. 19403 having Coordinates of X = 1,834,201.97 and Y = 355,562.00; thence North 35 degrees 17 minutes 04 seconds West 6,478.06 feet along the boundary of said State Lease No. 19403 to its Northernmost corner having Coordinates of X = 1,830,460.00 and Y = 360,850.00; thence North 7,337.00 feet to the point of beginning, containing approximately **1,950 acres**, all as more particularly outlined on a plat on file in the Office of Mineral Resources, Department of Natural Resources. All bearings, distances and coordinates are based on Louisiana Coordinate System of 1927, (North or South Zone), where applicable.

NOTE: The above description of the Tract nominated for lease has been provided and corrected, where required, exclusively by the nomination party. Any mineral lease selected from this Tract and awarded by the Louisiana State Mineral Board shall be without warranty of any kind, either express, implied, or statutory, including, but not limited to, the implied warranties of merchantability and fitness for a particular purpose. Should the mineral lease awarded by the Louisiana State Mineral Board be subsequently modified, cancelled or abrogated due to the existence of conflicting leases, operating agreements, private claims or other future obligations or conditions which may affect all or any portion of the leased Tract, it shall not relieve the Lessee of the obligation to pay any bonus due thereon to the Louisiana State Mineral Board, nor shall the Louisiana State Mineral Board be obligated to refund any consideration

paid by the Lessor prior to such modification, cancellation, or abrogation, including, but not limited to, bonuses, rentals and royalties.

NOTE: The State of Louisiana does hereby reserve, and this lease shall be subject to, the imprescriptible right of surface use in the nature of a servitude in favor of the Department of Natural Resources, including its Offices and Commissions, for the sole purpose of implementing, constructing, servicing and maintaining approved coastal zone management and/or restoration projects. Utilization of any and all rights derived under this lease by the mineral lessee, its agents, successors or assigns, shall not interfere with nor hinder the reasonable surface use by the Department of Natural Resources, its Offices or Commissions, as herein above reserved.

NOTE: The Department of Wildlife and Fisheries has designated certain areas in the coastal waters of the State of Louisiana as Oyster Seed Bed Areas. The exact location of those Seed Bed Areas must be obtained from the Department of Wildlife and Fisheries and any work done under a mineral lease from the State of Louisiana may necessarily be conducted in conformity with the rules and regulations promulgated by the said Department of Wildlife and Fisheries for Oyster Seed Bed Areas.

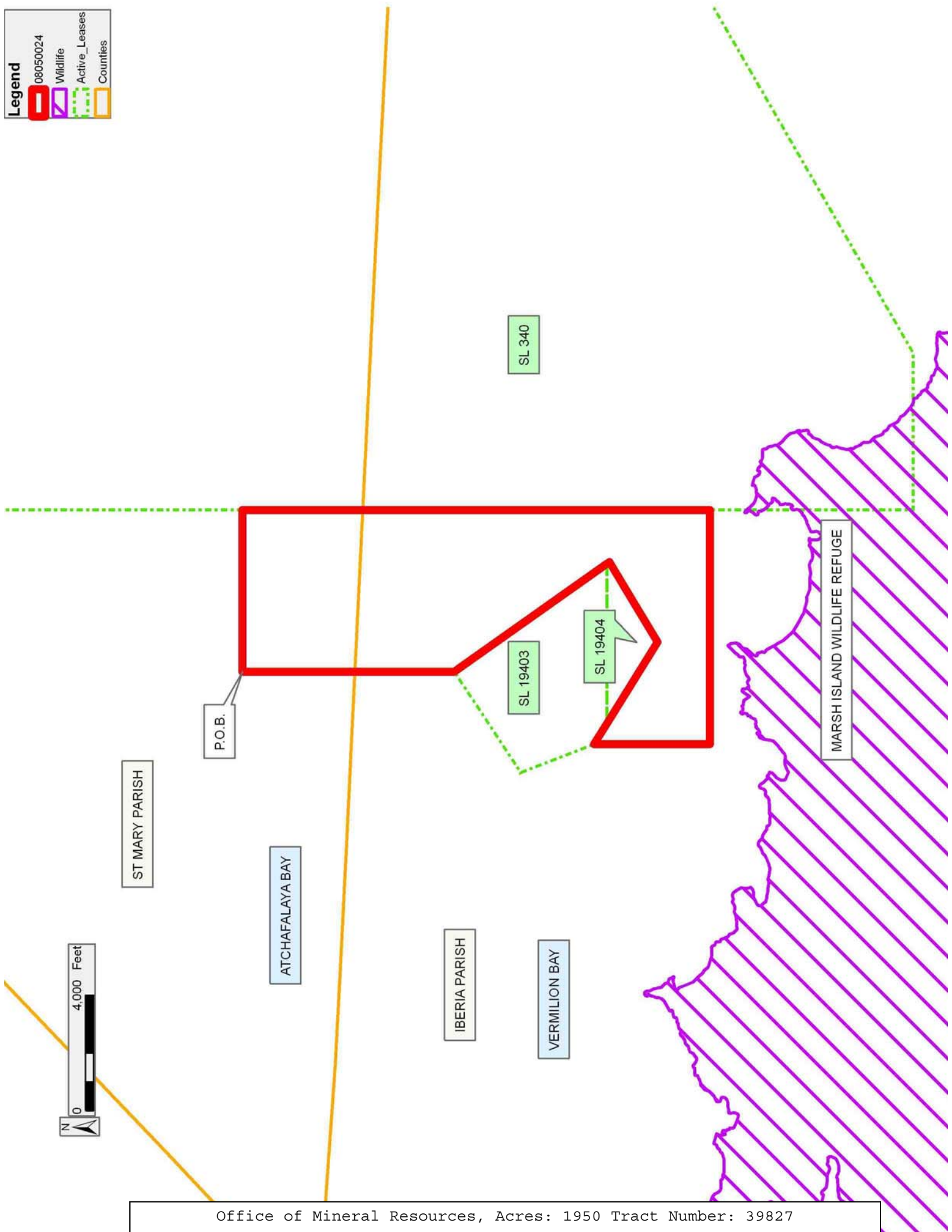
NOTE: All or a portion of this Tract lies within one nautical mile of the boundary of the Russell Sage or Marsh Island Wildlife Refuge and Game Preserve. Any activities connected with this lease conducted within this Tract which may pose potential environmental impacts to the said Wildlife Refuge and Game Preserve should be coordinated with the Louisiana Department of Wildlife and Fisheries.

Applicant: PATRICK L. DONOHUE PETROLEUM PROPERTIES, INC.

Bidder	Cash Payment	Price/Acre	Rental	Oil	Gas	Other

Legend

- 08050024
- Wildlife
- Active_Leases
- Counties



TRACT 39828 - Iberia and St. Mary Parishes, Louisiana

All of the lands now or formerly constituting the beds and bottoms of all water bodies of every nature and description as to which title is vested in the State of Louisiana, together with all islands arising therein and other lands formed by accretion or by reliction, where allowed by law, excepting tax adjudicated lands, and not presently under mineral lease on May 14, 2008, situated in Iberia and St. Mary Parishes, Louisiana, and more particularly described as follows: Beginning at a point having Coordinates of X = 1,823,329.00 and Y = 368,187.00; thence East 7,131.00 feet to a point having Coordinates of X = 1,830,460.00 and Y = 368,187.00; thence South 7,337.00 feet to the Northernmost corner of State Lease No. 19403 having Coordinates of X = 1,830,460.00 and Y = 360,850.00; thence along the boundary of said State Lease No. 19403 the following courses: South 56 degrees 39 minutes 07 seconds West 4,183.90 feet and South 21 degrees 11 minutes 46 seconds East 2,724.30 feet to its Westernmost Southwest corner having Coordinates of X = 1,827,950.00 and Y = 356,010.00; thence South 4,004.00 feet to a point having Coordinates of X = 1,827,950.00 and Y = 352,006.00; thence West 4,621.00 feet to a point having Coordinates of X = 1,823,329.00 and Y = 352,006.00; thence North 16,181.00 feet to the point of beginning, containing approximately **2,150.85 acres**, all as more particularly outlined on a plat on file in the Office of Mineral Resources, Department of Natural Resources. All bearings, distances and coordinates are based on Louisiana Coordinate System of 1927, (North or South Zone), where applicable.

NOTE: The above description of the Tract nominated for lease has been provided and corrected, where required, exclusively by the nomination party. Any mineral lease selected from this Tract and awarded by the Louisiana State Mineral Board shall be without warranty of any kind, either express, implied, or statutory, including, but not limited to, the implied warranties of merchantability and fitness for a particular purpose. Should the mineral lease awarded by the Louisiana State Mineral Board be subsequently modified, cancelled or abrogated due to the existence of conflicting leases, operating agreements, private claims or other future obligations or conditions which may affect all or any portion of the leased Tract, it shall not relieve the Lessee of the obligation to pay any bonus due thereon to the Louisiana State Mineral Board, nor shall the Louisiana State Mineral Board be obligated to refund any consideration paid by the Lessor prior to such modification, cancellation, or abrogation, including, but not limited to, bonuses, rentals and royalties.

NOTE: The State of Louisiana does hereby reserve, and this lease shall be subject to, the imprescriptible right of surface use in the nature of a servitude in favor of the Department of Natural Resources, including its Offices and Commissions, for the sole purpose of implementing, constructing, servicing and maintaining approved coastal zone management and/or restoration projects. Utilization of any and all rights derived under this lease by the mineral lessee, its agents, successors or assigns, shall not interfere with nor hinder the reasonable surface use by the

Department of Natural Resources, its Offices or Commissions, as herein above reserved.

NOTE: The Department of Wildlife and Fisheries has designated certain areas in the coastal waters of the State of Louisiana as Oyster Seed Bed Areas. The exact location of those Seed Bed Areas must be obtained from the Department of Wildlife and Fisheries and any work done under a mineral lease from the State of Louisiana may necessarily be conducted in conformity with the rules and regulations promulgated by the said Department of Wildlife and Fisheries for Oyster Seed Bed Areas.

NOTE: All or a portion of this Tract lies within one nautical mile of the boundary of the Russell Sage or Marsh Island Wildlife Refuge and Game Preserve. Any activities connected with this lease conducted within this Tract which may pose potential environmental impacts to the said Wildlife Refuge and Game Preserve should be coordinated with the Louisiana Department of Wildlife and Fisheries.

Applicant: PATRICK L. DONOHUE PETROLEUM PROPERTIES, INC.

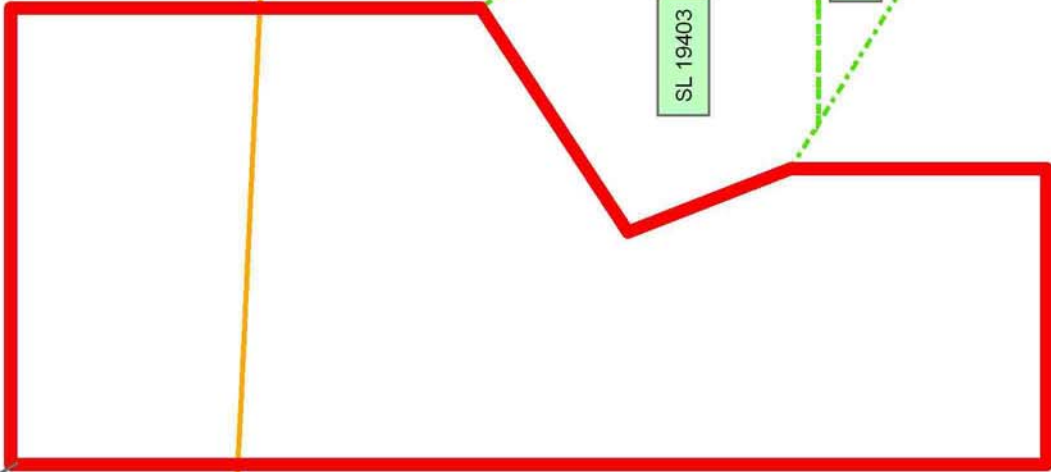
Bidder	Cash Payment	Price/Acre	Rental	Oil	Gas	Other

Legend

- 08050025
- Wildlife
- Active_Leases
- Counties

ATCHAFALAYA BAY

VERMILION BAY



SL 19404

SL 19403

MARSH ISLAND WILDLIFE REFUGE

P.O.B.



ST MARY PARISH

IBERIA PARISH

TRACT 39829 - Assumption and St. Mary Parishes, Louisiana

All of the lands now or formerly constituting the beds and bottoms of all water bodies of every nature and description as to which title is vested in the State of Louisiana, together with all islands arising therein and other lands formed by accretion or by reliction, where allowed by law, excepting tax adjudicated lands, and not presently under mineral lease on May 14, 2008, situated in Assumption and St. Mary Parishes, Louisiana, and more particularly described as follows: Beginning at a point having Coordinates of X = 2,071,550.00 and Y = 362,720.00; thence East 8,840.00 feet to a point having Coordinates of X = 2,080,390.00 and Y = 362,720.00; thence South 6,739.22 feet to a point having Coordinates of X = 2,080,390.00 and Y = 355,980.78; thence West 5,335.59 feet to the Northeast corner of Operating Agreement No. 257 having Coordinates of X = 2,075,054.41 and Y = 355,980.78; thence North 89 degrees 49 minutes 13 seconds West 3,504.43 feet along the North boundary of said Operating Agreement No. 257 to a point having Coordinates of X = 2,071,550.00 and Y = 355,991.77; thence North 6,728.23 feet to the point of beginning, containing approximately **92 acres**, all as more particularly outlined on a plat on file in the Office of Mineral Resources, Department of Natural Resources. All bearings, distances and coordinates are based on Louisiana Coordinate System of 1927, (North or South Zone), where applicable.

NOTE: The above description of the Tract nominated for lease has been provided and corrected, where required, exclusively by the nomination party. Any mineral lease selected from this Tract and awarded by the Louisiana State Mineral Board shall be without warranty of any kind, either express, implied, or statutory, including, but not limited to, the implied warranties of merchantability and fitness for a particular purpose. Should the mineral lease awarded by the Louisiana State Mineral Board be subsequently modified, cancelled or abrogated due to the existence of conflicting leases, operating agreements, private claims or other future obligations or conditions which may affect all or any portion of the leased Tract, it shall not relieve the Lessee of the obligation to pay any bonus due thereon to the Louisiana State Mineral Board, nor shall the Louisiana State Mineral Board be obligated to refund any consideration paid by the Lessor prior to such modification, cancellation, or abrogation, including, but not limited to, bonuses, rentals and royalties.

NOTE: The State of Louisiana does hereby reserve, and this lease shall be subject to, the imprescriptible right of surface use in the nature of a servitude in favor of the Department of Natural Resources, including its Offices and Commissions, for the sole purpose of implementing, constructing, servicing and maintaining approved coastal zone management and/or restoration projects. Utilization of any and all rights derived under this lease by the mineral lessee, its agents, successors or assigns, shall not interfere with nor hinder the reasonable surface use by the Department of Natural Resources, its Offices or Commissions, as herein above reserved.

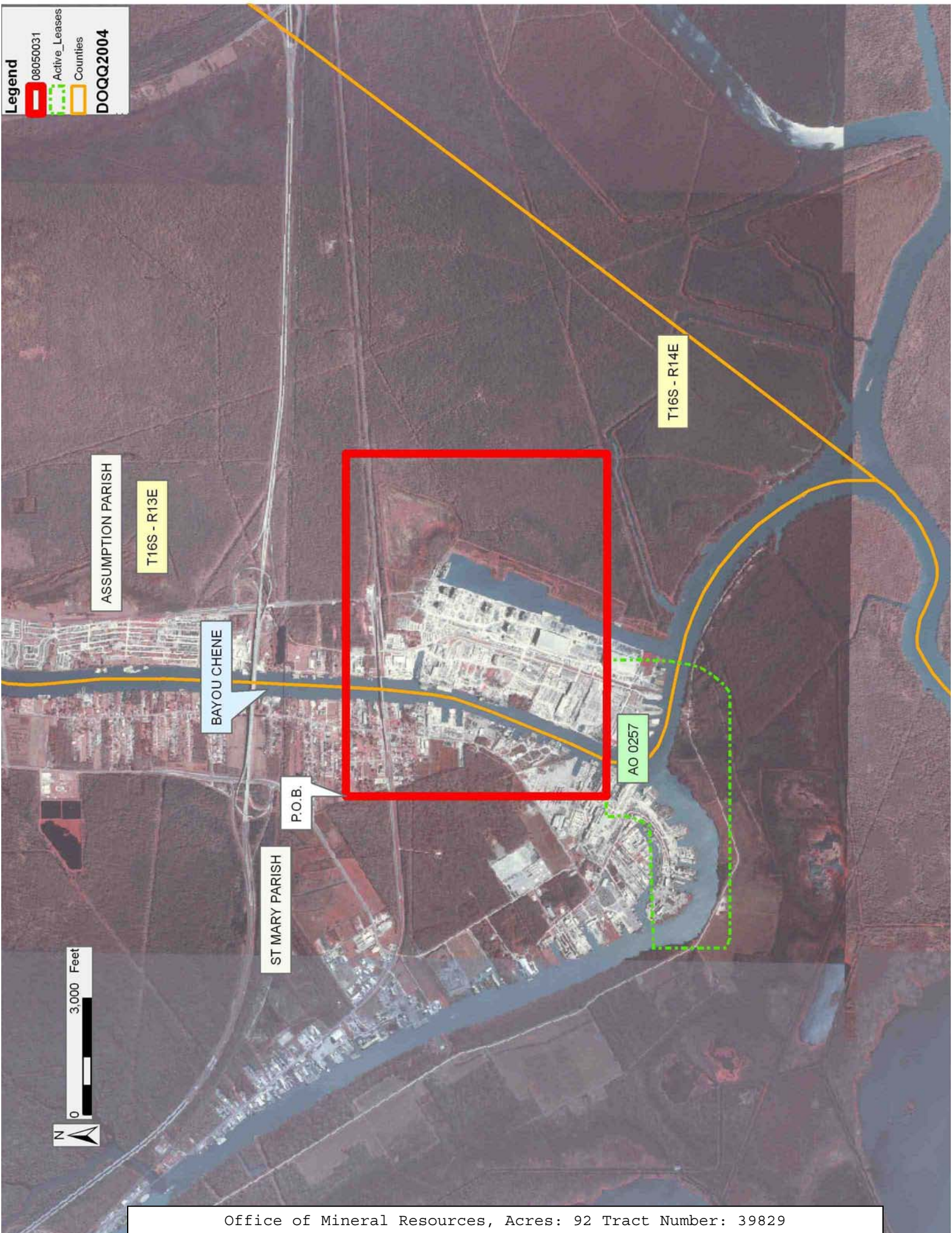
Applicant: BIG SKY ENERGY

Bidder	Cash Payment	Price/Acre	Rental	Oil	Gas	Other

Legend

- 08050031
- Active_Leases
- Counties

DOQQ2004



ASSUMPTION PARISH

T16S - R13E

BAYOU CHENE

P.O.B.

ST MARY PARISH

T16S - R14E

AO 0257



TRACT 39830 - Portion of Block 46, Breton Sound Area, Plaquemines Parish, Louisiana

All of the lands now or formerly constituting the beds and bottoms of all water bodies of every nature and description as to which title is vested in the State of Louisiana, together with all islands arising therein and other lands formed by accretion or by reliction, where allowed by law, excepting tax adjudicated lands, and not presently under mineral lease on May 14, 2008, situated in Plaquemines Parish, Louisiana, and more particularly described as follows: Beginning at a point on the East line of Block 46, Breton Sound Area, also being the Northernmost corner of State Lease No. 17689, as amended, having Coordinates of X = 2,679,600.00 and Y = 301,230.00; thence South 52 degrees 33 minutes 15 seconds West 4,038.24 feet along the Northern boundary of said State Lease No. 17689 to a point on the Northern boundary of State Lease No. 19079 having Coordinates of X = 2,676,393.93 and Y = 298,774.70; thence North 29 degrees 48 minutes 52 seconds West 717.47 feet along the Northern boundary of said State Lease No. 19079 to its Northernmost corner having Coordinates of X = 2,676,037.21 and Y = 299,397.20; thence North 33 degrees 14 minutes 29 seconds East 2,191.38 feet to a point having Coordinates of X = 2,677,238.45 and Y = 301,230.00; thence East 2,361.55 feet to the point of beginning, containing approximately **82.64 acres**, all as more particularly outlined on a plat on file in the Office of Mineral Resources, Department of Natural Resources. All bearings, distances and coordinates are based on Louisiana Coordinate System of 1927, (North or South Zone), where applicable.

NOTE: The above description of the Tract nominated for lease has been provided and corrected, where required, exclusively by the nomination party. Any mineral lease selected from this Tract and awarded by the Louisiana State Mineral Board shall be without warranty of any kind, either express, implied, or statutory, including, but not limited to, the implied warranties of merchantability and fitness for a particular purpose. Should the mineral lease awarded by the Louisiana State Mineral Board be subsequently modified, cancelled or abrogated due to the existence of conflicting leases, operating agreements, private claims or other future obligations or conditions which may affect all or any portion of the leased Tract, it shall not relieve the Lessee of the obligation to pay any bonus due thereon to the Louisiana State Mineral Board, nor shall the Louisiana State Mineral Board be obligated to refund any consideration paid by the Lessor prior to such modification, cancellation, or abrogation, including, but not limited to, bonuses, rentals and royalties.




NOTE: The State of Louisiana does hereby reserve, and this lease shall be subject to, the imprescriptible right of surface use in the nature of a servitude in favor of the Department of Natural Resources, including its Offices and Commissions, for the sole purpose of implementing, constructing, servicing and maintaining approved coastal zone management and/or restoration projects. Utilization of any and all rights derived under this lease by the mineral lessee, its agents, successors or assigns,

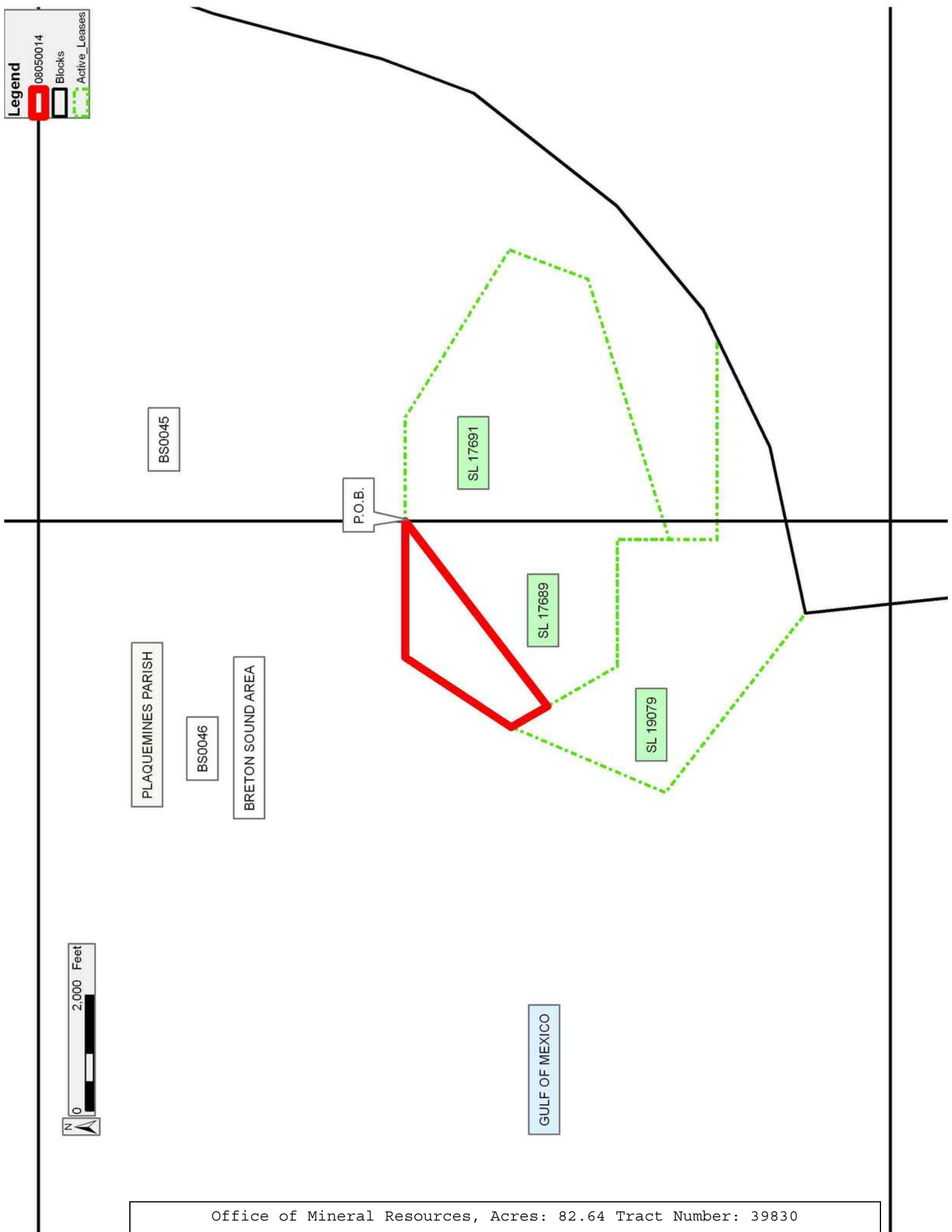
shall not interfere with nor hinder the reasonable surface use by the Department of Natural Resources, its Offices or Commissions, as herein above reserved.

Applicant: CENTURY EXPLORATION NEW ORLEANS, INC.

Bidder	Cash Payment	Price/Acre	Rental	Oil	Gas	Other

Legend

-  08050014
-  Blocks
-  Active_Leases



TRACT 39831 - Portion of Blocks 45, and 46, Breton Sound Area, Plaquemines Parish, Louisiana

All of the lands now or formerly constituting the beds and bottoms of all water bodies of every nature and description as to which title is vested in the State of Louisiana, together with all islands arising therein and other lands formed by accretion or by reliction, where allowed by law, excepting tax adjudicated lands, and not presently under mineral lease on May 14, 2008, situated in Plaquemines Parish, Louisiana, and more particularly described as follows: Beginning at a point on the line common to Blocks 45 and 46, Breton Sound Area, also being the Southeast corner of State Lease No. 17689, as amended, and also being the Southwest corner of State Lease No. 17691, as amended, having Coordinates of X = 2,679,600.00 and Y = 296,760.05; thence North 72 degrees 38 minutes 14 seconds East 4,393.87 feet along the Southern boundary of said State Lease No. 17691 to a point on the Western boundary of State Lease No. 19080 having Coordinates of X = 2,683,793.66 and Y = 298,071.28; thence South 20 degrees 26 minutes 18 seconds West 2,272.81 feet along the Western boundary of said State Lease No. 19080 to a point on the Louisiana Coastline, as decreed by the Supreme Court of the United States, as determined by a Special Master appointed therein, in litigation styled *United States v. State of Louisiana et al No. 9 Original*, in 1975, having Coordinates of X = 2,683,000.00 and Y = 295,941.54; thence Southwesterly on a straight line along said Louisiana Coastline to the Easternmost Northeast corner of State Lease No. 19079 having Coordinates of X = 2,682,768.97 and Y = 295,830.00; thence along the boundary of said State Lease No. 19079 the following courses: West 3,168.97 feet to a point on said line common to said Blocks 45 and 46, Breton Sound Area, having Coordinates of X = 2,679,600.00 and Y = 295,830.00; West 320.00 feet to a point having Coordinates of X = 2,679,280.00 and Y = 295,830.00 and North 830.00 feet to the Southernmost Southwest corner of said State Lease No. 17689 having Coordinates of X = 2,679,280.00 and Y = 296,660.00; thence North 72 degrees 38 minutes 14 seconds East 335.28 feet along the Southern boundary of said State Lease No. 17689 to the point of beginning, containing approximately **137.39 acres**, all as more particularly outlined on a plat on file in the Office of Mineral Resources, Department of Natural Resources. All bearings, distances and coordinates are based on Louisiana Coordinate System of 1927, (North or South Zone), where applicable.

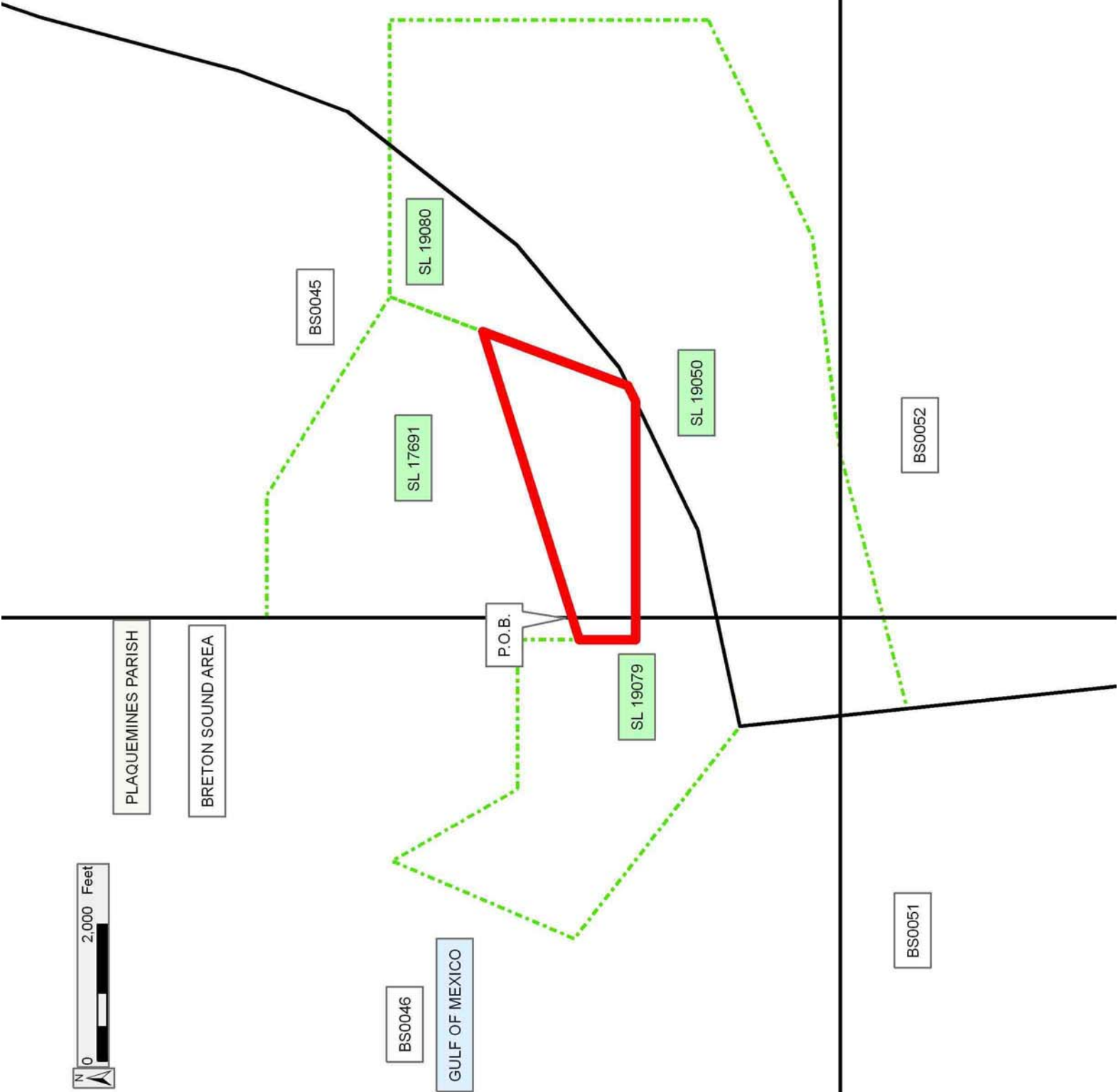
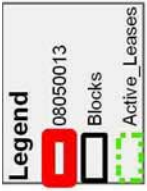
NOTE: The above description of the Tract nominated for lease has been provided and corrected, where required, exclusively by the nomination party. Any mineral lease selected from this Tract and awarded by the Louisiana State Mineral Board shall be without warranty of any kind, either express, implied, or statutory, including, but not limited to, the implied warranties of merchantability and fitness for a particular purpose. Should the mineral lease awarded by the Louisiana State Mineral Board be subsequently modified, cancelled or abrogated due to the existence of conflicting leases, operating agreements, private claims or other future obligations or conditions which may affect all or any portion

of the leased Tract, it shall not relieve the Lessee of the obligation to pay any bonus due thereon to the Louisiana State Mineral Board, nor shall the Louisiana State Mineral Board be obligated to refund any consideration paid by the Lessor prior to such modification, cancellation, or abrogation, including, but not limited to, bonuses, rentals and royalties.

NOTE: The State of Louisiana does hereby reserve, and this lease shall be subject to, the imprescriptible right of surface use in the nature of a servitude in favor of the Department of Natural Resources, including its Offices and Commissions, for the sole purpose of implementing, constructing, servicing and maintaining approved coastal zone management and/or restoration projects. Utilization of any and all rights derived under this lease by the mineral lessee, its agents, successors or assigns, shall not interfere with nor hinder the reasonable surface use by the Department of Natural Resources, its Offices or Commissions, as herein above reserved.

Applicant: CENTURY EXPLORATION NEW ORLEANS, INC.

Bidder	Cash Payment	Price/Acre	Rental	Oil	Gas	Other



TRACT 39832 - Plaquemines Parish, Louisiana

All of the lands now or formerly constituting the beds and bottoms of all water bodies of every nature and description as to which title is vested in the State of Louisiana, together with all islands arising therein and other lands formed by accretion or by reliction, where allowed by law, excepting tax adjudicated lands, and not presently under mineral lease on May 14, 2008, situated in Plaquemines Parish, Louisiana, and more particularly described as follows: Beginning at a point having Coordinates of X = 2,449,922.00 and Y = 273,516.33; thence South 89 degrees 18 minutes 08 seconds West 4,620.23 feet to a point having Coordinates of X = 2,445,302.11 and Y = 273,460.07, said point being the southeast corner of State Lease No. 3035, as amended; thence on and along the eastern and northern boundaries of said State Lease No. 3035, as amended, the following courses and distances, to wit: North 30 degrees 28 minutes 03 seconds East 301.60 feet to a point having Coordinates of X = 2,445,455.04 and Y = 273,720.02; North 20 degrees 28 minutes 03 seconds East 757.80 feet to a point having Coordinates of X = 2,445,720.02 and Y = 274,429.98; North 14 degrees 25 minutes 15 seconds East 361.40 feet to a point having Coordinates of X = 2,445,810.02 and Y = 274,780.00; North 08 degrees 30 minutes 16 seconds East 541.00 feet to a point having Coordinates of X = 2,445,890.03 and Y = 275,315.05; North 00 degrees 52 minutes 53 seconds East 325.00 feet to a point having Coordinates of X = 2,445,895.03 and Y = 275,640.01; North 11 degrees 01 minutes 46 seconds West 601.10 feet to a point having Coordinates of X = 2,445,780.03 and Y = 276,230.01; North 23 degrees 22 minutes 27 seconds West 642.80 feet to a point having Coordinates of X = 2,445,525.01 and Y = 276,820.05; North 29 degrees 58 minutes 54 seconds West 450.30 feet to a point having Coordinates of X = 2,445,299.99 and Y = 277,210.10; North 36 degrees 28 minutes 09 seconds West 429.00 feet to a point having Coordinates of X = 2,445,044.99 and Y = 277,555.09; North 46 degrees 50 minutes 51 seconds West 329.00 feet to a point having Coordinates of X = 2,444,804.98 and Y = 277,780.11; South 42 degrees 21 minutes 27 seconds West 690.20 feet to a point having Coordinates of X = 2,444,339.95 and Y = 277,270.08; North 44 degrees 39 minutes 25 seconds West 590.40 feet to a point having Coordinates of X = 2,443,924.98 and Y = 277,690.05; North 53 degrees 26 minutes 25 seconds West 554.00 feet to a point having Coordinates of X = 2,443,479.99 and Y = 278,020.04; North 63 degrees 26 minutes 06 seconds West 246.00 feet to a point having Coordinates of X = 2,443,259.96 and Y = 278,130.06; North 73 degrees 04 minutes 21 seconds West 480.80 feet to a point having Coordinates of X = 2,442,799.99 and Y = 278,270.05; and North 57 degrees 15 minutes 55 seconds West 33.55 feet to a point having Coordinates of X = 2,442,771.77 and Y = 278,288.19, said point being on the southern boundary of State Lease No. 18669; thence North 89 degrees 37 minutes 57 seconds East 5,328.34 feet on and along said southern boundary of said State Lease No. 18669 to a point having Coordinates of X = 2,448,100.00 and Y = 278,322.38, said point being the southeast corner of said State Lease No. 18669 and the southwest corner of State Lease No. 18668; thence South 89 degrees 48 minutes 43 seconds East 1,822.01 feet on and along the southern boundary of said State Lease No. 18668 to a point having Coordinates of X

= 2,449,922.00 and Y = 278,316.40; thence South 4,800.07 feet to the point of beginning, containing approximately **510.58 acres**, all as more particularly outlined on a plat on file in the Office of Mineral Resources, Department of Natural Resources. All bearings, distances and coordinates are based on Louisiana Coordinate System of 1927, (North or South Zone), where applicable.

NOTE: The above description of the Tract nominated for lease has been provided and corrected, where required, exclusively by the nomination party. Any mineral lease selected from this Tract and awarded by the Louisiana State Mineral Board shall be without warranty of any kind, either express, implied, or statutory, including, but not limited to, the implied warranties of merchantability and fitness for a particular purpose. Should the mineral lease awarded by the Louisiana State Mineral Board be subsequently modified, cancelled or abrogated due to the existence of conflicting leases, operating agreements, private claims or other future obligations or conditions which may affect all or any portion of the leased Tract, it shall not relieve the Lessee of the obligation to pay any bonus due thereon to the Louisiana State Mineral Board, nor shall the Louisiana State Mineral Board be obligated to refund any consideration paid by the Lessor prior to such modification, cancellation, or abrogation, including, but not limited to, bonuses, rentals and royalties.

NOTE: The State of Louisiana does hereby reserve, and this lease shall be subject to, the imprescriptible right of surface use in the nature of a servitude in favor of the Department of Natural Resources, including its Offices and Commissions, for the sole purpose of implementing, constructing, servicing and maintaining approved coastal zone management and/or restoration projects. Utilization of any and all rights derived under this lease by the mineral lessee, its agents, successors or assigns, shall not interfere with nor hinder the reasonable surface use by the Department of Natural Resources, its Offices or Commissions, as herein above reserved.

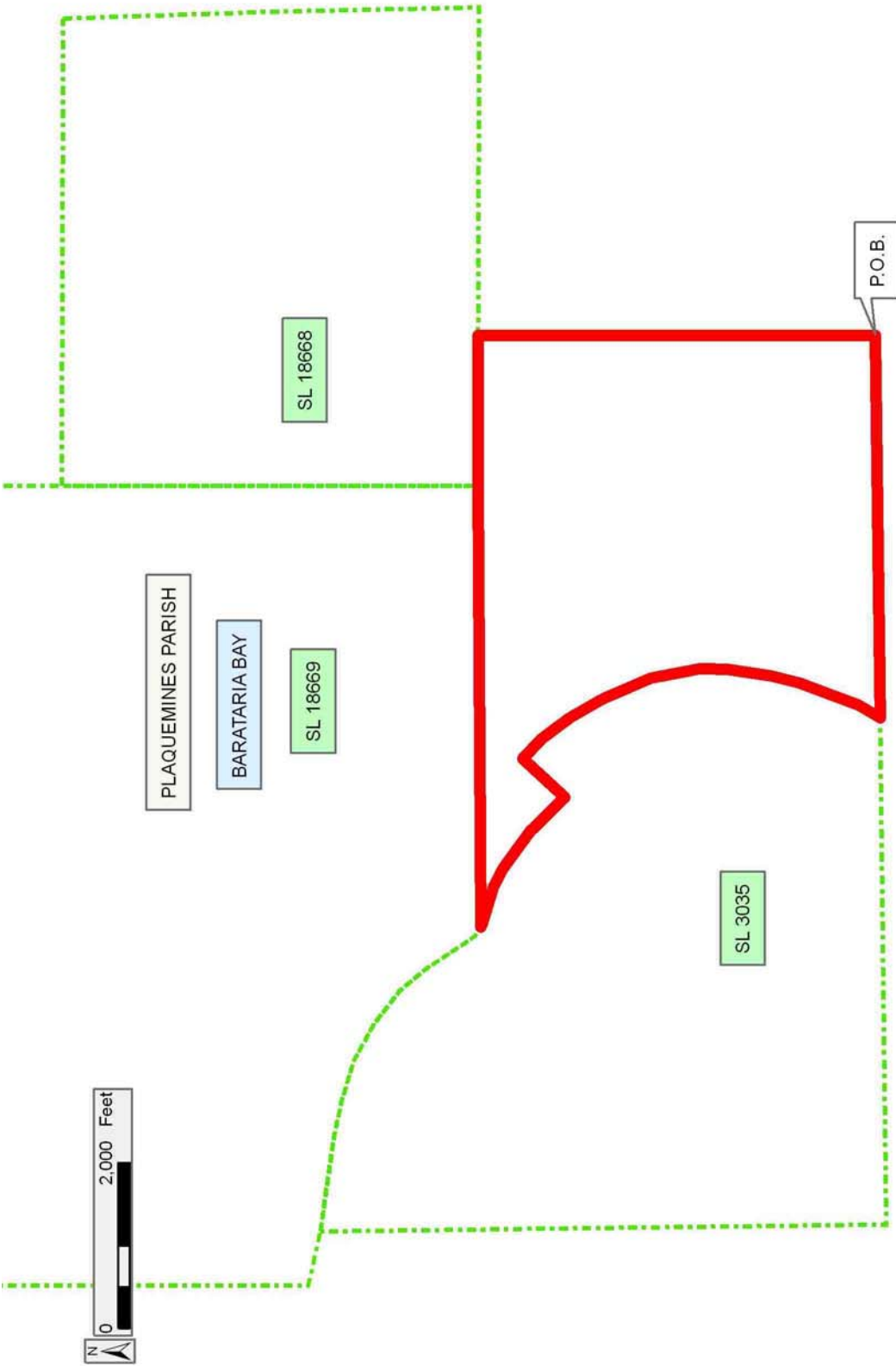
NOTE: The Department of Wildlife and Fisheries has designated certain areas in the coastal waters of the State of Louisiana as Oyster Seed Bed Areas. The exact location of those Seed Bed Areas must be obtained from the Department of Wildlife and Fisheries and any work done under a mineral lease from the State of Louisiana may necessarily be conducted in conformity with the rules and regulations promulgated by the said Department of Wildlife and Fisheries for Oyster Seed Bed Areas.

Applicant: ROBERT A. SCHROEDER, INC.

Bidder	Cash Payment	Price/Acre	Rental	Oil	Gas	Other

Legend

08050018
Active_Leases



TRACT 39833 - Plaquemines Parish, Louisiana

All of the lands now or formerly constituting the beds and bottoms of all water bodies of every nature and description as to which title is vested in the State of Louisiana, together with all islands arising therein and other lands formed by accretion or by reliction, where allowed by law, excepting tax adjudicated lands, and not presently under mineral lease on May 14, 2008, situated in Plaquemines Parish, Louisiana, and more particularly described as follows: Beginning at a point having Coordinates of X = 2,450,726.26 and Y = 278,313.76, said point being on the southern boundary of State of Louisiana State Lease No. 18668, said point also being the westernmost corner of State of Louisiana State Lease No. 18688; Thence South 72 degrees 21 minutes 20 seconds East 3,311.53 feet on and along the southern boundary of said State of Louisiana State Lease No. 18688 to a point having Coordinates of X = 2,453,882.00 and Y = 277,310.00; thence South 9,549.87 feet to a point having Coordinates of X = 2,453,882.00 and Y = 267,760.13; thence West 3,960.00 feet to a point having Coordinates of X = 2,449,922.00 and Y = 267,760.13; thence North 10,556.27 feet to a point having Coordinates of X = 2,449,922.00 and Y = 278,316.40, said point being on the southern boundary of said State of Louisiana State Lease No. 18668; thence South 89 degrees 48 minutes 43 seconds East 804.27 feet on and along said southern boundary of said State of Louisiana State Lease No. 18668 to the point of beginning, containing approximately **923.09 acres**, all as more particularly outlined on a plat on file in the Office of Mineral Resources, Department of Natural Resources. All bearings, distances and coordinates are based on Louisiana Coordinate System of 1927, (North or South Zone), where applicable.

NOTE: The above description of the Tract nominated for lease has been provided and corrected, where required, exclusively by the nomination party. Any mineral lease selected from this Tract and awarded by the Louisiana State Mineral Board shall be without warranty of any kind, either express, implied, or statutory, including, but not limited to, the implied warranties of merchantability and fitness for a particular purpose. Should the mineral lease awarded by the Louisiana State Mineral Board be subsequently modified, cancelled or abrogated due to the existence of conflicting leases, operating agreements, private claims or other future obligations or conditions which may affect all or any portion of the leased Tract, it shall not relieve the Lessee of the obligation to pay any bonus due thereon to the Louisiana State Mineral Board, nor shall the Louisiana State Mineral Board be obligated to refund any consideration paid by the Lessor prior to such modification, cancellation, or abrogation, including, but not limited to, bonuses, rentals and royalties.

NOTE: The State of Louisiana does hereby reserve, and this lease shall be subject to, the imprescriptible right of surface use in the nature of a servitude in favor of the Department of Natural Resources, including its Offices and Commissions, for the sole purpose of implementing, constructing, servicing and maintaining approved coastal zone management and/or restoration projects. Utilization of any and all rights derived

under this lease by the mineral lessee, its agents, successors or assigns, shall not interfere with nor hinder the reasonable surface use by the Department of Natural Resources, its Offices or Commissions, as herein above reserved.

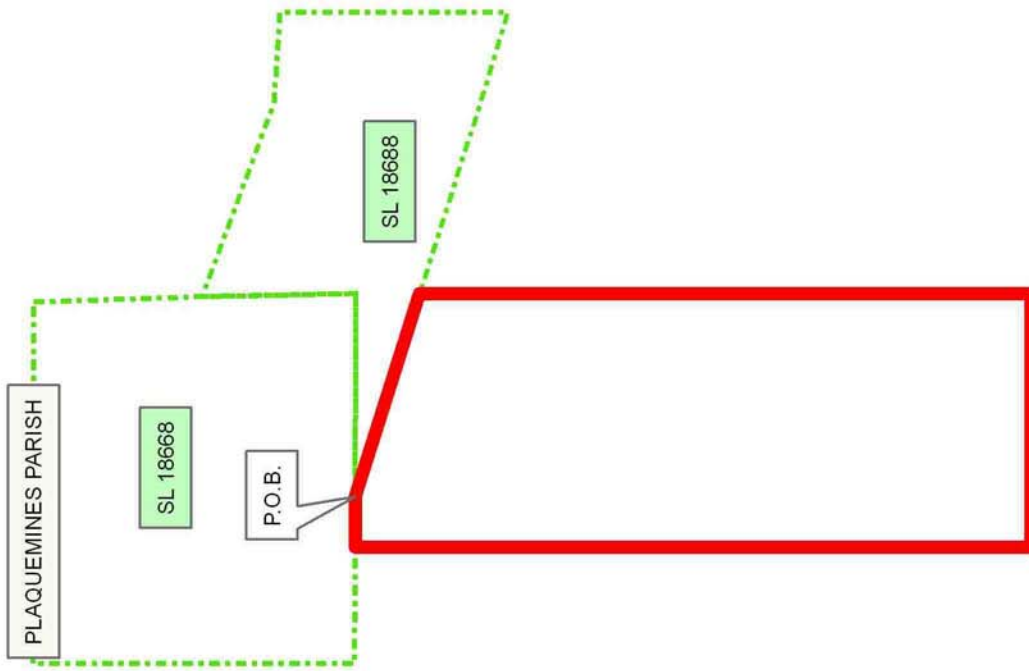
NOTE: The Department of Wildlife and Fisheries has designated certain areas in the coastal waters of the State of Louisiana as Oyster Seed Bed Areas. The exact location of those Seed Bed Areas must be obtained from the Department of Wildlife and Fisheries and any work done under a mineral lease from the State of Louisiana may necessarily be conducted in conformity with the rules and regulations promulgated by the said Department of Wildlife and Fisheries for Oyster Seed Bed Areas.

Applicant: ROBERT A. SCHROEDER, INC.

Bidder	Cash Payment	Price/Acre	Rental	Oil	Gas	Other

Legend

08050021
Active_Leases



BARATARIA BAY

TRACT 39834 - Jefferson and Plaquemines Parishes, Louisiana

All of the lands now or formerly constituting the beds and bottoms of all water bodies of every nature and description as to which title is vested in the State of Louisiana, together with all islands arising therein and other lands formed by accretion or by reliction, where allowed by law, excepting tax adjudicated lands, and not presently under mineral lease on May 14, 2008, situated in Jefferson and Plaquemines Parishes, Louisiana, and more particularly described as follows: Beginning at a point having Coordinates of X = 2,435,132.02 and Y = 274,839.40, said point being on the eastern boundary of State Lease No. 15631, as amended, said point also being the southwest corner of State Lease No. 14534, as amended; thence East 3,027.18 feet along the southern boundary of said State Lease No. 14534, as amended, to a point being the southeast corner of said State Lease No. 14534, as amended, also being a point on the western boundary of State Lease No. 14374 having Coordinates of X = 2,438,159.20 and Y = 274,839.40; thence on and along the western and southern boundaries of said State Lease No. 14374 the following courses and distances, to wit: South 00 degrees 38 minutes 43 seconds East 926.14 feet to a point being the southwest corner of said State Lease No. 14374 having Coordinates of X = 2,438,169.63 and Y = 273,913.32; and South 87 degrees 51 minutes 11 seconds East 1,007.65 feet to a point being the Southeast corner of said State Lease No. 14374, also being a point on the western boundary of State Lease No. 3035, as amended, having Coordinates of X = 2,439,176.57 and Y = 273,875.57; thence South 00 degrees 41 minutes 54 seconds East 489.89 feet along the western boundary of said State Lease No. 3035, as amended, to its Southwest corner having Coordinates of X = 2,439,182.55 and Y = 273,385.72; thence South 5,625.59 feet to a point having Coordinates of X = 2,439,182.55 and Y = 267,760.13; thence West 4,050.53 feet to a point having Coordinates of X = 2,435,132.02 and Y = 267,760.13; thence North 809.87 feet to a point being the southeast corner of State Lease No. 15744, as amended, having Coordinates of X = 2,435,132.02 and Y = 268,570.00; thence North 3,234.63 feet along the eastern boundary of said State Lease No. 15744, as amended, to a point being the northeast corner of said State Lease No. 15744, as amended, also being on the southeast corner of State Lease No. 15631, as amended, having Coordinates of X = 2,435,132.02 and Y = 271,804.63; thence North 3,034.77 feet along the eastern boundary of said State Lease No. 15631, as amended, to the point of beginning, containing approximately **636.16 acres**, all as more particularly outlined on a plat on file in the Office of Mineral Resources, Department of Natural Resources. All bearings, distances and coordinates are based on Louisiana Coordinate System of 1927, (North or South Zone), where applicable.

NOTE: The above description of the Tract nominated for lease has been provided and corrected, where required, exclusively by the nomination party. Any mineral lease selected from this Tract and awarded by the Louisiana State Mineral Board shall be without warranty of any kind, either express, implied, or statutory, including, but not limited to, the implied warranties of merchantability and fitness for a particular

purpose. Should the mineral lease awarded by the Louisiana State Mineral Board be subsequently modified, cancelled or abrogated due to the existence of conflicting leases, operating agreements, private claims or other future obligations or conditions which may affect all or any portion of the leased Tract, it shall not relieve the Lessee of the obligation to pay any bonus due thereon to the Louisiana State Mineral Board, nor shall the Louisiana State Mineral Board be obligated to refund any consideration paid by the Lessor prior to such modification, cancellation, or abrogation, including, but not limited to, bonuses, rentals and royalties.

NOTE: The State of Louisiana does hereby reserve, and this lease shall be subject to, the imprescriptible right of surface use in the nature of a servitude in favor of the Department of Natural Resources, including its Offices and Commissions, for the sole purpose of implementing, constructing, servicing and maintaining approved coastal zone management and/or restoration projects. Utilization of any and all rights derived under this lease by the mineral lessee, its agents, successors or assigns, shall not interfere with nor hinder the reasonable surface use by the Department of Natural Resources, its Offices or Commissions, as herein above reserved.

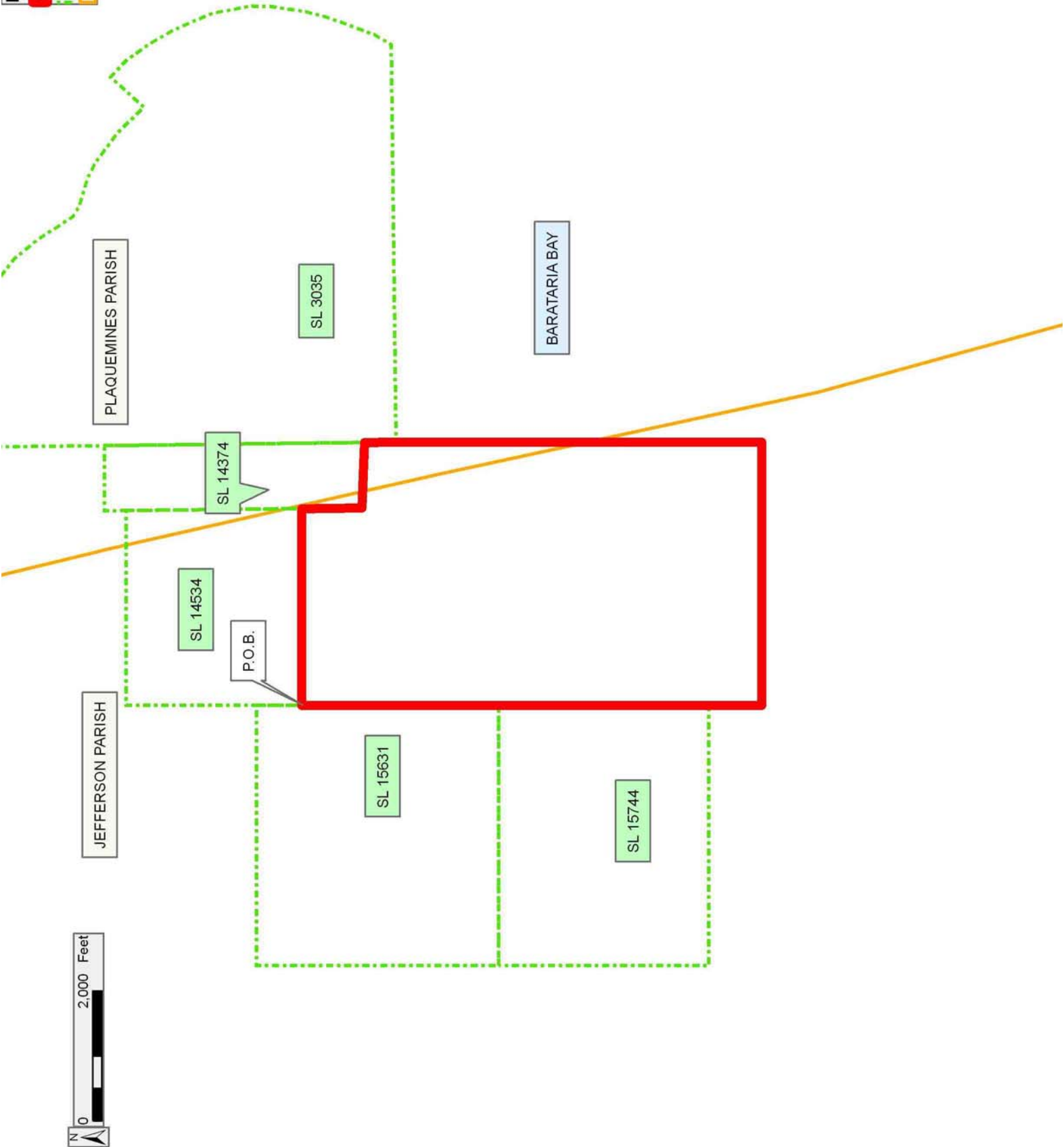
NOTE: The Department of Wildlife and Fisheries has designated certain areas in the coastal waters of the State of Louisiana as Oyster Seed Bed Areas. The exact location of those Seed Bed Areas must be obtained from the Department of Wildlife and Fisheries and any work done under a mineral lease from the State of Louisiana may necessarily be conducted in conformity with the rules and regulations promulgated by the said Department of Wildlife and Fisheries for Oyster Seed Bed Areas.

Applicant: ROBERT A. SCHROEDER, INC.

Bidder	Cash Payment	Price/Acre	Rental	Oil	Gas	Other

Legend

- 08050020
- Active_Leases
- Counties



TRACT 39835 - Plaquemines Parish, Louisiana

All of the lands now or formerly constituting the beds and bottoms of all water bodies of every nature and description as to which title is vested in the State of Louisiana, together with all islands arising therein and other lands formed by accretion or by reliction, where allowed by law, excepting tax adjudicated lands, and not presently under mineral lease on May 14, 2008, situated in Plaquemines Parish, Louisiana, and more particularly described as follows: Beginning at a point having Coordinates of X = 2,443,952.55 and Y = 267,760.13; thence North 5,683.54 feet to a point being on the southern boundary of State Lease No. 3035, as amended having Coordinates of X = 2,443,952.55 and Y = 273,443.67; thence North 89 degrees 18 minutes 14 seconds East 1,349.66 feet along the southern boundary of said State of Louisiana State Lease No. 3035, as amended, to its southeast corner having Coordinates of X = 2,445,302.11 and Y = 273,460.07; thence North 89 degrees 18 minutes 08 seconds East 4,620.23 feet to a point having Coordinates of X = 2,449,922.00 and Y = 273,516.33; thence South 5,756.20 feet to a point having Coordinates of X = 2,449,922.00 and Y = 267,760.13; thence West 5,969.45 feet to the point of beginning, containing approximately **783.85 acres**, all as more particularly outlined on a plat on file in the Office of Mineral Resources, Department of Natural Resources. All bearings, distances and coordinates are based on Louisiana Coordinate System of 1927, (North or South Zone), where applicable.

NOTE: The above description of the Tract nominated for lease has been provided and corrected, where required, exclusively by the nomination party. Any mineral lease selected from this Tract and awarded by the Louisiana State Mineral Board shall be without warranty of any kind, either express, implied, or statutory, including, but not limited to, the implied warranties of merchantability and fitness for a particular purpose. Should the mineral lease awarded by the Louisiana State Mineral Board be subsequently modified, cancelled or abrogated due to the existence of conflicting leases, operating agreements, private claims or other future obligations or conditions which may affect all or any portion of the leased Tract, it shall not relieve the Lessee of the obligation to pay any bonus due thereon to the Louisiana State Mineral Board, nor shall the Louisiana State Mineral Board be obligated to refund any consideration paid by the Lessor prior to such modification, cancellation, or abrogation, including, but not limited to, bonuses, rentals and royalties.

NOTE: The State of Louisiana does hereby reserve, and this lease shall be subject to, the imprescriptible right of surface use in the nature of a servitude in favor of the Department of Natural Resources, including its Offices and Commissions, for the sole purpose of implementing, constructing, servicing and maintaining approved coastal zone management and/or restoration projects. Utilization of any and all rights derived under this lease by the mineral lessee, its agents, successors or assigns, shall not interfere with nor hinder the reasonable surface use by the

Department of Natural Resources, its Offices or Commissions, as herein above reserved.

NOTE: The Department of Wildlife and Fisheries has designated certain areas in the coastal waters of the State of Louisiana as Oyster Seed Bed Areas. The exact location of those Seed Bed Areas must be obtained from the Department of Wildlife and Fisheries and any work done under a mineral lease from the State of Louisiana may necessarily be conducted in conformity with the rules and regulations promulgated by the said Department of Wildlife and Fisheries for Oyster Seed Bed Areas.

Applicant: ROBERT A. SCHROEDER, INC.

Bidder	Cash Payment	Price/Acre	Rental	Oil	Gas	Other

Legend

- 08050017
- Active_Leases

PLAQUEMINES PARISH

BARATARIA BAY

SL 3035

P.O.B.

