

TRACT 39816 - St. Martin Parish, Louisiana

All of the lands now or formerly constituting the beds and bottoms of all water bodies of every nature and description as to which title is vested in the State of Louisiana, together with all islands arising therein and other lands formed by accretion or by reliction, where allowed by law, excepting tax adjudicated lands, and not presently under mineral lease on May 14, 2008, situated in St. Martin Parish, Louisiana, and more particularly described as follows: Beginning at the Southwest corner of State Lease No. 19300 having Coordinates of X = 2,019,100.00 and Y = 410,600.00; thence East 6,200.00 feet along the South boundary of said State Lease No. 19300 to its Southeast corner and the Southwest corner of State Lease No. 19322 having Coordinates of X = 2,025,300.00 and Y = 410,600.00; thence East 4,173.87 feet along the South boundary of said State Lease No. 19322 to a point having Coordinates of X = 2,029,473.87 and Y = 410,600.00; thence South 11,351.61 feet to a point having Coordinates of X = 2,029,473.87 and Y = 399,248.39; thence West 15,845.87 feet to a point having Coordinates of X = 2,013,628.00 and Y = 399,248.39; thence Northerly approximately 5,968 feet to the Southeast corner of State Lease No. 711, as amended; thence Northerly approximately 2,580 feet along the East boundary of said State Lease No. 711 to a point located on the Southern boundary of Tract U 3 A located within Discorbis 1 Sand Unit; thence along the Southern, Southeastern, Eastern and Northern boundary of said Tract U 3 A the following courses and distances: Southeasterly, Northeasterly, Southeasterly, North 30 degrees 38 minutes 00 seconds East approximately 225 feet to a point having Coordinates of X = 2,014,399.94 and Y = 407,660.00, North 24 degrees 52 minutes 00 seconds East approximately 150 feet, Northwesterly and Westerly to a point on the East boundary of said State Lease No. 711; thence Northerly approximately 2,730 feet along the East boundary of said State Lease No. 711 to a point having a Coordinate of Y = 410,600.00; thence East approximately 5,491 feet to the point of beginning; **LESS AND EXCEPT** any portion of State Lease No. 711, as amended, and Former State Lease No. 2519/Proposed Operating Agreement with the State of Louisiana that may lie within the above described tract, containing approximately **1,581 acres**, all as more particularly outlined on a plat on file in the Office of Mineral Resources, Department of Natural Resources. All bearings, distances and coordinates are based on Louisiana Coordinate System of 1927, (North or South Zone), where applicable.

NOTE: The above description of the Tract nominated for lease has been provided and corrected, where required, exclusively by the nomination party. Any mineral lease selected from this Tract and awarded by the Louisiana State Mineral Board shall be without warranty of any kind, either express, implied, or statutory, including, but not limited to, the implied warranties of merchantability and fitness for a particular purpose. Should the mineral lease awarded by the Louisiana State Mineral Board be subsequently modified, cancelled or abrogated due to the existence of conflicting leases, operating agreements, private claims or other future obligations or conditions which may affect all or any portion of the leased Tract, it shall not relieve the Lessee of the obligation to

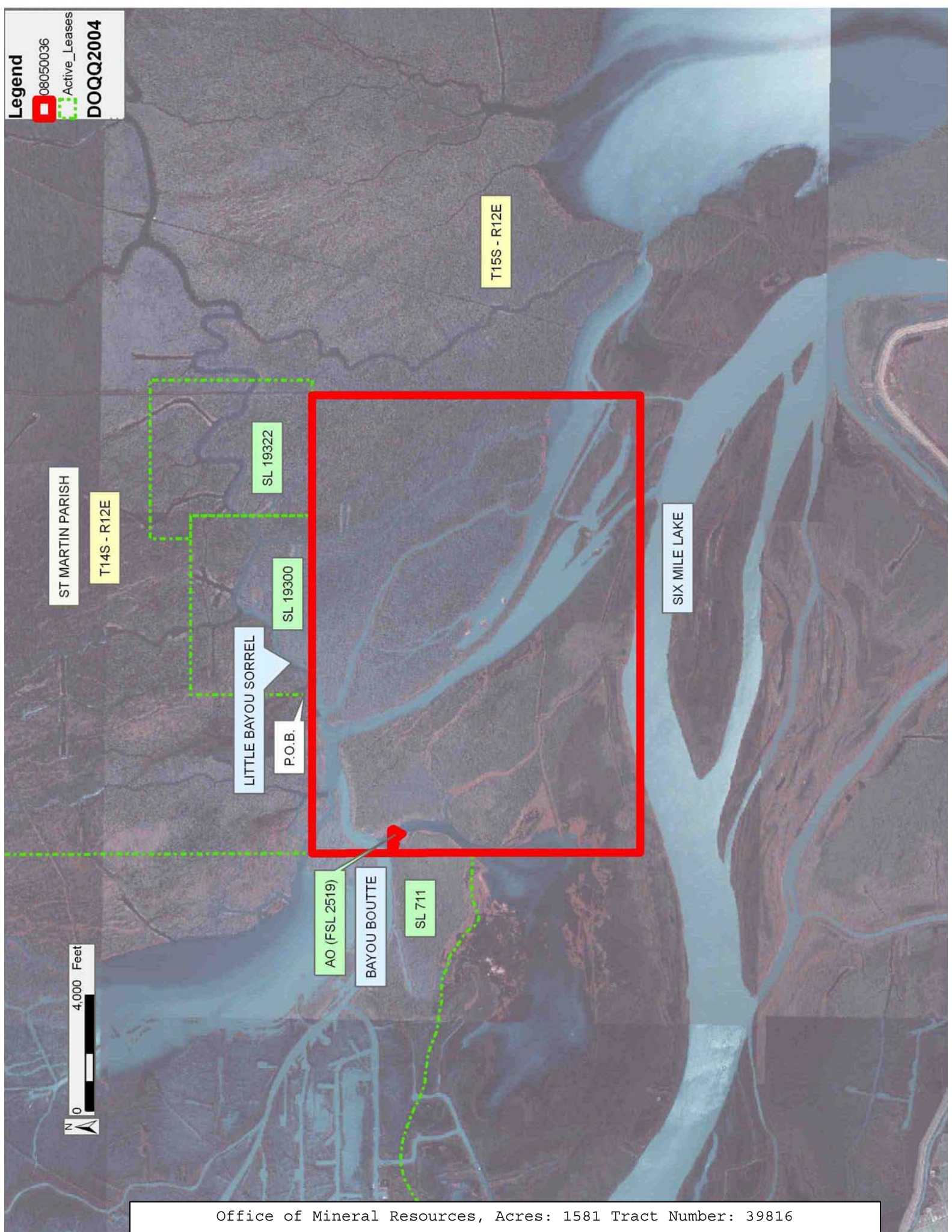
pay any bonus due thereon to the Louisiana State Mineral Board, nor shall the Louisiana State Mineral Board be obligated to refund any consideration paid by the Lessor prior to such modification, cancellation, or abrogation, including, but not limited to, bonuses, rentals and royalties.

NOTE: The State of Louisiana does hereby reserve, and this lease shall be subject to, the imprescriptible right of surface use in the nature of a servitude in favor of the Department of Natural Resources, including its Offices and Commissions, for the sole purpose of implementing, constructing, servicing and maintaining approved coastal zone management and/or restoration projects. Utilization of any and all rights derived under this lease by the mineral lessee, its agents, successors or assigns, shall not interfere with nor hinder the reasonable surface use by the Department of Natural Resources, its Offices or Commissions, as herein above reserved.

Applicant: THEOPHILUS OIL, GAS & LAND SERVICES, LLC

Bidder	Cash Payment	Price/Acre	Rental	Oil	Gas	Other

Legend
08050036
Active_Leases
DOQQ2004



TRACT 39817 - Assumption and St. Martin Parishes, Louisiana

All of the lands now or formerly constituting the beds and bottoms of all water bodies of every nature and description as to which title is vested in the State of Louisiana, together with all islands arising therein and other lands formed by accretion or by reliction, where allowed by law, excepting tax adjudicated lands, and not presently under mineral lease on May 14, 2008, situated in Assumption and St. Martin Parishes, Louisiana, and more particularly described as follows: Beginning at a point having Coordinates of X = 2,069,460.00 and Y = 407,463.00; thence East 15,745.24 feet to the Northwest corner of State Lease No. 19355 having Coordinates of X = 2,085,205.24 and Y = 407,463.00; thence South 7,563.00 feet along the West boundary of said State Lease No. 19355 to the Northeast corner of State Lease No. 18139 having Coordinates of X = 2,085,205.24 and Y = 399,900.00; thence West 4,901.88 feet along the North boundary of said State Lease No. 18139 to its Northwest corner, also being the Northeast corner of State Lease No. 19356 having Coordinates of X = 2,080,303.36 and Y = 399,900.00; thence West 3,620.00 feet along the North boundary of said State Lease No. 19356 to its Northwest corner having Coordinates of X = 2,076,683.36 and Y = 399,900.00; thence South 3,113.00 feet along the West boundary of said State Lease No. 19356 to a point having Coordinates of X = 2,076,683.36 and Y = 396,787.00; thence West 7,223.36 feet to a point having Coordinates of X = 2,069,460.00 and Y = 396,787.00; thence North 10,676.00 feet to the point of beginning, (This lease includes only waterbottoms claimed and owned by the state and specifically excludes any land which the state may claim or own and to which the mineral rights are vested in the state), containing approximately **1,040 acres**, all as more particularly outlined on a plat on file in the Office of Mineral Resources, Department of Natural Resources. All bearings, distances and coordinates are based on Louisiana Coordinate System of 1927, (North or South Zone), where applicable.

NOTE: The above description of the Tract nominated for lease has been provided and corrected, where required, exclusively by the nomination party. Any mineral lease selected from this Tract and awarded by the Louisiana State Mineral Board shall be without warranty of any kind, either express, implied, or statutory, including, but not limited to, the implied warranties of merchantability and fitness for a particular purpose. Should the mineral lease awarded by the Louisiana State Mineral Board be subsequently modified, cancelled or abrogated due to the existence of conflicting leases, operating agreements, private claims or other future obligations or conditions which may affect all or any portion of the leased Tract, it shall not relieve the Lessee of the obligation to pay any bonus due thereon to the Louisiana State Mineral Board, nor shall the Louisiana State Mineral Board be obligated to refund any consideration paid by the Lessor prior to such modification, cancellation, or abrogation, including, but not limited to, bonuses, rentals and royalties.

NOTE: The State of Louisiana does hereby reserve, and this lease shall be subject to, the imprescriptible right of surface use in the nature of a

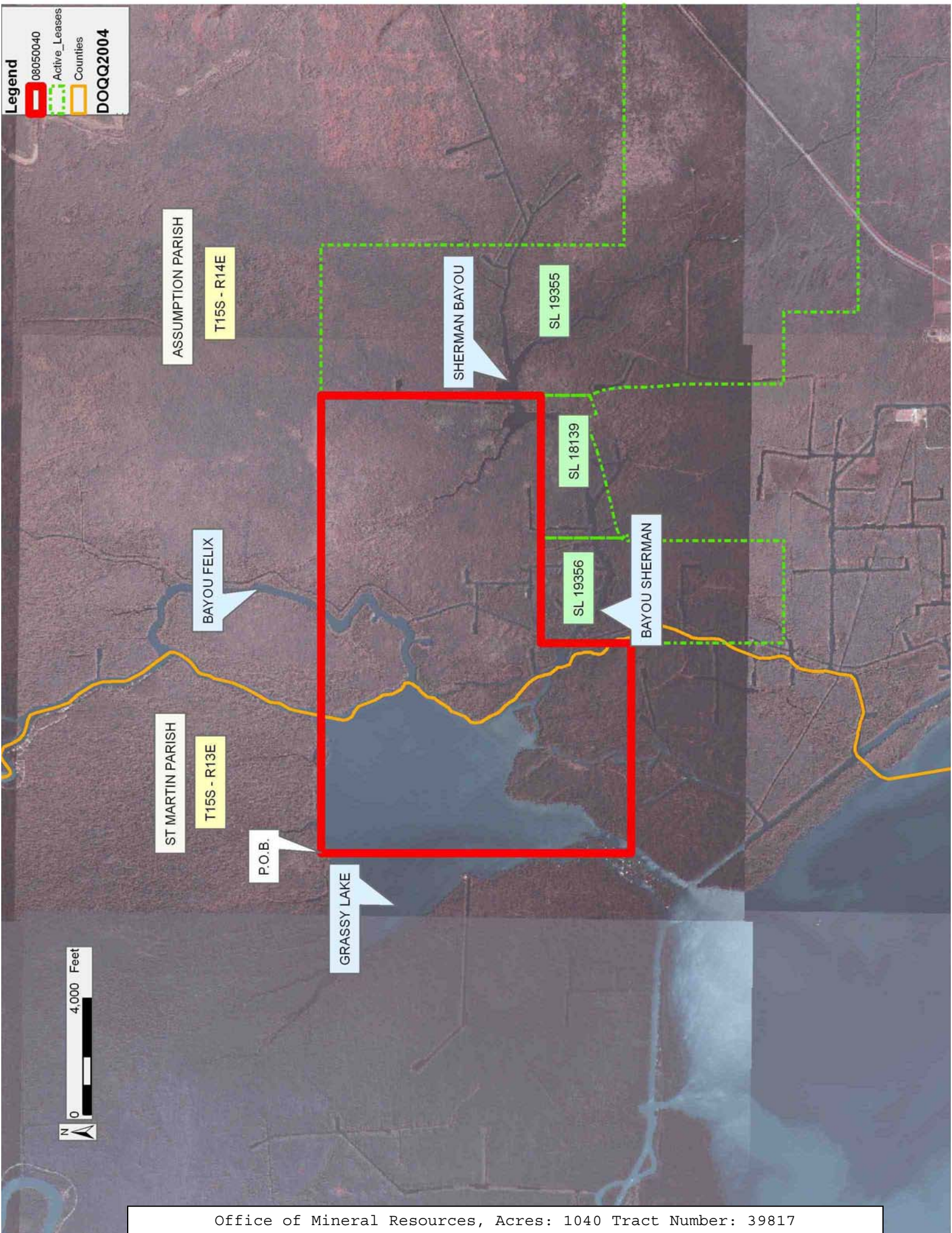
servitude in favor of the Department of Natural Resources, including its Offices and Commissions, for the sole purpose of implementing, constructing, servicing and maintaining approved coastal zone management and/or restoration projects. Utilization of any and all rights derived under this lease by the mineral lessee, its agents, successors or assigns, shall not interfere with nor hinder the reasonable surface use by the Department of Natural Resources, its Offices or Commissions, as herein above reserved.

Applicant: THEOPHILUS OIL, GAS & LAND SERVICES, LLC

Bidder	Cash Payment	Price/Acre	Rental	Oil	Gas	Other

Legend

- 08050040
- Active_Leases
- Counties
- DOQQ2004



ASSUMPTION PARISH

T15S - R14E

SHERMAN BAYOU

SL 19355

BAYOU FELIX

SL 18139

BAYOU SHERMAN

SL 19356

ST MARTIN PARISH

T15S - R13E

P.O.B.

GRASSY LAKE



TRACT 39818 - St. Martin Parish, Louisiana

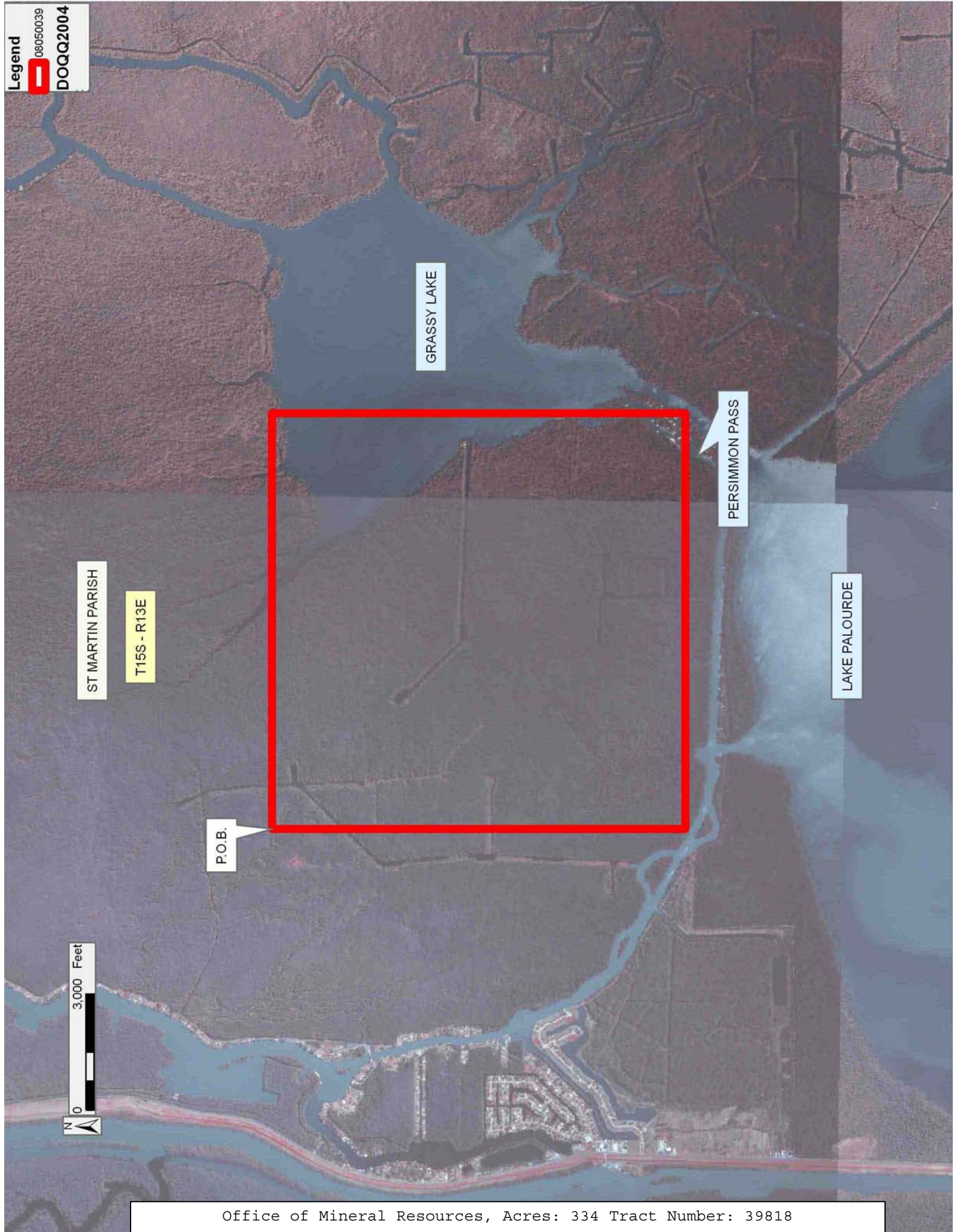
All of the lands now or formerly constituting the beds and bottoms of all water bodies of every nature and description as to which title is vested in the State of Louisiana, together with all islands arising therein and other lands formed by accretion or by reliction, where allowed by law, excepting tax adjudicated lands, and not presently under mineral lease on May 14, 2008, situated in St. Martin Parish, Louisiana, and more particularly described as follows: Beginning at a point having Coordinates of X = 2,058,713.00 and Y = 407,463.00; thence East 10,747.00 feet to a point having Coordinates of X = 2,069,460.00 and Y = 407,463.00; thence South 10,676.00 feet to a point having Coordinates of X = 2,069,460.00 and Y = 396,787.00; thence West 10,747.00 feet to a point having Coordinates of X = 2,058,713.00 and Y = 396,787.00; thence North 10,676.00 feet to the point of beginning, (This lease includes only waterbottoms claimed and owned by the state and specifically excludes any land which the state may claim or own and to which the mineral rights are vested in the state), containing approximately **334 acres**, all as more particularly outlined on a plat on file in the Office of Mineral Resources, Department of Natural Resources. All bearings, distances and coordinates are based on Louisiana Coordinate System of 1927, (North or South Zone), where applicable.

NOTE: The above description of the Tract nominated for lease has been provided and corrected, where required, exclusively by the nomination party. Any mineral lease selected from this Tract and awarded by the Louisiana State Mineral Board shall be without warranty of any kind, either express, implied, or statutory, including, but not limited to, the implied warranties of merchantability and fitness for a particular purpose. Should the mineral lease awarded by the Louisiana State Mineral Board be subsequently modified, cancelled or abrogated due to the existence of conflicting leases, operating agreements, private claims or other future obligations or conditions which may affect all or any portion of the leased Tract, it shall not relieve the Lessee of the obligation to pay any bonus due thereon to the Louisiana State Mineral Board, nor shall the Louisiana State Mineral Board be obligated to refund any consideration paid by the Lessor prior to such modification, cancellation, or abrogation, including, but not limited to, bonuses, rentals and royalties.

Bidder	Cash Payment	Price/Acre	Rental	Oil	Gas	Other

Applicant: THEOPHILUS OIL, GAS & LAND SERVICES, LLC

Legend
08050039
DOQQ2004



GRASSY LAKE

ST MARTIN PARISH

T15S - R13E

PERSIMMON PASS

LAKE PALOURDE

P.O.B.



TRACT 39819 - St. Martin and St. Mary Parishes, Louisiana

All of the lands now or formerly constituting the beds and bottoms of all water bodies of every nature and description as to which title is vested in the State of Louisiana, together with all islands arising therein and other lands formed by accretion or by reliction, where allowed by law, excepting tax adjudicated lands, and not presently under mineral lease on May 14, 2008, situated in St. Martin and St. Mary Parishes, Louisiana, and more particularly described as follows: Beginning at a point having Coordinates of X = 2,029,473.87 and Y = 399,248.39; thence East 18,480.00 feet to a point having Coordinates of X = 2,047,953.87 and Y = 399,248.39; thence South 7,100.00 feet to a point having Coordinates of X = 2,047,953.87 and Y = 392,148.39; thence West 18,480.00 feet to a point having Coordinates of X = 2,029,473.87 and Y = 392,148.39; thence North 7,100.00 feet to the point of beginning, containing approximately **2,474 acres**, all as more particularly outlined on a plat on file in the Office of Mineral Resources, Department of Natural Resources. All bearings, distances and coordinates are based on Louisiana Coordinate System of 1927, (North or South Zone), where applicable.

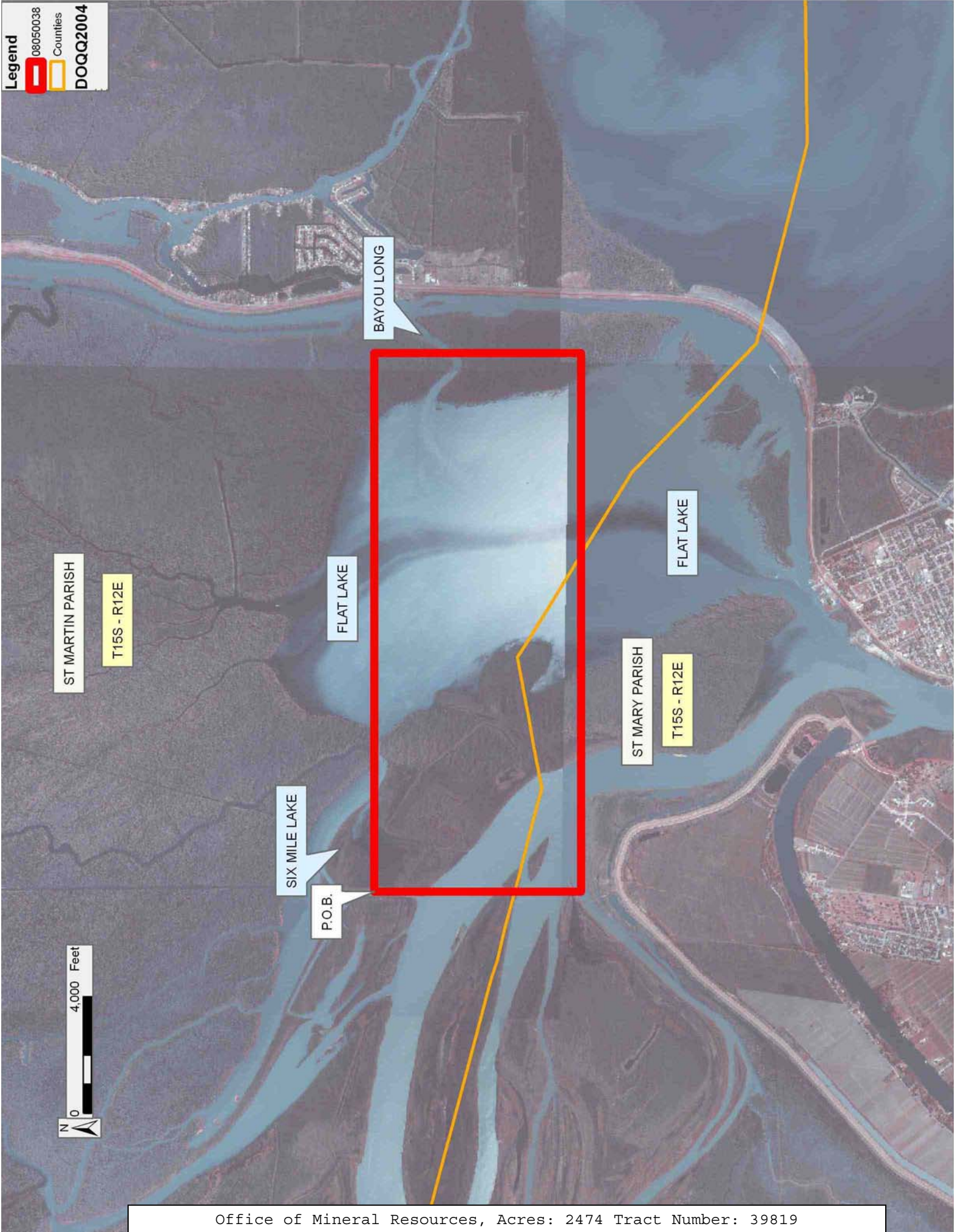
NOTE: The above description of the Tract nominated for lease has been provided and corrected, where required, exclusively by the nomination party. Any mineral lease selected from this Tract and awarded by the Louisiana State Mineral Board shall be without warranty of any kind, either express, implied, or statutory, including, but not limited to, the implied warranties of merchantability and fitness for a particular purpose. Should the mineral lease awarded by the Louisiana State Mineral Board be subsequently modified, cancelled or abrogated due to the existence of conflicting leases, operating agreements, private claims or other future obligations or conditions which may affect all or any portion of the leased Tract, it shall not relieve the Lessee of the obligation to pay any bonus due thereon to the Louisiana State Mineral Board, nor shall the Louisiana State Mineral Board be obligated to refund any consideration paid by the Lessor prior to such modification, cancellation, or abrogation, including, but not limited to, bonuses, rentals and royalties.

NOTE: The State of Louisiana does hereby reserve, and this lease shall be subject to, the imprescriptible right of surface use in the nature of a servitude in favor of the Department of Natural Resources, including its Offices and Commissions, for the sole purpose of implementing, constructing, servicing and maintaining approved coastal zone management and/or restoration projects. Utilization of any and all rights derived under this lease by the mineral lessee, its agents, successors or assigns, shall not interfere with nor hinder the reasonable surface use by the Department of Natural Resources, its Offices or Commissions, as herein above reserved.

Applicant: THEOPHILUS OIL, GAS & LAND SERVICES, LLC

Bidder	Cash Payment	Price/Acre	Rental	Oil	Gas	Other

Legend
08050038
Counties
DOQQ2004



TRACT 39820 - St. Martin and St. Mary Parishes, Louisiana

All of the lands now or formerly constituting the beds and bottoms of all water bodies of every nature and description as to which title is vested in the State of Louisiana, together with all islands arising therein and other lands formed by accretion or by reliction, where allowed by law, excepting tax adjudicated lands, and not presently under mineral lease on May 14, 2008, situated in St. Martin and St. Mary Parishes, Louisiana, and more particularly described as follows: Beginning at a point having Coordinates of X = 2,013,628.00 and Y = 399,248.39; thence East 15,845.87 feet to a point having Coordinates of X = 2,029,473.87 and Y = 399,248.39; thence South 7,100.00 feet to a point having Coordinates of X = 2,029,473.87 and Y = 392,148.39; thence West 15,845.87 feet to a point having Coordinates of X = 2,013,628.00 and Y = 392,148.39; thence North 7,100.00 feet to the point of beginning, containing approximately **2,400 acres**, all as more particularly outlined on a plat on file in the Office of Mineral Resources, Department of Natural Resources. All bearings, distances and coordinates are based on Louisiana Coordinate System of 1927, (North or South Zone), where applicable.

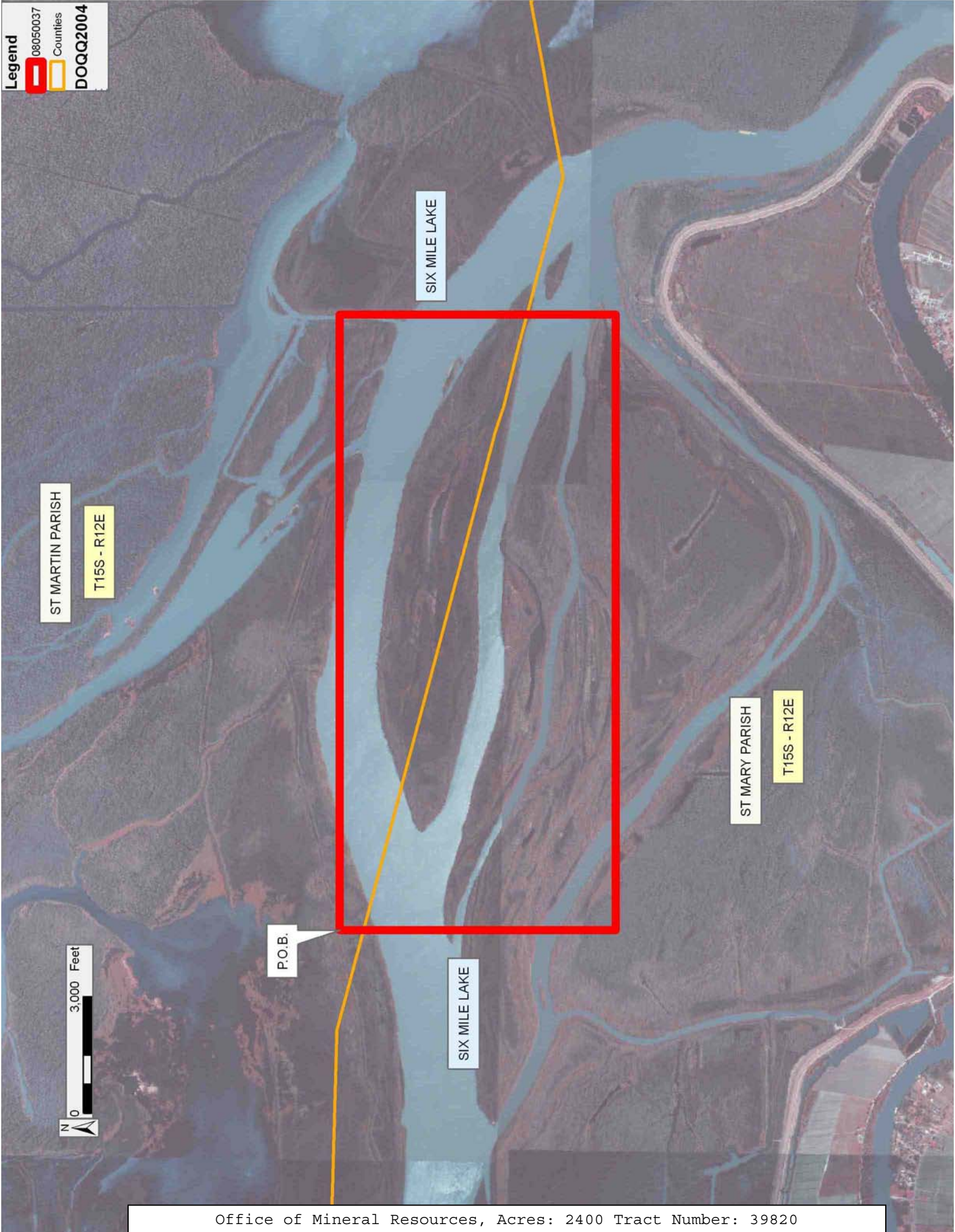
NOTE: The above description of the Tract nominated for lease has been provided and corrected, where required, exclusively by the nomination party. Any mineral lease selected from this Tract and awarded by the Louisiana State Mineral Board shall be without warranty of any kind, either express, implied, or statutory, including, but not limited to, the implied warranties of merchantability and fitness for a particular purpose. Should the mineral lease awarded by the Louisiana State Mineral Board be subsequently modified, cancelled or abrogated due to the existence of conflicting leases, operating agreements, private claims or other future obligations or conditions which may affect all or any portion of the leased Tract, it shall not relieve the Lessee of the obligation to pay any bonus due thereon to the Louisiana State Mineral Board, nor shall the Louisiana State Mineral Board be obligated to refund any consideration paid by the Lessor prior to such modification, cancellation, or abrogation, including, but not limited to, bonuses, rentals and royalties.

NOTE: The State of Louisiana does hereby reserve, and this lease shall be subject to, the imprescriptible right of surface use in the nature of a servitude in favor of the Department of Natural Resources, including its Offices and Commissions, for the sole purpose of implementing, constructing, servicing and maintaining approved coastal zone management and/or restoration projects. Utilization of any and all rights derived under this lease by the mineral lessee, its agents, successors or assigns, shall not interfere with nor hinder the reasonable surface use by the Department of Natural Resources, its Offices or Commissions, as herein above reserved.

Applicant: THEOPHILUS OIL, GAS & LAND SERVICES, LLC

Bidder	Cash Payment	Price/Acre	Rental	Oil	Gas	Other

Legend
08050037
Counties
DOQQ2004



TRACT 39821 - Assumption St. Martin and St. Mary Parishes, Louisiana

All of the lands now or formerly constituting the beds and bottoms of all water bodies of every nature and description as to which title is vested in the State of Louisiana, together with all islands arising therein and other lands formed by accretion or by reliction, where allowed by law, excepting tax adjudicated lands, and not presently under mineral lease on May 14, 2008, situated in Assumption St. Martin and St. Mary Parishes, Louisiana, and more particularly described as follows: Beginning at a point having Coordinates of X = 2,064,134.00 and Y = 396,787.00; thence East 12,549.36 feet to a point on the West boundary of State Lease No. 19356 having Coordinates of X = 2,076,683.36 and Y = 396,787.00; thence along the West and South boundary of said State Lease No. 19356 the following courses and distances: South 5,242.00 feet to a corner having Coordinates of X = 2,076,683.36 and Y = 391,545.00 and East 3,516.64 feet to its Southeast corner having Coordinates of X = 2,080,200.00 and Y = 391,545.00; thence South 03 degrees 34 minutes 48 seconds West 4,804.38 feet to the Northwest corner of State Lease No. 19357 having Coordinates of X = 2,079,900.00 and Y = 386,750.00; thence South 6,000.00 feet along the West boundary of said State Lease No. 19357 to its Southwest corner having Coordinates of X = 2,079,900.00 and Y = 380,750.00; thence West 15,766.00 feet to a point having Coordinates of X = 2,064,134.00 and Y = 380,750.00; thence North 7,328.76 feet to a point on the South boundary of State Lease No. 19020, as amended, having Coordinates of X = 2,064,134.00 and Y = 388,078.76; thence along the Southern, Eastern and Northern boundary of said State Lease No. 19020 the following courses and distances: North 82 degrees 15 minutes 11 seconds East 611.58 feet to a corner having Coordinates of X = 2,064,740.00 and Y = 388,161.20, South 47.20 feet to a corner having Coordinates of X = 2,064,740.00 and Y = 388,114.00, East 3,550.00 feet to a corner having Coordinates of X = 2,068,290.00 and Y = 388,114.00, North 38 degrees 17 minutes 30 seconds East 1,483.06 feet to a corner having Coordinates of X = 2,069,209.00 and Y = 389,278.00, North 60 degrees 20 minutes 10 seconds East 2,357.56 feet to a corner having Coordinates of X = 2,071,257.59 and Y = 390,444.78; North 666.45 feet to a corner having Coordinates of X = 2,071,257.59 and Y = 391,111.22, North 26 degrees 05 minutes 47 seconds West 3,695.51 feet to a corner having Coordinates of X = 2,069,632.00 and Y = 394,430.00 and West 5,498.00 feet to a point having Coordinates of X = 2,064,134.00 and Y = 394,430.00; thence North 2,357.00 feet to the point of beginning, (This lease includes only waterbottoms claimed and owned by the state and specifically excludes any land which the state may claim or own and to which the mineral rights are vested in the state), containing approximately **1,975 acres**, all as more particularly outlined on a plat on file in the Office of Mineral Resources, Department of Natural Resources. All bearings, distances and coordinates are based on Louisiana Coordinate System of 1927, (North or South Zone), where applicable.

NOTE: The above description of the Tract nominated for lease has been provided and corrected, where required, exclusively by the nomination party. Any mineral lease selected from this Tract and awarded by the

Louisiana State Mineral Board shall be without warranty of any kind, either express, implied, or statutory, including, but not limited to, the implied warranties of merchantability and fitness for a particular purpose. Should the mineral lease awarded by the Louisiana State Mineral Board be subsequently modified, cancelled or abrogated due to the existence of conflicting leases, operating agreements, private claims or other future obligations or conditions which may affect all or any portion of the leased Tract, it shall not relieve the Lessee of the obligation to pay any bonus due thereon to the Louisiana State Mineral Board, nor shall the Louisiana State Mineral Board be obligated to refund any consideration paid by the Lessor prior to such modification, cancellation, or abrogation, including, but not limited to, bonuses, rentals and royalties.

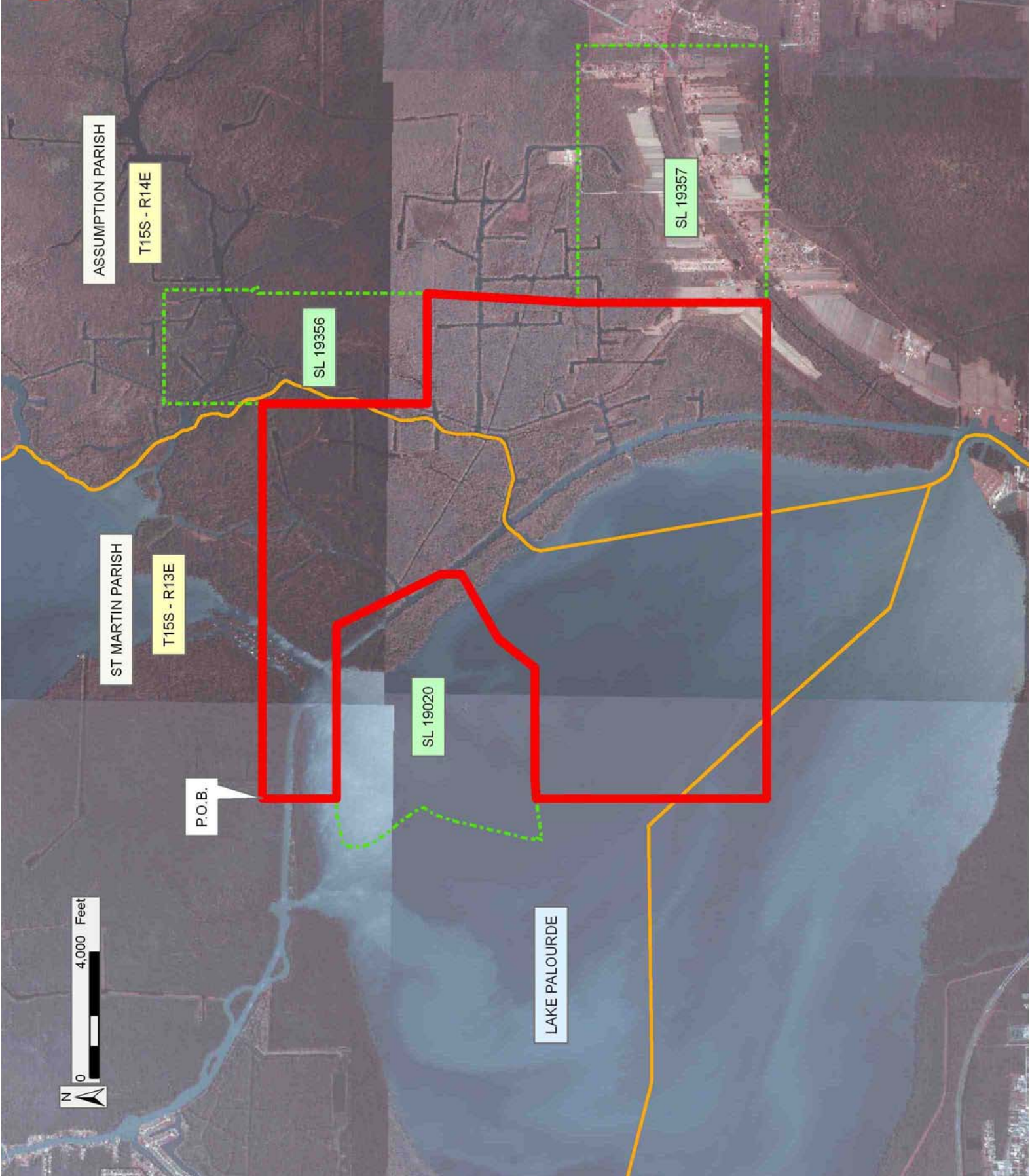
NOTE: The State of Louisiana does hereby reserve, and this lease shall be subject to, the imprescriptible right of surface use in the nature of a servitude in favor of the Department of Natural Resources, including its Offices and Commissions, for the sole purpose of implementing, constructing, servicing and maintaining approved coastal zone management and/or restoration projects. Utilization of any and all rights derived under this lease by the mineral lessee, its agents, successors or assigns, shall not interfere with nor hinder the reasonable surface use by the Department of Natural Resources, its Offices or Commissions, as herein above reserved.

Applicant: THEOPHILUS OIL, GAS & LAND SERVICES, LLC

Bidder	Cash Payment	Price/Acre	Rental	Oil	Gas	Other

Legend

- 08050041
- Active_Leases
- Counties
- DOQQ2004



TRACT 39822 - St. Martin Parish, Louisiana

All of the lands now or formerly constituting the beds and bottoms of all water bodies of every nature and description as to which title is vested in the State of Louisiana, together with all islands arising therein and other lands formed by accretion or by reliction, where allowed by law, excepting tax adjudicated lands, and not presently under mineral lease on May 14, 2008, situated in St. Martin Parish, Louisiana, and more particularly described as follows: Beginning at a point having Coordinates of X = 2,047,953.87 and Y = 396,787.00; thence East 16,180.13 feet to a point having Coordinates of X = 2,064,134.00 and Y = 396,787.00; thence South 2,357.00 feet to a point on the Northern boundary of State Lease No. 19020 having Coordinates of X = 2,064,134.00 and Y = 394,430.00; thence along the boundaries of said State Lease No. 19020 the following courses and distances: West 221.27 feet to a corner having Coordinates of X = 2,063,912.73 and Y = 394,430.00, North 87 degrees 38 minutes 27 seconds West 242.94 feet to a corner having Coordinates of X = 2,063,670.00 and Y = 394,440.00, South 76 degrees 45 minutes 34 seconds West 1,047.86 feet to a corner having Coordinates of X = 2,062,650.00 and Y = 394,200.00, South 12 degrees 12 minutes 02 seconds West 189.28 feet to a corner having Coordinates of X = 2,062,610.00 and Y = 394,015.00, South 06 degrees 54 minutes 40 seconds West 166.21 feet to a corner having Coordinates of X = 2,062,590.00 and Y = 393,850.00, South 06 degrees 00 minutes 32 seconds East 191.05 feet to a corner having Coordinates of X = 2,062,610.00 and Y = 393,660.00, South 10 degrees 47 minutes 04 seconds East 213.78 feet to a corner having Coordinates of X = 2,062,650.00 and Y = 393,450.00, South 22 degrees 42 minutes 52 seconds East 233.08 feet to a corner having Coordinates of X = 2,062,740.00 and Y = 393,235.00, South 34 degrees 21 minutes 16 seconds East 478.46 feet to a corner having Coordinates of X = 2,063,010.00 and Y = 392,840.00, South 41 degrees 31 minutes 54 seconds East 467.55 feet to a corner having Coordinates of X = 2,063,320.00 and Y = 392,490.00, South 35 degrees 57 minutes 38 seconds East 630.08 feet to a corner having Coordinates of X = 2,063,690.00 and Y = 391,980.00, South 31 degrees 45 minutes 34 seconds East 246.98 feet to a corner having Coordinates of X = 2,063,820.00 and Y = 391,770.00, South 11 degrees 18 minutes 36 seconds East 123.75 feet to a corner having Coordinates of X = 2,063,844.27 and Y = 391,648.65, South 36 degrees 23 minutes 04 seconds West 209.49 feet to a point having Coordinates of X = 2,063,720.00 and Y = 391,480.00, South 25 degrees 01 minutes 01 seconds West 331.06 feet to a corner having Coordinates of X = 2,063,580.00 and Y = 391,180.00, South 18 degrees 48 minutes 00 seconds West 496.49 feet to a corner having Coordinates of X = 2,063,420.00 and Y = 390,710.00, South 13 degrees 09 minutes 57 seconds West 1,756.16 feet to a corner having Coordinates of X = 2,063,020.00 and Y = 389,000.00, South 14 degrees 34 minutes 27 seconds West 516.62 feet to a corner having Coordinates of X = 2,062,890.00 and Y = 388,500.00, South 08 degrees 21 minutes 57 seconds West 343.66 feet to a corner having Coordinates of X = 2,062,840.00 and Y = 388,160.00, North 82 degrees 06 minutes 27 seconds East 66.85 feet to a corner having Coordinates of X = 2,062,906.22 and Y = 388,169.18, South 17 degrees 45 minutes 38 seconds West 282.65 feet to a corner having Coordinates of X =

2,062,820.00 and Y = 387,900.00 and North 82 degrees 15 minutes 11 seconds East 1,326.10 feet to a point having Coordinates of X = 2,064,134.00 and Y = 388,078.76; thence South 840.36 feet to a point having Coordinates of X = 2,064,134.00 and Y = 387,238.40; thence West 15,922.95 feet to the Northeast corner of State Lease No. 19469 having Coordinates of X = 2,048,211.05 and Y = 387,238.40; thence West 257.18 feet along the North boundary of said State Lease No. 19469 to a point having Coordinates of X = 2,047,953.87 and Y = 387,238.40; thence North 9,548.60 feet to the point of beginning, (This lease includes only waterbottoms claimed and owned by the state and specifically excludes any land which the state may claim or own and to which the mineral rights are vested in the state), containing approximately **1,785 acres**, all as more particularly outlined on a plat on file in the Office of Mineral Resources, Department of Natural Resources. All bearings, distances and coordinates are based on Louisiana Coordinate System of 1927, (North or South Zone), where applicable.

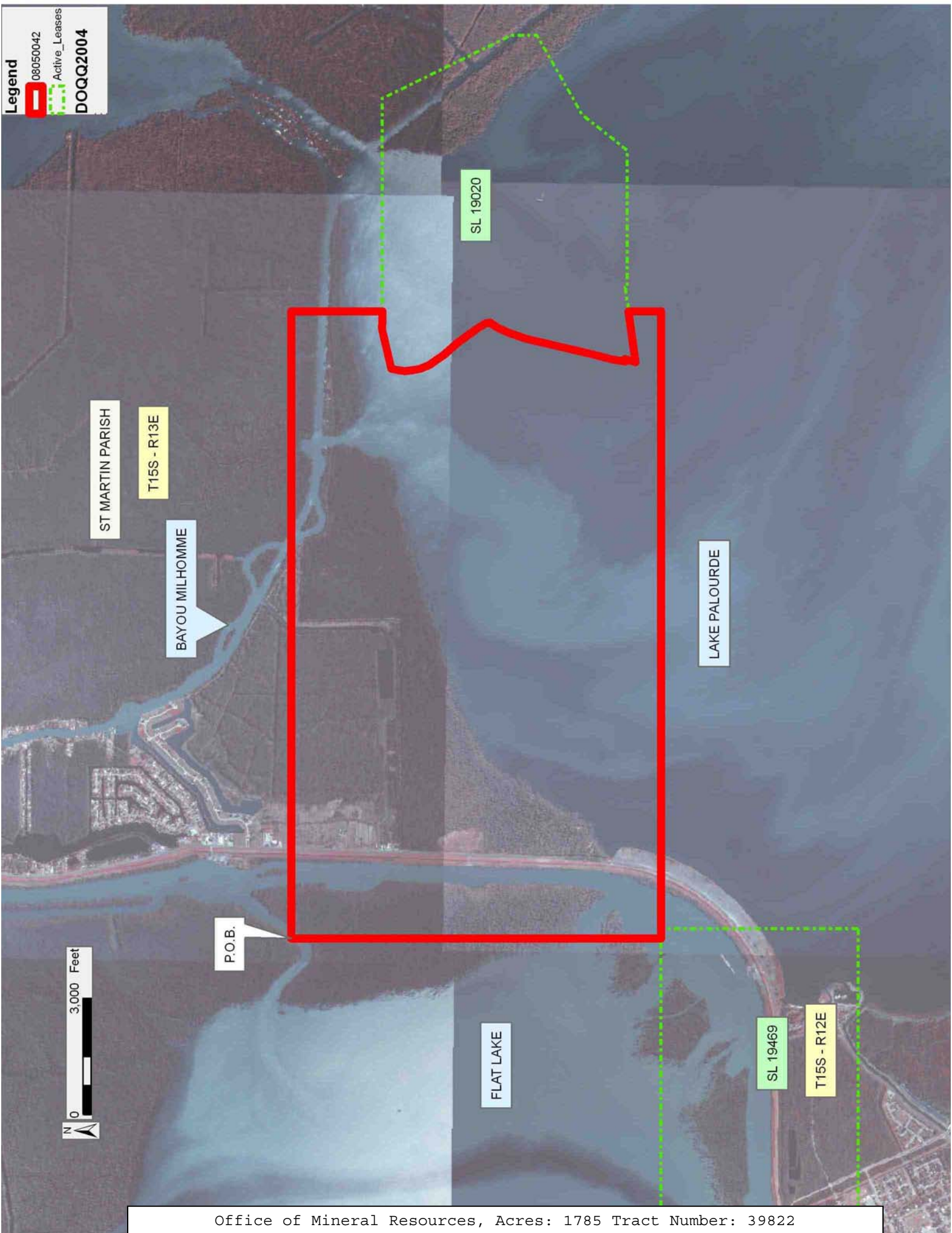
NOTE: The above description of the Tract nominated for lease has been provided and corrected, where required, exclusively by the nomination party. Any mineral lease selected from this Tract and awarded by the Louisiana State Mineral Board shall be without warranty of any kind, either express, implied, or statutory, including, but not limited to, the implied warranties of merchantability and fitness for a particular purpose. Should the mineral lease awarded by the Louisiana State Mineral Board be subsequently modified, cancelled or abrogated due to the existence of conflicting leases, operating agreements, private claims or other future obligations or conditions which may affect all or any portion of the leased Tract, it shall not relieve the Lessee of the obligation to pay any bonus due thereon to the Louisiana State Mineral Board, nor shall the Louisiana State Mineral Board be obligated to refund any consideration paid by the Lessor prior to such modification, cancellation, or abrogation, including, but not limited to, bonuses, rentals and royalties.

NOTE: The State of Louisiana does hereby reserve, and this lease shall be subject to, the imprescriptible right of surface use in the nature of a servitude in favor of the Department of Natural Resources, including its Offices and Commissions, for the sole purpose of implementing, constructing, servicing and maintaining approved coastal zone management and/or restoration projects. Utilization of any and all rights derived under this lease by the mineral lessee, its agents, successors or assigns, shall not interfere with nor hinder the reasonable surface use by the Department of Natural Resources, its Offices or Commissions, as herein above reserved.

Applicant: THEOPHILUS OIL, GAS & LAND SERVICES, LLC

Bidder	Cash Payment	Price/Acre	Rental	Oil	Gas	Other

Legend
08050042
Active_Leases
DOQQ2004



TRACT 39823 - Cameron Parish, Louisiana

All of the lands now or formerly constituting the beds and bottoms of all water bodies of every nature and description as to which title is vested in the State of Louisiana, together with all islands arising therein and other lands formed by accretion or by reliction, where allowed by law, excepting tax adjudicated lands, and not presently under mineral lease on May 14, 2008, situated in Cameron Parish, Louisiana, and more particularly described as follows: Beginning at a point on the East boundary of State Lease No. 18611 having Coordinates of X = 1,456,983.39 and Y = 404,482.75; thence East 9,237.36 feet to a point having Coordinates of X = 1,466,220.75 and Y = 404,482.75; thence South 4,194.06 feet having Coordinates of X = 1,466,220.75 and Y = 400,288.69; thence East 5,000.00 feet to a point having Coordinates of X = 1,471,220.75 and Y = 400,288.69; thence South 5,200.00 feet to a point having Coordinates of X = 1,471,220.75 and Y = 395,088.69; thence West 16,320.75 feet to a point having Coordinates of X = 1,454,900.00 and Y = 395,088.69; thence North 5,211.31 feet to the Southeast corner of State Lease No. 18610 having Coordinates of X = 1,454,900.00 and Y = 400,300.00; thence North 318.24 feet to the Southwest corner of State Lease No. 18612 having Coordinates of X = 1,454,900.00 and Y = 400,618.24; thence along the boundary of said State Lease No. 18612 the following courses: East 2,083.39 feet to a point having Coordinates of X = 1,456,983.39 and Y = 400,618.24 and North 154.40 feet to a point on the Southern boundary of State Lease No. 13893, as amended, having Coordinates of X = 1,456,983.39 and Y = 400,772.64; thence along the boundary of said State Lease No. 13893 the following courses: South 55 degrees 16 minutes 40 seconds East 472.17 feet; South 66 degrees 45 minutes 34 seconds East 190.40 feet; South 83 degrees 37 minutes 11 seconds East 199.23 feet; North 82 degrees 39 minutes 29 seconds East 194.62 feet; North 65 degrees 35 minutes 45 seconds East 193.33 feet; North 51 degrees 49 minutes 10 seconds East 305.50 feet; North 41 degrees 04 minutes 19 seconds East 490.51 feet and North 33 degrees 53 minutes 17 seconds East 366.02 feet to the Southernmost corner of State Lease No. 14357, as amended, having Coordinates of X = 1,458,880.00 and Y = 401,373.64; thence along the boundary of said State Lease No. 14357 the following courses: North 33 degrees 53 minutes 13 seconds East 237.25 feet; North 27 degrees 25 minutes 16 seconds East 502.29 feet and North 85 degrees 04 minutes 36 seconds West 364.95 feet to its Northwest corner, also being the Northeast corner of said State Lease No. 13893 having Coordinates of X = 1,458,880.00 and Y = 402,047.77; thence North 85 degrees 04 minutes 38 seconds West 1,903.63 feet along the Northern boundary of said State Lease No. 13893 to a point on the Eastern boundary of said State Lease No. 18612 having Coordinates of X = 1,456,983.39 and Y = 402,211.13; thence North 288.87 feet along the Eastern boundary of said State Lease No. 18612 to its Northeast corner, also being the Southeast corner of said State Lease No. 18611 having Coordinates of X = 1,456,983.39 and Y = 402,500.00; thence North 1,982.75 feet along the East boundary of said State Lease No. 18611 to the point of beginning, containing approximately **1,605 acres**, all as more particularly outlined on a plat on file in the Office of Mineral Resources, Department of Natural

Resources. All bearings, distances and coordinates are based on Louisiana Coordinate System of 1927, (North or South Zone), where applicable.

NOTE: The above description of the Tract nominated for lease has been provided and corrected, where required, exclusively by the nomination party. Any mineral lease selected from this Tract and awarded by the Louisiana State Mineral Board shall be without warranty of any kind, either express, implied, or statutory, including, but not limited to, the implied warranties of merchantability and fitness for a particular purpose. Should the mineral lease awarded by the Louisiana State Mineral Board be subsequently modified, cancelled or abrogated due to the existence of conflicting leases, operating agreements, private claims or other future obligations or conditions which may affect all or any portion of the leased Tract, it shall not relieve the Lessee of the obligation to pay any bonus due thereon to the Louisiana State Mineral Board, nor shall the Louisiana State Mineral Board be obligated to refund any consideration paid by the Lessor prior to such modification, cancellation, or abrogation, including, but not limited to, bonuses, rentals and royalties.

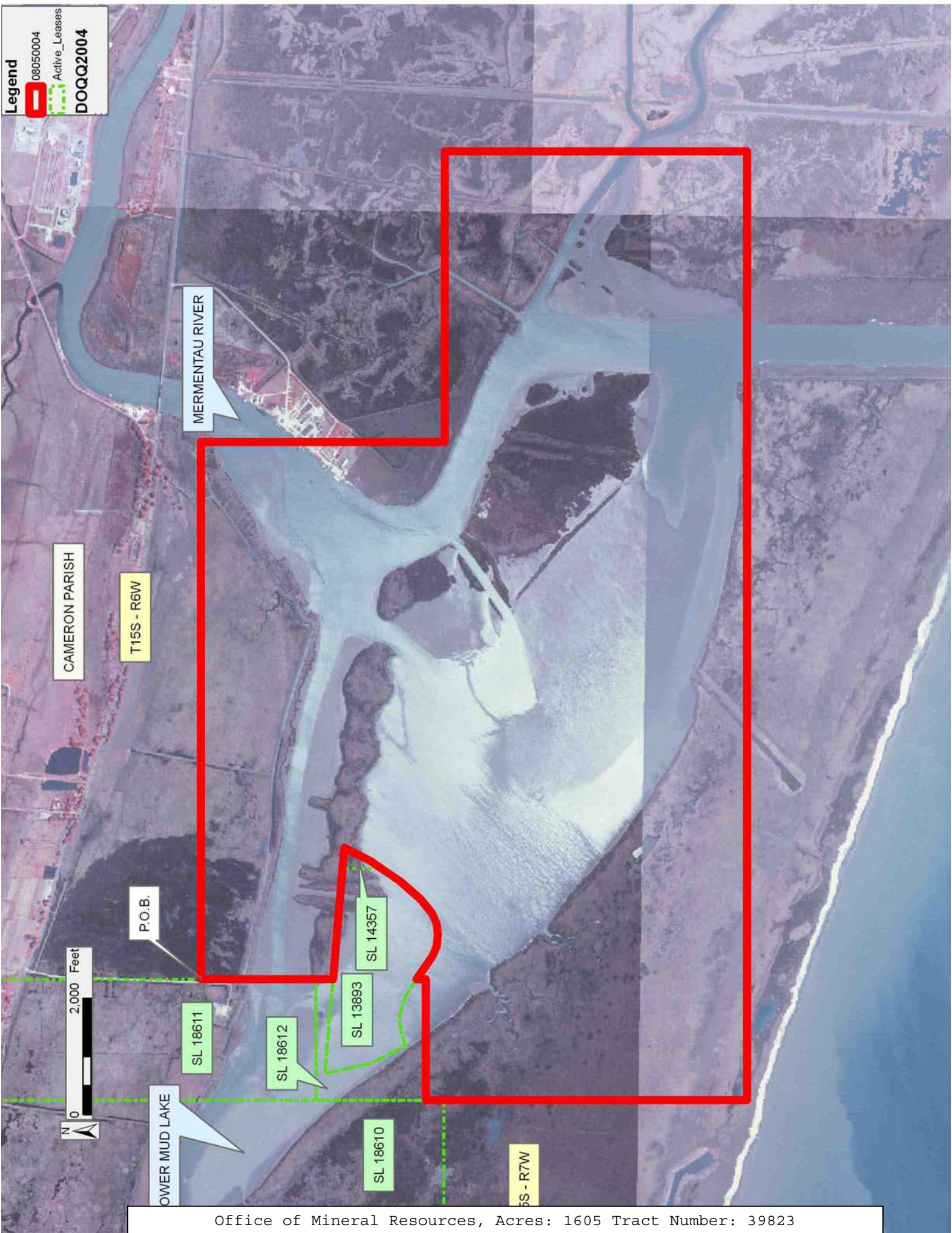
NOTE: The State of Louisiana does hereby reserve, and this lease shall be subject to, the imprescriptible right of surface use in the nature of a servitude in favor of the Department of Natural Resources, including its Offices and Commissions, for the sole purpose of implementing, constructing, servicing and maintaining approved coastal zone management and/or restoration projects. Utilization of any and all rights derived under this lease by the mineral lessee, its agents, successors or assigns, shall not interfere with nor hinder the reasonable surface use by the Department of Natural Resources, its Offices or Commissions, as herein above reserved.

Applicant: HILLIARD ACQUISITIONS III LLC

Bidder	Cash Payment	Price/Acre	Rental	Oil	Gas	Other

Legend

- 08050004
- Active_Leases
- DOQQ2004



TRACT 39824 - St. Martin and St. Mary Parishes, Louisiana

All of the lands now or formerly constituting the beds and bottoms of all water bodies of every nature and description as to which title is vested in the State of Louisiana, together with all islands arising therein and other lands formed by accretion or by reliction, where allowed by law, excepting tax adjudicated lands, and not presently under mineral lease on May 14, 2008, situated in St. Martin and St. Mary Parishes, Louisiana, and more particularly described as follows: Beginning at a point having Coordinates of X = 2,029,473.87 and Y = 392,148.39; thence East 18,480.00 feet to a point having Coordinates of X = 2,047,953.87 and Y = 392,148.39; thence South 4,909.99 feet to a point on the North boundary of State Lease No. 19469 having Coordinates of X = 2,047,953.87 and Y = 387,238.40; thence along the North, West and South boundary of said State Lease No. 19469 the following courses and distances: West 8,909.09 feet to a corner having Coordinates of X = 2,039,044.78 and Y = 387,238.40, South 5,088.00 feet to a corner having Coordinates of X = 2,039,044.78 and Y = 382,150.40 and East 8,909.09 feet to a point having Coordinates of X = 2,047,953.87 and Y = 382,150.40; thence South 1,701.05 feet to a point having Coordinates of X = 2,047,953.87 and Y = 380,449.35; thence West 18,480.00 feet to a point having Coordinates of X = 2,029,473.87 and Y = 380,449.35; thence North 1,700.00 feet to the Southeast corner of State Lease No. 17988 having Coordinates of X = 2,029,473.87 and Y = 382,149.35; thence North 3,179.20 feet along the East boundary of said State Lease No. 17988 to its Northeast corner having Coordinates of X = 2,029,473.87 and Y = 385,328.55; thence North 6,819.84 feet to the point of beginning, containing approximately **1,714 acres**, all as more particularly outlined on a plat on file in the Office of Mineral Resources, Department of Natural Resources. All bearings, distances and coordinates are based on Louisiana Coordinate System of 1927, (North or South Zone), where applicable.

NOTE: The above description of the Tract nominated for lease has been provided and corrected, where required, exclusively by the nomination party. Any mineral lease selected from this Tract and awarded by the Louisiana State Mineral Board shall be without warranty of any kind, either express, implied, or statutory, including, but not limited to, the implied warranties of merchantability and fitness for a particular purpose. Should the mineral lease awarded by the Louisiana State Mineral Board be subsequently modified, cancelled or abrogated due to the existence of conflicting leases, operating agreements, private claims or other future obligations or conditions which may affect all or any portion of the leased Tract, it shall not relieve the Lessee of the obligation to pay any bonus due thereon to the Louisiana State Mineral Board, nor shall the Louisiana State Mineral Board be obligated to refund any consideration paid by the Lessor prior to such modification, cancellation, or abrogation, including, but not limited to, bonuses, rentals and royalties.

NOTE: The State of Louisiana does hereby reserve, and this lease shall be subject to, the imprescriptible right of surface use in the nature of a servitude in favor of the Department of Natural Resources, including its

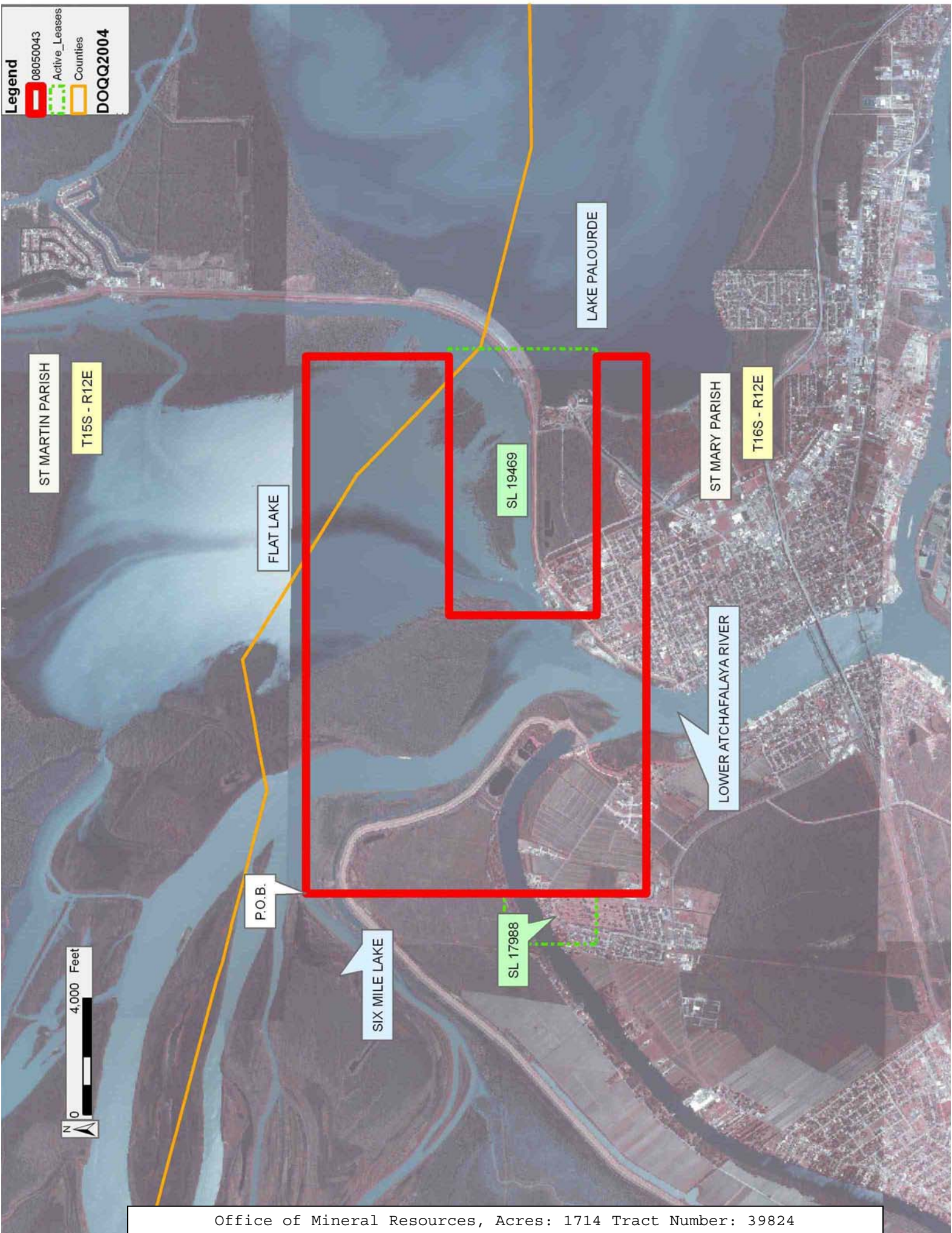
Offices and Commissions, for the sole purpose of implementing, constructing, servicing and maintaining approved coastal zone management and/or restoration projects. Utilization of any and all rights derived under this lease by the mineral lessee, its agents, successors or assigns, shall not interfere with nor hinder the reasonable surface use by the Department of Natural Resources, its Offices or Commissions, as herein above reserved.

Applicant: THEOPHILUS OIL, GAS & LAND SERVICES, LLC

Bidder	Cash Payment	Price/Acre	Rental	Oil	Gas	Other

Legend

- 08050043
- Active_Leases
- Counties
- DOQQ2004



TRACT 39825 - St. Mary Parish, Louisiana

All of the lands now or formerly constituting the beds and bottoms of all water bodies of every nature and description as to which title is vested in the State of Louisiana, together with all islands arising therein and other lands formed by accretion or by reliction, where allowed by law, excepting tax adjudicated lands, and not presently under mineral lease on May 14, 2008, situated in St. Mary Parish, Louisiana, and more particularly described as follows: Beginning at a point having Coordinates of X = 2,013,628.00 and Y = 392,148.39; thence East 15,845.87 feet to a point having Coordinates of X = 2,029,473.87 and Y = 392,148.39; thence South 6,819.84 feet to the Northeast corner of State Lease No. 17988 having Coordinates of X = 2,029,473.87 and Y = 385,328.55; thence West 1,735.96 feet along the North boundary of said State Lease No. 17988 to its Northwest corner, also being the Northeast corner of State Lease No. 17989 having Coordinates of X = 2,027,737.91 and Y = 385,328.55; thence along the North, West and South boundary of said State Lease No. 17989 the following courses and distances: West 4,895.55 feet to a corner having Coordinates of X = 2,022,842.36 and Y = 385,328.55, South 3,179.20 feet to a corner having Coordinates of X = 2,022,842.36 and Y = 382,149.35 and East 4,895.55 feet to its Southeast corner, also being the Southwest corner of said State Lease No. 17988 having Coordinates of X = 2,027,737.91 and Y = 382,149.35; thence East 1,735.96 feet along the South boundary of said State Lease No. 17988 to its Southeast corner having Coordinates of X = 2,029,473.87 and Y = 382,149.35; thence South 1,700.00 feet to a point having Coordinates of X = 2,029,473.87 and Y = 380,449.35; thence West approximately 15,991 feet to a point on the East boundary of State Lease No. 1685 having a Coordinate of Y = 380,449.35; thence Northerly approximately 3,631 feet along the East boundary of said State Lease No. 1685 to its Northeast corner; thence Northerly approximately 8,070 feet to the point of beginning, containing approximately **790 acres**, all as more particularly outlined on a plat on file in the Office of Mineral Resources, Department of Natural Resources. All bearings, distances and coordinates are based on Louisiana Coordinate System of 1927, (North or South Zone), where applicable.

NOTE: The above description of the Tract nominated for lease has been provided and corrected, where required, exclusively by the nomination party. Any mineral lease selected from this Tract and awarded by the Louisiana State Mineral Board shall be without warranty of any kind, either express, implied, or statutory, including, but not limited to, the implied warranties of merchantability and fitness for a particular purpose. Should the mineral lease awarded by the Louisiana State Mineral Board be subsequently modified, cancelled or abrogated due to the existence of conflicting leases, operating agreements, private claims or other future obligations or conditions which may affect all or any portion of the leased Tract, it shall not relieve the Lessee of the obligation to pay any bonus due thereon to the Louisiana State Mineral Board, nor shall the Louisiana State Mineral Board be obligated to refund any consideration

paid by the Lessor prior to such modification, cancellation, or abrogation, including, but not limited to, bonuses, rentals and royalties.

NOTE: The State of Louisiana does hereby reserve, and this lease shall be subject to, the imprescriptible right of surface use in the nature of a servitude in favor of the Department of Natural Resources, including its Offices and Commissions, for the sole purpose of implementing, constructing, servicing and maintaining approved coastal zone management and/or restoration projects. Utilization of any and all rights derived under this lease by the mineral lessee, its agents, successors or assigns, shall not interfere with nor hinder the reasonable surface use by the Department of Natural Resources, its Offices or Commissions, as herein above reserved.

Applicant: THEOPHILUS OIL, GAS & LAND SERVICES, LLC

Bidder	Cash Payment	Price/Acre	Rental	Oil	Gas	Other

Legend
08050044
Active_Leases
DOQQ2004

