

TRACT 39067 - Iberia Parish, Louisiana

All of the lands now or formerly constituting the beds and bottoms of all water bodies of every nature and description the title of which vests in the State of Louisiana, together with all islands arising therein and other lands formed by accretion or by reliction, where allowed by law, excepting tax adjudicated lands, and not presently under mineral lease on May 9, 2007, situated in Iberia Parish, Louisiana, and more particularly described as follows: Beginning at a point having Coordinates of X = 1,874,303.00 and Y = 305,012.00; thence East 14,760.00 feet to a point having Coordinates of X = 1,889,063.00 and Y = 305,012.00; thence South 2,583.42 feet to a point on the boundary of State Lease No. 19023 having Coordinates of X = 1,889,063.00 and Y = 302,428.58; thence along the boundary of said State Lease No. 19023 the following courses: South 62 degrees 10 minutes 12 seconds West 5,189.20 feet; South 36 degrees 46 minutes 44 seconds East 1,760.40 feet and North 67 degrees 01 minutes 11 seconds East 3,839.73 feet to a point having Coordinates of X = 1,889,063.00 and Y = 300,095.09; thence South 2,461.09 feet to a point having Coordinates of X = 1,889,063.00 and Y = 297,634.00; thence West 14,760.00 feet to a point having Coordinates of X = 1,874,303.00 and Y = 297,634.00; thence North 7,378.00 feet to the point of beginning, containing approximately **2,301.72 acres**, all as more particularly outlined on a plat on file in the Office of Mineral Resources, Department of Natural Resources. All bearings, distances and coordinates are based on Louisiana Coordinate System of 1927, (North or South Zone), where applicable.

NOTE: The above description of the Tract nominated for lease has been provided and corrected, where required, exclusively by the nomination party. Any mineral lease selected from this Tract and awarded by the Louisiana State Mineral Board shall be without warranty of any kind, either express, implied, or statutory, including, but not limited to, the implied warranties of merchantability and fitness for a particular purpose. Should the mineral lease awarded by the Louisiana State Mineral Board be subsequently modified, cancelled or abrogated due to the existence of conflicting leases, operating agreements, private claims or other future obligations or conditions which may affect all or any portion of the leased Tract, it shall not relieve the Lessee of the obligation to pay any bonus due thereon to the Louisiana State Mineral Board, nor shall the Louisiana State Mineral Board be obligated to refund any consideration paid by the Lessor prior to such modification, cancellation, or abrogation, including, but not limited to, bonuses, rentals and royalties.

NOTE: The Office of Mineral Resources will require a minimum bonus of \$300 per acre and a minimum royalty of 25%.

NOTE: The above described tract may be in the vicinity of existing shell reefs where drilling and dredging operations must be conducted in strict conformity with the regulations adopted by the Louisiana Department of Wildlife and Fisheries and/or the U.S. Corps of Engineers, U.S. Army.

NOTE: The State of Louisiana does hereby reserve, and this lease shall be subject to, the imprescriptible right of surface use in the nature of a servitude in favor of the Department of Natural Resources, including its Offices and Commissions, for the sole purpose of implementing, constructing, servicing and maintaining approved coastal zone management and/or restoration projects. Utilization of any and all rights derived under this lease by the mineral lessee, its agents, successors or assigns, shall not interfere with nor hinder the reasonable surface use by the Department of Natural Resources, its Offices or Commissions, as herein above reserved.

NOTE: The Department of Wildlife and Fisheries has designated certain areas in the coastal waters of the State of Louisiana as Oyster Seed Bed Areas. The exact location of those Seed Bed Areas must be obtained from the Department of Wildlife and Fisheries and any work done under a mineral lease from the State of Louisiana may necessarily be conducted in conformity with the rules and regulations promulgated by the said Department of Wildlife and Fisheries for Oyster Seed Bed Areas.

Applicant: PATRICK L. DONOHUE PETROLEUM PROPERTIES, INC.

Bidder	Cash Payment	Price/ Acre	Rental	Oil	Gas	Other

Legend

07050066

Blocks

Active_Leases



IBERIA PARISH

VERMILION BAY

P.O.B.

SL 19023

EI0003

EUGENE ISLAND AREA, REVISED

EI0004

GULF OF MEXICO

TRACT 39068 - Jefferson and Plaquemines Parishes, Louisiana

All of the lands now or formerly constituting the beds and bottoms of all water bodies of every nature and description the title of which vests in the State of Louisiana, together with all islands arising therein and other lands formed by accretion or by reliction, where allowed by law, excepting tax adjudicated lands, and not presently under mineral lease on May 9, 2007, situated in Jefferson and Plaquemines Parishes, Louisiana, and more particularly described as follows: Beginning at a point having Coordinates of X = 2,427,268.00 and Y = 293,955.00; thence East 5,452.61 feet to a point on the Western boundary of State Lease No. 13407, as amended, having Coordinates of X = 2,432,720.61 and Y = 293,955.00; thence along the boundary of said State Lease No. 13407 the following courses: Southwesterly along a curve to the right having a radius of 5,000.00 feet and a center point at X = 2,430,272.11 and Y = 298,314.45 to a point having Coordinates of X = 2,432,620.00 and Y = 293,900.00; South 21 degrees 12 minutes 23 seconds East 2,070.87 feet to a point having Coordinates of X = 2,433,369.09 and Y = 291,969.36; South 69 degrees 10 minutes 45 seconds East 814.07 feet to a point having Coordinates of X = 2,434,130.00 and Y = 291,680.00 and Northeasterly along a curve to the left having a radius of 13,000.00 feet and a center at X = 2,424,693.16 and Y = 300,621.26 to a point having Coordinates of X = 2,435,990.00 and Y = 294,188.41; thence South 9,488.41 feet to a point having Coordinates of X = 2,435,990.00 and Y = 284,700.00; thence West 2,352.00 feet to a point on the East boundary of State Lease No. 18046 having Coordinates of X = 2,433,638.00 and Y = 284,700.00; thence along the boundary of said State Lease No. 18046 the following courses: North 1,724.00 feet to a point having Coordinates of X = 2,433,638.00 and Y = 286,424.00; North 46 degrees 07 minutes 04 seconds West 1,159.88 feet to a point having Coordinates of X = 2,432,802.00 and Y = 287,228.00 and South 51 degrees 30 minutes 13 seconds West 2,941.30 feet to the Northwest corner of said State Lease No. 18046, also being the Northeast corner of State Lease No. 18162 having Coordinates of X = 2,430,500.00 and Y = 285,397.15; thence West 3,232.00 feet along the North boundary of said State Lease No. 18162 to a point having Coordinates of X = 2,427,268.00 and Y = 285,397.15; thence North 8,557.85 feet to the point of beginning, **LESS AND EXCEPT** any portion of State Lease No. 16007 as amended, State Lease No. 16006 as amended, and State Lease No. 15858 as amended, that lies within the above described tract; these leases comprising the 10,400' RA SUA being more particularly described as follows: Commencing at the point of beginning of the above described nominated tract having Coordinates of X = 2,427,268.00 and Y = 293,955.00; thence South 82 degrees 57 minutes 46 seconds East 2,073.40 feet to the point of beginning of said 10,400' RA SUA having Coordinates of X = 2,429,325.78 and Y = 293,700.97; thence along the boundary of said 10,400' RA SUA the following courses: South 68 degrees 32 minutes 33 seconds East 2,387.08 feet to a point having Coordinates of X = 2,431,547.41 and Y = 292,827.75; Southeasterly along a curve to the right having a radius of 4,000.00 feet and a center at X = 2,427,673.35 and Y = 291,831.92 to a point having Coordinates of X = 2,431,623.62 and Y = 291,203.10; Southwesterly along a curve to the right having a radius of

1,686.00 feet and a center at X = 2,430,000.21 and Y = 291,658.22 to a point having Coordinates of X = 2,430,917.06 and Y = 290,243.31; Southwesterly along a curve to the right having a radius of 1,760.00 feet and a center at X = 2,429,853.93 and Y = 291,645.93 to a point having Coordinates of X = 2,429,925.34 and Y = 289,887.38; Northwesterly along a curve to the left having a radius of 6,740.00 feet and a center at X = 2,423,269.81 and Y = 288,823.68 to a point having Coordinates of X = 2,429,833.48 and Y = 290,355.29; Northwesterly along a curve to the right having a radius of 6,850.00 feet and a center at X = 2,436,504.25 and Y = 291,911.98 to a point having Coordinates of X = 2,429,667.06 and Y = 291,493.18; Northwesterly along a curve to the left having a radius of 16,210.00 feet and a center at X = 2,413,538.83 and Y = 289,867.09 to a point having Coordinates of X = 2,429,538.82 and Y = 292,467.91 and North 09 degrees 48 minutes 09 seconds West 1,251.33 feet to the point of beginning; (This nomination includes only waterbottoms claimed and owned by the state and specifically excludes any land which the state may claim or own and to which the mineral rights are vested in the state), the nominated tract containing approximately **1,252 acres**, all as more particularly outlined on a plat on file in the Office of Mineral Resources, Department of Natural Resources. All bearings, distances and coordinates are based on Louisiana Coordinate System of 1927, (North or South Zone), where applicable.

NOTE: The above description of the Tract nominated for lease has been provided and corrected, where required, exclusively by the nomination party. Any mineral lease selected from this Tract and awarded by the Louisiana State Mineral Board shall be without warranty of any kind, either express, implied, or statutory, including, but not limited to, the implied warranties of merchantability and fitness for a particular purpose. Should the mineral lease awarded by the Louisiana State Mineral Board be subsequently modified, cancelled or abrogated due to the existence of conflicting leases, operating agreements, private claims or other future obligations or conditions which may affect all or any portion of the leased Tract, it shall not relieve the Lessee of the obligation to pay any bonus due thereon to the Louisiana State Mineral Board, nor shall the Louisiana State Mineral Board be obligated to refund any consideration paid by the Lessor prior to such modification, cancellation, or abrogation, including, but not limited to, bonuses, rentals and royalties.

NOTE: The State of Louisiana does hereby reserve, and this lease shall be subject to, the imprescriptible right of surface use in the nature of a servitude in favor of the Department of Natural Resources, including its Offices and Commissions, for the sole purpose of implementing, constructing, servicing and maintaining approved coastal zone management and/or restoration projects. Utilization of any and all rights derived under this lease by the mineral lessee, its agents, successors or assigns, shall not interfere with nor hinder the reasonable surface use by the Department of Natural Resources, its Offices or Commissions, as herein above reserved.

NOTE: The Department of Wildlife and Fisheries has designated certain areas in the coastal waters of the State of Louisiana as Oyster Seed Bed Areas. The exact location of those Seed Bed Areas must be obtained from the Department of Wildlife and Fisheries and any work done under a mineral lease from the State of Louisiana may necessarily be conducted in conformity with the rules and regulations promulgated by the said Department of Wildlife and Fisheries for Oyster Seed Bed Areas.

Applicant: ROBERT A. SCHROEDER, INC.

Bidder	Cash Payment	Price/ Acre	Rental	Oil	Gas	Other

Legend

07050051

Active_Leases

Counties

DOQQ2004



TRACT 39069 - Plaquemines Parish, Louisiana

All of the lands now or formerly constituting the beds and bottoms of all water bodies of every nature and description the title of which vests in the State of Louisiana, together with all islands arising therein and other lands formed by accretion or by reliction, where allowed by law, excepting tax adjudicated lands, and not presently under mineral lease on May 9, 2007, situated in Plaquemines Parish, Louisiana, and more particularly described as follows: Beginning at a point having Coordinates of X = 2,453,618.00 and Y = 293,955.00; thence South 9,255.00 feet to a point having Coordinates of X = 2,453,618.00 and Y = 284,700.00; thence West 5,518.00 feet to the Northeast corner of State Lease No. 18669 having Coordinates of X = 2,448,100.00 and Y = 284,700.00; thence West 3,132.00 feet along the North boundary of said State Lease No. 18669 to a point having Coordinates of X = 2,444,968.00 and Y = 284,700.00; thence North 4,788.27 feet to a point on the South boundary of State Lease No. 12721, as amended, having Coordinates of X = 2,444,968.00 and Y = 289,488.27; thence along the boundary of said State Lease No. 12721 the following courses: North 83 degrees 37 minutes 00 seconds East 1,340.81 feet to its Southeast corner having Coordinates of X = 2,446,300.50 and Y = 289,637.34 and North 06 degrees 23 minutes 00 seconds West 666.79 feet to its Northeast corner, also being the Southeast corner of State Lease No. 11036, as amended, having Coordinates of X = 2,446,226.36 and Y = 290,300.00; thence along the boundary of said State Lease No. 11036 the following courses: North 06 degrees 23 minutes 00 seconds West 1,199.97 feet to its Northeast corner having Coordinates of X = 2,446,092.95 and Y = 291,492.53 and South 83 degrees 37 minutes 00 seconds West 1,131.97 feet to a point having Coordinates of X = 2,444,968.00 and Y = 291,366.68; thence North 2,588.32 feet to a point having Coordinates of X = 2,444,968.00 and Y = 293,955.00; thence East 8,650.00 feet to the point of beginning, containing approximately **1,575 acres**, all as more particularly outlined on a plat on file in the Office of Mineral Resources, Department of Natural Resources. All bearings, distances and coordinates are based on Louisiana Coordinate System of 1927, (North or South Zone), where applicable.

NOTE: The above description of the Tract nominated for lease has been provided and corrected, where required, exclusively by the nomination party. Any mineral lease selected from this Tract and awarded by the Louisiana State Mineral Board shall be without warranty of any kind, either express, implied, or statutory, including, but not limited to, the implied warranties of merchantability and fitness for a particular purpose. Should the mineral lease awarded by the Louisiana State Mineral Board be subsequently modified, cancelled or abrogated due to the existence of conflicting leases, operating agreements, private claims or other future obligations or conditions which may affect all or any portion of the leased Tract, it shall not relieve the Lessee of the obligation to pay any bonus due thereon to the Louisiana State Mineral Board, nor shall the Louisiana State Mineral Board be obligated to refund any consideration

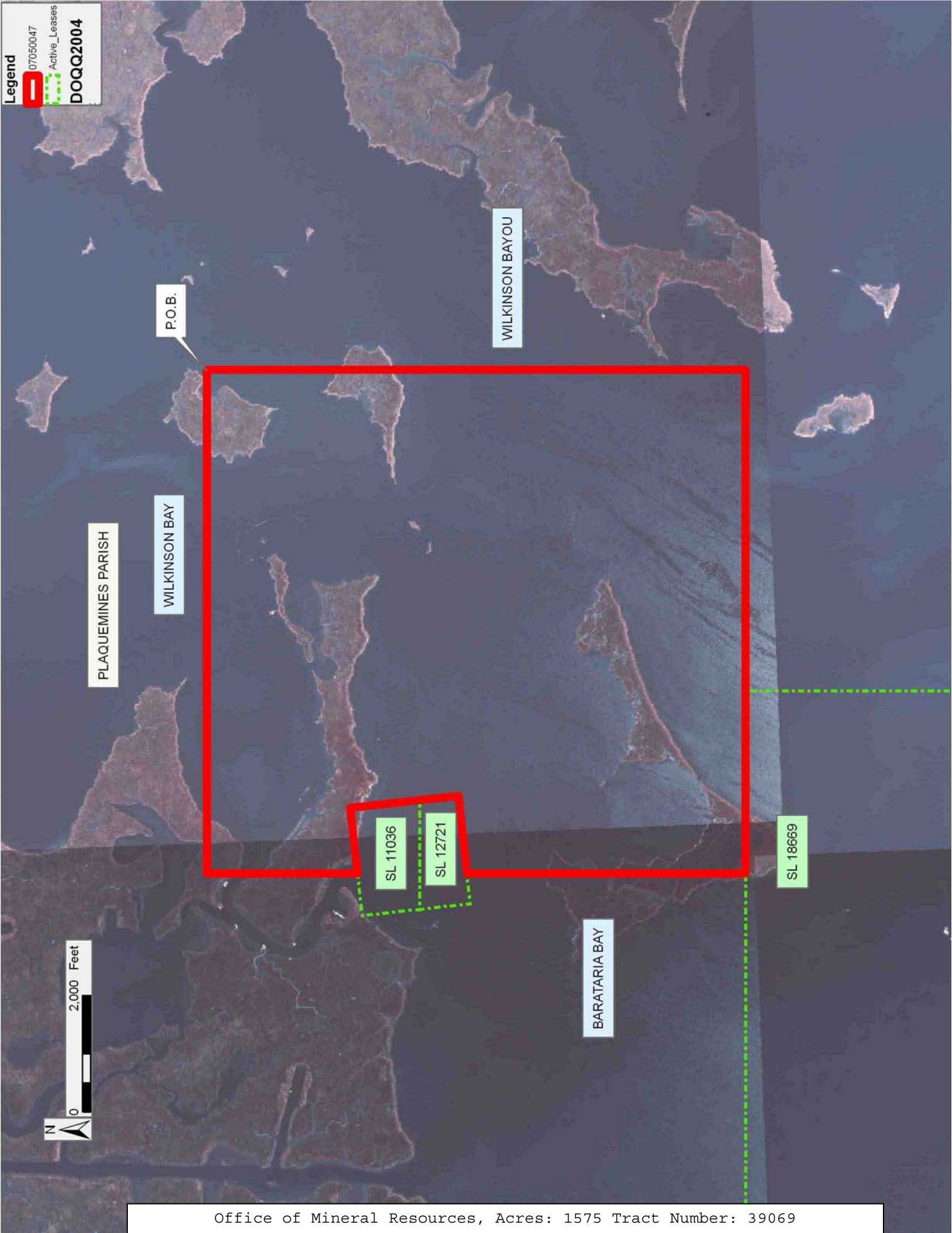
paid by the Lessor prior to such modification, cancellation, or abrogation, including, but not limited to, bonuses, rentals and royalties.

NOTE: The State of Louisiana does hereby reserve, and this lease shall be subject to, the imprescriptible right of surface use in the nature of a servitude in favor of the Department of Natural Resources, including its Offices and Commissions, for the sole purpose of implementing, constructing, servicing and maintaining approved coastal zone management and/or restoration projects. Utilization of any and all rights derived under this lease by the mineral lessee, its agents, successors or assigns, shall not interfere with nor hinder the reasonable surface use by the Department of Natural Resources, its Offices or Commissions, as herein above reserved.

NOTE: The Department of Wildlife and Fisheries has designated certain areas in the coastal waters of the State of Louisiana as Oyster Seed Bed Areas. The exact location of those Seed Bed Areas must be obtained from the Department of Wildlife and Fisheries and any work done under a mineral lease from the State of Louisiana may necessarily be conducted in conformity with the rules and regulations promulgated by the said Department of Wildlife and Fisheries for Oyster Seed Bed Areas.

Applicant: ROBERT A. SCHROEDER, INC.

Bidder	Cash Payment	Price/ Acre	Rental	Oil	Gas	Other



TRACT 39070 - Plaquemines Parish, Louisiana

All of the lands now or formerly constituting the beds and bottoms of all water bodies of every nature and description the title of which vests in the State of Louisiana, together with all islands arising therein and other lands formed by accretion or by reliction, where allowed by law, excepting tax adjudicated lands, and not presently under mineral lease on May 9, 2007, situated in Plaquemines Parish, Louisiana, and more particularly described as follows: Beginning at a point having Coordinates of X = 2,453,618.00 and Y = 293,955.00; thence East 8,650.00 feet to a point having Coordinates of X = 2,462,268.00 and Y = 293,955.00; thence South 430.95 feet to a point on the Northern boundary of State Lease No. 8512, as amended, having Coordinates of X = 2,462,268.00 and Y = 293,524.05; thence along the boundary of said State Lease No. 8512 the following courses: North 69 degrees 33 minutes 25 seconds West 914.09 feet to a point having Coordinates of X = 2,461,411.47 and Y = 293,843.32; South 28 degrees 30 minutes 38 seconds West 1,513.24 feet to a point having Coordinates of X = 2,460,689.17 and Y = 292,513.59; South 26 degrees 02 minutes 18 seconds West 644.60 feet to a point having Coordinates of X = 2,460,406.21 and Y = 291,934.42 and South 62 degrees 58 minutes 06 seconds East 2,090.12 feet to a point having Coordinates of X = 2,462,268.00 and Y = 290,984.49; thence South 6,284.49 feet to a point having Coordinates of X = 2,462,268.00 and Y = 284,700.00; thence West 8,650.00 feet to a point having Coordinates of X = 2,453,618.00 and Y = 284,700.00; thence North 9,255.00 feet to the point of beginning, containing approximately **1,359 acres**, all as more particularly outlined on a plat on file in the Office of Mineral Resources, Department of Natural Resources. All bearings, distances and coordinates are based on Louisiana Coordinate System of 1927, (North or South Zone), where applicable.

NOTE: The above description of the Tract nominated for lease has been provided and corrected, where required, exclusively by the nomination party. Any mineral lease selected from this Tract and awarded by the Louisiana State Mineral Board shall be without warranty of any kind, either express, implied, or statutory, including, but not limited to, the implied warranties of merchantability and fitness for a particular purpose. Should the mineral lease awarded by the Louisiana State Mineral Board be subsequently modified, cancelled or abrogated due to the existence of conflicting leases, operating agreements, private claims or other future obligations or conditions which may affect all or any portion of the leased Tract, it shall not relieve the Lessee of the obligation to pay any bonus due thereon to the Louisiana State Mineral Board, nor shall the Louisiana State Mineral Board be obligated to refund any consideration paid by the Lessor prior to such modification, cancellation, or abrogation, including, but not limited to, bonuses, rentals and royalties.

NOTE: The State of Louisiana does hereby reserve, and this lease shall be subject to, the imprescriptible right of surface use in the nature of a servitude in favor of the Department of Natural Resources, including its Offices and Commissions, for the sole purpose of implementing,

constructing, servicing and maintaining approved coastal zone management and/or restoration projects. Utilization of any and all rights derived under this lease by the mineral lessee, its agents, successors or assigns, shall not interfere with nor hinder the reasonable surface use by the Department of Natural Resources, its Offices or Commissions, as herein above reserved.

NOTE: The Department of Wildlife and Fisheries has designated certain areas in the coastal waters of the State of Louisiana as Oyster Seed Bed Areas. The exact location of those Seed Bed Areas must be obtained from the Department of Wildlife and Fisheries and any work done under a mineral lease from the State of Louisiana may necessarily be conducted in conformity with the rules and regulations promulgated by the said Department of Wildlife and Fisheries for Oyster Seed Bed Areas.

Applicant: ROBERT A. SCHROEDER, INC.

Bidder	Cash Payment	Price/ Acre	Rental	Oil	Gas	Other

Legend

 07050044

 Active_Leases

DOQQ2004



SL 8512

BAY JIMMY

PLAQUEMINES PARISH

BARATARIA BAY

P.O.B.

WILKINSON BAYOU

TRACT 39071 - Jefferson Parish, Louisiana

All of the lands now or formerly constituting the beds and bottoms of all water bodies of every nature and description the title of which vests in the State of Louisiana, together with all islands arising therein and other lands formed by accretion or by reliction, where allowed by law, excepting tax adjudicated lands, and not presently under mineral lease on May 9, 2007, situated in Jefferson Parish, Louisiana, and more particularly described as follows: Beginning at a point having Coordinates of X = 2,427,268.00 and Y = 293,955.00; thence South 8,557.85 feet to a point on the North boundary of State Lease No. 18162 having Coordinates of X = 2,427,268.00 and Y = 285,397.15; thence along the boundary of said State Lease No. 18162 the following courses: West 285.00 feet to a point having Coordinates of X = 2,426,983.00 and Y = 285,397.15 and South 48 degrees 11 minutes 10 seconds West 1,045.65 feet to a point having Coordinates of X = 2,426,203.66 and Y = 284,700.00; thence West 9,281.85 feet to a point having Coordinates of X = 2,416,921.81 and Y = 284,700.00; thence North 9,255.00 feet to a point having Coordinates of X = 2,416,921.81 and Y = 293,955.00; thence East 2,578.19 feet to a point on the West boundary of State Lease No. 19042 having Coordinates of X = 2,419,500.00 and Y = 293,955.00; thence South 3,141.17 feet along the West boundary of said State Lease No. 19042 to its Southwest corner, also being the Northwest corner of State Lease No. 19044 having Coordinates of X = 2,419,500.00 and Y = 290,813.83; thence South 3,043.45 feet along the West boundary of said State Lease No. 19044 to its Southwest corner, also being the Westernmost Northwest corner of State Lease No. 19045 having Coordinates of X = 2,419,500.00 and Y = 287,770.38; thence along the boundary of said State Lease No. 19045 the following courses: South 1,227.05 feet to a point having Coordinates of X = 2,419,500.00 and Y = 286,543.33; South 89 degrees 59 minutes 09 seconds East 5,317.02 feet to a point having Coordinates of X = 2,424,817.02 and Y = 286,542.02 and North 00 degrees 20 minutes 57 seconds East 4,271.90 feet to its Northeast corner, also being the Southeast corner of State Lease No. 19043 having Coordinates of X = 2,424,843.06 and Y = 290,813.83; thence North 00 degrees 20 minutes 57 seconds East 3,141.23 feet along the East boundary of said State Lease No. 19043 to a point having Coordinates of X = 2,424,862.20 and Y = 293,955.00; thence East 2,405.80 feet to the point of beginning, containing approximately **767 acres**, all as more particularly outlined on a plat on file in the Office of Mineral Resources, Department of Natural Resources. All bearings, distances and coordinates are based on Louisiana Coordinate System of 1927, (North or South Zone), where applicable.

NOTE: The above description of the Tract nominated for lease has been provided and corrected, where required, exclusively by the nomination party. Any mineral lease selected from this Tract and awarded by the Louisiana State Mineral Board shall be without warranty of any kind, either express, implied, or statutory, including, but not limited to, the implied warranties of merchantability and fitness for a particular purpose. Should the mineral lease awarded by the Louisiana State Mineral

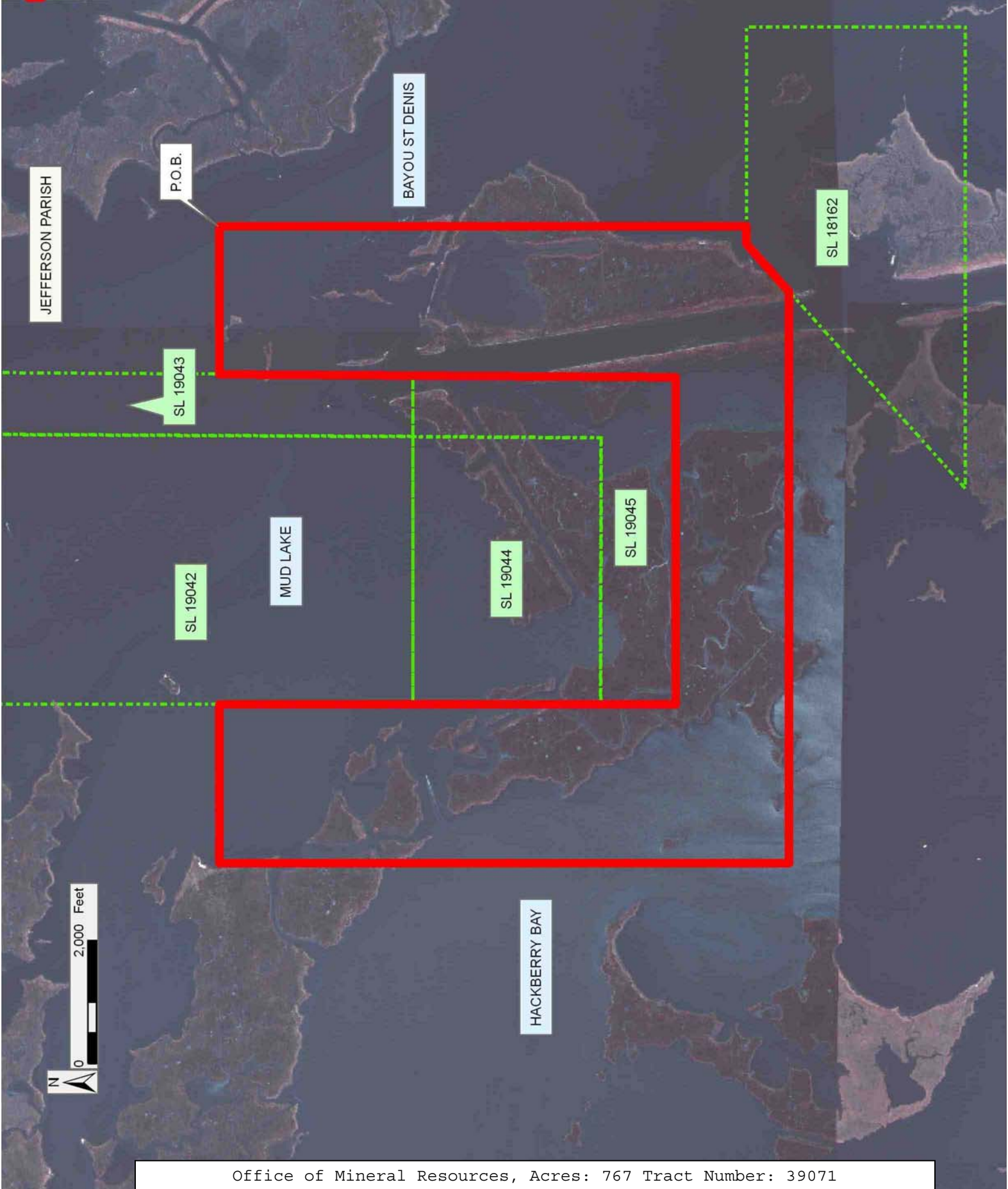
Board be subsequently modified, cancelled or abrogated due to the existence of conflicting leases, operating agreements, private claims or other future obligations or conditions which may affect all or any portion of the leased Tract, it shall not relieve the Lessee of the obligation to pay any bonus due thereon to the Louisiana State Mineral Board, nor shall the Louisiana State Mineral Board be obligated to refund any consideration paid by the Lessor prior to such modification, cancellation, or abrogation, including, but not limited to, bonuses, rentals and royalties.

NOTE: The State of Louisiana does hereby reserve, and this lease shall be subject to, the imprescriptible right of surface use in the nature of a servitude in favor of the Department of Natural Resources, including its Offices and Commissions, for the sole purpose of implementing, constructing, servicing and maintaining approved coastal zone management and/or restoration projects. Utilization of any and all rights derived under this lease by the mineral lessee, its agents, successors or assigns, shall not interfere with nor hinder the reasonable surface use by the Department of Natural Resources, its Offices or Commissions, as herein above reserved.

NOTE: The Department of Wildlife and Fisheries has designated certain areas in the coastal waters of the State of Louisiana as Oyster Seed Bed Areas. The exact location of those Seed Bed Areas must be obtained from the Department of Wildlife and Fisheries and any work done under a mineral lease from the State of Louisiana may necessarily be conducted in conformity with the rules and regulations promulgated by the said Department of Wildlife and Fisheries for Oyster Seed Bed Areas.

Applicant: ROBERT A. SCHROEDER, INC.

Bidder	Cash Payment	Price/ Acre	Rental	Oil	Gas	Other



TRACT 39072 - Plaquemines Parish, Louisiana

All of the lands now or formerly constituting the beds and bottoms of all water bodies of every nature and description the title of which vests in the State of Louisiana, together with all islands arising therein and other lands formed by accretion or by reliction, where allowed by law, excepting tax adjudicated lands, and not presently under mineral lease on May 9, 2007, situated in Plaquemines Parish, Louisiana, and more particularly described as follows: Beginning at a point having Coordinates of X = 2,435,990.00 and Y = 293,955.00; thence East 8,978.00 feet to a point having Coordinates of X = 2,444,968.00 and Y = 293,955.00; thence South 2,588.32 feet to a point on the North boundary of State Lease No. 11036, as amended, having Coordinates of X = 2,444,968.00 and Y = 291,366.68; thence along the boundary of said State Lease No. 11036 the following courses: South 83 degrees 37 minutes 00 seconds West 734.79 feet to its Northwest corner having Coordinates of X = 2,444,237.76 and Y = 291,284.98 and South 06 degrees 23 minutes 00 seconds East 991.13 feet to its Southwest corner, also being the Northwest corner of State Lease No. 12721, as amended, having Coordinates of X = 2,444,347.96 and Y = 290,300.00; thence along the boundary of said State Lease No. 12721 the following courses: South 06 degrees 23 minutes 00 seconds East 875.63 feet to its Southwest corner having Coordinates of X = 2,444,445.31 and Y = 289,429.79 and North 83 degrees 37 minutes 00 seconds East 525.95 feet to a point having Coordinates of X = 2,444,968.00 and Y = 289,488.27; thence South 4,788.27 feet to a point on the North boundary of State Lease No. 18669 having Coordinates of X = 2,444,968.00 and Y = 284,700.00; thence West 6,521.48 feet along the North boundary of said State Lease No. 18669 to its Northwest corner having Coordinates of X = 2,438,446.52 and Y = 284,700.00; thence West 2,456.52 feet to a point having Coordinates of X = 2,435,990.00 and Y = 284,700.00; thence North 9,255.00 feet to the point of beginning, containing approximately **1,244 acres**, all as more particularly outlined on a plat on file in the Office of Mineral Resources, Department of Natural Resources. All bearings, distances and coordinates are based on Louisiana Coordinate System of 1927, (North or South Zone), where applicable.

NOTE: The above description of the Tract nominated for lease has been provided and corrected, where required, exclusively by the nomination party. Any mineral lease selected from this Tract and awarded by the Louisiana State Mineral Board shall be without warranty of any kind, either express, implied, or statutory, including, but not limited to, the implied warranties of merchantability and fitness for a particular purpose. Should the mineral lease awarded by the Louisiana State Mineral Board be subsequently modified, cancelled or abrogated due to the existence of conflicting leases, operating agreements, private claims or other future obligations or conditions which may affect all or any portion of the leased Tract, it shall not relieve the Lessee of the obligation to pay any bonus due thereon to the Louisiana State Mineral Board, nor shall the Louisiana State Mineral Board be obligated to refund any consideration

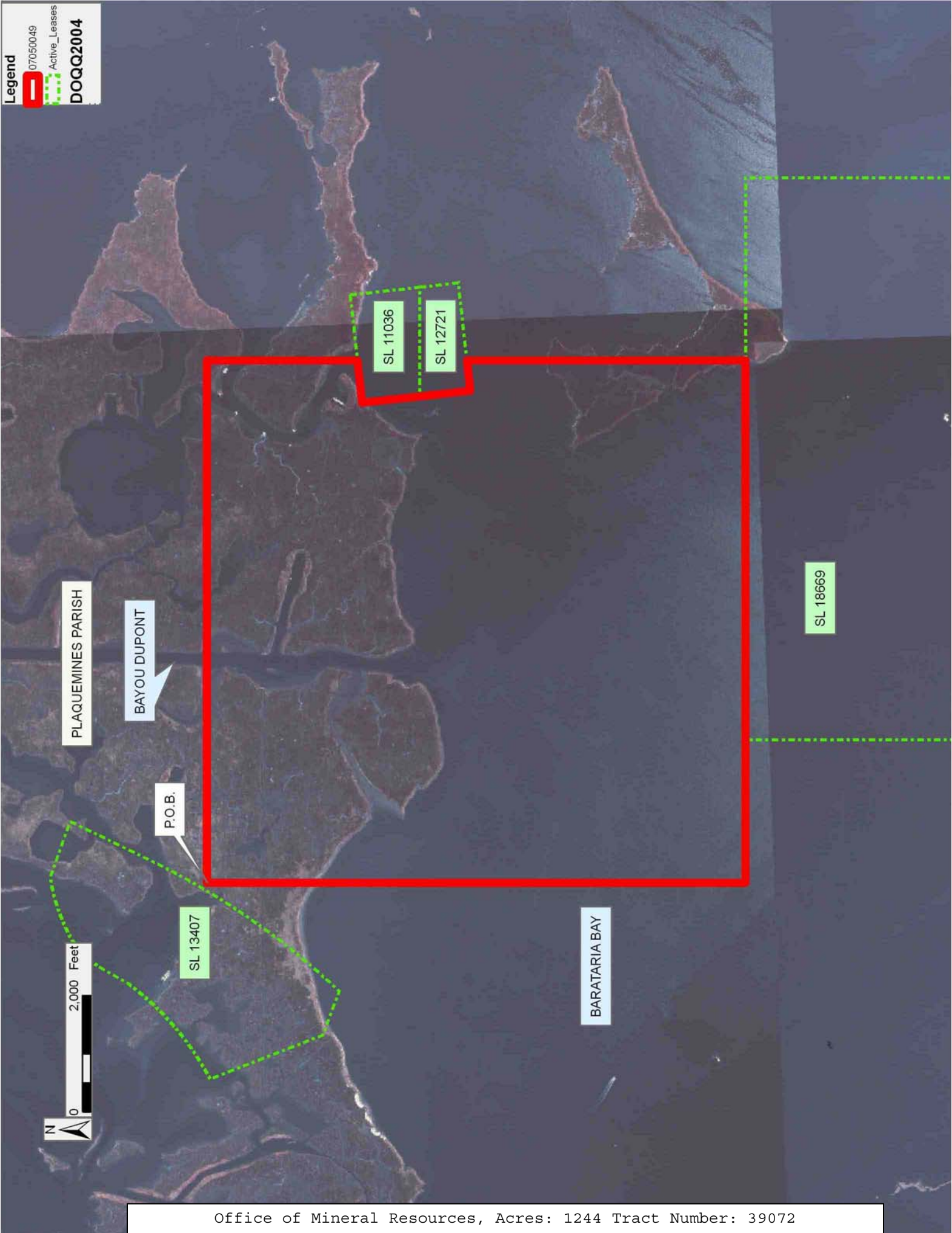
paid by the Lessor prior to such modification, cancellation, or abrogation, including, but not limited to, bonuses, rentals and royalties.

NOTE: The State of Louisiana does hereby reserve, and this lease shall be subject to, the imprescriptible right of surface use in the nature of a servitude in favor of the Department of Natural Resources, including its Offices and Commissions, for the sole purpose of implementing, constructing, servicing and maintaining approved coastal zone management and/or restoration projects. Utilization of any and all rights derived under this lease by the mineral lessee, its agents, successors or assigns, shall not interfere with nor hinder the reasonable surface use by the Department of Natural Resources, its Offices or Commissions, as herein above reserved.

NOTE: The Department of Wildlife and Fisheries has designated certain areas in the coastal waters of the State of Louisiana as Oyster Seed Bed Areas. The exact location of those Seed Bed Areas must be obtained from the Department of Wildlife and Fisheries and any work done under a mineral lease from the State of Louisiana may necessarily be conducted in conformity with the rules and regulations promulgated by the said Department of Wildlife and Fisheries for Oyster Seed Bed Areas.

Applicant: ROBERT A. SCHROEDER, INC.

Bidder	Cash Payment	Price/ Acre	Rental	Oil	Gas	Other



TRACT 39073 - Plaquemines Parish, Louisiana

All of the lands now or formerly constituting the beds and bottoms of all water bodies of every nature and description the title of which vests in the State of Louisiana, together with all islands arising therein and other lands formed by accretion or by reliction, where allowed by law, excepting tax adjudicated lands, and not presently under mineral lease on May 9, 2007, situated in Plaquemines Parish, Louisiana, and more particularly described as follows: Beginning at the Northeast corner of State Lease No. 18669 having Coordinates of X = 2,448,100.00 and Y = 284,700.00; thence East 14,168.00 feet to a point having Coordinates of X = 2,462,268.00 and Y = 284,700.00; thence South 5,485.87 feet to a point on the North boundary of State Lease No. 18671 having Coordinates of X = 2,462,268.00 and Y = 279,214.13; thence North 86 degrees 02 minutes 56 seconds West 4,007.52 feet along the North boundary of said State Lease No. 18671 it Northwest corner, also being the Easternmost Northeast corner of State Lease No. 18688 to a point having Coordinates of X = 2,458,270.00 and Y = 279,490.26; thence along the boundary of said State Lease No. 18688 the following courses: North 86 degrees 02 minutes 56 seconds West 1,422.52 feet to a point having Coordinates of X = 2,456,850.86 and Y = 279,588.28 and North 69 degrees 38 minutes 03 seconds West 3,221.23 feet to its Northernmost corner, also being a point on the East boundary of State Lease No. 18668 having Coordinates of X = 2,453,830.99 and Y = 280,709.32; thence along the boundary of said State Lease No. 18668 the following courses: North 01 degrees 10 minutes 42 seconds West 76.69 feet to a point having Coordinates of X = 2,453,829.41 and Y = 280,785.99; North 01 degrees 50 minutes 28 seconds West 2,546.53 feet to a point having Coordinates of X = 2,453,747.60 and Y = 283,331.21 and North 89 degrees 50 minutes 25 seconds West 5,647.62 feet to the Northwest corner of said State Lease No. 18668, also being a point on the East boundary of said State Lease No. 18669 having Coordinates of X = 2,448,100.00 and Y = 283,346.96; thence North 1,353.04 feet along the East boundary of said State Lease No. 18669 to the point of beginning, containing approximately **1,065 acres**, all as more particularly outlined on a plat on file in the Office of Mineral Resources, Department of Natural Resources. All bearings, distances and coordinates are based on Louisiana Coordinate System of 1927, (North or South Zone), where applicable.

NOTE: The above description of the Tract nominated for lease has been provided and corrected, where required, exclusively by the nomination party. Any mineral lease selected from this Tract and awarded by the Louisiana State Mineral Board shall be without warranty of any kind, either express, implied, or statutory, including, but not limited to, the implied warranties of merchantability and fitness for a particular purpose. Should the mineral lease awarded by the Louisiana State Mineral Board be subsequently modified, cancelled or abrogated due to the existence of conflicting leases, operating agreements, private claims or other future obligations or conditions which may affect all or any portion of the leased Tract, it shall not relieve the Lessee of the obligation to pay any bonus due thereon to the Louisiana State Mineral Board, nor shall

the Louisiana State Mineral Board be obligated to refund any consideration paid by the Lessor prior to such modification, cancellation, or abrogation, including, but not limited to, bonuses, rentals and royalties.

NOTE: The State of Louisiana does hereby reserve, and this lease shall be subject to, the imprescriptible right of surface use in the nature of a servitude in favor of the Department of Natural Resources, including its Offices and Commissions, for the sole purpose of implementing, constructing, servicing and maintaining approved coastal zone management and/or restoration projects. Utilization of any and all rights derived under this lease by the mineral lessee, its agents, successors or assigns, shall not interfere with nor hinder the reasonable surface use by the Department of Natural Resources, its Offices or Commissions, as herein above reserved.

NOTE: The Department of Wildlife and Fisheries has designated certain areas in the coastal waters of the State of Louisiana as Oyster Seed Bed Areas. The exact location of those Seed Bed Areas must be obtained from the Department of Wildlife and Fisheries and any work done under a mineral lease from the State of Louisiana may necessarily be conducted in conformity with the rules and regulations promulgated by the said Department of Wildlife and Fisheries for Oyster Seed Bed Areas.

Applicant: ROBERT A. SCHROEDER, INC.

Bidder	Cash Payment	Price/ Acre	Rental	Oil	Gas	Other

Legend
07050045
Active_Leases
DOQQ2004

PLAQUEMINES PARISH

WILKINSON BAYOU

BARATARIA BAY



P.O.B.



SL 18669

SL 18668

SL 18688

SL 18671

TRACT 39074 - Jefferson and Plaquemines Parishes, Louisiana

All of the lands now or formerly constituting the beds and bottoms of all water bodies of every nature and description the title of which vests in the State of Louisiana, together with all islands arising therein and other lands formed by accretion or by reliction, where allowed by law, excepting tax adjudicated lands, and not presently under mineral lease on May 9, 2007, situated in Jefferson and Plaquemines Parishes, Louisiana, and more particularly described as follows: Beginning at the Southeast corner of State Lease No. 15823, as amended, having Coordinates of X = 2,427,270.87 and Y = 277,580.15; thence North 295.45 feet along the East boundary of said State Lease No. 15823 to its Northeast corner, also being the Southeast corner of State Lease No. 15822, as amended, having Coordinates of X = 2,427,270.87 and Y = 277,875.60; thence North 3,966.55 feet along the East boundary of said State Lease No. 15822 to its Northeast corner, also being a point on the South boundary of State Lease No. 18162 having Coordinates of X = 2,427,270.87 and Y = 281,842.15; thence East 3,229.13 feet along the South boundary of said State Lease No. 18162 to its Southeast corner, also being the Southwest corner of State Lease No. 18163 having Coordinates of X = 2,430,500.00 and Y = 281,842.15; thence along the boundary of said State Lease No. 18163 the following courses: East 478.73 feet to a point having Coordinates of X = 2,430,978.73 and Y = 281,842.15 and North 51 degrees 34 minutes 18 seconds East 379.46 feet to its Easternmost Southeast corner, also being the Southernmost corner of State Lease No. 18046 having Coordinates of X = 2,431,276.00 and Y = 282,078.00; thence along the boundary of said State Lease No. 18046 the following courses: North 51 degrees 34 minutes 18 seconds East 3,015.12 feet to a point having Coordinates of X = 2,433,638.00 and Y = 283,952.00 and North 748.00 feet to a point having Coordinates of X = 2,433,638.00 and Y = 284,700.00; thence East 4,808.52 feet to the Northwest corner of State Lease No. 18669 having Coordinates of X = 2,438,446.52 and Y = 284,700.00; thence South 1,030.74 feet along the West boundary of said State Lease No. 18669 to the Northeast corner of State Lease No. 18689 having Coordinates of X = 2,438,446.52 and Y = 283,669.26; thence along the boundary of said State Lease No. 18689 the following courses: North 82 degrees 20 minutes 26 seconds West 2,433.82 feet to its Northwest corner having Coordinates of X = 2,436,034.42 and Y = 283,993.65; South 04 degrees 49 minutes 49 seconds West 3,208.96 feet to its Southwest corner having Coordinates of X = 2,435,764.21 and Y = 280,796.09 and South 81 degrees 18 minutes 44 seconds East 2,713.44 feet to its Southeast corner, also being a point on the West boundary of said State Lease No. 18669 having Coordinates of X = 2,438,446.52 and Y = 280,386.22; thence along the boundary of said State Lease No. 18669 the following courses: South 16.36 feet to its Westernmost Southwest corner having Coordinates of X = 2,438,446.52 and Y = 280,369.86 and South 77 degrees 29 minutes 17 seconds East 668.62 feet to the Northwest corner of State Lease No. 3035, as amended, having Coordinates of X = 2,439,099.26 and Y = 280,225.01; thence South 00 degrees 41 minutes 49 seconds East 2,349.58 feet along the West boundary of said State Lease No. 3035 to the Northeast corner of State Lease No. 14374 having Coordinates of X =

2,439,127.83 and Y = 277,875.60; thence along the boundary of said State Lease No. 14374 the following courses: West 1,002.81 feet to its Northwest corner having Coordinates of X = 2,438,125.02 and Y = 277,875.60 and South 00 degrees 38 minutes 44 seconds East 333.69 feet to the Northeast corner of State Lease No. 14534 having Coordinates of X = 2,438,128.78 and Y = 277,541.93; thence along the boundary of said State Lease No. 14534 the following courses: West 2,996.76 feet to its Northwest corner having Coordinates of X = 2,435,132.02 and Y = 277,541.93 and South 2,009.62 feet to the Northeast corner of State Lease No. 15631, as amended, having Coordinates of X = 2,435,132.02 and Y = 275,532.31; thence along the boundary of said State Lease No. 15631 the following courses: West 4,004.19 feet to its Northwest corner having Coordinates of X = 2,431,127.83 and Y = 275,532.31 and South 2,185.38 feet to a point having Coordinates of X = 2,431,127.83 and Y = 273,346.93; thence West 3,856.96 feet to a point having Coordinates of X = 2,427,270.87 and Y = 273,346.93; thence North 4,233.22 feet to the point of beginning, containing approximately **1,696 acres**, all as more particularly outlined on a plat on file in the Office of Mineral Resources, Department of Natural Resources. All bearings, distances and coordinates are based on Louisiana Coordinate System of 1927, (North or South Zone), where applicable.

NOTE: The above description of the Tract nominated for lease has been provided and corrected, where required, exclusively by the nomination party. Any mineral lease selected from this Tract and awarded by the Louisiana State Mineral Board shall be without warranty of any kind, either express, implied, or statutory, including, but not limited to, the implied warranties of merchantability and fitness for a particular purpose. Should the mineral lease awarded by the Louisiana State Mineral Board be subsequently modified, cancelled or abrogated due to the existence of conflicting leases, operating agreements, private claims or other future obligations or conditions which may affect all or any portion of the leased Tract, it shall not relieve the Lessee of the obligation to pay any bonus due thereon to the Louisiana State Mineral Board, nor shall the Louisiana State Mineral Board be obligated to refund any consideration paid by the Lessor prior to such modification, cancellation, or abrogation, including, but not limited to, bonuses, rentals and royalties.

NOTE: The State of Louisiana does hereby reserve, and this lease shall be subject to, the imprescriptible right of surface use in the nature of a servitude in favor of the Department of Natural Resources, including its Offices and Commissions, for the sole purpose of implementing, constructing, servicing and maintaining approved coastal zone management and/or restoration projects. Utilization of any and all rights derived under this lease by the mineral lessee, its agents, successors or assigns, shall not interfere with nor hinder the reasonable surface use by the Department of Natural Resources, its Offices or Commissions, as herein above reserved.

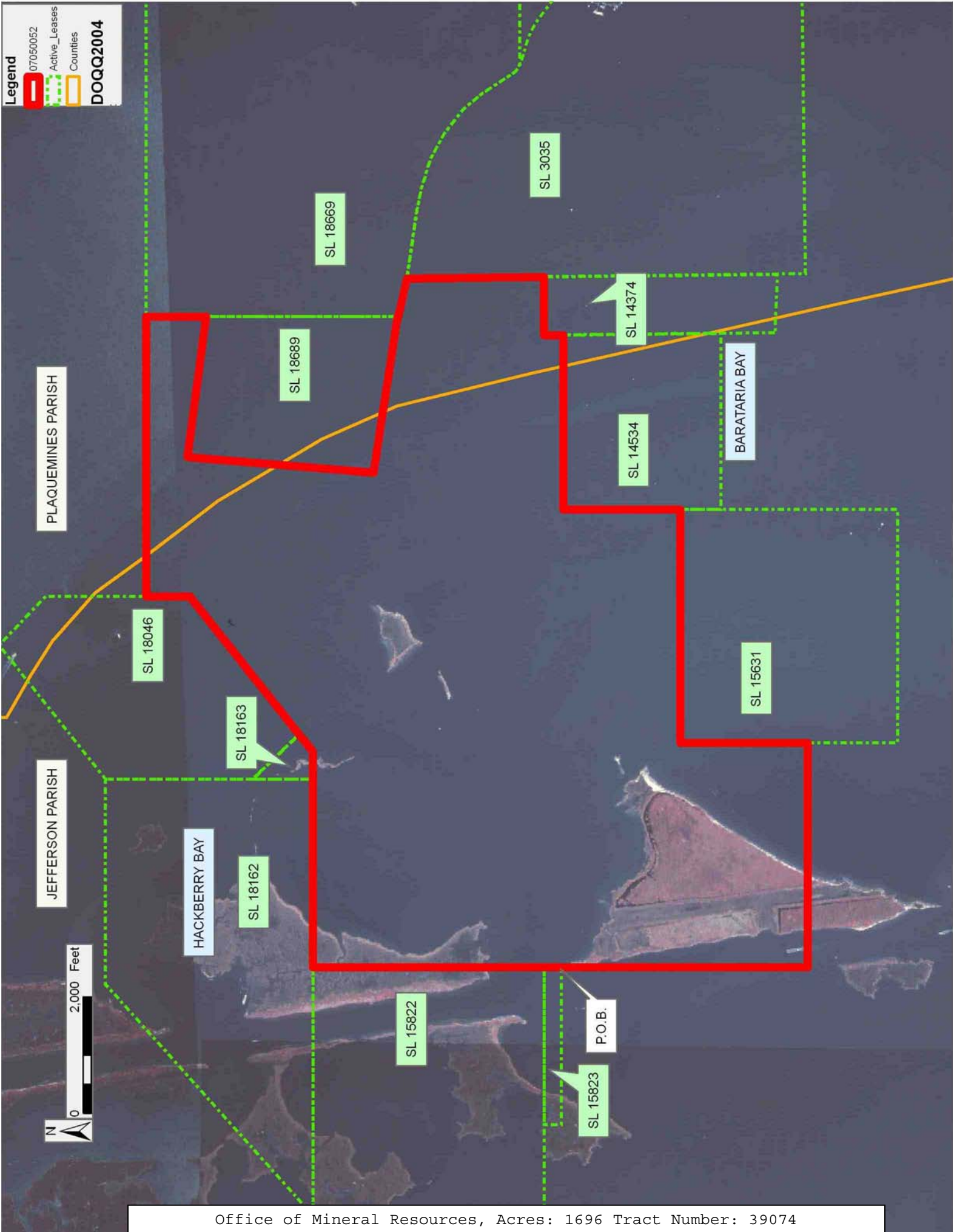
NOTE: The Department of Wildlife and Fisheries has designated certain areas in the coastal waters of the State of Louisiana as Oyster Seed Bed Areas. The exact location of those Seed Bed Areas must be obtained from the Department of Wildlife and Fisheries and any work done under a mineral lease from the State of Louisiana may necessarily be conducted in conformity with the rules and regulations promulgated by the said Department of Wildlife and Fisheries for Oyster Seed Bed Areas.

Applicant: ROBERT A. SCHROEDER, INC.

Bidder	Cash Payment	Price/ Acre	Rental	Oil	Gas	Other

Legend

- 07050052
- Active_Leases
- Counties
- DOQQ2004



TRACT 39075 - Jefferson and Lafourche Parishes, Louisiana

All of the lands now or formerly constituting the beds and bottoms of all water bodies of every nature and description the title of which vests in the State of Louisiana, together with all islands arising therein and other lands formed by accretion or by reliction, where allowed by law, excepting tax adjudicated lands, and not presently under mineral lease on May 9, 2007, situated in Jefferson and Lafourche Parishes, Louisiana, and more particularly described as follows: Beginning at the Southeast corner of State Lease No. 15823, as amended, having Coordinates of X = 2,427,270.87 and Y = 277,580.15; thence South 4,233.22 feet to a point having Coordinates of X = 2,427,270.87 and Y = 273,346.93; thence West 2,682.13 feet to a Northeast corner of State Lease No. 1217, as amended, having Coordinates of X = 2,424,588.74 and Y = 273,346.93; thence along the boundary of said State Lease No. 1217 and along the Eastern and Northern boundaries of State Lease No. 356, as amended, the following courses: South 88 degrees 57 minutes 03 seconds West 4,861.83 feet to a point having Coordinates of X = 2,419,727.72 and Y = 273,257.91; North 01 degrees 03 minutes 04 seconds West 2,661.39 feet to a point having Coordinates of X = 2,419,678.90 and Y = 275,918.85; South 88 degrees 57 minutes 24 seconds West 2,661.24 feet to a point having Coordinates of X = 2,417,018.10 and Y = 275,870.39 and North 01 degrees 03 minutes 08 seconds West 5,243.43 feet to the Northernmost Northeast corner of said State Lease No. 1217 having Coordinates of X = 2,416,921.81 and Y = 281,112.93; thence North 3,587.07 feet to a point having Coordinates of X = 2,416,921.81 and Y = 284,700.00; thence East 9,281.85 feet to a point on the Western boundary of State Lease No. 18162 having Coordinates of X = 2,426,203.66 and Y = 284,700.00; thence South 48 degrees 11 minutes 10 seconds West 4,286.48 feet along the Western boundary of said State Lease No. 18162 to its Southwest corner, also being the Northwest corner of State Lease No. 15822, as amended, having Coordinates of X = 2,423,008.89 and Y = 281,842.15; thence South 3,966.55 feet along the West boundary of said State Lease No. 15822 to its Southwest corner, also being the Northwest corner of State Lease No. 16338, as amended, having Coordinates of X = 2,423,008.89 and Y = 277,875.60; thence along the boundary of said State Lease No. 16338 the following courses: South 295.44 feet to its Southwest corner having Coordinates of X = 2,423,008.89 and Y = 277,580.16 and East 1,561.98 feet to its Southeast corner, also being a point on the West boundary of said State Lease No. 15823 having Coordinates of X = 2,424,570.87 and Y = 277,580.16; thence along the boundary of said State Lease No. 15823 the following courses: South 00 degrees 48 minutes 29 seconds West 0.01 feet to its Southwest corner having Coordinates of X = 2,424,570.87 and Y = 277,580.15 and East 2,700.00 feet to the point of beginning, containing approximately **1,813 acres**, all as more particularly outlined on a plat on file in the Office of Mineral Resources, Department of Natural Resources. All bearings, distances and coordinates are based on Louisiana Coordinate System of 1927, (North or South Zone), where applicable.

NOTE: The above description of the Tract nominated for lease has been provided and corrected, where required, exclusively by the nomination party. Any mineral lease selected from this Tract and awarded by the Louisiana State Mineral Board shall be without warranty of any kind, either express, implied, or statutory, including, but not limited to, the implied warranties of merchantability and fitness for a particular purpose. Should the mineral lease awarded by the Louisiana State Mineral Board be subsequently modified, cancelled or abrogated due to the existence of conflicting leases, operating agreements, private claims or other future obligations or conditions which may affect all or any portion of the leased Tract, it shall not relieve the Lessee of the obligation to pay any bonus due thereon to the Louisiana State Mineral Board, nor shall the Louisiana State Mineral Board be obligated to refund any consideration paid by the Lessor prior to such modification, cancellation, or abrogation, including, but not limited to, bonuses, rentals and royalties.

NOTE: The State of Louisiana does hereby reserve, and this lease shall be subject to, the imprescriptible right of surface use in the nature of a servitude in favor of the Department of Natural Resources, including its Offices and Commissions, for the sole purpose of implementing, constructing, servicing and maintaining approved coastal zone management and/or restoration projects. Utilization of any and all rights derived under this lease by the mineral lessee, its agents, successors or assigns, shall not interfere with nor hinder the reasonable surface use by the Department of Natural Resources, its Offices or Commissions, as herein above reserved.

NOTE: The Department of Wildlife and Fisheries has designated certain areas in the coastal waters of the State of Louisiana as Oyster Seed Bed Areas. The exact location of those Seed Bed Areas must be obtained from the Department of Wildlife and Fisheries and any work done under a mineral lease from the State of Louisiana may necessarily be conducted in conformity with the rules and regulations promulgated by the said Department of Wildlife and Fisheries for Oyster Seed Bed Areas.

Applicant: ROBERT A. SCHROEDER, INC.

Bidder	Cash Payment	Price/ Acre	Rental	Oil	Gas	Other

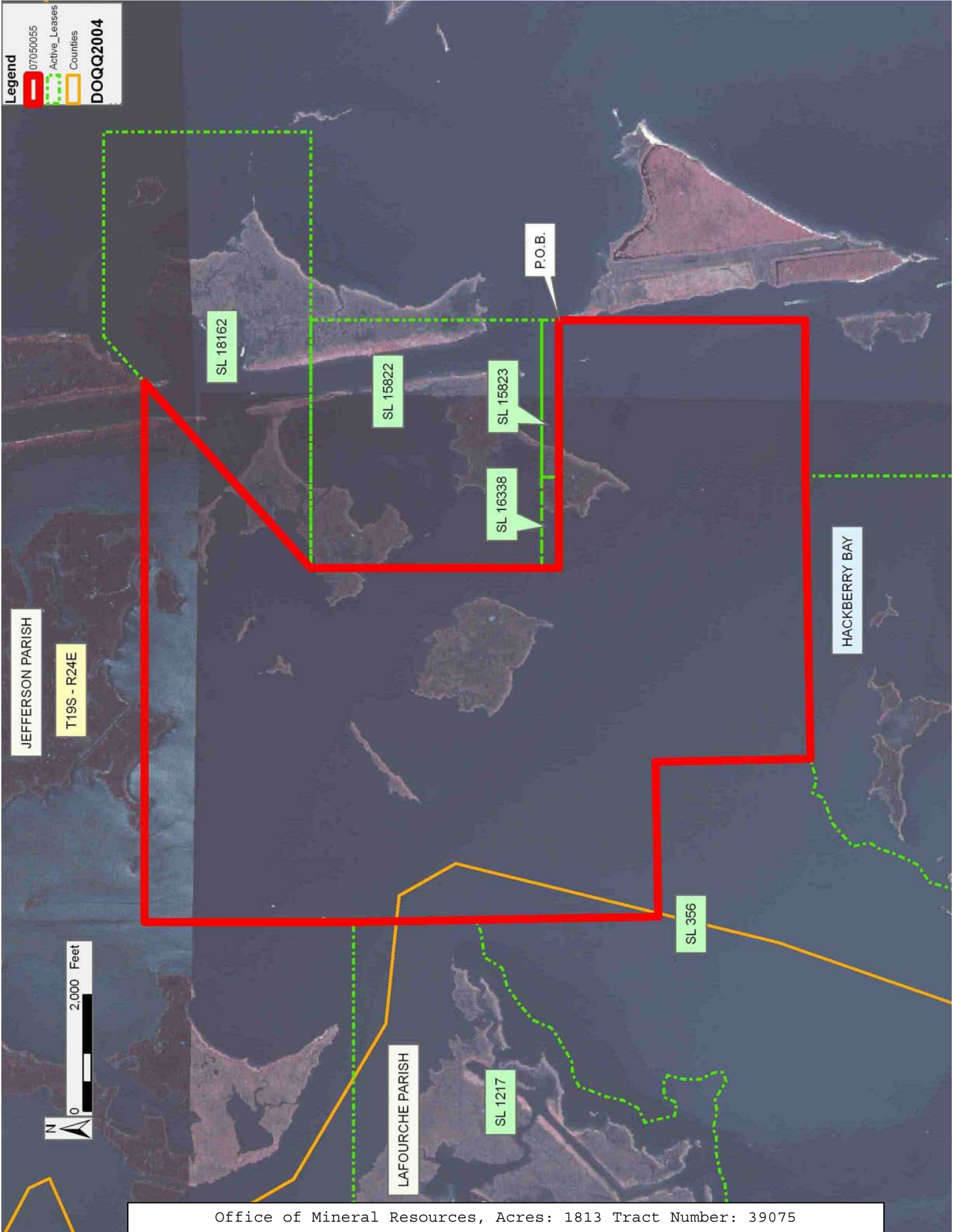
Legend

 07050055

 Active_Leases

 Counties

DOQQ2004



TRACT 39076 - Terrebonne Parish, Louisiana

All of the lands now or formerly constituting the beds and bottoms of all water bodies of every nature and description the title of which vests in the State of Louisiana, together with all islands arising therein and other lands formed by accretion or by reliction, where allowed by law, excepting tax adjudicated lands, and not presently under mineral lease on May 9, 2007, situated in Terrebonne Parish, Louisiana, and more particularly described as follows: Beginning at a point located on the Southern boundary of the Northern portion of State Lease No. 188, as amended, having Coordinates of X = 2,274,653.94 and Y = 153,458.16; thence along the boundary of said State Lease No. 188 the following courses: East 2,951.56 feet to a point having Coordinates of X = 2,277,605.50 and Y = 153,458.16 and South 1,590.00 feet to a point having Coordinates of X = 2,277,605.50 and Y = 151,868.16; thence South 6,366.02 feet to a point having Coordinates of X = 2,277,605.50 and Y = 145,502.14; thence Northwesterly along an arc to the right having a radius of 15,840.00 feet and a center at X = 2,276,860.56 and Y = 161,324.61 to the Southeast corner of the Southwest portion of said State Lease No. 188 having Coordinates of X = 2,275,075.04 and Y = 145,585.57; thence North 3,120.00 feet along the East boundary of the Southwest portion of said State Lease No. 188 to its Northeast corner having Coordinates of X = 2,275,075.04 and Y = 148,705.57; thence North 1,449.98 feet to a point having Coordinates of X = 2,275,075.04 and Y = 150,155.55; thence West 421.10 feet to a point having Coordinates of X = 2,274,653.94 and Y = 150,155.55; thence North 3,302.61 feet to the point of beginning, containing approximately **481 acres**, all as more particularly outlined on a plat on file in the Office of Mineral Resources, Department of Natural Resources. All bearings, distances and coordinates are based on Louisiana Coordinate System of 1927, (North or South Zone), where applicable.

NOTE: The above description of the Tract nominated for lease has been provided and corrected, where required, exclusively by the nomination party. Any mineral lease selected from this Tract and awarded by the Louisiana State Mineral Board shall be without warranty of any kind, either express, implied, or statutory, including, but not limited to, the implied warranties of merchantability and fitness for a particular purpose. Should the mineral lease awarded by the Louisiana State Mineral Board be subsequently modified, cancelled or abrogated due to the existence of conflicting leases, operating agreements, private claims or other future obligations or conditions which may affect all or any portion of the leased Tract, it shall not relieve the Lessee of the obligation to pay any bonus due thereon to the Louisiana State Mineral Board, nor shall the Louisiana State Mineral Board be obligated to refund any consideration paid by the Lessor prior to such modification, cancellation, or abrogation, including, but not limited to, bonuses, rentals and royalties.

NOTE: The State of Louisiana does hereby reserve, and this lease shall be subject to, the imprescriptible right of surface use in the nature of a servitude in favor of the Department of Natural Resources, including its

Offices and Commissions, for the sole purpose of implementing, constructing, servicing and maintaining approved coastal zone management and/or restoration projects. Utilization of any and all rights derived under this lease by the mineral lessee, its agents, successors or assigns, shall not interfere with nor hinder the reasonable surface use by the Department of Natural Resources, its Offices or Commissions, as herein above reserved.

NOTE: The Department of Wildlife and Fisheries has designated certain areas in the coastal waters of the State of Louisiana as Oyster Seed Bed Areas. The exact location of those Seed Bed Areas must be obtained from the Department of Wildlife and Fisheries and any work done under a mineral lease from the State of Louisiana may necessarily be conducted in conformity with the rules and regulations promulgated by the said Department of Wildlife and Fisheries for Oyster Seed Bed Areas.

Applicant: THEOPHILUS OIL, GAS & LAND SERVICES, LLC

Bidder	Cash Payment	Price/ Acre	Rental	Oil	Gas	Other

Legend

07050040

Active_Leases

Counties

DOQQ2004

