

TRACT 39037 - St. Mary Parish, Louisiana

All of the lands now or formerly constituting the beds and bottoms of all water bodies of every nature and description the title of which vests in the State of Louisiana, together with all islands arising therein and other lands formed by accretion or by reliction, where allowed by law, excepting tax adjudicated lands, and not presently under mineral lease on May 9, 2007, situated in St. Mary Parish, Louisiana, and more particularly described as follows: Beginning at a point having Coordinates of X = 1,957,577.89 and Y = 340,015.45; thence North 5,284.55 feet to a point having Coordinates of X = 1,957,577.89 and Y = 345,300.00; thence East 18,480.00 feet to a point having Coordinates of X = 1,976,057.89 and Y = 345,300.00; thence South 00 degrees 00 minutes 31 seconds West 5,116.70 feet to a point having Coordinates of X = 1,976,057.13 and Y = 340,183.30; thence South 89 degrees 28 minutes 47 seconds West 18,480.00 feet to the Point of Beginning, containing approximately **713 acres**, all as more particularly outlined on a plat on file in the Office of Mineral Resources, Department of Natural Resources. All bearings, distances and coordinates are based on Louisiana Coordinate System of 1927, (North or South Zone), where applicable.

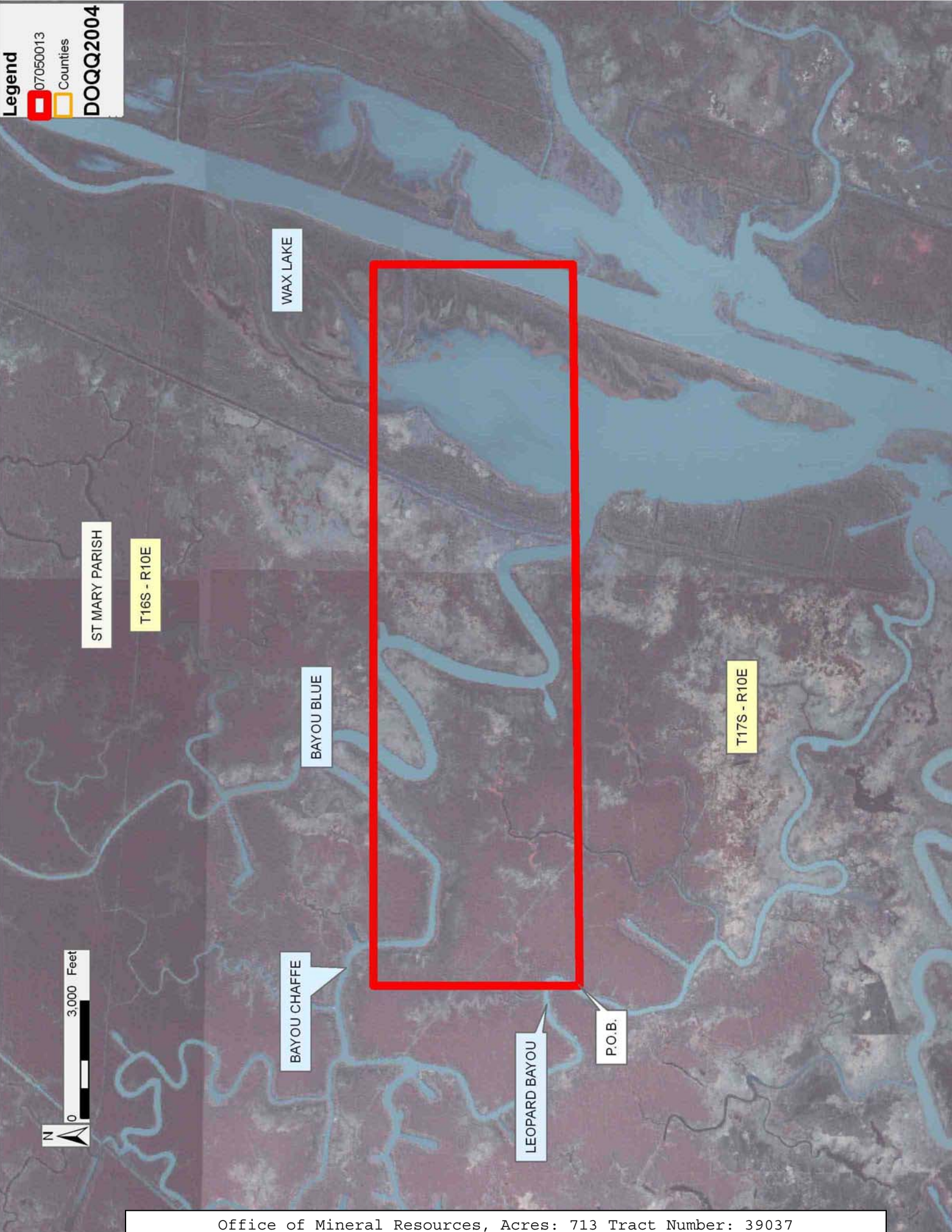
NOTE: The above description of the Tract nominated for lease has been provided and corrected, where required, exclusively by the nomination party. Any mineral lease selected from this Tract and awarded by the Louisiana State Mineral Board shall be without warranty of any kind, either express, implied, or statutory, including, but not limited to, the implied warranties of merchantability and fitness for a particular purpose. Should the mineral lease awarded by the Louisiana State Mineral Board be subsequently modified, cancelled or abrogated due to the existence of conflicting leases, operating agreements, private claims or other future obligations or conditions which may affect all or any portion of the leased Tract, it shall not relieve the Lessee of the obligation to pay any bonus due thereon to the Louisiana State Mineral Board, nor shall the Louisiana State Mineral Board be obligated to refund any consideration paid by the Lessor prior to such modification, cancellation, or abrogation, including, but not limited to, bonuses, rentals and royalties.

NOTE: The State of Louisiana does hereby reserve, and this lease shall be subject to, the imprescriptible right of surface use in the nature of a servitude in favor of the Department of Natural Resources, including its Offices and Commissions, for the sole purpose of implementing, constructing, servicing and maintaining approved coastal zone management and/or restoration projects. Utilization of any and all rights derived under this lease by the mineral lessee, its agents, successors or assigns, shall not interfere with nor hinder the reasonable surface use by the Department of Natural Resources, its Offices or Commissions, as herein above reserved.

Bidder	Cash Payment	Price/Acre	Rental	Oil	Gas	Other
--------	--------------	------------	--------	-----	-----	-------

Applicant: FLEETWOOD RESOURCES, INC.

Legend
07050013
Countries
DOQQ2004



TRACT 39038 - St. Mary Parish, Louisiana

All of the lands now or formerly constituting the beds and bottoms of all water bodies of every nature and description the title of which vests in the State of Louisiana, together with all islands arising therein and other lands formed by accretion or by reliction, where allowed by law, excepting tax adjudicated lands, and not presently under mineral lease on May 9, 2007, situated in St. Mary Parish, Louisiana, and more particularly described as follows: Beginning at a point having Coordinates of X = 1,957,577.89 and Y = 340,015.45; thence Westerly approximately 4,852 feet to the Southeast corner of Operating Agreement No. 241; thence Northerly approximately 5,311 feet along the East boundary of said Operating Agreement No. 241 to a point of intersection with an East-West line having a Coordinate of Y = 345,300.00; thence East approximately 4,818 feet to a point having Coordinates of X = 1,957,577.89 and Y = 345,300.00; thence South 5,284.55 feet to the point of beginning, **LESS AND EXCEPT** that portion, if any, of Operating Agreement No. 241 that may lie within the above described tract, containing approximately **45 acres**, all as more particularly outlined on a plat on file in the Office of Mineral Resources, Department of Natural Resources. All bearings, distances and coordinates are based on Louisiana Coordinate System of 1927, (North or South Zone), where applicable.

NOTE: The above description of the Tract nominated for lease has been provided and corrected, where required, exclusively by the nomination party. Any mineral lease selected from this Tract and awarded by the Louisiana State Mineral Board shall be without warranty of any kind, either express, implied, or statutory, including, but not limited to, the implied warranties of merchantability and fitness for a particular purpose. Should the mineral lease awarded by the Louisiana State Mineral Board be subsequently modified, cancelled or abrogated due to the existence of conflicting leases, operating agreements, private claims or other future obligations or conditions which may affect all or any portion of the leased Tract, it shall not relieve the Lessee of the obligation to pay any bonus due thereon to the Louisiana State Mineral Board, nor shall the Louisiana State Mineral Board be obligated to refund any consideration paid by the Lessor prior to such modification, cancellation, or abrogation, including, but not limited to, bonuses, rentals and royalties.

NOTE: The State of Louisiana does hereby reserve, and this lease shall be subject to, the imprescriptible right of surface use in the nature of a servitude in favor of the Department of Natural Resources, including its Offices and Commissions, for the sole purpose of implementing, constructing, servicing and maintaining approved coastal zone management and/or restoration projects. Utilization of any and all rights derived under this lease by the mineral lessee, its agents, successors or assigns, shall not interfere with nor hinder the reasonable surface use by the Department of Natural Resources, its Offices or Commissions, as herein above reserved.

Applicant: FLEETWOOD RESOURCES, INC.

Bidder	Cash Payment	Price/Acre	Rental	Oil	Gas	Other

Legend

07050012

Active_Leases

DOQQ2004

ST MARY PARISH

T16S - R10E

P.O.B.

LEOPARD BAYOU

T17S - R10E

AO 0241

SL 329

2,000 Feet



TRACT 39039 - Jefferson Parish, Louisiana

All of the lands now or formerly constituting the beds and bottoms of all water bodies of every nature and description the title of which vests in the State of Louisiana, together with all islands arising therein and other lands formed by accretion or by reliction, where allowed by law, excepting tax adjudicated lands, and not presently under mineral lease on May 9, 2007, situated in Jefferson Parish, Louisiana, and more particularly described as follows: Beginning at a point having Coordinates of X = 2,384,079.88 and Y = 334,845.72; thence South 00 degrees 28 minutes 55 seconds East 5,175.90 feet to a point having Coordinates of X = 2,384,123.42 and Y = 329,670.00; thence West 2,803.42 feet to the Northeast corner of State Lease No. 1972, as amended, having Coordinates of X = 2,381,320.00 and Y = 329,670.00; thence Westerly along the North boundary of said State Lease No. 1972 to a point of intersection with the boundary of State Lease No. 2561; thence Northeasterly, Northerly and Northwesterly along the Eastern boundary of said State Lease No. 2561 to its Northeast corner; thence Easterly approximately 10,372 feet to the point of beginning, **LESS AND EXCEPT** any portion of State Lease No. 2561, as amended, and State Lease No. 1972, as amended, which may lie within the above described tract, containing approximately **423 acres**, all as more particularly outlined on a plat on file in the Office of Mineral Resources, Department of Natural Resources. All bearings, distances and coordinates are based on Louisiana Coordinate System of 1927, (North or South Zone), where applicable.

NOTE: The above description of the Tract nominated for lease has been provided and corrected, where required, exclusively by the nomination party. Any mineral lease selected from this Tract and awarded by the Louisiana State Mineral Board shall be without warranty of any kind, either express, implied, or statutory, including, but not limited to, the implied warranties of merchantability and fitness for a particular purpose. Should the mineral lease awarded by the Louisiana State Mineral Board be subsequently modified, cancelled or abrogated due to the existence of conflicting leases, operating agreements, private claims or other future obligations or conditions which may affect all or any portion of the leased Tract, it shall not relieve the Lessee of the obligation to pay any bonus due thereon to the Louisiana State Mineral Board, nor shall the Louisiana State Mineral Board be obligated to refund any consideration paid by the Lessor prior to such modification, cancellation, or abrogation, including, but not limited to, bonuses, rentals and royalties.

NOTE: The State of Louisiana does hereby reserve, and this lease shall be subject to, the imprescriptible right of surface use in the nature of a servitude in favor of the Department of Natural Resources, including its Offices and Commissions, for the sole purpose of implementing, constructing, servicing and maintaining approved coastal zone management and/or restoration projects. Utilization of any and all rights derived under this lease by the mineral lessee, its agents, successors or assigns, shall not interfere with nor hinder the reasonable surface use by the

Department of Natural Resources, its Offices or Commissions, as herein above reserved.

NOTE: The Department of Wildlife and Fisheries has designated certain areas in the coastal waters of the State of Louisiana as Oyster Seed Bed Areas. The exact location of those Seed Bed Areas must be obtained from the Department of Wildlife and Fisheries and any work done under a mineral lease from the State of Louisiana may necessarily be conducted in conformity with the rules and regulations promulgated by the said Department of Wildlife and Fisheries for Oyster Seed Bed Areas.

Applicant: ALJ ENERGY

Bidder	Cash Payment	Price/Acre	Rental	Oil	Gas	Other

Legend
07050002
Active_Leases
DOQQ2004

JEFFERSON PARISH

BAYOU RIGOLETTES

P.O.B.



SL 2561

SL 2561

SL 1972

SL 1972

TRACT 39040 - St. Mary Parish, Louisiana

All of the lands now or formerly constituting the beds and bottoms of all water bodies of every nature and description the title of which vests in the State of Louisiana, together with all islands arising therein and other lands formed by accretion or by reliction, where allowed by law, excepting tax adjudicated lands, and not presently under mineral lease on May 9, 2007, situated in St. Mary Parish, Louisiana, and more particularly described as follows: Beginning at a point having Coordinates of X = 1,970,969.52 and Y = 334,930.97; thence North 00 degrees 23 minutes 04 seconds East 5,206.55 feet to a point having Coordinates of X = 1,971,004.46 and Y = 340,137.40; thence North 89 degrees 28 minutes 47 seconds East 5,107.75 feet to a point having Coordinates of X = 1,976,112.00 and Y = 340,183.80; thence South 00 degrees 16 minutes 38 seconds East approximately 5,195 feet to a point on the Northern boundary of State Lease No. 3586, as amended; thence Westerly approximately 1,102 feet along the Northern boundary of State Lease No. 3586, as amended to its most Northerly Northwest corner; thence Westerly approximately 4,067 feet to the Point of Beginning, **LESS AND EXCEPT** that portion, if any, of State Lease No. 3586, as amended, that may fall within the above described tract, containing approximately **568 Gross acres / 85.2 Net acres**, all as more particularly outlined on a plat on file in the Office of Mineral Resources, Department of Natural Resources. All bearings, distances and coordinates are based on Louisiana Coordinate System of 1927, (North or South Zone), where applicable.

NOTE: The above description of the Tract nominated for lease has been provided and corrected, where required, exclusively by the nomination party. Any mineral lease selected from this Tract and awarded by the Louisiana State Mineral Board shall be without warranty of any kind, either express, implied, or statutory, including, but not limited to, the implied warranties of merchantability and fitness for a particular purpose. Should the mineral lease awarded by the Louisiana State Mineral Board be subsequently modified, cancelled or abrogated due to the existence of conflicting leases, operating agreements, private claims or other future obligations or conditions which may affect all or any portion of the leased Tract, it shall not relieve the Lessee of the obligation to pay any bonus due thereon to the Louisiana State Mineral Board, nor shall the Louisiana State Mineral Board be obligated to refund any consideration paid by the Lessor prior to such modification, cancellation, or abrogation, including, but not limited to, bonuses, rentals and royalties.

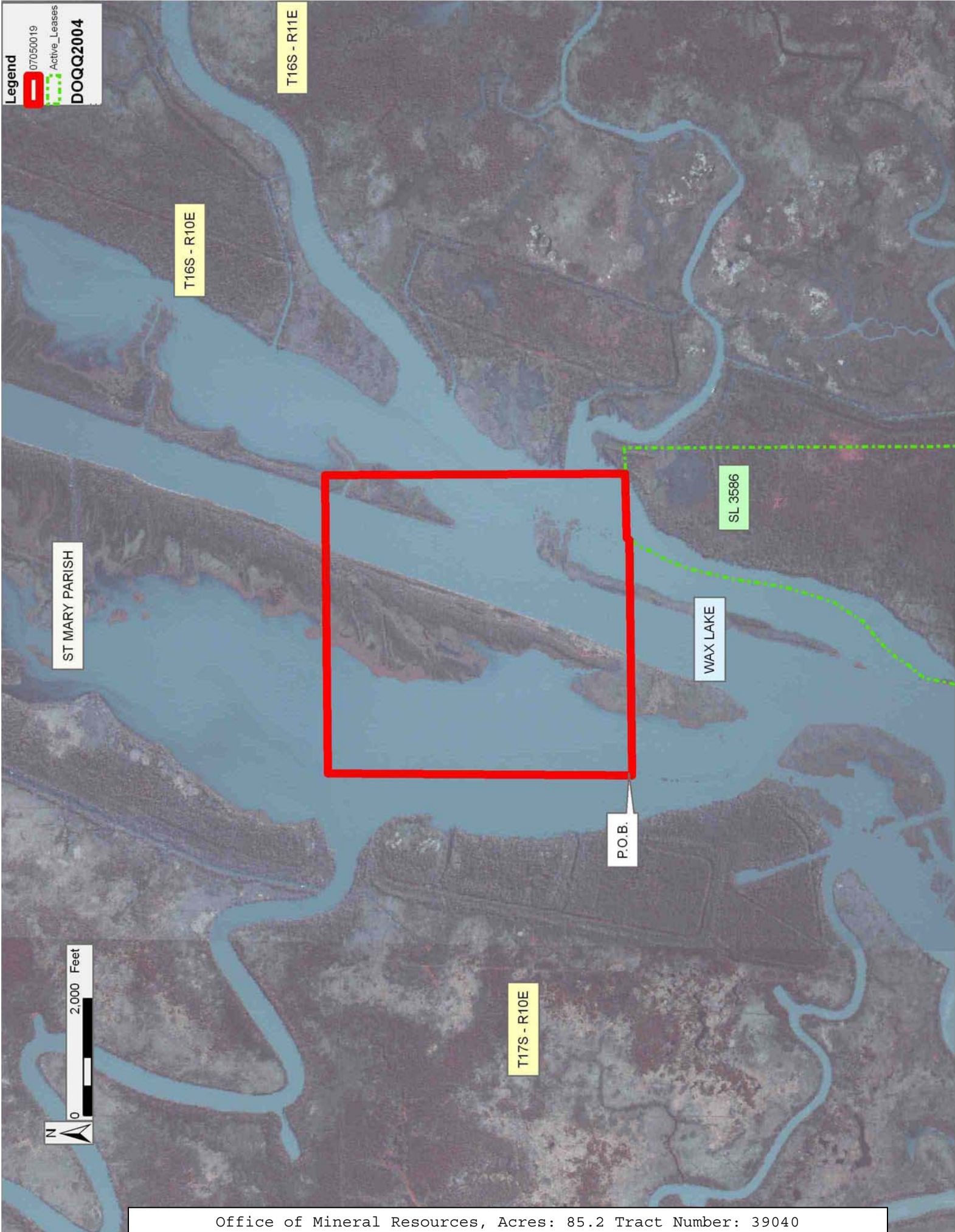
NOTE: The State of Louisiana does hereby reserve, and this lease shall be subject to, the imprescriptible right of surface use in the nature of a servitude in favor of the Department of Natural Resources, including its Offices and Commissions, for the sole purpose of implementing, constructing, servicing and maintaining approved coastal zone management and/or restoration projects. Utilization of any and all rights derived under this lease by the mineral lessee, its agents, successors or assigns, shall not interfere with nor hinder the reasonable surface use by the

Department of Natural Resources, its Offices or Commissions, as herein above reserved.

Applicant: FLEETWOOD RESOURCES, INC.

Bidder	Cash Payment	Price/Acre	Rental	Oil	Gas	Other

Legend
07050019
Active_Leases
DOQQ2004



TRACT 39041 - Jefferson and Lafourche Parishes, Louisiana

All of the lands now or formerly constituting the beds and bottoms of all water bodies of every nature and description the title of which vests in the State of Louisiana, together with all islands arising therein and other lands formed by accretion or by reliction, where allowed by law, excepting tax adjudicated lands, and not presently under mineral lease on May 9, 2007, situated in Jefferson and Lafourche Parishes, Louisiana, and more particularly described as follows: Beginning at a point having Coordinates of X = 2,357,451.08 and Y = 324,209.79; thence North 10,441.80 feet to a point having Coordinates of X = 2,357,451.08 and Y = 334,651.59; thence Easterly approximately 5,219 feet to the Northwest corner of State Lease No. 2561, as amended; thence along the boundary of said State Lease No. 2561 the following courses: Southerly to the North shoreline of Little Lake and Northeasterly along the North shoreline of said Little Lake to a point of intersection with the West portion of State Lease No. 2381, as amended; thence along the boundary of the West portion of said State Lease No. 2381 the following courses: South 59 degrees 25 minutes 09 seconds East 264.37 feet and North 19 degrees 05 minutes 51 seconds East 103.92 feet to a point of intersection with said State Lease No. 2561; thence Easterly along the boundary of said State Lease No. 2561 to a point of intersection with the East portion of said State Lease No. 2381; thence along the boundary of the East portion of said State Lease No. 2381 the following courses: South 69 degrees 15 minutes 36 seconds East 109.28 feet; South 75 degrees 22 minutes 23 seconds East 237.68 feet; South 83 degrees 46 minutes 02 seconds East 184.29 feet; South 00 degrees 51 minutes 07 seconds East 195.02 feet; South 400.00 feet; East 1,069.80 feet; South 46 degrees 05 minutes 00 second East 269.45 feet and South 67 degrees 24 minutes 31 seconds East 61.95 feet to a point of intersection with said State Lease No. 2561; thence Southerly and Easterly along the boundary of said State Lease No. 2561 to its point of intersection with State Lease No. 1972, as amended; thence Southerly, Westerly, Southwesterly, Easterly and Southeasterly along the boundary of said State Lease No. 1972 to its point of intersection with an East-West line having a Coordinate of Y = 324,209.79; thence West approximately 14,888 feet to the point of beginning, **LESS AND EXCEPT** any portion of State Lease No. 2561 as amended, State Lease No. 2381 as amended, and State Lease No. 1972 as amended, which may lie within the above described tract, containing approximately **1,607 acres**, all as more particularly outlined on a plat on file in the Office of Mineral Resources, Department of Natural Resources. All bearings, distances and coordinates are based on Louisiana Coordinate System of 1927, (North or South Zone), where applicable.

NOTE: The above description of the Tract nominated for lease has been provided and corrected, where required, exclusively by the nomination party. Any mineral lease selected from this Tract and awarded by the Louisiana State Mineral Board shall be without warranty of any kind, either express, implied, or statutory, including, but not limited to, the implied warranties of merchantability and fitness for a particular purpose. Should the mineral lease awarded by the Louisiana State Mineral

Board be subsequently modified, cancelled or abrogated due to the existence of conflicting leases, operating agreements, private claims or other future obligations or conditions which may affect all or any portion of the leased Tract, it shall not relieve the Lessee of the obligation to pay any bonus due thereon to the Louisiana State Mineral Board, nor shall the Louisiana State Mineral Board be obligated to refund any consideration paid by the Lessor prior to such modification, cancellation, or abrogation, including, but not limited to, bonuses, rentals and royalties.

NOTE: The State of Louisiana does hereby reserve, and this lease shall be subject to, the imprescriptible right of surface use in the nature of a servitude in favor of the Department of Natural Resources, including its Offices and Commissions, for the sole purpose of implementing, constructing, servicing and maintaining approved coastal zone management and/or restoration projects. Utilization of any and all rights derived under this lease by the mineral lessee, its agents, successors or assigns, shall not interfere with nor hinder the reasonable surface use by the Department of Natural Resources, its Offices or Commissions, as herein above reserved.

NOTE: The Department of Wildlife and Fisheries has designated certain areas in the coastal waters of the State of Louisiana as Oyster Seed Bed Areas. The exact location of those Seed Bed Areas must be obtained from the Department of Wildlife and Fisheries and any work done under a mineral lease from the State of Louisiana may necessarily be conducted in conformity with the rules and regulations promulgated by the said Department of Wildlife and Fisheries for Oyster Seed Bed Areas.

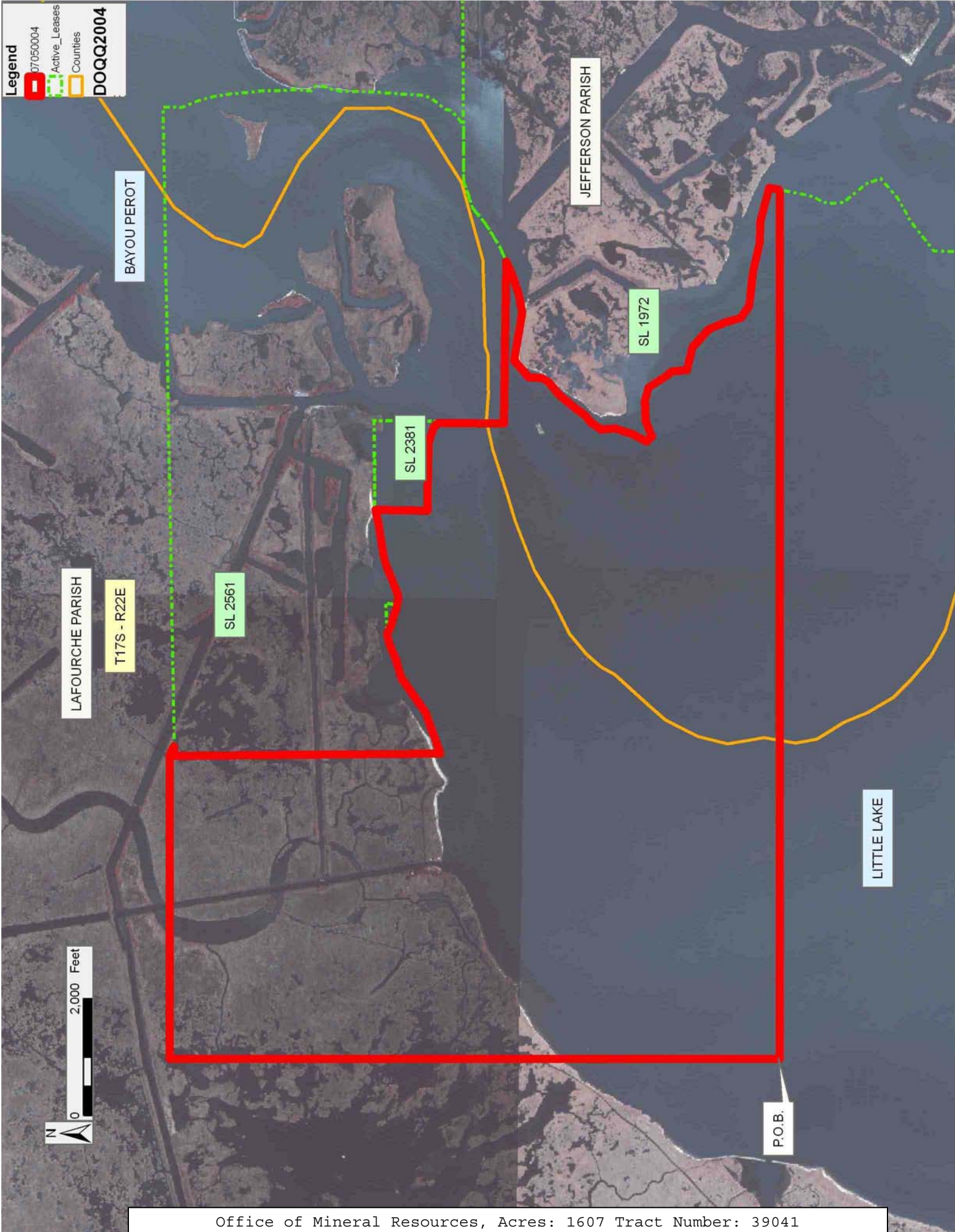
Applicant: ALJ ENERGY

Bidder	Cash Payment	Price/Acre	Rental	Oil	Gas	Other

Legend

- 07050004
- Active_Leases
- Counties

DOQQ2004



TRACT 39042 - St. Mary Parish, Louisiana

All of the lands now or formerly constituting the beds and bottoms of all water bodies of every nature and description the title of which vests in the State of Louisiana, together with all islands arising therein and other lands formed by accretion or by reliction, where allowed by law, excepting tax adjudicated lands, and not presently under mineral lease on May 9, 2007, situated in St. Mary Parish, Louisiana, and more particularly described as follows: Beginning at a point having Coordinates of X = 1,957,577.89 and Y = 340,015.45; thence North 89 degrees 28 minutes 47 seconds East 7,974.42 feet to a point having Coordinates of X = 1,965,551.98 and Y = 340,087.88; thence South 00 degrees 12 minutes 56 seconds West 5,170.04 feet to a point having Coordinates of X = 1,965,532.54 and Y = 334,917.88; thence South 00 degrees 35 minutes 32 seconds West 5,272.40 feet to a point having Coordinates of X = 1,965,478.05 and Y = 329,645.76; thence South 89 degrees 34 minutes 57 seconds West 5,287.91 feet to a point having Coordinates of X = 1,960,190.28 and Y = 329,607.23; thence South 00 degrees 03 minutes 39 seconds East 4,502.24 feet to a point on the North boundary of State Lease No. 18339 having Coordinates of X = 1,960,195.07 and Y = 325,105.00; thence West 2,659.09 feet along the North boundary of said State Lease No. 18339 to a point having Coordinates of X = 1,957,535.97 and Y = 325,105.00; thence North 00 degrees 09 minutes 40 seconds East 14,910.51 feet to the point of beginning, containing approximately 148 gross acres and **22.2 net acres**, all as more particularly outlined on a plat on file in the Office of Mineral Resources, Department of Natural Resources. All bearings, distances and coordinates are based on Louisiana Coordinate System of 1927, (North or South Zone), where applicable.

NOTE: The above description of the Tract nominated for lease has been provided and corrected, where required, exclusively by the nomination party. Any mineral lease selected from this Tract and awarded by the Louisiana State Mineral Board shall be without warranty of any kind, either express, implied, or statutory, including, but not limited to, the implied warranties of merchantability and fitness for a particular purpose. Should the mineral lease awarded by the Louisiana State Mineral Board be subsequently modified, cancelled or abrogated due to the existence of conflicting leases, operating agreements, private claims or other future obligations or conditions which may affect all or any portion of the leased Tract, it shall not relieve the Lessee of the obligation to pay any bonus due thereon to the Louisiana State Mineral Board, nor shall the Louisiana State Mineral Board be obligated to refund any consideration paid by the Lessor prior to such modification, cancellation, or abrogation, including, but not limited to, bonuses, rentals and royalties.

NOTE: The State of Louisiana does hereby reserve, and this lease shall be subject to, the imprescriptible right of surface use in the nature of a servitude in favor of the Department of Natural Resources, including its Offices and Commissions, for the sole purpose of implementing, constructing, servicing and maintaining approved coastal zone management

and/or restoration projects. Utilization of any and all rights derived under this lease by the mineral lessee, its agents, successors or assigns, shall not interfere with nor hinder the reasonable surface use by the Department of Natural Resources, its Offices or Commissions, as herein above reserved.

Applicant: FLEETWOOD RESOURCES, INC.

Bidder	Cash Payment	Price/Acre	Rental	Oil	Gas	Other

Legend
07050015
Active_Leases
DOQQ2004

ST MARY PARISH

T16S - R10E

T17S - R10E

P.O.B.

SL 18339



TRACT 39043 - St. Mary Parish, Louisiana

All of the lands now or formerly constituting the beds and bottoms of all water bodies of every nature and description the title of which vests in the State of Louisiana, together with all islands arising therein and other lands formed by accretion or by reliction, where allowed by law, excepting tax adjudicated lands, and not presently under mineral lease on May 9, 2007, situated in St. Mary Parish, Louisiana, and more particularly described as follows: Beginning at a point having Coordinates of X = 1,970,969.52 and Y = 334,930.97; thence South 89 degrees 51 minutes 43 seconds West 5,436.99 feet to a point having Coordinates of X = 1,965,532.54 and Y = 334,917.88; thence North 00 degrees 12 minutes 56 seconds East 5,170.04 feet to a point having Coordinates of X = 1,965,551.98 and Y = 340,087.88; thence North 89 degrees 28 minutes 47 seconds East 5,452.71 feet to a point having Coordinates of X = 1,971,004.46 and Y = 340,137.40; thence South 00 degrees 23 minutes 04 seconds West 5,206.55 feet to the Point of Beginning, containing approximately **119 Gross acres / 18 Net acres**, all as more particularly outlined on a plat on file in the Office of Mineral Resources, Department of Natural Resources. All bearings, distances and coordinates are based on Louisiana Coordinate System of 1927, (North or South Zone), where applicable.

NOTE: The above description of the Tract nominated for lease has been provided and corrected, where required, exclusively by the nomination party. Any mineral lease selected from this Tract and awarded by the Louisiana State Mineral Board shall be without warranty of any kind, either express, implied, or statutory, including, but not limited to, the implied warranties of merchantability and fitness for a particular purpose. Should the mineral lease awarded by the Louisiana State Mineral Board be subsequently modified, cancelled or abrogated due to the existence of conflicting leases, operating agreements, private claims or other future obligations or conditions which may affect all or any portion of the leased Tract, it shall not relieve the Lessee of the obligation to pay any bonus due thereon to the Louisiana State Mineral Board, nor shall the Louisiana State Mineral Board be obligated to refund any consideration paid by the Lessor prior to such modification, cancellation, or abrogation, including, but not limited to, bonuses, rentals and royalties.

NOTE: The State of Louisiana does hereby reserve, and this lease shall be subject to, the imprescriptible right of surface use in the nature of a servitude in favor of the Department of Natural Resources, including its Offices and Commissions, for the sole purpose of implementing, constructing, servicing and maintaining approved coastal zone management and/or restoration projects. Utilization of any and all rights derived under this lease by the mineral lessee, its agents, successors or assigns, shall not interfere with nor hinder the reasonable surface use by the Department of Natural Resources, its Offices or Commissions, as herein above reserved.

Applicant: FLEETWOOD RESOURCES, INC.

Bidder	Cash Payment	Price/Acre	Rental	Oil	Gas	Other

ST MARY PARISH

T16S - R10E

BAYOU BLUE

WAX LAKE

P.O.B.

T17S - R10E



TRACT 39044 - St. Mary Parish, Louisiana

All of the lands now or formerly constituting the beds and bottoms of all water bodies of every nature and description the title of which vests in the State of Louisiana, together with all islands arising therein and other lands formed by accretion or by reliction, where allowed by law, excepting tax adjudicated lands, and not presently under mineral lease on May 9, 2007, situated in St. Mary Parish, Louisiana, and more particularly described as follows: Beginning at a point having Coordinates of X = 1,957,577.89 and Y = 340,015.45; thence South 00 degrees 09 minutes 40 seconds West 14,910.51 feet to a point on the North boundary of State Lease No. 18339 having Coordinates of X = 1,957,535.97 and Y = 325,105.00; thence along the boundary of said State Lease No. 18339 the following courses: West 2,573.12 feet to its Northwest corner having Coordinates of X = 1,954,962.85 and Y = 325,105.00 and South 00 degrees 14 minutes 17 seconds West 838.66 feet to a point on the North boundary of State Lease No. 18348 having Coordinates of X = 1,954,959.37 and Y = 324,266.35; thence South 89 degrees 05 minutes 20 seconds West 2,411.78 feet along the North boundary of said State Lease No. 18348 to its Northwest corner, said corner also being a point on the Eastern boundary of State Lease No. 329, as amended, having Coordinates of X = 1,952,547.90 and Y = 324,228.00; thence Northerly approximately 15,755 feet along the Eastern boundary of said State Lease No. 329 to its Northeast corner, said corner also being the Southeast corner of Operating Agreement No. 241; thence Easterly approximately 4,852 feet to the point of beginning, **LESS AND EXCEPT** that portion, if any, of State Lease No. 329 as amended, and Operating Agreement No. 241, that may lie within the above described tract, containing approximately **123 acres**, all as more particularly outlined on a plat on file in the Office of Mineral Resources, Department of Natural Resources. All bearings, distances and coordinates are based on Louisiana Coordinate System of 1927, (North or South Zone), where applicable.

NOTE: The above description of the Tract nominated for lease has been provided and corrected, where required, exclusively by the nomination party. Any mineral lease selected from this Tract and awarded by the Louisiana State Mineral Board shall be without warranty of any kind, either express, implied, or statutory, including, but not limited to, the implied warranties of merchantability and fitness for a particular purpose. Should the mineral lease awarded by the Louisiana State Mineral Board be subsequently modified, cancelled or abrogated due to the existence of conflicting leases, operating agreements, private claims or other future obligations or conditions which may affect all or any portion of the leased Tract, it shall not relieve the Lessee of the obligation to pay any bonus due thereon to the Louisiana State Mineral Board, nor shall the Louisiana State Mineral Board be obligated to refund any consideration paid by the Lessor prior to such modification, cancellation, or abrogation, including, but not limited to, bonuses, rentals and royalties.

NOTE: The State of Louisiana does hereby reserve, and this lease shall be subject to, the imprescriptible right of surface use in the nature of a

servitude in favor of the Department of Natural Resources, including its Offices and Commissions, for the sole purpose of implementing, constructing, servicing and maintaining approved coastal zone management and/or restoration projects. Utilization of any and all rights derived under this lease by the mineral lessee, its agents, successors or assigns, shall not interfere with nor hinder the reasonable surface use by the Department of Natural Resources, its Offices or Commissions, as herein above reserved.

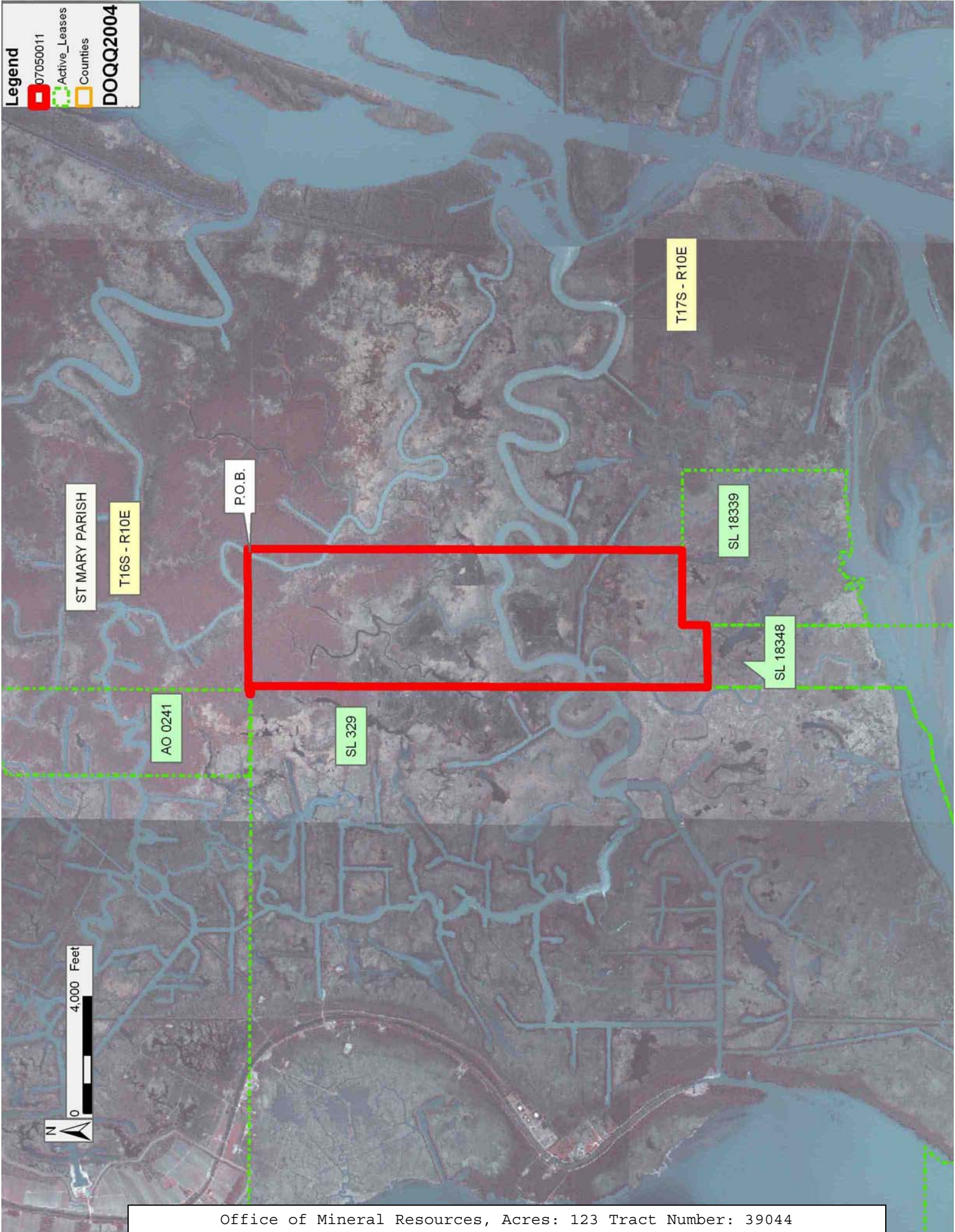
Applicant: FLEETWOOD RESOURCES, INC.

Bidder	Cash Payment	Price/Acre	Rental	Oil	Gas	Other

Legend

- 07050011
- Active_Leases
- Counties

DOQQ2004



TRACT 39045 - St. Mary Parish, Louisiana

All of the lands now or formerly constituting the beds and bottoms of all water bodies of every nature and description the title of which vests in the State of Louisiana, together with all islands arising therein and other lands formed by accretion or by reliction, where allowed by law, excepting tax adjudicated lands, and not presently under mineral lease on May 9, 2007, situated in St. Mary Parish, Louisiana, and more particularly described as follows: Beginning at a point having Coordinates of X = 1,970,969.52 and Y = 334,930.97; thence Easterly approximately 4,067 feet to the most Northerly Northwest corner of State Lease No. 3586, as amended; thence Southerly along the boundary of said State Lease No. 3586 to a point of intersection with a line having a bearing of North 89 degrees 32 minutes 46 seconds East and commencing at a point having Coordinates of X = 1,970,936.36 and Y = 329,670.45; thence South 89 degrees 32 minutes 46 seconds West approximately 1,655 feet to a point having Coordinates of X = 1,970,936.36 and Y = 329,670.45; thence North 00 degrees 21 minutes 40 seconds East 5,260.63 feet to the Point of Beginning, **LESS AND EXCEPT** that portion, if any, of State Lease No. 3586, as amended, that may fall within the above described tract, containing approximately **297 Gross acres / 44.55 Net acres**, all as more particularly outlined on a plat on file in the Office of Mineral Resources, Department of Natural Resources. All bearings, distances and coordinates are based on Louisiana Coordinate System of 1927, (North or South Zone), where applicable.

NOTE: The above description of the Tract nominated for lease has been provided and corrected, where required, exclusively by the nomination party. Any mineral lease selected from this Tract and awarded by the Louisiana State Mineral Board shall be without warranty of any kind, either express, implied, or statutory, including, but not limited to, the implied warranties of merchantability and fitness for a particular purpose. Should the mineral lease awarded by the Louisiana State Mineral Board be subsequently modified, cancelled or abrogated due to the existence of conflicting leases, operating agreements, private claims or other future obligations or conditions which may affect all or any portion of the leased Tract, it shall not relieve the Lessee of the obligation to pay any bonus due thereon to the Louisiana State Mineral Board, nor shall the Louisiana State Mineral Board be obligated to refund any consideration paid by the Lessor prior to such modification, cancellation, or abrogation, including, but not limited to, bonuses, rentals and royalties.

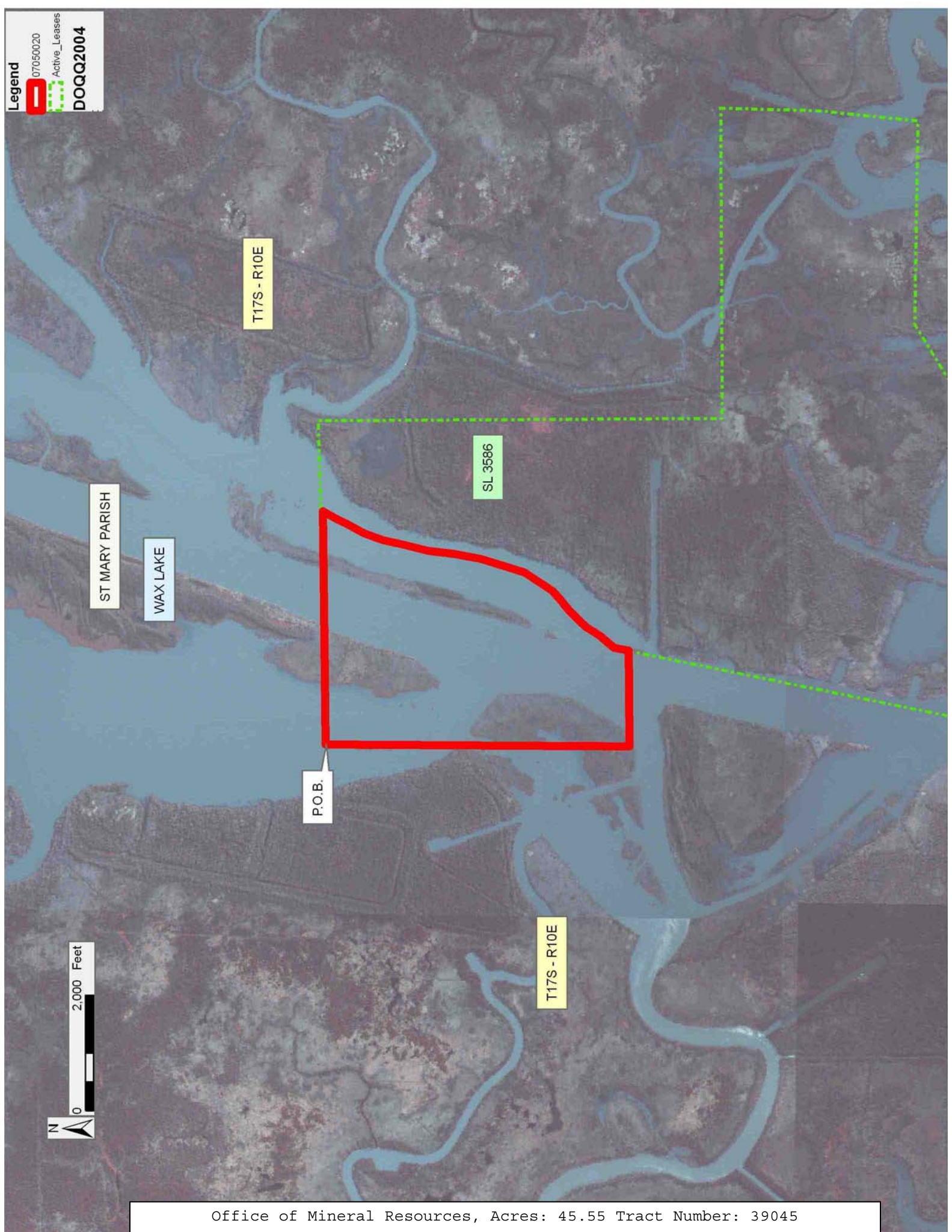
NOTE: The State of Louisiana does hereby reserve, and this lease shall be subject to, the imprescriptible right of surface use in the nature of a servitude in favor of the Department of Natural Resources, including its Offices and Commissions, for the sole purpose of implementing, constructing, servicing and maintaining approved coastal zone management and/or restoration projects. Utilization of any and all rights derived under this lease by the mineral lessee, its agents, successors or assigns, shall not interfere with nor hinder the reasonable surface use by the

Department of Natural Resources, its Offices or Commissions, as herein above reserved.

Applicant: FLEETWOOD RESOURCES, INC.

Bidder	Cash Payment	Price/Acre	Rental	Oil	Gas	Other

Legend
07050020
Active_Leases
DOQQ2004



TRACT 39046 - St. Mary Parish, Louisiana

All of the lands now or formerly constituting the beds and bottoms of all water bodies of every nature and description the title of which vests in the State of Louisiana, together with all islands arising therein and other lands formed by accretion or by reliction, where allowed by law, excepting tax adjudicated lands, and not presently under mineral lease on May 9, 2007, situated in St. Mary Parish, Louisiana, and more particularly described as follows: Beginning at a point having Coordinates of X = 1,970,969.52 and Y = 334,930.97; thence South 00 degrees 21 minutes 40 seconds West 5,260.63 feet to a point having Coordinates of X = 1,970,936.36 and Y = 329,670.45; thence South 89 degrees 44 minutes 27 seconds West 5,458.37 feet to a point having Coordinates of X = 1,965,478.05 and Y = 329,645.76; thence North 00 degrees 35 minutes 32 seconds East 5,272.40 feet to a point having Coordinates of X = 1,965,532.54 and Y = 334,917.88; thence North 89 degrees 51 minutes 43 seconds East 5,436.99 feet to the Point of Beginning, containing approximately **146 Gross acres / 22 Net acres**, all as more particularly outlined on a plat on file in the Office of Mineral Resources, Department of Natural Resources. All bearings, distances and coordinates are based on Louisiana Coordinate System of 1927, (North or South Zone), where applicable.

NOTE: The above description of the Tract nominated for lease has been provided and corrected, where required, exclusively by the nomination party. Any mineral lease selected from this Tract and awarded by the Louisiana State Mineral Board shall be without warranty of any kind, either express, implied, or statutory, including, but not limited to, the implied warranties of merchantability and fitness for a particular purpose. Should the mineral lease awarded by the Louisiana State Mineral Board be subsequently modified, cancelled or abrogated due to the existence of conflicting leases, operating agreements, private claims or other future obligations or conditions which may affect all or any portion of the leased Tract, it shall not relieve the Lessee of the obligation to pay any bonus due thereon to the Louisiana State Mineral Board, nor shall the Louisiana State Mineral Board be obligated to refund any consideration paid by the Lessor prior to such modification, cancellation, or abrogation, including, but not limited to, bonuses, rentals and royalties.

NOTE: The State of Louisiana does hereby reserve, and this lease shall be subject to, the imprescriptible right of surface use in the nature of a servitude in favor of the Department of Natural Resources, including its Offices and Commissions, for the sole purpose of implementing, constructing, servicing and maintaining approved coastal zone management and/or restoration projects. Utilization of any and all rights derived under this lease by the mineral lessee, its agents, successors or assigns, shall not interfere with nor hinder the reasonable surface use by the Department of Natural Resources, its Offices or Commissions, as herein above reserved.

Applicant: FLEETWOOD RESOURCES, INC.

Bidder	Cash Payment	Price/Acre	Rental	Oil	Gas	Other

Legend
07050017
DOQQ2004

ST MARY PARISH

T17S - R10E

WAX LAKE

P.O.B.



HOG BAYOU

LEOPARD BAYOU

