

**TRACT 39007 - Caddo Parish, Louisiana**

All of the lands now or formerly constituting the beds and bottoms of all water bodies of every nature and description the title of which vests in the State of Louisiana, together with all islands arising therein and other lands formed by accretion or by reliction, where allowed by law, excepting tax adjudicated lands, and not presently under mineral lease on May 9, 2007, situated in Caddo Parish, Louisiana, and more particularly described as follows: Beginning at a point having Coordinates of X = 1,533,330.00 and Y = 759,669.77; thence East 5,365.51 feet to a point having Coordinates of X = 1,538,695.51 and Y = 759,669.77; thence Southerly approximately 3,550 feet to a Northwest corner of State Lease No. 173, as amended; thence along the Northern boundary of said State Lease No. 173 the following courses: Southerly approximately 1,796 feet; Westerly approximately 2,799 feet; Northerly approximately 1,556 feet; Southwesterly approximately 139 feet; Southwesterly approximately 101 feet; Southerly approximately 390 feet; Southwesterly approximately 100 feet; Southerly approximately 152 feet; Southerly approximately 145 feet; Southeasterly approximately 215 feet; Southeasterly approximately 191 feet and Southeasterly approximately 176 feet to a point of intersection with an East-West line having a Coordinate of Y = 754,359.24; thence West approximately 2,502 feet to a point having Coordinates of X = 1,533,330.00 and Y = 754,359.24; thence North 5,310.53 feet to the point of beginning, **LESS AND EXCEPT** any portion of State Lease No. 173, as amended, that may lie within the above described tract, containing approximately **133 acres**, all as more particularly outlined on a plat on file in the Office of Mineral Resources, Department of Natural Resources. All bearings, distances and coordinates are based on Louisiana Coordinate System of 1927, (North or South Zone), where applicable.

NOTE: The above description of the Tract nominated for lease has been provided and corrected, where required, exclusively by the nomination party. Any mineral lease selected from this Tract and awarded by the Louisiana State Mineral Board shall be without warranty of any kind, either express, implied, or statutory, including, but not limited to, the implied warranties of merchantability and fitness for a particular purpose. Should the mineral lease awarded by the Louisiana State Mineral Board be subsequently modified, cancelled or abrogated due to the existence of conflicting leases, operating agreements, private claims or other future obligations or conditions which may affect all or any portion of the leased Tract, it shall not relieve the Lessee of the obligation to pay any bonus due thereon to the Louisiana State Mineral Board, nor shall the Louisiana State Mineral Board be obligated to refund any consideration paid by the Lessor prior to such modification, cancellation, or abrogation, including, but not limited to, bonuses, rentals and royalties.

Bidder	Cash Payment	Price/ Acre	Rental	Oil	Gas	Other


Applicant: THEOPHILUS OIL, GAS & LAND SERVICES, LLC

Legend

07050031  
Active\_Leases

DOQQ2004

CADDO PARISH

T20N - R16W

SL 173

P.O.B.

CADDO LAKE



**TRACT 39008 - Bossier and Caddo Parishes, Louisiana**

All of the lands now or formerly constituting the beds and bottoms of all water bodies of every nature and description the title of which vests in the State of Louisiana, together with all islands arising therein and other lands formed by accretion or by reliction, where allowed by law, excepting tax adjudicated lands, and not presently under mineral lease on May 9, 2007, situated in Bossier and Caddo Parishes, Louisiana, and more particularly described as follows: Beginning at the Northwest corner of State Lease No. 11155, as amended, having Coordinates of X = 1,630,100.00 and Y = 638,800.00; thence North 13,564.67 feet to a point having Coordinates of X = 1,630,100.00 and Y = 652,364.67; thence East 15,628.17 feet to a point having Coordinates of X = 1,645,728.17 and Y = 652,364.67; thence South 13,564.67 feet to a point having Coordinates of X = 1,645,728.17 and Y = 638,800.00; thence West 2,428.17 feet to the Northeast corner of said State Lease No. 11155 having Coordinates of X = 1,643,300.00 and Y = 638,800.00; thence along the boundary of said State Lease No. 11155 the following courses: West approximately 970 feet to the East shoreline of Pruitts Lake; Southeasterly; Southerly; Southwesterly; and Northerly along the meanders of said Lake to a point on its West shoreline having a Coordinate of Y = 638,800.00 and West approximately 10,752 feet to the point of beginning, **LESS AND EXCEPT** any portion of State Lease No. 11155, as amended, which may lie within the above described tract; (This nomination includes only waterbottoms claimed and owned by the state and specifically excludes any land which the state may claim or own and to which the mineral rights are vested in the state), containing approximately **326 acres**, all as more particularly outlined on a plat on file in the Office of Mineral Resources, Department of Natural Resources. All bearings, distances and coordinates are based on Louisiana Coordinate System of 1927, (North or South Zone), where applicable.

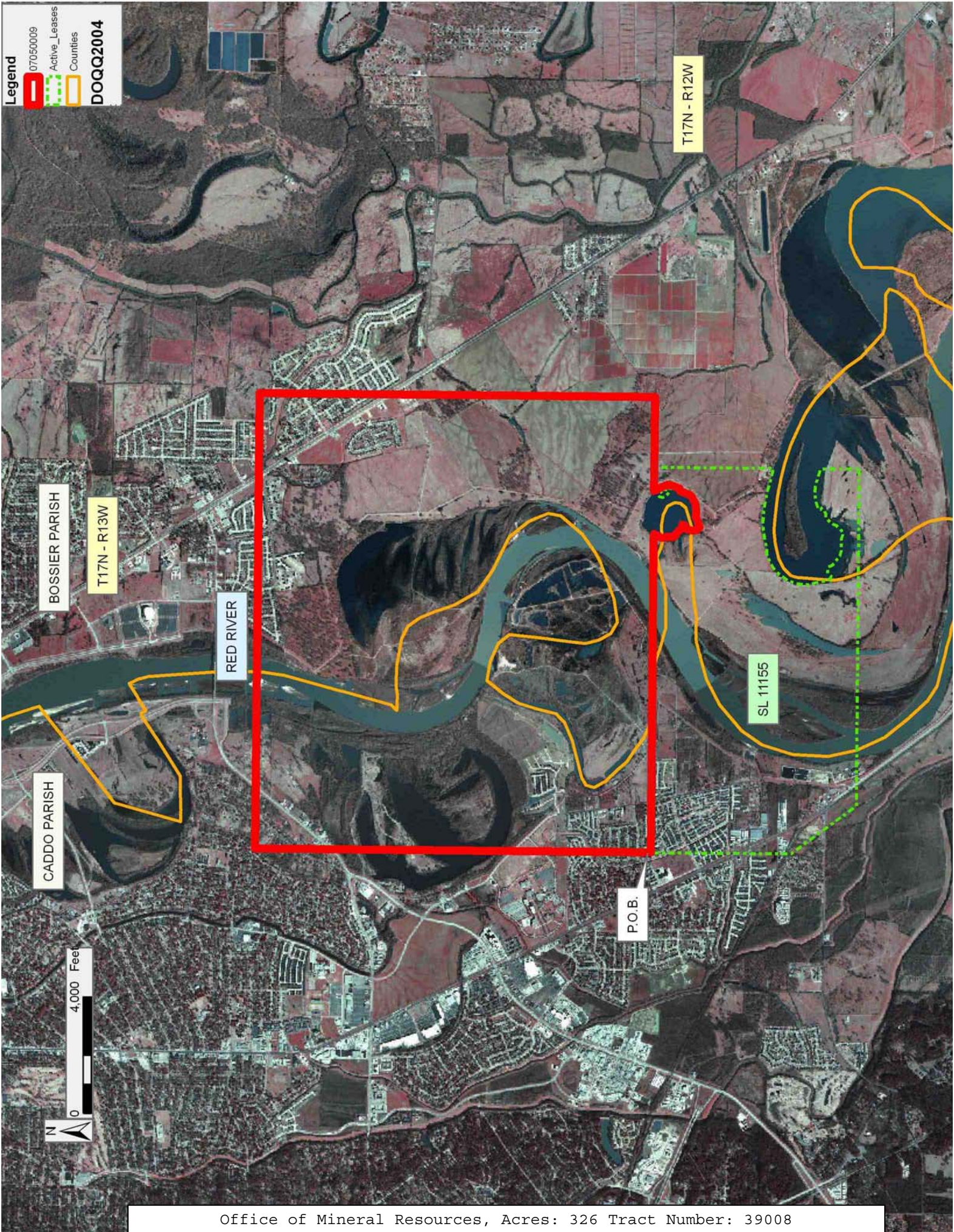
NOTE: The above description of the Tract nominated for lease has been provided and corrected, where required, exclusively by the nomination party. Any mineral lease selected from this Tract and awarded by the Louisiana State Mineral Board shall be without warranty of any kind, either express, implied, or statutory, including, but not limited to, the implied warranties of merchantability and fitness for a particular purpose. Should the mineral lease awarded by the Louisiana State Mineral Board be subsequently modified, cancelled or abrogated due to the existence of conflicting leases, operating agreements, private claims or other future obligations or conditions which may affect all or any portion of the leased Tract, it shall not relieve the Lessee of the obligation to pay any bonus due thereon to the Louisiana State Mineral Board, nor shall the Louisiana State Mineral Board be obligated to refund any consideration paid by the Lessor prior to such modification, cancellation, or abrogation, including, but not limited to, bonuses, rentals and royalties.

Applicant: SKLARCO, L.L.C.

Bidder	Cash Payment	Price/ Acre	Rental	Oil	Gas	Other

**Legend**

- 07050009
- Active\_Leases
- Counties
- DOQQ2004



**TRACT 39009 - De Soto and Red River Parishes, Louisiana**


All of the lands now or formerly constituting the beds and bottoms of all water bodies of every nature and description the title of which vests in the State of Louisiana, together with all islands arising therein and other lands formed by accretion or by reliction, where allowed by law, excepting tax adjudicated lands, and not presently under mineral lease on May 9, 2007, situated in De Soto and Red River Parishes, Louisiana, and more particularly described as follows: Beginning at a point having Coordinates of X = 1,681,800.00 and Y = 520,100.00; thence East 5,600.00 feet to a point having Coordinates of X = 1,687,400.00 and Y = 520,100.00; thence South 3,928.00 feet to a point on the North boundary of State Lease No. 18372 having Coordinates of X = 1,687,400.00 and Y = 516,172.00; thence West 2,640.00 feet along the North boundary of said State Lease No. 18372 to its Northwest corner, having Coordinates of X = 1,684,760.00 and Y = 516,172.00; thence South 1,672.00 feet along the West line of said State Lease No. 18372 to a point having Coordinates of X = 1,684,760.00 and Y = 514,500.00; thence West 2,960.00 feet to a point having Coordinates of X = 1,681,800.00 and Y = 514,500.00; thence North 5,600.00 feet to the point of beginning, containing approximately **18 acres**, all as more particularly outlined on a plat on file in the Office of Mineral Resources, Department of Natural Resources. All bearings, distances and coordinates are based on Louisiana Coordinate System of 1927, (North or South Zone), where applicable.


NOTE: The above description of the Tract nominated for lease has been provided and corrected, where required, exclusively by the nomination party. Any mineral lease selected from this Tract and awarded by the Louisiana State Mineral Board shall be without warranty of any kind, either express, implied, or statutory, including, but not limited to, the implied warranties of merchantability and fitness for a particular purpose. Should the mineral lease awarded by the Louisiana State Mineral Board be subsequently modified, cancelled or abrogated due to the existence of conflicting leases, operating agreements, private claims or other future obligations or conditions which may affect all or any portion of the leased Tract, it shall not relieve the Lessee of the obligation to pay any bonus due thereon to the Louisiana State Mineral Board, nor shall the Louisiana State Mineral Board be obligated to refund any consideration paid by the Lessor prior to such modification, cancellation, or abrogation, including, but not limited to, bonuses, rentals and royalties.


Applicant: RHUMBA OPERATING, LLC

Bidder	Cash Payment	Price/ Acre	Rental	Oil	Gas	Other

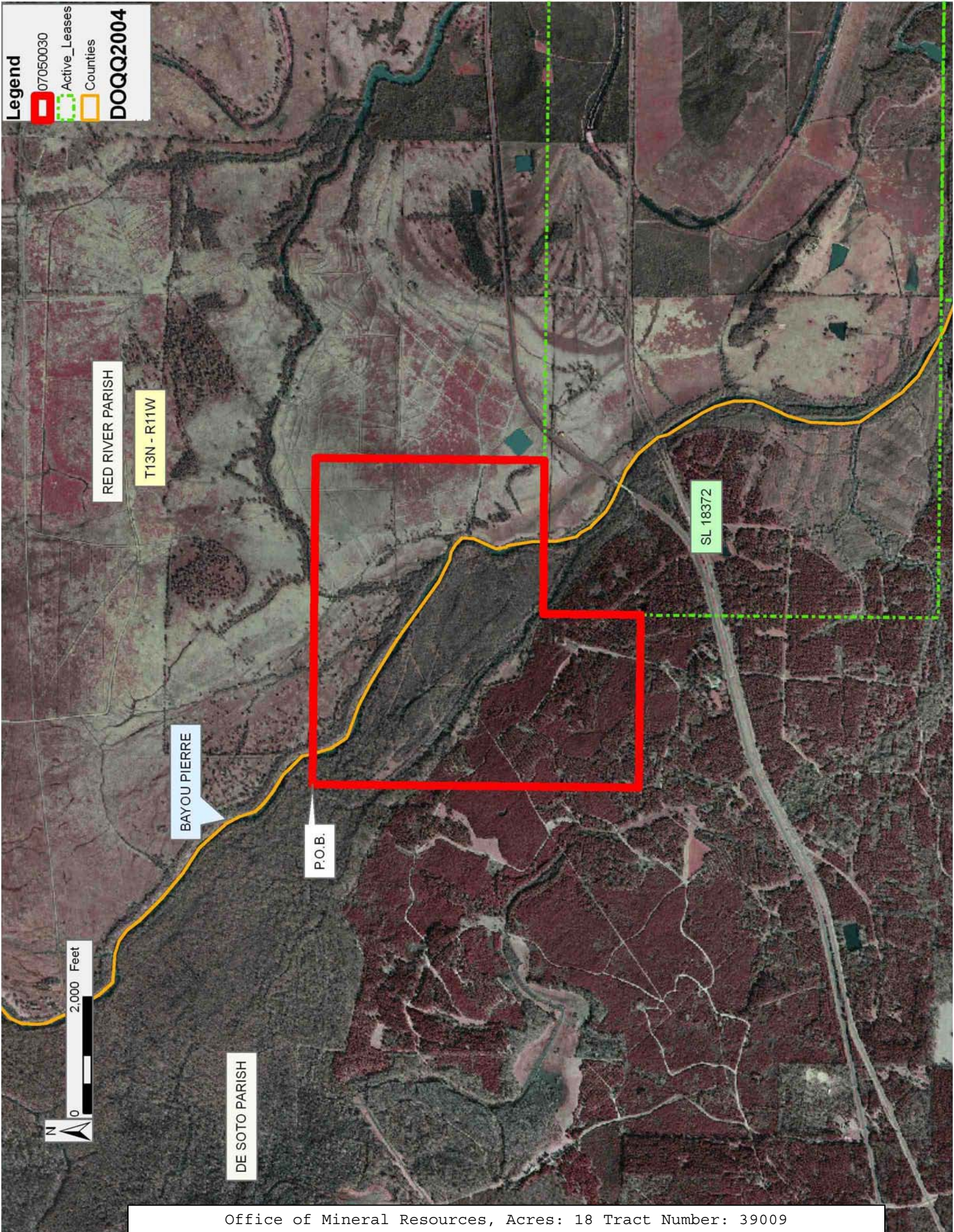
**Legend**

 07050030

 Active\_Leases

 Counties

**DOQQ2004**



**TRACT 39010 - Red River Parish, Louisiana**

All of the lands now or formerly constituting the beds and bottoms of all water bodies of every nature and description the title of which vests in the State of Louisiana, together with all islands arising therein and other lands formed by accretion or by reliction, where allowed by law, excepting tax adjudicated lands, and not presently under mineral lease on May 9, 2007, situated in Red River Parish, Louisiana, and more particularly described as follows: Beginning at a point having Coordinates of X = 1,687,400.00 and Y = 520,100.00; thence East 5,600.00 feet to a point having Coordinates of X = 1,693,000.00 and Y = 520,100.00; thence South 3,928.00 feet to a point on the North boundary of State Lease No. 18372 having Coordinates of X = 1,693,000.00 and Y = 516,172.00; thence West 5,600.00 feet along the North boundary of said State Lease No. 18372 to a point having Coordinates of X = 1,687,400.00 and Y = 516,172.00; thence North 3,928.00 feet to the point of beginning, containing approximately **2.32 acres**, all as more particularly outlined on a plat on file in the Office of Mineral Resources, Department of Natural Resources. All bearings, distances and coordinates are based on Louisiana Coordinate System of 1927, (North or South Zone), where applicable.

NOTE: The above description of the Tract nominated for lease has been provided and corrected, where required, exclusively by the nomination party. Any mineral lease selected from this Tract and awarded by the Louisiana State Mineral Board shall be without warranty of any kind, either express, implied, or statutory, including, but not limited to, the implied warranties of merchantability and fitness for a particular purpose. Should the mineral lease awarded by the Louisiana State Mineral Board be subsequently modified, cancelled or abrogated due to the existence of conflicting leases, operating agreements, private claims or other future obligations or conditions which may affect all or any portion of the leased Tract, it shall not relieve the Lessee of the obligation to pay any bonus due thereon to the Louisiana State Mineral Board, nor shall the Louisiana State Mineral Board be obligated to refund any consideration paid by the Lessor prior to such modification, cancellation, or abrogation, including, but not limited to, bonuses, rentals and royalties.

Applicant: RHUMBA OPERATING, LLC

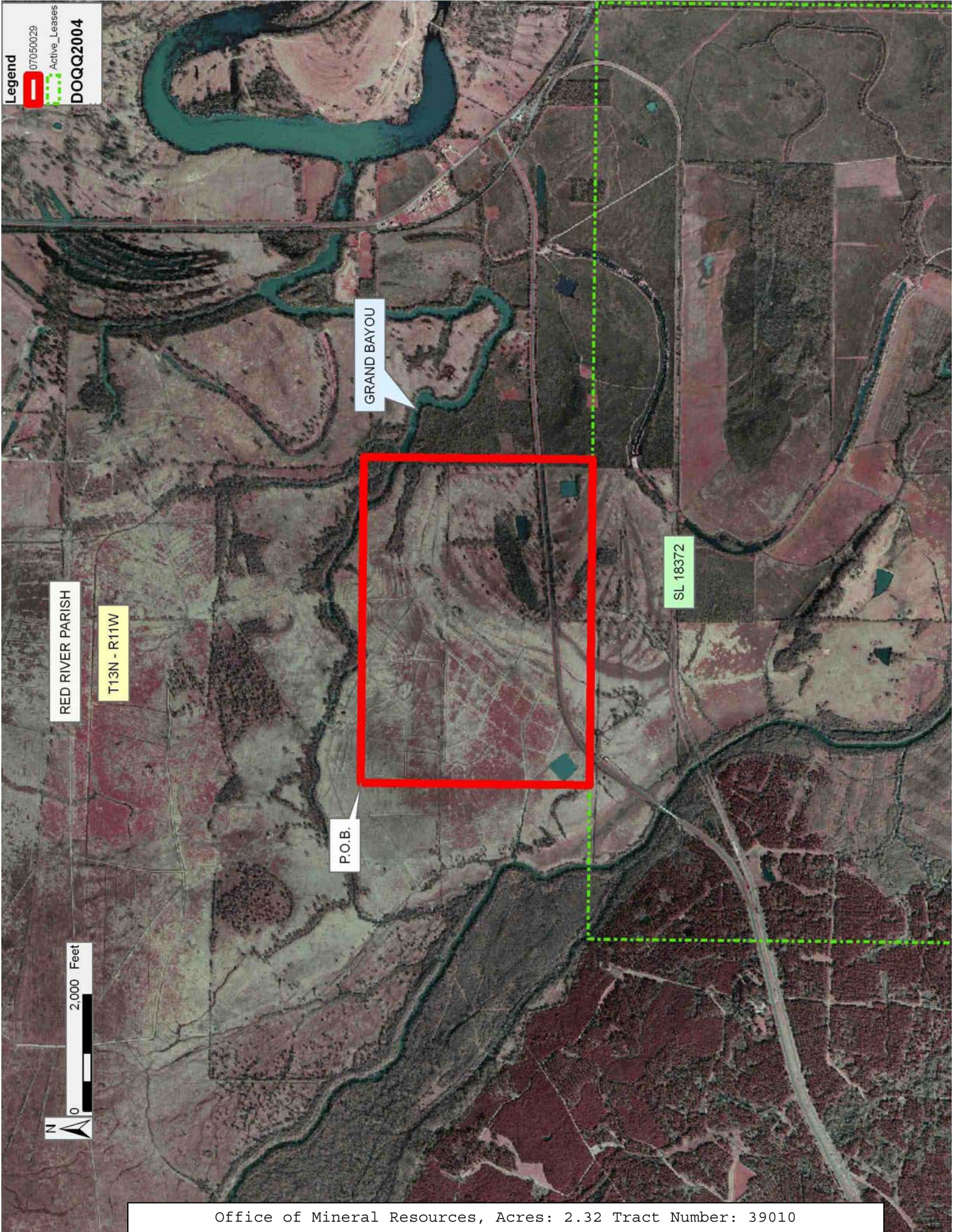
Bidder	Cash Payment	Price/Acre	Rental	Oil	Gas	Other

Legend

07050029

Active\_Leases

DOQQ2004



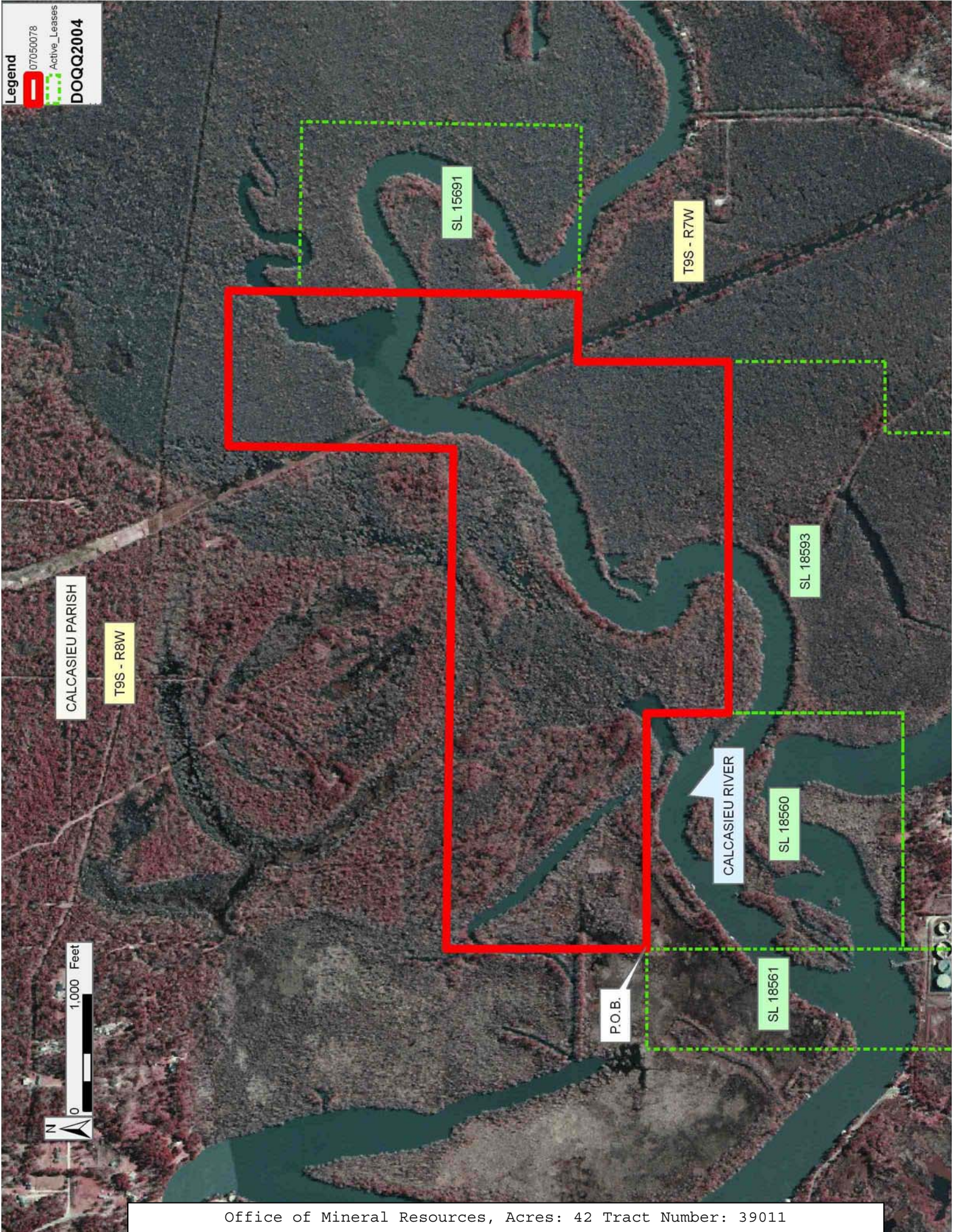
#### **TRACT 39011 - Calcasieu Parish, Louisiana**

All of the lands now or formerly constituting the beds and bottoms of all water bodies of every nature and description the title of which vests in the State of Louisiana, together with all islands arising therein and other lands formed by accretion or by reliction, where allowed by law, excepting tax adjudicated lands, and not presently under mineral lease on May 9, 2007, situated in Calcasieu Parish, Louisiana, and more particularly described as follows: Beginning at a point having Coordinates of X = 1,428,522.94 and Y = 596,976.37; thence North 1,722.89 feet to a point having Coordinates of X = 1,428,522.94 and Y = 598,699.26; thence East 89 degrees 09 minutes 34 seconds South 4,300 feet to a point having Coordinates of X = 1,432,822.48 and Y = 598,636.18; thence North 00 degrees 37 minutes 17 seconds East 1,931.86 feet to a point having Coordinates of X = 1,432,843.43 and Y = 600,567.93; thence East 1336.12 feet X = 1,434,179.55 and Y = 600,567.93; thence South 00 degrees 38 minutes 32 seconds West 3,006.97 feet to X = 1,434,145.85 and Y = 597,561.15; thence North 89 degrees 11 minutes 43 seconds West 578.1 feet to X = 1,433,567.81 and Y = 597,569.27; thence south 1,295.19 feet to X = 1,433,567.81 and Y = 596,274.08; thence West 3017.61 feet to X = 1,430,550.20 and Y = 596,274.08 ; thence North 702.29 feet to X = 1,430,550.20 and Y = 596,976.37; thence West 2027.26 to the point of beginning, containing approximately **42 acres**, all as more particularly outlined on a plat on file in the Office of Mineral Resources, Department of Natural Resources. All bearings, distances and coordinates are based on Louisiana Coordinate System of 1927, (North or South Zone), where applicable.

NOTE: The above description of the Tract nominated for lease has been provided and corrected, where required, exclusively by the nomination party. Any mineral lease selected from this Tract and awarded by the Louisiana State Mineral Board shall be without warranty of any kind, either express, implied, or statutory, including, but not limited to, the implied warranties of merchantability and fitness for a particular purpose. Should the mineral lease awarded by the Louisiana State Mineral Board be subsequently modified, cancelled or abrogated due to the existence of conflicting leases, operating agreements, private claims or other future obligations or conditions which may affect all or any portion of the leased Tract, it shall not relieve the Lessee of the obligation to pay any bonus due thereon to the Louisiana State Mineral Board, nor shall the Louisiana State Mineral Board be obligated to refund any consideration paid by the Lessor prior to such modification, cancellation, or abrogation, including, but not limited to, bonuses, rentals and royalties.

Applicant: STAFF OFFICE OF MINERAL RESOURCES

Bidder	Cash Payment	Price/ Acre	Rental	Oil	Gas	Other



**TRACT 39012 - St. Bernard Parish, Louisiana**

All of the lands now or formerly constituting the beds and bottoms of all water bodies of every nature and description the title of which vests in the State of Louisiana, together with all islands arising therein and other lands formed by accretion or by reliction, where allowed by law, excepting tax adjudicated lands, and not presently under mineral lease on May 9, 2007, situated in St. Bernard Parish, Louisiana, and more particularly described as follows: Beginning at a point having Coordinates of X = 2,611,425.00 and Y = 518,969.00; thence East 9,127.00 feet to a point having Coordinates of X = 2,620,552.00 and Y = 518,969.00; thence South 8,826.00 feet to a point having Coordinates of X = 2,620,552.00 and Y = 510,143.00; thence West 9,127.00 feet to a point having Coordinates of X = 2,611,425.00 and Y = 510,143.00; thence North 8,826.00 feet to the point of beginning, containing approximately **1,849.29 acres**, all as more particularly outlined on a plat on file in the Office of Mineral Resources, Department of Natural Resources. All bearings, distances and coordinates are based on Louisiana Coordinate System of 1927, (North or South Zone), where applicable.

NOTE: The above description of the Tract nominated for lease has been provided and corrected, where required, exclusively by the nomination party. Any mineral lease selected from this Tract and awarded by the Louisiana State Mineral Board shall be without warranty of any kind, either express, implied, or statutory, including, but not limited to, the implied warranties of merchantability and fitness for a particular purpose. Should the mineral lease awarded by the Louisiana State Mineral Board be subsequently modified, cancelled or abrogated due to the existence of conflicting leases, operating agreements, private claims or other future obligations or conditions which may affect all or any portion of the leased Tract, it shall not relieve the Lessee of the obligation to pay any bonus due thereon to the Louisiana State Mineral Board, nor shall the Louisiana State Mineral Board be obligated to refund any consideration paid by the Lessor prior to such modification, cancellation, or abrogation, including, but not limited to, bonuses, rentals and royalties.

NOTE: The Office of Mineral Resources will require a minimum bonus of \$230 per acre and a minimum royalty of 23%.

NOTE: The State of Louisiana does hereby reserve, and this lease shall be subject to, the imprescriptible right of surface use in the nature of a servitude in favor of the Department of Natural Resources, including its Offices and Commissions, for the sole purpose of implementing, constructing, servicing and maintaining approved coastal zone management and/or restoration projects. Utilization of any and all rights derived under this lease by the mineral lessee, its agents, successors or assigns, shall not interfere with nor hinder the reasonable surface use by the Department of Natural Resources, its Offices or Commissions, as herein above reserved.

NOTE: The Department of Wildlife and Fisheries has designated certain areas in the coastal waters of the State of Louisiana as Oyster Seed Bed Areas. The exact location of those Seed Bed Areas must be obtained from the Department of Wildlife and Fisheries and any work done under a mineral lease from the State of Louisiana may necessarily be conducted in conformity with the rules and regulations promulgated by the said Department of Wildlife and Fisheries for Oyster Seed Bed Areas.

Applicant: TRINITY ENERGY SERVICES, LLC

Bidder	Cash Payment	Price/ Acre	Rental	Oil	Gas	Other

Legend

07050022

Blocks

ST BERNARD PARISH

NORTH LAKE BORGNE AREA

LB0013

N

0

2,000 Feet

CHANDELEUR SOUND AREA ADDITION, REVISED

CX0022

CX0023

P.O.B.

BRETON SOUND

Office of Mineral Resources, Acres: 1849.29 Tract Number: 39012

**TRACT 39013 - Portion of Blocks 22, and 23, Chandeleur Sound Addition Area, Revised, St. Bernard Parish, Louisiana**

All of the lands now or formerly constituting the beds and bottoms of all water bodies of every nature and description the title of which vests in the State of Louisiana, together with all islands arising therein and other lands formed by accretion or by reliction, where allowed by law, excepting tax adjudicated lands, and not presently under mineral lease on May 9, 2007, situated in St. Bernard Parish, Louisiana, and more particularly described as follows: Beginning at a point having Coordinates of X = 2,620,552.00 and Y = 518,969.00; thence East 7,055.00 feet to a point within Block 22, Chandeleur Sound Area Addition, Revised having Coordinates of X = 2,627,607.00 and Y = 518,969.00; thence South 8,826.00 feet to a point within Block 23, Chandeleur Sound Area Addition, Revised having Coordinates of X = 2,627,607.00 and Y = 510,143.00; thence West 7,055.00 feet to a point having Coordinates of X = 2,620,552.00 and Y = 510,143.00; thence North 8,826.00 feet to the point of beginning, containing approximately **1,429.46 acres**, all as more particularly outlined on a plat on file in the Office of Mineral Resources, Department of Natural Resources. All bearings, distances and coordinates are based on Louisiana Coordinate System of 1927, (North or South Zone), where applicable.

NOTE: The above description of the Tract nominated for lease has been provided and corrected, where required, exclusively by the nomination party. Any mineral lease selected from this Tract and awarded by the Louisiana State Mineral Board shall be without warranty of any kind, either express, implied, or statutory, including, but not limited to, the implied warranties of merchantability and fitness for a particular purpose. Should the mineral lease awarded by the Louisiana State Mineral Board be subsequently modified, cancelled or abrogated due to the existence of conflicting leases, operating agreements, private claims or other future obligations or conditions which may affect all or any portion of the leased Tract, it shall not relieve the Lessee of the obligation to pay any bonus due thereon to the Louisiana State Mineral Board, nor shall the Louisiana State Mineral Board be obligated to refund any consideration paid by the Lessor prior to such modification, cancellation, or abrogation, including, but not limited to, bonuses, rentals and royalties.

NOTE: The Office of Mineral Resources will require a minimum bonus of \$230 per acre and a minimum royalty of 23%.

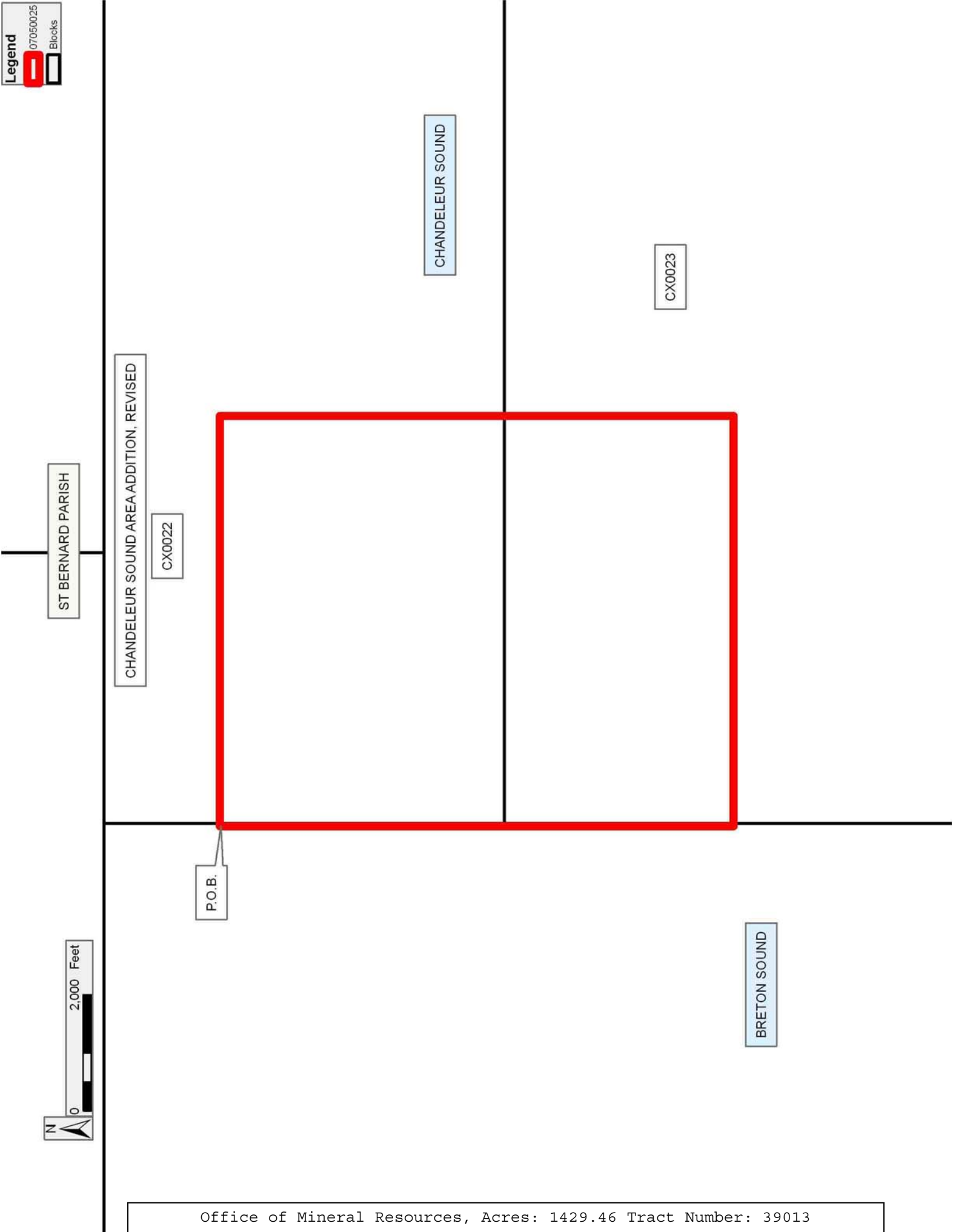
NOTE: The State of Louisiana does hereby reserve, and this lease shall be subject to, the imprescriptible right of surface use in the nature of a servitude in favor of the Department of Natural Resources, including its Offices and Commissions, for the sole purpose of implementing, constructing, servicing and maintaining approved coastal zone management and/or restoration projects. Utilization of any and all rights derived under this lease by the mineral lessee, its agents, successors or assigns, shall not interfere with nor hinder the reasonable surface use by the

Department of Natural Resources, its Offices or Commissions, as herein above reserved.

NOTE: The Department of Wildlife and Fisheries has designated certain areas in the coastal waters of the State of Louisiana as Oyster Seed Bed Areas. The exact location of those Seed Bed Areas must be obtained from the Department of Wildlife and Fisheries and any work done under a mineral lease from the State of Louisiana may necessarily be conducted in conformity with the rules and regulations promulgated by the said Department of Wildlife and Fisheries for Oyster Seed Bed Areas.

Applicant: TRINITY ENERGY SERVICES, LLC

Bidder	Cash Payment	Price/ Acre	Rental	Oil	Gas	Other



**TRACT 39014 - Lafayette and Vermilion Parishes, Louisiana**

All of the lands now or formerly constituting the beds and bottoms of all water bodies of every nature and description the title of which vests in the State of Louisiana, together with all islands arising therein and other lands formed by accretion or by reliction, where allowed by law, excepting tax adjudicated lands, and not presently under mineral lease on May 9, 2007, situated in Lafayette and Vermilion Parishes, Louisiana, and more particularly described as follows: Beginning at a point having Coordinates of X = 1,760,597.00 and Y = 522,784.00; thence East approximately 3,629 feet to a point on the boundary of Operating Agreement 0055; thence Southeasterly and Northeasterly along the boundary of said Operating Agreement 0055 to a point of intersection with an East West line having a Coordinate of Y = 522,784.00; thence East approximately 1,697 feet to a point having Coordinates of X = 1,766,412.00 and Y = 522,784.00; thence South 09 degrees 16 minutes 26 seconds East 10,592.45 feet to the Northeast corner of State Lease No. 18990 having Coordinates of X = 1,768,119.00 and Y = 512,330.00; thence West 5,815.00 feet along the North boundary of said State Lease No. 18990 to its Northwest corner having Coordinates of X = 1,762,304.00 and X = 512,330.00; thence North 09 degrees 16 minutes 26 seconds West 10,592.45 feet to the point of beginning, **LESS AND EXCEPT** that portion, if any, of Operating Agreement 0055 that may lie within the above described tract, containing approximately **45 acres**, all as more particularly outlined on a plat on file in the Office of Mineral Resources, Department of Natural Resources. All bearings, distances and coordinates are based on Louisiana Coordinate System of 1927, (North or South Zone), where applicable.

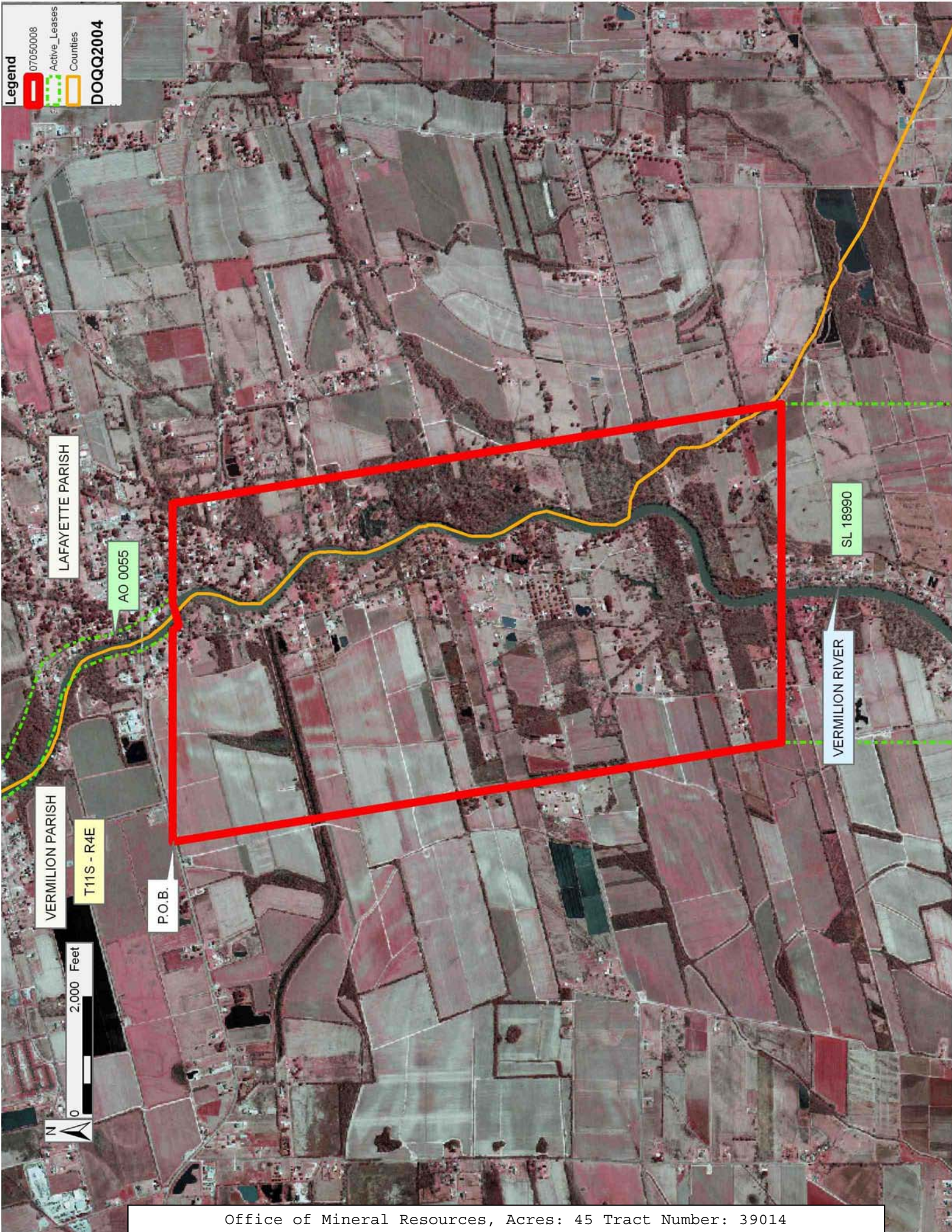
NOTE: The above description of the Tract nominated for lease has been provided and corrected, where required, exclusively by the nomination party. Any mineral lease selected from this Tract and awarded by the Louisiana State Mineral Board shall be without warranty of any kind, either express, implied, or statutory, including, but not limited to, the implied warranties of merchantability and fitness for a particular purpose. Should the mineral lease awarded by the Louisiana State Mineral Board be subsequently modified, cancelled or abrogated due to the existence of conflicting leases, operating agreements, private claims or other future obligations or conditions which may affect all or any portion of the leased Tract, it shall not relieve the Lessee of the obligation to pay any bonus due thereon to the Louisiana State Mineral Board, nor shall the Louisiana State Mineral Board be obligated to refund any consideration paid by the Lessor prior to such modification, cancellation, or abrogation, including, but not limited to, bonuses, rentals and royalties.

Applicant: STEPHEN E. WILSON

Bidder	Cash Payment	Price/ Acre	Rental	Oil	Gas	Other

**Legend**

- 07050008
- Active\_Leases
- Counties
- DOQQ2004



**TRACT 39015 - Portion of Blocks 23, and 46, Chandeleur Sound Addition Area, Revised, St. Bernard Parish, Louisiana**

All of the lands now or formerly constituting the beds and bottoms of all water bodies of every nature and description the title of which vests in the State of Louisiana, together with all islands arising therein and other lands formed by accretion or by reliction, where allowed by law, excepting tax adjudicated lands, and not presently under mineral lease on May 9, 2007, situated in St. Bernard Parish, Louisiana, and more particularly described as follows: Beginning at a point having Coordinates of X = 2,620,552.00 and Y = 510,143.00; thence East 7,055.00 feet to a point within Block 23, Chandeleur Sound Area Addition, Revised having Coordinates of X = 2,627,607.00 and Y = 510,143.00; thence South 10,946.00 feet to a point within Block 46, Chandeleur Sound Area Addition, Revised, having Coordinates of X = 2,627,607.00 and Y = 499,197.00; thence West 7,055.00 feet to a point having Coordinates of X = 2,620,552.00 and Y = 499,197.00; thence North 10,946.00 feet to the point of beginning, containing approximately **1,772.82 acres**, all as more particularly outlined on a plat on file in the Office of Mineral Resources, Department of Natural Resources. All bearings, distances and coordinates are based on Louisiana Coordinate System of 1927, (North or South Zone), where applicable.

NOTE: The above description of the Tract nominated for lease has been provided and corrected, where required, exclusively by the nomination party. Any mineral lease selected from this Tract and awarded by the Louisiana State Mineral Board shall be without warranty of any kind, either express, implied, or statutory, including, but not limited to, the implied warranties of merchantability and fitness for a particular purpose. Should the mineral lease awarded by the Louisiana State Mineral Board be subsequently modified, cancelled or abrogated due to the existence of conflicting leases, operating agreements, private claims or other future obligations or conditions which may affect all or any portion of the leased Tract, it shall not relieve the Lessee of the obligation to pay any bonus due thereon to the Louisiana State Mineral Board, nor shall the Louisiana State Mineral Board be obligated to refund any consideration paid by the Lessor prior to such modification, cancellation, or abrogation, including, but not limited to, bonuses, rentals and royalties.

NOTE: The Office of Mineral Resources will require a minimum bonus of \$230 per acre and a minimum royalty of 23%.

NOTE: The State of Louisiana does hereby reserve, and this lease shall be subject to, the imprescriptible right of surface use in the nature of a servitude in favor of the Department of Natural Resources, including its Offices and Commissions, for the sole purpose of implementing, constructing, servicing and maintaining approved coastal zone management and/or restoration projects. Utilization of any and all rights derived under this lease by the mineral lessee, its agents, successors or assigns, shall not interfere with nor hinder the reasonable surface use by the

Department of Natural Resources, its Offices or Commissions, as herein above reserved.

NOTE: The Department of Wildlife and Fisheries has designated certain areas in the coastal waters of the State of Louisiana as Oyster Seed Bed Areas. The exact location of those Seed Bed Areas must be obtained from the Department of Wildlife and Fisheries and any work done under a mineral lease from the State of Louisiana may necessarily be conducted in conformity with the rules and regulations promulgated by the said Department of Wildlife and Fisheries for Oyster Seed Bed Areas.

Applicant: TRINITY ENERGY SERVICES, LLC

Bidder	Cash Payment	Price/ Acre	Rental	Oil	Gas	Other

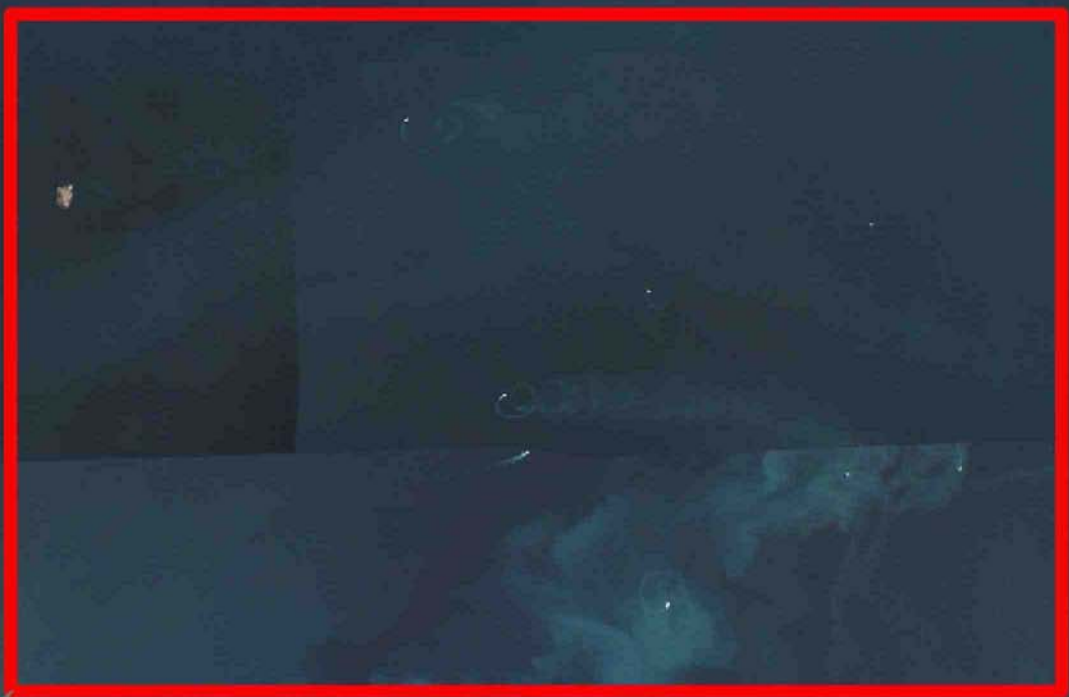
**Legend**  
07050024  
DOQA2004

ST BERNARD PARISH

BRETON SOUND CHANDELEUR SOUND AREA ADDITION, REVISED

THREE MILE BAY

P.O.B.



**TRACT 39016 - Portion of Blocks 45, 46, 47, and 48, Chandeleur Sound Addition Area, Revised, St. Bernard Parish, Louisiana**

All of the lands now or formerly constituting the beds and bottoms of all water bodies of every nature and description the title of which vests in the State of Louisiana, together with all islands arising therein and other lands formed by accretion or by reliction, where allowed by law, excepting tax adjudicated lands, and not presently under mineral lease on May 9, 2007, situated in St. Bernard Parish, Louisiana, and more particularly described as follows: Beginning at a point within Block 46, Chandeleur Sound Area Addition, Revised, having Coordinates of X = 2,630,118.00 and Y = 493,738.00; thence East 6,361.50 feet to a point within Block 45, Chandeleur Sound Area Addition, Revised, having Coordinates of X = 2,636,479.50 and Y = 493,738.00; thence South 13,316.00 feet to a point within Block 48, Chandeleur Sound Area Addition, Revised, having Coordinates of X = 2,636,479.50 and Y = 480,422.00; thence West 6,361.50 feet to a point within Block 47, Chandeleur Sound Area Addition, Revised having Coordinates of X = 2,630,118.00 and Y = 480,422.00; thence North 13,316.00 feet to the point of beginning, containing approximately **1,818 acres**, all as more particularly outlined on a plat on file in the Office of Mineral Resources, Department of Natural Resources. All bearings, distances and coordinates are based on Louisiana Coordinate System of 1927, (North or South Zone), where applicable.

NOTE: The above description of the Tract nominated for lease has been provided and corrected, where required, exclusively by the nomination party. Any mineral lease selected from this Tract and awarded by the Louisiana State Mineral Board shall be without warranty of any kind, either express, implied, or statutory, including, but not limited to, the implied warranties of merchantability and fitness for a particular purpose. Should the mineral lease awarded by the Louisiana State Mineral Board be subsequently modified, cancelled or abrogated due to the existence of conflicting leases, operating agreements, private claims or other future obligations or conditions which may affect all or any portion of the leased Tract, it shall not relieve the Lessee of the obligation to pay any bonus due thereon to the Louisiana State Mineral Board, nor shall the Louisiana State Mineral Board be obligated to refund any consideration paid by the Lessor prior to such modification, cancellation, or abrogation, including, but not limited to, bonuses, rentals and royalties.

NOTE: The Office of Mineral Resources will require a minimum bonus of \$230 per acre and a minimum royalty of 23%.

NOTE: The State of Louisiana does hereby reserve, and this lease shall be subject to, the imprescriptible right of surface use in the nature of a servitude in favor of the Department of Natural Resources, including its Offices and Commissions, for the sole purpose of implementing, constructing, servicing and maintaining approved coastal zone management and/or restoration projects. Utilization of any and all rights derived under this lease by the mineral lessee, its agents, successors or assigns,

shall not interfere with nor hinder the reasonable surface use by the Department of Natural Resources, its Offices or Commissions, as herein above reserved.

NOTE: The Department of Wildlife and Fisheries has designated certain areas in the coastal waters of the State of Louisiana as Oyster Seed Bed Areas. The exact location of those Seed Bed Areas must be obtained from the Department of Wildlife and Fisheries and any work done under a mineral lease from the State of Louisiana may necessarily be conducted in conformity with the rules and regulations promulgated by the said Department of Wildlife and Fisheries for Oyster Seed Bed Areas.

Applicant: TRINITY ENERGY SERVICES, LLC

Bidder	Cash Payment	Price/ Acre	Rental	Oil	Gas	Other

ST BERNARD PARISH

CHANDELEUR SOUND AREA ADDITION, REVISED

INDIAN MOUND BAY

P.O.B.

THREE MILE BAY

BAY BOUDREAU

