

TRACT 38326 - Portion of Block 9, Main Pass Area, Revised, Plaquemines and St. Bernard Parishes, Louisiana

All of the lands now or formerly constituting the beds and bottoms of all water bodies of every nature and description the title of which vests in the State of Louisiana, together with all islands arising therein and other lands formed by accretion or by reliction, where allowed by law, excepting tax adjudicated lands, and not presently under mineral lease and cross hatched on May 10, 2006, situated in Plaquemines and St. Bernard Parishes, Louisiana, and more particularly described as follows: Beginning at the Northwest Corner of Block 9, Main Pass Area, having Coordinates of X = 2,620,600.00 and Y = 366,580.00; thence East 8,375.00 feet along the North line of said Block 9 to a point having Coordinates of X = 2,628,975.00 and Y = 366,580.00; thence South 14,750.00 feet to a point on the South line of said Block 9, having Coordinates of X = 2,628,975.00 and Y = 351,830.00; thence West 8,375.00 feet along said South line of Block 9 to its Southwest Corner, having Coordinates of X = 2,620,600.00 and Y = 351,830.00; thence North 4,261.12 feet along the West line of said Block 9 to a point on the boundary of State Lease No. 16633, having Coordinates of X = 2,620,600.00 and Y = 356,091.12; thence along said boundary of State Lease No. 16633 the following courses: East 4,249.25 feet; North 2,050.00 feet; West 2,299.25 feet; North 1,500.00 feet; West 1,950.00 feet to a point on said West line of Block 9, having Coordinates of X = 2,620,600.00 and Y = 359,641.13; thence North 3,958.87 feet along said West line of Block 9 to a point on the boundary of State Lease No. 17451, having Coordinates of X = 2,620,600.00 and Y = 363,600.00; thence along said boundary of State Lease No. 17451 the following courses: South 56 degrees 15 minutes 00 seconds East 5,291.84 feet; North 64 degrees 34 minutes 55 seconds East 3,797.60 feet; North 2,800.00 feet; West 7,830.00 feet to a point on said West line of Block 9, having Coordinates of X = 2,620,600.00 and Y = 365,090.00; thence North 1,490.00 feet along said West line of Block 9 to the point of beginning, containing approximately **1,985.12 acres**, all as more particularly outlined on a plat on file in the Office of Mineral Resources, Department of Natural Resources. All bearings, distances and coordinates are based on Louisiana Coordinate System of 1927, (North or South Zone), where applicable.

NOTE: The above description of the Tract nominated for lease has been provided and corrected, where required, exclusively by the nomination party. Any mineral lease selected from this Tract and awarded by the Louisiana State Mineral Board shall be without warranty of any kind, either express, implied, or statutory, including, but not limited to, the implied warranties of merchantability and fitness for a particular purpose. Should the mineral lease awarded by the Louisiana State Mineral Board be subsequently modified, cancelled or abrogated due to the existence of conflicting leases, operating agreements, private claims or other future obligations or conditions which may affect all or any portion of the leased Tract, it shall not relieve the Lessee of the obligation to pay any bonus due thereon to the Louisiana State Mineral Board, nor shall the Louisiana State Mineral Board be obligated to refund any consideration

paid by the Lessor prior to such modification, cancellation, or abrogation, including, but not limited to, bonuses, rentals and royalties.

NOTE: The State of Louisiana does hereby reserve, and this lease shall be subject to, the imprescriptible right of surface use in the nature of a servitude in favor of the Department of Natural Resources, including its Offices and Commissions, for the sole purpose of implementing, constructing, servicing and maintaining approved coastal zone management and/or restoration projects. Utilization of any and all rights derived under this lease by the mineral lessee, its agents, successors or assigns, shall not interfere with nor hinder the reasonable surface use by the Department of Natural Resources, its Offices or Commissions, as herein above reserved.

NOTE: It appears, according to our records, that a portion of this Tract is located within the restrictive safety fairway area as set out by the Corps of Engineers, U.S. Army and/or the restrictive anchorage area as set out by the U.S. Coast Guard.

Applicant: MCGINTY-DURHAM, INC.

Bidder	Cash Payment	Price/ Acre	Rental	Oil	Gas	Other

Legend

- 06050047
- Blocks
- Active_Leases
- Counties

BRETON SOUND AREA

BRETON SOUND

MAIN PASS AREA, REVISED

P.O.B.

MP0009

ST BERNARD PARISH

PLAQUEMINES PARISH

SL 17451

SL 16633

SL 16172



TRACT 38327 - Portion of Block 10, Main Pass Area, Revised, St. Bernard Parish, Louisiana

All of the lands now or formerly constituting the beds and bottoms of all water bodies of every nature and description the title of which vests in the State of Louisiana, together with all islands arising therein and other lands formed by accretion or by reliction, where allowed by law, excepting tax adjudicated lands, and not presently under mineral lease and cross hatched on May 10, 2006, situated in St. Bernard Parish, Louisiana, and more particularly described as follows: Beginning at the Northwest Corner of Block 10, Main Pass Area, having Coordinates of X = 2,605,850.00 and Y = 366,580.00; thence East 14,750.00 feet along the North line of said Block 10 to its Northeast Corner, having Coordinates of X = 2,620,600.00 and Y = 366,580.00; thence South 2,494.11 feet along the East line of said Block 10 to a point having Coordinates of X = 2,620,600.00 and Y = 364,085.89, said point being also on the boundary of State Lease No. 16172, as amended; thence along said boundary of State Lease No. 16172 the following courses: West 7,375.00 feet to a point having Coordinates of X = 2,613,225.00 and Y = 364,085.89; South 3,810.40 feet to a point having Coordinates of X = 2,613,225.00 and Y = 360,275.49; East 3,025.00 feet to a point having Coordinates of X = 2,616,250.00 and Y = 360,275.49; South 1,070.49 feet to a point having Coordinates of X = 2,616,250.00 and Y = 359,205.00; thence West 10,400.00 feet to a point on the West line of said Block 10, having Coordinates of X = 2,605,850.00 and Y = 359,205.00; thence North 7,375.00 feet along said West line of Block 10 to the point of beginning, containing approximately **1,745.25 acres**, all as more particularly outlined on a plat on file in the Office of Mineral Resources, Department of Natural Resources. All bearings, distances and coordinates are based on Louisiana Coordinate System of 1927, (North or South Zone), where applicable.

NOTE: The above description of the Tract nominated for lease has been provided and corrected, where required, exclusively by the nomination party. Any mineral lease selected from this Tract and awarded by the Louisiana State Mineral Board shall be without warranty of any kind, either express, implied, or statutory, including, but not limited to, the implied warranties of merchantability and fitness for a particular purpose. Should the mineral lease awarded by the Louisiana State Mineral Board be subsequently modified, cancelled or abrogated due to the existence of conflicting leases, operating agreements, private claims or other future obligations or conditions which may affect all or any portion of the leased Tract, it shall not relieve the Lessee of the obligation to pay any bonus due thereon to the Louisiana State Mineral Board, nor shall the Louisiana State Mineral Board be obligated to refund any consideration paid by the Lessor prior to such modification, cancellation, or abrogation, including, but not limited to, bonuses, rentals and royalties.

NOTE: The State of Louisiana does hereby reserve, and this lease shall be subject to, the imprescriptible right of surface use in the nature of a servitude in favor of the Department of Natural Resources, including its

Offices and Commissions, for the sole purpose of implementing, constructing, servicing and maintaining approved coastal zone management and/or restoration projects. Utilization of any and all rights derived under this lease by the mineral lessee, its agents, successors or assigns, shall not interfere with nor hinder the reasonable surface use by the Department of Natural Resources, its Offices or Commissions, as herein above reserved.

NOTE: It appears, according to our records, that a portion of this Tract is located within the restrictive safety fairway area as set out by the Corps of Engineers, U.S. Army and/or the restrictive anchorage area as set out by the U.S. Coast Guard.

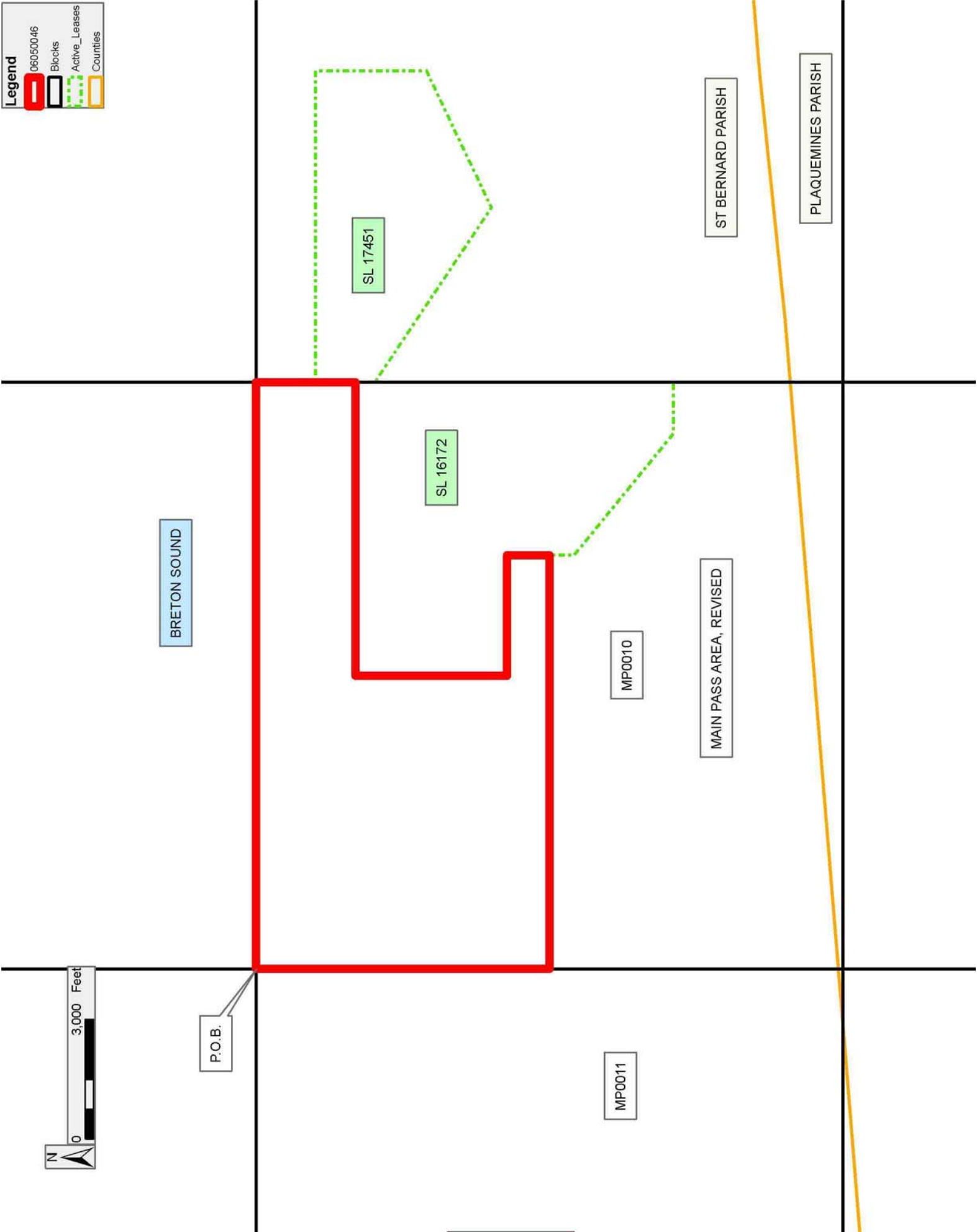
NOTE: The Department of Wildlife and Fisheries has designated certain areas in the coastal waters of the State of Louisiana as Oyster Seed Bed Areas. The exact location of those Seed Bed Areas must be obtained from the Department of Wildlife and Fisheries and any work done under a mineral lease from the State of Louisiana may necessarily be conducted in conformity with the rules and regulations promulgated by the said Department of Wildlife and Fisheries for Oyster Seed Bed Areas.

Applicant: MCGINTY-DURHAM, INC.

Bidder	Cash Payment	Price/ Acre	Rental	Oil	Gas	Other

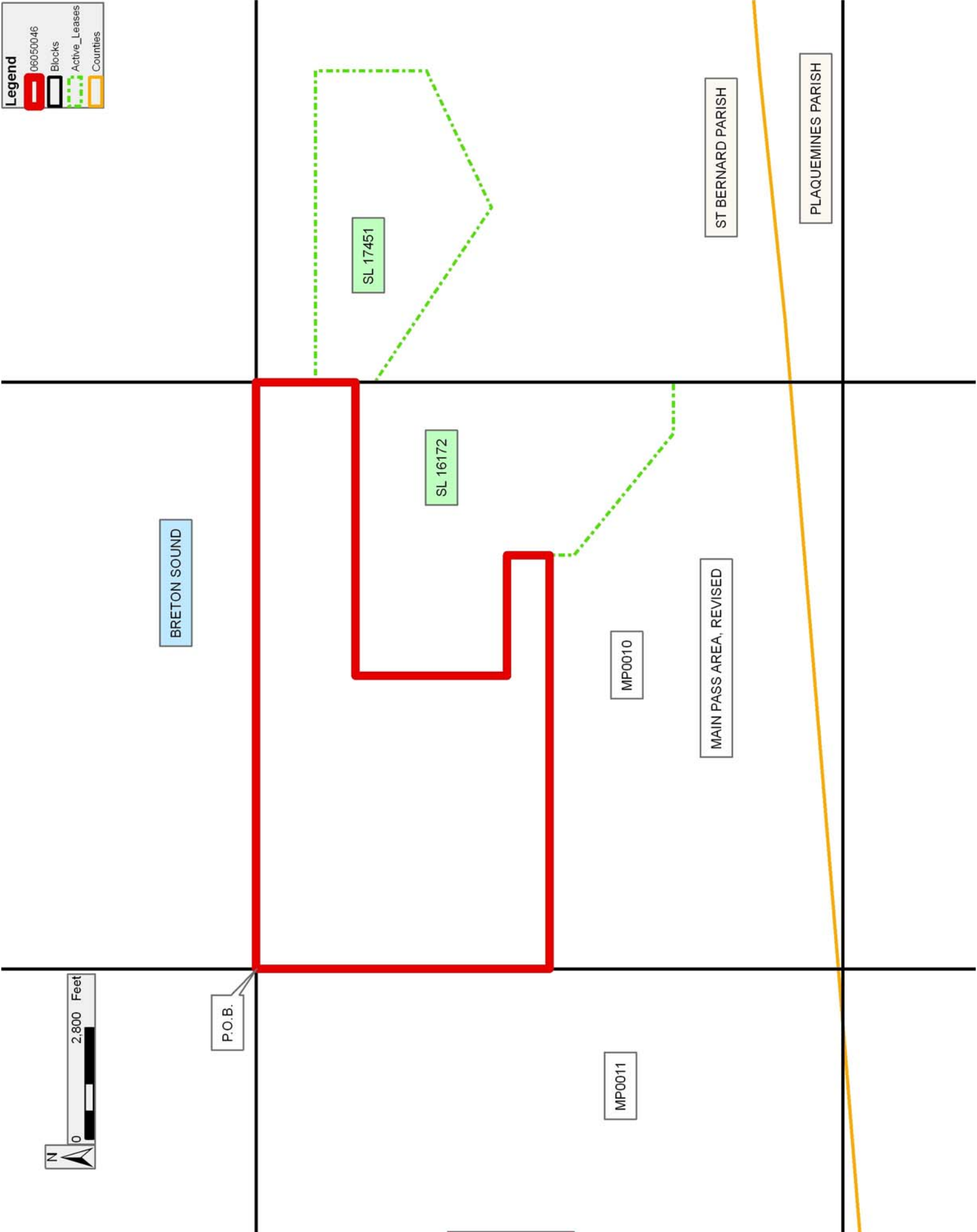
Legend

- 06050046
- Blocks
- Active_Leases
- Counties



Legend

- 06050046
- Blocks
- Active_Leases
- Counties



TRACT 38328 - Portion of Block 15, Breton Sound Area, Plaquemines and St. Bernard Parishes, Louisiana

All of the lands now or formerly constituting the beds and bottoms of all water bodies of every nature and description the title of which vests in the State of Louisiana, together with all islands arising therein and other lands formed by accretion or by reliction, where allowed by law, excepting tax adjudicated lands, and not presently under mineral lease and cross hatched on May 10, 2006, situated in Plaquemines and St. Bernard Parishes, Louisiana, and more particularly described as follows: Beginning at the Southeast Corner of Block 15, Breton Sound Area, having Coordinates of X = 2,664,850.00 and Y = 351,830.00; thence West 14,750.00 feet along the South line of said Block 15 to its Southwest Corner, having Coordinates of X = 2,650,100.00 and Y = 351,830.00; thence North 7,375.00 feet along the West line of said Block 15 to a point having Coordinates of X = 2,650,100.00 and Y = 359,205.00; thence East 14,750.00 feet to a point on the East line of said Block 15, having Coordinates of X = 2,664,850.00 and Y = 359,205.00; thence South 7,375.00 feet along said East line of Block 15 to the point of beginning, containing approximately **2,497.27 acres**, all as more particularly outlined on a plat on file in the Office of Mineral Resources, Department of Natural Resources. All bearings, distances and coordinates are based on Louisiana Coordinate System of 1927, (North or South Zone), where applicable.

NOTE: The above description of the Tract nominated for lease has been provided and corrected, where required, exclusively by the nomination party. Any mineral lease selected from this Tract and awarded by the Louisiana State Mineral Board shall be without warranty of any kind, either express, implied, or statutory, including, but not limited to, the implied warranties of merchantability and fitness for a particular purpose. Should the mineral lease awarded by the Louisiana State Mineral Board be subsequently modified, cancelled or abrogated due to the existence of conflicting leases, operating agreements, private claims or other future obligations or conditions which may affect all or any portion of the leased Tract, it shall not relieve the Lessee of the obligation to pay any bonus due thereon to the Louisiana State Mineral Board, nor shall the Louisiana State Mineral Board be obligated to refund any consideration paid by the Lessor prior to such modification, cancellation, or abrogation, including, but not limited to, bonuses, rentals and royalties.

NOTE: The State of Louisiana does hereby reserve, and this lease shall be subject to, the imprescriptible right of surface use in the nature of a servitude in favor of the Department of Natural Resources, including its Offices and Commissions, for the sole purpose of implementing, constructing, servicing and maintaining approved coastal zone management and/or restoration projects. Utilization of any and all rights derived under this lease by the mineral lessee, its agents, successors or assigns, shall not interfere with nor hinder the reasonable surface use by the Department of Natural Resources, its Offices or Commissions, as herein above reserved.

NOTE: It appears, according to our records, that a portion of this Tract is located within the restrictive safety fairway area as set out by the Corps of Engineers, U.S. Army and/or the restrictive anchorage area as set out by the U.S. Coast Guard.

Applicant: MCGINTY-DURHAM, INC.

Bidder	Cash Payment	Price/ Acre	Rental	Oil	Gas	Other

Legend

 06050053

 Blocks

 Counties



TRACT 38329 - Portion of Block 16, Breton Sound Area, Plaquemines and St. Bernard Parishes, Louisiana

All of the lands now or formerly constituting the beds and bottoms of all water bodies of every nature and description the title of which vests in the State of Louisiana, together with all islands arising therein and other lands formed by accretion or by reliction, where allowed by law, excepting tax adjudicated lands, and not presently under mineral lease and cross hatched on May 10, 2006, situated in Plaquemines and St. Bernard Parishes, Louisiana, and more particularly described as follows: Beginning at the Southeast Corner of Block 16, Breton Sound Area, having Coordinates of X = 2,650,100.00 and Y = 351,830.00; thence West 14,750.00 feet along the South line of Block 16 to its Southwest Corner, having Coordinates of X = 2,635,350.00 and Y = 351,830.00; thence North 7,375.00 feet along the West line of said Block 16 to a point having Coordinates of X = 2,635,350.00 and Y = 359,205.00; thence East 7,402.46 feet to a point having Coordinates of X = 2,642,752.46 and Y = 359,205.00, said point being also on the boundary of State Lease No. 17303; thence along said boundary of State Lease No. 17303 the following courses: South 32 degrees 45 minutes 20 seconds West 4,312.79 feet to a point having Coordinates of X = 2,640,419.00 and Y = 355,578.00; South 54 degrees 49 minutes 05 seconds East 4,793.68 feet to a point having Coordinates of X = 2,644,337.00 and Y = 352,816.00; North 31 degrees 14 minutes 49 seconds East 5,205.05 feet to a point having Coordinates of X = 2,647,037.00 and Y = 357,266.00; North 58 degrees 18 minutes 05 seconds West 3,690.16 feet to a point having Coordinates of X = 2,643,897.33 and Y = 359,205.00; thence East 6,202.67 feet to a point on the East line of said Block 16, having Coordinates of X = 2,650,100.00 and Y = 359,205.00; thence South 7,375.00 feet along said East line of Block 16 to the point of beginning, containing approximately **1,955.76 acres**, all as more particularly outlined on a plat on file in the Office of Mineral Resources, Department of Natural Resources. All bearings, distances and coordinates are based on Louisiana Coordinate System of 1927, (North or South Zone), where applicable.

NOTE: The above description of the Tract nominated for lease has been provided and corrected, where required, exclusively by the nomination party. Any mineral lease selected from this Tract and awarded by the Louisiana State Mineral Board shall be without warranty of any kind, either express, implied, or statutory, including, but not limited to, the implied warranties of merchantability and fitness for a particular purpose. Should the mineral lease awarded by the Louisiana State Mineral Board be subsequently modified, cancelled or abrogated due to the existence of conflicting leases, operating agreements, private claims or other future obligations or conditions which may affect all or any portion of the leased Tract, it shall not relieve the Lessee of the obligation to pay any bonus due thereon to the Louisiana State Mineral Board, nor shall the Louisiana State Mineral Board be obligated to refund any consideration paid by the Lessor prior to such modification, cancellation, or abrogation, including, but not limited to, bonuses, rentals and royalties.

NOTE: The State of Louisiana does hereby reserve, and this lease shall be subject to, the imprescriptible right of surface use in the nature of a servitude in favor of the Department of Natural Resources, including its Offices and Commissions, for the sole purpose of implementing, constructing, servicing and maintaining approved coastal zone management and/or restoration projects. Utilization of any and all rights derived under this lease by the mineral lessee, its agents, successors or assigns, shall not interfere with nor hinder the reasonable surface use by the Department of Natural Resources, its Offices or Commissions, as herein above reserved.

NOTE: It appears, according to our records, that a portion of this Tract is located within the restrictive safety fairway area as set out by the Corps of Engineers, U.S. Army and/or the restrictive anchorage area as set out by the U.S. Coast Guard.

Applicant: MCGINTY-DURHAM, INC.

Bidder	Cash Payment	Price/ Acre	Rental	Oil	Gas	Other

Legend

- Blocks
- Active_Leases
- Counties
- 06050052



TRACT 38330 - Portion of Block 10, Main Pass Area, Revised, Plaquemines and St. Bernard Parishes, Louisiana

All of the lands now or formerly constituting the beds and bottoms of all water bodies of every nature and description the title of which vests in the State of Louisiana, together with all islands arising therein and other lands formed by accretion or by reliction, where allowed by law, excepting tax adjudicated lands, and not presently under mineral lease and cross hatched on May 10, 2006, situated in Plaquemines and St. Bernard Parishes, Louisiana, and more particularly described as follows: Beginning at the Southeast Corner of Block 10, Main Pass Area, having Coordinates of X = 2,620,600.00 and Y = 351,830.00; thence West 14,750.00 feet along the South line of said Block 10 to its Southwest Corner, having Coordinates of X = 2,605,850.00 and Y = 351,830.00; thence North 7,375.00 feet along the West line of said Block 10 to a point having Coordinates of X = 2,605,850.00 and Y = 359,205.00; thence East 10,400.00 feet to a point having Coordinates of X = 2,616,250.00 and Y = 359,205.00, said point being also on the boundary of State Lease No. 16172, as amended; thence along said boundary of State Lease No. 16172 the following courses: South 613.87 feet to a point having Coordinates of X = 2,616,250.00 and Y = 358,591.13; South 50 degrees 48 minutes 23 seconds East 3,956.05 feet to a point having Coordinates of X = 2,619,316.00 and Y = 356,091.13; East 1,284.00 feet to a point on the East line of said Block 10, having Coordinates of X = 2,620,600.00 and Y = 356,091.12; thence South 4,261.12 feet along said East line of Block 10 to the point of beginning, containing approximately **2,274.30 acres**, all as more particularly outlined on a plat on file in the Office of Mineral Resources, Department of Natural Resources. All bearings, distances and coordinates are based on Louisiana Coordinate System of 1927, (North or South Zone), where applicable.

NOTE: The above description of the Tract nominated for lease has been provided and corrected, where required, exclusively by the nomination party. Any mineral lease selected from this Tract and awarded by the Louisiana State Mineral Board shall be without warranty of any kind, either express, implied, or statutory, including, but not limited to, the implied warranties of merchantability and fitness for a particular purpose. Should the mineral lease awarded by the Louisiana State Mineral Board be subsequently modified, cancelled or abrogated due to the existence of conflicting leases, operating agreements, private claims or other future obligations or conditions which may affect all or any portion of the leased Tract, it shall not relieve the Lessee of the obligation to pay any bonus due thereon to the Louisiana State Mineral Board, nor shall the Louisiana State Mineral Board be obligated to refund any consideration paid by the Lessor prior to such modification, cancellation, or abrogation, including, but not limited to, bonuses, rentals and royalties.

NOTE: The State of Louisiana does hereby reserve, and this lease shall be subject to, the imprescriptible right of surface use in the nature of a servitude in favor of the Department of Natural Resources, including its

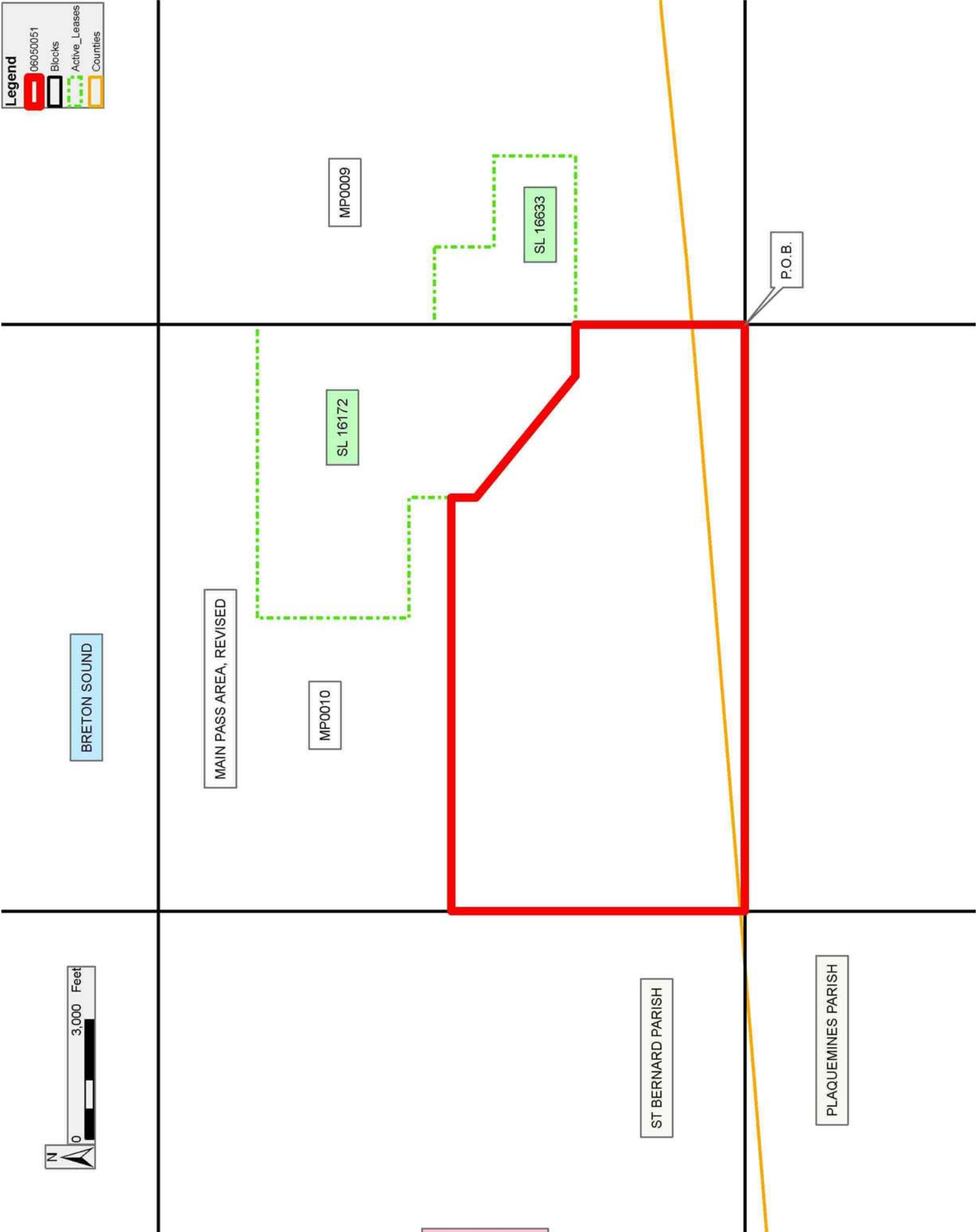
Offices and Commissions, for the sole purpose of implementing, constructing, servicing and maintaining approved coastal zone management and/or restoration projects. Utilization of any and all rights derived under this lease by the mineral lessee, its agents, successors or assigns, shall not interfere with nor hinder the reasonable surface use by the Department of Natural Resources, its Offices or Commissions, as herein above reserved.

Applicant: MCGINTY-DURHAM, INC.

Bidder	Cash Payment	Price/ Acre	Rental	Oil	Gas	Other

Legend

- 06050051
- Blocks
- Active_Leases
- Counties



TRACT 38331 - Jefferson Parish, Louisiana

All of the lands now or formerly constituting the beds and bottoms of all water bodies of every nature and description the title of which vests in the State of Louisiana, together with all islands arising therein and other lands formed by accretion or by reliction, where allowed by law, excepting tax adjudicated lands, and not presently under mineral lease and cross hatched on May 10, 2006, situated in Jefferson Parish, Louisiana, and more particularly described as follows: Beginning at a Southeast corner of State Lease No. 18010, also being a point on the North line of State Lease No. 2383, as amended, having Coordinates of X = 2,378,526.26 and Y = 309,330.03; thence Northeasterly approximately 2,492 feet along the boundary of said State Lease No. 18010 to the Southwest corner of State Lease No. 2453, as amended, having a Coordinate of X = 2,379,478.60; thence Easterly, Northerly and Easterly along the Southern boundary of said State Lease No. 2453 to its Southeast corner having Coordinates of X = 2,385,310.49 and Y = 312,158.29; thence South 18 degrees 29 minutes 22 seconds East 826.13 feet to the Northwest corner of State Lease No. 10215, as amended, having Coordinates of X = 2,385,572.48 and Y = 311,374.80; thence South 00 degrees 35 minutes 15 seconds East 2,044.88 feet along the West boundary of said State Lease No. 10215 to the Northeast corner of said State Lease No. 2383 having Coordinates of X = 2,385,593.45 and Y = 309,330.03; thence West 7,067.19 feet along the North boundary of said State Lease No. 2383 to the point of beginning, **LESS AND EXCEPT** all that portion of State Lease No. 2453, as amended, that may be within the above described tract, containing approximately **387 acres**, all as more particularly outlined on a plat on file in the Office of Mineral Resources, Department of Natural Resources. All bearings, distances and coordinates are based on Louisiana Coordinate System of 1927, (North or South Zone), where applicable.

NOTE: The above description of the Tract nominated for lease has been provided and corrected, where required, exclusively by the nomination party. Any mineral lease selected from this Tract and awarded by the Louisiana State Mineral Board shall be without warranty of any kind, either express, implied, or statutory, including, but not limited to, the implied warranties of merchantability and fitness for a particular purpose. Should the mineral lease awarded by the Louisiana State Mineral Board be subsequently modified, cancelled or abrogated due to the existence of conflicting leases, operating agreements, private claims or other future obligations or conditions which may affect all or any portion of the leased Tract, it shall not relieve the Lessee of the obligation to pay any bonus due thereon to the Louisiana State Mineral Board, nor shall the Louisiana State Mineral Board be obligated to refund any consideration paid by the Lessor prior to such modification, cancellation, or abrogation, including, but not limited to, bonuses, rentals and royalties.

NOTE: The State of Louisiana does hereby reserve, and this lease shall be subject to, the imprescriptible right of surface use in the nature of a servitude in favor of the Department of Natural Resources, including its

Offices and Commissions, for the sole purpose of implementing, constructing, servicing and maintaining approved coastal zone management and/or restoration projects. Utilization of any and all rights derived under this lease by the mineral lessee, its agents, successors or assigns, shall not interfere with nor hinder the reasonable surface use by the Department of Natural Resources, its Offices or Commissions, as herein above reserved.

NOTE: The Department of Wildlife and Fisheries has designated certain areas in the coastal waters of the State of Louisiana as Oyster Seed Bed Areas. The exact location of those Seed Bed Areas must be obtained from the Department of Wildlife and Fisheries and any work done under a mineral lease from the State of Louisiana may necessarily be conducted in conformity with the rules and regulations promulgated by the said Department of Wildlife and Fisheries for Oyster Seed Bed Areas.

Applicant: GRAVES & CO.

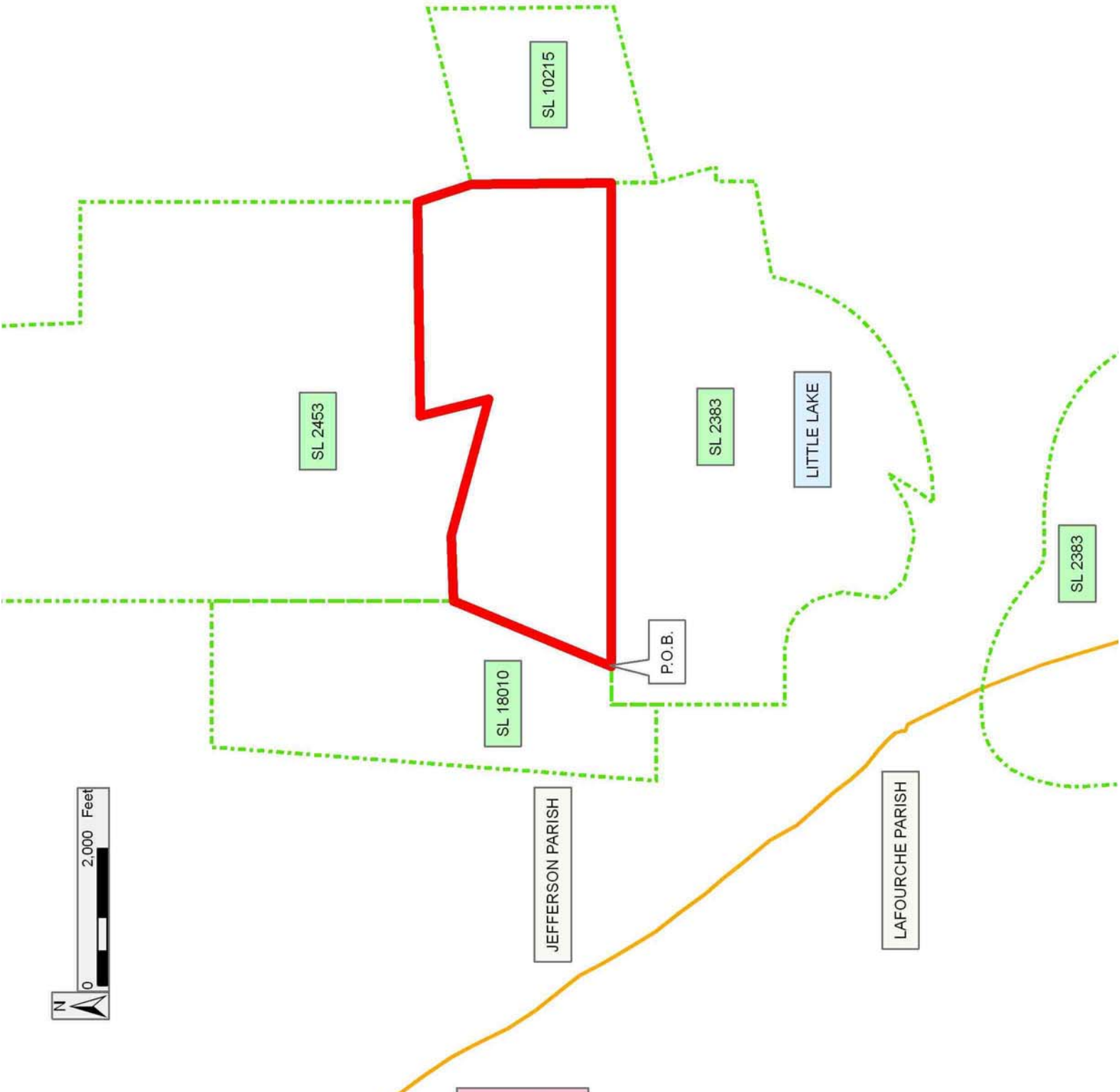
Bidder	Cash Payment	Price/ Acre	Rental	Oil	Gas	Other

Legend

06050001

Active_Leases

Counties



TRACT 38332 - Portion of Block 31, Main Pass Area, Revised, Plaquemines Parish, Louisiana

All of the lands now or formerly constituting the beds and bottoms of all water bodies of every nature and description the title of which vests in the State of Louisiana, together with all islands arising therein and other lands formed by accretion or by reliction, where allowed by law, excepting tax adjudicated lands, and not presently under mineral lease and cross hatched on May 10, 2006, situated in Plaquemines Parish, Louisiana, and more particularly described as follows: Beginning at a point on the north line of said Block 31 having Coordinates of X = 2,627,975.00 and Y = 307,580.00; thence East 7,375.00 feet along the north line of said Block 31 to its Northeast corner having Coordinates of X = 2,635,350.00 and Y = 307,580.00; thence South 5,673.61 feet along the east line of said Block 31 to the Northeast corner of State Lease No. 12002, as amended having Coordinates of X = 2,635,350.00 and Y = 301,906.39; thence along the boundary of said State Lease No. 12002 the following: South 78 degrees 33 minutes 21 seconds West 881.07 feet, South 75 degrees 09 minutes 03 seconds West 593.20 feet, South 67 degrees 31 minutes 25 seconds West 598.99 feet, South 62 degrees 46 minutes 18 seconds West 618.96 feet, South 54 degrees 53 minutes 40 seconds West 979.30 feet, South 50 degrees 08 minutes 29 seconds West 3,369.94, South 1,514.40 and East 5,928.82 feet to its Southeast corner and a point on the east line of said Block 31 having Coordinates of X = 2,635,350.00 and Y = 296,830.00; thence South 3,762.00 feet along the east line of said Block 31 to the Northeast corner of State Lease No. 18011 having Coordinates of X = 2,635,350.00 and Y = 293,068.00; thence along the boundary of said State Lease No. 18011 the following: North 63 degrees 07 minutes 03 seconds West 2,501.30 feet to a point having Coordinates of X = 2,633,119.00 and Y = 294,199.00, South 44 degrees 10 minutes 52 seconds West 1,533.87 feet to a point having Coordinates of X = 2,632,050.00 and Y = 293,099.00 and South 16 degrees 19 minutes 24 seconds East 280.30 feet to its Southwest corner and a point on the south line of said Block 31 having Coordinates of X = 2,632,128.78 and Y = 292,830.00; thence West 4,153.78 feet along the south line of said Block 31 to a point having Coordinates of X = 2,627,975.00 and Y = 292,830.00; thence North 14,750.00 feet to the Point of Beginning; containing approximately **1,932.80 acres**, all as more particularly outlined on a plat on file in the Office of Mineral Resources, Department of Natural Resources. All bearings, distances and coordinates are based on Louisiana Coordinate System of 1927, (North or South Zone), where applicable.

NOTE: The above description of the Tract nominated for lease has been provided and corrected, where required, exclusively by the nomination party. Any mineral lease selected from this Tract and awarded by the Louisiana State Mineral Board shall be without warranty of any kind, either express, implied, or statutory, including, but not limited to, the implied warranties of merchantability and fitness for a particular purpose. Should the mineral lease awarded by the Louisiana State Mineral Board be subsequently modified, cancelled or abrogated due to the

existence of conflicting leases, operating agreements, private claims or other future obligations or conditions which may affect all or any portion of the leased Tract, it shall not relieve the Lessee of the obligation to pay any bonus due thereon to the Louisiana State Mineral Board, nor shall the Louisiana State Mineral Board be obligated to refund any consideration paid by the Lessor prior to such modification, cancellation, or abrogation, including, but not limited to, bonuses, rentals and royalties.

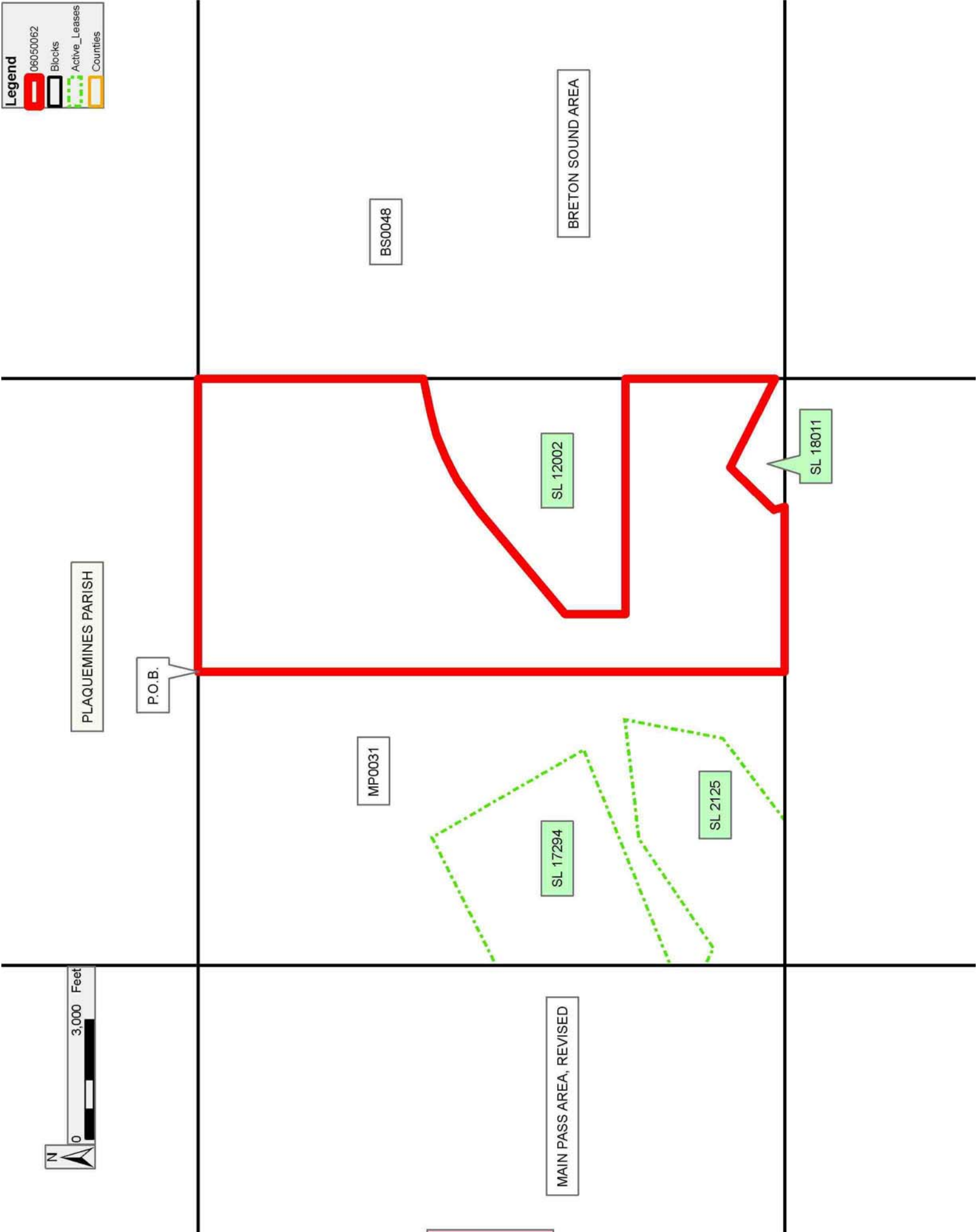
NOTE: The State of Louisiana does hereby reserve, and this lease shall be subject to, the imprescriptible right of surface use in the nature of a servitude in favor of the Department of Natural Resources, including its Offices and Commissions, for the sole purpose of implementing, constructing, servicing and maintaining approved coastal zone management and/or restoration projects. Utilization of any and all rights derived under this lease by the mineral lessee, its agents, successors or assigns, shall not interfere with nor hinder the reasonable surface use by the Department of Natural Resources, its Offices or Commissions, as herein above reserved.

Applicant: CYPRESS ENERGY CORPORATION

Bidder	Cash Payment	Price/ Acre	Rental	Oil	Gas	Other

Legend

- 06050062
- Blocks
- Active_Leases
- Counties



TRACT 38333 - Portion of Block 31, Main Pass Area, Revised, Plaquemines Parish, Louisiana

All of the lands now or formerly constituting the beds and bottoms of all water bodies of every nature and description the title of which vests in the State of Louisiana, together with all islands arising therein and other lands formed by accretion or by reliction, where allowed by law, excepting tax adjudicated lands, and not presently under mineral lease and cross hatched on May 10, 2006, situated in Plaquemines Parish, Louisiana, and more particularly described as follows: Beginning at the Northwest corner of said Block 31 having Coordinates of X = 2,620,600.00 and Y = 307,580.00; thence East 7,375.00 feet along the north line of said Block 31 to a point having Coordinates of X = 2,627,975.00 and Y = 307,580.00; thence South 14,750.00 feet to a point on the south line of said Block 31 having Coordinates of X = 2,627,975.00 and Y = 292,830.00; thence West 3,725.00 feet to the Southeast corner of State Lease No. 2125, as amended having Coordinates of X = 2,624,250.00 and Y = 292,830.00; thence along the boundary of said State Lease No. 2125 the following: North 52 degrees 54 minutes 26 seconds East 2,570.02 feet, North 10 degrees 46 minutes 25 seconds East 2,514.32 feet, South 83 degrees 19 minutes 25 seconds West 3,010.42 feet, South 55 degrees 44 minutes 20 seconds West 3,339.46 feet and North 63 degrees 26 minutes 06 seconds West 469.57 feet to the Northwest corner and a point on the west line of said Block 31 having Coordinates of X = 2,620,600.00 and Y = 294,830.00; thence North 865.00 feet along the west line of said Block 31 to the Southwest corner of State Lease No. 17294, as amended having Coordinates of X = 2,620,600.00 and Y = 295,695.00; thence along the boundary of said State Lease No. 17294 the following: North 68 degrees 01 minutes 53 seconds East 5,840.98 feet to a point having Coordinates of X = 2,626,016.86 and Y = 297,880.10, North 30 degrees 00 minutes 01 seconds West 4,413.81 feet to a point having Coordinates of X = 2,623,809.93 and Y = 301,702.56 and South 63 degrees 15 minutes 14 seconds West 3,594.52 feet to its Northwest corner and a point on the west line of said Block 31 having Coordinates of X = 2,620,600.00 and Y = 300,084.89; thence North 7,495.11 feet to the Point of Beginning; containing approximately **1,653.86 acres**, all as more particularly outlined on a plat on file in the Office of Mineral Resources, Department of Natural Resources. All bearings, distances and coordinates are based on Louisiana Coordinate System of 1927, (North or South Zone), where applicable.

NOTE: The above description of the Tract nominated for lease has been provided and corrected, where required, exclusively by the nomination party. Any mineral lease selected from this Tract and awarded by the Louisiana State Mineral Board shall be without warranty of any kind, either express, implied, or statutory, including, but not limited to, the implied warranties of merchantability and fitness for a particular purpose. Should the mineral lease awarded by the Louisiana State Mineral Board be subsequently modified, cancelled or abrogated due to the existence of conflicting leases, operating agreements, private claims or other future obligations or conditions which may affect all or any portion

of the leased Tract, it shall not relieve the Lessee of the obligation to pay any bonus due thereon to the Louisiana State Mineral Board, nor shall the Louisiana State Mineral Board be obligated to refund any consideration paid by the Lessor prior to such modification, cancellation, or abrogation, including, but not limited to, bonuses, rentals and royalties.

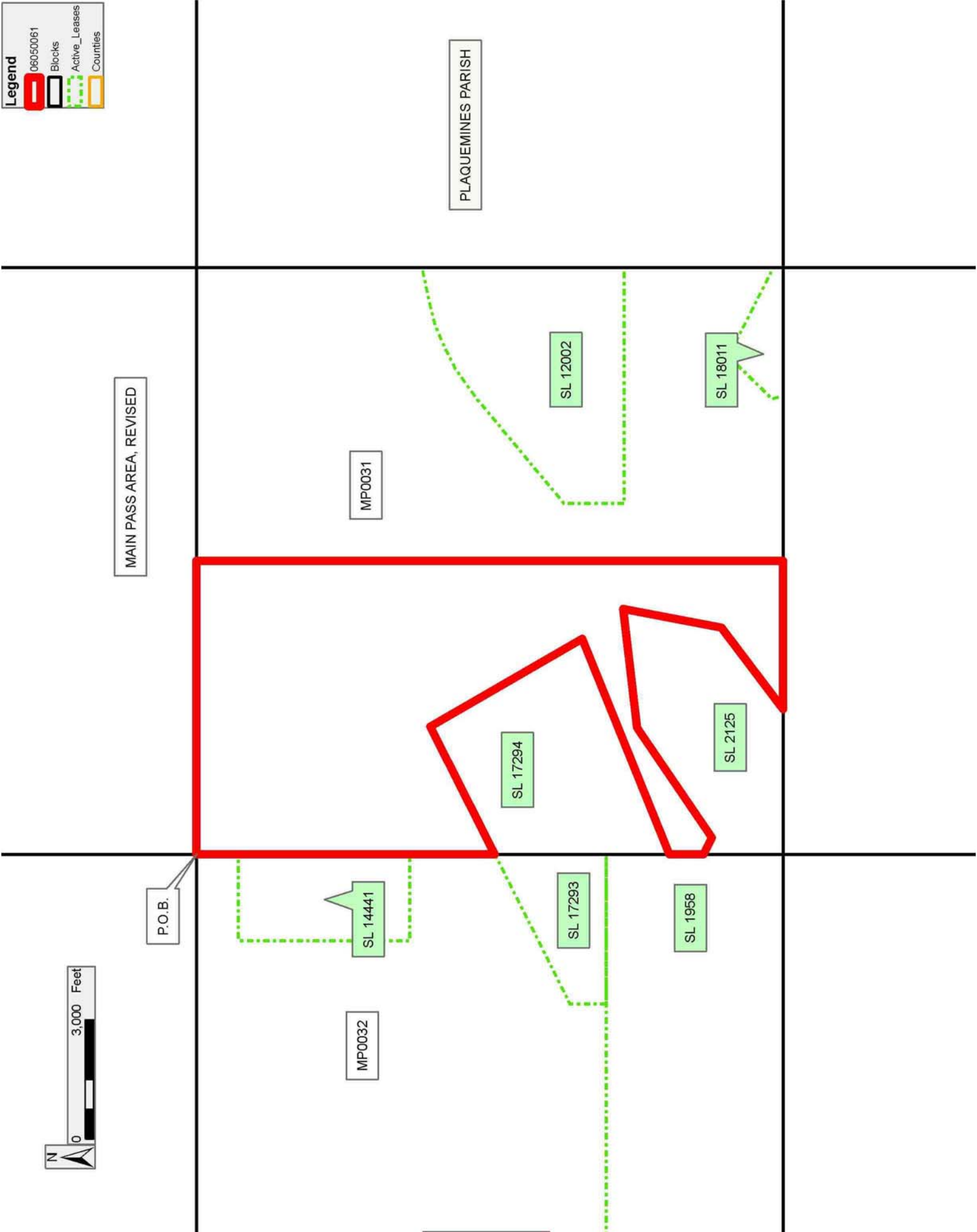
NOTE: The State of Louisiana does hereby reserve, and this lease shall be subject to, the imprescriptible right of surface use in the nature of a servitude in favor of the Department of Natural Resources, including its Offices and Commissions, for the sole purpose of implementing, constructing, servicing and maintaining approved coastal zone management and/or restoration projects. Utilization of any and all rights derived under this lease by the mineral lessee, its agents, successors or assigns, shall not interfere with nor hinder the reasonable surface use by the Department of Natural Resources, its Offices or Commissions, as herein above reserved.

Applicant: CYPRESS ENERGY CORPORATION

Bidder	Cash Payment	Price/ Acre	Rental	Oil	Gas	Other

Legend

- 06050061
- Blocks
- Active_Leases
- Counties



TRACT 38334 - Portion of Block 50, Breton Sound Area, Plaquemines Parish, Louisiana

All of the lands now or formerly constituting the beds and bottoms of all water bodies of every nature and description the title of which vests in the State of Louisiana, together with all islands arising therein and other lands formed by accretion or by reliction, where allowed by law, excepting tax adjudicated lands, and not presently under mineral lease and cross hatched on May 10, 2006, situated in Plaquemines Parish, Louisiana, and more particularly described as follows: Beginning at the Northwest corner of said Block 50 having Coordinates of X = 2,650,100.00 and Y = 292,830.00; thence East 14,750.00 feet along the north line of said Block 50 to its Northeast corner having Coordinates of X = 2,664,850.00 and Y = 292,830.00; thence South 7,375.00 feet along the east line of said Block 50 to a point having Coordinates of X = 2,664,850.00 and Y = 285,455.00; thence West 14,750.00 feet to a point on the west line of said Block 50 having Coordinates of X = 2,650,100.00 and Y = 285,455.00; thence North 3,728.00 feet along the west line of said Block 50 to the Southeast corner of State Lease No. 17239 having Coordinates of X = 2,650,100.00 and Y = 289,183.00; thence continue North 2,757.00 feet along the east line of said State Lease No. 17239 to its Northeast corner having Coordinates of X = 2,650,100.00 and Y = 291,940.00; thence continue North 890.00 feet along the west line of said Block 50 to the Point of Beginning, containing approximately **2,497.27 acres**, all as more particularly outlined on a plat on file in the Office of Mineral Resources, Department of Natural Resources. All bearings, distances and coordinates are based on Louisiana Coordinate System of 1927, (North or South Zone), where applicable.

NOTE: The above description of the Tract nominated for lease has been provided and corrected, where required, exclusively by the nomination party. Any mineral lease selected from this Tract and awarded by the Louisiana State Mineral Board shall be without warranty of any kind, either express, implied, or statutory, including, but not limited to, the implied warranties of merchantability and fitness for a particular purpose. Should the mineral lease awarded by the Louisiana State Mineral Board be subsequently modified, cancelled or abrogated due to the existence of conflicting leases, operating agreements, private claims or other future obligations or conditions which may affect all or any portion of the leased Tract, it shall not relieve the Lessee of the obligation to pay any bonus due thereon to the Louisiana State Mineral Board, nor shall the Louisiana State Mineral Board be obligated to refund any consideration paid by the Lessor prior to such modification, cancellation, or abrogation, including, but not limited to, bonuses, rentals and royalties.

NOTE: The State of Louisiana does hereby reserve, and this lease shall be subject to, the imprescriptible right of surface use in the nature of a servitude in favor of the Department of Natural Resources, including its Offices and Commissions, for the sole purpose of implementing, constructing, servicing and maintaining approved coastal zone management and/or restoration projects. Utilization of any and all rights derived

under this lease by the mineral lessee, its agents, successors or assigns, shall not interfere with nor hinder the reasonable surface use by the Department of Natural Resources, its Offices or Commissions, as herein above reserved.

Applicant: CYPRESS ENERGY CORPORATION

Bidder	Cash Payment	Price/ Acre	Rental	Oil	Gas	Other

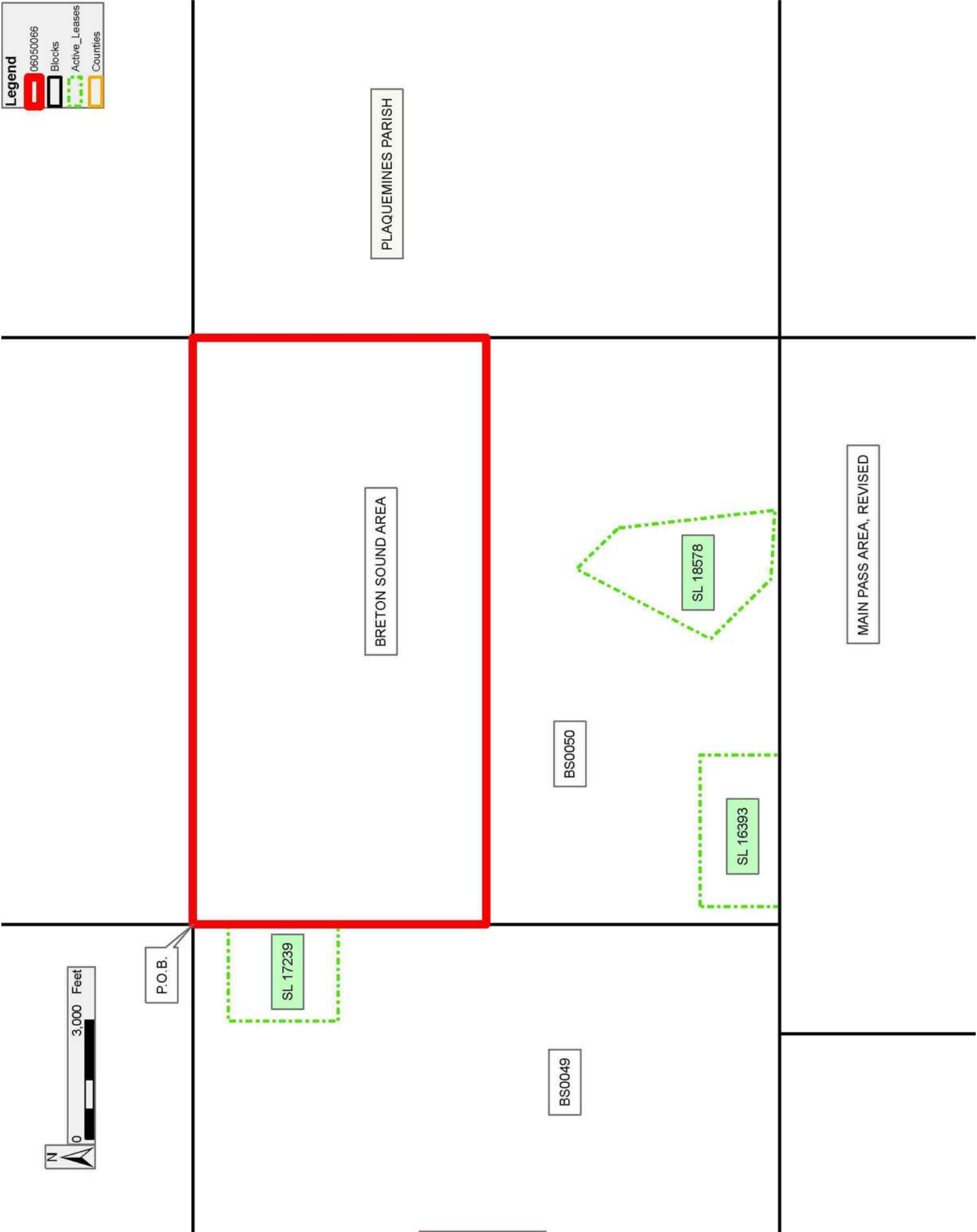
Legend

06050066

Blocks

Active_Leases

Counties



TRACT 38335 - Portion of Block 49, Breton Sound Area, Plaquemines Parish, Louisiana

All of the lands now or formerly constituting the beds and bottoms of all water bodies of every nature and description the title of which vests in the State of Louisiana, together with all islands arising therein and other lands formed by accretion or by reliction, where allowed by law, excepting tax adjudicated lands, and not presently under mineral lease and cross hatched on May 10, 2006, situated in Plaquemines Parish, Louisiana, and more particularly described as follows: Beginning at the Northwest corner of said Block 49 having Coordinates of X = 2,635,350.00 and Y = 292,830.00; thence East 801.00 feet along the north line of said Block 49 to the Northwest corner of State Lease No. 17242 having Coordinates of X = 2,636,151.00 and Y = 292,830.00; thence along the boundary of said State Lease No. 17242 the following: South 1,639.00 feet to a point having Coordinates of X = 2,636,151.00 and Y = 291,191.00, East 2,485.00 feet to a point having Coordinates of X = 2,638,636.00 and Y = 291,191.00 and North 1,639.00 feet to its Northeast corner and a point on the north line of said Block 49 having Coordinates of X = 2,638,636.00 and Y = 292,830.00; thence East 520.00 feet along the north line of said Block 49 to the Northwest corner of State Lease No. 17241 having Coordinates of X = 2,639,156.00 and Y = 292,830.00; thence along the boundary of said State Lease No. 17241 the following: South 4,278.00 feet to a point having Coordinates of X = 2,639,156.00 and Y = 288,552.00, East 3,525.00 feet to a point having Coordinates of X = 2,642,681.00 and Y = 288,552.00 and North 4,278.00 feet to its Northeast corner and a point on the north line of said Block 49 having Coordinates of X = 2,642,681.00 and Y = 292,830.00; thence East 7,419.00 feet along the north line of said Block 49 to its Northeast corner having Coordinates of X = 2,650,100.00 and Y = 292,830.00; thence South 890.00 feet along the east line of said Block 49 to the Northeast corner of State Lease No. 17239 having Coordinates of X = 2,650,100.00 and Y = 291,940.00; thence along the boundary of said State Lease No. 17239 the following: West 2,429.00 feet to a point having Coordinates of X = 2,647,671.00 and Y = 291,940.00, South 2,757.00 feet to a point having X = 2,647,671.00 and Y = 289,183.00 and East 2,429.00 feet to its Southeast corner and a point on the east line of said Block 49 having Coordinates of X = 2,650,100.00 and Y = 289,183.00; thence South 3,728.00 feet along the east line of said Block 49 to a point having Coordinates of X = 2,650,100.00 and Y = 285,455.00; thence West 14,750.00 feet to a point on the west line of said Block 49 having Coordinates of X = 2,635,350.00 and Y = 285,455.00; thence North 7,375.00 feet along the west line of said Block 49 to the Point of Beginning, **LESS AND EXCEPT** in its entirety State Lease No. 18623 as follows: Beginning at a point within Block 49, Breton Sound Area, having Coordinates of X = 2,644,884.00 and Y = 286,611.00; thence West 1,258.00 feet to a point having Coordinates of X = 2,643,626.00 and Y = 286,611.00; thence North 1,573.00 feet to a point having Coordinates of X = 2,643,626.00 and Y = 288,184.00; thence North 53 degrees 19 minutes 35 seconds East 1,225.61 feet to a point having Coordinates of X = 2,644,609.00 and Y = 288,916.00; thence East 1,381.00 feet to a point having Coordinates of X = 2,645,990.00 and Y = 288,916.00;

thence South 1,073.00 feet to a point having Coordinates of X = 2,645,990.00 and Y = 287,843.00; thence West 1,106.00 feet to a point having Coordinates of X = 2,644,884.00 and Y = 287,843.00; thence South 1,232.00 feet to the Point of Beginning; containing approximately **1,818.30 acres**, all as more particularly outlined on a plat on file in the Office of Mineral Resources, Department of Natural Resources. All bearings, distances and coordinates are based on Louisiana Coordinate System of 1927, (North or South Zone), where applicable.

NOTE: The above description of the Tract nominated for lease has been provided and corrected, where required, exclusively by the nomination party. Any mineral lease selected from this Tract and awarded by the Louisiana State Mineral Board shall be without warranty of any kind, either express, implied, or statutory, including, but not limited to, the implied warranties of merchantability and fitness for a particular purpose. Should the mineral lease awarded by the Louisiana State Mineral Board be subsequently modified, cancelled or abrogated due to the existence of conflicting leases, operating agreements, private claims or other future obligations or conditions which may affect all or any portion of the leased Tract, it shall not relieve the Lessee of the obligation to pay any bonus due thereon to the Louisiana State Mineral Board, nor shall the Louisiana State Mineral Board be obligated to refund any consideration paid by the Lessor prior to such modification, cancellation, or abrogation, including, but not limited to, bonuses, rentals and royalties.

NOTE: The State of Louisiana does hereby reserve, and this lease shall be subject to, the imprescriptible right of surface use in the nature of a servitude in favor of the Department of Natural Resources, including its Offices and Commissions, for the sole purpose of implementing, constructing, servicing and maintaining approved coastal zone management and/or restoration projects. Utilization of any and all rights derived under this lease by the mineral lessee, its agents, successors or assigns, shall not interfere with nor hinder the reasonable surface use by the Department of Natural Resources, its Offices or Commissions, as herein above reserved.

Applicant: CYPRESS ENERGY CORPORATION

Bidder	Cash Payment	Price/ Acre	Rental	Oil	Gas	Other

Legend

- 06050065
- Blocks
- Active_Leases
- Counties

