

**TRACT 38296 - East Baton Rouge and West Baton Rouge Parishes, Louisiana**

All of the lands now or formerly constituting the beds and bottoms of all water bodies of every nature and description the title of which vests in the State of Louisiana, together with all islands arising therein and other lands formed by accretion or by reliction, where allowed by law, excepting tax adjudicated lands, and not presently under mineral lease and cross hatched on May 10, 2006, situated in East Baton Rouge and West Baton Rouge Parishes, Louisiana, and more particularly described as follows: Beginning at a point having Coordinates of X = 2,029,778.26 and Y = 678,658.52; thence South 87 degrees 45 minutes 57 seconds East 5,279.02 feet to a point having Coordinates of X = 2,035,053.27 and Y = 678,452.73; thence South 02 degrees 14 minutes 03 seconds West 10,561.95 feet to a point having Coordinates of X = 2,034,641.53 and Y = 667,898.81; thence North 87 degrees 45 minutes 57 seconds West 5,279.02 feet to a point having Coordinates of X = 2,029,366.52 and Y = 668,104.60; thence North 02 degrees 14 minutes 03 seconds East 10,561.95 feet to the point of beginning, containing approximately **353 acres**, all as more particularly outlined on a plat on file in the Office of Mineral Resources, Department of Natural Resources. All bearings, distances and coordinates are based on Louisiana Coordinate System of 1927, (North or South Zone), where applicable.

NOTE: The above description of the Tract nominated for lease has been provided and corrected, where required, exclusively by the nomination party. Any mineral lease selected from this Tract and awarded by the Louisiana State Mineral Board shall be without warranty of any kind, either express, implied, or statutory, including, but not limited to, the implied warranties of merchantability and fitness for a particular purpose. Should the mineral lease awarded by the Louisiana State Mineral Board be subsequently modified, cancelled or abrogated due to the existence of conflicting leases, operating agreements, private claims or other future obligations or conditions which may affect all or any portion of the leased Tract, it shall not relieve the Lessee of the obligation to pay any bonus due thereon to the Louisiana State Mineral Board, nor shall the Louisiana State Mineral Board be obligated to refund any consideration paid by the Lessor prior to such modification, cancellation, or abrogation, including, but not limited to, bonuses, rentals and royalties.

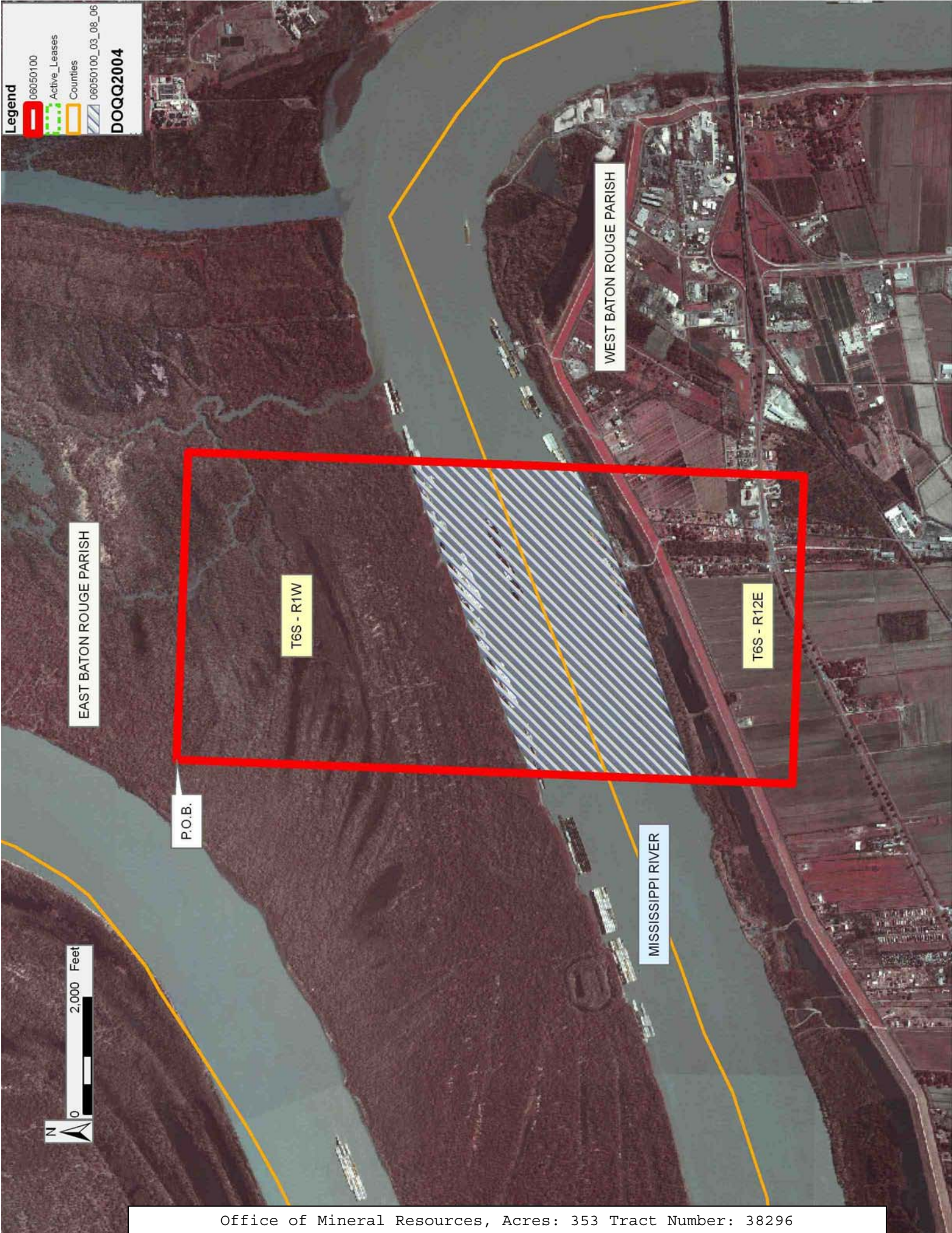
Applicant: THEOPHILUS OIL GAS & LAND SERVICES LLC

Bidder	Cash Payment	Price/Acre	Rental	Oil	Gas	Other

**Legend**

- 06050100
- Active\_Leases
- Counties
- 06050100\_03\_06\_06

**DOQQ2004**





**TRACT 38297 - East Baton Rouge and West Baton Rouge Parishes, Louisiana**





All of the lands now or formerly constituting the beds and bottoms of all water bodies of every nature and description the title of which vests in the State of Louisiana, together with all islands arising therein and other lands formed by accretion or by reliction, where allowed by law, excepting tax adjudicated lands, and not presently under mineral lease and cross hatched on May 10, 2006, situated in East Baton Rouge and West Baton Rouge Parishes, Louisiana, and more particularly described as follows: Beginning at a point having Coordinates of X = 2,012,222.73 and Y = 668,773.44; thence South 87 degrees 45 minutes 57 seconds East 6,598.78 feet to a point having Coordinates of X = 2,018,816.49 and Y = 668,516.19; thence South 02 degrees 14 minutes 03 seconds West 5,279.02 feet to a point having Coordinates of X = 2,018,610.70 and Y = 663,241.18; thence North 87 degrees 45 minutes 57 seconds West 6,598.78 feet to a point having Coordinates of X = 2,012,016.93 and Y = 663,498.43; thence North 02 degrees 14 minutes 03 seconds East 5,279.02 feet to the point of beginning, containing approximately **122 acres**, all as more particularly outlined on a plat on file in the Office of Mineral Resources, Department of Natural Resources. All bearings, distances and coordinates are based on Louisiana Coordinate System of 1927, (North or South Zone), where applicable.

NOTE: The above description of the Tract nominated for lease has been provided and corrected, where required, exclusively by the nomination party. Any mineral lease selected from this Tract and awarded by the Louisiana State Mineral Board shall be without warranty of any kind, either express, implied, or statutory, including, but not limited to, the implied warranties of merchantability and fitness for a particular purpose. Should the mineral lease awarded by the Louisiana State Mineral Board be subsequently modified, cancelled or abrogated due to the existence of conflicting leases, operating agreements, private claims or other future obligations or conditions which may affect all or any portion of the leased Tract, it shall not relieve the Lessee of the obligation to pay any bonus due thereon to the Louisiana State Mineral Board, nor shall the Louisiana State Mineral Board be obligated to refund any consideration paid by the Lessor prior to such modification, cancellation, or abrogation, including, but not limited to, bonuses, rentals and royalties.

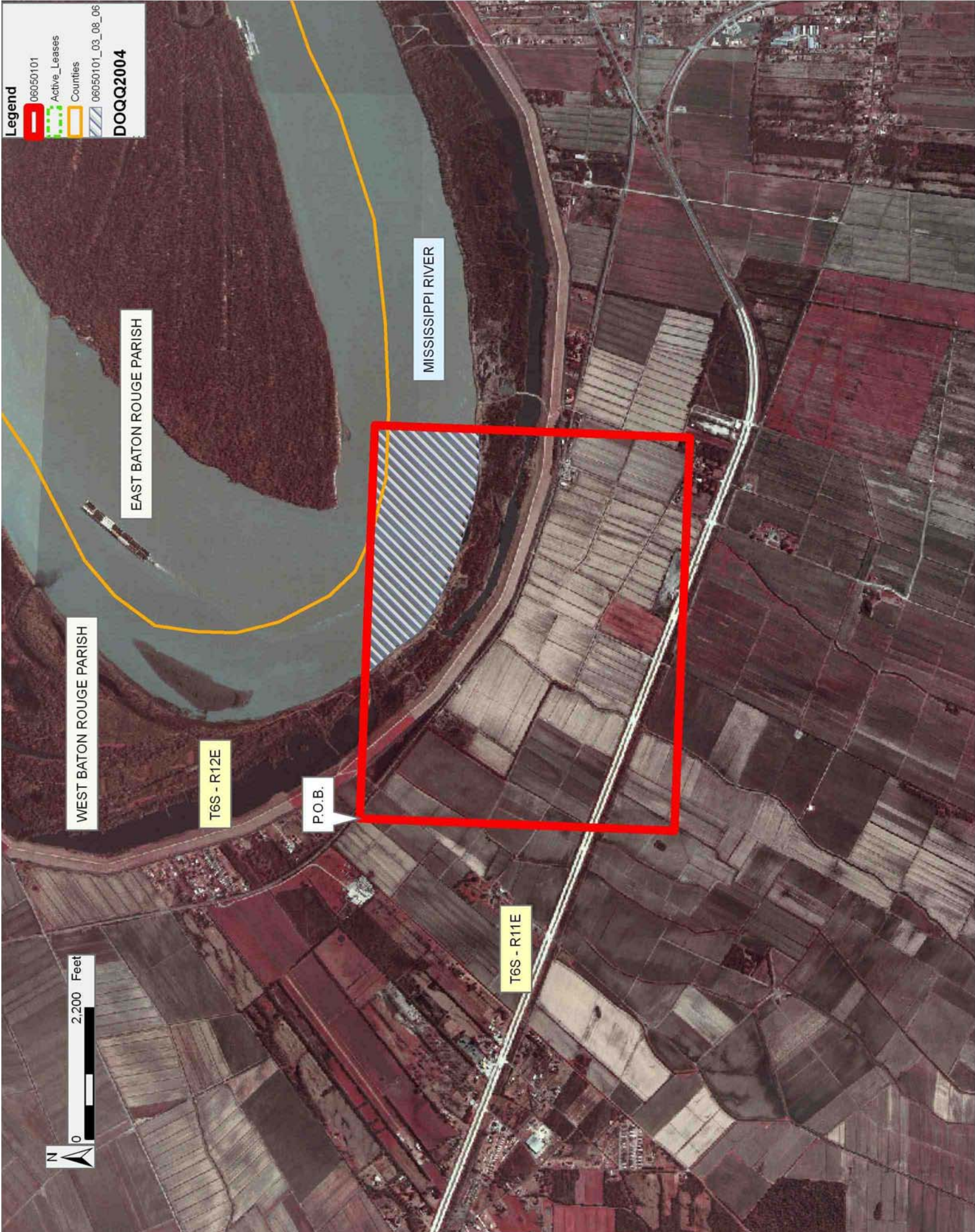
Bidder	Cash Payment	Price/Acre	Rental	Oil	Gas	Other

Applicant: THEOPHILUS OIL GAS & LAND SERVICES LLC

**Legend**

-  06050101
-  Active\_Leases
-  Counties
-  06050101\_03\_06\_06

**DOQQ2004**





**TRACT 38298 - East Baton Rouge and West Baton Rouge Parishes, Louisiana**

All of the lands now or formerly constituting the beds and bottoms of all water bodies of every nature and description the title of which vests in the State of Louisiana, together with all islands arising therein and other lands formed by accretion or by reliction, where allowed by law, excepting tax adjudicated lands, and not presently under mineral lease and cross hatched on May 10, 2006, situated in East Baton Rouge and West Baton Rouge Parishes, Louisiana, and more particularly described as follows: Beginning at a point having Coordinates of X = 2,018,816.49 and Y = 668,516.19; thence South 87 degrees 45 minutes 57 seconds East 10,558.05 feet to a point having Coordinates of X = 2,029,366.52 and Y = 668,104.60; thence South 02 degrees 14 minutes 03 seconds West 5,279.02 feet to a point having Coordinates of X = 2,029,160.72 and Y = 662,829.59; thence North 87 degrees 45 minutes 57 seconds West 10,558.05 feet to a point having Coordinates of X = 2,018,610.70 and Y = 663,241.18; thence North 02 degrees 14 minutes 03 seconds East 5,279.02 feet to the point of beginning, containing approximately **165 acres**, all as more particularly outlined on a plat on file in the Office of Mineral Resources, Department of Natural Resources. All bearings, distances and coordinates are based on Louisiana Coordinate System of 1927, (North or South Zone), where applicable.

NOTE: The above description of the Tract nominated for lease has been provided and corrected, where required, exclusively by the nomination party. Any mineral lease selected from this Tract and awarded by the Louisiana State Mineral Board shall be without warranty of any kind, either express, implied, or statutory, including, but not limited to, the implied warranties of merchantability and fitness for a particular purpose. Should the mineral lease awarded by the Louisiana State Mineral Board be subsequently modified, cancelled or abrogated due to the existence of conflicting leases, operating agreements, private claims or other future obligations or conditions which may affect all or any portion of the leased Tract, it shall not relieve the Lessee of the obligation to pay any bonus due thereon to the Louisiana State Mineral Board, nor shall the Louisiana State Mineral Board be obligated to refund any consideration paid by the Lessor prior to such modification, cancellation, or abrogation, including, but not limited to, bonuses, rentals and royalties.

Bidder	Cash Payment	Price/Acre	Rental	Oil	Gas	Other

Applicant: THEOPHILUS OIL GAS & LAND SERVICES LLC

**Legend**

- 06050102
- Active\_Leases
- Countries
- 0605010\_03\_20\_06
- DOQQ2004





**TRACT 38299 - Iberville Parish, Louisiana**

All of the lands now or formerly constituting the beds and bottoms of all water bodies of every nature and description the title of which vests in the State of Louisiana, together with all islands arising therein and other lands formed by accretion or by reliction, where allowed by law, excepting tax adjudicated lands, and not presently under mineral lease and cross hatched on May 10, 2006, situated in Iberville Parish, Louisiana, and more particularly described as follows: Beginning at a point having Coordinates of X = 1,911,300.00 and Y = 631,000.00; thence East 11,000.00 feet to a point having Coordinates of X = 1,922,300.00 and Y = 631,000.00; thence South 7,400.00 feet to a point having Coordinates of X = 1,922,300.00 and Y = 623,600.00; thence West 11,000.00 feet to a point having Coordinates of X = 1,911,300.00 and Y = 623,600.00; thence North 7,400.00 feet to the point of beginning, **LESS AND EXCEPT** that portion, if any, that may lie within the boundaries of the Sherburne Wildlife Management Area, containing approximately **19 acres**, all as more particularly outlined on a plat on file in the Office of Mineral Resources, Department of Natural Resources. All bearings, distances and coordinates are based on Louisiana Coordinate System of 1927, (North or South Zone), where applicable.

NOTE: The above description of the Tract nominated for lease has been provided and corrected, where required, exclusively by the nomination party. Any mineral lease selected from this Tract and awarded by the Louisiana State Mineral Board shall be without warranty of any kind, either express, implied, or statutory, including, but not limited to, the implied warranties of merchantability and fitness for a particular purpose. Should the mineral lease awarded by the Louisiana State Mineral Board be subsequently modified, cancelled or abrogated due to the existence of conflicting leases, operating agreements, private claims or other future obligations or conditions which may affect all or any portion of the leased Tract, it shall not relieve the Lessee of the obligation to pay any bonus due thereon to the Louisiana State Mineral Board, nor shall the Louisiana State Mineral Board be obligated to refund any consideration paid by the Lessor prior to such modification, cancellation, or abrogation, including, but not limited to, bonuses, rentals and royalties.

NOTE: This tract is located within the boundaries of a wildlife management area or refuge and any operations conducted thereon in conjunction with this mineral lease may be subject to rules and regulations promulgated by the Department of Wildlife and Fisheries for the protection of fish, birds and other wildlife including, but not necessarily limited to, the following:

1. No activities will be allowed without written authorization from the Louisiana Department of Wildlife and Fisheries. All projects will be coordinated and approved by the appropriate WMA Supervisor prior to any activities on the wildlife management area.
2. Proposed projects will be evaluated on a case by case basis. Modifications to proposed projects may be required including, but not

limited to, access routes, spoil placement, well sites, flow lines and other appurtenant structures required by the Louisiana Department of Wildlife and Fisheries.

3. Compensatory mitigation will be required to offset unavoidable wetland impacts.

4. Removal of all structures, facilities, and equipment will be required within 120 days of abandonment unless otherwise agreed to by the Department of Wildlife and Fisheries.

5. No activities will be allowed during the hunting season unless approved by the Department.

6. Compliance with the said WMA regulations will be required unless otherwise specified by the Department.

7. Prior to submitting applications for wetland permits to Federal and State permitting agencies the lease holder shall coordinate project details with the Louisiana Department of Wildlife and Fisheries, Fur and Refuge Division. Contact person for the Department will be Mike Windham at (504) 568-5886.

Applicant: A. S. RUFFIN, JR.

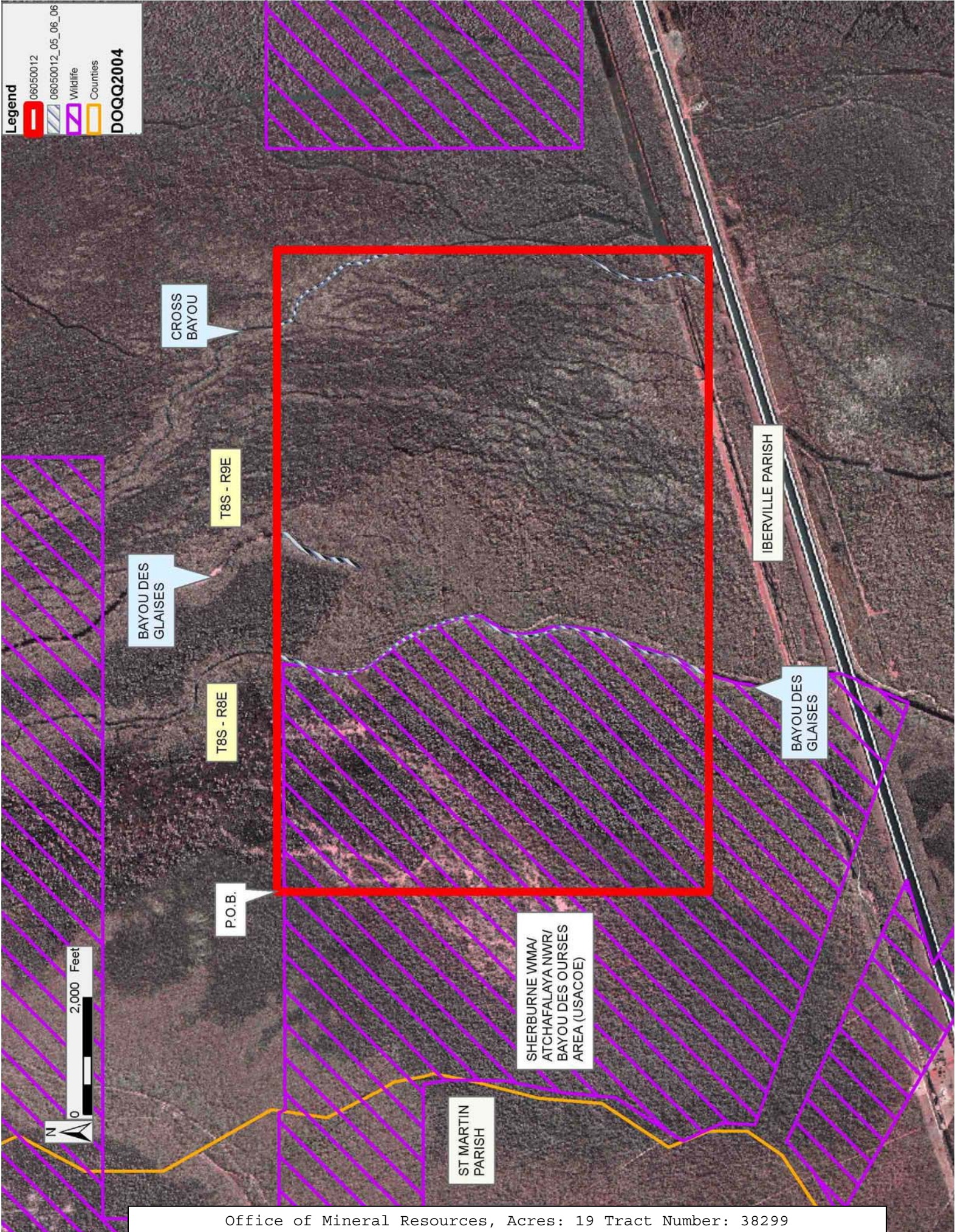
Bidder	Cash Payment	Price/Acre	Rental	Oil	Gas	Other



**Legend**

-  06050012
-  06050012\_05\_06\_06
-  Wildlife
-  Counties

**DOQQ2004**





**TRACT 38300 - Iberville and St. Martin Parishes, Louisiana**

All of the lands now or formerly constituting the beds and bottoms of all water bodies of every nature and description the title of which vests in the State of Louisiana, together with all islands arising therein and other lands formed by accretion or by reliction, where allowed by law, excepting tax adjudicated lands, and not presently under mineral lease and cross hatched on May 10, 2006, situated in Iberville and St. Martin Parishes, Louisiana, and more particularly described as follows: Beginning at a point having Coordinates of X = 1,916,800.00 and Y = 607,700.00; thence West 11,000.00 feet to a point having Coordinates of X = 1,905,800.00 and Y = 607,700.00; thence North 15,900.00 feet to a point having Coordinates of X = 1,905,800.00 and Y = 623,600.00; thence East 11,000.00 feet to a point having Coordinates of X = 1,916,800.00 and Y = 623,600.00; thence South 15,900.00 feet to the point of beginning, **LESS AND EXCEPT** that portion, if any, that may lie within the boundaries of the Sherburne Wildlife Management Area, containing approximately **48 acres**, all as more particularly outlined on a plat on file in the Office of Mineral Resources, Department of Natural Resources. All bearings, distances and coordinates are based on Louisiana Coordinate System of 1927, (North or South Zone), where applicable.

NOTE: The above description of the Tract nominated for lease has been provided and corrected, where required, exclusively by the nomination party. Any mineral lease selected from this Tract and awarded by the Louisiana State Mineral Board shall be without warranty of any kind, either express, implied, or statutory, including, but not limited to, the implied warranties of merchantability and fitness for a particular purpose. Should the mineral lease awarded by the Louisiana State Mineral Board be subsequently modified, cancelled or abrogated due to the existence of conflicting leases, operating agreements, private claims or other future obligations or conditions which may affect all or any portion of the leased Tract, it shall not relieve the Lessee of the obligation to pay any bonus due thereon to the Louisiana State Mineral Board, nor shall the Louisiana State Mineral Board be obligated to refund any consideration paid by the Lessor prior to such modification, cancellation, or abrogation, including, but not limited to, bonuses, rentals and royalties.

NOTE: This tract is located within the boundaries of a wildlife management area or refuge and any operations conducted thereon in conjunction with this mineral lease may be subject to rules and regulations promulgated by the Department of Wildlife and Fisheries for the protection of fish, birds and other wildlife including, but not necessarily limited to, the following:

1. No activities will be allowed without written authorization from the Louisiana Department of Wildlife and Fisheries. All projects will be coordinated and approved by the appropriate WMA Supervisor prior to any activities on the wildlife management area.
2. Proposed projects will be evaluated on a case by case basis. Modifications to proposed projects may be required including, but not



limited to, access routes, spoil placement, well sites, flow lines and other appurtenant structures required by the Louisiana Department of Wildlife and Fisheries.

3. Compensatory mitigation will be required to offset unavoidable wetland impacts.

4. Removal of all structures, facilities, and equipment will be required within 120 days of abandonment unless otherwise agreed to by the Department of Wildlife and Fisheries.

5. No activities will be allowed during the hunting season unless approved by the Department.

6. Compliance with the said WMA regulations will be required unless otherwise specified by the Department.

7. Prior to submitting applications for wetland permits to Federal and State permitting agencies the lease holder shall coordinate project details with the Louisiana Department of Wildlife and Fisheries, Fur and Refuge Division. Contact person for the Department will be Mike Windham at (504) 568-5886.

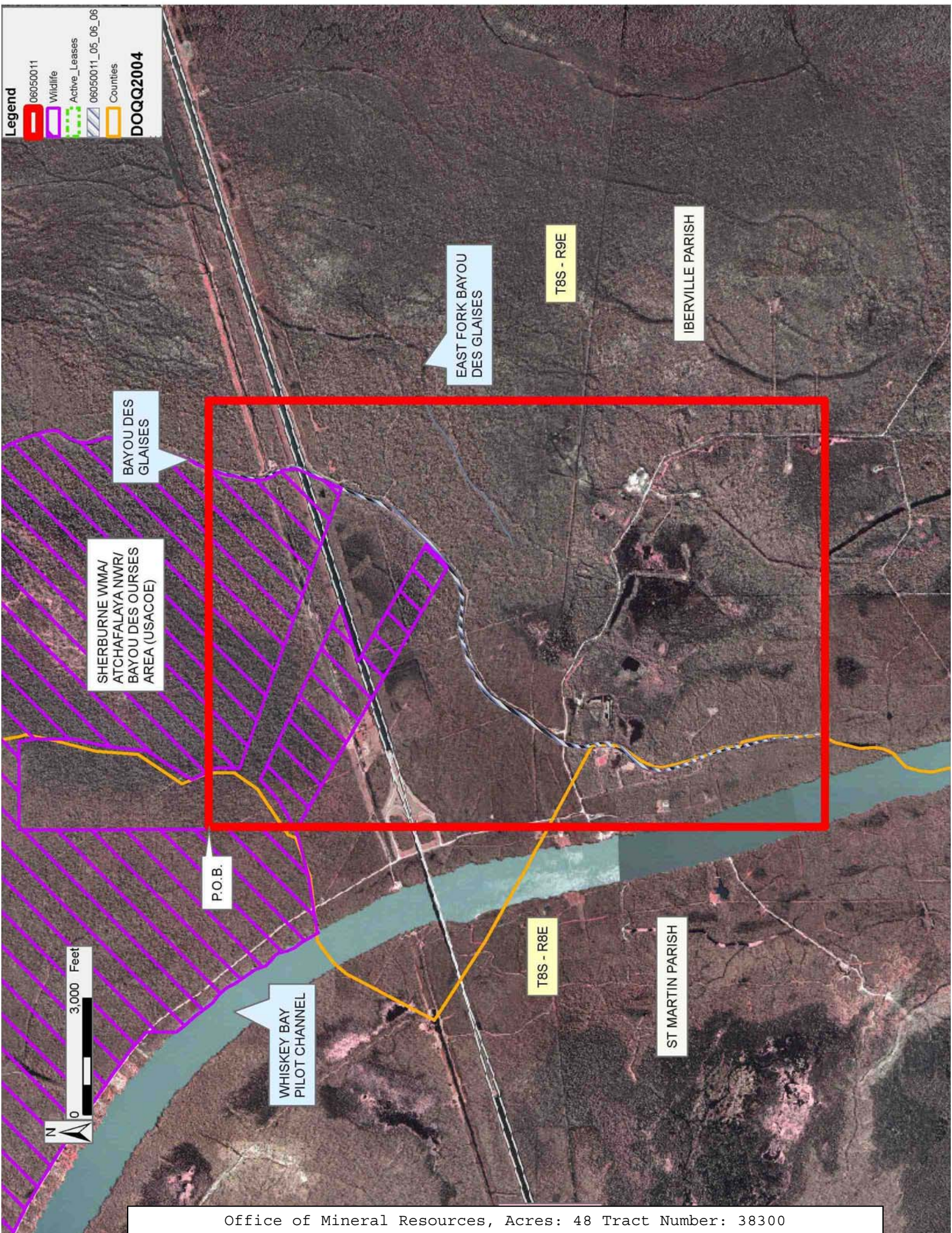
Applicant: A. S. RUFFIN, JR.

Bidder	Cash Payment	Price/Acre	Rental	Oil	Gas	Other



**Legend**

- 06050011
- Wildlife
- Active\_Leases
- 06050011\_05\_06\_06
- Counties
- DOQQ2004





**TRACT 38301 - Iberville and St. Martin Parishes, Louisiana**

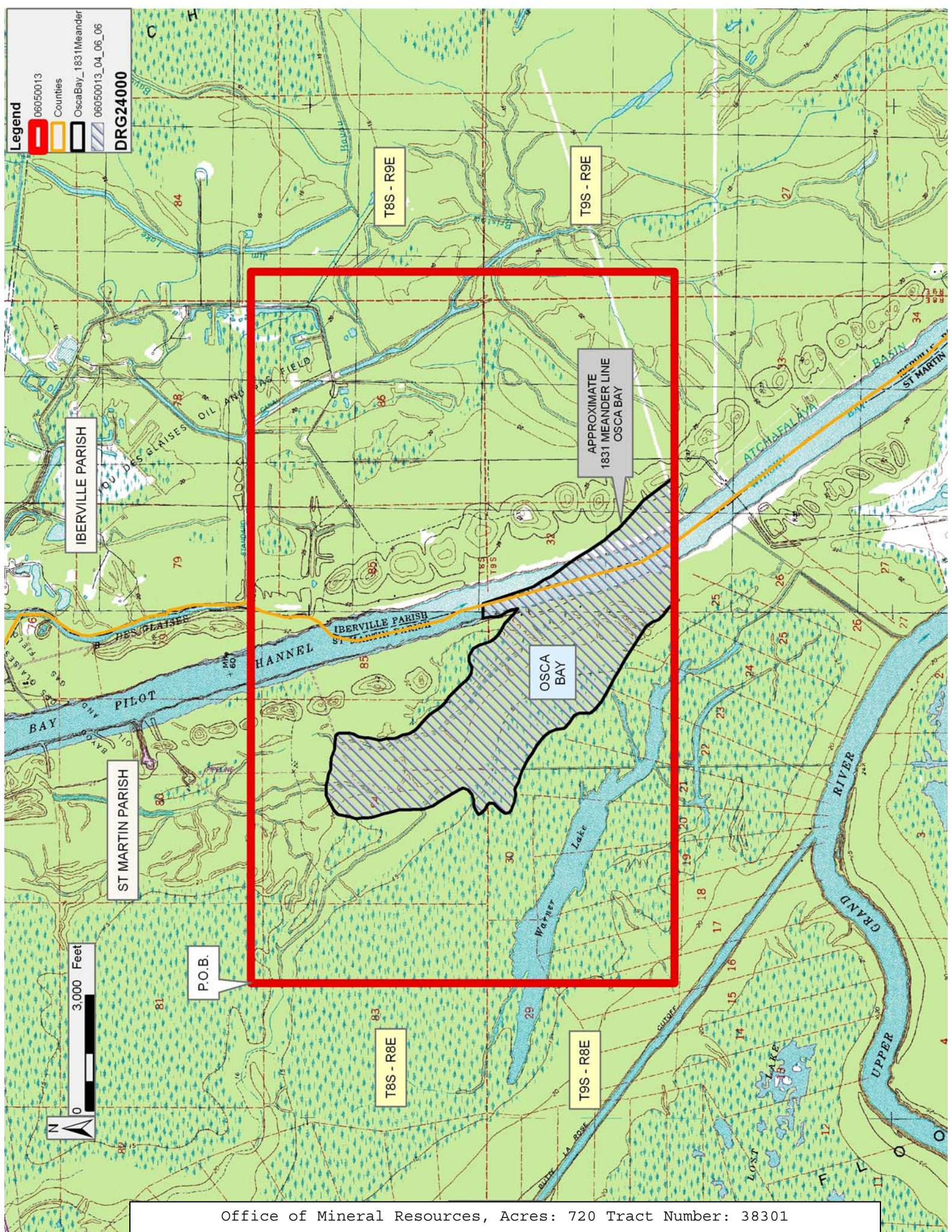
All of the lands now or formerly constituting the beds and bottoms of all water bodies of every nature and description the title of which vests in the State of Louisiana, together with all islands arising therein and other lands formed by accretion or by reliction, where allowed by law, excepting tax adjudicated lands, and not presently under mineral lease and cross hatched on May 10, 2006, situated in Iberville and St. Martin Parishes, Louisiana, and more particularly described as follows: Beginning at a point having Coordinates of X = 1,916,800.00 and Y = 607,700.00; thence South 11,000.00 feet to a point having Coordinates of X = 1,916,800.00 and Y = 596,700.00; thence West 18,480.00 feet to a point having Coordinates of X = 1,898,320.00 and Y = 596,700.00; thence North 11,000.00 feet to a point having Coordinates of X = 1,898,320.00 and Y = 607,700.00; thence East 18,480.00 feet to the point of beginning, containing approximately **720 acres**, all as more particularly outlined on a plat on file in the Office of Mineral Resources, Department of Natural Resources. All bearings, distances and coordinates are based on Louisiana Coordinate System of 1927, (North or South Zone), where applicable.

NOTE: The above description of the Tract nominated for lease has been provided and corrected, where required, exclusively by the nomination party. Any mineral lease selected from this Tract and awarded by the Louisiana State Mineral Board shall be without warranty of any kind, either express, implied, or statutory, including, but not limited to, the implied warranties of merchantability and fitness for a particular purpose. Should the mineral lease awarded by the Louisiana State Mineral Board be subsequently modified, cancelled or abrogated due to the existence of conflicting leases, operating agreements, private claims or other future obligations or conditions which may affect all or any portion of the leased Tract, it shall not relieve the Lessee of the obligation to pay any bonus due thereon to the Louisiana State Mineral Board, nor shall the Louisiana State Mineral Board be obligated to refund any consideration paid by the Lessor prior to such modification, cancellation, or abrogation, including, but not limited to, bonuses, rentals and royalties.

Applicant: A. S. RUFFIN, JR.

Bidder	Cash Payment	Price/Acre	Rental	Oil	Gas	Other





**Legend**  
06050013  
Counties  
OscaBay\_1831Meander  
06050013\_04\_06\_06  
**DRG24000**

IBERVILLE PARISH

ST MARTIN PARISH

P.O.B.

T8S - R9E

T9S - R9E

APPROXIMATE  
1831 MEANDER LINE  
OSCA BAY

OSCA  
BAY

T8S - R8E

T9S - R8E



**TRACT 38302 - Lafayette and Vermilion Parishes, Louisiana**

All of the lands now or formerly constituting the beds and bottoms of all water bodies of every nature and description the title of which vests in the State of Louisiana, together with all islands arising therein and other lands formed by accretion or by reliction, where allowed by law, excepting tax adjudicated lands, and not presently under mineral lease and cross hatched on May 10, 2006, situated in Lafayette and Vermilion Parishes, Louisiana, and more particularly described as follows: Beginning at a point having Coordinates of X = 1,762,304.00 and Y = 521,509.00; thence East 5,815.00 feet to a point having Coordinates of X = 1,768,119.00 and Y = 521,509.00; thence South 18,480.00 feet to the Northeast corner of State Lease No. 18374 having Coordinates of X = 1,768,119.00 and Y = 503,029.00; thence North 88 degrees 29 minutes 34 seconds West 5,817.01 feet along the North line of said State Lease No. 18374 to its Northwest corner having Coordinates of X = 1,762,304.00 and Y = 503,182.00; thence North 18,327.00 feet to the point of beginning, containing approximately **66 acres**, all as more particularly outlined on a plat on file in the Office of Mineral Resources, Department of Natural Resources. All bearings, distances and coordinates are based on Louisiana Coordinate System of 1927, (North or South Zone), where applicable.

NOTE: The above description of the Tract nominated for lease has been provided and corrected, where required, exclusively by the nomination party. Any mineral lease selected from this Tract and awarded by the Louisiana State Mineral Board shall be without warranty of any kind, either express, implied, or statutory, including, but not limited to, the implied warranties of merchantability and fitness for a particular purpose. Should the mineral lease awarded by the Louisiana State Mineral Board be subsequently modified, cancelled or abrogated due to the existence of conflicting leases, operating agreements, private claims or other future obligations or conditions which may affect all or any portion of the leased Tract, it shall not relieve the Lessee of the obligation to pay any bonus due thereon to the Louisiana State Mineral Board, nor shall the Louisiana State Mineral Board be obligated to refund any consideration paid by the Lessor prior to such modification, cancellation, or abrogation, including, but not limited to, bonuses, rentals and royalties.

NOTE: The State of Louisiana does hereby reserve, and this lease shall be subject to, the imprescriptible right of surface use in the nature of a servitude in favor of the Department of Natural Resources, including its Offices and Commissions, for the sole purpose of implementing, constructing, servicing and maintaining approved coastal zone management and/or restoration projects. Utilization of any and all rights derived under this lease by the mineral lessee, its agents, successors or assigns, shall not interfere with nor hinder the reasonable surface use by the Department of Natural Resources, its Offices or Commissions, as herein above reserved.



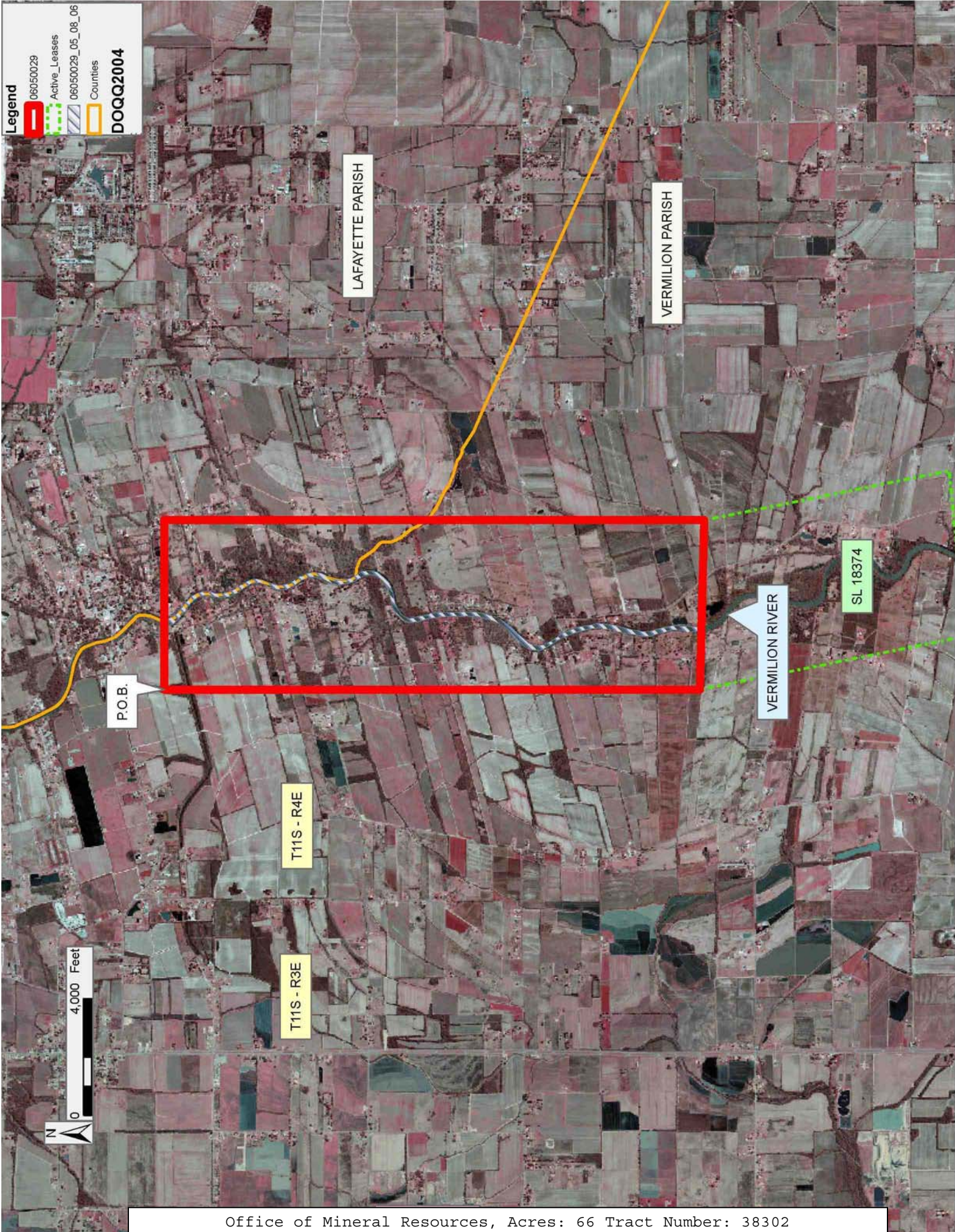
Applicant: SUNCOAST LAND SERVICES, INC.

Bidder	Cash Payment	Price/Acre	Rental	Oil	Gas	Other



**Legend**

- 06050029
- Active\_Leases
- 06050029\_05\_06\_06
- Counties
- DOQQ2004





**TRACT 38303 - Vermilion Parish, Louisiana**

All of the lands now or formerly constituting the beds and bottoms of all water bodies of every nature and description the title of which vests in the State of Louisiana, together with all islands arising therein and other lands formed by accretion or by reliction, where allowed by law, excepting tax adjudicated lands, and not presently under mineral lease and cross hatched on May 10, 2006, situated in Vermilion Parish, Louisiana, and more particularly described as follows: Beginning at a point having Coordinates of X = 1,736,000.00 and Y = 433,900.00; thence East 11,700.00 feet to a point having Coordinates of X = 1,747,700.00 and Y = 433,900.00; thence South 7,500.00 feet to a point having Coordinates of X = 1,747,700.00 and Y = 426,400.00; thence West 11,700.00 feet to a point having Coordinates of X = 1,736,000.00 and Y = 426,400.00; thence North 7,500.00 feet to the point of beginning, containing approximately **56 acres**, all as more particularly outlined on a plat on file in the Office of Mineral Resources, Department of Natural Resources. All bearings, distances and coordinates are based on Louisiana Coordinate System of 1927, (North or South Zone), where applicable.

NOTE: The above description of the Tract nominated for lease has been provided and corrected, where required, exclusively by the nomination party. Any mineral lease selected from this Tract and awarded by the Louisiana State Mineral Board shall be without warranty of any kind, either express, implied, or statutory, including, but not limited to, the implied warranties of merchantability and fitness for a particular purpose. Should the mineral lease awarded by the Louisiana State Mineral Board be subsequently modified, cancelled or abrogated due to the existence of conflicting leases, operating agreements, private claims or other future obligations or conditions which may affect all or any portion of the leased Tract, it shall not relieve the Lessee of the obligation to pay any bonus due thereon to the Louisiana State Mineral Board, nor shall the Louisiana State Mineral Board be obligated to refund any consideration paid by the Lessor prior to such modification, cancellation, or abrogation, including, but not limited to, bonuses, rentals and royalties.





NOTE: The State of Louisiana does hereby reserve, and this lease shall be subject to, the imprescriptible right of surface use in the nature of a servitude in favor of the Department of Natural Resources, including its Offices and Commissions, for the sole purpose of implementing, constructing, servicing and maintaining approved coastal zone management and/or restoration projects. Utilization of any and all rights derived under this lease by the mineral lessee, its agents, successors or assigns, shall not interfere with nor hinder the reasonable surface use by the Department of Natural Resources, its Offices or Commissions, as herein above reserved.

Applicant: AMEX RESOURCES, INC.

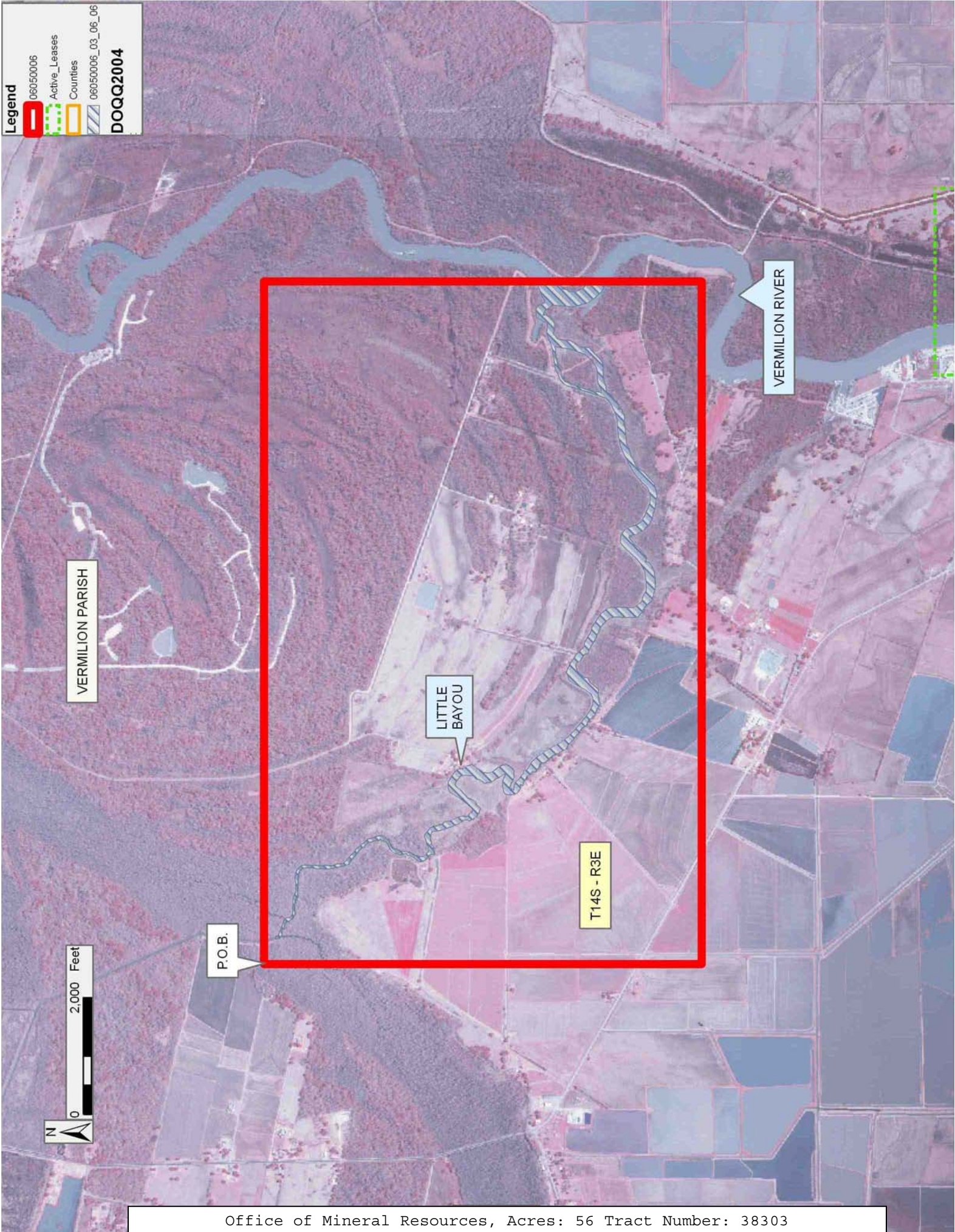
Bidder	Cash Payment	Price/Acre	Rental	Oil	Gas	Other



**Legend**

-  06050006
-  Active\_Leases
-  Counties
-  06050006\_03\_06\_06

**DOQQ2004**



**TRACT 38304 - Portion of Block 68, Chandeleur Sound Area, St. Bernard Parish, Louisiana**

All of the lands now or formerly constituting the beds and bottoms of all water bodies of every nature and description the title of which vests in the State of Louisiana, together with all islands arising therein and other lands formed by accretion or by reliction, where allowed by law, excepting tax adjudicated lands, and not presently under mineral lease and cross hatched on May 10, 2006, situated in St. Bernard Parish, Louisiana, and more particularly described as follows: Beginning at the Northwest Corner of Block 68, Chandeleur Sound Area, having Coordinates of X = 2,650,100.00 and Y = 396,080.00; thence East 13,505.00 feet along the North line of said Block 68 to the Northwest Corner of State Lease No. 18793, having Coordinates of X = 2,663,605.00 and Y = 396,080.00; thence South 33 degrees 10 minutes 43 seconds West 5,436.28 feet along the Western boundary of said State Lease No. 18793 to a point having Coordinates of X = 2,660,630.00 and Y = 391,530.00, said point being also on the Northern boundary of State Lease No. 17122; thence along the boundary of said State Lease No. 17122 the following courses: West 355.00 feet to a point having Coordinates of X = 2,660,275.00 and Y = 391,530.00; South 2,825.00 feet to a point having Coordinates of X = 2,660,275.00 and Y = 388,705.00; thence West 10,175.00 feet to a point on the West line of said Block 68, having Coordinates of X = 2,650,100.00 and Y = 388,705.00; thence North 7,375.00 feet along said West line of Block 68 to the point of beginning, containing approximately **1,915.15 acres**, all as more particularly outlined on a plat on file in the Office of Mineral Resources, Department of Natural Resources. All bearings, distances and coordinates are based on Louisiana Coordinate System of 1927, (North or South Zone), where applicable.

NOTE: The above description of the Tract nominated for lease has been provided and corrected, where required, exclusively by the nomination party. Any mineral lease selected from this Tract and awarded by the Louisiana State Mineral Board shall be without warranty of any kind, either express, implied, or statutory, including, but not limited to, the implied warranties of merchantability and fitness for a particular purpose. Should the mineral lease awarded by the Louisiana State Mineral Board be subsequently modified, cancelled or abrogated due to the existence of conflicting leases, operating agreements, private claims or other future obligations or conditions which may affect all or any portion of the leased Tract, it shall not relieve the Lessee of the obligation to pay any bonus due thereon to the Louisiana State Mineral Board, nor shall the Louisiana State Mineral Board be obligated to refund any consideration paid by the Lessor prior to such modification, cancellation, or abrogation, including, but not limited to, bonuses, rentals and royalties.

NOTE: The Office of Mineral Resources will require a minimum bonus of \$190 per acre and a minimum royalty of 22%.



NOTE: The State of Louisiana does hereby reserve, and this lease shall be subject to, the imprescriptible right of surface use in the nature of a servitude in favor of the Department of Natural Resources, including its Offices and Commissions, for the sole purpose of implementing, constructing, servicing and maintaining approved coastal zone management and/or restoration projects. Utilization of any and all rights derived under this lease by the mineral lessee, its agents, successors or assigns, shall not interfere with nor hinder the reasonable surface use by the Department of Natural Resources, its Offices or Commissions, as herein above reserved.

Applicant: MCGINTY-DURHAM, INC.

Bidder	Cash Payment	Price/Acre	Rental	Oil	Gas	Other



ST BERNARD PARISH

P.O.B.

SL 18793

SL 17122

CS0068

CHANDELEUR SOUND AREA

CS0069



**TRACT 38305 - Portion of Block 69, Chandeleur Sound Area, St. Bernard Parish, Louisiana**

All of the lands now or formerly constituting the beds and bottoms of all water bodies of every nature and description the title of which vests in the State of Louisiana, together with all islands arising therein and other lands formed by accretion or by reliction, where allowed by law, excepting tax adjudicated lands, and not presently under mineral lease and cross hatched on May 10, 2006, situated in St. Bernard Parish, Louisiana, and more particularly described as follows: Beginning at the Northwest Corner of Block 69, Chandeleur Sound Area, having Coordinates of X = 2,635,350.00 and Y = 396,080.00; thence East 14,750.00 feet along the North line of said Block 69 to its Northeast Corner, having Coordinates of X = 2,650,100.00 and Y = 396,080.00; thence South 7,375.00 feet along the East line of said Block 69 to a point having Coordinates of X = 2,650,100.00 and Y = 388,705.00; thence West 14,750.00 feet to a point on the West line of said Block 69, having Coordinates of X = 2,635,350.00 and Y = 388,705.00; thence North 7,375.00 along said West line of Block 69 to the point of beginning, containing approximately **2,497.27 acres**, all as more particularly outlined on a plat on file in the Office of Mineral Resources, Department of Natural Resources. All bearings, distances and coordinates are based on Louisiana Coordinate System of 1927, (North or South Zone), where applicable.

NOTE: The above description of the Tract nominated for lease has been provided and corrected, where required, exclusively by the nomination party. Any mineral lease selected from this Tract and awarded by the Louisiana State Mineral Board shall be without warranty of any kind, either express, implied, or statutory, including, but not limited to, the implied warranties of merchantability and fitness for a particular purpose. Should the mineral lease awarded by the Louisiana State Mineral Board be subsequently modified, cancelled or abrogated due to the existence of conflicting leases, operating agreements, private claims or other future obligations or conditions which may affect all or any portion of the leased Tract, it shall not relieve the Lessee of the obligation to pay any bonus due thereon to the Louisiana State Mineral Board, nor shall the Louisiana State Mineral Board be obligated to refund any consideration paid by the Lessor prior to such modification, cancellation, or abrogation, including, but not limited to, bonuses, rentals and royalties.

NOTE: The State of Louisiana does hereby reserve, and this lease shall be subject to, the imprescriptible right of surface use in the nature of a servitude in favor of the Department of Natural Resources, including its Offices and Commissions, for the sole purpose of implementing, constructing, servicing and maintaining approved coastal zone management and/or restoration projects. Utilization of any and all rights derived under this lease by the mineral lessee, its agents, successors or assigns, shall not interfere with nor hinder the reasonable surface use by the Department of Natural Resources, its Offices or Commissions, as herein above reserved.





NOTE: The Department of Wildlife and Fisheries has designated certain areas in the coastal waters of the State of Louisiana as Oyster Seed Bed Areas. The exact location of those Seed Bed Areas must be obtained from the Department of Wildlife and Fisheries and any work done under a mineral lease from the State of Louisiana may necessarily be conducted in conformity with the rules and regulations promulgated by the said Department of Wildlife and Fisheries for Oyster Seed Bed Areas.

Applicant: MCGINTY-DURHAM, INC.

Bidder	Cash Payment	Price/Acre	Rental	Oil	Gas	Other



**Legend**

-  06050032
-  Blocks
-  Active\_Leases
-  Counties

ST BERNARD PARISH

CS0050

CHANDELEUR SOUND AREA

CS0069

SL 16799

SL 16798

P.O.B.

