

TRACT 38286 - East Baton Rouge and West Baton Rouge Parishes, Louisiana

All of the lands now or formerly constituting the beds and bottoms of all water bodies of every nature and description the title of which vests in the State of Louisiana, together with all islands arising therein and other lands formed by accretion or by reliction, where allowed by law, excepting tax adjudicated lands, and not presently under mineral lease and cross hatched on May 10, 2006, situated in East Baton Rouge and West Baton Rouge Parishes, Louisiana, and more particularly described as follows: Beginning at a point having Coordinates of X = 2,003,067.52 and Y = 697,710.68; thence East 5,306.63 feet to a point having Coordinates of X = 2,008,374.15 and Y = 697,710.68; thence South 08 degrees 06 minutes 54 seconds West 5,306.63 feet to a point having Coordinates of X = 2,007,625.07 and Y = 692,457.19; thence West 5,306.64 feet to a point having Coordinates of X = 2,002,318.43 and Y = 692,457.19; thence North 08 degrees 06 minutes 54 seconds East 5,306.63 feet to the point of beginning, containing approximately **338 acres**, all as more particularly outlined on a plat on file in the Office of Mineral Resources, Department of Natural Resources. All bearings, distances and coordinates are based on Louisiana Coordinate System of 1927, (North or South Zone), where applicable.

NOTE: The above description of the Tract nominated for lease has been provided and corrected, where required, exclusively by the nomination party. Any mineral lease selected from this Tract and awarded by the Louisiana State Mineral Board shall be without warranty of any kind, either express, implied, or statutory, including, but not limited to, the implied warranties of merchantability and fitness for a particular purpose. Should the mineral lease awarded by the Louisiana State Mineral Board be subsequently modified, cancelled or abrogated due to the existence of conflicting leases, operating agreements, private claims or other future obligations or conditions which may affect all or any portion of the leased Tract, it shall not relieve the Lessee of the obligation to pay any bonus due thereon to the Louisiana State Mineral Board, nor shall the Louisiana State Mineral Board be obligated to refund any consideration paid by the Lessor prior to such modification, cancellation, or abrogation, including, but not limited to, bonuses, rentals and royalties.

Applicant: THEOPHILUS OIL GAS & LAND SERVICES LLC

Bidder	Cash Payment	Price/Acre	Rental	Oil	Gas	Other

Legend

- 06050091
- Counties
- 06050091_03_09_06
- DOQQ2004**

EAST BATON ROUGE PARISH

MISSISSIPPI RIVER

WEST BATON ROUGE PARISH

P.O.B.

T5S - R11E

T6S - R11E



TRACT 38287 - East Baton Rouge and West Baton Rouge Parishes, Louisiana

All of the lands now or formerly constituting the beds and bottoms of all water bodies of every nature and description the title of which vests in the State of Louisiana, together with all islands arising therein and other lands formed by accretion or by reliction, where allowed by law, excepting tax adjudicated lands, and not presently under mineral lease and cross hatched on May 10, 2006, situated in East Baton Rouge and West Baton Rouge Parishes, Louisiana, and more particularly described as follows: Beginning at the Southeast corner of State Lease No. 14674, having Coordinates of X = 2,022,795.90 and Y = 687,203.68; thence North 08 degrees 06 minutes 54 seconds East 5,306.63 feet along the Easterly boundary of said State Lease No. 14674 to its Northeast corner, also being the Southeast corner of State Lease No. 18804 and the most Easterly Southwest corner of State Lease No. 18824, having Coordinates of X = 2,023,544.99 and Y = 692,457.17; thence East 5,306.63 feet along the Southerly boundary of said State Lease No. 18824 to a point having Coordinates of X = 2,028,851.62 and Y = 692,457.17; thence South 08 degrees 06 minutes 54 seconds West 5,306.63 feet to the Northeast corner of State Lease No. 18805, having Coordinates of X = 2,028,102.53 and Y = 687,203.68; thence West 1,938.27 feet along the North boundary of said State Lease No. 18805 to its Northwest corner, having Coordinates of X = 2,026,164.26 and Y = 687,203.68; thence West 3,368.36 feet to the point of beginning, containing approximately **398 acres**, all as more particularly outlined on a plat on file in the Office of Mineral Resources, Department of Natural Resources. All bearings, distances and coordinates are based on Louisiana Coordinate System of 1927, (North or South Zone), where applicable.

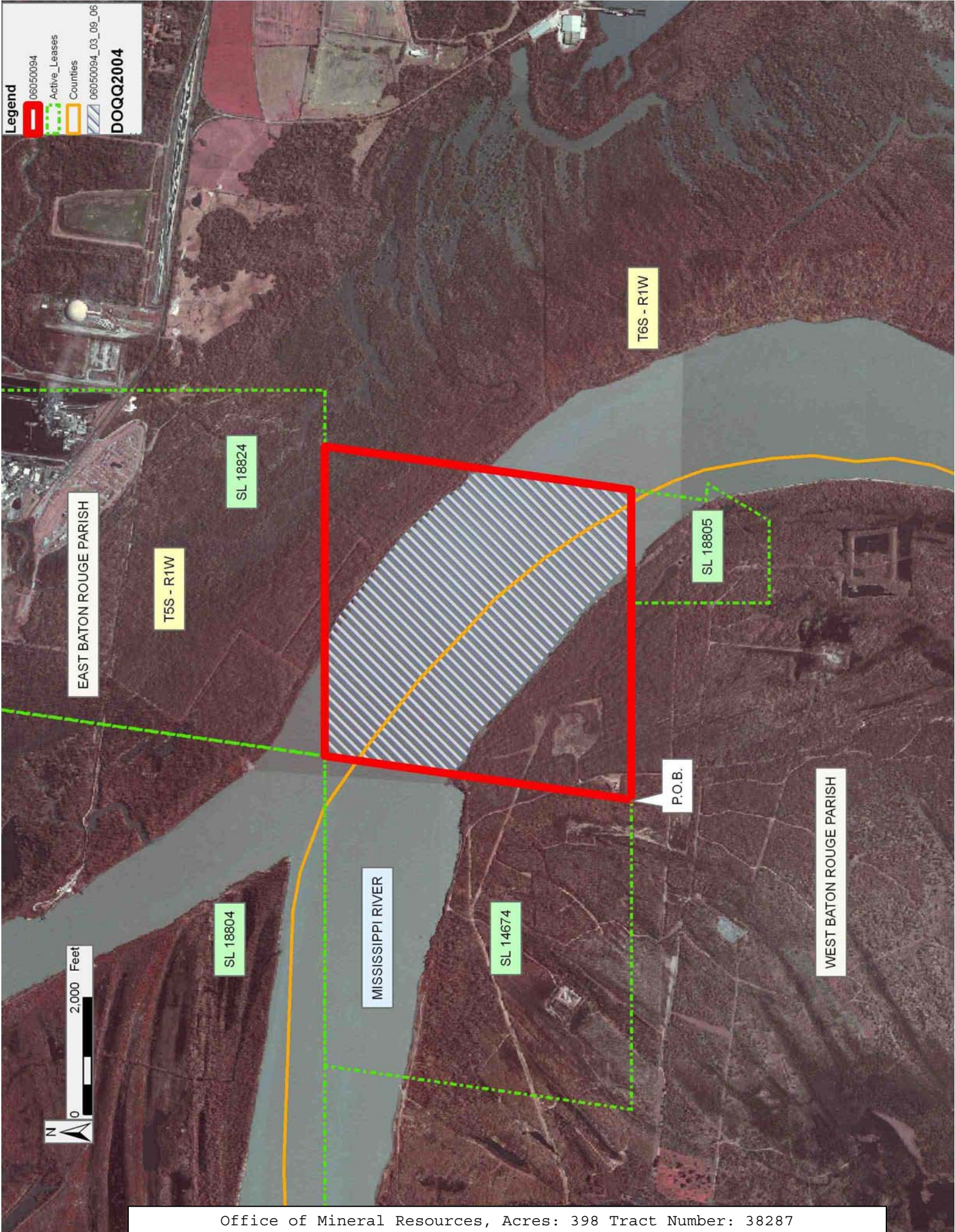
NOTE: The above description of the Tract nominated for lease has been provided and corrected, where required, exclusively by the nomination party. Any mineral lease selected from this Tract and awarded by the Louisiana State Mineral Board shall be without warranty of any kind, either express, implied, or statutory, including, but not limited to, the implied warranties of merchantability and fitness for a particular purpose. Should the mineral lease awarded by the Louisiana State Mineral Board be subsequently modified, cancelled or abrogated due to the existence of conflicting leases, operating agreements, private claims or other future obligations or conditions which may affect all or any portion of the leased Tract, it shall not relieve the Lessee of the obligation to pay any bonus due thereon to the Louisiana State Mineral Board, nor shall the Louisiana State Mineral Board be obligated to refund any consideration paid by the Lessor prior to such modification, cancellation, or abrogation, including, but not limited to, bonuses, rentals and royalties.

Applicant: THEOPHILUS OIL GAS & LAND SERVICES LLC

Bidder	Cash Payment	Price/Acre	Rental	Oil	Gas	Other

Legend

- 06050094
- Active_Leases
- Counties
- 06050094_03_09_06
- DOQQ2004**



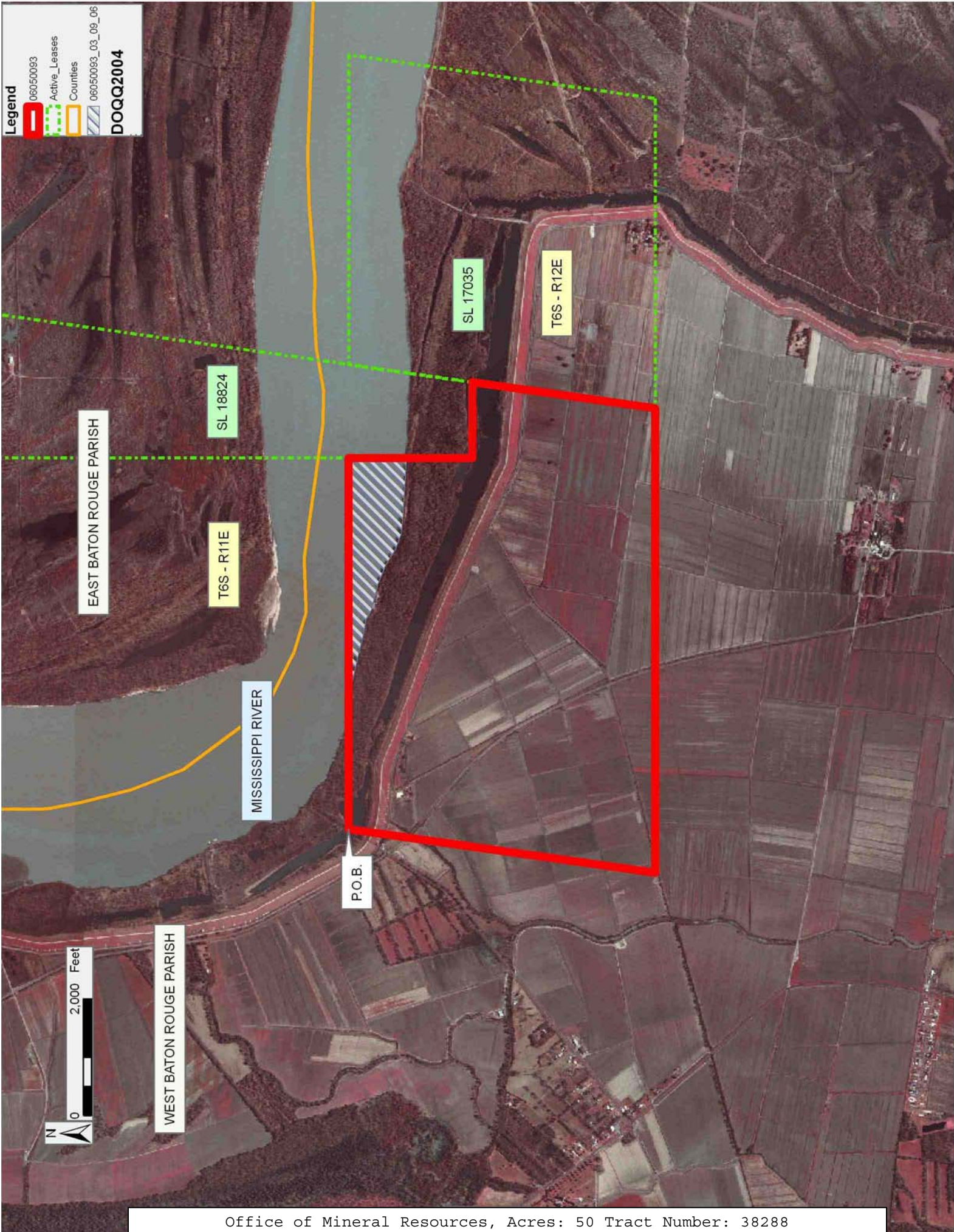
TRACT 38288 - West Baton Rouge Parish, Louisiana

All of the lands now or formerly constituting the beds and bottoms of all water bodies of every nature and description the title of which vests in the State of Louisiana, together with all islands arising therein and other lands formed by accretion or by reliction, where allowed by law, excepting tax adjudicated lands, and not presently under mineral lease and cross hatched on May 10, 2006, situated in West Baton Rouge Parish, Louisiana, and more particularly described as follows: Beginning at a point having Coordinates of X = 2,004,971.75 and Y = 692,457.19; thence East 6,359.25 feet to a point of intersection with the West boundary of State Lease No. 18824, having Coordinates of X = 2,011,331.00 and Y = 692,457.19; thence South 2,117.19 feet along said West boundary to the most Westerly Southwest corner of said State Lease No. 18824, having Coordinates of X = 2,011,331.00 and Y = 690,340.00; thence East 1,298.82 feet to a point of intersection with the Westerly boundary of State Lease No. 17035, also being the most Westerly Southeast corner of State Lease No. 18824, having Coordinates of X = 2,012,629.82 and Y = 690,340.00; thence South 08 degrees 06 minutes 54 seconds West 3,168.03 feet on the West line of said State Lease No. 17035 to its Southwest corner, having Coordinates of X = 2,012,182.62 and Y = 687,203.69; thence West 7,959.95 feet to a point having Coordinates of X = 2,004,222.67 and Y = 687,203.69; thence North 08 degrees 06 minutes 54 seconds East 5,306.64 feet to the point of beginning, containing approximately **50 acres**, all as more particularly outlined on a plat on file in the Office of Mineral Resources, Department of Natural Resources. All bearings, distances and coordinates are based on Louisiana Coordinate System of 1927, (North or South Zone), where applicable.

NOTE: The above description of the Tract nominated for lease has been provided and corrected, where required, exclusively by the nomination party. Any mineral lease selected from this Tract and awarded by the Louisiana State Mineral Board shall be without warranty of any kind, either express, implied, or statutory, including, but not limited to, the implied warranties of merchantability and fitness for a particular purpose. Should the mineral lease awarded by the Louisiana State Mineral Board be subsequently modified, cancelled or abrogated due to the existence of conflicting leases, operating agreements, private claims or other future obligations or conditions which may affect all or any portion of the leased Tract, it shall not relieve the Lessee of the obligation to pay any bonus due thereon to the Louisiana State Mineral Board, nor shall the Louisiana State Mineral Board be obligated to refund any consideration paid by the Lessor prior to such modification, cancellation, or abrogation, including, but not limited to, bonuses, rentals and royalties.

Applicant: THEOPHILUS OIL GAS & LAND SERVICES LLC

Bidder	Cash Payment	Price/Acre	Rental	Oil	Gas	Other



Legend
06050093
Active_Leases
Counties
06050093_03_09_06
DOQQ2004

EAST BATON ROUGE PARISH

SL 18824

T6S - R11E

MISSISSIPPI RIVER

P.O.B.

SL 17035

T6S - R12E

WEST BATON ROUGE PARISH

DOQQ2004

2,000 Feet

N

TRACT 38289 - East Baton Rouge and West Baton Rouge Parishes, Louisiana

All of the lands now or formerly constituting the beds and bottoms of all water bodies of every nature and description the title of which vests in the State of Louisiana, together with all islands arising therein and other lands formed by accretion or by reliction, where allowed by law, excepting tax adjudicated lands, and not presently under mineral lease and cross hatched on May 10, 2006, situated in East Baton Rouge and West Baton Rouge Parishes, Louisiana, and more particularly described as follows: Beginning at point having Coordinates of X = 2,028,669.66 and Y = 691,181.08; thence South 81 degrees 53 minutes 06 seconds East 5,253.48 feet to a point having Coordinates of X = 2,033,870.54 and Y = 690,439.50; thence South 08 degrees 06 minutes 54 seconds West 5,306.65 feet to a point having Coordinates of X = 2,033,121.45 and Y = 685,185.99; thence North 81 degrees 53 minutes 06 seconds West 4,967.41 feet to the most Easterly corner of State Lease No. 18805, having Coordinates of X = 2,028,203.78 and Y = 685,887.19; thence North 81 degrees 53 minutes 06 seconds West 286.09 feet along the most Southerly Northerly boundary of said State Lease No. 18805 to its Easterly corner, having Coordinates of X = 2,027,920.56 and Y = 685,927.57; thence North 08 degrees 06 minutes 56 seconds East 1,289.01 feet along the Easterly boundary of said State Lease No. 18805 to its Northeast corner, having Coordinates of X = 2,028,102.53 and Y = 687,203.68; thence North 08 degrees 06 minutes 54 seconds East 4,017.63 feet to the point of beginning, containing approximately **146 acres**, all as more particularly outlined on a plat on file in the Office of Mineral Resources, Department of Natural Resources. All bearings, distances and coordinates are based on Louisiana Coordinate System of 1927, (North or South Zone), where applicable.

NOTE: The above description of the Tract nominated for lease has been provided and corrected, where required, exclusively by the nomination party. Any mineral lease selected from this Tract and awarded by the Louisiana State Mineral Board shall be without warranty of any kind, either express, implied, or statutory, including, but not limited to, the implied warranties of merchantability and fitness for a particular purpose. Should the mineral lease awarded by the Louisiana State Mineral Board be subsequently modified, cancelled or abrogated due to the existence of conflicting leases, operating agreements, private claims or other future obligations or conditions which may affect all or any portion of the leased Tract, it shall not relieve the Lessee of the obligation to pay any bonus due thereon to the Louisiana State Mineral Board, nor shall the Louisiana State Mineral Board be obligated to refund any consideration paid by the Lessor prior to such modification, cancellation, or abrogation, including, but not limited to, bonuses, rentals and royalties.

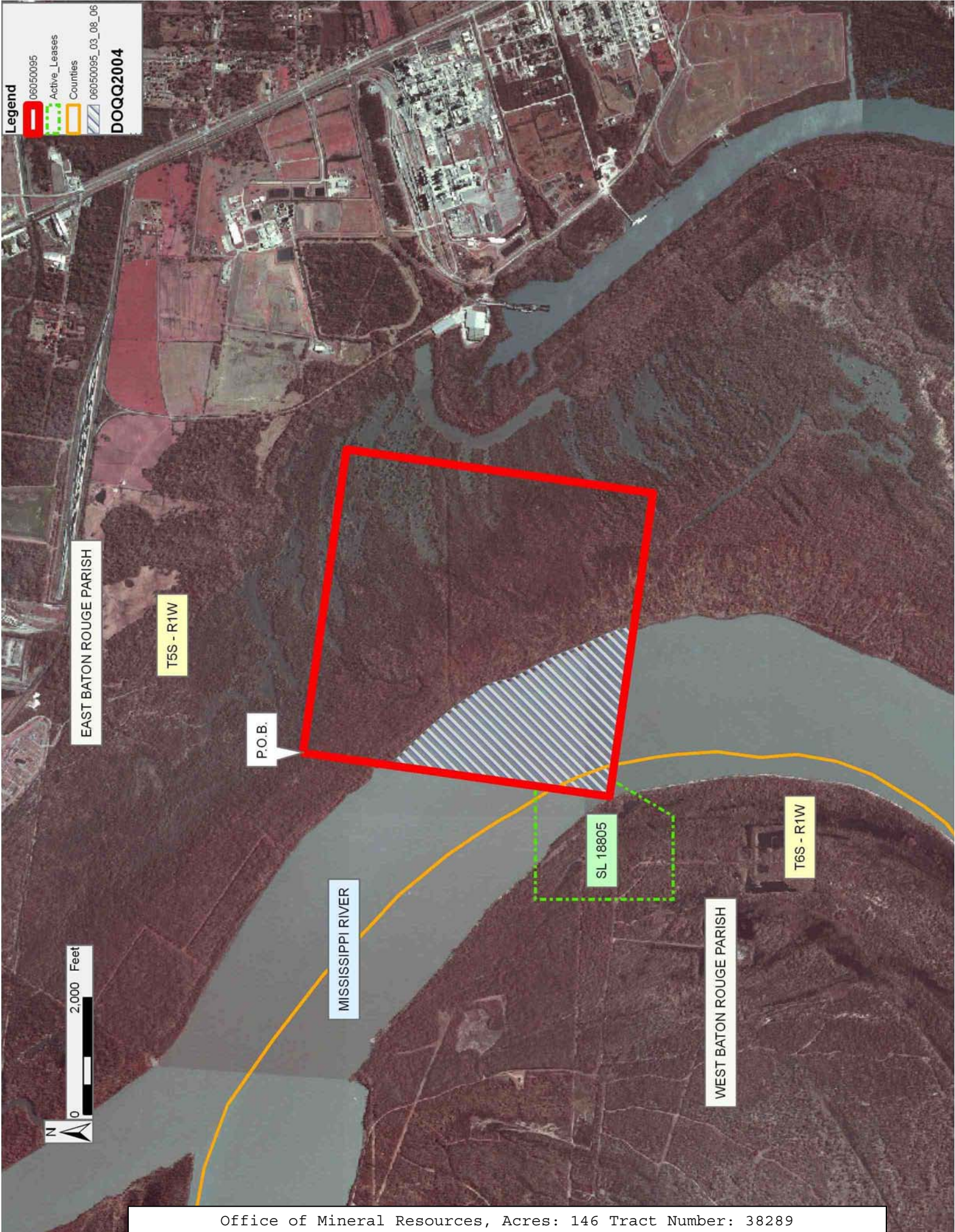
Applicant: THEOPHILUS OIL GAS & LAND SERVICES LLC

Bidder	Cash Payment	Price/Acre	Rental	Oil	Gas	Other

Legend

- 06050095
- Active_Leases
- Counties
- 06050095_03_06_06

DOQQ2004



EAST BATON ROUGE PARISH

T5S - R1W

P.O.B.

MISSISSIPPI RIVER

SL 18805

T6S - R1W

WEST BATON ROUGE PARISH



TRACT 38290 - East Baton Rouge and West Baton Rouge Parishes, Louisiana





All of the lands now or formerly constituting the beds and bottoms of all water bodies of every nature and description the title of which vests in the State of Louisiana, together with all islands arising therein and other lands formed by accretion or by reliction, where allowed by law, excepting tax adjudicated lands, and not presently under mineral lease and cross hatched on May 10, 2006, situated in East Baton Rouge and West Baton Rouge Parishes, Louisiana, and more particularly described as follows: Beginning at point having Coordinates of X = 2,024,022.96 and Y = 678,883.06; thence North 30 degrees 50 minutes 00 seconds East 6,940.24 feet to the most Southerly Southeast corner of State Lease No. 18805, having Coordinates of X = 2,027,580.12 and Y = 684,842.38; thence North 30 degrees 50 minutes 00 seconds East 1,216.79 feet along the Easterly boundary of said State Lease No. 18805 to its most Easterly corner, having Coordinates of X = 2,028,203.78 and Y = 685,887.19; thence South 81 degrees 53 minutes 06 seconds East 7,851.29 feet to a point having Coordinates of X = 2,035,976.46 and Y = 684,778.90; thence South 30 degrees 50 minutes 00 seconds West 7,240.80 to a point having Coordinates of X = 2,032,265.24 and Y = 678,561.50; thence North 87 degrees 45 minutes 57 seconds West 8,248.55 feet to the point of beginning, containing approximately **415 acres**, all as more particularly outlined on a plat on file in the Office of Mineral Resources, Department of Natural Resources. All bearings, distances and coordinates are based on Louisiana Coordinate System of 1927, (North or South Zone), where applicable.

NOTE: The above description of the Tract nominated for lease has been provided and corrected, where required, exclusively by the nomination party. Any mineral lease selected from this Tract and awarded by the Louisiana State Mineral Board shall be without warranty of any kind, either express, implied, or statutory, including, but not limited to, the implied warranties of merchantability and fitness for a particular purpose. Should the mineral lease awarded by the Louisiana State Mineral Board be subsequently modified, cancelled or abrogated due to the existence of conflicting leases, operating agreements, private claims or other future obligations or conditions which may affect all or any portion of the leased Tract, it shall not relieve the Lessee of the obligation to pay any bonus due thereon to the Louisiana State Mineral Board, nor shall the Louisiana State Mineral Board be obligated to refund any consideration paid by the Lessor prior to such modification, cancellation, or abrogation, including, but not limited to, bonuses, rentals and royalties.

Applicant: THEOPHILUS OIL GAS & LAND SERVICES LLC

Bidder	Cash Payment	Price/Acre	Rental	Oil	Gas	Other

Legend

-  06050096
-  Active_Leases
-  Counties
-  06050096_03_06_06

DOQQ2004



EAST BATON ROUGE PARISH

T6S - R1W

SL 18805

WEST BATON ROUGE PARISH

P.O.B.

MISSISSIPPI RIVER



TRACT 38291 - St. Landry Parish, Louisiana

All of the lands now or formerly constituting the beds and bottoms of all water bodies of every nature and description the title of which vests in the State of Louisiana, together with all islands arising therein and other lands formed by accretion or by reliction, where allowed by law, excepting tax adjudicated lands, and not presently under mineral lease and cross hatched on May 10, 2006, situated in St. Landry Parish, Louisiana, and more particularly described as follows: Beginning at a point having Coordinates of X = 1,852,000.00 and Y = 676,300.00; thence West 10,800.00 feet to a point having Coordinates of X = 1,841,200.00 and Y = 676,300.00; thence North 5,400.00 feet to a point having Coordinates of X = 1,841,200.00 and Y = 681,700.00; thence East 10,800.00 feet to a point having Coordinates of X = 1,852,000.00 and Y = 681,700.00; thence South 5,400.00 feet to the point of beginning, containing approximately **21 acres**, all as more particularly outlined on a plat on file in the Office of Mineral Resources, Department of Natural Resources. All bearings, distances and coordinates are based on Louisiana Coordinate System of 1927, (North or South Zone), where applicable.

NOTE: The above description of the Tract nominated for lease has been provided and corrected, where required, exclusively by the nomination party. Any mineral lease selected from this Tract and awarded by the Louisiana State Mineral Board shall be without warranty of any kind, either express, implied, or statutory, including, but not limited to, the implied warranties of merchantability and fitness for a particular purpose. Should the mineral lease awarded by the Louisiana State Mineral Board be subsequently modified, cancelled or abrogated due to the existence of conflicting leases, operating agreements, private claims or other future obligations or conditions which may affect all or any portion of the leased Tract, it shall not relieve the Lessee of the obligation to pay any bonus due thereon to the Louisiana State Mineral Board, nor shall the Louisiana State Mineral Board be obligated to refund any consideration paid by the Lessor prior to such modification, cancellation, or abrogation, including, but not limited to, bonuses, rentals and royalties.

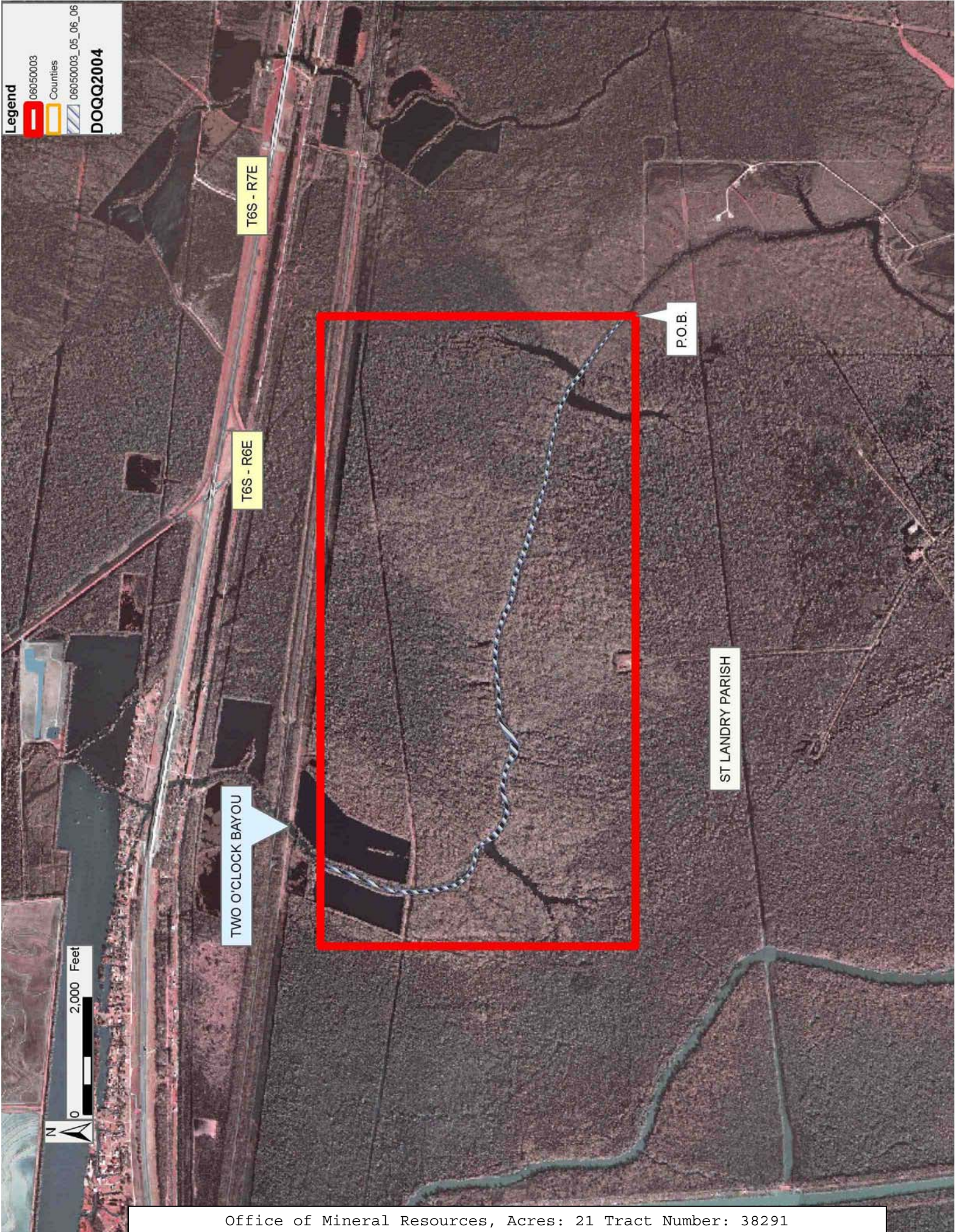
Applicant: COOPER RESOURCE DEVELOPMENT

Bidder	Cash Payment	Price/Acre	Rental	Oil	Gas	Other

Legend

-  06050003
-  Counties
-  06050003_05_06_06

DOQQ2004



TRACT 38292 - East Baton Rouge and West Baton Rouge Parishes, Louisiana





All of the lands now or formerly constituting the beds and bottoms of all water bodies of every nature and description the title of which vests in the State of Louisiana, together with all islands arising therein and other lands formed by accretion or by reliction, where allowed by law, excepting tax adjudicated lands, and not presently under mineral lease and cross hatched on May 10, 2006, situated in East Baton Rouge and West Baton Rouge Parishes, Louisiana, and more particularly described as follows: Beginning at a point having Coordinates of X = 2,012,634.47 and Y = 679,327.36; thence South 87 degrees 45 minutes 57 seconds East 6,598.78 feet to a point having Coordinates of X = 2,019,228.24 and Y = 697,070.12; thence South 02 degrees 14 minutes 03 seconds West 10,561.95 feet to a point having Coordinates of X = 2,018,816.49 and Y = 668,516.19; thence North 87 degrees 45 minutes 57 seconds West 6,598.78 feet to a point having Coordinates of X = 2,012,222.73 and Y = 668,773.44; thence North 02 degrees 14 minutes 03 seconds East 10,561.95 feet to the point of beginning, containing approximately **550 acres**, all as more particularly outlined on a plat on file in the Office of Mineral Resources, Department of Natural Resources. All bearings, distances and coordinates are based on Louisiana Coordinate System of 1927, (North or South Zone), where applicable.

NOTE: The above description of the Tract nominated for lease has been provided and corrected, where required, exclusively by the nomination party. Any mineral lease selected from this Tract and awarded by the Louisiana State Mineral Board shall be without warranty of any kind, either express, implied, or statutory, including, but not limited to, the implied warranties of merchantability and fitness for a particular purpose. Should the mineral lease awarded by the Louisiana State Mineral Board be subsequently modified, cancelled or abrogated due to the existence of conflicting leases, operating agreements, private claims or other future obligations or conditions which may affect all or any portion of the leased Tract, it shall not relieve the Lessee of the obligation to pay any bonus due thereon to the Louisiana State Mineral Board, nor shall the Louisiana State Mineral Board be obligated to refund any consideration paid by the Lessor prior to such modification, cancellation, or abrogation, including, but not limited to, bonuses, rentals and royalties.

Bidder	Cash Payment	Price/Acre	Rental	Oil	Gas	Other

Applicant: THEOPHILUS OIL GAS & LAND SERVICES LLC

Legend

-  06050097
-  Active_Leases
-  Counties
-  06050097_03_06_06

DOQQ2004



TRACT 38293 - St. Landry Parish, Louisiana

All of the lands now or formerly constituting the beds and bottoms of all water bodies of every nature and description the title of which vests in the State of Louisiana, together with all islands arising therein and other lands formed by accretion or by reliction, where allowed by law, excepting tax adjudicated lands, and not presently under mineral lease and cross hatched on May 10, 2006, situated in St. Landry Parish, Louisiana, and more particularly described as follows: Beginning at a point having Coordinates of X = 1,841,200.00 and Y = 681,700.00; thence South 10,900.00 feet to a point having Coordinates of X = 1,841,200.00 and Y = 670,800.00; thence West 5,600.00 feet to a point having Coordinates of X = 1,835,600.00 and Y = 670,800.00; thence North 7,100.00 feet to a point on the South line of State Lease No. 18558 having Coordinates of X = 1,835,600.00 and Y = 677,900.00; thence along the boundary of said State Lease No. 18558 the following courses and distances: East 1,400.00 feet to its Southeast corner having Coordinates of X = 1,837,000.00 and Y = 677,900.00 and North 3,800.00 feet to a point having Coordinates of X = 1,837,000.00 and Y = 681,700.00; thence East 4,200.00 feet to the point of beginning, containing approximately **48 acres**, all as more particularly outlined on a plat on file in the Office of Mineral Resources, Department of Natural Resources. All bearings, distances and coordinates are based on Louisiana Coordinate System of 1927, (North or South Zone), where applicable.

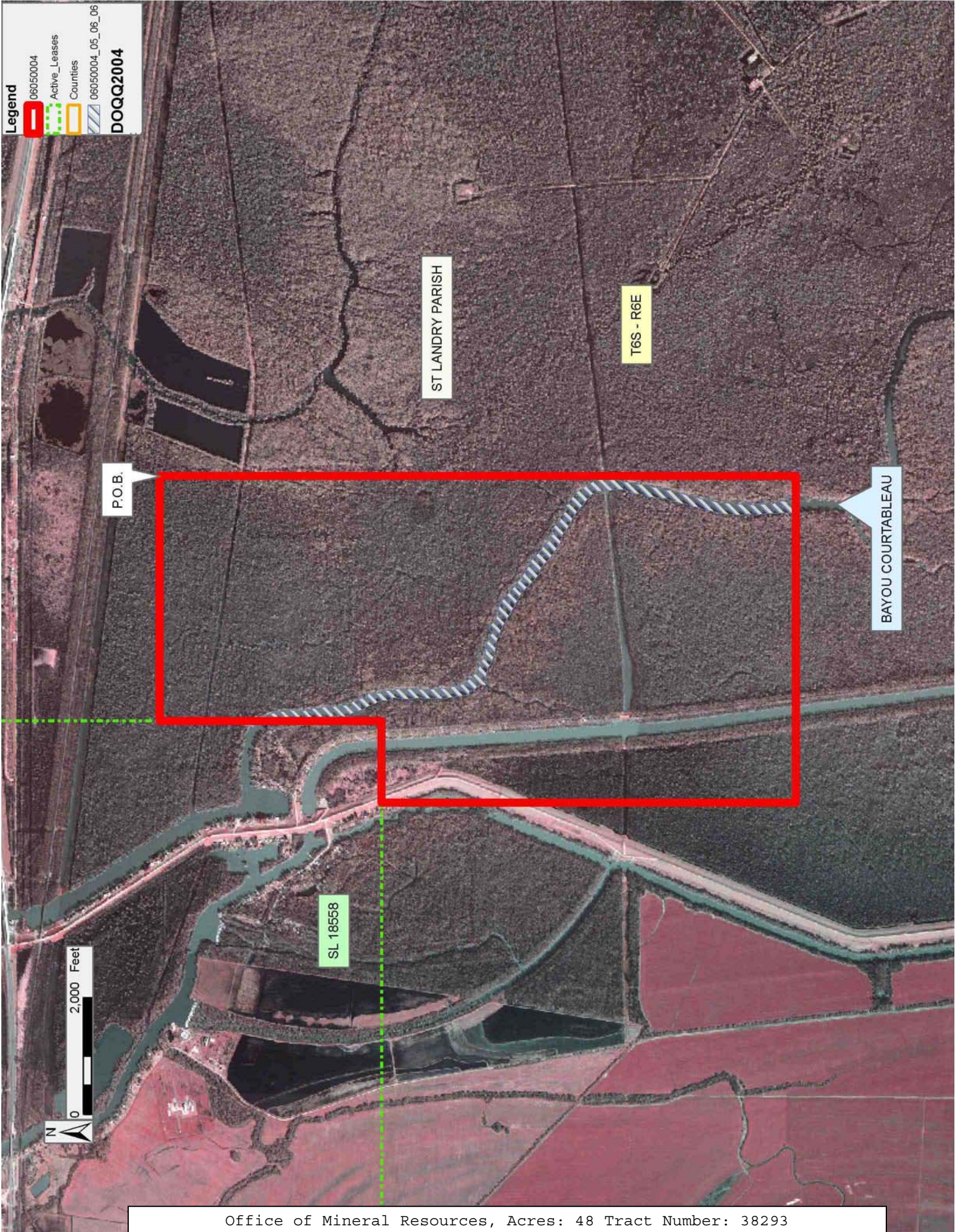
NOTE: The above description of the Tract nominated for lease has been provided and corrected, where required, exclusively by the nomination party. Any mineral lease selected from this Tract and awarded by the Louisiana State Mineral Board shall be without warranty of any kind, either express, implied, or statutory, including, but not limited to, the implied warranties of merchantability and fitness for a particular purpose. Should the mineral lease awarded by the Louisiana State Mineral Board be subsequently modified, cancelled or abrogated due to the existence of conflicting leases, operating agreements, private claims or other future obligations or conditions which may affect all or any portion of the leased Tract, it shall not relieve the Lessee of the obligation to pay any bonus due thereon to the Louisiana State Mineral Board, nor shall the Louisiana State Mineral Board be obligated to refund any consideration paid by the Lessor prior to such modification, cancellation, or abrogation, including, but not limited to, bonuses, rentals and royalties.

Applicant: COOPER RESOURCE DEVELOPMENT

Bidder	Cash Payment	Price/Acre	Rental	Oil	Gas	Other

Legend

- 06050004
- Active_Leases
- Counties
- 06050004_05_06_06
- DOQQ2004**



TRACT 38294 - East Baton Rouge and West Baton Rouge Parishes, Louisiana




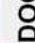
All of the lands now or formerly constituting the beds and bottoms of all water bodies of every nature and description the title of which vests in the State of Louisiana, together with all islands arising therein and other lands formed by accretion or by reliction, where allowed by law, excepting tax adjudicated lands, and not presently under mineral lease and cross hatched on May 10, 2006, situated in East Baton Rouge and West Baton Rouge Parishes, Louisiana, and more particularly described as follows: Beginning at a point having Coordinates of X = 2,019,228.24 and Y = 679,070.12; thence South 87 degrees 45 minutes 57 seconds East 5,279.02 feet to a point having Coordinates of X = 2,024,503.25 and Y = 678,864.32; thence South 02 degrees 14 minutes 03 seconds West 10,561.95 feet to a point having Coordinates of X = 2,024,091.50 and Y = 668,310.40; thence North 87 degrees 45 minutes 57 seconds West 5,279.02 feet to a point having Coordinates of X = 2,018,816.49 and Y = 668,516.19; thence North 02 degrees 14 minutes 03 seconds East 10,561.95 feet to the point of beginning, containing approximately **462 acres**, all as more particularly outlined on a plat on file in the Office of Mineral Resources, Department of Natural Resources. All bearings, distances and coordinates are based on Louisiana Coordinate System of 1927, (North or South Zone), where applicable.

NOTE: The above description of the Tract nominated for lease has been provided and corrected, where required, exclusively by the nomination party. Any mineral lease selected from this Tract and awarded by the Louisiana State Mineral Board shall be without warranty of any kind, either express, implied, or statutory, including, but not limited to, the implied warranties of merchantability and fitness for a particular purpose. Should the mineral lease awarded by the Louisiana State Mineral Board be subsequently modified, cancelled or abrogated due to the existence of conflicting leases, operating agreements, private claims or other future obligations or conditions which may affect all or any portion of the leased Tract, it shall not relieve the Lessee of the obligation to pay any bonus due thereon to the Louisiana State Mineral Board, nor shall the Louisiana State Mineral Board be obligated to refund any consideration paid by the Lessor prior to such modification, cancellation, or abrogation, including, but not limited to, bonuses, rentals and royalties.

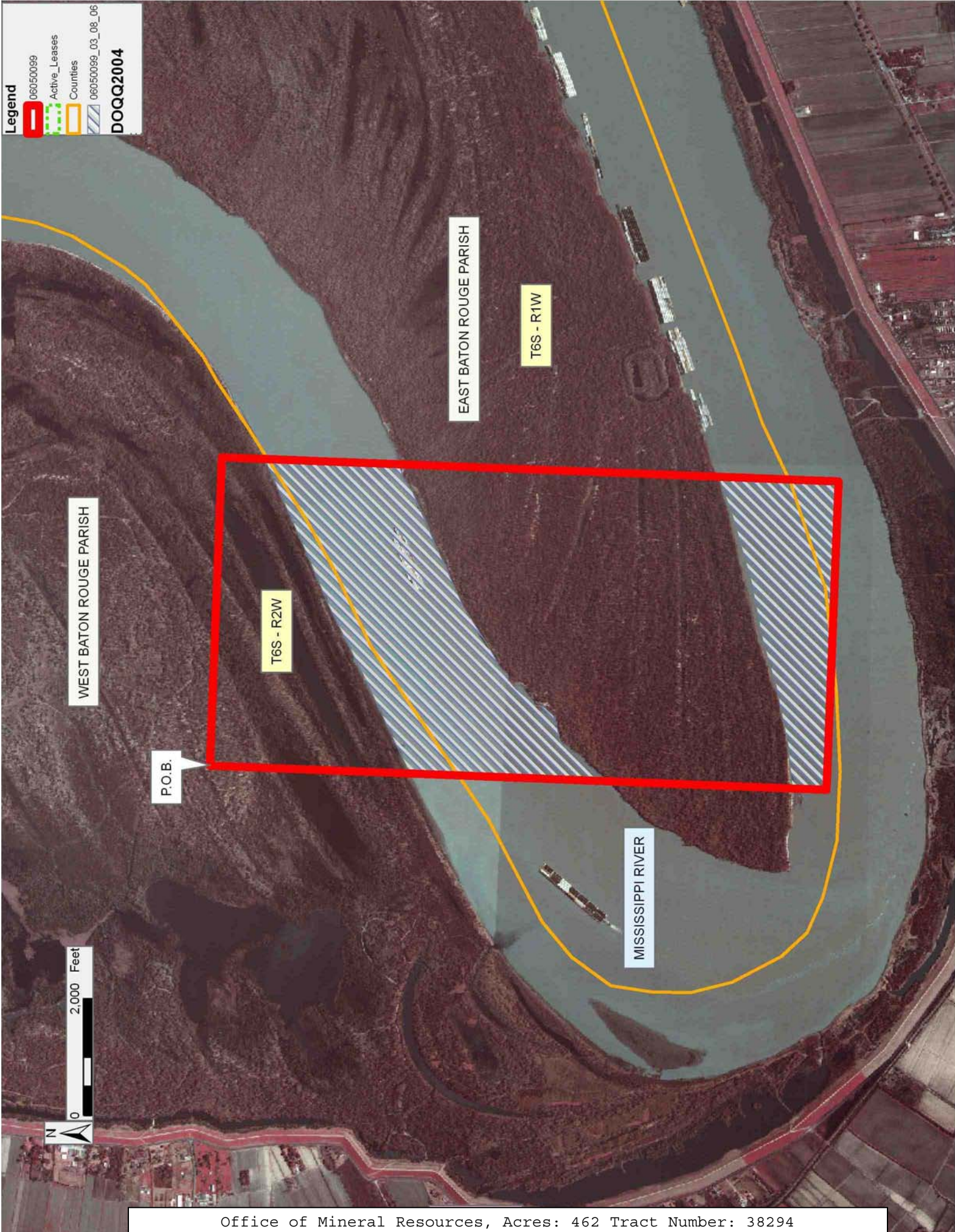
Bidder	Cash Payment	Price/Acre	Rental	Oil	Gas	Other

Applicant: THEOPHILUS OIL GAS & LAND SERVICES LLC

Legend

-  06050099
-  Active_Leases
-  Counties
-  06050099_03_06_06

DOQQ2004



WEST BATON ROUGE PARISH

EAST BATON ROUGE PARISH

T6S - R1W

T6S - R2W

P.O.B.

MISSISSIPPI RIVER

2,000 Feet



TRACT 38295 - East Baton Rouge and West Baton Rouge Parishes, Louisiana

All of the lands now or formerly constituting the beds and bottoms of all water bodies of every nature and description the title of which vests in the State of Louisiana, together with all islands arising therein and other lands formed by accretion or by reliction, where allowed by law, excepting tax adjudicated lands, and not presently under mineral lease and cross hatched on May 10, 2006, situated in East Baton Rouge and West Baton Rouge Parishes, Louisiana, and more particularly described as follows: Beginning at a point having Coordinates of X = 2,024,503.25 and Y = 678,864.32; thence South 87 degrees 45 minutes 57 seconds East 5,279.02 feet to a point having Coordinates of X = 2,029,778.26 and Y = 678,658.52; thence South 02 degrees 14 minutes 03 seconds West 10,561.95 feet to a point having Coordinates of X = 2,029,366.52 and Y = 668,104.60; thence North 87 degrees 45 minutes 57 seconds West 5,279.02 feet to a point having Coordinates of X = 2,024,091.50 and Y = 668,310.40; thence North 02 degrees 14 minutes 03 seconds East 10,561.95 feet to the point of beginning, containing approximately **462 acres**, all as more particularly outlined on a plat on file in the Office of Mineral Resources, Department of Natural Resources. All bearings, distances and coordinates are based on Louisiana Coordinate System of 1927, (North or South Zone), where applicable.

NOTE: The above description of the Tract nominated for lease has been provided and corrected, where required, exclusively by the nomination party. Any mineral lease selected from this Tract and awarded by the Louisiana State Mineral Board shall be without warranty of any kind, either express, implied, or statutory, including, but not limited to, the implied warranties of merchantability and fitness for a particular purpose. Should the mineral lease awarded by the Louisiana State Mineral Board be subsequently modified, cancelled or abrogated due to the existence of conflicting leases, operating agreements, private claims or other future obligations or conditions which may affect all or any portion of the leased Tract, it shall not relieve the Lessee of the obligation to pay any bonus due thereon to the Louisiana State Mineral Board, nor shall the Louisiana State Mineral Board be obligated to refund any consideration paid by the Lessor prior to such modification, cancellation, or abrogation, including, but not limited to, bonuses, rentals and royalties.

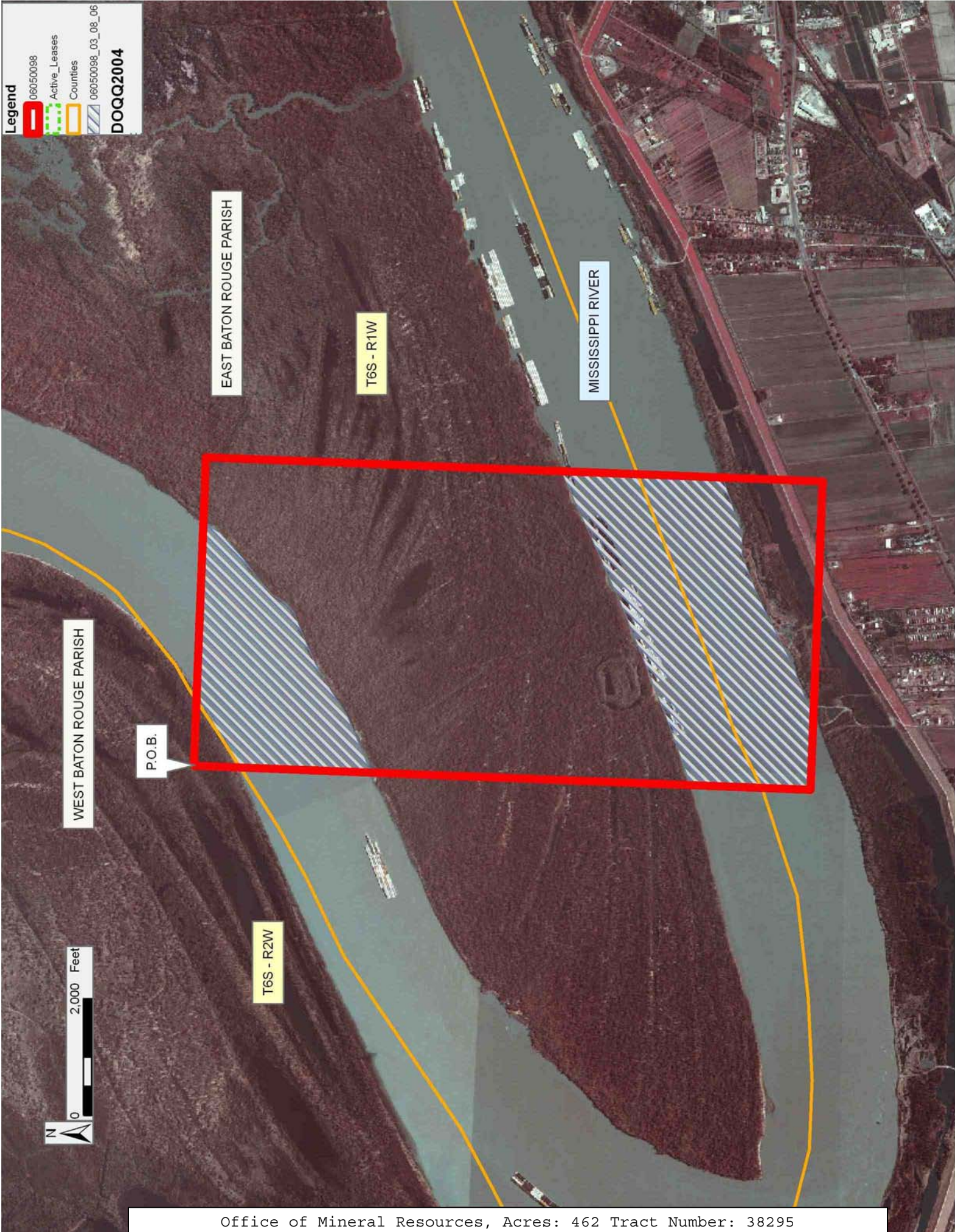
Bidder	Cash Payment	Price/Acre	Rental	Oil	Gas	Other

Applicant: THEOPHILUS OIL GAS & LAND SERVICES LLC

Legend

- 06050098
- Active_Leases
- Counties
- 06050098_03_06_06

DOQQ2004



EAST BATON ROUGE PARISH

T6S - R1W

MISSISSIPPI RIVER

WEST BATON ROUGE PARISH

P.O.B.

T6S - R2W

