

TRACT 38276 - Bossier and Caddo Parishes, Louisiana





All of the lands now or formerly constituting the beds and bottoms of all water bodies of every nature and description the title of which vests in the State of Louisiana, together with all islands arising therein and other lands formed by accretion or by reliction, where allowed by law, excepting tax adjudicated lands, and not presently under mineral lease and cross hatched on May 10, 2006, situated in Bossier and Caddo Parishes, Louisiana, and more particularly described as follows: Beginning at a point having Coordinates of X = 1,586,800.14 and Y = 759,061.13; thence South 89 degrees 45 minutes 14 seconds East 15,989.88 feet to a point having Coordinates of X = 1,602,789.87 and Y = 758,992.44; thence South 01 degrees 19 minutes 28 seconds West 15,947.82 feet to a point having Coordinates of X = 1,602,421.26 and Y = 743,048.88; thence North 89 degrees 07 minutes 36 seconds West 15,880.61 feet to a point having Coordinates of X = 1,586,542.49 and Y = 743,290.94; thence North 00 degrees 56 minutes 10 seconds East 15,772.29 feet to the point of beginning, containing approximately **437.42 acres**, all as more particularly outlined on a plat on file in the Office of Mineral Resources, Department of Natural Resources. All bearings, distances and coordinates are based on Louisiana Coordinate System of 1927, (North or South Zone), where applicable.

NOTE: The above description of the Tract nominated for lease has been provided and corrected, where required, exclusively by the nomination party. Any mineral lease selected from this Tract and awarded by the Louisiana State Mineral Board shall be without warranty of any kind, either express, implied, or statutory, including, but not limited to, the implied warranties of merchantability and fitness for a particular purpose. Should the mineral lease awarded by the Louisiana State Mineral Board be subsequently modified, cancelled or abrogated due to the existence of conflicting leases, operating agreements, private claims or other future obligations or conditions which may affect all or any portion of the leased Tract, it shall not relieve the Lessee of the obligation to pay any bonus due thereon to the Louisiana State Mineral Board, nor shall the Louisiana State Mineral Board be obligated to refund any consideration paid by the Lessor prior to such modification, cancellation, or abrogation, including, but not limited to, bonuses, rentals and royalties.

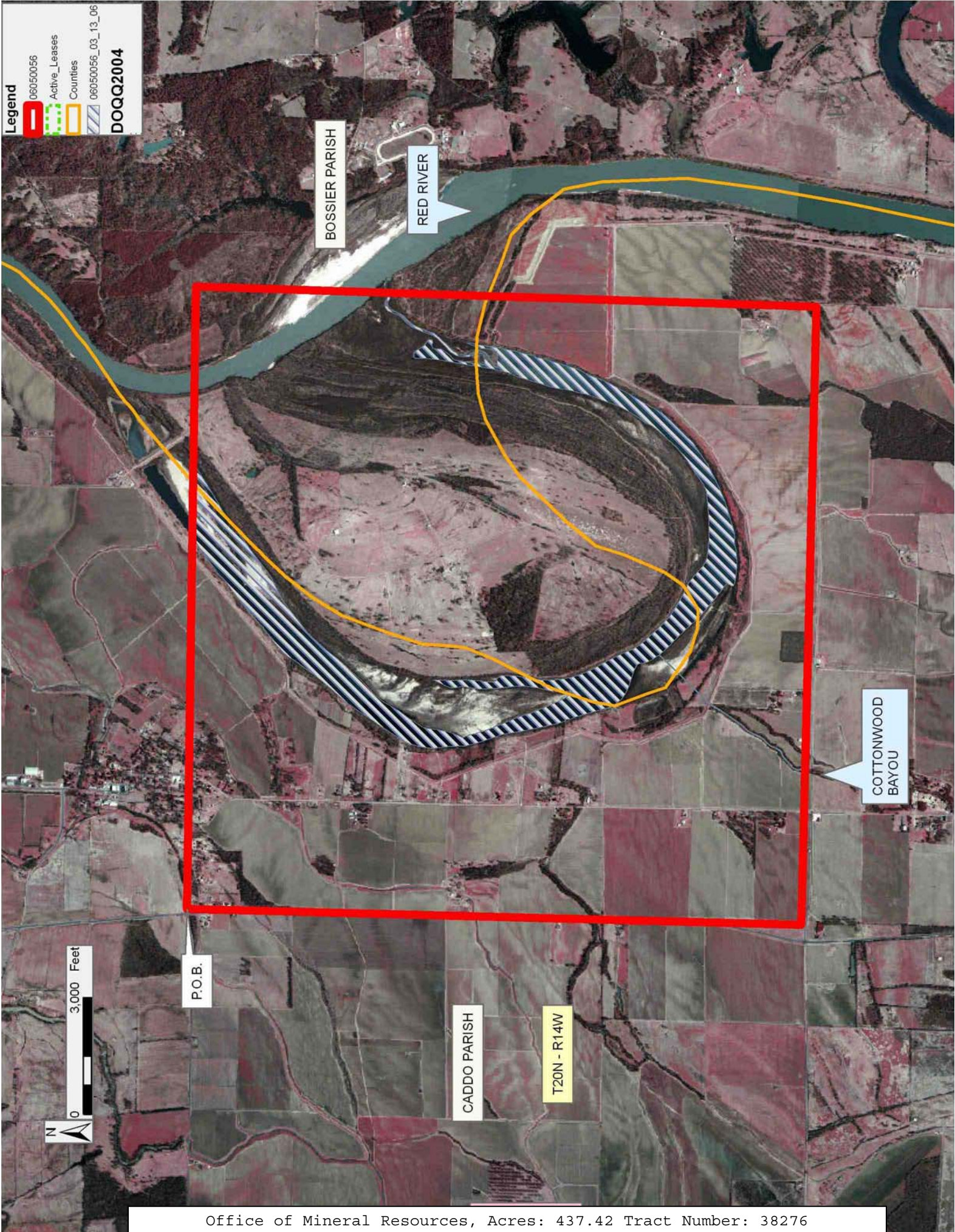
Applicant: DYNAMIC ENERGY

Bidder	Cash Payment	Price/Acre	Rental	Oil	Gas	Other

Legend

-  06050056
-  Active_Leases
-  Counties
-  06050056_03_13_06

DOQQ2004



TRACT 38277 - Catahoula Parish, Louisiana

All of the lands now or formerly constituting the beds and bottoms of all water bodies of every nature and description the title of which vests in the State of Louisiana, together with all islands arising therein and other lands formed by accretion or by reliction, where allowed by law, excepting tax adjudicated lands, and not presently under mineral lease and cross hatched on May 10, 2006, situated in Catahoula Parish, Louisiana, and more particularly described as follows: Beginning at a point having Coordinates of X = 2,274,853.75 and Y = 427,552.26; thence East 10,560.00 feet to a point having Coordinates of X = 2,285,413.75 and Y = 427,552.26; thence South 10,560.00 feet to a point having Coordinates of X = 2,285,413.75 and Y = 416,992.26; thence West 10,560.00 feet to a point having Coordinates of X = 2,274,853.75 and Y = 416,992.26; thence North 10,560.00 feet to the point of beginning, containing approximately **10 acres**, all as more particularly outlined on a plat on file in the Office of Mineral Resources, Department of Natural Resources. All bearings, distances and coordinates are based on Louisiana Coordinate System of 1927, (North or South Zone), where applicable.

NOTE: The above description of the Tract nominated for lease has been provided and corrected, where required, exclusively by the nomination party. Any mineral lease selected from this Tract and awarded by the Louisiana State Mineral Board shall be without warranty of any kind, either express, implied, or statutory, including, but not limited to, the implied warranties of merchantability and fitness for a particular purpose. Should the mineral lease awarded by the Louisiana State Mineral Board be subsequently modified, cancelled or abrogated due to the existence of conflicting leases, operating agreements, private claims or other future obligations or conditions which may affect all or any portion of the leased Tract, it shall not relieve the Lessee of the obligation to pay any bonus due thereon to the Louisiana State Mineral Board, nor shall the Louisiana State Mineral Board be obligated to refund any consideration paid by the Lessor prior to such modification, cancellation, or abrogation, including, but not limited to, bonuses, rentals and royalties.

Applicant: CYPRESS ENERGY CORPORATION

Bidder	Cash Payment	Price/Acre	Rental	Oil	Gas	Other

Legend

- 06050070
- Blocks
- Active_Leases
- Counties
- 06050070_03_15_06

DOQQ2004

T10N - R9E

TENSAS PARISH

CATAHOULA PARISH



LITTLE TIGER BAYOU

0 2,000 Feet

P.O.B.

T10N - R8E

TRACT 38278 - East Baton Rouge, East Feliciana, Pointe Coupee, West Baton Rouge and West Feliciana Parishes, Louisiana

All of the lands now or formerly constituting the beds and bottoms of all water bodies of every nature and description the title of which vests in the State of Louisiana, together with all islands arising therein and other lands formed by accretion or by reliction, where allowed by law, excepting tax adjudicated lands, and not presently under mineral lease and cross hatched on May 10, 2006, situated in East Baton Rouge, East Feliciana, Pointe Coupee, West Baton Rouge and West Feliciana Parishes, Louisiana, and more particularly described as follows: Beginning at a point having Coordinates of X = 2,006,812.95 and Y = 723,978.18; thence East 3,832.23 feet to point of intersection with the West boundary of State Lease No. 7591 as amended, having Coordinates of X = 2,010,645.18 and Y = 723,978.18; thence along said West boundary the following courses and distances: South 46 degrees 39 minutes 31 seconds West 102.24 feet; South 41 degrees 10 minutes 29 seconds West 545.83 feet; South 35 degrees 27 minutes 17 seconds West 545.00 feet; South 29 degrees 44 minutes 20 seconds West 545.00 feet; South 79 degrees 12 minutes 12 seconds East 1,094.37 feet; South 31 degrees 29 minutes 29 seconds West 522.61 feet; South 17 degrees 02 minutes 23 seconds West 500.00 feet; South 02 degrees 54 minutes 35 seconds West 500.00 feet; South 11 degrees 13 minutes 14 seconds East 500.00 feet; South 24 degrees 08 minutes 31 seconds East 500.00 feet; South 35 degrees 51 minutes 19 seconds East 500.00 feet; South 47 degrees 34 minutes 05 seconds East 500.00 feet; South 59 degrees 16 minutes 53 seconds East 500.00 feet; South 67 degrees 13 minutes 42 seconds East 500.00 feet; and South 71 degrees 24 minutes 34 seconds East 279.22 feet to a point having Coordinates of X = 2,012,374.32 and Y = 718,724.68; thence West 6,310.46 feet to a point having Coordinates of X = 2,006,063.87 and Y = 718,724.68; thence North 08 degrees 06 minutes 54 seconds East 5,306.64 feet to the point of beginning, containing approximately **362 acres**, all as more particularly outlined on a plat on file in the Office of Mineral Resources, Department of Natural Resources. All bearings, distances and coordinates are based on Louisiana Coordinate System of 1927, (North or South Zone), where applicable.

NOTE: The above description of the Tract nominated for lease has been provided and corrected, where required, exclusively by the nomination party. Any mineral lease selected from this Tract and awarded by the Louisiana State Mineral Board shall be without warranty of any kind, either express, implied, or statutory, including, but not limited to, the implied warranties of merchantability and fitness for a particular purpose. Should the mineral lease awarded by the Louisiana State Mineral Board be subsequently modified, cancelled or abrogated due to the existence of conflicting leases, operating agreements, private claims or other future obligations or conditions which may affect all or any portion of the leased Tract, it shall not relieve the Lessee of the obligation to pay any bonus due thereon to the Louisiana State Mineral Board, nor shall the Louisiana State Mineral Board be obligated to refund any consideration

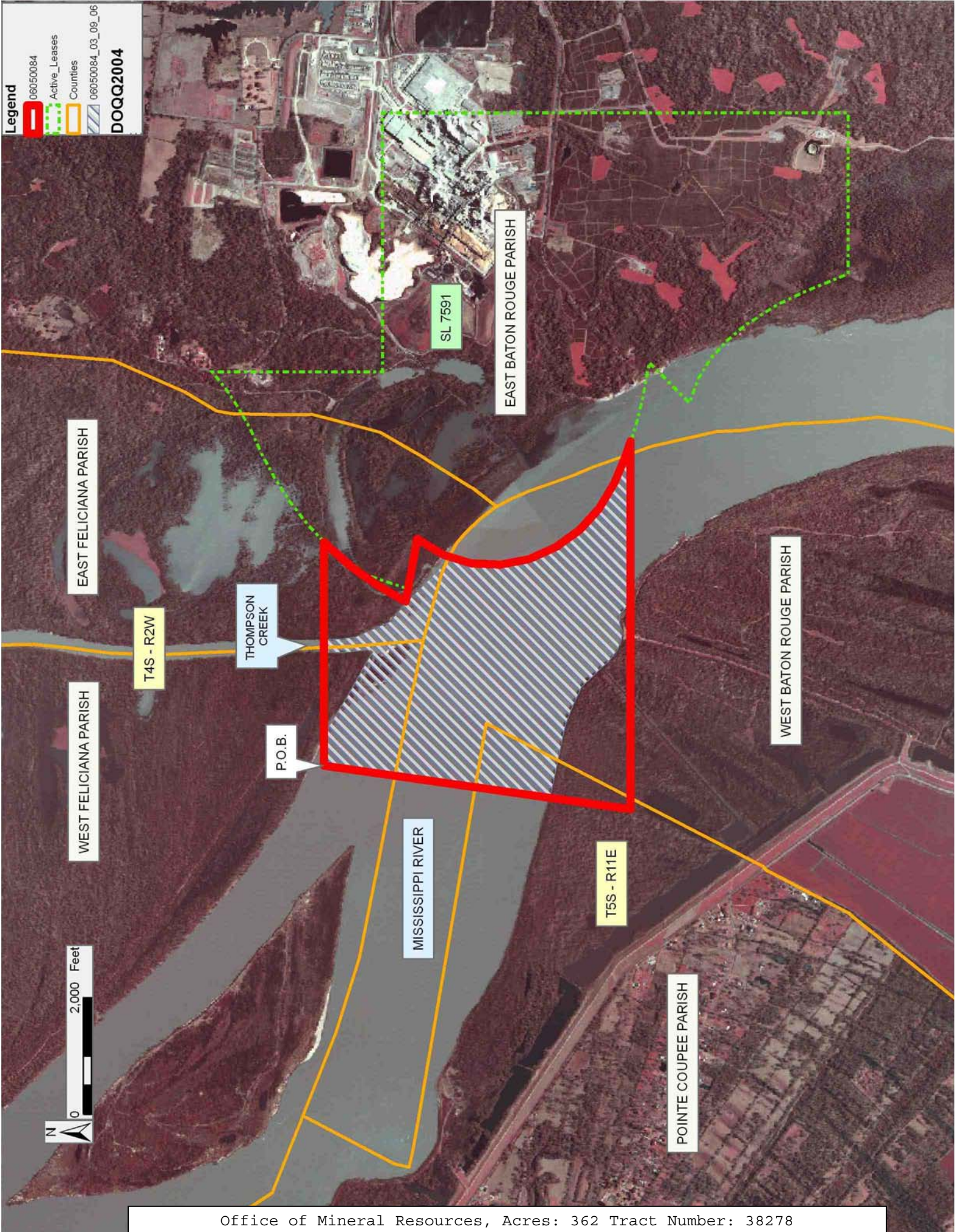
paid by the Lessor prior to such modification, cancellation, or abrogation, including, but not limited to, bonuses, rentals and royalties.

Applicant: THEOPHILUS OIL GAS & LAND SERVICES LLC

Bidder	Cash Payment	Price/Acre	Rental	Oil	Gas	Other

Legend

- 06050084
- Active_Leases
- Counties
- 06050084_03_09_06
- DOQQ2004**



TRACT 38279 - East Baton Rouge and West Baton Rouge Parishes, Louisiana

All of the lands now or formerly constituting the beds and bottoms of all water bodies of every nature and description the title of which vests in the State of Louisiana, together with all islands arising therein and other lands formed by accretion or by reliction, where allowed by law, excepting tax adjudicated lands, and not presently under mineral lease and cross hatched on May 10, 2006, situated in East Baton Rouge and West Baton Rouge Parishes, Louisiana, and more particularly described as follows: Beginning at a point having Coordinates of X = 2,008,717.18 and Y = 718,724.68; thence East 3,657.14 feet to point of intersection with the West boundary of State Lease No. 7591, as amended, having Coordinates of X = 2,012,374.32 and Y = 718,724.68; thence along said West boundary the following courses and distances: South 71 degrees 24 minutes 34 seconds East 220.78 feet; South 75 degrees 35 minutes 25 seconds East 500.00 feet; South 79 degrees 46 minutes 17 seconds East 500.00 feet; South 77 degrees 09 minutes 26 seconds East 164.07 feet; South 45 degrees 03 minutes 01 seconds West 226.03 feet; South 45 degrees 03 minutes 01 seconds West 750.46 feet; South 73 degrees 24 minutes 12 seconds East 119.38 feet; South 69 degrees 16 minutes 46 seconds East 316.52 feet; South 58 degrees 50 minutes 56 seconds East 419.78 feet; South 46 degrees 24 minutes 51 seconds East 390.55 feet; South 40 degrees 26 minutes 02 seconds East 416.58 feet; South 32 degrees 59 minutes 45 seconds East 618.87 feet; South 26 degrees 09 minutes 09 seconds East 555.88 feet; South 22 degrees 07 minutes 13 seconds East 1,307.74 feet; South 26 degrees 00 minutes 50 seconds East 737.82 feet; and South 28 degrees 02 minutes 11 seconds East 395.47 feet to a point having Coordinates of X = 2,015,935.51 and Y = 713,523.52; thence South 08 degrees 06 minutes 54 seconds West 52.87 feet to a point having Coordinates of X = 2,015,928.05 and Y = 713,471.18; thence West 7,959.95 feet to a point having Coordinates of X = 2,007,968.10 and Y = 713,471.18; thence North 08 degrees 06 minutes 54 seconds East 5,306.64 feet to the point of beginning, containing approximately **312 acres**, all as more particularly outlined on a plat on file in the Office of Mineral Resources, Department of Natural Resources. All bearings, distances and coordinates are based on Louisiana Coordinate System of 1927, (North or South Zone), where applicable.

NOTE: The above description of the Tract nominated for lease has been provided and corrected, where required, exclusively by the nomination party. Any mineral lease selected from this Tract and awarded by the Louisiana State Mineral Board shall be without warranty of any kind, either express, implied, or statutory, including, but not limited to, the implied warranties of merchantability and fitness for a particular purpose. Should the mineral lease awarded by the Louisiana State Mineral Board be subsequently modified, cancelled or abrogated due to the existence of conflicting leases, operating agreements, private claims or other future obligations or conditions which may affect all or any portion of the leased Tract, it shall not relieve the Lessee of the obligation to pay any bonus due thereon to the Louisiana State Mineral Board, nor shall the Louisiana State Mineral Board be obligated to refund any consideration

paid by the Lessor prior to such modification, cancellation, or abrogation, including, but not limited to, bonuses, rentals and royalties.

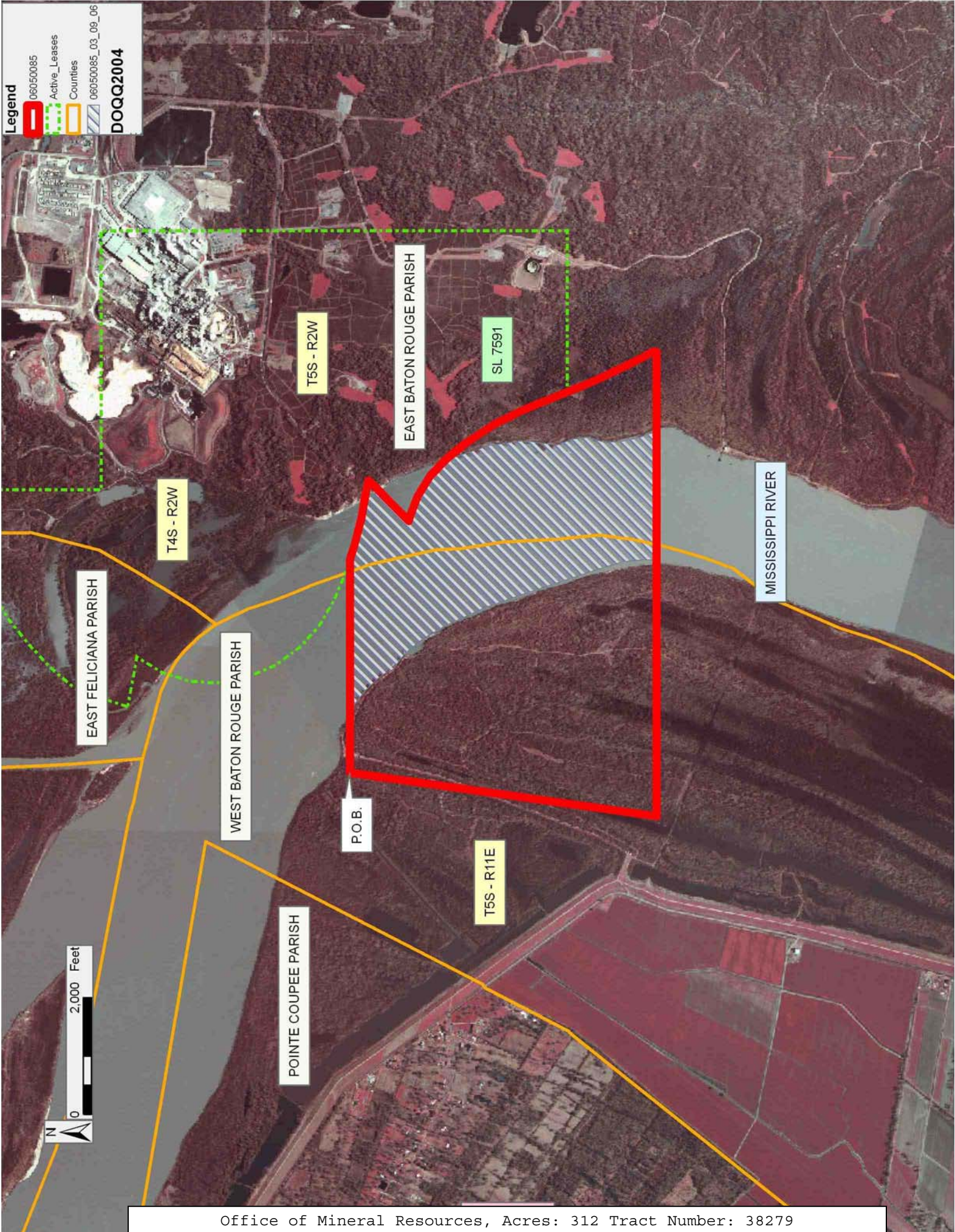
Applicant: THEOPHILUS OIL GAS & LAND SERVICES LLC

Bidder	Cash Payment	Price/Acre	Rental	Oil	Gas	Other

Legend

-  06050085
-  Active_Leases
-  Counties
-  06050085_03_09_06

DOQQ2004



TRACT 38280 - East Baton Rouge and West Baton Rouge Parishes, Louisiana

All of the lands now or formerly constituting the beds and bottoms of all water bodies of every nature and description the title of which vests in the State of Louisiana, together with all islands arising therein and other lands formed by accretion or by reliction, where allowed by law, excepting tax adjudicated lands, and not presently under mineral lease and cross hatched on May 10, 2006, situated in East Baton Rouge and West Baton Rouge Parishes, Louisiana, and more particularly described as follows: Beginning at a point having Coordinates of X = 2,010,621.41 and Y = 713,471.18; thence East 5,306.64 feet to a point having Coordinates of X = 2,015,928.05 and Y = 713,471.18; thence South 08 degrees 06 minutes 54 seconds West 4,718.43 feet to a point of intersection with the North boundary of State Lease No. 18824, having Coordinates of X = 2,015,261.99 and Y = 708,800.00; thence West 3,930.99 feet along said North boundary to its Northwest corner, having Coordinates of X = 2,011,331.00 and Y = 708,800.00; thence South 582.32 feet along the West boundary of said State Lease No. 18824, to a point having Coordinates of X = 2,011,331.00 and Y = 708,217.68; thence West 1,458.67 feet to a point having Coordinates of X = 2,009,872.33 and Y = 708,217.68; thence North 08 degrees 06 minutes 54 seconds East 5,306.64 feet to the point of beginning, containing approximately **237 acres**, all as more particularly outlined on a plat on file in the Office of Mineral Resources, Department of Natural Resources. All bearings, distances and coordinates are based on Louisiana Coordinate System of 1927, (North or South Zone), where applicable.

NOTE: The above description of the Tract nominated for lease has been provided and corrected, where required, exclusively by the nomination party. Any mineral lease selected from this Tract and awarded by the Louisiana State Mineral Board shall be without warranty of any kind, either express, implied, or statutory, including, but not limited to, the implied warranties of merchantability and fitness for a particular purpose. Should the mineral lease awarded by the Louisiana State Mineral Board be subsequently modified, cancelled or abrogated due to the existence of conflicting leases, operating agreements, private claims or other future obligations or conditions which may affect all or any portion of the leased Tract, it shall not relieve the Lessee of the obligation to pay any bonus due thereon to the Louisiana State Mineral Board, nor shall the Louisiana State Mineral Board be obligated to refund any consideration paid by the Lessor prior to such modification, cancellation, or abrogation, including, but not limited to, bonuses, rentals and royalties.

Applicant: THEOPHILUS OIL GAS & LAND SERVICES LLC

Bidder	Cash Payment	Price/Acre	Rental	Oil	Gas	Other

Legend

- 06050086
- Active_Leases
- Counties
- 06050086_03_09_06
- DOQQ2004**

EAST BATON ROUGE PARISH

T5S - R2W

MISSISSIPPI RIVER

SL 18824

WEST BATON ROUGE PARISH

P.O.B.

T5S - R11E



TRACT 38281 - East Baton Rouge and West Baton Rouge Parishes, Louisiana

All of the lands now or formerly constituting the beds and bottoms of all water bodies of every nature and description the title of which vests in the State of Louisiana, together with all islands arising therein and other lands formed by accretion or by reliction, where allowed by law, excepting tax adjudicated lands, and not presently under mineral lease and cross hatched on May 10, 2006, situated in East Baton Rouge and West Baton Rouge Parishes, Louisiana, and more particularly described as follows: Beginning at a point having Coordinates of X = 2,004,565.69 and Y = 708,217.68; thence East 5,306.63 feet to a point having Coordinates of X = 2,009,872.33 and Y = 708,217.68; thence South 08 degrees 06 minutes 54 seconds West 5,306.64 feet to a point having Coordinates of X = 2,009,123.24 and Y = 702,964.18; thence West 5,306.63 feet to a point having Coordinates of X = 2,003,816.61 and Y = 702,964.18; thence North 08 degrees 06 minutes 54 seconds East 5,306.64 feet to the point of beginning, containing approximately **77 acres**, all as more particularly outlined on a plat on file in the Office of Mineral Resources, Department of Natural Resources. All bearings, distances and coordinates are based on Louisiana Coordinate System of 1927, (North or South Zone), where applicable.

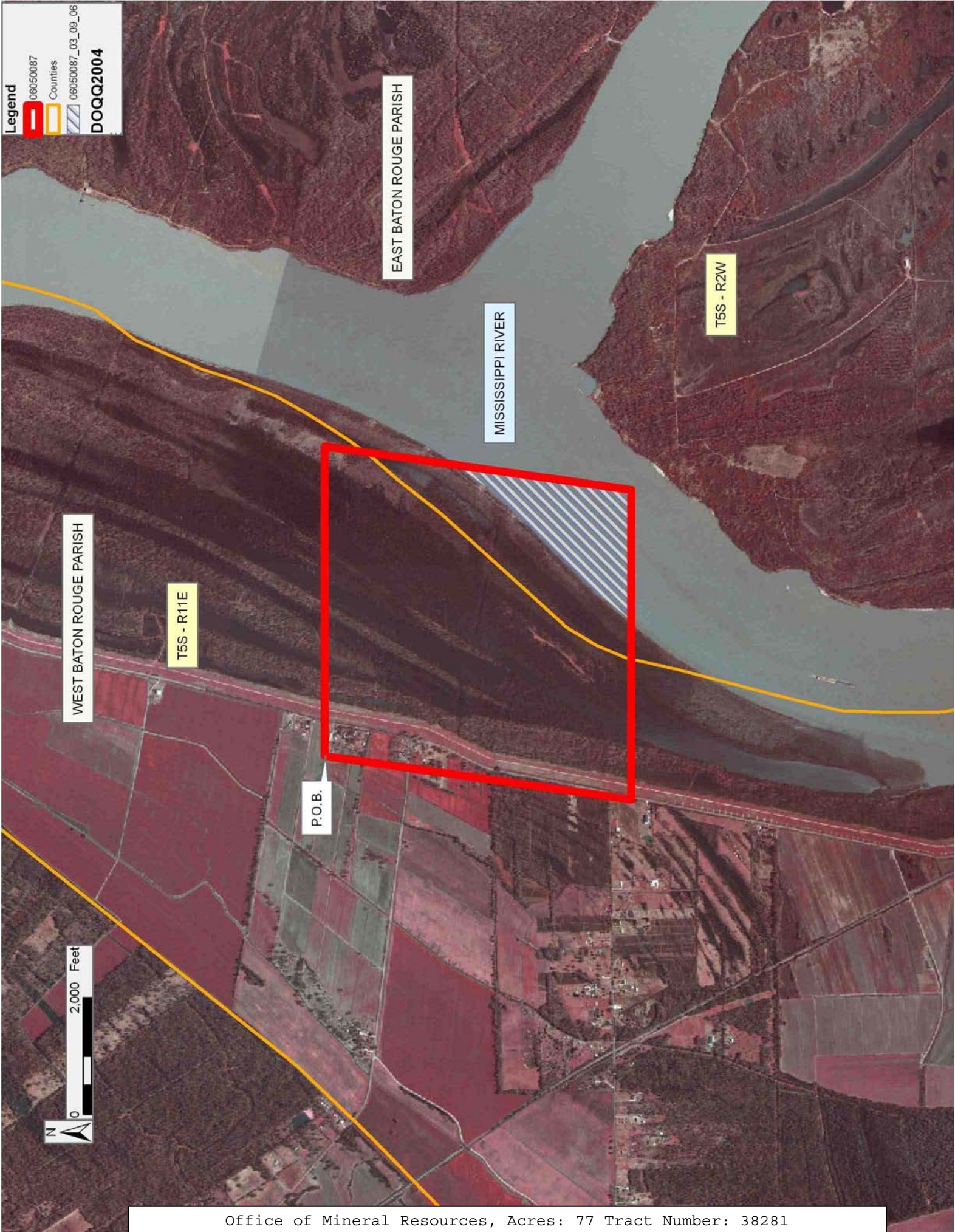
NOTE: The above description of the Tract nominated for lease has been provided and corrected, where required, exclusively by the nomination party. Any mineral lease selected from this Tract and awarded by the Louisiana State Mineral Board shall be without warranty of any kind, either express, implied, or statutory, including, but not limited to, the implied warranties of merchantability and fitness for a particular purpose. Should the mineral lease awarded by the Louisiana State Mineral Board be subsequently modified, cancelled or abrogated due to the existence of conflicting leases, operating agreements, private claims or other future obligations or conditions which may affect all or any portion of the leased Tract, it shall not relieve the Lessee of the obligation to pay any bonus due thereon to the Louisiana State Mineral Board, nor shall the Louisiana State Mineral Board be obligated to refund any consideration paid by the Lessor prior to such modification, cancellation, or abrogation, including, but not limited to, bonuses, rentals and royalties.

Bidder	Cash Payment	Price/Acre	Rental	Oil	Gas	Other

Applicant: THEOPHILUS OIL GAS & LAND SERVICES LLC

Legend

- 06050087
- Counties
- 06050087_03_09_06
- DOQQ2004**



TRACT 38282 - East Baton Rouge and West Baton Rouge Parishes, Louisiana

All of the lands now or formerly constituting the beds and bottoms of all water bodies of every nature and description the title of which vests in the State of Louisiana, together with all islands arising therein and other lands formed by accretion or by reliction, where allowed by law, excepting tax adjudicated lands, and not presently under mineral lease and cross hatched on May 10, 2006, situated in East Baton Rouge and West Baton Rouge Parishes, Louisiana, and more particularly described as follows: Beginning at a point having Coordinates of X = 2,009,872.33 and Y = 708,217.68; thence East 1,458.67 feet to point of intersection with the West boundary of State Lease No. 18824, having Coordinates of X = 2,011,331.00 and Y = 708,217.68; thence South 5,253.50 feet along said West boundary to a point having Coordinates of X = 2,011,331.00 and Y = 702,964.18; thence West 2,207.76 feet to a point having Coordinates of X = 2,009,123.24 and Y = 702,964.18; thence North 08 degrees 06 minutes 54 seconds East 5,306.64 feet to the point of beginning, containing approximately **179 acres**, all as more particularly outlined on a plat on file in the Office of Mineral Resources, Department of Natural Resources. All bearings, distances and coordinates are based on Louisiana Coordinate System of 1927, (North or South Zone), where applicable.

NOTE: The above description of the Tract nominated for lease has been provided and corrected, where required, exclusively by the nomination party. Any mineral lease selected from this Tract and awarded by the Louisiana State Mineral Board shall be without warranty of any kind, either express, implied, or statutory, including, but not limited to, the implied warranties of merchantability and fitness for a particular purpose. Should the mineral lease awarded by the Louisiana State Mineral Board be subsequently modified, cancelled or abrogated due to the existence of conflicting leases, operating agreements, private claims or other future obligations or conditions which may affect all or any portion of the leased Tract, it shall not relieve the Lessee of the obligation to pay any bonus due thereon to the Louisiana State Mineral Board, nor shall the Louisiana State Mineral Board be obligated to refund any consideration paid by the Lessor prior to such modification, cancellation, or abrogation, including, but not limited to, bonuses, rentals and royalties.

Bidder	Cash Payment	Price/Acre	Rental	Oil	Gas	Other

Applicant: THEOPHILUS OIL GAS & LAND SERVICES LLC

Legend

- 06050090
- Active_Leases
- Counties
- 06050090_03_09_06

DOQQ2004

EAST BATON ROUGE PARISH

PROFIT ISLAND CHUTE

SL 18824

T5S - R2W

WEST BATON ROUGE PARISH

P.O.B.

MISSISSIPPI RIVER

T5S - R11E



TRACT 38283 - East Baton Rouge Parish, Louisiana

All of the lands now or formerly constituting the beds and bottoms of all water bodies of every nature and description the title of which vests in the State of Louisiana, together with all islands arising therein and other lands formed by accretion or by reliction, where allowed by law, excepting tax adjudicated lands, and not presently under mineral lease and cross hatched on May 10, 2006, situated in East Baton Rouge Parish, Louisiana, and more particularly described as follows: Beginning at a point having Coordinates of X = 2,009,123.24 and Y = 702,964.18; thence East 2,207.76 feet to a point of intersection with the West boundary of State Lease No. 18824, having Coordinates of X = 2,011,331.00 and Y = 702,964.18; thence South 5,253.50 feet along said West boundary to a point having Coordinates of X = 2,011,331.00 and Y = 697,710.68; thence West 2,956.85 feet to a point having Coordinates of X = 2,008,374.15 and Y = 697,710.68; thence North 08 degrees 06 minutes 54 seconds East 5,306.64 feet to the point of beginning, containing approximately **8 acres**, all as more particularly outlined on a plat on file in the Office of Mineral Resources, Department of Natural Resources. All bearings, distances and coordinates are based on Louisiana Coordinate System of 1927, (North or South Zone), where applicable.

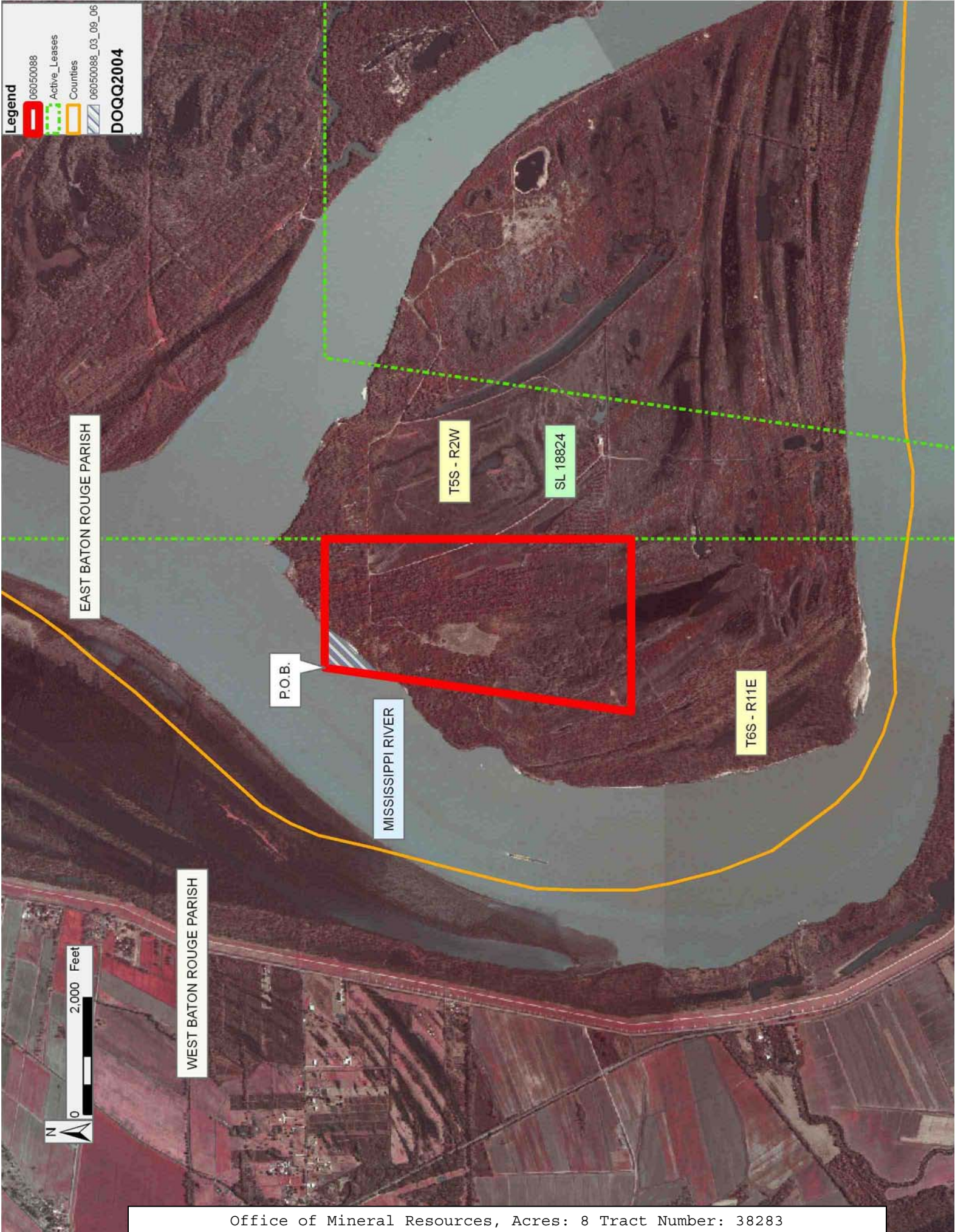
NOTE: The above description of the Tract nominated for lease has been provided and corrected, where required, exclusively by the nomination party. Any mineral lease selected from this Tract and awarded by the Louisiana State Mineral Board shall be without warranty of any kind, either express, implied, or statutory, including, but not limited to, the implied warranties of merchantability and fitness for a particular purpose. Should the mineral lease awarded by the Louisiana State Mineral Board be subsequently modified, cancelled or abrogated due to the existence of conflicting leases, operating agreements, private claims or other future obligations or conditions which may affect all or any portion of the leased Tract, it shall not relieve the Lessee of the obligation to pay any bonus due thereon to the Louisiana State Mineral Board, nor shall the Louisiana State Mineral Board be obligated to refund any consideration paid by the Lessor prior to such modification, cancellation, or abrogation, including, but not limited to, bonuses, rentals and royalties.

Bidder	Cash Payment	Price/Acre	Rental	Oil	Gas	Other

Applicant: THEOPHILUS OIL GAS & LAND SERVICES LLC

Legend

- 06050088
- Active_Leases
- Counties
- 06050088_03_09_06
- DOQQ2004



EAST BATON ROUGE PARISH

T5S - R2W

SL 18824

P.O.B.

MISSISSIPPI RIVER

T6S - R11E

WEST BATON ROUGE PARISH



TRACT 38284 - East Baton Rouge and West Baton Rouge Parishes, Louisiana

All of the lands now or formerly constituting the beds and bottoms of all water bodies of every nature and description the title of which vests in the State of Louisiana, together with all islands arising therein and other lands formed by accretion or by reliction, where allowed by law, excepting tax adjudicated lands, and not presently under mineral lease and cross hatched on May 10, 2006, situated in East Baton Rouge and West Baton Rouge Parishes, Louisiana, and more particularly described as follows: Beginning at a point having Coordinates of X = 2,003,816.61 and Y = 702,964.18; thence East 5,306.63 feet to a point having Coordinates of X = 2,009,123.24 and Y = 702,964.18; thence South 08 degrees 06 minutes 54 seconds West 5,306.64 feet to a point having Coordinates of X = 2,008,374.15 and Y = 697,710.68; thence West 5,306.63 feet to a point having Coordinates of X = 2,003,067.52 and Y = 697,710.68; thence North 08 degrees 06 minutes 54 seconds East 5,306.64 feet to the point of beginning, containing approximately **308 acres**, all as more particularly outlined on a plat on file in the Office of Mineral Resources, Department of Natural Resources. All bearings, distances and coordinates are based on Louisiana Coordinate System of 1927, (North or South Zone), where applicable.

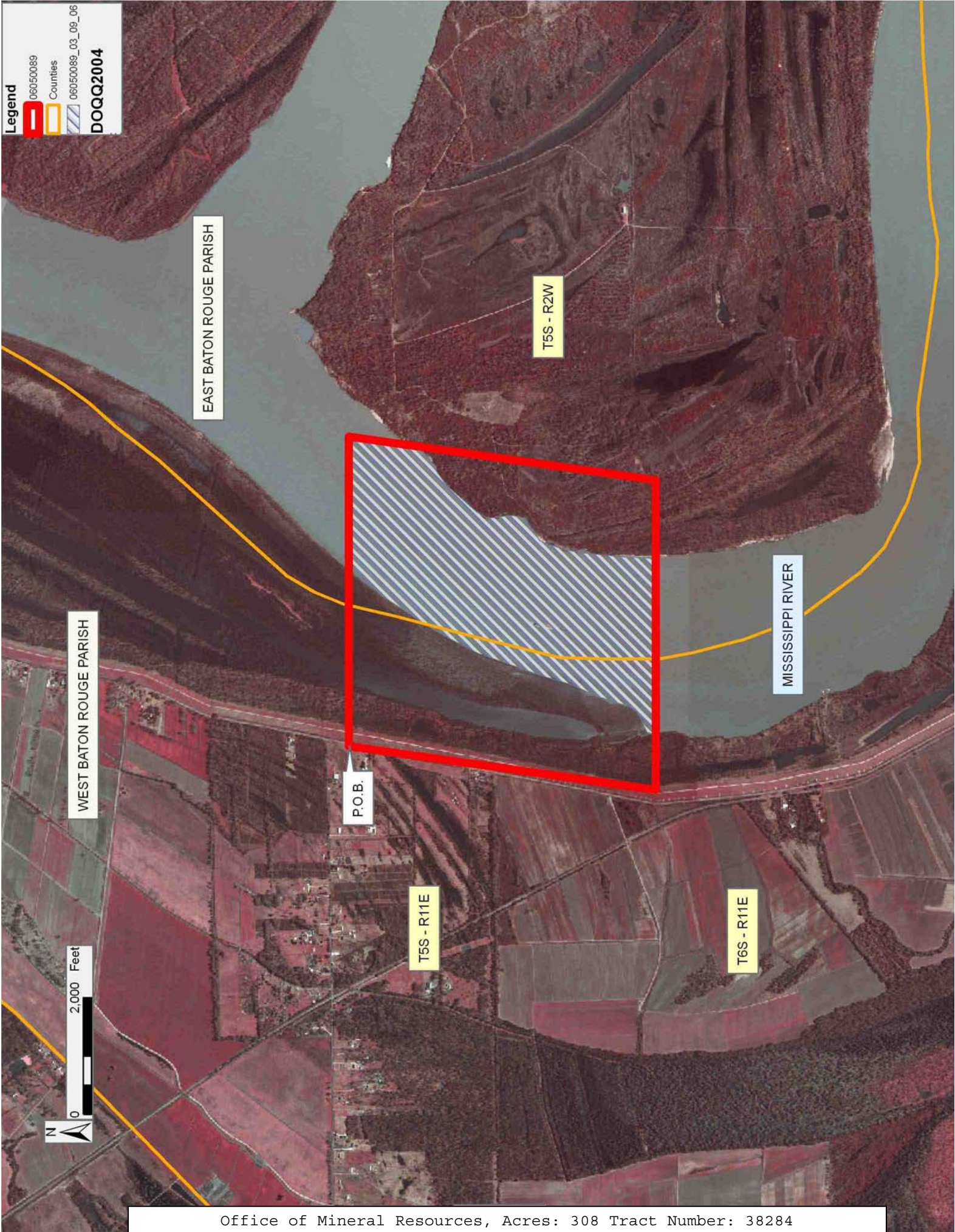
NOTE: The above description of the Tract nominated for lease has been provided and corrected, where required, exclusively by the nomination party. Any mineral lease selected from this Tract and awarded by the Louisiana State Mineral Board shall be without warranty of any kind, either express, implied, or statutory, including, but not limited to, the implied warranties of merchantability and fitness for a particular purpose. Should the mineral lease awarded by the Louisiana State Mineral Board be subsequently modified, cancelled or abrogated due to the existence of conflicting leases, operating agreements, private claims or other future obligations or conditions which may affect all or any portion of the leased Tract, it shall not relieve the Lessee of the obligation to pay any bonus due thereon to the Louisiana State Mineral Board, nor shall the Louisiana State Mineral Board be obligated to refund any consideration paid by the Lessor prior to such modification, cancellation, or abrogation, including, but not limited to, bonuses, rentals and royalties.

Bidder	Cash Payment	Price/Acre	Rental	Oil	Gas	Other

Applicant: THEOPHILUS OIL GAS & LAND SERVICES LLC

Legend

- 06050089
- Counties
- 06050089_03_09_06
- DOQQ2004**



TRACT 38285 - East Baton Rouge and West Baton Rouge Parishes, Louisiana

All of the lands now or formerly constituting the beds and bottoms of all water bodies of every nature and description the title of which vests in the State of Louisiana, together with all islands arising therein and other lands formed by accretion or by reliction, where allowed by law, excepting tax adjudicated lands, and not presently under mineral lease and cross hatched on May 10, 2006, situated in East Baton Rouge and West Baton Rouge Parishes, Louisiana, and more particularly described as follows: Beginning at a point having Coordinates of X = 2,008,374.15 and Y = 697,710.68; thence East 2,956.85 feet to a point of intersection with the West boundary of State Lease No. 18824, having Coordinates of X = 2,011,331.00 and Y = 697,710.68; thence South 5,253.49 feet along said West boundary to a point having Coordinates of X = 2,011,331.00 and Y = 692,457.19; thence West 3,705.93 feet to a point having Coordinates of X = 2,007,625.07 and Y = 692,457.19; thence North 08 degrees 06 minutes 54 seconds East 5,306.63 feet to the point of beginning, containing approximately **108 acres**, all as more particularly outlined on a plat on file in the Office of Mineral Resources, Department of Natural Resources. All bearings, distances and coordinates are based on Louisiana Coordinate System of 1927, (North or South Zone), where applicable.

NOTE: The above description of the Tract nominated for lease has been provided and corrected, where required, exclusively by the nomination party. Any mineral lease selected from this Tract and awarded by the Louisiana State Mineral Board shall be without warranty of any kind, either express, implied, or statutory, including, but not limited to, the implied warranties of merchantability and fitness for a particular purpose. Should the mineral lease awarded by the Louisiana State Mineral Board be subsequently modified, cancelled or abrogated due to the existence of conflicting leases, operating agreements, private claims or other future obligations or conditions which may affect all or any portion of the leased Tract, it shall not relieve the Lessee of the obligation to pay any bonus due thereon to the Louisiana State Mineral Board, nor shall the Louisiana State Mineral Board be obligated to refund any consideration paid by the Lessor prior to such modification, cancellation, or abrogation, including, but not limited to, bonuses, rentals and royalties.

Bidder	Cash Payment	Price/Acre	Rental	Oil	Gas	Other

Applicant: THEOPHILUS OIL GAS & LAND SERVICES LLC

Legend

- 06050092
- Active_Leases
- Counties
- 06050092_03_09_06
- DOQQ2004**

