

TRACT 37377 - Terrebonne Parish, Louisiana

All of the lands now or formerly constituting the beds and bottoms of all water bodies of every nature and description the title of which vests in the State of Louisiana, together with all islands arising therein and other lands formed by accretion or by reliction, where allowed by law, excepting tax adjudicated lands, and not presently under mineral lease on May 11, 2005, situated in Terrebonne Parish, Louisiana, and more particularly described as follows: Beginning at a point having Coordinates of X = 2,167,294.53 and Y = 253,782.23; Thence South 10,565.31 feet to a point having Coordinates of X = 2,167,294.53 and Y = 243,216.92; Thence West 10,822.41 feet to a point having Coordinates of X = 2,156,472.12 and Y = 243,216.92; Thence North 2,516.06 feet to a point having Coordinates of X = 2,156,472.12 and Y = 245,732.98; Thence East 180.50 feet to a point having Coordinates of X = 2,156,652.62 and Y = 245,732.98; Thence North 8,043.31 feet to a point having Coordinates of X = 2,156,652.62 and Y = 253,776.29; Thence North 89 degrees 58 minutes 05 seconds East 5,944.15 feet to the Southwest Corner of State Lease No. 17940, as amended, having Coordinates of X = 2,162,596.88 and Y = 253,779.61; Thence North 89 degrees 58 Minutes 05 seconds East 3,437.93 feet along the South Boundary of said State Lease No. 17940 to its Southeast corner having Coordinates of X = 2,166,034.81 and Y = 253,781.53; Thence North 89 degrees 58 Minutes 05 seconds East 1,259.72 feet to the point of beginning, containing approximately **40 acres**, all as more particularly outlined on a plat on file in the Office of Mineral Resources, Department of Natural Resources. All bearings, distances and coordinates are based on Louisiana Coordinate System of 1927, (North or South Zone), where applicable.

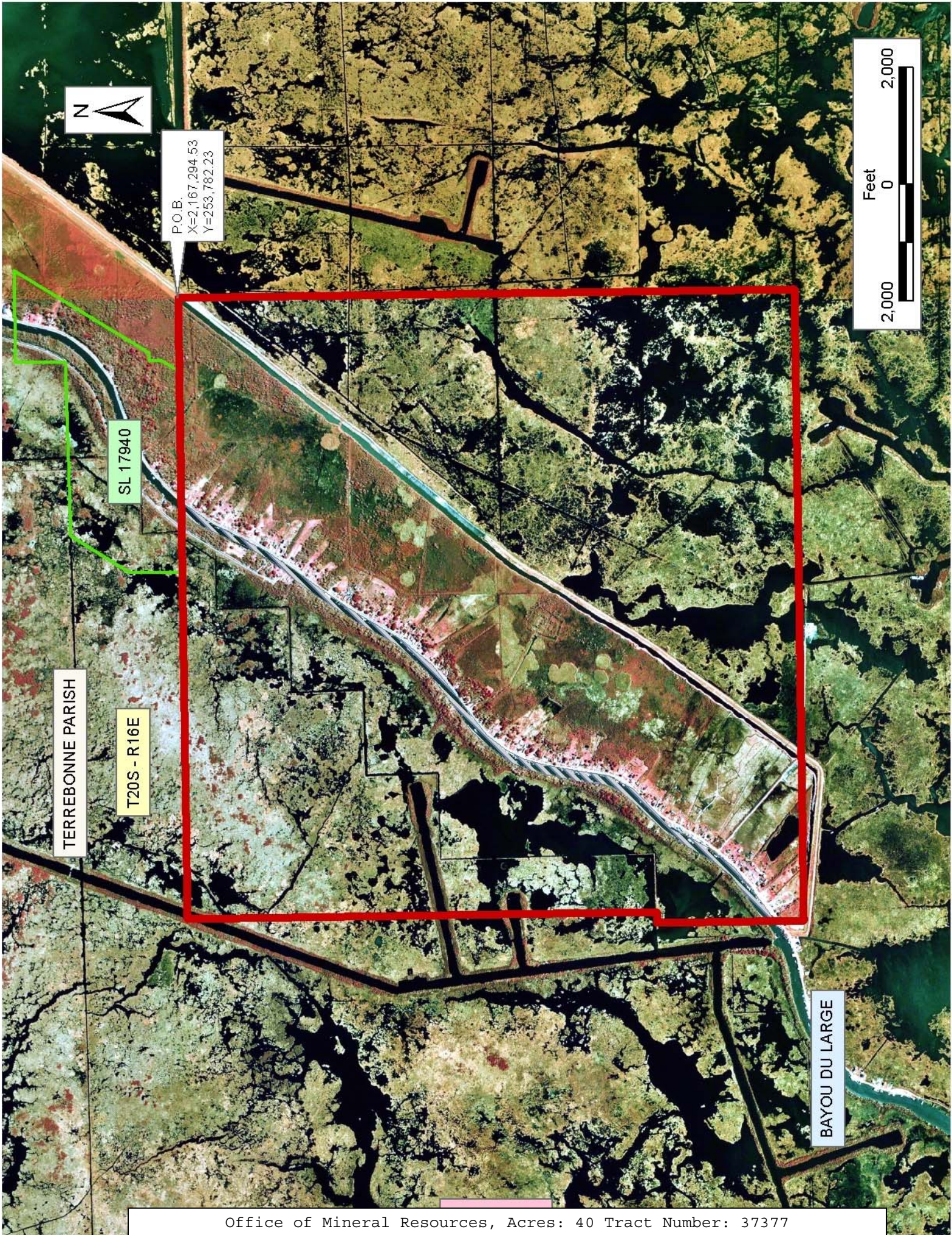
NOTE: The above description of the Tract nominated for lease has been provided and corrected, where required, exclusively by the nomination party. Any mineral lease selected from this Tract and awarded by the Louisiana State Mineral Board shall be without warranty of any kind, either express, implied, or statutory, including, but not limited to, the implied warranties of merchantability and fitness for a particular purpose. Should the mineral lease awarded by the Louisiana State Mineral Board be subsequently modified, cancelled or abrogated due to the existence of conflicting leases, operating agreements, private claims or other future obligations or conditions which may affect all or any portion of the leased Tract, it shall not relieve the Lessee of the obligation to pay any bonus due thereon to the Louisiana State Mineral Board, nor shall the Louisiana State Mineral Board be obligated to refund any consideration paid by the Lessor prior to such modification, cancellation, or abrogation, including, but not limited to, bonuses, rentals and royalties.

NOTE: The State of Louisiana does hereby reserve, and this lease shall be subject to, the imprescriptible right of surface use in the nature of a servitude in favor of the Department of Natural Resources, including its Offices and Commissions, for the sole purpose of implementing, constructing, servicing and maintaining approved coastal zone management and/or restoration projects. Utilization of any and all rights derived

under this lease by the mineral lessee, its agents, successors or assigns, shall not interfere with nor hinder the reasonable surface use by the Department of Natural Resources, its Offices or Commissions, as herein above reserved.

Applicant: Dara Doty

Bidder	Cash Payment	Price/Acre	Rental	Oil	Gas	Other



P.O.B.
X=2,167,294.53
Y=253,782.23



SL 17940

TERREBONNE PARISH

T20S - R16E

BAYOU DU LARGE

TRACT 37378 - Terrebonne Parish, Louisiana

All of the lands now or formerly constituting the beds and bottoms of all water bodies of every nature and description the title of which vests in the State of Louisiana, together with all islands arising therein and other lands formed by accretion or by reliction, where allowed by law, excepting tax adjudicated lands, and not presently under mineral lease on May 11, 2005, situated in Terrebonne Parish, Louisiana, and more particularly described as follows: Beginning at a point having Coordinates of X = 2,218,314.00 and Y = 252,740.81; thence South 2,815.81 feet to a point having Coordinates of X = 2,218,314.00 and Y = 249,925.00; thence West 1,032.80 feet to the Northeast corner of State Lease No. 17895 having Coordinates of X = 2,217,281.20 and Y = 249,925.00; thence along the boundary of said State Lease No. 17895 the following courses: West 3,481.36 feet and South 127.47 feet to the Northeast corner of State Lease No. 18268 having Coordinates of X = 2,213,799.84 and Y = 249,797.53; thence along the boundary of said State Lease No. 18268 the following courses: South 88 degrees 38 minutes 19 seconds West 2,000.40 feet, South 51 degrees 25 minutes 44 seconds West 2,020.89 feet, South 54 degrees 27 minutes 44 seconds West 258.07 feet, North 66 degrees 32 minutes 28 seconds West 1,733.26 feet, North 72 degrees 38 minutes 46 seconds West 167.63 feet, and South 64 degrees 29 minutes 35 seconds West 1,379.98 feet to a point having Coordinates of X = 2,207,014.52 and Y = 248,485.75; thence North 4,255.06 feet to a point having Coordinates of X = 2,207,014.52 and Y = 252,740.81; thence East 11,299.48 feet to the point of beginning, containing approximately **505 acres**, all as more particularly outlined on a plat on file in the Office of Mineral Resources, Department of Natural Resources. All bearings, distances and coordinates are based on Louisiana Coordinate System of 1927, (North or South Zone), where applicable.

NOTE: The above description of the Tract nominated for lease has been provided and corrected, where required, exclusively by the nomination party. Any mineral lease selected from this Tract and awarded by the Louisiana State Mineral Board shall be without warranty of any kind, either express, implied, or statutory, including, but not limited to, the implied warranties of merchantability and fitness for a particular purpose. Should the mineral lease awarded by the Louisiana State Mineral Board be subsequently modified, cancelled or abrogated due to the existence of conflicting leases, operating agreements, private claims or other future obligations or conditions which may affect all or any portion of the leased Tract, it shall not relieve the Lessee of the obligation to pay any bonus due thereon to the Louisiana State Mineral Board, nor shall the Louisiana State Mineral Board be obligated to refund any consideration paid by the Lessor prior to such modification, cancellation, or abrogation, including, but not limited to, bonuses, rentals and royalties.

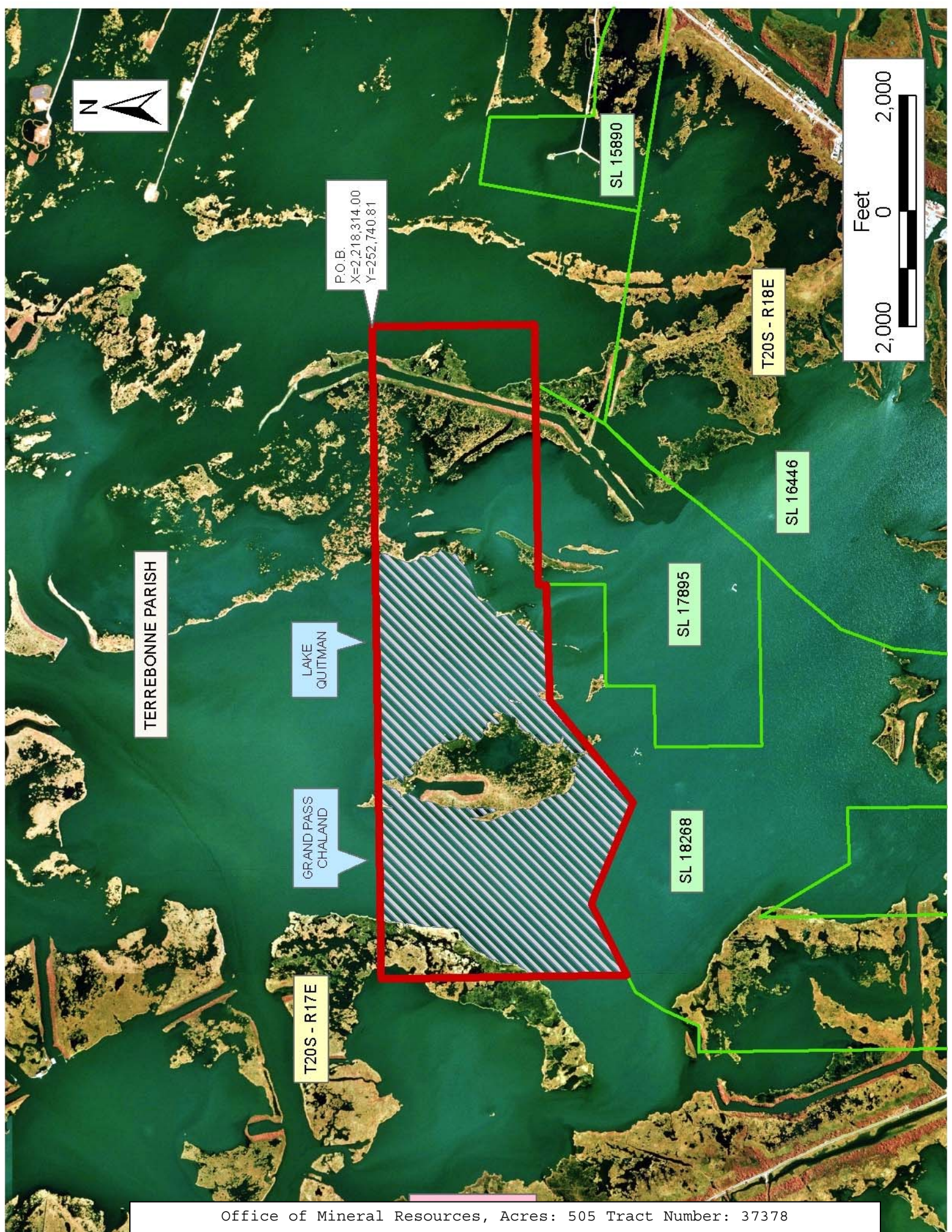
NOTE: The State of Louisiana does hereby reserve, and this lease shall be subject to, the imprescriptible right of surface use in the nature of a servitude in favor of the Department of Natural Resources, including its

Offices and Commissions, for the sole purpose of implementing, constructing, servicing and maintaining approved coastal zone management and/or restoration projects. Utilization of any and all rights derived under this lease by the mineral lessee, its agents, successors or assigns, shall not interfere with nor hinder the reasonable surface use by the Department of Natural Resources, its Offices or Commissions, as herein above reserved.

NOTE: The Department of Wildlife and Fisheries has designated certain areas in the coastal waters of the State of Louisiana as Oyster Seed Bed Areas. The exact location of those Seed Bed Areas must be obtained from the Department of Wildlife and Fisheries and any work done under a mineral lease from the State of Louisiana may necessarily be conducted in conformity with the rules and regulations promulgated by the said Department of Wildlife and Fisheries for Oyster Seed Bed Areas.

Applicant: Gray Fox Resources

Bidder	Cash Payment	Price/Acre	Rental	Oil	Gas	Other



TERREBONNE PARISH

LAKE QUITMAN

GRAND PASS CHALAND

P.O.B.
X=2,218,314.00
Y=252,740.81

T20S - R17E

T20S - R18E

SL 15890

SL 17895

SL 16446

SL 18268



TRACT 37379 - Portion of Block 3, Grand Isle Area, Jefferson and Plaquemines Parishes, Louisiana

All of the lands now or formerly constituting the beds and bottoms of all water bodies of every nature and description the title of which vests in the State of Louisiana, together with all islands arising therein and other lands formed by accretion or by reliction, where allowed by law, excepting tax adjudicated lands, and not presently under mineral lease on May 11, 2005, situated in Jefferson and Plaquemines Parishes, Louisiana, and more particularly described as follows: Beginning at the Northeast Corner of Block 3, Grand Isle Area, having Coordinates of X = 2,457,659.89 and Y = 229,809.51; Thence South 7,379.02 feet along the East Boundary of said Block 3 to a point having Coordinates of X = 2,457,659.89 and Y = 222,430.49; Thence West 14,758.04 feet to a point on the West Boundary of said Block 3 or a projection thereof having Coordinates of X = 2,442,901.85 and Y = 222,430.49; Thence North 559.77 feet to a point having Coordinates of X = 2,442,901.85 and Y = 222,990.26; Thence North 57 degrees 41 minutes 14 seconds East 12,757.19 feet to a point on the North line of said Block 3, or a projection thereof having Coordinates of X = 2,453,683.49 and Y = 229,809.51; Thence East 3,976.40 feet along on the North line or said Block 3, or a projection thereof to the point of beginning containing approximately **1,543 acres**, all as more particularly outlined on a plat on file in the Office of Mineral Resources, Department of Natural Resources. All bearings, distances and coordinates are based on Louisiana Coordinate System of 1927, (North or South Zone), where applicable.

NOTE: The above description of the Tract nominated for lease has been provided and corrected, where required, exclusively by the nomination party. Any mineral lease selected from this Tract and awarded by the Louisiana State Mineral Board shall be without warranty of any kind, either express, implied, or statutory, including, but not limited to, the implied warranties of merchantability and fitness for a particular purpose. Should the mineral lease awarded by the Louisiana State Mineral Board be subsequently modified, cancelled or abrogated due to the existence of conflicting leases, operating agreements, private claims or other future obligations or conditions which may affect all or any portion of the leased Tract, it shall not relieve the Lessee of the obligation to pay any bonus due thereon to the Louisiana State Mineral Board, nor shall the Louisiana State Mineral Board be obligated to refund any consideration paid by the Lessor prior to such modification, cancellation, or abrogation, including, but not limited to, bonuses, rentals and royalties.

NOTE: The State of Louisiana does hereby reserve, and this lease shall be subject to, the imprescriptible right of surface use in the nature of a servitude in favor of the Department of Natural Resources, including its Offices and Commissions, for the sole purpose of implementing, constructing, servicing and maintaining approved coastal zone management and/or restoration projects. Utilization of any and all rights derived under this lease by the mineral lessee, its agents, successors or assigns,

shall not interfere with nor hinder the reasonable surface use by the Department of Natural Resources, its Offices or Commissions, as herein above reserved.

NOTE: It appears, according to our records, that a portion of this Tract is located within the restrictive safety fairway area as set out by the Corps of Engineers, U.S. Army and/or the restrictive anchorage area as set out by the U.S. Coast Guard.

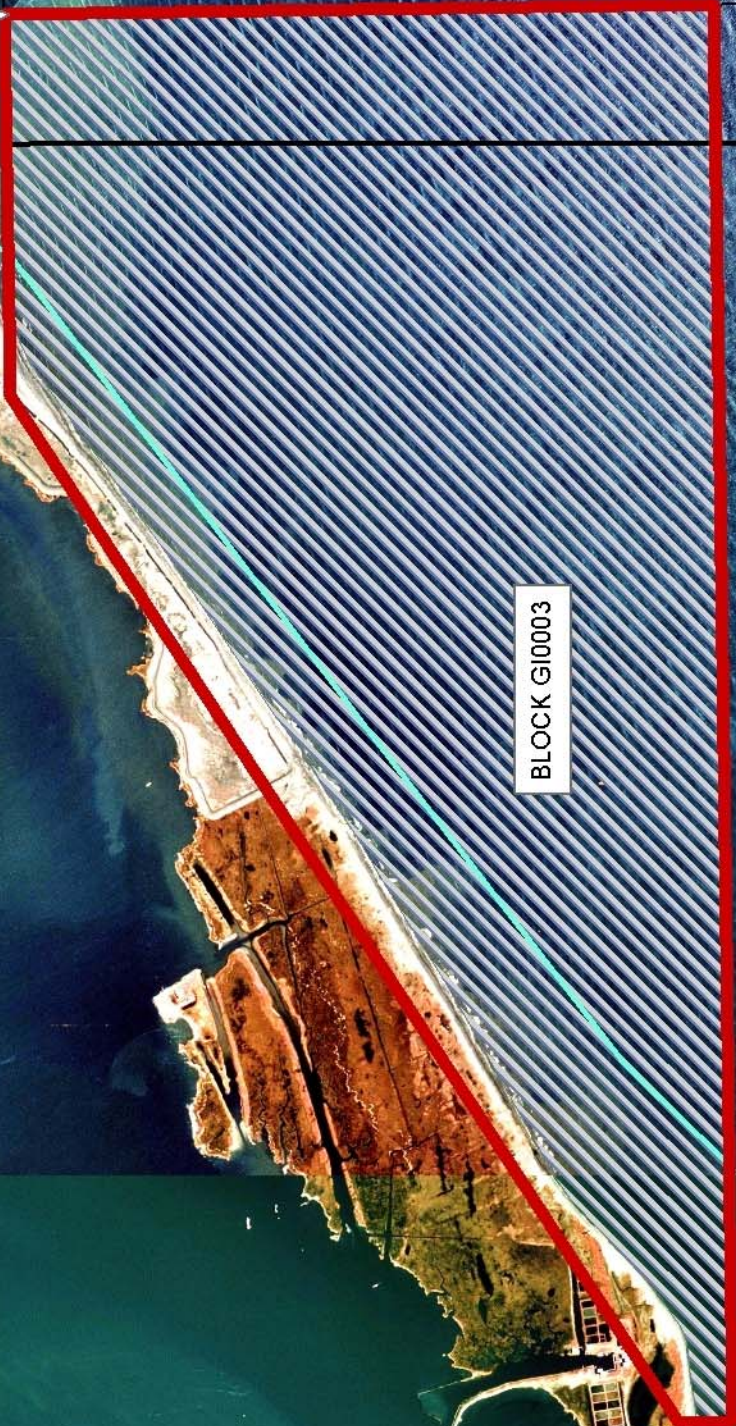
NOTE: The Department of Wildlife and Fisheries has designated certain areas in the coastal waters of the State of Louisiana as Oyster Seed Bed Areas. The exact location of those Seed Bed Areas must be obtained from the Department of Wildlife and Fisheries and any work done under a mineral lease from the State of Louisiana may necessarily be conducted in conformity with the rules and regulations promulgated by the said Department of Wildlife and Fisheries for Oyster Seed Bed Areas.

Applicant: Energy Partners, Inc.

Bidder	Cash Payment	Price/Acre	Rental	Oil	Gas	Other



P.O.B.
X=2,457,659.89
Y=229,809.51



BLOCK G10003

GRAND ISLE AREA

JEFFERSON PARISH

PLAQUEMINES PARISH



TRACT 37380 - Portion of Block 2, Grand Isle Area, Plaquemines Parish, Louisiana

All of the lands now or formerly constituting the beds and bottoms of all water bodies of every nature and description the title of which vests in the State of Louisiana, together with all islands arising therein and other lands formed by accretion or by reliction, where allowed by law, excepting tax adjudicated lands, and not presently under mineral lease on May 11, 2005, situated in Plaquemines Parish, Louisiana, and more particularly described as follows: Beginning at a point on the East Boundary Line of Block 2, Grand Isle Area, having Coordinates of X = 2,472,417.93 and Y = 222,430.49; Thence West 14,758.04 feet to a point on the West Boundary of said Block 2 having Coordinates of X = 2,457,659.89 and Y = 222,430.49; Thence North 7,379.02 feet along the West Boundary of said Block 2 to its Northwest Corner having Coordinates of X = 2,457,659.89 and Y = 229,809.51; Thence East 14,758.04 feet along the North Boundary of said Block 2 to its Northeast Corner having Coordinates of X = 2,472,417.93 and Y = 229,809.51; Thence South 7,379.02 feet along the East Boundary of said Block 2 to the point of beginning containing approximately **2,500.00 acres**, all as more particularly outlined on a plat on file in the Office of Mineral Resources, Department of Natural Resources. All bearings, distances and coordinates are based on Louisiana Coordinate System of 1927, (North or South Zone), where applicable.

NOTE: The above description of the Tract nominated for lease has been provided and corrected, where required, exclusively by the nomination party. Any mineral lease selected from this Tract and awarded by the Louisiana State Mineral Board shall be without warranty of any kind, either express, implied, or statutory, including, but not limited to, the implied warranties of merchantability and fitness for a particular purpose. Should the mineral lease awarded by the Louisiana State Mineral Board be subsequently modified, cancelled or abrogated due to the existence of conflicting leases, operating agreements, private claims or other future obligations or conditions which may affect all or any portion of the leased Tract, it shall not relieve the Lessee of the obligation to pay any bonus due thereon to the Louisiana State Mineral Board, nor shall the Louisiana State Mineral Board be obligated to refund any consideration paid by the Lessor prior to such modification, cancellation, or abrogation, including, but not limited to, bonuses, rentals and royalties.

NOTE: The State of Louisiana does hereby reserve, and this lease shall be subject to, the imprescriptible right of surface use in the nature of a servitude in favor of the Department of Natural Resources, including its Offices and Commissions, for the sole purpose of implementing, constructing, servicing and maintaining approved coastal zone management and/or restoration projects. Utilization of any and all rights derived under this lease by the mineral lessee, its agents, successors or assigns, shall not interfere with nor hinder the reasonable surface use by the Department of Natural Resources, its Offices or Commissions, as herein above reserved.

NOTE: The Department of Wildlife and Fisheries has designated certain areas in the coastal waters of the State of Louisiana as Oyster Seed Bed Areas. The exact location of those Seed Bed Areas must be obtained from the Department of Wildlife and Fisheries and any work done under a mineral lease from the State of Louisiana may necessarily be conducted in conformity with the rules and regulations promulgated by the said Department of Wildlife and Fisheries for Oyster Seed Bed Areas.

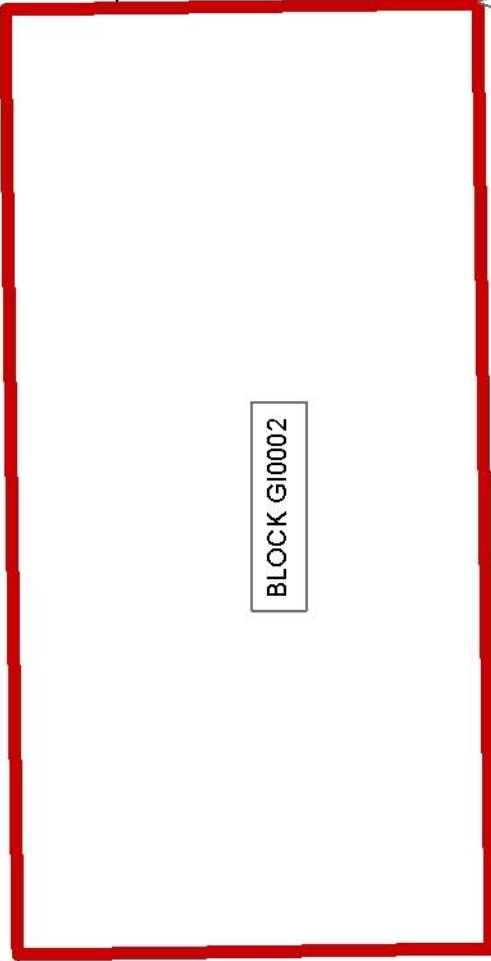
Applicant: Energy Partners, Inc.

Bidder	Cash Payment	Price/Acre	Rental	Oil	Gas	Other



WEST DELTA AREA

GRAND ISLE AREA

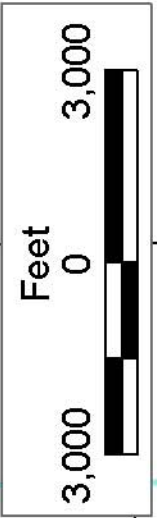


BLOCK G10002

P.O.B.
X=2,472,417.93
Y=222,430.49

PLAQUEMINES PARISH

JEFFERSON
PARISH



TRACT 37381 - Portion of Block 4, Grand Isle Area, Jefferson Parish, Louisiana

All of the lands now or formerly constituting the beds and bottoms of all water bodies of every nature and description the title of which vests in the State of Louisiana, together with all islands arising therein and other lands formed by accretion or by reliction, where allowed by law, excepting tax adjudicated lands, and not presently under mineral lease on May 11, 2005, situated in Jefferson Parish, Louisiana, and more particularly described as follows: Beginning at the Southeast Corner of Block 4, Grand Isle Area having Coordinates of X = 2,442,901.85 and Y = 215,051.47; Thence West 5,503.09 feet along the South Boundary of said Block 4 to a point having Coordinates of X = 2,437,398.76 and Y = 215,051.47; Thence Northeasterly in a straight line to a point having Coordinates of X = 2,437,945.00 and Y = 215,568.00; Northeasterly on a straight line to a point having Coordinates of X = 2,438,898 and Y = 217,128; Thence Northeasterly on a straight line to a point having Coordinates of X = 2,440,613 and Y = 220,941; Thence North 20 degrees 06 minutes 20 seconds East 2,182.24 feet to a point having Coordinates of X = 2,441,363.15 and Y = 222,990.26; Thence East 1,538.70 feet to a point having Coordinates of X = 2,442,901.85 and Y = 222,990.26; Thence South 7,938.79 feet along the East Boundary of said Block 4 to the point of beginning containing approximately **371 acres**, all as more particularly outlined on a plat on file in the Office of Mineral Resources, Department of Natural Resources. All bearings, distances and coordinates are based on Louisiana Coordinate System of 1927, (North or South Zone), where applicable.

NOTE: The above description of the Tract nominated for lease has been provided and corrected, where required, exclusively by the nomination party. Any mineral lease selected from this Tract and awarded by the Louisiana State Mineral Board shall be without warranty of any kind, either express, implied, or statutory, including, but not limited to, the implied warranties of merchantability and fitness for a particular purpose. Should the mineral lease awarded by the Louisiana State Mineral Board be subsequently modified, cancelled or abrogated due to the existence of conflicting leases, operating agreements, private claims or other future obligations or conditions which may affect all or any portion of the leased Tract, it shall not relieve the Lessee of the obligation to pay any bonus due thereon to the Louisiana State Mineral Board, nor shall the Louisiana State Mineral Board be obligated to refund any consideration paid by the Lessor prior to such modification, cancellation, or abrogation, including, but not limited to, bonuses, rentals and royalties.

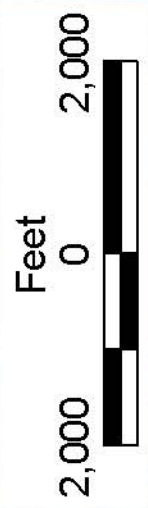
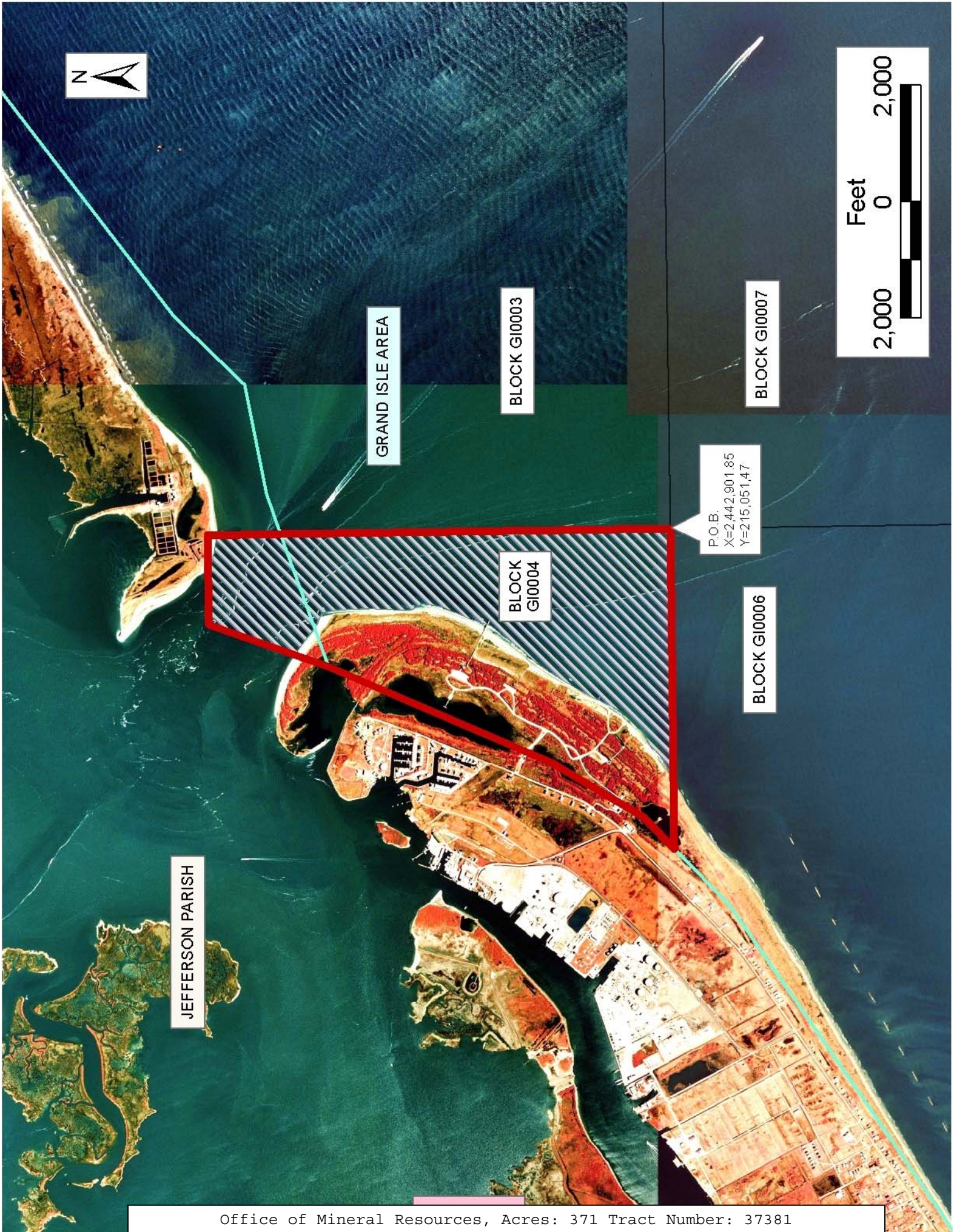
NOTE: The State of Louisiana does hereby reserve, and this lease shall be subject to, the imprescriptible right of surface use in the nature of a servitude in favor of the Department of Natural Resources, including its Offices and Commissions, for the sole purpose of implementing, constructing, servicing and maintaining approved coastal zone management and/or restoration projects. Utilization of any and all rights derived

under this lease by the mineral lessee, its agents, successors or assigns, shall not interfere with nor hinder the reasonable surface use by the Department of Natural Resources, its Offices or Commissions, as herein above reserved.

NOTE: The Department of Wildlife and Fisheries has designated certain areas in the coastal waters of the State of Louisiana as Oyster Seed Bed Areas. The exact location of those Seed Bed Areas must be obtained from the Department of Wildlife and Fisheries and any work done under a mineral lease from the State of Louisiana may necessarily be conducted in conformity with the rules and regulations promulgated by the said Department of Wildlife and Fisheries for Oyster Seed Bed Areas.

Applicant: Energy Partners, Inc.

Bidder	Cash Payment	Price/Acre	Rental	Oil	Gas	Other



GRAND ISLE AREA

BLOCK GI0003

BLOCK GI0007

P.O.B.
X=2,442,901.85
Y=2,115,051.47

BLOCK GI0004

BLOCK GI0006

JEFFERSON PARISH

TRACT 37382 - Portion of Block 2, Grand Isle Area, Plaquemines Parish, Louisiana

All of the lands now or formerly constituting the beds and bottoms of all water bodies of every nature and description the title of which vests in the State of Louisiana, together with all islands arising therein and other lands formed by accretion or by reliction, where allowed by law, excepting tax adjudicated lands, and not presently under mineral lease on May 11, 2005, situated in Plaquemines Parish, Louisiana, and more particularly described as follows: Beginning at the Southeast Corner of Block 2, Grand Isle Area, having Coordinates of X = 2,472,417.93 and Y = 215,051.47; Thence West 14,758.04 feet along the South Boundary of said Block 2 to its Southwest Corner having Coordinates of X = 2,457,659.89 and Y = 215,051.47; Thence North 7,379.02 feet along the West Boundary of said Block 2 to a point having Coordinates of X = 2,457,659.89 and Y = 222,430.49; Thence East 14,758.04 feet to a point on the East Boundary of said Block 2 having Coordinates of X = 2,472,417.93 and Y = 222,430.49; Thence South 7,379.02 feet along the East Boundary of said Block 2 to the point of beginning containing approximately **2,500.00 acres**, all as more particularly outlined on a plat on file in the Office of Mineral Resources, Department of Natural Resources. All bearings, distances and coordinates are based on Louisiana Coordinate System of 1927, (North or South Zone), where applicable.

NOTE: The above description of the Tract nominated for lease has been provided and corrected, where required, exclusively by the nomination party. Any mineral lease selected from this Tract and awarded by the Louisiana State Mineral Board shall be without warranty of any kind, either express, implied, or statutory, including, but not limited to, the implied warranties of merchantability and fitness for a particular purpose. Should the mineral lease awarded by the Louisiana State Mineral Board be subsequently modified, cancelled or abrogated due to the existence of conflicting leases, operating agreements, private claims or other future obligations or conditions which may affect all or any portion of the leased Tract, it shall not relieve the Lessee of the obligation to pay any bonus due thereon to the Louisiana State Mineral Board, nor shall the Louisiana State Mineral Board be obligated to refund any consideration paid by the Lessor prior to such modification, cancellation, or abrogation, including, but not limited to, bonuses, rentals and royalties.

NOTE: The State of Louisiana does hereby reserve, and this lease shall be subject to, the imprescriptible right of surface use in the nature of a servitude in favor of the Department of Natural Resources, including its Offices and Commissions, for the sole purpose of implementing, constructing, servicing and maintaining approved coastal zone management and/or restoration projects. Utilization of any and all rights derived under this lease by the mineral lessee, its agents, successors or assigns, shall not interfere with nor hinder the reasonable surface use by the Department of Natural Resources, its Offices or Commissions, as herein above reserved.

NOTE: It appears, according to our records, that a portion of this Tract is located within the restrictive safety fairway area as set out by the Corps of Engineers, U.S. Army and/or the restrictive anchorage area as set out by the U.S. Coast Guard.

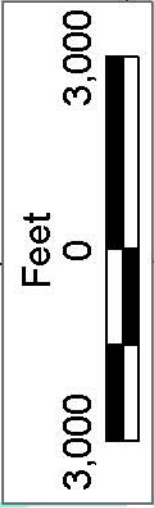
Applicant: Energy Partners, Inc.

Bidder	Cash Payment	Price/Acre	Rental	Oil	Gas	Other



WEST DELTA AREA

BLOCK WD0013



P.O.B.
X=2,472,417.93
Y=2,15,051.47

GRAND ISLE AREA

BLOCK G10002

BLOCK G10008

PLAQUEMINES PARISH

JEFFERSON
PARISH

TRACT 37383 - Portion of Block 3, Grand Isle Area, Jefferson and Plaquemines Parishes, Louisiana

All of the lands now or formerly constituting the beds and bottoms of all water bodies of every nature and description the title of which vests in the State of Louisiana, together with all islands arising therein and other lands formed by accretion or by reliction, where allowed by law, excepting tax adjudicated lands, and not presently under mineral lease on May 11, 2005, situated in Jefferson and Plaquemines Parishes, Louisiana, and more particularly described as follows: Beginning at a point on the East Boundary of Block 3, Grand Isle Area, having Coordinates of X = 2,457,659.89 and Y = 222,430.49; Thence South 7,379.02 feet along the East Boundary of said Block 3 to its Southeast Corner having Coordinates of X = 2,457,659.89 and Y = 215,051.47; Thence West 14,758.04 feet along the South Boundary of said Block 3 to its Southwest Corner having Coordinates of X = 2,442,901.85 and Y = 215,051.47; Thence North 7,379.02 feet along the West line of said Block 3 or a projection thereof to a point having Coordinates of X = 2,442,901.85 and Y = 222,430.49; Thence East 14,758.04 feet to the point of beginning containing approximately **2,500 acres**, all as more particularly outlined on a plat on file in the Office of Mineral Resources, Department of Natural Resources. All bearings, distances and coordinates are based on Louisiana Coordinate System of 1927, (North or South Zone), where applicable.

NOTE: The above description of the Tract nominated for lease has been provided and corrected, where required, exclusively by the nomination party. Any mineral lease selected from this Tract and awarded by the Louisiana State Mineral Board shall be without warranty of any kind, either express, implied, or statutory, including, but not limited to, the implied warranties of merchantability and fitness for a particular purpose. Should the mineral lease awarded by the Louisiana State Mineral Board be subsequently modified, cancelled or abrogated due to the existence of conflicting leases, operating agreements, private claims or other future obligations or conditions which may affect all or any portion of the leased Tract, it shall not relieve the Lessee of the obligation to pay any bonus due thereon to the Louisiana State Mineral Board, nor shall the Louisiana State Mineral Board be obligated to refund any consideration paid by the Lessor prior to such modification, cancellation, or abrogation, including, but not limited to, bonuses, rentals and royalties.

NOTE: The State of Louisiana does hereby reserve, and this lease shall be subject to, the imprescriptible right of surface use in the nature of a servitude in favor of the Department of Natural Resources, including its Offices and Commissions, for the sole purpose of implementing, constructing, servicing and maintaining approved coastal zone management and/or restoration projects. Utilization of any and all rights derived under this lease by the mineral lessee, its agents, successors or assigns, shall not interfere with nor hinder the reasonable surface use by the Department of Natural Resources, its Offices or Commissions, as herein above reserved.

NOTE: It appears, according to our records, that a portion of this Tract is located within the restrictive safety fairway area as set out by the Corps of Engineers, U.S. Army and/or the restrictive anchorage area as set out by the U.S. Coast Guard.

NOTE: The Department of Wildlife and Fisheries has designated certain areas in the coastal waters of the State of Louisiana as Oyster Seed Bed Areas. The exact location of those Seed Bed Areas must be obtained from the Department of Wildlife and Fisheries and any work done under a mineral lease from the State of Louisiana may necessarily be conducted in conformity with the rules and regulations promulgated by the said Department of Wildlife and Fisheries for Oyster Seed Bed Areas.

Applicant: Energy Partners, Inc.

Bidder	Cash Payment	Price/Acre	Rental	Oil	Gas	Other



PLAQUEMINES PARISH

JEFFERSON PARISH

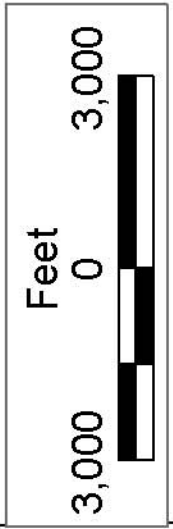
P.O.B.
X=2,457,659.89
Y=222,430.49

BLOCK GI0002

BLOCK GI0003

GRAND ISLE AREA

BLOCK GI0007



TRACT 37384 - Portion of Blocks 5 and 6, Grand Isle Area, Jefferson Parish, Louisiana

All of the lands now or formerly constituting the beds and bottoms of all water bodies of every nature and description the title of which vests in the State of Louisiana, together with all islands arising therein and other lands formed by accretion or by reliction, where allowed by law, excepting tax adjudicated lands, and not presently under mineral lease on May 11, 2005, situated in Jefferson Parish, Louisiana, and more particularly described as follows: Beginning at the Northeast Corner of Block 6, Grand Isle Area having Coordinates of X = 2,442,901.85 and Y = 215,051.47; Thence South 7,379.02 feet along the East Boundary of said Block 6 to a point having Coordinates of X = 2,442,901.85 and Y = 207,672.45; Thence West 14,758.42 feet to a point within Block 5 having Coordinates of X = 2,428,143.43 and Y = 207,672.45; Thence North 00 degrees 01 minutes 34 seconds East 829.77 feet to a point on the Coastline as defined by the report of the Special Master and set forth in the judgment decree in June 1975 by the Supreme Court of the United States in the litigation styled United States vs. Louisiana, et al No. 9 Original, having Coordinates of X = 2,428,143.81 and Y = 208,502.22; Thence Northeasterly on a straight line to a point having Coordinates of X = 2,428,924 and Y = 208,999; Thence Northeasterly on a straight line to a point having Coordinates of X = 2,430,176 and Y = 209,966; Thence Northeasterly on a straight line to a point having Coordinates of X = 2,433,051 and Y = 211,862; Thence Northeasterly on a straight line to a point having Coordinates of X = 2,436,419.00 and Y = 214,125.00; Thence Northeasterly on a straight line to a point having Coordinates of X = 2,437,398.76 and Y = 215,051.47, said point being the Northwest corner of said Block 6; Thence East 5,503.09 feet along the North Boundary of said Block 6 to the point of beginning containing approximately **1,784.47 acres**, all as more particularly outlined on a plat on file in the Office of Mineral Resources, Department of Natural Resources. All bearings, distances and coordinates are based on Louisiana Coordinate System of 1927, (North or South Zone), where applicable.

NOTE: The above description of the Tract nominated for lease has been provided and corrected, where required, exclusively by the nomination party. Any mineral lease selected from this Tract and awarded by the Louisiana State Mineral Board shall be without warranty of any kind, either express, implied, or statutory, including, but not limited to, the implied warranties of merchantability and fitness for a particular purpose. Should the mineral lease awarded by the Louisiana State Mineral Board be subsequently modified, cancelled or abrogated due to the existence of conflicting leases, operating agreements, private claims or other future obligations or conditions which may affect all or any portion of the leased Tract, it shall not relieve the Lessee of the obligation to pay any bonus due thereon to the Louisiana State Mineral Board, nor shall the Louisiana State Mineral Board be obligated to refund any consideration paid by the Lessor prior to such modification, cancellation, or abrogation, including, but not limited to, bonuses, rentals and royalties.

NOTE: The State of Louisiana does hereby reserve, and this lease shall be subject to, the imprescriptible right of surface use in the nature of a servitude in favor of the Department of Natural Resources, including its Offices and Commissions, for the sole purpose of implementing, constructing, servicing and maintaining approved coastal zone management and/or restoration projects. Utilization of any and all rights derived under this lease by the mineral lessee, its agents, successors or assigns, shall not interfere with nor hinder the reasonable surface use by the Department of Natural Resources, its Offices or Commissions, as herein above reserved.

NOTE: The Department of Wildlife and Fisheries has designated certain areas in the coastal waters of the State of Louisiana as Oyster Seed Bed Areas. The exact location of those Seed Bed Areas must be obtained from the Department of Wildlife and Fisheries and any work done under a mineral lease from the State of Louisiana may necessarily be conducted in conformity with the rules and regulations promulgated by the said Department of Wildlife and Fisheries for Oyster Seed Bed Areas.

Applicant: Energy Partners, Inc.

Bidder	Cash Payment	Price/Acre	Rental	Oil	Gas	Other



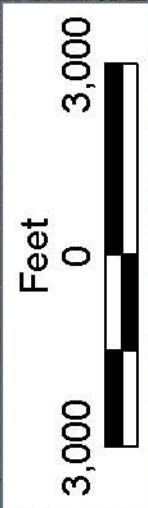
P.O.B.
X=2,442,901.85
Y=215,051.47

BLOCK GI0007

BLOCK GI0006

GRAND ISLE AREA

JEFFERSON PARISH



TRACT 37385 - Portion of Block 7, Grand Isle Area, Jefferson and Plaquemines Parishes, Louisiana

All of the lands now or formerly constituting the beds and bottoms of all water bodies of every nature and description the title of which vests in the State of Louisiana, together with all islands arising therein and other lands formed by accretion or by reliction, where allowed by law, excepting tax adjudicated lands, and not presently under mineral lease on May 11, 2005, situated in Jefferson and Plaquemines Parishes, Louisiana, and more particularly described as follows: Beginning at the Northeast Corner of Block 7, Grand Isle Area, having Coordinates of X = 2,457,659.89 and Y = 215,051.47; Thence South 7,379.02 feet along the East Boundary of said Block 7 to a point having Coordinates of X = 2,457,659.89 and Y = 207,672.45; Thence West 14,758.04 feet to a point on the West Boundary of said Block 7 having Coordinates of X = 2,442,901.85 and Y = 207,672.45; Thence North 7,379.02 feet along the West Boundary of said Block 7 to its Northwest Corner having Coordinates of X = 2,442,901.85 and Y = 215,051.47; Thence East 14,758.04 feet along the North Boundary of said Block 7 to the point of beginning containing approximately **2,500 acres**, all as more particularly outlined on a plat on file in the Office of Mineral Resources, Department of Natural Resources. All bearings, distances and coordinates are based on Louisiana Coordinate System of 1927, (North or South Zone), where applicable.

NOTE: The above description of the Tract nominated for lease has been provided and corrected, where required, exclusively by the nomination party. Any mineral lease selected from this Tract and awarded by the Louisiana State Mineral Board shall be without warranty of any kind, either express, implied, or statutory, including, but not limited to, the implied warranties of merchantability and fitness for a particular purpose. Should the mineral lease awarded by the Louisiana State Mineral Board be subsequently modified, cancelled or abrogated due to the existence of conflicting leases, operating agreements, private claims or other future obligations or conditions which may affect all or any portion of the leased Tract, it shall not relieve the Lessee of the obligation to pay any bonus due thereon to the Louisiana State Mineral Board, nor shall the Louisiana State Mineral Board be obligated to refund any consideration paid by the Lessor prior to such modification, cancellation, or abrogation, including, but not limited to, bonuses, rentals and royalties.

NOTE: The State of Louisiana does hereby reserve, and this lease shall be subject to, the imprescriptible right of surface use in the nature of a servitude in favor of the Department of Natural Resources, including its Offices and Commissions, for the sole purpose of implementing, constructing, servicing and maintaining approved coastal zone management and/or restoration projects. Utilization of any and all rights derived under this lease by the mineral lessee, its agents, successors or assigns, shall not interfere with nor hinder the reasonable surface use by the Department of Natural Resources, its Offices or Commissions, as herein above reserved.

NOTE: It appears, according to our records, that a portion of this Tract is located within the restrictive safety fairway area as set out by the Corps of Engineers, U.S. Army and/or the restrictive anchorage area as set out by the U.S. Coast Guard.

NOTE: The Department of Wildlife and Fisheries has designated certain areas in the coastal waters of the State of Louisiana as Oyster Seed Bed Areas. The exact location of those Seed Bed Areas must be obtained from the Department of Wildlife and Fisheries and any work done under a mineral lease from the State of Louisiana may necessarily be conducted in conformity with the rules and regulations promulgated by the said Department of Wildlife and Fisheries for Oyster Seed Bed Areas.

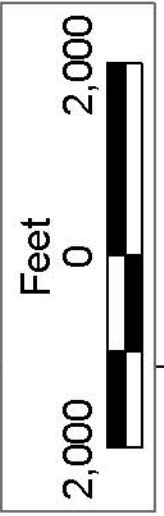
Applicant: Energy Partners, Inc

Bidder	Cash Payment	Price/Acre	Rental	Oil	Gas	Other



PLAQUEMINES PARISH

P.O.B.
X=2,457,659.89
Y=215,051.47

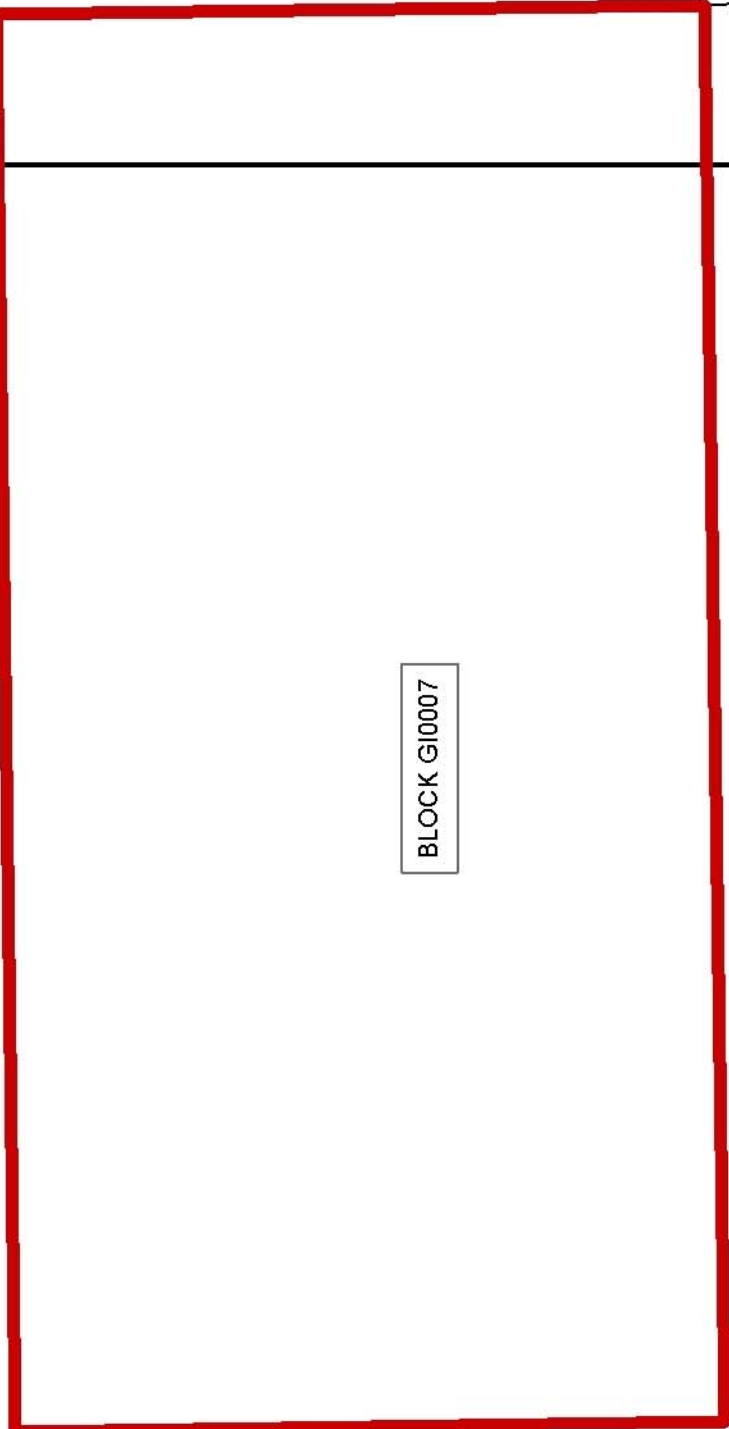


JEFFERSON PARISH

BLOCK GI0003

BLOCK GI0007

GRAND ISLE AREA



TRACT 37386 - Portion of Block 8, Grand Isle Area, Plaquemines Parish, Louisiana

All of the lands now or formerly constituting the beds and bottoms of all water bodies of every nature and description the title of which vests in the State of Louisiana, together with all islands arising therein and other lands formed by accretion or by reliction, where allowed by law, excepting tax adjudicated lands, and not presently under mineral lease on May 11, 2005, situated in Plaquemines Parish, Louisiana, and more particularly described as follows: Beginning at the Northeast Corner of Block 8, Grand Isle Area, having Coordinates of X = 2,472,417.93 and Y = 215,051.47; Thence South 7,379.02 feet along the East Boundary of said Block 8 to a point having Coordinates of X = 2,472,417.93 and Y = 207,672.45; Thence West 14,758.04 feet to a point on the West Boundary of said Block 8 to a point having Coordinates of X = 2,457,659.89 and Y = 207,672.45; Thence North 7,379.02 feet along the West Boundary of said Block 8 to its Northwest Corner having Coordinates of X = 2,457,659.89 and Y = 215,051.47; Thence East 14,758.04 feet along the North Boundary of said Block 8 to the point of beginning containing approximately **2,500.00 acres**, all as more particularly outlined on a plat on file in the Office of Mineral Resources, Department of Natural Resources. All bearings, distances and coordinates are based on Louisiana Coordinate System of 1927, (North or South Zone), where applicable.

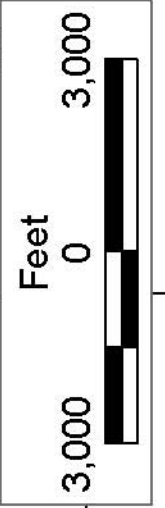
NOTE: The above description of the Tract nominated for lease has been provided and corrected, where required, exclusively by the nomination party. Any mineral lease selected from this Tract and awarded by the Louisiana State Mineral Board shall be without warranty of any kind, either express, implied, or statutory, including, but not limited to, the implied warranties of merchantability and fitness for a particular purpose. Should the mineral lease awarded by the Louisiana State Mineral Board be subsequently modified, cancelled or abrogated due to the existence of conflicting leases, operating agreements, private claims or other future obligations or conditions which may affect all or any portion of the leased Tract, it shall not relieve the Lessee of the obligation to pay any bonus due thereon to the Louisiana State Mineral Board, nor shall the Louisiana State Mineral Board be obligated to refund any consideration paid by the Lessor prior to such modification, cancellation, or abrogation, including, but not limited to, bonuses, rentals and royalties.

NOTE: The State of Louisiana does hereby reserve, and this lease shall be subject to, the imprescriptible right of surface use in the nature of a servitude in favor of the Department of Natural Resources, including its Offices and Commissions, for the sole purpose of implementing, constructing, servicing and maintaining approved coastal zone management and/or restoration projects. Utilization of any and all rights derived under this lease by the mineral lessee, its agents, successors or assigns, shall not interfere with nor hinder the reasonable surface use by the Department of Natural Resources, its Offices or Commissions, as herein above reserved.

NOTE: It appears, according to our records, that a portion of this Tract is located within the restrictive safety fairway area as set out by the Corps of Engineers, U.S. Army and/or the restrictive anchorage area as set out by the U.S. Coast Guard.

Applicant: Energy Partners, Inc.

Bidder	Cash Payment	Price/Acre	Rental	Oil	Gas	Other



PLAQUEMINES PARISH

BLOCK GI0002

P.O.B.
X=2,472,417.93
Y=216,051.47

BLOCK GI0008

WEST
DELTA
AREA

GRAND ISLE AREA

JEFFERSON
PARISH