

TRACT 37357 - St. Bernard Parish, Louisiana

All of the lands now or formerly constituting the beds and bottoms of all water bodies of every nature and description the title of which vests in the State of Louisiana, together with all islands arising therein and other lands formed by accretion or by reliction, where allowed by law, excepting tax adjudicated lands, and not presently under mineral lease on May 11, 2005, situated in St. Bernard Parish, Louisiana, and more particularly described as follows: Beginning at a point having Coordinates of X = 2,526,600.00 and Y = 420,465.00; thence West 10,600.00 feet to a point having Coordinates of X = 2,516,000.00 and Y = 420,465.00; thence North 10,870.00 feet to a point having Coordinates of X = 2,516,000.00 and Y = 431,335.00; thence East 10,600.00 feet to a point having Coordinates of X = 2,526,600.00 and Y = 431,335.00; thence South 10,870.00 feet to the point of beginning, containing approximately **29 acres**, all as more particularly outlined on a plat on file in the Office of Mineral Resources, Department of Natural Resources. All bearings, distances and coordinates are based on Louisiana Coordinate System of 1927, (North or South Zone), where applicable.

NOTE: The above description of the Tract nominated for lease has been provided and corrected, where required, exclusively by the nomination party. Any mineral lease selected from this Tract and awarded by the Louisiana State Mineral Board shall be without warranty of any kind, either express, implied, or statutory, including, but not limited to, the implied warranties of merchantability and fitness for a particular purpose. Should the mineral lease awarded by the Louisiana State Mineral Board be subsequently modified, cancelled or abrogated due to the existence of conflicting leases, operating agreements, private claims or other future obligations or conditions which may affect all or any portion of the leased Tract, it shall not relieve the Lessee of the obligation to pay any bonus due thereon to the Louisiana State Mineral Board, nor shall the Louisiana State Mineral Board be obligated to refund any consideration paid by the Lessor prior to such modification, cancellation, or abrogation, including, but not limited to, bonuses, rentals and royalties.

NOTE: The Office of Mineral Resources will require a minimum bonus of \$180 per acre and a minimum royalty of 21%.

NOTE: The State of Louisiana does hereby reserve, and this lease shall be subject to, the imprescriptible right of surface use in the nature of a servitude in favor of the Department of Natural Resources, including its Offices and Commissions, for the sole purpose of implementing, constructing, servicing and maintaining approved coastal zone management and/or restoration projects. Utilization of any and all rights derived under this lease by the mineral lessee, its agents, successors or assigns, shall not interfere with nor hinder the reasonable surface use by the Department of Natural Resources, its Offices or Commissions, as herein above reserved.

NOTE: The Department of Wildlife and Fisheries has designated certain areas in the coastal waters of the State of Louisiana as Oyster Seed Bed Areas. The exact location of those Seed Bed Areas must be obtained from the Department of Wildlife and Fisheries and any work done under a mineral lease from the State of Louisiana may necessarily be conducted in conformity with the rules and regulations promulgated by the said Department of Wildlife and Fisheries for Oyster Seed Bed Areas.

Applicant: Doyle Land Services, Inc.

Bidder	Cash Payment	Price/Acre	Rental	Oil	Gas	Other



BAYOU LA LOUTRE

P.O.B.
X=2,526,600.00
Y=420,465.00

Feet

2,000

0

2,000



T14S - R15E

ST BERNARD PARISH

TRACT 37358 - St. Bernard Parish, Louisiana

All of the lands now or formerly constituting the beds and bottoms of all water bodies of every nature and description the title of which vests in the State of Louisiana, together with all islands arising therein and other lands formed by accretion or by reliction, where allowed by law, excepting tax adjudicated lands, and not presently under mineral lease on May 11, 2005, situated in St. Bernard Parish, Louisiana, and more particularly described as follows: Beginning at a point having Coordinates of X = 2,526,600.00 and Y = 420,465.00; thence North 10,870.00 feet to a point having Coordinates of X = 2,526,600.00 and Y = 431,335.00; thence East 10,600.00 feet to a point having Coordinates of X = 2,537,200.00 and Y = 431,335.00; thence South 10,870.00 feet to a point having Coordinates of X = 2,537,200.00 and Y = 420,465.00; thence West 10,600.00 feet to the point of beginning, containing approximately **35 acres**, all as more particularly outlined on a plat on file in the Office of Mineral Resources, Department of Natural Resources. All bearings, distances and coordinates are based on Louisiana Coordinate System of 1927, (North or South Zone), where applicable.

NOTE: The above description of the Tract nominated for lease has been provided and corrected, where required, exclusively by the nomination party. Any mineral lease selected from this Tract and awarded by the Louisiana State Mineral Board shall be without warranty of any kind, either express, implied, or statutory, including, but not limited to, the implied warranties of merchantability and fitness for a particular purpose. Should the mineral lease awarded by the Louisiana State Mineral Board be subsequently modified, cancelled or abrogated due to the existence of conflicting leases, operating agreements, private claims or other future obligations or conditions which may affect all or any portion of the leased Tract, it shall not relieve the Lessee of the obligation to pay any bonus due thereon to the Louisiana State Mineral Board, nor shall the Louisiana State Mineral Board be obligated to refund any consideration paid by the Lessor prior to such modification, cancellation, or abrogation, including, but not limited to, bonuses, rentals and royalties.

NOTE: The Office of Mineral Resources will require a minimum bonus of \$180 per acre and a minimum royalty of 21%.

NOTE: The State of Louisiana does hereby reserve, and this lease shall be subject to, the imprescriptible right of surface use in the nature of a servitude in favor of the Department of Natural Resources, including its Offices and Commissions, for the sole purpose of implementing, constructing, servicing and maintaining approved coastal zone management and/or restoration projects. Utilization of any and all rights derived under this lease by the mineral lessee, its agents, successors or assigns, shall not interfere with nor hinder the reasonable surface use by the Department of Natural Resources, its Offices or Commissions, as herein above reserved.

NOTE: The Department of Wildlife and Fisheries has designated certain areas in the coastal waters of the State of Louisiana as Oyster Seed Bed Areas. The exact location of those Seed Bed Areas must be obtained from the Department of Wildlife and Fisheries and any work done under a mineral lease from the State of Louisiana may necessarily be conducted in conformity with the rules and regulations promulgated by the said Department of Wildlife and Fisheries for Oyster Seed Bed Areas.

Applicant: Doyle Land Services, Inc.

Bidder	Cash Payment	Price/Acre	Rental	Oil	Gas	Other

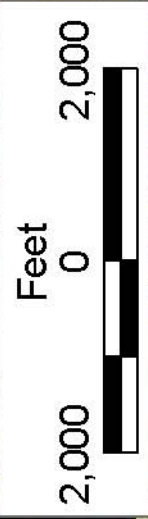


T14S - R16E

T14S - R15E

ST BERNARD PARISH

BAYOU LA LOUTRE



P.O.B.
X=2,526,600.00
Y=420,465.00



TRACT 37359 - Assumption and St. Martin Parishes, Louisiana

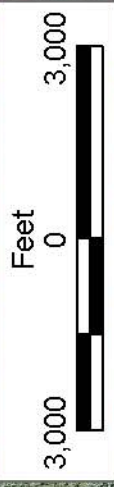
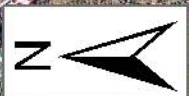
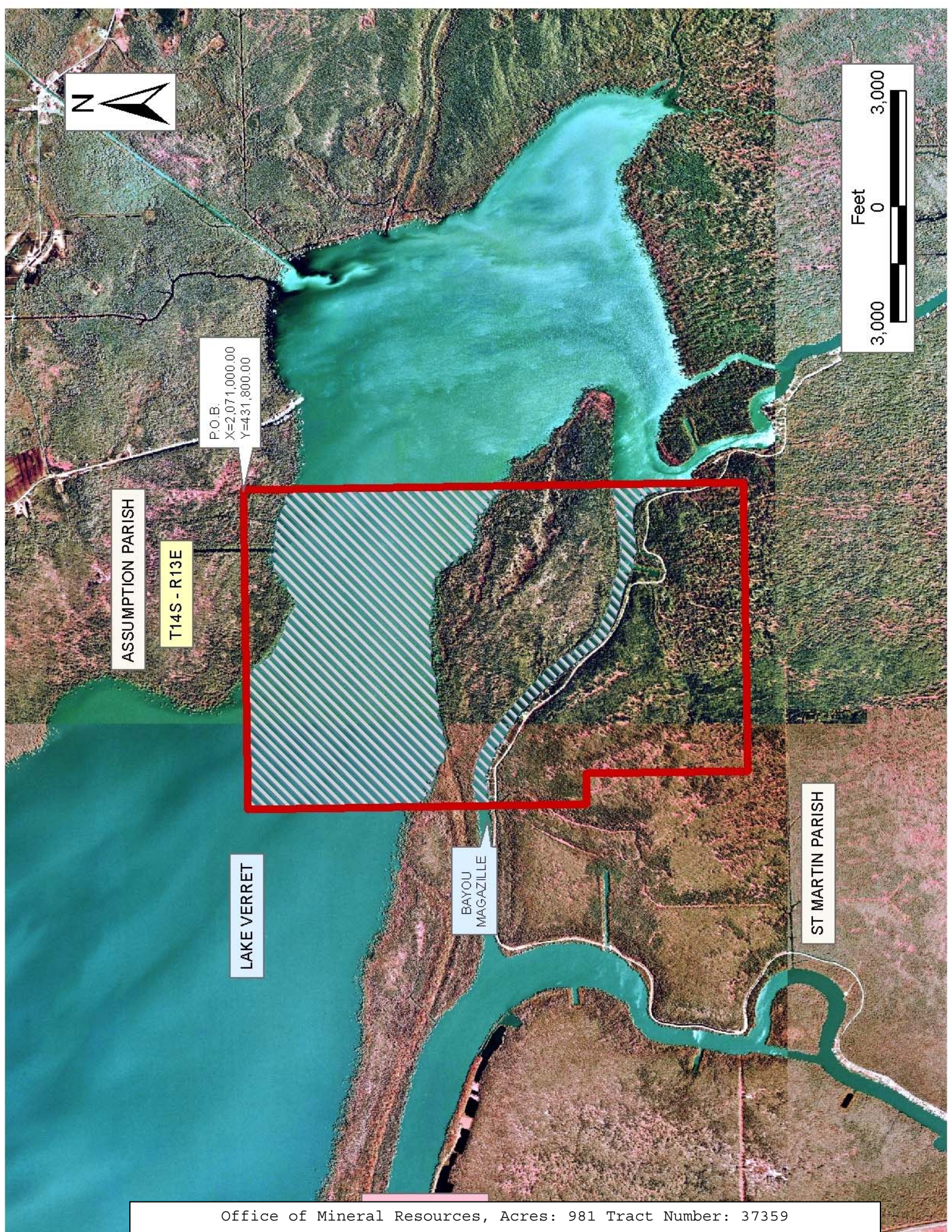
All of the lands now or formerly constituting the beds and bottoms of all water bodies of every nature and description the title of which vests in the State of Louisiana, together with all islands arising therein and other lands formed by accretion or by reliction, where allowed by law, excepting tax adjudicated lands, and not presently under mineral lease on May 11, 2005, situated in Assumption and St. Martin Parishes, Louisiana, and more particularly described as follows: Beginning at a point having Coordinates of X = 2,071,000.00 and Y = 431,800.00; Thence South 13,000.00 feet to a point having Coordinates of X = 2,071,000.00 and Y = 418,800.00; Thence West 7,500.00 feet to a point having Coordinates of X = 2,063,500.00 and Y = 418,800.00; Thence North 4,200.00 feet to a point having Coordinates of X = 2,063,500.00 and Y = 423,000.00; Thence West 800.00 feet to a point having Coordinates of X = 2,062,700.00 and Y = 423,000.00; Thence North 8,800.00 feet to a point having Coordinates of X = 2,062,700.00 and Y = 431,800.00; Thence East 8,300.00 feet to the point of beginning, containing approximately **981 acres**, all as more particularly outlined on a plat on file in the Office of Mineral Resources, Department of Natural Resources. All bearings, distances and coordinates are based on Louisiana Coordinate System of 1927, (North or South Zone), where applicable.

NOTE: The above description of the Tract nominated for lease has been provided and corrected, where required, exclusively by the nomination party. Any mineral lease selected from this Tract and awarded by the Louisiana State Mineral Board shall be without warranty of any kind, either express, implied, or statutory, including, but not limited to, the implied warranties of merchantability and fitness for a particular purpose. Should the mineral lease awarded by the Louisiana State Mineral Board be subsequently modified, cancelled or abrogated due to the existence of conflicting leases, operating agreements, private claims or other future obligations or conditions which may affect all or any portion of the leased Tract, it shall not relieve the Lessee of the obligation to pay any bonus due thereon to the Louisiana State Mineral Board, nor shall the Louisiana State Mineral Board be obligated to refund any consideration paid by the Lessor prior to such modification, cancellation, or abrogation, including, but not limited to, bonuses, rentals and royalties.

NOTE: The State of Louisiana does hereby reserve, and this lease shall be subject to, the imprescriptible right of surface use in the nature of a servitude in favor of the Department of Natural Resources, including its Offices and Commissions, for the sole purpose of implementing, constructing, servicing and maintaining approved coastal zone management and/or restoration projects. Utilization of any and all rights derived under this lease by the mineral lessee, its agents, successors or assigns, shall not interfere with nor hinder the reasonable surface use by the Department of Natural Resources, its Offices or Commissions, as herein above reserved.

Applicant: Audubon Oil And Gas Corporation

Bidder	Cash Payment	Price/Acre	Rental	Oil	Gas	Other



P.O.B.
X=2,071,000.00
Y=431,800.00

ASSUMPTION PARISH

T14S - R13E

LAKE VERRET

BAYOU
MAGAZILLE

ST MARTIN PARISH

TRACT 37360 - Assumption and St. Martin Parishes, Louisiana

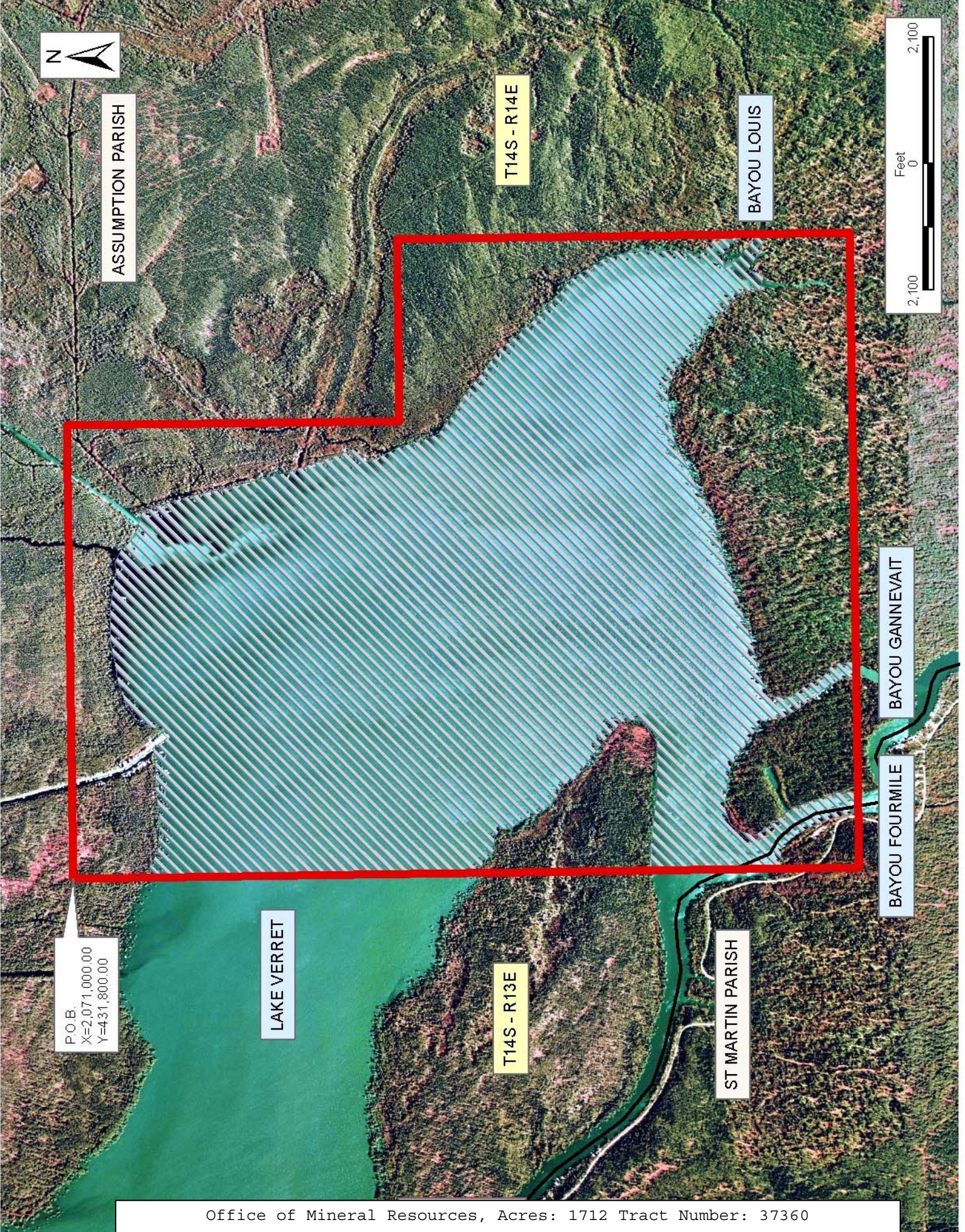
All of the lands now or formerly constituting the beds and bottoms of all water bodies of every nature and description the title of which vests in the State of Louisiana, together with all islands arising therein and other lands formed by accretion or by reliction, where allowed by law, excepting tax adjudicated lands, and not presently under mineral lease on May 11, 2005, situated in Assumption and St. Martin Parishes, Louisiana, and more particularly described as follows: Beginning at a point having Coordinates of X = 2,071,000.00 and Y = 431,800.00; Thence East 7,500.00 feet to a point having Coordinates of X = 2,078,500.00 and Y = 431,800.00; Thence South 5,500.00 feet to a point having Coordinates of X = 2,078,500.00 and Y = 426,300.00; Thence East 3,000.00 feet to a point having Coordinates of X = 2,081,500.00 and Y = 426,300.00; Thence South 7,500.00 feet to a point having Coordinates of X = 2,081,500.00 and Y = 418,800.00; Thence West 10,500.00 feet to a point having Coordinates of X = 2,071,000.00 and Y = 418,800.00; Thence North 13,000.00 feet to the point of beginning, containing approximately **1,712 acres**, all as more particularly outlined on a plat on file in the Office of Mineral Resources, Department of Natural Resources. All bearings, distances and coordinates are based on Louisiana Coordinate System of 1927, (North or South Zone), where applicable.

NOTE: The above description of the Tract nominated for lease has been provided and corrected, where required, exclusively by the nomination party. Any mineral lease selected from this Tract and awarded by the Louisiana State Mineral Board shall be without warranty of any kind, either express, implied, or statutory, including, but not limited to, the implied warranties of merchantability and fitness for a particular purpose. Should the mineral lease awarded by the Louisiana State Mineral Board be subsequently modified, cancelled or abrogated due to the existence of conflicting leases, operating agreements, private claims or other future obligations or conditions which may affect all or any portion of the leased Tract, it shall not relieve the Lessee of the obligation to pay any bonus due thereon to the Louisiana State Mineral Board, nor shall the Louisiana State Mineral Board be obligated to refund any consideration paid by the Lessor prior to such modification, cancellation, or abrogation, including, but not limited to, bonuses, rentals and royalties.

NOTE: The State of Louisiana does hereby reserve, and this lease shall be subject to, the imprescriptible right of surface use in the nature of a servitude in favor of the Department of Natural Resources, including its Offices and Commissions, for the sole purpose of implementing, constructing, servicing and maintaining approved coastal zone management and/or restoration projects. Utilization of any and all rights derived under this lease by the mineral lessee, its agents, successors or assigns, shall not interfere with nor hinder the reasonable surface use by the Department of Natural Resources, its Offices or Commissions, as herein above reserved.

Applicant: Audubon Oil And Gas Corporation

Bidder	Cash Payment	Price/Acre	Rental	Oil	Gas	Other



ASSUMPTION PARISH

T14S - R14E

BAYOU LOUIS



P.O.B.
X=2,071,000.00
Y=431,800.00

LAKE VERRET

T14S - R13E

ST MARTIN PARISH

BAYOU GANNEVAIT

BAYOU FOURMILE

TRACT 37361 - St. Bernard Parish, Louisiana

All of the lands now or formerly constituting the beds and bottoms of all water bodies of every nature and description the title of which vests in the State of Louisiana, together with all islands arising therein and other lands formed by accretion or by reliction, where allowed by law, excepting tax adjudicated lands, and not presently under mineral lease on May 11, 2005, situated in St. Bernard Parish, Louisiana, and more particularly described as follows: Beginning at a point having Coordinates of X = 2,496,285.00 and Y = 413,730.00; thence North 11,255.00 feet to a point having Coordinates of X = 2,496,285.00 and Y = 424,985.00; thence East 10,600.00 feet to a point having Coordinates of X = 2,506,885.00 and Y = 424,985.00; thence South 11,255.00 feet to a point having Coordinates of X = 2,506,885.00 and Y = 413,730.00; thence West 10,600.00 feet to the point of beginning, containing approximately **25 acres**, all as more particularly outlined on a plat on file in the Office of Mineral Resources, Department of Natural Resources. All bearings, distances and coordinates are based on Louisiana Coordinate System of 1927, (North or South Zone), where applicable.

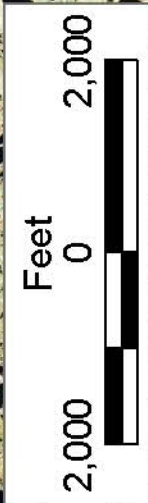
NOTE: The above description of the Tract nominated for lease has been provided and corrected, where required, exclusively by the nomination party. Any mineral lease selected from this Tract and awarded by the Louisiana State Mineral Board shall be without warranty of any kind, either express, implied, or statutory, including, but not limited to, the implied warranties of merchantability and fitness for a particular purpose. Should the mineral lease awarded by the Louisiana State Mineral Board be subsequently modified, cancelled or abrogated due to the existence of conflicting leases, operating agreements, private claims or other future obligations or conditions which may affect all or any portion of the leased Tract, it shall not relieve the Lessee of the obligation to pay any bonus due thereon to the Louisiana State Mineral Board, nor shall the Louisiana State Mineral Board be obligated to refund any consideration paid by the Lessor prior to such modification, cancellation, or abrogation, including, but not limited to, bonuses, rentals and royalties.

NOTE: The Office of Mineral Resources will require a minimum bonus of \$180 per acre and a minimum royalty of 21%.

NOTE: The State of Louisiana does hereby reserve, and this lease shall be subject to, the imprescriptible right of surface use in the nature of a servitude in favor of the Department of Natural Resources, including its Offices and Commissions, for the sole purpose of implementing, constructing, servicing and maintaining approved coastal zone management and/or restoration projects. Utilization of any and all rights derived under this lease by the mineral lessee, its agents, successors or assigns, shall not interfere with nor hinder the reasonable surface use by the Department of Natural Resources, its Offices or Commissions, as herein above reserved.

Applicant: Doyle Land Services, Inc.

Bidder	Cash Payment	Price/Acre	Rental	Oil	Gas	Other



T14S - R15E

ST BERNARD PARISH

BAYOU TERRE
AUX BOEUFs



P.O.B.
X=2,496,285.00
Y=4,13,730.00

T14S - R14E

TRACT 37362 - Cameron Parish, Louisiana

All of the lands now or formerly constituting the beds and bottoms of all water bodies of every nature and description the title of which vests in the State of Louisiana, together with all islands arising therein and other lands formed by accretion or by reliction, where allowed by law, excepting tax adjudicated lands, and not presently under mineral lease on May 11, 2005, situated in Cameron Parish, Louisiana, and more particularly described as follows: Beginning at a point being a projection of the East line of Block 7, West Cameron Area, Revised, having Coordinates of X = 1,347,177.57 and Y = 408,500.00; thence South 3,299.47 feet to the Northeast corner of said Block 7, having Coordinates of X = 1,347,177.57 and Y = 405,200.53; thence Northwesterly on a straight line to a point having Coordinates of X = 1,341,917 and Y = 405,967; thence Northwesterly on a straight line to a point having Coordinates of X = 1,333,745 and Y = 406,888; and thence Northwesterly on a straight line to the Northwest corner of said Block 7 having Coordinates of X = 1,332,419.52 and Y = 406,947.84; thence North 1,552.16 feet along the projection of the West line of said Block 7 to a point having Coordinates of X = 1,332,419.52 and Y = 408,500.00; thence East 14,758.05 feet to the point of beginning, containing approximately **18 acres**, all as more particularly outlined on a plat on file in the Office of Mineral Resources, Department of Natural Resources. All bearings, distances and coordinates are based on Louisiana Coordinate System of 1927, (North or South Zone), where applicable.

NOTE: The above description of the Tract nominated for lease has been provided and corrected, where required, exclusively by the nomination party. Any mineral lease selected from this Tract and awarded by the Louisiana State Mineral Board shall be without warranty of any kind, either express, implied, or statutory, including, but not limited to, the implied warranties of merchantability and fitness for a particular purpose. Should the mineral lease awarded by the Louisiana State Mineral Board be subsequently modified, cancelled or abrogated due to the existence of conflicting leases, operating agreements, private claims or other future obligations or conditions which may affect all or any portion of the leased Tract, it shall not relieve the Lessee of the obligation to pay any bonus due thereon to the Louisiana State Mineral Board, nor shall the Louisiana State Mineral Board be obligated to refund any consideration paid by the Lessor prior to such modification, cancellation, or abrogation, including, but not limited to, bonuses, rentals and royalties.

NOTE: The State of Louisiana does hereby reserve, and this lease shall be subject to, the imprescriptible right of surface use in the nature of a servitude in favor of the Department of Natural Resources, including its Offices and Commissions, for the sole purpose of implementing, constructing, servicing and maintaining approved coastal zone management and/or restoration projects. Utilization of any and all rights derived under this lease by the mineral lessee, its agents, successors or assigns, shall not interfere with nor hinder the reasonable surface use by the

Department of Natural Resources, its Offices or Commissions, as herein above reserved.

Applicant: Merlin Exploration, Inc.

Bidder	Cash Payment	Price/Acre	Rental	Oil	Gas	Other



P.O.B.
X=1,347,177.57
Y=408,500

CAMERON PARISH

T15S - R10W

T15S - R11W

WEST CAMERON AREA, REVISED

BLOCK WC0006

BLOCK WC0007

BLOCK WC0008



TRACT 37363 - St. Mary Parish, Louisiana

All of the lands now or formerly constituting the beds and bottoms of all water bodies of every nature and description the title of which vests in the State of Louisiana, together with all islands arising therein and other lands formed by accretion or by reliction, where allowed by law, excepting tax adjudicated lands, and not presently under mineral lease on May 11, 2005, situated in St. Mary Parish, Louisiana, and more particularly described as follows: Beginning at a point having Coordinates of X = 1,868,081.00 and Y = 394,850.00; thence East 9,919.00 feet to a point having Coordinates of X = 1,878,000.00 and Y = 394,850.00; thence South 5,850.00 feet to a point having Coordinates of X = 1,878,000.00 and Y = 389,000.00; thence West 9,919.00 feet to a point having Coordinates of X = 1,868,081.00 and Y = 389,000.00; thence North 5,850.00 to the point of beginning, **LESS AND EXCEPT** as of February 28, 2005, any portion of State Lease No. 340 that may lie within the above described tract, containing approximately **237 acres**, all as more particularly outlined on a plat on file in the Office of Mineral Resources, Department of Natural Resources. All bearings, distances and coordinates are based on Louisiana Coordinate System of 1927, (North or South Zone), where applicable.

NOTE: The above description of the Tract nominated for lease has been provided and corrected, where required, exclusively by the nomination party. Any mineral lease selected from this Tract and awarded by the Louisiana State Mineral Board shall be without warranty of any kind, either express, implied, or statutory, including, but not limited to, the implied warranties of merchantability and fitness for a particular purpose. Should the mineral lease awarded by the Louisiana State Mineral Board be subsequently modified, cancelled or abrogated due to the existence of conflicting leases, operating agreements, private claims or other future obligations or conditions which may affect all or any portion of the leased Tract, it shall not relieve the Lessee of the obligation to pay any bonus due thereon to the Louisiana State Mineral Board, nor shall the Louisiana State Mineral Board be obligated to refund any consideration paid by the Lessor prior to such modification, cancellation, or abrogation, including, but not limited to, bonuses, rentals and royalties.

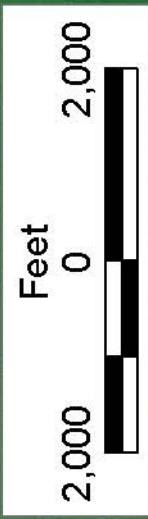
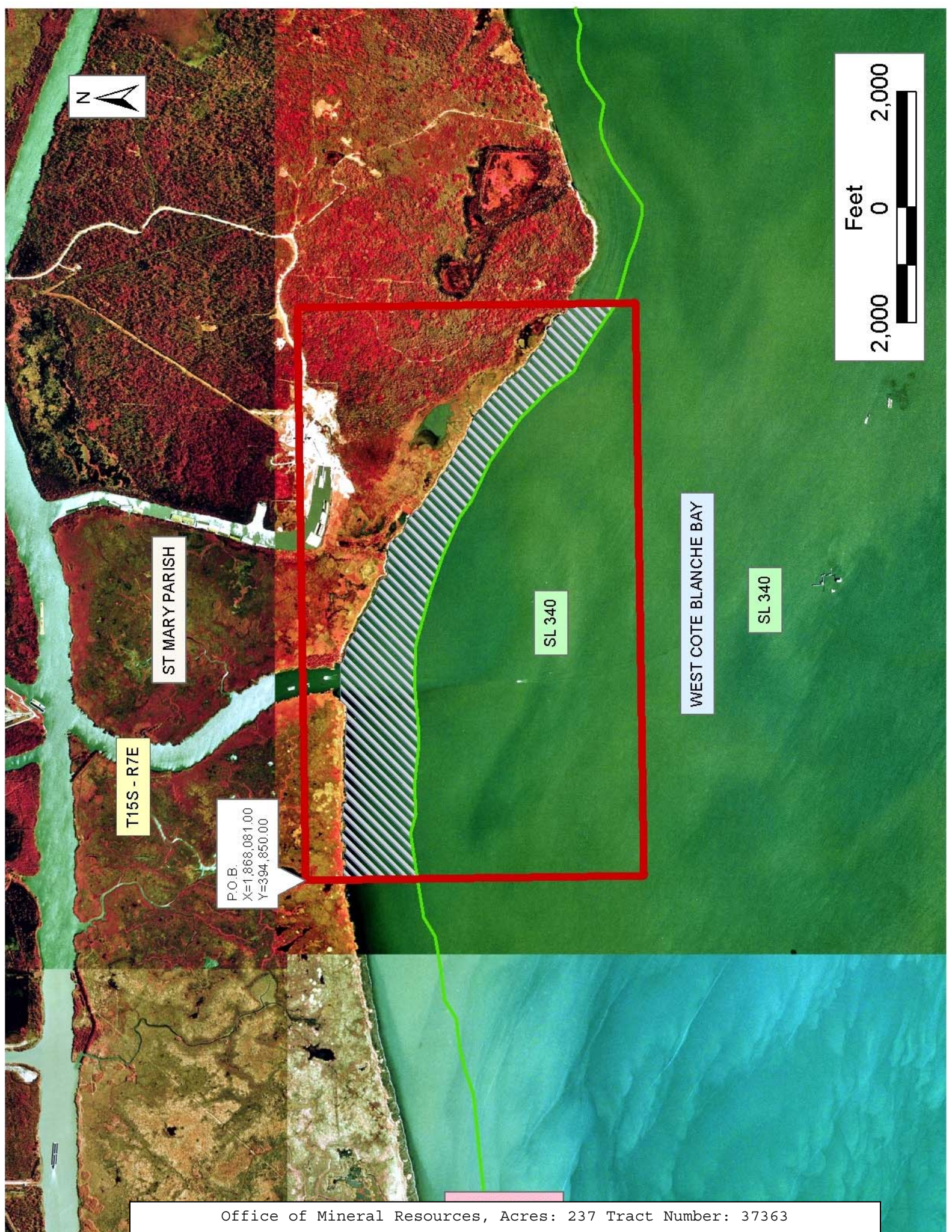
NOTE: The State of Louisiana does hereby reserve, and this lease shall be subject to, the imprescriptible right of surface use in the nature of a servitude in favor of the Department of Natural Resources, including its Offices and Commissions, for the sole purpose of implementing, constructing, servicing and maintaining approved coastal zone management and/or restoration projects. Utilization of any and all rights derived under this lease by the mineral lessee, its agents, successors or assigns, shall not interfere with nor hinder the reasonable surface use by the Department of Natural Resources, its Offices or Commissions, as herein above reserved.

NOTE: The Department of Wildlife and Fisheries has designated certain areas in the coastal waters of the State of Louisiana as Oyster Seed Bed

Areas. The exact location of those Seed Bed Areas must be obtained from the Department of Wildlife and Fisheries and any work done under a mineral lease from the State of Louisiana may necessarily be conducted in conformity with the rules and regulations promulgated by the said Department of Wildlife and Fisheries for Oyster Seed Bed Areas.

Applicant: Acadian Land Services, L.L.C.

Bidder	Cash Payment	Price/Acre	Rental	Oil	Gas	Other



ST MARY PARISH

T15S - R7E

P.O.B.
X=1,868,081.00
Y=394,850.00

SL 340

WEST COTE BLANCHE BAY

SL 340

TRACT 37364 - Portion of Block 47, Breton Sound Area, Plaquemines Parish, Louisiana

All of the lands now or formerly constituting the beds and bottoms of all water bodies of every nature and description the title of which vests in the State of Louisiana, together with all islands arising therein and other lands formed by accretion or by reliction, where allowed by law, excepting tax adjudicated lands, and not presently under mineral lease on May 11, 2005, situated in Plaquemines Parish, Louisiana, and more particularly described as follows: Beginning at a point on the West line of Block 47, Breton Sound Area, having Coordinates of X = 2,650,100.00 and Y = 300,256.35; thence East 8,742.22 feet to a point on the Northwest boundary of State Lease No. 16569, having Coordinates of X = 2,658,842.22 and Y = 300,256.35; thence along the boundary of said State Lease No. 16569 the following courses: South 56 degrees 27 minutes 32 seconds West 1,640.35 feet to a point having Coordinates of X = 2,657,475.00 and Y = 299,350.00, South 1,270.01 feet to a point having Coordinates of X = 2,657,475.00 and Y = 298,079.99, South 63 degrees 19 minutes 35 seconds East 1,204.00 feet to a point having Coordinates of X = 2,658,550.87 and Y = 297,539.51, and North 59 degrees 36 minutes 35 seconds East 1,730.33 feet to the Southwest corner of State Lease No. 18081, having Coordinates of X = 2,660,043.46 and Y = 298,414.86; thence South 47 degrees 32 minutes 36 seconds East 1,114.44 feet along the Southern line of said State Lease No. 18081 to its Southeast corner, said corner also being a point on the Northwesterly line of State Lease No. 16569, having Coordinates of X = 2,660,865.68 and Y = 297,662.57; thence along the boundary of said State Lease No. 16569 the following courses: South 50 degrees 54 minutes 25 seconds West 1,260.13 feet to a point having Coordinates of X = 2,659,887.66 and Y = 296,867.96, South 63 degrees 19 minutes 35 seconds East 3,203.23 feet to a point having Coordinates of X = 2,662,749.99 and Y = 295,430.00, East 1,040.01 feet to a point having Coordinates of X = 2,663,790.00 and Y = 295,430.00; and North 23 degrees 40 minutes 37 seconds East 2,639.56 feet to its most Easterly Southeast corner, said corner also being a point on the East line of said Block 47, having Coordinates of X = 2,664,850.00 and Y = 297,847.38; thence South 5,017.37 feet along the East line of said Block 47 to its Southeast corner having Coordinates of X = 2,664,850.00 and Y = 292,830.00; thence West 4,100.00 feet along the South line of said Block 47 to the Northeast corner of State Lease No. 17487, having Coordinates of X = 2,660,750.00 and Y = 292,830.00; thence West 2,300.00 feet along the North line of said State Lease No. 17487 to its Northwest corner also being a point on the South line of said Block 47, having Coordinates of X = 2,658,450.00 and Y = 292,830.00; thence West 8,350.00 feet along the South line of said Block 47 to its Southwest corner having Coordinates of X = 2,650,100.00 and Y = 292,830.00; thence North 7,426.35 feet along the West line of said Block 47 to the point of beginning, containing approximately **1,942.50 acres**, all as more particularly outlined on a plat on file in the Office of Mineral Resources, Department of Natural Resources. All bearings, distances and coordinates are based on Louisiana Coordinate System of 1927, (North or South Zone), where applicable.

NOTE: The above description of the Tract nominated for lease has been provided and corrected, where required, exclusively by the nomination party. Any mineral lease selected from this Tract and awarded by the Louisiana State Mineral Board shall be without warranty of any kind, either express, implied, or statutory, including, but not limited to, the implied warranties of merchantability and fitness for a particular purpose. Should the mineral lease awarded by the Louisiana State Mineral Board be subsequently modified, cancelled or abrogated due to the existence of conflicting leases, operating agreements, private claims or other future obligations or conditions which may affect all or any portion of the leased Tract, it shall not relieve the Lessee of the obligation to pay any bonus due thereon to the Louisiana State Mineral Board, nor shall the Louisiana State Mineral Board be obligated to refund any consideration paid by the Lessor prior to such modification, cancellation, or abrogation, including, but not limited to, bonuses, rentals and royalties.

NOTE: The State of Louisiana does hereby reserve, and this lease shall be subject to, the imprescriptible right of surface use in the nature of a servitude in favor of the Department of Natural Resources, including its Offices and Commissions, for the sole purpose of implementing, constructing, servicing and maintaining approved coastal zone management and/or restoration projects. Utilization of any and all rights derived under this lease by the mineral lessee, its agents, successors or assigns, shall not interfere with nor hinder the reasonable surface use by the Department of Natural Resources, its Offices or Commissions, as herein above reserved.

Applicant: Fleetwood Resources, Inc.

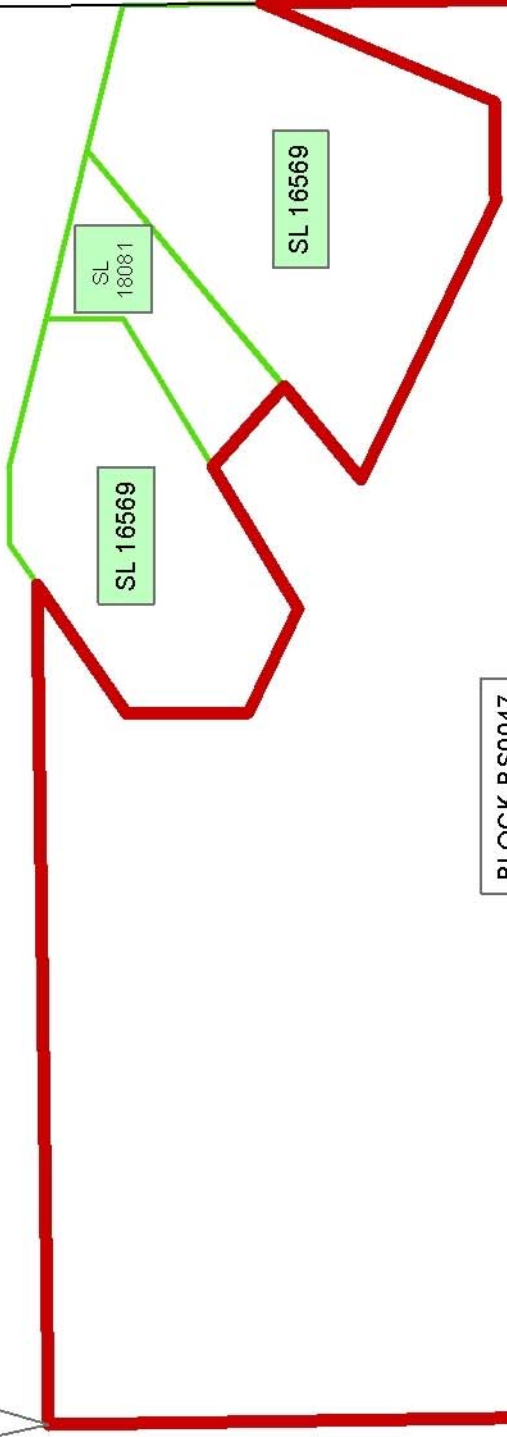
Bidder	Cash Payment	Price/Acre	Rental	Oil	Gas	Other



PLAQUEMINES PARISH

BRETON SOUND AREA

P.O.B.
X=2,650,100.00
Y=300,256.35



BLOCK
BS0046

BLOCK
BS0051

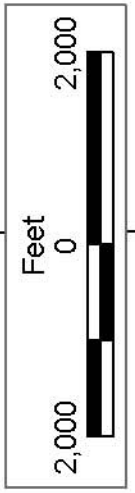
BLOCK BS0047

SL 17487

BLOCK BS0050

BLOCK
BS0048

SL 17239



TRACT 37365 - Portion of Block 50, Breton Sound Area, Plaquemines Parish, Louisiana

All of the lands now or formerly constituting the beds and bottoms of all water bodies of every nature and description the title of which vests in the State of Louisiana, together with all islands arising therein and other lands formed by accretion or by reliction, where allowed by law, excepting tax adjudicated lands, and not presently under mineral lease on May 11, 2005, situated in Plaquemines Parish, Louisiana, and more particularly described as follows: Beginning at a point on the East line of Block 50, Breton Sound Area, having Coordinates of X = 2,664,850.00 and Y = 285,455.00; thence West 14,750.00 feet to a point on the West line of said Block 50 having Coordinates of X = 2,650,100.00 and Y = 285,455.00; thence North 7,375.00 feet along the West line of said Block 50 to its Northwest corner having Coordinates of X = 2,650,100.00 and Y = 292,830.00; thence East 8,350.00 feet along the North line of said Block 50 to the Northwest corner of State Lease No. 17487 having Coordinates of X = 2,658,450.00 and Y = 292,830.00; thence along the boundary of said State Lease No. 17487 the following courses: South 4,500.00 feet to its Southwest corner having Coordinates of X = 2,658,450.00 and Y = 288,330.00, East 2,300.00 feet to its Southeast corner having Coordinates of X = 2,660,750.00 and Y = 288,330.00; and North 4,500.00 feet to its Northeast corner, said corner also being a point on the North line of said Block 50, having Coordinates of X = 2,660,750.00 and Y = 292,830.00; thence East 4,100.00 feet along the North line of said Block 50 to its Northeast corner having Coordinates of X = 2,664,850.00 and Y = 292,830.00; thence South 7,375.00 feet along the East line of said Block 50 to the point of beginning, containing approximately **2,259.67 acres**, all as more particularly outlined on a plat on file in the Office of Mineral Resources, Department of Natural Resources. All bearings, distances and coordinates are based on Louisiana Coordinate System of 1927, (North or South Zone), where applicable.

NOTE: The above description of the Tract nominated for lease has been provided and corrected, where required, exclusively by the nomination party. Any mineral lease selected from this Tract and awarded by the Louisiana State Mineral Board shall be without warranty of any kind, either express, implied, or statutory, including, but not limited to, the implied warranties of merchantability and fitness for a particular purpose. Should the mineral lease awarded by the Louisiana State Mineral Board be subsequently modified, cancelled or abrogated due to the existence of conflicting leases, operating agreements, private claims or other future obligations or conditions which may affect all or any portion of the leased Tract, it shall not relieve the Lessee of the obligation to pay any bonus due thereon to the Louisiana State Mineral Board, nor shall the Louisiana State Mineral Board be obligated to refund any consideration paid by the Lessor prior to such modification, cancellation, or abrogation, including, but not limited to, bonuses, rentals and royalties.

NOTE: The State of Louisiana does hereby reserve, and this lease shall be subject to, the imprescriptible right of surface use in the nature of a servitude in favor of the Department of Natural Resources, including its Offices and Commissions, for the sole purpose of implementing, constructing, servicing and maintaining approved coastal zone management and/or restoration projects. Utilization of any and all rights derived under this lease by the mineral lessee, its agents, successors or assigns, shall not interfere with nor hinder the reasonable surface use by the Department of Natural Resources, its Offices or Commissions, as herein above reserved.

Applicant: Fleetwood Resources, Inc.

Bidder	Cash Payment	Price/Acre	Rental	Oil	Gas	Other

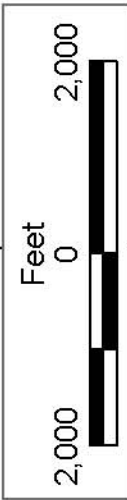


SL 16569

BLOCK
BS0046

BLOCK
BS0051

P.O.B.
X=2,664,850.00
Y=285,455.00



BLOCK BS0047

SL 17487

BLOCK BS0050

PLAQUEMINES PARISH

BRETON SOUND AREA

BLOCK BS0050

BLOCK
BS0048

SL 17239

BLOCK
BS0049

TRACT 37366 - Portion of Block 51, Breton Sound Area, Plaquemines Parish, Louisiana

All of the lands now or formerly constituting the beds and bottoms of all water bodies of every nature and description the title of which vests in the State of Louisiana, together with all islands arising therein and other lands formed by accretion or by reliction, where allowed by law, excepting tax adjudicated lands, and not presently under mineral lease on May 11, 2005, situated in Plaquemines Parish, Louisiana, and more particularly described as follows: Beginning at a point on the West line of Block 51, Breton Sound Area, having Coordinates of X = 2,664,850.00 and Y = 285,455.00; thence North 7,375.00 feet along the West line of said Block 51 to its Northwest corner having Coordinates of X = 2,664,850.00 and Y = 292,830.00; thence East 13,316.42 feet along the North line of said Block 51 to a point having Coordinates of X = 2,678,166.42 and Y = 292,830.00; thence Southeasterly on a straight line to a point having Coordinates of X = 2,678,954.54 and Y = 285,455.69; thence West 3,667.65 feet to a point on the East line of State Lease No. 17243, having Coordinates of X = 2,675,286.89 and Y = 285,455.69; thence along the boundary of said State Lease No. 17243 the following courses: North 39 degrees 23 minutes 04 seconds East 781.87 feet to its most Easterly Southeast corner having Coordinates of X = 2,675,783.00 and Y = 286,060.00, North 1,332.00 feet to its Northeast corner having Coordinates of X = 2,675,783.00 and Y = 287,392.00 and West 1,601.14 feet to its Northwest corner, said corner also being a point on the East line of State Lease No. 16890, having Coordinates of X = 2,674,181.86 and Y = 287,392.00; thence along the boundary of said State Lease No. 16890 the following courses: North 01 degrees 37 minutes 30 seconds West 738.30 feet to its Northeast corner having Coordinates of X = 2,674,160.92 and Y = 288,130.00, West 1,289.48 feet to its most Northerly Northwest corner having Coordinates of X = 2,672,871.44 and Y = 288,130.00; South 73 degrees 14 minutes 31 seconds West 2,393.07 feet to its most Westerly Northwest corner having Coordinates of X = 2,670,580.00 and Y = 287,440.00 and South 05 degrees 15 minutes 21 seconds East 1,993.38 feet to a point on the Northern boundary of State Lease No. 17245, having Coordinates of X = 2,670,762.60 and Y = 285,455.00; thence West 1,776.59 feet along the Northern boundary of said State Lease No. 17245 to its Northwest corner having Coordinates of X = 2,668,986.01 and Y = 285,455.00; thence West 4,136.01 feet to the point of beginning, containing approximately **2,054.77 acres**, all as more particularly outlined on a plat on file in the Office of Mineral Resources, Department of Natural Resources. All bearings, distances and coordinates are based on Louisiana Coordinate System of 1927, (North or South Zone), where applicable.

NOTE: The above description of the Tract nominated for lease has been provided and corrected, where required, exclusively by the nomination party. Any mineral lease selected from this Tract and awarded by the Louisiana State Mineral Board shall be without warranty of any kind, either express, implied, or statutory, including, but not limited to, the implied warranties of merchantability and fitness for a particular

purpose. Should the mineral lease awarded by the Louisiana State Mineral Board be subsequently modified, cancelled or abrogated due to the existence of conflicting leases, operating agreements, private claims or other future obligations or conditions which may affect all or any portion of the leased Tract, it shall not relieve the Lessee of the obligation to pay any bonus due thereon to the Louisiana State Mineral Board, nor shall the Louisiana State Mineral Board be obligated to refund any consideration paid by the Lessor prior to such modification, cancellation, or abrogation, including, but not limited to, bonuses, rentals and royalties.

NOTE: The State of Louisiana does hereby reserve, and this lease shall be subject to, the imprescriptible right of surface use in the nature of a servitude in favor of the Department of Natural Resources, including its Offices and Commissions, for the sole purpose of implementing, constructing, servicing and maintaining approved coastal zone management and/or restoration projects. Utilization of any and all rights derived under this lease by the mineral lessee, its agents, successors or assigns, shall not interfere with nor hinder the reasonable surface use by the Department of Natural Resources, its Offices or Commissions, as herein above reserved.

Applicant: Fleetwood Resources, Inc.

Bidder	Cash Payment	Price/Acre	Rental	Oil	Gas	Other



BLOCK
BS0045

BLOCK
BS0052

BLOCK
BS0046

BLOCK
BS0051

PLAQUEMINES PARISH

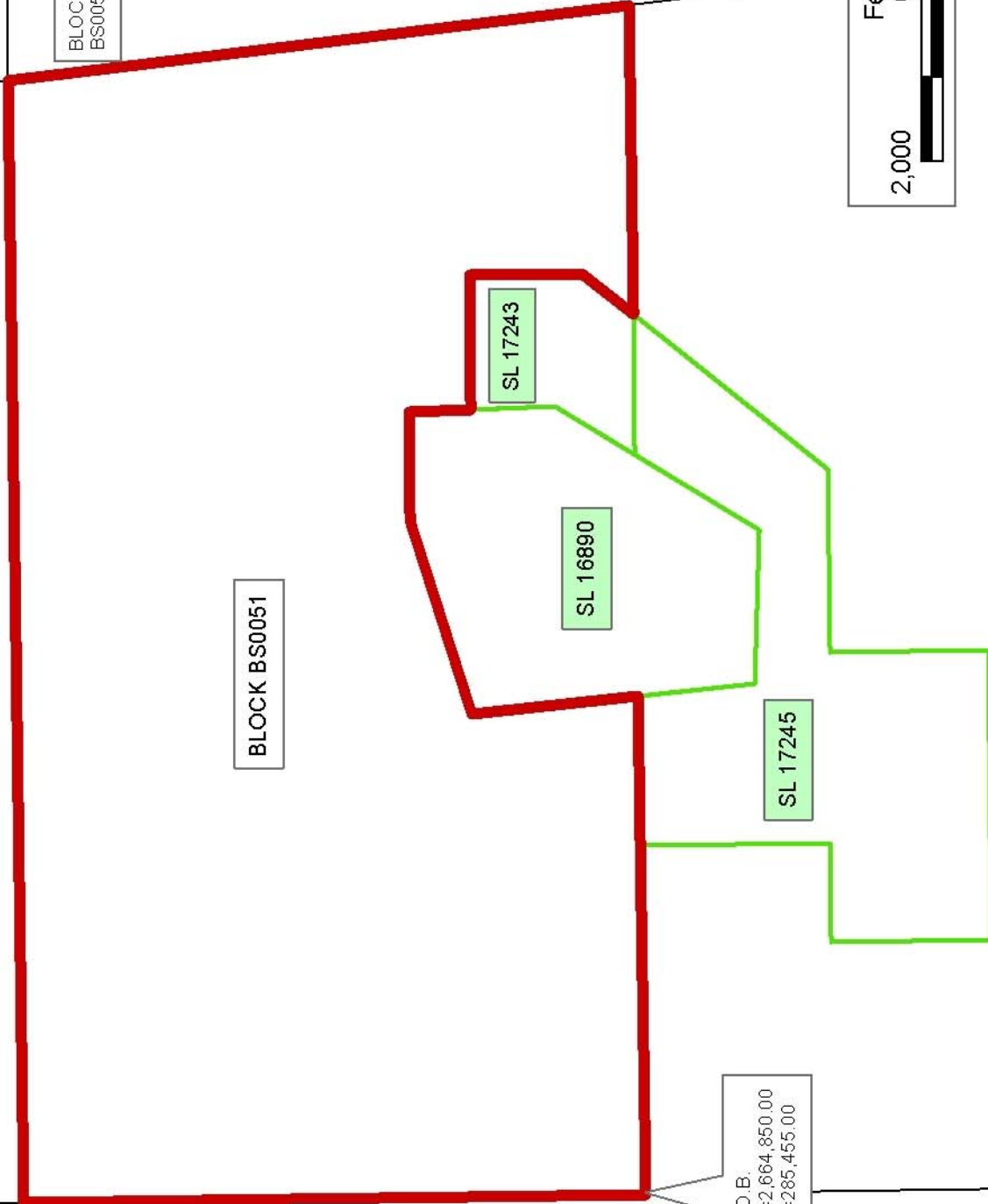
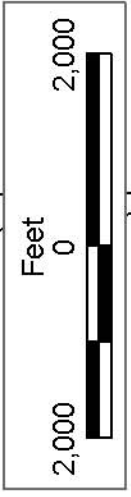
BRETON SOUND AREA

BLOCK BS0046

BLOCK BS0051

BLOCK
BS0047

BLOCK
BS0050



P.O.B.
X=2,664,850.00
Y=285,455.00