

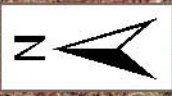
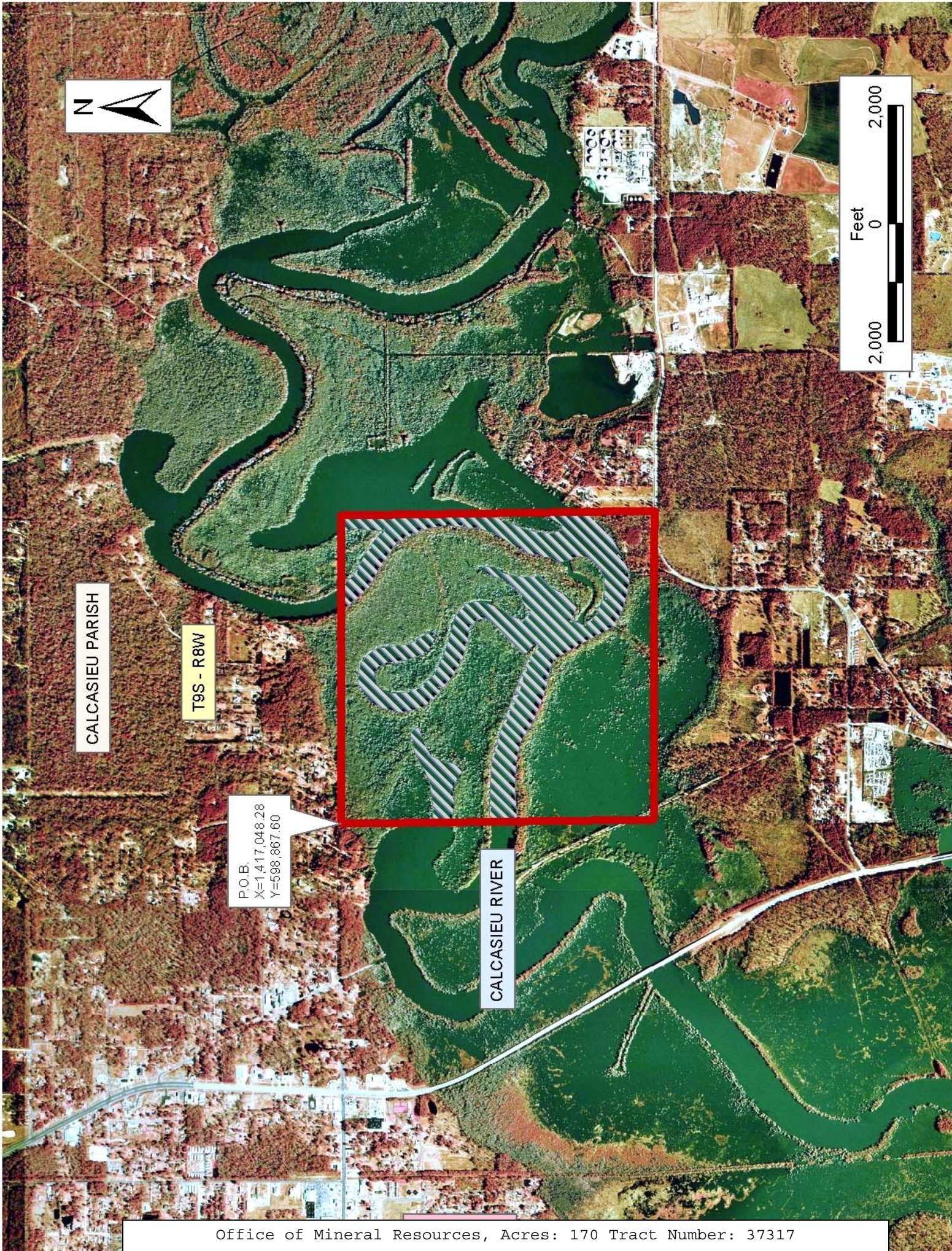
**TRACT 37317 - Calcasieu Parish, Louisiana**

All of the lands now or formerly constituting the beds and bottoms of all water bodies of every nature and description the title of which vests in the State of Louisiana, together with all islands arising therein and other lands formed by accretion or by reliction, where allowed by law, excepting tax adjudicated lands, and not presently under mineral lease on May 11, 2005, situated in Calcasieu Parish, Louisiana, and more particularly described as follows: Beginning at a point having Coordinates of X = 1,417,048.28 and Y = 598,867.60; thence South 89 degrees 09 minutes 34 seconds East 5,230.47 feet to a point having Coordinates of X = 1,422,278.19 and Y = 598,790.87; thence South 5,321.48 feet to a point having Coordinates of X = 1,422,278.19 and Y = 593,469.39; thence North 89 degrees 04 minutes 28 seconds West 5,249.62 feet to a point having Coordinates of X = 1,417,029.26 and Y = 593,554.18; thence North 00 degrees 12 minutes 18 seconds East 5,313.45 feet to the point of beginning, containing approximately **170 acres**, all as more particularly outlined on a plat on file in the Office of Mineral Resources, Department of Natural Resources. All bearings, distances and coordinates are based on Louisiana Coordinate System of 1927, (North or South Zone), where applicable.

NOTE: The above description of the Tract nominated for lease has been provided and corrected, where required, exclusively by the nomination party. Any mineral lease selected from this Tract and awarded by the Louisiana State Mineral Board shall be without warranty of any kind, either express, implied, or statutory, including, but not limited to, the implied warranties of merchantability and fitness for a particular purpose. Should the mineral lease awarded by the Louisiana State Mineral Board be subsequently modified, cancelled or abrogated due to the existence of conflicting leases, operating agreements, private claims or other future obligations or conditions which may affect all or any portion of the leased Tract, it shall not relieve the Lessee of the obligation to pay any bonus due thereon to the Louisiana State Mineral Board, nor shall the Louisiana State Mineral Board be obligated to refund any consideration paid by the Lessor prior to such modification, cancellation, or abrogation, including, but not limited to, bonuses, rentals and royalties.

Applicant: Theophilus Oil, Gas & Land Services LLC

Bidder	Cash Payment	Price/Acre	Rental	Oil	Gas	Other



CALCASIEU PARISH

T9S - R8W

P.O.B.  
X=1,417,048.28  
Y=598,867.60

CALCASIEU RIVER

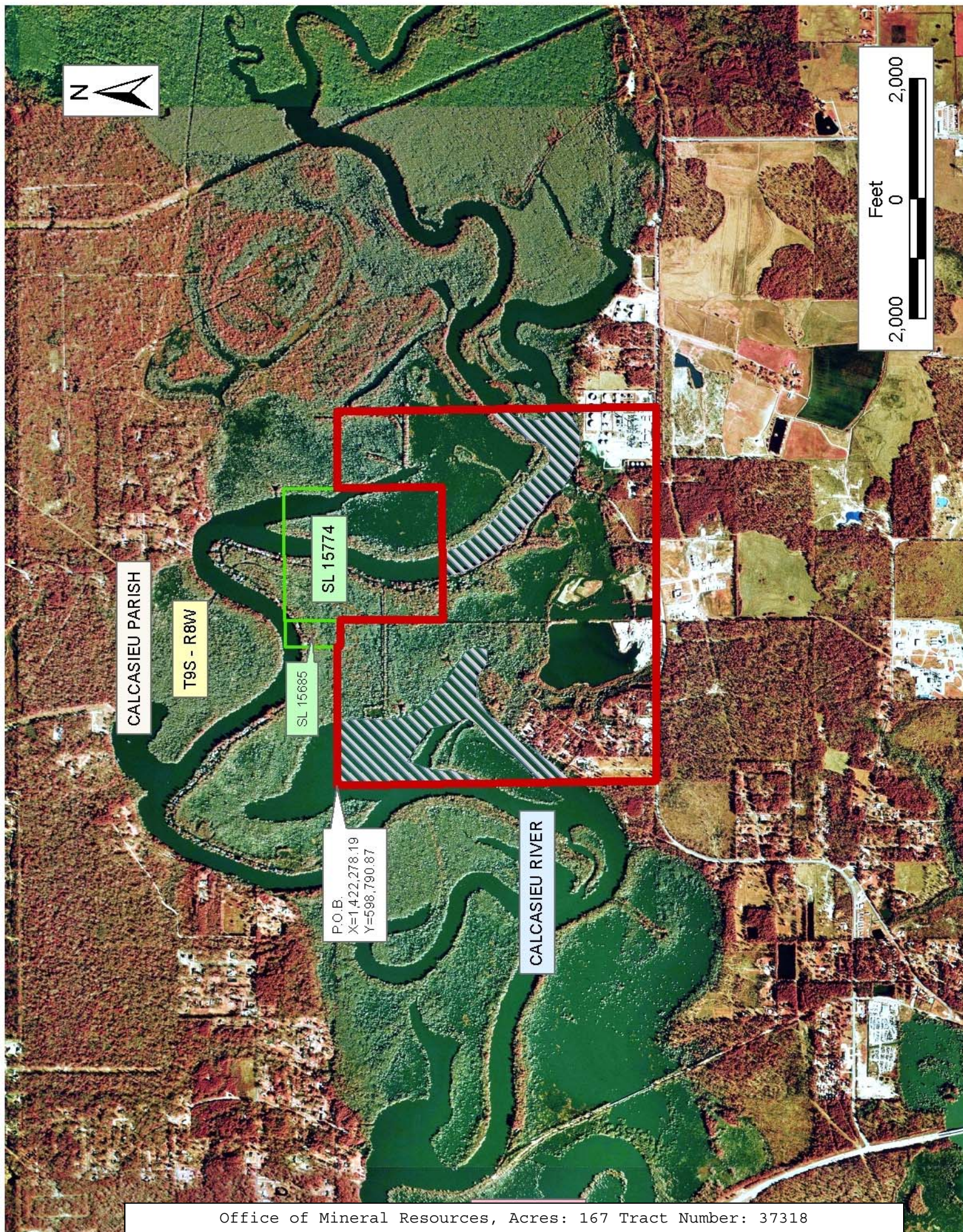
**TRACT 37318 - Calcasieu Parish, Louisiana**

All of the lands now or formerly constituting the beds and bottoms of all water bodies of every nature and description the title of which vests in the State of Louisiana, together with all islands arising therein and other lands formed by accretion or by reliction, where allowed by law, excepting tax adjudicated lands, and not presently under mineral lease on May 11, 2005, situated in Calcasieu Parish, Louisiana, and more particularly described as follows: Beginning at a point having Coordinates of X = 1,422,278.19 and Y = 598,790.87; thence South 89 degrees 09 minutes 34 East 2,314.39 feet to a point on the West boundary of State Lease No. 15685, as amended, having Coordinates of X = 1,424,592.33 and Y = 598,756.92; thence along the West and South boundary of said State Lease No. 15685 the following: South 56.92 feet and East 438.71 feet to its Southeast corner located on the West boundary of State Lease No. 15774, as amended having X = 1,425,031.04 and Y = 598,700.00; thence along the boundary of said State Lease No. 15774 the following: South 1,723.63 feet, East 2,201.29 feet and North 1,741.82 feet to a point having Coordinates of X = 1,427,232.33 and Y = 598,718.19; thence South 89 degrees 09 minutes 34 seconds East 1,290.75 feet to a point having Coordinates of X = 1,428,522.94 and Y = 598,699.26; thence South 5,325.17 feet to a point having Coordinates of X = 1,428,522.94 and Y = 593,374.09; thence North 89 degrees 07 minutes 33 seconds West 6,245.48 feet to a point having Coordinates of X = 1,422,278.19 and Y = 593,469.39; thence North 5,321.48 feet to the point of beginning, containing approximately **167 acres**, all as more particularly outlined on a plat on file in the Office of Mineral Resources, Department of Natural Resources. All bearings, distances and coordinates are based on Louisiana Coordinate System of 1927, (North or South Zone), where applicable.

NOTE: The above description of the Tract nominated for lease has been provided and corrected, where required, exclusively by the nomination party. Any mineral lease selected from this Tract and awarded by the Louisiana State Mineral Board shall be without warranty of any kind, either express, implied, or statutory, including, but not limited to, the implied warranties of merchantability and fitness for a particular purpose. Should the mineral lease awarded by the Louisiana State Mineral Board be subsequently modified, cancelled or abrogated due to the existence of conflicting leases, operating agreements, private claims or other future obligations or conditions which may affect all or any portion of the leased Tract, it shall not relieve the Lessee of the obligation to pay any bonus due thereon to the Louisiana State Mineral Board, nor shall the Louisiana State Mineral Board be obligated to refund any consideration paid by the Lessor prior to such modification, cancellation, or abrogation, including, but not limited to, bonuses, rentals and royalties.

Applicant: Theophilus Oil, Gas & Land Services LLC

Bidder	Cash Payment	Price/ Acre	Rental	Oil	Gas	Other



**TRACT 37319 - Portion of Block 16, Lake Maurepas Area, Livingston Parish, Louisiana**

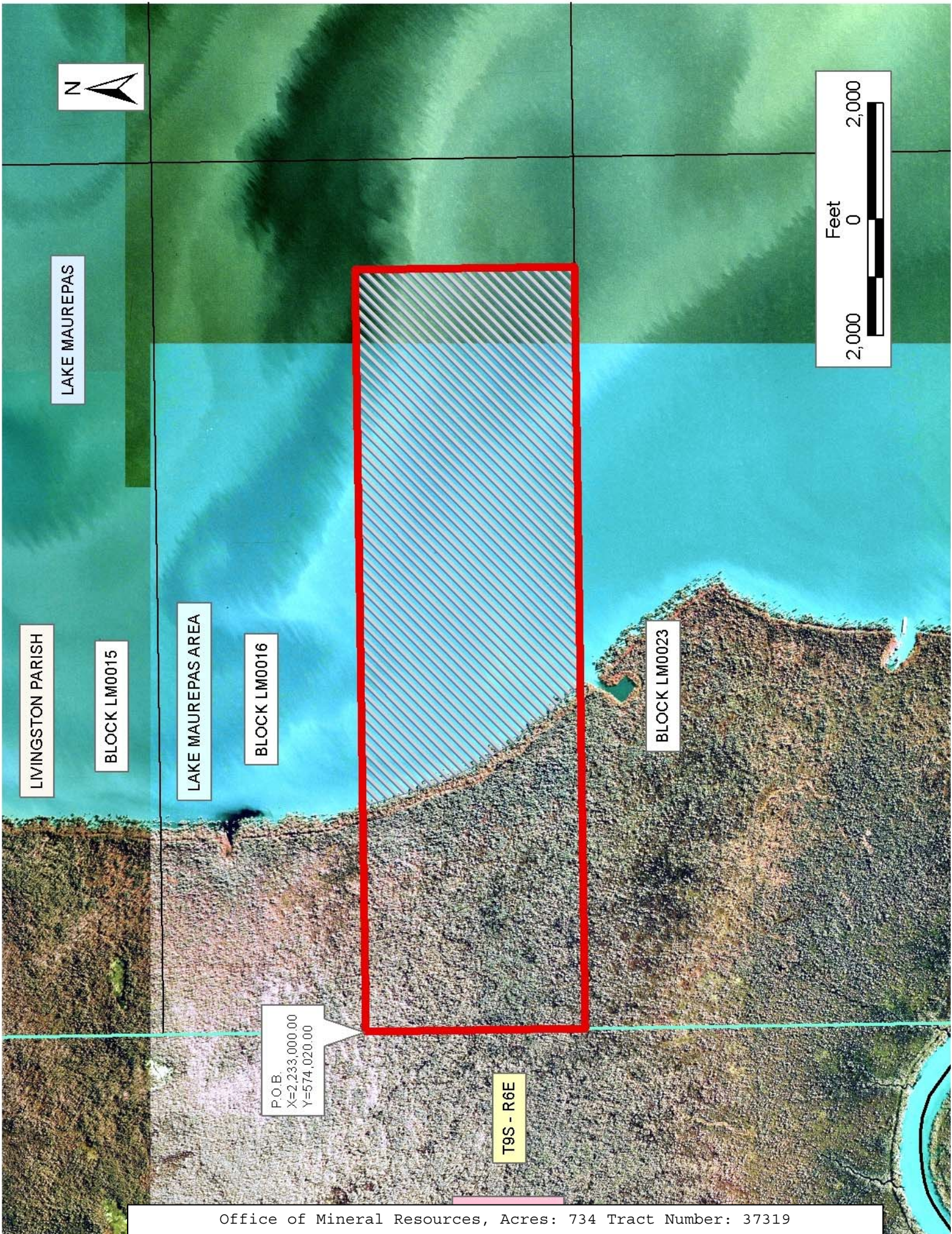
All of the lands now or formerly constituting the beds and bottoms of all water bodies of every nature and description the title of which vests in the State of Louisiana, together with all islands arising therein and other lands formed by accretion or by reliction, where allowed by law, excepting tax adjudicated lands, and not presently under mineral lease on May 11, 2005, situated in Livingston Parish, Louisiana, and more particularly described as follows: Beginning at a point on the West line of Block 16, Lake Maurepas Area, having Coordinates of X = 2,233,000.00 and Y = 574,020.00; thence East 13,110.00 feet to a point having Coordinates of X = 2,246,110.00 and Y = 574,020.00; thence South 3,780.00 feet to a point on the South line of said Block 16, having Coordinates of X = 2,246,110.00 and Y = 570,240.00; thence West 13,110.00 on said South line of said Block 16 to its Southwest corner having Coordinates of X = 2,233,000.00 and Y = 570,240.00; thence North 3,780.00 feet on the West line of said Block 16 to the point of beginning, containing approximately **734 acres**, all as more particularly outlined on a plat on file in the Office of Mineral Resources, Department of Natural Resources. All bearings, distances and coordinates are based on Louisiana Coordinate System of 1927, (North or South Zone), where applicable.

NOTE: The above description of the Tract nominated for lease has been provided and corrected, where required, exclusively by the nomination party. Any mineral lease selected from this Tract and awarded by the Louisiana State Mineral Board shall be without warranty of any kind, either express, implied, or statutory, including, but not limited to, the implied warranties of merchantability and fitness for a particular purpose. Should the mineral lease awarded by the Louisiana State Mineral Board be subsequently modified, cancelled or abrogated due to the existence of conflicting leases, operating agreements, private claims or other future obligations or conditions which may affect all or any portion of the leased Tract, it shall not relieve the Lessee of the obligation to pay any bonus due thereon to the Louisiana State Mineral Board, nor shall the Louisiana State Mineral Board be obligated to refund any consideration paid by the Lessor prior to such modification, cancellation, or abrogation, including, but not limited to, bonuses, rentals and royalties.

NOTE: The State of Louisiana does hereby reserve, and this lease shall be subject to, the imprescriptible right of surface use in the nature of a servitude in favor of the Department of Natural Resources, including its Offices and Commissions, for the sole purpose of implementing, constructing, servicing and maintaining approved coastal zone management and/or restoration projects. Utilization of any and all rights derived under this lease by the mineral lessee, its agents, successors or assigns, shall not interfere with nor hinder the reasonable surface use by the Department of Natural Resources, its Offices or Commissions, as herein above reserved.

Applicant: Kenneth S. Hill Properties, Inc.

Bidder	Cash Payment	Price/ Acre	Rental	Oil	Gas	Other



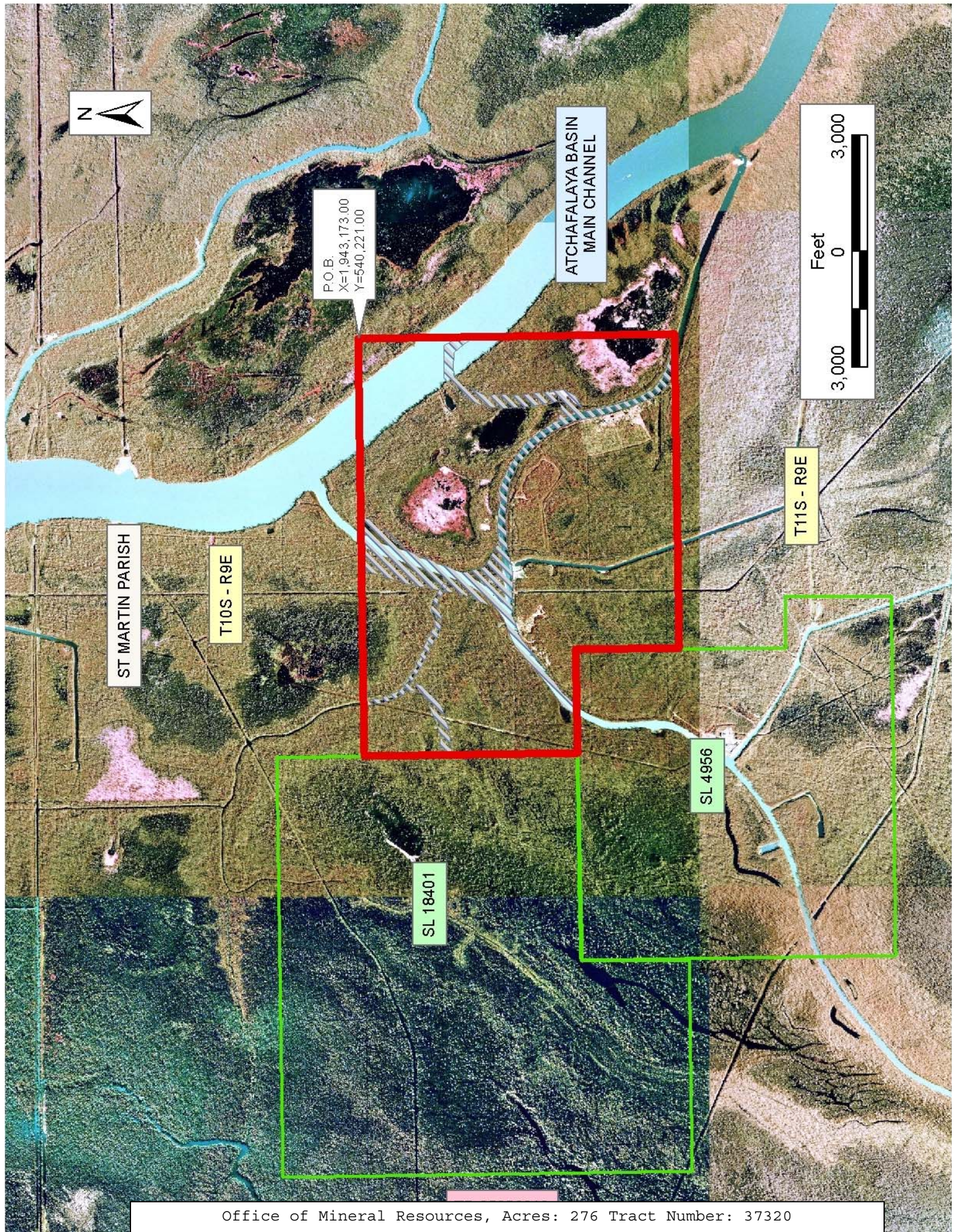
**TRACT 37320 - St. Martin Parish, Louisiana**

All of the lands now or formerly constituting the beds and bottoms of all water bodies of every nature and description the title of which vests in the State of Louisiana, together with all islands arising therein and other lands formed by accretion or by reliction, where allowed by law, excepting tax adjudicated lands, and not presently under mineral lease on May 11, 2005, situated in St. Martin Parish, Louisiana, and more particularly described as follows: Beginning at a point having Coordinates of X = 1,943,173.00 and Y = 540,221.00; thence South 8,185.00 feet to a point having Coordinates of X = 1,943,173.00 and Y = 532,036.00; thence West approximately 8,129 feet to a point on the boundary of State Lease No. 4956 having a Coordinate of Y = 532,036.00; thence Northerly and Westerly on the boundary of said State Lease No. 4956 to the Southeast corner of State Lease No. 18401 having a Coordinate of X = 1,932,365.49; thence North approximately 5,523 feet on the East line of said State Lease No. 18401 to a point having Coordinates of X = 1,932,365.49 and Y = 540,221.00; thence East 10,807.51 feet to the point of beginning, **LESS AND EXCEPT** those portions, if any, of State Lease No. 18401 and State Lease No. 4956, that may lie within the above described tract, containing approximately **276 acres**, all as more particularly outlined on a plat on file in the Office of Mineral Resources, Department of Natural Resources. All bearings, distances and coordinates are based on Louisiana Coordinate System of 1927, (North or South Zone), where applicable.

NOTE: The above description of the Tract nominated for lease has been provided and corrected, where required, exclusively by the nomination party. Any mineral lease selected from this Tract and awarded by the Louisiana State Mineral Board shall be without warranty of any kind, either express, implied, or statutory, including, but not limited to, the implied warranties of merchantability and fitness for a particular purpose. Should the mineral lease awarded by the Louisiana State Mineral Board be subsequently modified, cancelled or abrogated due to the existence of conflicting leases, operating agreements, private claims or other future obligations or conditions which may affect all or any portion of the leased Tract, it shall not relieve the Lessee of the obligation to pay any bonus due thereon to the Louisiana State Mineral Board, nor shall the Louisiana State Mineral Board be obligated to refund any consideration paid by the Lessor prior to such modification, cancellation, or abrogation, including, but not limited to, bonuses, rentals and royalties.

Applicant: Land Resources, Inc.

Bidder	Cash Payment	Price/ Acre	Rental	Oil	Gas	Other



**TRACT 37321 - Portion of Block 21, North Lake Borgne Area, St. Bernard Parish, Louisiana**

All of the lands now or formerly constituting the beds and bottoms of all water bodies of every nature and description the title of which vests in the State of Louisiana, together with all islands arising therein and other lands formed by accretion or by reliction, where allowed by law, excepting tax adjudicated lands, and not presently under mineral lease on May 11, 2005, situated in St. Bernard Parish, Louisiana, and more particularly described as follows: Beginning at the Southeast corner of Block 21, North Lake Borgne Area, having Coordinates of X = 2,554,250.00 and Y = 520,958.70; thence West 18,000.00 feet along the South line of said Block 21 to its Southwest corner having Coordinates of X = 2,536,250.00 and Y = 520,958.70; thence North 6,050.00 feet along the West line of said Block 21 to a point having Coordinates of X = 2,536,250.00 and Y = 527,008.70; thence East 18,000.00 feet to a point on the East line of said Block 21 having Coordinates of X = 2,554,250.00 and Y = 527,008.70; thence South 6,050.00 feet along said East line to the Point of Beginning, containing approximately **2,500.00 acres**, all as more particularly outlined on a plat on file in the Office of Mineral Resources, Department of Natural Resources. All bearings, distances and coordinates are based on Louisiana Coordinate System of 1927, (North or South Zone), where applicable.

NOTE: The above description of the Tract nominated for lease has been provided and corrected, where required, exclusively by the nomination party. Any mineral lease selected from this Tract and awarded by the Louisiana State Mineral Board shall be without warranty of any kind, either express, implied, or statutory, including, but not limited to, the implied warranties of merchantability and fitness for a particular purpose. Should the mineral lease awarded by the Louisiana State Mineral Board be subsequently modified, cancelled or abrogated due to the existence of conflicting leases, operating agreements, private claims or other future obligations or conditions which may affect all or any portion of the leased Tract, it shall not relieve the Lessee of the obligation to pay any bonus due thereon to the Louisiana State Mineral Board, nor shall the Louisiana State Mineral Board be obligated to refund any consideration paid by the Lessor prior to such modification, cancellation, or abrogation, including, but not limited to, bonuses, rentals and royalties.

NOTE: The Office of Mineral Resources will require a minimum bonus of \$230 per acre and a minimum royalty of 23%.

NOTE: The State of Louisiana does hereby reserve, and this lease shall be subject to, the imprescriptible right of surface use in the nature of a servitude in favor of the Department of Natural Resources, including its Offices and Commissions, for the sole purpose of implementing, constructing, servicing and maintaining approved coastal zone management and/or restoration projects. Utilization of any and all rights derived under this lease by the mineral lessee, its agents, successors or assigns,

shall not interfere with nor hinder the reasonable surface use by the Department of Natural Resources, its Offices or Commissions, as herein above reserved.

NOTE: The Department of Wildlife and Fisheries has designated certain areas in the coastal waters of the State of Louisiana as Oyster Seed Bed Areas. The exact location of those Seed Bed Areas must be obtained from the Department of Wildlife and Fisheries and any work done under a mineral lease from the State of Louisiana may necessarily be conducted in conformity with the rules and regulations promulgated by the said Department of Wildlife and Fisheries for Oyster Seed Bed Areas.

Applicant: Leslie M. Cooper

Bidder	Cash Payment	Price/ Acre	Rental	Oil	Gas	Other



BLOCK LB0003

BLOCK LB0004

ST BERNARD PARISH

BLOCK LB0022

NORTH LAKE BORGNE AREA

BLOCK LB0021

BLOCK LB0027

BLOCK LB0028

P.O.B.  
X=2,554,250.00  
Y=520,958.70

Feet  
0  
3,000 3,000

SL 18062

SL 18061

SL 18063

SL 18064

SL 17656

**TRACT 37322 - Portion of Block 4, North Lake Borgne Area, St. Bernard Parish, Louisiana**

All of the lands now or formerly constituting the beds and bottoms of all water bodies of every nature and description the title of which vests in the State of Louisiana, together with all islands arising therein and other lands formed by accretion or by reliction, where allowed by law, excepting tax adjudicated lands, and not presently under mineral lease on May 11, 2005, situated in St. Bernard Parish, Louisiana, and more particularly described as follows: Beginning at the Southwest corner of Block 4, North Lake Borgne Area, having Coordinates of X = 2,554,250.00 and Y = 520,958.70; thence North 6,050.00 feet along the West line of said Block 4 to a point having Coordinates of X = 2,554,250.00 and Y = 527,008.70; thence East 18,000.00 feet to a point on the East line of said Block 4 having Coordinates of X = 2,572,250.00 and Y = 527,008.70; thence South 6,050.00 feet along said East line to its Southeast corner having Coordinates of X = 2,572,250.00 and Y = 520,958.70; thence West 18,000.00 feet along the South line of said Block 4 to the Point of Beginning, containing approximately **2,500.00 acres**, all as more particularly outlined on a plat on file in the Office of Mineral Resources, Department of Natural Resources. All bearings, distances and coordinates are based on Louisiana Coordinate System of 1927, (North or South Zone), where applicable.

NOTE: The above description of the Tract nominated for lease has been provided and corrected, where required, exclusively by the nomination party. Any mineral lease selected from this Tract and awarded by the Louisiana State Mineral Board shall be without warranty of any kind, either express, implied, or statutory, including, but not limited to, the implied warranties of merchantability and fitness for a particular purpose. Should the mineral lease awarded by the Louisiana State Mineral Board be subsequently modified, cancelled or abrogated due to the existence of conflicting leases, operating agreements, private claims or other future obligations or conditions which may affect all or any portion of the leased Tract, it shall not relieve the Lessee of the obligation to pay any bonus due thereon to the Louisiana State Mineral Board, nor shall the Louisiana State Mineral Board be obligated to refund any consideration paid by the Lessor prior to such modification, cancellation, or abrogation, including, but not limited to, bonuses, rentals and royalties.

NOTE: The Office of Mineral Resources will require a minimum bonus of \$230 per acre and a minimum royalty of 23%.

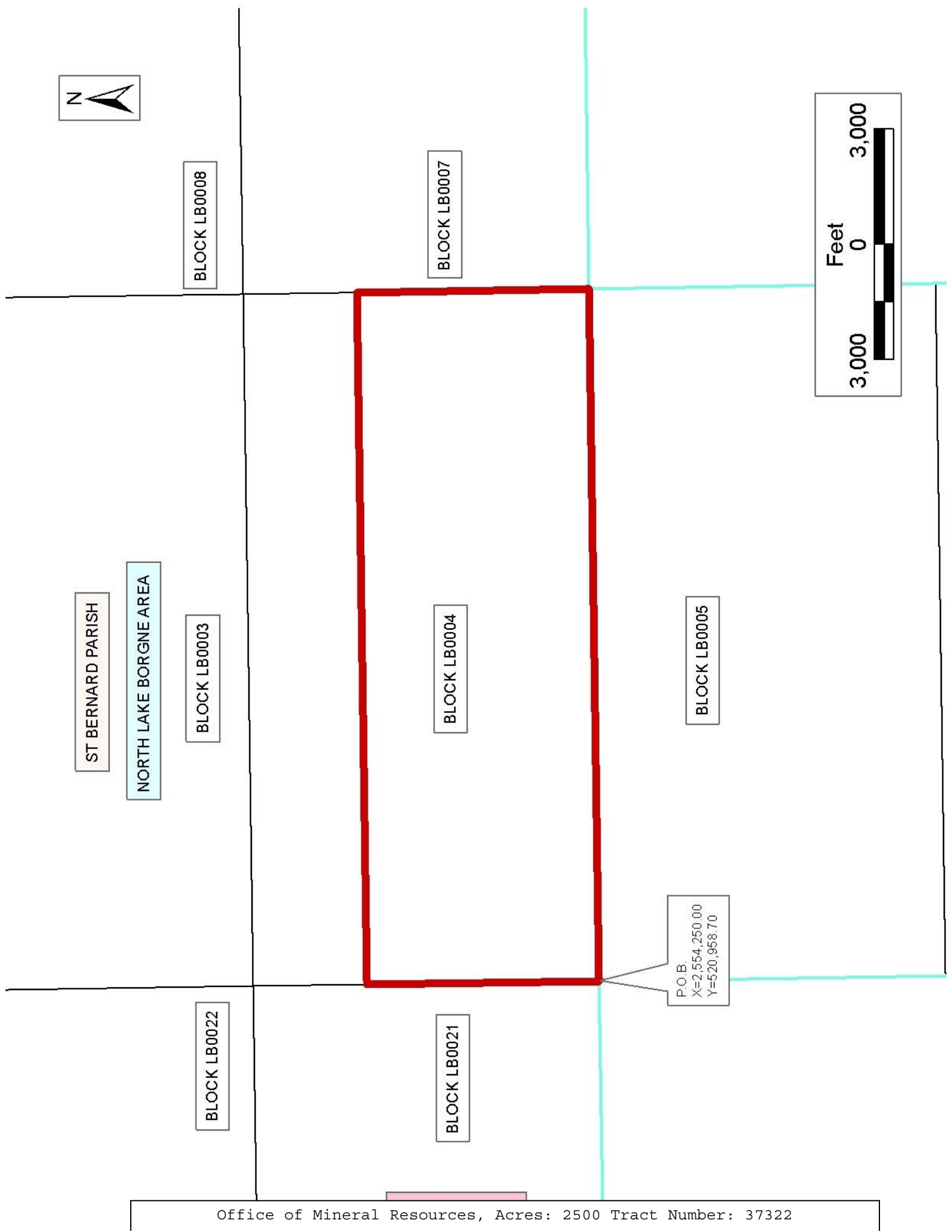
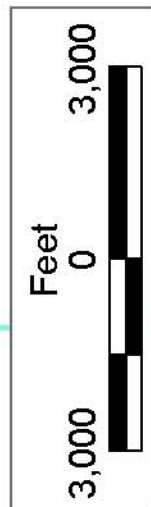
NOTE: The State of Louisiana does hereby reserve, and this lease shall be subject to, the imprescriptible right of surface use in the nature of a servitude in favor of the Department of Natural Resources, including its Offices and Commissions, for the sole purpose of implementing, constructing, servicing and maintaining approved coastal zone management and/or restoration projects. Utilization of any and all rights derived under this lease by the mineral lessee, its agents, successors or assigns,

shall not interfere with nor hinder the reasonable surface use by the Department of Natural Resources, its Offices or Commissions, as herein above reserved.

NOTE: The Department of Wildlife and Fisheries has designated certain areas in the coastal waters of the State of Louisiana as Oyster Seed Bed Areas. The exact location of those Seed Bed Areas must be obtained from the Department of Wildlife and Fisheries and any work done under a mineral lease from the State of Louisiana may necessarily be conducted in conformity with the rules and regulations promulgated by the said Department of Wildlife and Fisheries for Oyster Seed Bed Areas.

Applicant: Leslie M. Cooper

Bidder	Cash Payment	Price/ Acre	Rental	Oil	Gas	Other



**TRACT 37323 - Orleans and St. Bernard Parishes, Louisiana**

All of the lands now or formerly constituting the beds and bottoms of all water bodies of every nature and description the title of which vests in the State of Louisiana, together with all islands arising therein and other lands formed by accretion or by reliction, where allowed by law, excepting tax adjudicated lands, and not presently under mineral lease on May 11, 2005, situated in Orleans and St. Bernard Parishes, Louisiana, and more particularly described as follows: Beginning at a point having Coordinates of X = 2,536,250.00 and Y = 515,058.70; thence West 16,145.73 feet to a point having Coordinates of X = 2,520,104.27 and Y = 515,058.70; thence North 14 degrees 31 minutes 56 seconds East 6,095.00 feet to a point having Coordinates of X = 2,521,633.65 and Y = 520,958.70; thence East 14,616.35 feet to a point having Coordinates of X = 2,536,250.00 and Y = 520,958.70; thence South 5,900.00 feet to the Point of Beginning, containing approximately **2,020.00 acres**, all as more particularly outlined on a plat on file in the Office of Mineral Resources, Department of Natural Resources. All bearings, distances and coordinates are based on Louisiana Coordinate System of 1927, (North or South Zone), where applicable.

NOTE: The above description of the Tract nominated for lease has been provided and corrected, where required, exclusively by the nomination party. Any mineral lease selected from this Tract and awarded by the Louisiana State Mineral Board shall be without warranty of any kind, either express, implied, or statutory, including, but not limited to, the implied warranties of merchantability and fitness for a particular purpose. Should the mineral lease awarded by the Louisiana State Mineral Board be subsequently modified, cancelled or abrogated due to the existence of conflicting leases, operating agreements, private claims or other future obligations or conditions which may affect all or any portion of the leased Tract, it shall not relieve the Lessee of the obligation to pay any bonus due thereon to the Louisiana State Mineral Board, nor shall the Louisiana State Mineral Board be obligated to refund any consideration paid by the Lessor prior to such modification, cancellation, or abrogation, including, but not limited to, bonuses, rentals and royalties.

NOTE: The Office of Mineral Resources will require a minimum bonus of \$230 per acre and a minimum royalty of 23%.

NOTE: The State of Louisiana does hereby reserve, and this lease shall be subject to, the imprescriptible right of surface use in the nature of a servitude in favor of the Department of Natural Resources, including its Offices and Commissions, for the sole purpose of implementing, constructing, servicing and maintaining approved coastal zone management and/or restoration projects. Utilization of any and all rights derived under this lease by the mineral lessee, its agents, successors or assigns, shall not interfere with nor hinder the reasonable surface use by the Department of Natural Resources, its Offices or Commissions, as herein above reserved.

NOTE: The Department of Wildlife and Fisheries has designated certain areas in the coastal waters of the State of Louisiana as Oyster Seed Bed Areas. The exact location of those Seed Bed Areas must be obtained from the Department of Wildlife and Fisheries and any work done under a mineral lease from the State of Louisiana may necessarily be conducted in conformity with the rules and regulations promulgated by the said Department of Wildlife and Fisheries for Oyster Seed Bed Areas.

Applicant: Leslie M. Cooper

Bidder	Cash Payment	Price/ Acre	Rental	Oil	Gas	Other



BLOCK LB0021

BLOCK LB0028

NORTH LAKE BORGNE AREA

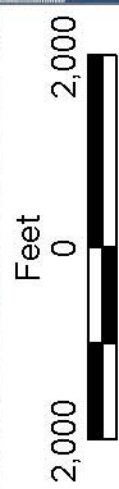
ST BERNARD PARISH

SL 17656

ORLEANS PARISH

T11S - R15E

P.O.B.  
X=2,536,250.00  
Y=515,058.70



**TRACT 37324 - St. Bernard Parish, Louisiana**

All of the lands now or formerly constituting the beds and bottoms of all water bodies of every nature and description the title of which vests in the State of Louisiana, together with all islands arising therein and other lands formed by accretion or by reliction, where allowed by law, excepting tax adjudicated lands, and not presently under mineral lease on May 11, 2005, situated in St. Bernard Parish, Louisiana, and more particularly described as follows: Beginning at a point having Coordinates of X = 2,554,250.00 and Y = 520,958.70; thence South 5,900.00 feet to a point having Coordinates of X = 2,554,250.00 and Y = 515,058.70; thence West 12,087.00 feet to the Southeast corner of State Lease No. 18061 having Coordinates of X = 2,542,163.00 and Y = 515,058.70; thence along the boundary of said State Lease 18061 the following: North 50 degrees 23 minutes 54 seconds East 2,643.76 feet, South 73 degrees 19 minutes 25 seconds West 1,326.24 feet, North 82 degrees 48 minutes 34 seconds West 2,437.08 feet and South 30 degrees 44 minutes 55 seconds West 1,873.03 feet to its Southwest corner having Coordinates of X = 2,539,554.00 and Y = 515,058.70; thence West 3,304.00 feet to a point having Coordinates of X = 2,536,250.00 and Y = 515,058.70; thence North 5,900.00 feet to a point having Coordinates of X = 2,536,250.00 and Y = 520,958.70; thence East 18,000.00 feet to the Point of Beginning, **LESS AND EXCEPT** all of State Lease No. 18062 more particularly described as follows: Beginning at a point having Coordinates of X = 2,542,657.00 and Y = 520,411.00; thence South 68 degrees 16 minutes 57 seconds East 1,899.85 feet, South 29 degrees 29 minutes 55 seconds West 1,049.96 feet, North 75 degrees 15 minutes 10 seconds West 1,442.87 feet, South 38 degrees 42 minutes 38 seconds West 2,103.56 feet, North 62 degrees 57 minutes 21 seconds West 527.85 feet and North 36 degrees 05 minutes 53 seconds East 3,280.90 feet to the Point of Beginning, containing approximately **2,256.20 acres**, all as more particularly outlined on a plat on file in the Office of Mineral Resources, Department of Natural Resources. All bearings, distances and coordinates are based on Louisiana Coordinate System of 1927, (North or South Zone), where applicable.

NOTE: The above description of the Tract nominated for lease has been provided and corrected, where required, exclusively by the nomination party. Any mineral lease selected from this Tract and awarded by the Louisiana State Mineral Board shall be without warranty of any kind, either express, implied, or statutory, including, but not limited to, the implied warranties of merchantability and fitness for a particular purpose. Should the mineral lease awarded by the Louisiana State Mineral Board be subsequently modified, cancelled or abrogated due to the existence of conflicting leases, operating agreements, private claims or other future obligations or conditions which may affect all or any portion of the leased Tract, it shall not relieve the Lessee of the obligation to pay any bonus due thereon to the Louisiana State Mineral Board, nor shall the Louisiana State Mineral Board be obligated to refund any consideration paid by the Lessor prior to such modification, cancellation, or abrogation, including, but not limited to, bonuses, rentals and royalties.

NOTE: The Office of Mineral Resources will require a minimum bonus of \$230 per acre and a minimum royalty of 23%.

NOTE: The State of Louisiana does hereby reserve, and this lease shall be subject to, the imprescriptible right of surface use in the nature of a servitude in favor of the Department of Natural Resources, including its Offices and Commissions, for the sole purpose of implementing, constructing, servicing and maintaining approved coastal zone management and/or restoration projects. Utilization of any and all rights derived under this lease by the mineral lessee, its agents, successors or assigns, shall not interfere with nor hinder the reasonable surface use by the Department of Natural Resources, its Offices or Commissions, as herein above reserved.

NOTE: The Department of Wildlife and Fisheries has designated certain areas in the coastal waters of the State of Louisiana as Oyster Seed Bed Areas. The exact location of those Seed Bed Areas must be obtained from the Department of Wildlife and Fisheries and any work done under a mineral lease from the State of Louisiana may necessarily be conducted in conformity with the rules and regulations promulgated by the said Department of Wildlife and Fisheries for Oyster Seed Bed Areas.

Applicant: Leslie M. Cooper

Bidder	Cash Payment	Price/ Acre	Rental	Oil	Gas	Other

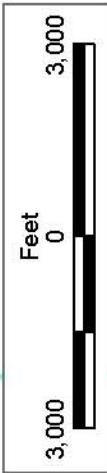


BLOCK LB0004

BLOCK LB0005

BLOCK LB0006

P.O.B.  
X=2,554,250.00  
Y=520,958.70



ST BERNARD PARISH

NORTH LAKE BORGNE AREA

BLOCK LB0021

LAKE BORGNE

SL 18062

SL 18061

SL 18064

SL 18063

BLOCK LB0028

SL 17656

**TRACT 37325 - Portion of Block 5, North Lake Borgne Area, St. Bernard Parish, Louisiana**

All of the lands now or formerly constituting the beds and bottoms of all water bodies of every nature and description the title of which vests in the State of Louisiana, together with all islands arising therein and other lands formed by accretion or by reliction, where allowed by law, excepting tax adjudicated lands, and not presently under mineral lease on May 11, 2005, situated in St. Bernard Parish, Louisiana, and more particularly described as follows: Beginning at the Northwest corner of Block 5, North Lake Borgne Area, having Coordinates of X = 2,554,250.00 and Y = 520,958.70; thence East 18,000.00 feet along the North line of said Block 5 to its Northeast corner having Coordinates of X = 2,572,250.00 and Y = 520,958.70; thence South 5,900.00 feet along the East line of said Block 5 to a point having Coordinates of X = 2,572,250.00 and Y = 515,058.70; thence West 18,000.00 feet to a point on the West line of said Block 5 having Coordinates of X = 2,554,250.00 and Y = 515,058.70; thence North 5,900.00 feet along the West line of said Block 5 to the Point of Beginning, containing approximately **2,438.02 acres**, all as more particularly outlined on a plat on file in the Office of Mineral Resources, Department of Natural Resources. All bearings, distances and coordinates are based on Louisiana Coordinate System of 1927, (North or South Zone), where applicable.

NOTE: The above description of the Tract nominated for lease has been provided and corrected, where required, exclusively by the nomination party. Any mineral lease selected from this Tract and awarded by the Louisiana State Mineral Board shall be without warranty of any kind, either express, implied, or statutory, including, but not limited to, the implied warranties of merchantability and fitness for a particular purpose. Should the mineral lease awarded by the Louisiana State Mineral Board be subsequently modified, cancelled or abrogated due to the existence of conflicting leases, operating agreements, private claims or other future obligations or conditions which may affect all or any portion of the leased Tract, it shall not relieve the Lessee of the obligation to pay any bonus due thereon to the Louisiana State Mineral Board, nor shall the Louisiana State Mineral Board be obligated to refund any consideration paid by the Lessor prior to such modification, cancellation, or abrogation, including, but not limited to, bonuses, rentals and royalties.

NOTE: The Office of Mineral Resources will require a minimum bonus of \$230 per acre and a minimum royalty of 23%.

NOTE: The State of Louisiana does hereby reserve, and this lease shall be subject to, the imprescriptible right of surface use in the nature of a servitude in favor of the Department of Natural Resources, including its Offices and Commissions, for the sole purpose of implementing, constructing, servicing and maintaining approved coastal zone management and/or restoration projects. Utilization of any and all rights derived under this lease by the mineral lessee, its agents, successors or assigns,

shall not interfere with nor hinder the reasonable surface use by the Department of Natural Resources, its Offices or Commissions, as herein above reserved.

NOTE: The Department of Wildlife and Fisheries has designated certain areas in the coastal waters of the State of Louisiana as Oyster Seed Bed Areas. The exact location of those Seed Bed Areas must be obtained from the Department of Wildlife and Fisheries and any work done under a mineral lease from the State of Louisiana may necessarily be conducted in conformity with the rules and regulations promulgated by the said Department of Wildlife and Fisheries for Oyster Seed Bed Areas.

Applicant: Leslie M. Cooper

Bidder	Cash Payment	Price/ Acre	Rental	Oil	Gas	Other



BLOCK LB0007

ST BERNARD PARISH

NORTH LAKE BORGNE AREA

BLOCK LB0004

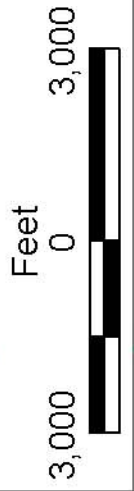
BLOCK LB0005

LAKE BORGNE

BLOCK LB0006

BLOCK LB0021

P.O.B.  
X=2,554,250.00  
Y=520,958.70



**TRACT 37326 - St. Bernard Parish, Louisiana**

All of the lands now or formerly constituting the beds and bottoms of all water bodies of every nature and description the title of which vests in the State of Louisiana, together with all islands arising therein and other lands formed by accretion or by reliction, where allowed by law, excepting tax adjudicated lands, and not presently under mineral lease on May 11, 2005, situated in St. Bernard Parish, Louisiana, and more particularly described as follows: Beginning at a point having Coordinates of X = 2,567,242.00 and Y = 502,958.70; thence East 5,008.00 feet to a point having Coordinates of X = 2,572,250.00 and Y = 502,958.70; thence North 15,010.20 feet to a point having Coordinates of X = 2,572,250.00 and Y = 517,968.90; thence East 6,474.39 feet to a point having Coordinates of X = 2,578,724.39 and Y = 517,968.90; thence South 15,743.90 feet to a point having Coordinates of X = 2,578,724.39 and Y = 502,225.00; thence West 11,482.39 feet to a point having Coordinates of X = 2,567,242.00 and Y = 502,225.00; thence North 733.70 feet to the point of beginning, containing approximately **2,424.39 acres**, all as more particularly outlined on a plat on file in the Office of Mineral Resources, Department of Natural Resources. All bearings, distances and coordinates are based on Louisiana Coordinate System of 1927, (North or South Zone), where applicable.

NOTE: The above description of the Tract nominated for lease has been provided and corrected, where required, exclusively by the nomination party. Any mineral lease selected from this Tract and awarded by the Louisiana State Mineral Board shall be without warranty of any kind, either express, implied, or statutory, including, but not limited to, the implied warranties of merchantability and fitness for a particular purpose. Should the mineral lease awarded by the Louisiana State Mineral Board be subsequently modified, cancelled or abrogated due to the existence of conflicting leases, operating agreements, private claims or other future obligations or conditions which may affect all or any portion of the leased Tract, it shall not relieve the Lessee of the obligation to pay any bonus due thereon to the Louisiana State Mineral Board, nor shall the Louisiana State Mineral Board be obligated to refund any consideration paid by the Lessor prior to such modification, cancellation, or abrogation, including, but not limited to, bonuses, rentals and royalties.

NOTE: The Office of Mineral Resources will require a minimum bonus of \$230 per acre and a minimum royalty of 23%.

NOTE: The State of Louisiana does hereby reserve, and this lease shall be subject to, the imprescriptible right of surface use in the nature of a servitude in favor of the Department of Natural Resources, including its Offices and Commissions, for the sole purpose of implementing, constructing, servicing and maintaining approved coastal zone management and/or restoration projects. Utilization of any and all rights derived under this lease by the mineral lessee, its agents, successors or assigns, shall not interfere with nor hinder the reasonable surface use by the

Department of Natural Resources, its Offices or Commissions, as herein above reserved.

NOTE: The Department of Wildlife and Fisheries has designated certain areas in the coastal waters of the State of Louisiana as Oyster Seed Bed Areas. The exact location of those Seed Bed Areas must be obtained from the Department of Wildlife and Fisheries and any work done under a mineral lease from the State of Louisiana may necessarily be conducted in conformity with the rules and regulations promulgated by the said Department of Wildlife and Fisheries for Oyster Seed Bed Areas.

Applicant: Leslie M. Cooper

Bidder	Cash Payment	Price/ Acre	Rental	Oil	Gas	Other

