

TRACT 37307 - Lincoln Parish, Louisiana

All of the lands now or formerly constituting the beds and bottoms of all water bodies of every nature and description the title of which vests in the State of Louisiana, together with all islands arising therein and other lands formed by accretion or by reliction, where allowed by law, excepting tax adjudicated lands, and not presently under mineral lease on May 11, 2005, situated in Lincoln Parish, Louisiana, and more particularly described as follows: A certain tract of land situated in the Southeast Quarter of the Southwest Quarter (SE 1/4 of SW 1/4) of Section 20, T18N-R2W, and being more particularly described in that certain deed, dated July 15, 1992, from Ruston Chamber of Commerce, as Vendor, to the Louisiana Military Department and the State Of Louisiana, as Vendees, recorded in C.O.B. 808, Page 180, Entry No. E-52936 of the official records of the Clerk of Court of Lincoln Parish, Louisiana; Said tract being bounded, now or formerly, as follows: Northeast by the Southwesterly right-of-way of McDonald Avenue and/or SW Paper, Inc.; East by James Davison et ux.; South by Section line and/or Doyle Barham; Southwest by Kenneth Terral; and West by Bernis Williamson. Said tract being more particularly described as follows: From a 4 inch iron pipe marking the Southeast corner of the Southwest quarter of Section 20, North 89 degrees 51 minutes 25 seconds West 331.58 feet to a one inch iron pipe and the point of beginning; thence South 89 degrees 31 minutes 00 seconds West 635.82 feet to a one and a half inch iron pipe; thence North 60 degrees 16 minutes 00 seconds West 463.29 feet to a one and a half inch iron pipe; thence North 01 degrees 04 minutes 49 seconds West 739.86 feet to a one and a half inch iron pipe on the Southwesterly right-of-way line of McDonald Avenue; thence South 62 degrees 45 minutes 42 seconds East 1,180.00 feet along said right-of-way line to a one half inch iron rod; thence South 00 degrees 23 minutes 23 seconds East 424.07 feet to the point of beginning, containing approximately **15.569 acres**, all as more particularly outlined on a plat on file in the Office of Mineral Resources, Department of Natural Resources. All bearings, distances and coordinates are based on Louisiana Coordinate System of 1927, (North or South Zone), where applicable.

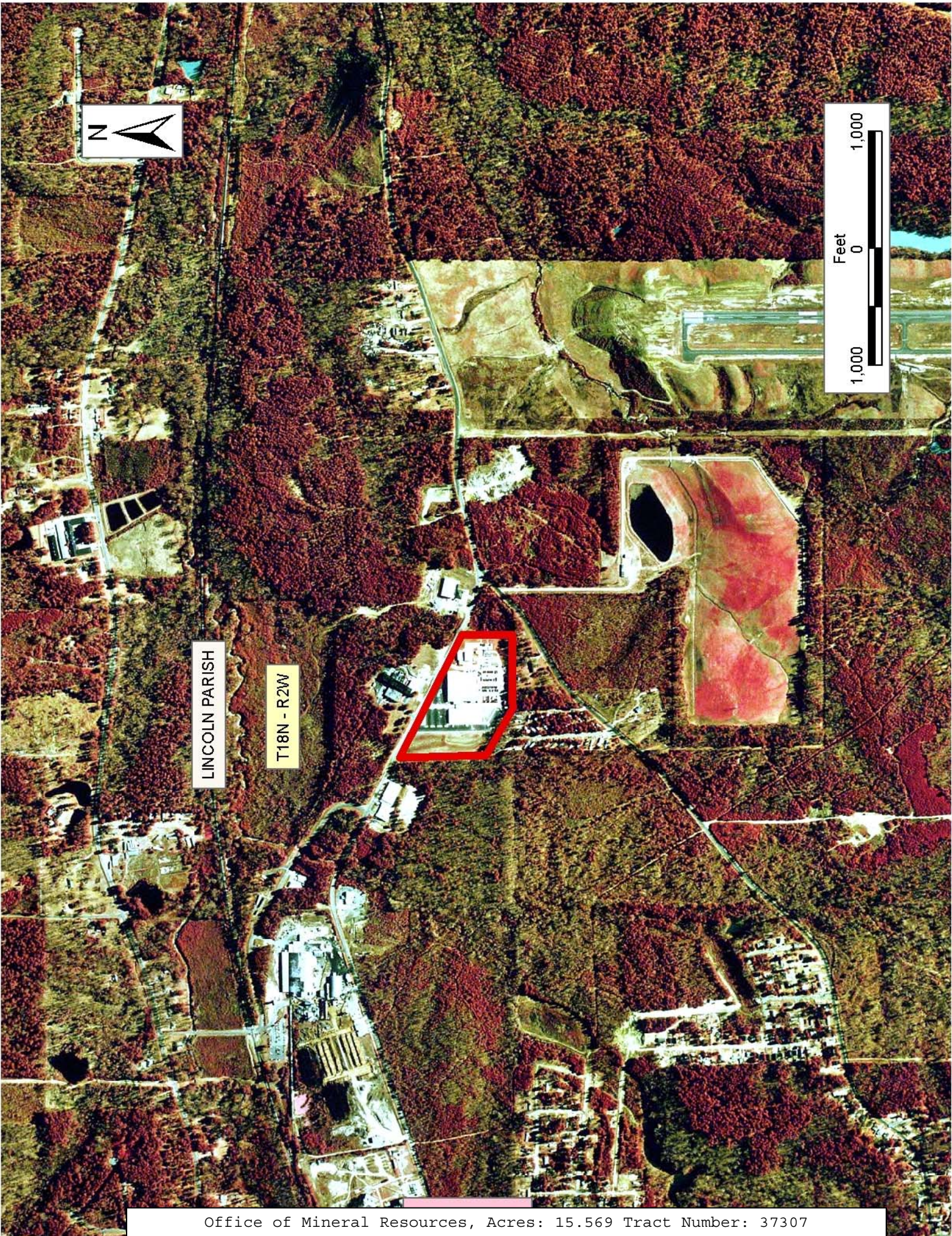
NOTE: The above description of the Tract nominated for lease has been provided and corrected, where required, exclusively by the nomination party. Any mineral lease selected from this Tract and awarded by the Louisiana State Mineral Board shall be without warranty of any kind, either express, implied, or statutory, including, but not limited to, the implied warranties of merchantability and fitness for a particular purpose. Should the mineral lease awarded by the Louisiana State Mineral Board be subsequently modified, cancelled or abrogated due to the existence of conflicting leases, operating agreements, private claims or other future obligations or conditions which may affect all or any portion of the leased Tract, it shall not relieve the Lessee of the obligation to pay any bonus due thereon to the Louisiana State Mineral Board, nor shall the Louisiana State Mineral Board be obligated to refund any consideration

paid by the Lessor prior to such modification, cancellation, or abrogation, including, but not limited to, bonuses, rentals and royalties.

NOTE: No surface operations or installations may be made on this property.

Applicant: Navy Corp.

Bidder	Cash Payment	Price/Acre	Rental	Oil	Gas	Other



LINCOLN PARISH

T18N - R2W

Feet
0 1,000

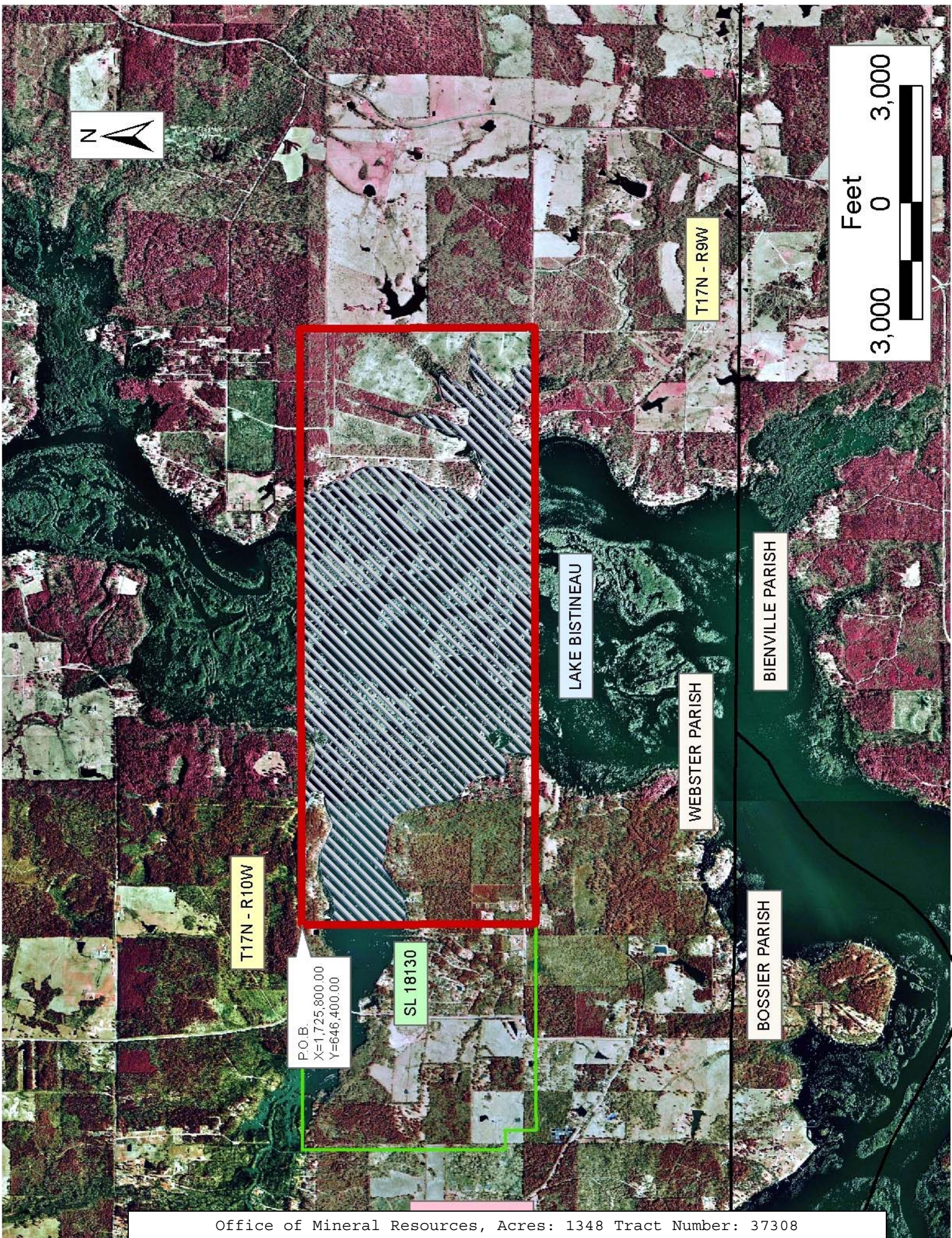
TRACT 37308 - Webster Parish, Louisiana

All of the lands now or formerly constituting the beds and bottoms of all water bodies of every nature and description the title of which vests in the State of Louisiana, together with all islands arising therein and other lands formed by accretion or by reliction, where allowed by law, excepting tax adjudicated lands, and not presently under mineral lease on May 11, 2005, situated in Webster Parish, Louisiana, and more particularly described as follows: Beginning at the Northeast corner of State Lease No. 18130, having Coordinates of X = 1,725,800.00 and Y = 646,400.00; thence East 15,327.00 feet to a point having Coordinates of X = 1,741,127.00 and Y = 646,400.00; thence South 6,046.00 feet to a point having Coordinates of X = 1,741,127.00 and Y = 640,354.00; thence North 89 degrees 49 minutes 41 seconds West 15,327.07 feet to the Southeast corner of State Lease No. 18130, having Coordinates of X = 1,725,800.00 and Y = 640,400.00; thence North 6,000.00 along the East line of said State Lease No. 18130 to the point of beginning **LESS AND EXCEPT** Underground Storage Lease No. 470, and that portion of the nomination from the surface to 5,530 feet located within the geographical boundary of the Underground Storage Lease No. 470, being the Bistineau Gas Storage Pool in the Sligo Formation, also known as the Pettit Formation, containing approximately **1,348 acres**, all as more particularly outlined on a plat on file in the Office of Mineral Resources, Department of Natural Resources. All bearings, distances and coordinates are based on Louisiana Coordinate System of 1927, (North or South Zone), where applicable.

NOTE: The above description of the Tract nominated for lease has been provided and corrected, where required, exclusively by the nomination party. Any mineral lease selected from this Tract and awarded by the Louisiana State Mineral Board shall be without warranty of any kind, either express, implied, or statutory, including, but not limited to, the implied warranties of merchantability and fitness for a particular purpose. Should the mineral lease awarded by the Louisiana State Mineral Board be subsequently modified, cancelled or abrogated due to the existence of conflicting leases, operating agreements, private claims or other future obligations or conditions which may affect all or any portion of the leased Tract, it shall not relieve the Lessee of the obligation to pay any bonus due thereon to the Louisiana State Mineral Board, nor shall the Louisiana State Mineral Board be obligated to refund any consideration paid by the Lessor prior to such modification, cancellation, or abrogation, including, but not limited to, bonuses, rentals and royalties.

Applicant: Acadian Land Services, L.L.C.

Bidder	Cash Payment	Price/Acre	Rental	Oil	Gas	Other



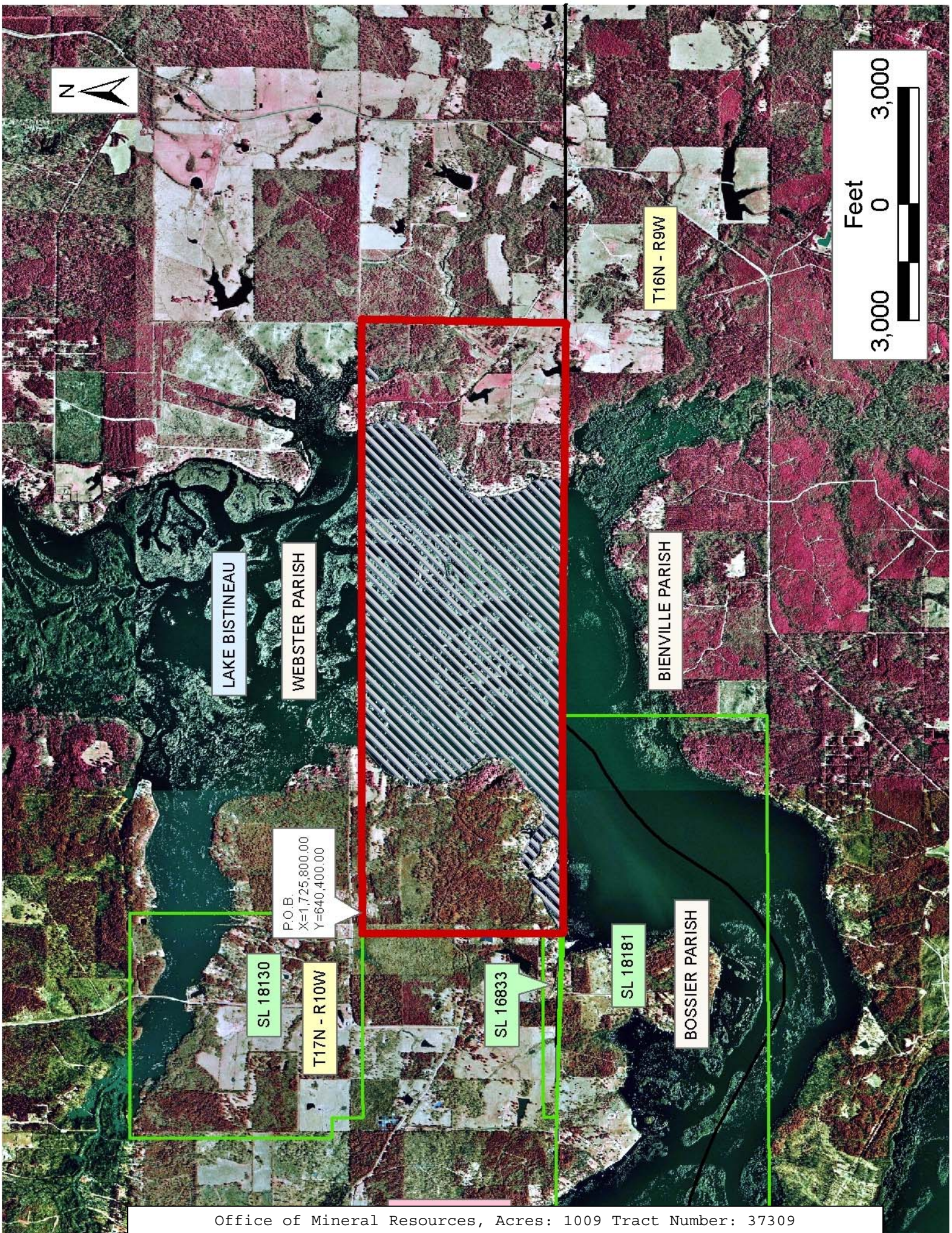
TRACT 37309 - Bossier, Bienville and Webster Parishes, Louisiana

All of the lands now or formerly constituting the beds and bottoms of all water bodies of every nature and description the title of which vests in the State of Louisiana, together with all islands arising therein and other lands formed by accretion or by reliction, where allowed by law, excepting tax adjudicated lands, and not presently under mineral lease on May 11, 2005, situated in Bossier, Bienville and Webster Parishes, Louisiana, and more particularly described as follows: Beginning at the Southeast corner of State Lease No. 18130, having Coordinates of X = 1,725,800.00 and Y = 640,400.00; thence South 89 degrees 49 minutes 41 seconds East 15,327.07 feet to a point having Coordinates of X = 1,741,127.00 and Y = 640,354.00; thence South 01 degree 18 minutes 09 seconds West 5,290.73 feet to a point having Coordinates of X = 1,741,006.72 and Y = 635,064.64; thence North 89 degrees 14 minutes 09 seconds West 10,147.63 feet to the Northeast corner of State Lease No. 18181, having Coordinates of X = 1,730,860.00 and Y = 635,200.00; thence West 5,600 feet along the Northern boundary of State Lease No. 18181 to a point on the Eastern boundary of State Lease No. 16833 having Coordinates of X = 1,725,260.00 and Y = 635,200.00; thence North 540 feet to the Northeast corner of State Lease No. 16833 having Coordinates of X = 1,725,260.00 and Y = 635,740.00; thence North 00 degrees 08 minutes 29 seconds West 4,660.01 feet to a point on the Southern boundary of State Lease No. 18130 having Coordinates of X = 1,725,248.50 and Y = 640,400.00; thence East 551.50 along the South line of State Lease No. 18130 feet to the point of beginning **LESS AND EXCEPT** Underground Storage Lease No. 470, and that portion of the nomination from the surface to 5,530 feet located within the geographical boundary of the Underground Storage Lease No. 470, being the Bistineau Gas Storage Pool in the Sligo Formation, also known as the Pettit Formation, containing approximately **1,009 acres**, all as more particularly outlined on a plat on file in the Office of Mineral Resources, Department of Natural Resources. All bearings, distances and coordinates are based on Louisiana Coordinate System of 1927, (North or South Zone), where applicable.

NOTE: The above description of the Tract nominated for lease has been provided and corrected, where required, exclusively by the nomination party. Any mineral lease selected from this Tract and awarded by the Louisiana State Mineral Board shall be without warranty of any kind, either express, implied, or statutory, including, but not limited to, the implied warranties of merchantability and fitness for a particular purpose. Should the mineral lease awarded by the Louisiana State Mineral Board be subsequently modified, cancelled or abrogated due to the existence of conflicting leases, operating agreements, private claims or other future obligations or conditions which may affect all or any portion of the leased Tract, it shall not relieve the Lessee of the obligation to pay any bonus due thereon to the Louisiana State Mineral Board, nor shall the Louisiana State Mineral Board be obligated to refund any consideration paid by the Lessor prior to such modification, cancellation, or abrogation, including, but not limited to, bonuses, rentals and royalties.

Applicant: Acadian Land Services, L.L.C.

Bidder	Cash Payment	Price/Acre	Rental	Oil	Gas	Other



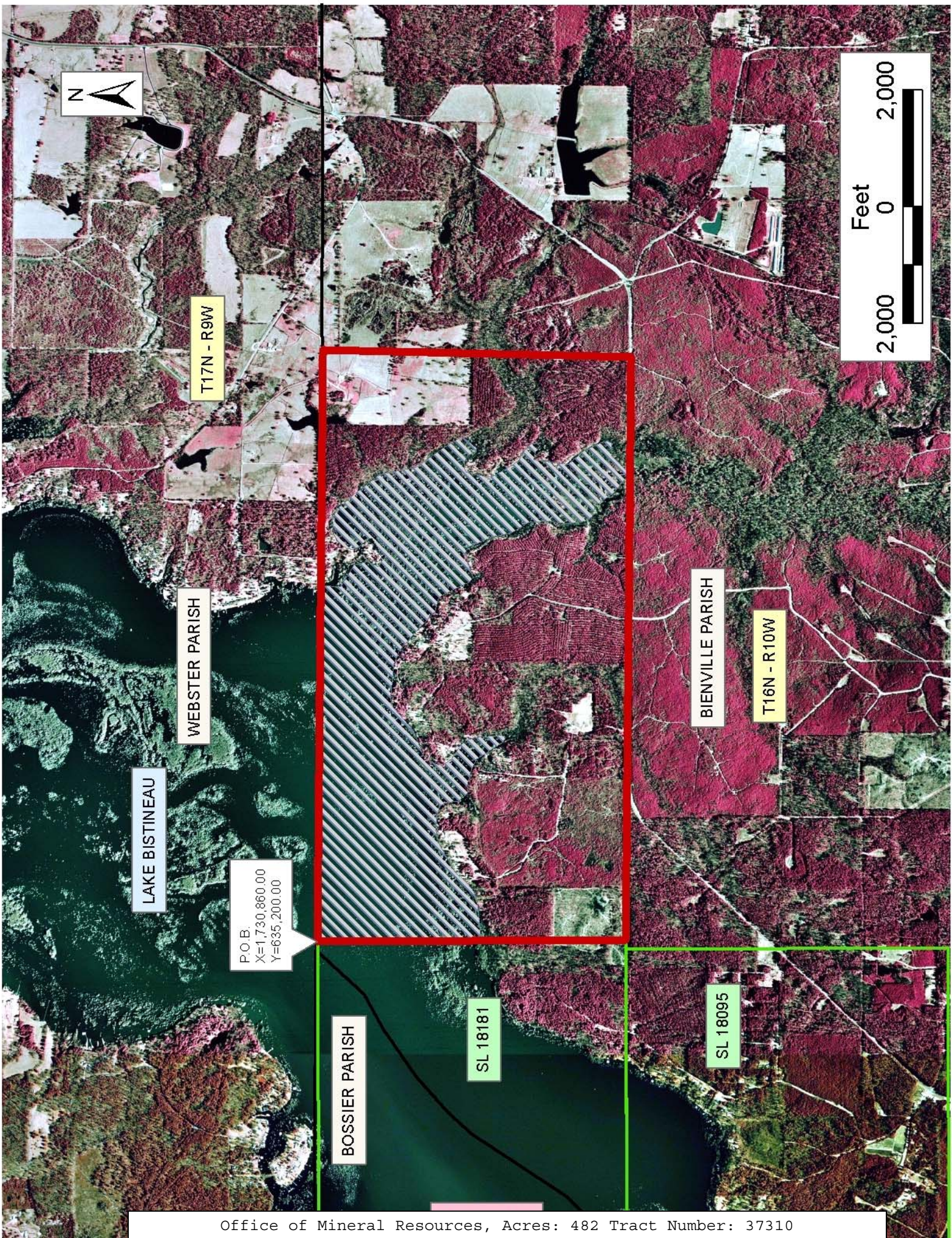
TRACT 37310 - Bienville and Webster Parishes, Louisiana

All of the lands now or formerly constituting the beds and bottoms of all water bodies of every nature and description the title of which vests in the State of Louisiana, together with all islands arising therein and other lands formed by accretion or by reliction, where allowed by law, excepting tax adjudicated lands, and not presently under mineral lease on May 11, 2005, situated in Bienville and Webster Parishes, Louisiana, and more particularly described as follows: Beginning at the Northeast corner of State Lease No. 18181, having Coordinates of X = 1,730,860.00 and Y = 635,200.00; thence South 89 degrees 14 minutes 09 seconds East 10,147.63 feet to a point having Coordinates of X = 1,741,006.72 and Y = 635,064.64; thence South 01 degree 37 minutes 05 second West 5,285.96 feet to a point having Coordinates of X = 1,740,857.46 and Y = 629,780.79; thence North 89 degrees 12 minutes 08 seconds West 9,998.43 feet to the Southeast corner of State Lease No. 18181, having Coordinates of X = 1,730,860.00 and Y = 629,920.00; thence North along Eastern boundary of State Lease No. 18181 5,280.00 feet to the point of beginning **LESS AND EXCEPT** Underground Storage Lease No. 470, and that portion of the nomination from the surface to 5,530 feet located within the geographical boundary of the Underground Storage Lease No. 470, being the Bistineau Gas Storage Pool in the Sligo Formation, also known as the Pettit Formation, containing approximately **482 acres**, all as more particularly outlined on a plat on file in the Office of Mineral Resources, Department of Natural Resources. All bearings, distances and coordinates are based on Louisiana Coordinate System of 1927, (North or South Zone), where applicable.

NOTE: The above description of the Tract nominated for lease has been provided and corrected, where required, exclusively by the nomination party. Any mineral lease selected from this Tract and awarded by the Louisiana State Mineral Board shall be without warranty of any kind, either express, implied, or statutory, including, but not limited to, the implied warranties of merchantability and fitness for a particular purpose. Should the mineral lease awarded by the Louisiana State Mineral Board be subsequently modified, cancelled or abrogated due to the existence of conflicting leases, operating agreements, private claims or other future obligations or conditions which may affect all or any portion of the leased Tract, it shall not relieve the Lessee of the obligation to pay any bonus due thereon to the Louisiana State Mineral Board, nor shall the Louisiana State Mineral Board be obligated to refund any consideration paid by the Lessor prior to such modification, cancellation, or abrogation, including, but not limited to, bonuses, rentals and royalties.

Applicant: Acadian Land Services, L.L.C.

Bidder	Cash Payment	Price/Acre	Rental	Oil	Gas	Other



T17N - R9W

WEBSTER PARISH

LAKE BISTINEAU

P.O.B.
X=1,730,860.00
Y=635,200.00

BOSSIER PARISH

SL 18181

BIENVILLE PARISH

T16N - R10W

SL 18095

Feet
2,000 0 2,000

TRACT 37311 - St. Landry Parish, Louisiana

All of the lands now or formerly constituting the beds and bottoms of all water bodies of every nature and description the title of which vests in the State of Louisiana, together with all islands arising therein and other lands formed by accretion or by reliction, where allowed by law, excepting tax adjudicated lands, and not presently under mineral lease on May 11, 2005, situated in St. Landry Parish, Louisiana, and more particularly described as follows: Beginning at a point having Coordinates of X = 1,768,673.47 and Y = 739,306.31; thence East 6,022.76 feet to a point having Coordinates of X = 1,774,696.23 and Y = 739,306.31; thence South 14,889.94 feet to a point having Coordinates of X = 1,774,696.23 and Y = 724,416.37; thence West 6,024.03 feet to a point having Coordinates of X = 1,768,672.20 and Y = 724,416.37; thence North 00 degrees 00 minutes 18 seconds East 14,889.94 feet to the point of beginning, **LESS AND EXCEPT** all that portion of Thistlethwaite Wildlife Management Area that lies within the above described tract, containing approximately **29 acres**, all as more particularly outlined on a plat on file in the Office of Mineral Resources, Department of Natural Resources. All bearings, distances and coordinates are based on Louisiana Coordinate System of 1927, (North or South Zone), where applicable.

NOTE: The above description of the Tract nominated for lease has been provided and corrected, where required, exclusively by the nomination party. Any mineral lease selected from this Tract and awarded by the Louisiana State Mineral Board shall be without warranty of any kind, either express, implied, or statutory, including, but not limited to, the implied warranties of merchantability and fitness for a particular purpose. Should the mineral lease awarded by the Louisiana State Mineral Board be subsequently modified, cancelled or abrogated due to the existence of conflicting leases, operating agreements, private claims or other future obligations or conditions which may affect all or any portion of the leased Tract, it shall not relieve the Lessee of the obligation to pay any bonus due thereon to the Louisiana State Mineral Board, nor shall the Louisiana State Mineral Board be obligated to refund any consideration paid by the Lessor prior to such modification, cancellation, or abrogation, including, but not limited to, bonuses, rentals and royalties.

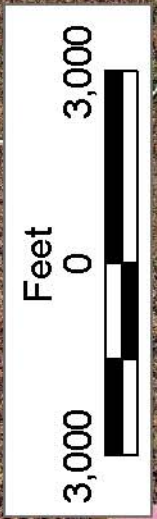
Bidder	Cash Payment	Price/Acre	Rental	Oil	Gas	Other

Applicant: Chris Roy



THISTLETHWAITE
STATE WMA

T4S - R4E



P.O.B.
X=1,768,673.47
Y=739,306.31

ST LANDRY PARISH

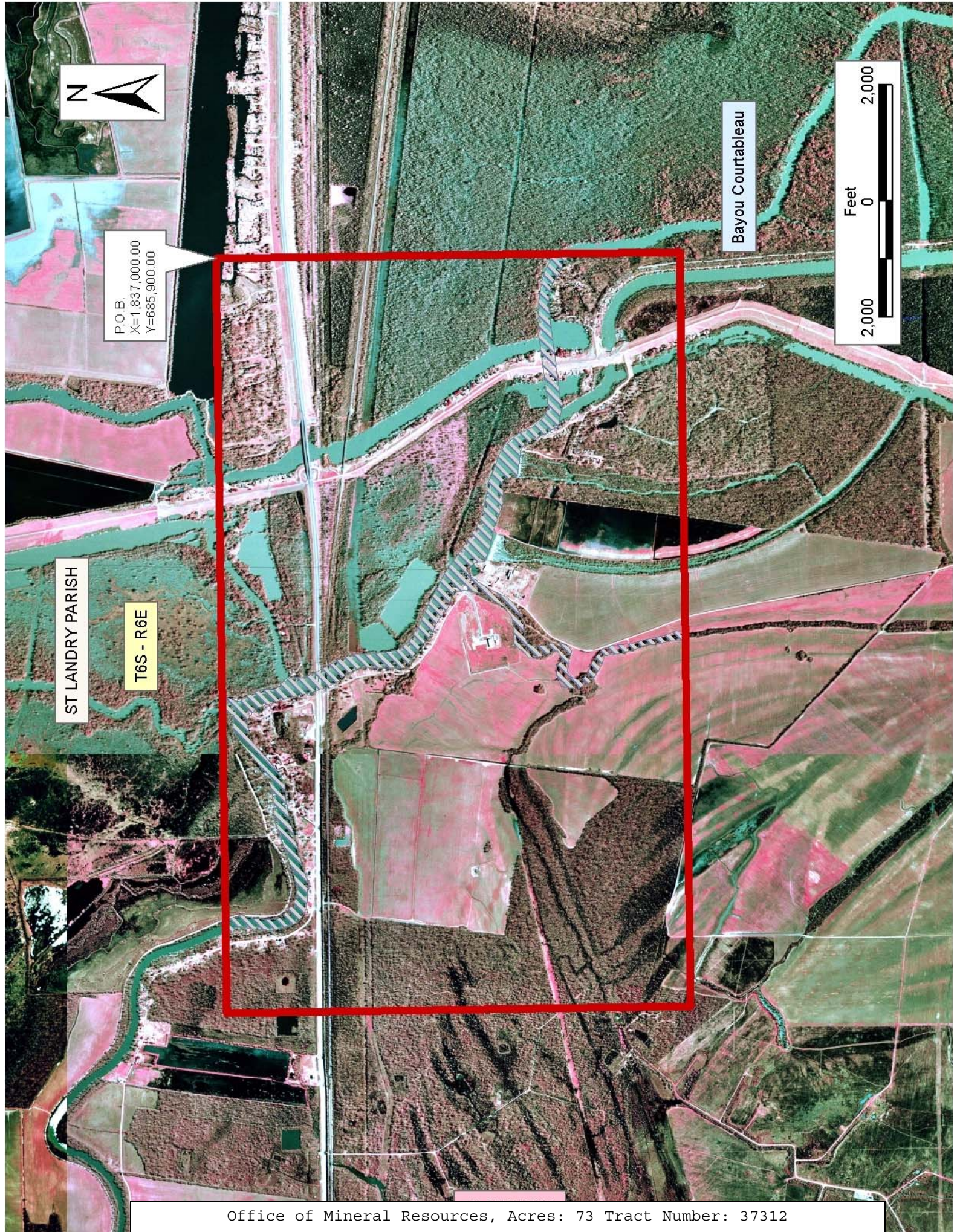
TRACT 37312 - St. Landry Parish, Louisiana

All of the lands now or formerly constituting the beds and bottoms of all water bodies of every nature and description the title of which vests in the State of Louisiana, together with all islands arising therein and other lands formed by accretion or by reliction, where allowed by law, excepting tax adjudicated lands, and not presently under mineral lease on May 11, 2005, situated in St. Landry Parish, Louisiana, and more particularly described as follows: Beginning at a point having Coordinates of X = 1,837,000.00 and Y = 685,900.00; thence South 8,000.00 feet to a point having Coordinates of X = 1,837,000.00 and Y = 677,900.00; thence West 13,000.00 feet to a point having Coordinates of X = 1,824,000.00 and Y = 677,900.00; thence North 8,000.00 feet to a point having Coordinates of X = 1,824,000.00 and Y = 685,900.00; thence East 13,000.00 feet to the point of beginning, containing approximately **73 acres**, all as more particularly outlined on a plat on file in the Office of Mineral Resources, Department of Natural Resources. All bearings, distances and coordinates are based on Louisiana Coordinate System of 1927, (North or South Zone), where applicable.

NOTE: The above description of the Tract nominated for lease has been provided and corrected, where required, exclusively by the nomination party. Any mineral lease selected from this Tract and awarded by the Louisiana State Mineral Board shall be without warranty of any kind, either express, implied, or statutory, including, but not limited to, the implied warranties of merchantability and fitness for a particular purpose. Should the mineral lease awarded by the Louisiana State Mineral Board be subsequently modified, cancelled or abrogated due to the existence of conflicting leases, operating agreements, private claims or other future obligations or conditions which may affect all or any portion of the leased Tract, it shall not relieve the Lessee of the obligation to pay any bonus due thereon to the Louisiana State Mineral Board, nor shall the Louisiana State Mineral Board be obligated to refund any consideration paid by the Lessor prior to such modification, cancellation, or abrogation, including, but not limited to, bonuses, rentals and royalties.

Applicant: Pride Oil & Gas Properties, Inc.

Bidder	Cash Payment	Price/Acre	Rental	Oil	Gas	Other



P.O.B.
X=1,837,000.00
Y=685,900.00

ST LANDRY PARISH

T6S - R6E

Bayou Courtableau

Feet
0 2,000
2,000

TRACT 37313 - Calcasieu Parish, Louisiana

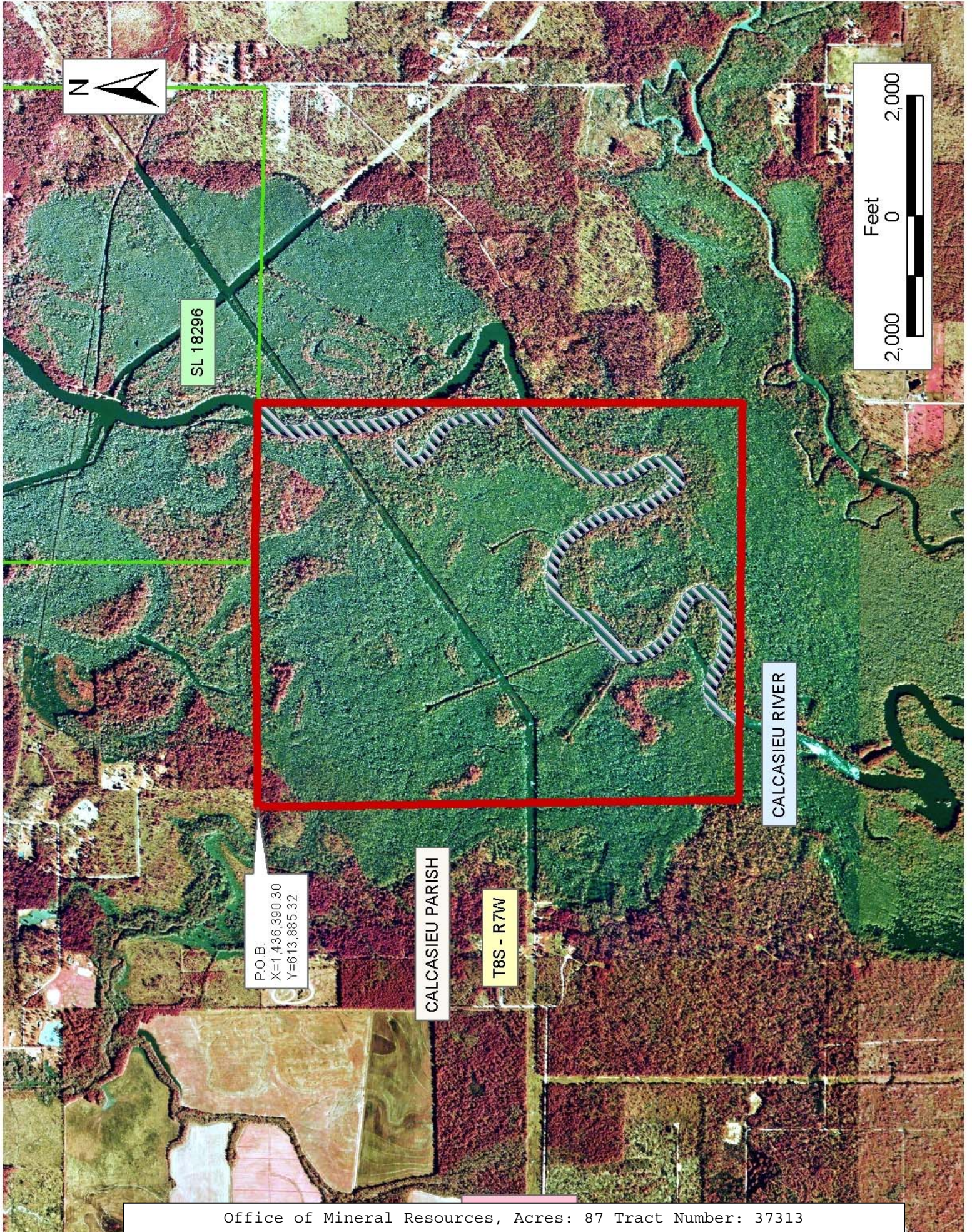
All of the lands now or formerly constituting the beds and bottoms of all water bodies of every nature and description the title of which vests in the State of Louisiana, together with all islands arising therein and other lands formed by accretion or by reliction, where allowed by law, excepting tax adjudicated lands, and not presently under mineral lease on May 11, 2005, situated in Calcasieu Parish, Louisiana, and more particularly described as follows: Beginning at a point having Coordinates of X = 1,436,390.30 and Y = 613,885.32, thence East 4,066.70 feet to the Southwest corner of State Lease No. 18296, having Coordinates of X = 1,440,457.00 and Y = 613,885.32; thence South 87 degrees 52 minutes 58 seconds East 2,669.66 feet along the South boundary of said State Lease No. 18296 to a point having Coordinates of X = 1,443,124.84 and Y = 613,786.70; thence South 00 degrees 58 minutes 17 seconds West 8,060.49 feet to a point having Coordinates of X = 1,442,988.20 and Y = 605,727.36; thence North 88 degrees 33 minutes 20 seconds West 6,600.00 feet to a point having Coordinates of X = 1,436,390.30 and Y = 605,893.72; thence North 7,991.60 feet to the point of beginning, containing approximately **87 acres**, all as more particularly outlined on a plat on file in the Office of Mineral Resources, Department of Natural Resources. All bearings, distances and coordinates are based on Louisiana Coordinate System of 1927, (North or South Zone), where applicable.

NOTE: The above description of the Tract nominated for lease has been provided and corrected, where required, exclusively by the nomination party. Any mineral lease selected from this Tract and awarded by the Louisiana State Mineral Board shall be without warranty of any kind, either express, implied, or statutory, including, but not limited to, the implied warranties of merchantability and fitness for a particular purpose. Should the mineral lease awarded by the Louisiana State Mineral Board be subsequently modified, cancelled or abrogated due to the existence of conflicting leases, operating agreements, private claims or other future obligations or conditions which may affect all or any portion of the leased Tract, it shall not relieve the Lessee of the obligation to pay any bonus due thereon to the Louisiana State Mineral Board, nor shall the Louisiana State Mineral Board be obligated to refund any consideration paid by the Lessor prior to such modification, cancellation, or abrogation, including, but not limited to, bonuses, rentals and royalties.

NOTE: The above Tract is located upon a restricted scenic river and all operations in this area must be conducted in strict conformity with the regulations of the Corps of Engineers, U.S. Army.

Applicant: Theophilus Oil, Gas & Land Services LLC

Bidder	Cash Payment	Price/Acre	Rental	Oil	Gas	Other



TRACT 37314 - Calcasieu Parish, Louisiana

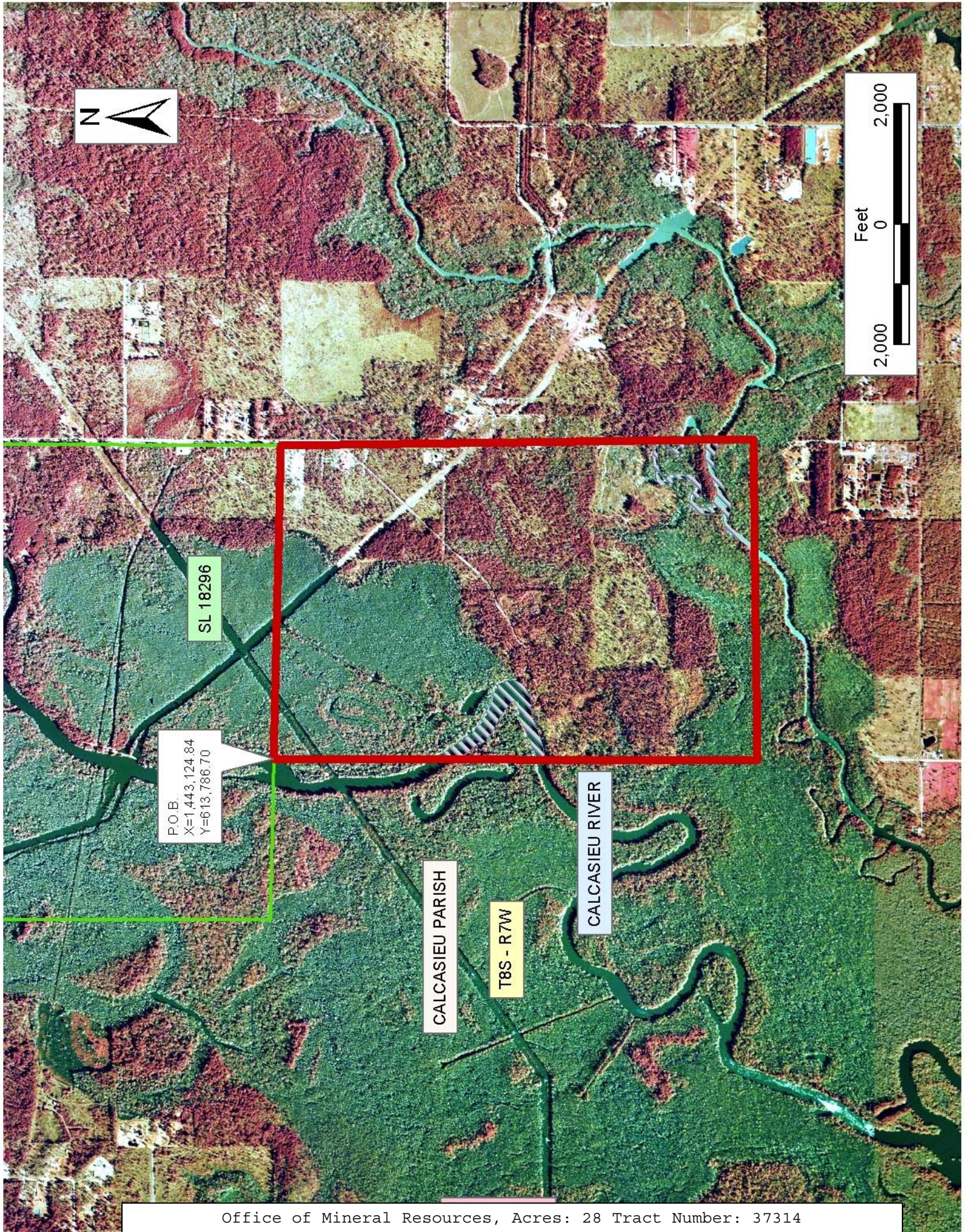
All of the lands now or formerly constituting the beds and bottoms of all water bodies of every nature and description the title of which vests in the State of Louisiana, together with all islands arising therein and other lands formed by accretion or by reliction, where allowed by law, excepting tax adjudicated lands, and not presently under mineral lease on May 11, 2005, situated in Calcasieu Parish, Louisiana, and more particularly described as follows: Beginning at a point located on the South boundary of State Lease No. 18296, having Coordinates of X = 1,443,124.84 and Y = 613,786.70; thence South 87 degrees 52 minutes 58 seconds East 5,218.59 feet along the South boundary of said State Lease No. 18296 to its Southeast corner having Coordinates of X = 1,448,339.87 and Y = 613,593.91; thence South 7,866.55 feet to a point having Coordinates of X = 1,448,339.87 and Y = 605,727.36; thence West 5,351.67 feet to a point having Coordinates of X = 1,442,988.20 and Y = 605,727.36; thence North 00 degrees 58 minutes 17 seconds East 8,060.49 feet to the point of beginning, containing approximately **28 acres**, all as more particularly outlined on a plat on file in the Office of Mineral Resources, Department of Natural Resources. All bearings, distances and coordinates are based on Louisiana Coordinate System of 1927, (North or South Zone), where applicable.

NOTE: The above description of the Tract nominated for lease has been provided and corrected, where required, exclusively by the nomination party. Any mineral lease selected from this Tract and awarded by the Louisiana State Mineral Board shall be without warranty of any kind, either express, implied, or statutory, including, but not limited to, the implied warranties of merchantability and fitness for a particular purpose. Should the mineral lease awarded by the Louisiana State Mineral Board be subsequently modified, cancelled or abrogated due to the existence of conflicting leases, operating agreements, private claims or other future obligations or conditions which may affect all or any portion of the leased Tract, it shall not relieve the Lessee of the obligation to pay any bonus due thereon to the Louisiana State Mineral Board, nor shall the Louisiana State Mineral Board be obligated to refund any consideration paid by the Lessor prior to such modification, cancellation, or abrogation, including, but not limited to, bonuses, rentals and royalties.

NOTE: The above Tract is located upon a restricted scenic river and all operations in this area must be conducted in strict conformity with the regulations of the Corps of Engineers, U.S. Army.

Applicant: Theophilus Oil, Gas & Land Services LLC

Bidder	Cash Payment	Price/Acre	Rental	Oil	Gas	Other



SL 18296

P.O.B.
X=1,443,124.84
Y=613,786.70

CALCASIEU PARISH

T8S - R7W

CALCASIEU RIVER

TRACT 37315 - Calcasieu Parish, Louisiana

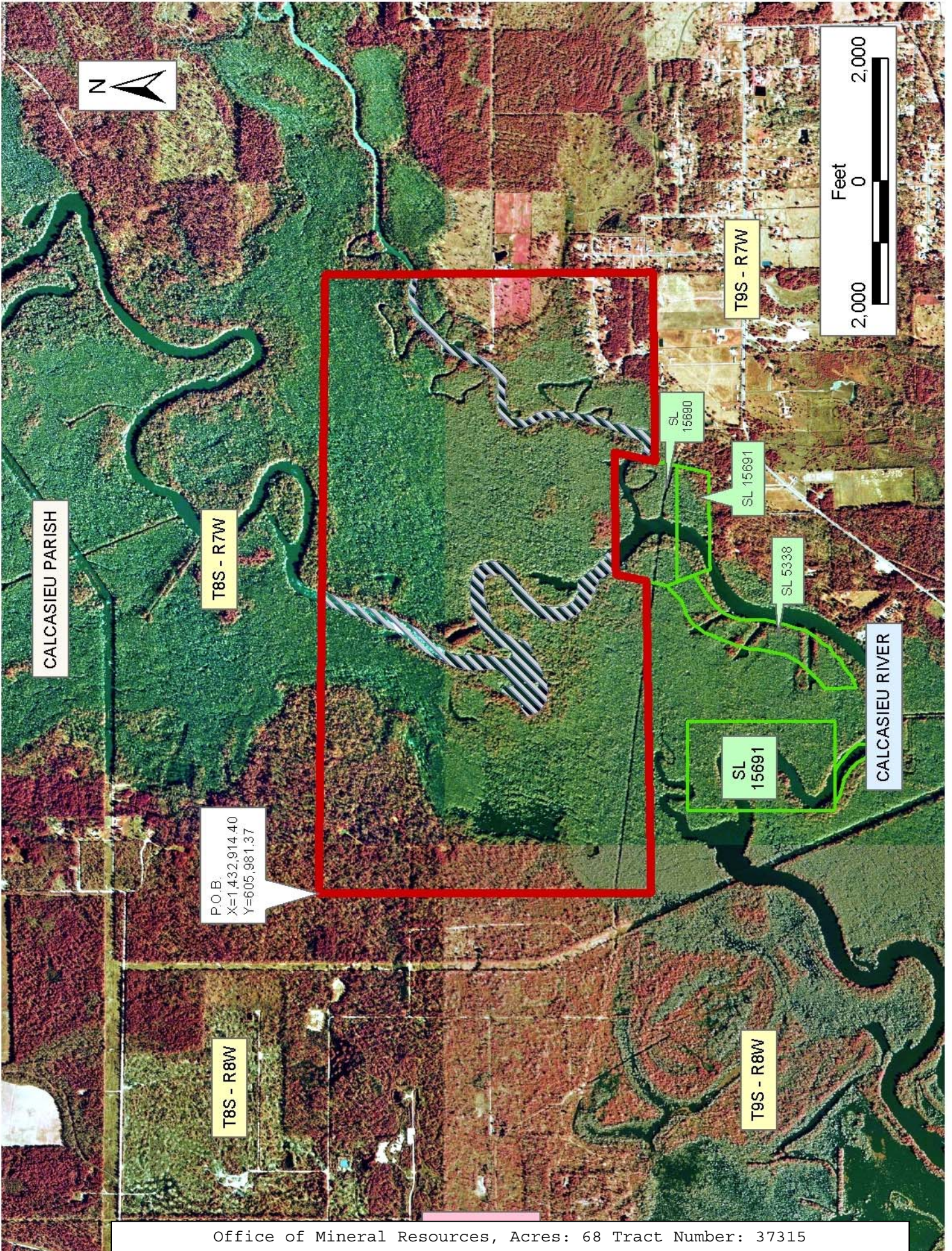
All of the lands now or formerly constituting the beds and bottoms of all water bodies of every nature and description the title of which vests in the State of Louisiana, together with all islands arising therein and other lands formed by accretion or by reliction, where allowed by law, excepting tax adjudicated lands, and not presently under mineral lease on May 11, 2005, situated in Calcasieu Parish, Louisiana, and more particularly described as follows: Beginning at a point having Coordinates of X = 1,432,914.40 and Y = 605,981.37; thence South 88 degrees 33 minutes 20 seconds East 10,077.00 feet to a point having Coordinates of X = 1,442,988.20 and Y = 605,727.36; thence South 00 degrees 26 minutes 06 seconds West 5,330.50 feet to a point having Coordinates of X = 1,442,947.73 and Y = 600,397.01, thence West 3,072.03 feet to a point on the East boundary of State Lease No. 15690, as amended, having Coordinates of X = 1,439,875.70 and Y = 600,397.01; thence along the boundaries of said State Lease No. 15690 the following: North 13 degrees 16 minutes 36 seconds East 681.01 feet, West 1,990.00 feet and South 13 degrees 16 minutes 36 seconds West 505.40 feet to a point having Coordinates of X = 1,437,926.03 and Y = 600,567.93; thence West 5,082.60 feet to a point having Coordinates of X = 1,432,843.43 and Y = 600,567.93; thence North 00 degrees 45 minutes 04 seconds East 5,413.91 feet to the point of beginning, containing approximately **68 acres**, all as more particularly outlined on a plat on file in the Office of Mineral Resources, Department of Natural Resources. All bearings, distances and coordinates are based on Louisiana Coordinate System of 1927, (North or South Zone), where applicable.

NOTE: The above description of the Tract nominated for lease has been provided and corrected, where required, exclusively by the nomination party. Any mineral lease selected from this Tract and awarded by the Louisiana State Mineral Board shall be without warranty of any kind, either express, implied, or statutory, including, but not limited to, the implied warranties of merchantability and fitness for a particular purpose. Should the mineral lease awarded by the Louisiana State Mineral Board be subsequently modified, cancelled or abrogated due to the existence of conflicting leases, operating agreements, private claims or other future obligations or conditions which may affect all or any portion of the leased Tract, it shall not relieve the Lessee of the obligation to pay any bonus due thereon to the Louisiana State Mineral Board, nor shall the Louisiana State Mineral Board be obligated to refund any consideration paid by the Lessor prior to such modification, cancellation, or abrogation, including, but not limited to, bonuses, rentals and royalties.

NOTE: The above Tract is located upon a restricted scenic river and all operations in this area must be conducted in strict conformity with the regulations of the Corps of Engineers, U.S. Army.

Applicant: Theophilus Oil, Gas & Land Services LLC

Bidder	Cash Payment	Price/Acre	Rental	Oil	Gas	Other



P.O.I.
X=1,432,914.40
Y=605,981.37

CALCASIEU PARISH

T8S - R7W

T9S - R7W

T8S - R8W

T9S - R8W

SL 15690

SL 15691

SL 5338

SL 15691

CALCASIEU RIVER



TRACT 37316 - Calcasieu Parish, Louisiana

All of the lands now or formerly constituting the beds and bottoms of all water bodies of every nature and description the title of which vests in the State of Louisiana, together with all islands arising therein and other lands formed by accretion or by reliction, where allowed by law, excepting tax adjudicated lands, and not presently under mineral lease on May 11, 2005, situated in Calcasieu Parish, Louisiana, and more particularly described as follows: Beginning at a point having Coordinates of X = 1,428,522.94 and Y = 598,699.26; thence South 89 degrees 09 minutes 34 seconds East 4,300.00 feet to a point having Coordinates of X = 1,432,822.48 and Y = 598,636.18; thence North 00 degrees 37 minutes 17 seconds East 1,931.86 feet to a point having Coordinates of X = 1,432,843.43 and Y = 600,567.93; thence East 1,336.12 feet to a point having Coordinates of X = 1,434,179.55 and Y = 600,567.93; thence South 607.02 feet to the Northwest corner of State Lease No. 15691, as amended, having Coordinates of X = 1,434,179.55 and Y = 599,960.91; thence South 00 degrees 48 minutes 16 seconds West 2,400.00 feet along the West boundary of said State Lease No. 15691 to its Southwest corner having Coordinates of X = 1,434,145.85 and Y = 597,561.15; thence North 89 degrees 11 minutes 43 seconds West 578.10 feet to a point having Coordinates of X = 1,433,567.81 and Y = 597,569.27; thence South 2,640.70 feet to a point having Coordinates of X = 1,433,567.81 and Y = 594,928.57; thence West 612.68 feet to a point having Coordinates of X = 1,432,955.13 and Y = 594,928.57; thence South 1,622.11 feet to a point having Coordinates of X = 1,432,955.13 and Y = 593,306.46; thence North 89 degrees 07 minutes 33 seconds West 4,432.70 feet to a point having Coordinates of X = 1,428,522.94 and Y = 593,374.09; thence North 5,325.17 feet to the point of beginning, containing approximately **132 acres**, all as more particularly outlined on a plat on file in the Office of Mineral Resources, Department of Natural Resources. All bearings, distances and coordinates are based on Louisiana Coordinate System of 1927, (North or South Zone), where applicable.

NOTE: The above description of the Tract nominated for lease has been provided and corrected, where required, exclusively by the nomination party. Any mineral lease selected from this Tract and awarded by the Louisiana State Mineral Board shall be without warranty of any kind, either express, implied, or statutory, including, but not limited to, the implied warranties of merchantability and fitness for a particular purpose. Should the mineral lease awarded by the Louisiana State Mineral Board be subsequently modified, cancelled or abrogated due to the existence of conflicting leases, operating agreements, private claims or other future obligations or conditions which may affect all or any portion of the leased Tract, it shall not relieve the Lessee of the obligation to pay any bonus due thereon to the Louisiana State Mineral Board, nor shall the Louisiana State Mineral Board be obligated to refund any consideration paid by the Lessor prior to such modification, cancellation, or abrogation, including, but not limited to, bonuses, rentals and royalties.

Applicant: Theophilus Oil, Gas & Land Services LLC

Bidder	Cash Payment	Price/Acre	Rental	Oil	Gas	Other

